

EDU AFRICA

TRANSFORMATIVE LEARNING JOURNEYS



THE EVOLUTION OF CAPE TOWN'S SHORELINE

East Carolina University
2024



PROGRAM OVERVIEW

About South Africa

As its name might suggest, South Africa is a country located on the southernmost tip of the African continent. South Africa is well-known on the global stage for its long struggle with Apartheid, transitioning to a democratic nation in 1994. Its formative histories, however, are much longer and more complex than the narrow lens of Apartheid allows. Contact between the indigenous societies of the Khoi and the San, and the waves of migration that brought various Bantu civilizations south from West Africa are a couple of examples. Like many other African countries, South Africa is home to varied people groups, cultures, and religious belief systems; for this reason, it is often called the “Rainbow Nation”. It is also geographically rich and varied, comprising 8 different biomes that are spread across the country, and is home to a spectacular array of plant, mammal, and bird species.

This program aims to expose students to the many evolutions and legacies embedded across the shorelines of South Africa. Based in the coastal city of Cape Town, participants will study the ebbs and flows of history, cultures, and economies as they shape and transform the region via the coastline. In particular, participants will learn about the influence of colonialism and Apartheid on people and places through the lens of maritime and coastal studies. This program is relevant to students from a host of disciplines, as it encourages interdisciplinary learning. In line with EDU Africa’s transformative learning approach, intercultural learning, global citizenship, personal growth and professional development aspects will be emphasized alongside academic content, resulting in a holistic and enriching program for all participants.

TRANSFORMATIVE LEARNING JOURNEYS

EDU Africa aims to promote the process of student transformation by utilizing the unique context of Africa to help students broaden their intellectual horizons and grow personally, cross-culturally, professionally, and as global citizens.



INTERCULTURAL
COMPETENCE
(IC)



GLOBAL
CITIZENSHIP
(GC)



PERSONAL
GROWTH
(PG)



PROFESSIONAL
DEVELOPMENT
(PD)



INTELLECTUAL
GROWTH
(IG)

LEARNING OUTCOMES

By the end of this program, students should be able to:

1. Analyze connections between pre-colonial and post-colonial histories in South Africa **(IG)**
2. Understand the significance of Cape Town’s shoreline across different time periods **(GC, IG)**
3. Demonstrate increased personal self-awareness **(PG)**
4. Develop attitudes of cultural curiosity towards South African cultures **(IC)**
5. Learn collaboration, negotiation and teamwork skills **(PD)**

Note: Specific learning outcomes and activities can be constructed in collaboration with EDU Africa’s dedicated curriculum development team.

DAILY PROGRAM

Prior to departure		- EDU Africa facilitates virtual preparation sessions for participants, providing them with important health, safety, and cultural information before travel. - Students are to complete Transformation Questionnaire 1			
Day	Travel	Accommodation	Meals Included	Activities	Learning Outcomes Achieved
1	Arrive CPT	Atlantic Point Backpackers	D	Arrive in Cape Town EDU Orientation Welcome Dinner	-
2		Atlantic Point Backpackers	BL	Free Morning !Khwa ttu San Center	- 1, 3, 4
3		Atlantic Point Backpackers	B	District Six Museum Slave Lodge Castle of Good Hope Short Reflection Session	1, 2 2 4 1, 2, 4
4		Atlantic Point Backpackers	BD	University of Cape Town Visit (Faculty of Humanities) Peer Engagement and Braai (Barbeque) The Shipwreck Game	2 3 5
5		Atlantic Point Backpackers	B	The Lion Trail Free Afternoon Reflection Session	2, 4 - 1, 2, 4
6		Olifantsbos (Cape Point)	BLD	Simon's Town Museum Muizenberg to Kalk Bay Coastal Stroll Lunch at Kalky's with Fisherman Storyteller	1, 2 2 3, 4
7		Olifantsbos (Cape Point)	BLD	SS Thomas T. Tucker Shipwreck Optional hiking in Cape Point Nature Reserve	1, 2 -
8		Atlantic Point Backpackers	B	Chapman's Peak Drive Boulders Penguin Colony	-
9		Atlantic Point Backpackers	BD	18 Gangster Museum Robben Island Free Time at V&A Waterfront Discussion with Lionel Davis	1, 3, 4 1, 4 - 3
10		Atlantic Point Backpackers	BD	Kirstenbosch: Hike to Table Mountain with Guide Table Mountain Cable Car Down Cape Malay Cooking Class	- - 4

11		Atlantic Point Backpackers	B	Seapoint Promenade Reflection Session The Black Mermaid Foundation Guest Discussion - Zandile Ndhlovu	- 1, 4
12		Protea Hotel Franschoek	B	Solms Delta Heritage Experience	2, 4
13		Protea Hotel Franschoek	BL	Klein Goederust Reflection Session	1, 4 (all)
14		Aquila	BLD	Overnight Stay at Aquila Game Reserve	-
	Depart CPT		B	Depart Cape Town Airport Transfers	-

Abbreviations: CPT: Cape Town, B: Breakfast, L: Lunch, D: Dinner

SUSTAINABLE DEVELOPMENT GOALS

This program engages students with the principles of the following United Nations Sustainable Development Goals:



LOCAL PROGRAM FACILITATOR AND/OR GUIDE

All EDU Africa programs are implemented by trusted program facilitators and/or guides. Our program facilitators and guides undergo an intensive 12-module training series. The training modules include details on EDU Africa's transformation goals, reflective practices, emergency procedures, child protection policies, and communication skills, among other elements. We source and carefully select our facilitators and guides from the region to ensure that they can effectively meet specific program themes and needs. Their embodiment of EDU Africa's values of friendliness, collaboration, innovation, stewardship, and learning helps them to holistically support both leaders and participants throughout their program. This guarantees that the planned itinerary and activities come to life. The assigned program facilitator/s and/or guides will be available at all times to assist with any student and educator needs, thus ensuring the smooth running of the program.

PROGRAM CONTRIBUTORS

Lionel Davis, Former Freedom Fighter and Political Prisoner on Robben Island



Growing up as a person of color during South Africa's Apartheid era, it was not long before Lionel Davis developed an antagonism towards the oppression of white authority and found himself politically involved in the anti-Apartheid struggle. In 1964, Lionel was

arrested and sentenced to seven years on Robben Island for conspiring to commit acts of sabotage. He was held in a solitary cell with the likes of Nelson Mandela. After his release, he was restricted under a banning order and placed under house arrest until 1976. After suffering a mental breakdown from his trauma under house arrest, he found solace and healing through art, which led him to complete a degree in Fine Arts at the University of Cape Town in 1994. For many years, Lionel lived on Robben Island, working as an Educational Officer at the Robben Island Museum for 10 years. Today, he continues to create art, write his memoirs, participate in community projects, and share his inspiring stories with us.

Siyabulela Daweti, 18 Gangster Museum



Siyabulela Daweti is a key consultant and guide for the 18 Gangster Museum - an innovative space that aims to help South African youth to better understand the treacherous path that too many in their communities take into gangsterism and ultimately, prison. Incorporating immersive text and imagery and a replica prison cell, the Museum's installations are curated by ex-offenders who share their real-life experiences of gangsterism and prison and how they turned their lives around. As well as his contribution to the 18 Gangster Museum, Siya also runs a recycling business in Khayelitsha and is a firm believer in the power of social entrepreneurship to uplift his community.

Paul Siguqa, Klein Goederust Boutique Winery



The son of a farm worker, Paul Siguqa is a trailblazing entrepreneur and the proud owner of Klein Goederust - the first and only 100% black-owned wine farm in Franschhoek. Born and raised in a rural community, Paul had a passion for farming from a young age. He studied agriculture at Stellenbosch University and worked his way up in the industry, eventually acquiring Klein Goederust in 2019. Under Paul's leadership, Klein Goederust has achieved unprecedented success in the wine industry. He has implemented innovative farming techniques and invested in state-of-the-art equipment, which has allowed him to produce high-quality wines that have received critical acclaim both locally and internationally. Paul's success has been particularly remarkable given the challenges that black farmers have historically faced in the wine industry. His greatest motivator has been his mother, Nomaroma Siguqa, who worked as a laborer and said that she would be the last of the family to do so. Holding the belief that social mobility is possible in South Africa, but that can only happen with education, he has broken down barriers and paved the way for other aspiring black farmers to follow in his footsteps. He is a role model and mentor to many, and has received numerous awards and recognition for his contributions to the agricultural industry and his community. Despite his success, Paul remains committed to promoting sustainability and social responsibility in the wine industry. He works closely with his community and is dedicated to empowering and uplifting those around him. His impact on the industry and his community is truly inspiring and his legacy will be felt for generations to come.

POTENTIAL PROGRAM CONTRIBUTORS

Please note that the contributors listed below are subject to availability and organizational need at the time the program is due to start.

Zandile Ndhlovu, *The Black Mermaid Foundation*



Zandile Ndhlovu is the first Black African freediving instructor in South Africa. She is an advocate of the ocean world and she explores how one's deepest beliefs about the deep ocean can bring greater knowledge of self. Through *The Black Mermaid Foundation* Zandile intends to give access to freediving lessons to underprivileged people and to break barriers and stereotypes among the black community about the ocean.

ACCOMMODATION

Atlantic Point Backpackers

Atlantic Point Backpackers is a lively and popular backpacker's lodge located in Cape Town, South Africa. Situated in the heart of the vibrant Green Point neighborhood, it is just a stone's throw away from the iconic V&A Waterfront and within walking distance to many other attractions and amenities. The hotel's convenient location makes it an excellent base for exploring the city and its surroundings.

Olifantsbos

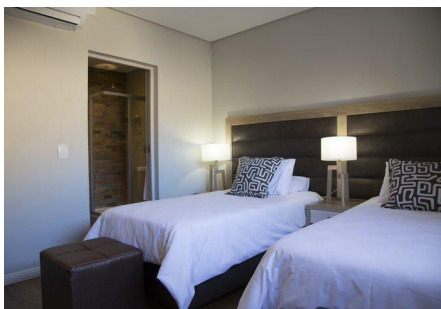
Olifantsbos Guest House is an ideal self-catering accommodation option for student groups in Cape Town. This charming cottage features three bedrooms, comfortably accommodating a total of twelve occupants. The main cottage comprises three double rooms, including a master bedroom with a double bed, and two additional rooms, each furnished with two single beds. In the annex, there are four single beds and a convenient bunk bed arrangement. Bedding and towels are thoughtfully provided, ensuring a comfortable stay. The cottage boasts a well-equipped kitchen powered by gas, allowing participants to prepare their own meals. Additionally, a bathroom with a gas-fueled geyser ensures a consistent supply of hot water. The open plan lounge and dining area provide ample space for relaxation, complete with a cozy fireplace for cooler evenings. To make the most of warm summer nights, the cottage offers a generous patio and braai (barbecue) area. Participants can enjoy outdoor gatherings and take advantage of the nearby beach, accessible via a charming boardwalk. In line with environmentally-friendly practices, the cottage relies on solar power for its lighting and water is sourced from tanks. To support sustainability efforts, guests are kindly requested to conserve energy and water during their stay. Olifantsbos Student Cottage presents a wonderful opportunity for student groups to experience a comfortable and eco-conscious retreat in the captivating city of Cape Town.

Protea Hotel Franschhoek

Protea Hotel Franschhoek is located in the picturesque village of Franschhoek, approximately 80 km east of Cape Town. This hotel offers a charming ambiance, attentive service, and boasts a rich history, with a section dating back to the 1880s. The town derives its name from the French Huguenots who sought refuge here in the 1680s. The hotel's convenient location serves as a convenient base for exploring Franschhoek's culinary establishments, art galleries, cheese factories, and renowned wine estates. The property features a restaurant, conference facilities, comfortable accommodations, and a refreshing swimming pool. The main hotel offers 40 deluxe en-suite bedrooms, and there are 10 fully equipped self-catering apartments located across the road.

Aquila Safari Private Game Reserve

Aquila is a 10,000 hectare conservancy in the Karoo, about two hours from Cape Town. It is home to Africa's Big 5 (elephant, lion, buffalo, rhino and leopard) and several other wildlife. The reserve's purpose is to protect and preserve Africa's increasingly threatened wildlife while remaining fully committed to social upliftment, job creation, skills development and sustainable empowerment programs. Two game drives and meals are included in an overnight stay. Accommodation is available in various lodge and cottage options, each with en-suite bathrooms, and can be configured in twin or double rooms. Amenities include conference facilities, an on-site restaurant, a spa, and an infinity pool.



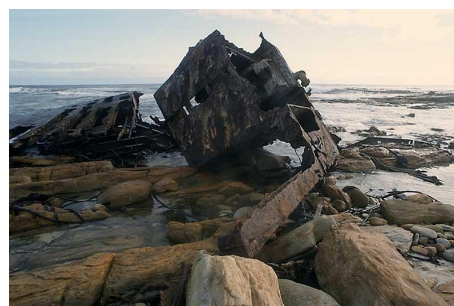
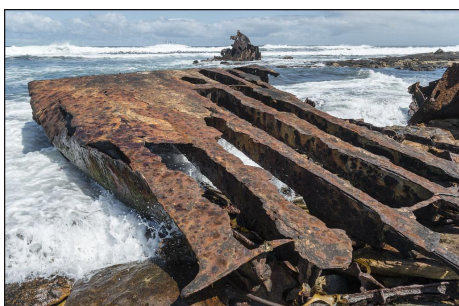
CURRICULAR ACTIVITIES

EDU Africa Orientation

EDU Africa offers a comprehensive orientation session at the start of the program to kickstart participants' acclimation period and prepare them for transformation. It is led by the local Program Facilitator who will support the group for the duration of their stay. The orientation provides a brief introduction to the immediate surroundings, contextualizes the country setting, and provides information pertinent to the group's safety and overall experience throughout the program. It builds on content introduced in virtual preparatory sessions and, in the event that virtual preparation did not occur, ensures that the learning experience(s) to follow is foregrounded within the transformative learning framework. The Program Facilitator will typically provide participants with an outline of the program at this stage and clarify the roles, responsibilities, and expectations with the participants while in-country.

SS Thomas T. Tucker Shipwreck

The SS Thomas T. Tucker Shipwreck in Cape Town is a haunting reminder of a maritime disaster that occurred off the coast of South Africa. The ship, named after its captain, Thomas Tucker, met its tragic fate in the waters near Cape Town in the early 20th century. The SS Thomas T. Tucker was a cargo vessel that had been sailing for several years, transporting goods and supplies between different ports around the world. On a stormy night in 1923, while navigating the treacherous waters of the Cape of Good Hope, the ship encountered severe weather conditions that proved too overwhelming to overcome.



CO-/EXTRACURRICULAR ACTIVITIES

!Khwatla San Heritage Center

!Khwatla aims to open participant's eyes to the world of the San, one of Africa's oldest people. The San guided tour is a fascinating insight into the culture, heritage, knowledge, skills and contemporary life of the San people. The

emphasis is on a “journey into history facilitated by the San people themselves,” celebrating San culture and creating opportunities for the San community. San guides at !Khwatlu provide a glimpse into the rich diversity of San traditional stories and skills. There’s a spirit of forgiveness, healing and celebration– and a participation in the renewal of an ancient, wisdom-filled culture. This unique spirit is shared from the first encounter at !Khwatlu, from the receptionist, to the smiling waiters, gardeners and guides.



PROGRAM EVALUATION

Transformation Questionnaires

EDU Africa’s Transformation Questionnaires are pre-and post-test student self-evaluations designed to help gauge their transformation in line with EDU Africa’s transformative learning goals. Students complete Transformation Questionnaire 1 at the start of the program, providing a benchmark score against which we compare their results for Transformation Questionnaire 2 (completed at the program’s end). A report is drawn from the student data collected and shared with faculty in the weeks after the program has ended.

Reflection Sessions

Reflection sessions encourage students to think through, process, and make meaning of their experiences in the program. Through a combination of formal and informal reflection techniques, students will be asked questions and invited to engage in structured activities that encourage them to articulate their thoughts and feelings, internalize any lessons or moments of growth, and ultimately, transform, in line with the program learning outcomes.

REASONABLE ACCOMMODATIONS FOR FUNCTIONAL DIFFERENCES

We are committed to providing an inclusive and accessible environment for all our program participants by supporting functional differences, disabilities, and any other special needs. If participants have any specific needs that we might be able to accommodate during the program or have requirements for extra time or resources, please let us know in advance so that we can do our best to assist them. As part of our pre-departure processes, our Program Designers will ensure that participants complete our Participant Information Form which asks for details of any allergies, medical conditions, and other special needs.

STUDENT ELIGIBILITY REQUIREMENTS

Our Program Designers do the best they can to ensure that our programs are accessible to as many participants as possible. However, there may be areas in which an individual may not have access or cannot be accommodated with regard to a functional difference. This section lists some elements for participants to consider before they travel. Participants in this program should be aware of and be prepared for the following:

- Signing and adhering to the policies outlined in EDU Africa’s Participant Agreement Form, which include protocols for Notifiable Medical Conditions such as COVID-19.
- Obtaining travel insurance (highly recommended) before travel. This should include adequate cover for baggage, curtailment, and provision for any forms of disruptions to travel due to Notifiable Medical Conditions such as COVID-19. *Please note that participants who choose not to take out relevant travel insurance must be prepared to directly cover any such expenses as stated above should they arise while they travel.*
- Obtaining medical insurance (compulsory) before travel. This should cover any potential medical expenses and the cost of repatriation should participants become too ill to participate, including helicopter rescue and air ambulance services, as well as cover any forms of medical expenses that may be incurred due to illnesses from Notifiable Medical Conditions such as COVID-19. *Please note that participants who choose not to take out relevant medical insurance must be prepared to directly cover any such expenses as stated above should they arise while they travel.*
- Carrying their own luggage as much as possible to minimize cross-contamination with germs (help will be available when necessary in adherence to any Notifiable Medical Conditions protocols)
- Dealing with ambiguity, for example, there may need to be last-minute unforeseen changes to the program itinerary
- Visiting potentially triggering or traumatic areas/sites (*Robben Island, 18 Gangster Museum*)
- Walking long distances (*Kirstenbosch to Table Mountain Hike, Muizenberg Coastal Stroll*)
- Coping with lack of electricity during scheduled and/or unplanned power outages, and any effects that this may have on the itinerary
- Being in open game vehicles in a reserve where there are wild animals
- Managing dietary needs with limited available options in certain communities (*Cape Malay Cooking*)
- Learning to adjust to communicating and interacting with others who may have different accents, values, beliefs, cultures, and traditions for the duration of the program
- Interacting with materially poor environments (as evident, for example, through the appearance of general and housing infrastructure, modes of transport, clothing, etc.) and demonstrating respect and acknowledging dignity in all circumstances
- Being aware that they may be approached by people selling their wares or asking for food or money. While your local facilitator/guide will assist in managing these situations, participants should recognize that it is not impolite to say “no, thank you” and walk away.

ITINERARY FLEXIBILITY AND COST

The itinerary is correct at the time of submission. It is flexible and may be adjusted to meet students’ needs. In all cases, we will do our best to preserve the quality of what is presented herein. However, we reserve the right to modify the itinerary, locations, accommodation facilities, and costs if any changes dictate. All quoted accommodation is subject to availability and confirmed numbers.

Cost for the program based on per person sharing:

Number of paying persons	Free of charge faculty (land arrangements only)	Price per person (USD)	Single Supplement
10 - 14	0	\$2 570	\$475
15 – 19	0	\$2 260	

What this includes:

- Virtual pre-travel preparation support
- All transport, fuel, tolls, and road taxes
- Full use of a vehicle for the duration of your program
- 24-hour services of an EDU Africa Program Facilitator and/or Guide
- All accommodation as listed above
- All meals as specified in the daily program
- All activities as listed above
- A US\$5 donation (on behalf of each participant) towards the reforestation of Brackenhurst Forest and other important ecosystems in Kenya.

[The Center for Ecosystem Restoration - Kenya](#) is a not-for-profit organization working to recover biodiversity in Kenya through the reforestation of the Brackenhurst forest and the restoration of other key Kenyan ecosystems. Through their donations, participants play an integral part in reversing the degradation of the African continent and ensuring that communities will be able to enjoy the benefits of these natural indigenous ecosystems for generations to come.

What this excludes:

- Wi-Fi (only available as provided by accommodations)
- All meals and drinks not specified above
- Laundry
- All flights
- All optional extra activities
- Travel and medical insurance
- Items of a personal nature, visas, and gratuities

The logo features a large, bold, teal-colored hashtag symbol (#) on the left, followed by the text "AFRICAMYCLASSROOM" in a bold, red, sans-serif font. The entire logo is set against a light gray rectangular background.

info@edu-africa.com | www.edu-africa.com