

## Client Profile

The Gateway Center is a resource center for exploring the design history of the coastal south. Located in Greenville NC, the Center is a partnership between the North Carolina Department of Natural and Cultural Resources and East Carolina University's Department of History, with major funding from the Golden LEAF Foundation.

This state-of-the-art facility allows visitors and scholars to research the rich history of the region, as evidenced by the implements and furnishings used by residents. Research published and programs conducted by the Center paint a detailed portrait of everyday life in the area

The Center includes:

- Visitor reception area
- Exhibition space
- Meeting rooms with full audio/video capabilities
- Facilities for researchers
- Documentation workroom



## Mackenzie Alala

IDSN 2102

Interior Design Fundamentals

Professor Charles Gustina

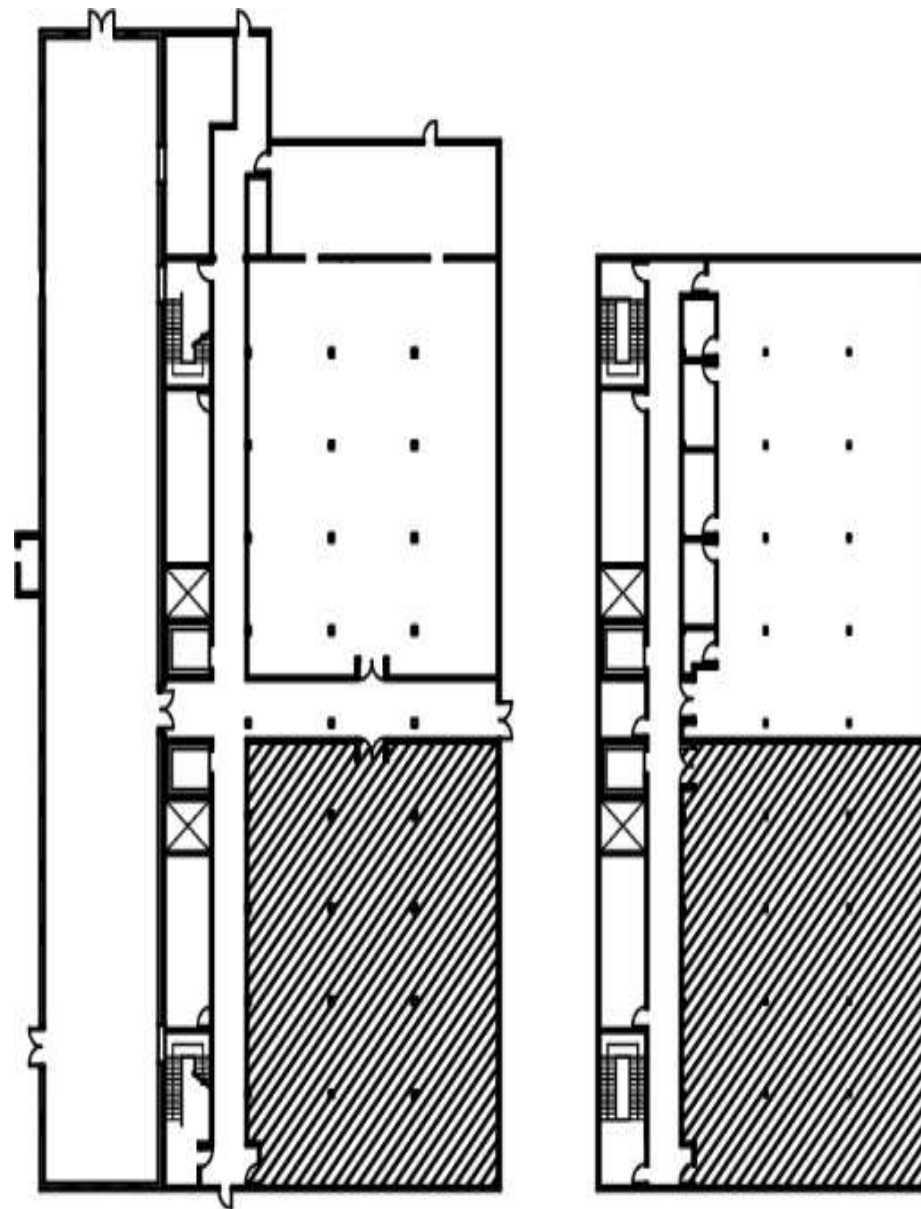
Department of  
Interior Design & Merchandising  
College of Human Ecology  
East Carolina University

## Site Profile

- Pritchard-Hughes Tobacco Building  
Pitt and 11<sup>th</sup> Streets  
Greenville NC
- Erected: first quarter of the Twentieth Century
- Heavy timber construction
- Client to occupy tenant space on first and second floors



Building Exterior



First Floor Tenant Area  
4,280 Square Feet

Second Floor Tenant Area  
4,280 Square Feet

## Mackenzie Alala

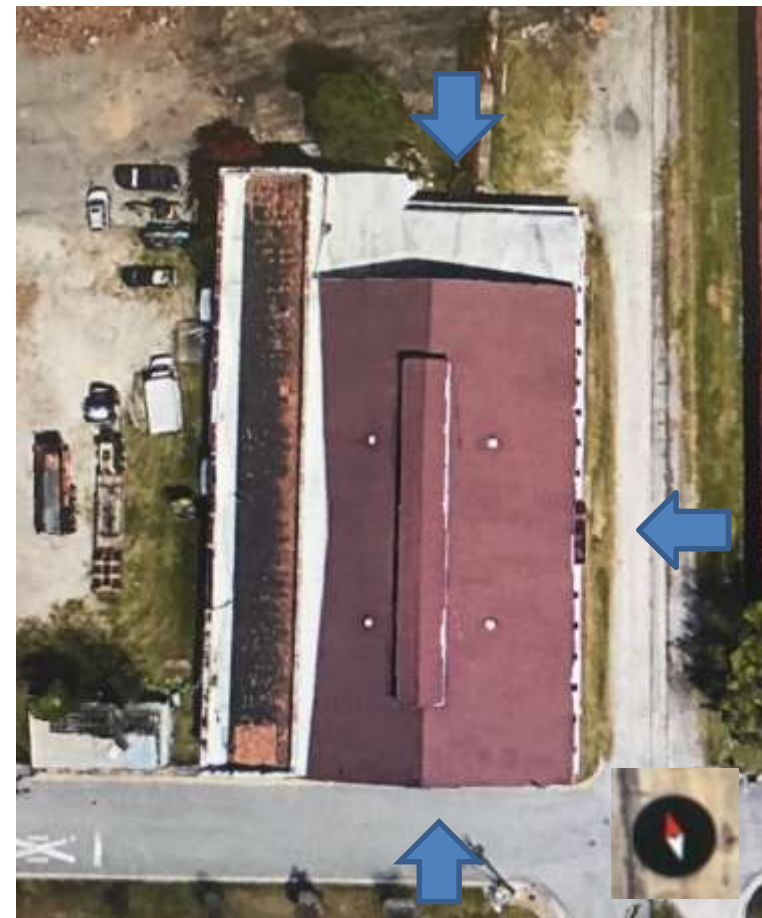
IDSN 2102  
Interior Design Fundamentals  
Professor Charles Gustina

Department of  
Interior Design & Merchandising  
College of Human Ecology  
East Carolina University

## Site Analysis



When the sunlight hits each side of the warehouse, the interior lighting is affected. When the sun rises in the east, the warehouse will get a lot of lighting within due to the numerous windows on the bottom floor. When the sun sets in the west, the bottom floor will again be lit until the sun is fully set. The north side will also be prominent as well as the south.



The blue arrows point to the entrances and exits.

## Mackenzie Alala

IDSN 2102  
Interior Design Fundamentals  
Professor Charles Gustina

Department of  
Interior Design & Merchandising  
College of Human Ecology  
East Carolina University

## Site Analysis



The arrow symbolizes the entrances and exits seen within the photos.

## Mackenzie Alala

IDSN 2102  
Interior Design Fundamentals  
Professor Charles Gustina

Department of  
Interior Design & Merchandising  
College of Human Ecology  
East Carolina University

## Research

### Winterthur Museum

- Opened by collector and horticulturist, Henry Francis du Pont
- The museum is du Pont's house that he opened to the public
- Winterthur is a museum of American decorative arts and has a collection of 90,000 objects made or used in America between 1640-1860
- The house/museum has 175 rooms
- The museum has 1,000-acres of meadows and woods
- A natural 60-acre garden is located at the museum that du Pont designed. This garden is one of Americas best.
- Many graduate programs use Winterthur as an important center to study American art and cultures.
- Library was established in 1952
- Has many school and educational activity programs
- Has printed books and publications

#### Work Cited

<http://www.winterthur.org/thumbnail.php?id=310&size=6>

<http://www.winterthur.org/thumbnail.php?id=274&size=6>

<http://www.winterthur.org/thumbnail.php?id=631&size=6>

<http://www.winterthur.org>



## Mackenzie Alala

IDSN 2102

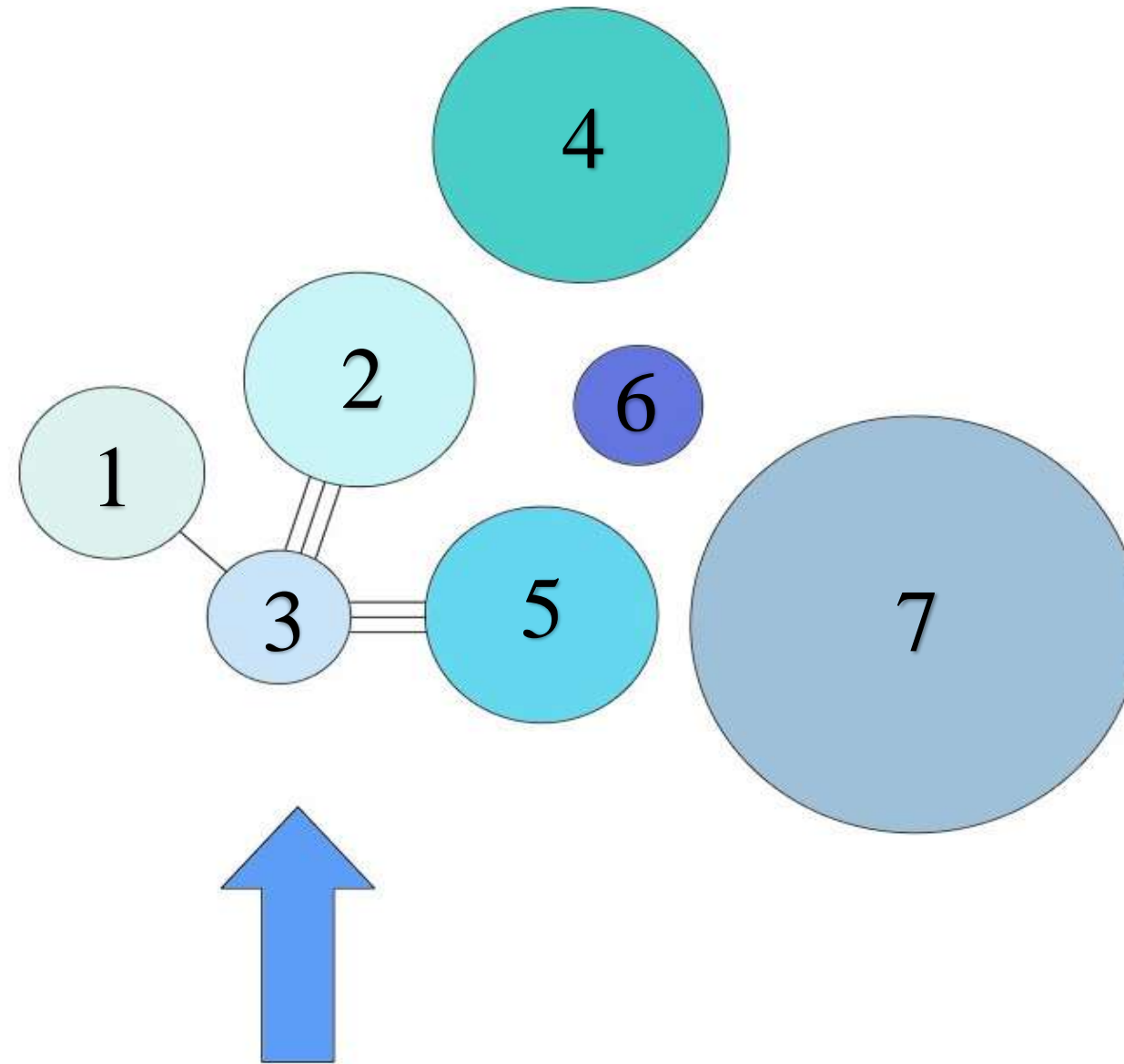
Interior Design Fundamentals

Professor Charles Gustina

Department of  
Interior Design & Merchandising  
College of Human Ecology  
East Carolina University

## Bubble Diagram

- 1: Director & Administrative Assistant - 220 Sq. Ft.
- 2: Large Conference Room & Small Conference Room- 760 Sq. Ft.
- 3: Receptionist- 0 Sq. Ft.
- 4: Technicians & Workroom- 560 Sq. Ft.
- 5: Exhibition Space- 600 Sq. Ft.
- 6: Storage, Pantry, & Barista- 340 Sq. Ft.
- 7: Guest Research Stations & Visiting Fellows- 2,904 Sq. Ft.



## Mackenzie Alala

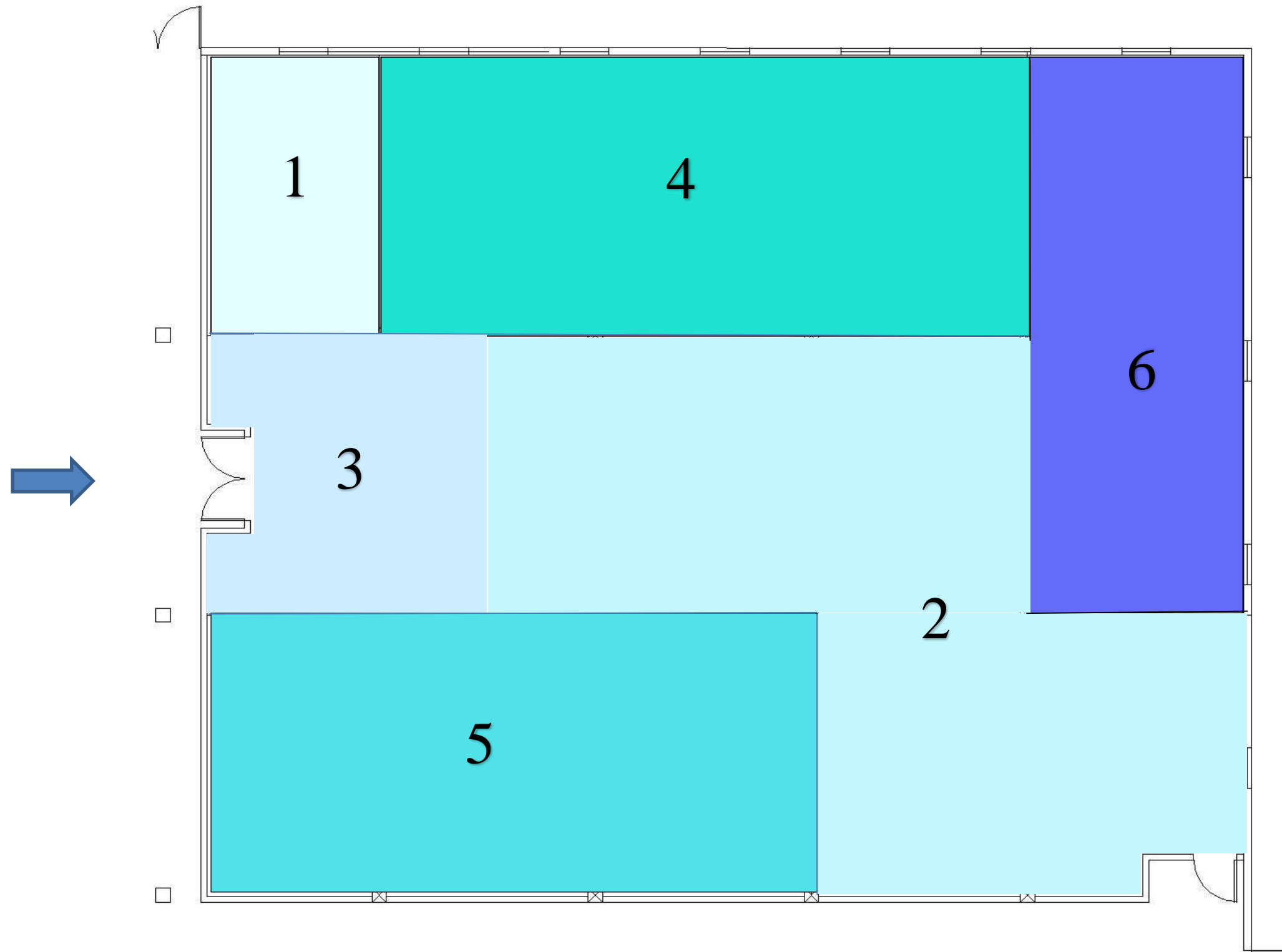
IDSN 2102  
Interior Design Fundamentals  
Professor Charles Gustina

Department of  
Interior Design & Merchandising  
College of Human Ecology  
East Carolina University

**Blocking Diagram-1<sup>st</sup> Floor Tenant Space**

**Mackenzie Alala**

**IDSN 2102  
Interior Design Fundamentals  
Professor Charles Gustina**



**Department of  
Interior Design & Merchandising  
College of Human Ecology  
East Carolina University**

# Program Spreadsheet

**Mackenzie Alala**

**IDSN 2102**  
**Interior Design Fundamentals**  
**Professor Charles Gustina**

## Gateway Center

### PERSONNEL

Position	Personnel Totals		Unit Square Ft.		Extended Sq. Feet	Equipment			Notes
	Current	Future	Office	Workstation		PC	Printer	Fax	
					0				
Director	0	1	120		120	1	1		
					0				
Administrative Assistant	0	1		100	100	1	1		Locate directly outside Dir office
					0				
Receptionist	0	1		0	0	1	1		Included in Reception/Waiting
					0				
Visiting Fellows	0	8		48	384	8			Locate away from Entry; 1 Shared printer
					0				
Guest Research Stations	0	70		36	2520				May be split up; 1 Shared printer
					0				
Technicians	0	2	100		200	4	2		Locate near Workroom
					0				
Barista	0	1			0				Included in Pantry
					0				
<b>Personnel Totals:</b>	<b>0</b>	<b>84</b>			<b>3324</b>	<b>15</b>	<b>5</b>	<b>0</b>	

### Department Summary

#### Information:

Personnel 3324 Square Ft.  
 Support 2360 Square Ft.  
**Sub Total:** 5684 Square Ft.  
 Circulation 1.54  
**Total Carpetable:** 8753.4 Square Ft.

### Interviewee:

Interview Date: \_\_\_\_\_  
 Revision Submitted: \_\_\_\_\_  
 Sign Off: \_\_\_\_\_

### SUPPORT SPACES

Space	Support/Equipment		Unit Square Feet	Extended Sq. Feet	Location	Notes
	Current	Future				
				0		
Reception/Waiting Area	0	1	300	300	Inside main entry, Visible from Admin Asst	Seating for 4 guests
				0		
Large Conference Room	0	1	400	400	Close to main entry	Seating for 14 at table, 6 at side; Full A/V
				0		
Small Conference Room	0	3	120	360	Adjacent to Large Conference	Seating for 4-6; Full A/V
				0		
Workroom	0	1	360	360	Locate away from Entry	Counter space and work tables
				0		
Storage	0	1	100	100	May be split and scattered through the space	
				0		
Pantry	0	1	240	240		
				0		
Exhibition Space	0	1	600	600	Close to main entry	Some walls for hanging work
<b>Support Totals:</b>				<b>2360</b>		

### Department Notes:

Historic character important to users  
 Space must be flexible

---



---



---



---



---



---



---



---



---



---

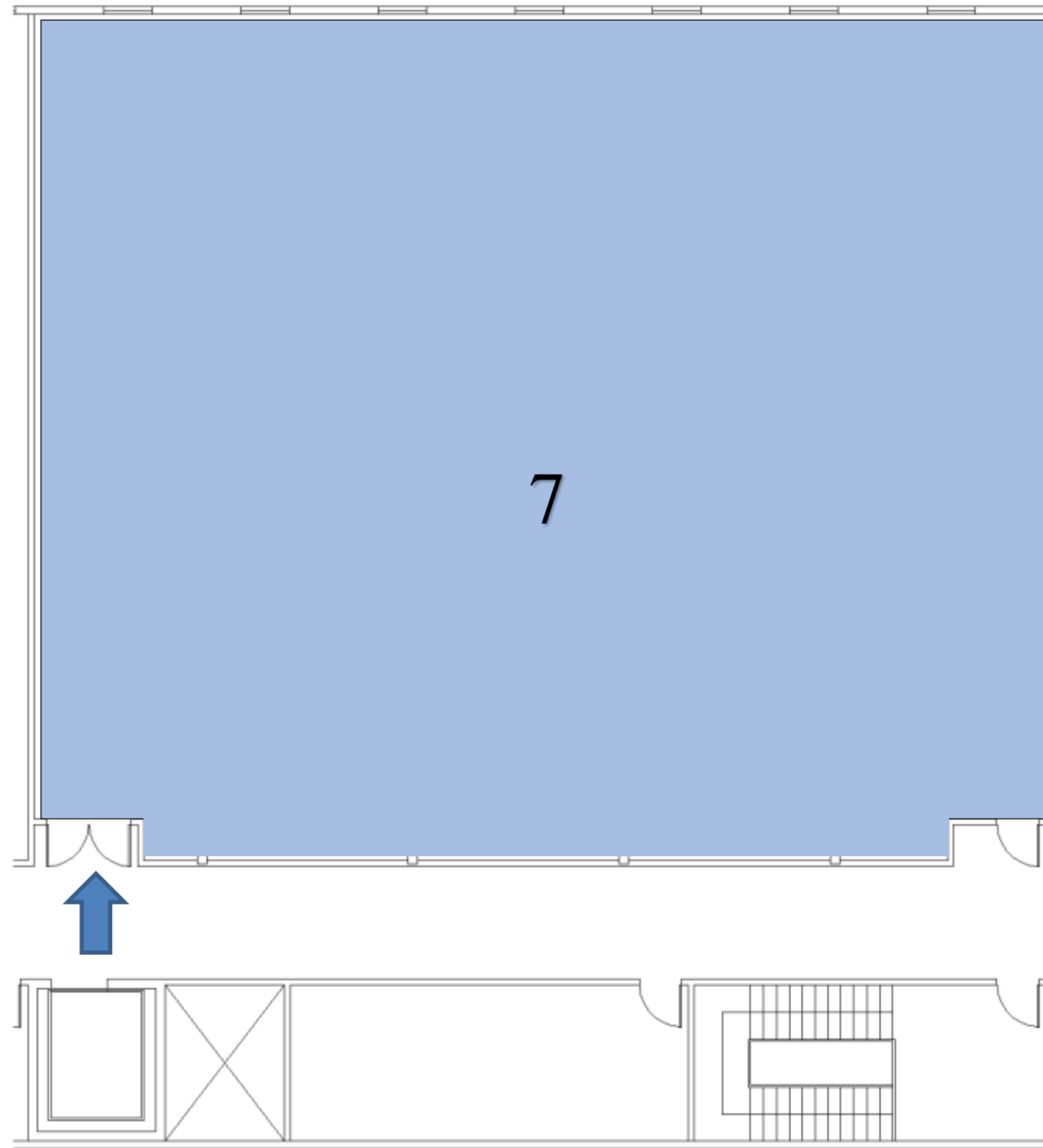
**Department of**  
**Interior Design & Merchandising**  
**College of Human Ecology**  
**East Carolina University**



# Blocking Diagram-2<sup>nd</sup> Floor Tenant Space

**Mackenzie Alala**

**IDSN 2102  
Interior Design Fundamentals  
Professor Charles Gustina**



**Department of  
Interior Design & Merchandising  
College of Human Ecology  
East Carolina University**

## Workspaces in AutoCAD

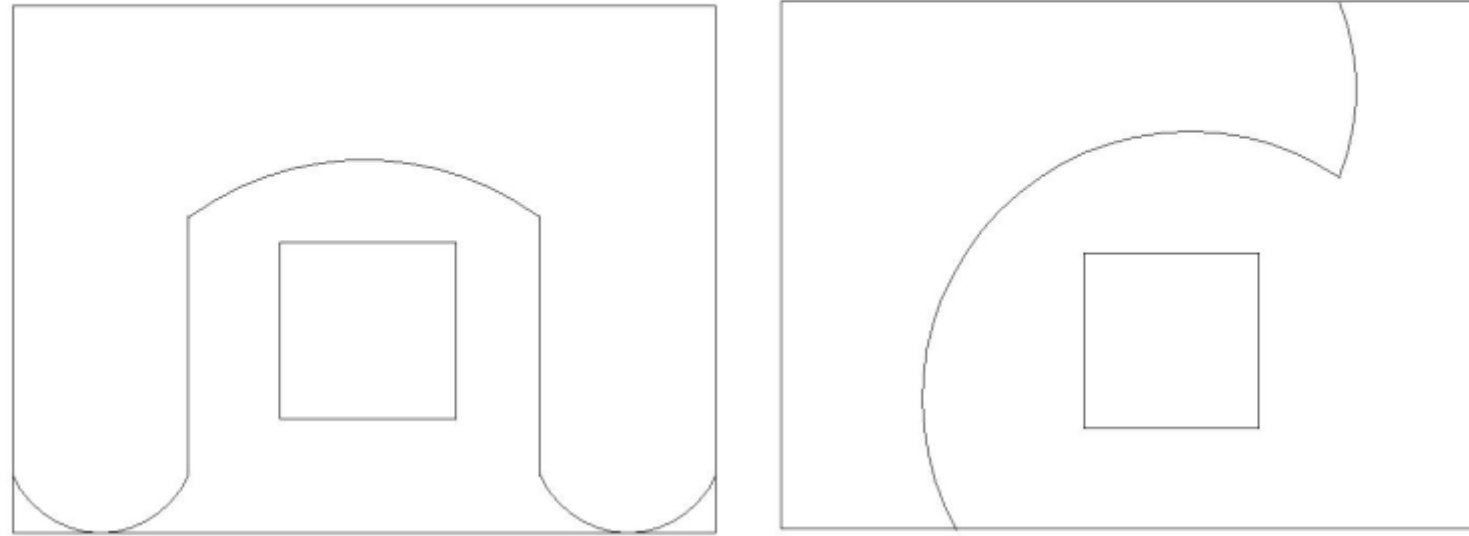
**Mackenzie Alala**

**IDSN 2102**

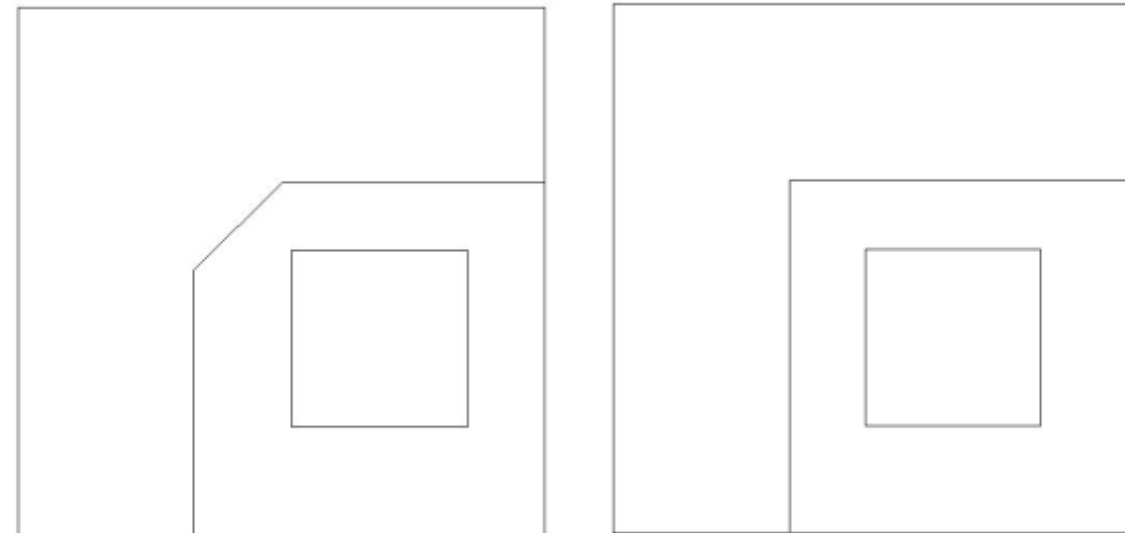
**Interior Design Fundamentals**

**Professor Charles Gustina**

6x8



6x6

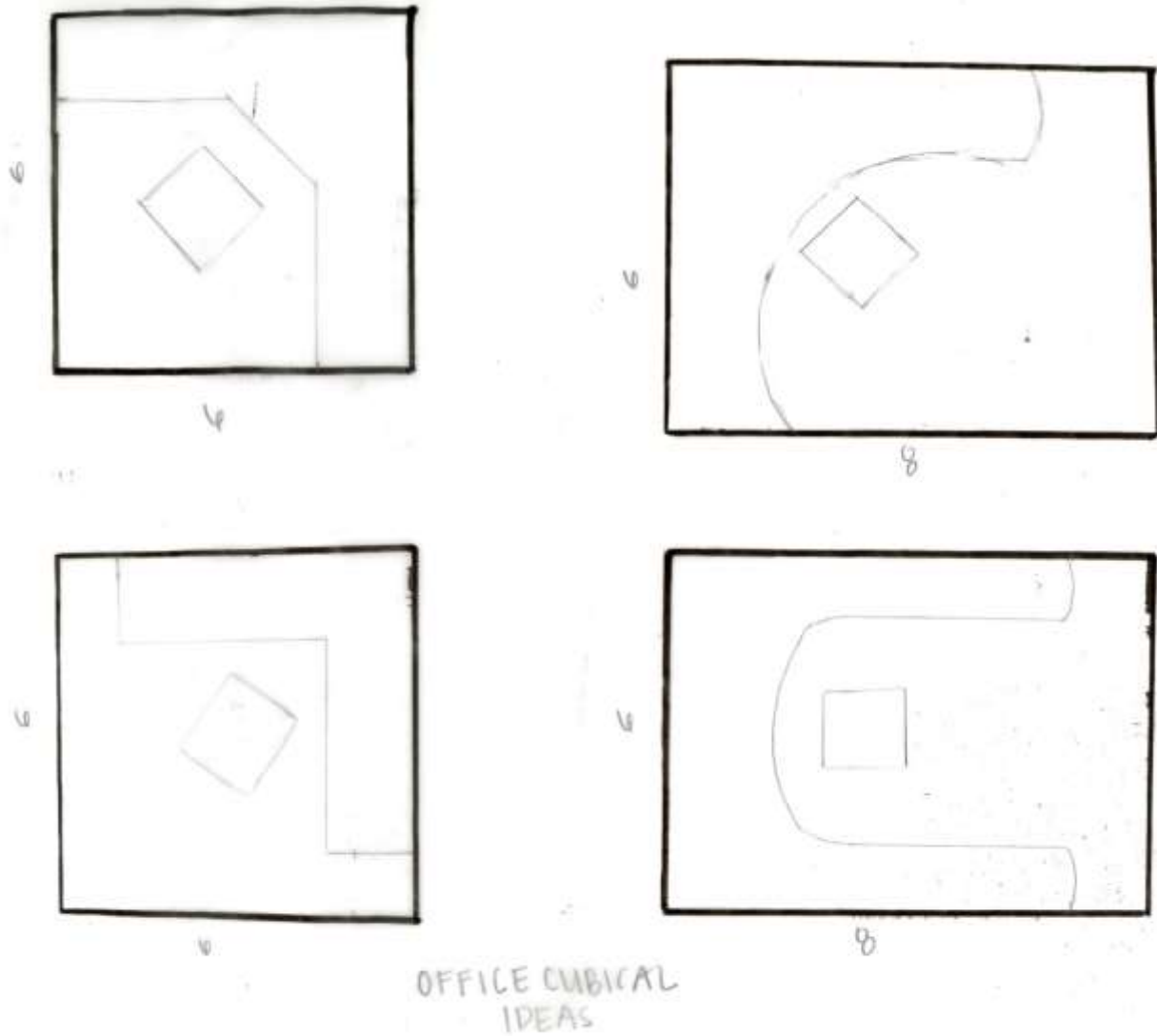


**Department of  
Interior Design & Merchandising  
College of Human Ecology  
East Carolina University**

# Workspace Sketches

**Mackenzie Alala**

**IDSN 2102  
Interior Design Fundamentals  
Professor Charles Gustina**



**Department of  
Interior Design & Merchandising  
College of Human Ecology  
East Carolina University**

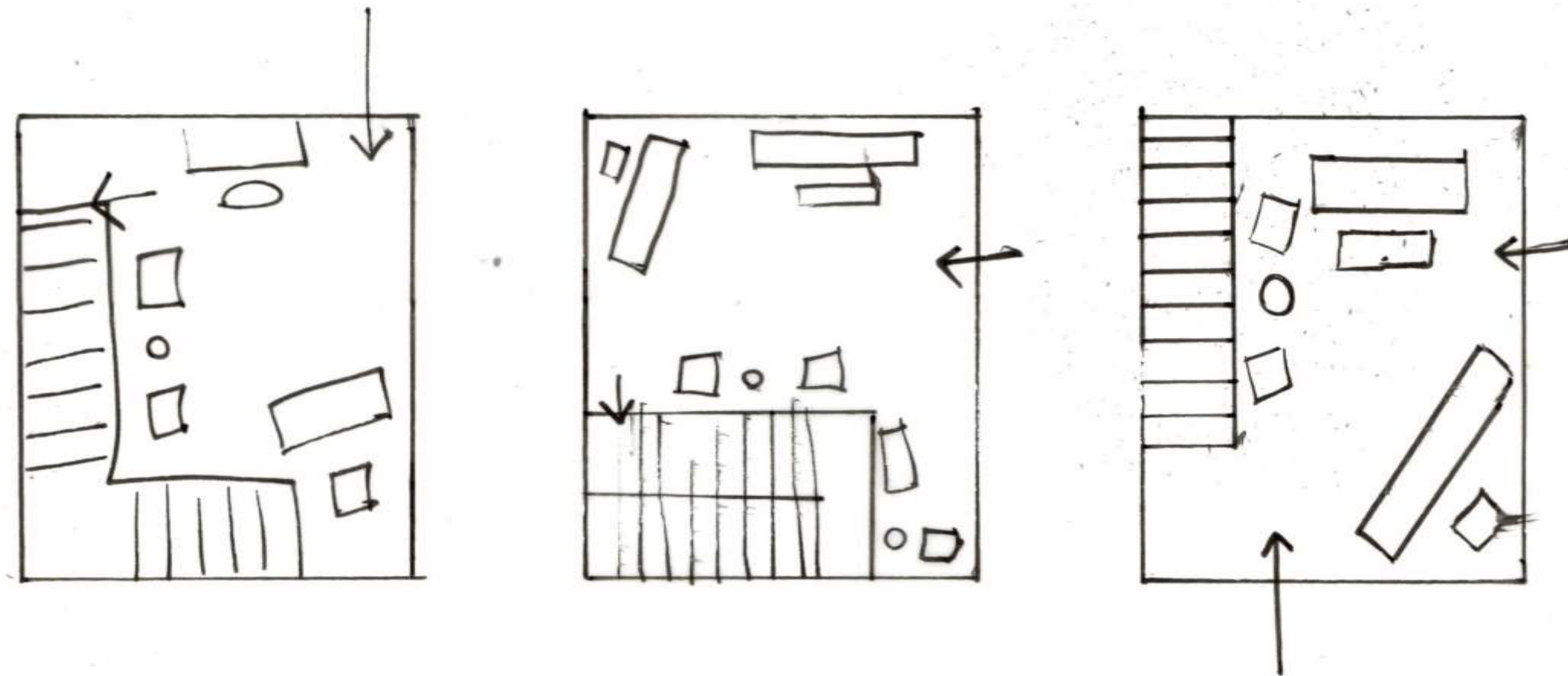
## Plan and Stair Sketches

**Mackenzie Alala**

IDSN 2102

Interior Design Fundamentals

Professor Charles Gustina

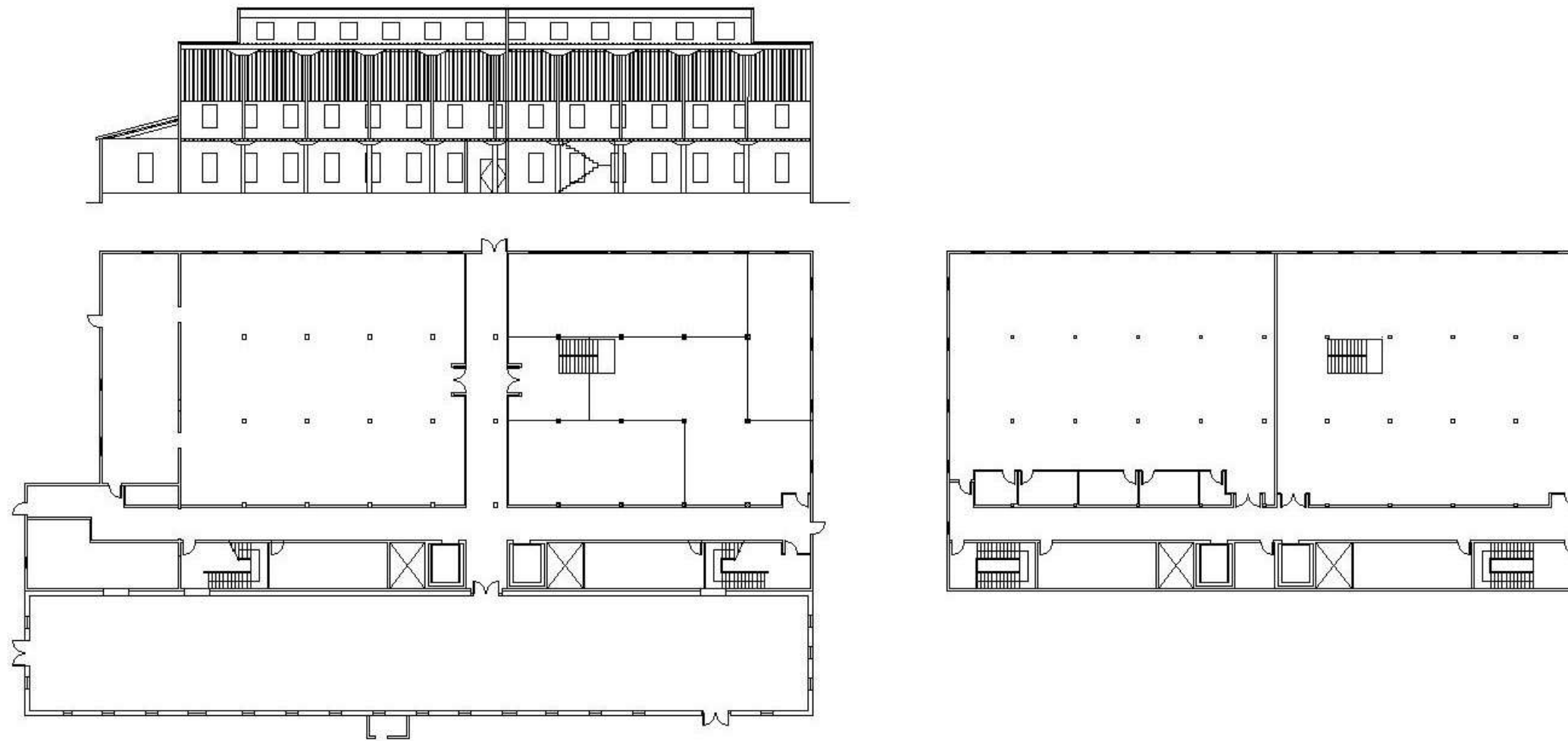


Department of  
Interior Design & Merchandising  
College of Human Ecology  
East Carolina University

# Stair Plan in AutoCAD- Scissor Stairs

**Mackenzie Alala**

**IDSN 2102  
Interior Design Fundamentals  
Professor Charles Gustina**

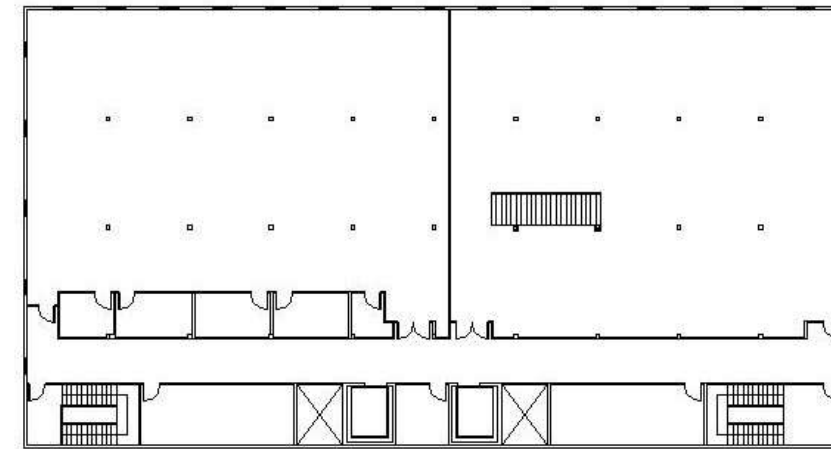
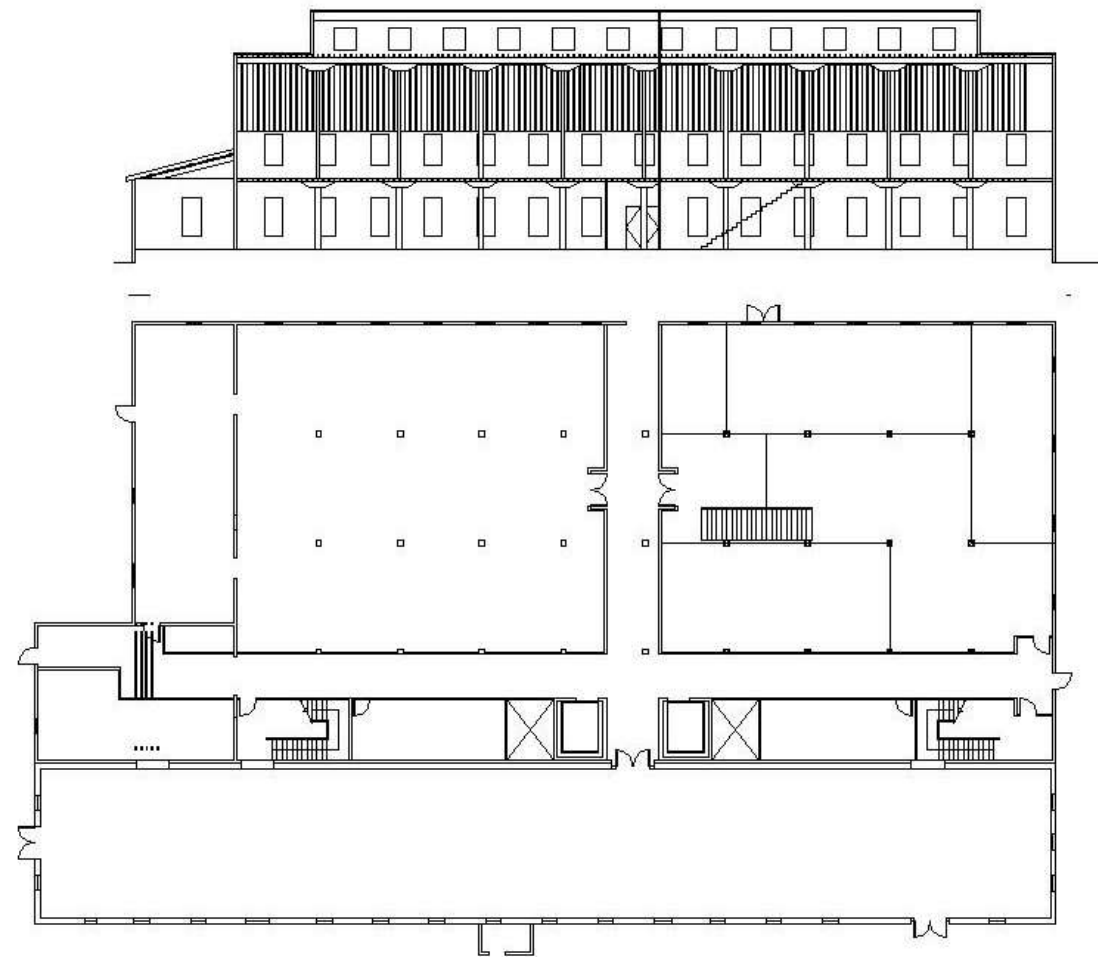


**Department of  
Interior Design & Merchandising  
College of Human Ecology  
East Carolina University**

# Stair Plan in AutoCAD- Straight Stairs

**Mackenzie Alala**

**IDSN 2102  
Interior Design Fundamentals  
Professor Charles Gustina**

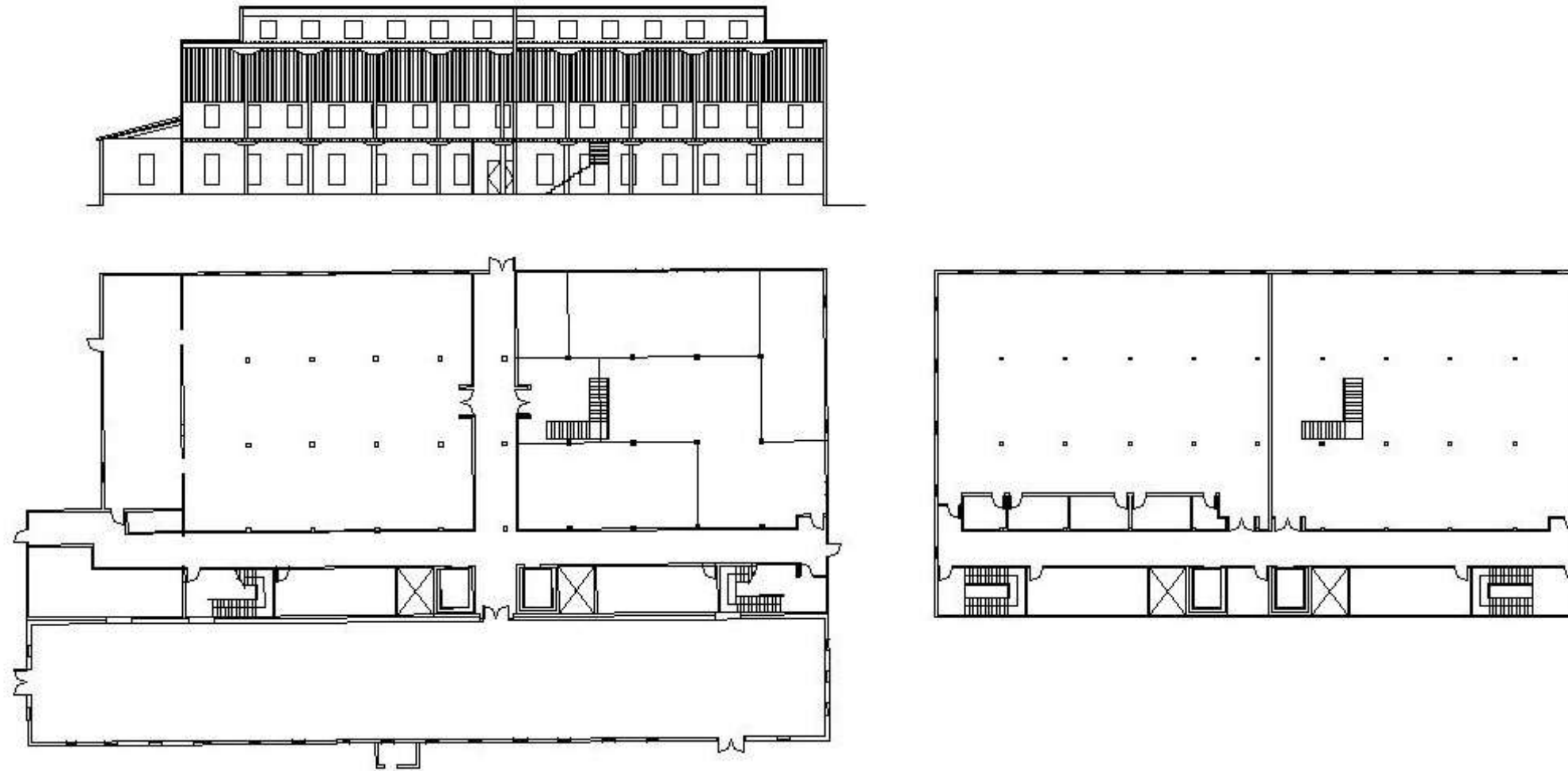


**Department of  
Interior Design & Merchandising  
College of Human Ecology  
East Carolina University**

# Stair Plan in AutoCAD- L-Shaped Stairs

**Mackenzie Alala**

**IDSN 2102  
Interior Design Fundamentals  
Professor Charles Gustina**



**Department of  
Interior Design & Merchandising  
College of Human Ecology  
East Carolina University**

## L-Shaped Stairs-Sketch Up



**Mackenzie Alala**

**IDSN 2102  
Interior Design Fundamentals  
Professor Charles Gustina**

**Department of  
Interior Design & Merchandising  
College of Human Ecology  
East Carolina University**



## Straight Stairs- Sketch Up



**Mackenzie Alala**

**IDSN 2102  
Interior Design Fundamentals  
Professor Charles Gustina**

**Department of  
Interior Design & Merchandising  
College of Human Ecology  
East Carolina University**

## Scissor Stairs- Sketch Up



**Mackenzie Alala**

**IDSN 2102  
Interior Design Fundamentals  
Professor Charles Gustina**

**Department of  
Interior Design & Merchandising  
College of Human Ecology  
East Carolina University**



# **Hughes Tobacco Warehouse**

Mackenzie Alala

IDSN 2101

Fall 2017

Portfolio 1