

Hughes tobacco warehouse

IDSN 2101

Gustina

Semester 1

Jacob Austin



## Client Profile

**This state-of-the-art facility allows visitors and scholars to research the rich history of the region, as evidenced by the implements and furnishings used by residents. Research published and programs conducted by the Center paint a detailed portrait of everyday life in the area**

**The Center includes:**

- **Visitor reception area**
- **Exhibition space**
- **Meeting rooms with full audio/video capabilities**
- **Facilities for researchers**
- **Documentation workroom**



# Programming

## Gateway Center

### PERSONNEL

Position	Personnel Totals		Unit Square Ft.		Extended Sq. Feet	Equipment			Notes
	Current	Future	Office	Workstation		PC	Printer	Fax	
					0				
Director	0	1	120		120	1	1		
					0				
Administrative Assistant	0	1		100	100	1	1		Locate directly outside Dir office
					0				
Receptionist	0	1		0	0	1	1		Included in Reception/w/aiting
					0				
Visiting Fellows	0	8		48	384	8			Locate away from Entry; 1 Shared printer
					0				
Guest Research Stations	0	70		36	2520				May be split up; 1 Shared printer
					0				
Technicians	0	2	100		200	4	2		Locate near Workroom
					0				
Barista	0	1			0				Included in Pantry
					0				
<b>Personnel Totals:</b>	<b>0</b>	<b>84</b>			<b>3324</b>	<b>15</b>	<b>5</b>	<b>0</b>	

#### Department Summary

**Information:**  
 Personnel 3324 Square Ft.  
 Support 2360 Square Ft.  
**Sub Total:** 5684 Square Ft.  
 Circulation 154  
**Total Carpetable:** 8753 Square Ft.

#### Interviewee:

Interview Date: \_\_\_\_\_  
 Revision Submitted: \_\_\_\_\_  
 Sign Off: \_\_\_\_\_

### SUPPORT SPACES

Space	Support/Equipment		Unit Square Feet		Extended Sq. Feet	Location	Notes
	Current	Future					
					0		
Reception/w/aiting Area	0	1		300	300	Inside main entry; Visible from Admin Asst	Seating for 4 quests
					0		
Large Conference Room	0	1		400	400	Close to main entry	Seating for 14 at table, 6 at side; Full A/V
					0		
Small Conference Room	0	3		120	360	Adjacent to Large Conference	Seating for 4-6; Full A/V
					0		
Workroom	0	1		360	360	Locate away from Entry	Counter space and work tables
					0		
Storage	0	1		100	100	May be split and scattered through the space	
					0		
Pantry	0	1		240	240		
					0		
Exhibition Space	0	1		600	600	Close to main entry	Some walls for hanging work
<b>Support Totals:</b>					<b>2360</b>		

#### Department Notes:

Historic character important to users  
 Space must be flexible

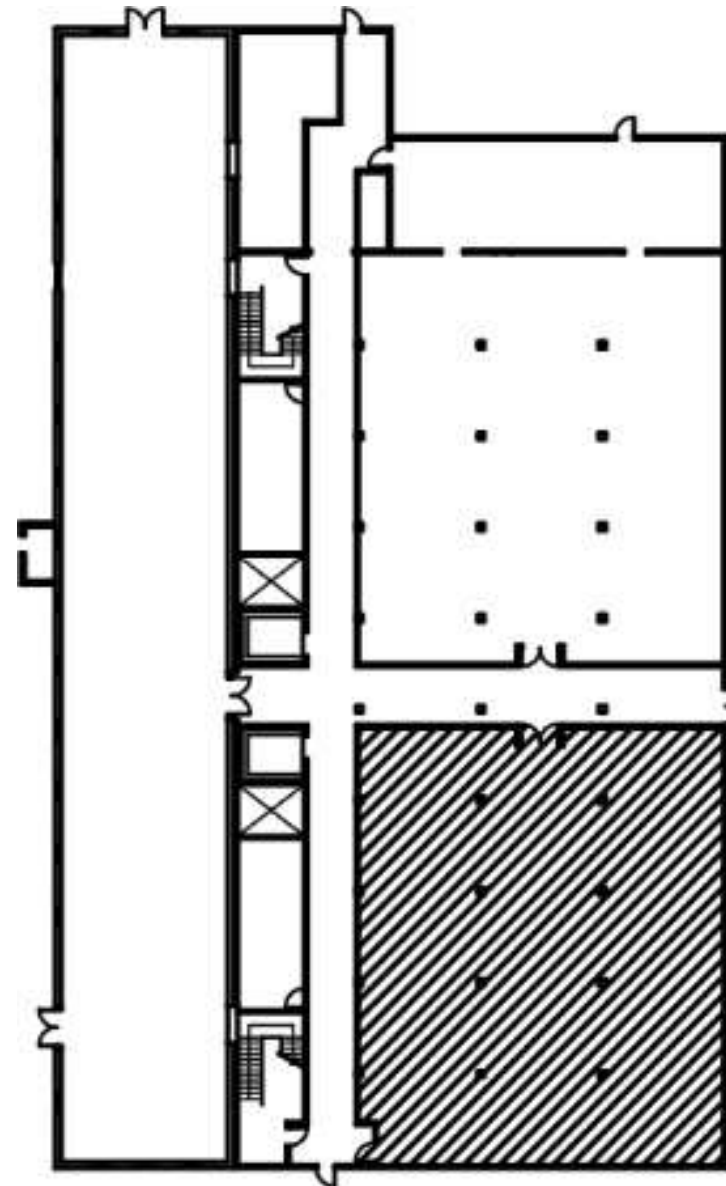


## Site Profile

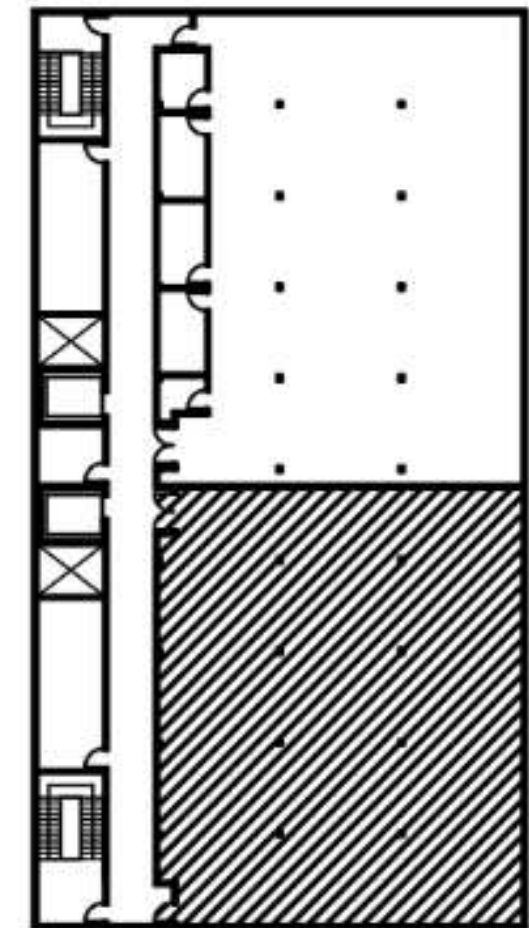
- Pritchard-Hughes Tobacco Building  
Pitt and 11<sup>th</sup> Streets  
Greenville NC
- Erected: first quarter of the Twentieth Century
- Heavy timber construction
- Client to occupy tenant space on first and second floors



Building Exterior

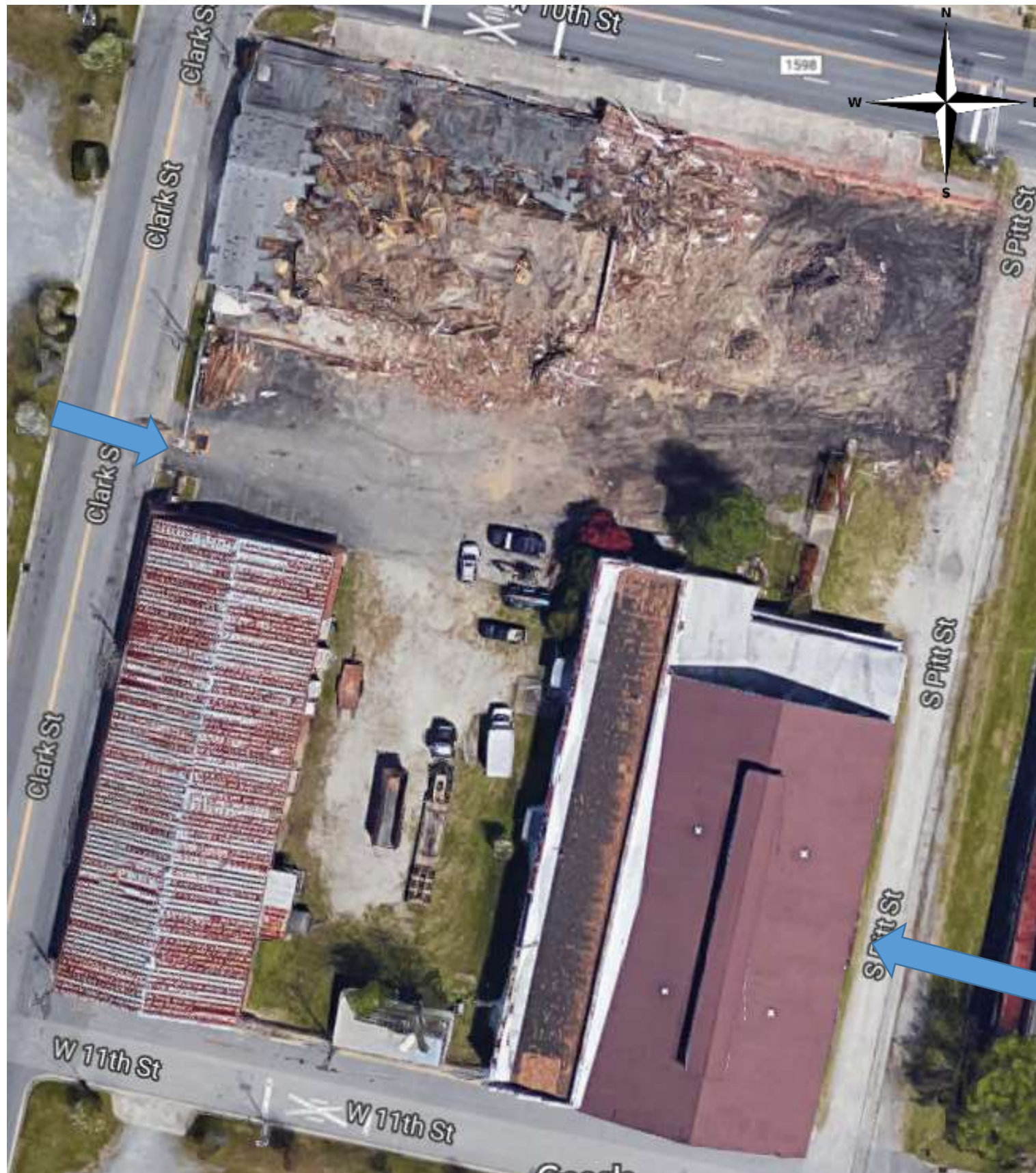


1st Floor Tenant Area  
4,280 Square Feet



2<sup>nd</sup> Floor Tenant Area  
4,280 Square Feet

## Site Analysis



### Day Light:

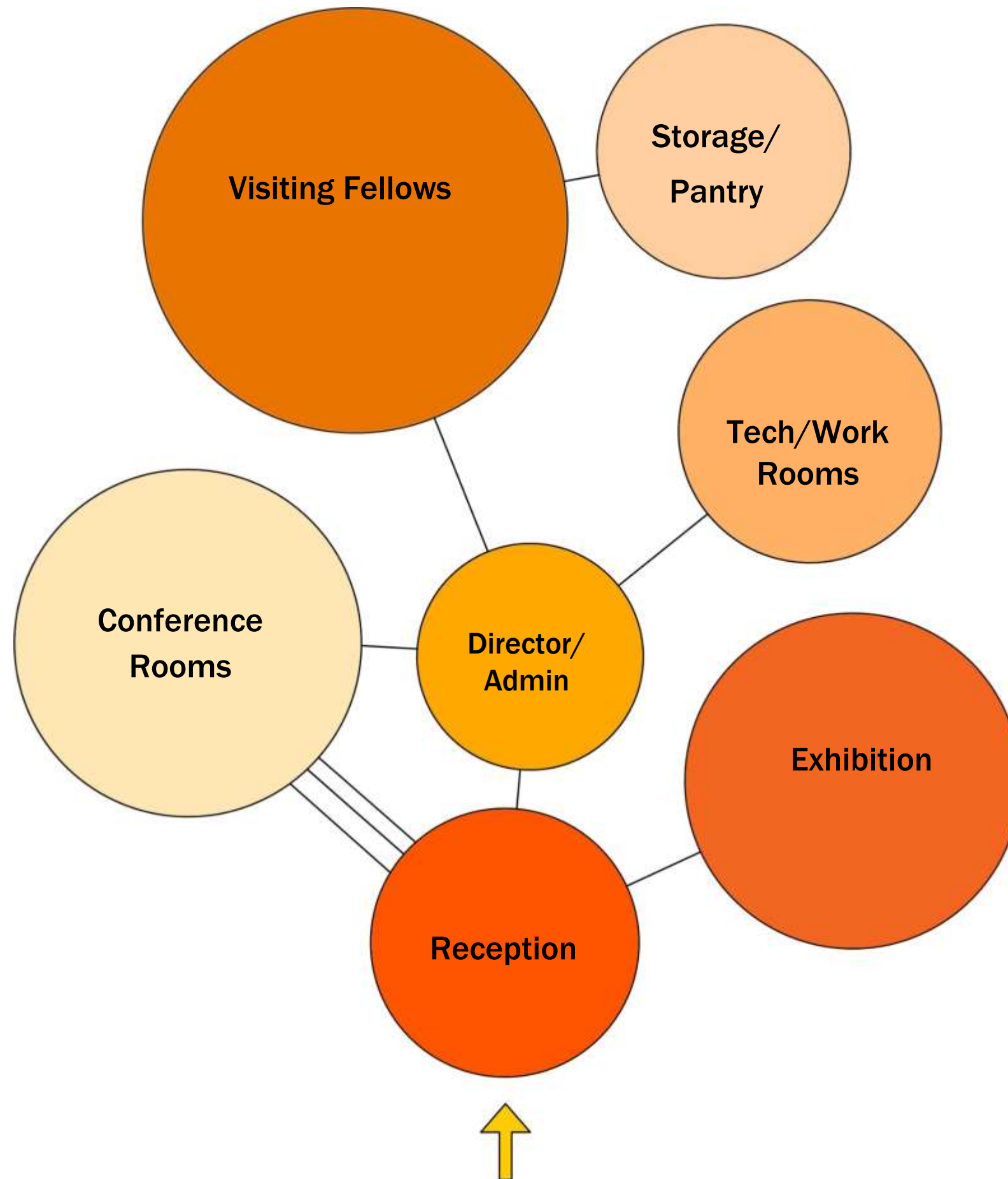
The morning light will hit the East side of the building. This is an advantage because of the multitude of windows. The sun setting on the West side of the building will have the same effect as it rising in the East. The windows on the top will allow natural sunlight to come in above the workstations.

# Research

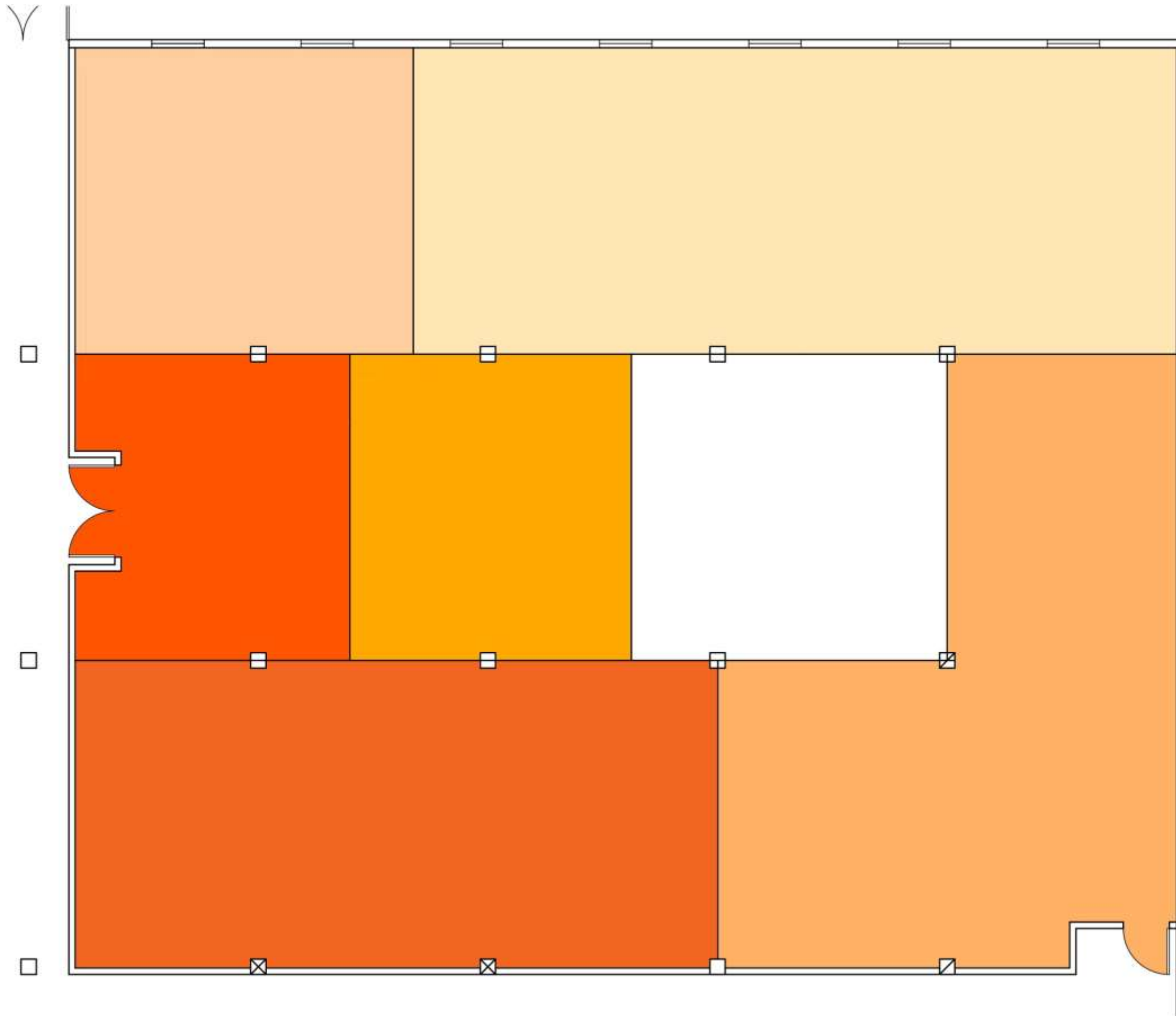
- **Greenville History**
  - Once known as the Queen City on the Tar
- **Tobacco building**
  - Built 1905
  - One of the smaller warehouses in Greenville
- **History and trends in design**
  - Offices used to be just for higher up executives
  - In the 1580's the first example of co-working was recorded
- **Furniture systems**
  - Started off as minimal furniture with large Tables
  - Now independent desk with computers are used
- **Generational Aptitudes**
  - What once was typewriters are now computers
  - Less filing cabinets more Digital storage
- **Embodied Energy**
  - Energy used for the manufacturing of the materials and building
  - Different from operational energy
  - Operational energy- energy used to run the building
- **Leed Building credits**
  - Focuses on certifying green buildings
  - 3 levels of ratings



# Bubble Diagram

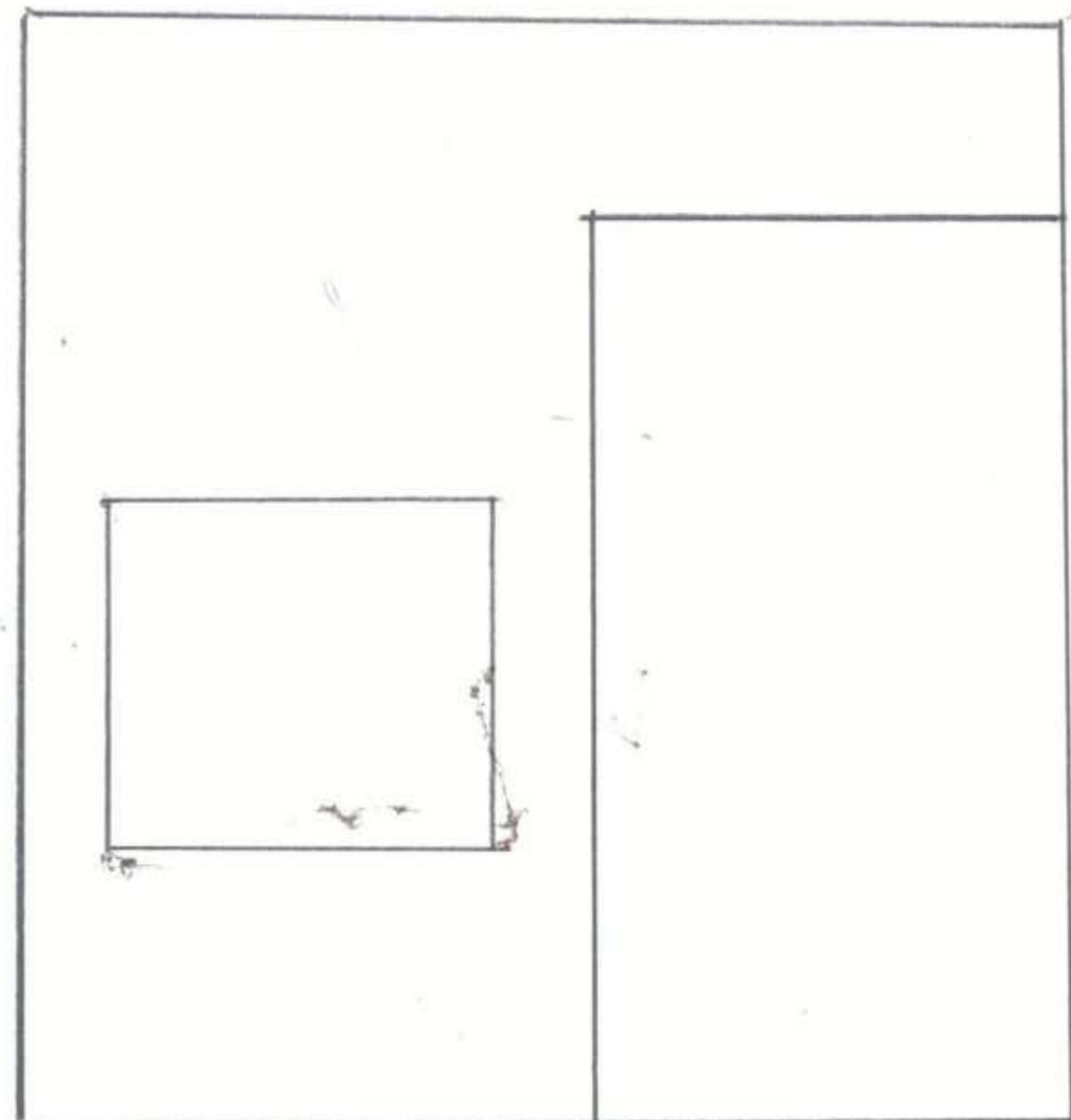
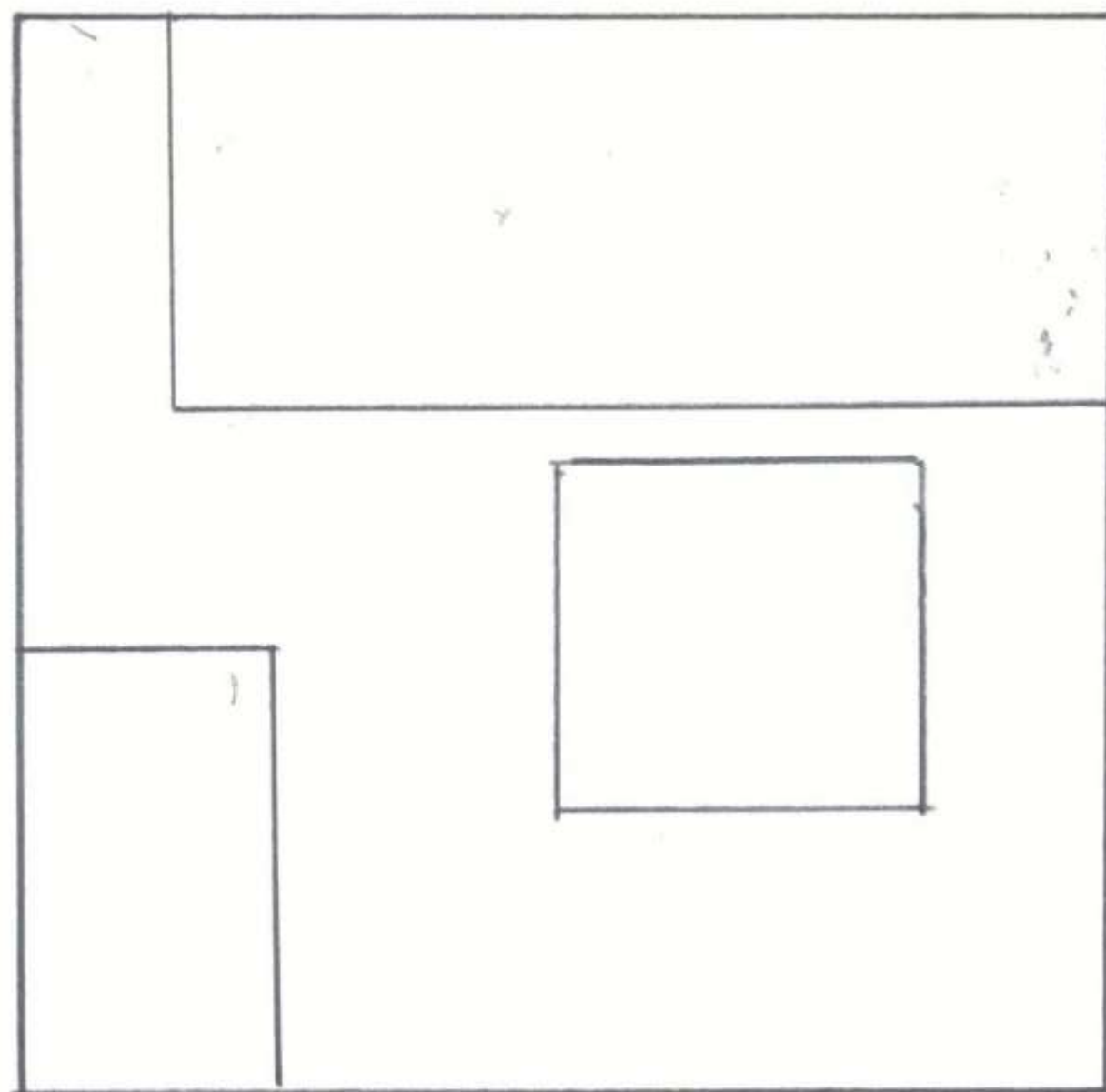


# Blocking Diagram

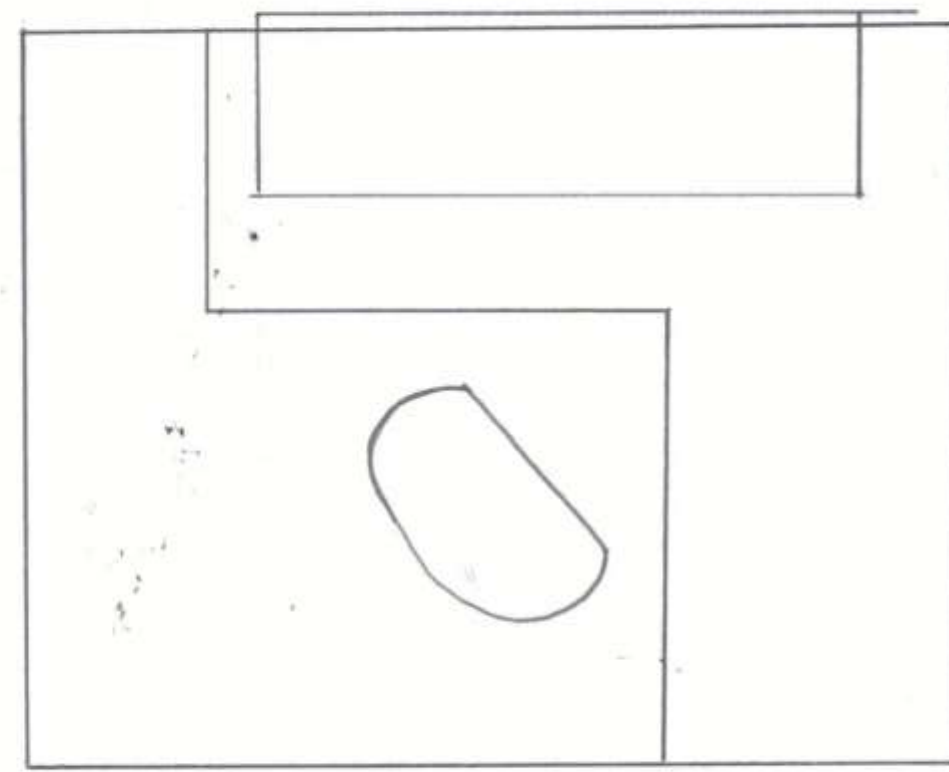
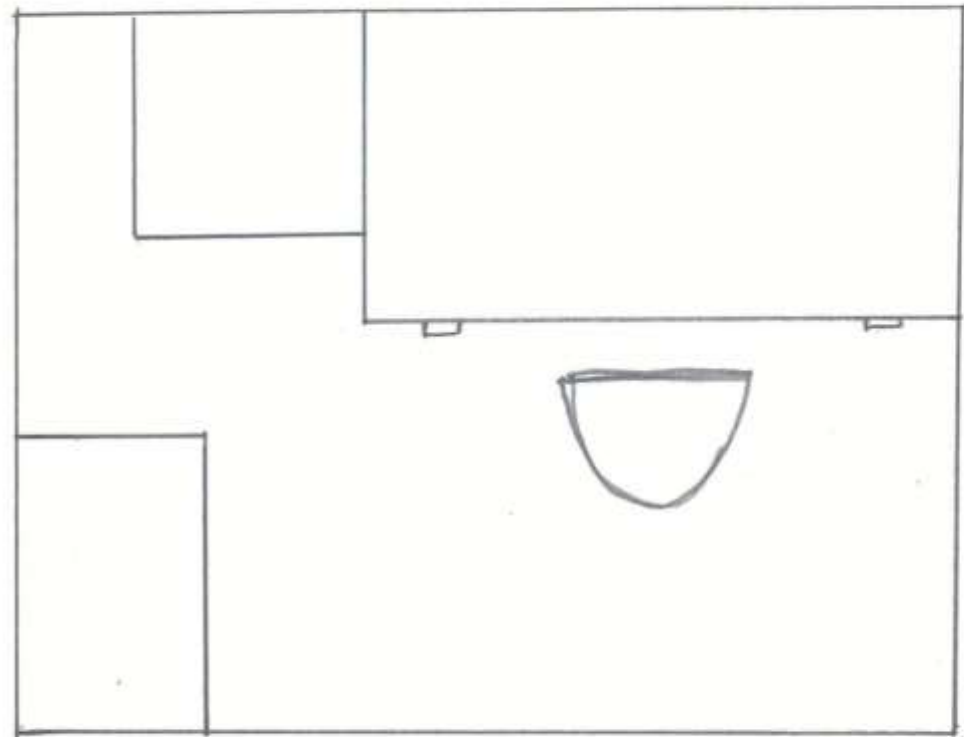




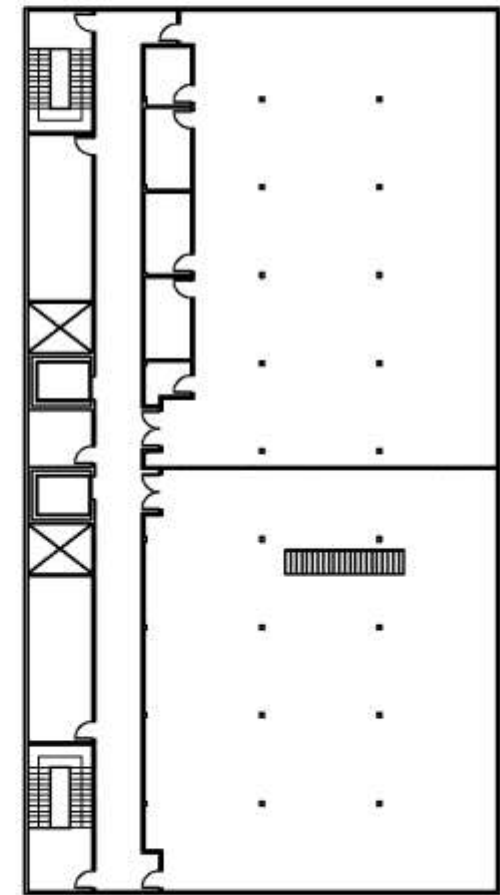
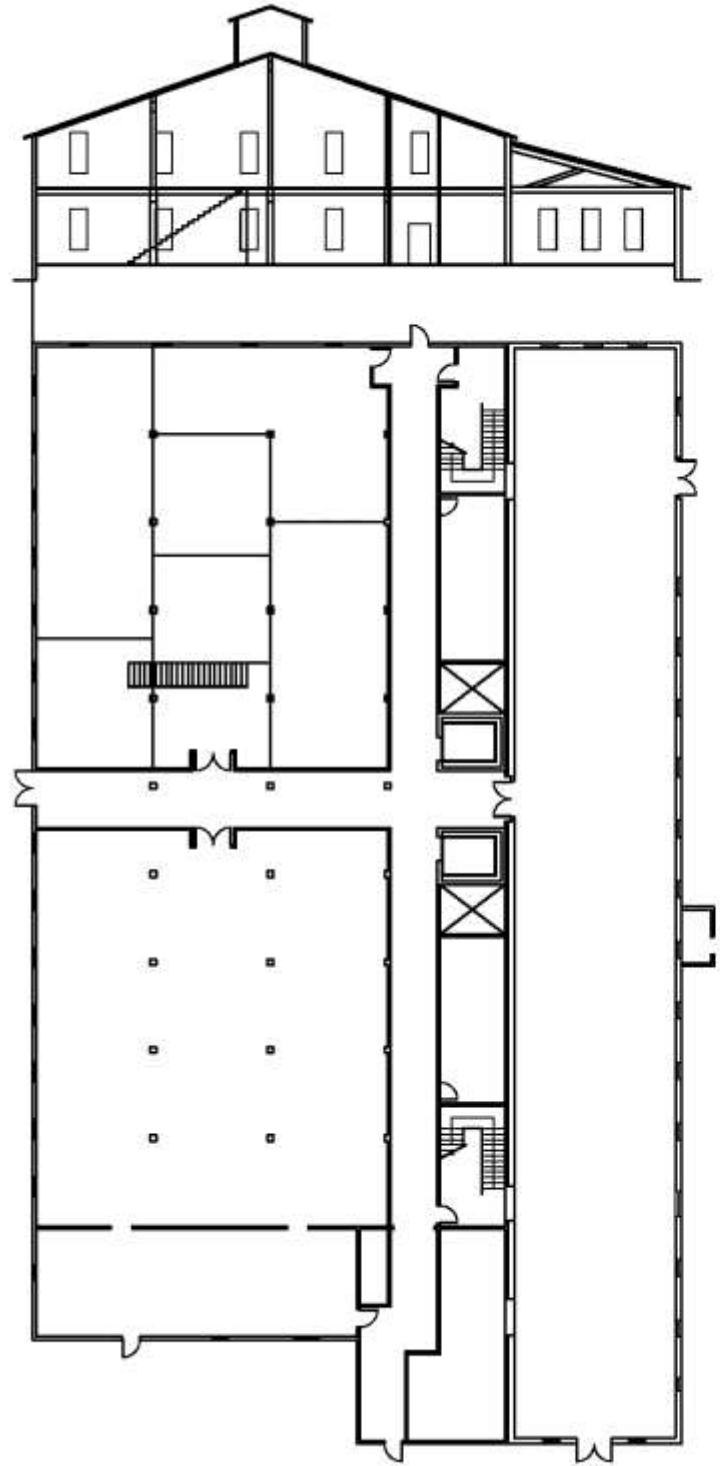
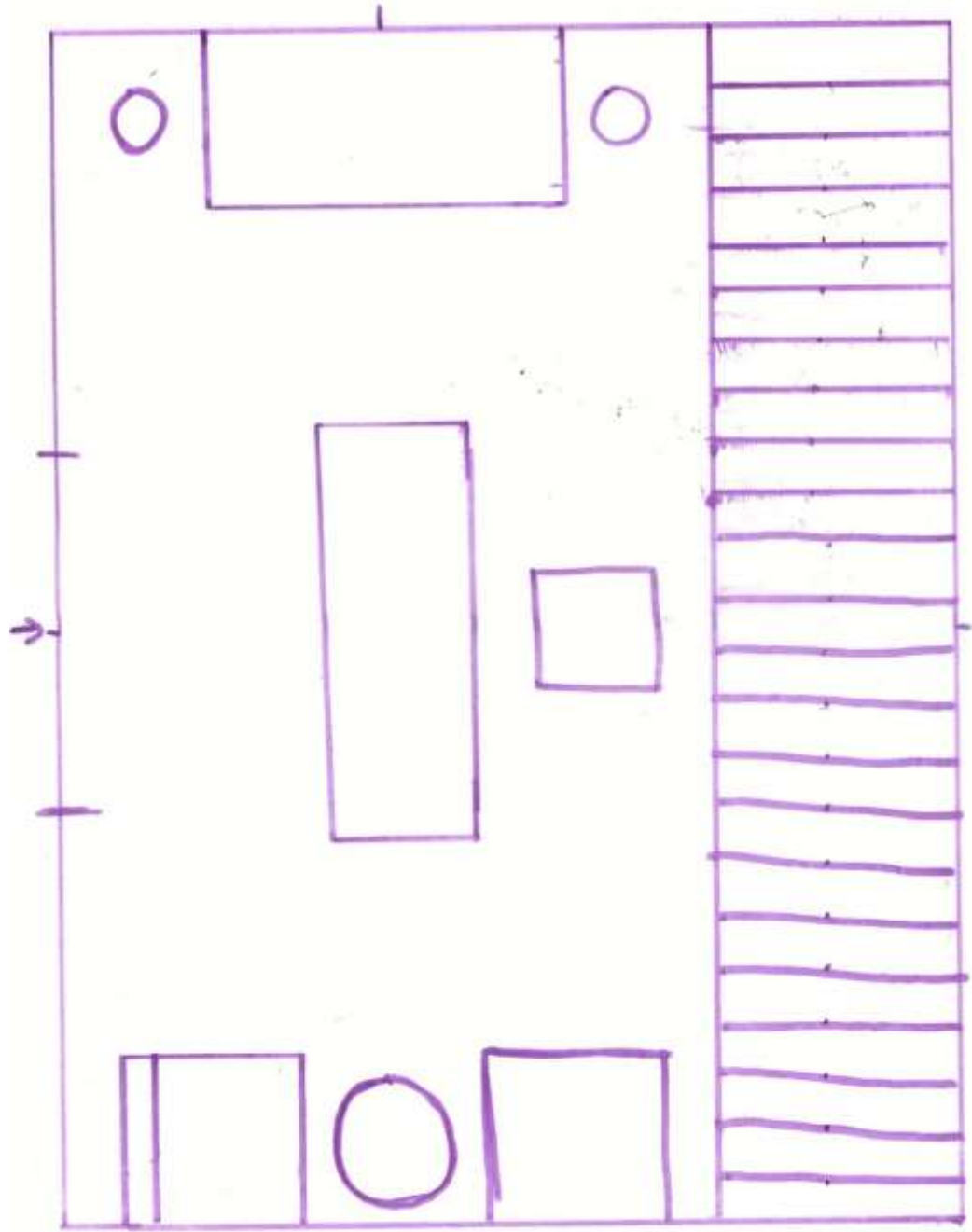
# Space Standard Drawings 6X6



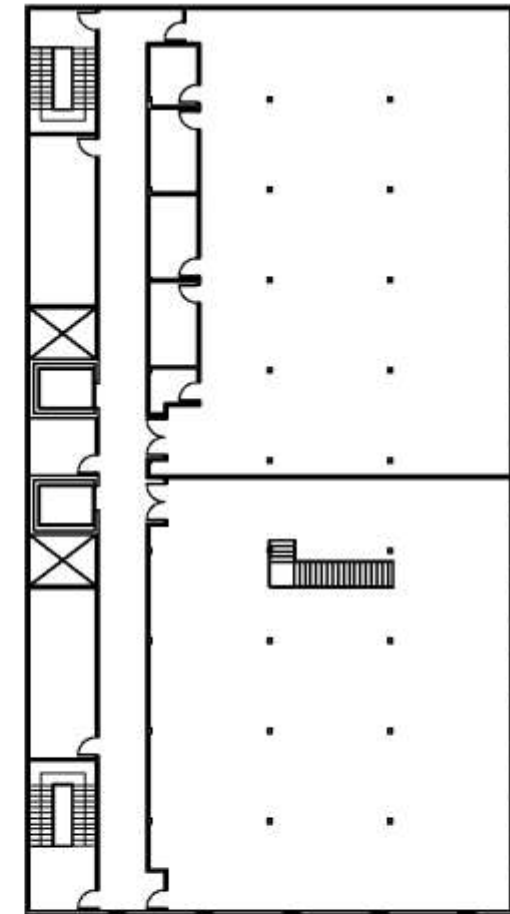
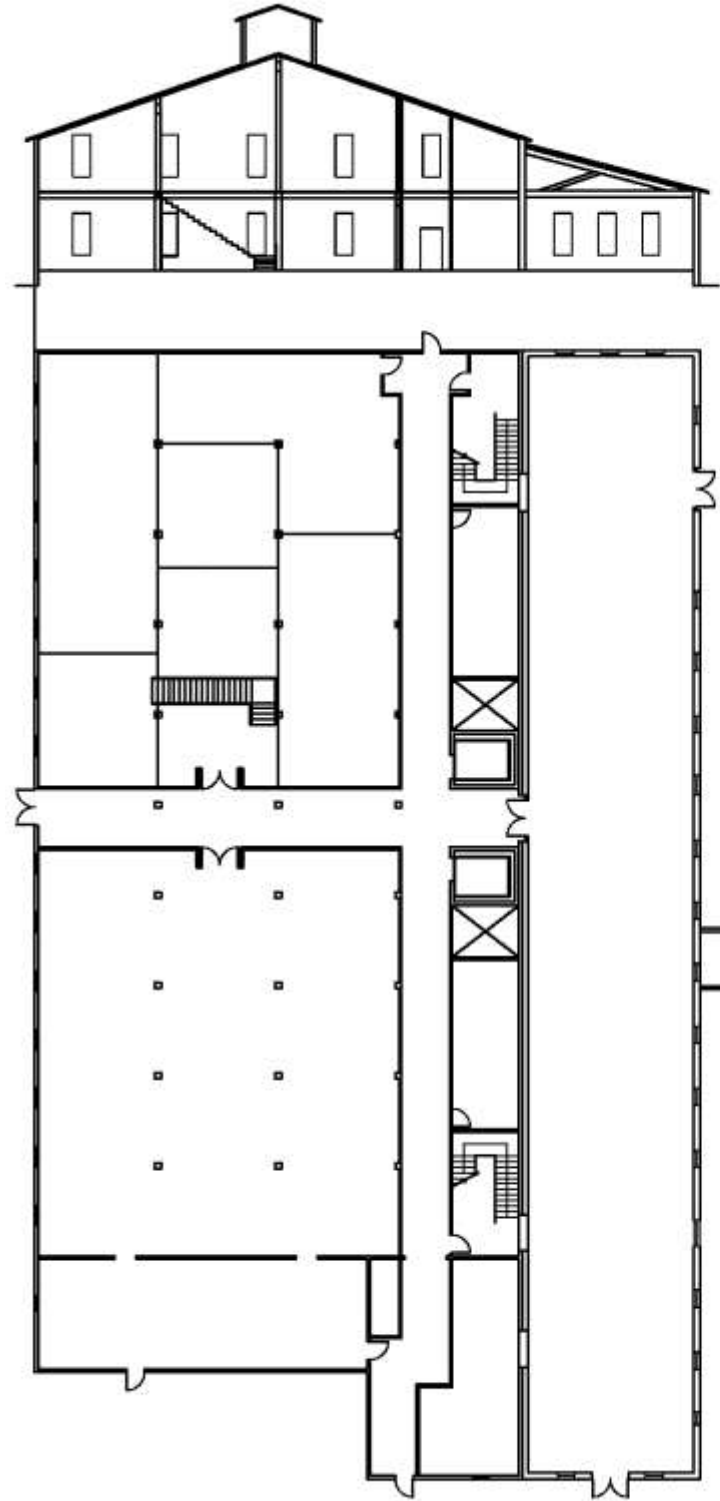
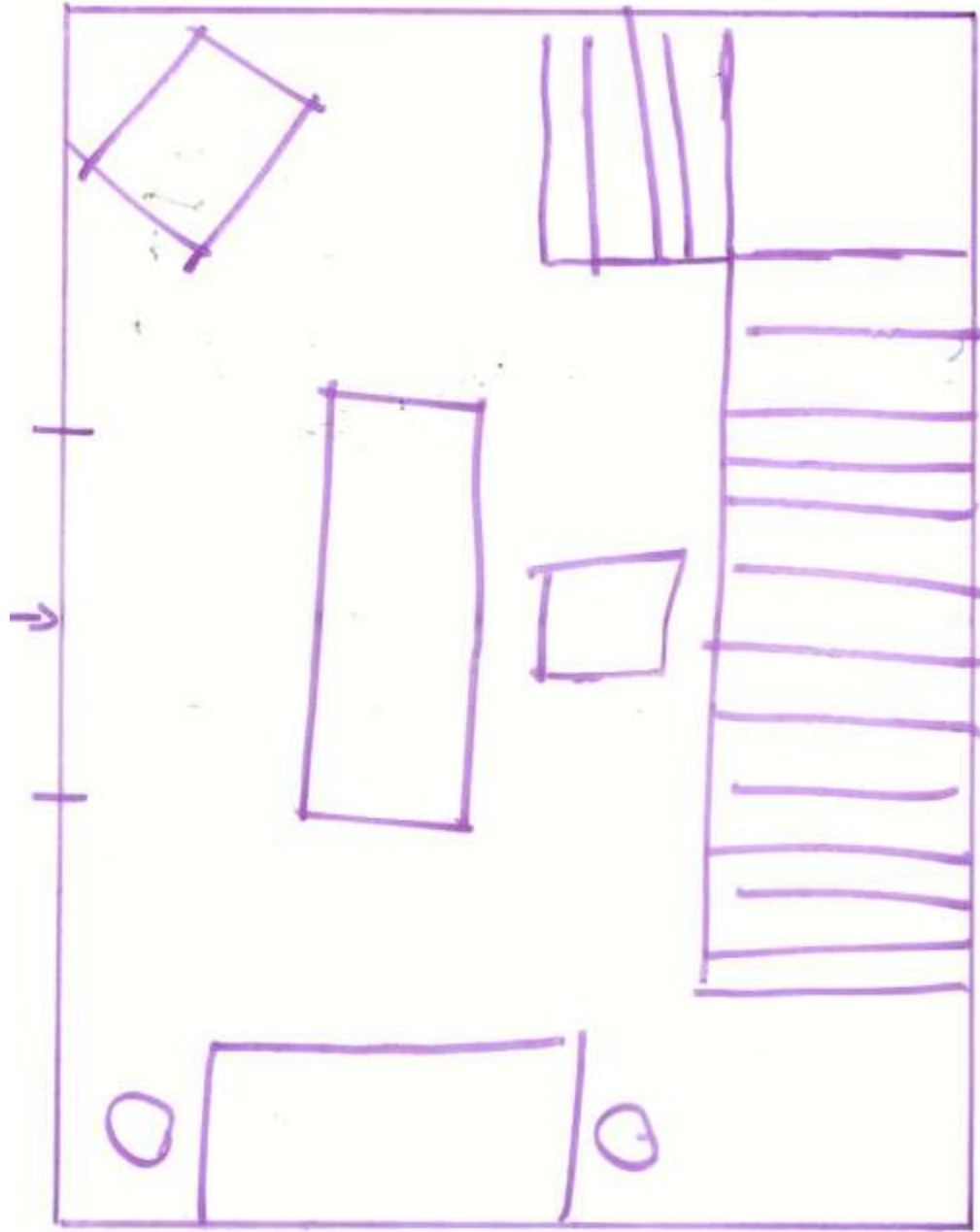
# Space Standard Drawing 8X8



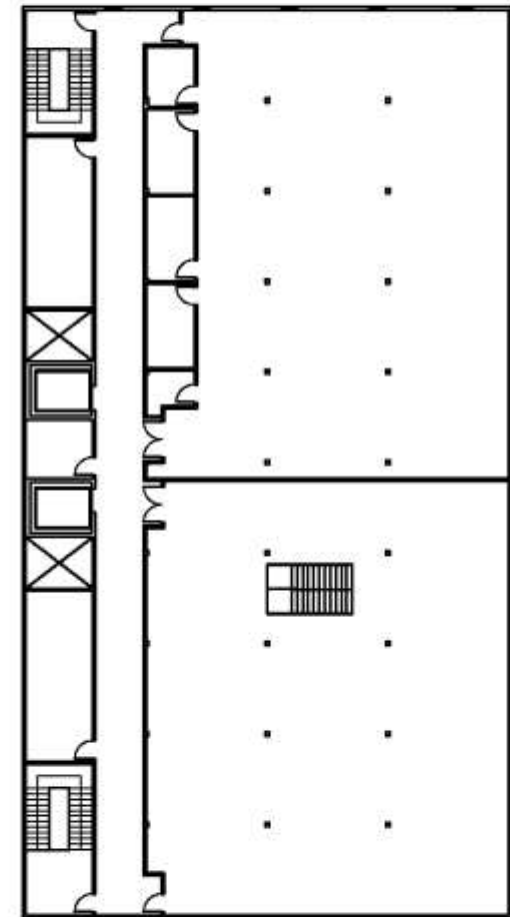
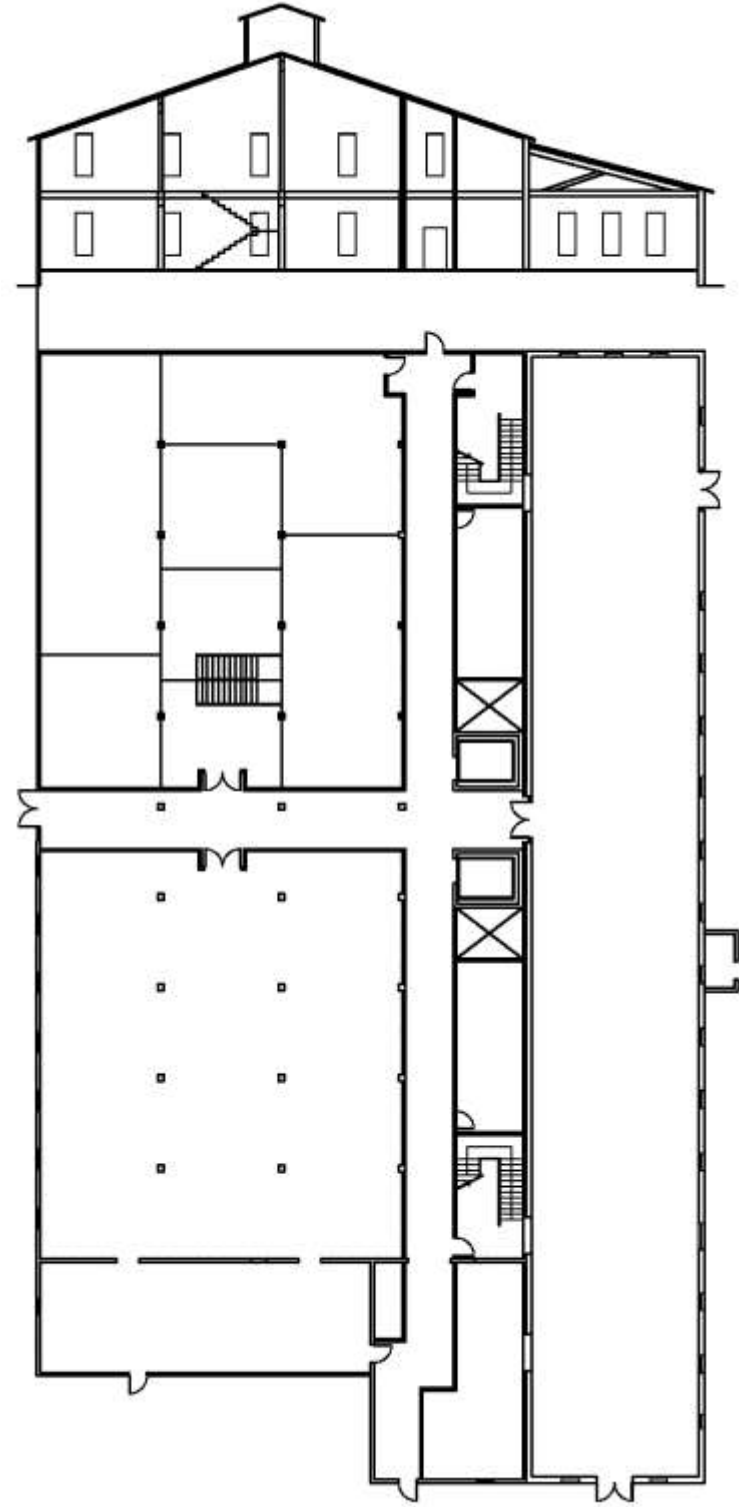
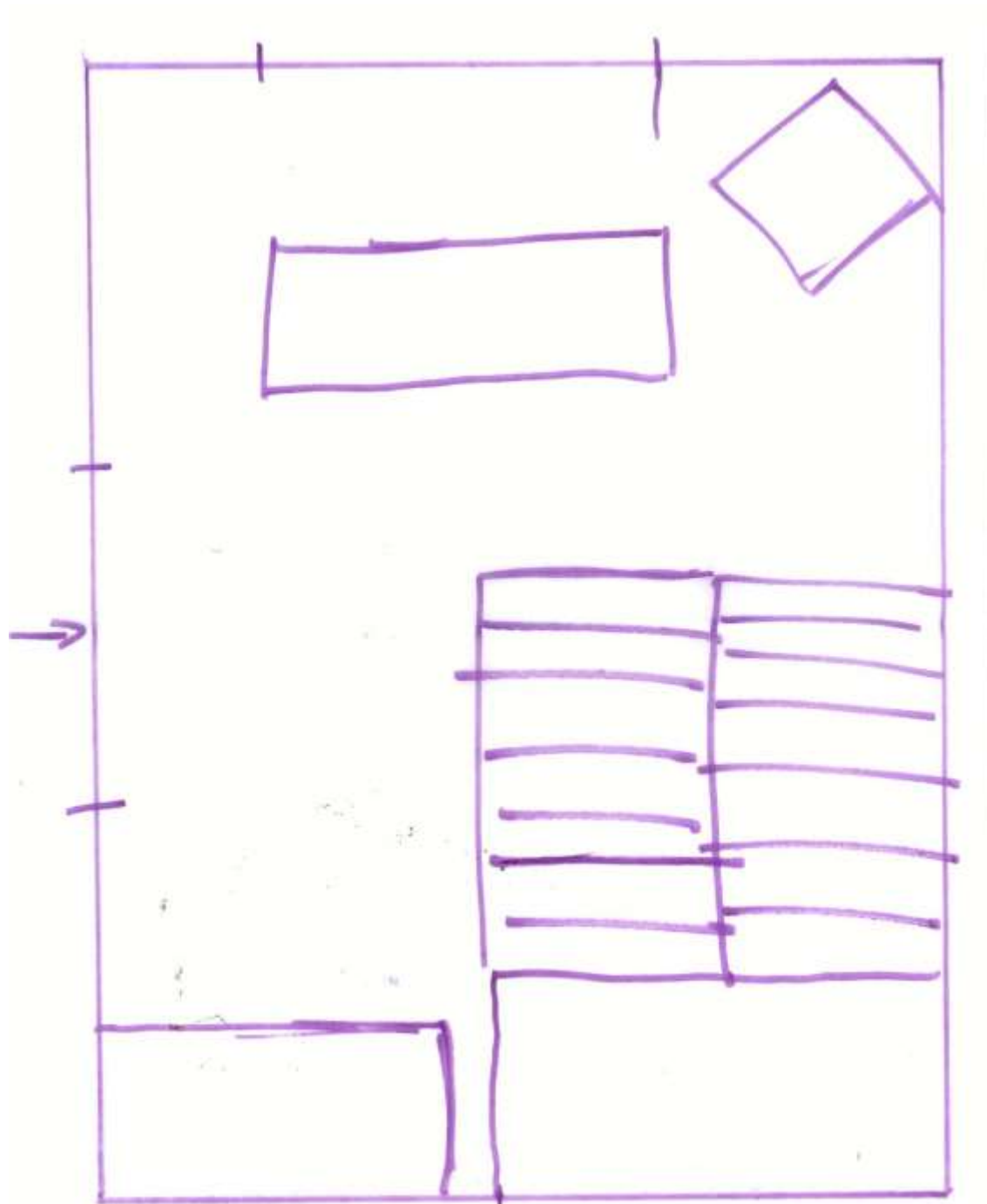
# Straight Stairs



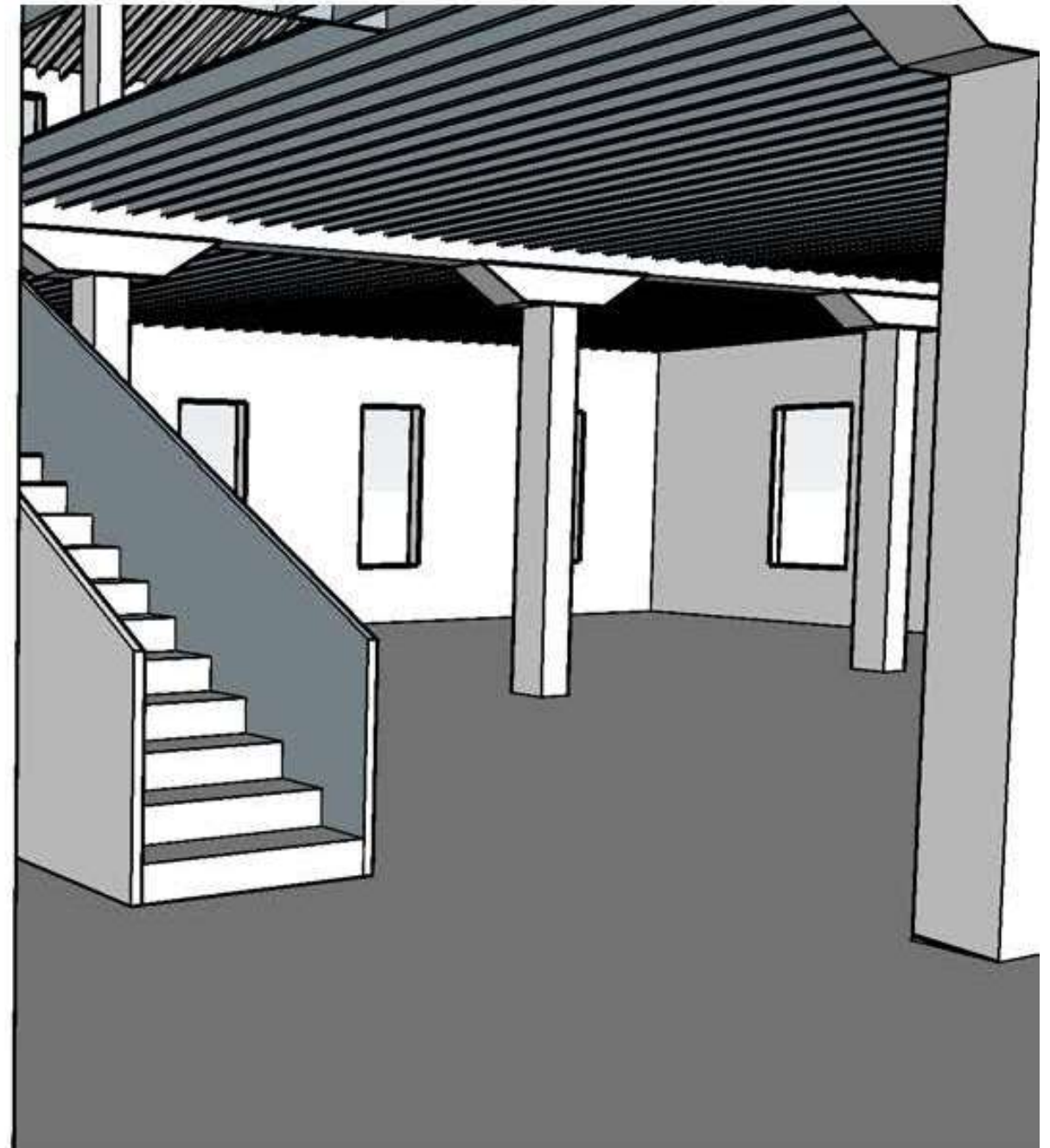
# L Stairs



# Scissor Stairs



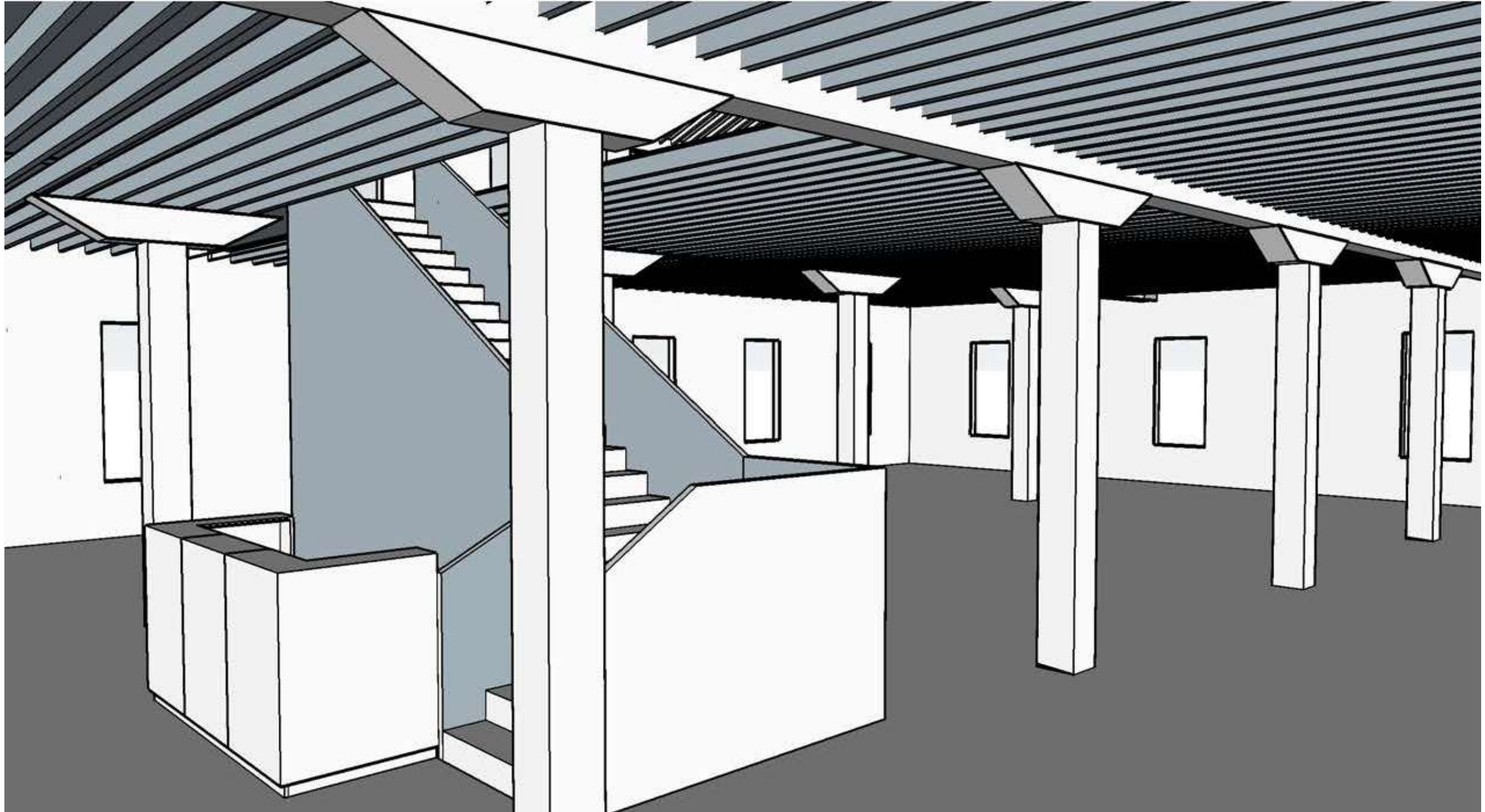
# Straight Stairs



## Straight Stairs

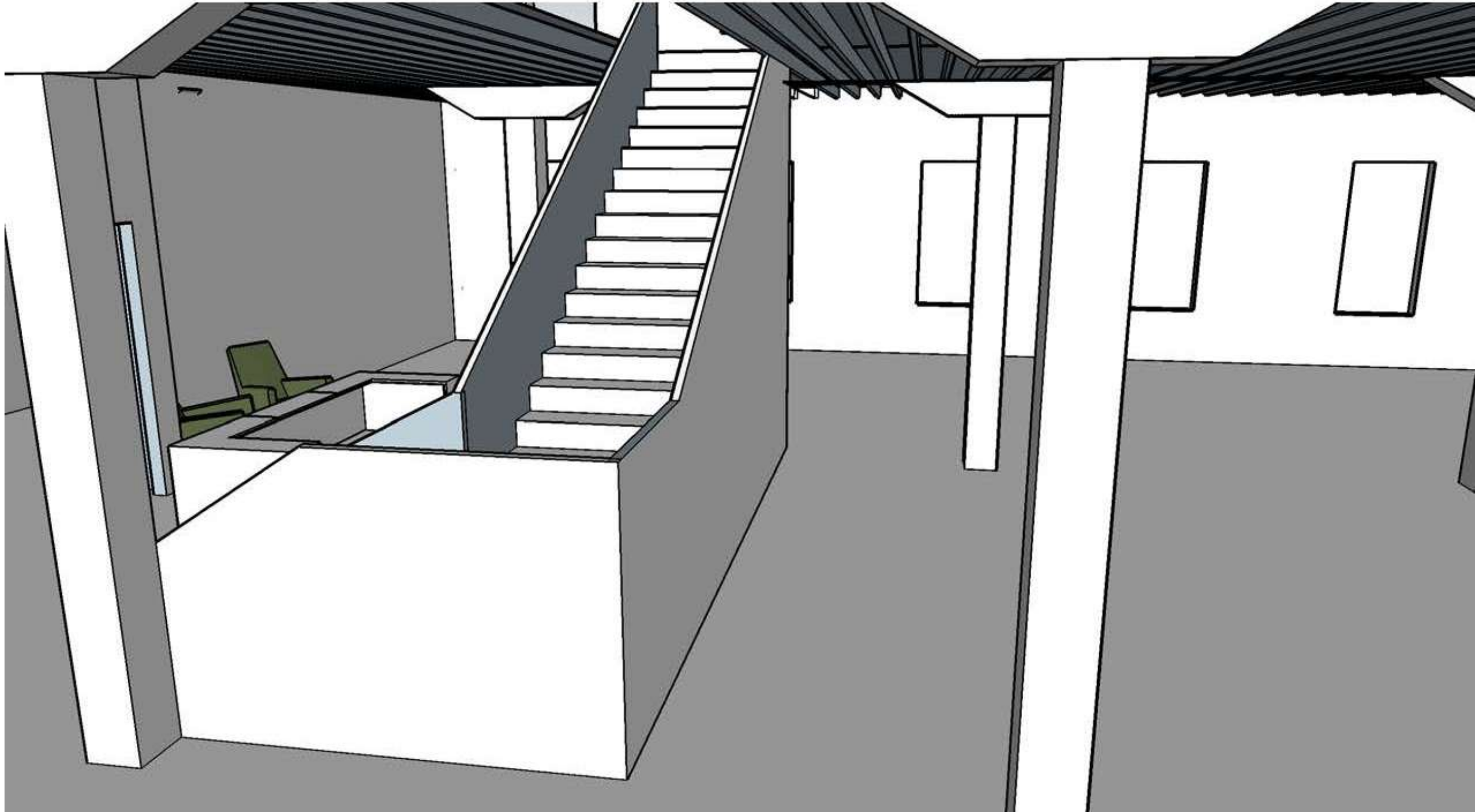


## L Stairs





## L Stairs



# Scissor Stairs



## Scissor Stairs

