

# **Portfolio 1**

**Samantha Bridges**



## Client Profile

The Gateway Center is a resource center for exploring the design history of the coastal south. Located in Greenville NC, the Center is a partnership between the North Carolina Department of Natural and Cultural Resources and East Carolina University's Department of History, with major funding from the Golden LEAF Foundation.

This state-of-the-art facility allows visitors and scholars to research the rich history of the region, as evidenced by the implements and furnishings used by residents. Research published and programs conducted by the Center paint a detailed portrait of everyday life in the area

The Center includes:

- Visitor reception area
- Exhibition space
- Meeting rooms with full audio/video capabilities
- Facilities for researchers
- Documentation workroom



# Program Spreadsheet

## Gateway Center

### PERSONNEL

Position	Personnel Totals		Unit Square Ft.		Extended Sq. Feet	Equipment			Notes
	Current	Future	Office	Workstation		PC	Printer	Fax	
					0				
Director	0	1	120		120	1	1		
					0				
Administrative Assistant	0	1		100	100	1	1		Locate directly outside Dir office
					0				
Receptionist	0	1		0	0	1	1		Included in Reception/Waiting
					0				
Visiting Fellows	0	8		48	384	8			Locate away from Entry; 1 Shared printer
					0				
Guest Research Stations	0	70		36	2520				May be split up; 1 Shared printer
					0				
Technicians	0	2	100		200	4	2		Locate near Workroom
					0				
Barista	0	1			0				Included in Pantry
					0				
<b>Personnel Totals:</b>	<b>0</b>	<b>84</b>			<b>3324</b>	<b>15</b>	<b>5</b>	<b>0</b>	

#### Department Summary

##### Information:

Personnel	3324 Square Ft.
Support	2360 Square Ft.
<b>Sub Total:</b>	<b>5684 Square Ft.</b>
Circulation	1.54
<b>Total Carpetable:</b>	<b>8753.36 Square Ft.</b>

#### Interviewee:

Interview Date: \_\_\_\_\_  
 Revision Submitted: \_\_\_\_\_  
 Sign Off: \_\_\_\_\_

### SUPPORT SPACES

Space	Support/Equipment		Unit Square Feet		Extended Sq. Feet	Location	Notes
	Current	Future					
					0		
Reception/Waiting Area	0	1		300	300	Inside main entry; Visible from Admin Asst	Seating for 4 guests
					0		
Large Conference Room	0	1		400	400	Close to main entry	Seating for 14 at table, 6 at side; Full A/V
					0		
Small Conference Room	0	3		120	360	Adjacent to Large Conference	Seating for 4-6; Full A/V
					0		
Workroom	0	1		360	360	Locate away from Entry	Counter space and work tables
					0		
Storage	0	1		100	100	May be split and scattered through the space	
					0		
Pantry	0	1		240	240		
					0		
Exhibition Space	0	1		600	600	Close to main entry	Some walls for hanging work
<b>Support Totals:</b>					<b>2360</b>		

#### Department Notes:

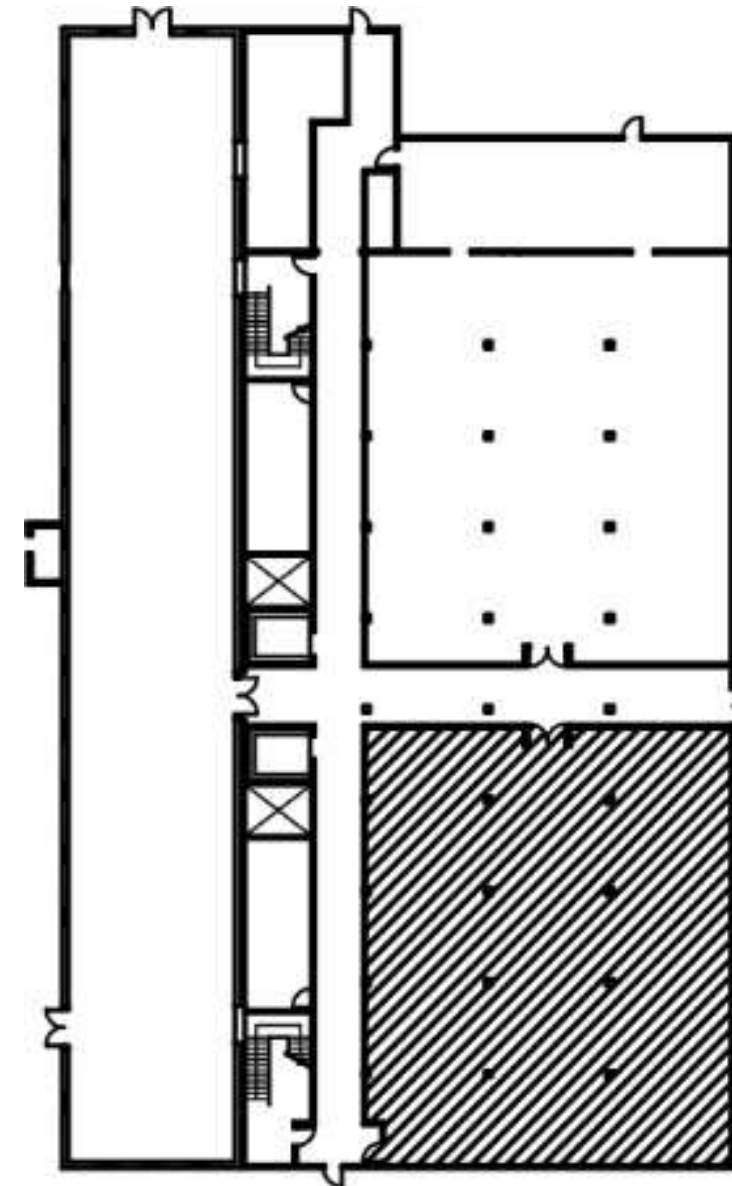
Historic character important to users  
 Space must be flexible

## Site Profile

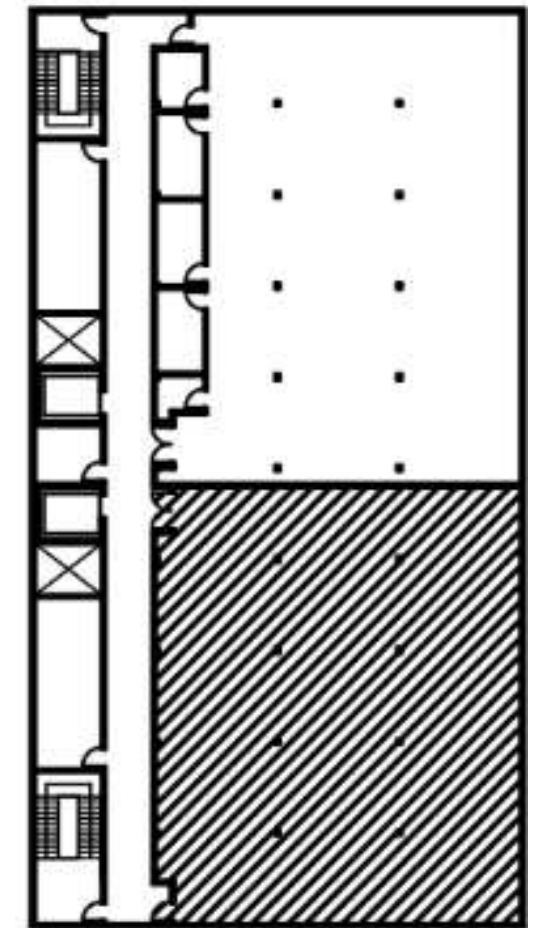
- Pritchard-Hughes Tobacco Building  
Pitt and 11<sup>th</sup> Streets  
Greenville NC
- Erected: first quarter of the Twentieth Century
- Heavy timber construction
- Client to occupy tenant space on first and second floors



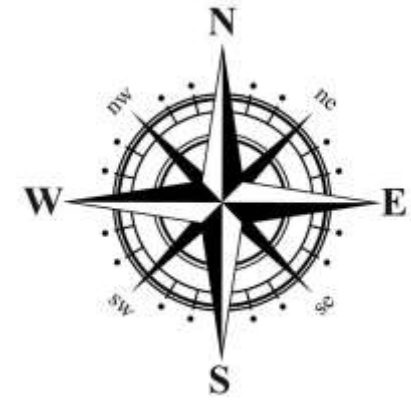
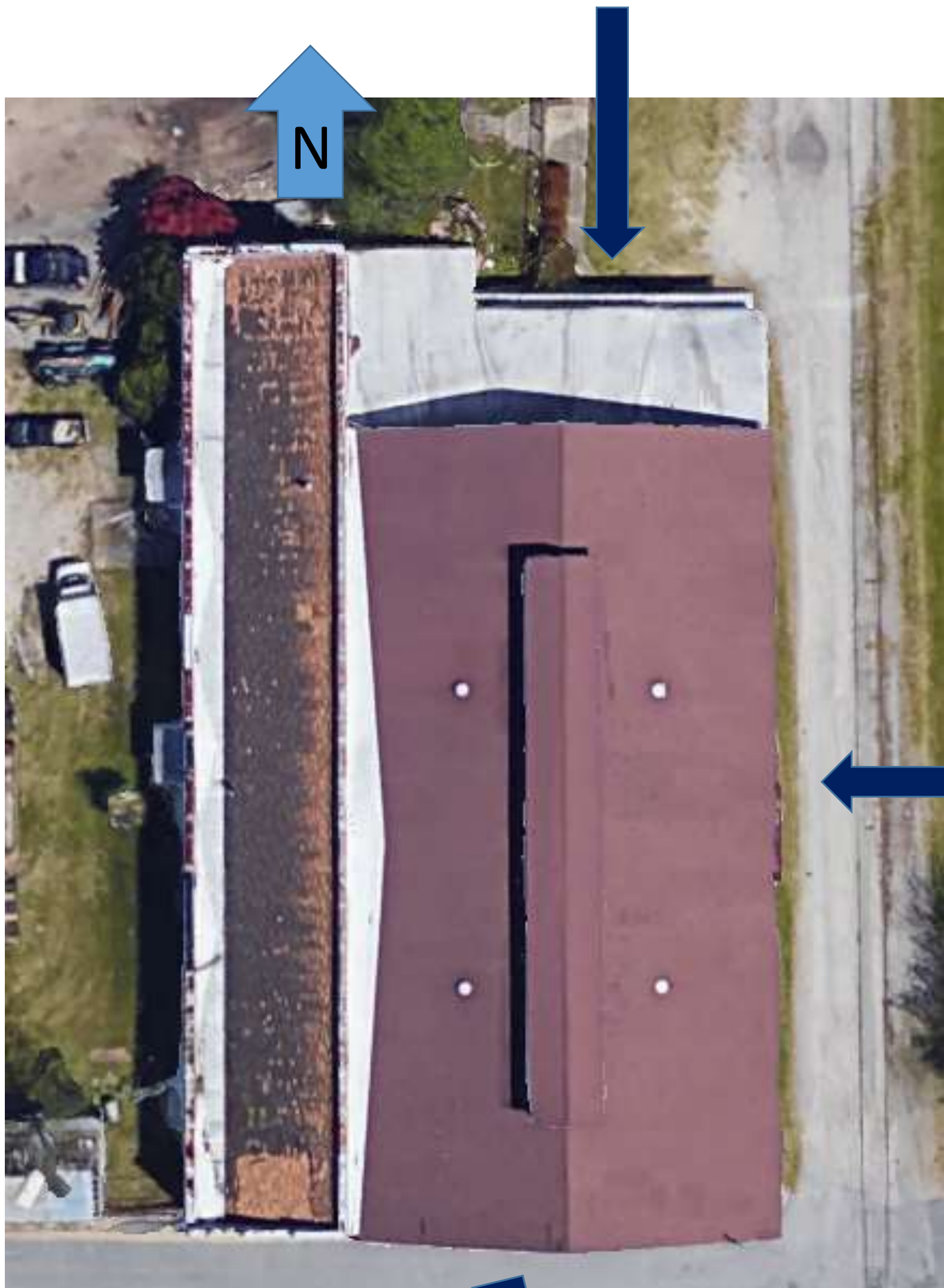
Building Exterior



1st Floor Tenant Area  
4,280 Square Feet



2nd Floor Tenant Area  
4,280 Square Feet



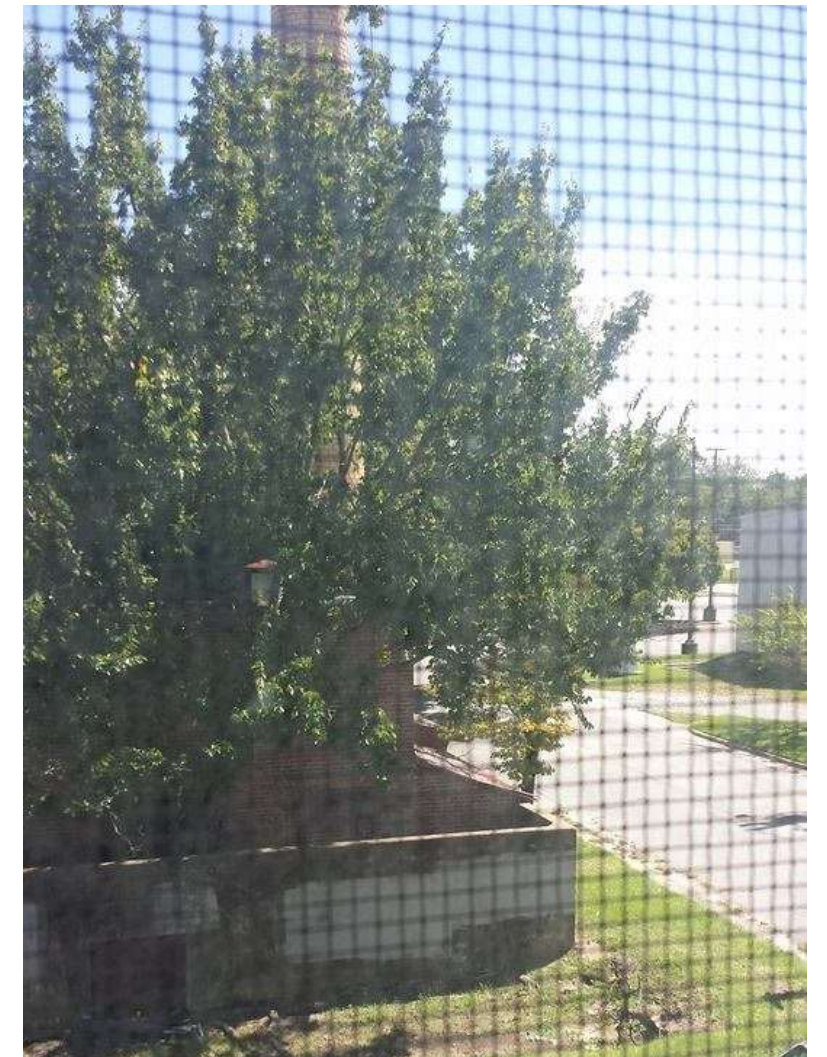
**Site Analysis**

North: Direct sunlight

East: Morning light

South: No direct sunlight

West: Afternoon light



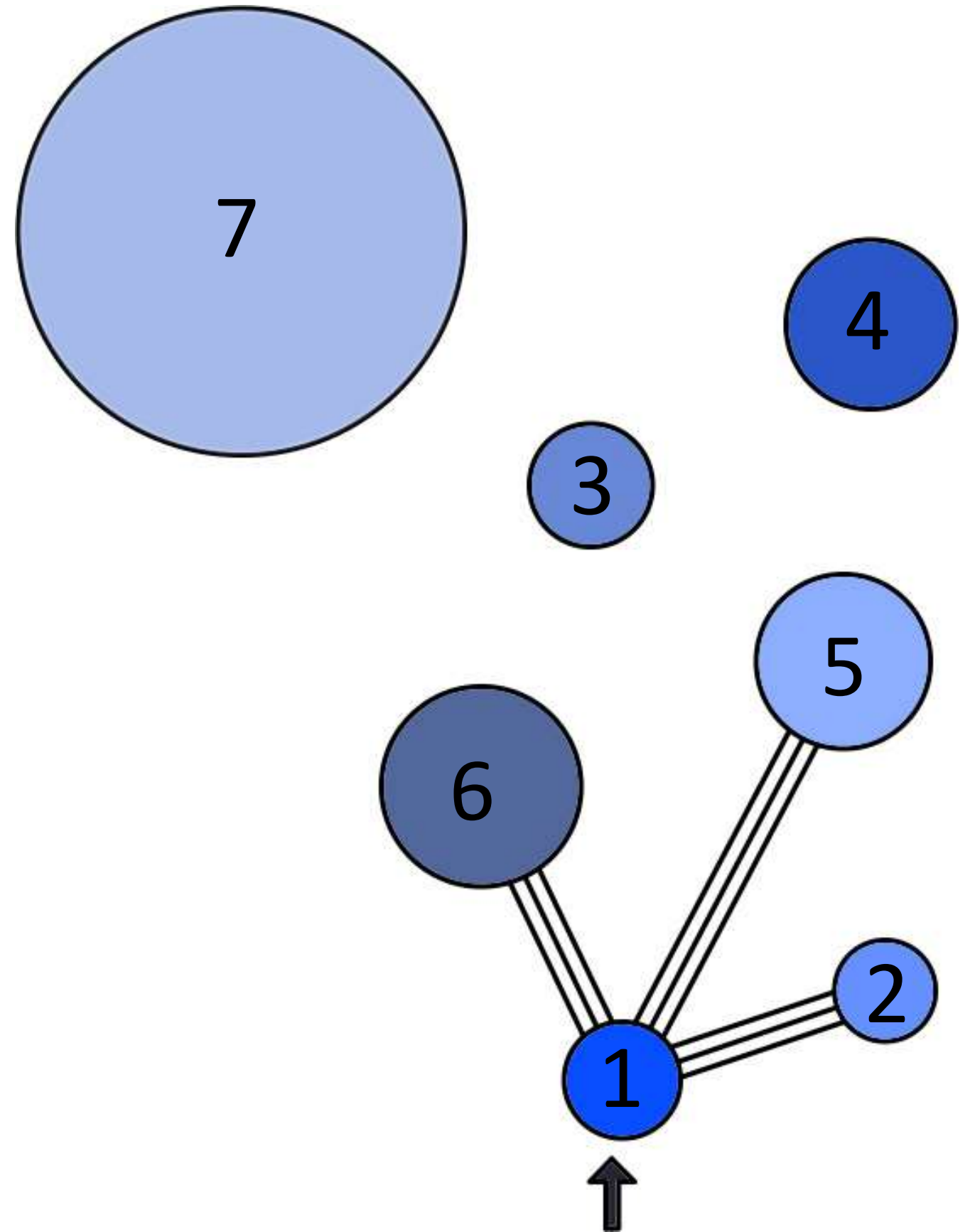
## **Building: History and Existing Conditions**

- Prichard-Hughes warehouse was built in 1905
- In 1923 the frame warehouse was enlarged, adding a small one-story frame office to the north façade and a narrow flat-roofed brick prize house with segmental-arched windows and stepped parapets on the north and south ends to the west façade.
- Hughes installed two large interior metal fire doors to separate the brick and frame structures, making it a tobacco storage warehouse.
- Until 1935 the building was used for processing and storage by the W. C. Thomas Tobacco Company and for storage alone by the Greenville storage and inspection Company until 1948
- The Bostic Suggs Furniture company purchased the building and it is used as a furniture warehouse in association with firm's sales operations in a nearby building
- Was renovated to replace windows throughout the building and installing artificial siding on the frame warehouse and office wing.
- Its functions included commerce/trade warehouse, industry processing and Industrial storage, and utilized as a Prize house
- ECU acquired the warehouse in 2003
- Millennial campus designation- an area where an institution can collaborate with private partners in education, industry, government, and military.
- Certified historic structure for purpose of rehabilitation

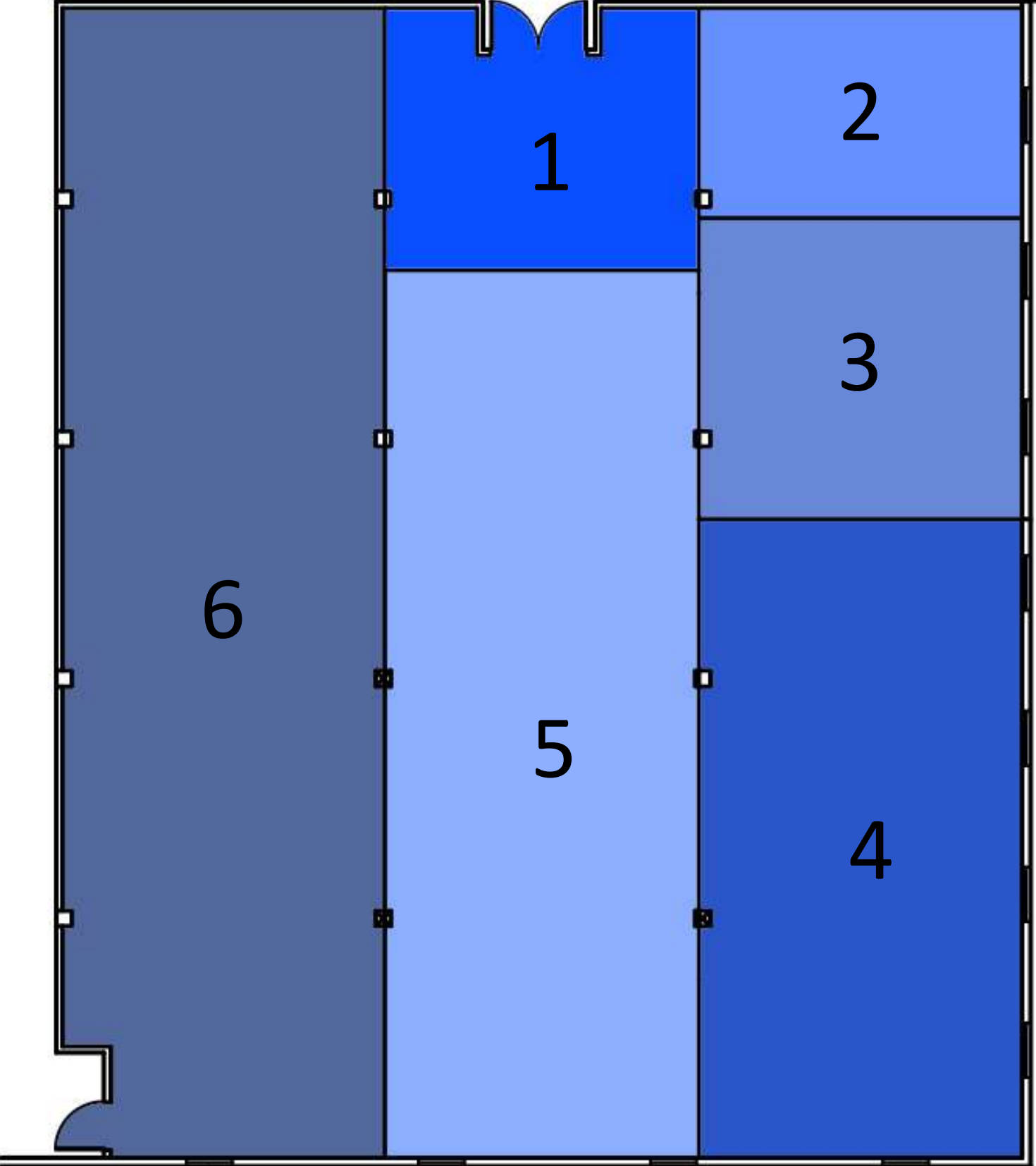
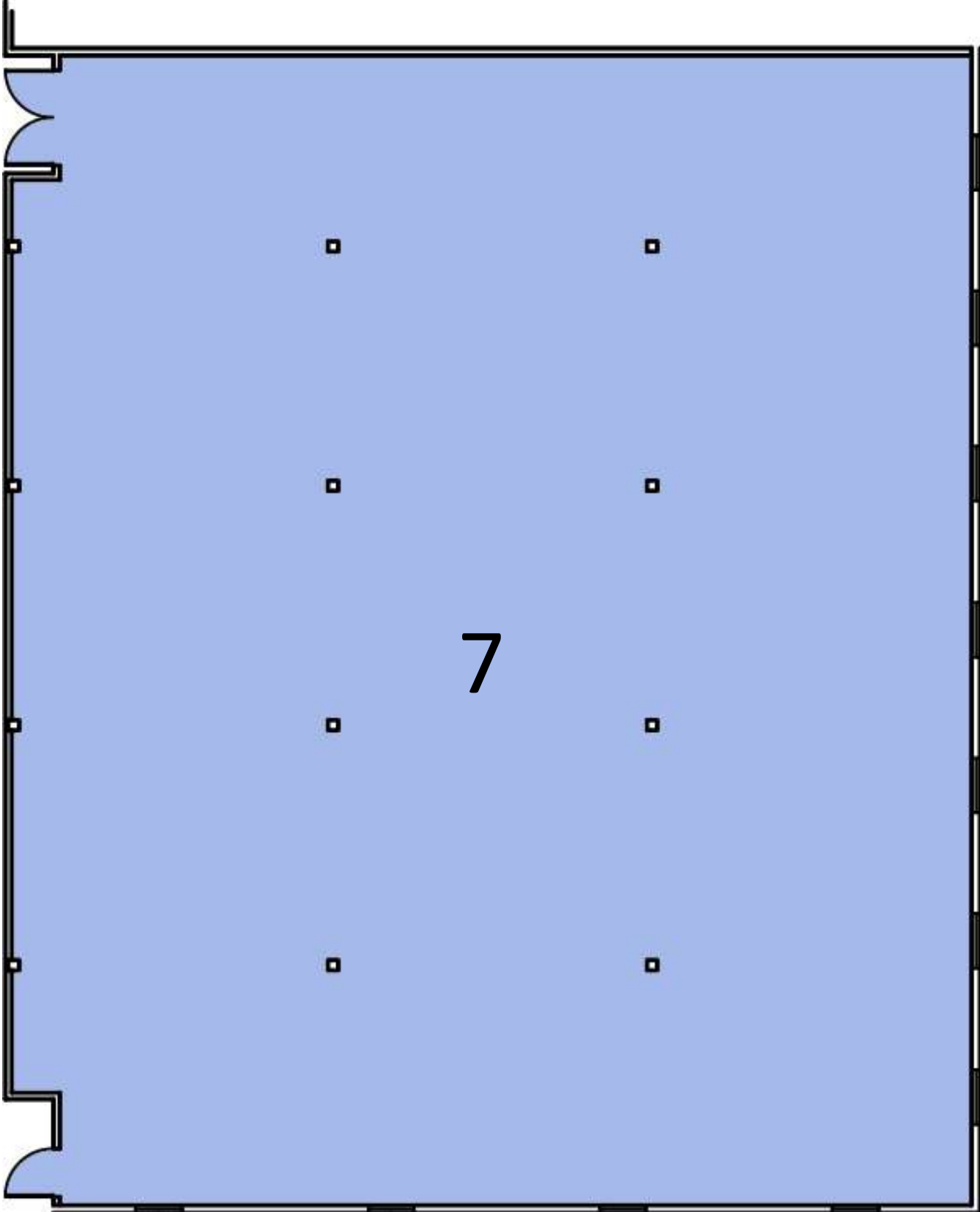


### Bubble diagrams

1. Reception = 462 sq. ft.
2. Director/admin = 338.8 sq. ft.
3. Storage + pantry = 523.6 sq. ft.
4. Technical = 862.4 sq. ft.
5. Exhibition = 924 sq. ft.
6. Conference rooms = 1170.4 sq. ft.
7. Open work area = 4472.16 sq. ft.

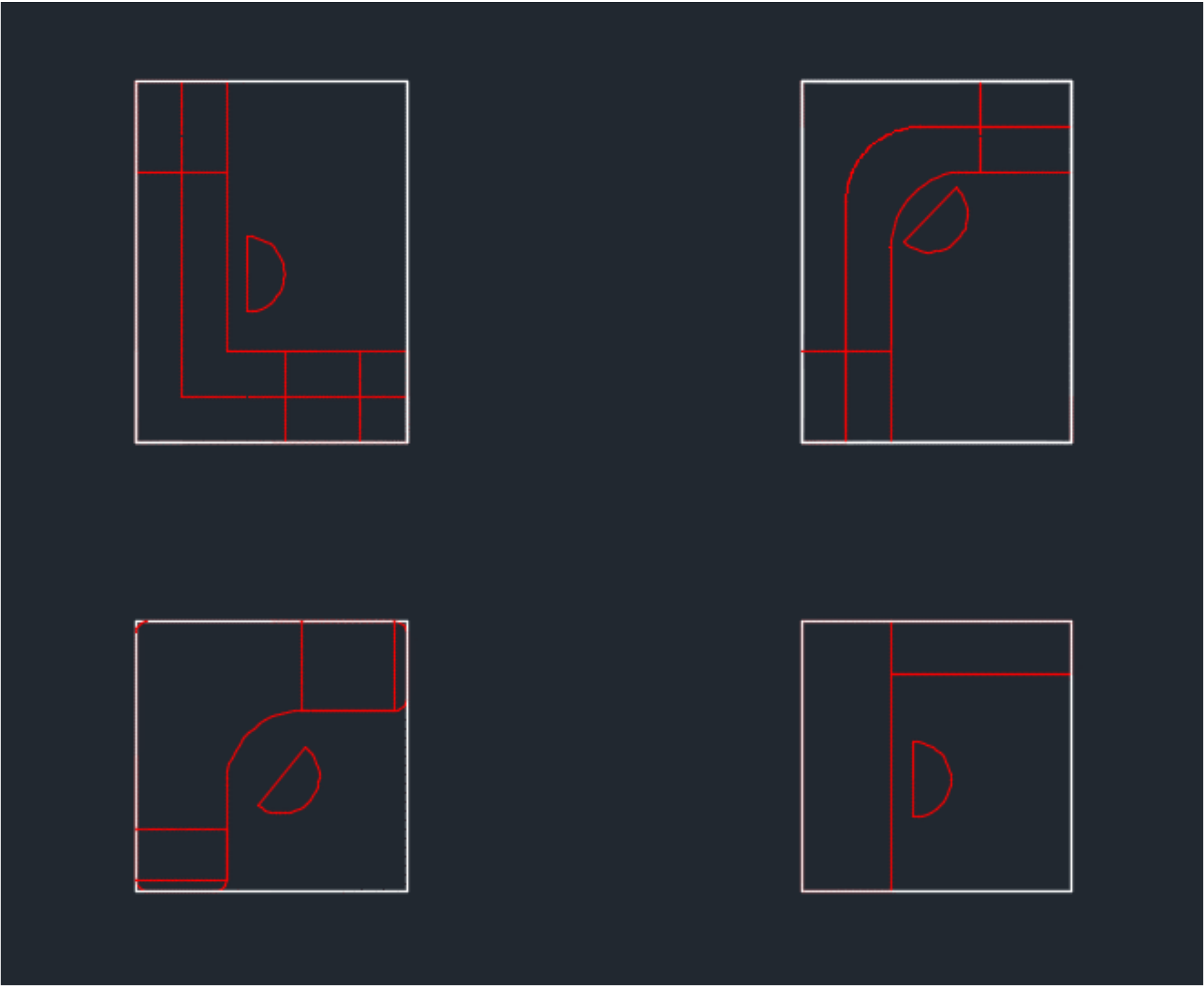
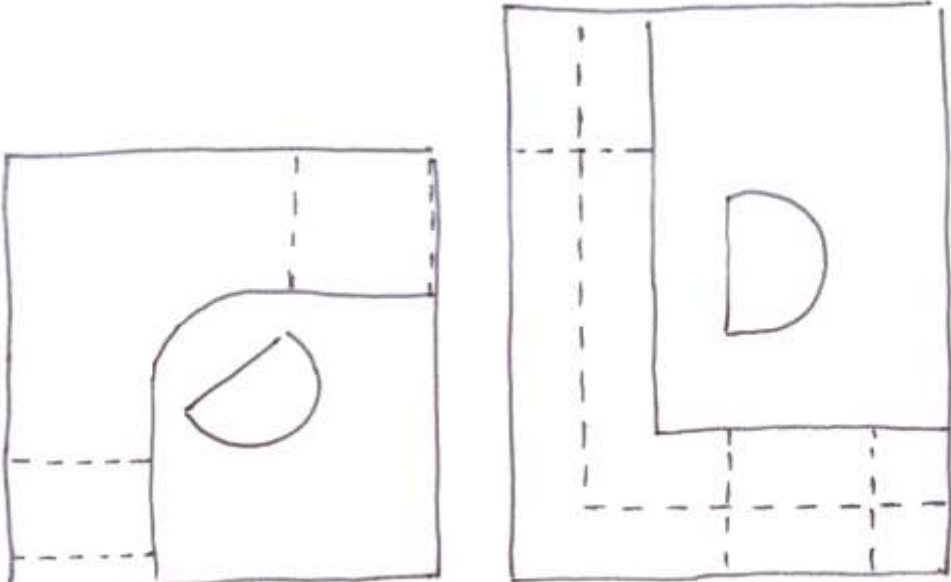
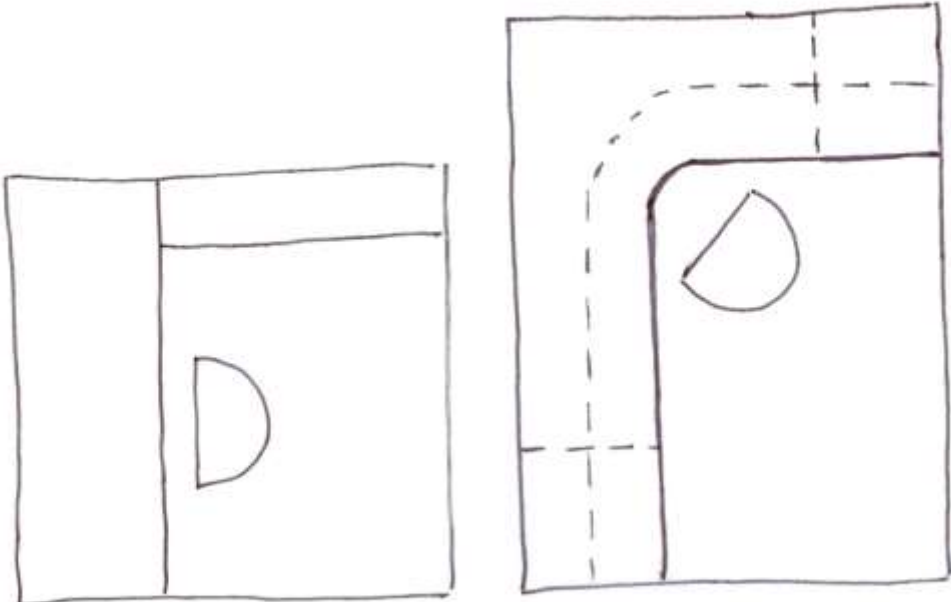


Blocking Diagram

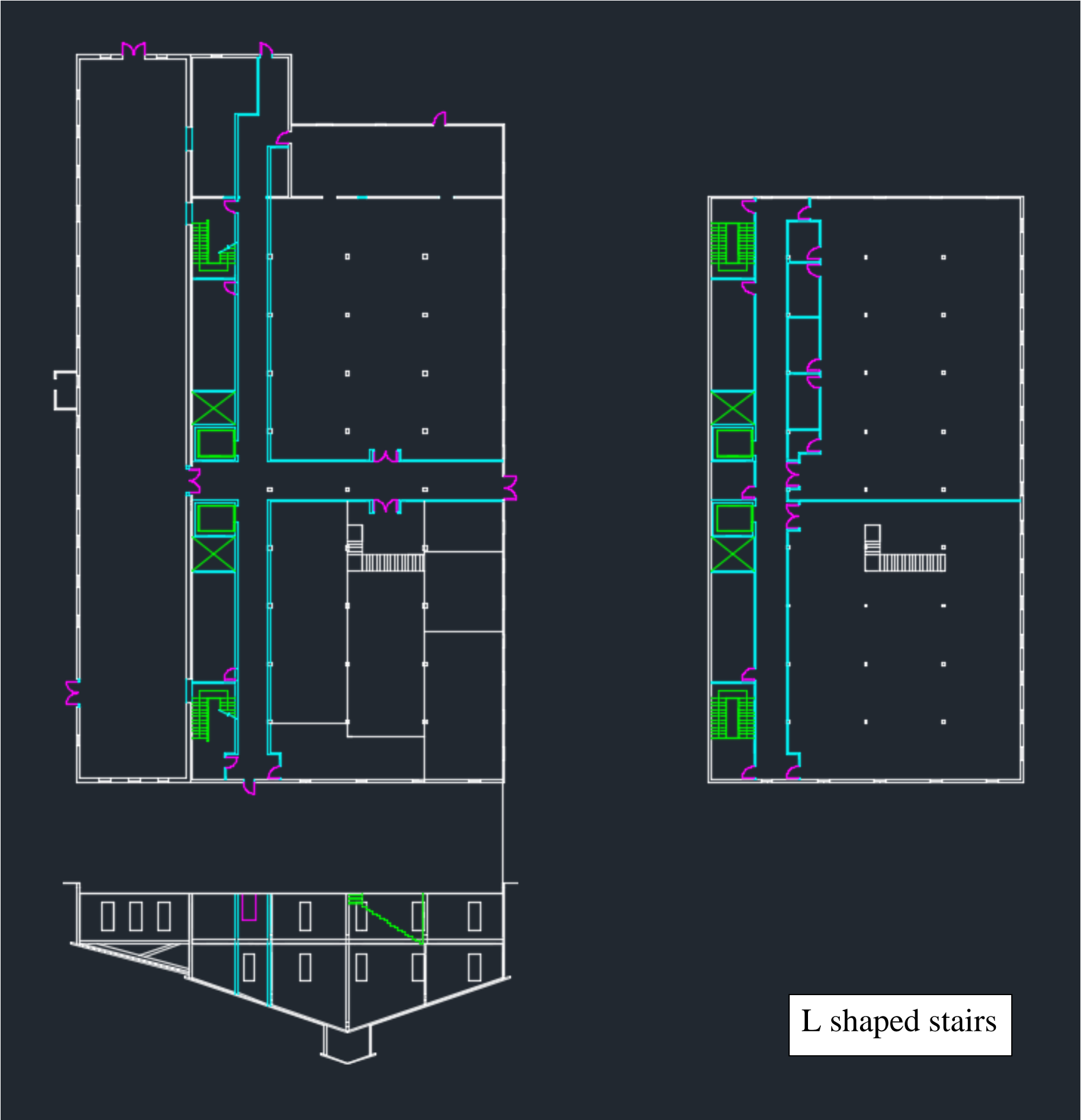
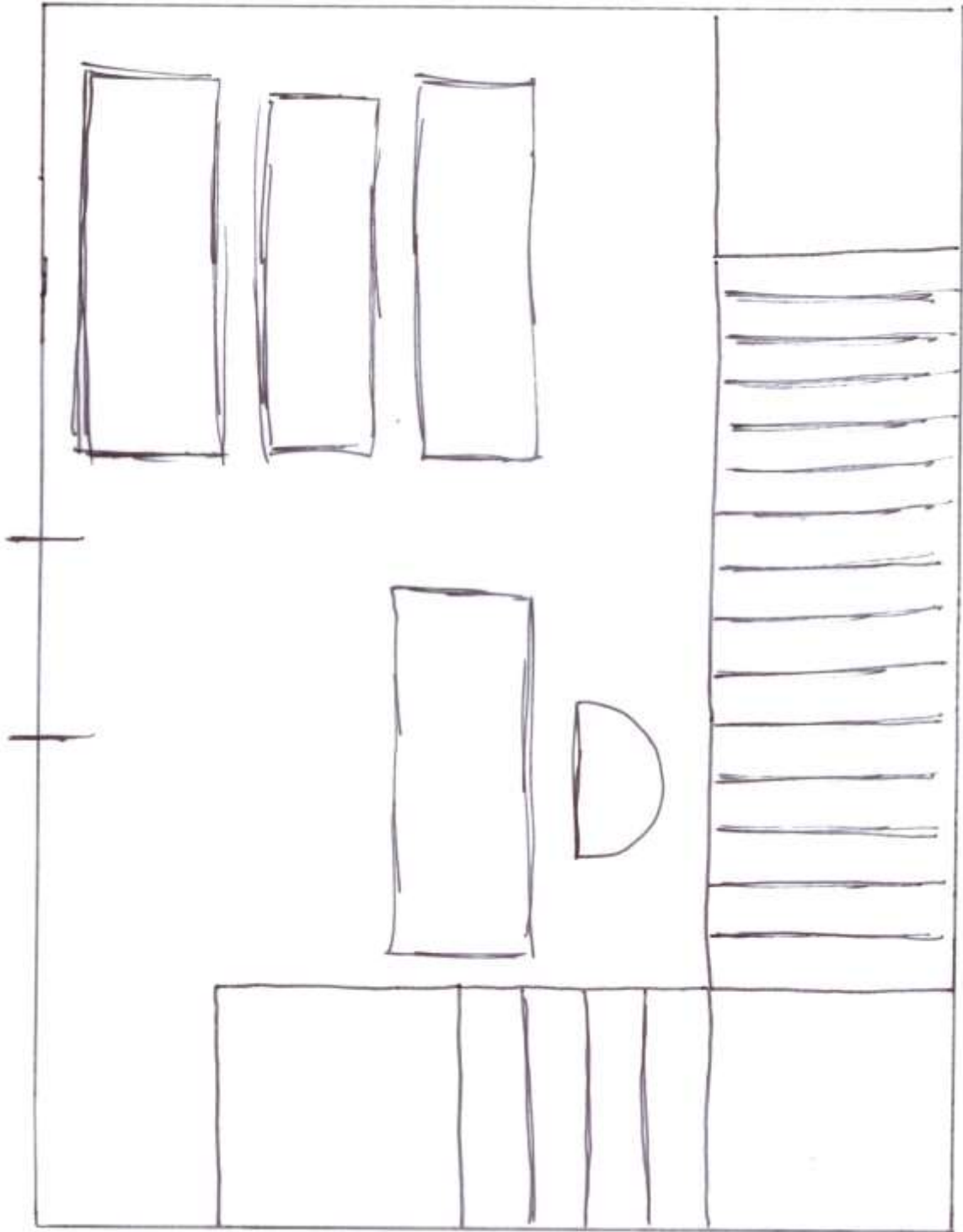




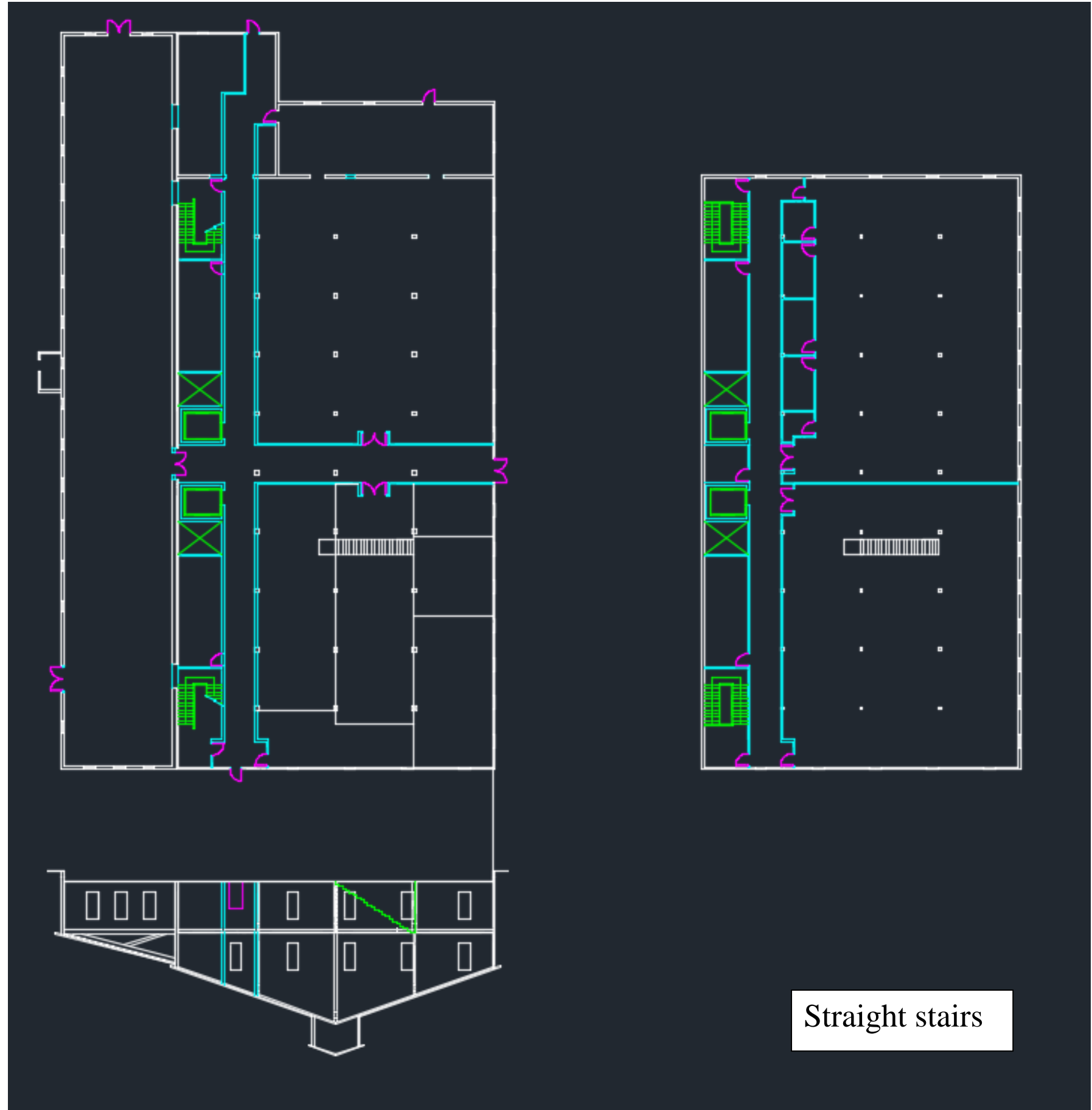
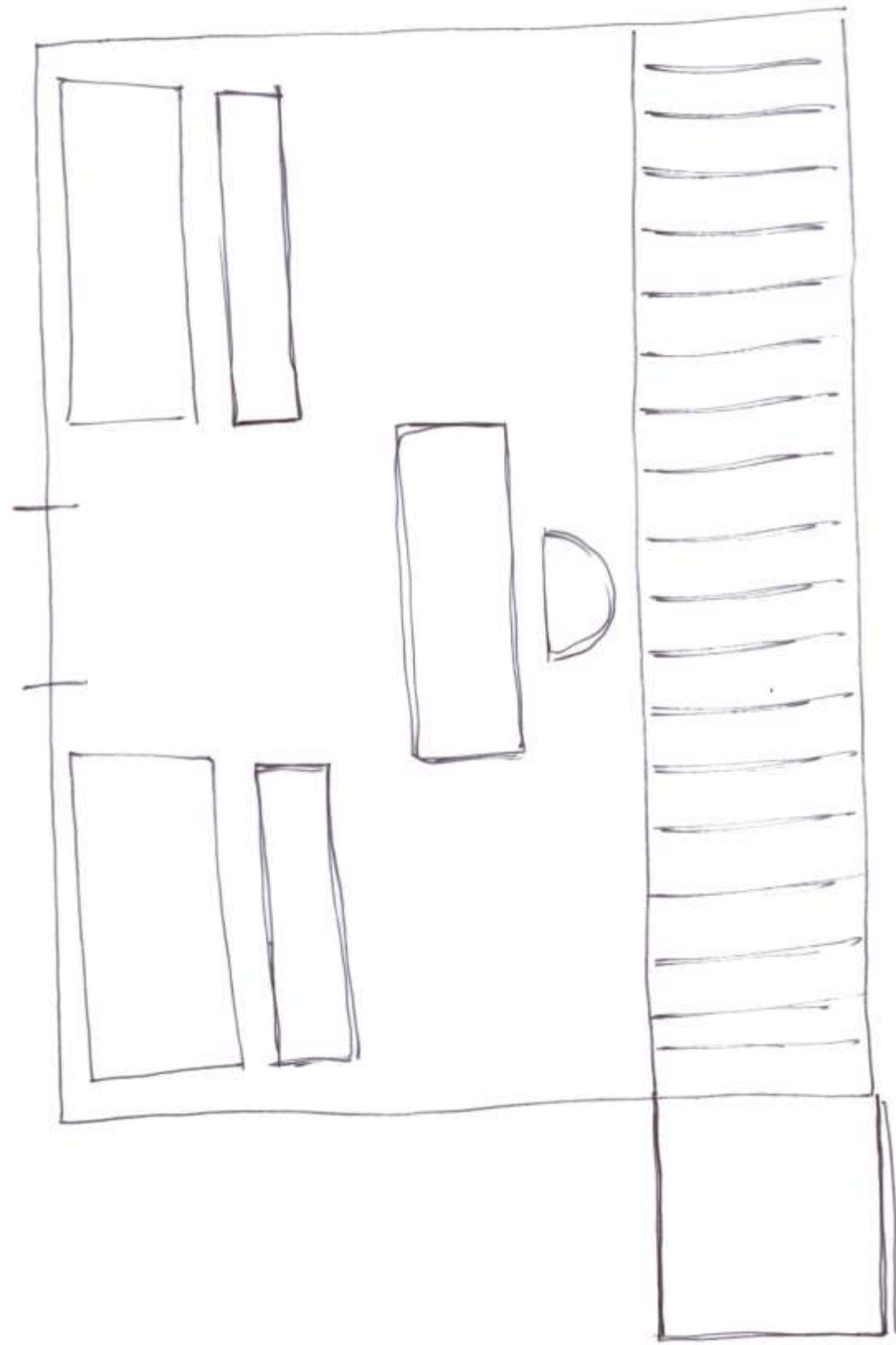
**Space Standard Drawings**



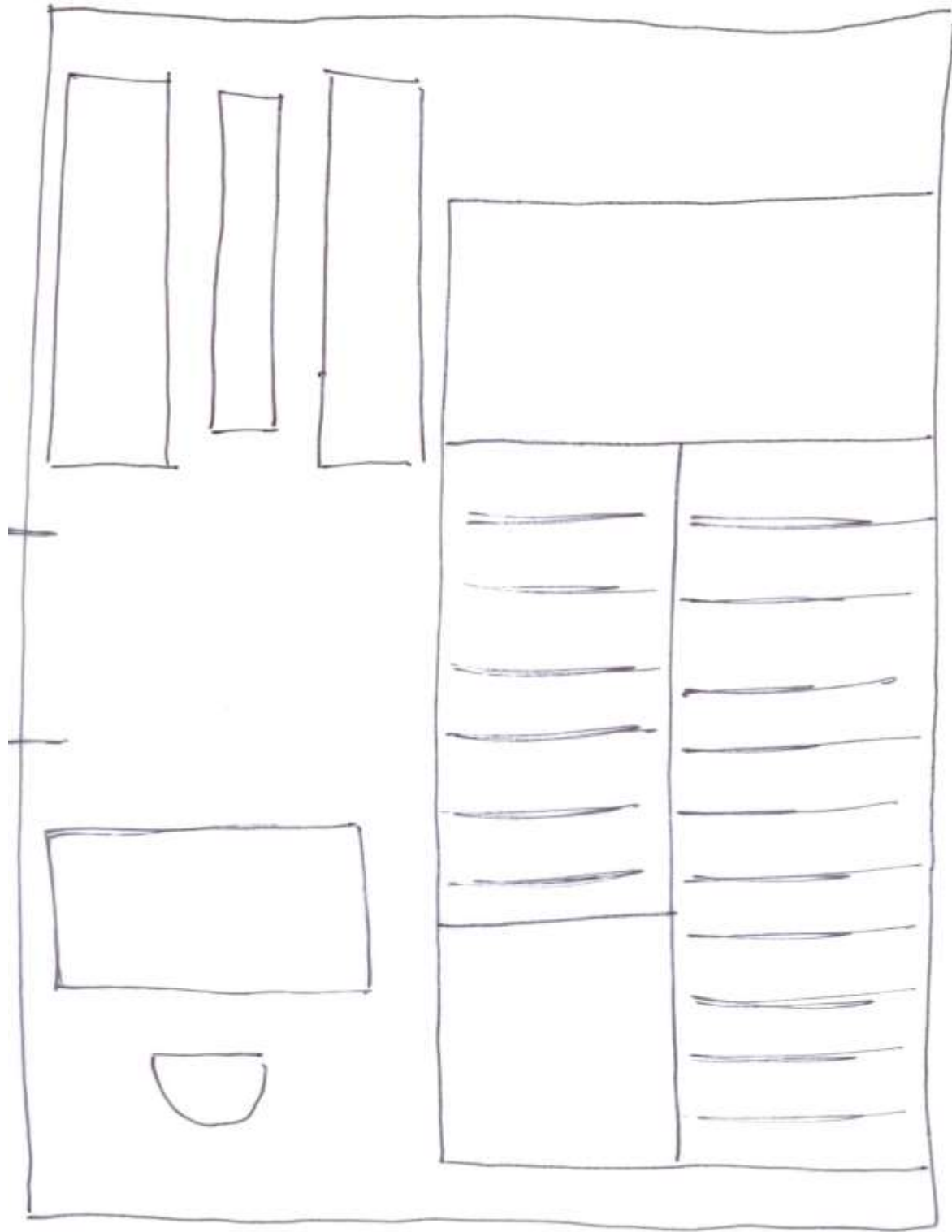
Assignment 3



L shaped stairs



Straight stairs



Scissor stairs

Assignment 4



L Stair view 1



L Stair view 2

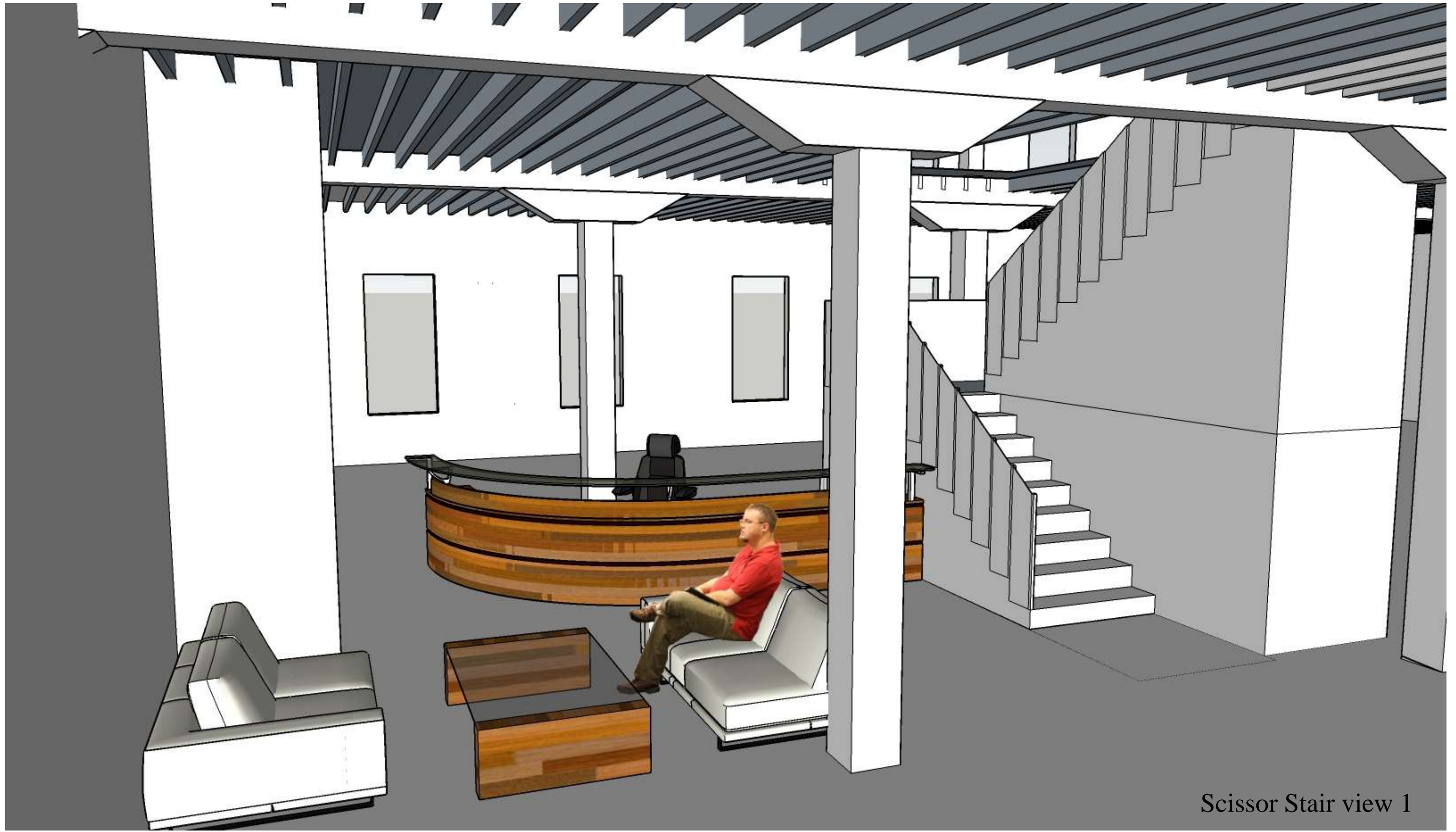


Straight Stair view 1

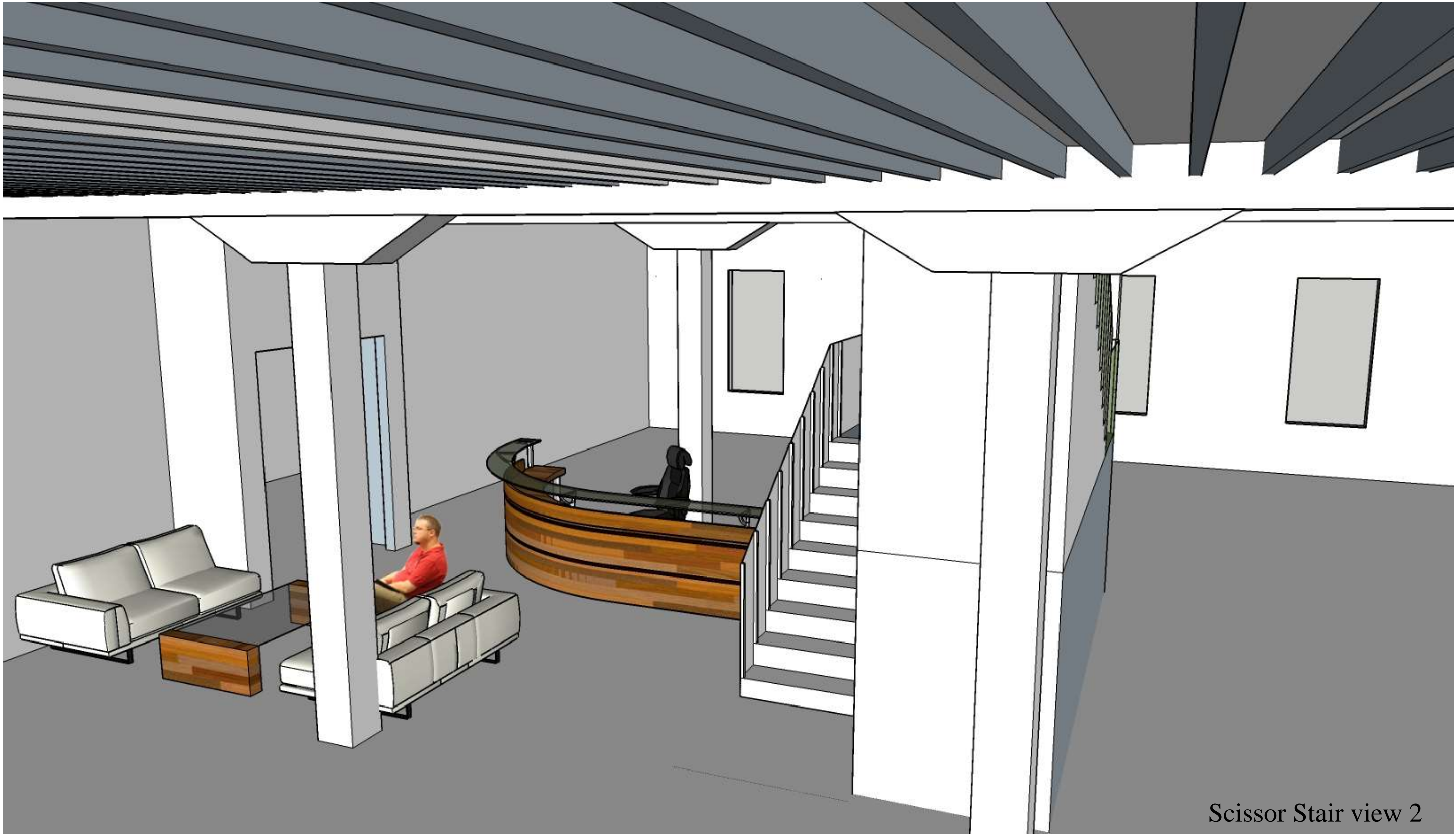


Straight Stair view 2





Scissor Stair view 1



Scissor Stair view 2