

Portfolio One

Carly Brow

IDSN 2102

Client Profile

The Gateway Center is a resource center for exploring the design history of the coastal south. Located in Greenville NC, the Center is a partnership between the North Carolina Department of Natural and Cultural Resources and East Carolina University's Department of History, with major funding from the Golden LEAF Foundation.

This state-of-the-art facility allows visitors and scholars to research the rich history of the region, as evidenced by the implements and furnishings used by residents. Research published and programs conducted by the Center paint a detailed portrait of everyday life in the area

The Center includes:

- Visitor reception area
- Exhibition space
- Meeting rooms with full audio/video capabilities
- Facilities for researchers
- Documentation workroom

Carly Brow

Portfolio 1

IDSN 2102

Charles Gustina

Gateway Center

PERSONNEL

Position	Personnel Totals		Unit Square Ft.		Extended	Equipment		Notes
					0			
Director	0	1	120		120	1	1	
					0			
Administrative Assistant	0	1		100	100	1	1	Locate directly outside Dir office
					0			
Receptionist	0	1		0	0	1	1	Included in Reception/Waiting
					0			
Visiting Fellows	0	8		48	384	8		Locate away from Entry; 1 Shared printer
					0			
Guest Research Stations	0	70		36	2520			May be split up; 1 Shared printer
					0			
Technicians	0	2	100		200	4	2	Locate near Workroom
					0			
Barista	0	1			0			Included in Pantry
					0			
Personnel Totals:	Personnel Tot	Personnel Tot	Personnel Tot	Personnel Tot	Personnel Tot	Personnel Tot	Personnel Tot	Personnel Totals:

Department Summary

Information:

Personnel	Personn Square Ft.
Support	2360 Square Ft.
Sub Total:	2360 Square Ft.
Circulation	1.54
Total Carpetable:	3634.4 Square Ft.

Interviewee:

Interview Date:

Revision Submitted:

Sign Off: _____

SUPPORT SPACES

Space	Support/Equipment		Unit Square Feet	Extended Sq. Feet	Location	Notes
	0	0				
				0		
Reception/Waiting Area	0	1	300	300	Inside main entry; Visible from Admin Asst	Seating for 4 guests
				0		
Large Conference Room	0	1	400	400	Close to main entry	Seating for 14 at table, 6 at side; Full A/V
				0		
Small Conference Room	0	3	120	360	Adjacent to Large Conference	Seating for 4-6; Full A/V
				0		
Workroom	0	1	360	360	Locate away from Entry	Counter space and work tables
				0		
Storage	0	1	100	100	May be split and scattered through the space	
				0		
Pantry	0	1	240	240		
				0		
Exhibition Space	0	1	600	600	Close to main entry	Some walls for hanging work
Support Totals:				2360		

Department Notes:

Historic character important to users
Space must be flexible

Carly Brow

Portfolio 1

IDSN 2102

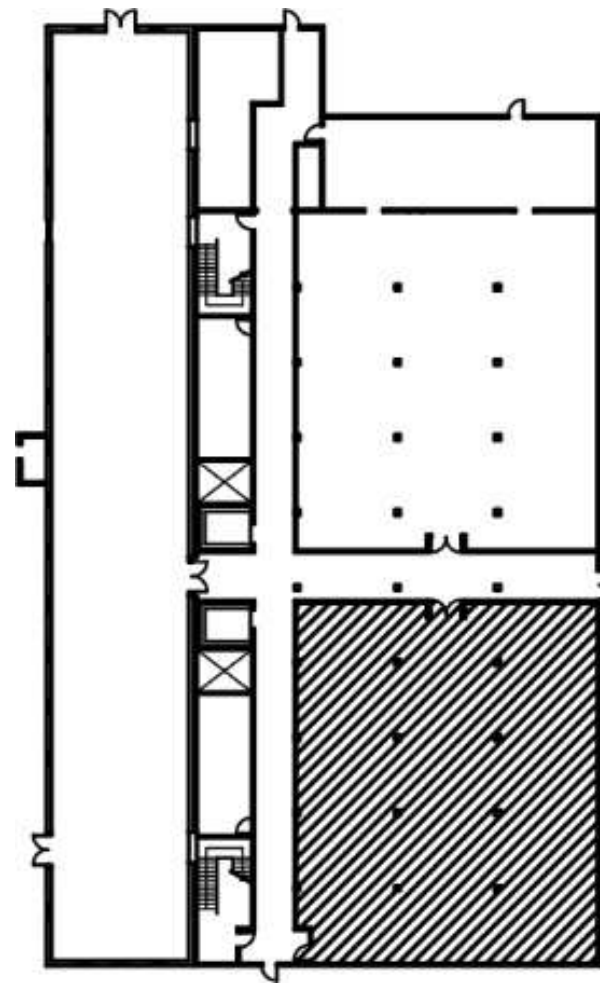
Charles Gustina

Site Profile

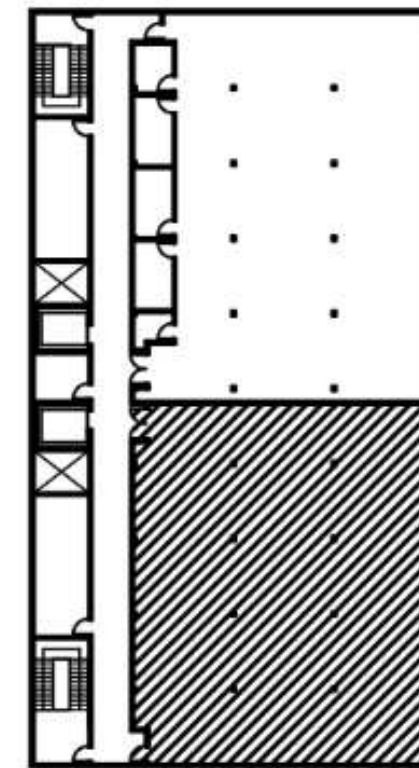
- Pritchard-Hughes Tobacco Building
Pitt and 11th Streets
Greenville NC
- Erected: first quarter of the Twentieth Century
- Heavy timber construction
- Client to occupy tenant space on first and second floors



Building Exterior



1st Floor Tenant Area
4,280 Square Feet



2nd Floor Tenant Area
4,280 Square Feet

Carly Brow
Portfolio 1
IDSN 2102
Charles Gustina

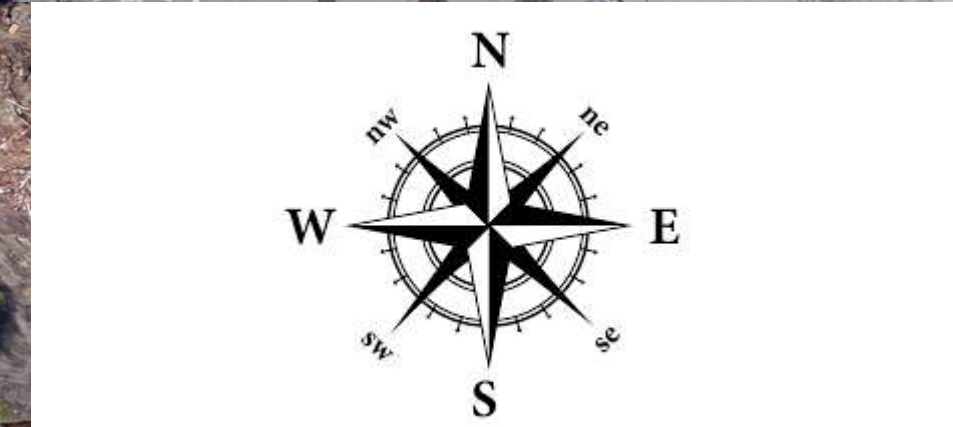
Site analysis



The way the day light will affect the interior on the left side, which is where my director's office, pantry, storage and tech rooms are located, will be that these spaces will have the best lighting in the morning as the sun is rising in the east. On the right side of my building where my large and small conference rooms are located will have the best natural light in the afternoon as the sun is setting.

Carly Brow
Portfolio 1
IDSN 2102
Charles Gustina

Site Analysis



Carly Brow
Portfolio 1
IDSN 2102
Charles Gustina

Bienenstock Furniture Library

- Located in High Point, North Carolina
- Relates to the tobacco warehouse by having designated sections for
 - study areas
 - rare book room
 - media room
- Holds seminars, classes, events, meetings, networking and design retreats
- More than 5,000 furniture and design volumes
- Largest furniture library in the world
- Publishes from as far back as 1640
- Has original publishes of Chippendale, Sheraton and Hepplewhite
- May be the only place in the world scholars, professionals, students and the public may view these kinds of books



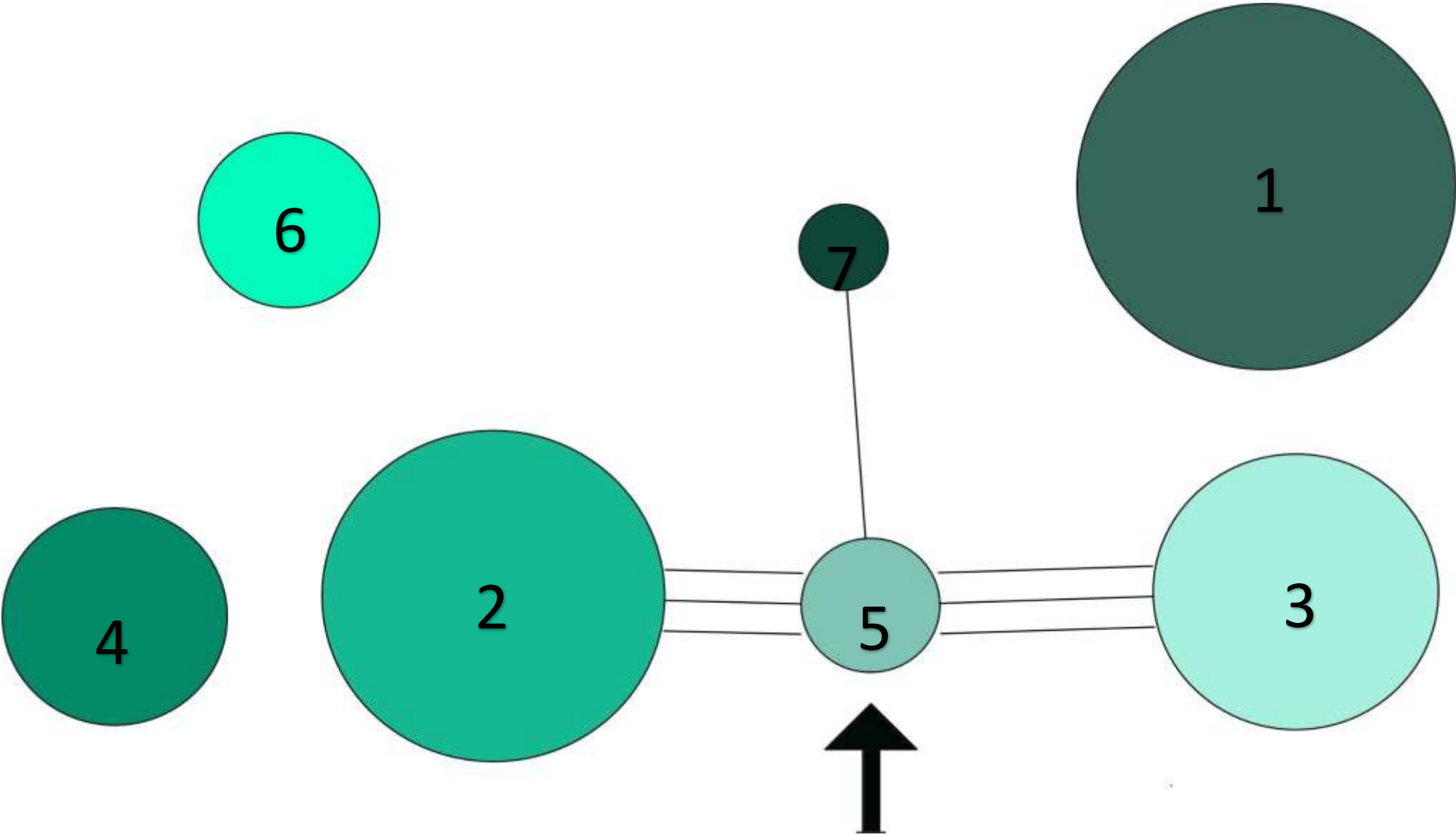
Carly Brow

Portfolio 1

IDSN 2102

Charles Gustina

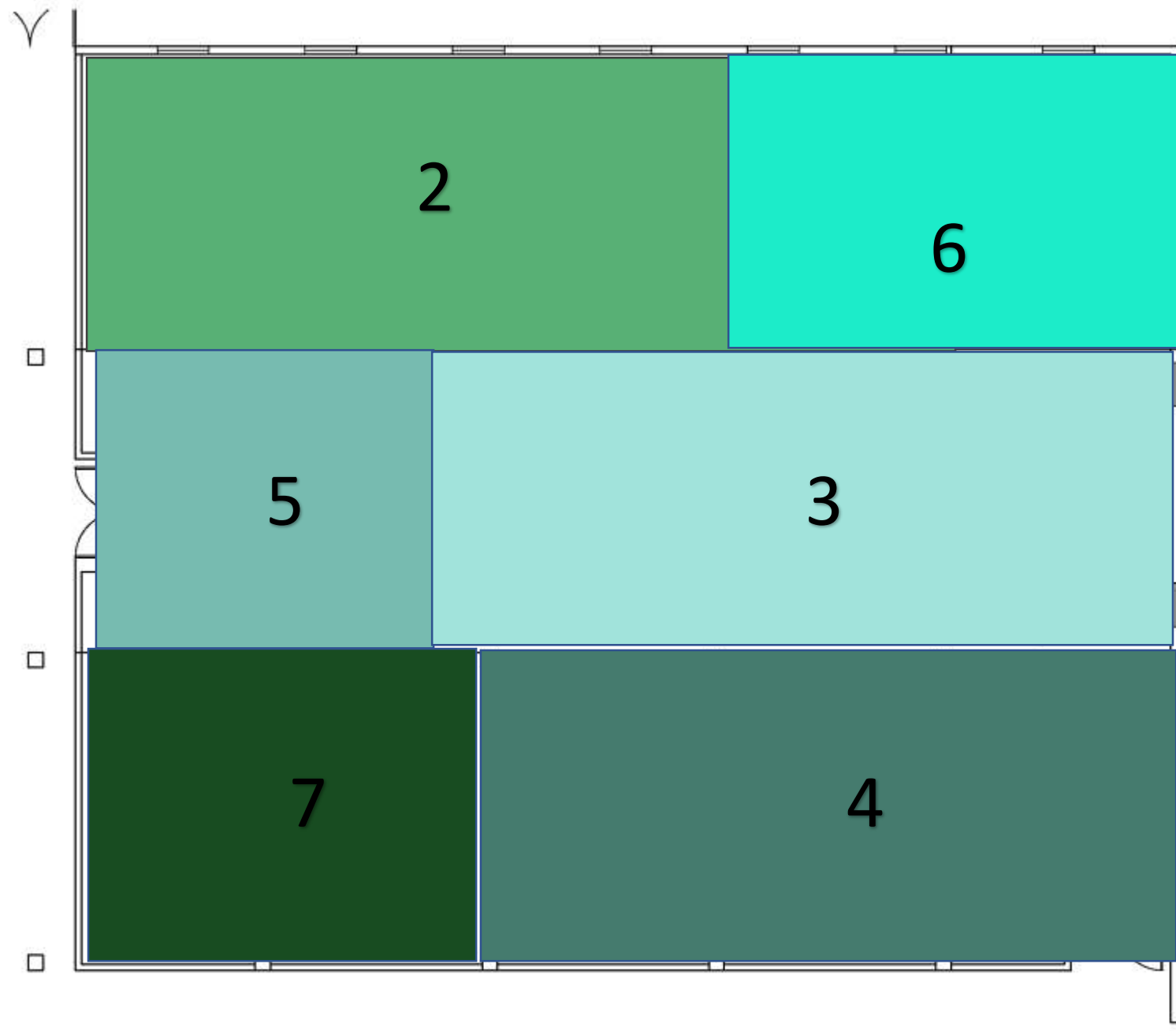
- 1-Visiting Fellows 4472.16 sq ft
- 2-Large and Small Conference rooms 1170.4 sq ft
- 3-Exhibition 924 sq ft
- 4-Technicians 862.4 sq ft
- 5-Reception and waiting area 462 sq ft
- 6-Storage/pantry/barista 523.6 sq ft
- 7-Director and Assistant offices 338.8 sq ft



Carly Brow
Portfolio 1
IDSN 2102
Charles Gustina

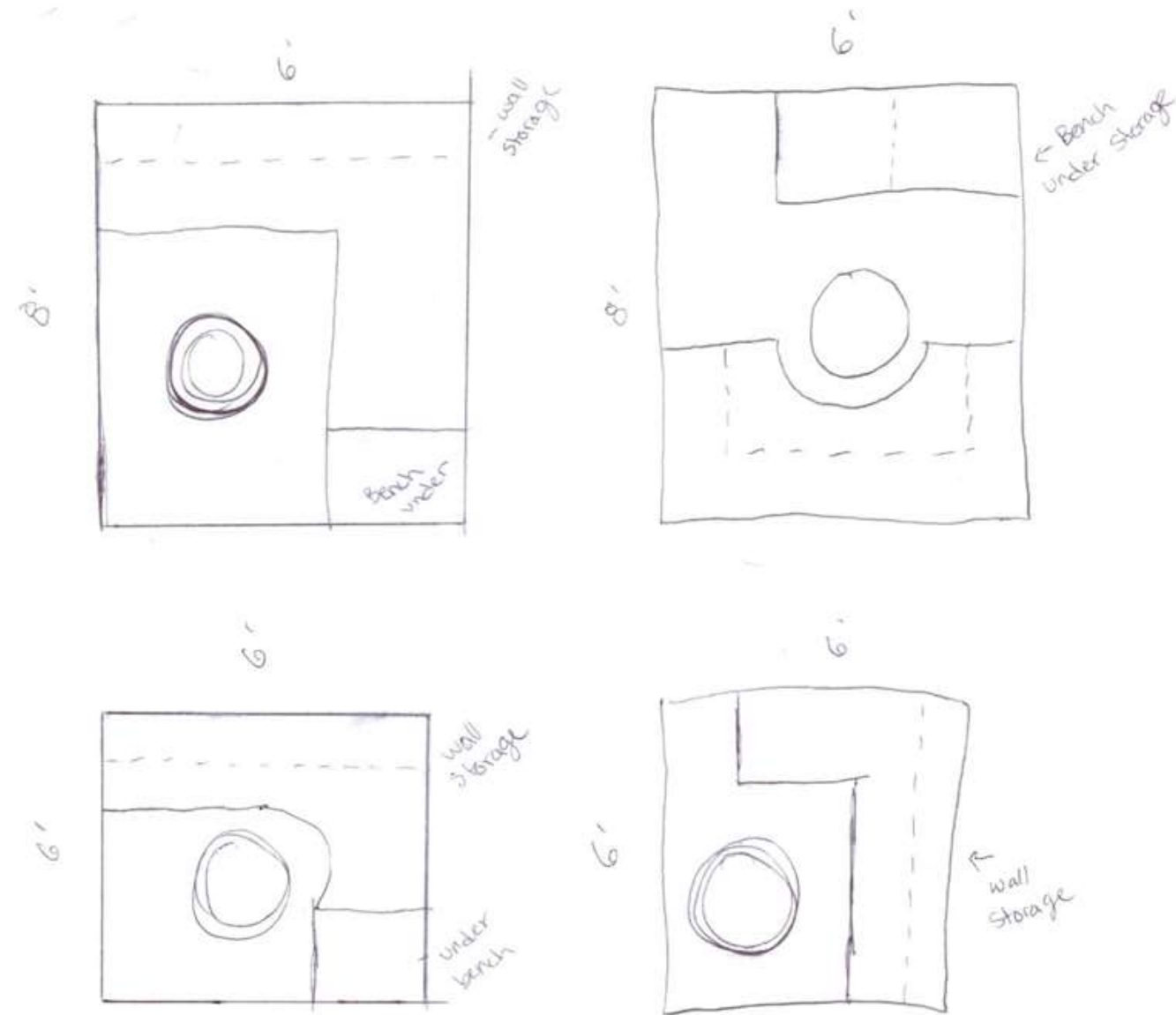
Blocking Diagram

- 2- Large and Small Conference rooms 1170.4 sq ft
- 3- Exhibition 924 sq ft
- 4- Technicians 862.4 sq ft
- 5- Reception and waiting area 462 sq ft
- 6- Storage/pantry/barista 523.6 sq ft
- 7- Director and Assistant offices 338.8 sq ft



Carly Brow
Portfolio 1
IDSN 2102
Charles Gustina

Space Standard Sketches



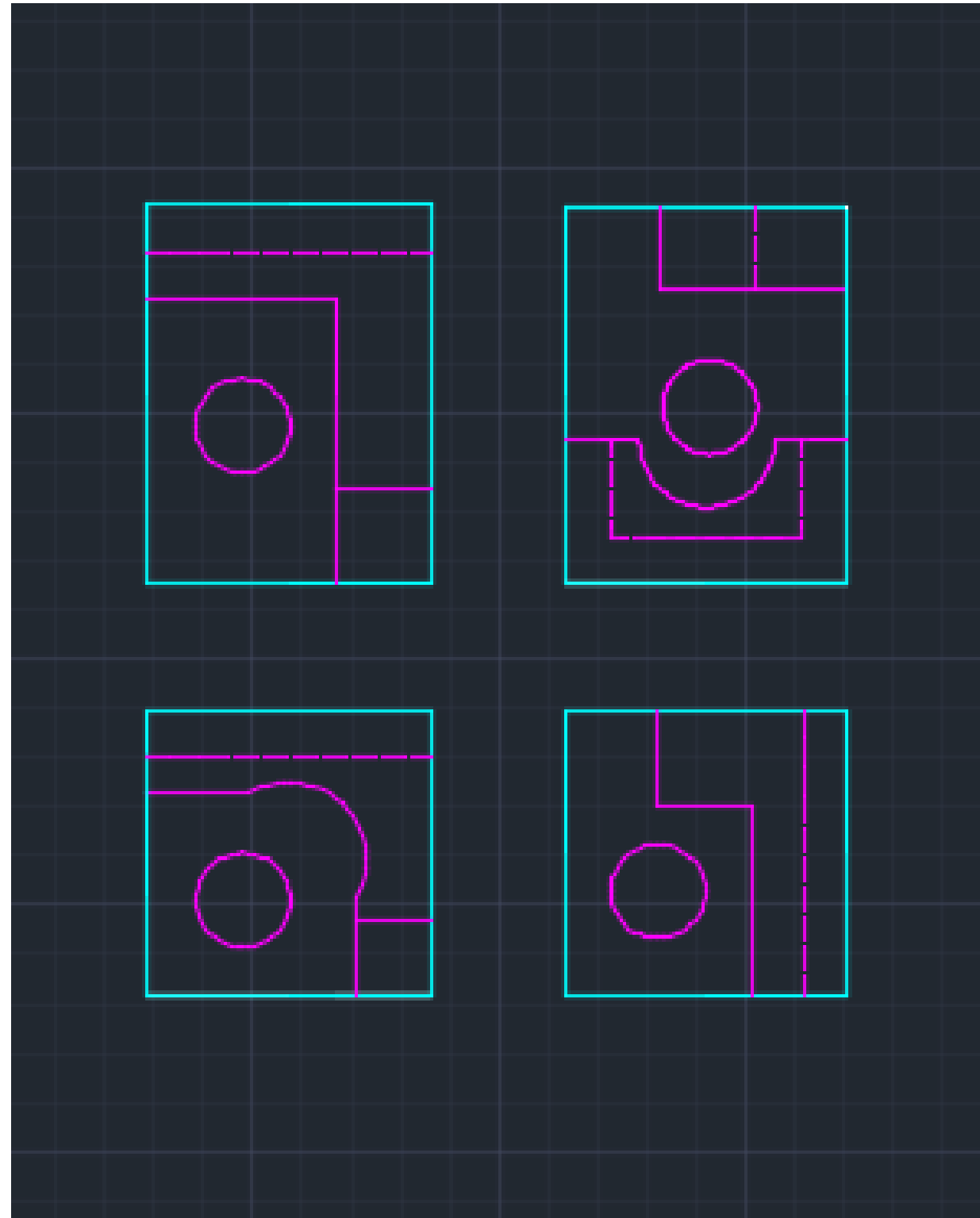
Carly Brow

Portfolio 1

IDSN 2102

Charles Gustina

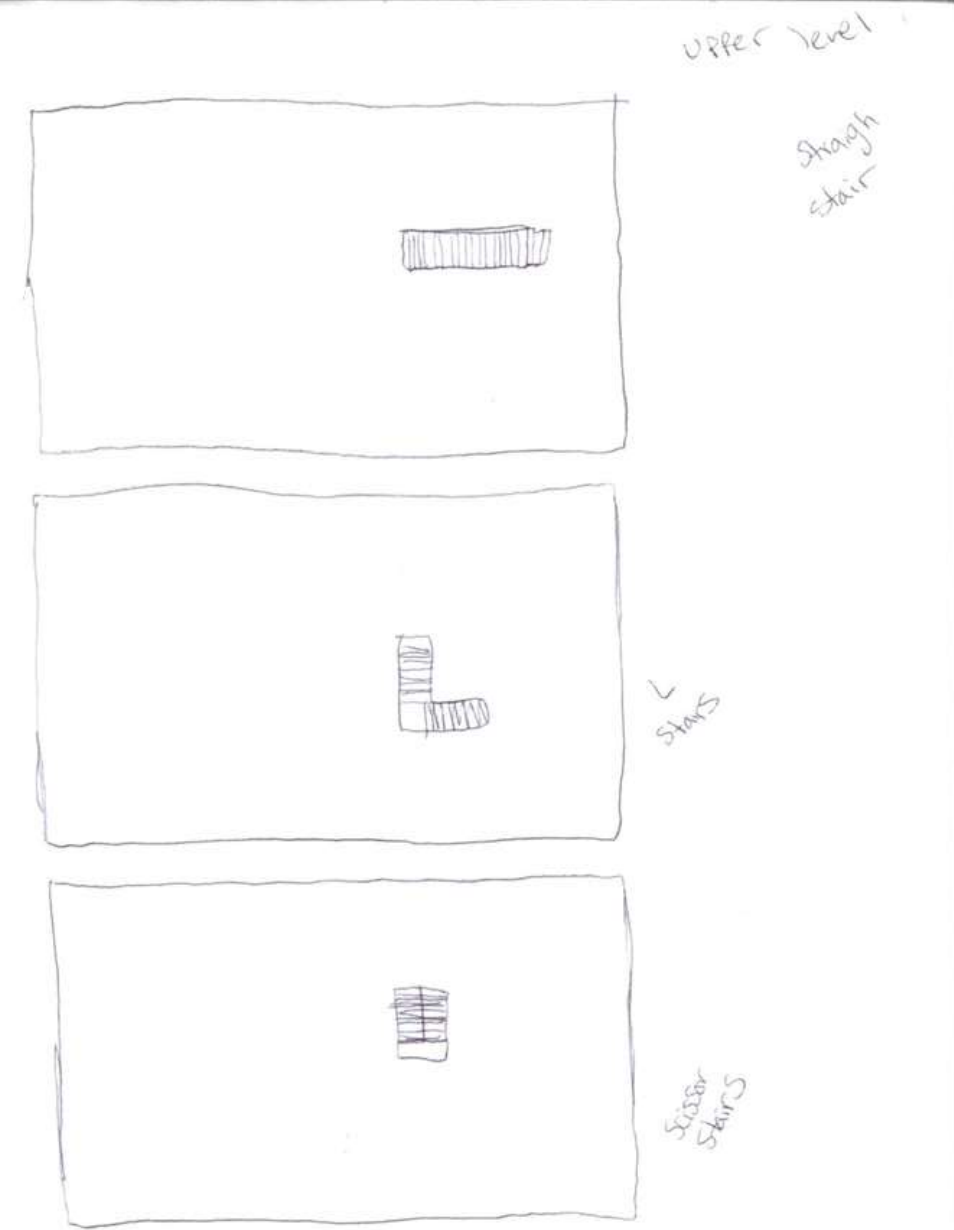
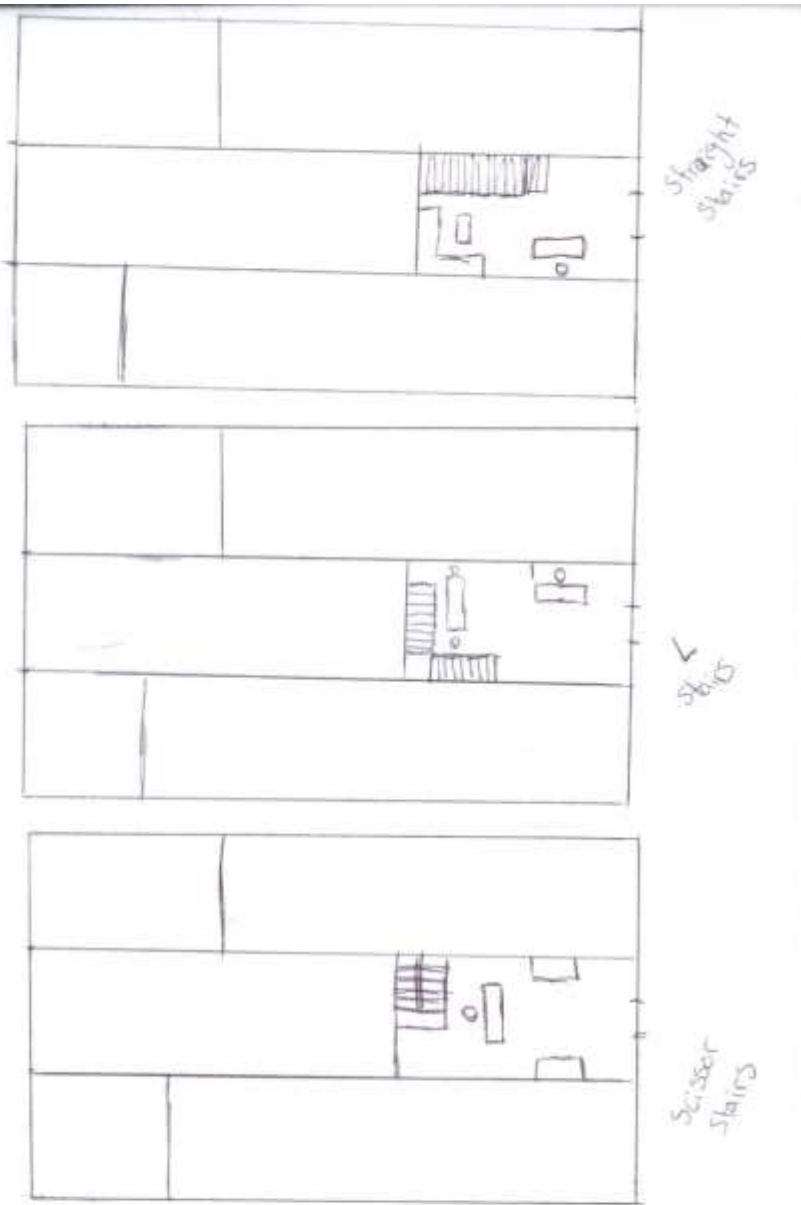
Space Standard AutoCad



Top two work stations 8' by 6'
Bottom two 6' 6'

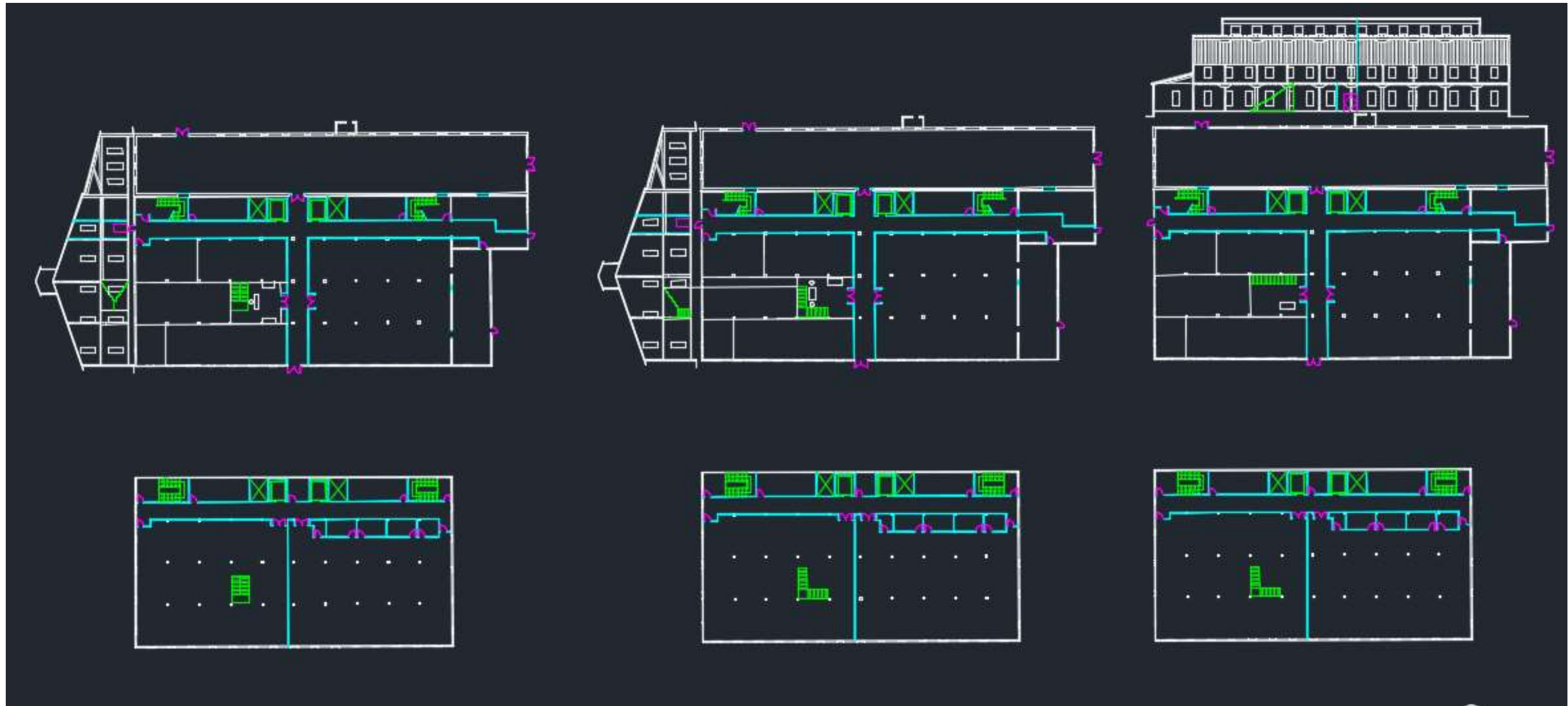
Carly Brow
Portfolio 1
IDSN 2102
Charles Gustina

Plan and Sections Sketches



Carly Brow
Portfolio 1
IDSN 2102
Charles Gustina

Plan and Sections AutoCad



Carly Brow
Portfolio 1
IDSN 2102
Charles Gustina

Stair Perspectives Scissor stairs 1



Carly Brow

Portfolio 1

IDSN 2102

Charles Gustina

Stair Perspective Scissor stairs 2



Carly Brow
Portfolio 1
IDSN 2102
Charles Gustina

Stair perspective L stairs 1



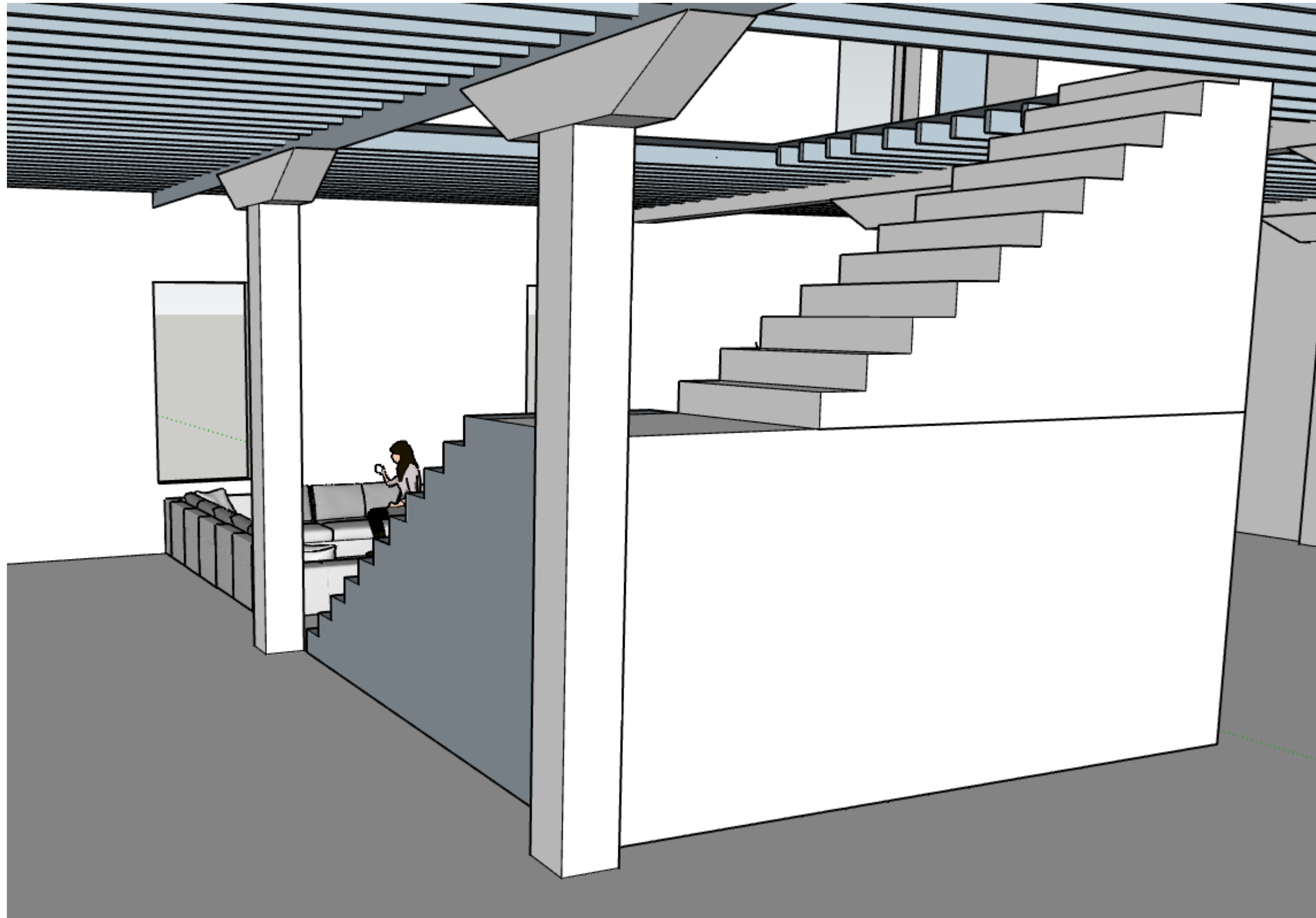
Carly Brow

Portfolio 1

IDSN 2102

Charles Gustina

Stair Perspective L 2



Carly Brow

Portfolio 1

IDSN 2102

Charles Gustina

Stair Perspective Straight Stairs 1



Carly Brow

Portfolio 1

IDSN 2102

Charles Gustina

Stair Perspective Straight Stairs



Carly Brow
Portfolio 1
IDSN 2102
Charles Gustina