



Historic Hughes Tobacco Warehouse

Portfolio 1

Cameron J. Giddings

Professor Gustina

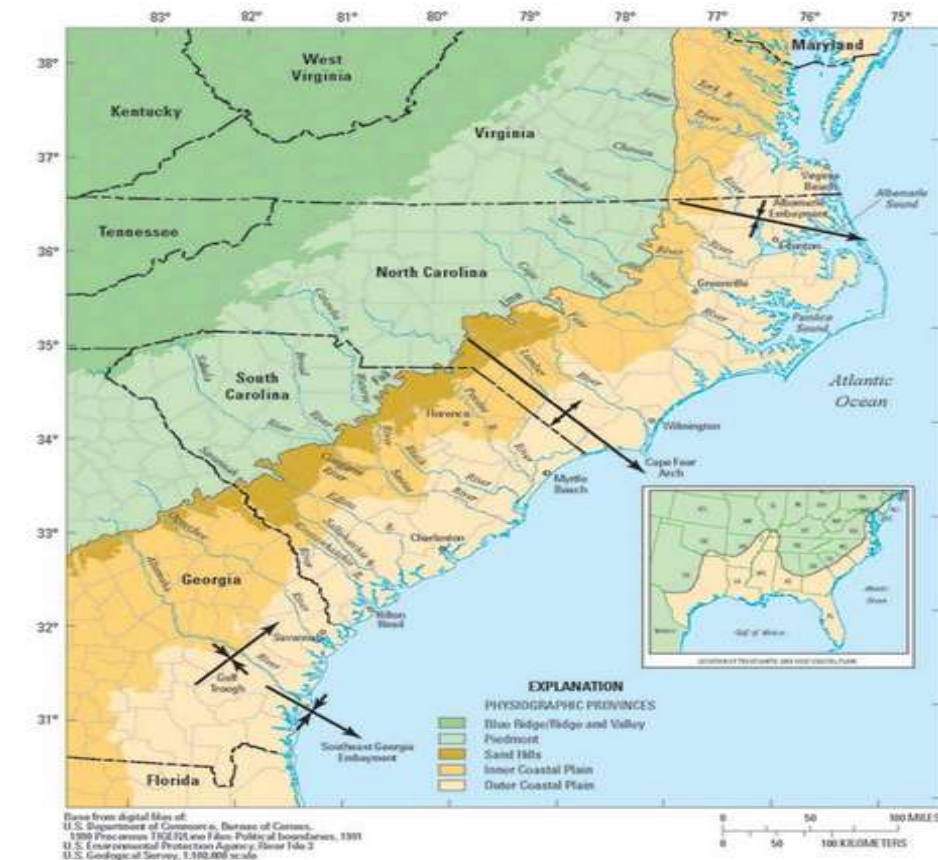
CLIENT PROFILE

The Gateway Center is a resource center for exploring the design history of the coastal south. Located in Greenville NC, the Center is a partnership between the North Carolina Department of Natural and Cultural Resources **and East Carolina University's** Department of History, with major funding from the Golden LEAF Foundation.

This state-of-the-art facility allows visitors and scholars to research the rich history of the region, as evidenced by the implements and furnishings used by residents. Research published and programs conducted by the Center paint a detailed portrait of everyday life in the area

The Center includes:

- Visitor reception area
- Exhibition space
- Meeting rooms with full audio/video capabilities
- Facilities for researchers
- Documentation workroom



PROGRAM SPREADSHEET

Gateway Center

PERSONNEL

Position	Personnel Totals		Unit Square Ft.		Extended Sq. Feet	Equipment			Notes
	Current	Future	Office	Workstation		PC	Printer	Fax	
					0				
Director	0	1	120		120	1	1		
					0				
Administrative Assistant	0	1		100	100	1	1		Locate directly outside Dir office
					0				
Receptionist	0	1		0	0	1	1		Included in Reception/Waiting
					0				
Visiting Fellows	0	8		48	384	8			Locate away from Entry; 1 Shared printer
					0				
Guest Research Stations	0	70		36	2520				May be split up; 1 Shared printer
					0				
Technicians	0	2	100		200	4	2		Locate near Workroom
					0				
Barista	0	1			0				Included in Pantry
					0				
Personnel Totals:	0	84			3324	15	5	0	

Department Summary

Information:

Personnel	3324	Square Ft.
Support	2360	Square Ft.
Sub Total:	5684	Square Ft.
Circulation	1.54	
Total Carpetable:	8753	Square Ft.

Interviewee:

Interview Date: _____
 Revision Submitted: _____
 Sign Off: _____

SUPPORT SPACES

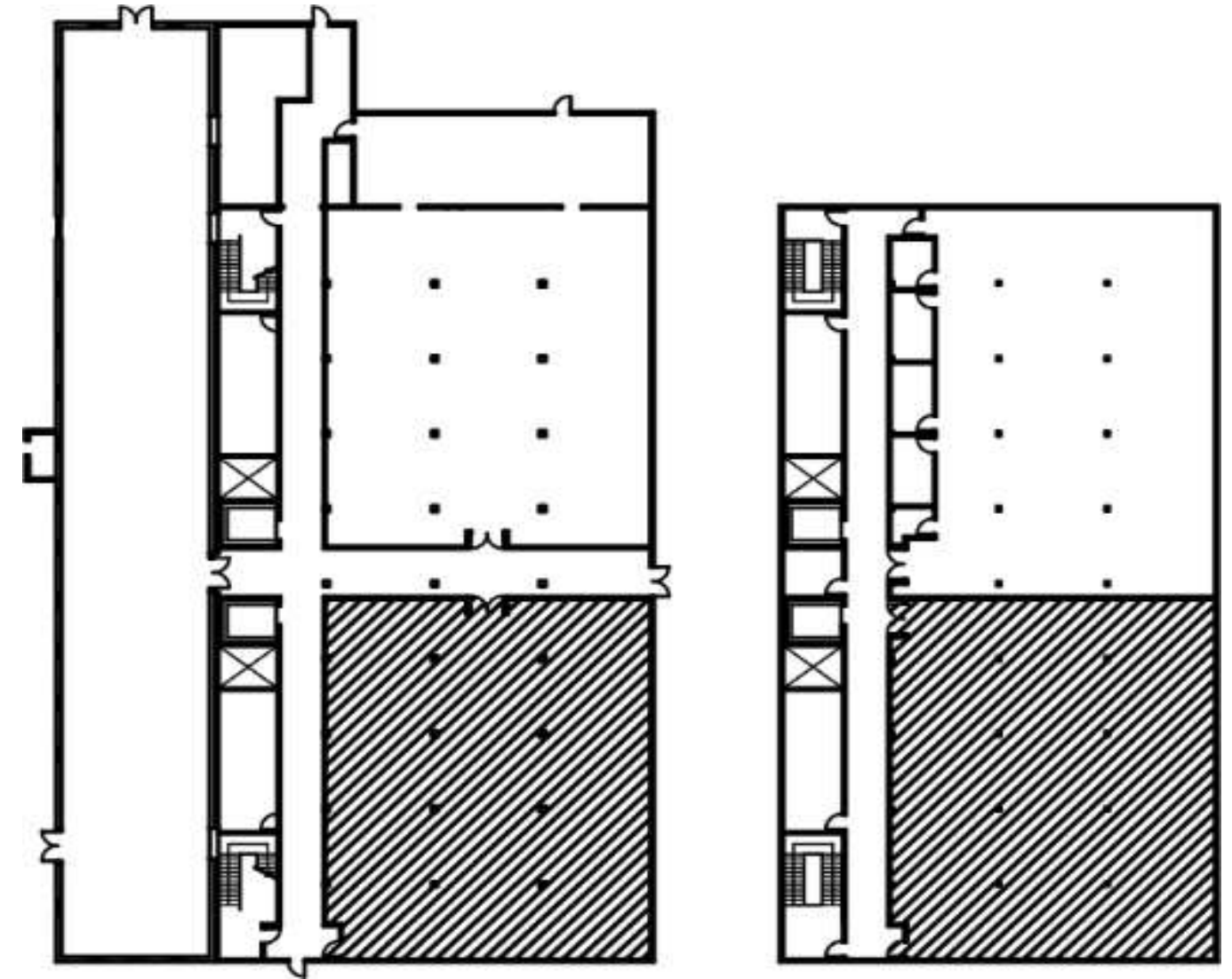
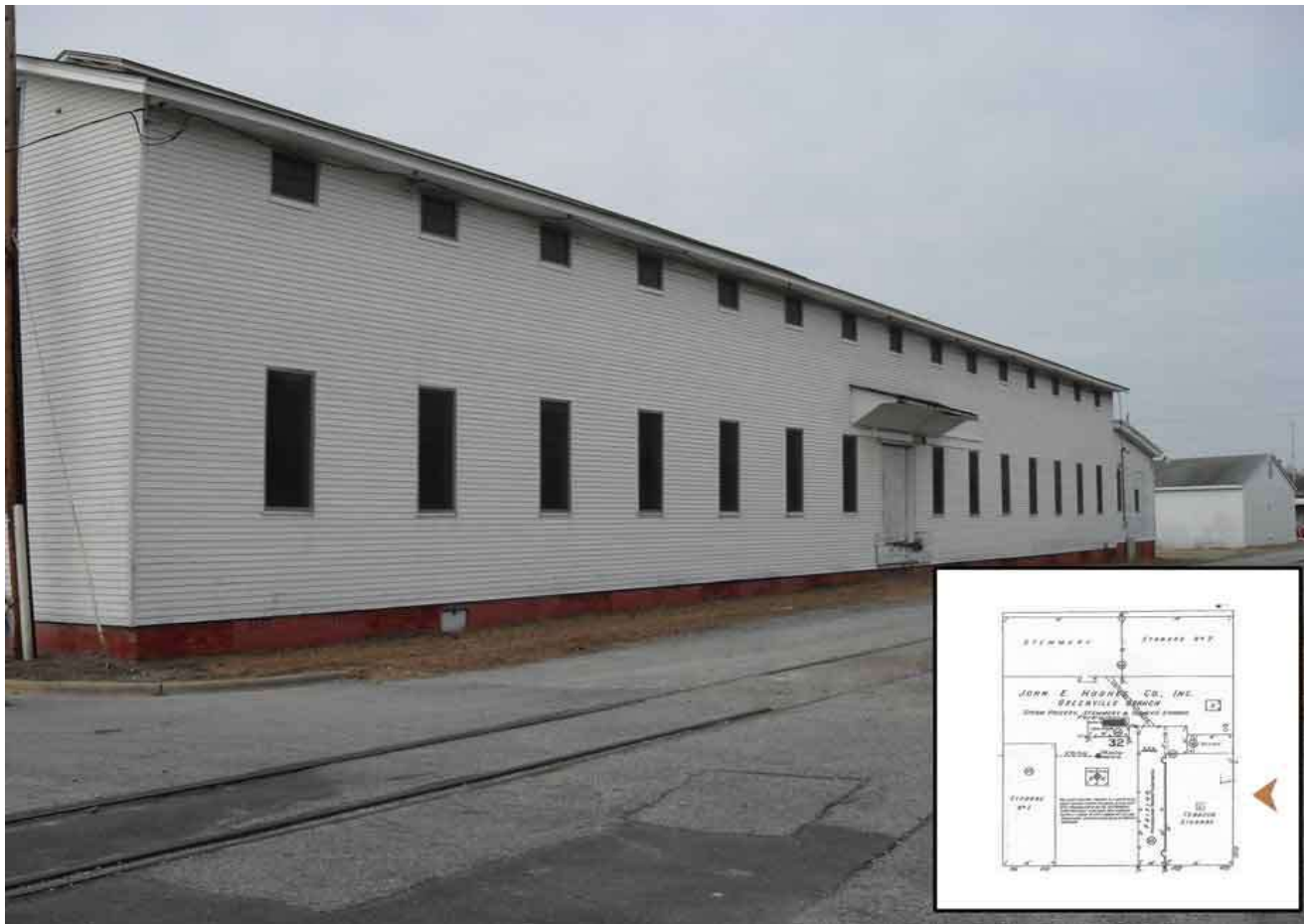
Space	Support/Equipment		Unit Square Feet		Extended Sq. Feet	Location	Notes
	Current	Future					
					0		
Reception/Waiting Area	0	1		300	300	Inside main entry; Visible from Admin Asst	Seating for 4 guests
					0		
Large Conference Room	0	1		400	400	Close to main entry	Seating for 14 at table, 6 at side; Full A/V
					0		
Small Conference Room	0	3		120	360	Adjacent to Large Conference	Seating for 4-5; Full A/V
					0		
Workroom	0	1		360	360	Locate away from Entry	Counter space and work tables
					0		
Storage	0	1		100	100	May be split and scattered through the space	
					0		
Pantry	0	1		240	240		
					0		
Exhibition Space	0	1		600	600	Close to main entry	Some walls for hanging work
Support Totals:					2360		

Department Notes:

Historic character important to users
 Space must be flexible

SITE PROFILE

- Pritchard-Hughes Tobacco Building
Pitt and 11th Streets
Greenville NC
- Erected: first quarter of the Twentieth Century
- Heavy timber construction
- Client to occupy tenant space on first and second floors



Building Exterior

1st Floor Tenant Area
4,280 Square Feet

2nd Floor Tenant Area
4,280 Square Feet

SITE ANALYSIS – PAGE 1

• **Daylight:**

- **North: No direct sunlight**
- **East: Morning Sunlight**
- **South: Continuous light**
- **West: Afternoon Sunlight**





SITE ANALYSIS – PAGE 2



RESEARCH – WORKPLACE DESIGN

History and Trends in Design for the Workplace

The office space was initially a space best known for isolation.



Between the 17th and 18th century planned activities increased requiring administration, archives and state courts to come together in the same building to “co-work”.

Ex: In 1581 Uffizi Palazzo built the Medici in Florence for this purpose



In the late 19th century there was an emergence of commercial offices in industrial cities.

Ex: Larkin Building designed by Frank Lloyd Wright. The first air-conditioned modern office building on record. Noted for numerous pivotal architectural and design aspects of what make today’s workplaces.¹



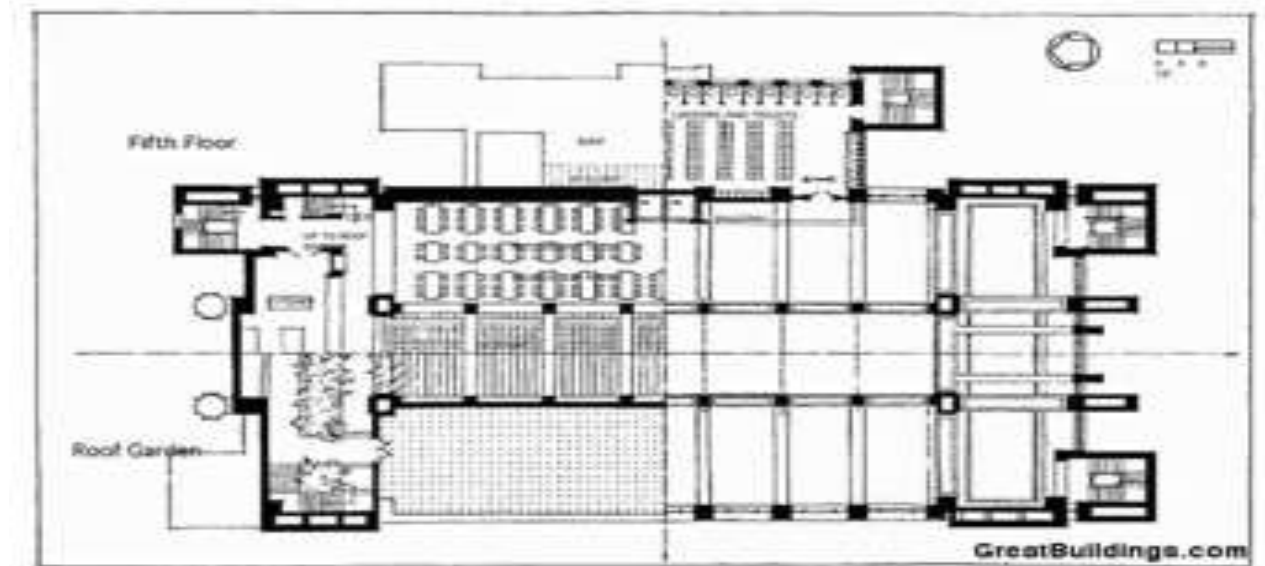
Innovations of the telephone, telegraph and railway caused offices to be OUTSIDE of production areas.



Ideas of Taylorism (increase efficiency in the work place) took place in the workplace creating a more bureaucratic work space.



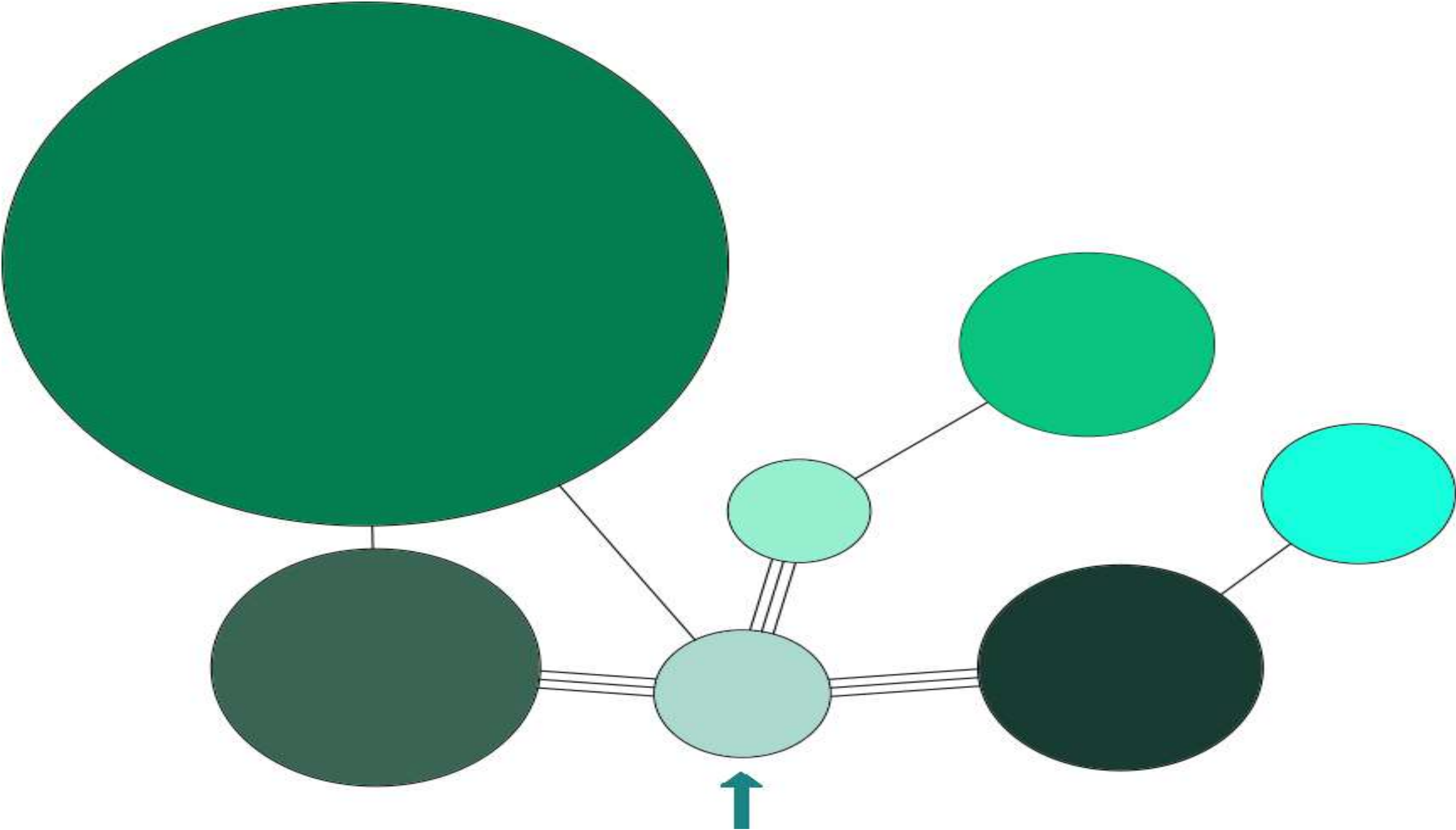
Workplaces were designed to be more functional. This new era office space allows workers to work “comfortable and functionally in co-working spaces”.²



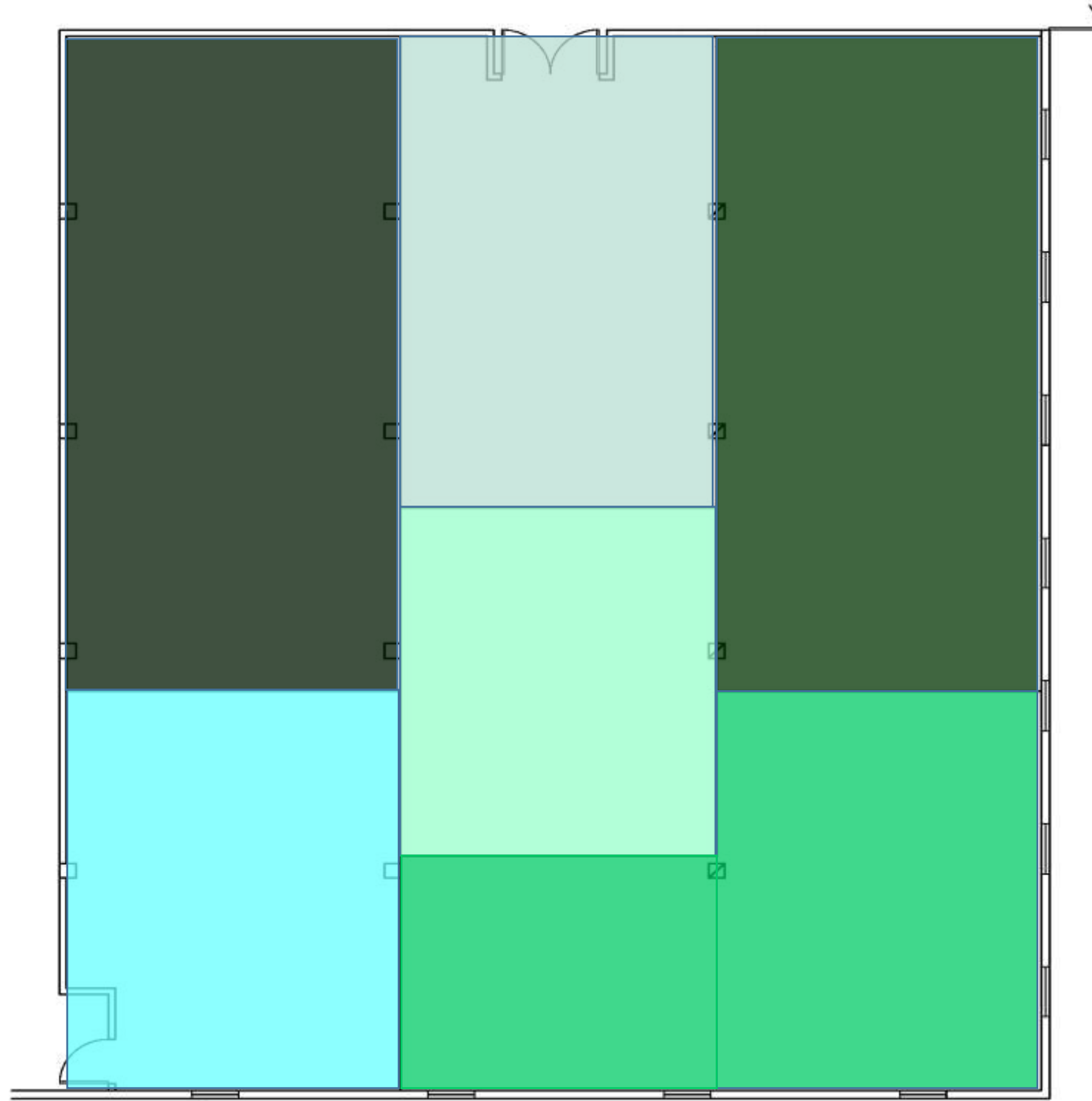
Larkin Building - Buffalo, New York



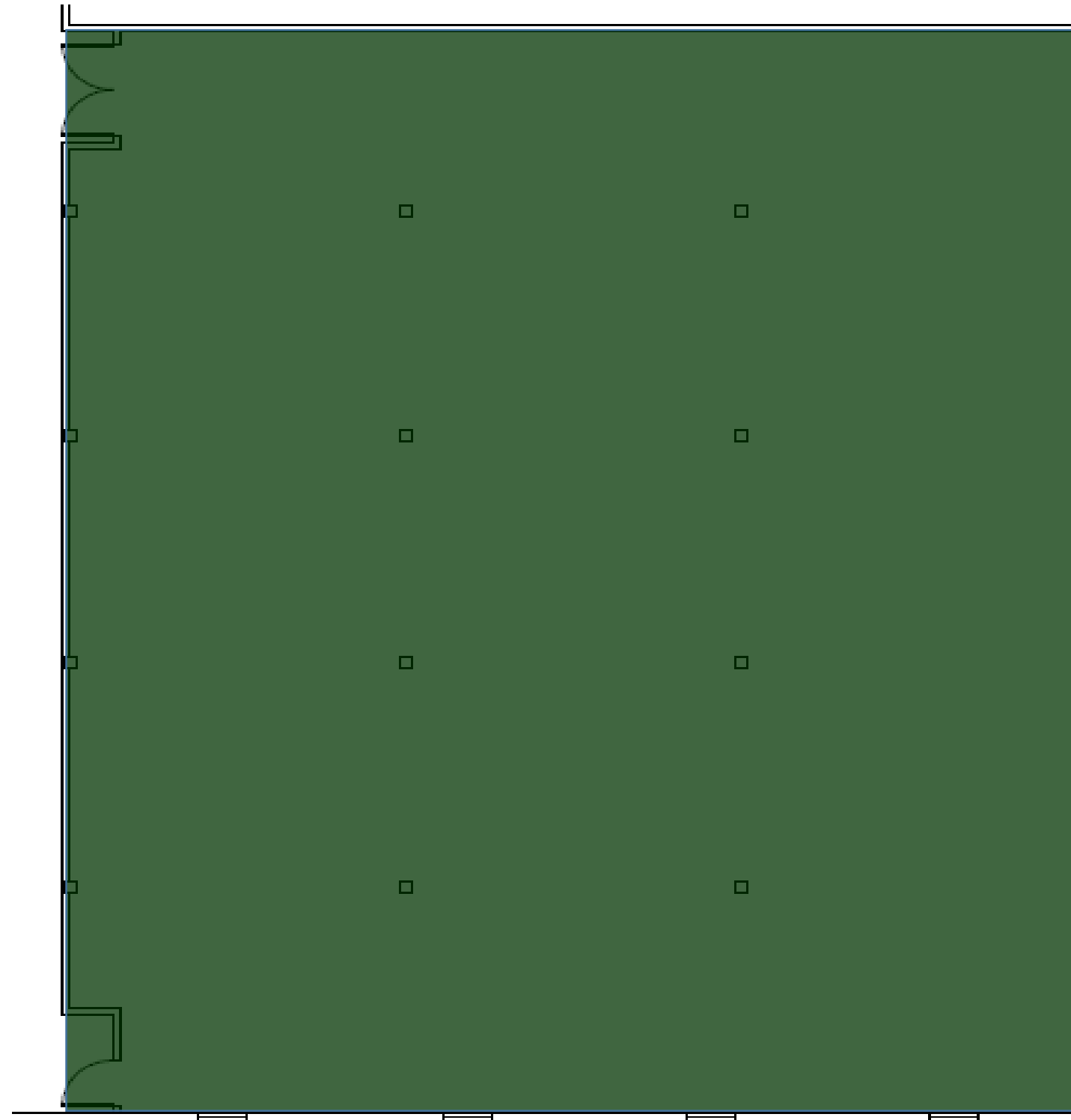
BUBBLE DIAGRAM



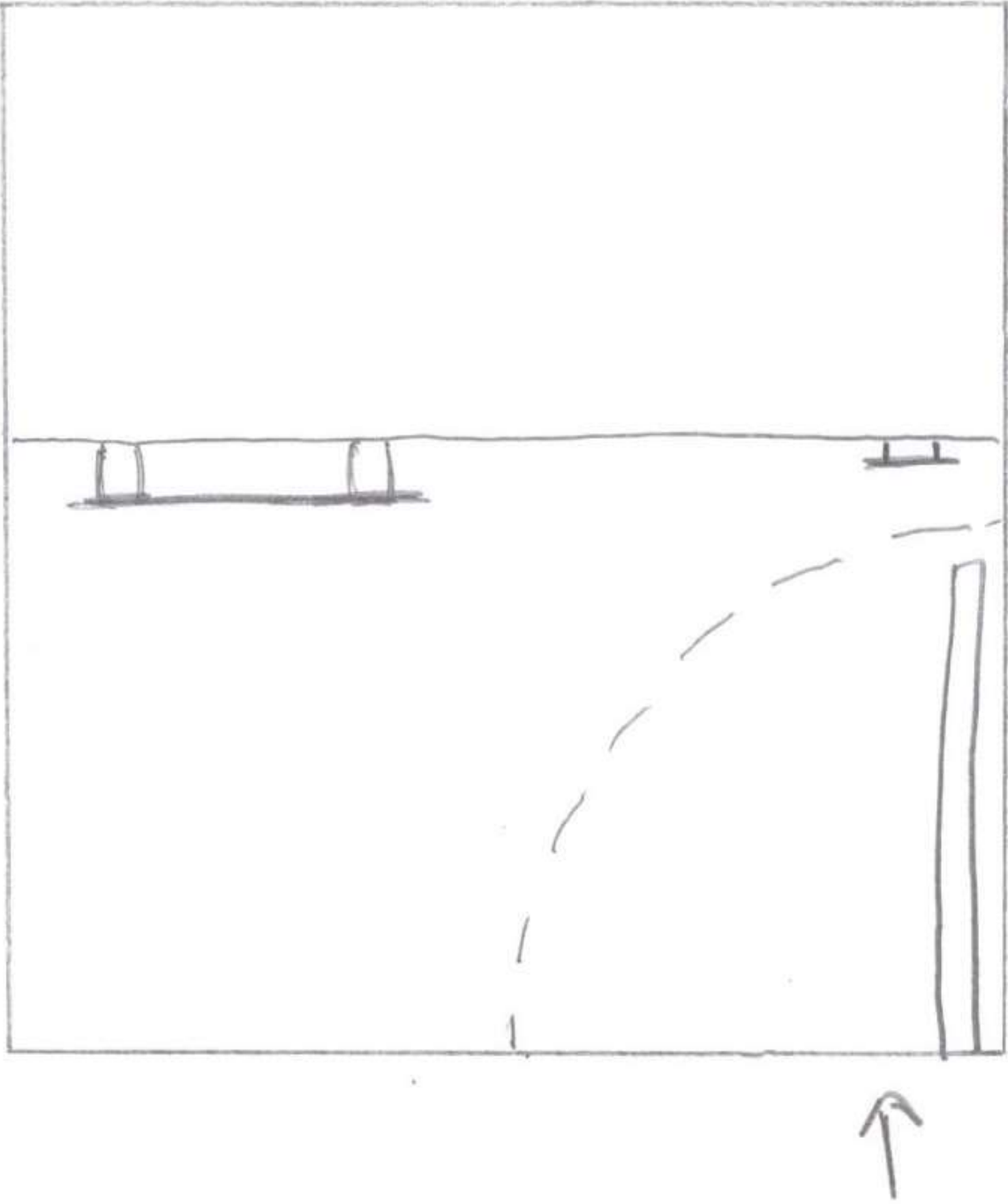
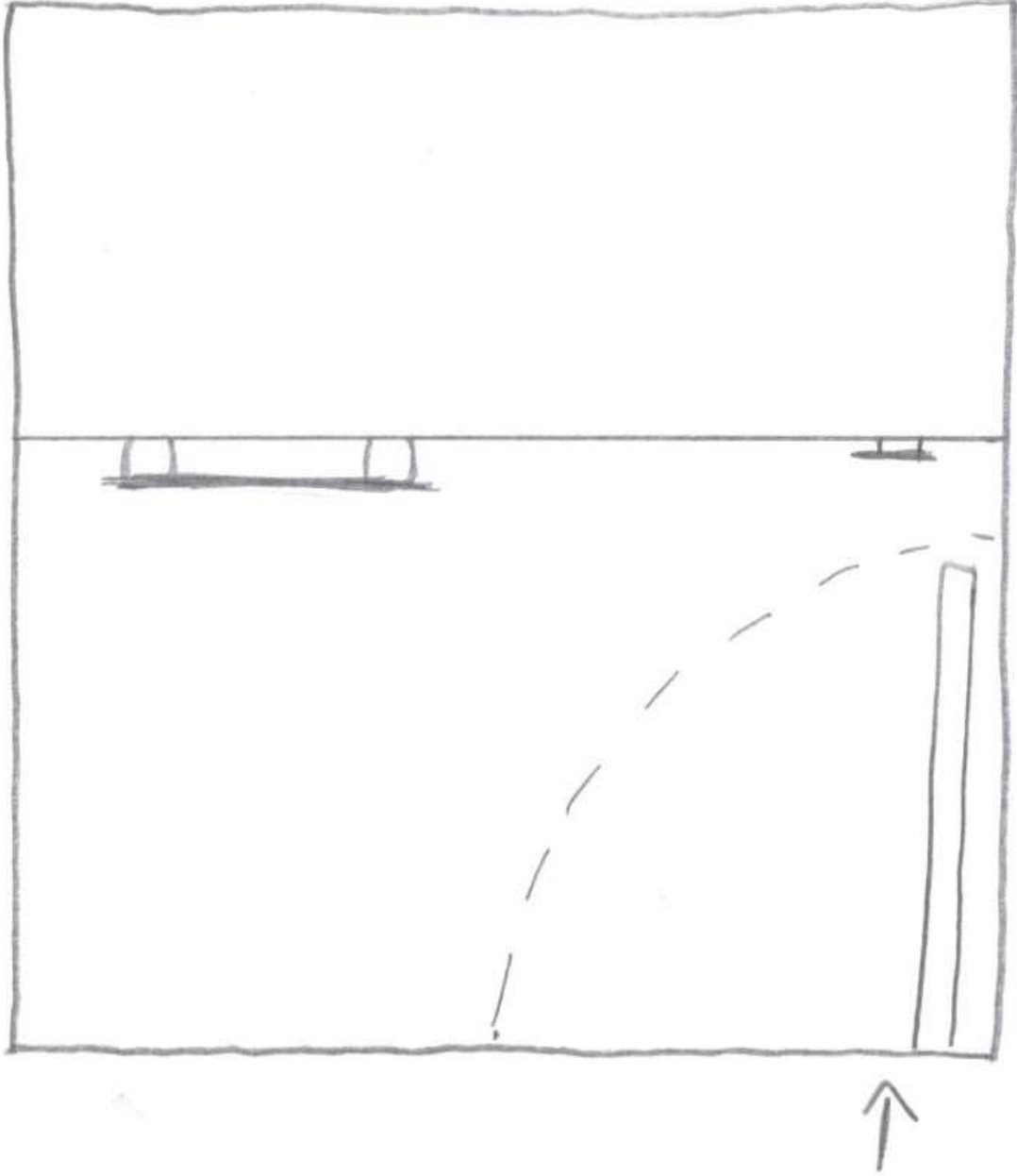
BLOCKING DIAGRAM - DOWNSTAIRS



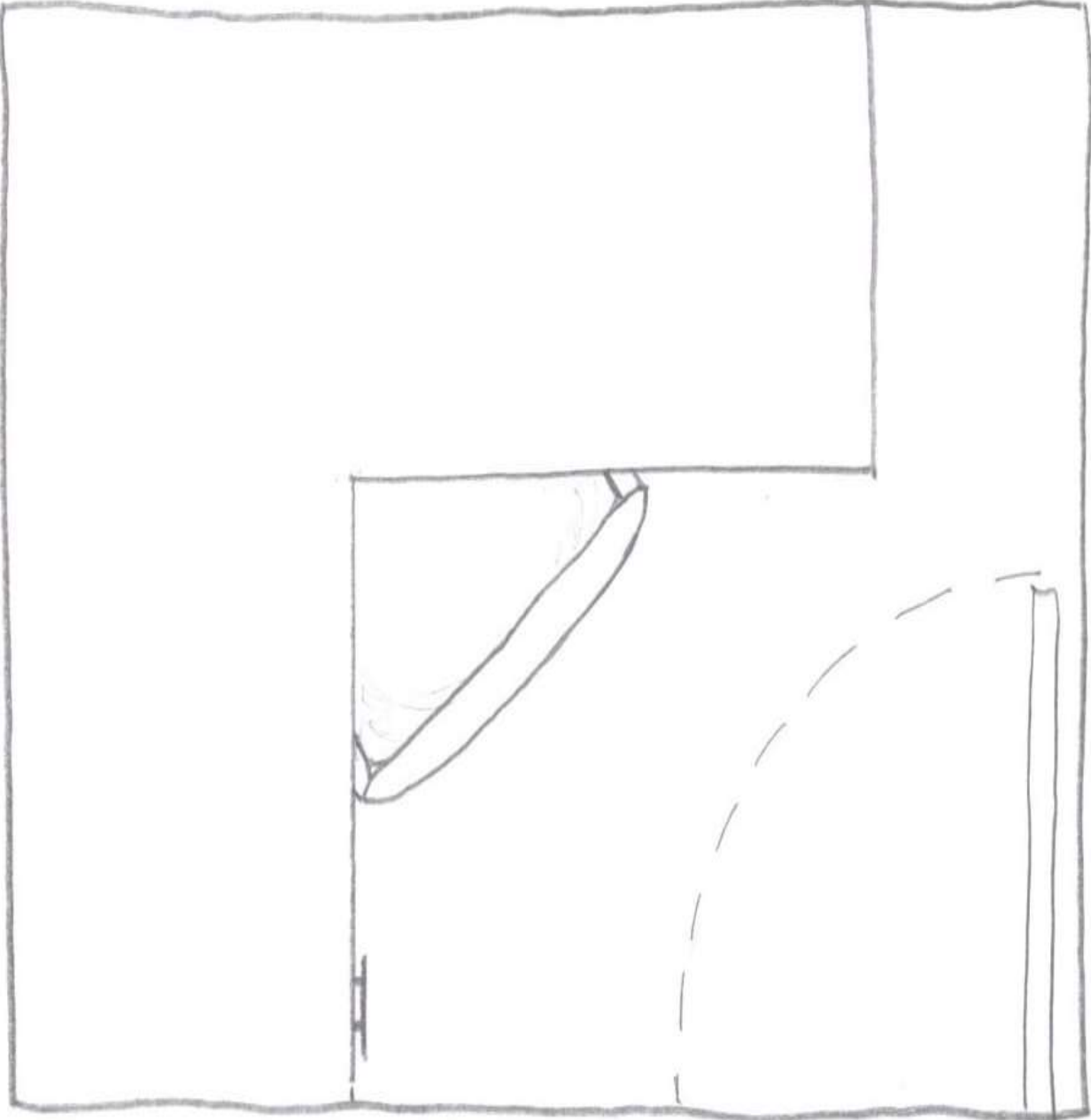
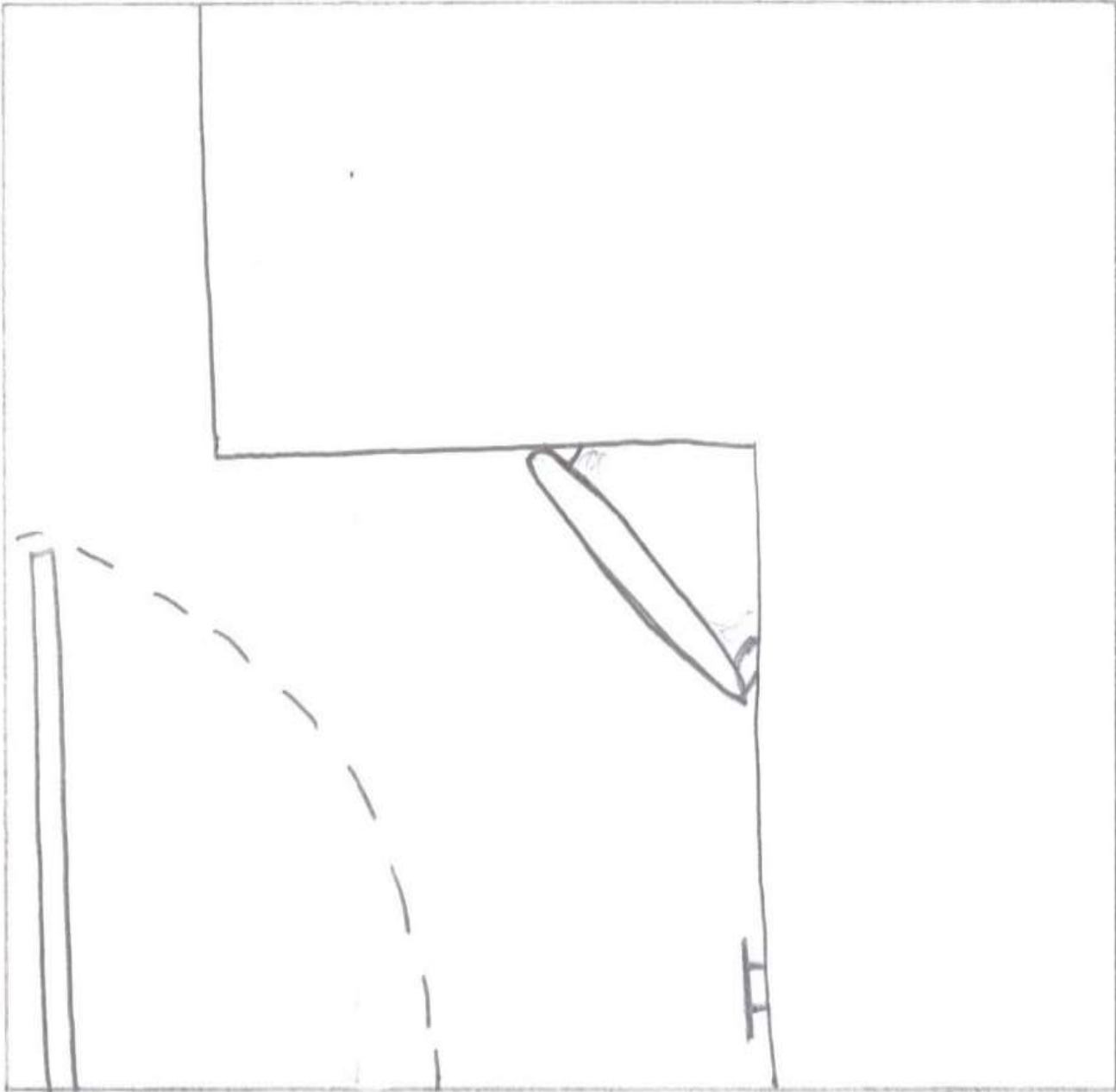
BLOCKING DIAGRAM – UPSTAIRS



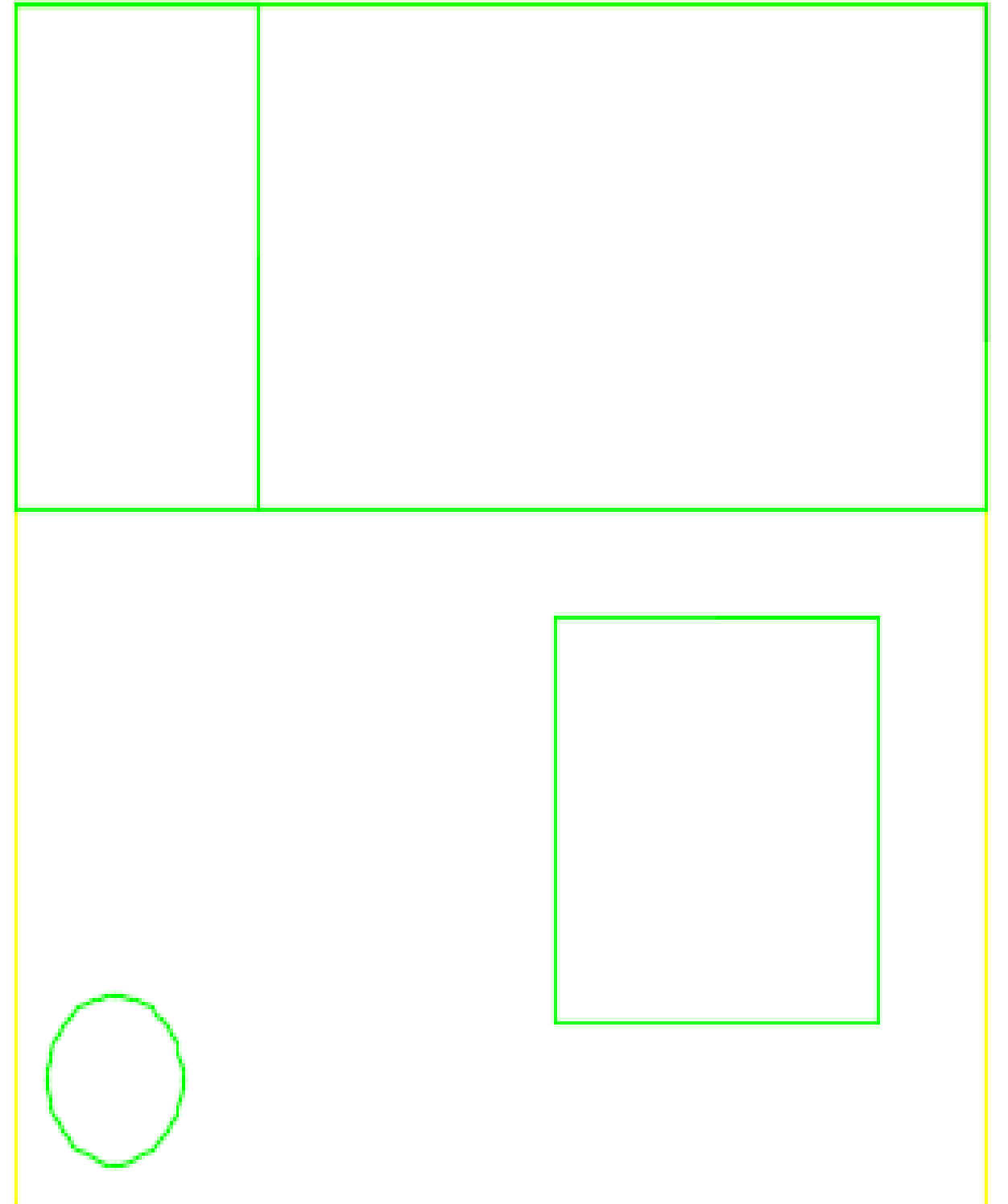
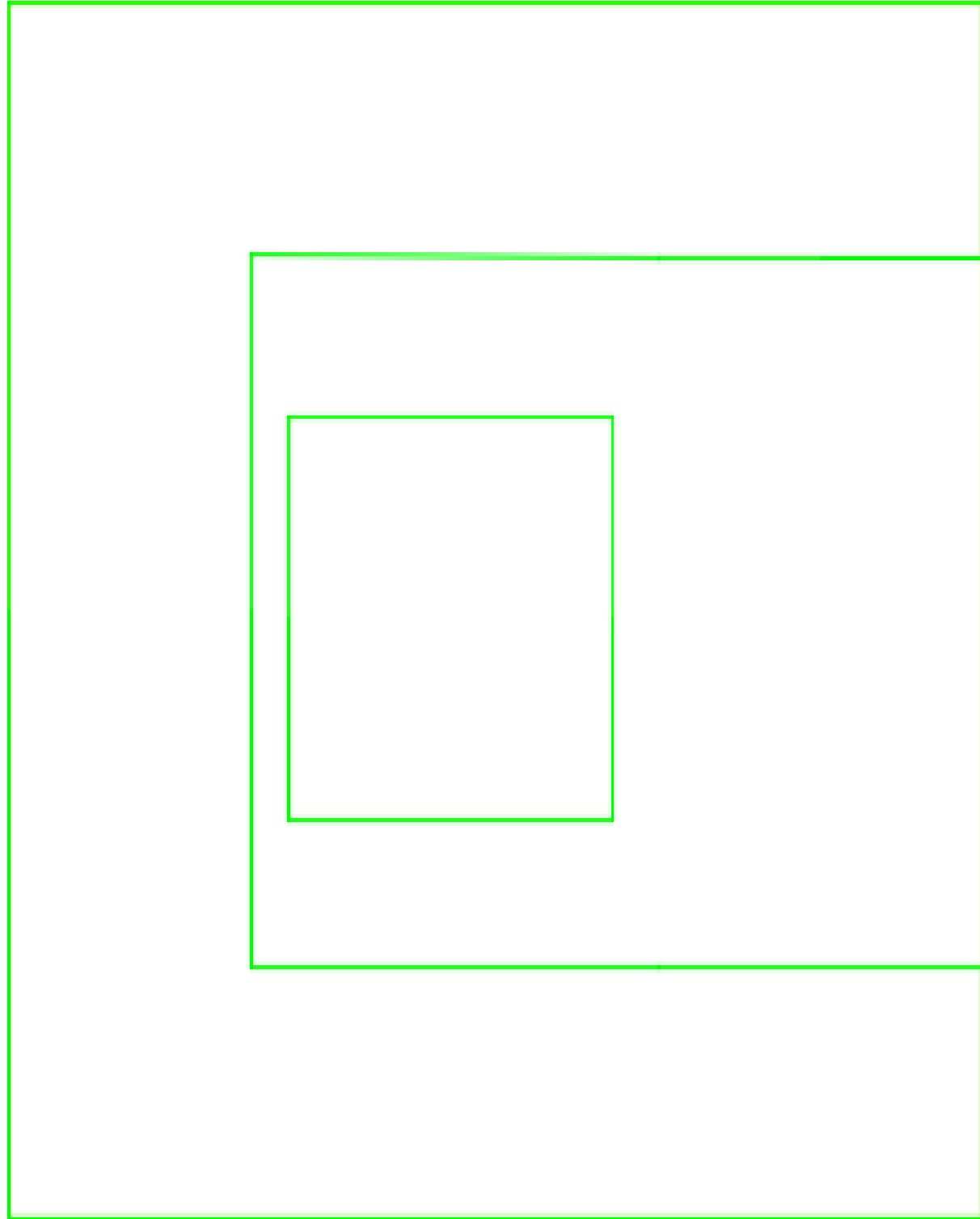
SPACE STANDARD DRAWINGS – 6X6 SKETCHES



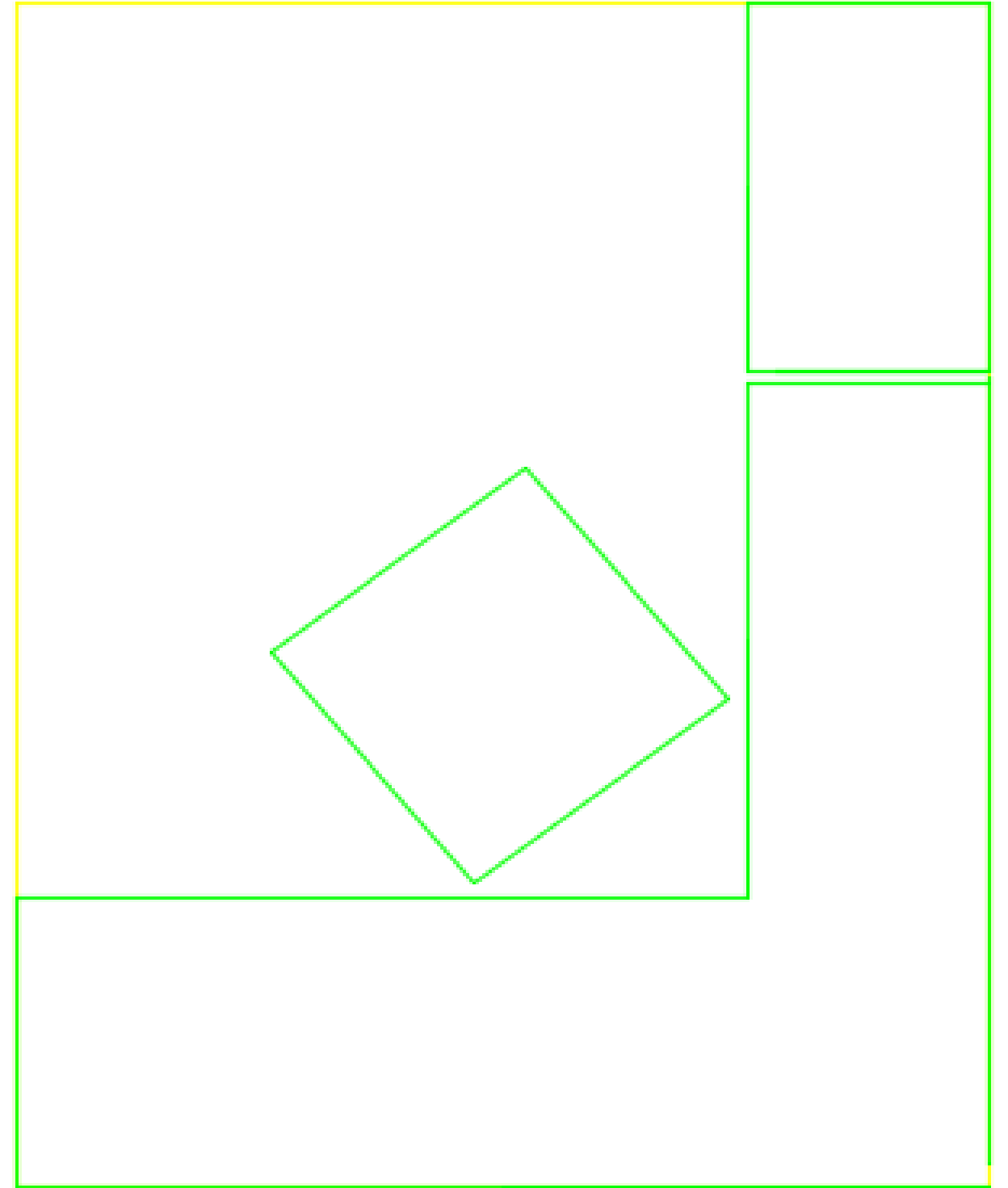
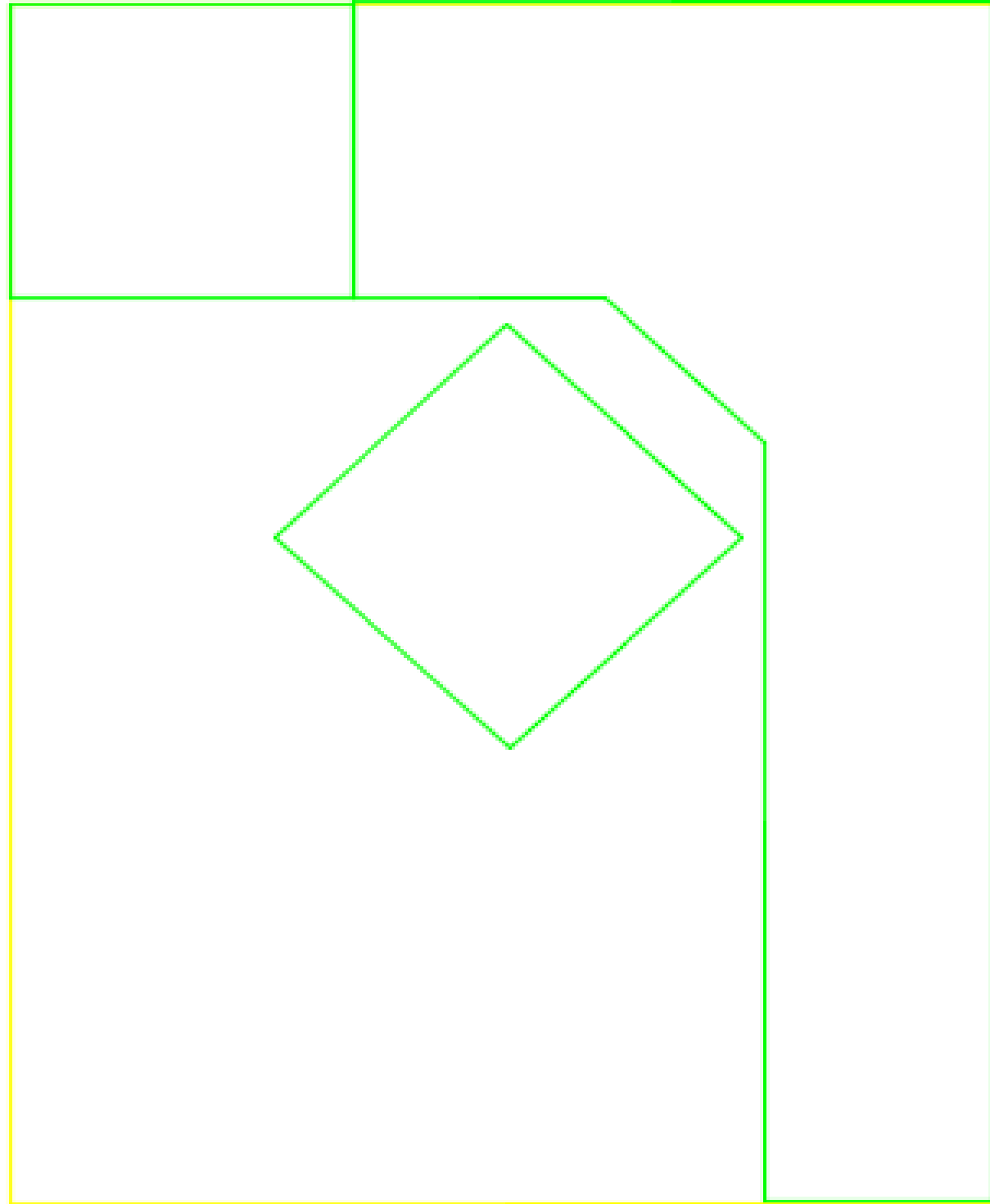
SPACE STANDARD DRAWINGS – 6X8 SKETCHES



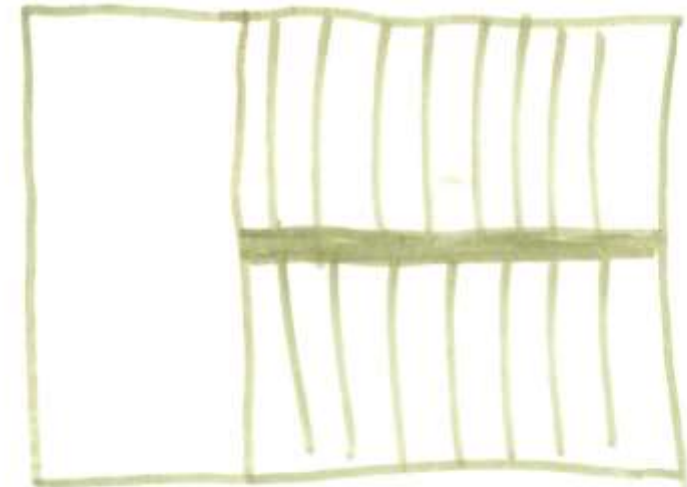
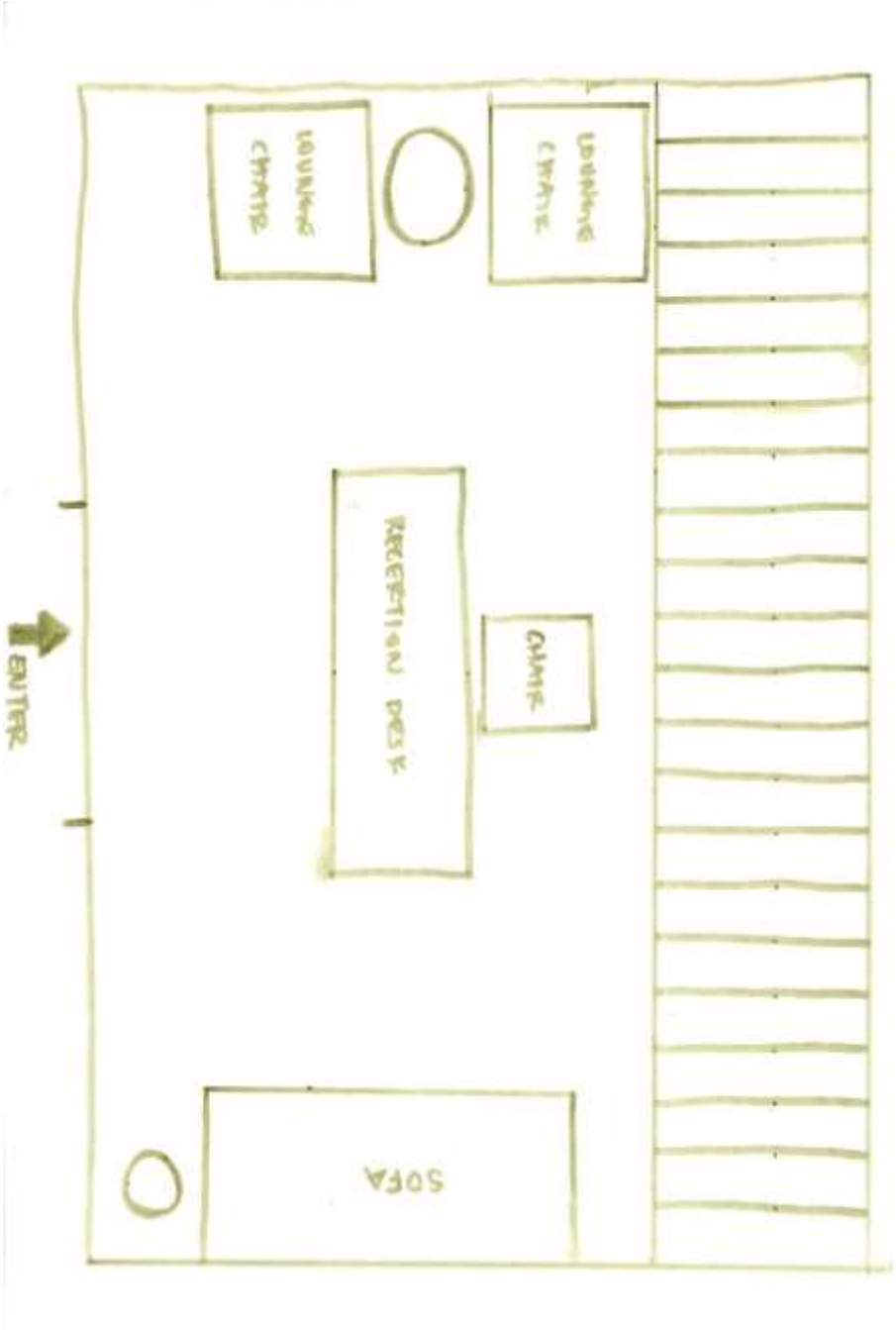
SPACE STANDARD DRAWINGS – 6X6 AUTOCAD



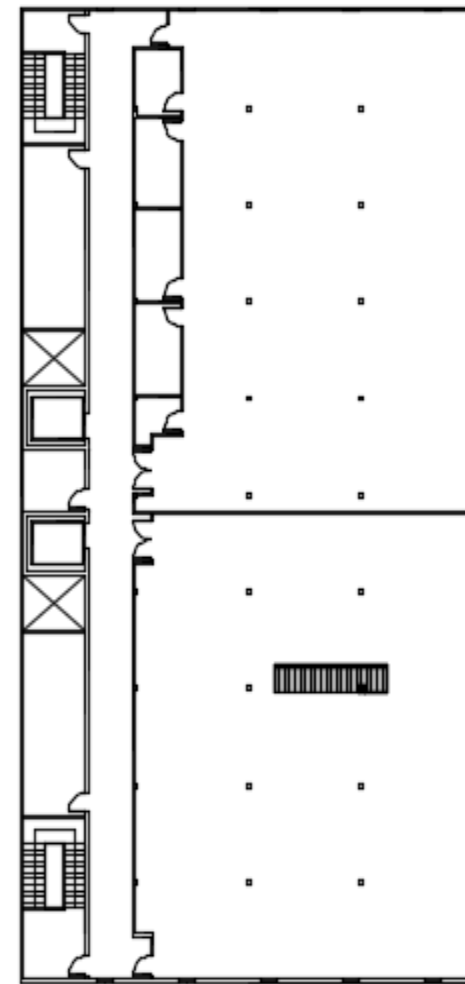
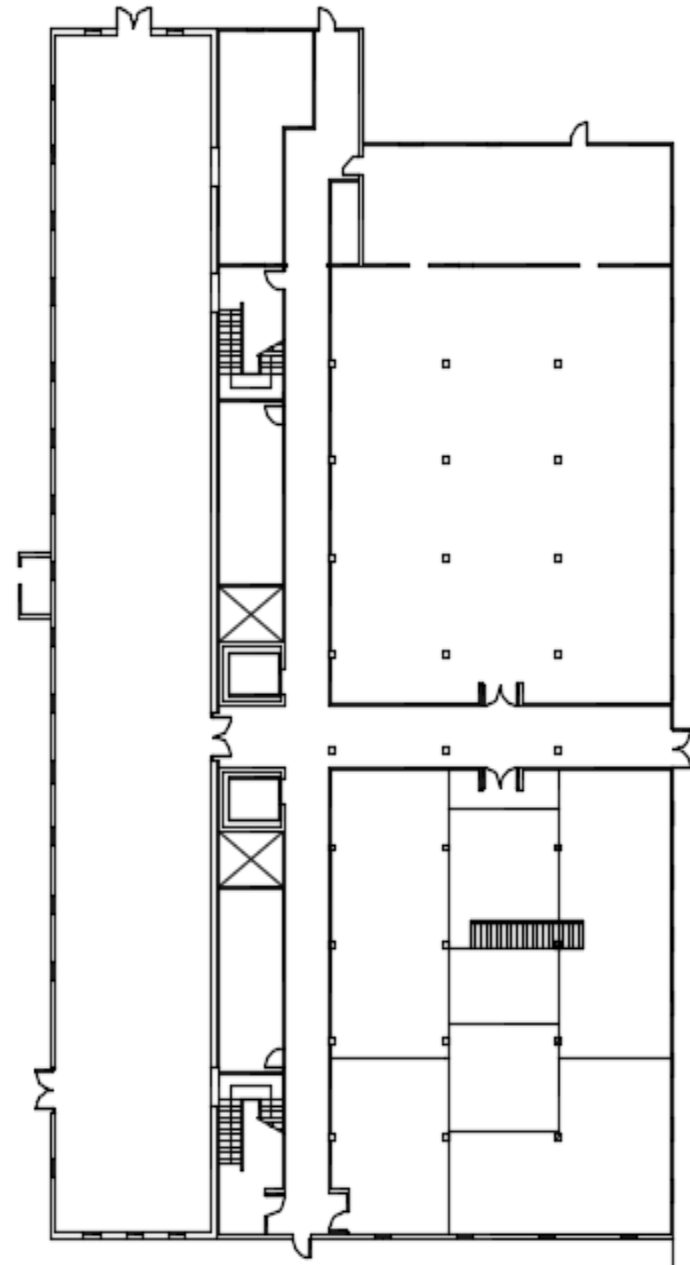
SPACE STANDARD DRAWINGS – 6X8 AUTOCAD



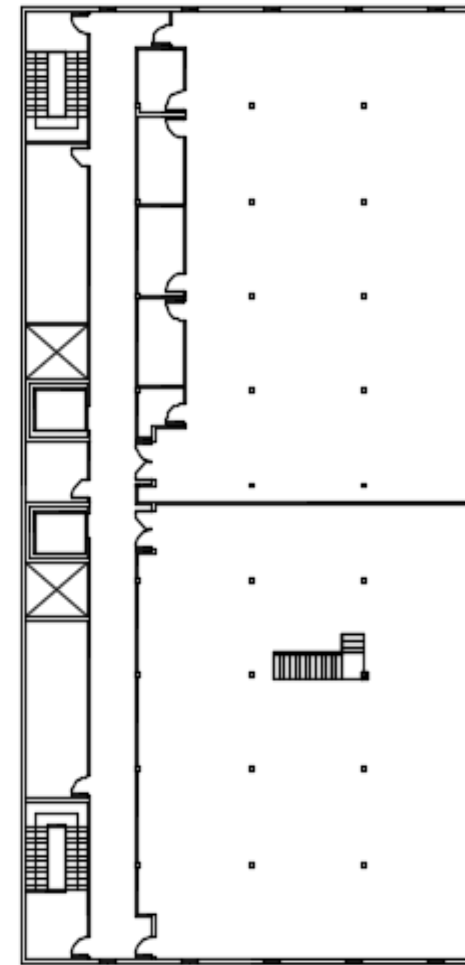
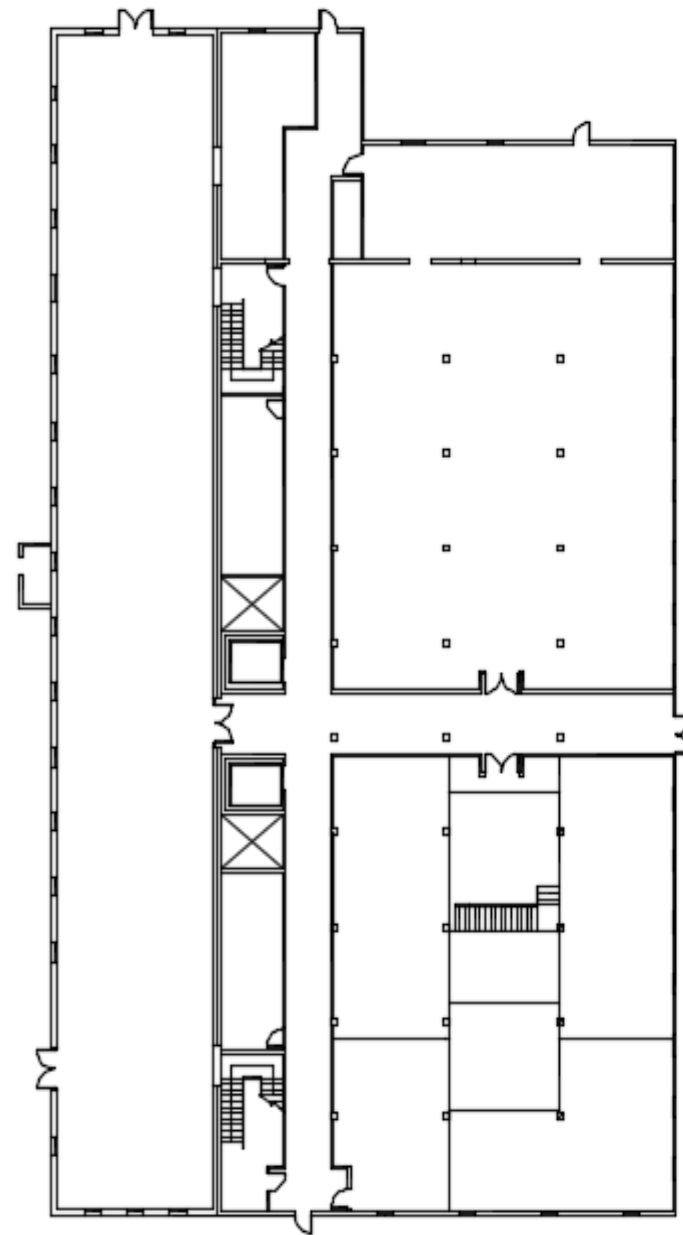
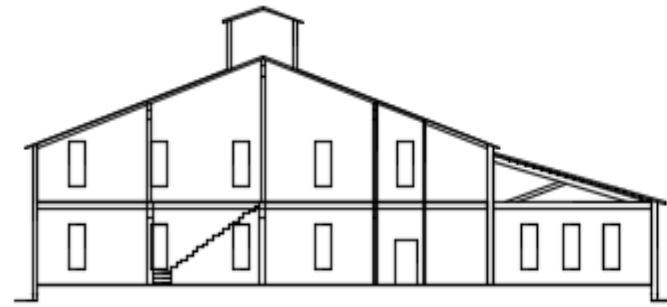
STAIRWAY – SKETCHES



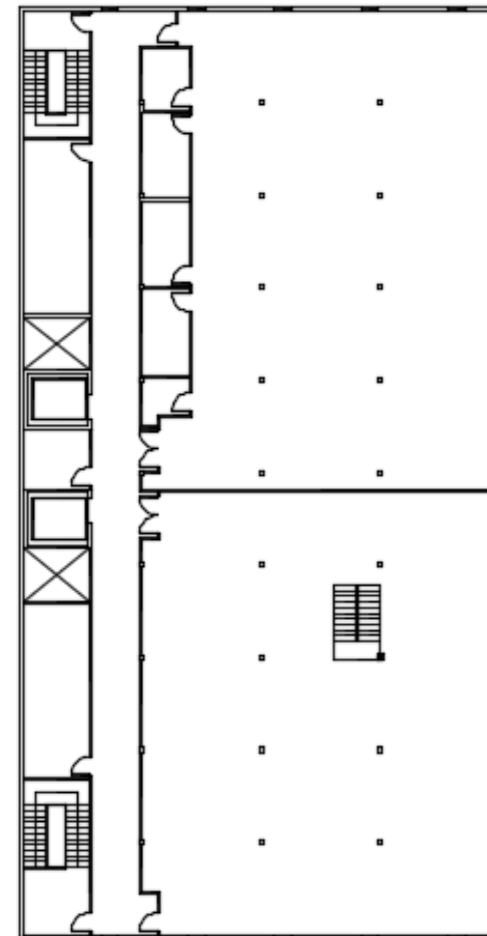
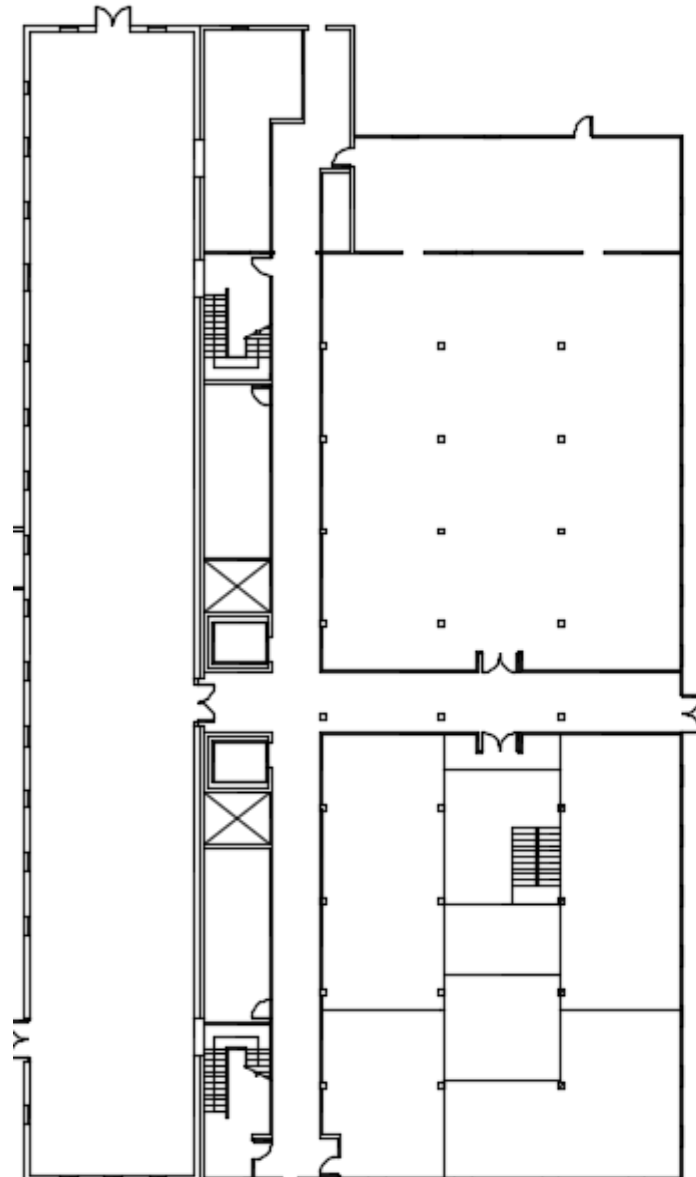
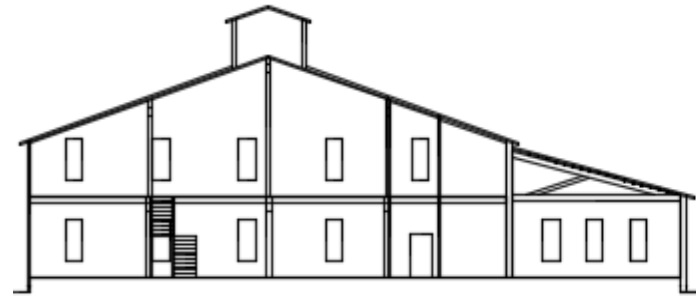
STRAIGHT RUN STAIRWAY – AUTOCAD



L-SHAPE STAIRWAY – AUTOCAD



SCISSOR STAIRWAY - AUTOCAD



STRAIGHT RUN STAIR – VIEW 1



STRAIGHT RUN STAIR – VIEW 2



L-SHAPE STAIR – VIEW 1



L-SHAPE STAIR – VIEW 2



SCISSOR STAIR – VIEW 1



SCISSOR STAIR – VIEW 2

