



Portfolio 1

Grasso, Gina Josephine
EAST CAROLINA UNIVERSITY
IDSN 2102

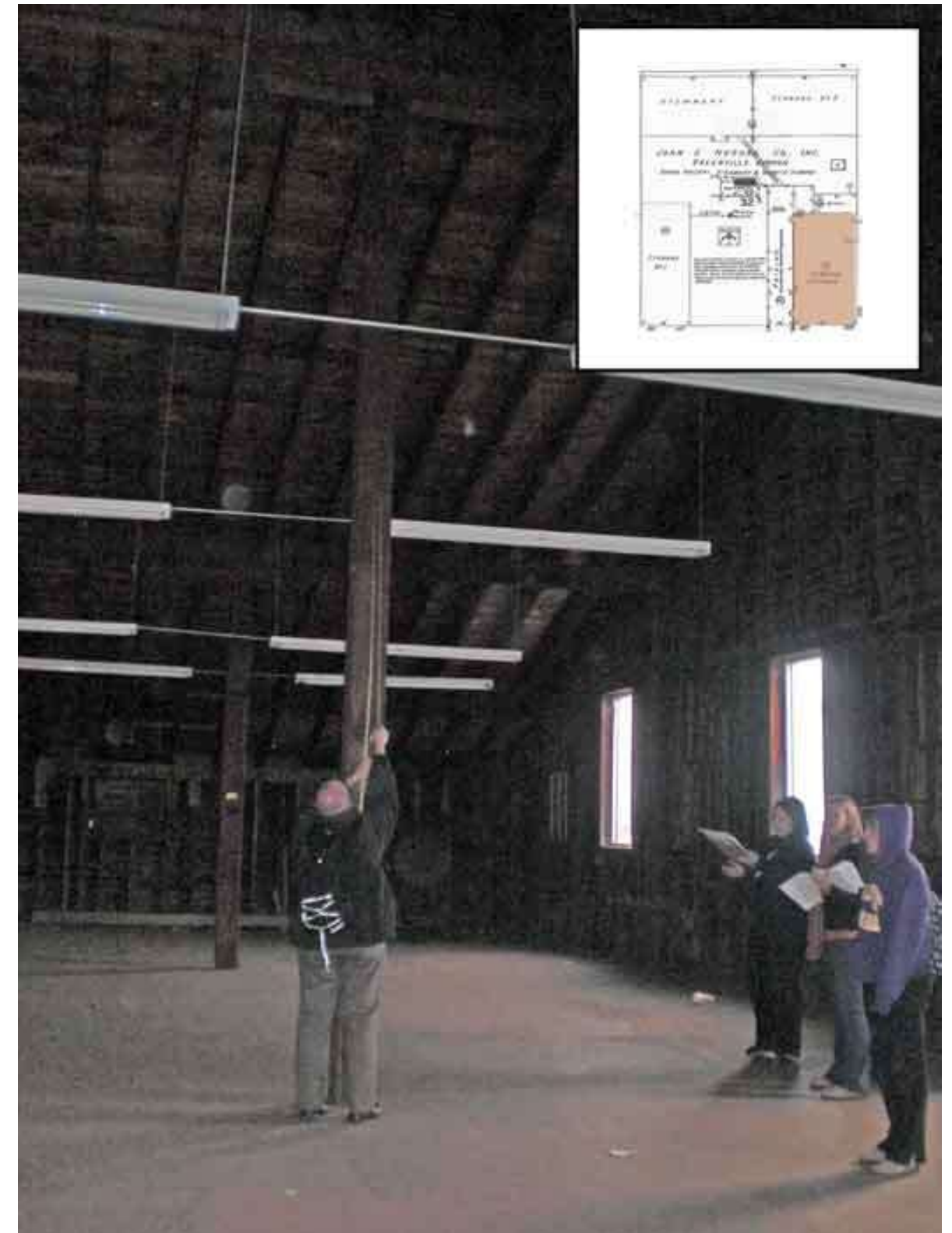
Client Profile

The Gateway Center is a resource center for exploring the design history of the coastal south. Located in Greenville NC, the Center is a partnership between the North Carolina Department of Natural and Cultural Resources and East Carolina University's Department of History, with major funding from the Golden LEAF Foundation.

This state-of-the-art facility allows visitors and scholars to research the rich history of the region, as evidenced by the implements and furnishings used by residents. Research published and programs conducted by the Center paint a detailed portrait of everyday life in the area

The Center includes:

- Visitor reception area
- Exhibition space
- Meeting rooms with full audio/video capabilities
- Facilities for researchers
- Documentation workroom



Program Spreadsheet

Gateway Center

PERSONNEL

Position	Personnel Totals		Unit Square Ft.		Extended Sq. Feet	Equipment			Notes
	Current	Future	Office	Workstation		PC	Printer	Fax	
					0				
Director	0	1	120		120	1	1		
					0				
Administrative Assistant	0	1		100	100	1	1		Locate directly outside Dir office
					0				
Receptionist	0	1		0	0	1	1		Included in Reception/Waiting
					0				
Visiting Fellows	0	8		48	384	8			Locate away from Entry; 1 Shared printer
					0				
Guest Research Stations	0	70		36	2520				May be split up; 1 Shared printer
					0				
Technicians	0	2	100		200	4	2		Locate near Workroom
					0				
Barista	0	1			0				Included in Pantry
					0				
Personnel Totals:	0	84			3324	15	5	0	

Department Summary

Information:
 Personnel 3324 Square Ft.
 Support 2360 Square Ft.
Sub Total: 5684 Square Ft.
 Circulation 1.54
Total Carpetable: 8753.36 Square Ft.

Interviewee:

Interview Date: _____
 Revision Submitted: _____
 Sign Off: _____

SUPPORT SPACES

Space	Support/Equipment		Unit Square Feet	Extended Sq. Feet	Location	Notes
	Current	Future				
				0		
Reception/Waiting Area	0	1		300	Inside main entry; Visible from Admin Asst	Seating for 4 guests
				0		
Large Conference Room	0	1		400	Close to main entry	Seating for 14 at table, 6 at side; Full A/V
				0		
Small Conference Room	0	3		120	Adjacent to Large Conference	Seating for 4-6; Full A/V
				0		
Workroom	0	1		360	Locate away from Entry	Counter space and work tables
				0		
Storage	0	1		100	May be split and scattered through the space	
				0		
Pantry	0	1		240		
				0		
Exhibition Space	0	1		600	Close to main entry	Some walls for hanging work
Support Totals:				2360		

Department Notes:

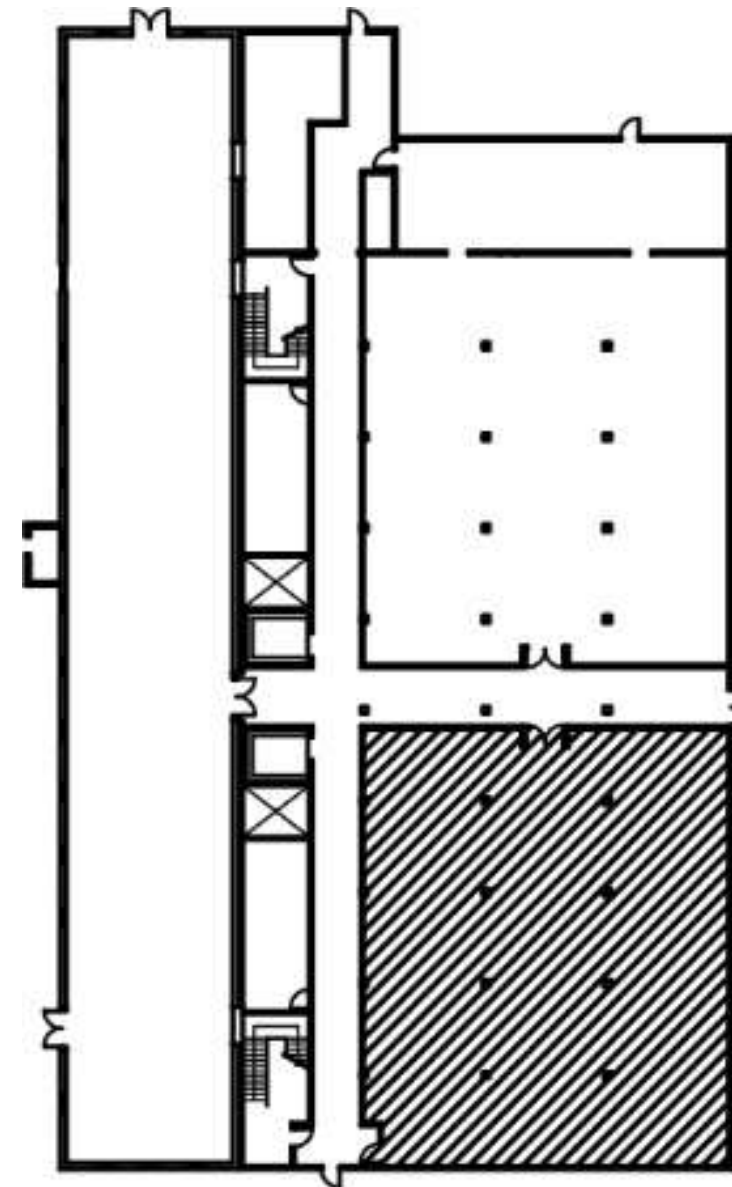
Historic character important to users
 Space must be flexible

Site Profile

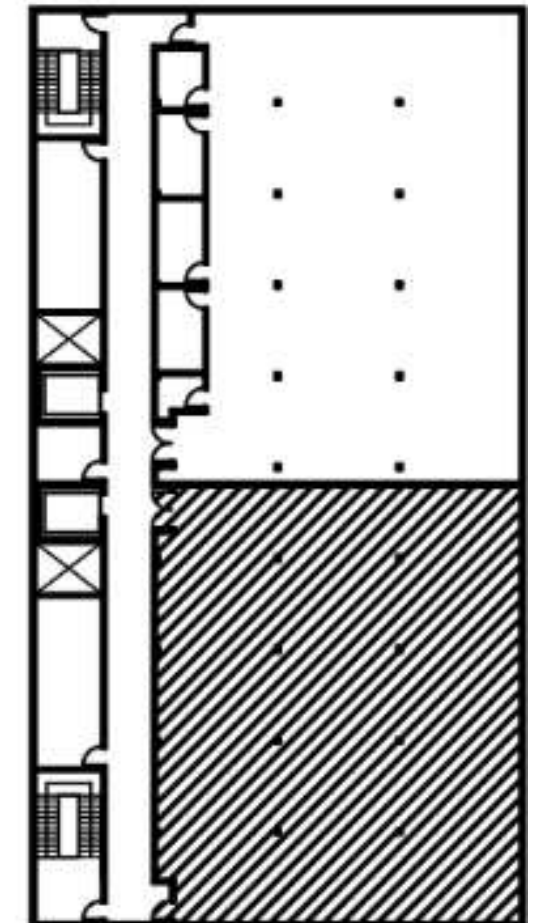
- Pritchard-Hughes Tobacco Building
Pitt and 11th Streets
Greenville NC
- Erected: first quarter of the Twentieth Century
- Heavy timber construction
- Client to occupy tenant space on first and second floors



Building Exterior



1st Floor Tenant Area
4,280 Square Feet

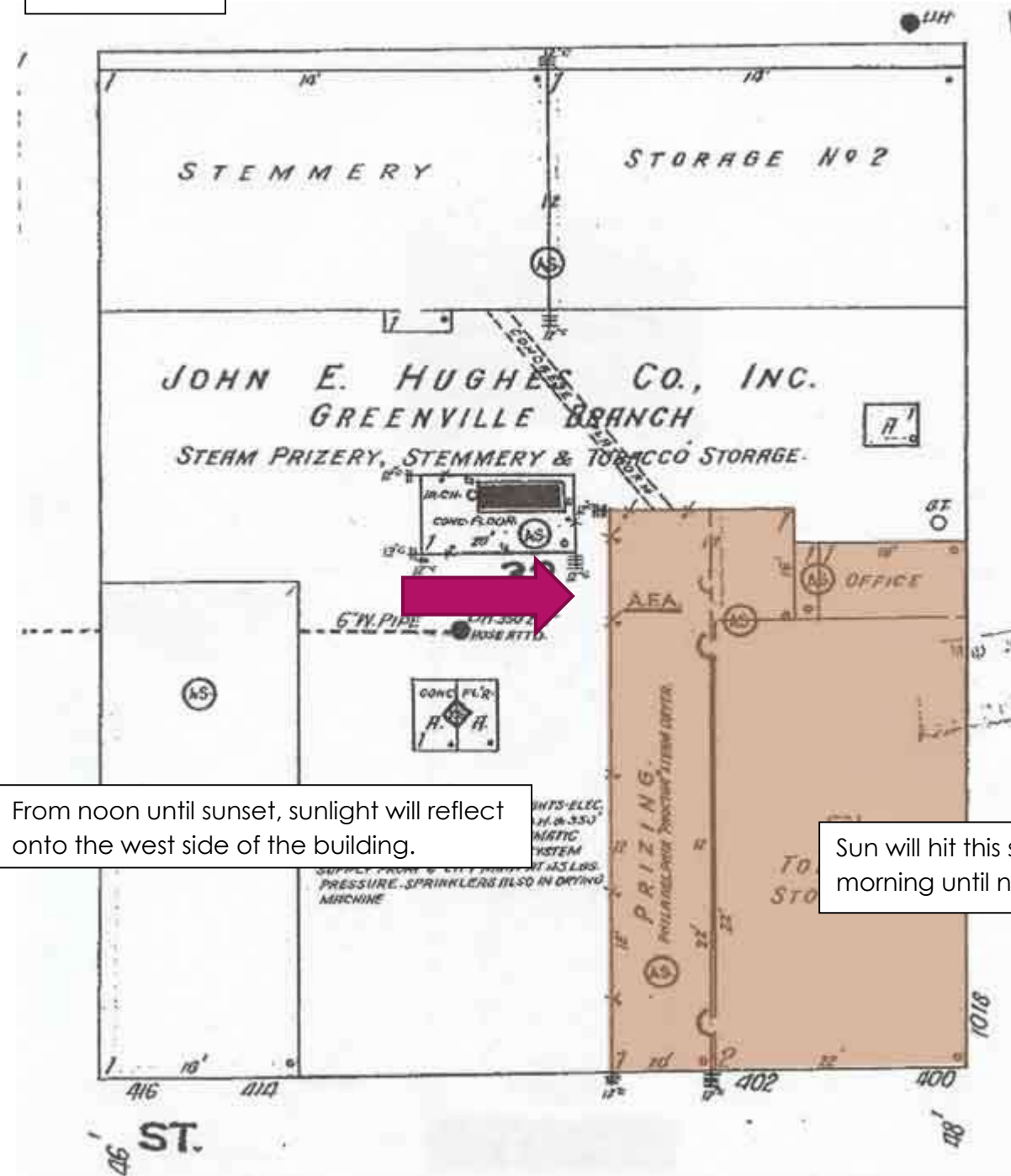


2nd Floor Tenant Area
4,280 Square Feet

Site Analysis



Block



From noon until sunset, sunlight will reflect onto the west side of the building.

Sun will hit this side of the building in the morning until noon.

Site Analysis: Neighborhood Views

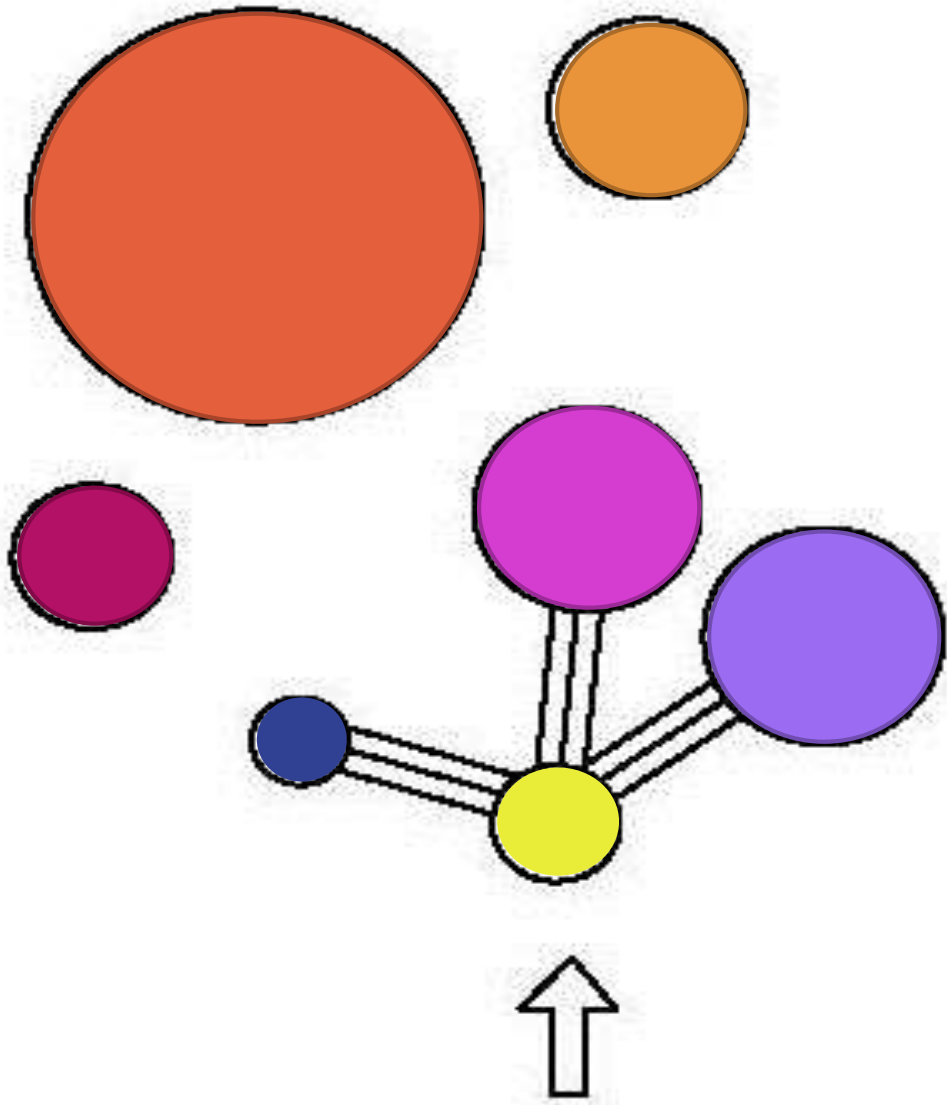


Research: History and Trends in Design for Workplaces

- **Early 1900's**
 - Early 1900's beginning of steel designs
 - Modern open plans
 - Production lines
 - Abundance of open space
- **1960's**
 - Getting away from topdown power to a more socially democratic layout, encouraging interaction and more human behavior
 - Bürolandschaft. A concept from Germany, translated as 'office-landscape'
 - It used organic groupings of desks and plants as partitions
- **1980's**
 - Began implementing privacy among the open spaces.
 - Cubicles gave into the closed off, private work area without renovating to rooms
 - Semi- closed off to keep open access.
- **2000's**
 - Rise of coffee shops and wireless technology
 - People adapted to not working always from an office
 - Expanded limitations
 - Wifi

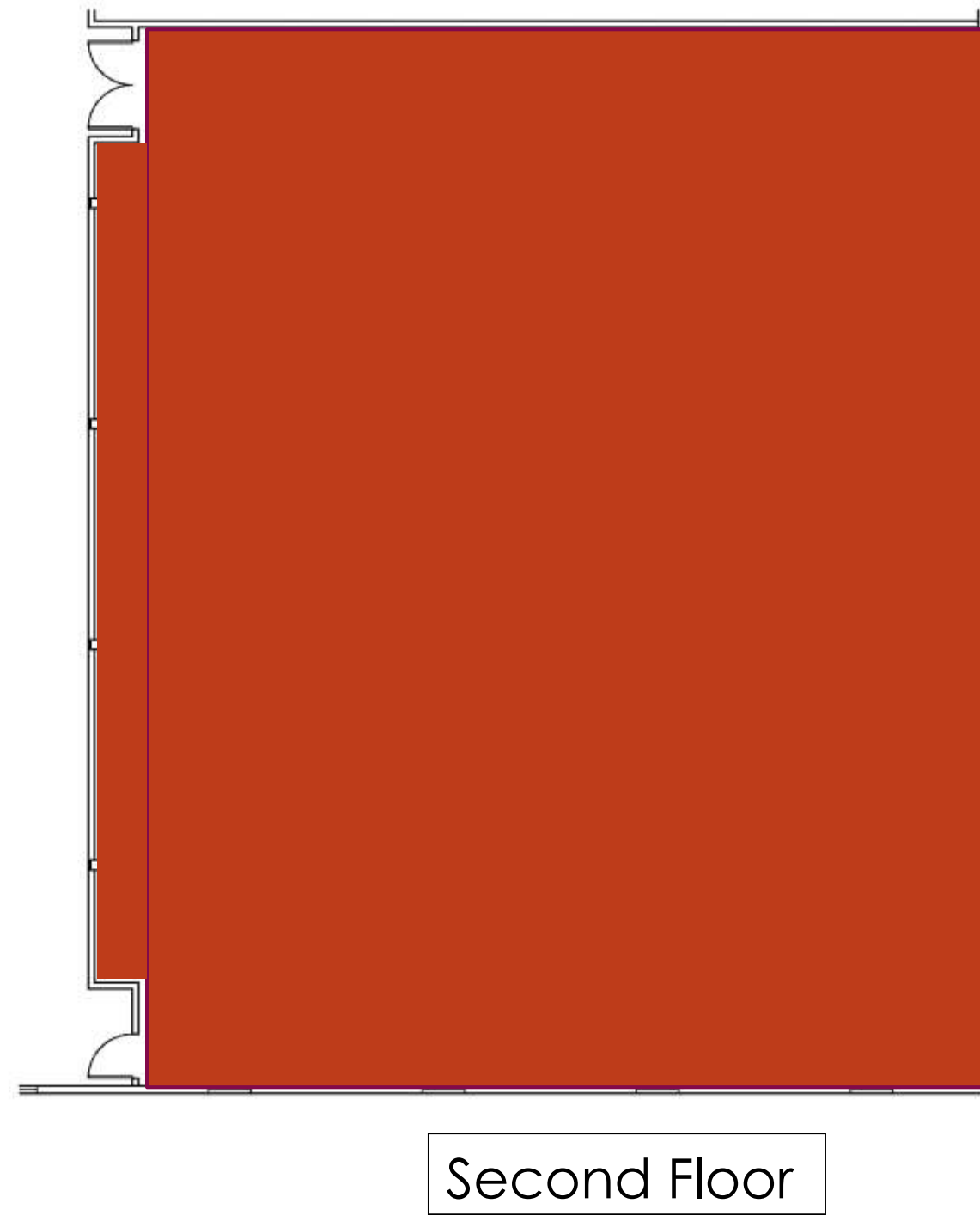
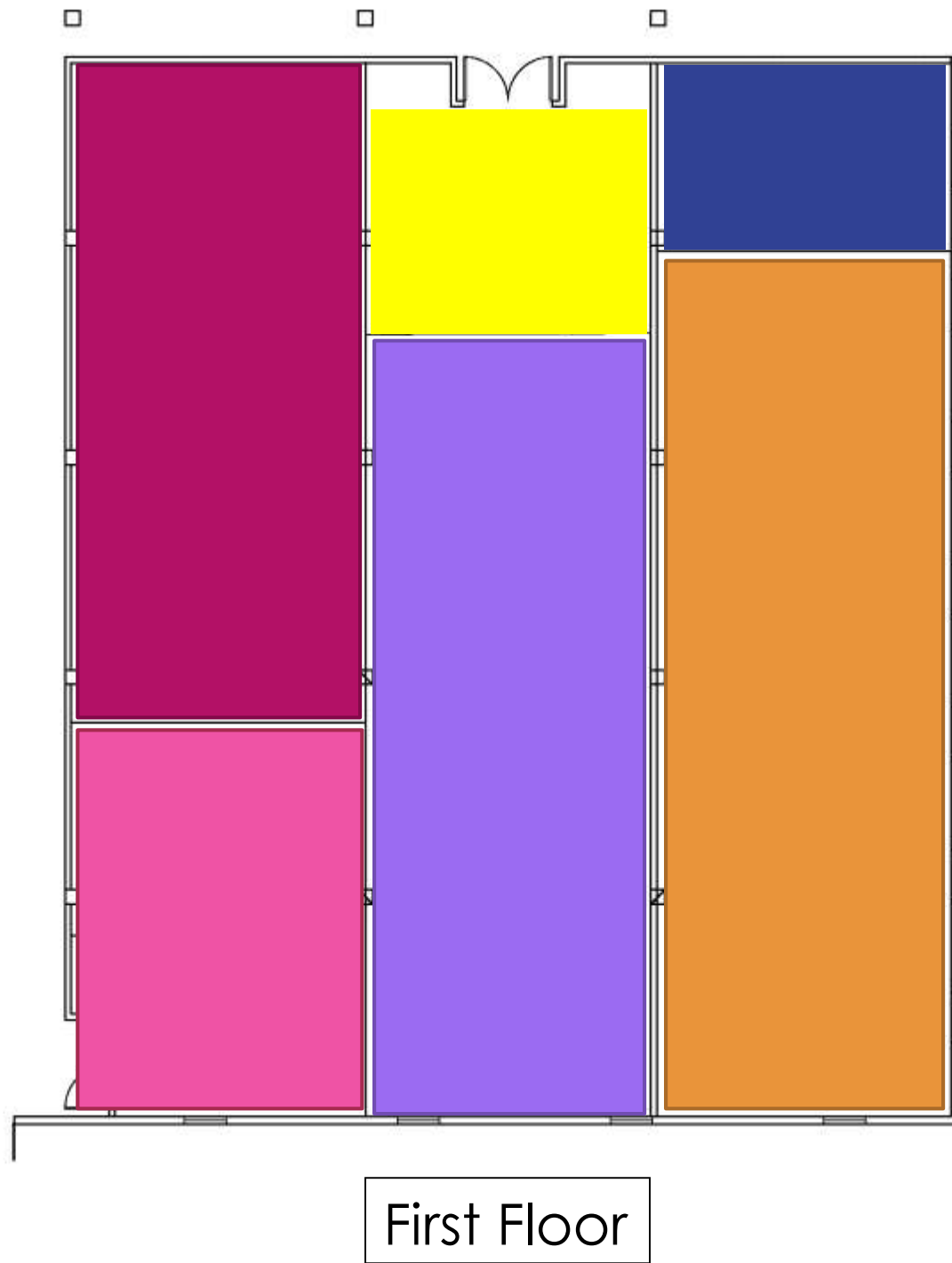


Bubble Diagram

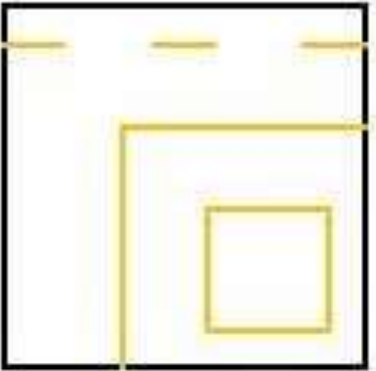


Key	
	Director/Assistant- 338.80 sq. ft.
	Reception/ Waiting Area- 462 sq. ft.
	Work Room/ Technicians- 862.40 sq. ft.
	Exhibition Space- 924 sq. ft.
	Large/Small Conference Room- 1170.40 sq. ft.
	Pantry/ Barista/ Storage- 523.6 sq. ft.
	Visiting Fellows/ Guest Research Station- 4472.16 sq. ft.

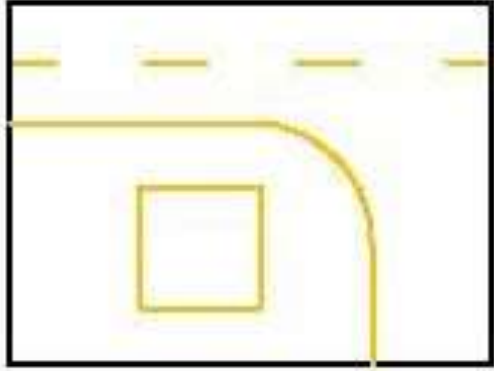
Blocking



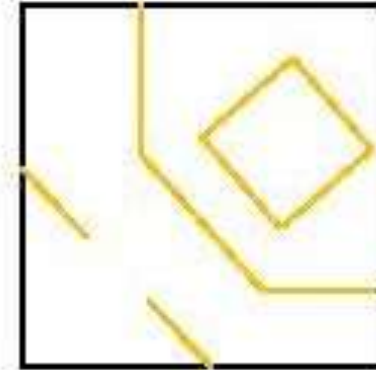
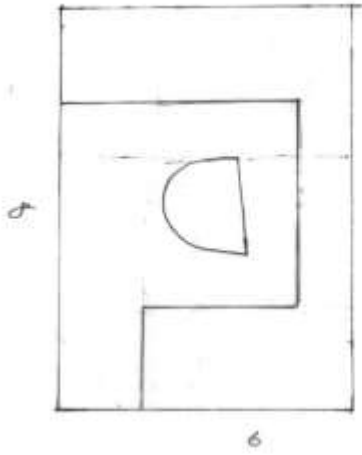
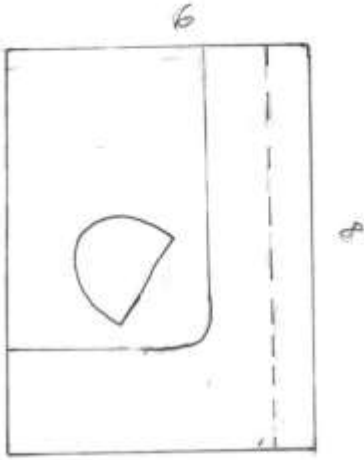
Space Standard Drawings



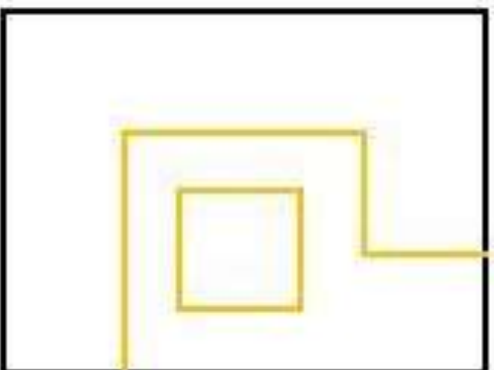
36 sq. ft. A



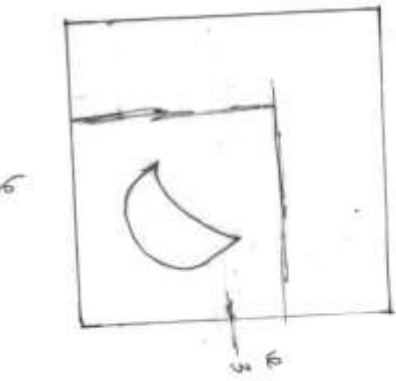
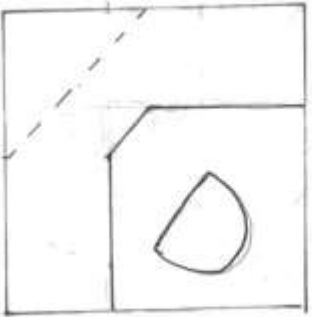
48 sq. ft. A



36 sq. ft. B

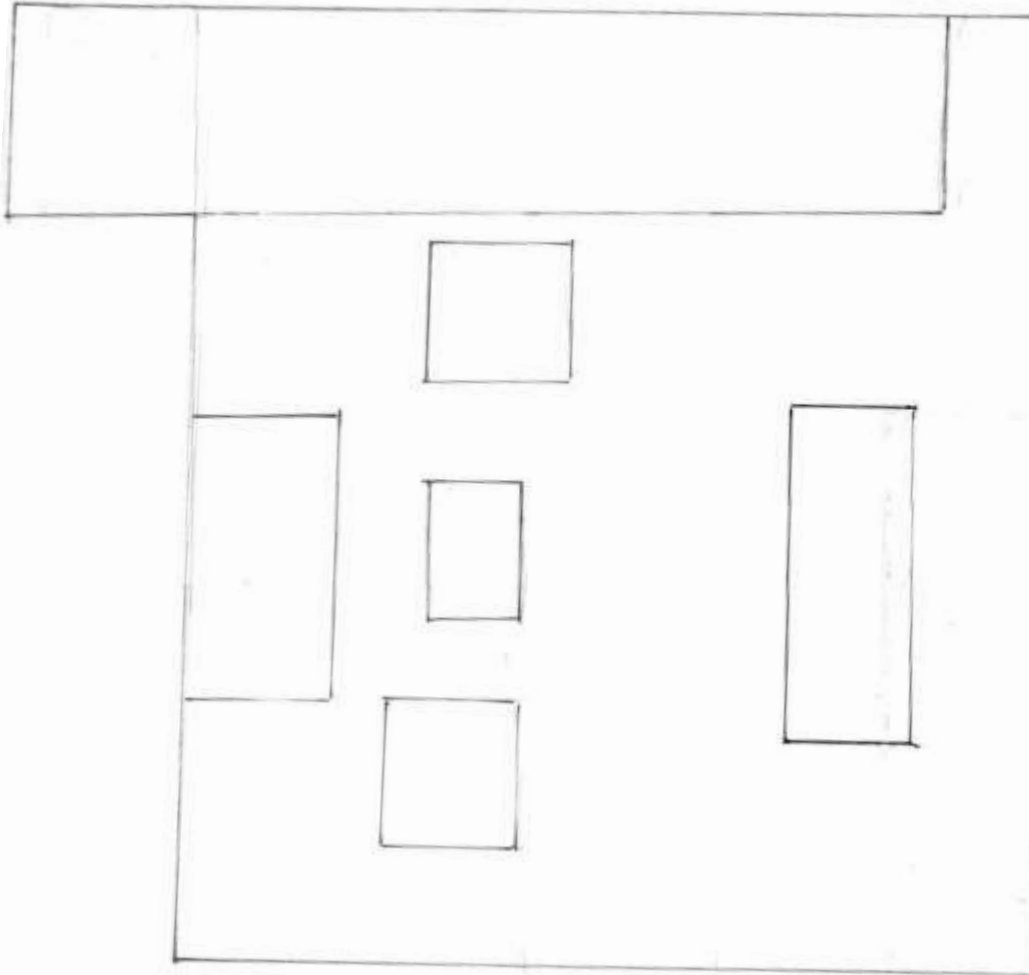


48 sq. ft. B

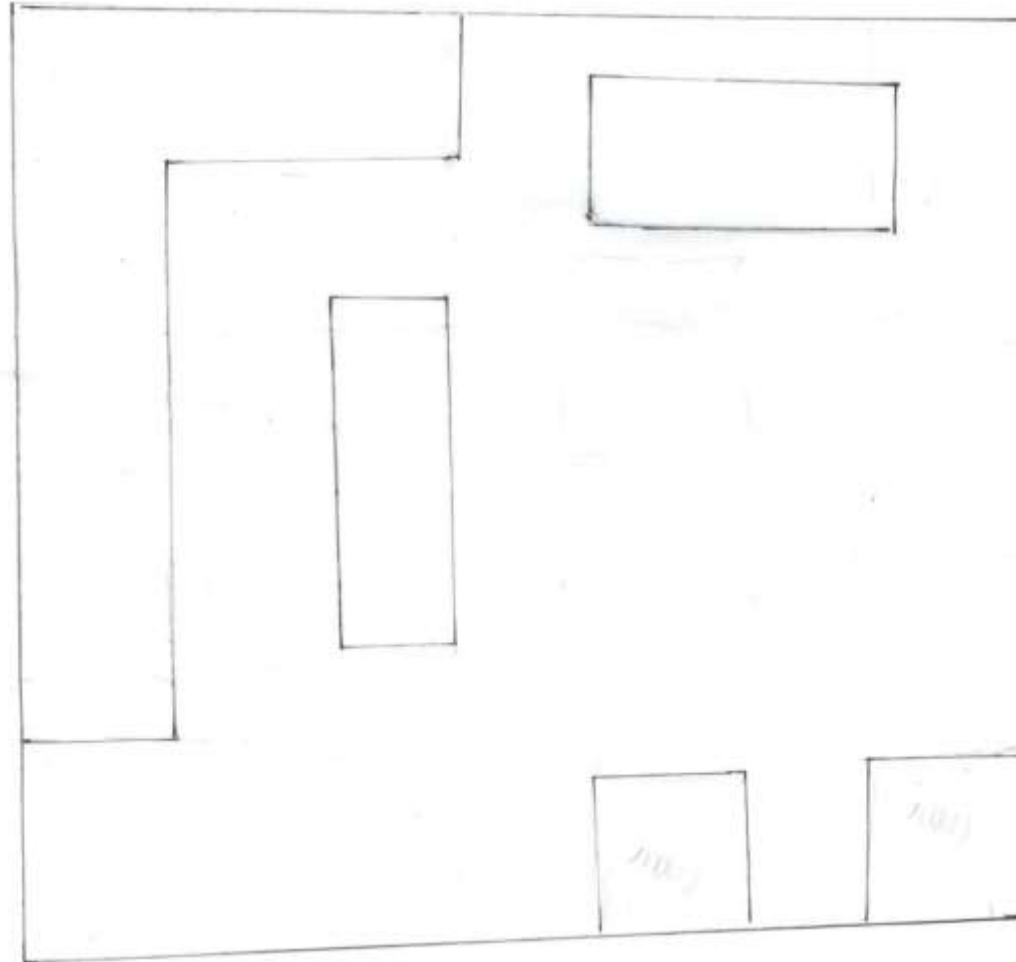


Plans

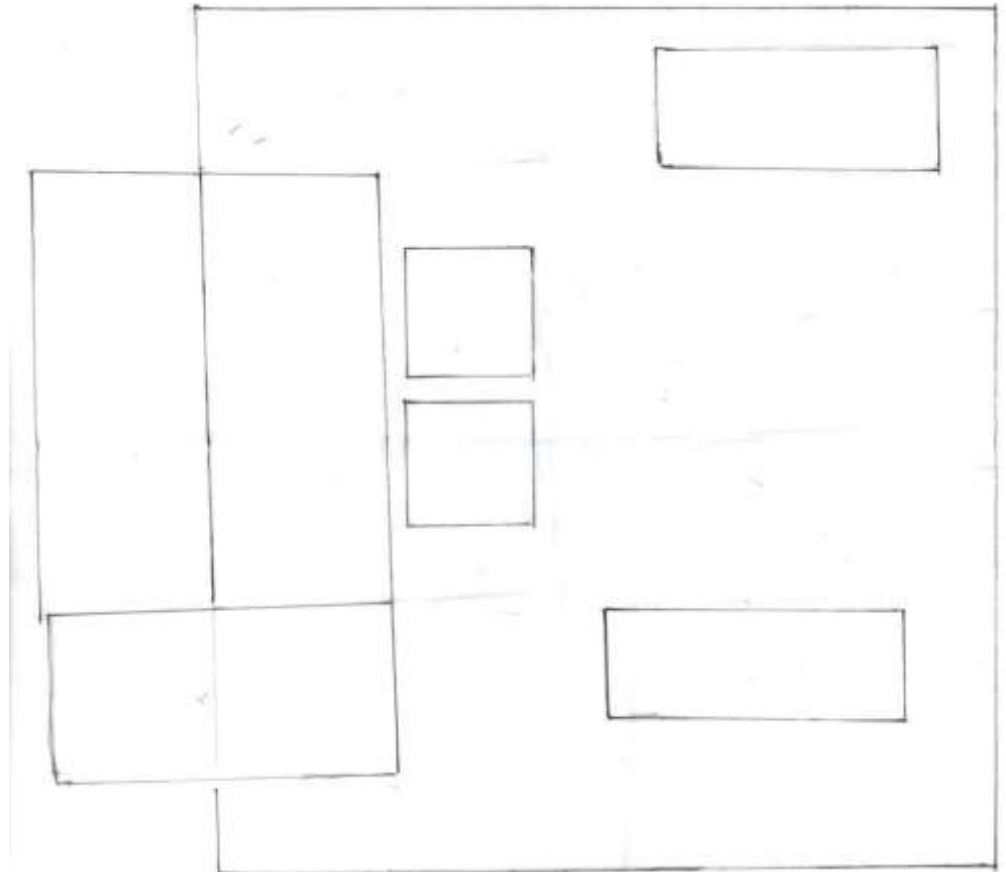
Straight- run Stair



L- Shaped Stair

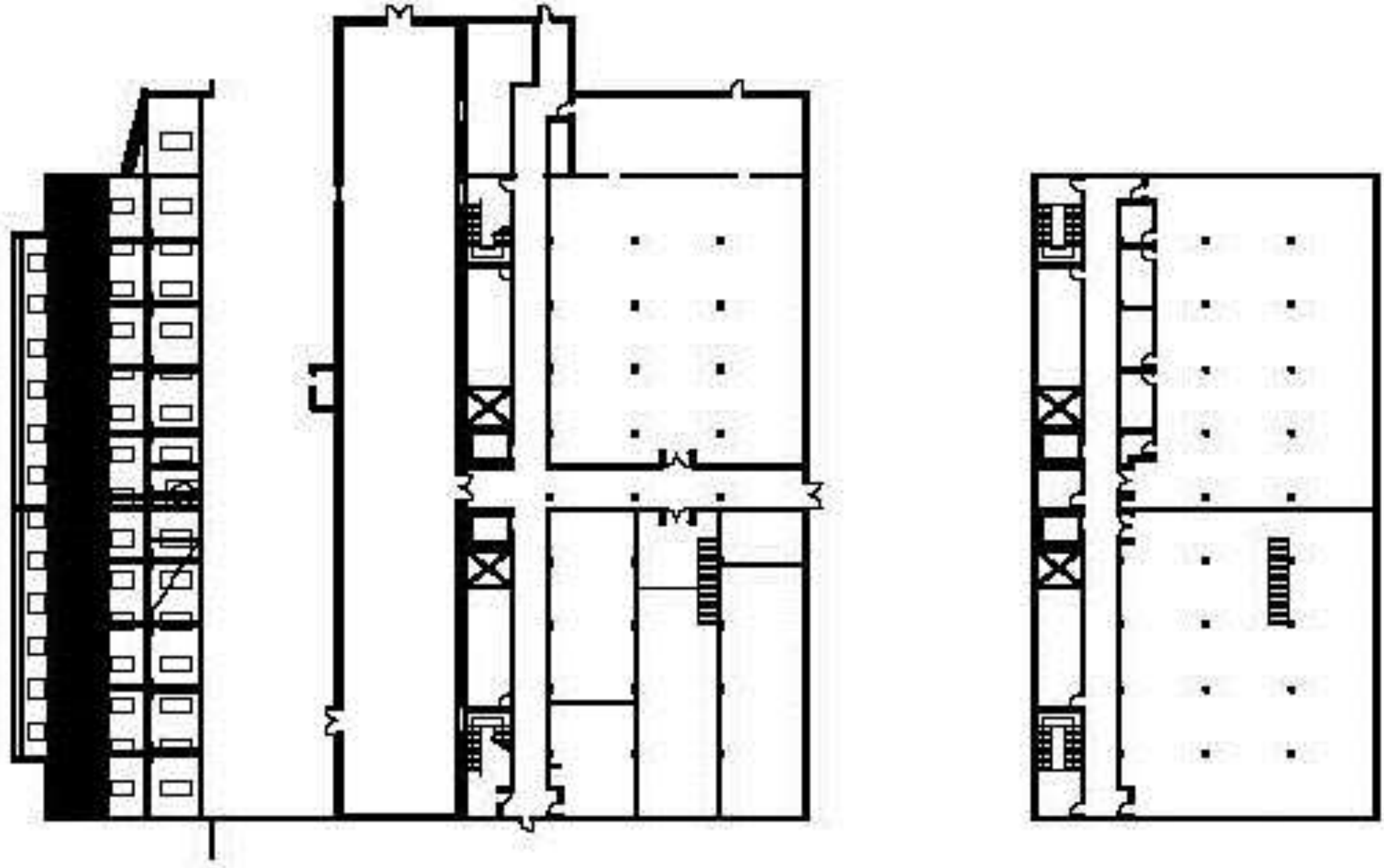


Scissor Stair



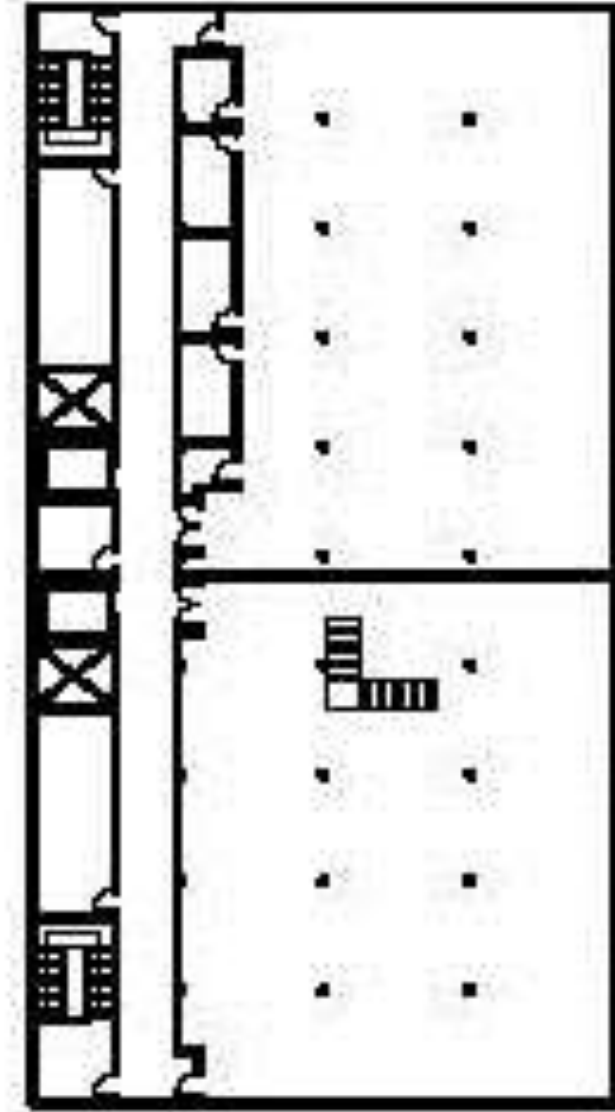
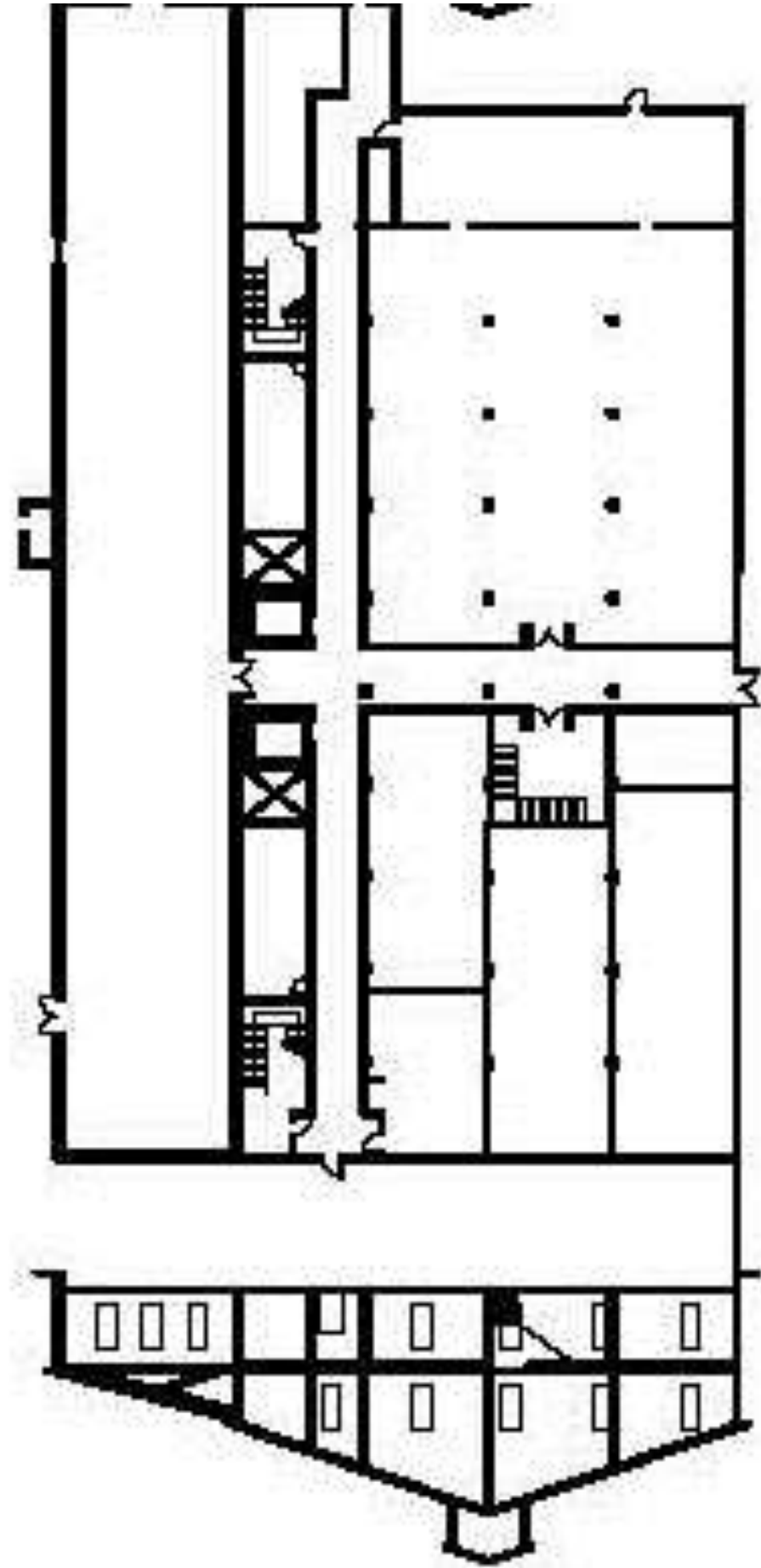
Sections

Straight Stair



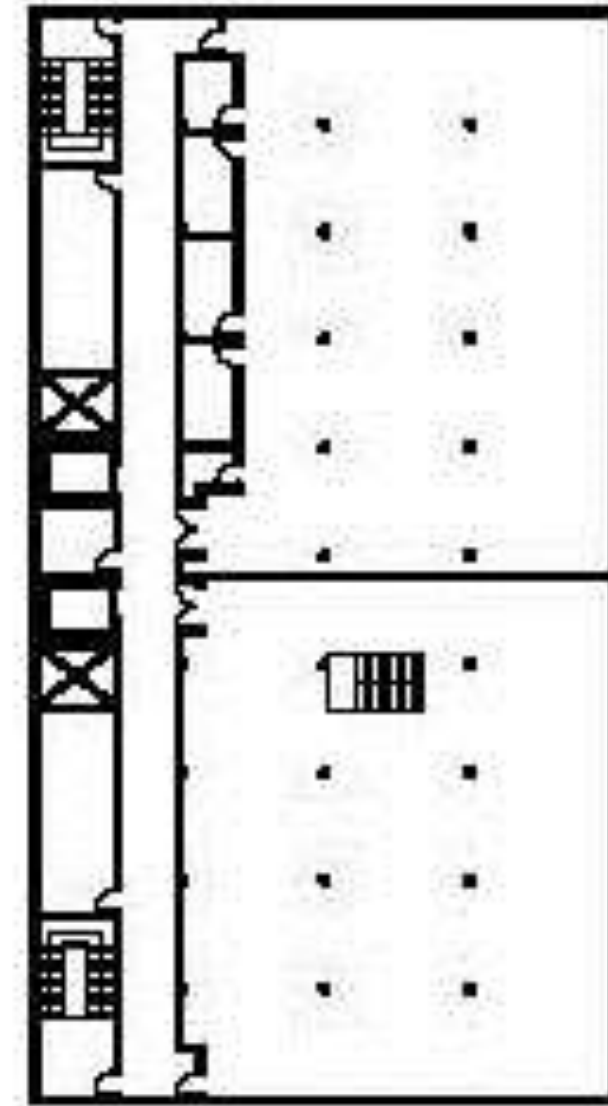
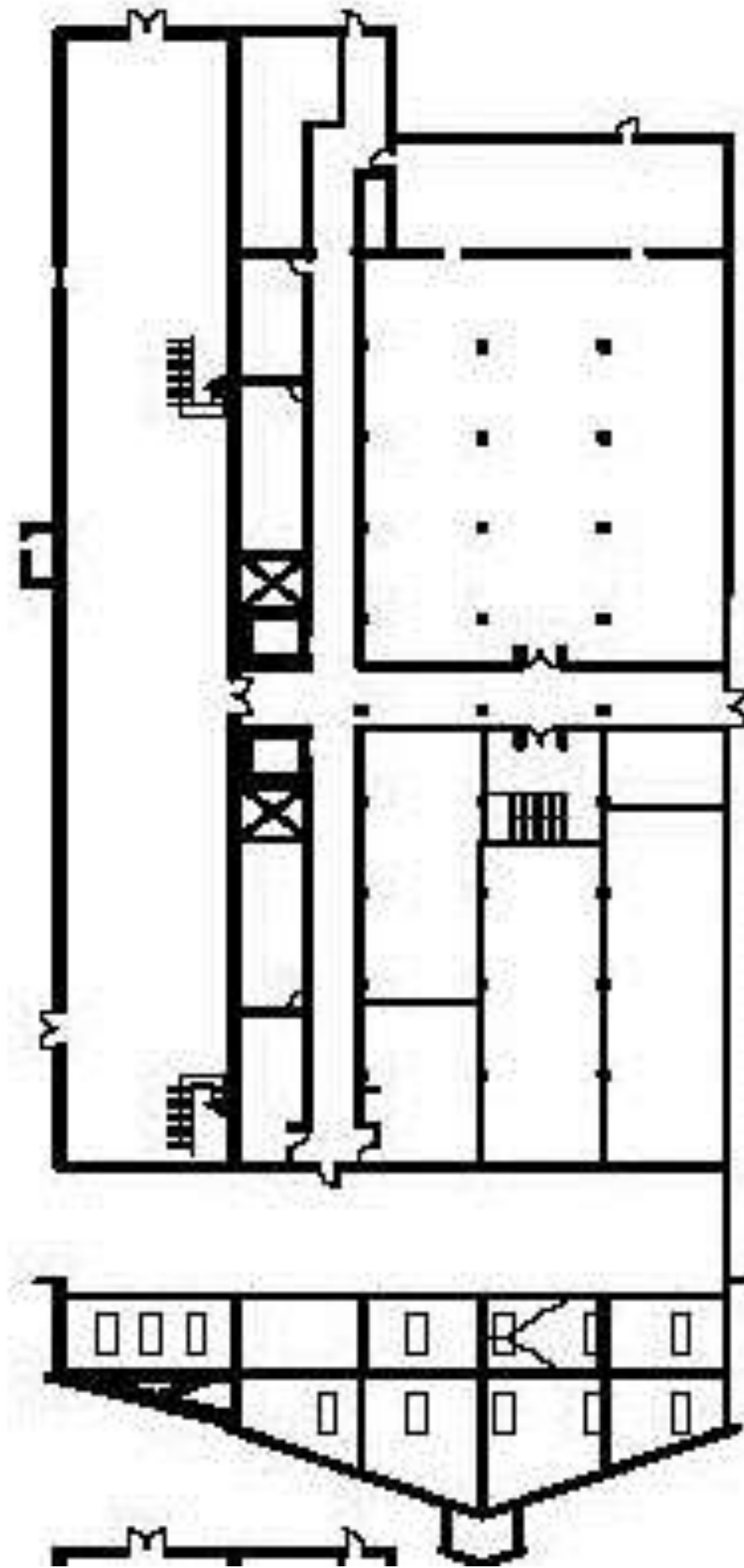
Sections

L- Shaped



Sections

Scissor Stairs



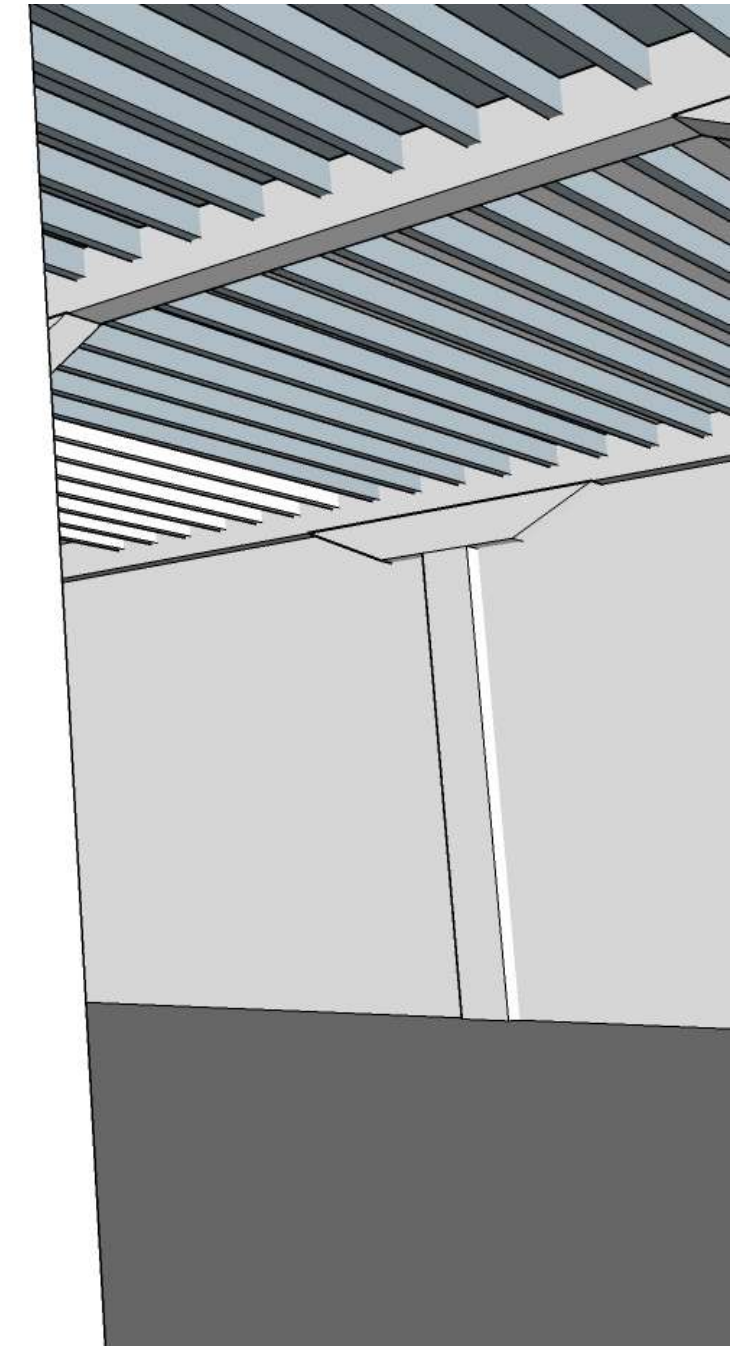
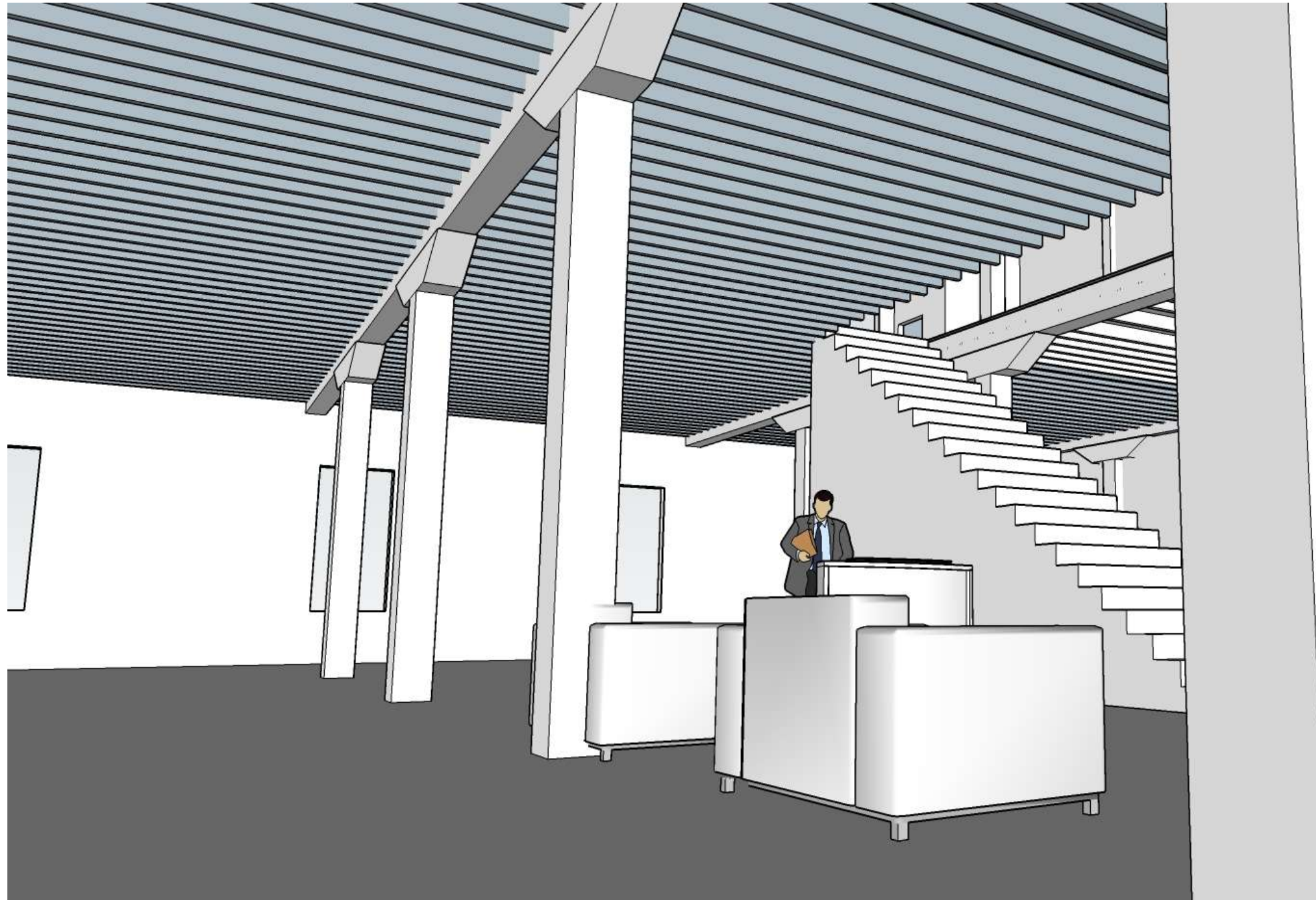
Perspectives

Straight-away Stair A



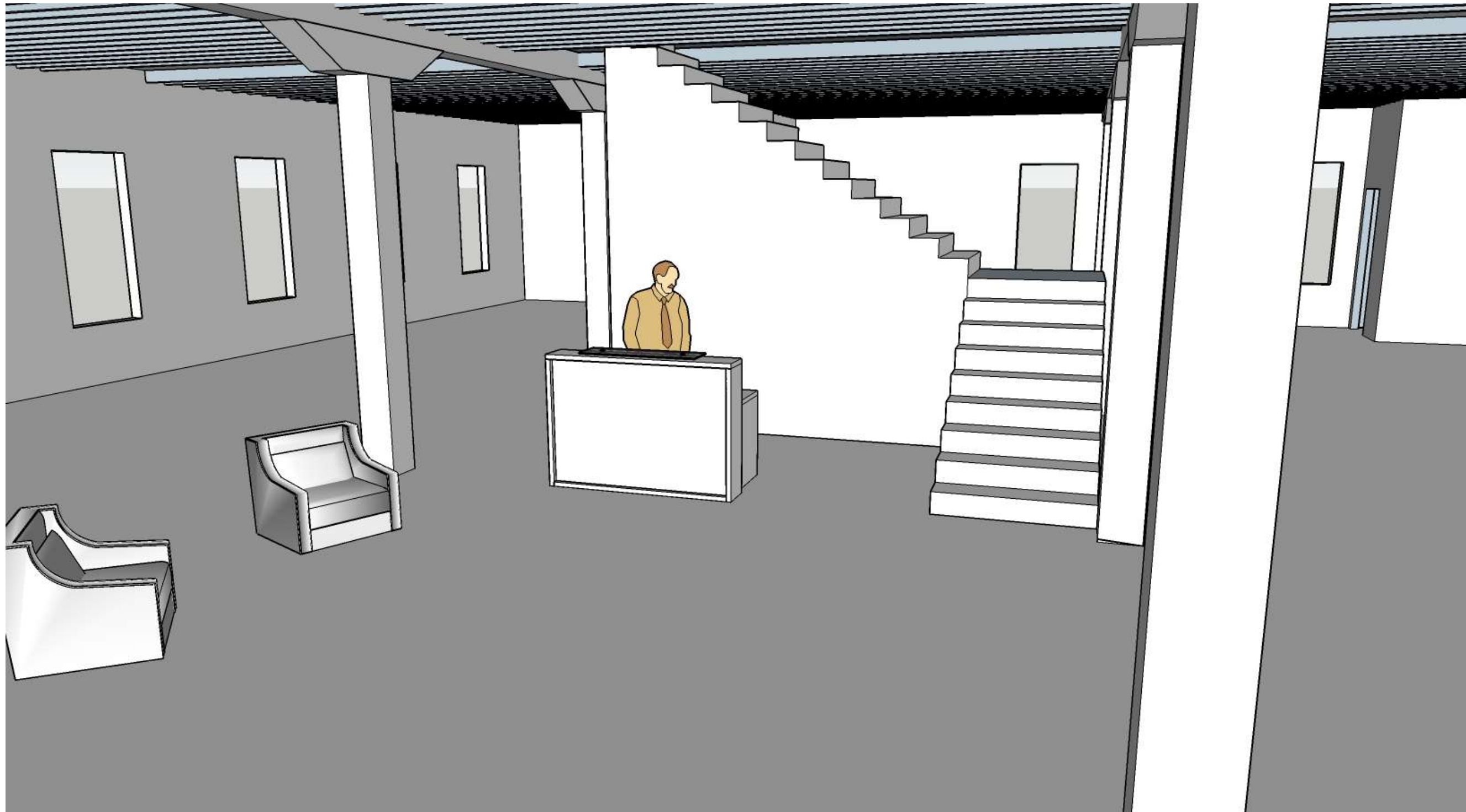
Perspectives

Straight-away Stair B



Perspectives

L- Shaped Stairs A



Perspectives

L-shaped Stairs B



Perspectives

Scissor Stairs A



Perspectives

Scissor Stairs B

