

Amanda Hill

Portfolio 1

Fall 2017

IDSN 2102

Client Profile

The Gateway Center is a resource center for exploring the design history of the coastal south. Located in Greenville NC, the Center is a partnership between the North Carolina Department of Natural and Cultural Resources and East Carolina University's Department of History, with major funding from the Golden LEAF Foundation.

This state-of-the-art facility allows visitors and scholars to research the rich history of the region, as evidenced by the implements and furnishings used by residents. Research published and programs conducted by the Center paint a detailed portrait of everyday life in the area

The Center includes:

- Visitor reception area
- Exhibition space
- Meeting rooms with full audio/video capabilities
- Facilities for researchers
- Documentation workroom



*Natural and
Cultural Resources*

Program Spreadsheet

Gateway Center

PERSONNEL

Position	Personnel Totals		Unit Square Ft.		Extended Sq. Feet	Equipment			Notes
	Current	Future	Office	Workstation		PC	Printer	Fax	
					0				
Director	0	1	120		120	1	1		
					0				
Administrative Assistant	0	1		100	100	1	1		Locate directly outside Dir office
					0				
Receptionist	0	1		0	0	1	1		Included in Reception/Waiting
					0				
Visiting Fellows	0	8		48	384	8			Locate away from Entry; 1 Shared printer
					0				
Guest Research Stations	0	70		36	2520				May be split up; 1 Shared printer
					0				
Technicians	0	2	100		200	4	2		Locate near Workroom
					0				
Barista	0	1			0				Included in Pantry
					0				
Personnel Totals:	0	84			3324	15	5	0	

Department Summary

Information:
 Personnel 3324 Square Ft.
 Support 2360 Square Ft.
Sub Total: 5684 Square Ft.
 Circulation 1.54
Total Carpetable: 8753.36 Square Ft.

Interviewee:

Interview Date:
 Revision Submitted:
 Sign Off: _____

SUPPORT SPACES

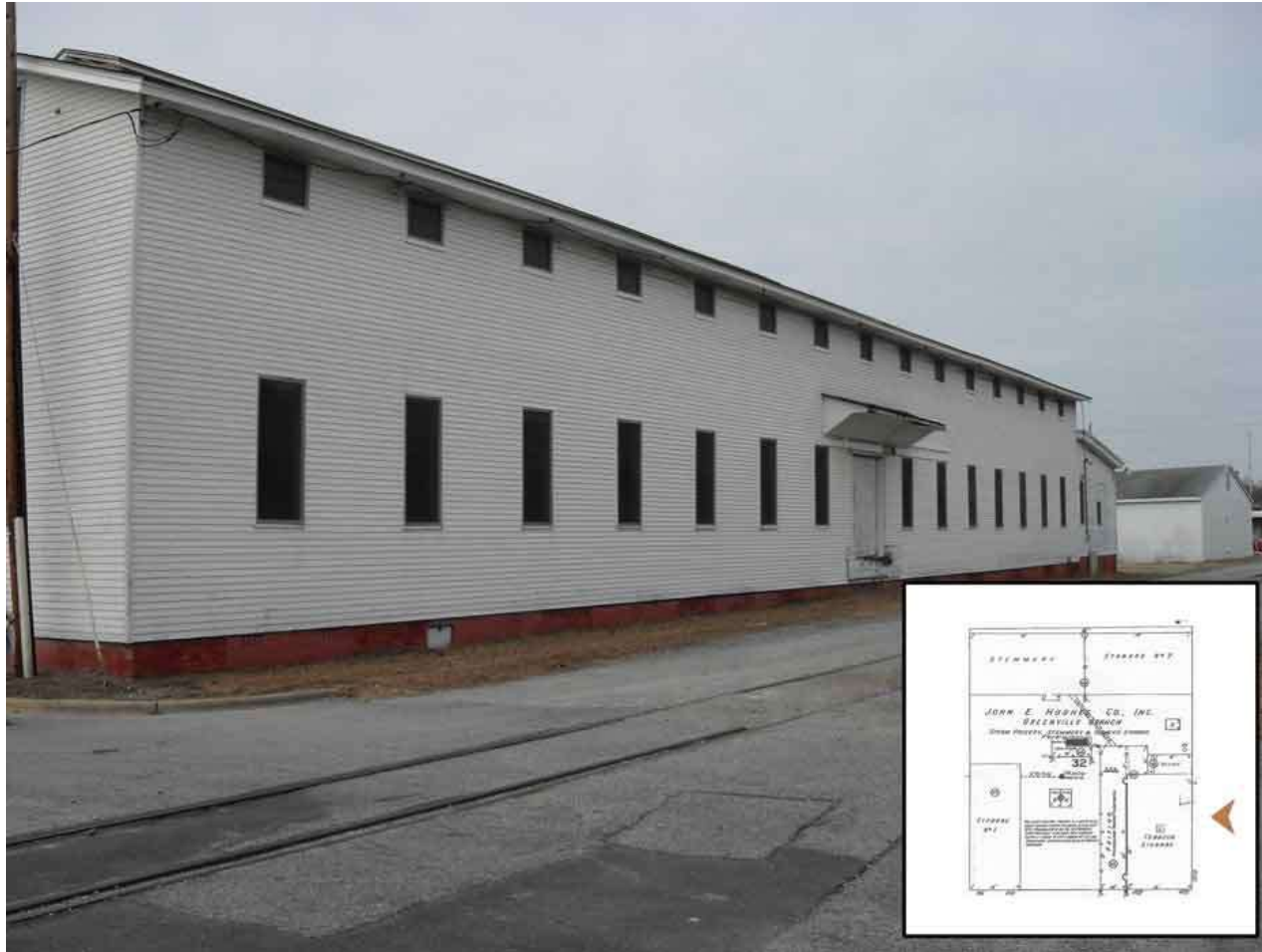
Space	Support/Equipment		Unit Square Feet	Extended Sq. Feet	Location	Notes
	Current	Future				
				0		
Reception/Waiting Area	0	1		300	Inside main entry; Visible from Admin Asst	Seating for 4 guests
				0		
Large Conference Room	0	1		400	Close to main entry	Seating for 14 at table, 6 at side; Full A/V
				0		
Small Conference Room	0	3		120	Adjacent to Large Conference	Seating for 4-6; Full A/V
				0		
Workroom	0	1		360	Locate away from Entry	Counter space and work tables
				0		
Storage	0	1		100	May be split and scattered through the space	
				0		
Pantry	0	1		240		
				0		
Exhibition Space	0	1		600	Close to main entry	Some walls for hanging work
Support Totals:				2360		

Department Notes:

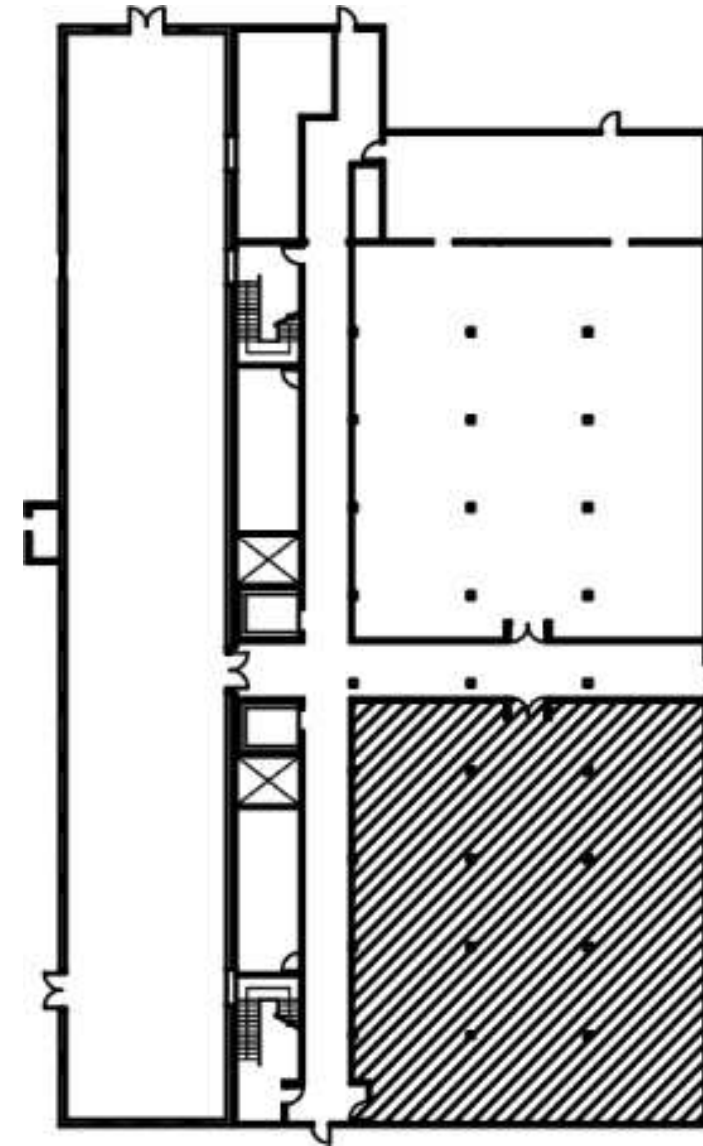
Historic character important to users
 Space must be flexible

Site Profile

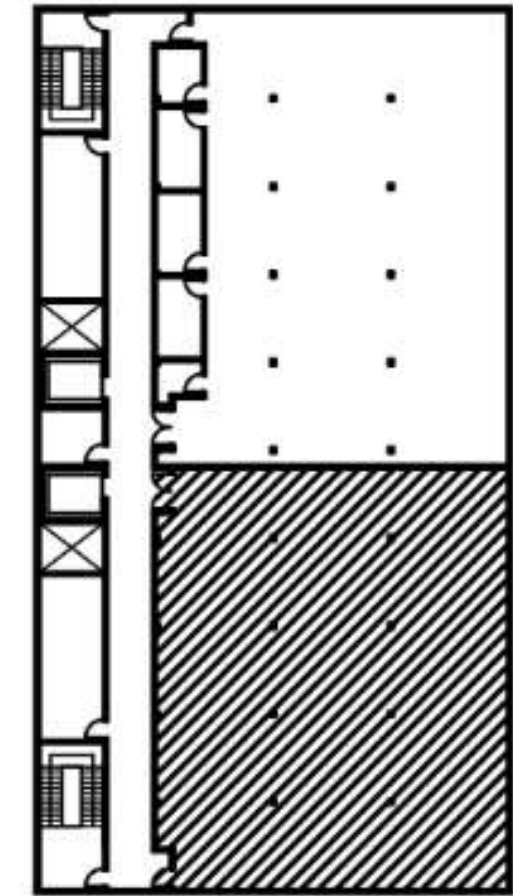
- Pritchard-Hughes Tobacco Building
Pitt and 11th Streets
Greenville NC
- Erected: first quarter of the
Twentieth Century
- Heavy timber construction
- Client to occupy tenant space on first
and second floors



Building Exterior



1st Floor Tenant Area
4,280 Square Feet



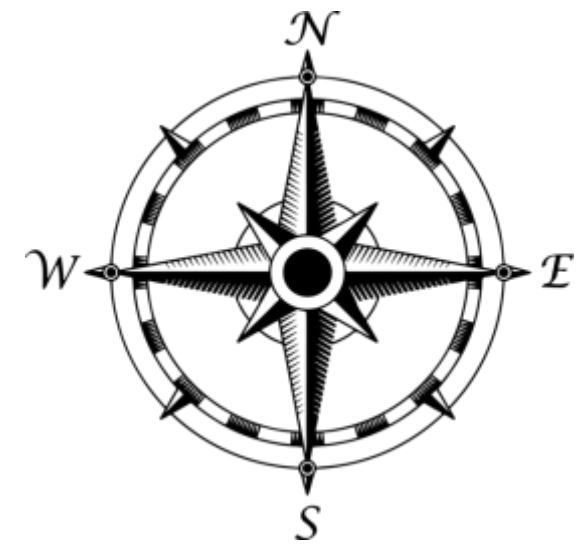
2nd Floor Tenant Area
4,280 Square Feet

Site Analysis



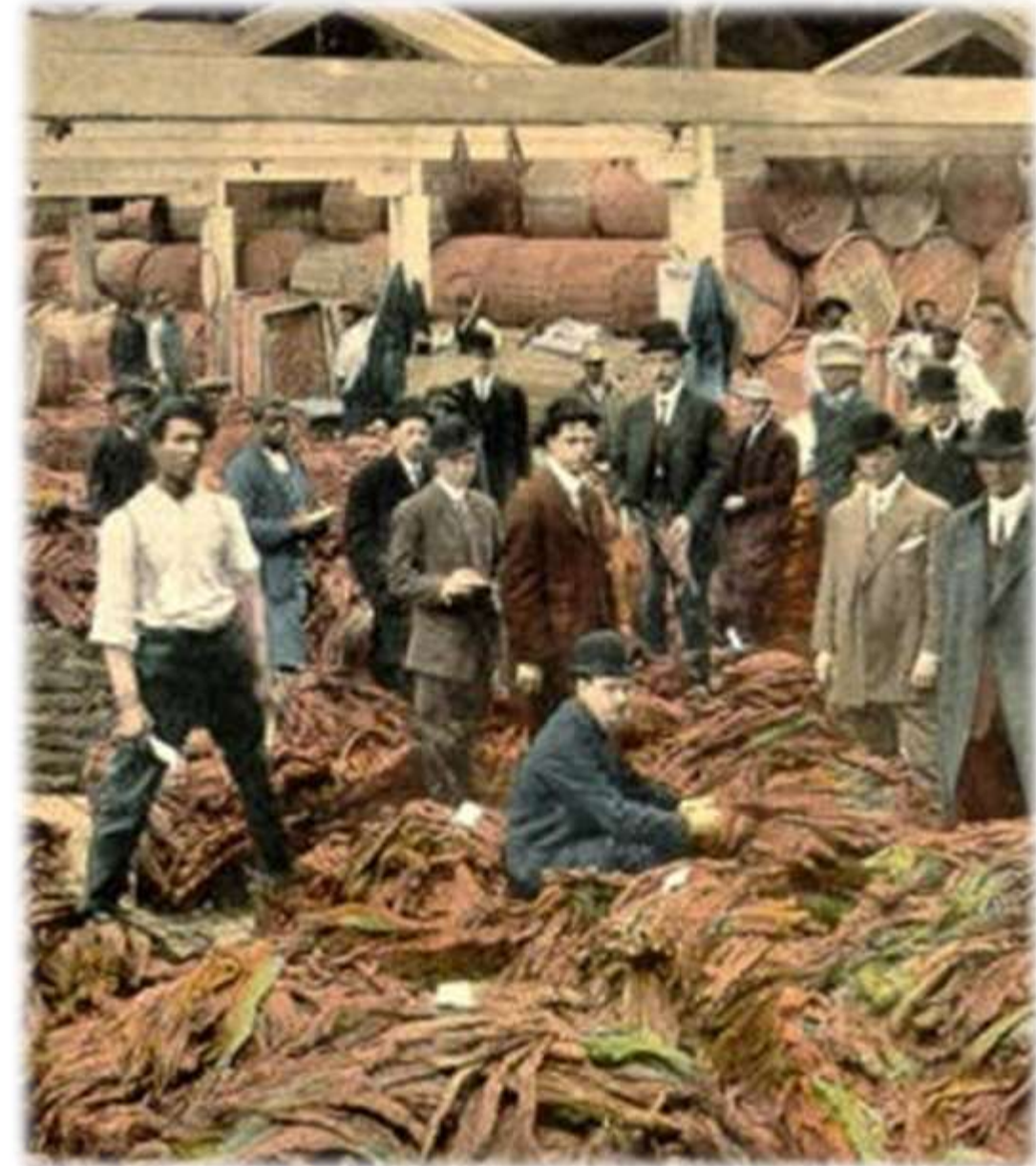
Daylight:

- North-no direct light
- South-continuous light
- East-morning light
- West-afternoon light

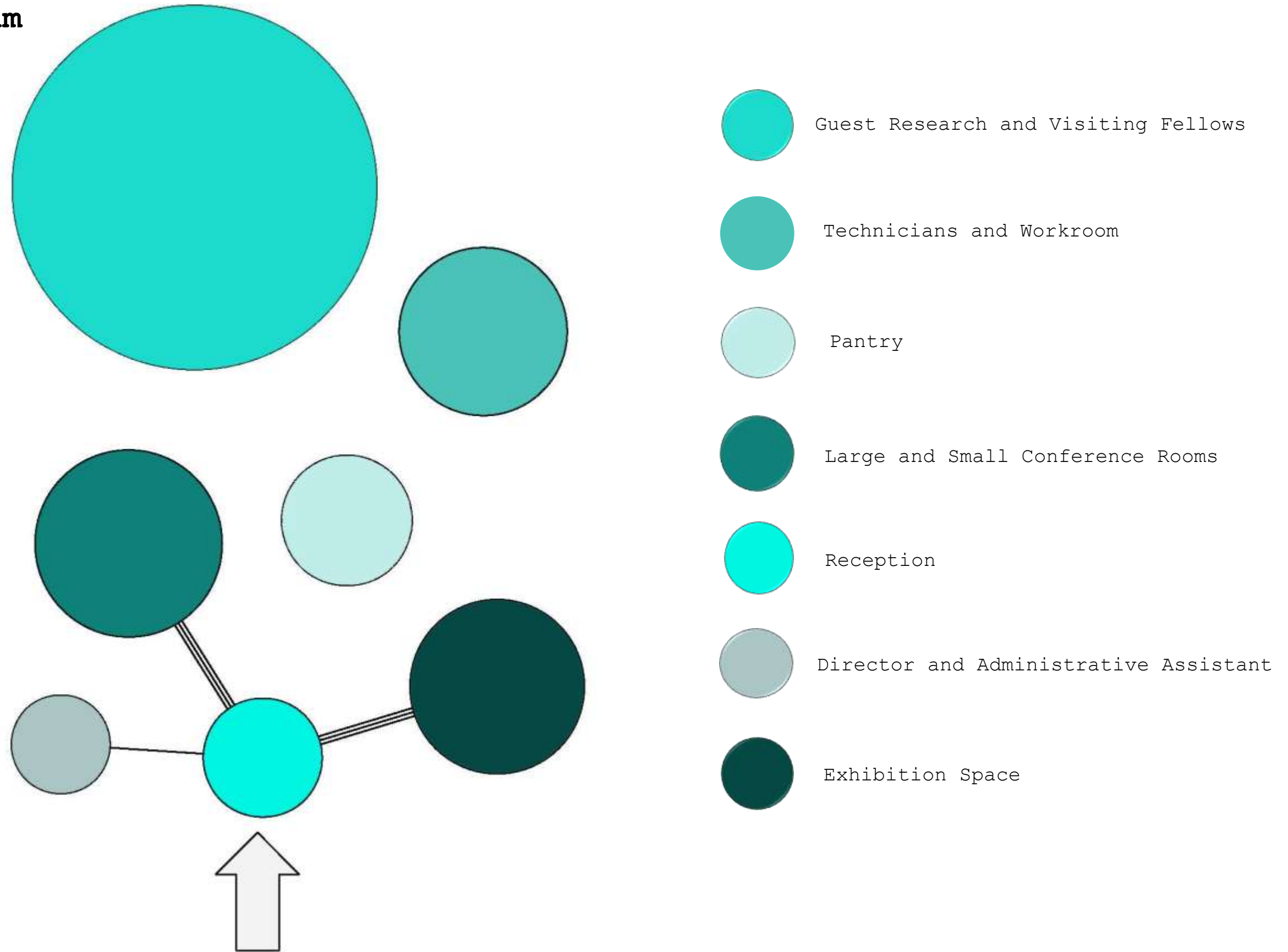


Research

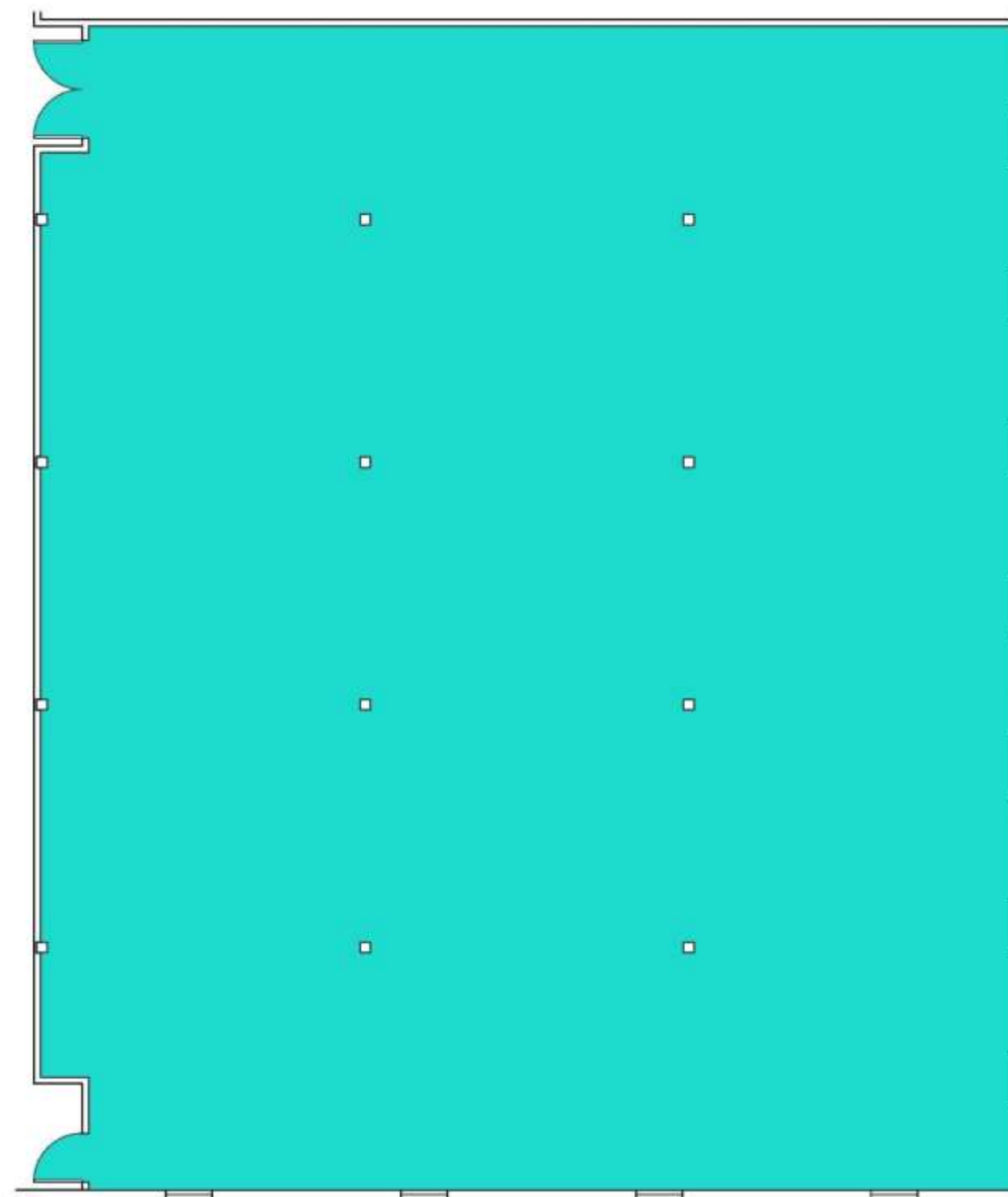
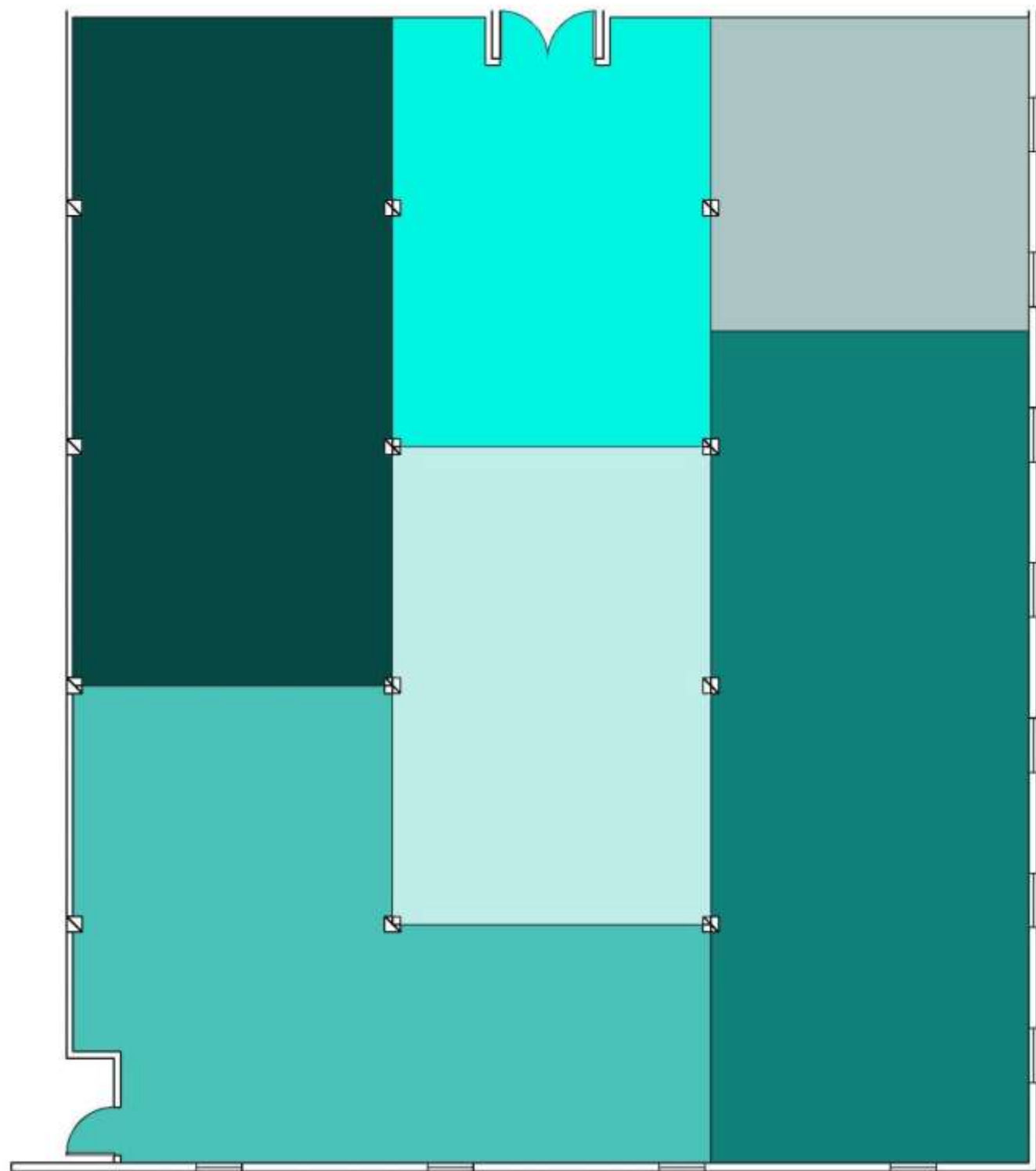
- Built in 1905 with addition in 1923
- Warehouse District period of significance: 1905-1947
- Architectural classification: Industrial Italianate and Art Deco (National Register of Historic Places Registration Form)
- Materials: brick, concrete block, asphalt, metal, tile, and synthetics
- The Hughes Warehouse was constructed in the early 20th century when Greenville rose to prominence as a major marketing and processing center for flue-cured tobacco.
- Consisted of thick plank or concrete floors and heavy timber supports
- ECU is considering this piece of land for its future Millennial Campus
- The Hughes Warehouse was smaller and more simply than other buildings in the district because it was mainly used for storage space and aging tobacco.



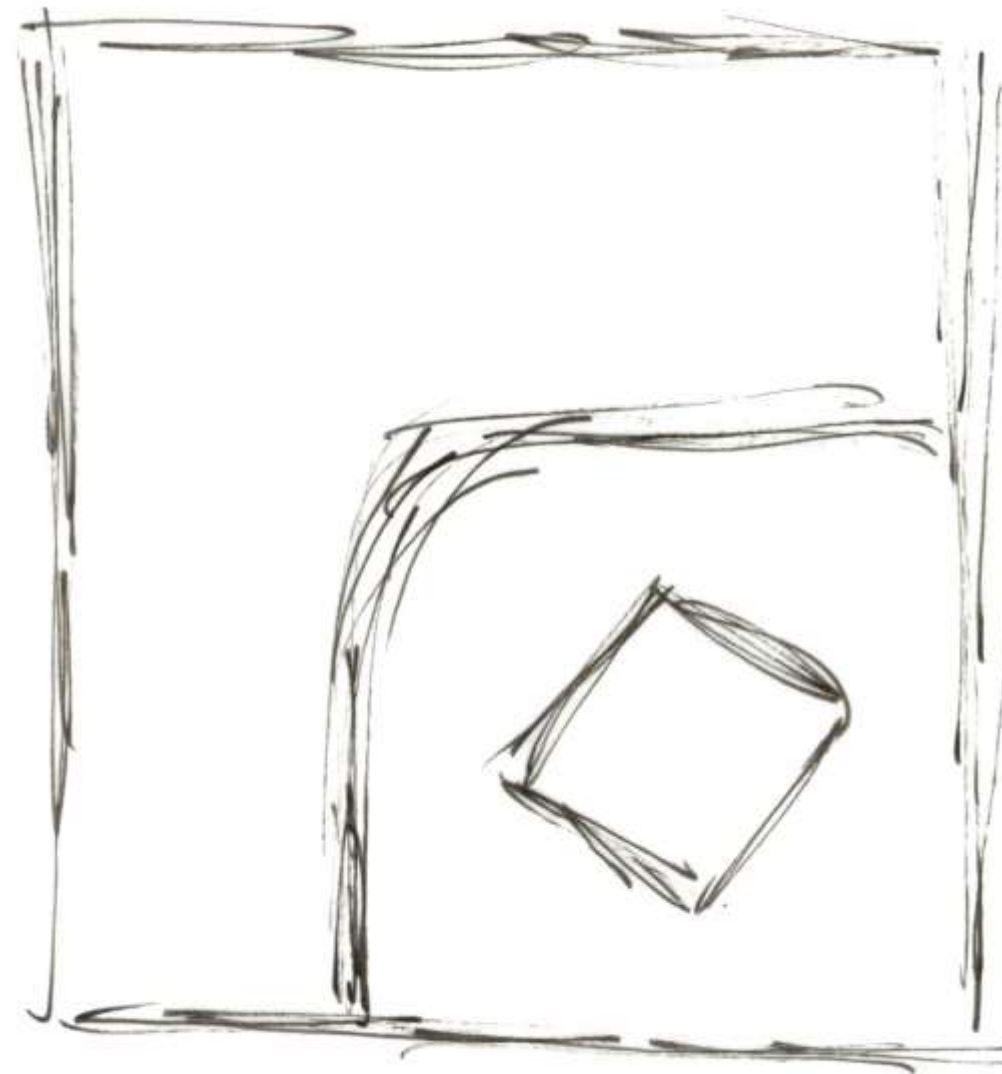
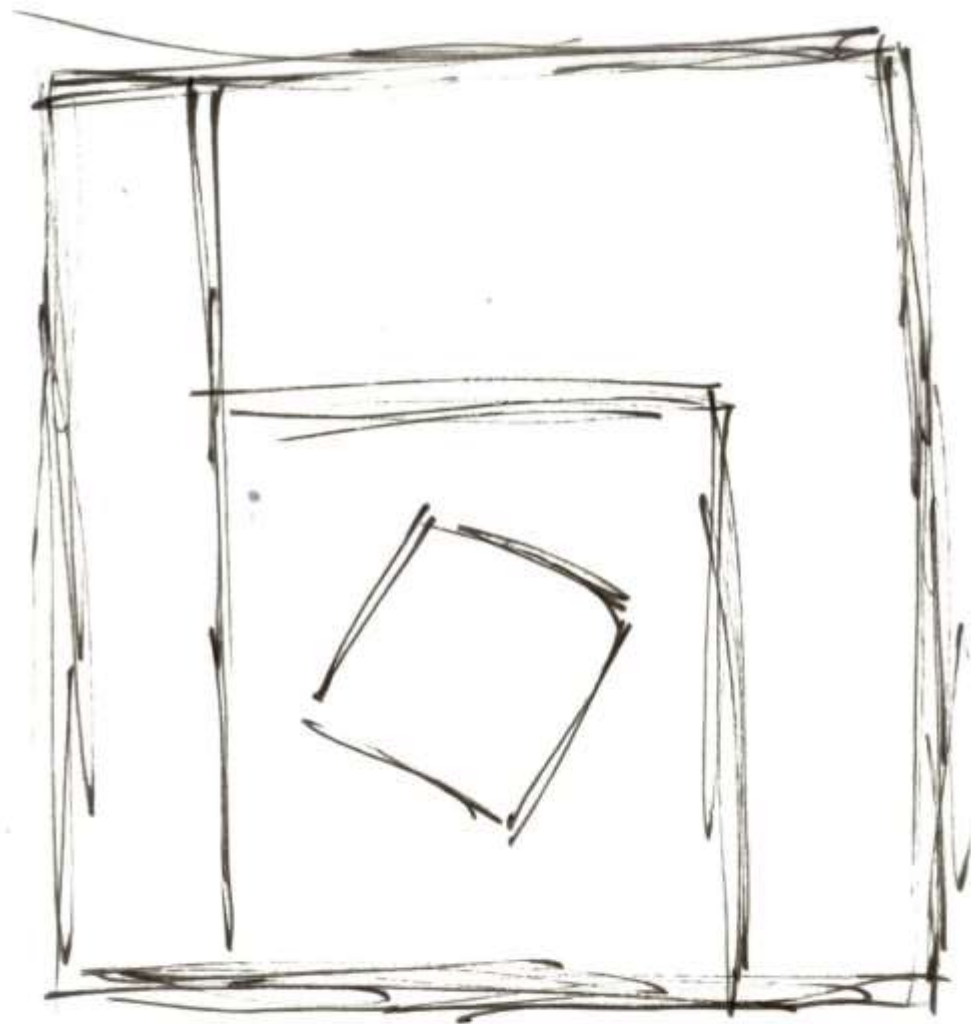
Bubble Diagram



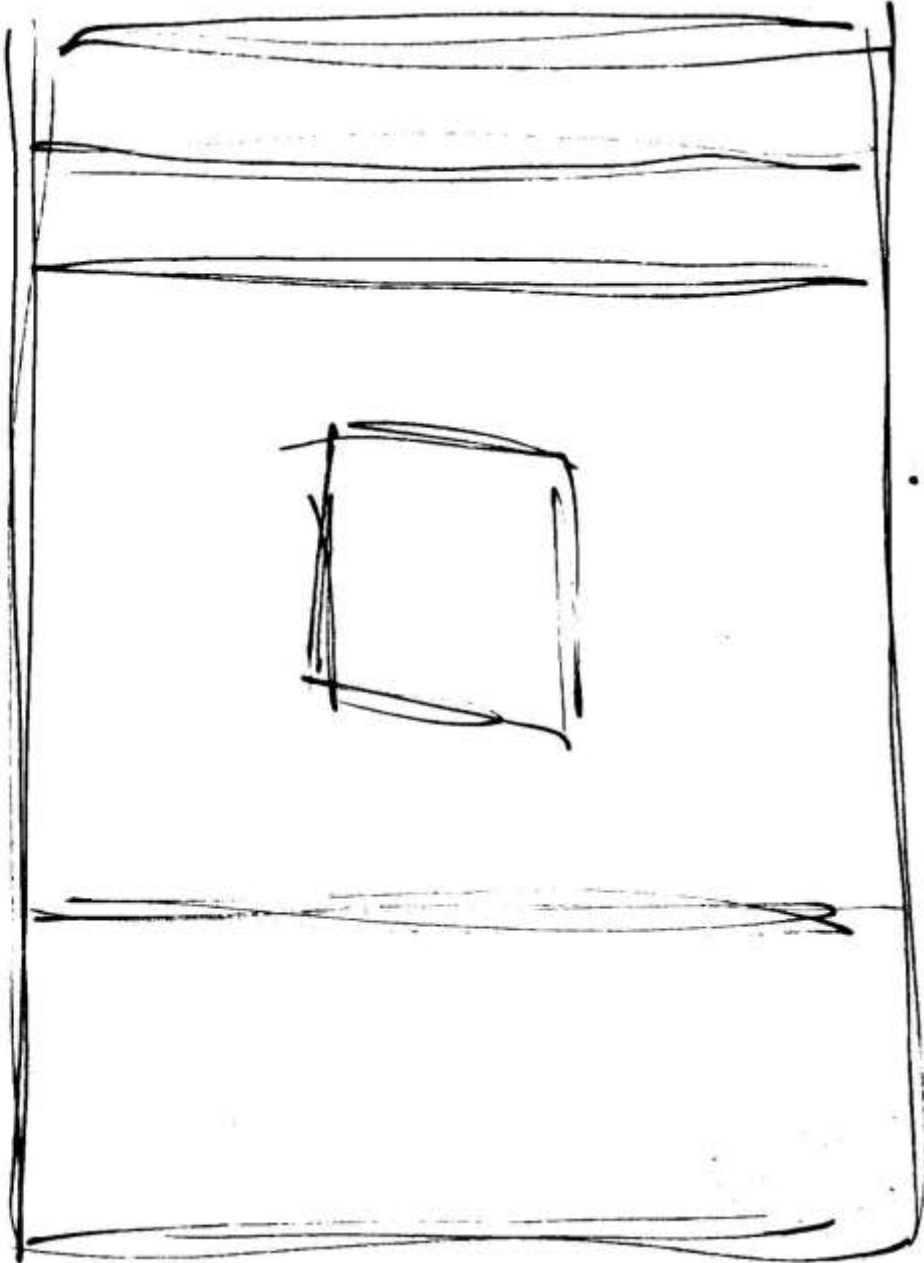
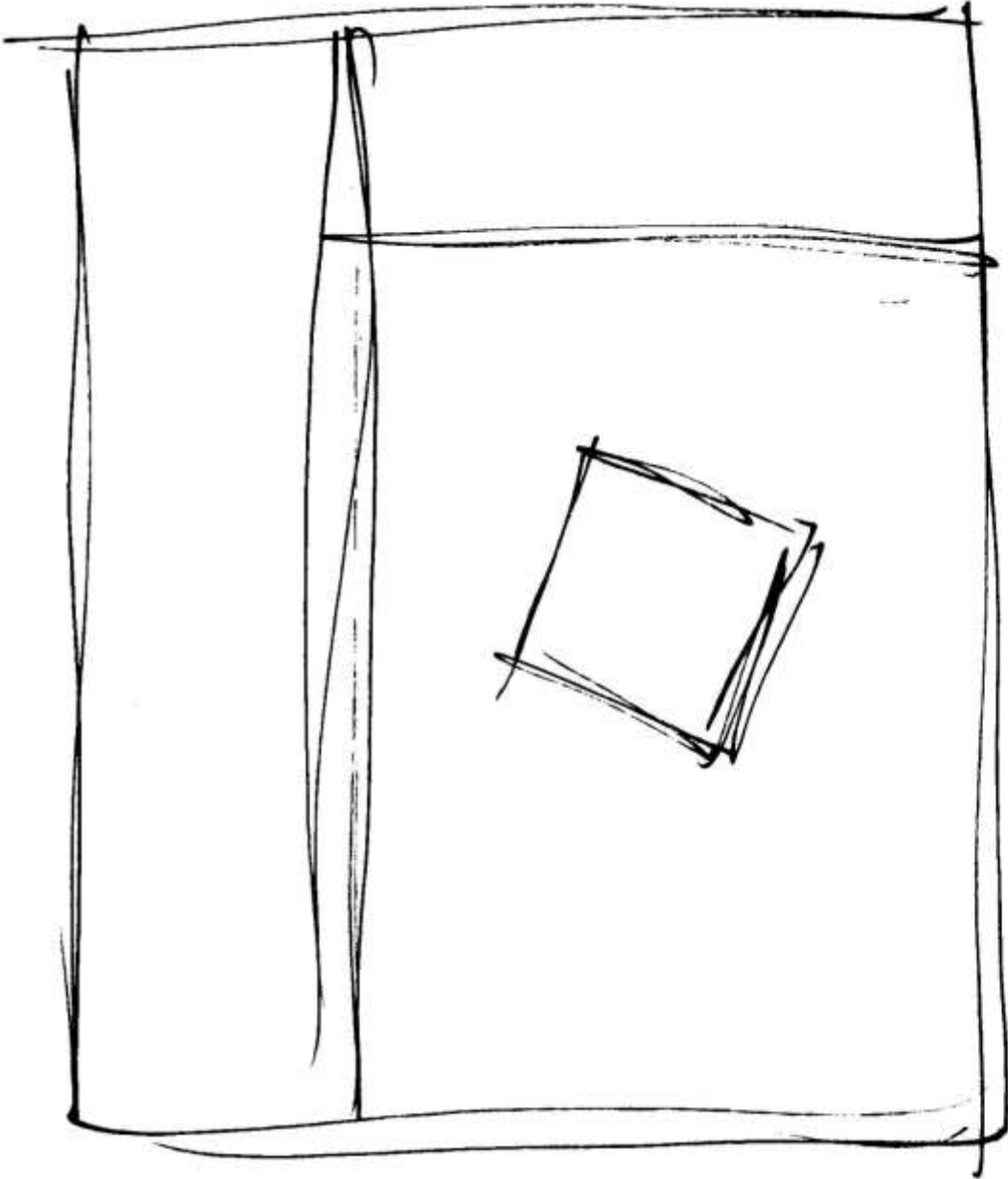
Blocking Diagram



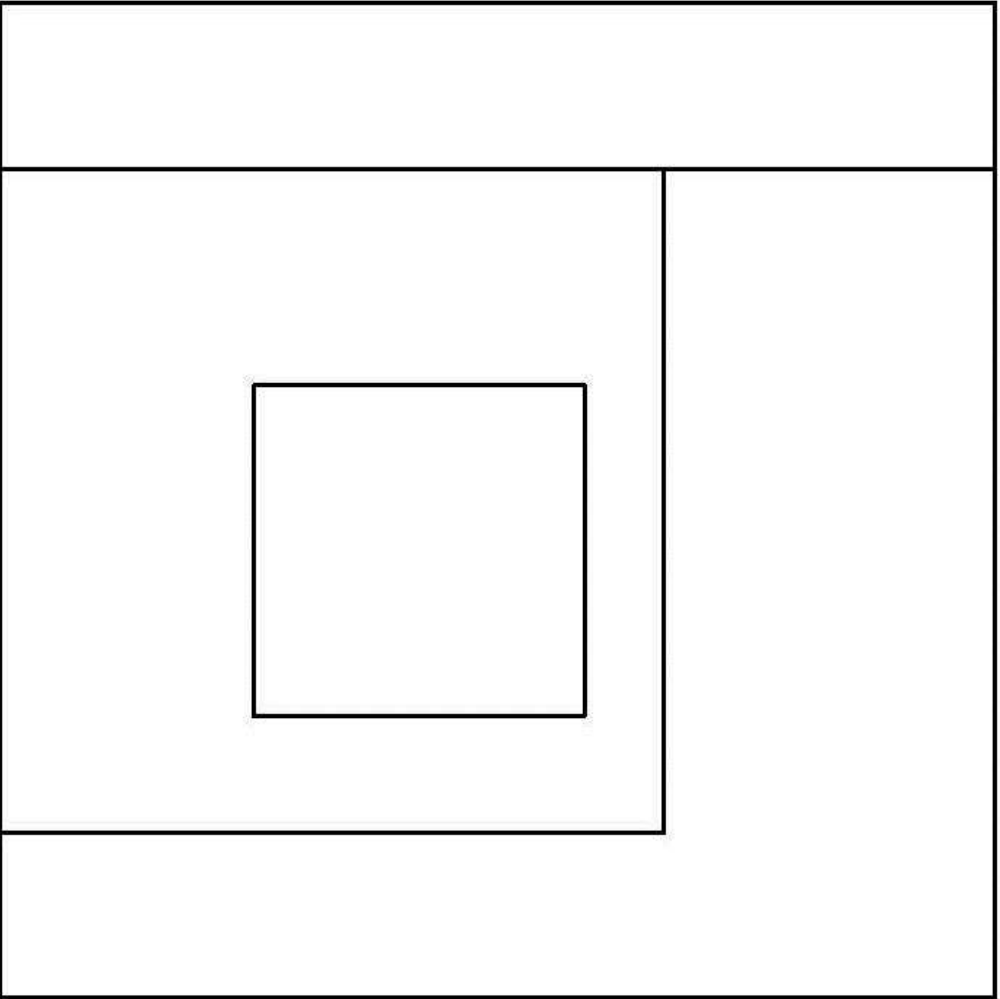
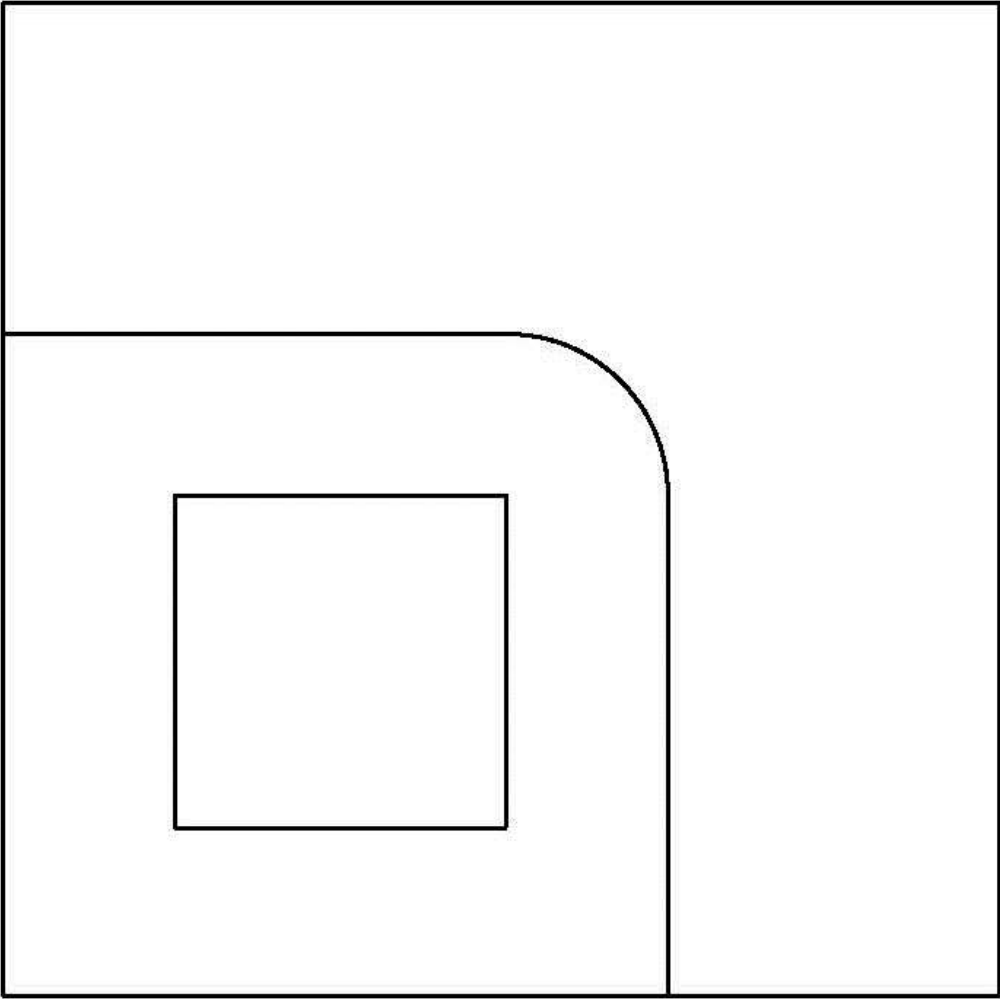
Space Standard Sketches - 6x6



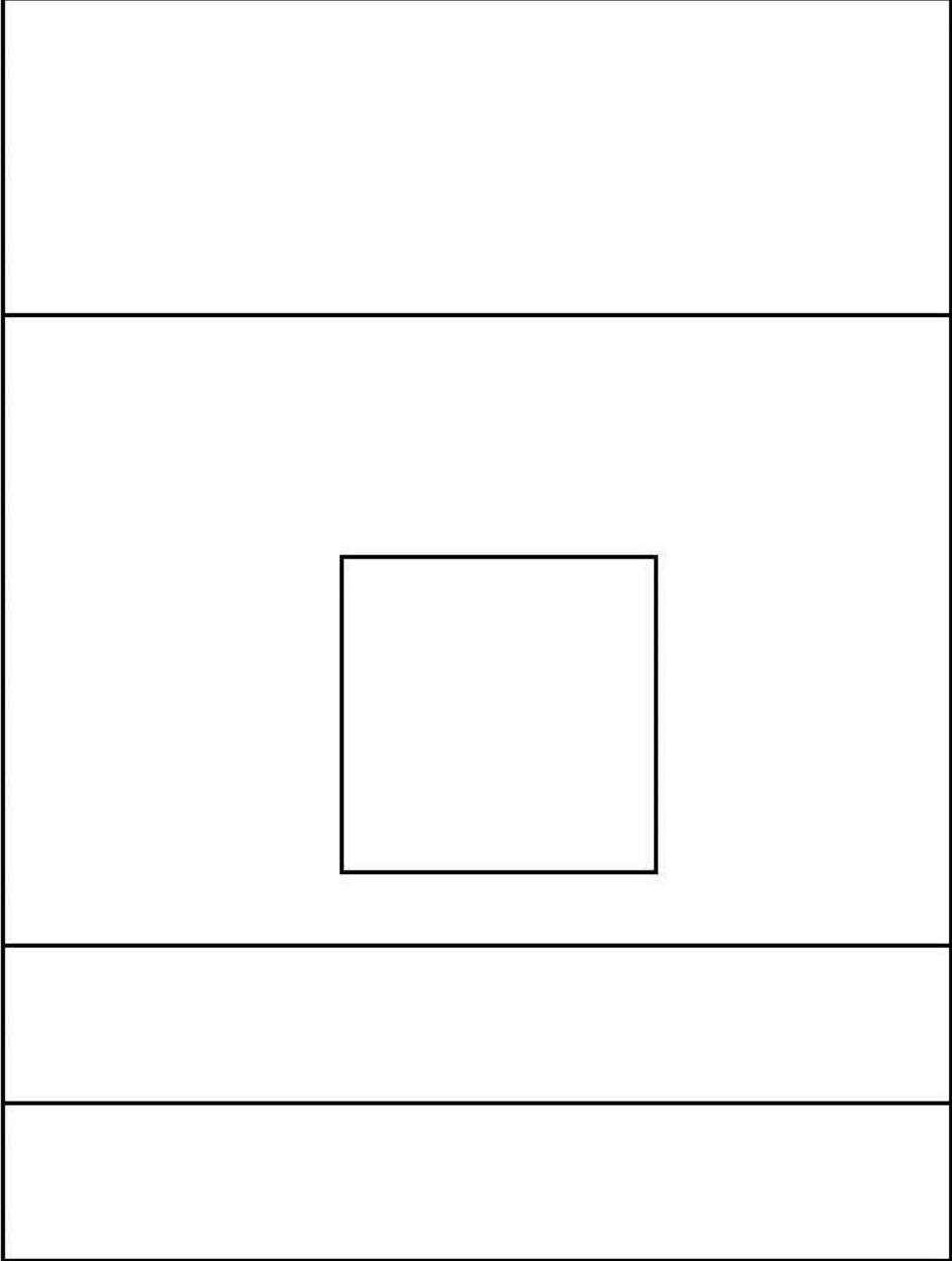
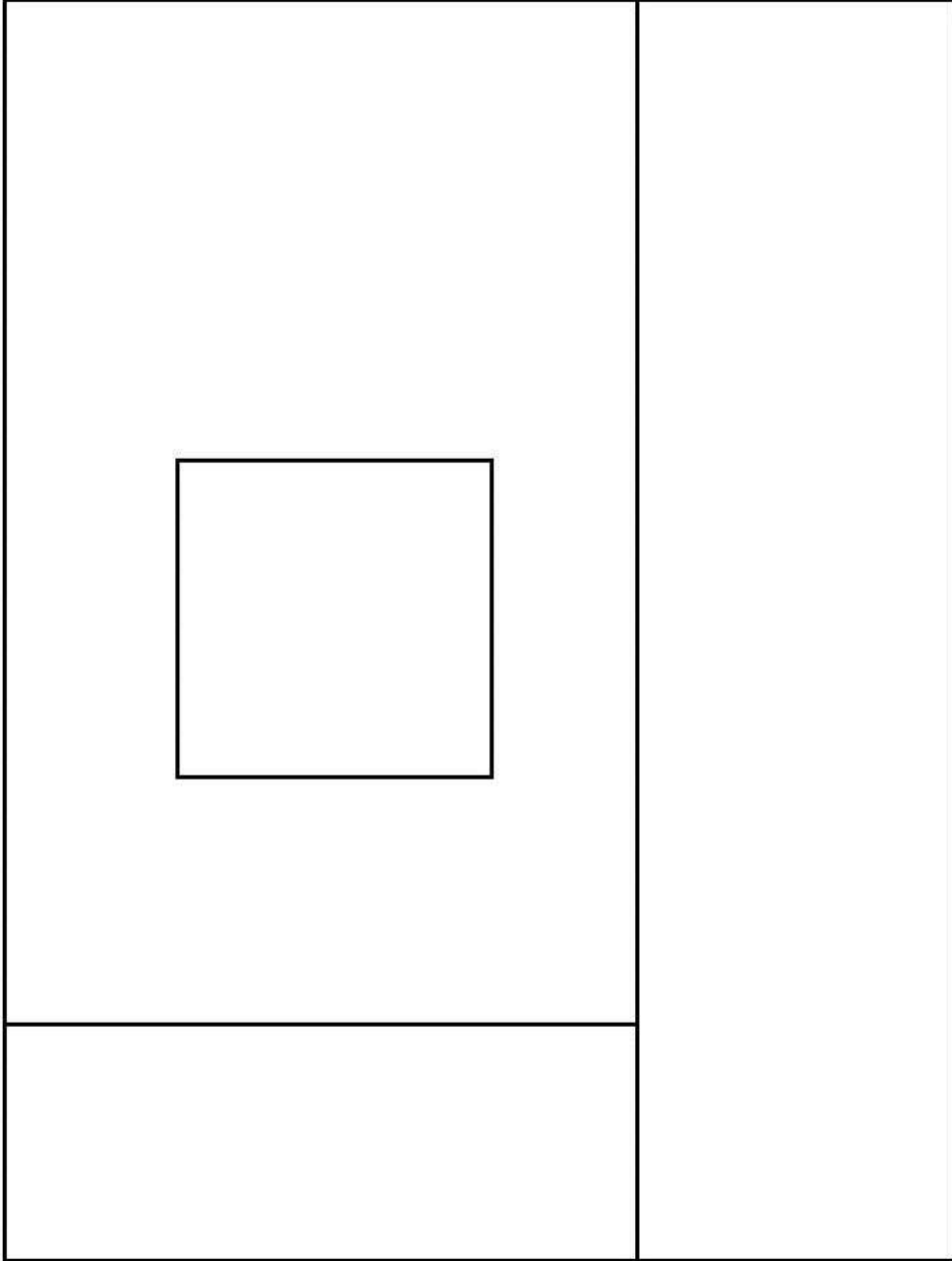
Space Standard Sketches - 6x8



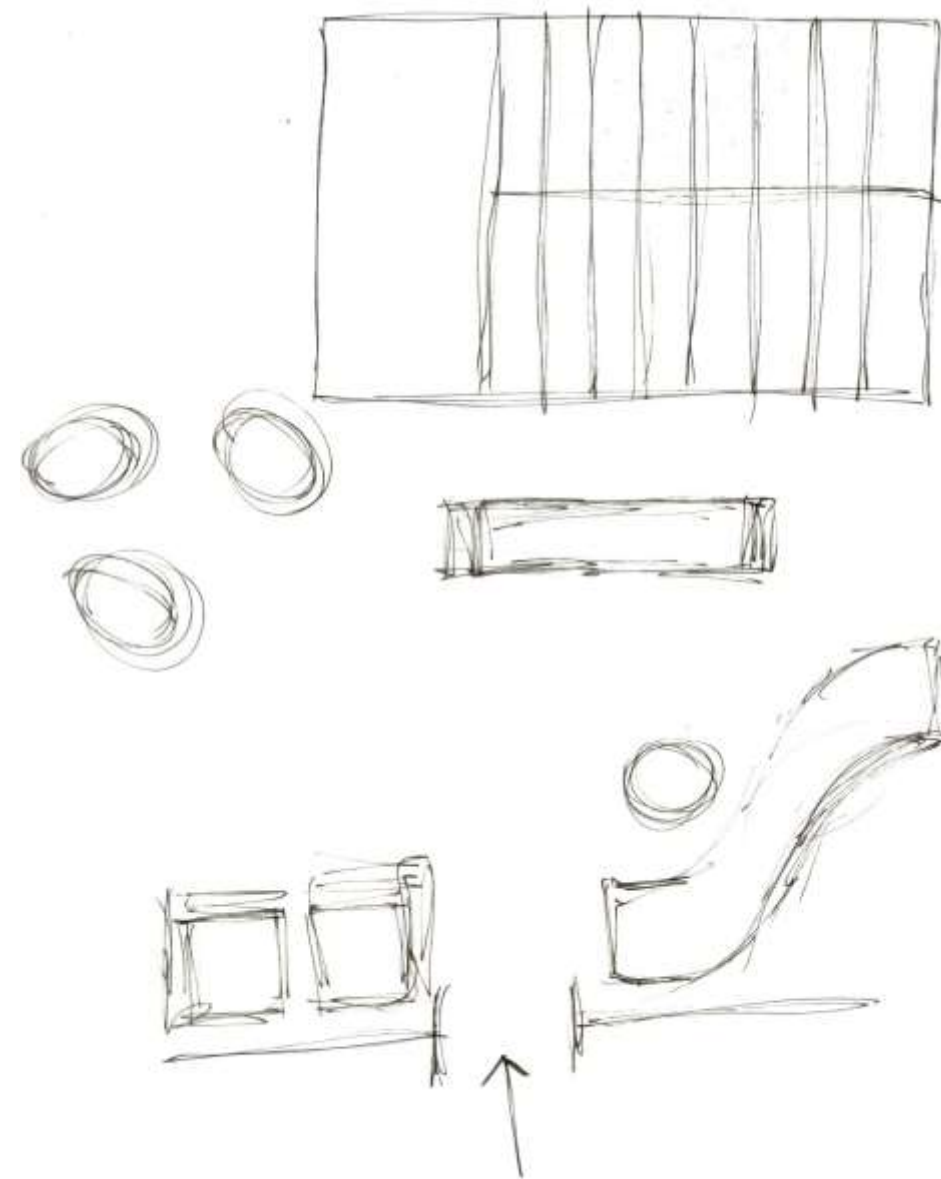
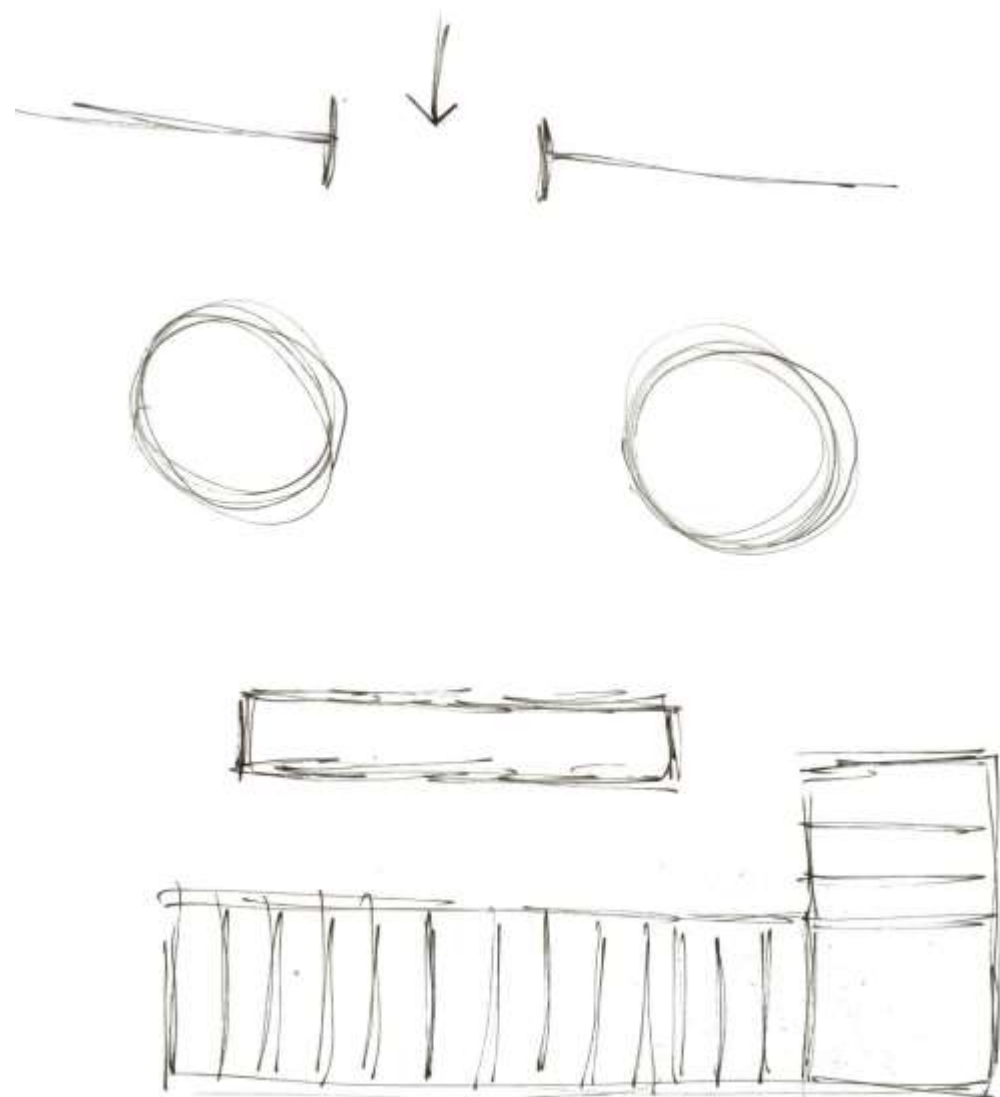
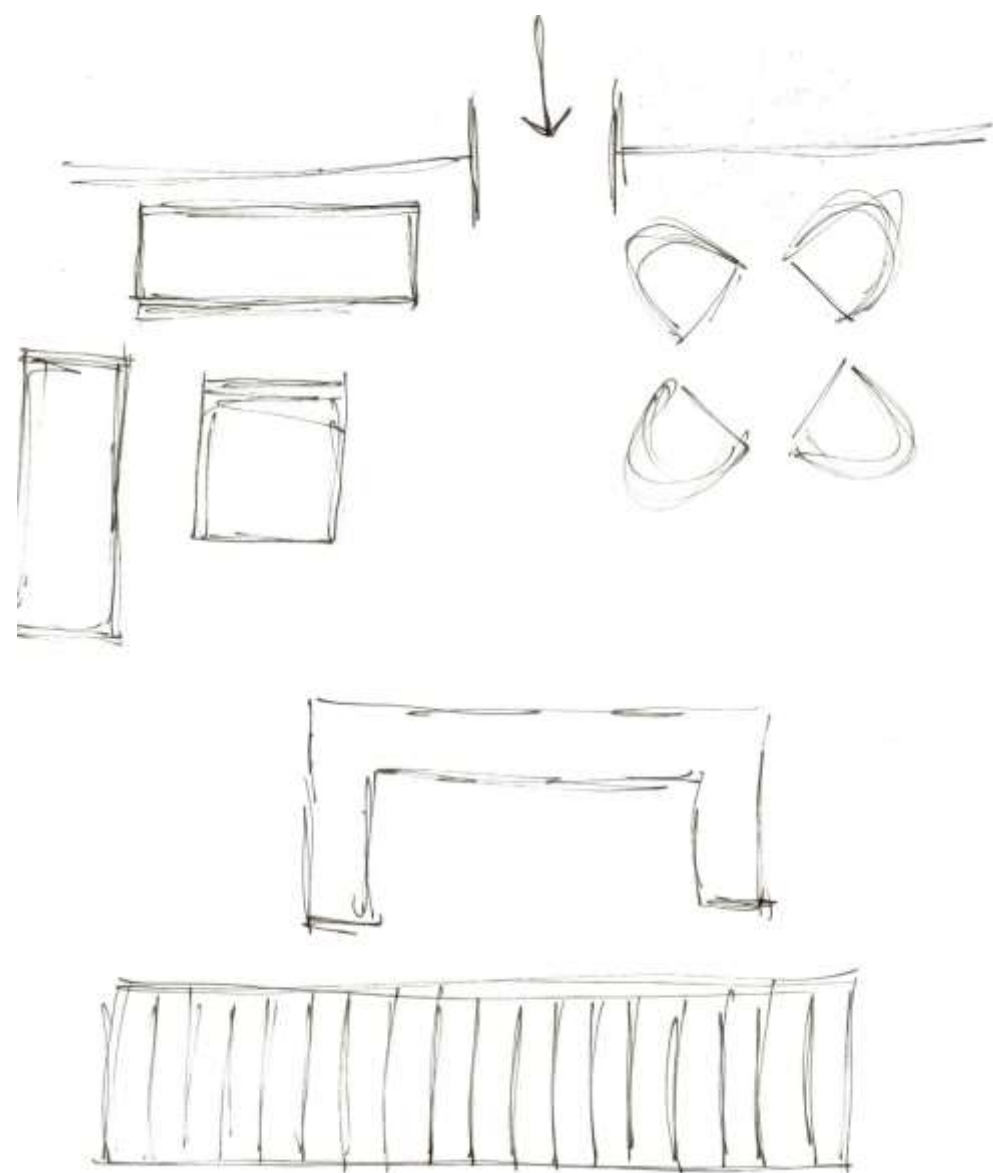
Space Standard Drawings - 6x6



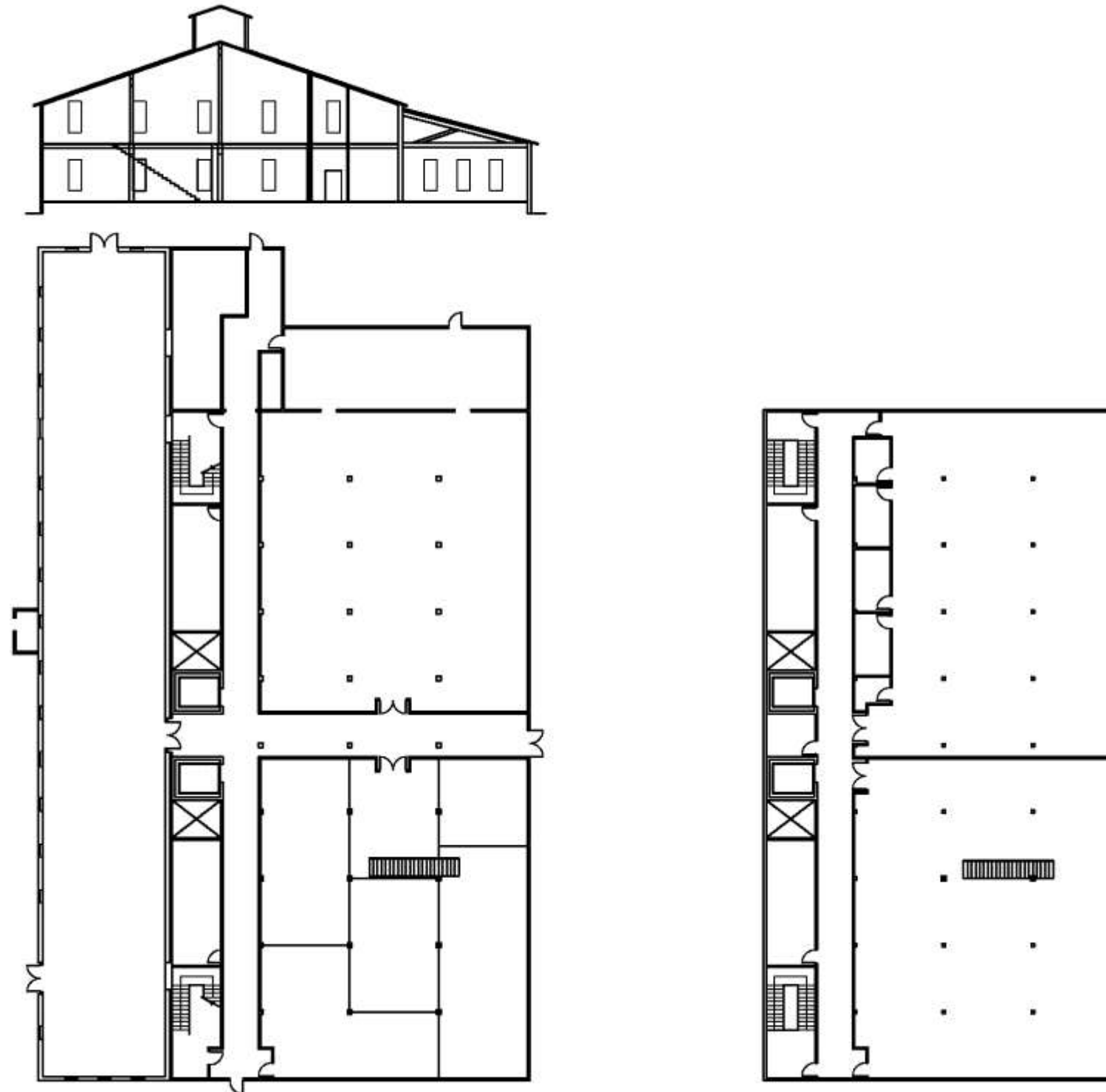
Space Standard Drawings - 6x8



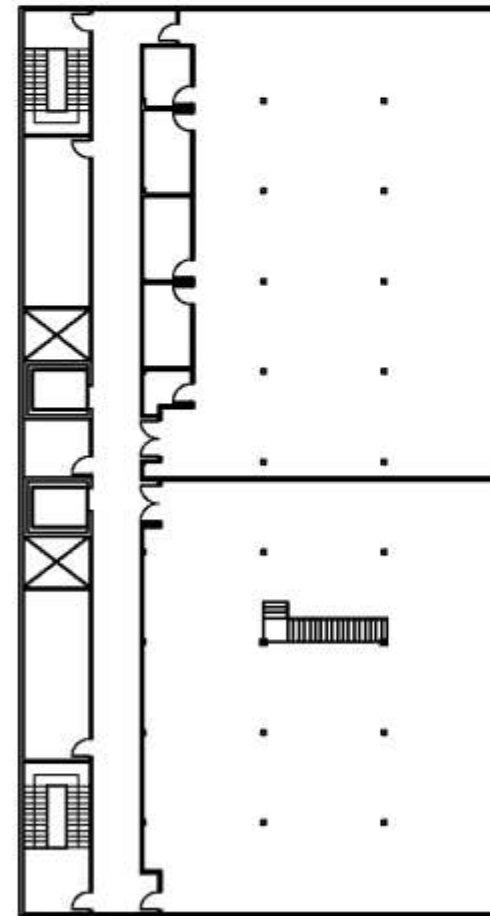
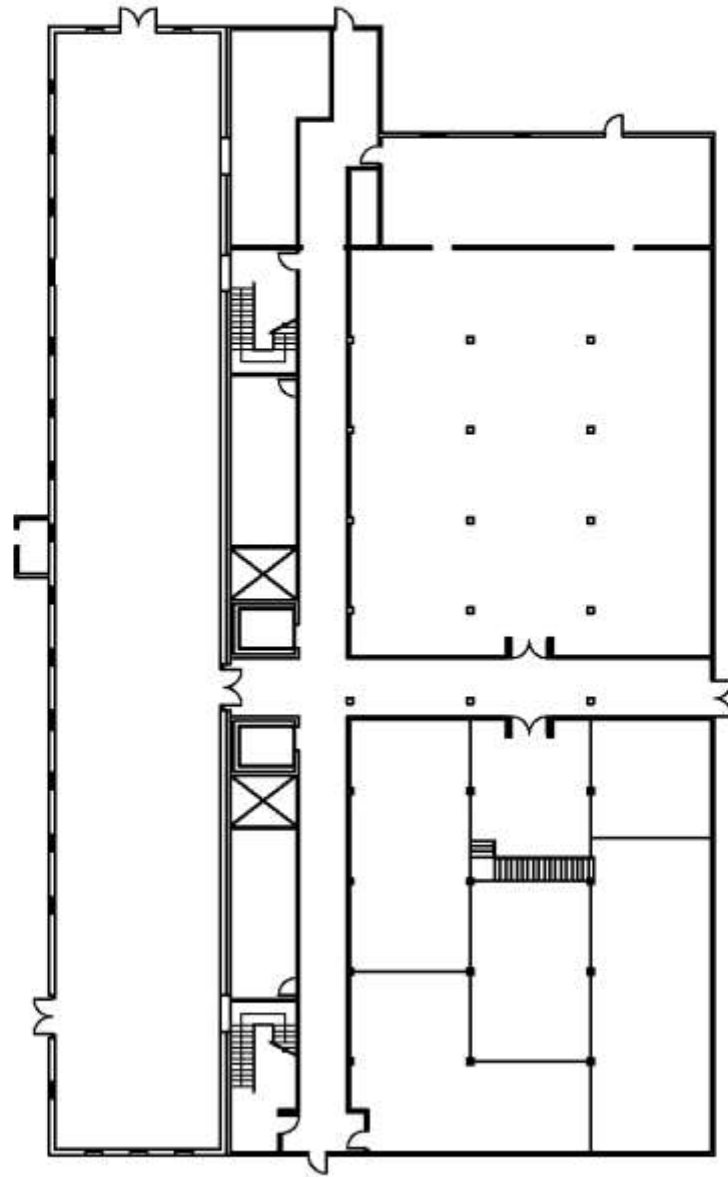
Assignment 3 - Sketches



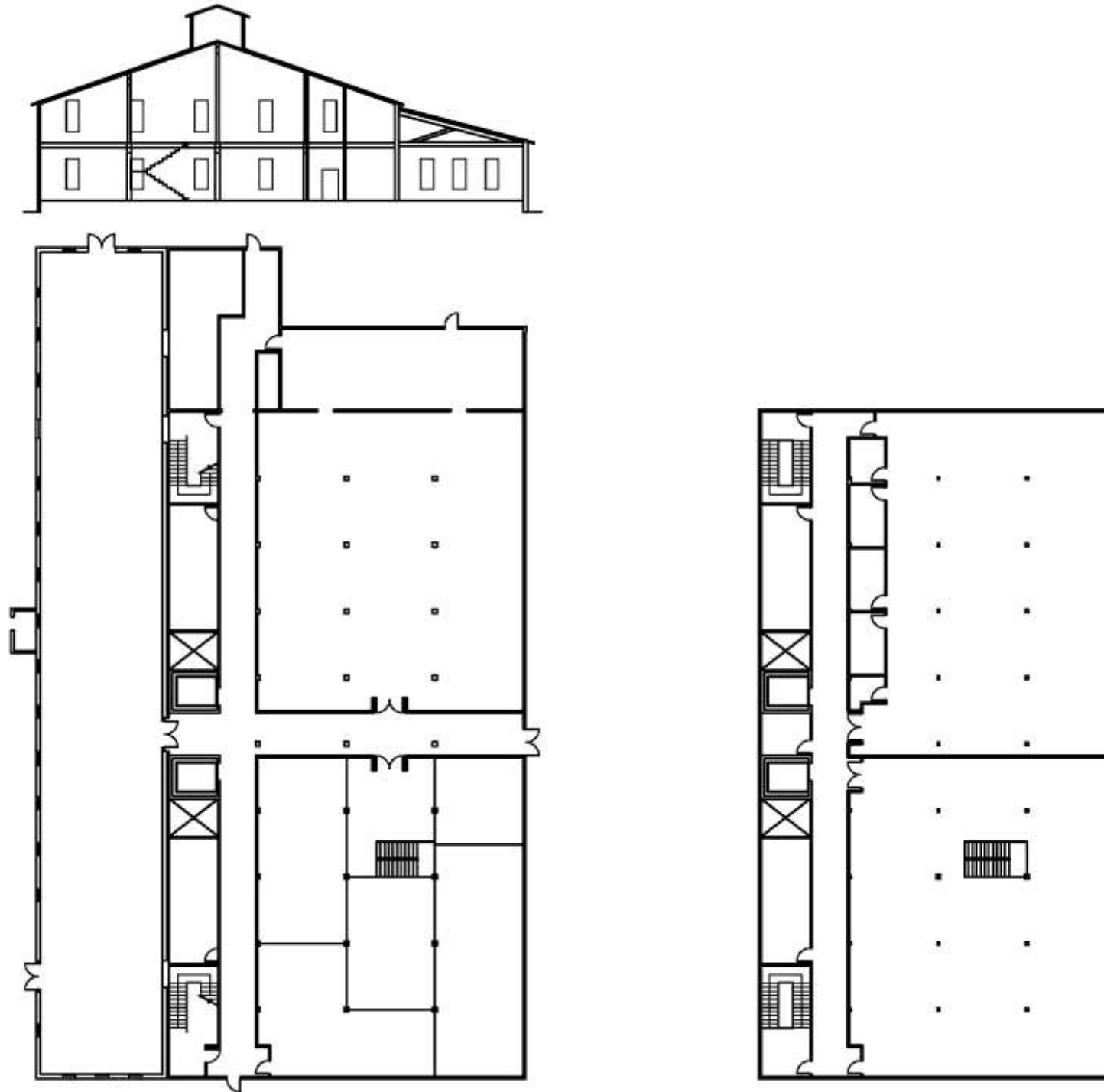
Assignment 3 - Straight Run



Assignment 3 - L Staircase



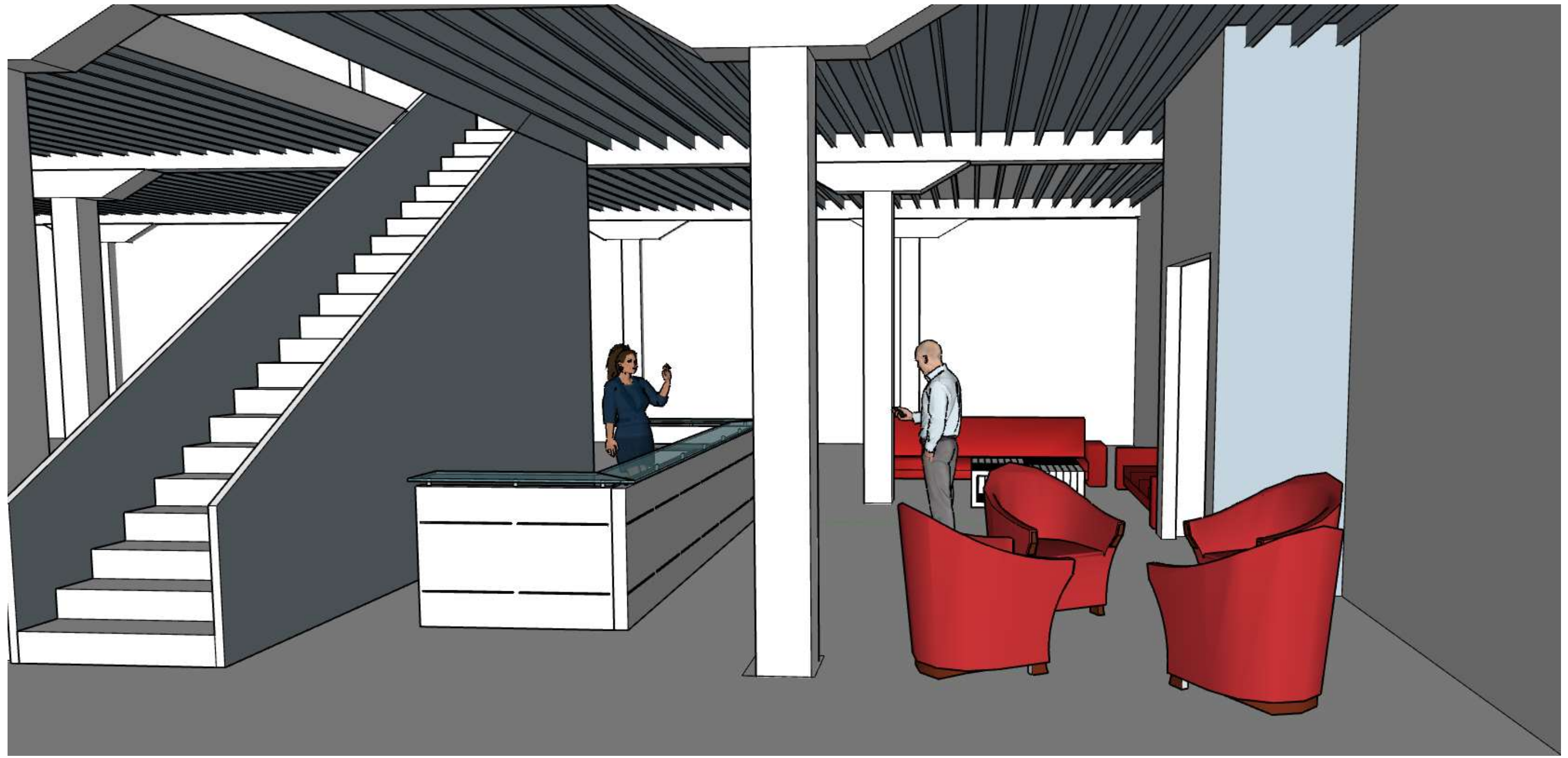
Assignment 3 - Scissor Staircase



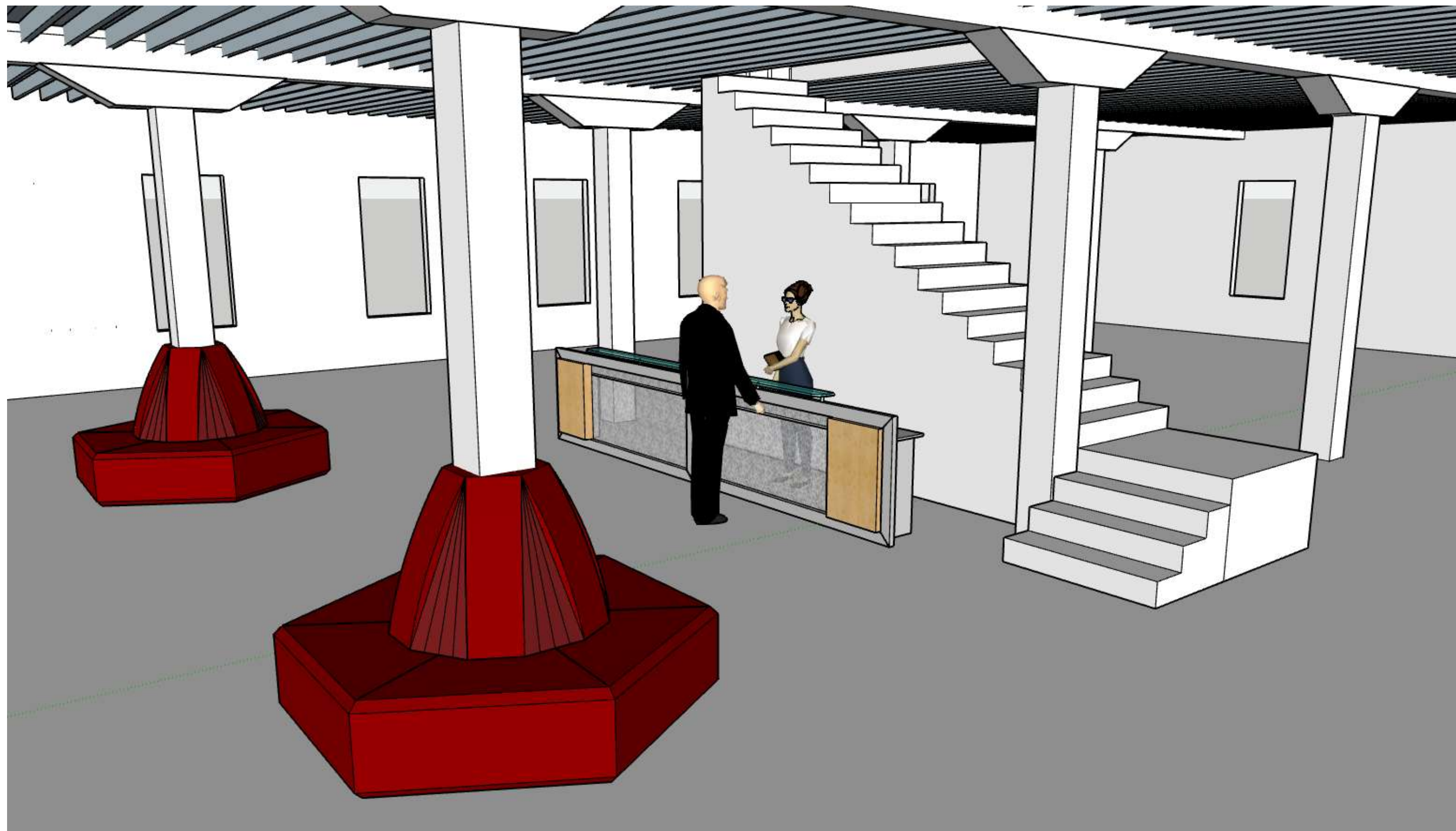
Assignment 4 - Straight Run



Assignment 4 - Straight Run



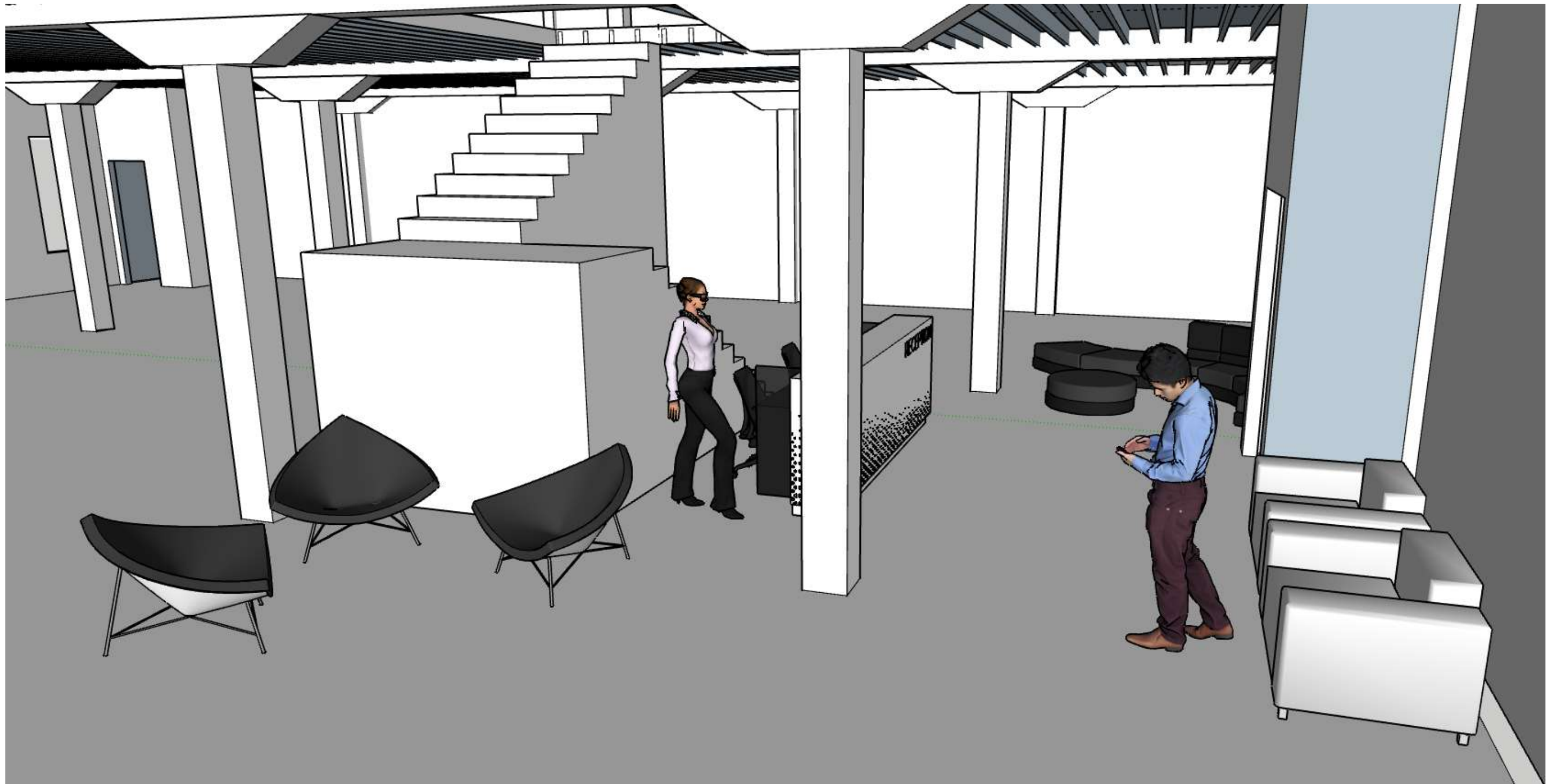
Assignment 4 - L Staircase



Assignment 4 - L Staircase



Assignment 4 - Scissor Staircase



Assignment 4 - Scissor Staircase

