

The Client Profile

The Gateway Center is a resource center for exploring the design history of the coastal south. Located in Greenville NC, the Center is a partnership between the North Carolina Department of Natural and Cultural Resources and East Carolina University's Department of History, with major funding from the Golden LEAF Foundation.

This state-of-the-art facility allows visitors and scholars to research the rich history of the region, as evidenced by the implements and furnishings used by residents. Research published and programs conducted by the Center paint a detailed portrait of everyday life in the area

The Center includes:

- Visitor reception area
- Exhibition space
- Meeting rooms with full audio/video capabilities
- Facilities for researchers
- Documentation workroom



Noel Palma

IDSN 2102

Interior Design Fundamentals

Professor Charles Gustina

**Department of
Interior Design & Merchandising
College of Human Ecology
East Carolina University**

The Program Spreadsheet

Noel Palma

IDSN 2102
 Interior Design Fundamentals
 Professor Charles Gustina

Gateway Center

PERSONNEL

Position	Personnel Totals		Unit Square Ft.		Extended Sq. Feet	Equipment			Notes
	Current	Future	Office	Workstation		PC	Printer	Fax	
					0				
Director	0	1	120		120	1	1		
					0				
Administrative Assistant	0	1		100	100	1	1		Locate directly outside Dir office
					0				
Receptionist	0	1		0	0	1	1		Included in Reception/Waiting
					0				
Visiting Fellows	0	8		48	384	8			Locate away from Entry; 1 Shared printer
					0				
Guest Research Stations	0	70		36	2520				May be split up; 1 Shared printer
					0				
Technicians	0	2	100		200	4	2		Locate near Workroom
					0				
Barista	0	1			0				Included in Pantry
					0				
Personnel Totals:	0	84			3324	15	5	0	

Department Summary

Information:
 Personnel 3324 Square Ft.
 Support 2360 Square Ft.
Sub Total: 5684 Square Ft.
 Circulation 1.54
Total Carpetable: 8753.4 Square Ft.

Interviewee:

Interview Date:
 Revision Submitted:
 Sign Off: _____

SUPPORT SPACES

Space	Support/Equipment		Unit Square Feet	Extended Sq. Feet	Location	Notes
	Current	Future				
				0		
Reception/Waiting Area	0	1		300	Inside main entry; Visible from Admin Asst	Seating for 4 guests
				0		
Large Conference Room	0	1		400	Close to main entry	Seating for 14 at table, 6 at side; Full A/V
				0		
Small Conference Room	0	3		120	Adjacent to Large Conference	Seating for 4-6; Full A/V
				0		
Workroom	0	1		360	Locate away from Entry	Counter space and work tables
				0		
Storage	0	1		100	May be split and scattered through the space	
				0		
Pantry	0	1		240		
				0		
Exhibition Space	0	1		600	Close to main entry	Some walls for hanging work
Support Totals:				2360		

Department Notes:

Historic character important to users
 Space must be flexible

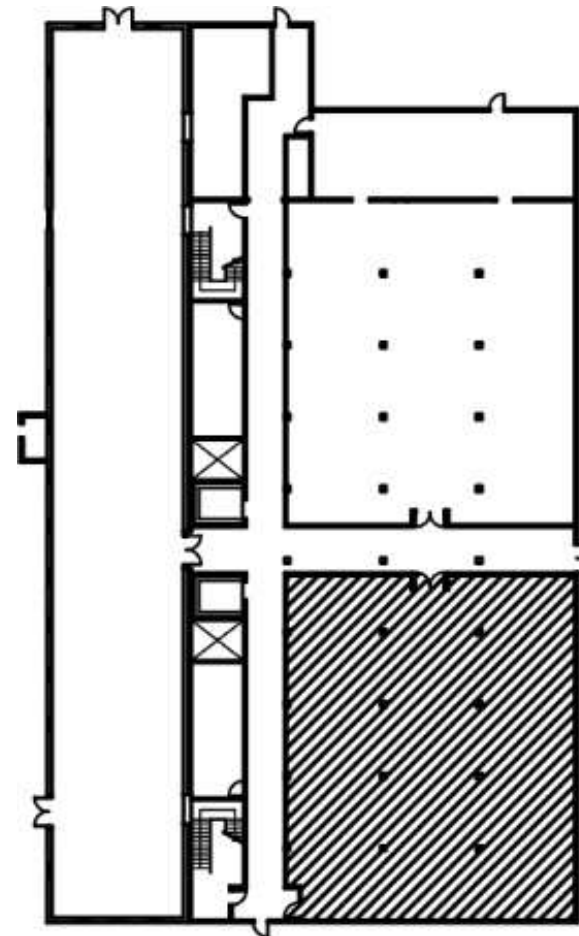
Department of
 Interior Design & Merchandising
 College of Human Ecology
 East Carolina University

Site Profile

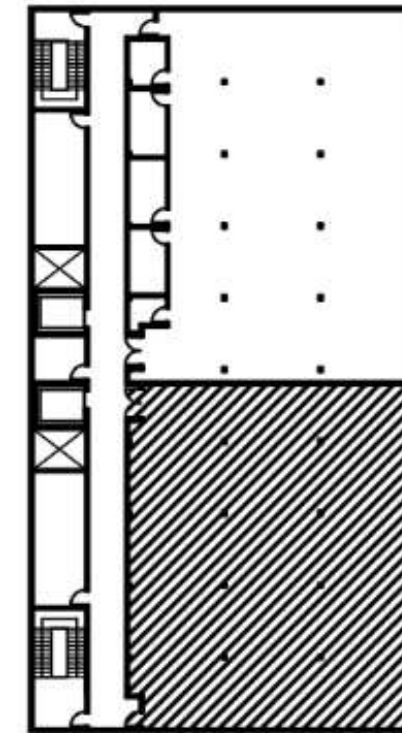
- Pritchard-Hughes Tobacco Building
Pitt and 11th Streets
Greenville NC
- Erected: first quarter of the Twentieth Century
- Heavy timber construction
- Client to occupy tenant space on first and second floors



Building Exterior



**1st Floor Tenant Area
4,280 Square Feet**



**2nd Floor Tenant Area
4,280 Square Feet**

Noel Palma

IDSN 2102

Interior Design Fundamentals

Professor Charles Gustina

**Department of
Interior Design & Merchandising
College of Human Ecology
East Carolina University**

Site Analysis

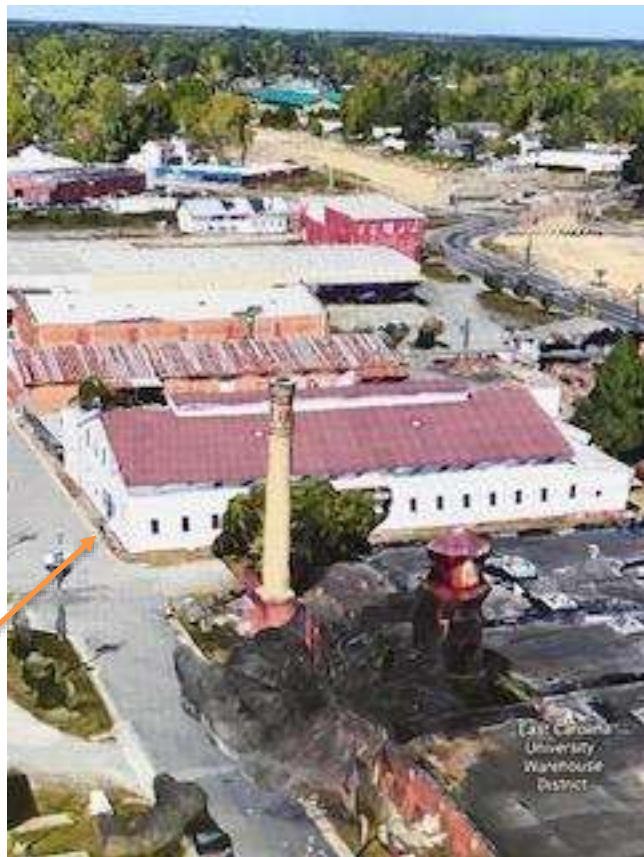


The sun rises in the East and sets in the West. This means that the longer sides of the building will receive the most sunlight. The sun will also be directly over the building in the afternoon, creating light and heat in the building.

Noel Palma

**IDSN 2102
Interior Design Fundamentals
Professor Charles Gustina**

**Department of
Interior Design & Merchandising
College of Human Ecology
East Carolina University**



Noel Palma

**IDSN 2102
Interior Design Fundamentals
Professor Charles Gustina**

**Department of
Interior Design & Merchandising
College of Human Ecology
East Carolina University**

Research

Greenville History

- Once known as the “Queen City on the Tar”
- Began 240 years ago
- Richard Evans wanted to create his plantation into a town
 - Named it Martinsborough
- In 1778 the name changed to Greenville after a war hero
- Known for its education
- Began to prosper in the 1870’s with businesses and nice homes



Pritchard-Hughes Warehouse

- Part of the Greenville Tobacco Warehouse Historic District
 - 22.3 acres
 - near the Dickinson Avenue corridor
- Neighborhood has 3 warehouses and one structure in the district
 - 35 buildings
- Buildings in the neighborhood are from 1905 to 1947
- Most buildings in the neighborhood are classical revival in style
- Became marked as historic in 2007



https://www.revolvy.com/main/index.php?s=Greenville%20Tobacco%20Warehouse%20Historic%20District&item_type=topic
<https://visitgreenvillenc.com/about-us/about-greenville-pitt-county/history-of-greenville/>

Noel Palma

IDSN 2102

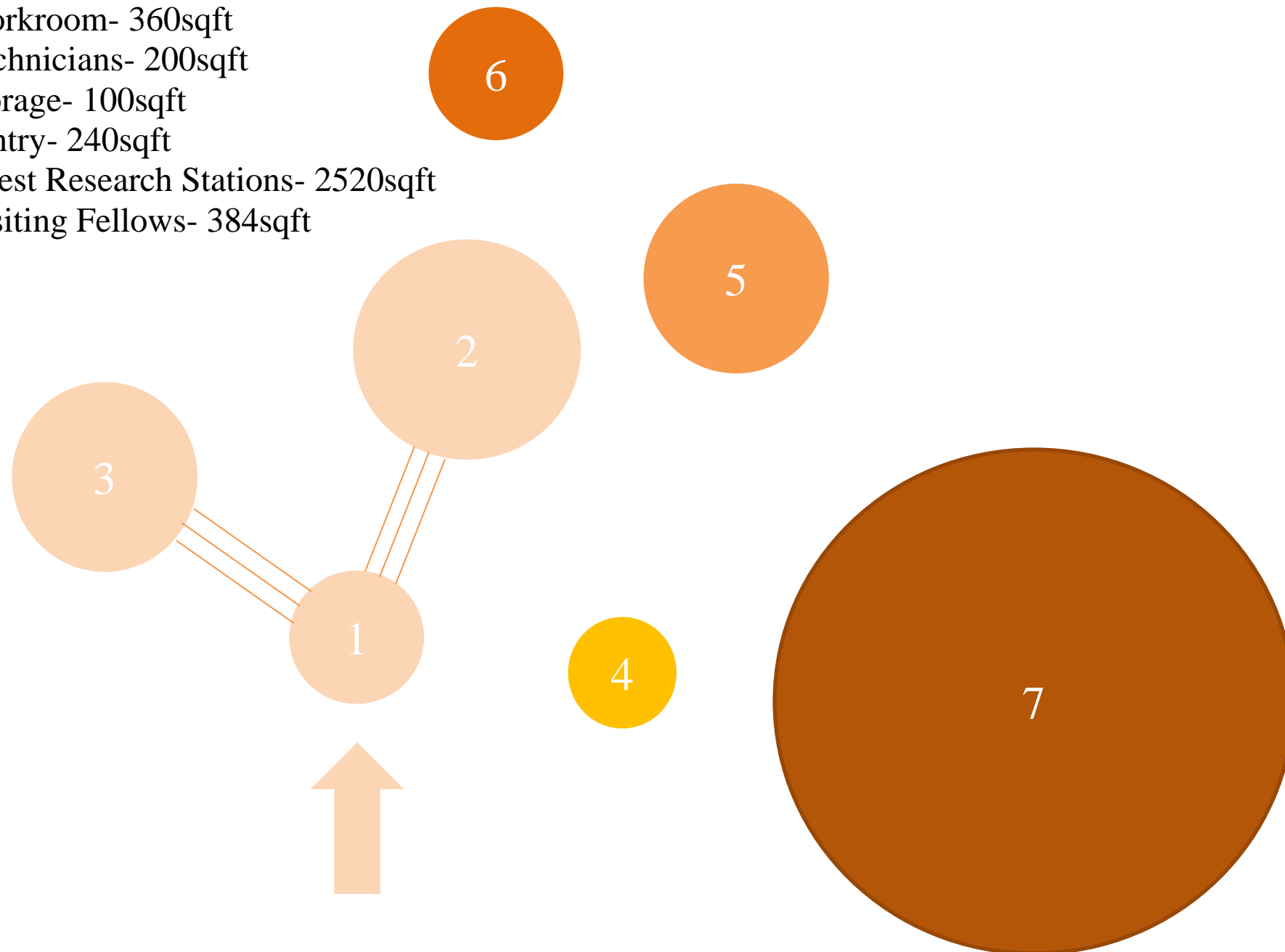
Interior Design Fundamentals

Professor Charles Gustina

Department of
Interior Design & Merchandising
College of Human Ecology
East Carolina University

Bubble Diagram

- 1: Receptionist/Waiting Area- 300sqft
- 2: Large Conference Room- 400sqft
- 2: Small Conference Rooms- 360sqft
- 3: Exhibition Space- 600sqft
- 4: Directors Office- 120sqft
- 4: Administrative Assistant- 100sqft
- 5: Workroom- 360sqft
- 5: Technicians- 200sqft
- 6: Storage- 100sqft
- 6: Pantry- 240sqft
- 7: Guest Research Stations- 2520sqft
- 7: Visiting Fellows- 384sqft



Noel Palma

IDSN 2102

Interior Design Fundamentals

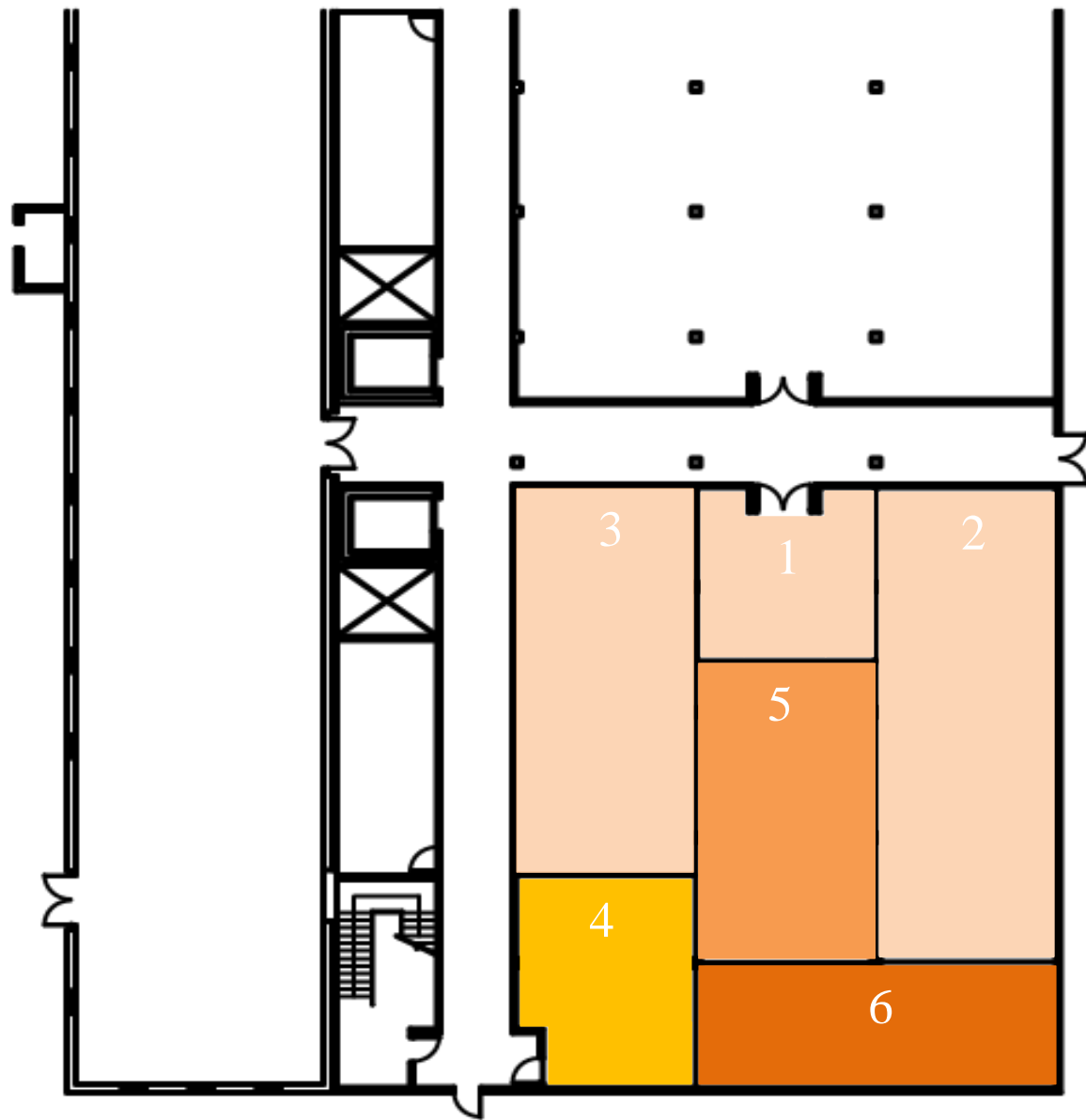
Professor Charles Gustina

**Department of
Interior Design & Merchandising
College of Human Ecology
East Carolina University**

Blocking Diagram

Noel Palma

IDSN 2102
Interior Design Fundamentals
Professor Charles Gustina

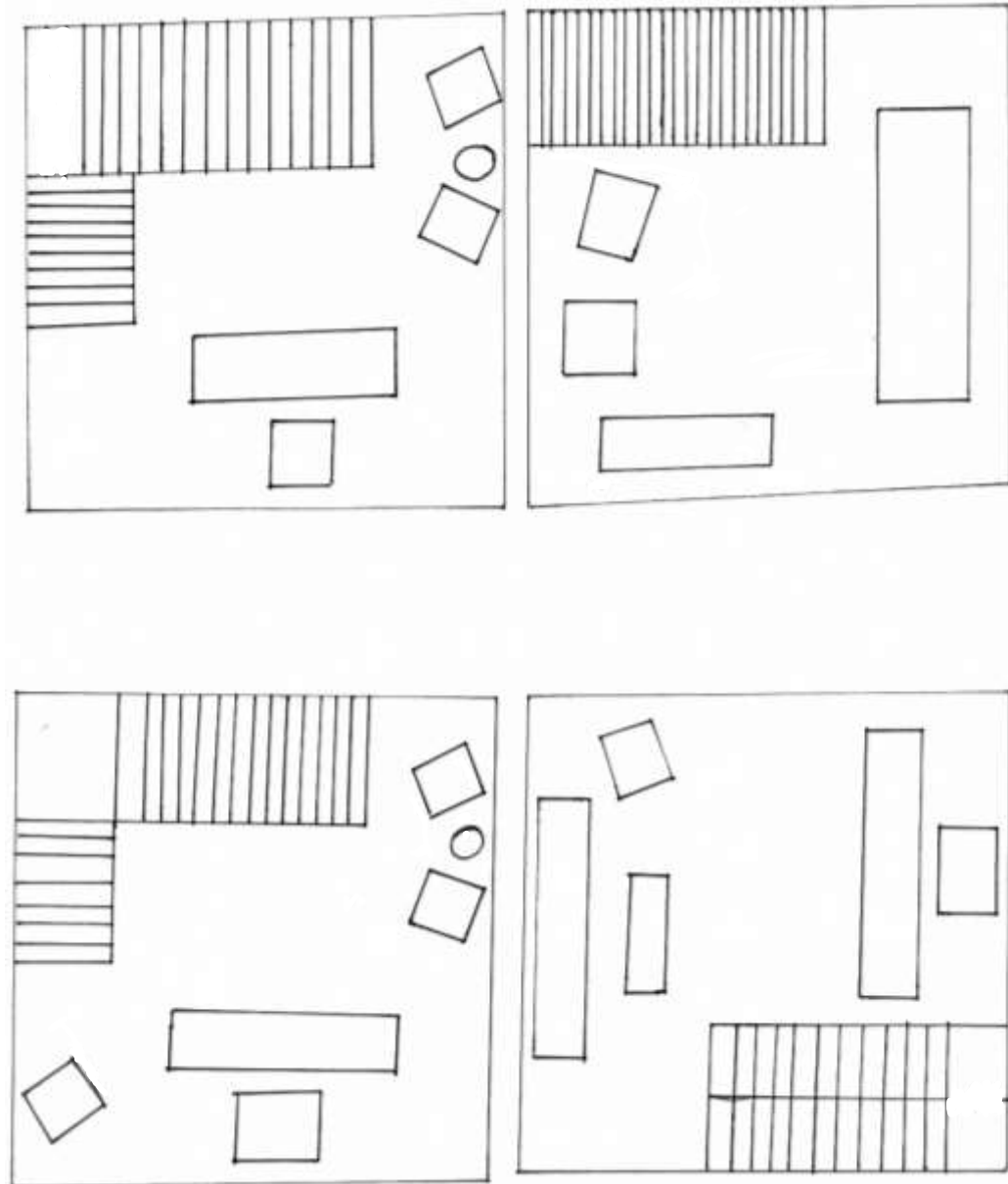


Department of
Interior Design & Merchandising
College of Human Ecology
East Carolina University

Stair Plan

Noel Palma

IDSN 2102
Interior Design Fundamentals
Professor Charles Gustina



Department of
Interior Design & Merchandising
College of Human Ecology
East Carolina University

Straight Stair Perspective 1

Noel Palma

**IDSN 2102
Interior Design Fundamentals
Professor Charles Gustina**

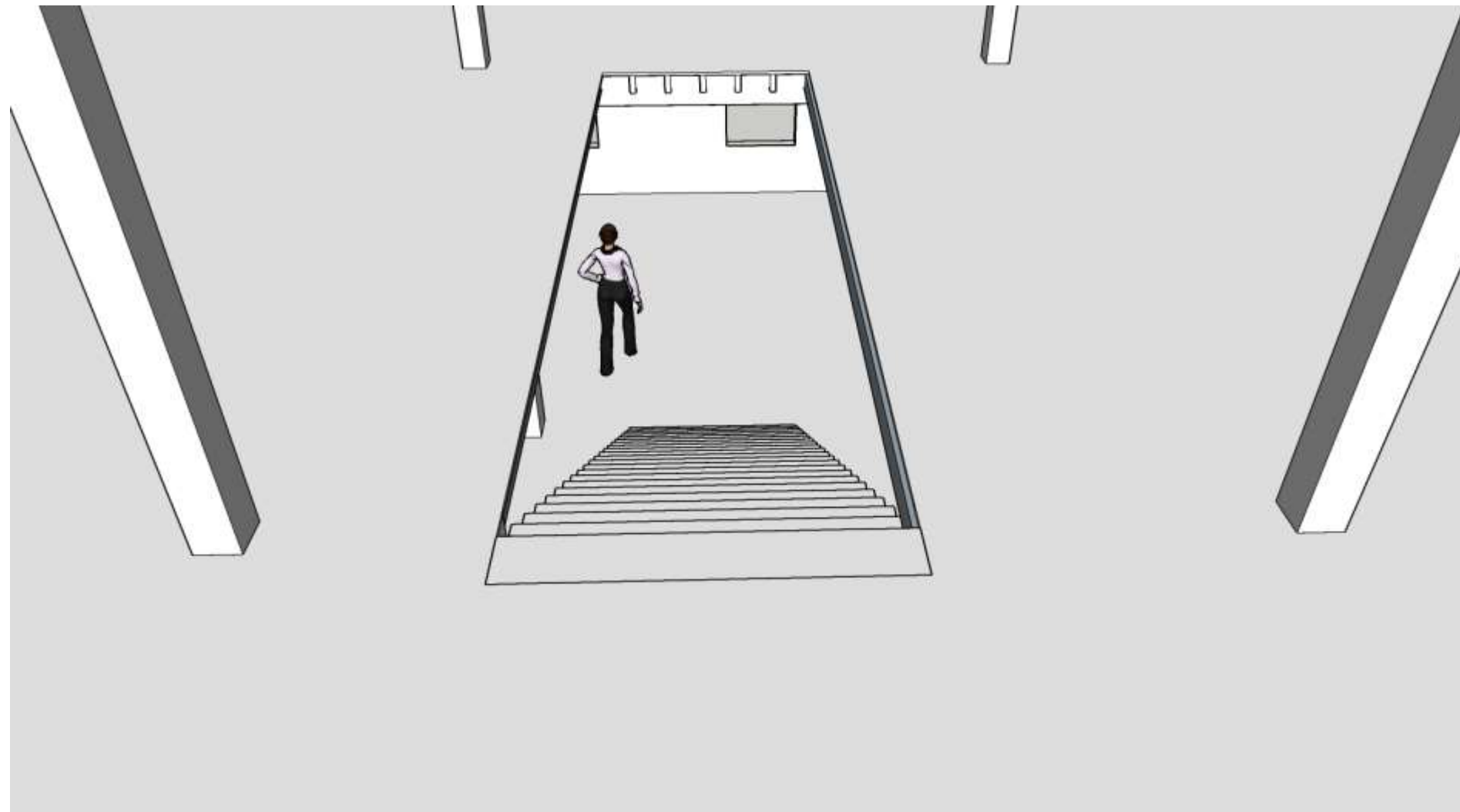


**Department of
Interior Design & Merchandising
College of Human Ecology
East Carolina University**

Straight Stair Perspective 2

Noel Palma

**IDSN 2102
Interior Design Fundamentals
Professor Charles Gustina**

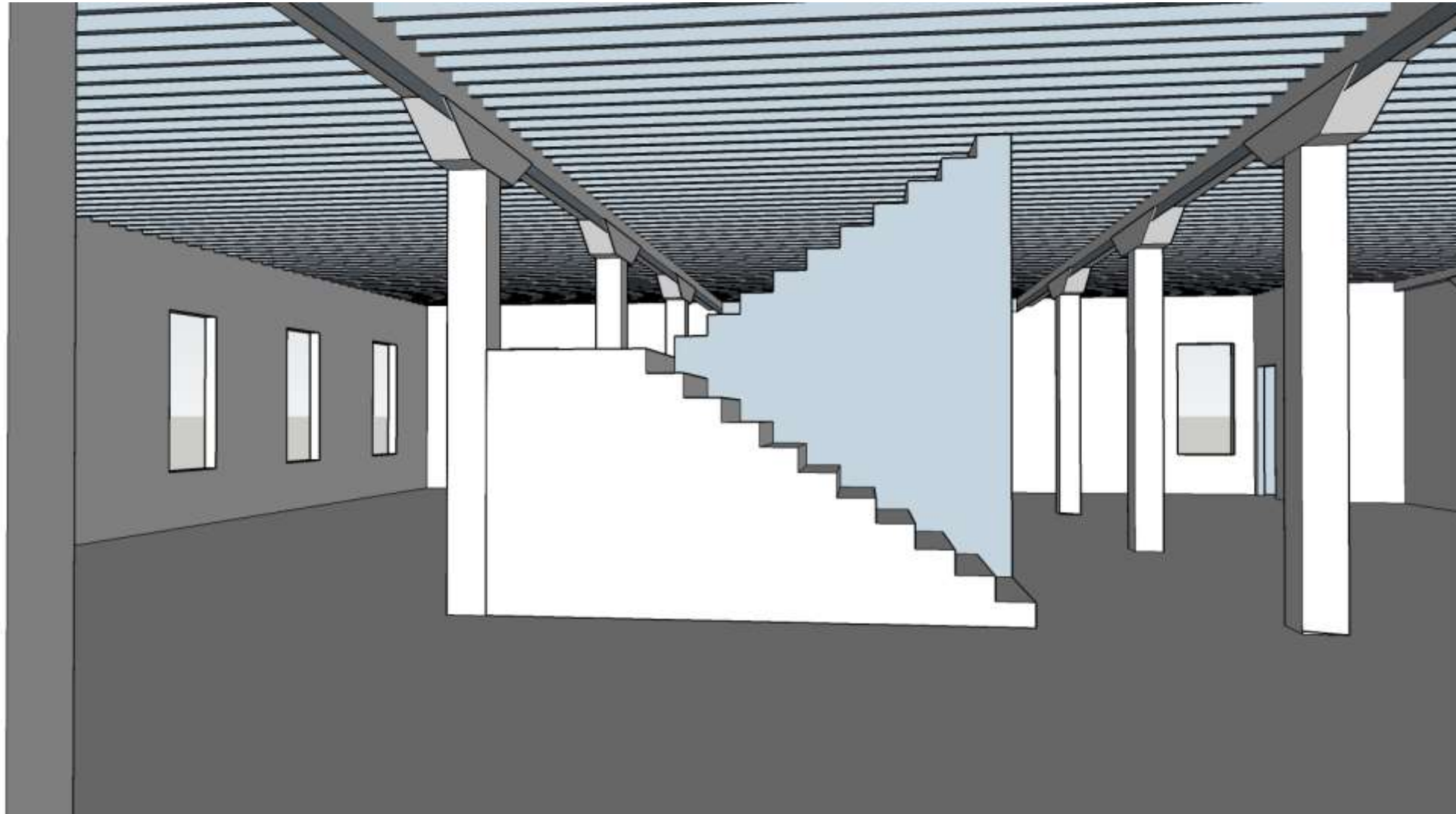


**Department of
Interior Design & Merchandising
College of Human Ecology
East Carolina University**

Scissors Stair Perspective 1

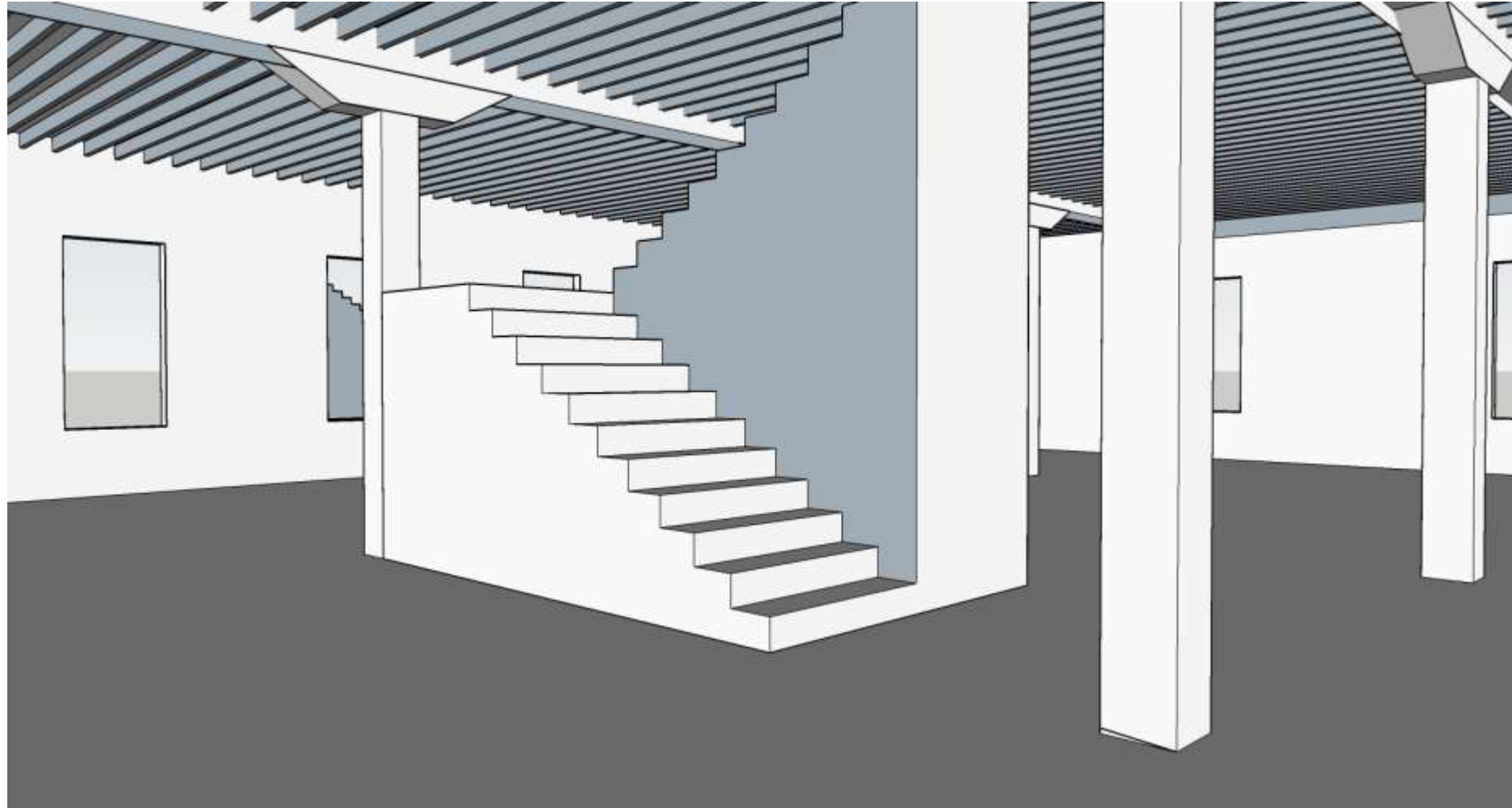
Noel Palma

**IDSN 2102
Interior Design Fundamentals
Professor Charles Gustina**



**Department of
Interior Design & Merchandising
College of Human Ecology
East Carolina University**

Scissors Stair Perspective 2



Noel Palma

**IDSN 2102
Interior Design Fundamentals
Professor Charles Gustina**

**Department of
Interior Design & Merchandising
College of Human Ecology
East Carolina University**

L Shaped Stair Perspective 1

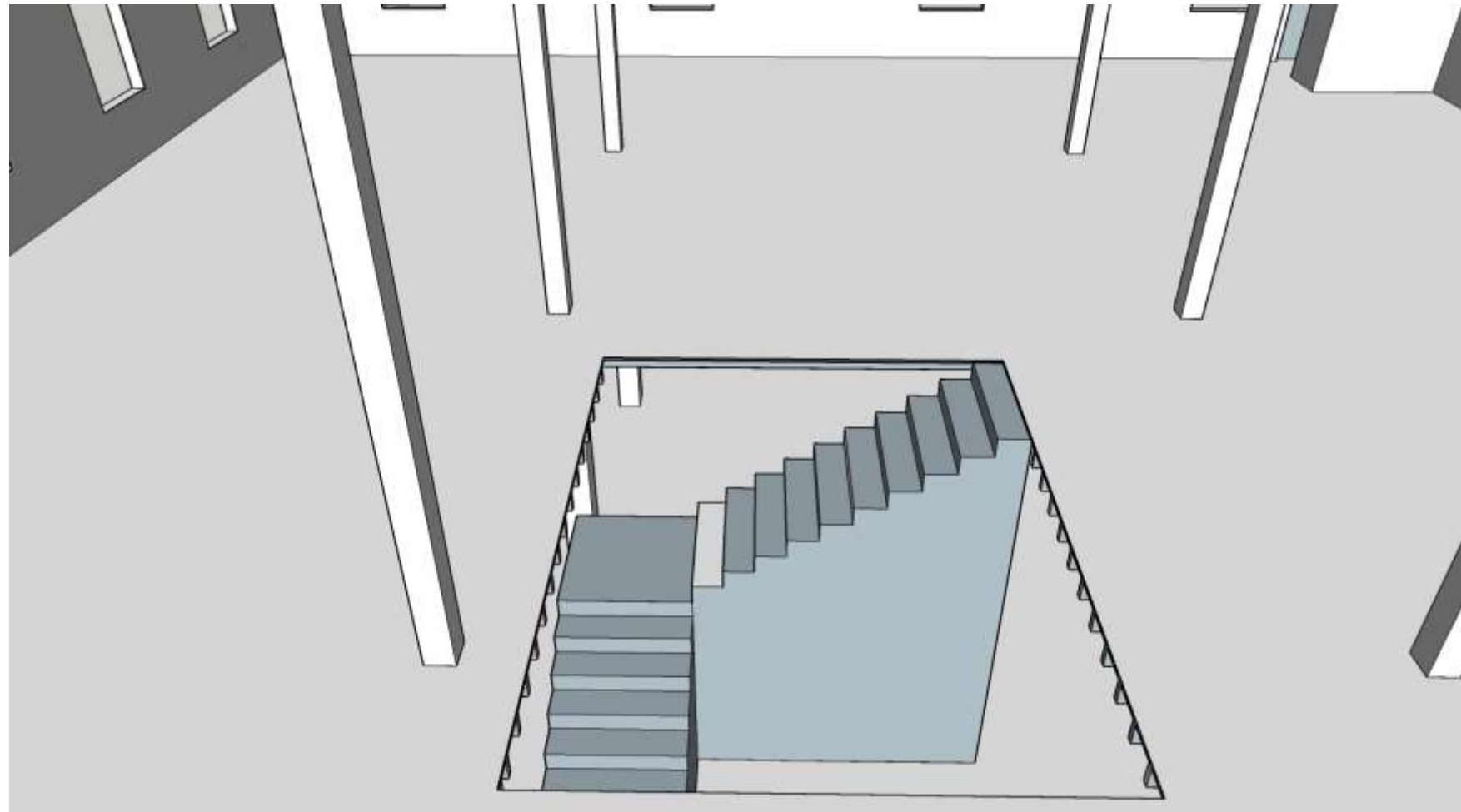
Noel Palma

**IDSN 2102
Interior Design Fundamentals
Professor Charles Gustina**



**Department of
Interior Design & Merchandising
College of Human Ecology
East Carolina University**

L Shaped Stair Perspective 2



Noel Palma

**IDSN 2102
Interior Design Fundamentals
Professor Charles Gustina**

**Department of
Interior Design & Merchandising
College of Human Ecology
East Carolina University**

