

Christy Reynolds

Portfolio 1

IDSN 2102

Fall 2017

Mr. Gustina

Client Profile

The Gateway Center is a resource center for exploring the design history of the coastal south. Located in Greenville NC, the Center is a partnership between the North Carolina Department of Natural and Cultural Resources and East Carolina University's Department of History, with major funding from the Golden LEAF Foundation.

This state-of-the-art facility allows visitors and scholars to research the rich history of the region, as evidenced by the implements and furnishings used by residents. Research published and programs conducted by the Center paint a detailed portrait of everyday life in the area

The Center includes:

- Visitor reception area
- Exhibition space
- Meeting rooms with full audio/video capabilities
- Facilities for researchers
- Documentation workroom



Program Spreadsheet

Gateway Center

PERSONNEL

Position	Personnel Totals		Unit Square Ft.		Extended Sq. Feet	Equipment			Notes
	Current	Future	Office	Workstation		PC	Printer	Fax	
Director	0	1	120		120	1	1		
Administrative Assistant	0	1		100	100	1	1		Locate directly outside Dir office
Receptionist	0	1		0	0	1	1		Included in Reception/Waiting
Visiting Fellows	0	8		48	384	8			Locate away from Entry; 1 Shared printer
Guest Research Stations	0	70		36	2520				May be split up; 1 Shared printer
Technicians	0	2	100		200	4	2		Locate near Workroom
Barista	0	1			0				Included in Pantry
Personnel Totals:	0	84			3324	15	5	0	

Department Summary

Information:

Personnel 3324 Square Ft.
 Support 2360 Square Ft.
Sub Total: 5684 Square Ft.
 Circulation 154
Total Carpetable: 8753 Square Ft.

Interviewee:

Interview Date:
 Revision Submitted:
 Sign Off:

SUPPORT SPACES

Space	Support/Equipment		Unit Square Feet	Extended Sq. Feet	Location	Notes
	Current	Future				
Reception/Waiting Area	0	1	300	300	Inside main entry; Visible from Admin Asst	Seating for 4 quests
Large Conference Room	0	1	400	400	Close to main entry	Seating for 14 at table, 6 at side; Full A/V
Small Conference Room	0	3	120	360	Adjacent to Large Conference	Seating for 4-6; Full A/V
Workroom	0	1	360	360	Locate away from Entry	Counter space and work tables
Storage	0	1	100	100	May be split and scattered through the space	
Pantry	0	1	240	240		
Exhibition Space	0	1	600	600	Close to main entry	Some walls for hanging work
Support Totals:				2360		

Department Notes:

Historic character important to users
 Space must be flexible

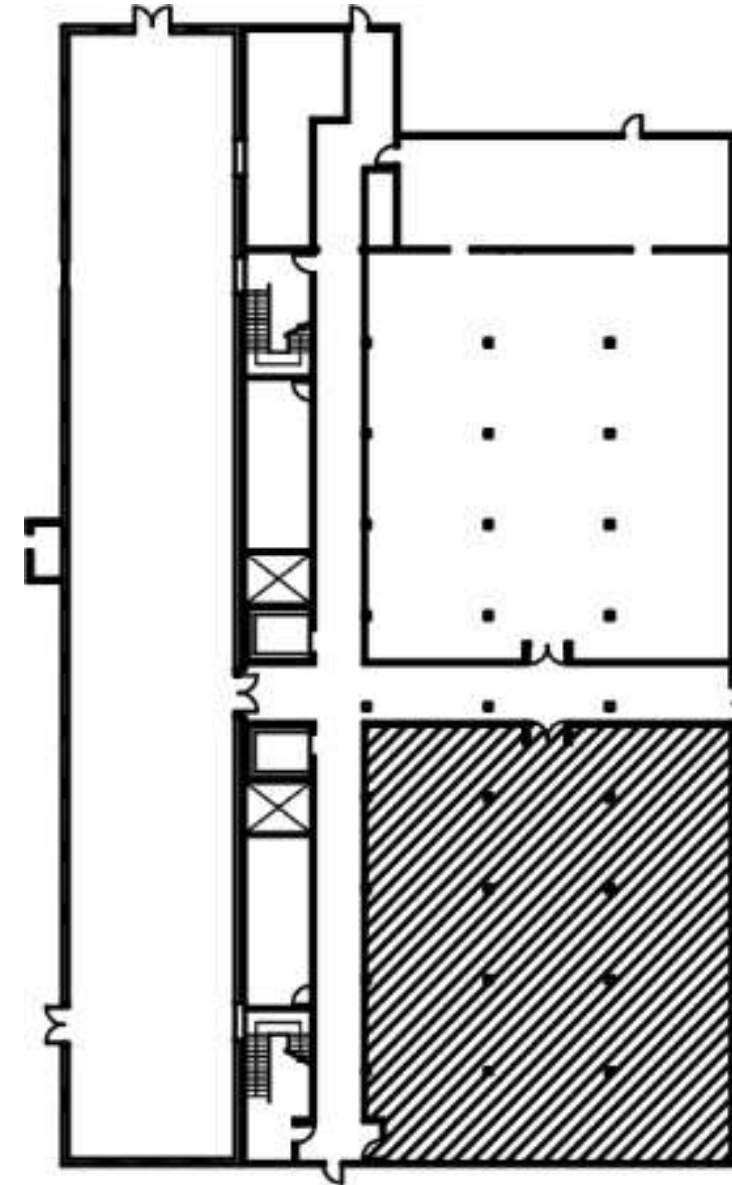


Site Profile

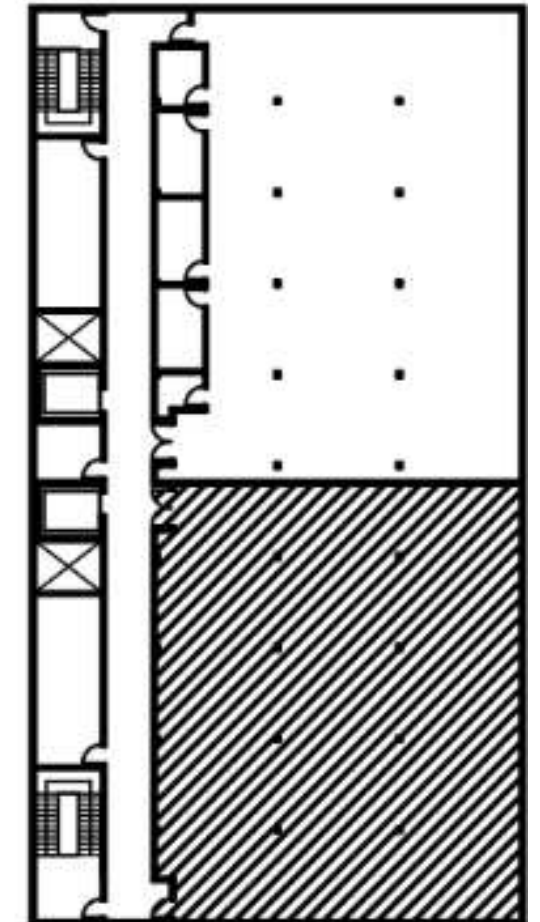
- Pritchard-Hughes Tobacco Building
Pitt and 11th Streets
Greenville NC
- Erected: first quarter of the Twentieth Century
- Heavy timber construction
- Client to occupy tenant space on first and second floors



Building Exterior



1st Floor Tenant Area
4,280 Square Feet



2nd Floor Tenant Area
4,280 Square Feet

Site Analysis



North view



East view



South view



West view



Research

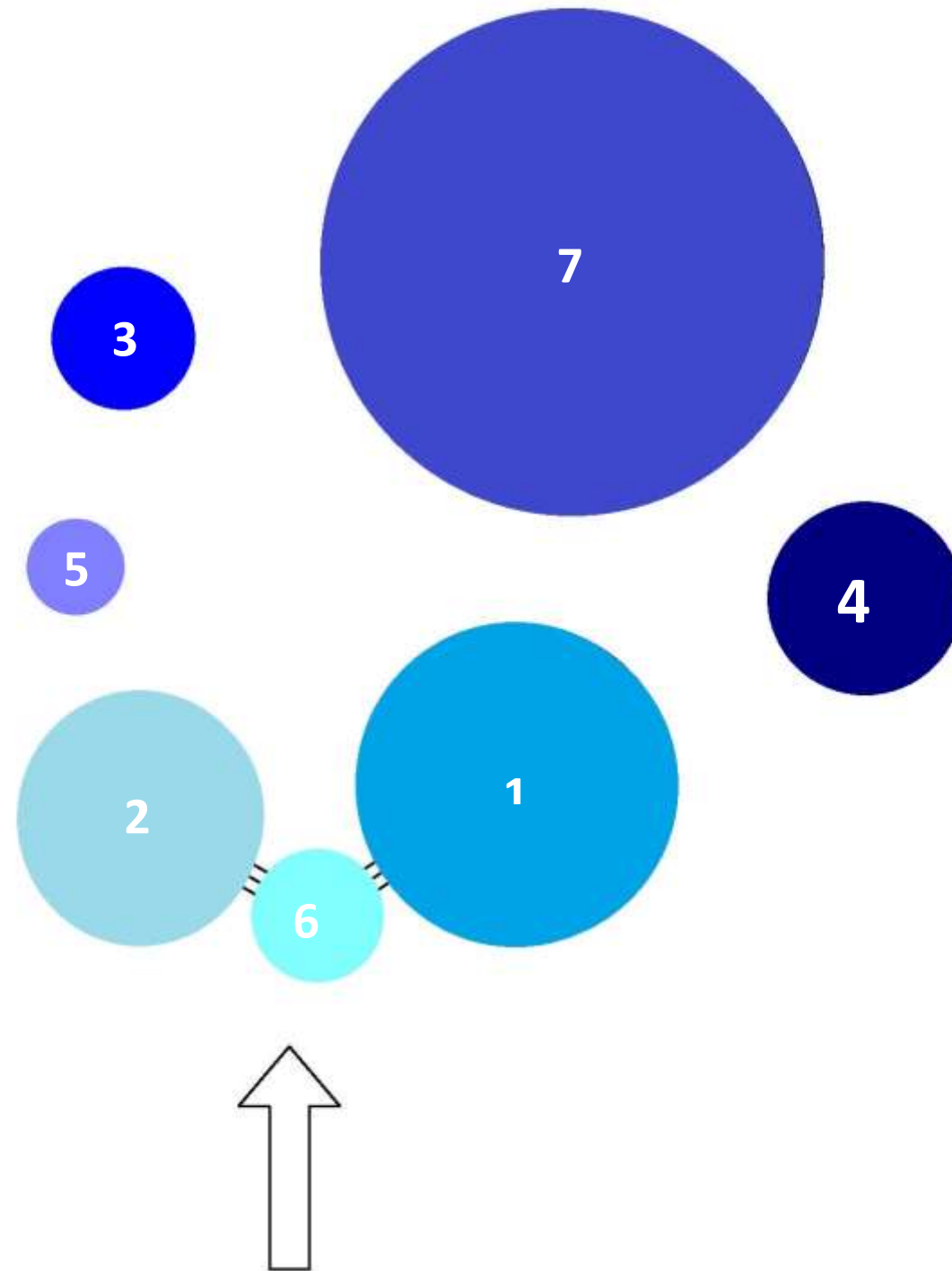
Bienenstock Library Research

- A furniture library
- Largest furniture specialty library in the world
- 5,000 furniture and design archives
- Contains archives that were published as far back as 1640
- Has areas for seminars, classes, events meetings, networking

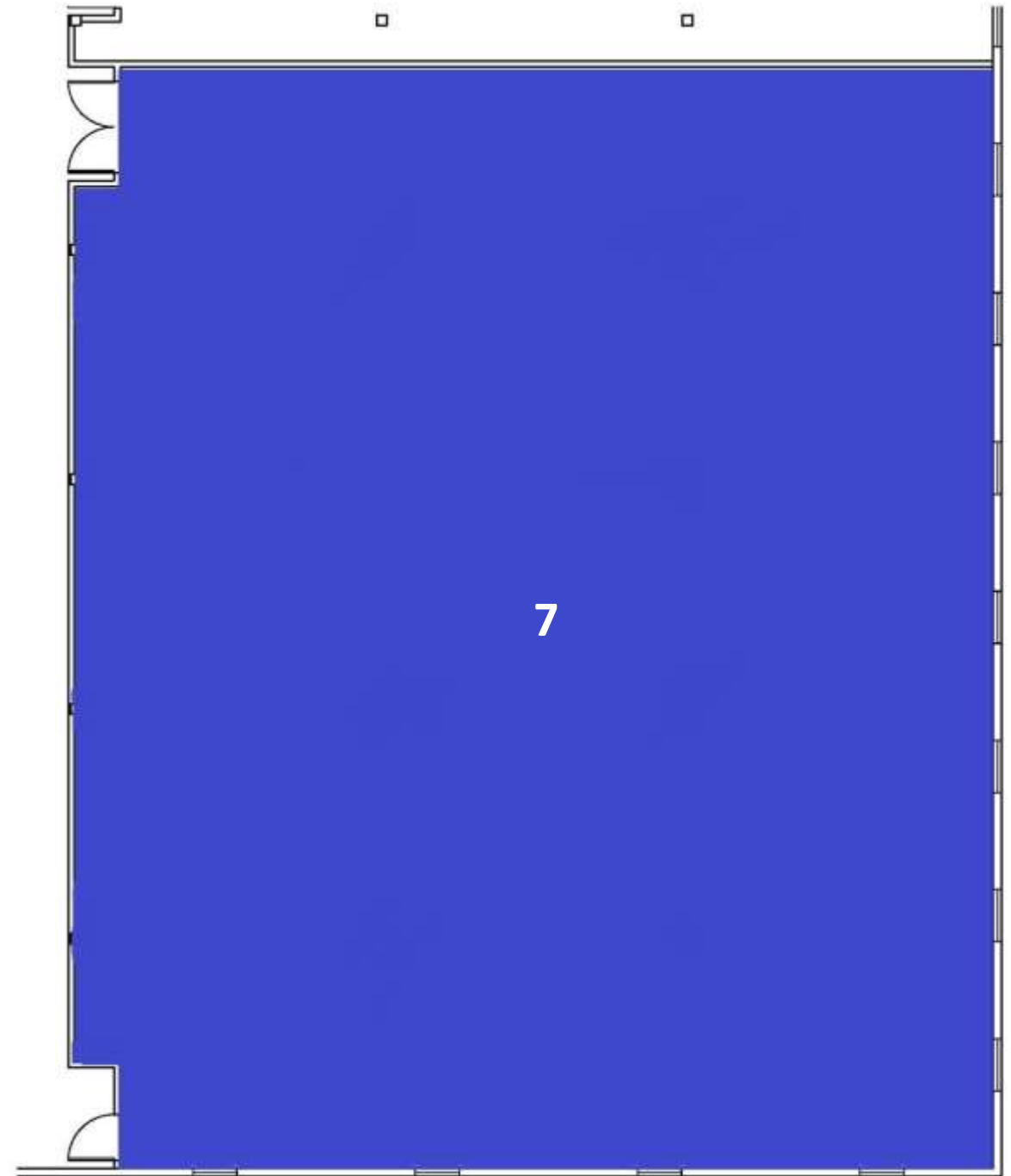
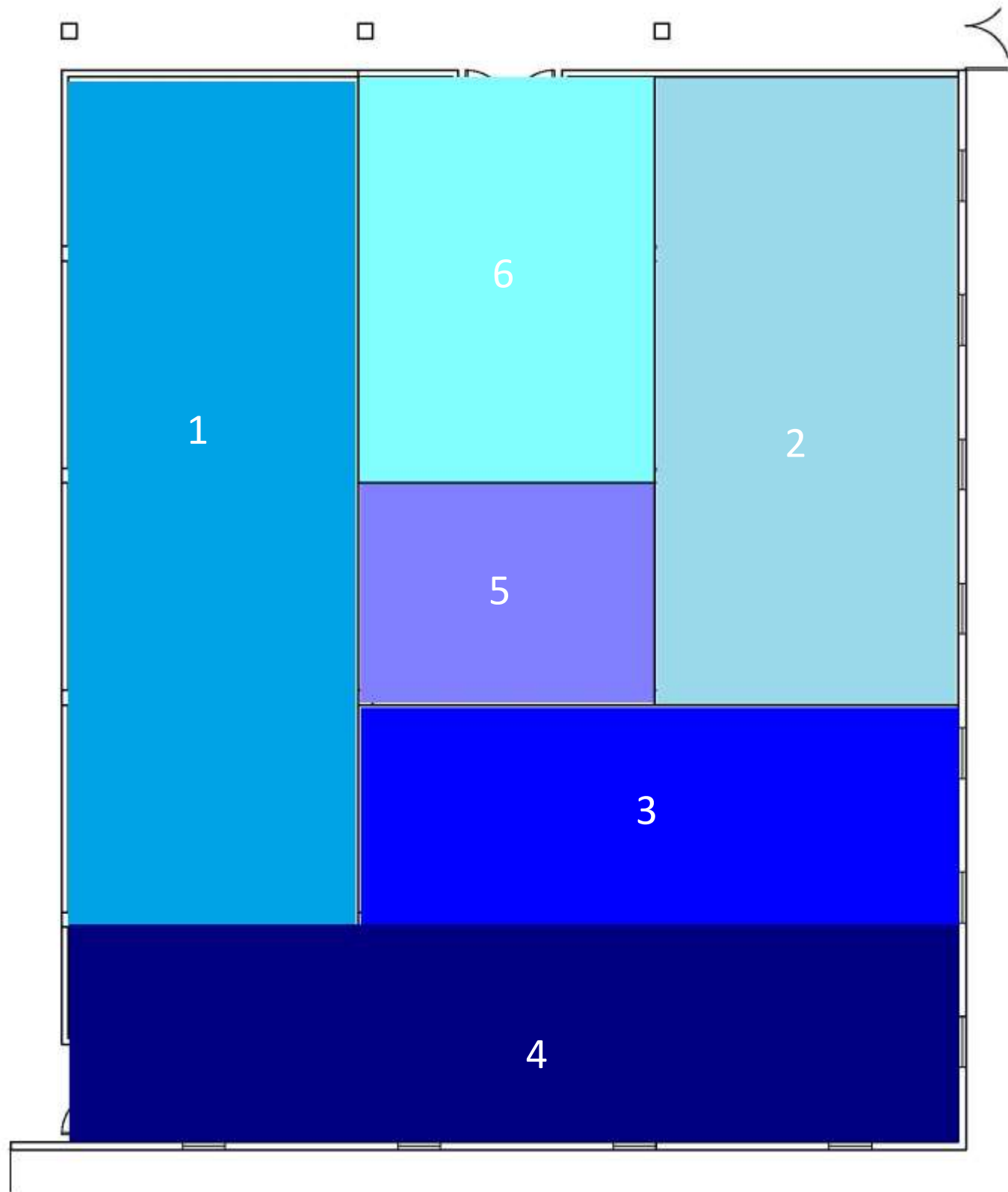


Bubble Diagram

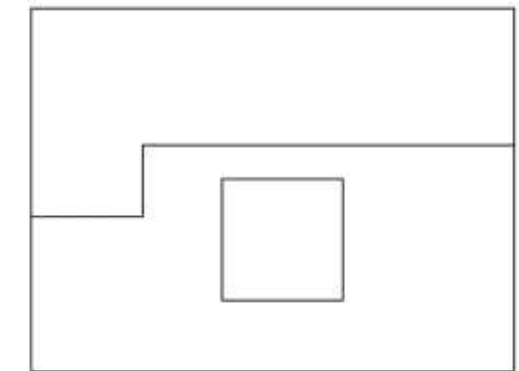
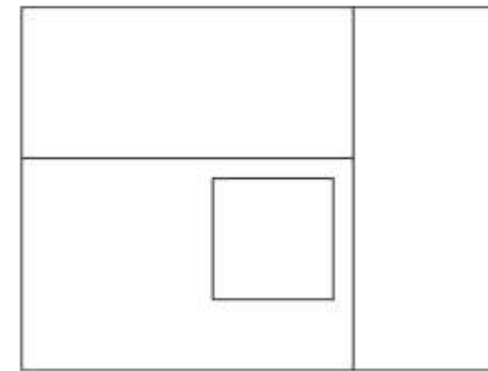
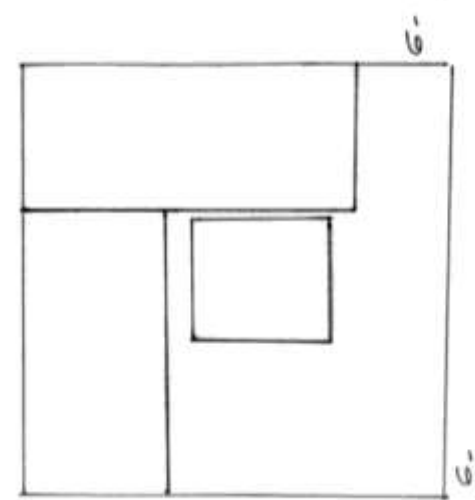
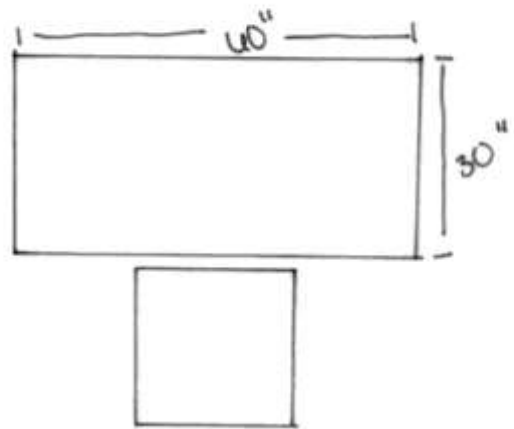
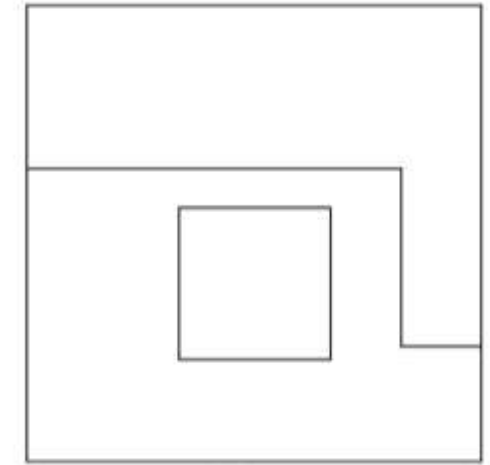
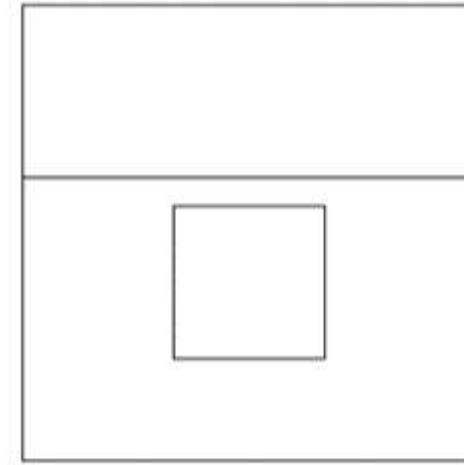
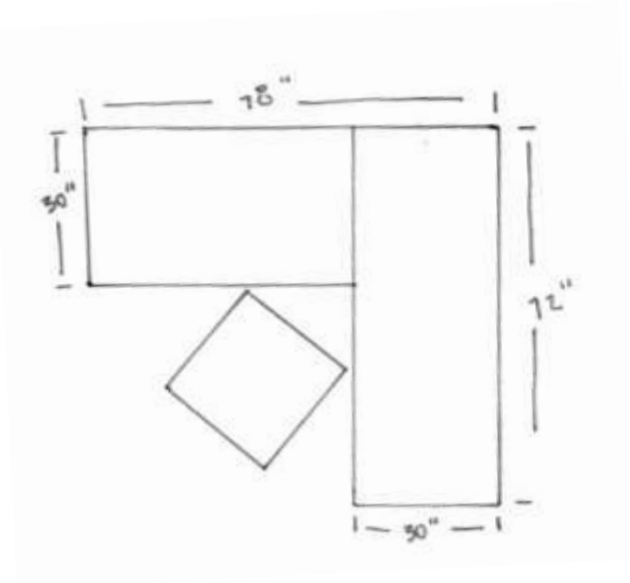
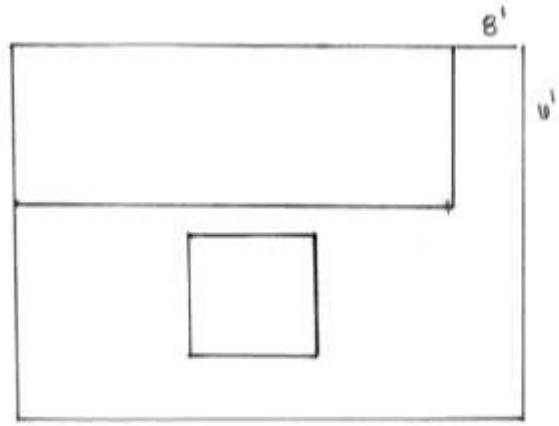
1. Exhibition 924 square feet
2. Large and small conference rooms 1,170 square feet
3. Pantry and barista 523 square feet
4. Tech and work room 862 square feet
5. Director and administrative assistant 338 square feet
6. Reception and waiting 462 square feet
7. Guest research and visiting fellows 4,472 square feet



Blocking Diagram

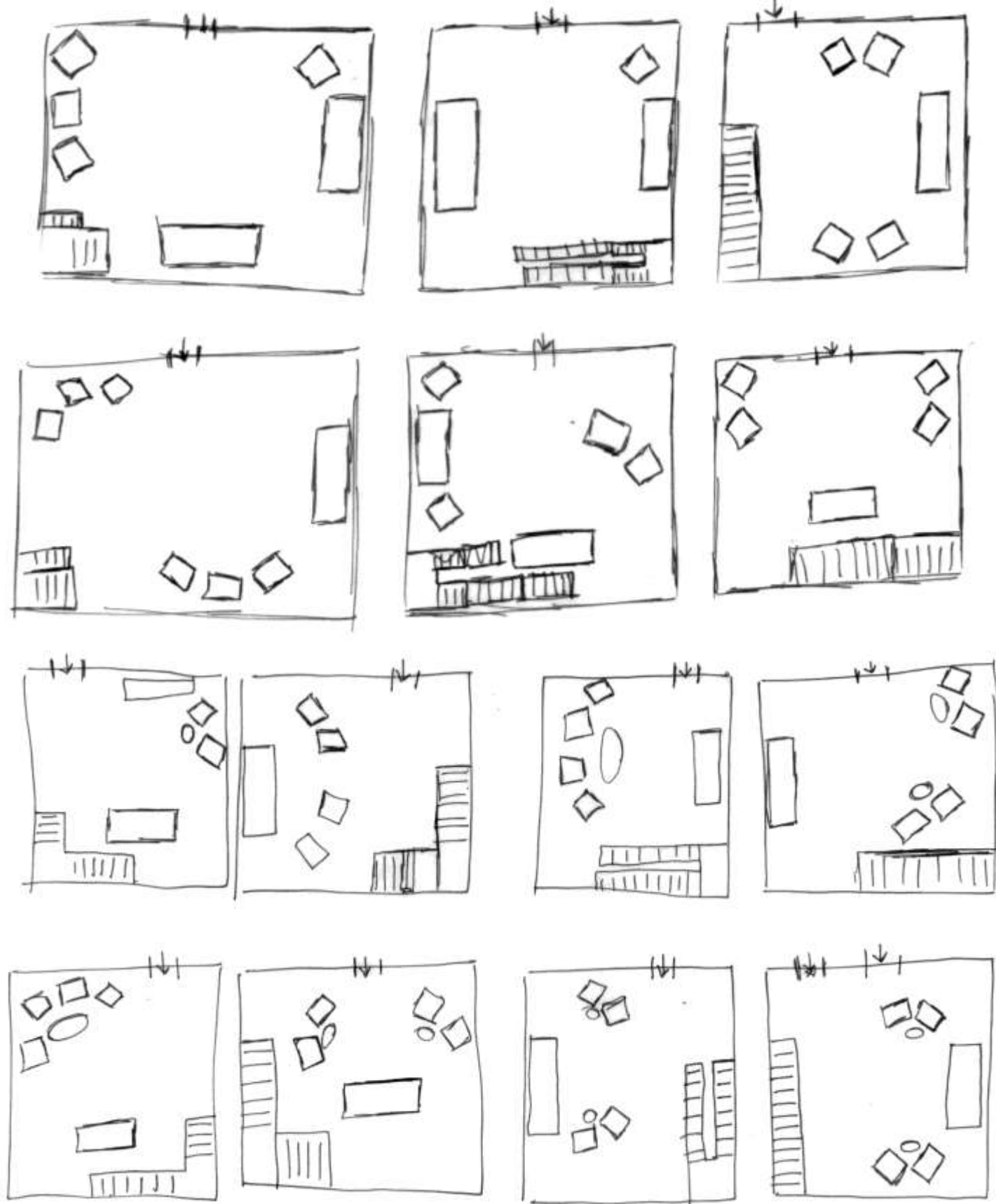


Space Standard Drawings

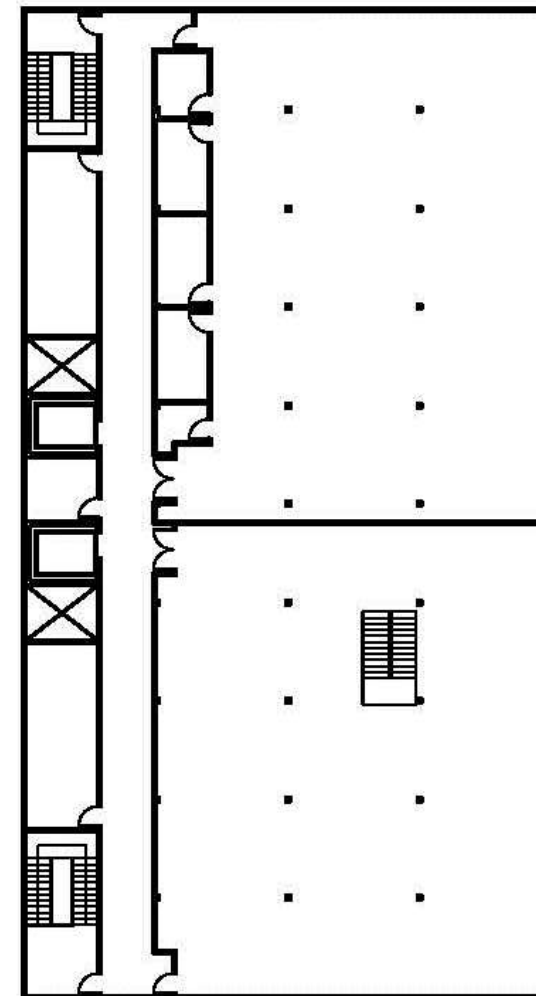
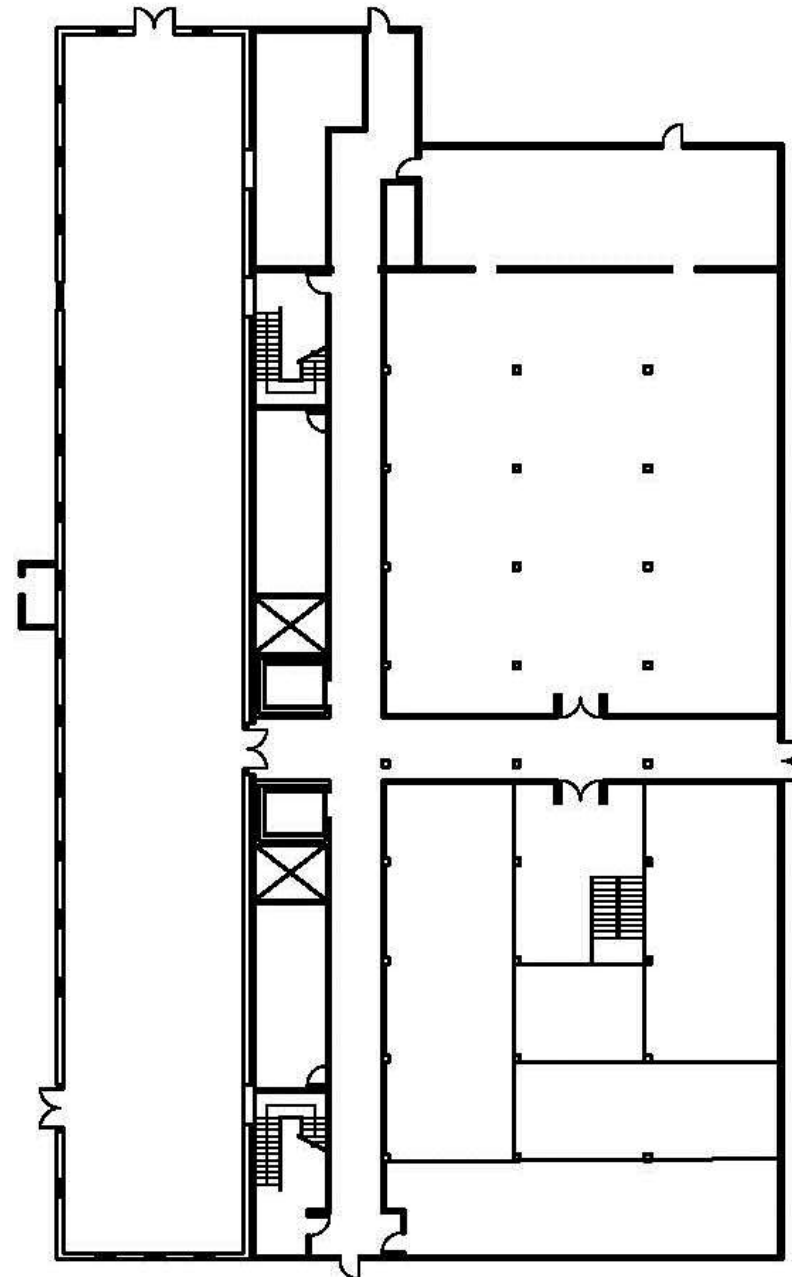
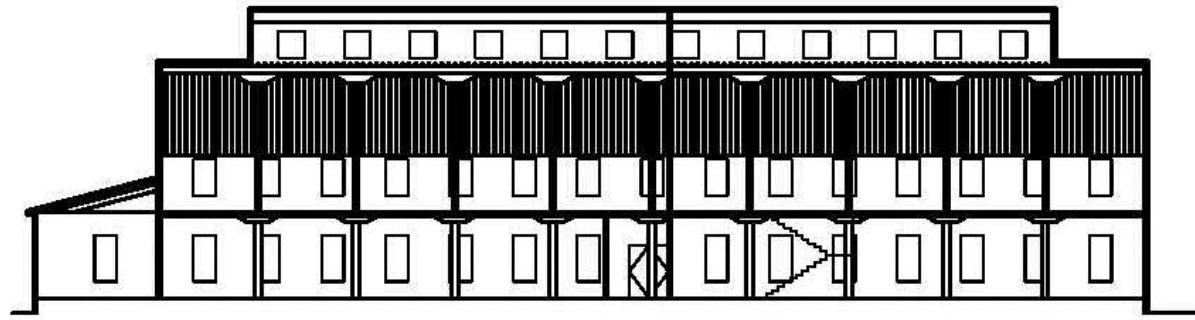


Assignment 3: Plan and Sections

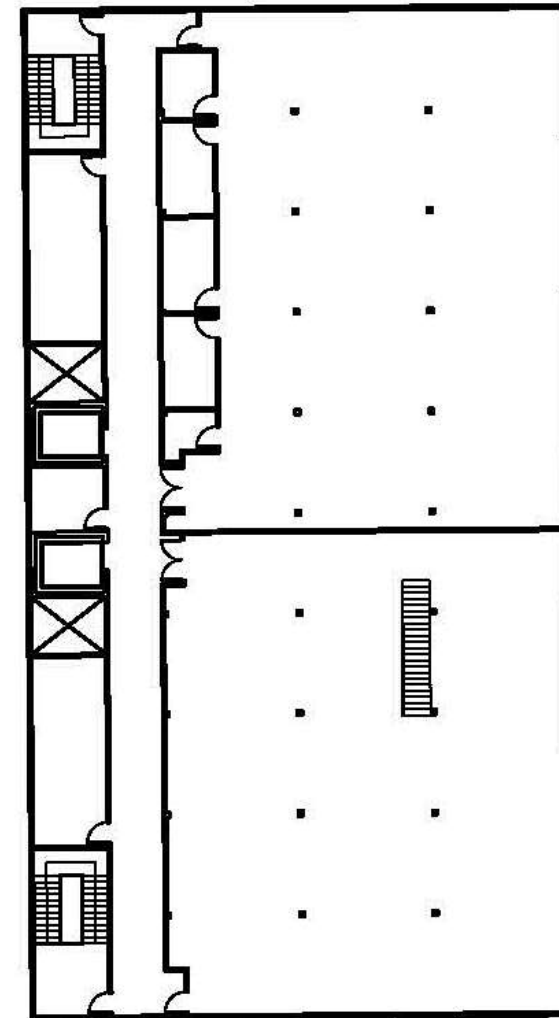
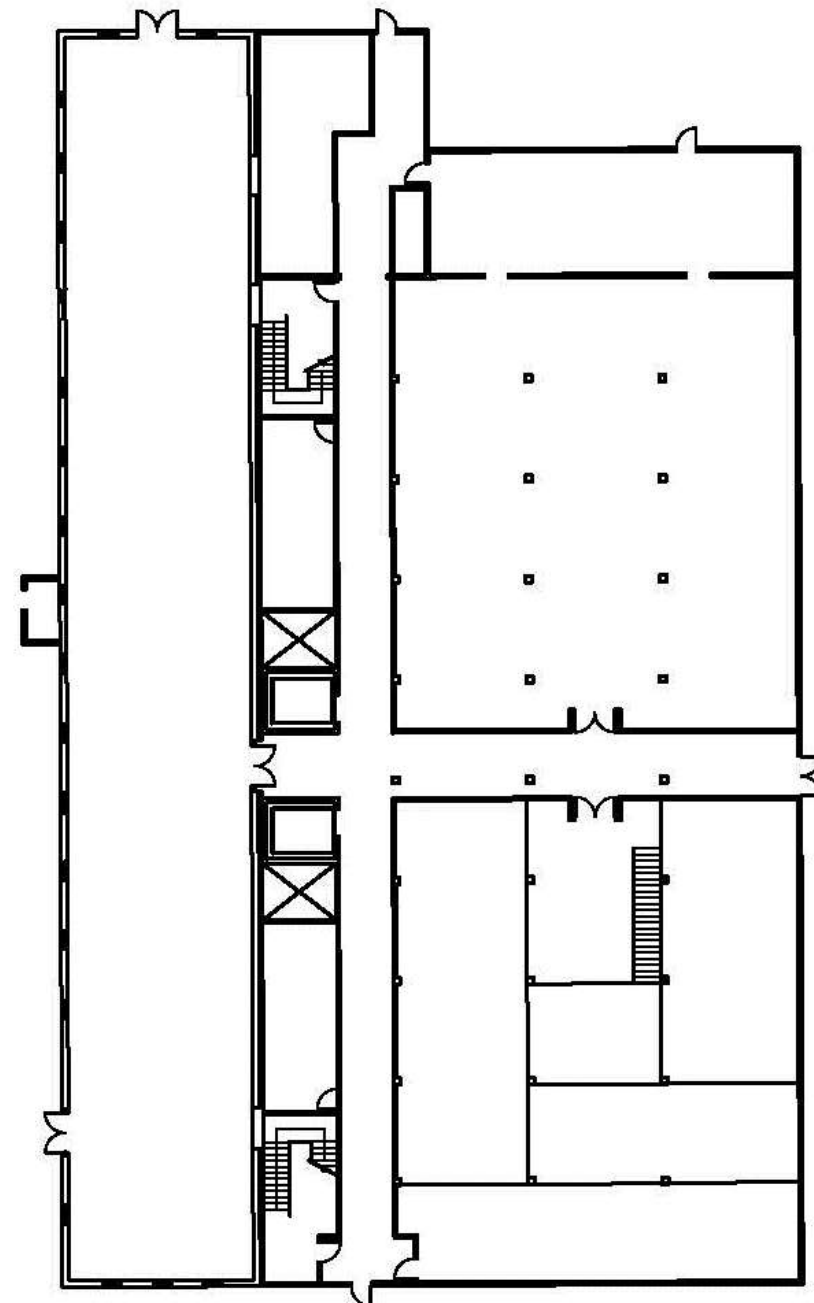
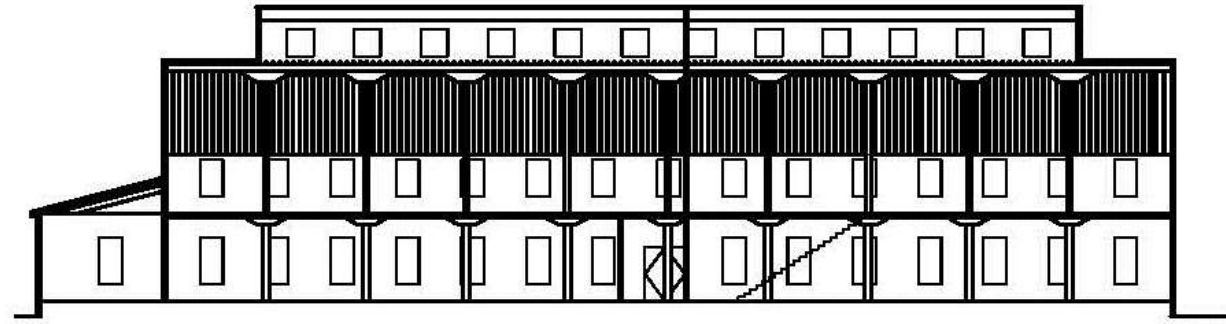
Sketches



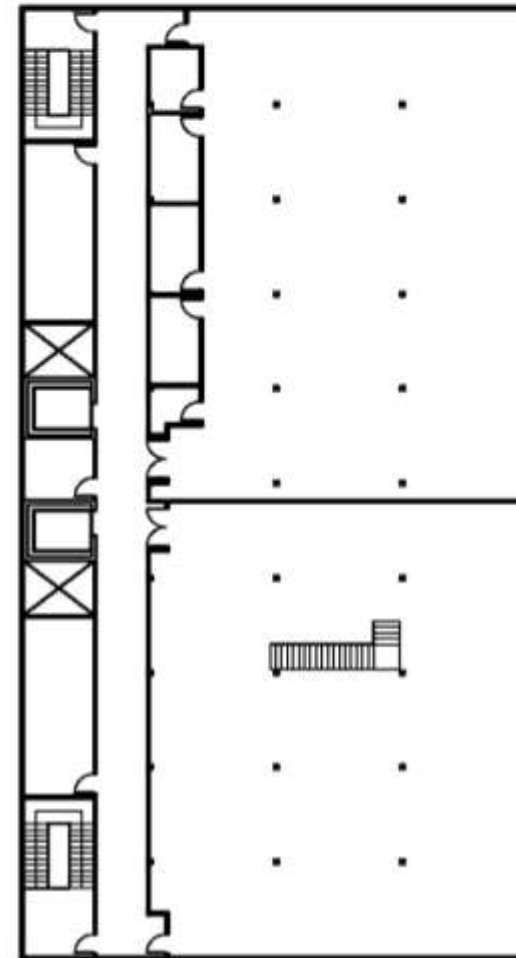
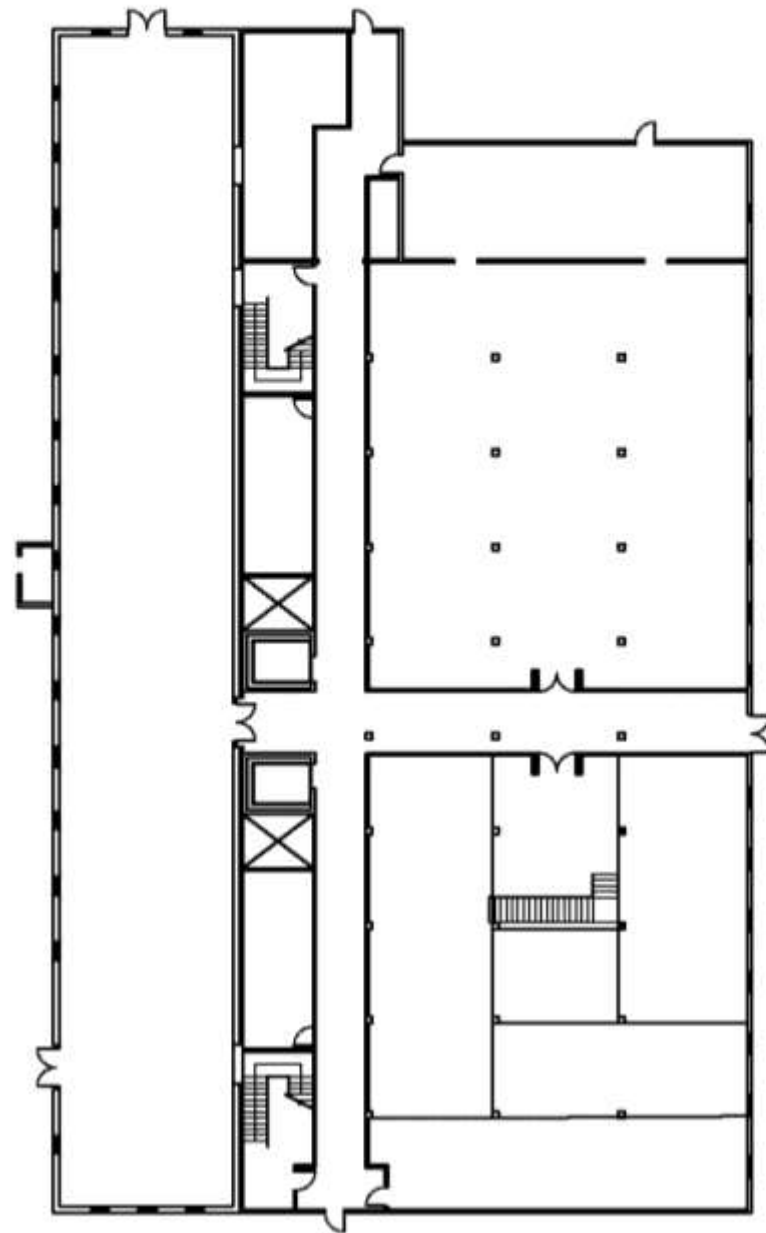
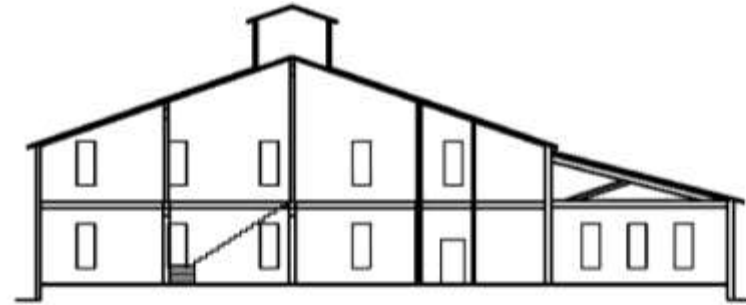
Scissor stairs



Straight stairs



L shape stairs



Assignment 4

Scissor stair view 1



Scissor stair view 2



L shape stair view 1



L shape stair view 2



Straight stair view 1



Straight stair view 2

