

Portfólio 1

Jacqueline Rossi

Charles Gustina

Client Profile

The Gateway Center is a resource center for exploring the design history of the coastal south. Located in Greenville NC, the Center is a partnership between the North Carolina Department of Natural and Cultural Resources and East Carolina University's Department of History, with major funding from the Golden LEAF Foundation.

This state-of-the-art facility allows visitors and scholars to research the rich history of the region, as evidenced by the implements and furnishings used by residents. Research published and programs conducted by the Center paint a detailed portrait of everyday life in the area

The Center includes:

- Visitor reception area
- Exhibition space
- Meeting rooms with full audio/video capabilities
- Facilities for researchers
- Documentation workroom

Program Spreadsheet

Gateway Center

PERSONNEL

| Position | Personnel Totals | | Unit Square Ft. | | Extended Sq. Feet | Equipment | | | Notes |
|--------------------------|------------------|-----------|-----------------|-------------|-------------------|-----------|----------|----------|--|
| | Current | Future | Office | Workstation | | PC | Printer | Fax | |
| | | | | | 0 | | | | |
| Director | 0 | 1 | 120 | | 120 | 1 | 1 | | |
| | | | | | 0 | | | | |
| Administrative Assistant | 0 | 1 | | 100 | 100 | 1 | 1 | | Locate directly outside Dir office |
| | | | | | 0 | | | | |
| Receptionist | 0 | 1 | | 0 | 0 | 1 | 1 | | Included in Reception/Waiting |
| | | | | | 0 | | | | |
| Visiting Fellows | 0 | 8 | | 48 | 384 | 8 | | | Locate away from Entry; 1 Shared printer |
| | | | | | 0 | | | | |
| Guest Research Stations | 0 | 70 | | 36 | 2520 | | | | May be split up; 1 Shared printer |
| | | | | | 0 | | | | |
| Technicians | 0 | 2 | 100 | | 200 | 4 | 2 | | Locate near Workroom |
| | | | | | 0 | | | | |
| Barista | 0 | 1 | | | 0 | | | | Included in Pantry |
| | | | | | 0 | | | | |
| Personnel Totals: | 0 | 84 | | | 3324 | 15 | 5 | 0 | |

Department Summary

Information:
 Personnel 3324 Square Ft.
 Support 2360 Square Ft.
Sub Total: 5684 Square Ft.
 Circulation 1.54
Total Carpetable: 8753 Square Ft.

Interviewee:

Interview Date:
 Revision Submitted:
 Sign Off: _____

SUPPORT SPACES

| Space | Support/Equipment | | Unit Square Feet | | Extended Sq. Feet | Location | Notes |
|------------------------|-------------------|--------|------------------|-----|-------------------|--|--|
| | Current | Future | | | | | |
| | | | | | 0 | | |
| Reception/Waiting Area | 0 | 1 | | 300 | 300 | Inside main entry; Visible from Admin Asst | Seating for 4 guests |
| | | | | | 0 | | |
| Large Conference Room | 0 | 1 | | 400 | 400 | Close to main entry | Seating for 14 at table, 6 at side; Full A/V |
| | | | | | 0 | | |
| Small Conference Room | 0 | 3 | | 120 | 360 | Adjacent to Large Conference | Seating for 4-6; Full A/V |
| | | | | | 0 | | |
| Workroom | 0 | 1 | | 360 | 360 | Locate away from Entry | Counter space and work tables |
| | | | | | 0 | | |
| Storage | 0 | 1 | | 100 | 100 | May be split and scattered through the space | |
| | | | | | 0 | | |
| Pantry | 0 | 1 | | 240 | 240 | | |
| | | | | | 0 | | |
| Exhibition Space | 0 | 1 | | 600 | 600 | Close to main entry | Some walls for hanging work |
| Support Totals: | | | | | 2360 | | |

Department Notes:

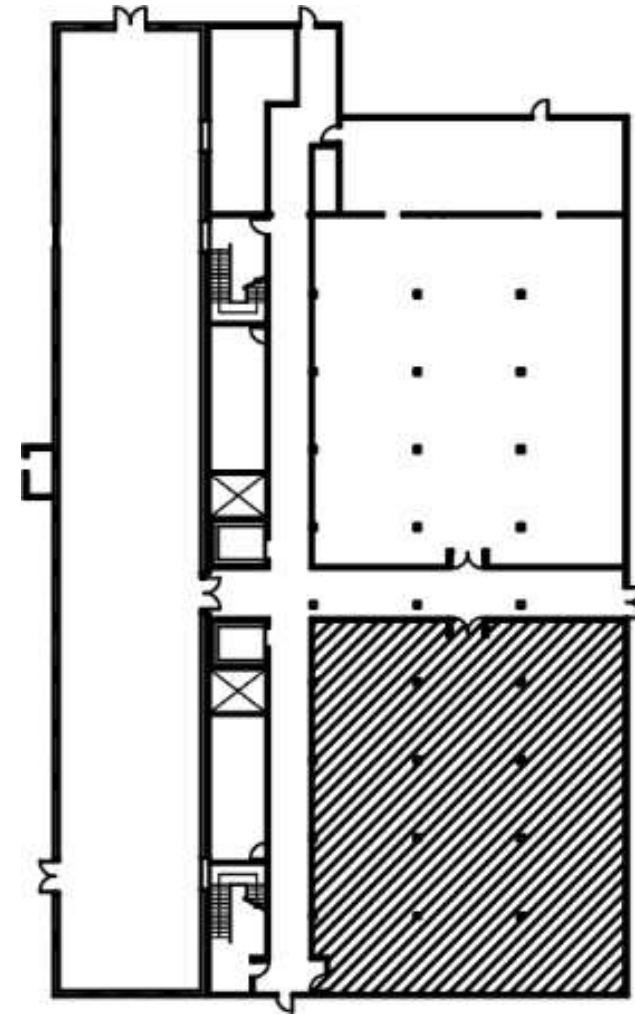
Historic character important to users
 Space must be flexible

Site Profile

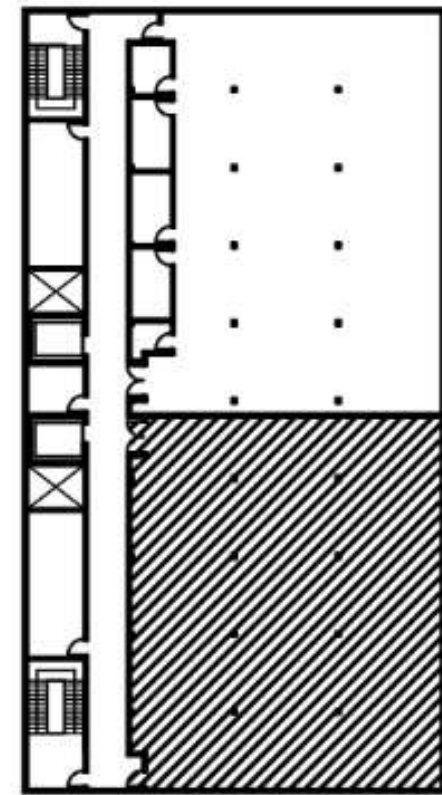
- Pritchard-Hughes Tobacco Building
- Pitt and 11th Streets
Greenville NC
- Erected: first quarter of the Twentieth Century
- Heavy timber construction
- Client to occupy tenant space on first and second floors



Building Exterior

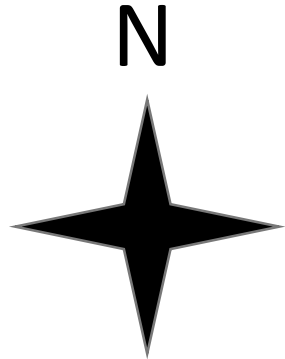


1st Floor Tenant Area
4,280 Square Feet



2nd Floor Tenant Area
4,280 Square Feet

Site Analysis



The sun rises on the East side and sets on the West side. The North side receives no direct sunlight, the South side receives continuous sunlight.

Site Analysis



Research

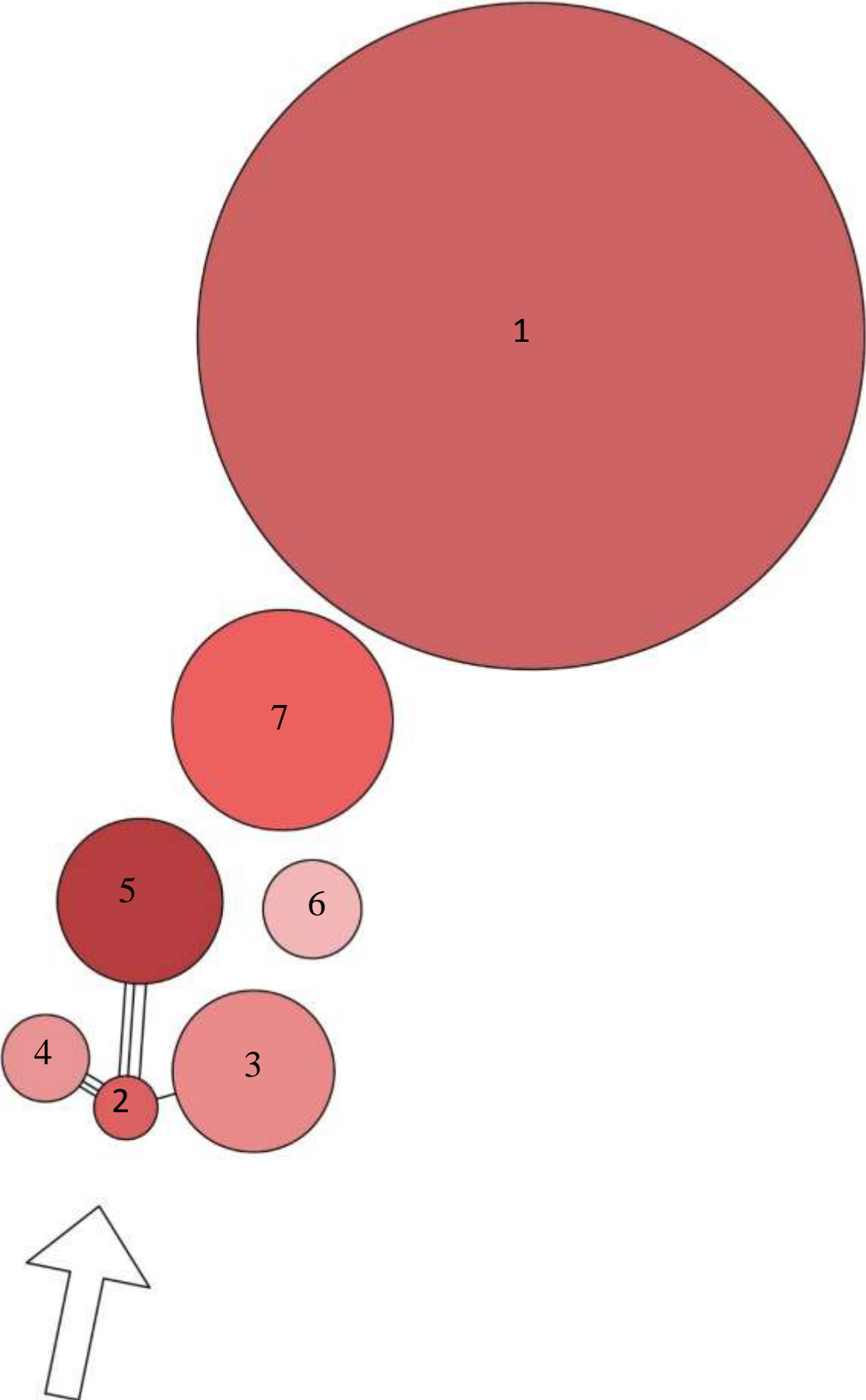
Historic Overview of the Coastal South

- Settled by the English in 1670, South Carolina became the eighth state to ratify the U.S. constitution in 1788. Its early economy was largely agricultural, benefitting from the area's fertile soil, and plantation farmers relied on the slave trade for cheap labor to maximize their profits.
- By 1730, people of African descent made up two thirds of the colony's population. South Carolina became the first state to secede from the union in 1861, and was the site of the first shots of the Civil War—the shelling of the federally held Fort Sumter by Confederate troops on April 12, 1861.
- Today, South Carolina coastline near Myrtle Beach has developed into one of the premiere resort destinations on the East Coast, and has over 100 golf courses.

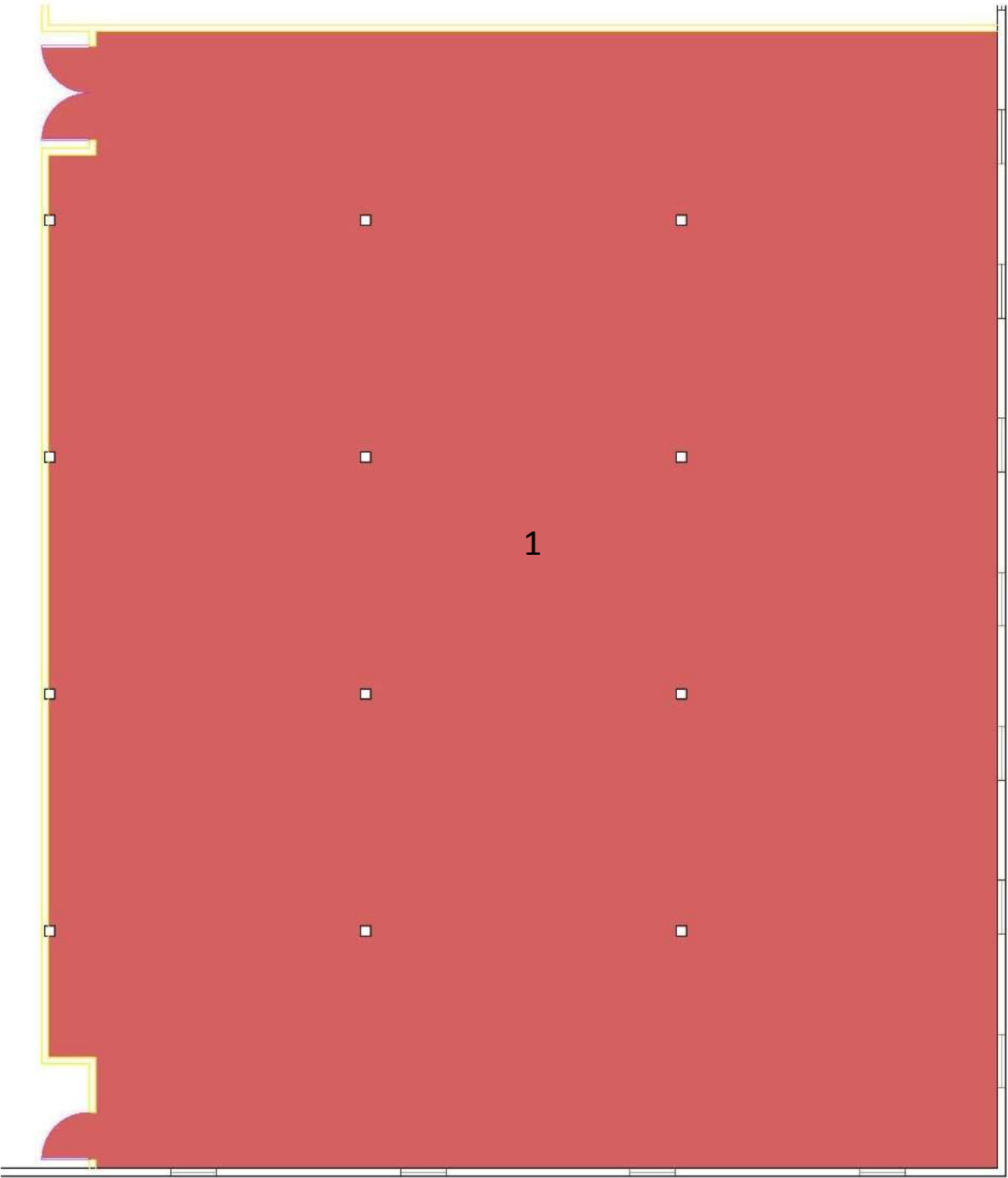
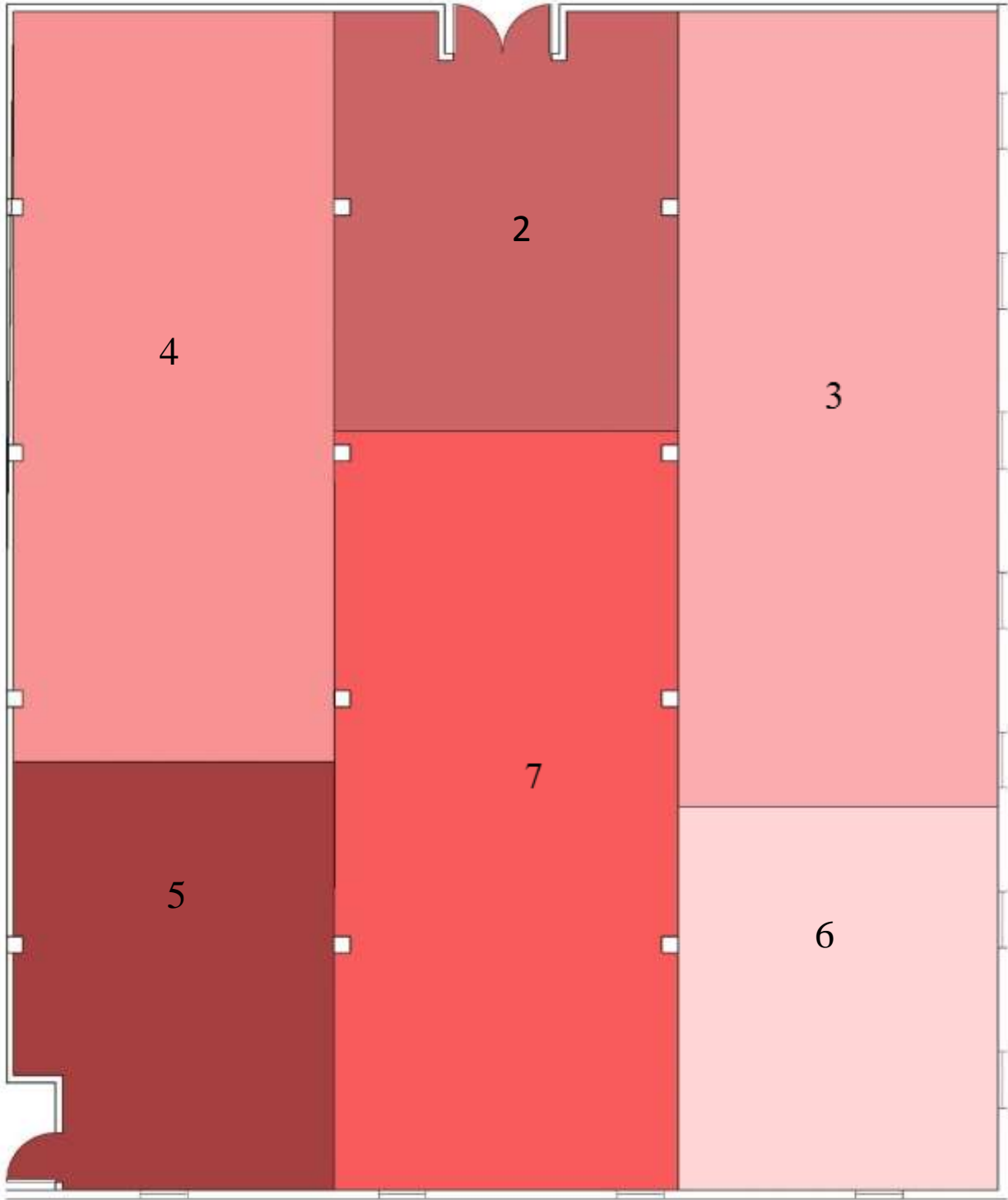


Bubble Diagram

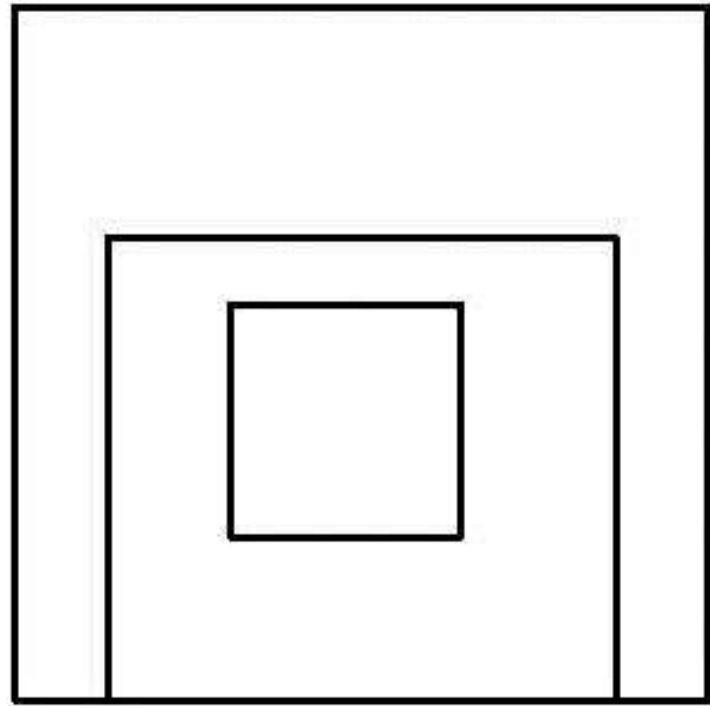
- 1. Visiting Fellows & Guest Research Stations: 4,472.16 sq. ft.
- 2. Reception: 462 sq. ft.
- 3. Large & Small Conference Rooms: 1,170.4 sq. ft.
- 4. Exhibition Space: 934 sq. ft.
- 5. Technicians & Workroom: 862.4 sq. ft.
- 6. Pantry, Storage, & Barista: 523.6 sq. ft.
- 7. Director & Administrative Assistant: 338 sq. ft.



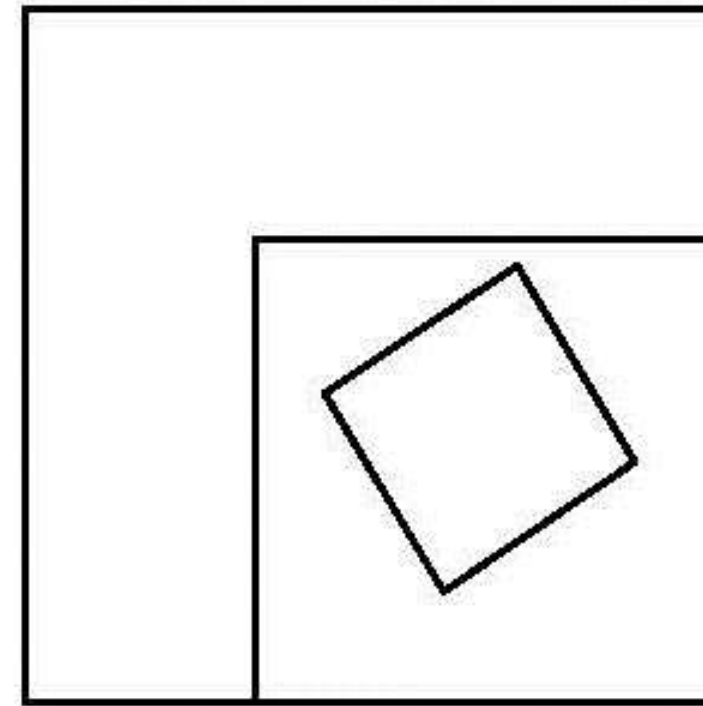
Blocking Diagram



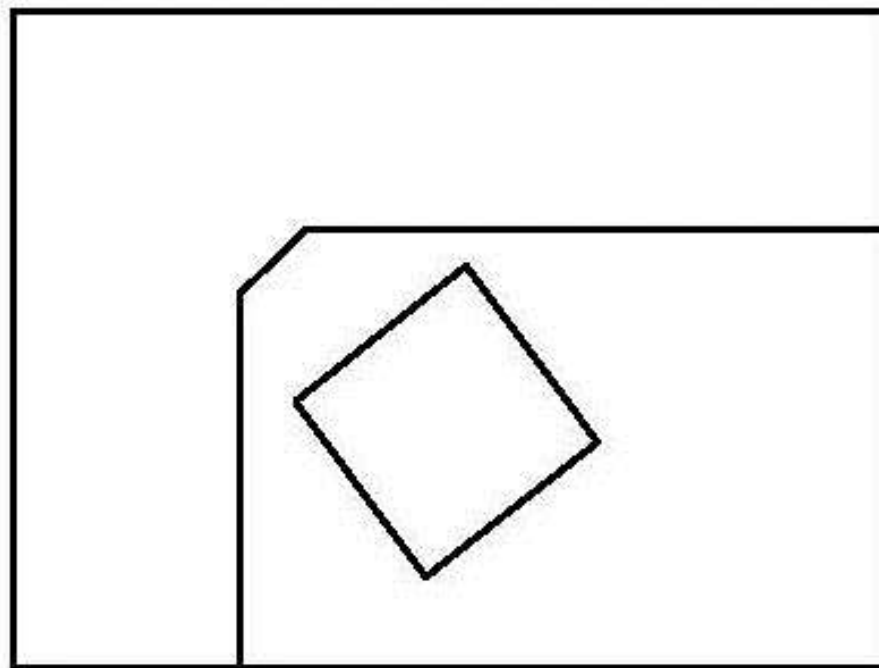
Space Standard Drawing



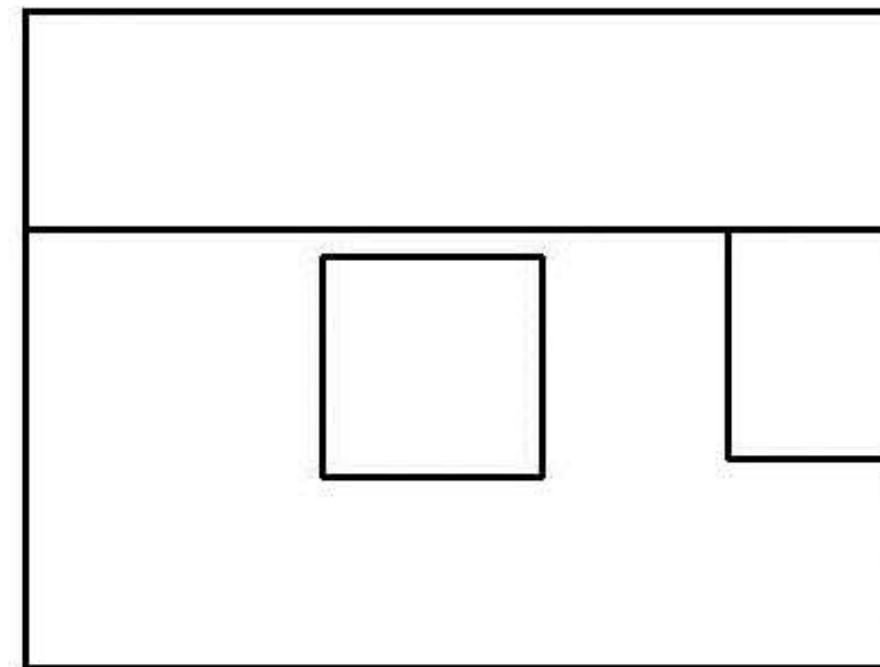
6x6 option A



6x6 option B

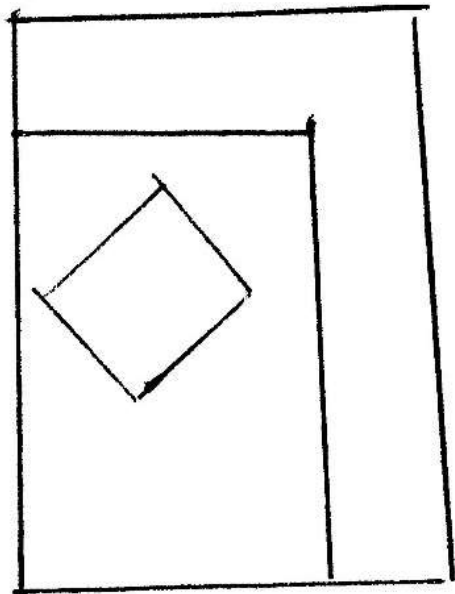
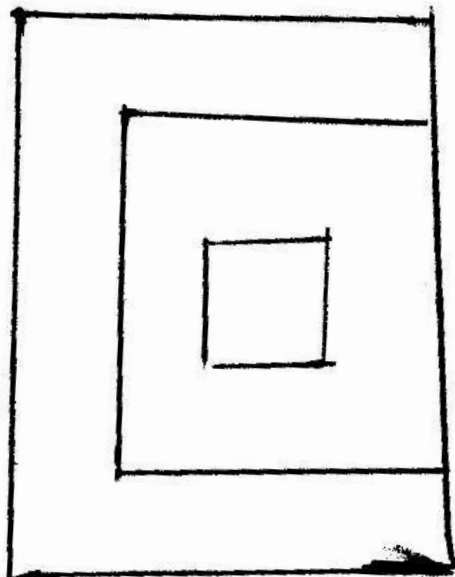
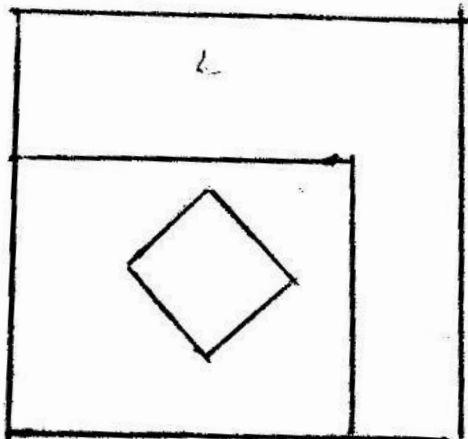
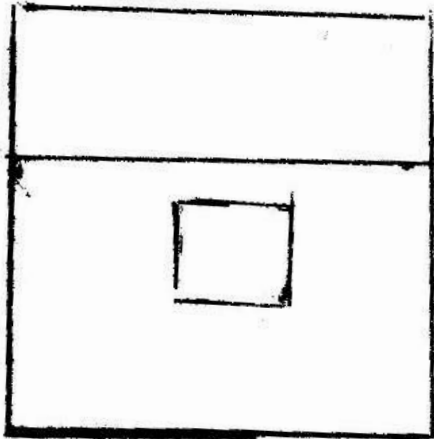


6x8 option A

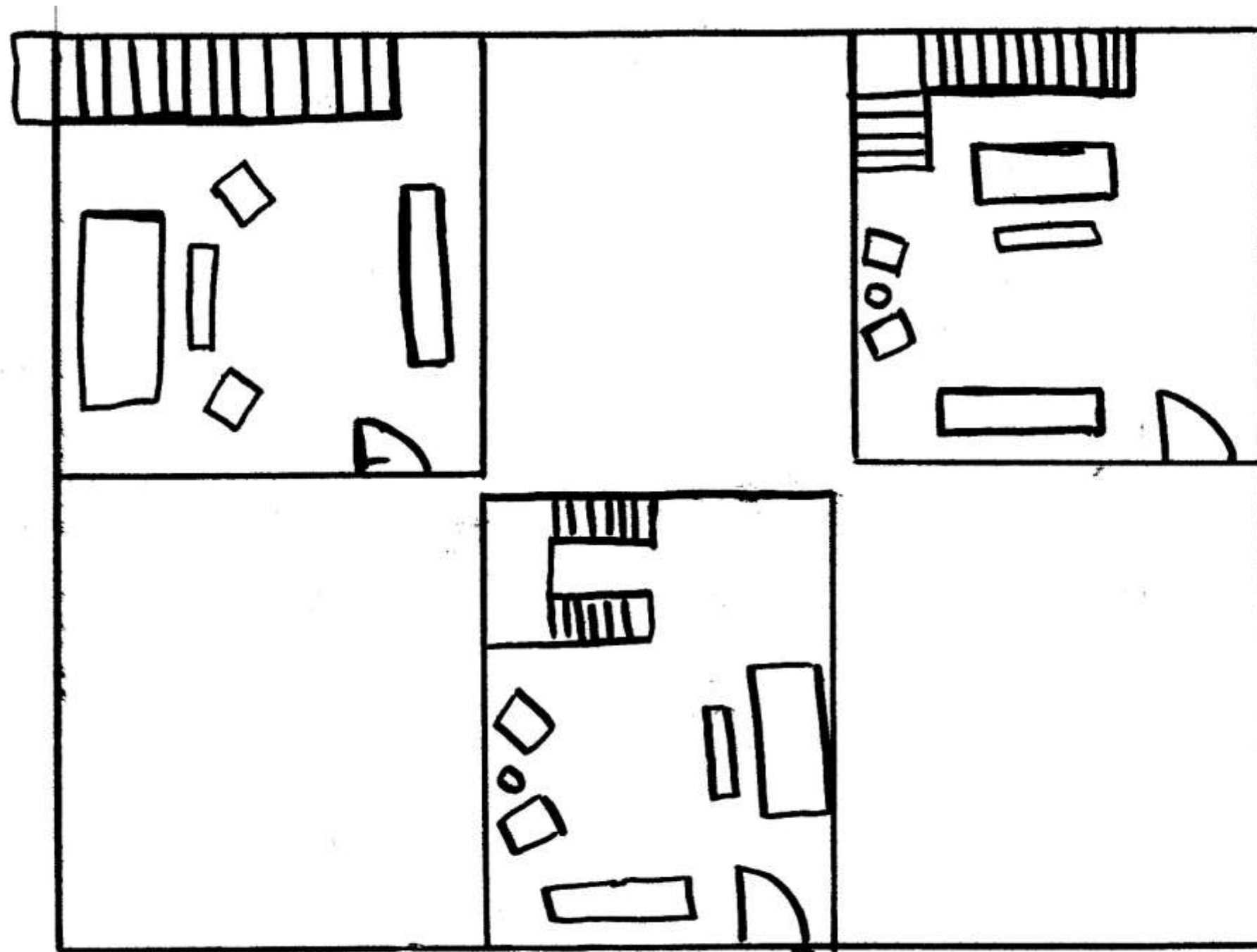


6x8 option B

Space Standard Drawing Sketches

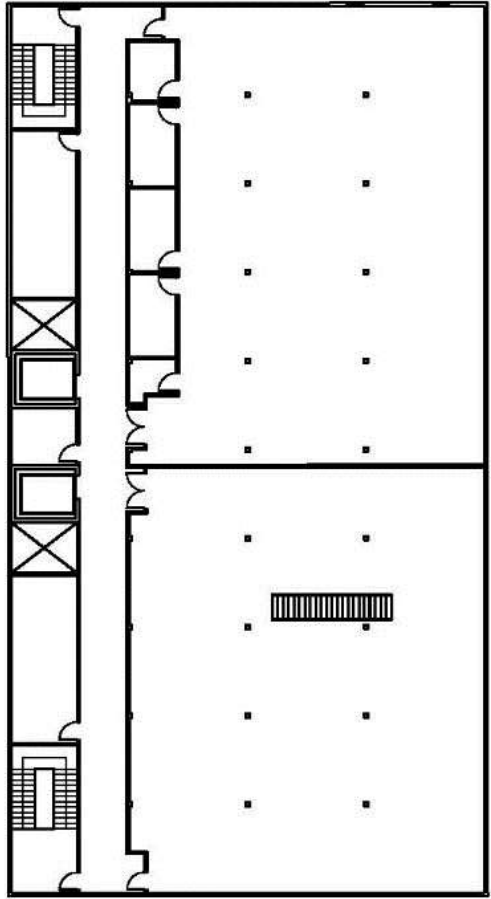
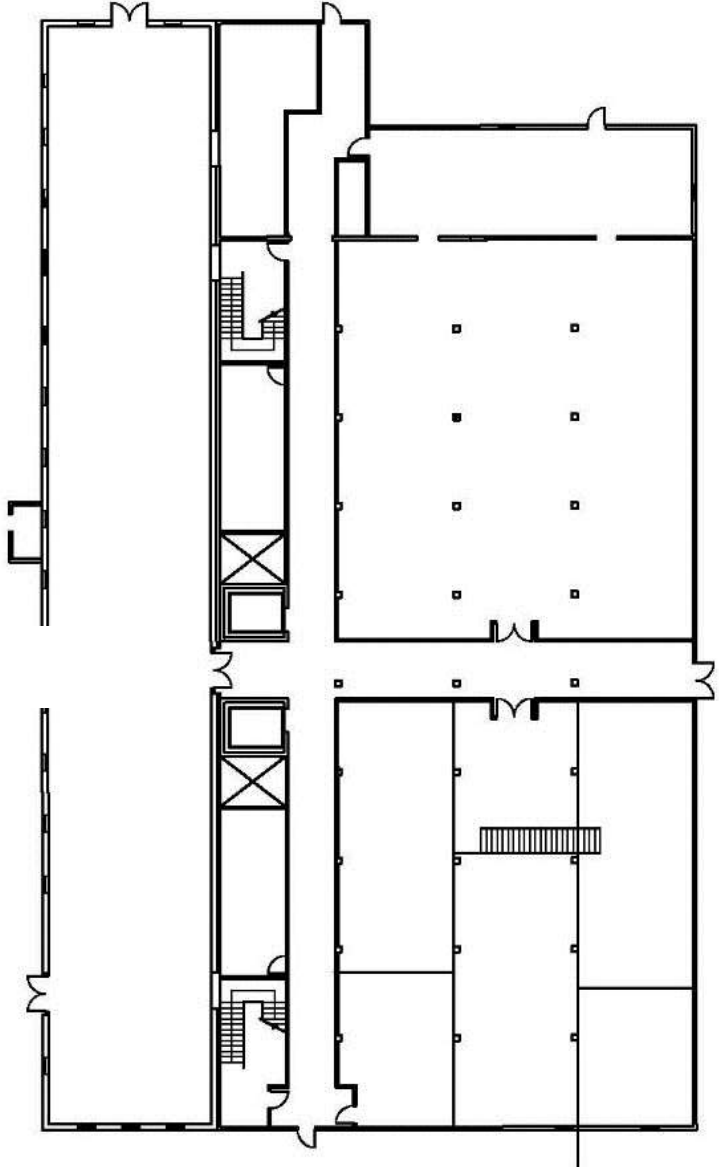
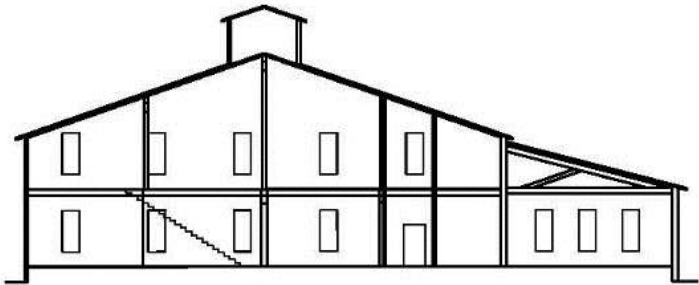


Assignment 3 sketches



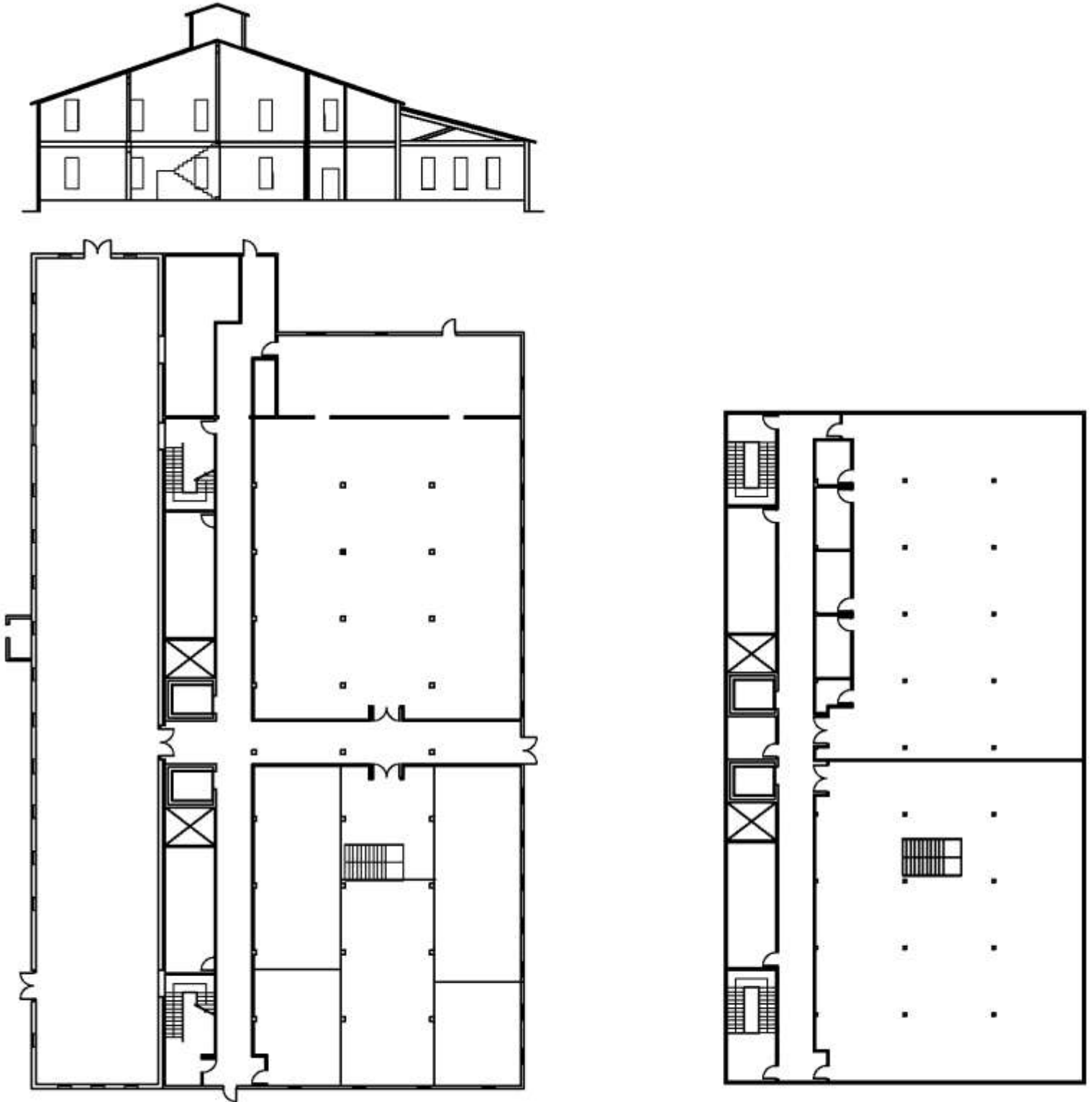
Assignment 3

- Straight Stair



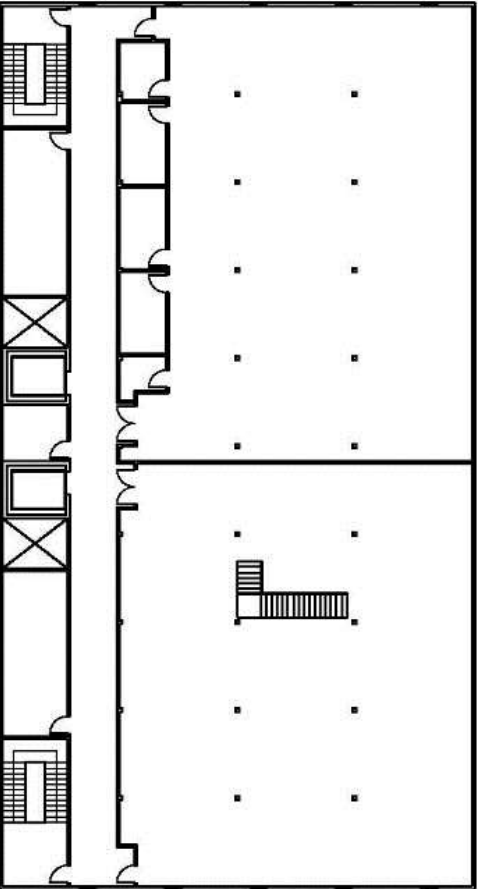
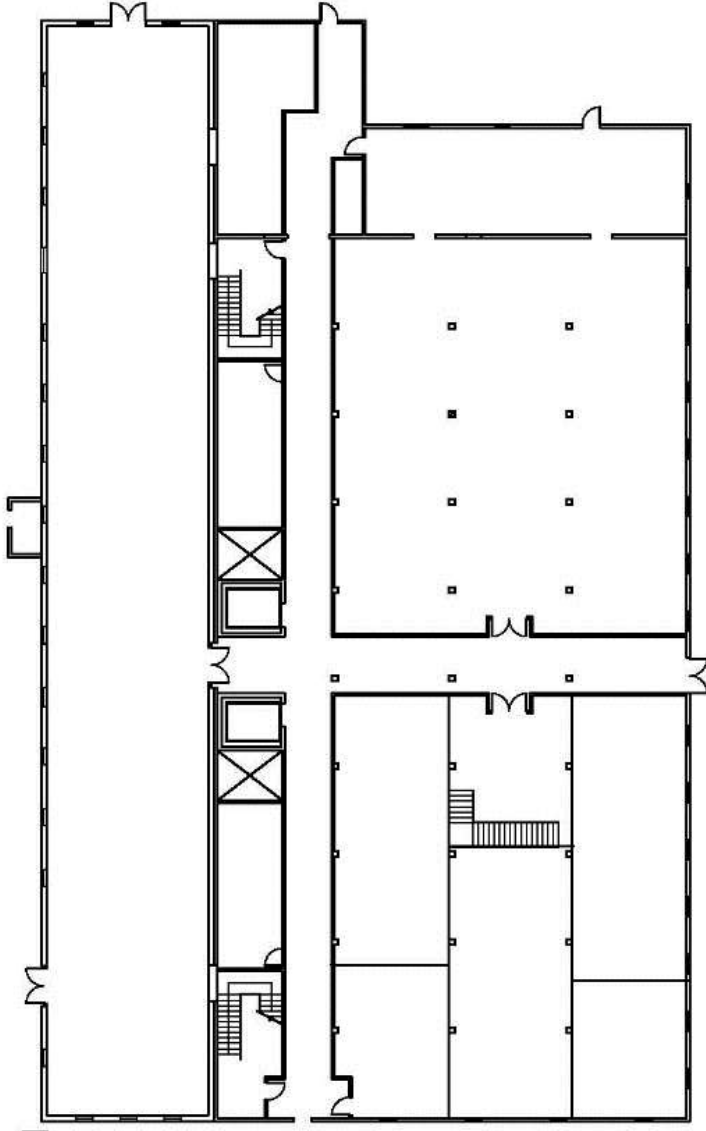
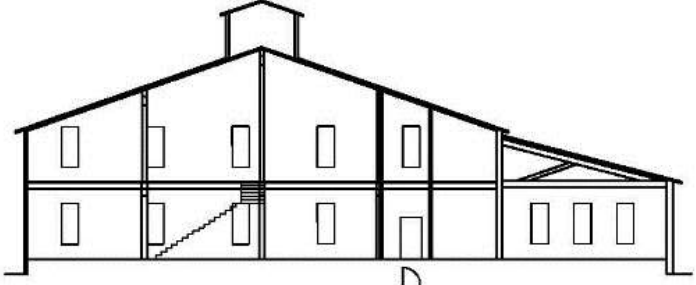
Assignment 3

- Scissor Stair



Assignment 3

- L Stair



Assignment 4

- L stair



Assignment 4

- L stair



Assignment 4

- Straight Stair



Assignment 4

- Straight Stair



Assignment 4

- Scissor Stair



Assignment 4

- Scissor Stair

