

# Portfolio One



Jonah Taylor  
IDSN 2102 Interior Design  
Mr. Charles Gustina  
East Carolina University

## Client Profile

The Gateway Center is a resource center for exploring the design history of the coastal south. Located in Greenville NC, the Center is a partnership between the North Carolina Department of Natural and Cultural Resources and East Carolina University's Department of History, with major funding from the Golden LEAF Foundation.

This state-of-the-art facility allows visitors and scholars to research the rich history of the region, as evidenced by the implements and furnishings used by residents. Research published and programs conducted by the Center paint a detailed portrait of everyday life in the area

The Center includes:

- Visitor reception area
- Exhibition space
- Meeting rooms with full audio/video capabilities
- Facilities for researchers
- Documentation workroom



# Program Spreadsheet

## Gateway Center

### PERSONNEL

Position	Personnel Totals		Unit Square Ft.		Extended Sq. Feet	Equipment			Notes
	Current	Future	Office	Workstation		PC	Printer	Fax	
					0				
Director	0	1	120		120	1	1		
					0				
Administrative Assistant	0	1		100	100	1	1		Locate directly outside Dir office
					0				
Receptionist	0	1		0	0	1	1		Included in Reception/Waiting
					0				
Visiting Fellows	0	8		48	384	8			Locate away from Entry; 1 Shared printer
					0				
Guest Research Stations	0	70		36	2520				May be split up; 1 Shared printer
					0				
Technicians	0	2	100		200	4	2		Locate near Workroom
					0				
Barista	0	1			0				Included in Pantry
					0				
<b>Personnel Totals:</b>	<b>0</b>	<b>84</b>			<b>3324</b>	<b>15</b>	<b>5</b>	<b>0</b>	

#### Department Summary

##### Information:

Personnel 3324 Square Ft.  
 Support 2360 Square Ft.  
**Sub Total:** 5684 Square Ft.  
 Circulation 1.54  
**Total Carpetable:** 8753 Square Ft.

#### Interviewee:

Interview Date: \_\_\_\_\_  
 Revision Submitted: \_\_\_\_\_  
 Sign Off: \_\_\_\_\_

### SUPPORT SPACES

Space	Support/Equipment		Unit Square Feet		Extended Sq. Feet	Location	Notes
	Current	Future					
					0		
Reception/Waiting Area	0	1		300	300	Inside main entry; Visible from Admin Asst	Seating for 4 guests
					0		
Large Conference Room	0	1		400	400	Close to main entry	Seating for 14 at table, 6 at side; Full A/V
					0		
Small Conference Room	0	3		120	360	Adjacent to Large Conference	Seating for 4-6; Full A/V
					0		
Workroom	0	1		360	360	Locate away from Entry	Counter space and work tables
					0		
Storage	0	1		100	100	May be split and scattered through the space	
					0		
Pantry	0	1		240	240		
					0		
Exhibition Space	0	1		600	600	Close to main entry	Some walls for hanging work
<b>Support Totals:</b>					<b>2360</b>		

#### Department Notes:

Historic character important to users  
 Space must be flexible

---



---



---



---



---



---



---



---



---



---

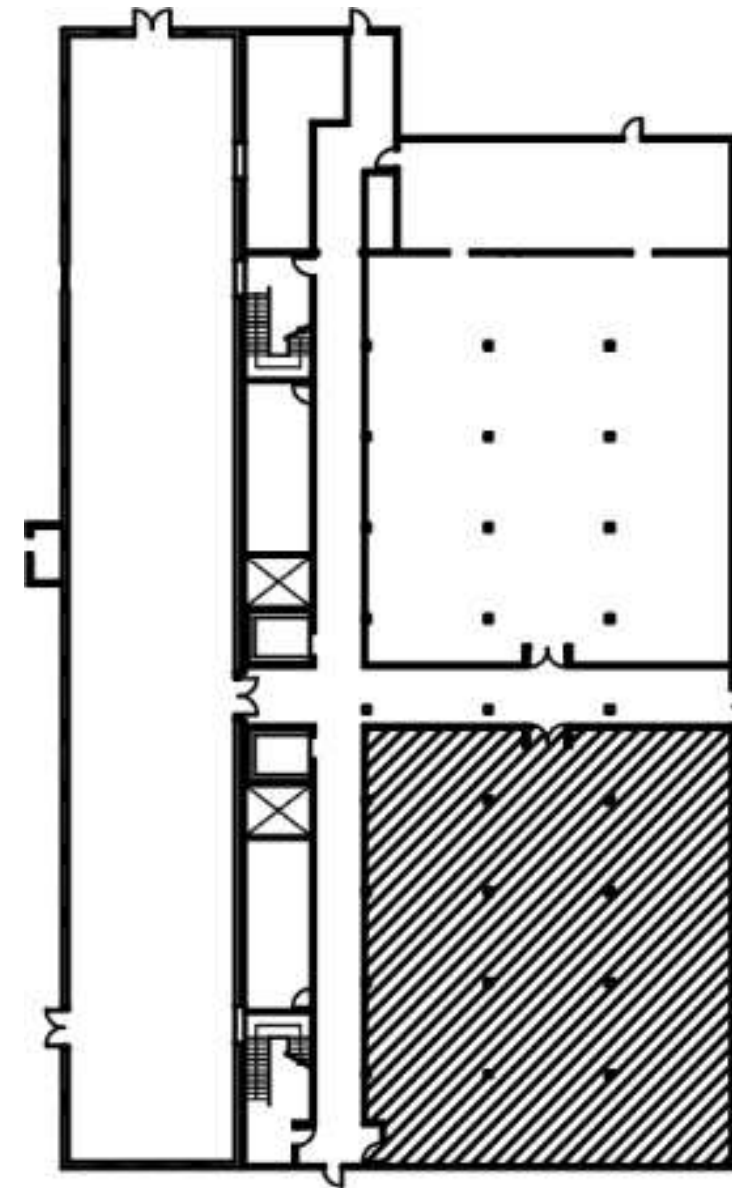


## Site Profile

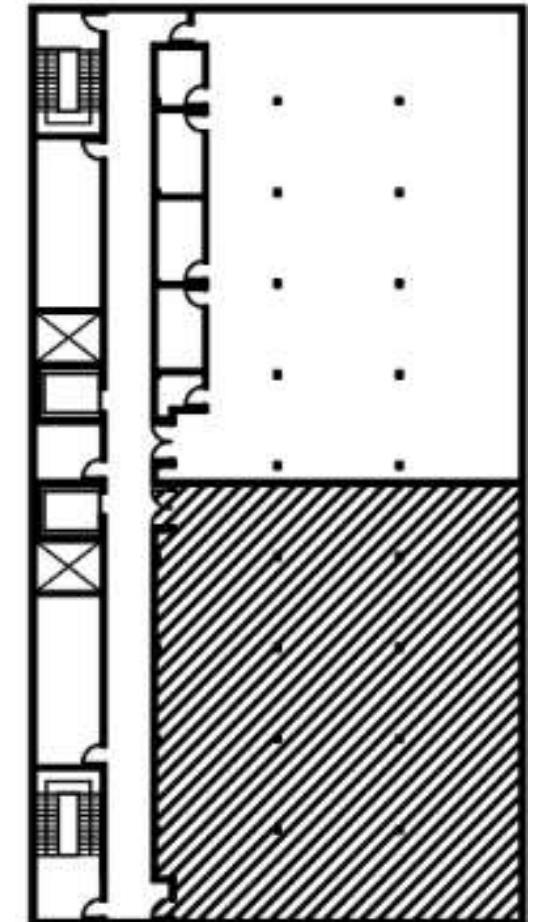
- Pritchard-Hughes Tobacco Building  
Pitt and 11<sup>th</sup> Streets  
Greenville NC
- Erected: first quarter of the Twentieth Century
- Heavy timber construction
- Client to occupy tenant space on first and second floors



Building Exterior



1st Floor Tenant Area  
4,280 Square Feet



2nd Floor Tenant Area  
4,280 Square Feet



# Site Analysis





## Research



## Golden LEAF Foundation

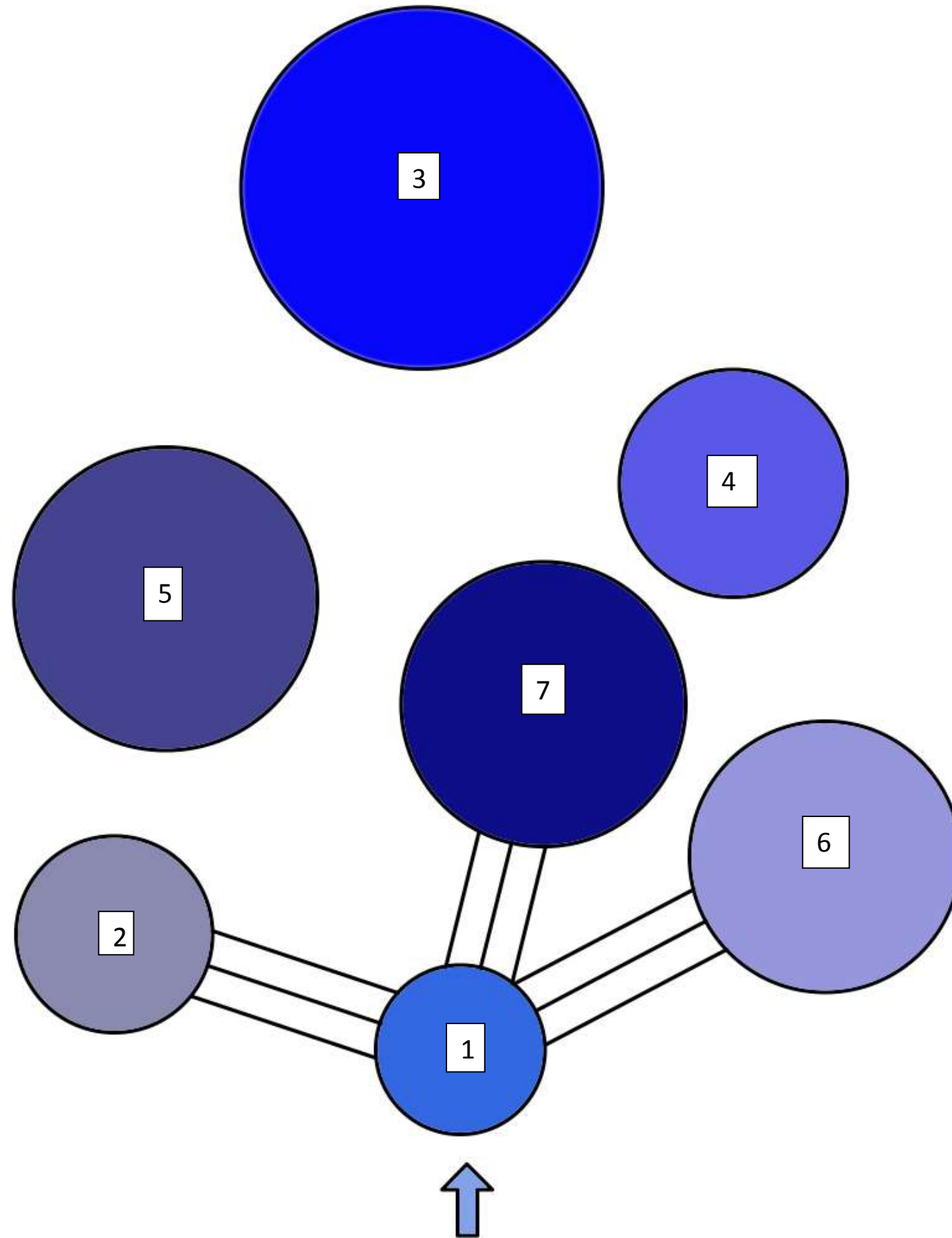
- The Golden LEAF Foundation is a nonprofit corporation located in Rocky Mount, NC
- Created in 1999
- Devoted to advancing the economic well-being of tobacco dependent cities
- It has scholarship programs for rising freshman and community college transfers to a University
- Also a scholarship program for Community college students
- Focus on agriculture, job creation and students education
- Source: [www.cfnc.org](http://www.cfnc.org) and [www.goldenleaf.org](http://www.goldenleaf.org)

**Golden LEAF**  
FOUNDATION

The logo for the Golden LEAF Foundation, featuring a stylized leaf or 'G' shape composed of concentric lines, with a registered trademark symbol (®) to its upper right.

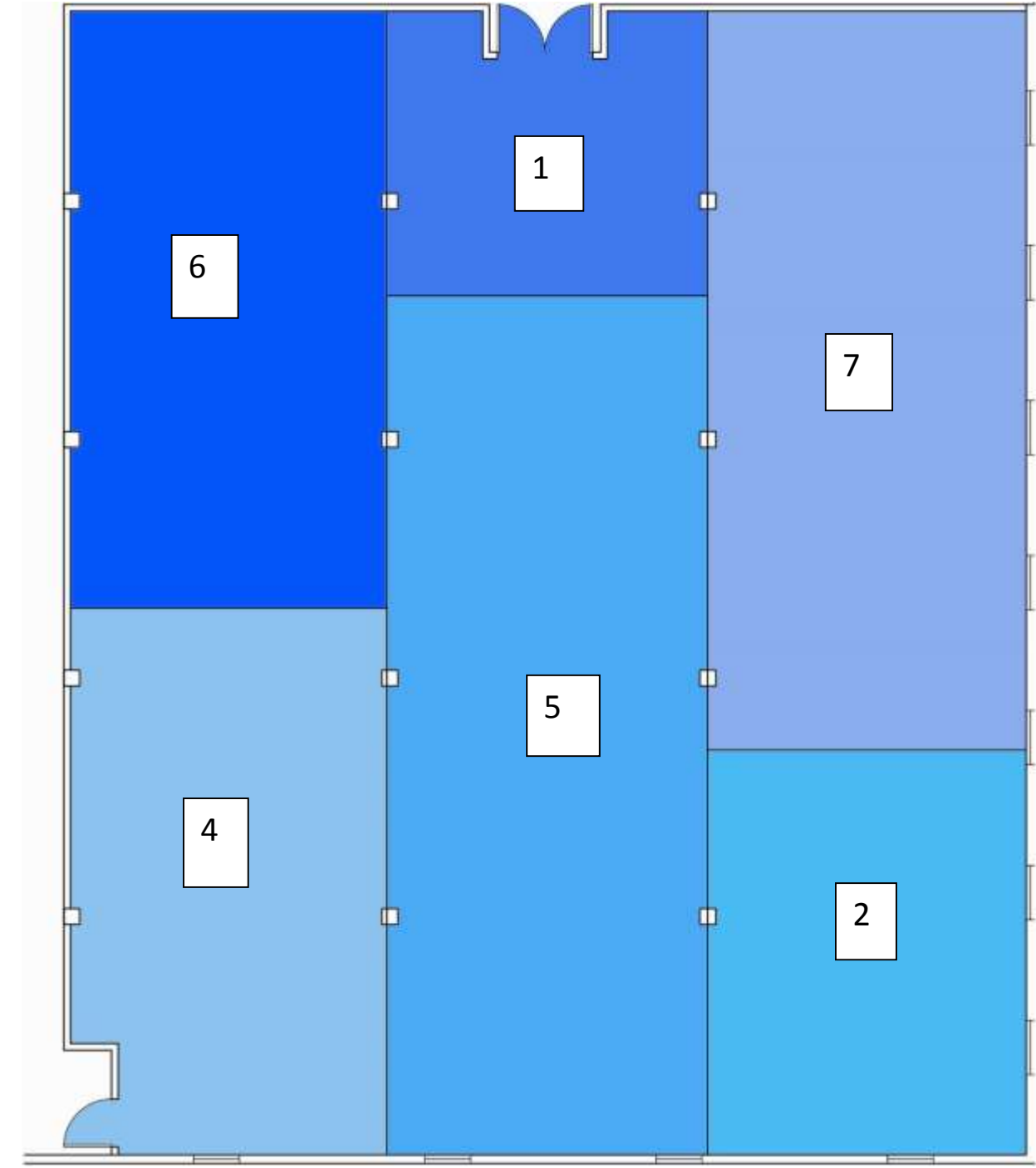
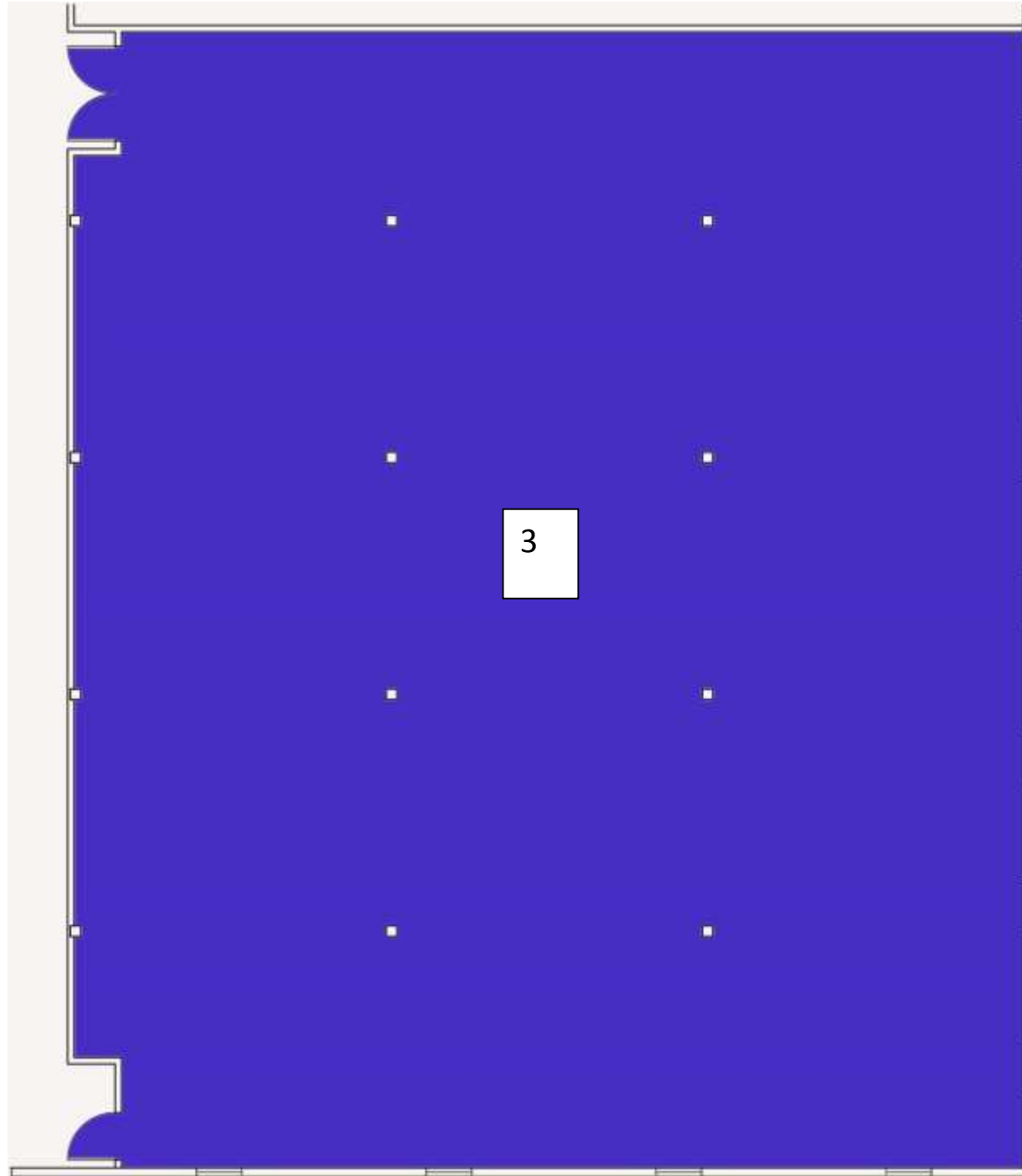
## Bubble Diagram

- 1- Reception Cluster
- 2- Director Cluster
- 3- Open Area Cluster
- 4- Storage Cluster
- 5- Work Cluster
- 6- Exhibition Cluster
- 7- Conference Cluster



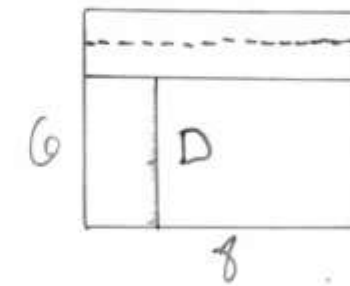
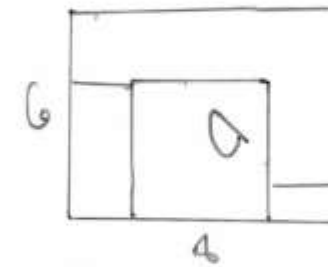
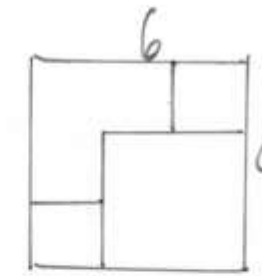
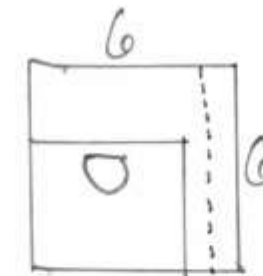
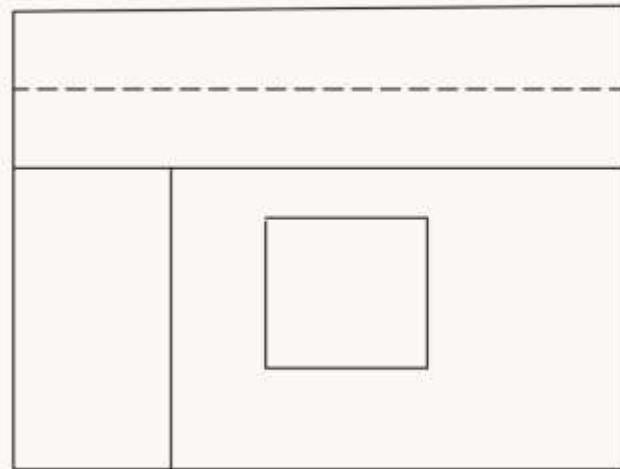
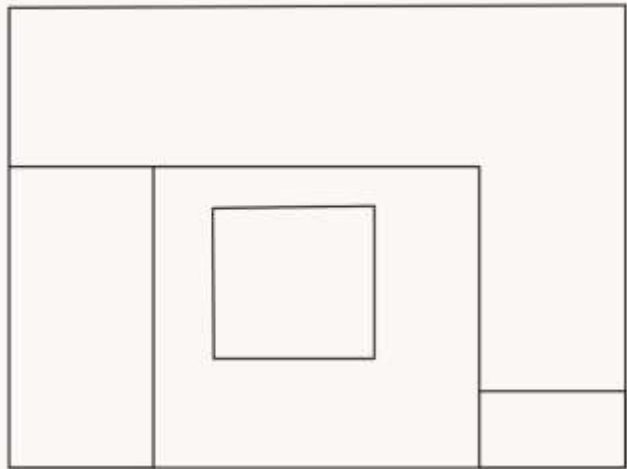
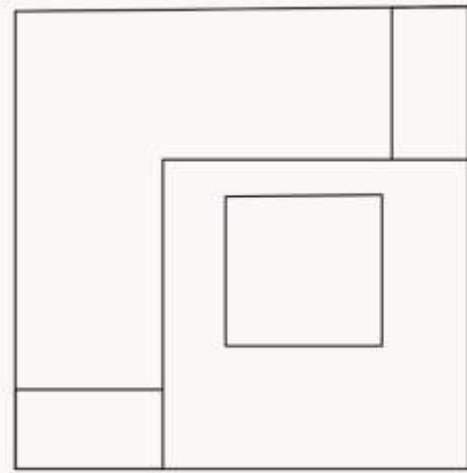
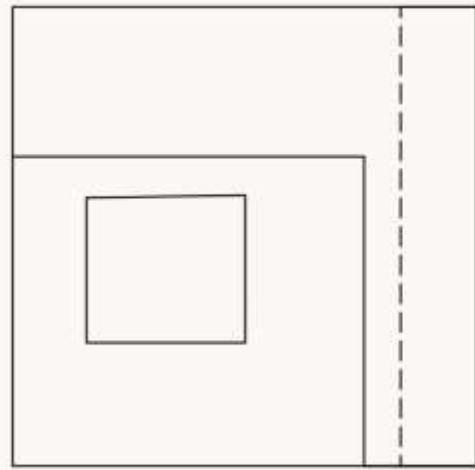
# Blocking Diagram

- 1- Reception Cluster
- 2- Director Cluster
- 3- Open Area Cluster
- 4- Storage Cluster
- 5- Work Cluster
- 6- Exhibition Cluster
- 7- Conference Cluster

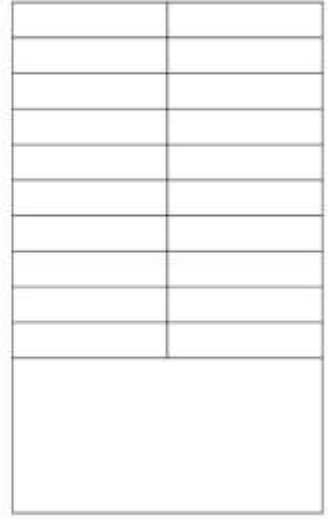
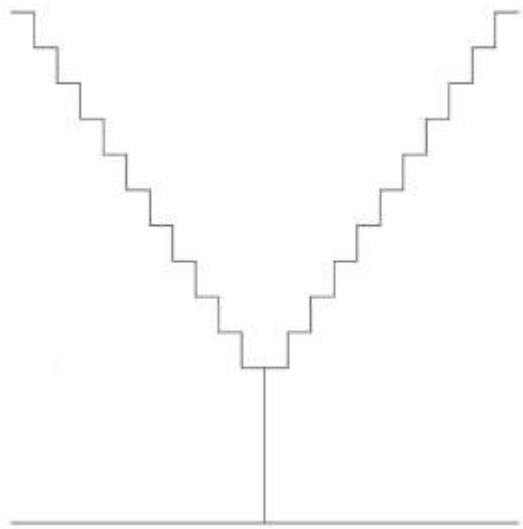
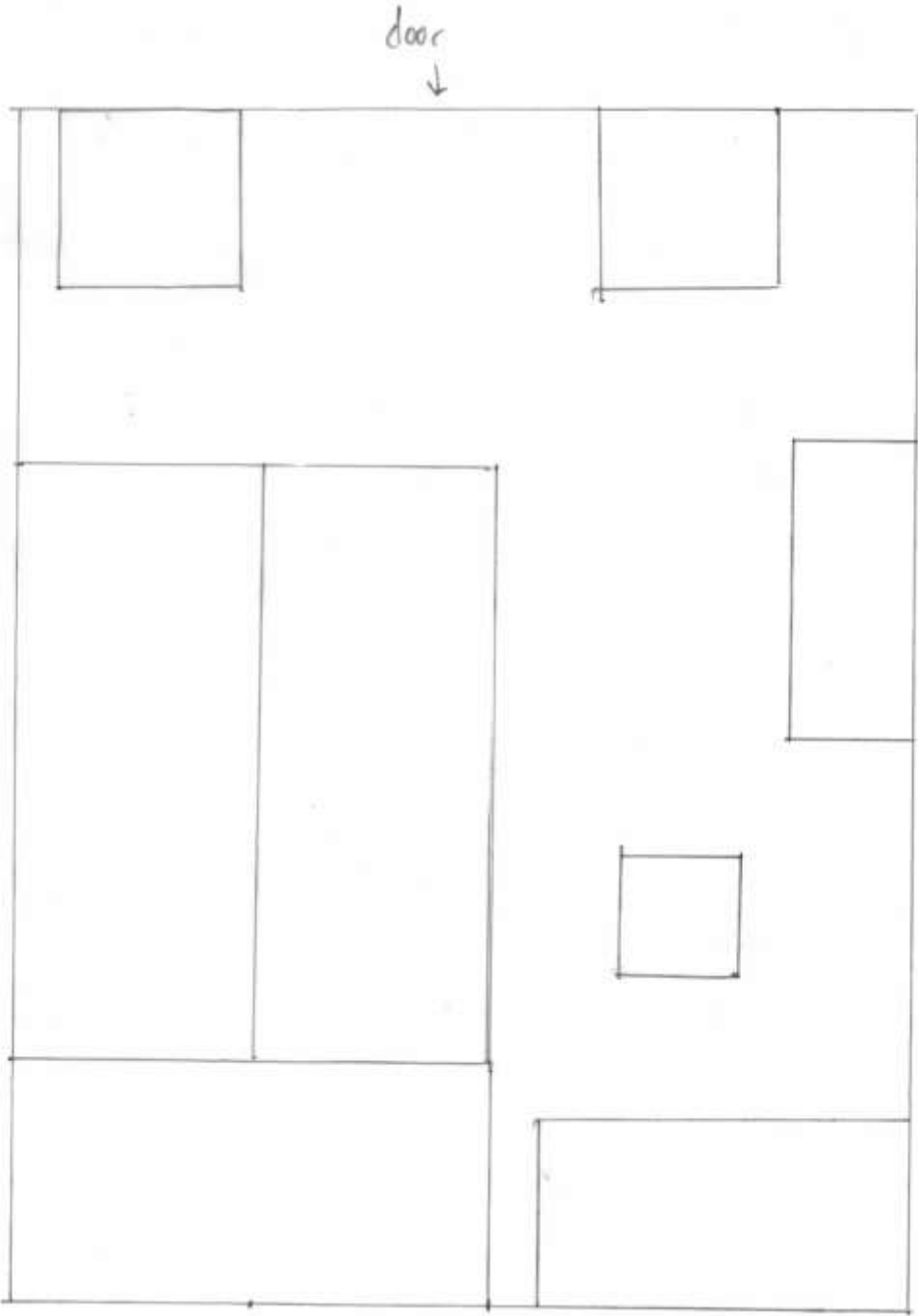




# Space Standard Drawings

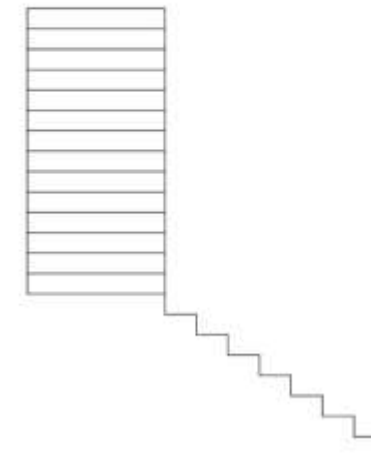
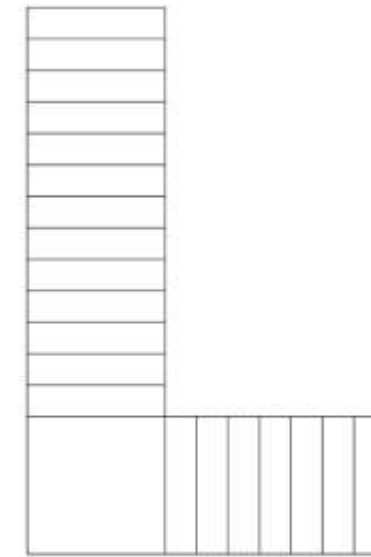
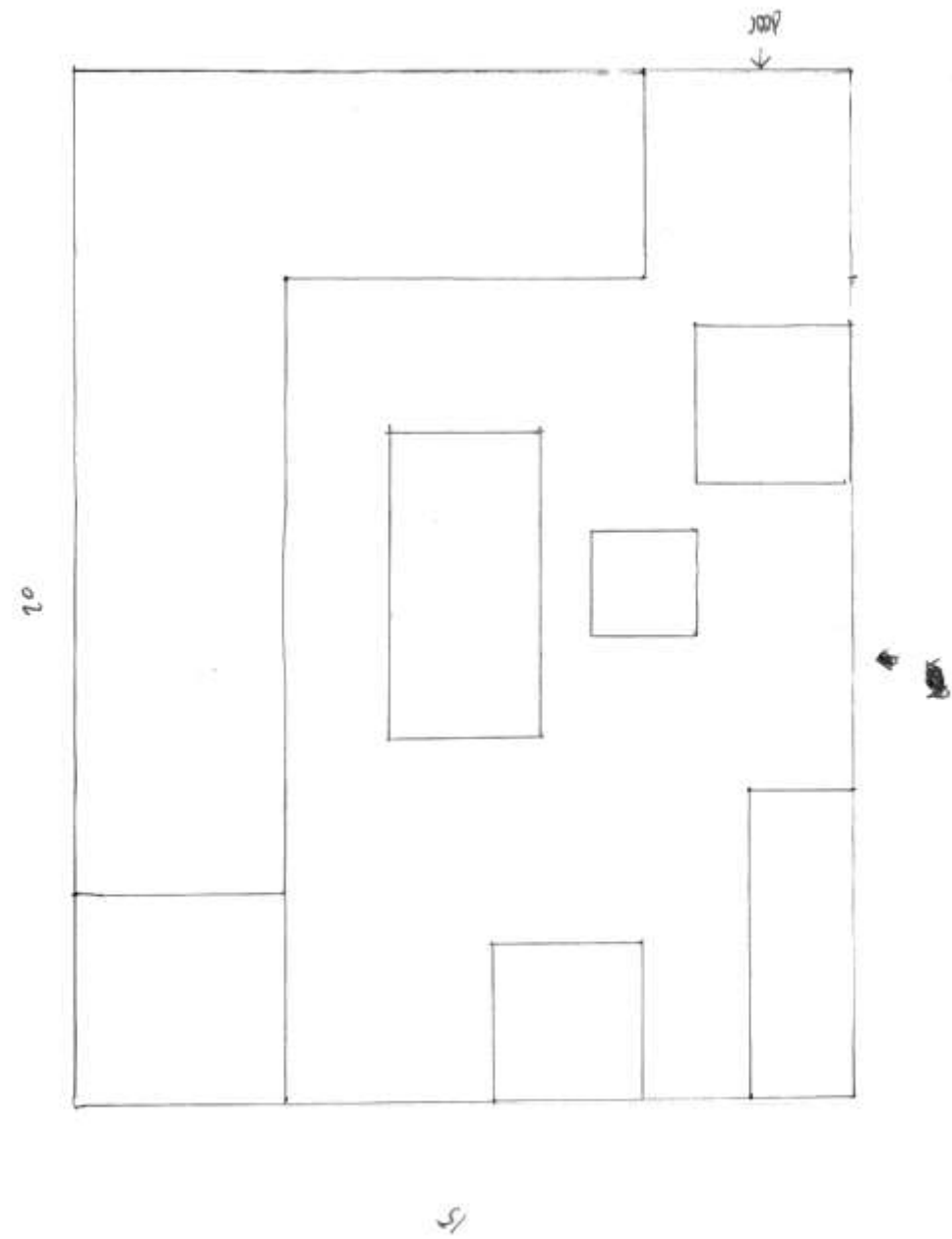


# Scissor Stair Sketch and Autocad

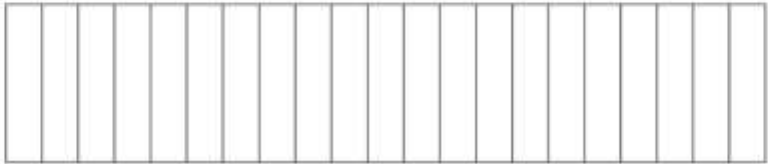
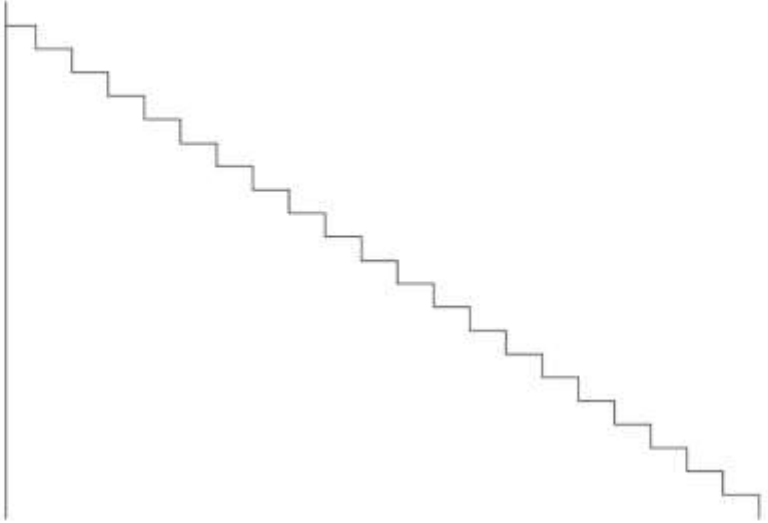
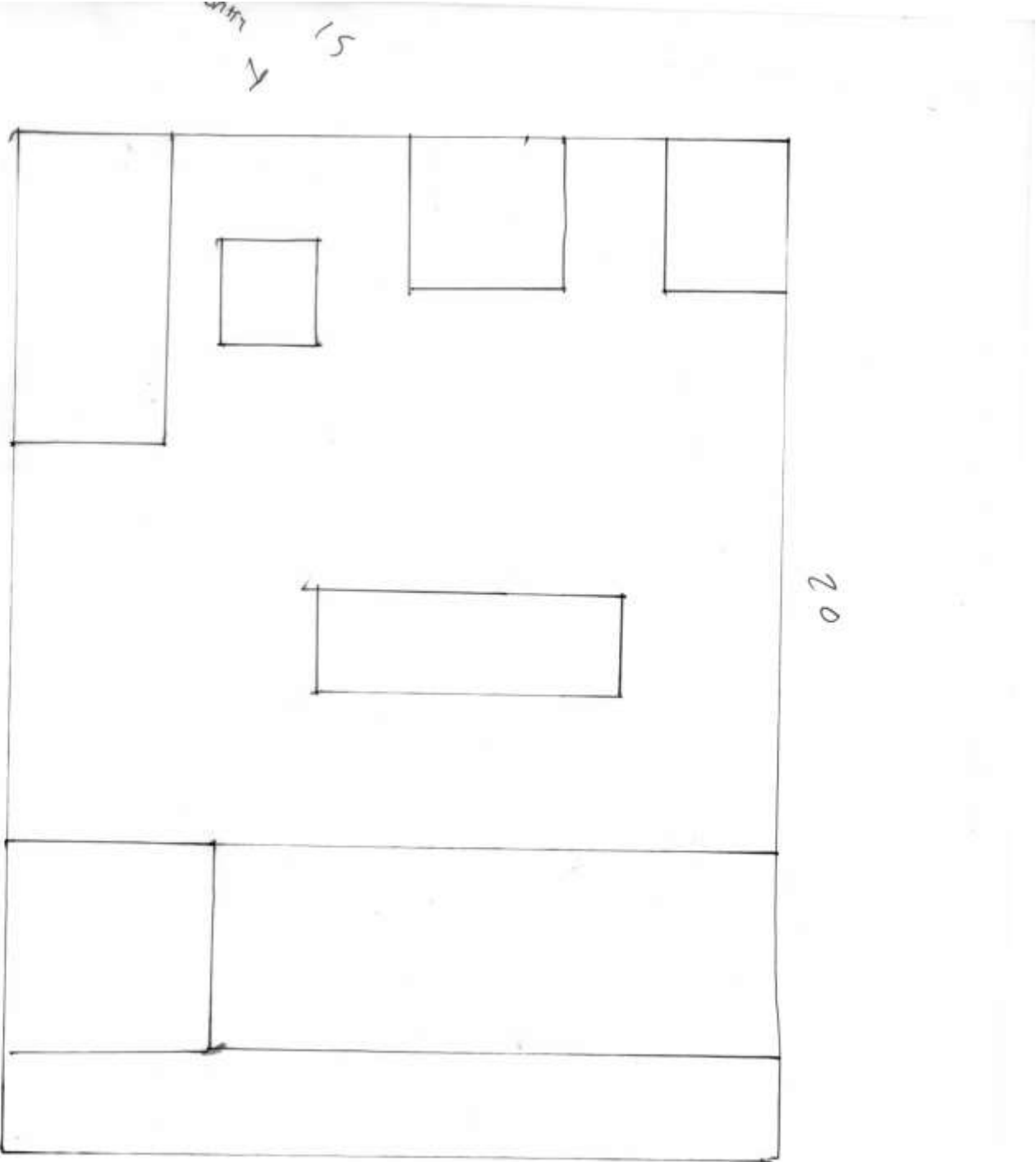




# L-Shaped Stair Sketch and Autocad

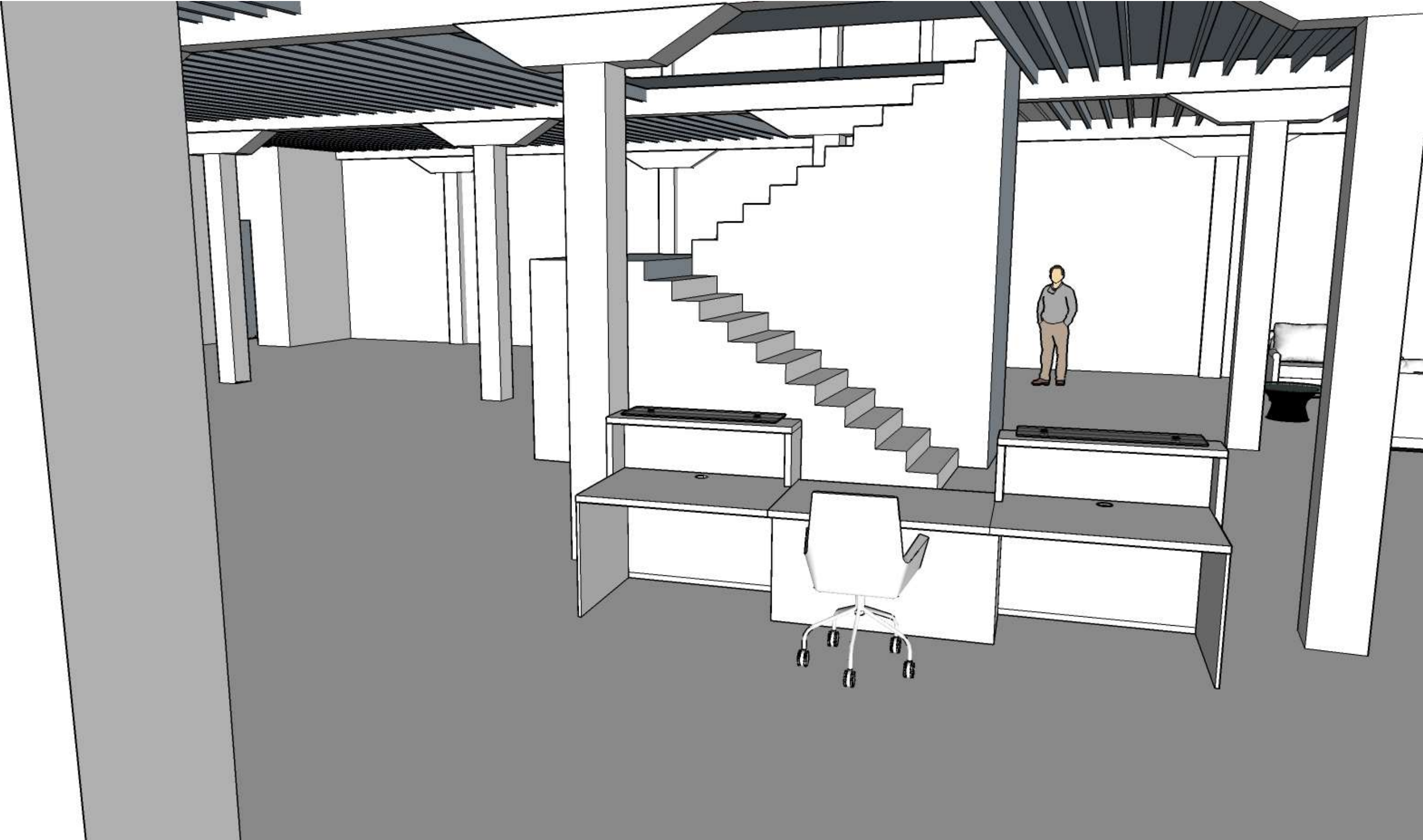


# Straight Stair Sketch and Autocad





**Scissor Stair Sketch-up**



**Scissor Stair Sketch-up**





## L-Shaped Sketch-up

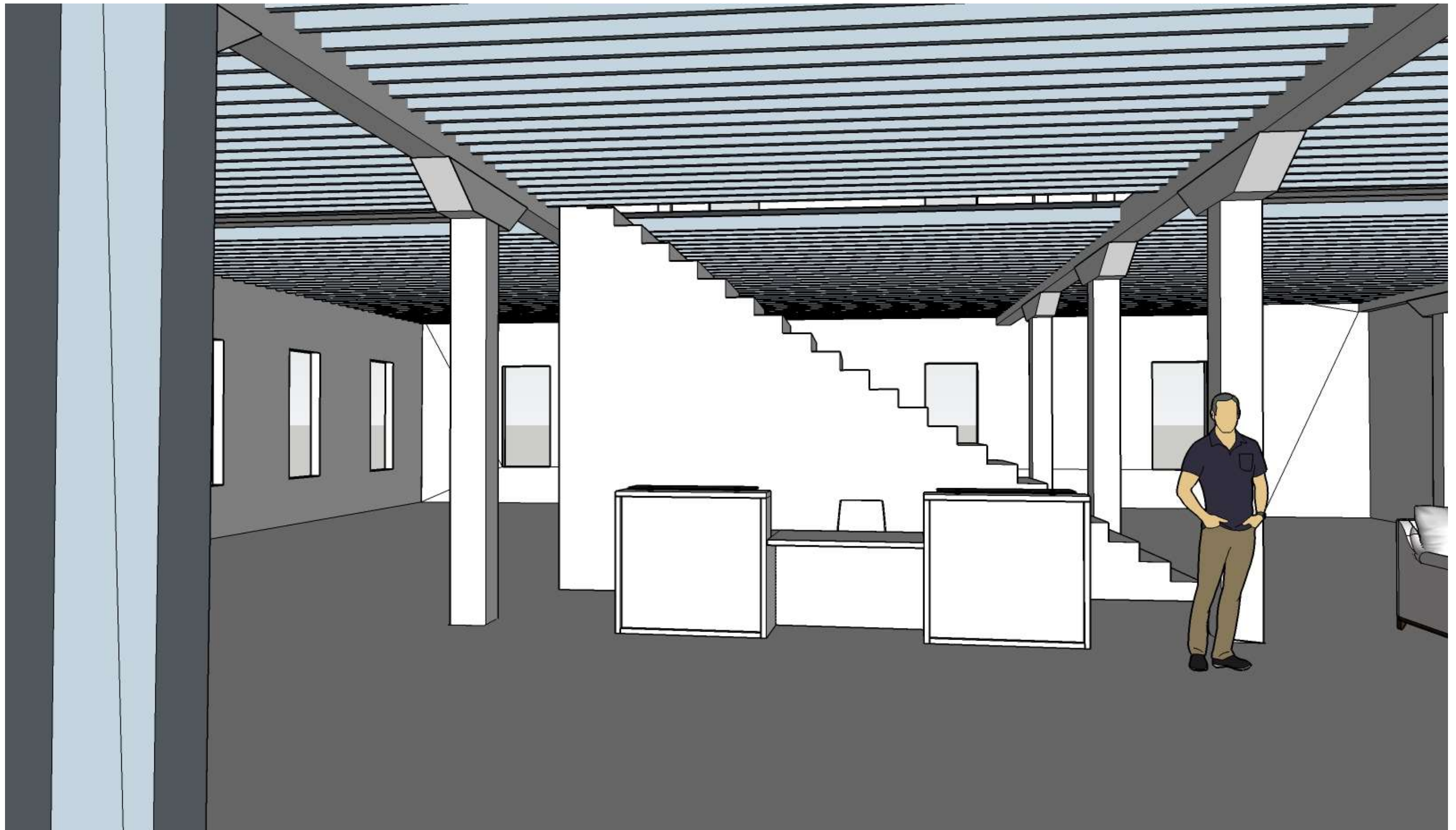


## L-Shaped Sketch-Up





## Straight Stair Sketch-Up





**Straight Stair Sketch-Up**

