

## Inspiration Images



## Mackenzie Alala

IDSN 2102  
Interior Design Fundamentals  
Professor Charles Gustina

Department of  
Interior Design & Merchandising  
College of Human Ecology  
East Carolina University

## Concept Statement/ Inspiration Images

### Concept Statement:

- To create a workspace that offers a unique design by blending the Coastal South and industrial/rustic themes and inspirations for employees and clients to work and learn peacefully.
- Utilize clean lines and a mix of materials to tie the two inspirations together.
- To provide an inviting space that incorporates the use of greys and a pop of blue.
- Sea creatures are the focus from the Coastal South inspiration.
- Wood, glass, and metals are brought in through the rustic and industrial feel.
- Creating a space along the coast with a modern industrial touch.

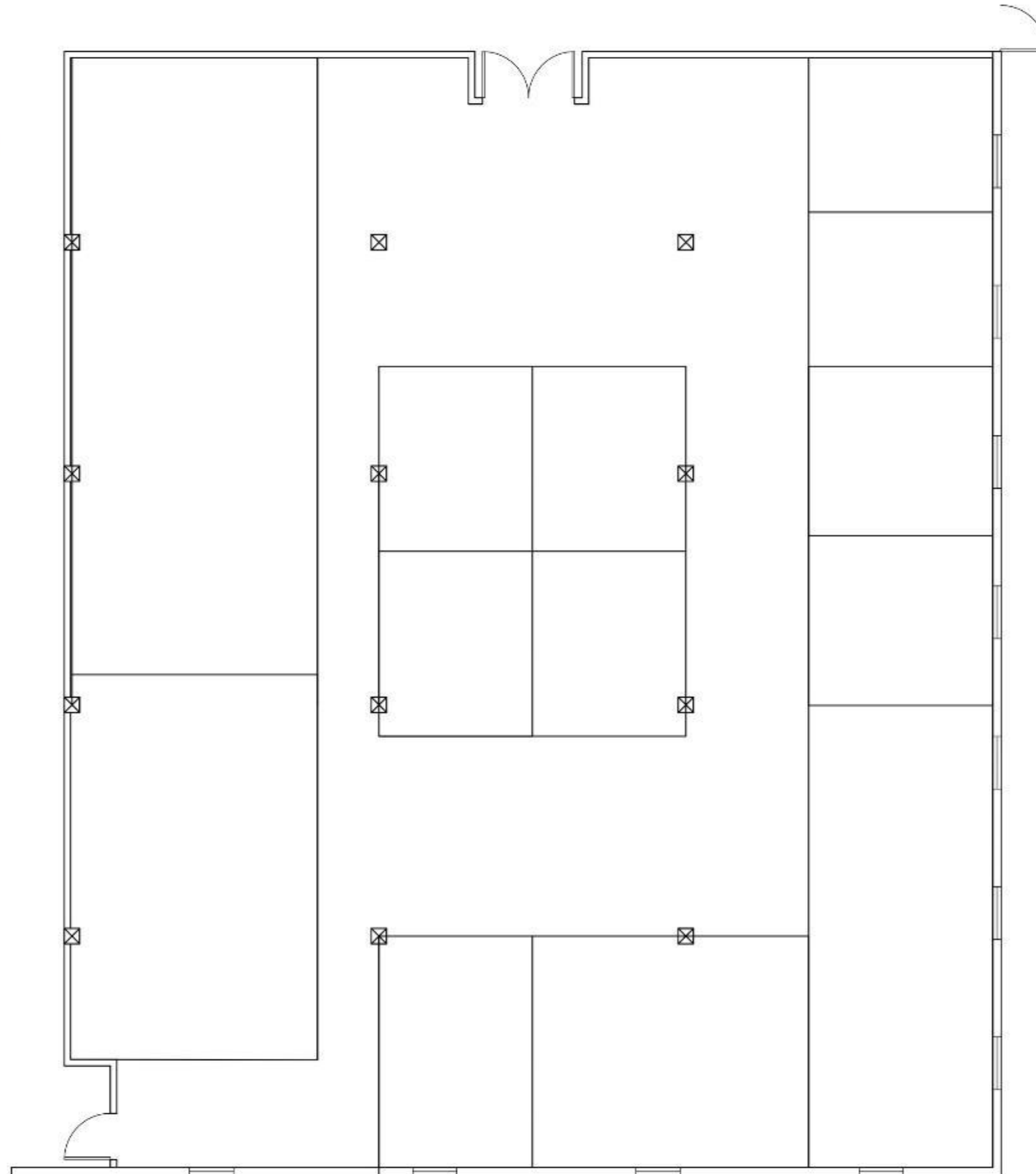


## Mackenzie Alala

IDSN 2102  
Interior Design Fundamentals  
Professor Charles Gustina

Department of  
Interior Design & Merchandising  
College of Human Ecology  
East Carolina University

**Space Plan Sketch  
Bottom Floor-1**

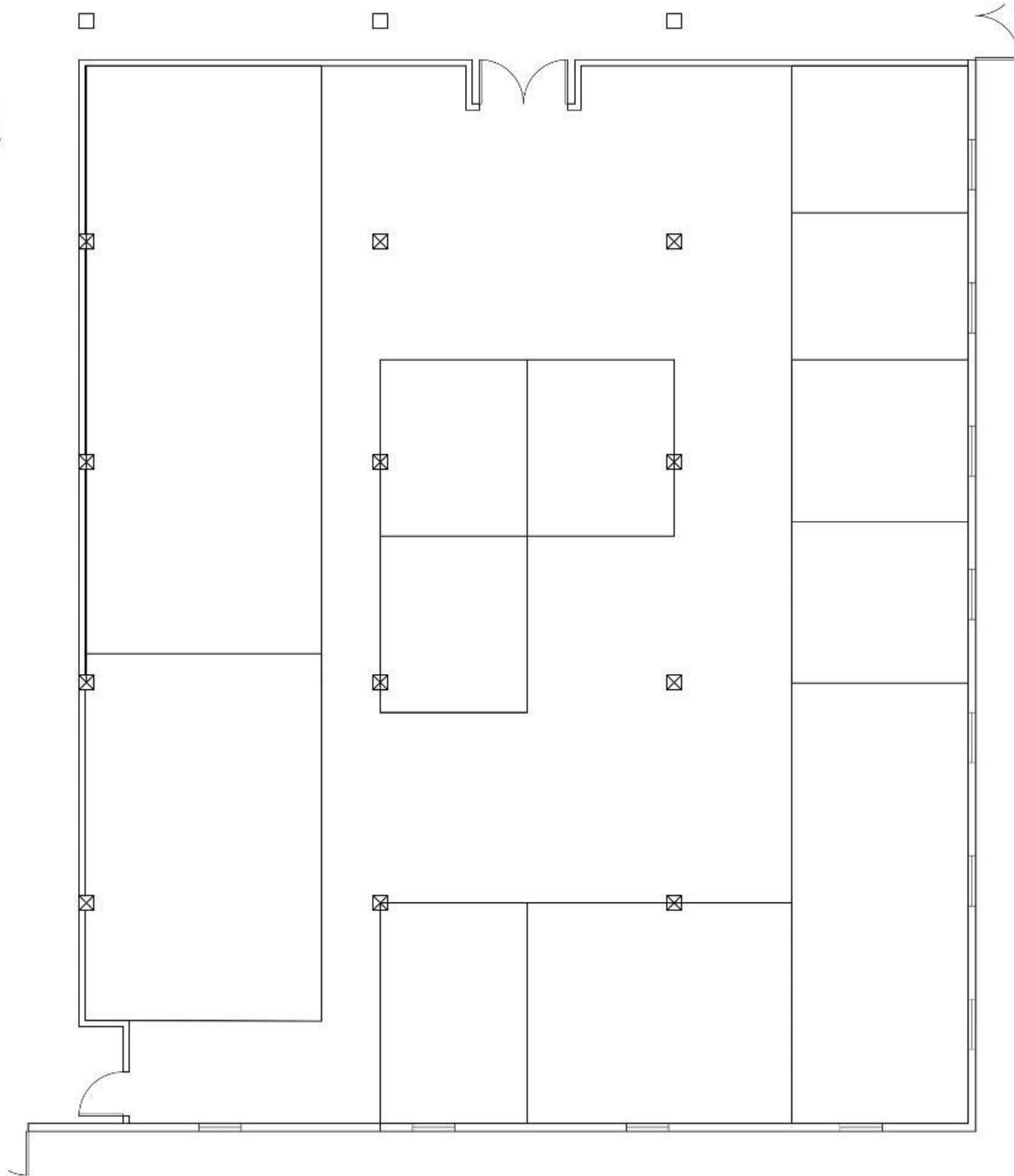


**Mackenzie Alala**

**IDSN 2102  
Interior Design Fundamentals  
Professor Charles Gustina**

**Department of  
Interior Design & Merchandising  
College of Human Ecology  
East Carolina University**

**Space Plan Sketch  
Bottom Floor-2**

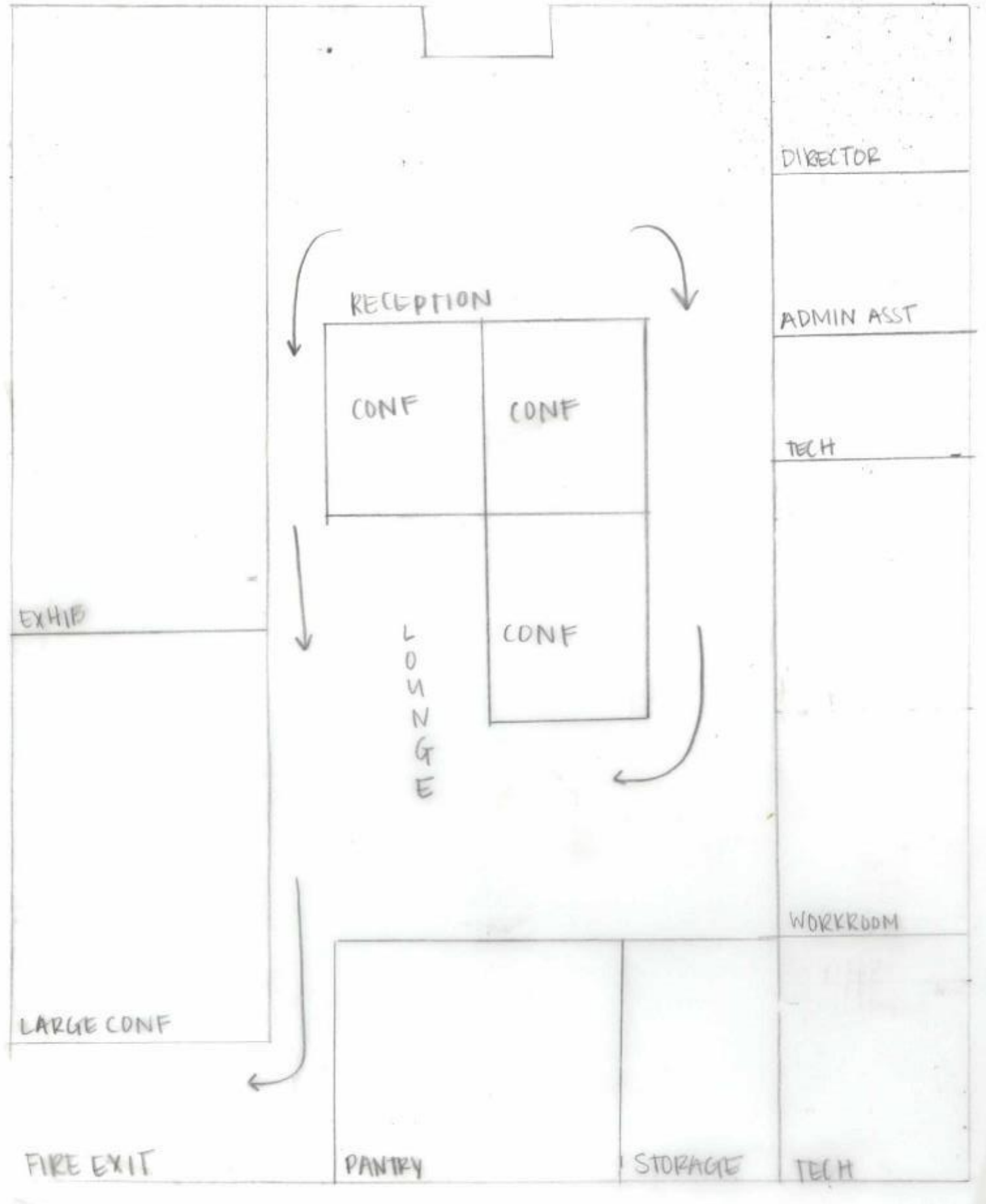


**Mackenzie Alala**

**IDSN 2102  
Interior Design Fundamentals  
Professor Charles Gustina**

**Department of  
Interior Design & Merchandising  
College of Human Ecology  
East Carolina University**

**Space Plan Sketch  
Bottom Floor-3**

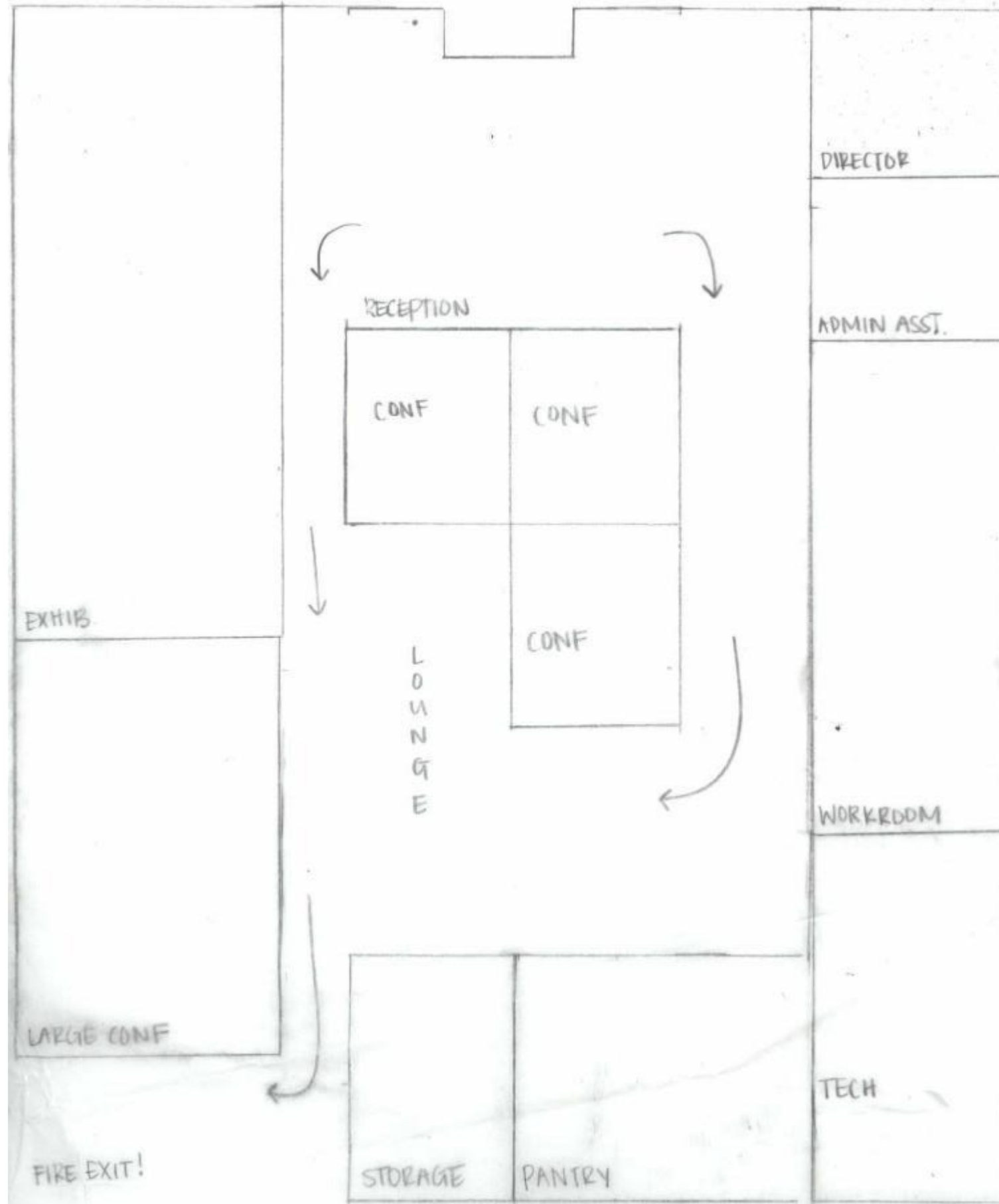


**Mackenzie Alala**

**IDSN 2102  
Interior Design Fundamentals  
Professor Charles Gustina**

**Department of  
Interior Design & Merchandising  
College of Human Ecology  
East Carolina University**

**Space Plan Sketch  
Bottom Floor-4**

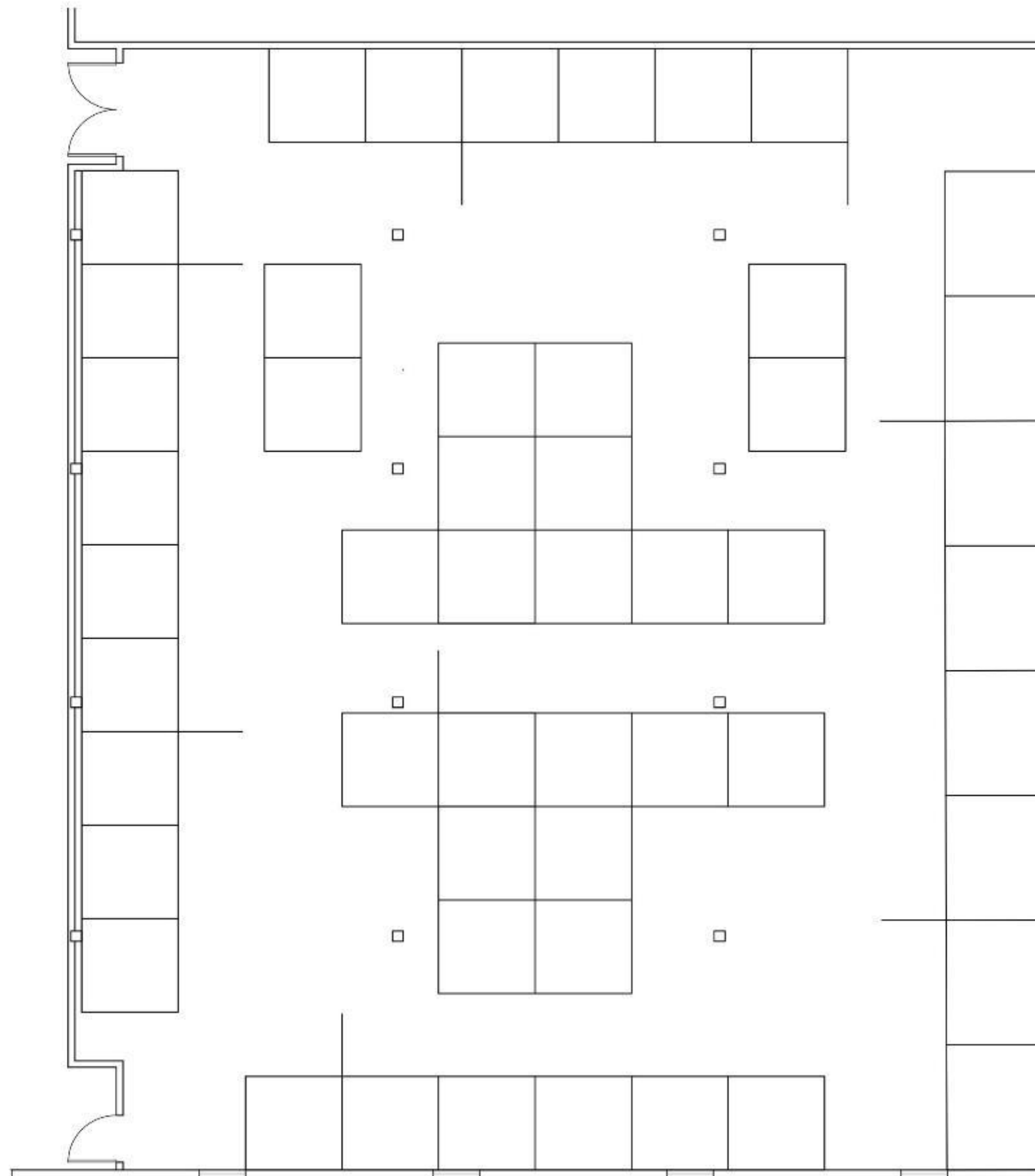


**Mackenzie Alala**

IDSN 2102  
Interior Design Fundamentals  
Professor Charles Gustina

Department of  
Interior Design & Merchandising  
College of Human Ecology  
East Carolina University

**Space Plan Sketch  
Top Floor-1**

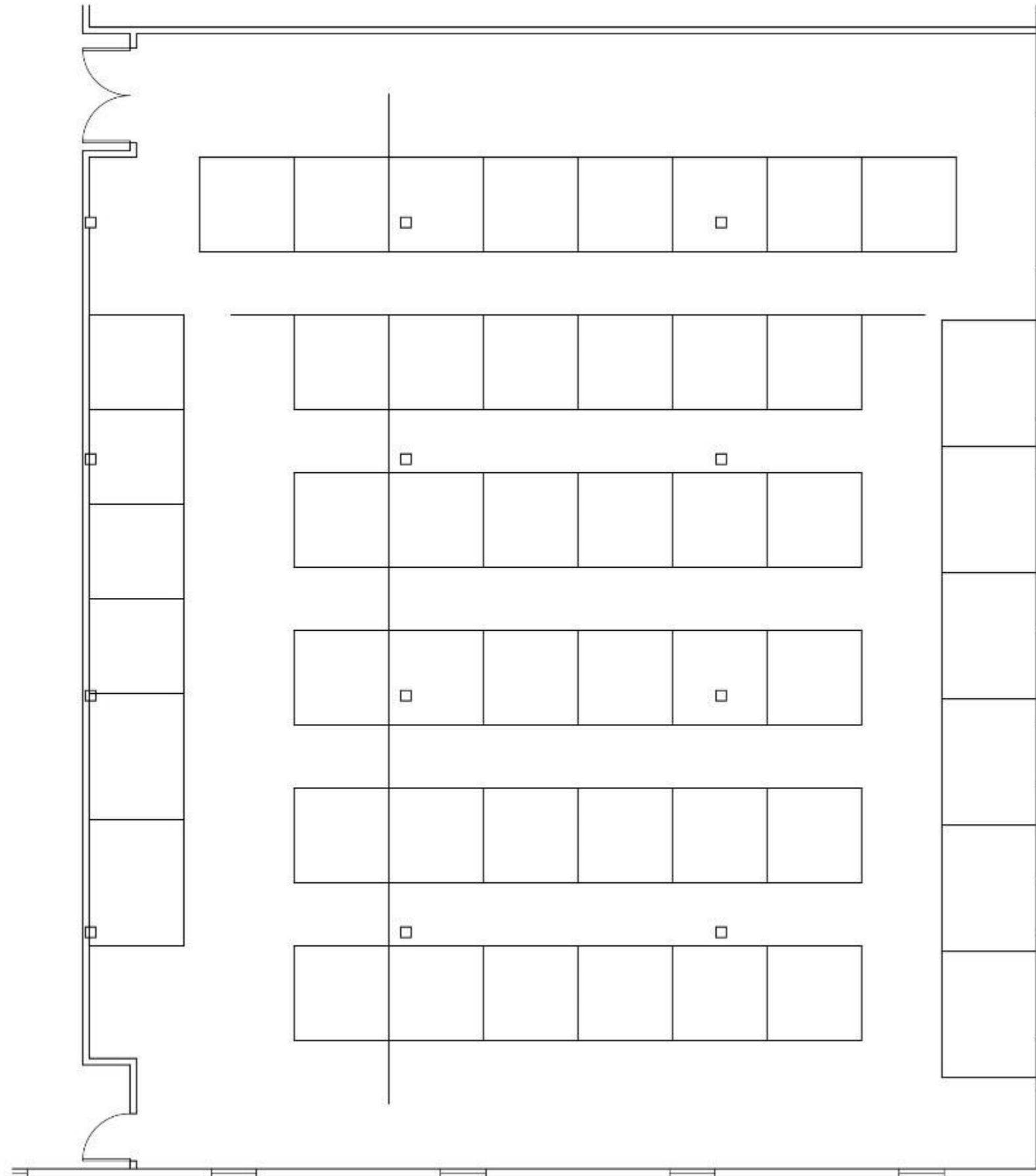


**Mackenzie Alala**

**IDSN 2102  
Interior Design Fundamentals  
Professor Charles Gustina**

**Department of  
Interior Design & Merchandising  
College of Human Ecology  
East Carolina University**

**Space Plan Sketch  
Top Floor-2**



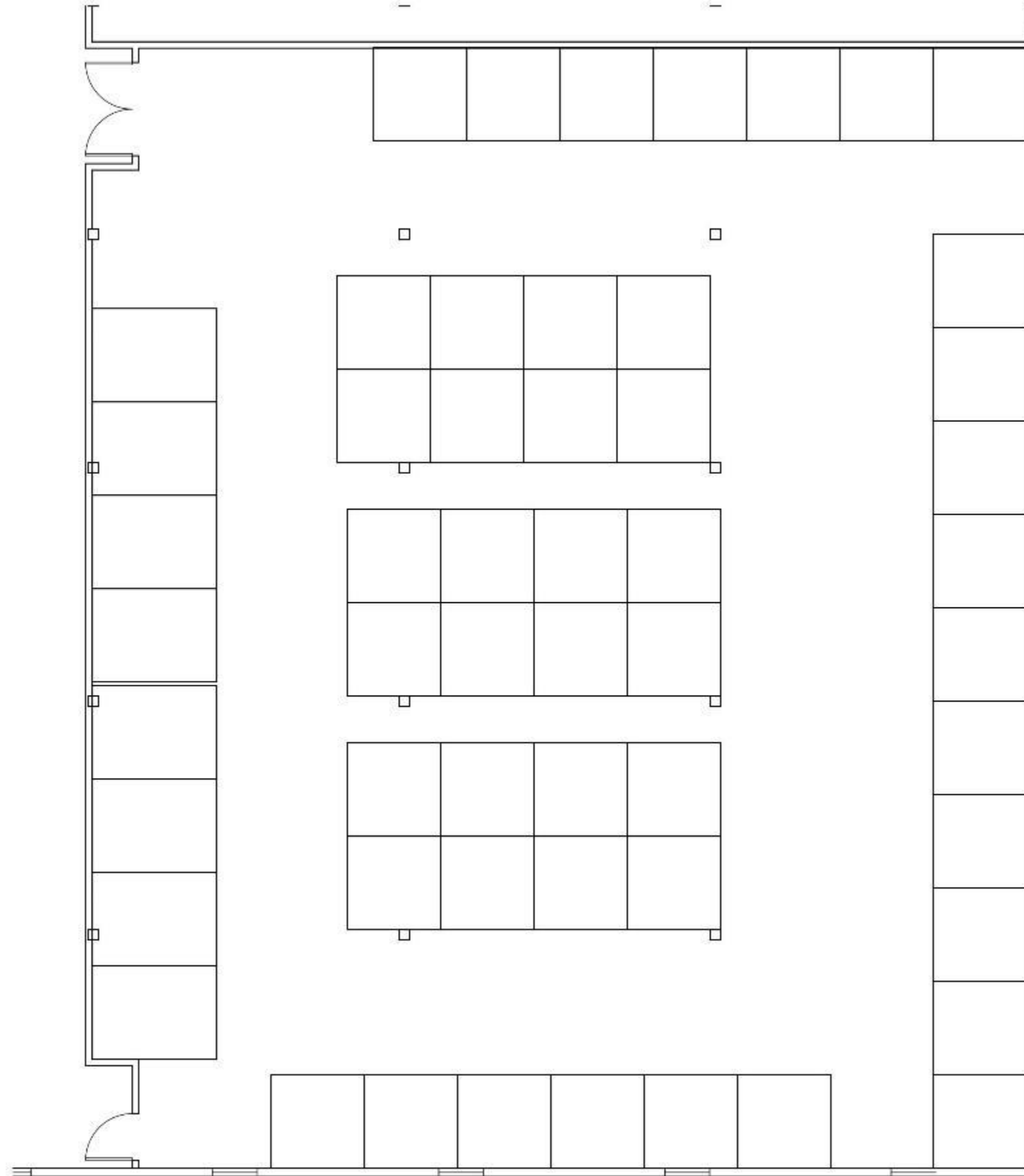
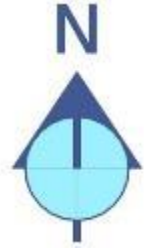
**Mackenzie Alala**

**IDSN 2102  
Interior Design Fundamentals  
Professor Charles Gustina**

**Department of  
Interior Design & Merchandising  
College of Human Ecology  
East Carolina University**



**Space Plan Sketch  
Top Floor-3**

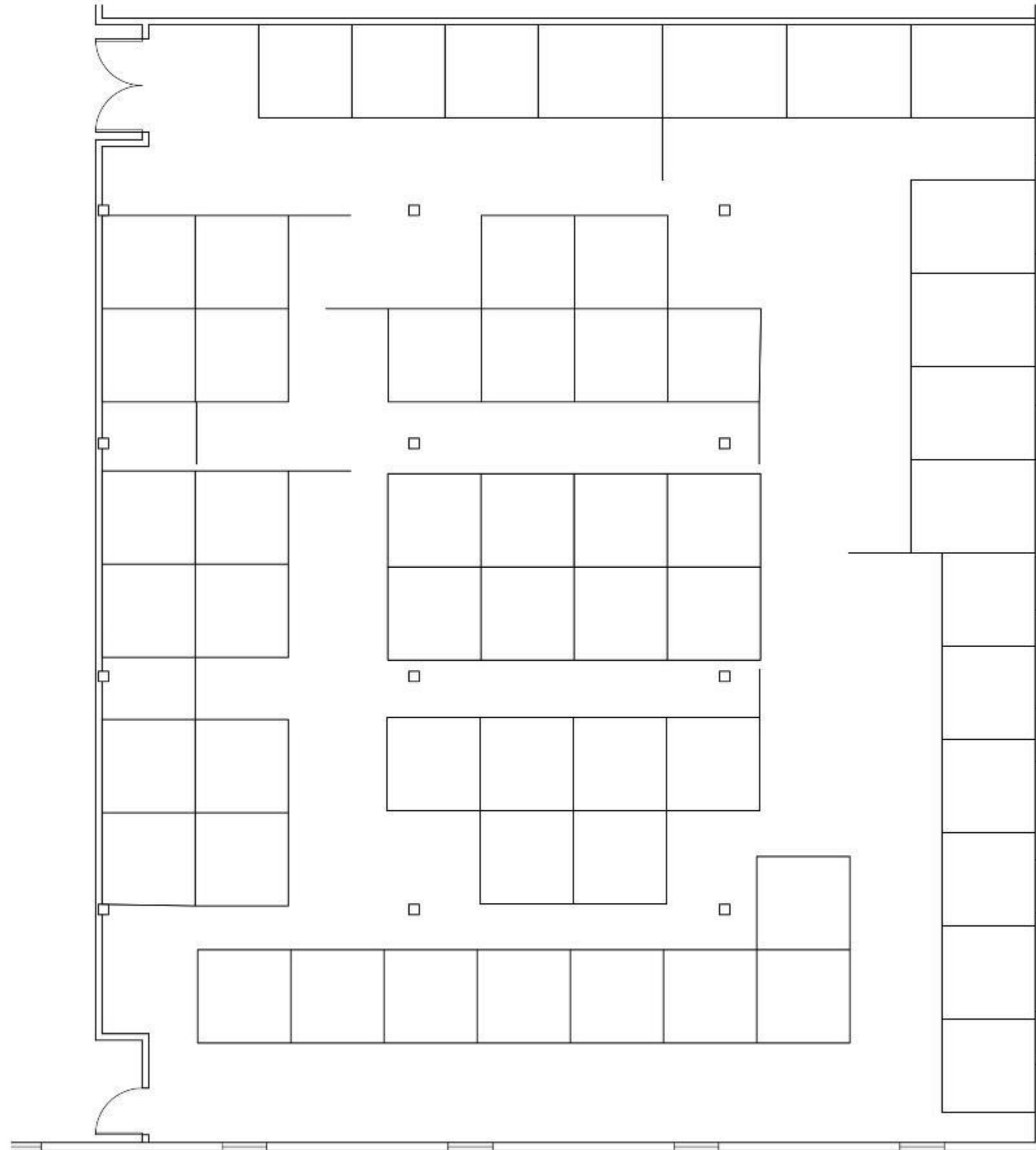


**Mackenzie Alala**

**IDSN 2102  
Interior Design Fundamentals  
Professor Charles Gustina**

**Department of  
Interior Design & Merchandising  
College of Human Ecology  
East Carolina University**

**Space Plan Sketch  
Top Floor-4**



**Mackenzie Alala**

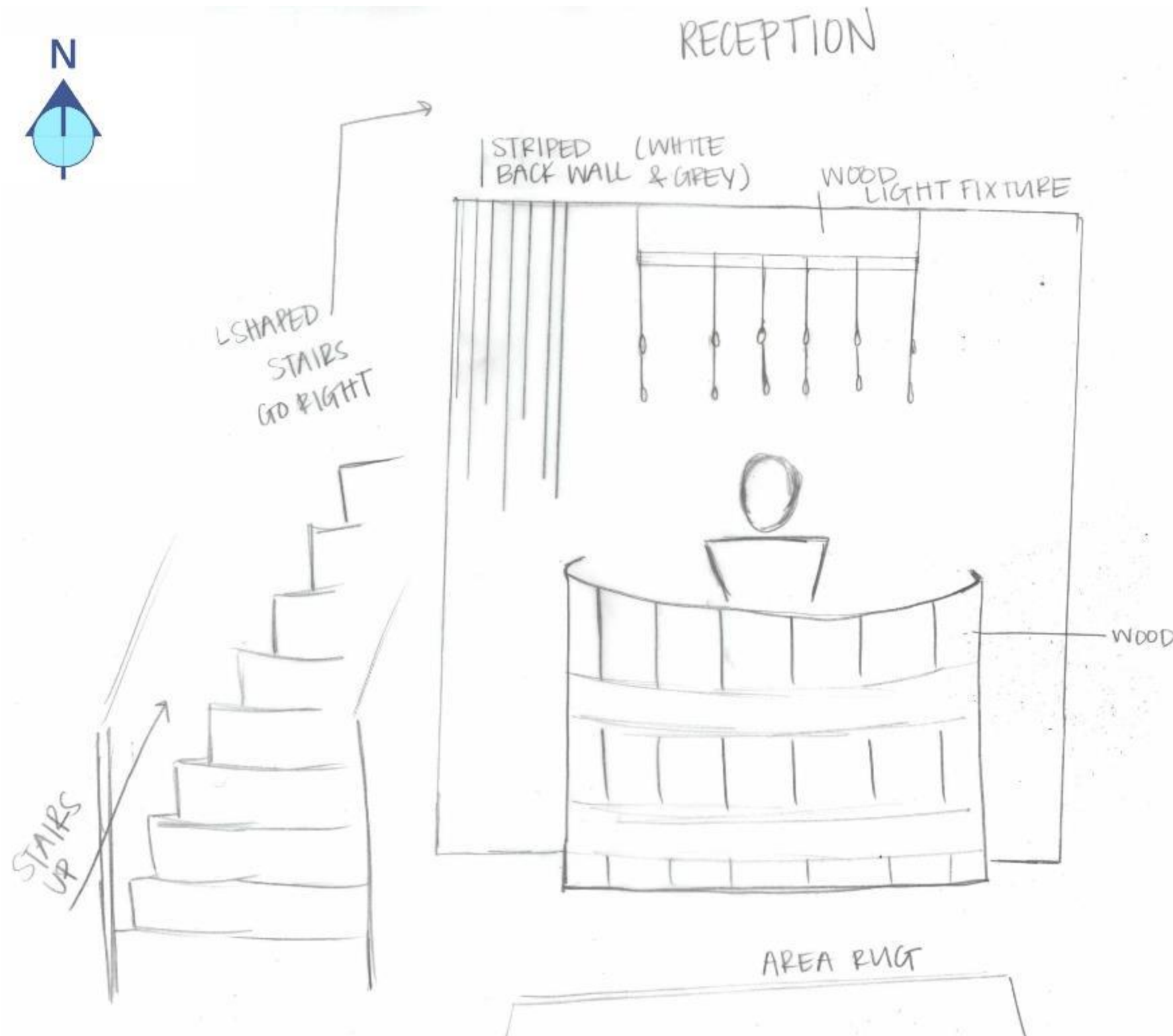
**IDSN 2102  
Interior Design Fundamentals  
Professor Charles Gustina**

**Department of  
Interior Design & Merchandising  
College of Human Ecology  
East Carolina University**

# SketchUp Overlay- Reception Perspective

Mackenzie Alala

IDSN 2102  
Interior Design Fundamentals  
Professor Charles Gustina

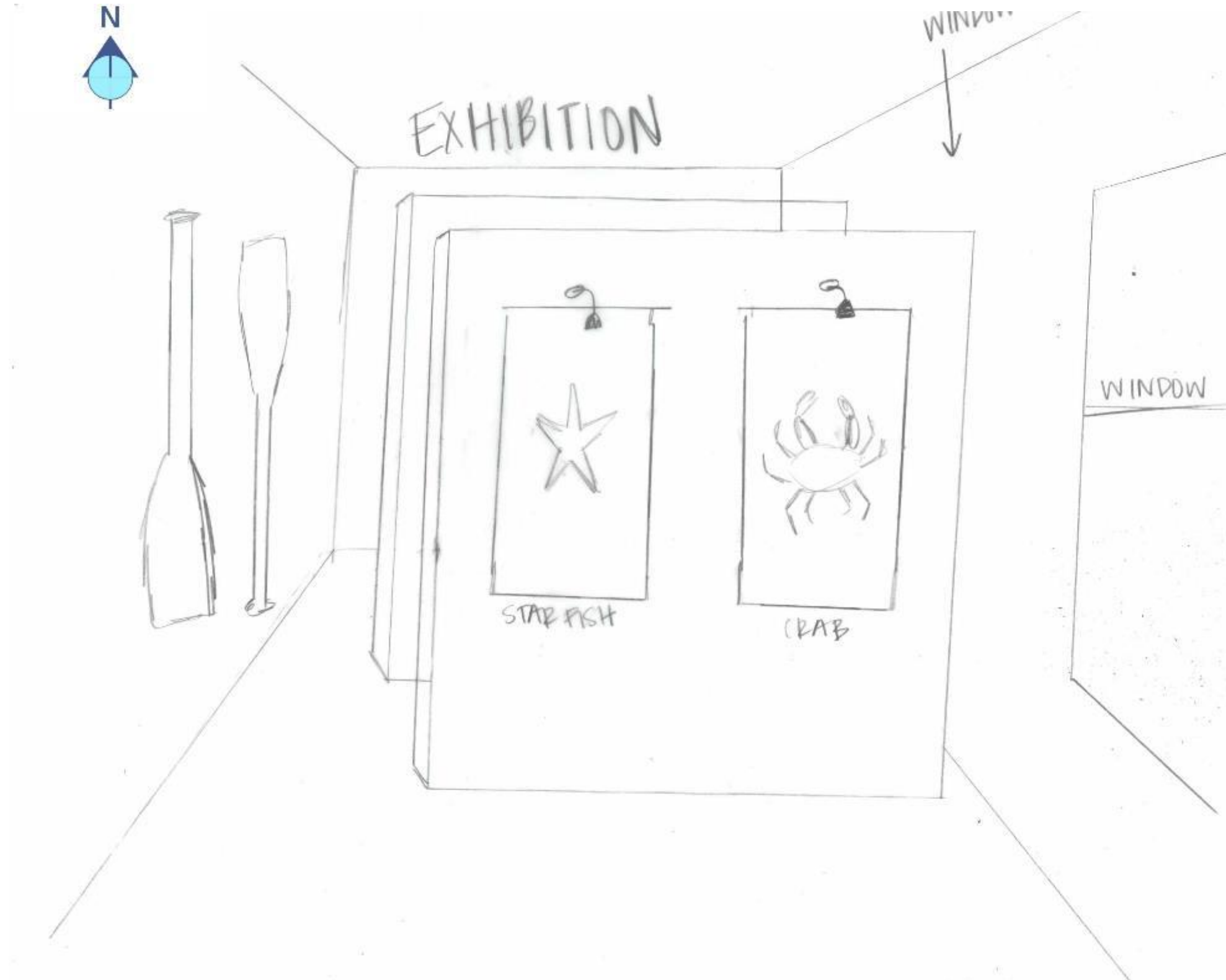


Department of  
Interior Design & Merchandising  
College of Human Ecology  
East Carolina University

**SketchUp Overlay- Exhibition Perspective**

**Mackenzie Alala**

**IDSN 2102  
Interior Design Fundamentals  
Professor Charles Gustina**



**Department of  
Interior Design & Merchandising  
College of Human Ecology  
East Carolina University**

# SketchUp Overlay- Pantry Perspective

Mackenzie Alala

IDSN 2102  
Interior Design Fundamentals  
Professor Charles Gustina

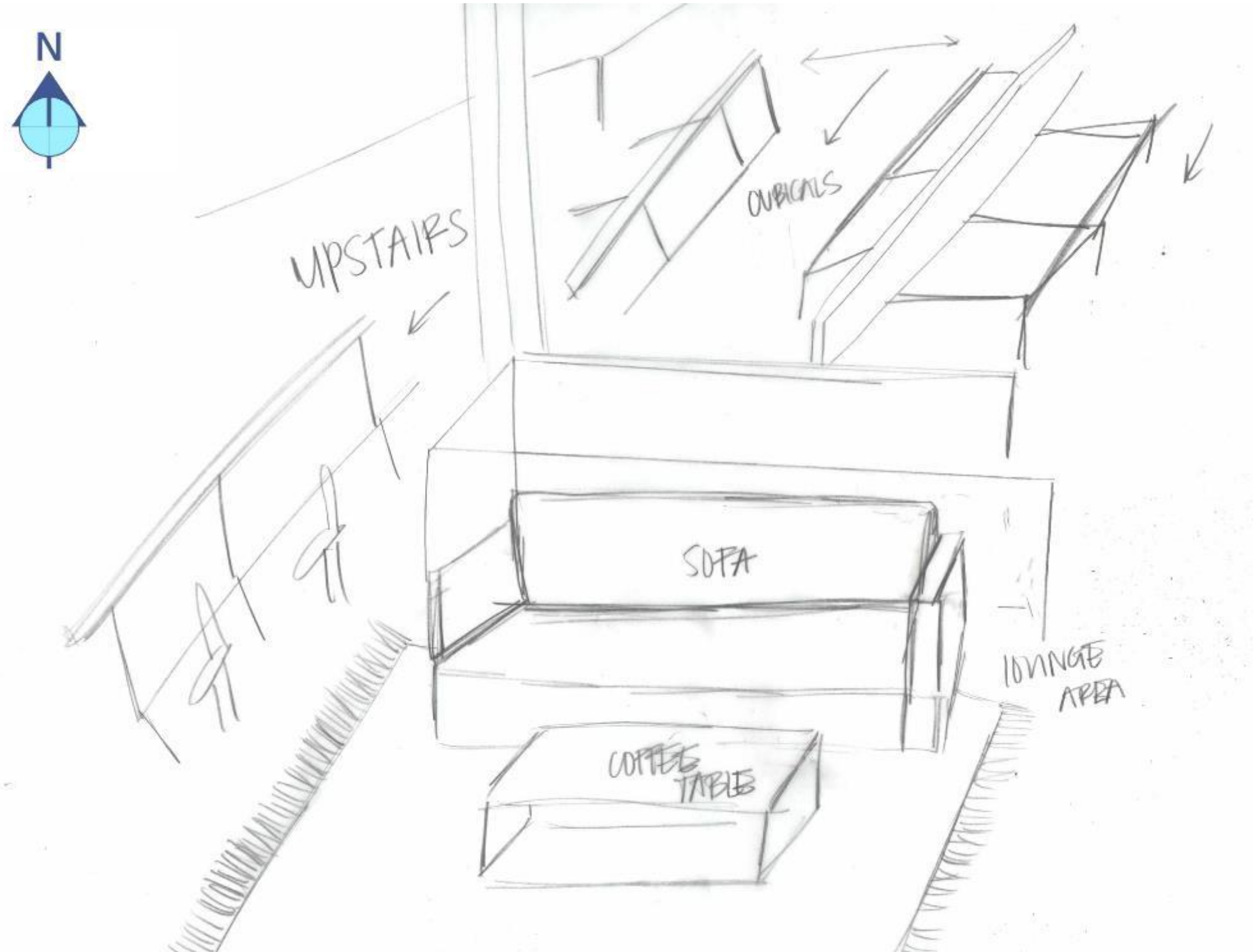


Department of  
Interior Design & Merchandising  
College of Human Ecology  
East Carolina University

**SketchUp Overlay- Top Floor  
Workstations Perspective**

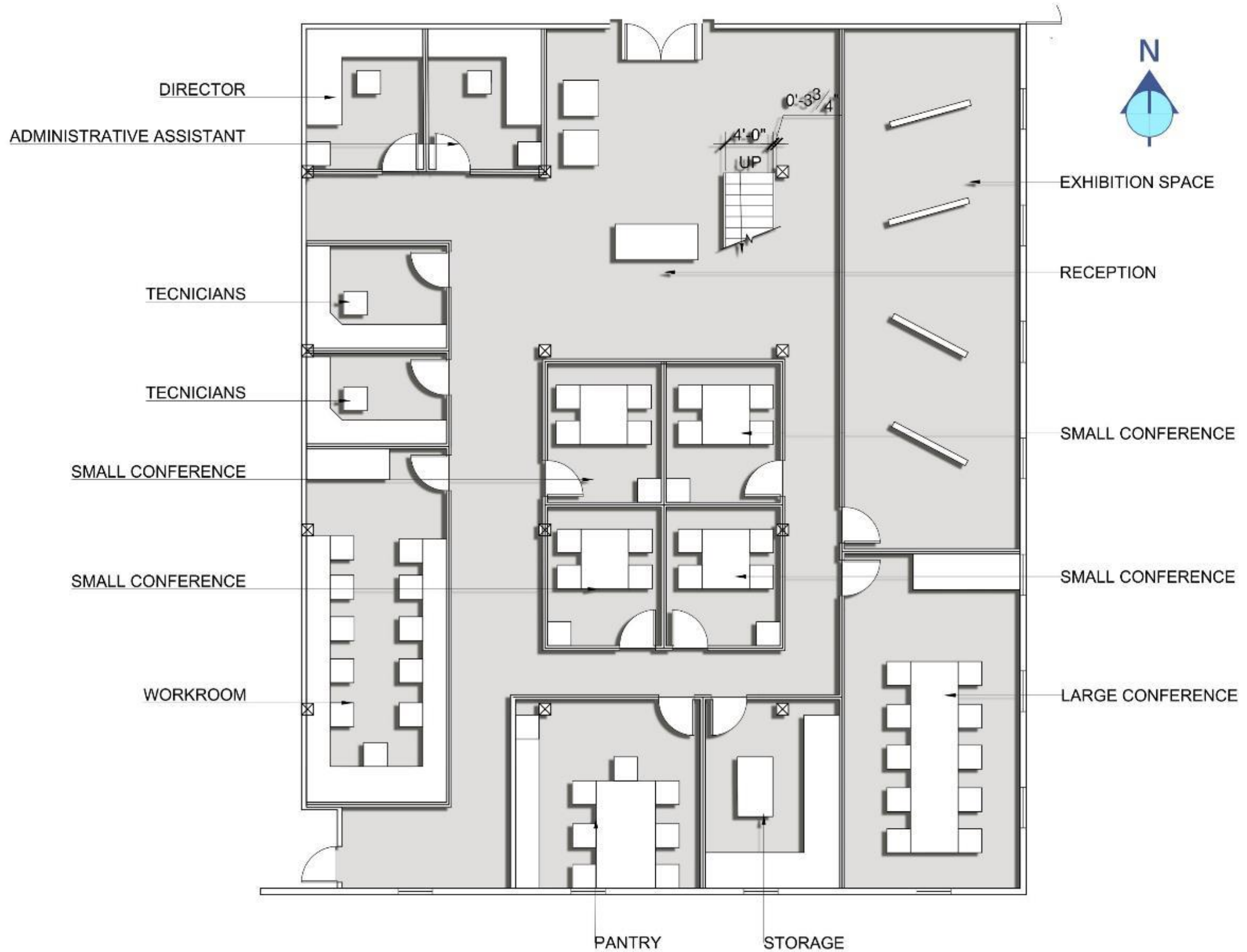
**Mackenzie Alala**

**IDSN 2102  
Interior Design Fundamentals  
Professor Charles Gustina**



**Department of  
Interior Design & Merchandising  
College of Human Ecology  
East Carolina University**

# AutoCad Furniture Plan



# Mackenzie Alala

IDSN 2102  
Interior Design Fundamentals  
Professor Charles Gustina

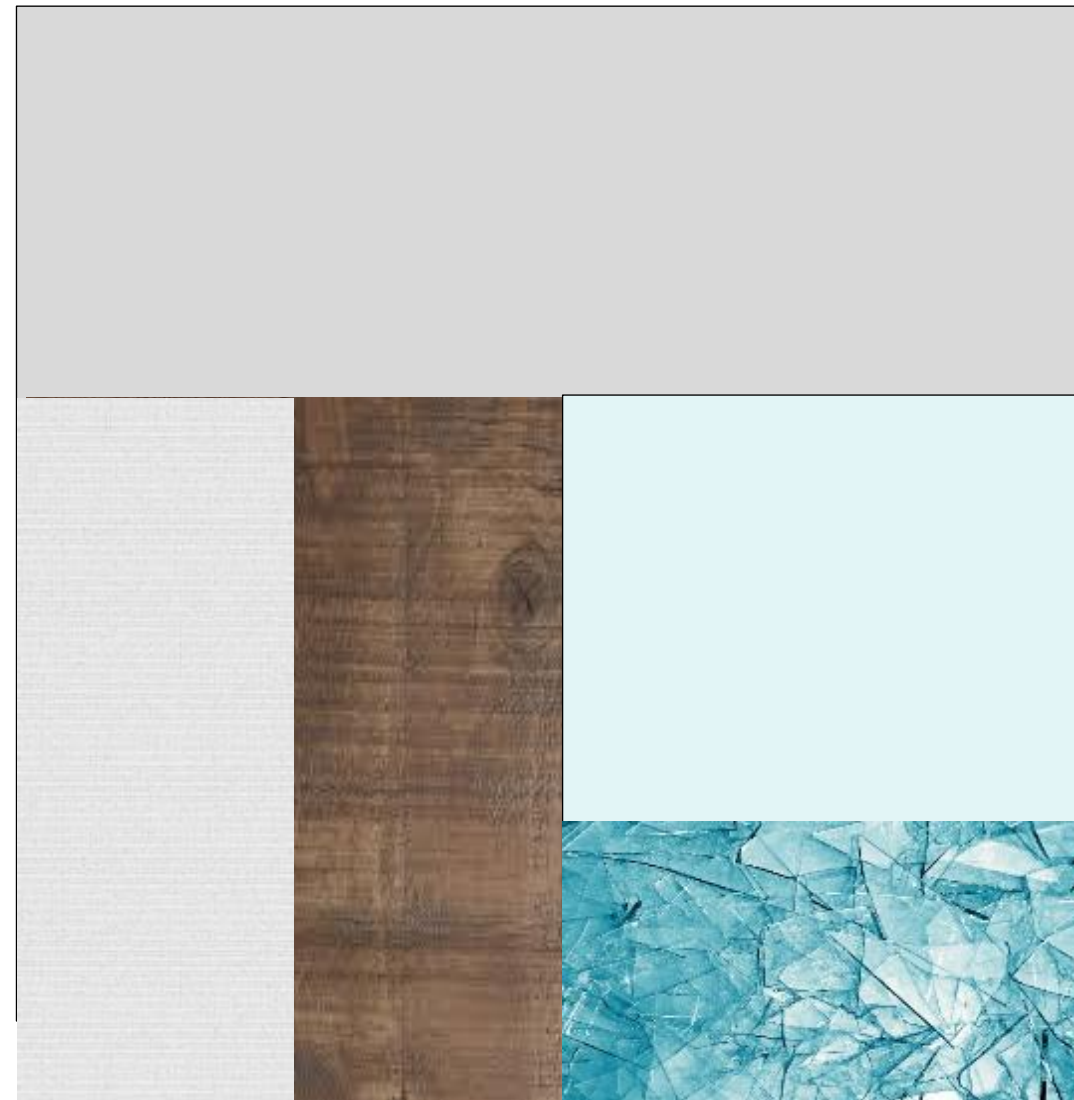
Department of  
Interior Design & Merchandising  
College of Human Ecology  
East Carolina University

## Architectural Finishes and Furniture Finishes

**Mackenzie Alala**

### Concept:

- Industrial/rustic blended with Coastal South design
- Open yet private workstations
- Neutral and clean color pallet with the use of greys
- Low, calm lighting
- Relaxing and welcoming pop of color with the use of blue as a symbol of the water
- Structure and movement with the focus on sea creatures
- The use of wood finishes to bring the rustic feel to the Coastal South
- Striped walls are used within the space to represent the movement of sea creatures through the ocean



**IDSN 2102**  
**Interior Design Fundamentals**  
**Professor Charles Gustina**

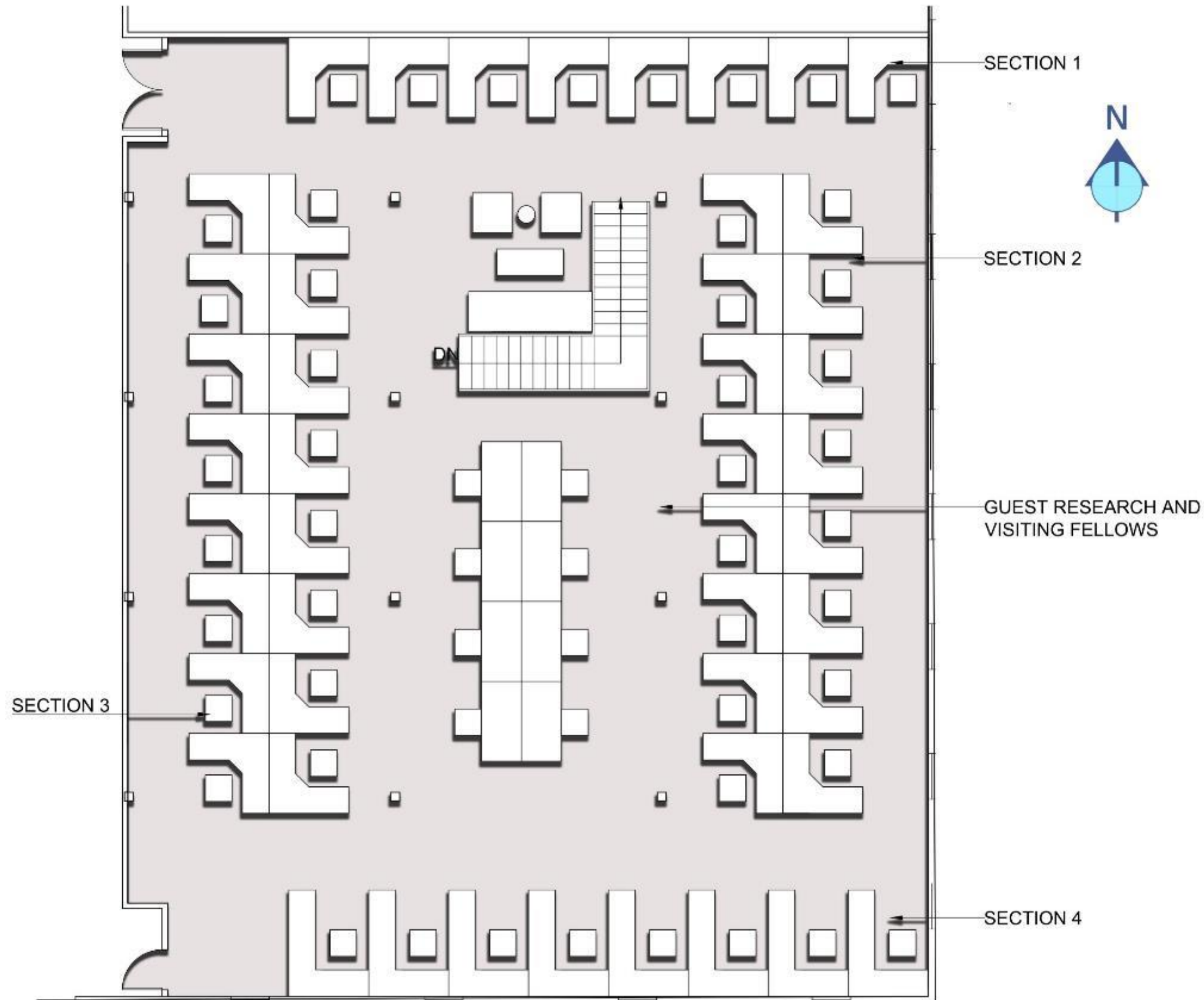
**Department of**  
**Interior Design & Merchandising**  
**College of Human Ecology**  
**East Carolina University**



**AutoCad Furniture Plan**

**Mackenzie Alala**

**IDSN 2102  
Interior Design Fundamentals  
Professor Charles Gustina**



**Department of  
Interior Design & Merchandising  
College of Human Ecology  
East Carolina University**

**SketchUp- Reception**



**Mackenzie Alala**

**IDSN 2102  
Interior Design Fundamentals  
Professor Charles Gustina**



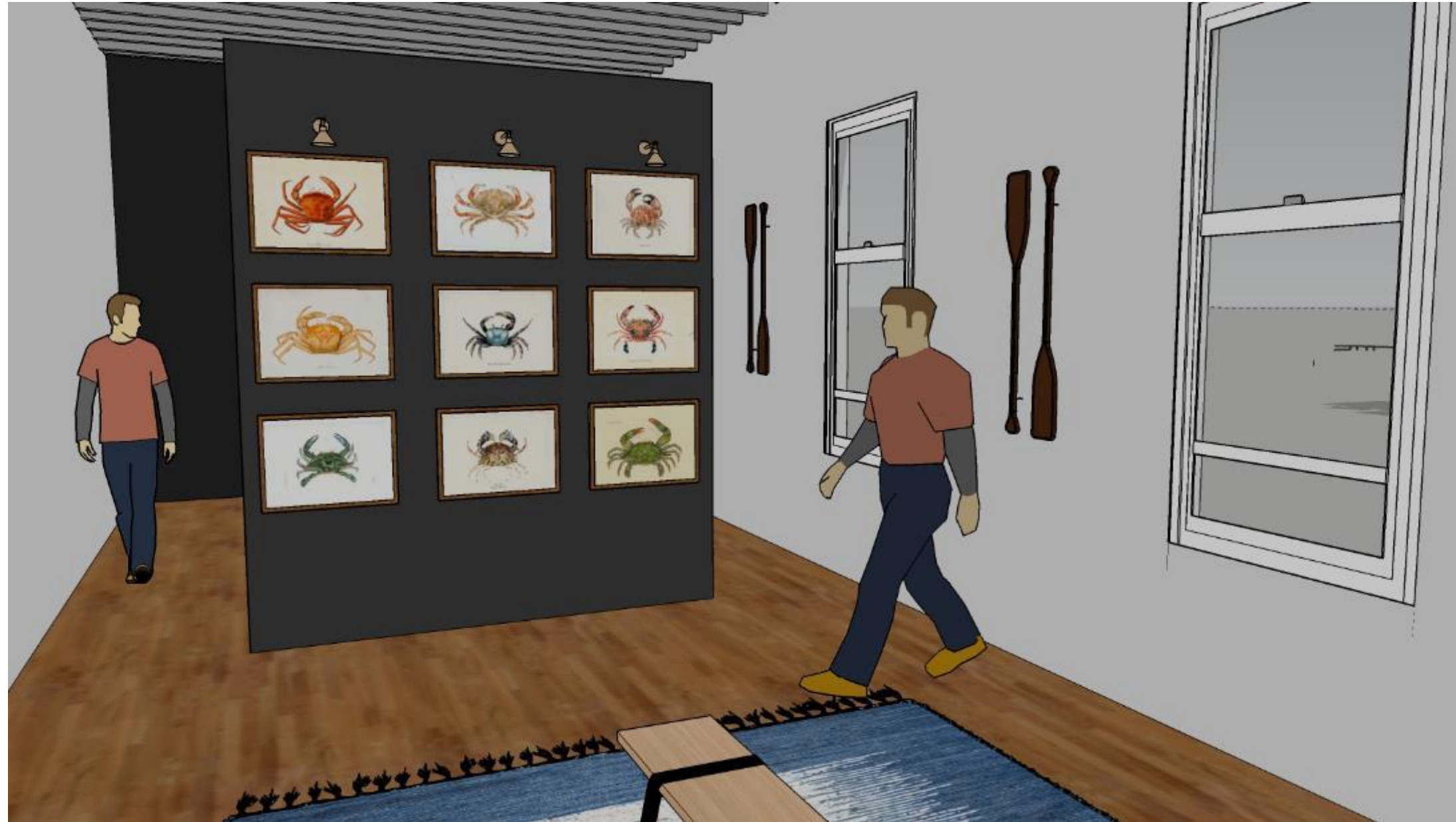
**Department of  
Interior Design & Merchandising  
College of Human Ecology  
East Carolina University**

**SketchUp- Exhibition**



**Mackenzie Alala**

**IDSN 2102  
Interior Design Fundamentals  
Professor Charles Gustina**



**Department of  
Interior Design & Merchandising  
College of Human Ecology  
East Carolina University**

**SketchUp- Pantry**



**Mackenzie Alala**

**IDSN 2102  
Interior Design Fundamentals  
Professor Charles Gustina**



**Department of  
Interior Design & Merchandising  
College of Human Ecology  
East Carolina University**

## SketchUp- Work Stations



**Mackenzie Alala**

IDSN 2102  
Interior Design Fundamentals  
Professor Charles Gustina



Department of  
Interior Design & Merchandising  
College of Human Ecology  
East Carolina University











**Architectural Finishes and Furniture  
Finish Inspiration**



**Mackenzie Alala**

**IDSN 2102  
Interior Design Fundamentals  
Professor Charles Gustina**

**Department of  
Interior Design & Merchandising  
College of Human Ecology  
East Carolina University**



**Mackenzie Alala**

IDSN 2101

Fall 2017

Portfolio 2