

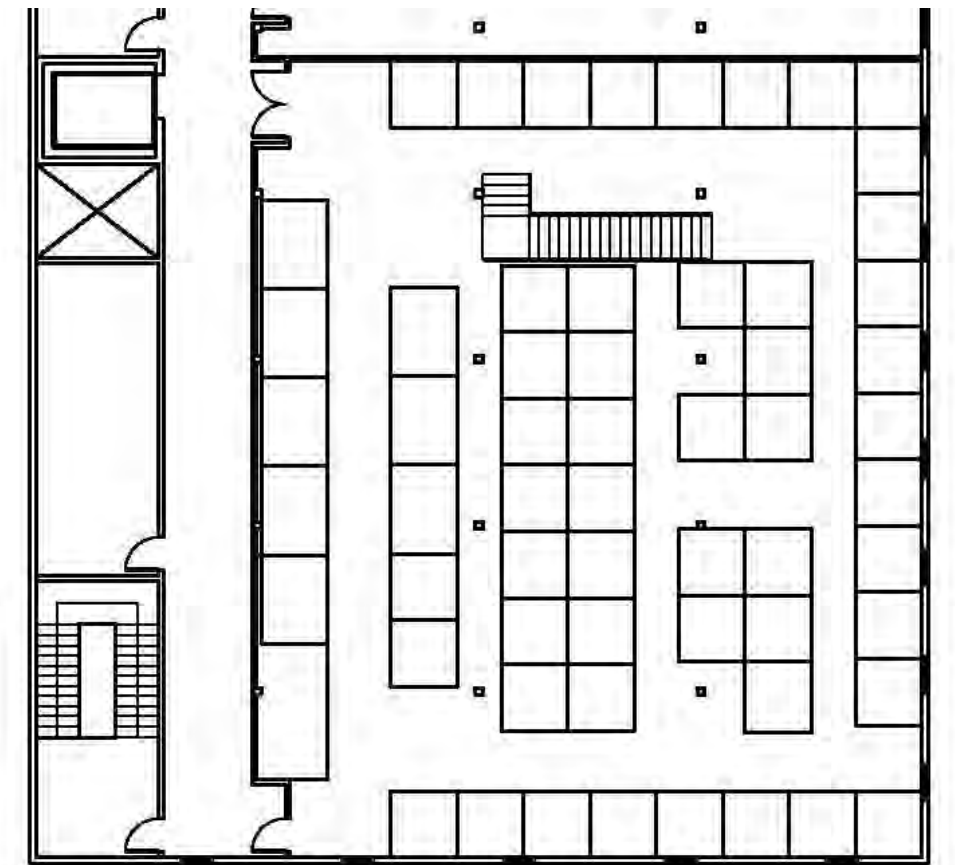
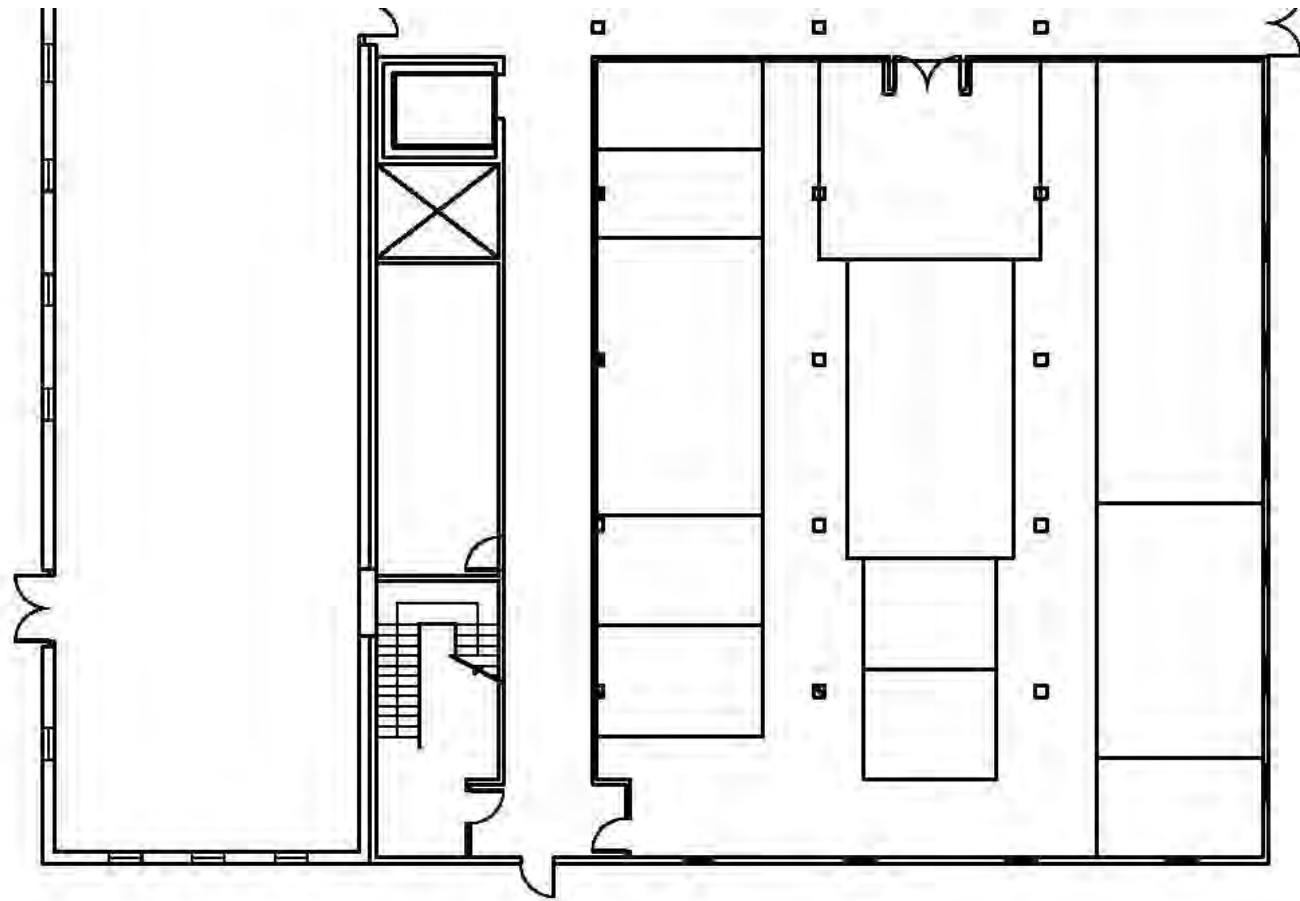
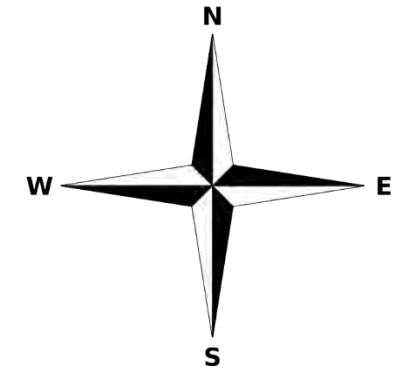
Portfolio Two

IDSN 2102

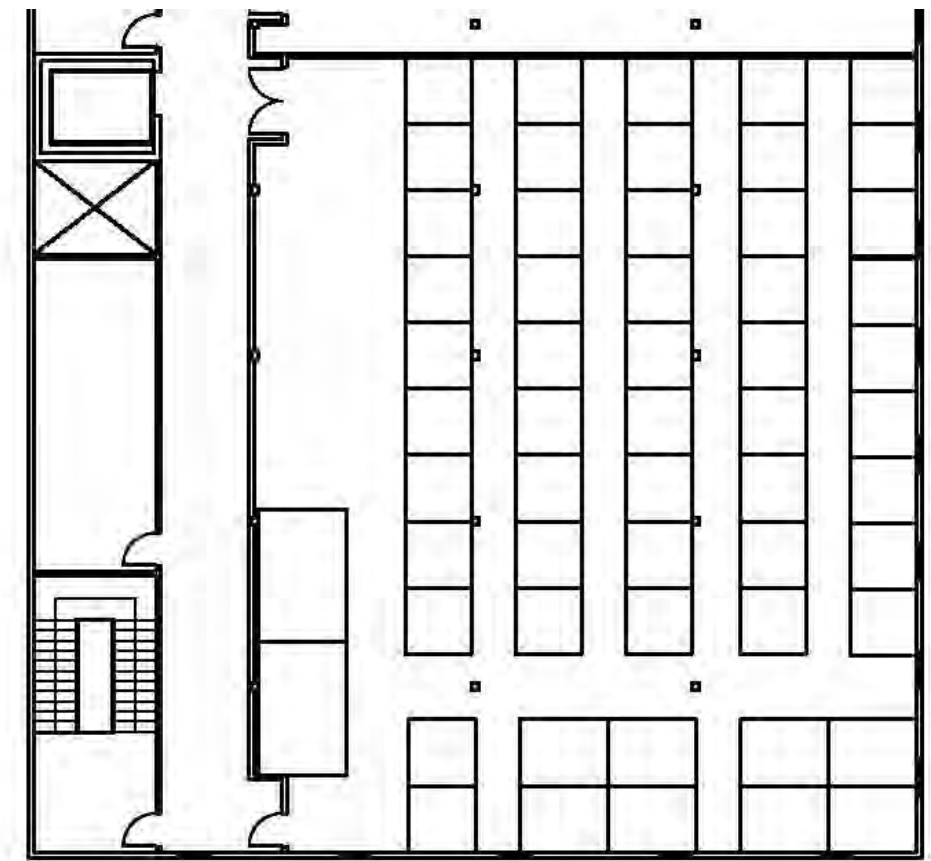
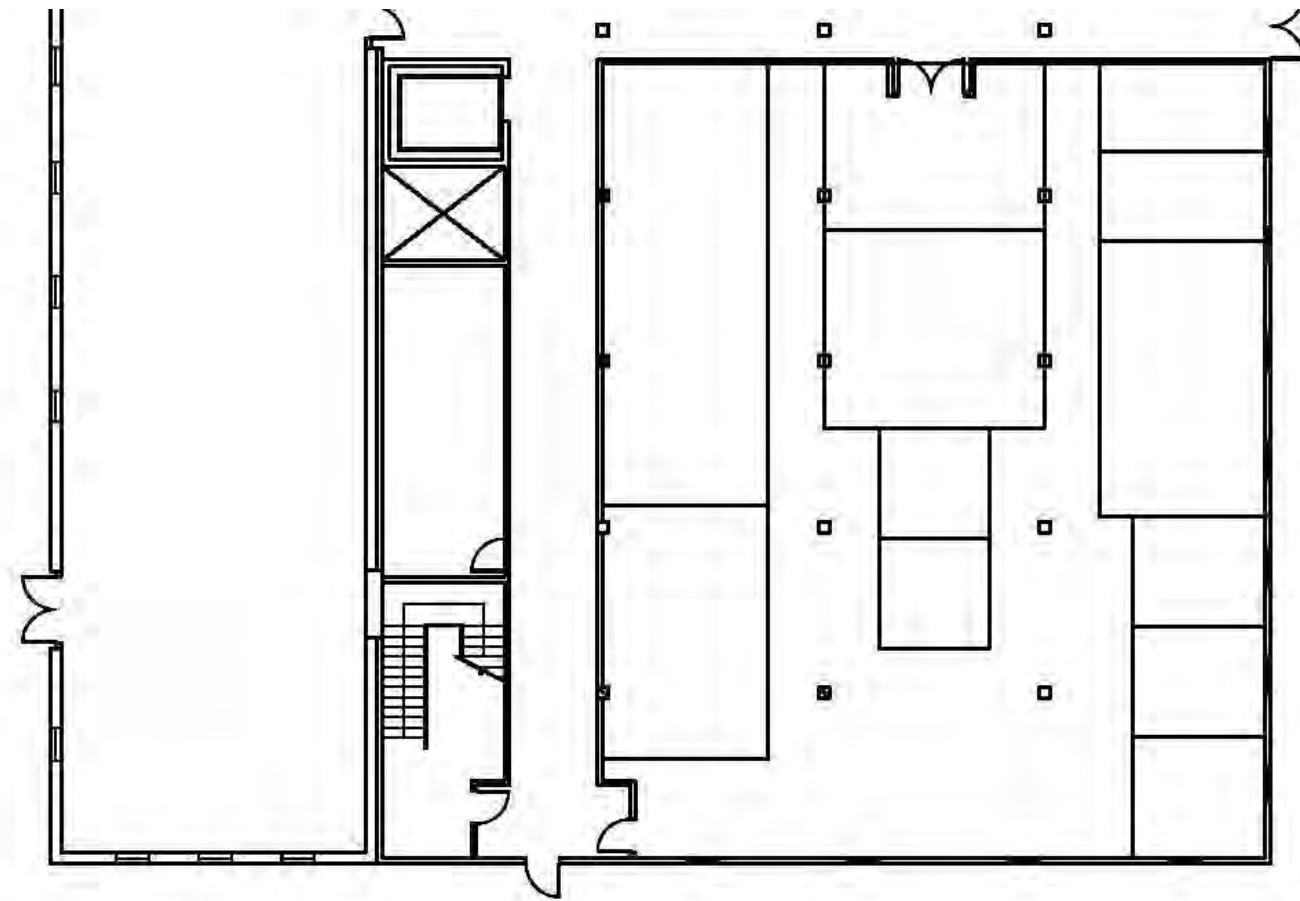
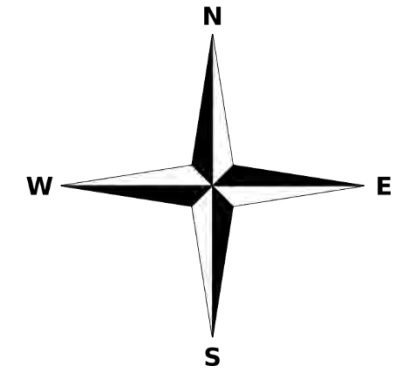
Professor Gustina

Jacob Austin

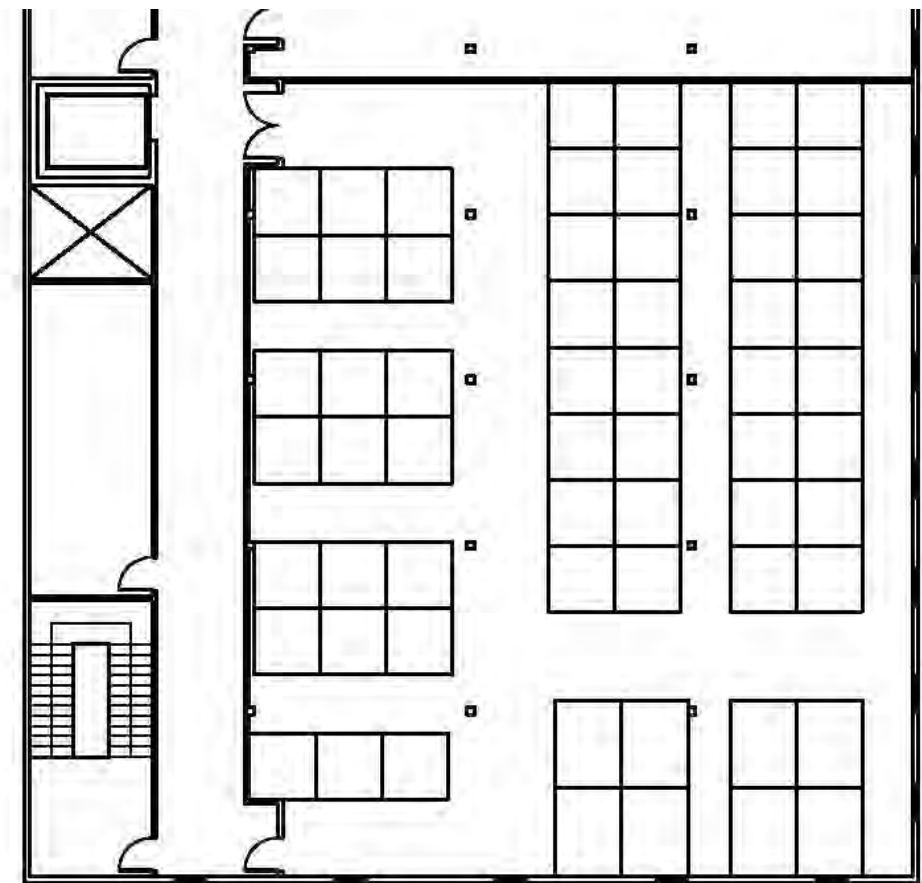
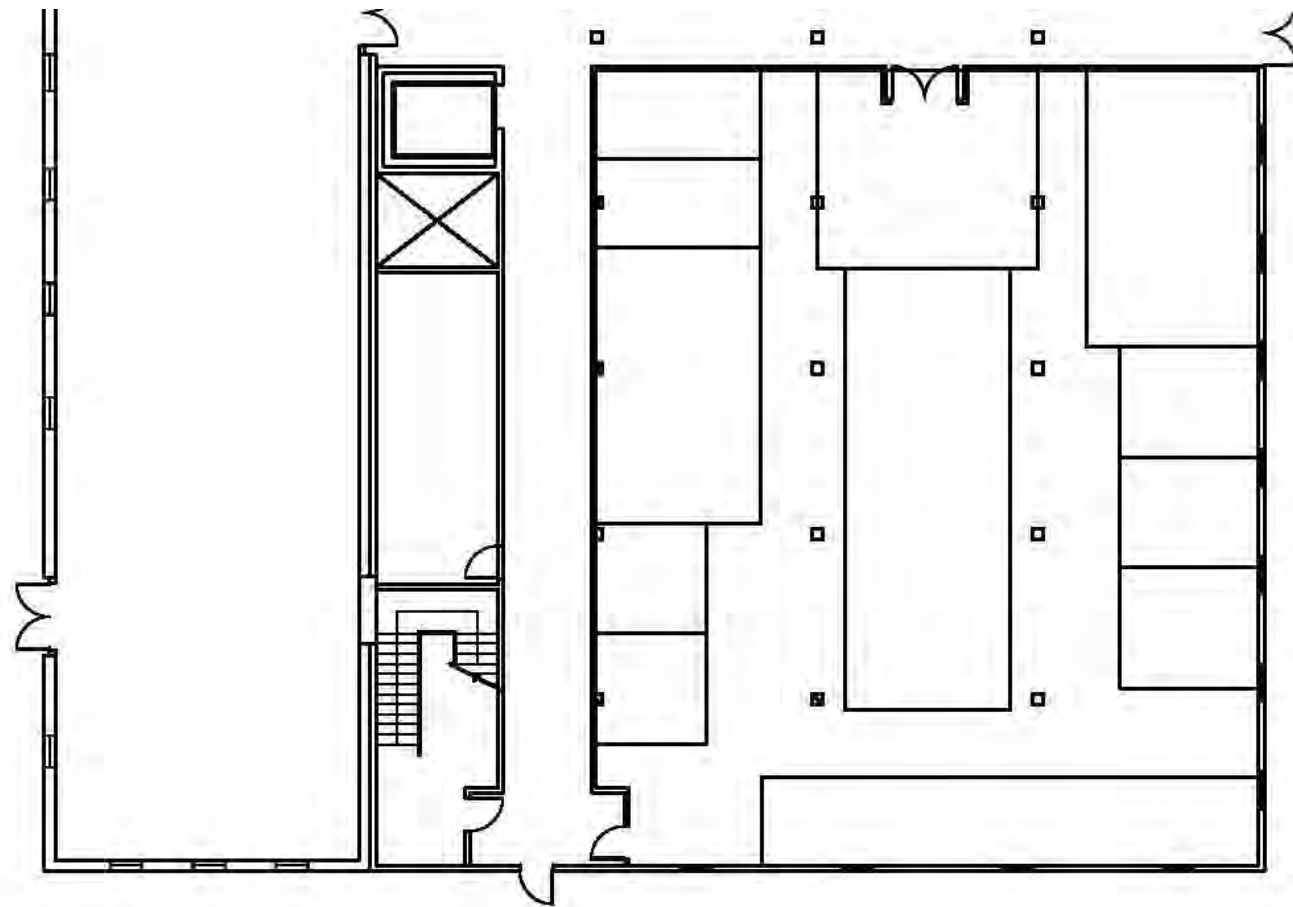
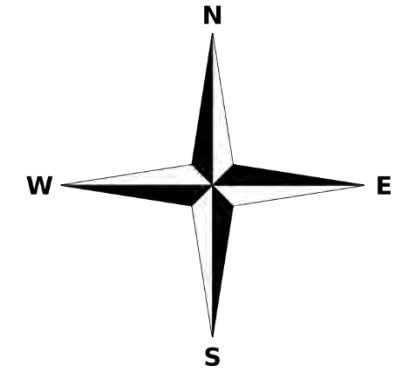
Space Plan Sketch 1



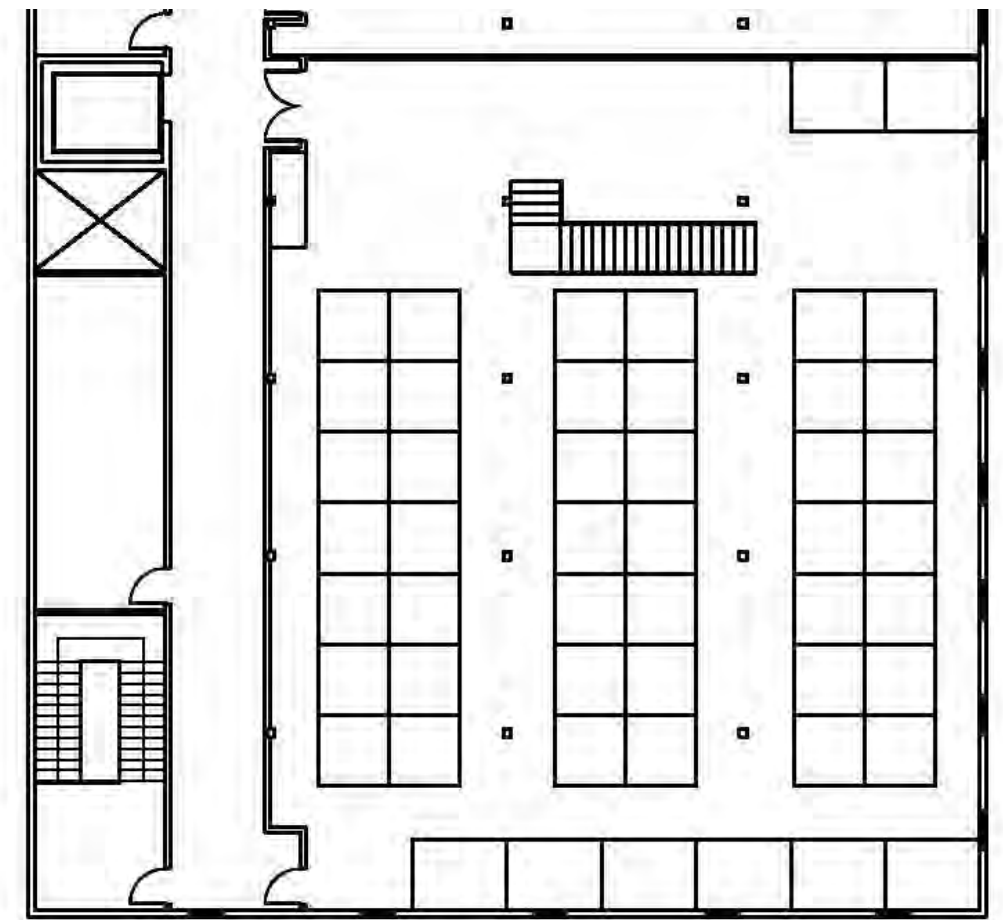
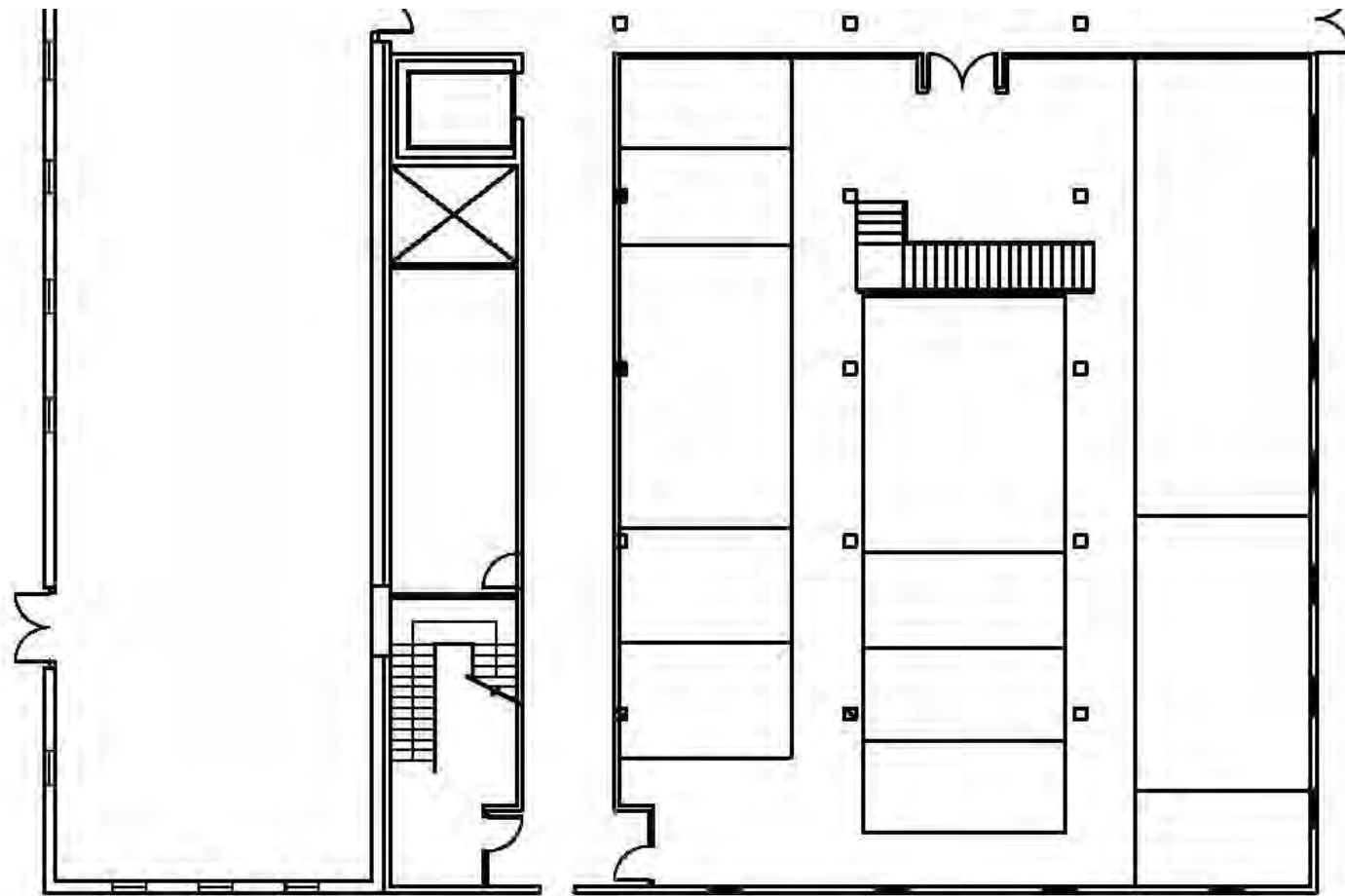
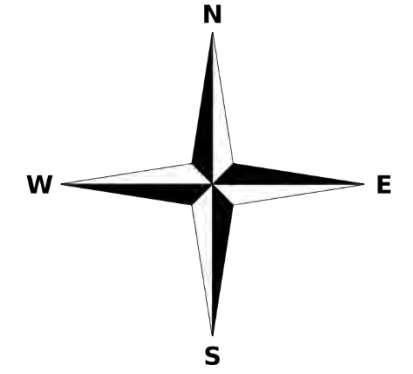
Space Plan Sketch 2



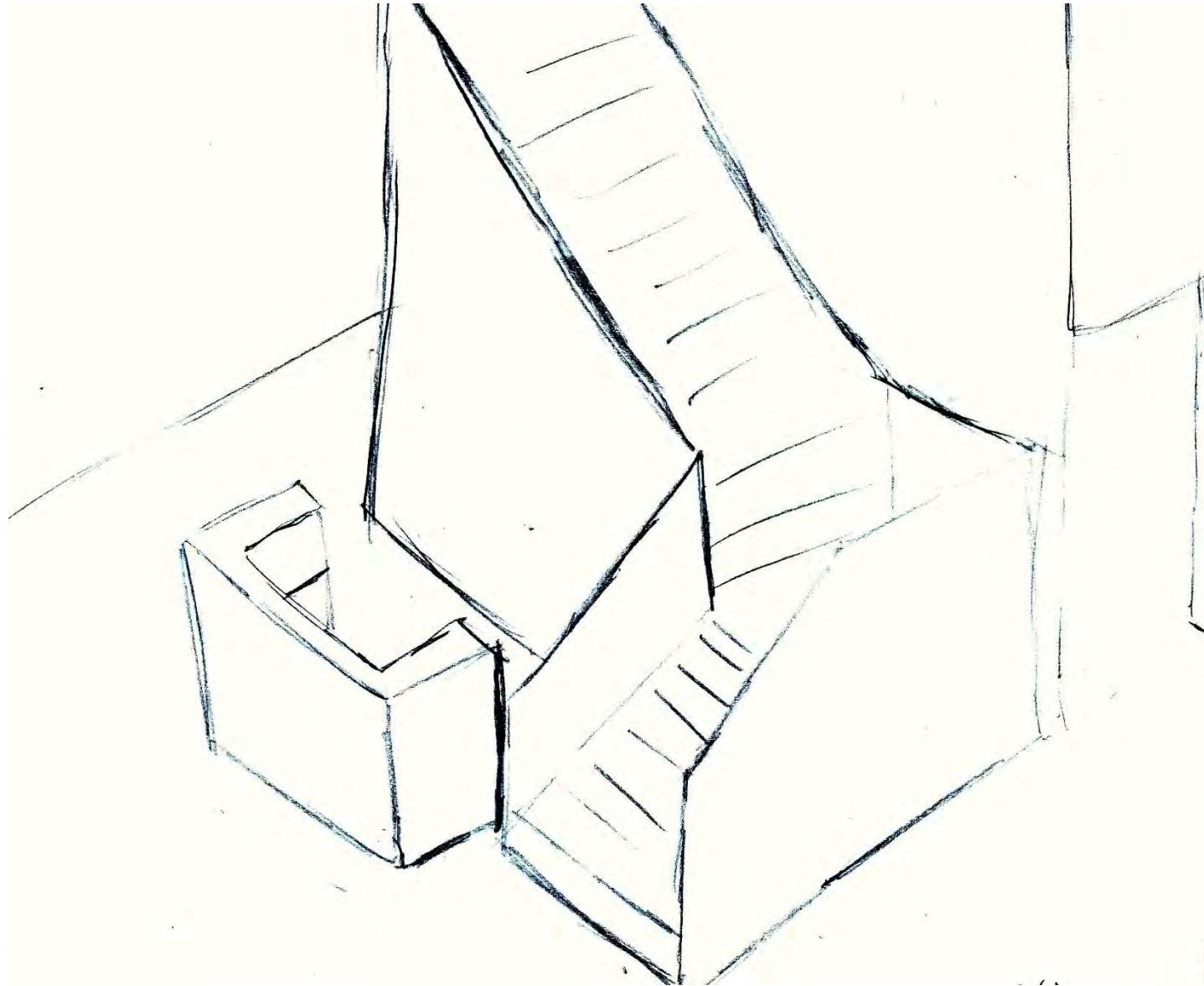
Space Plan Sketch 3



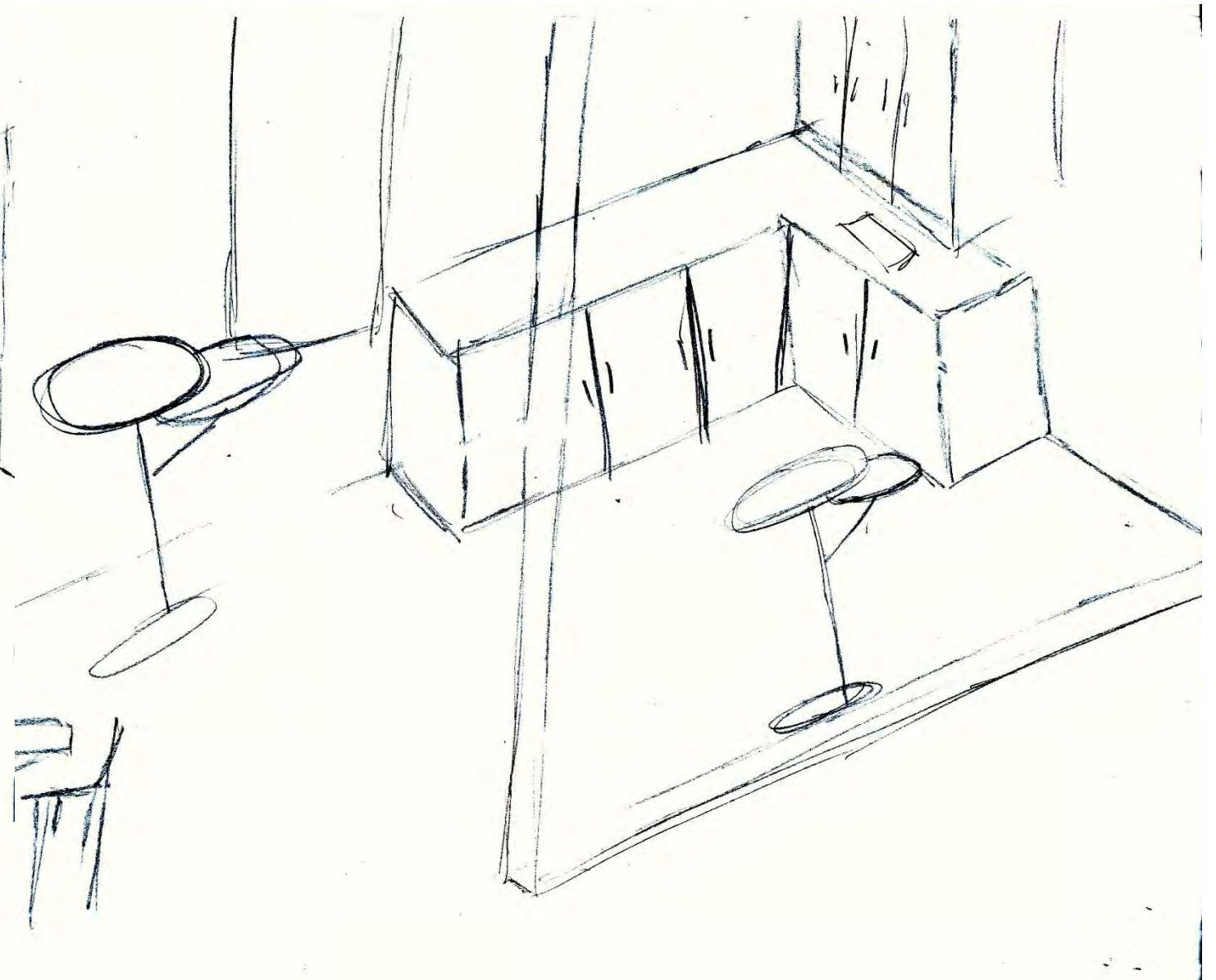
Space Plan Sketch 4



Perspective Sketches

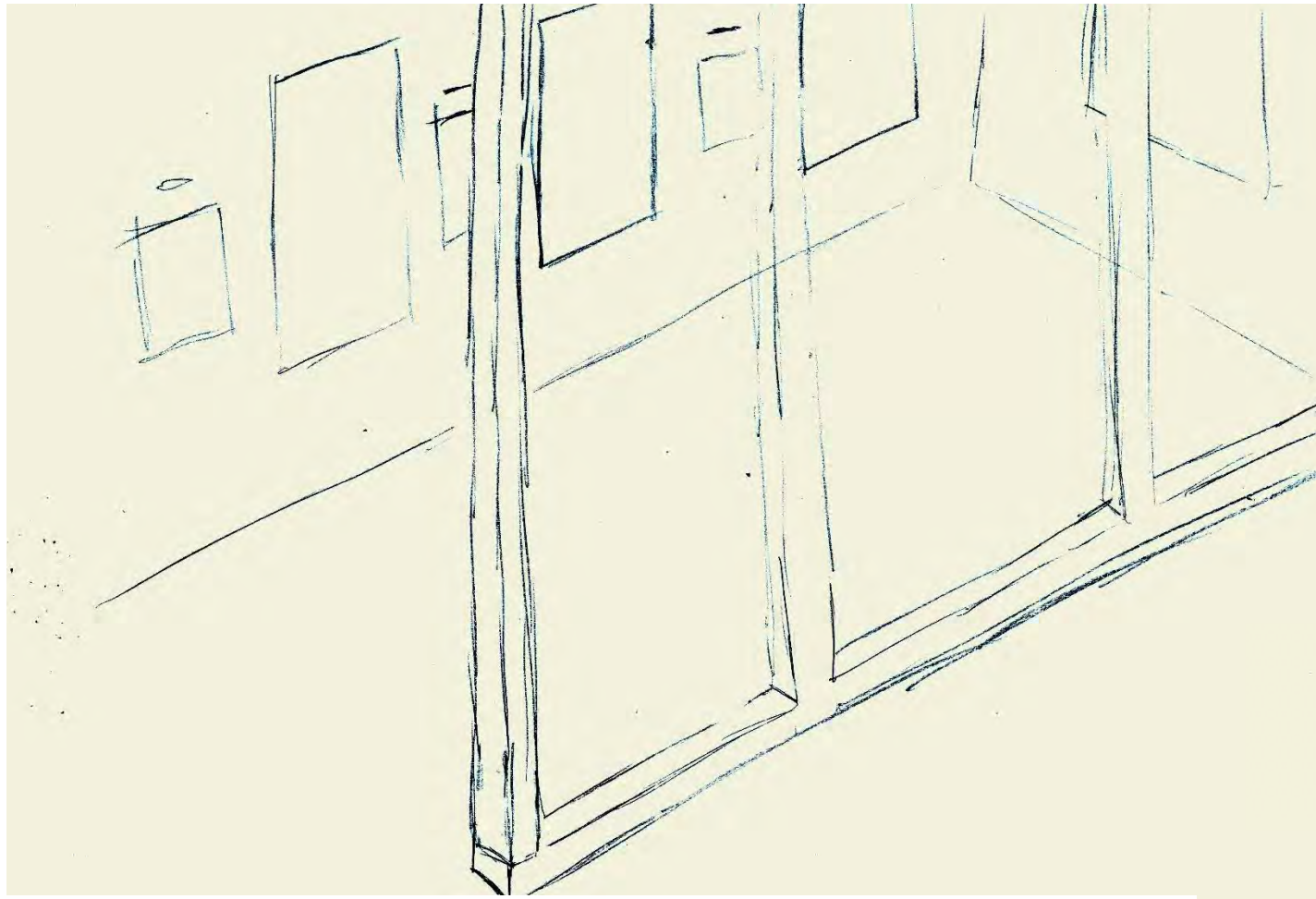


Entry

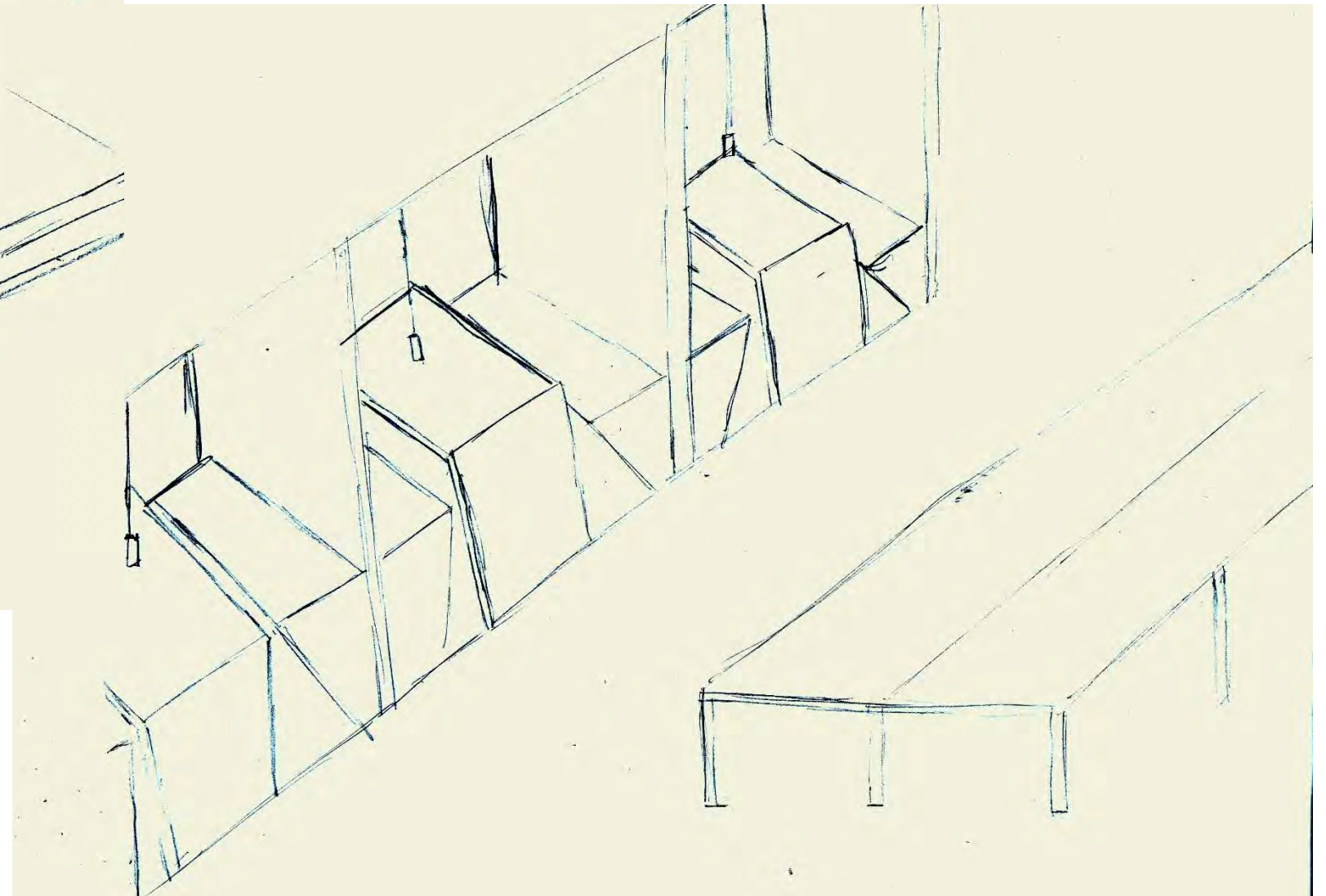


Pantry

Perspective Sketches

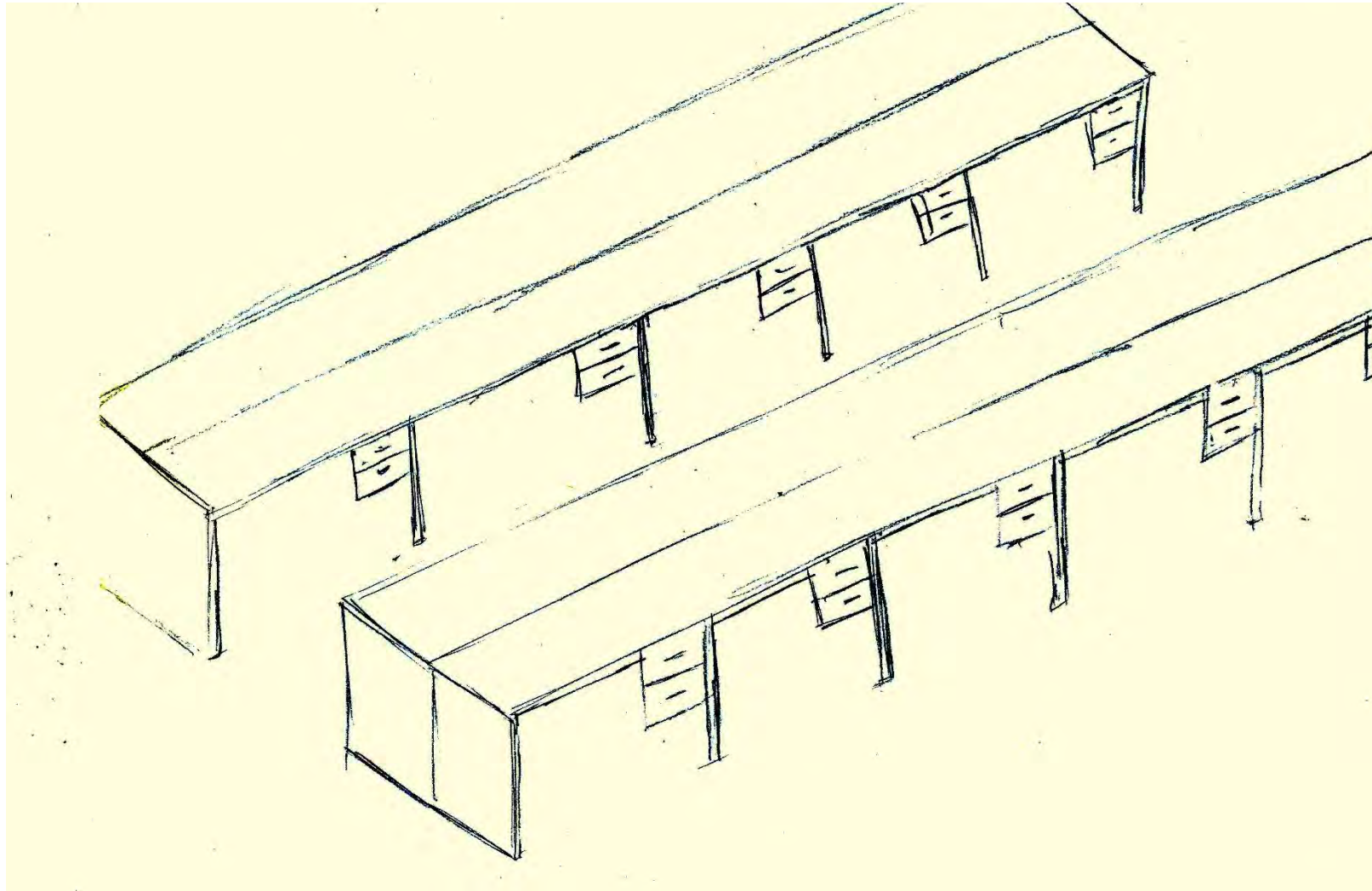


Exhibition



Booths beside Workstations

Perspective Sketches



Workstations

Sketchup Model-Entry



Sketchup Model-Exhibition



Sketchup Model-Pantry

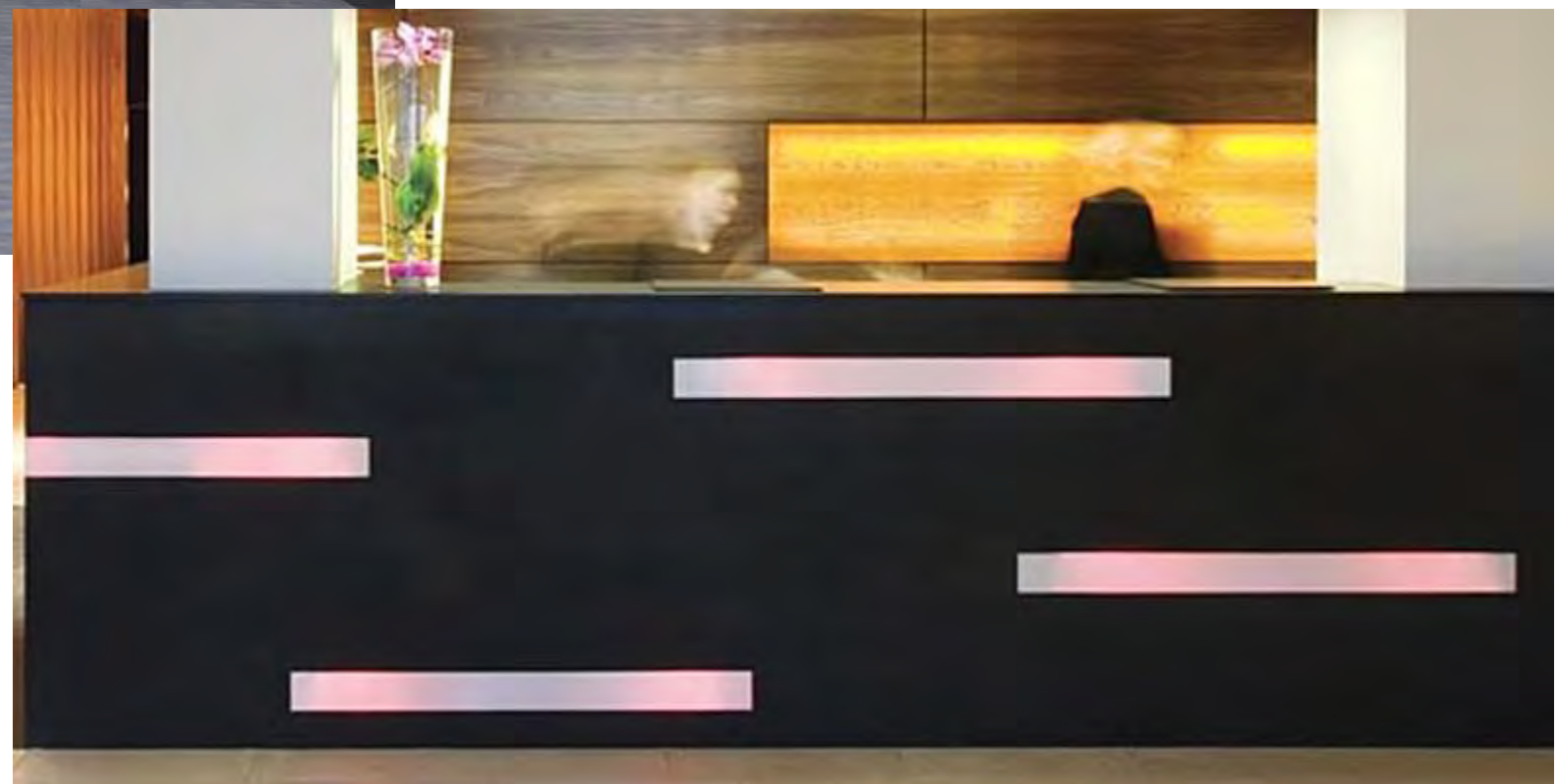


Sketchup Model-Work Area



Inspiration

Concept Statement—The idea of the gateway Center is to support group Working with open workstations. The idea of the costal south is perceived by the natural colors and the idea of sand dunes. The curvilinear forms of the dunes relate to the curvilinear flow of the building.

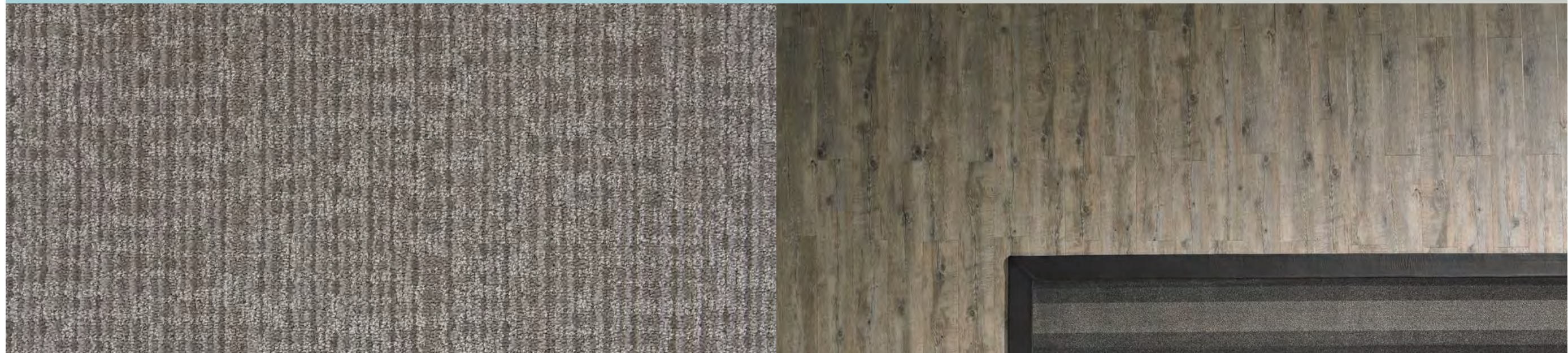


Architectural finishes

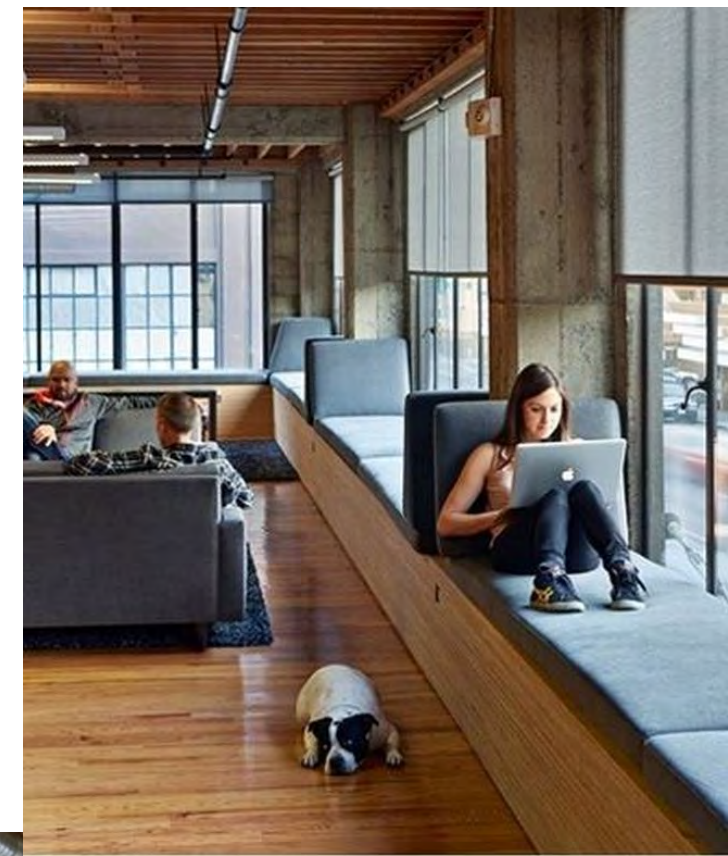
Historical Precedents- The finishes I chose incorporate historical precedents by using natural colors and materials found in the costal south. The wood floors look a lot like what the original floors would have looked like.

SW 6772
Cay
Interior / Exterior
Locator Number: 165-C2

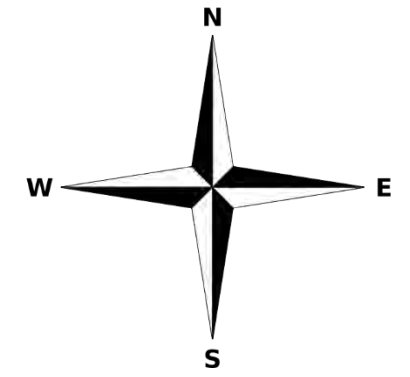
SW 7057
Silver Strand
Interior / Exterior
Locator Number: 237-C1



Furniture/Finishes



Final Plan-First Floor



Final Plan-Second Floor

