

---

# **Portfolio 2**

---

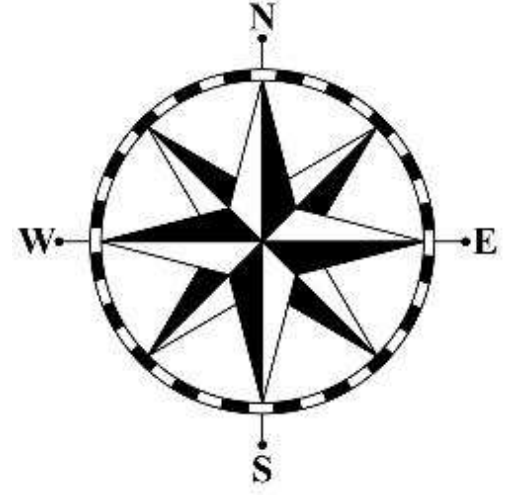
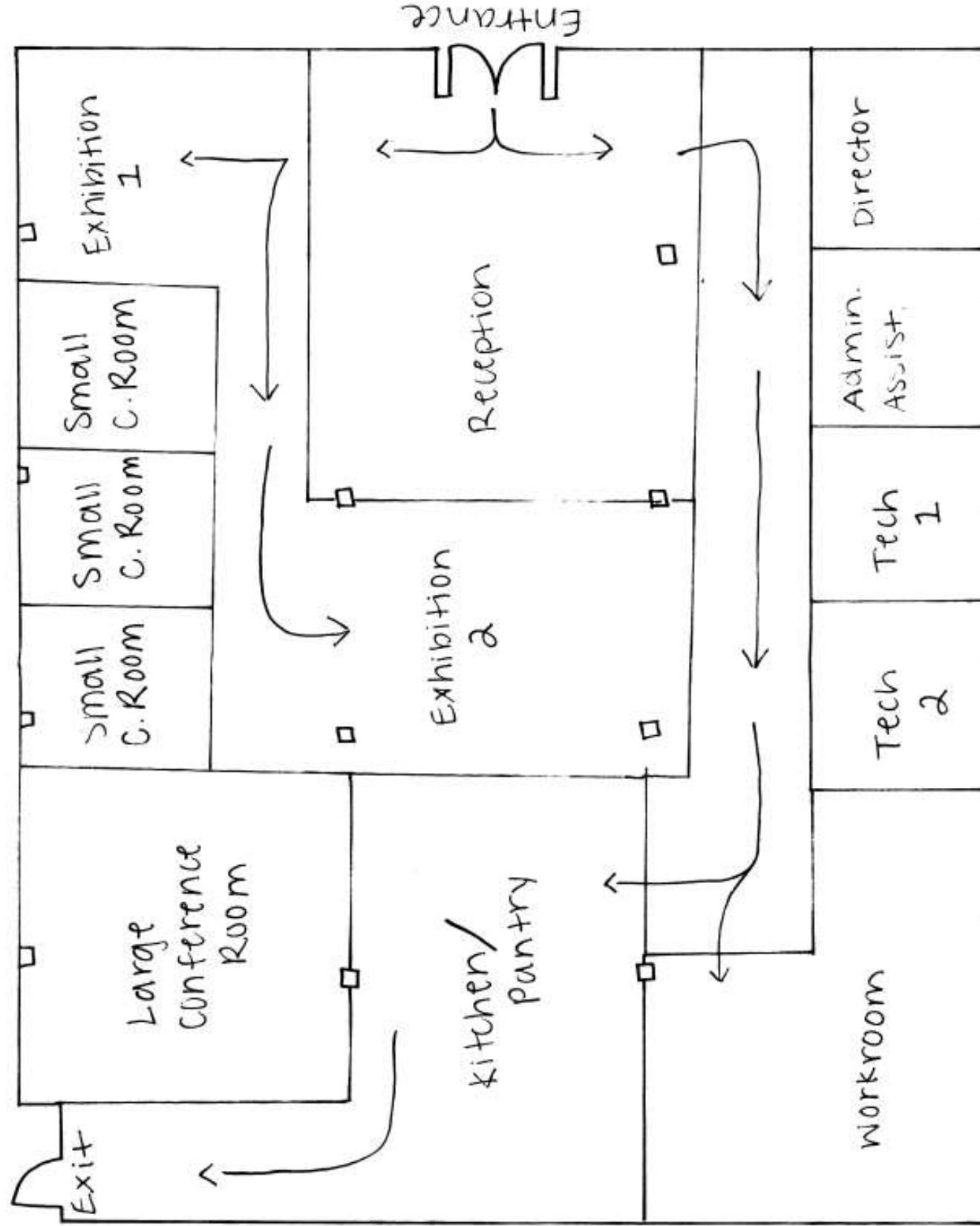
**Sarah Beyer**

**Professor Charles Gustina**

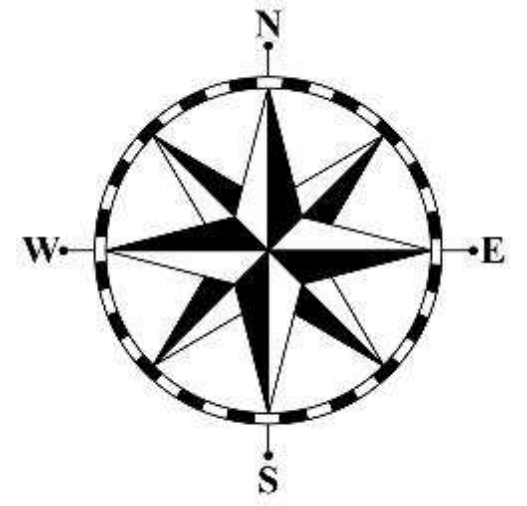
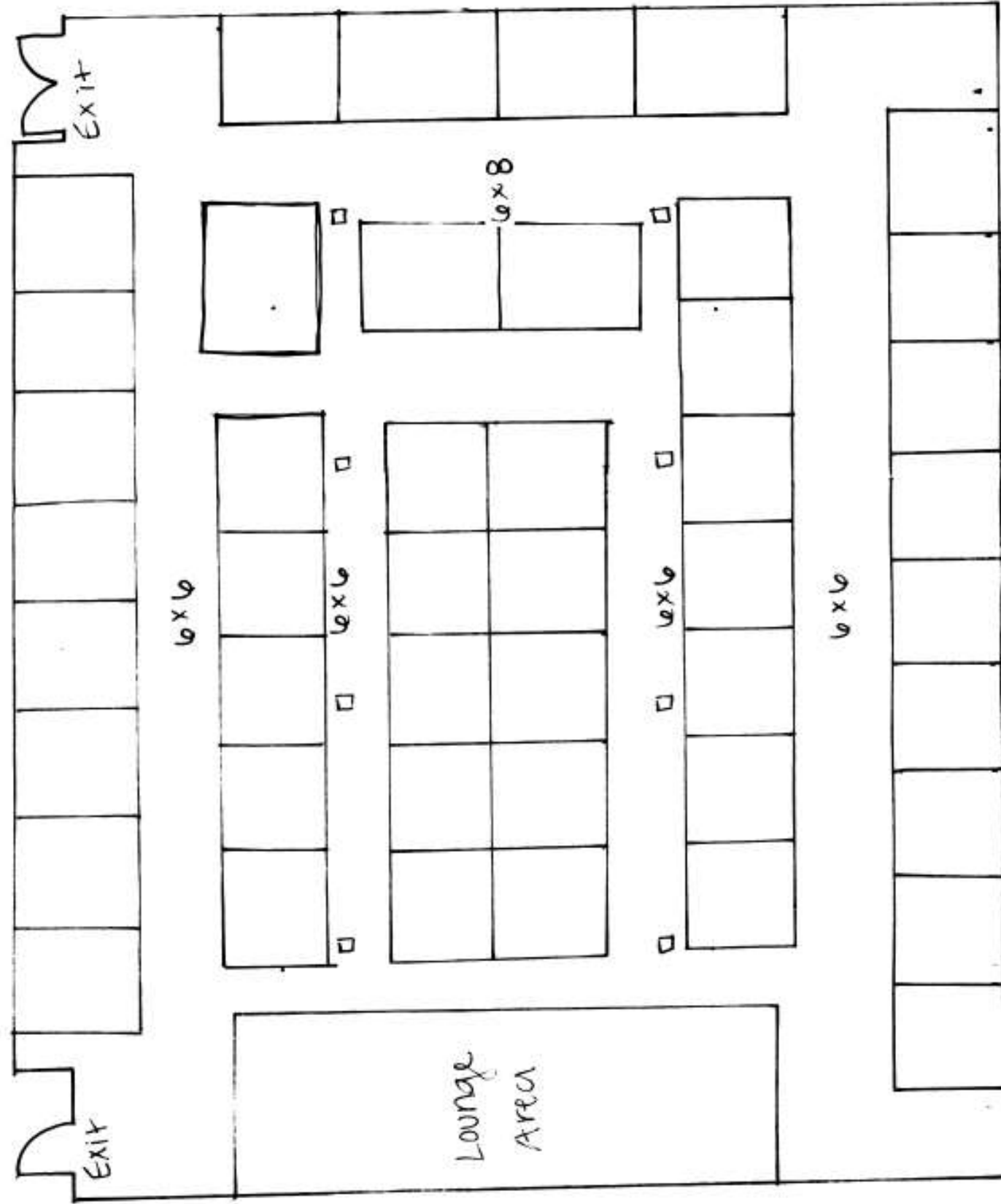
**East Carolina University**

**Department of Interior Design and Merchandising**

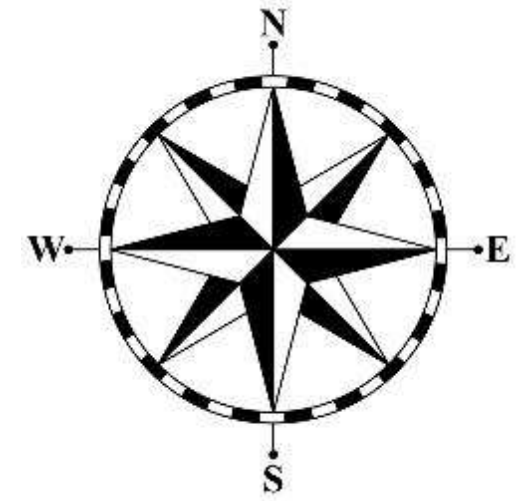
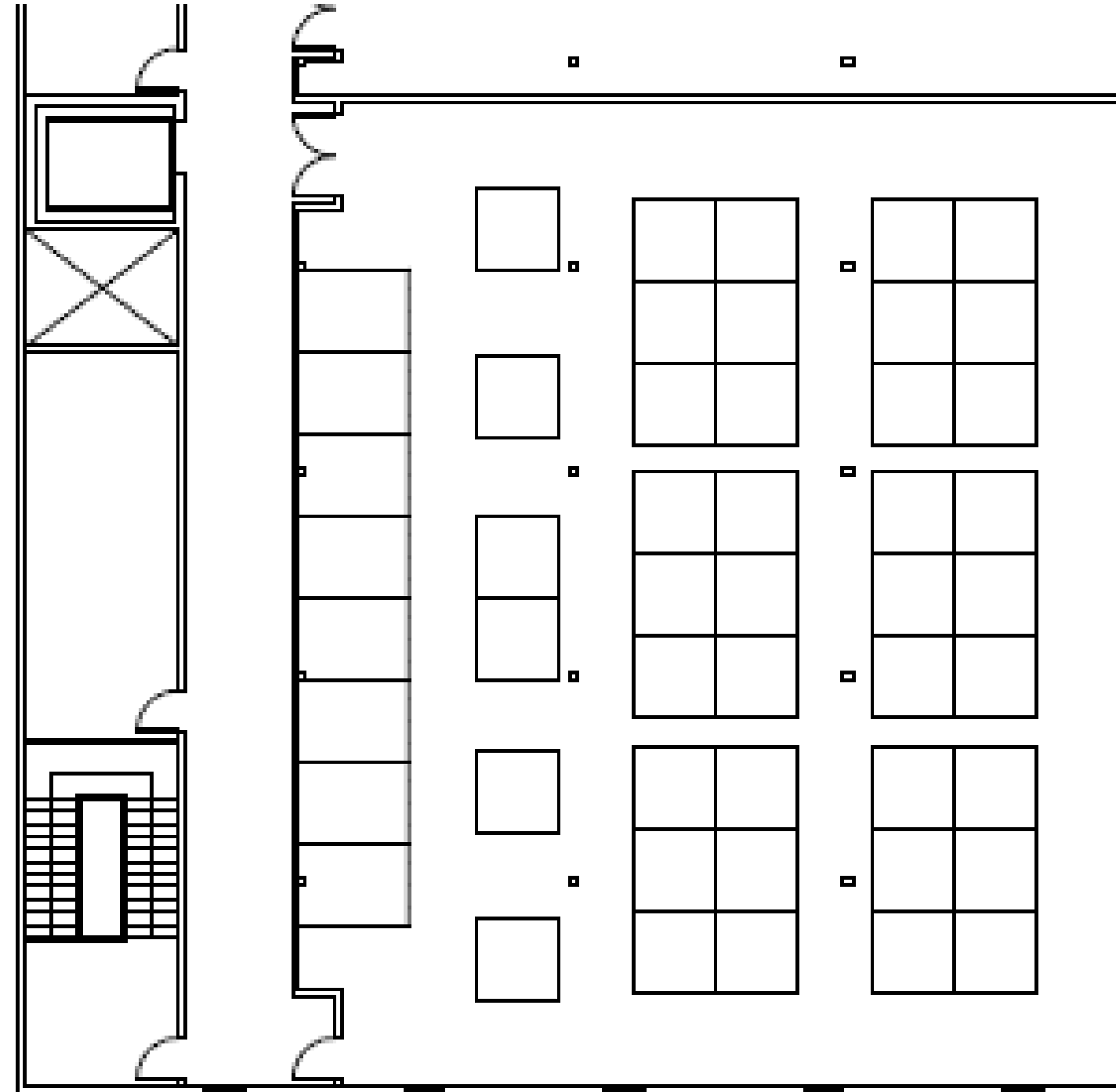
# Hand-Drawn Space Plan Sketches



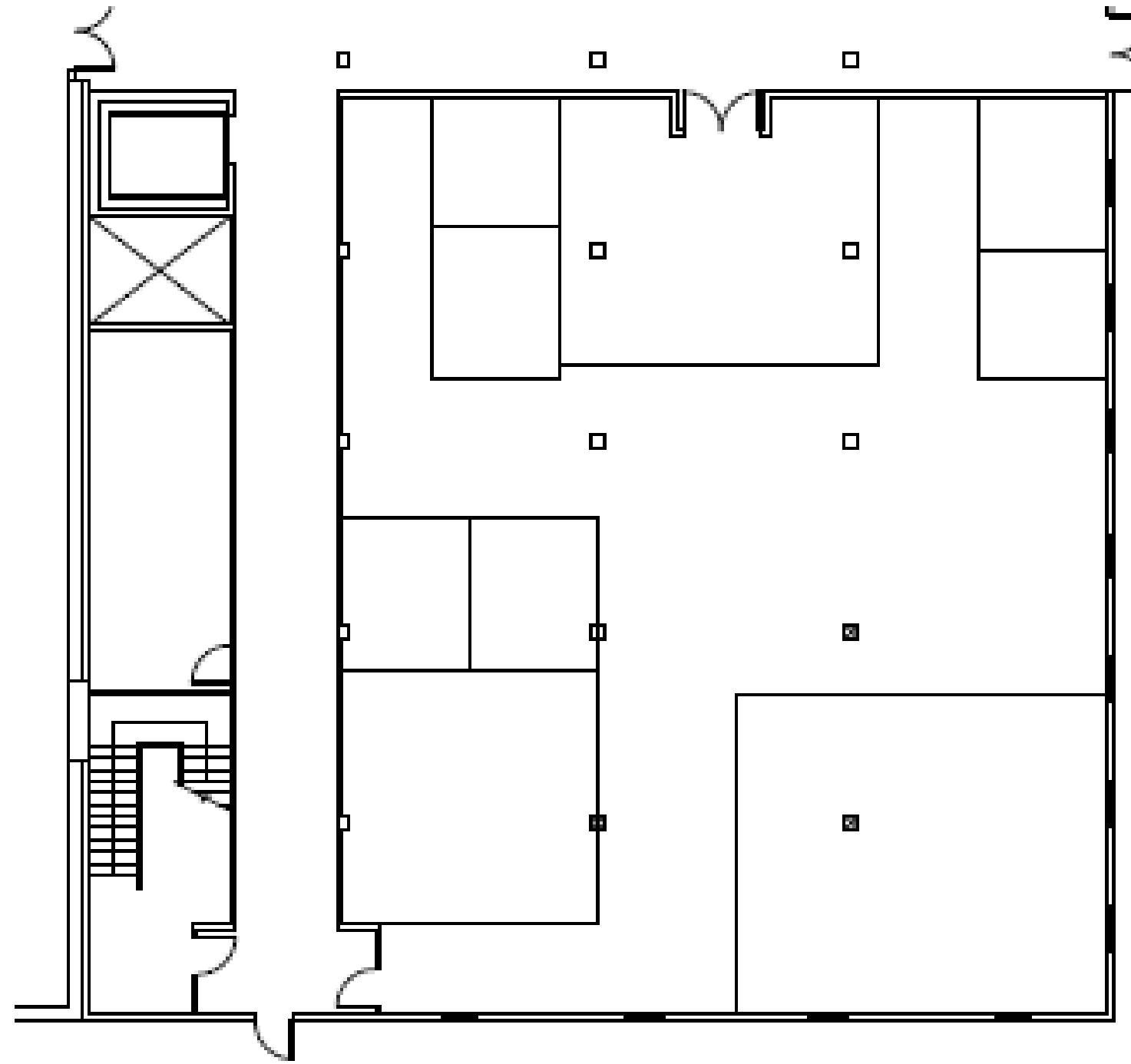
# Hand-Drawn Space Plan Sketches



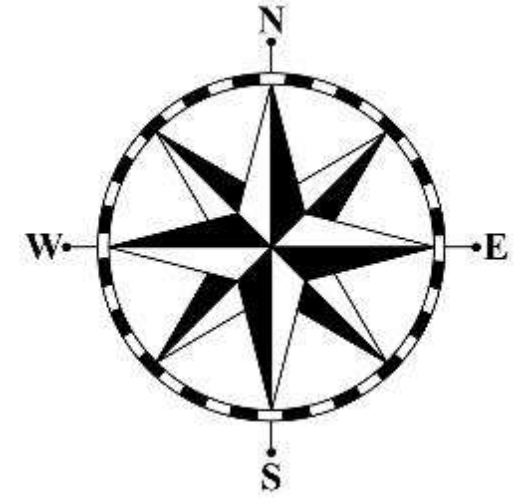
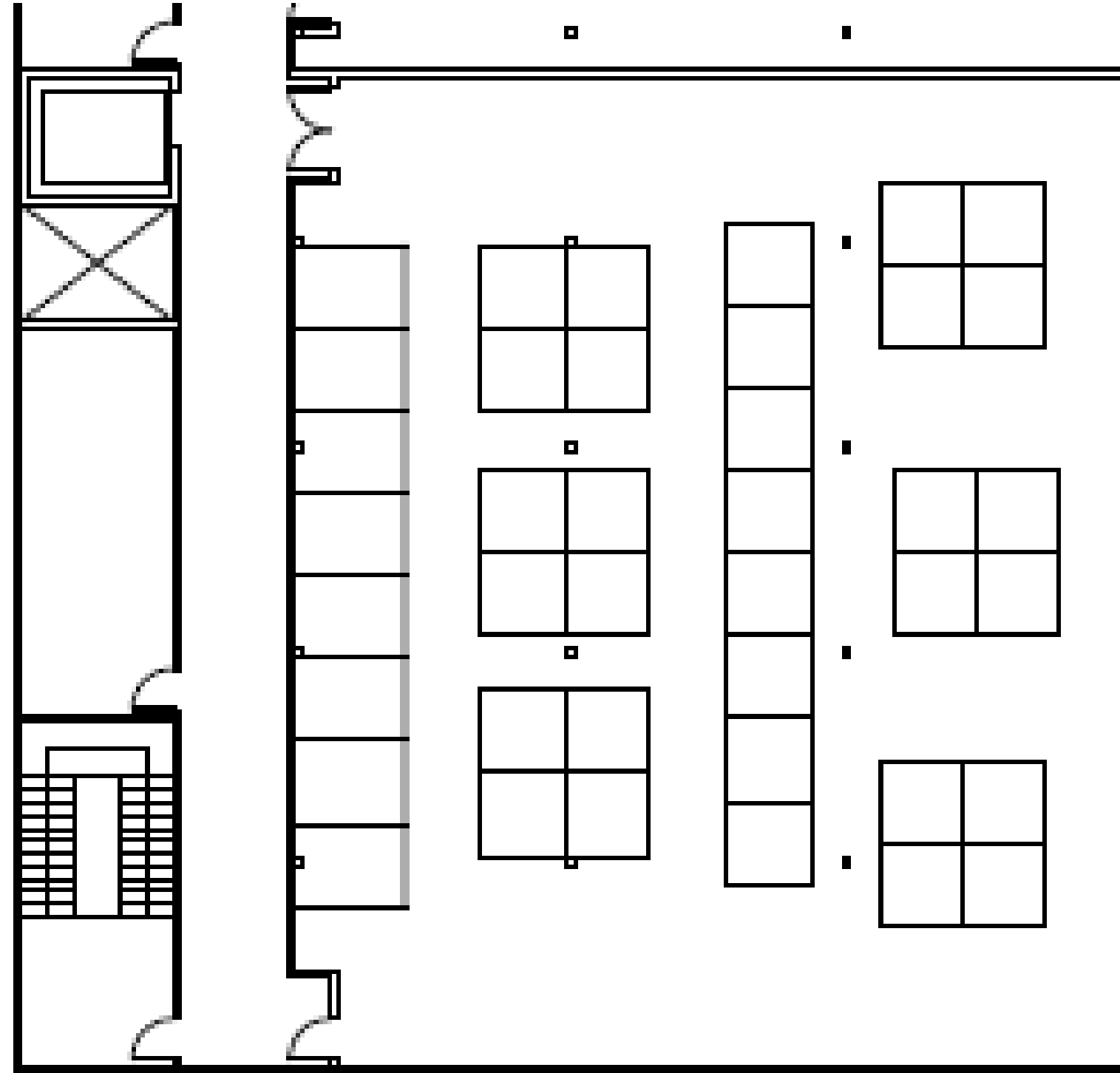
# Autocad Space Plan Sketches (1 Up)



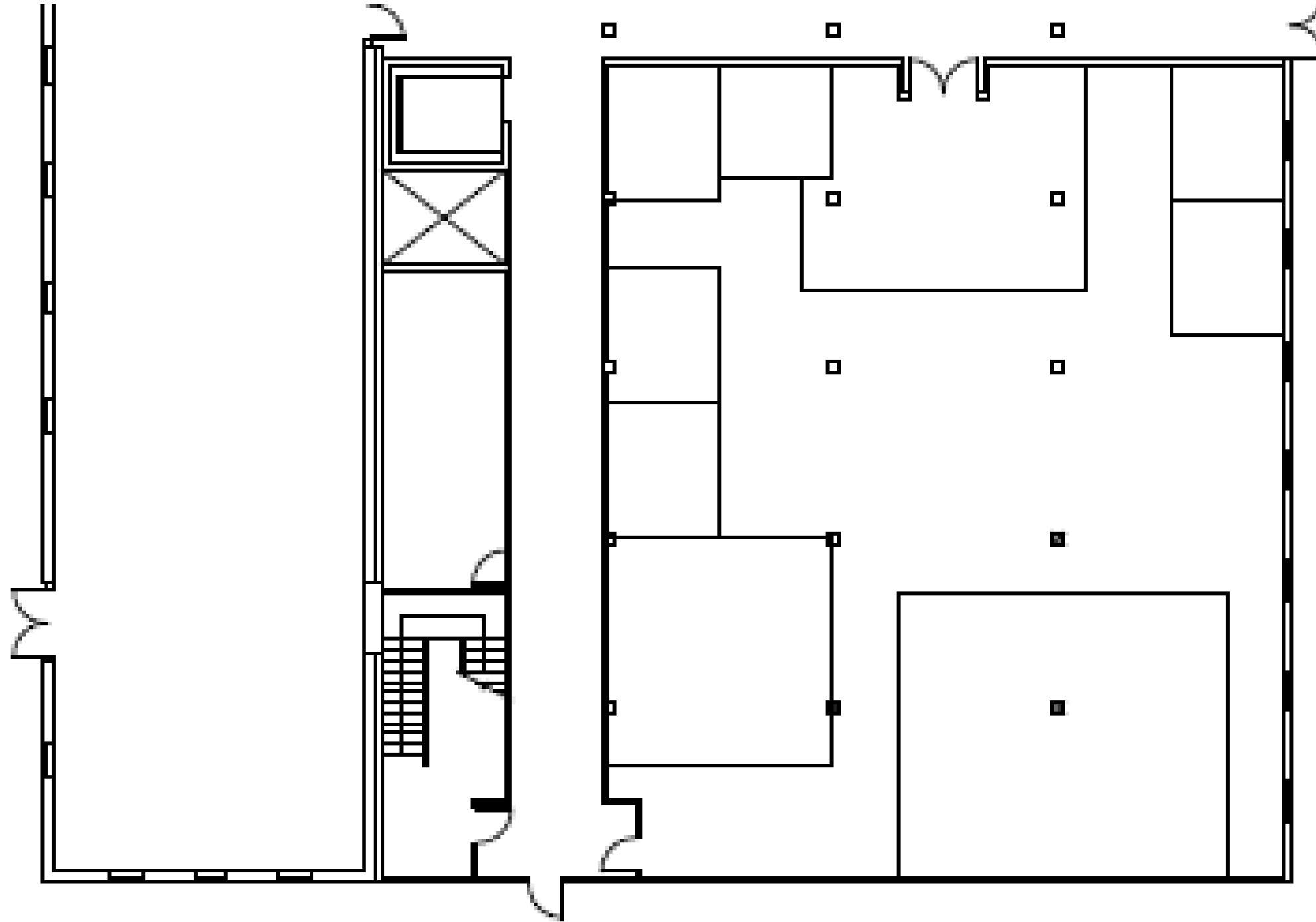
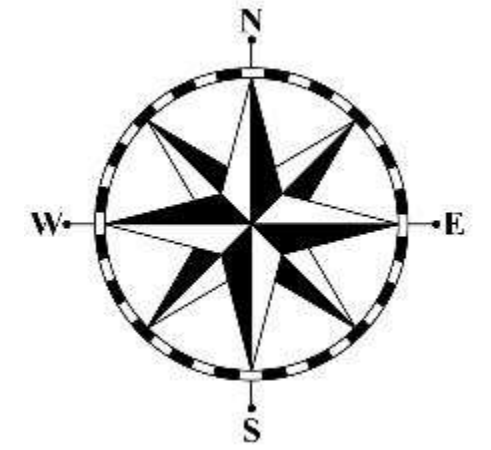
# Autocad Space Plan Sketches (1 Down)



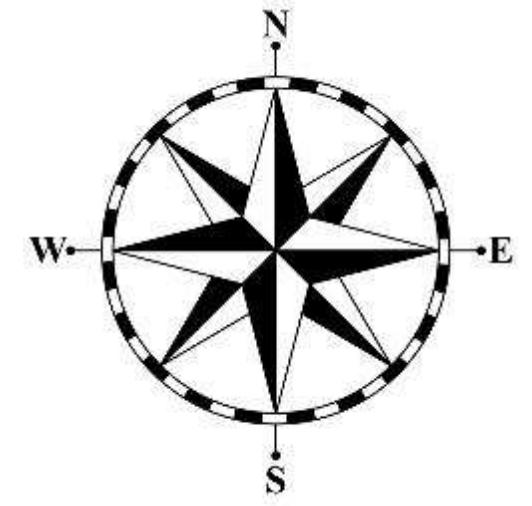
# Autocad Space Plan Sketches (2 Up)



# Autocad Space Plan Sketches (2 Down)

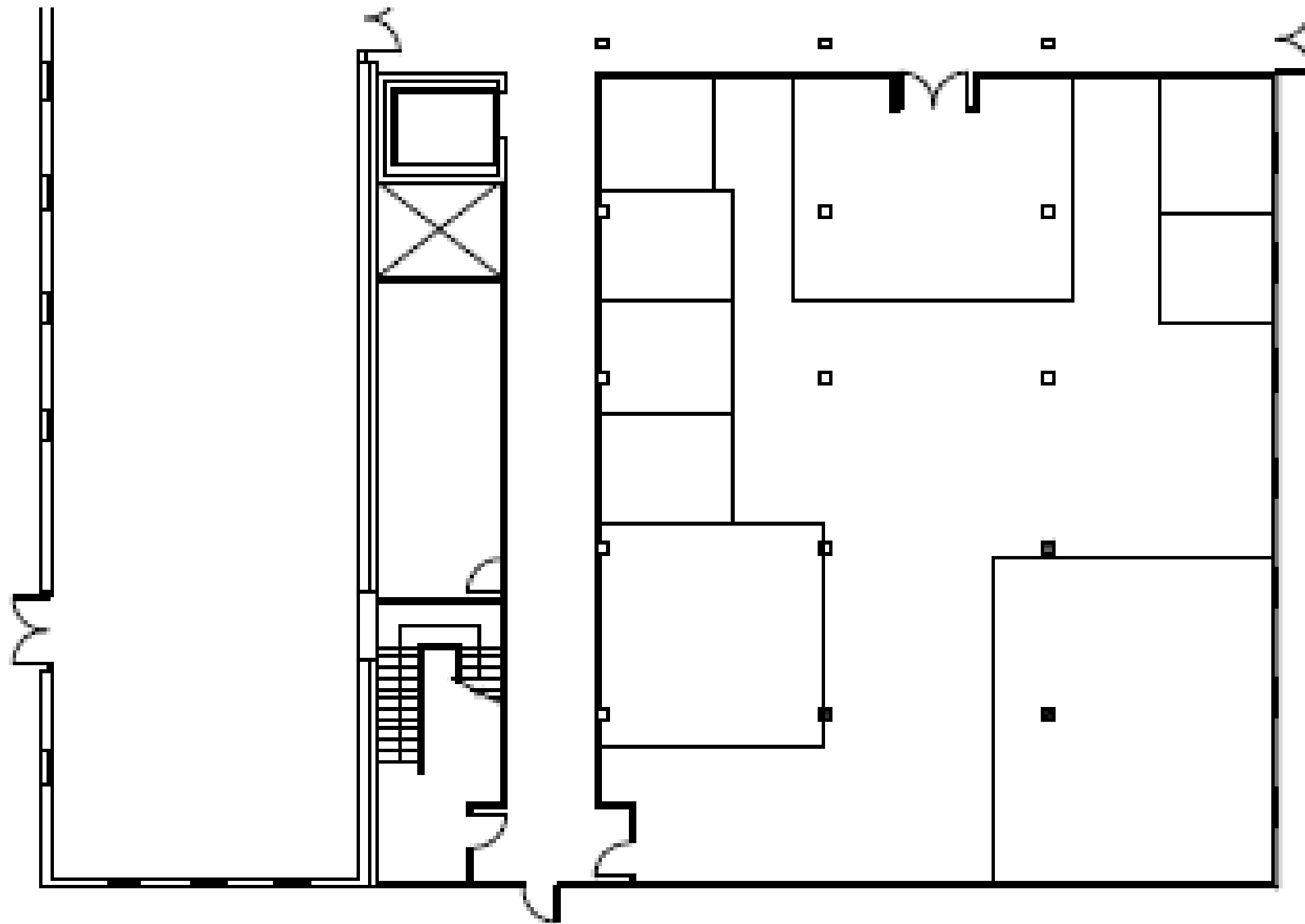
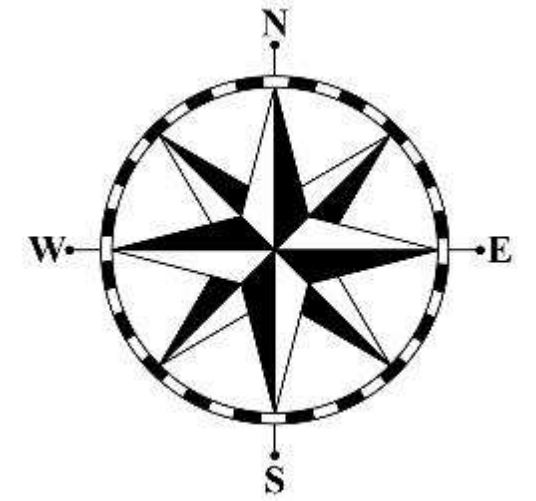


# Autocad Space Plan Sketches (3 Up)

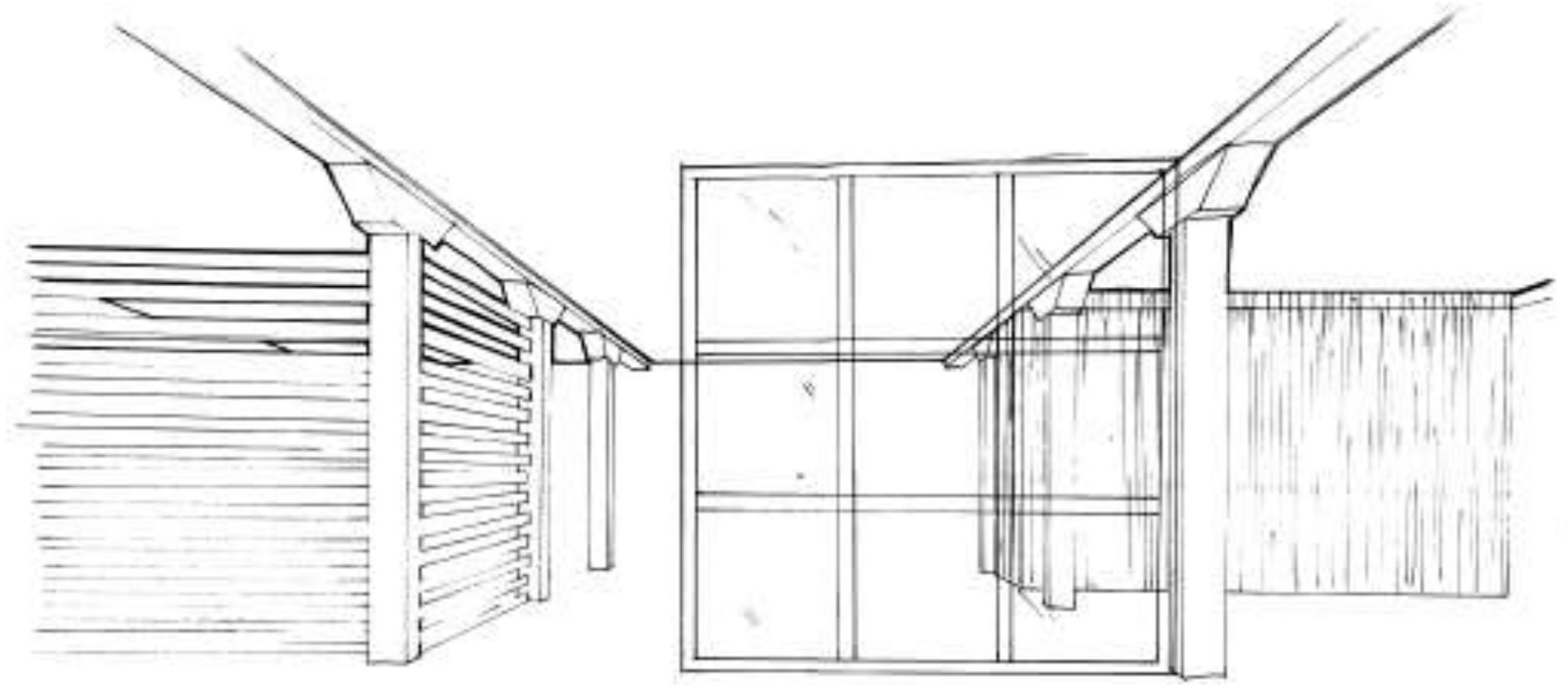
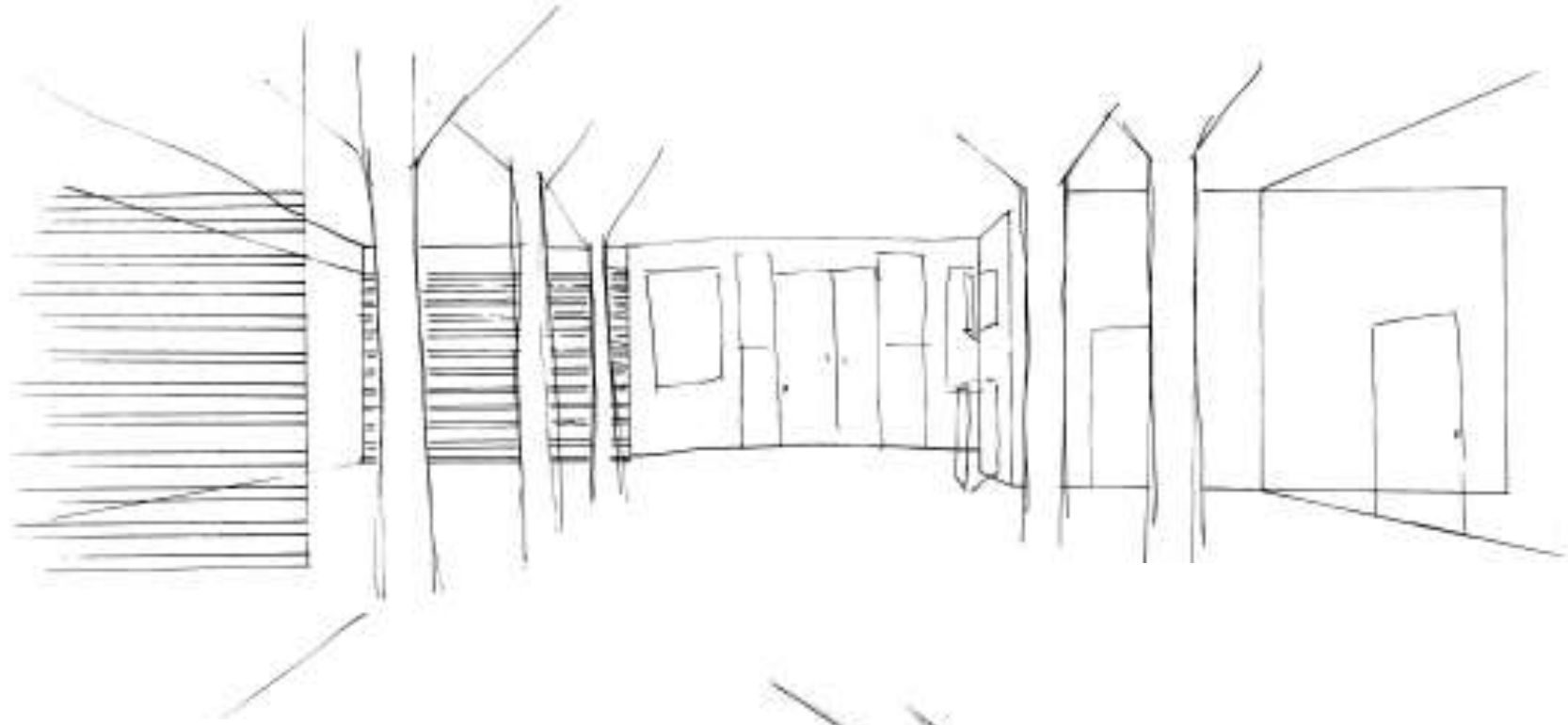




# Autocad Space Plan Sketches (3 Down)



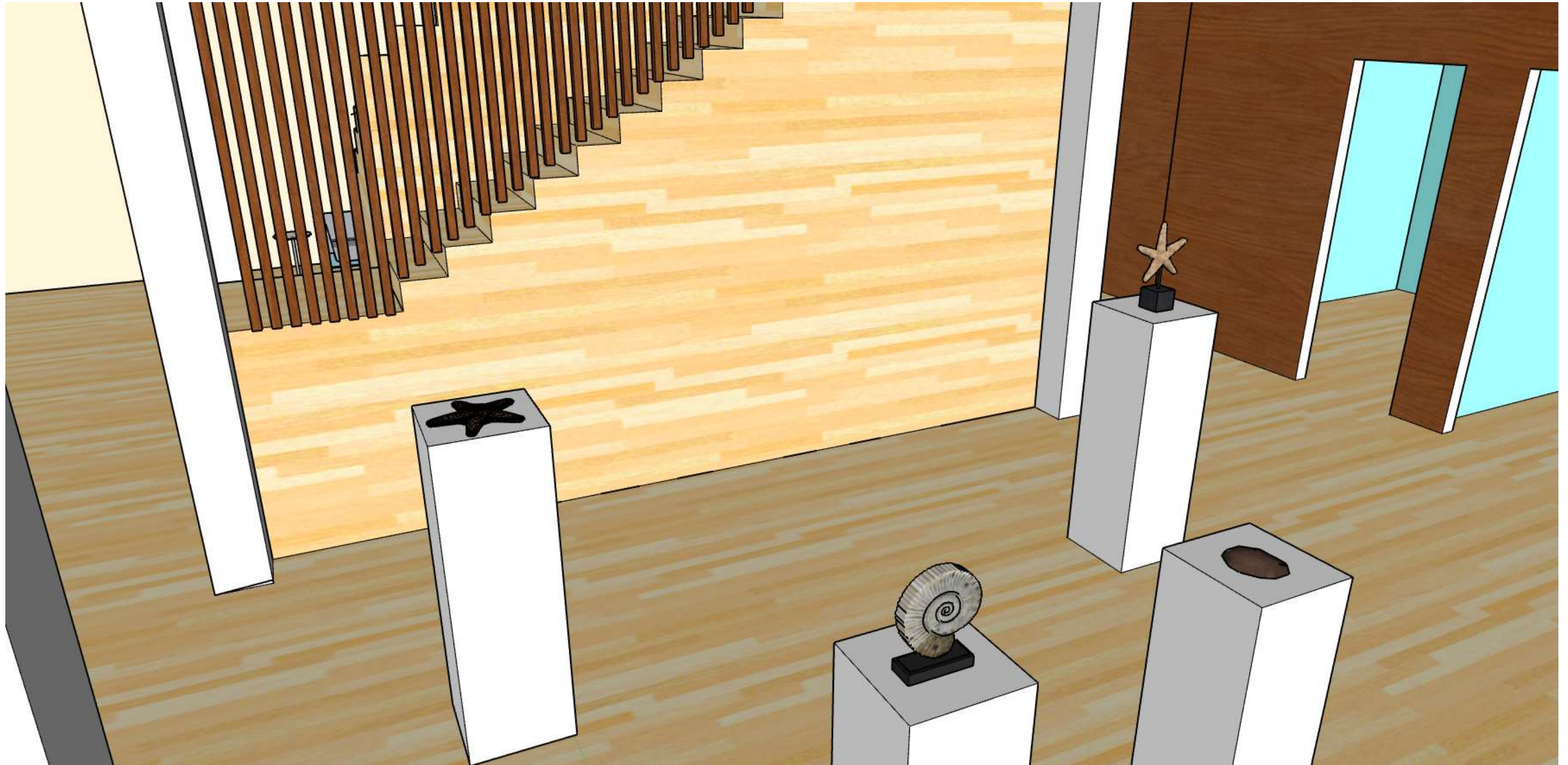
# Sketches



# Sketch Up: Reception Area



# Sketch Up: Exhibition Space



# Sketch Up: Pantry Space



# Sketch Up: Upstairs Workroom



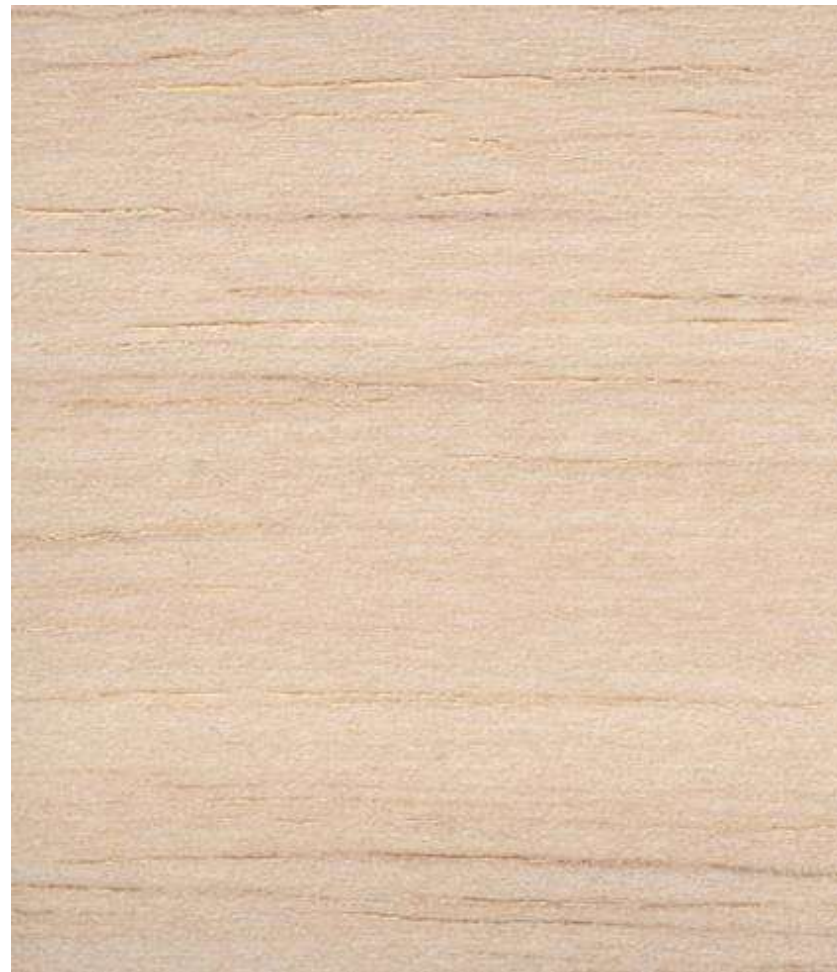
## Concept Statement and Inspiration Images

**My concept statement for the restoration of the Hughes Tobacco Warehouse is a space that encompasses all of the new and old aspects of the coastal south, along with function and formality. A captivating new design that keeps the eye busy through all turns.**



# Architectural Finishes

**Light Balsa Wood**



**Cherry Wood**

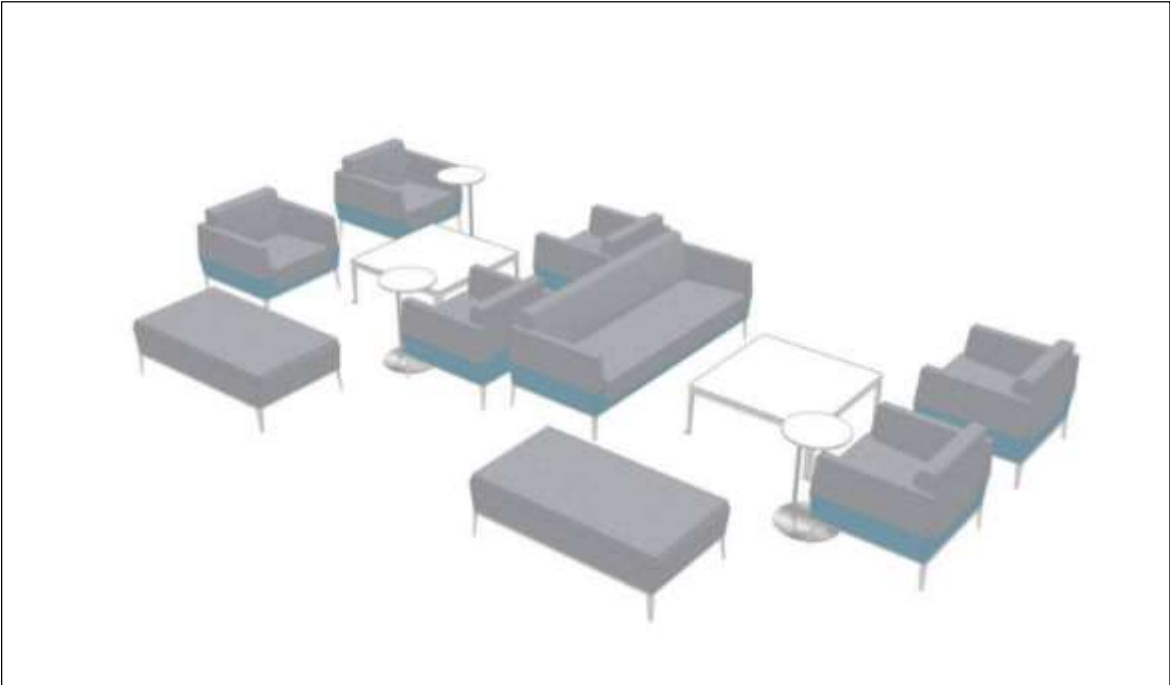


**Dark Cherry Wood**





# Furniture



**Lounge and Reception Furniture**

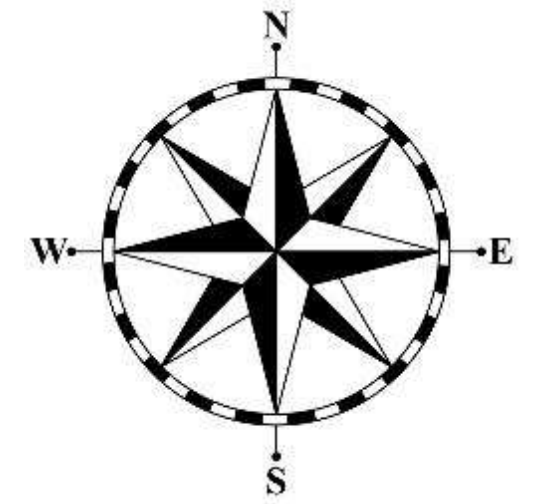
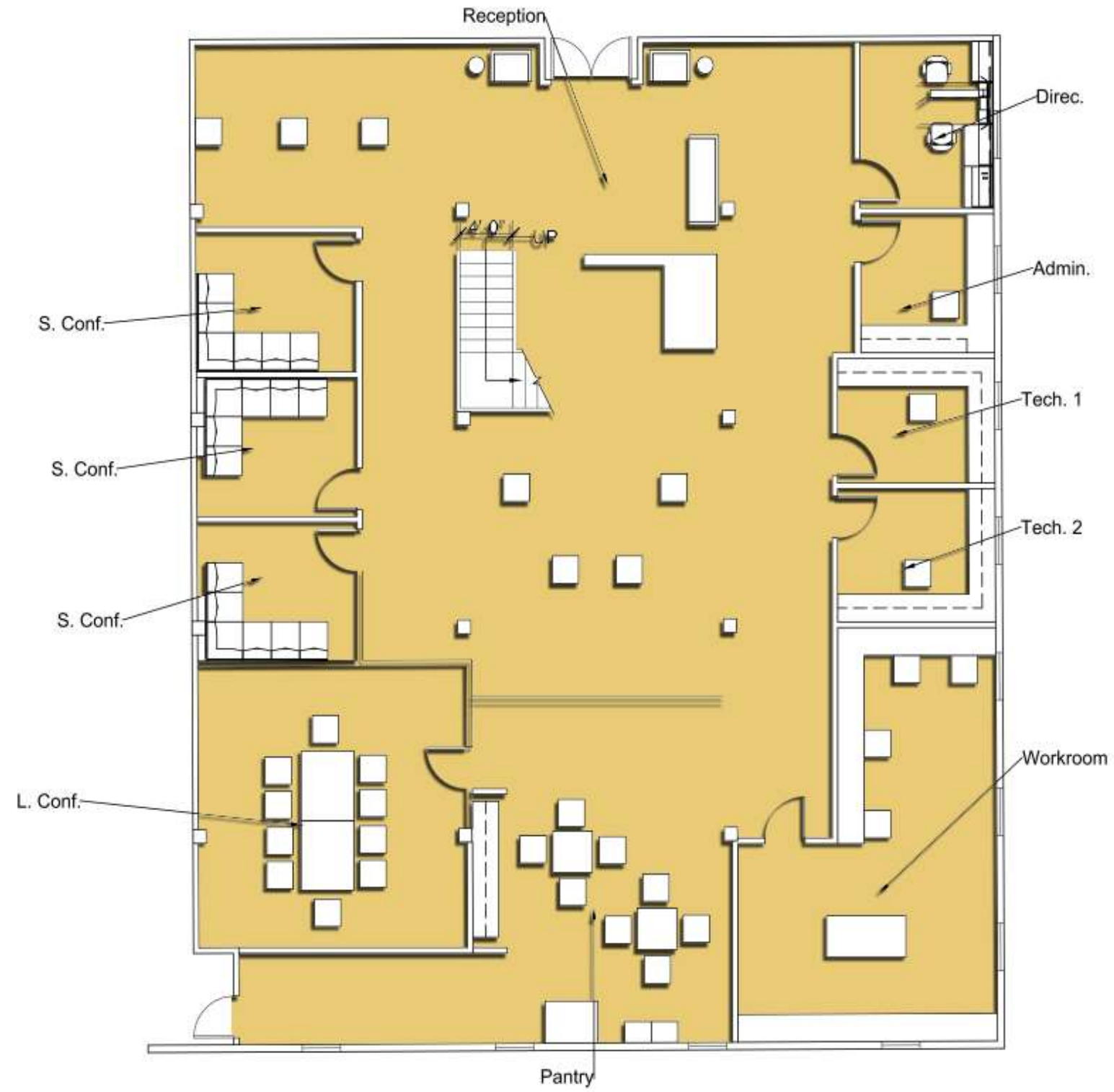


**Workstations**



**Pantry Seating**

# Final Autocad Drawings: Downstairs



# Final Autocad Drawings: Upstairs

