

PORTFOLIO TWO

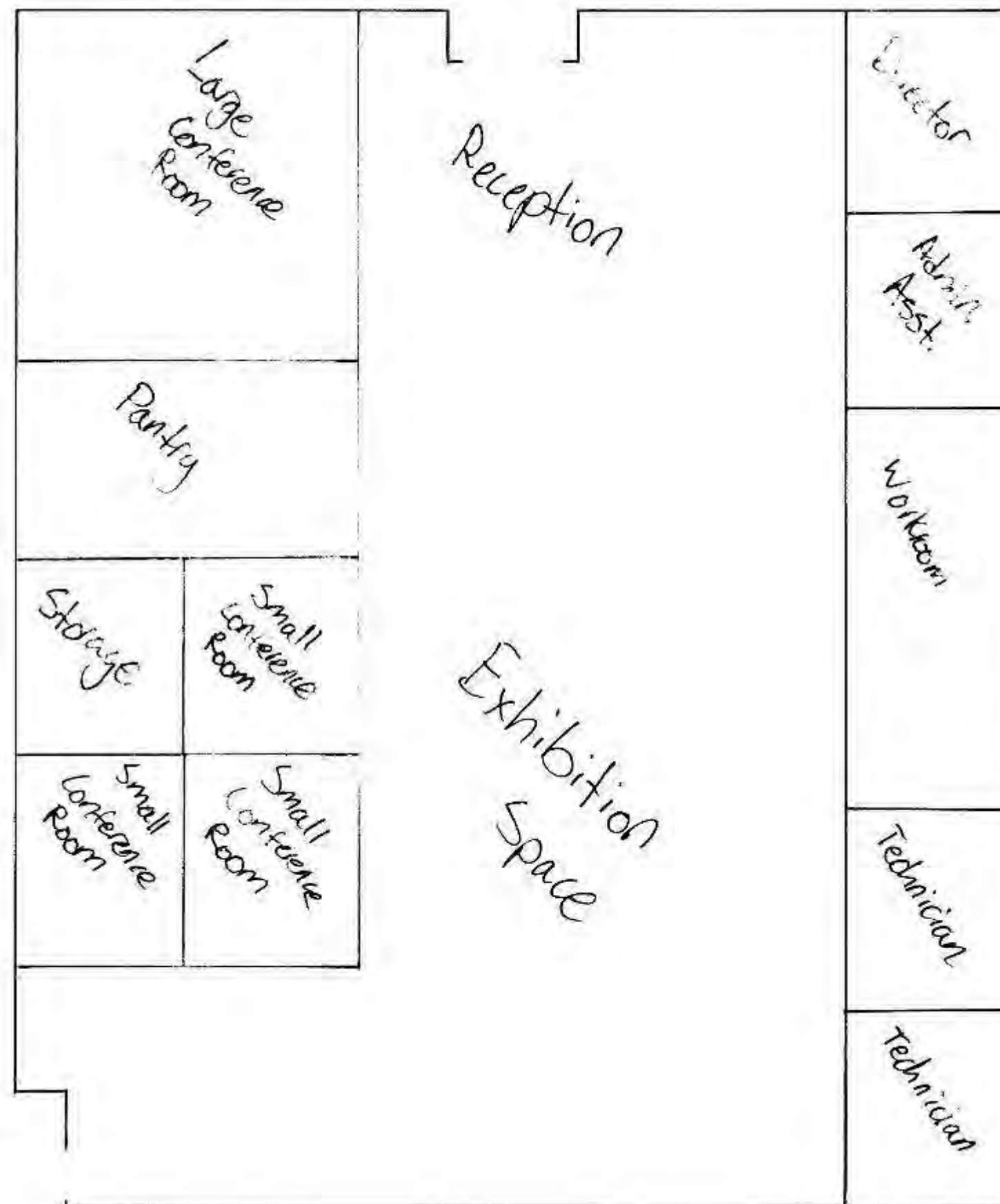
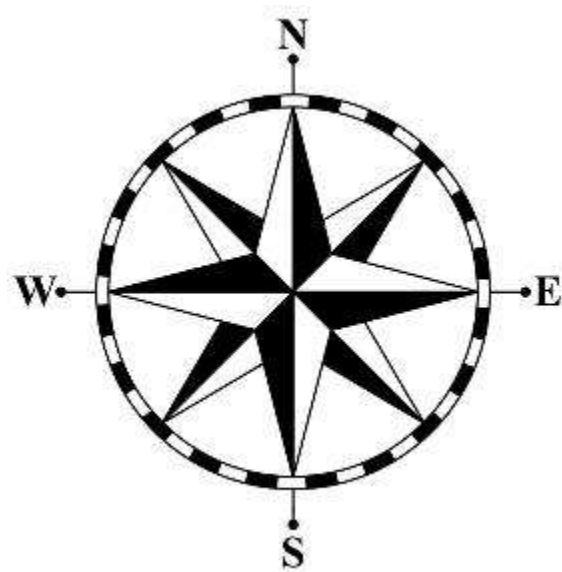
Brenden Fout

Charles Gustina IDSN 2102 Fall 2017

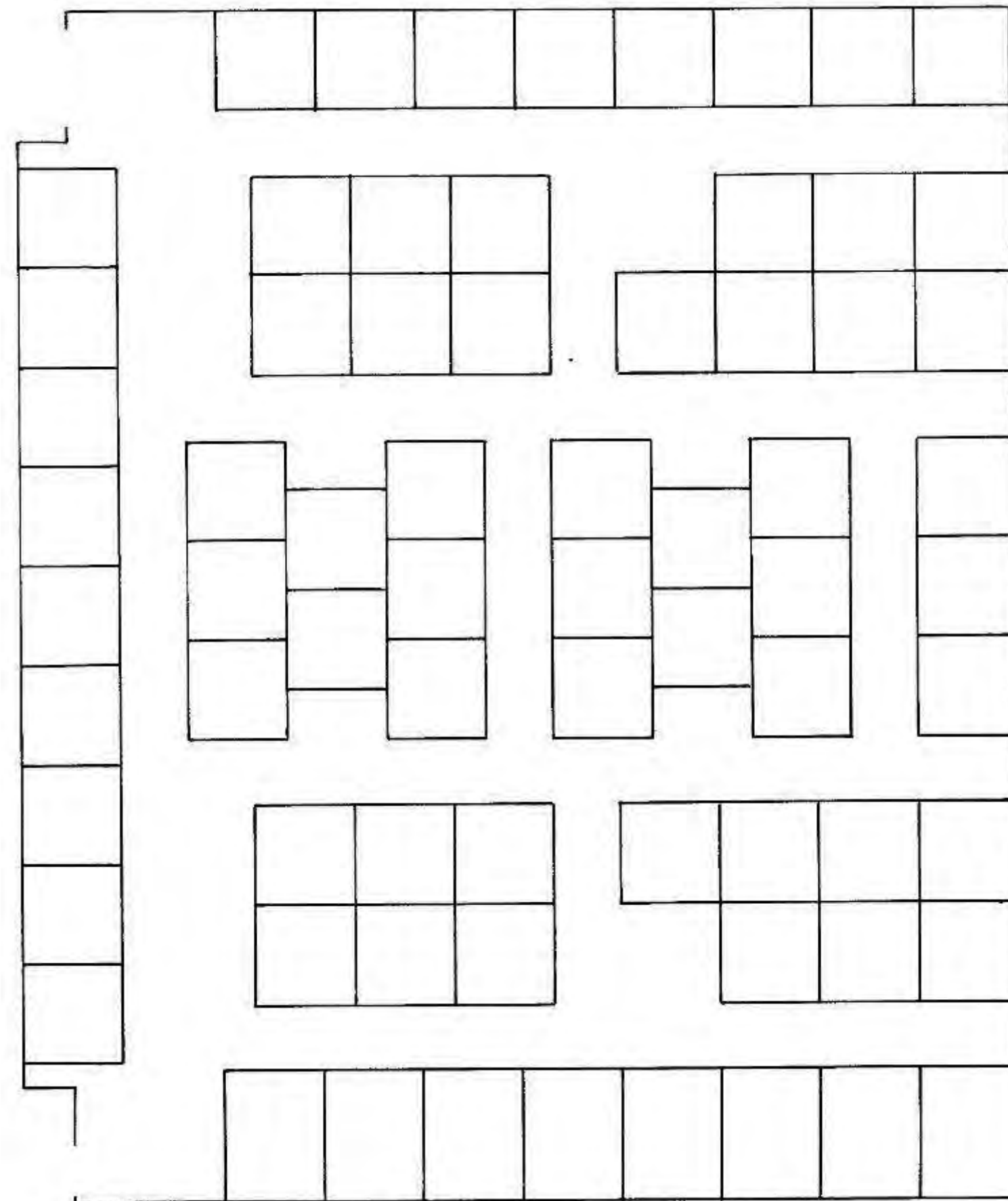
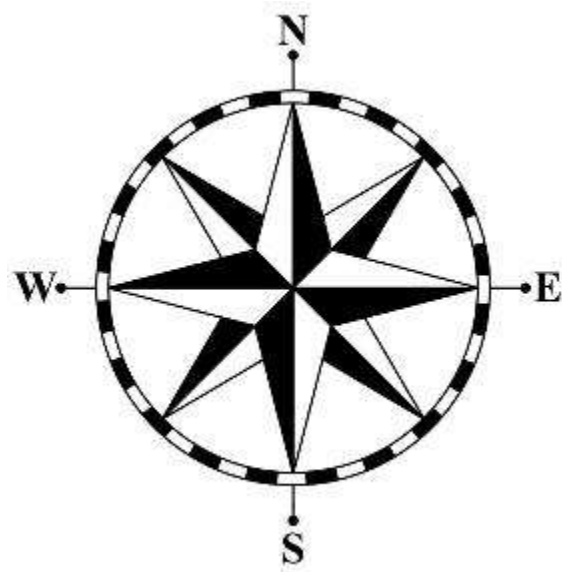
Table of Contents

| | |
|-------|---|
| 2-3 | 1 st Space Plan Drawings |
| 4-5 | 2 nd Space Plan Drawing |
| 6-7 | 3 rd Space Plan Drawing |
| 8-9 | 4 th Space Plan Drawing |
| 10-11 | Sketch Perspectives |
| 12-13 | Sketchup Reception Scenes |
| 14-15 | Sketchup Pantry Scenes |
| 16 | Sketchup Exhibition Scene |
| 17-18 | Sketchup Open Area Scenes |
| 19 | Concept Statement |
| 20 | Inspiration Images |
| 21 | 1 st Floor Architectural Finishes |
| 22 | 2 nd Floor and Pantry Architectural Finishes |
| 23 | 1 st Floor Final Plan |
| 24 | 2 nd Floor Final Plan |

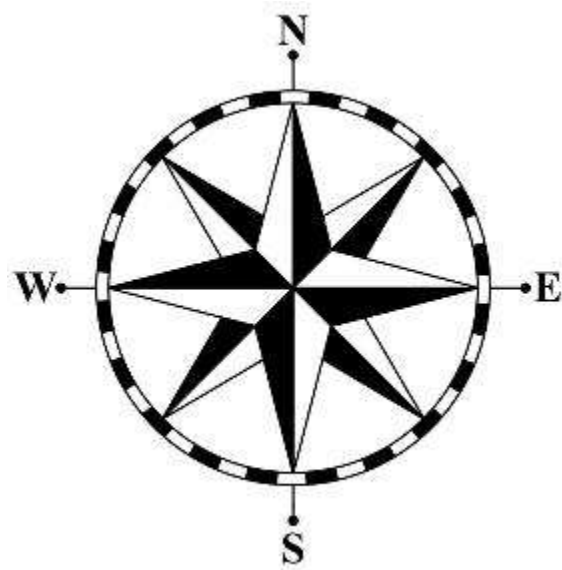
1st Floor
Space Planning 1
Sketch



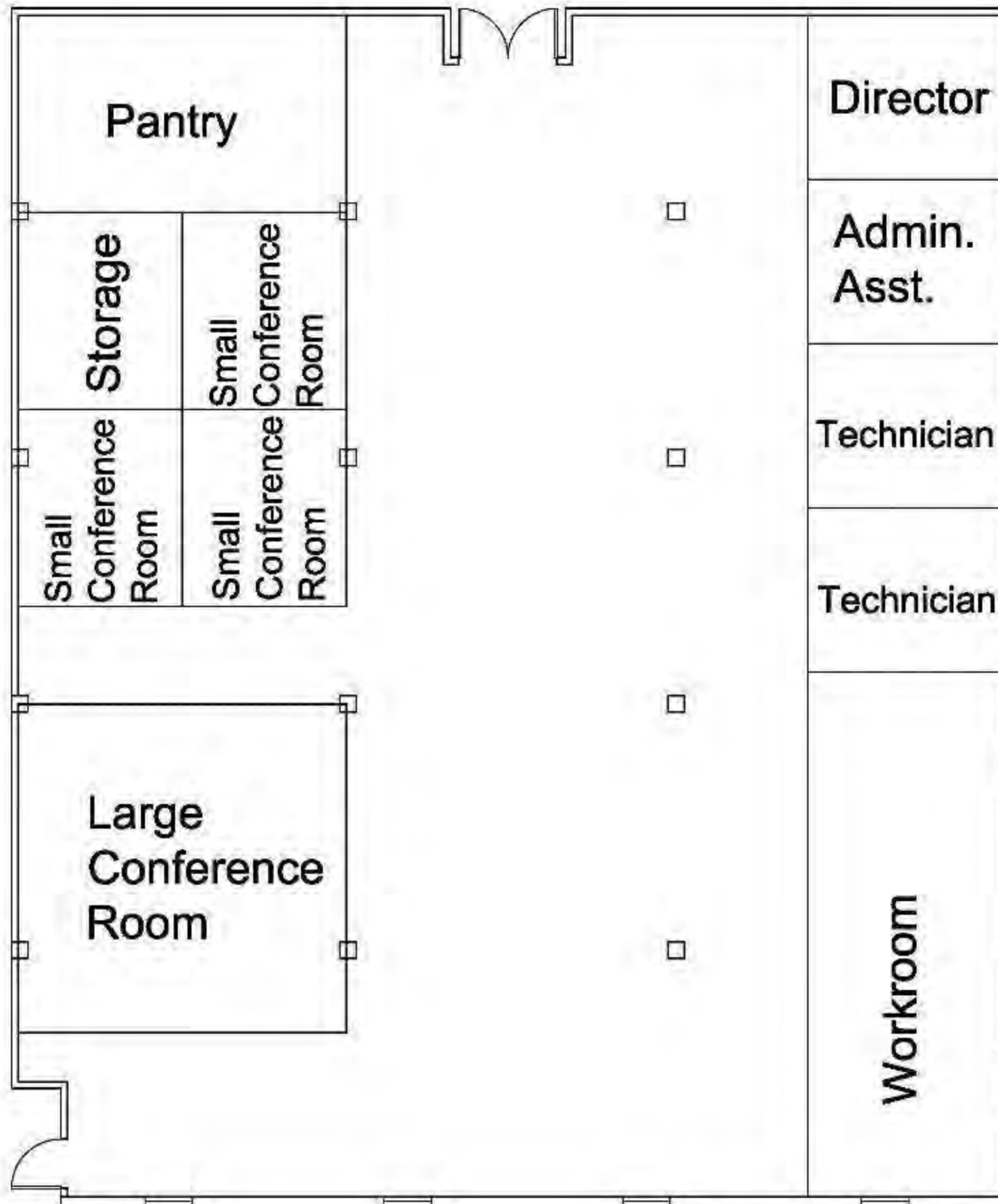
2nd Floor
Space Planning 1
Sketch



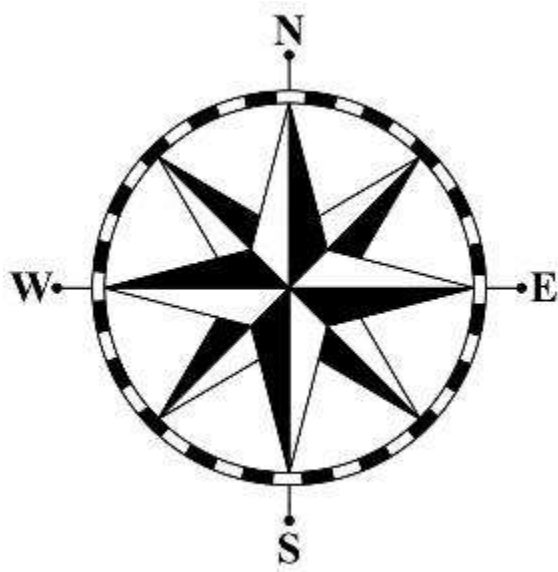
1st Floor
Space Planning 2
AutoCAD



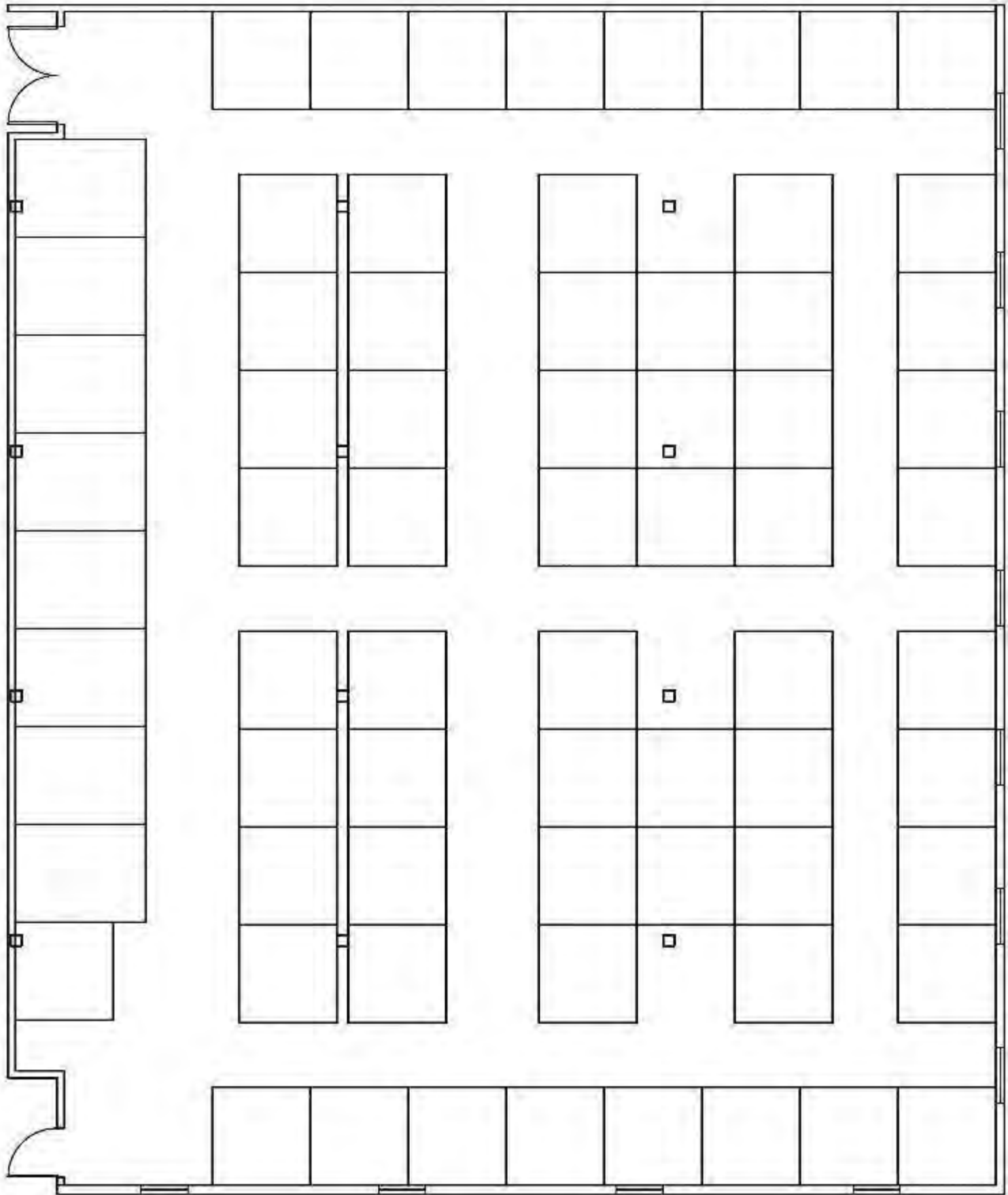
1/8" = 1'-0"



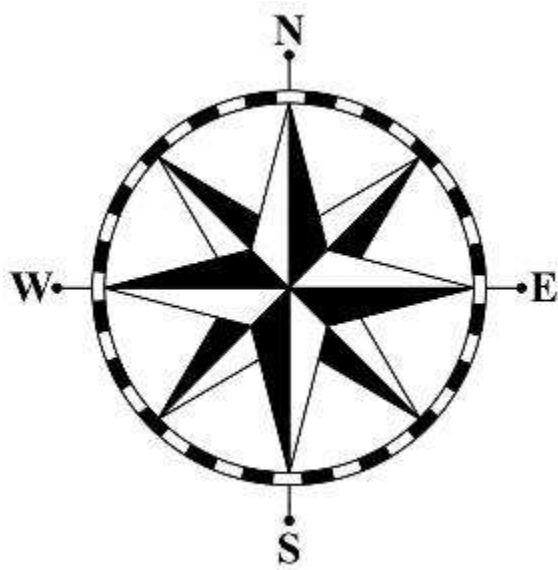
2nd Floor
Space Planning 2
AutoCAD



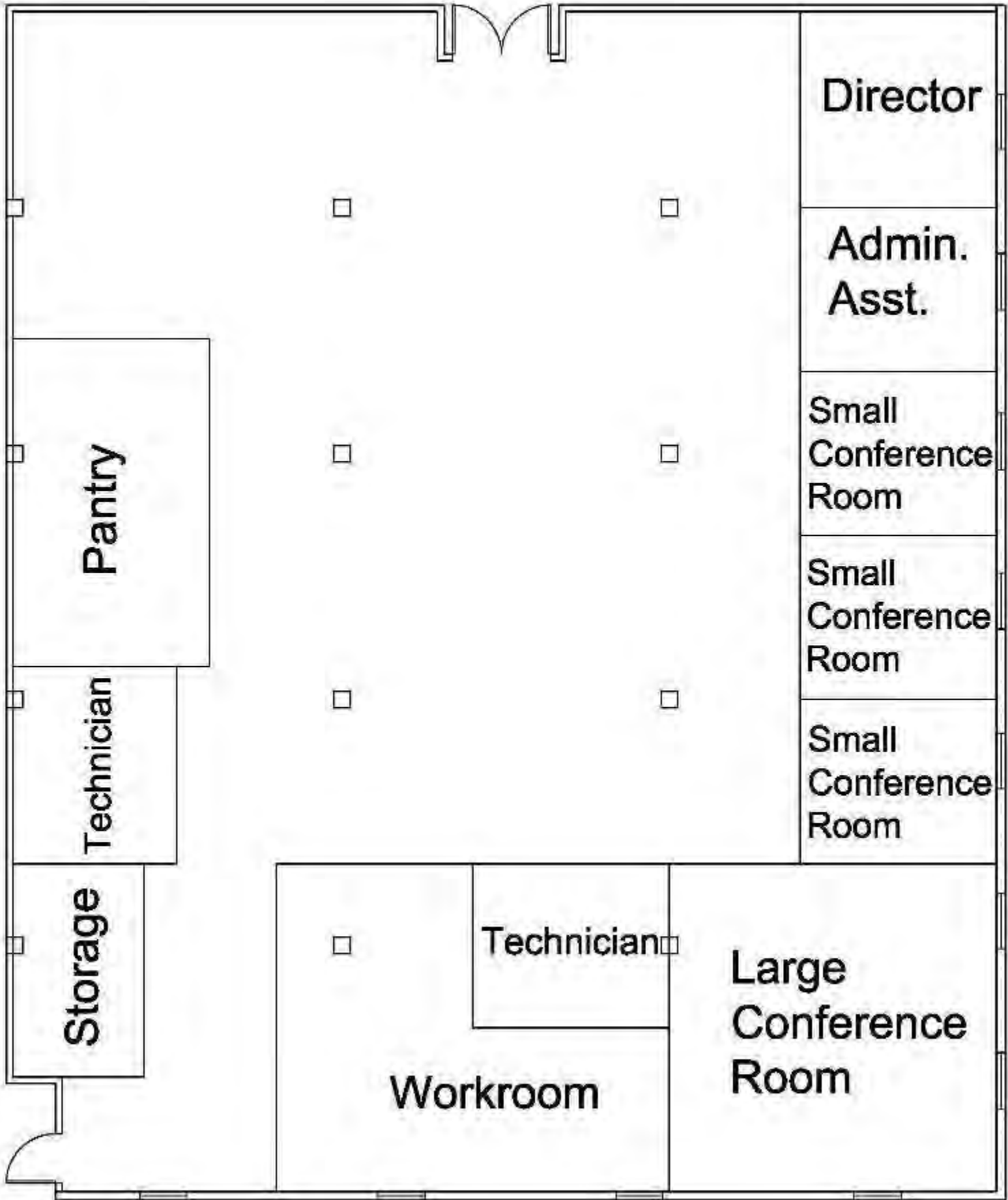
1/8" = 1'-0"



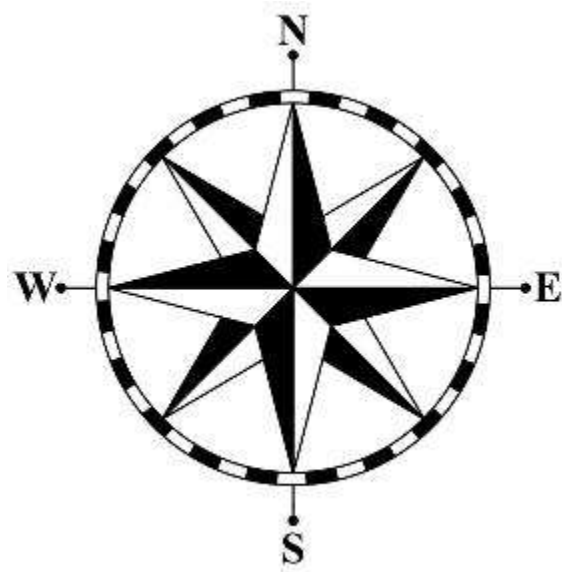
1st Floor
Space Planning 3
AutoCAD



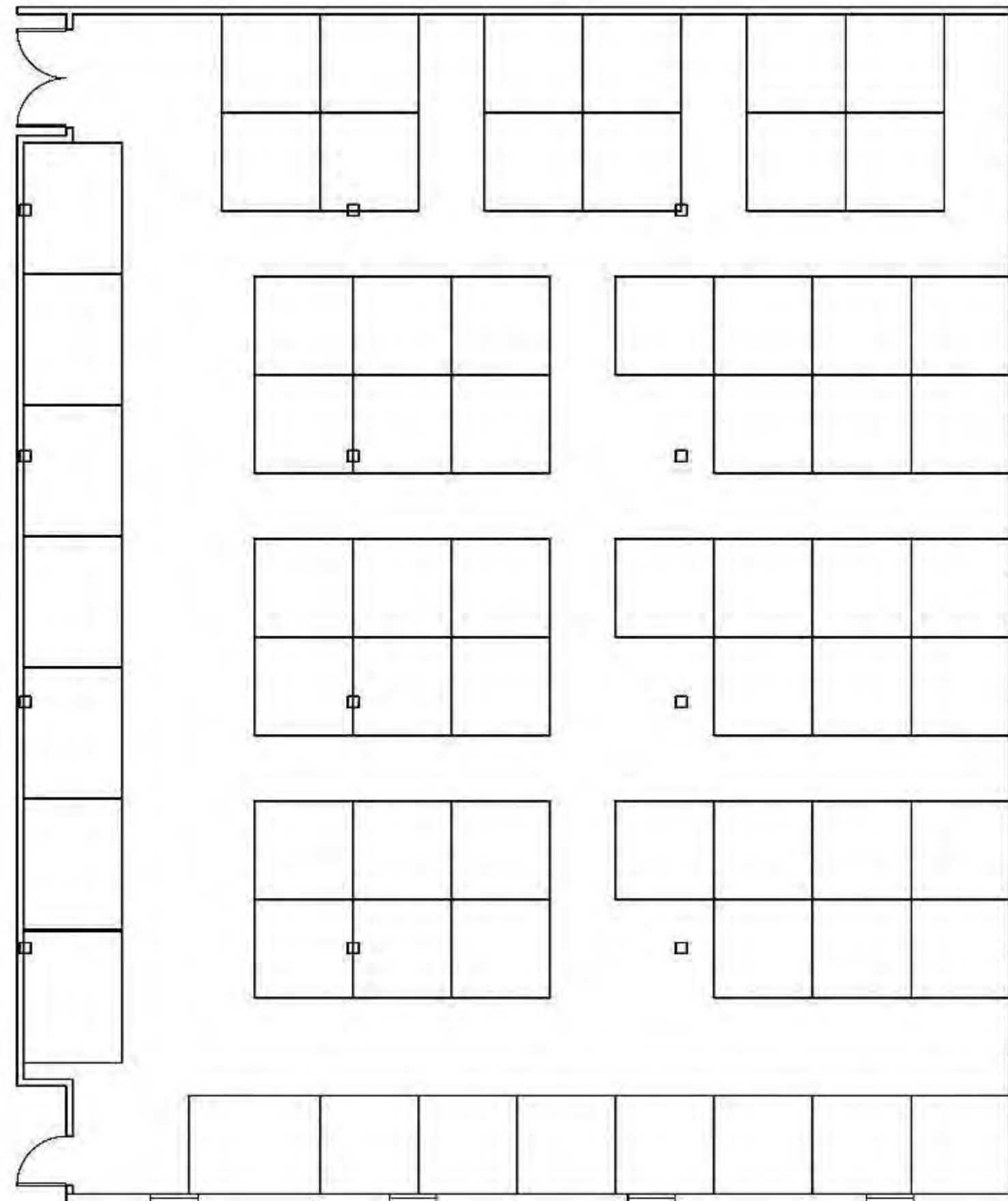
1/8" = 1'-0"



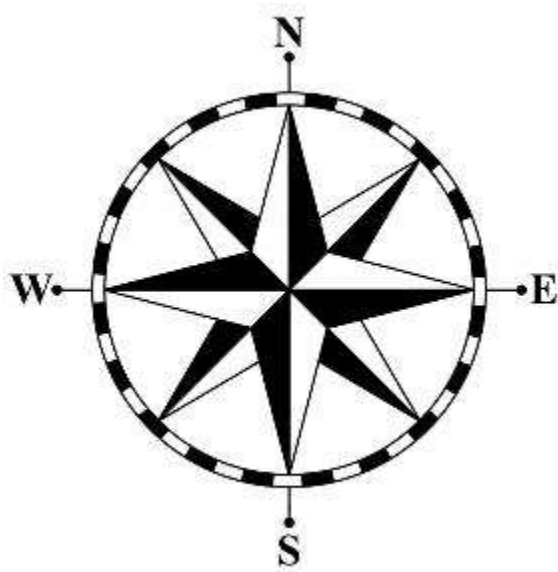
2nd Floor
Space Planning 3
AutoCAD



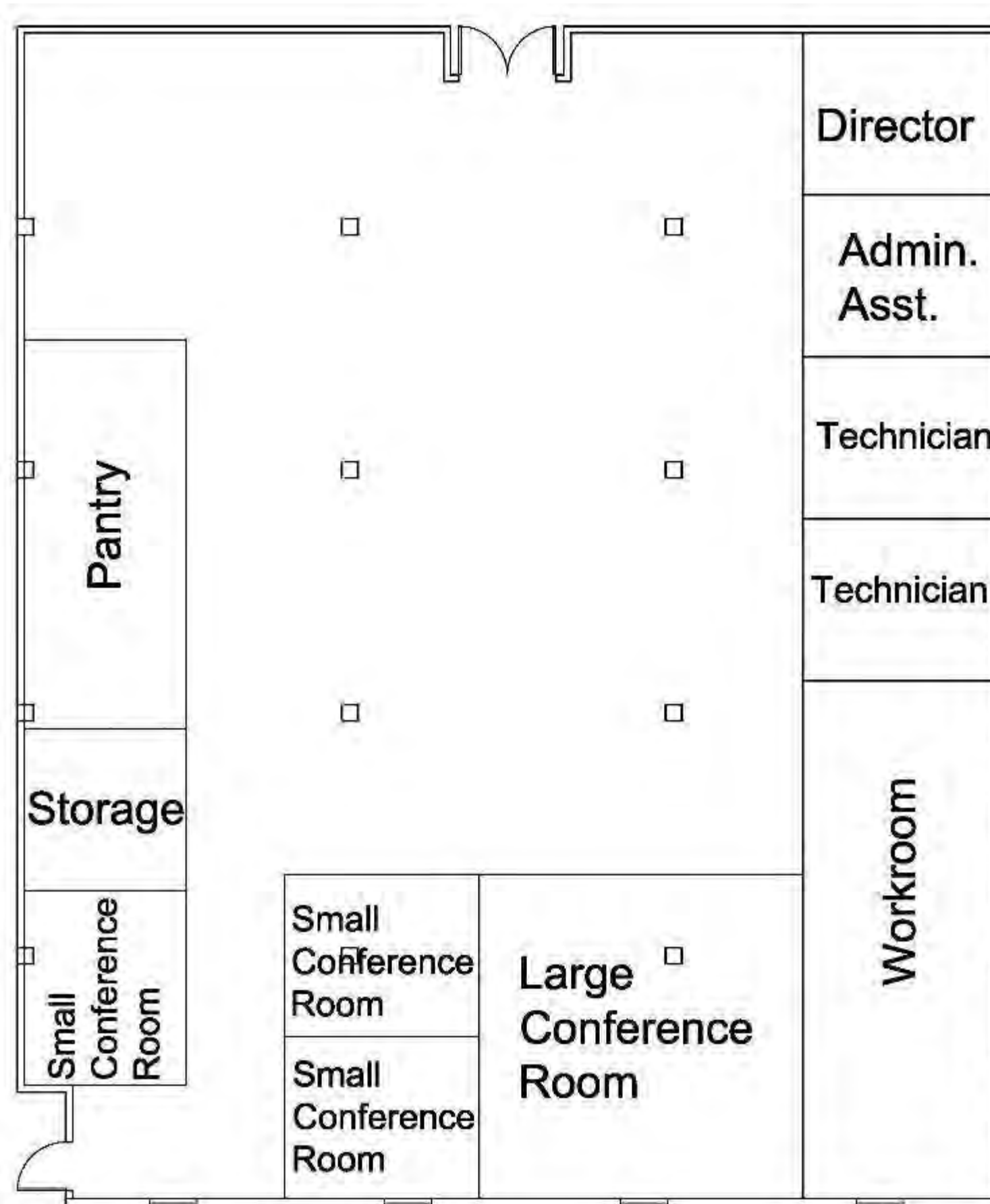
1/8" = 1'-0"



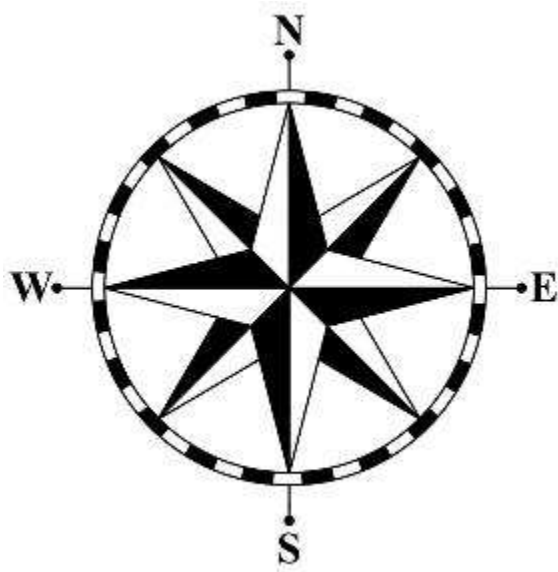
1st Floor
Space Planning 4
AutoCAD



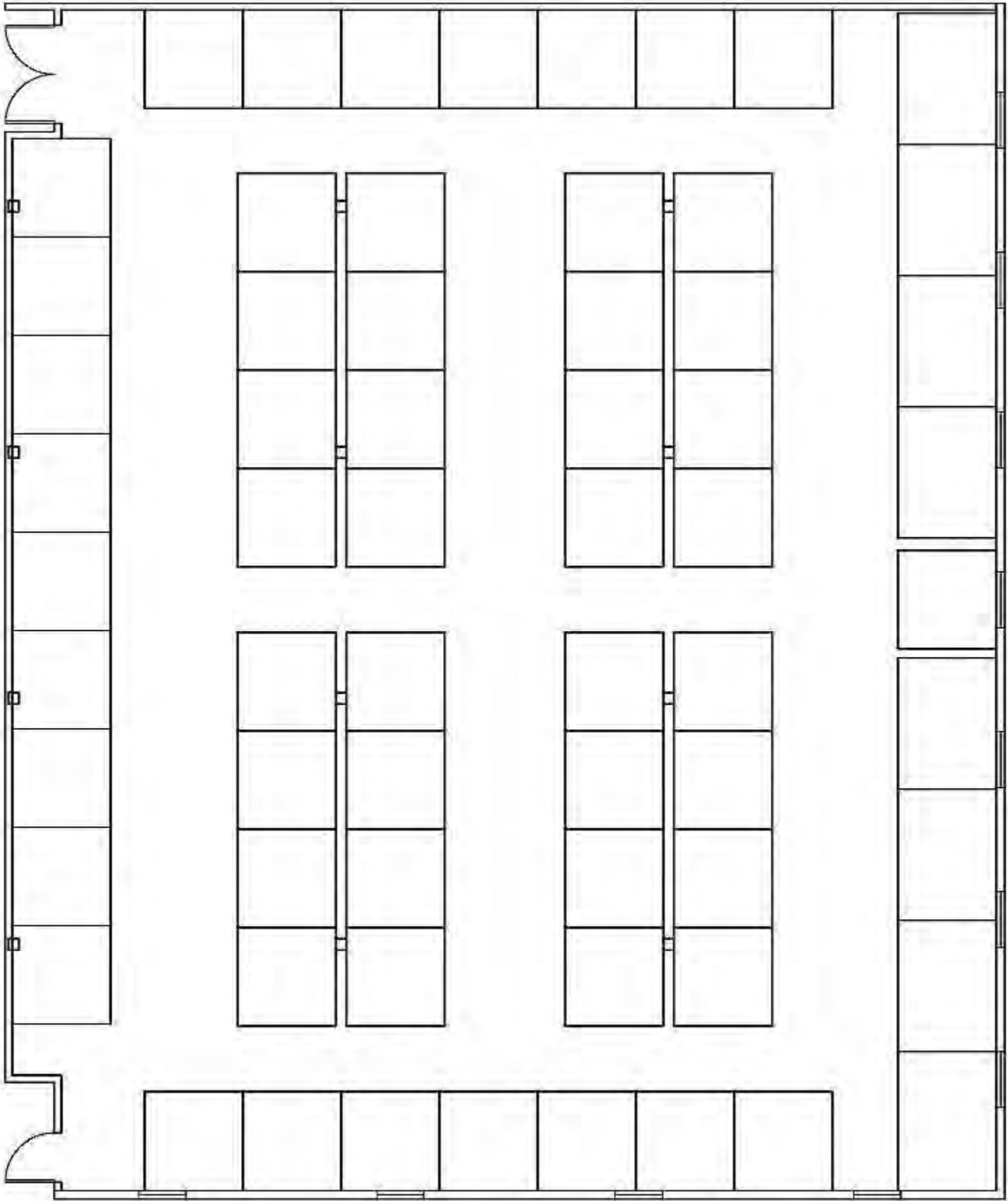
1/8" = 1'-0"



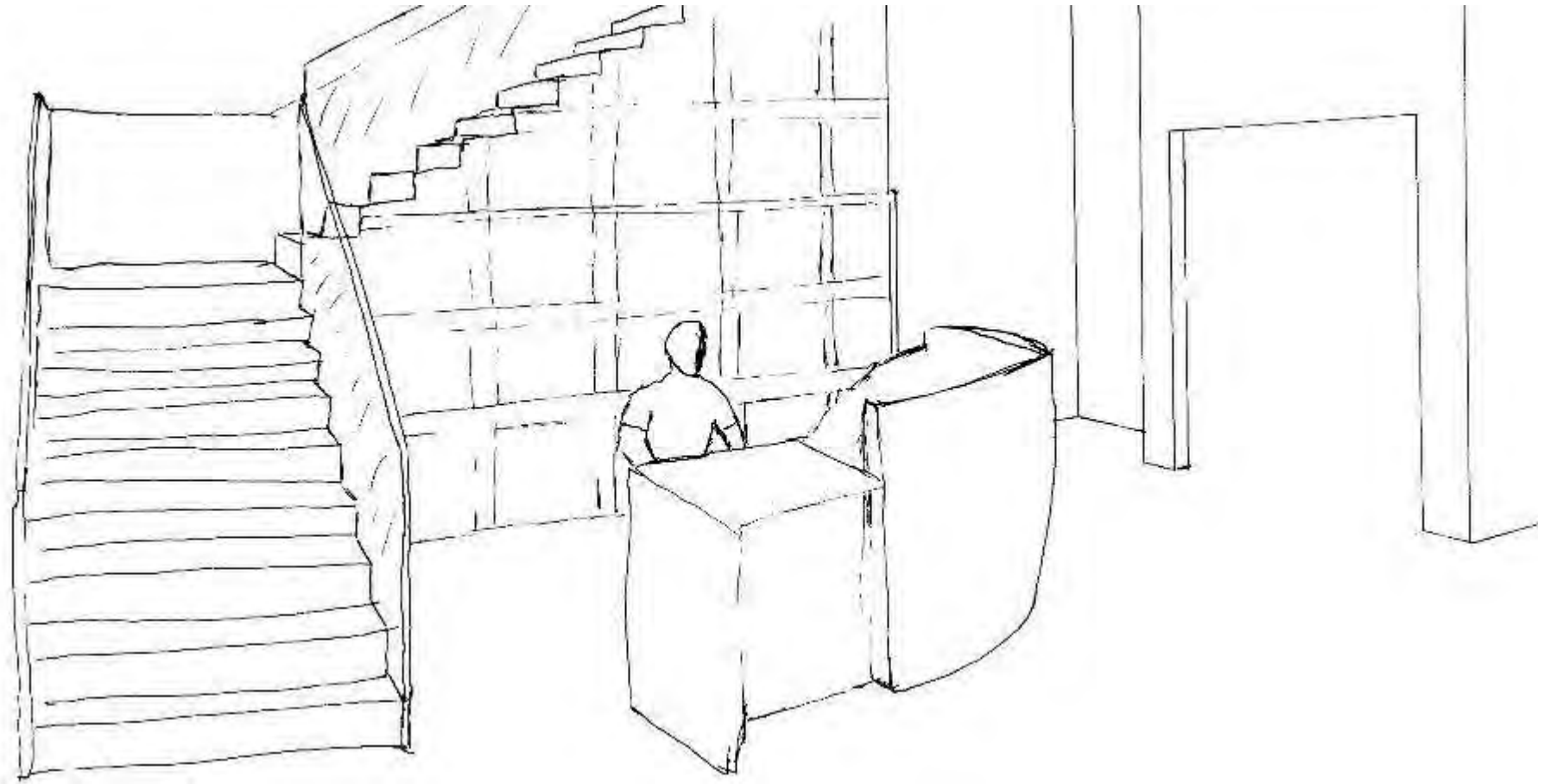
2nd Floor
Space Planning 4
AutoCAD



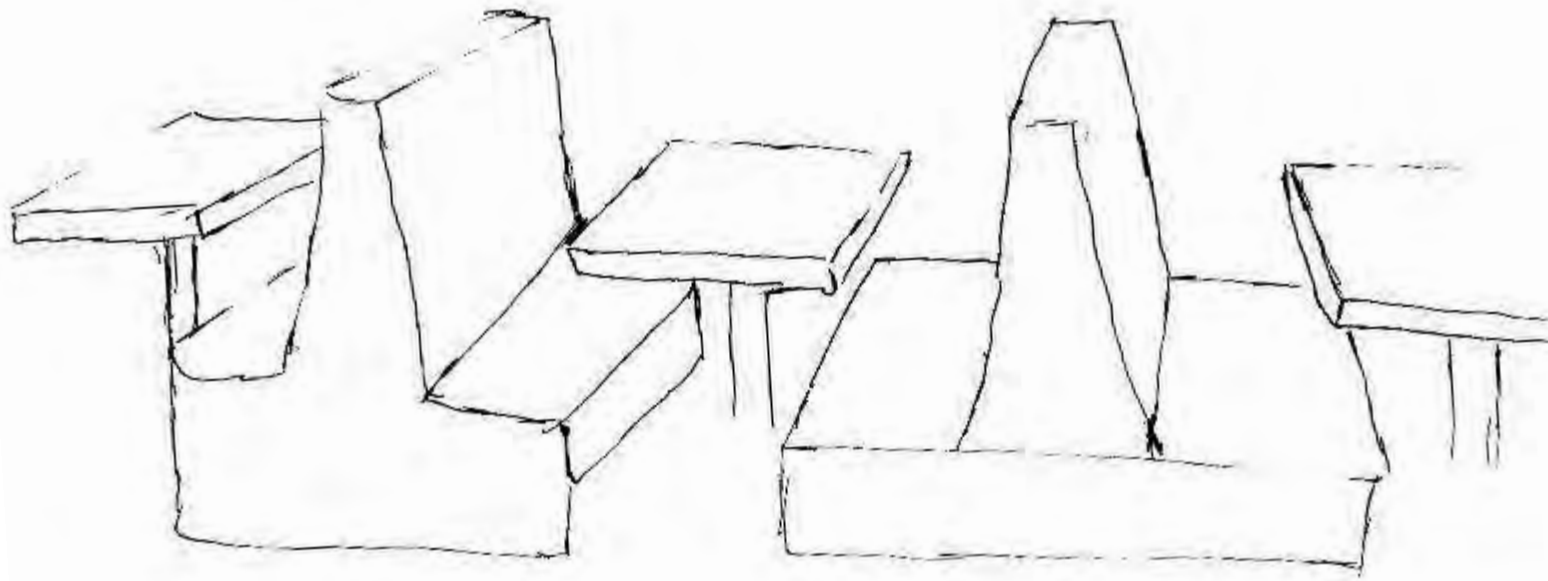
1/8" = 1'-0"



Sketch Perspectives

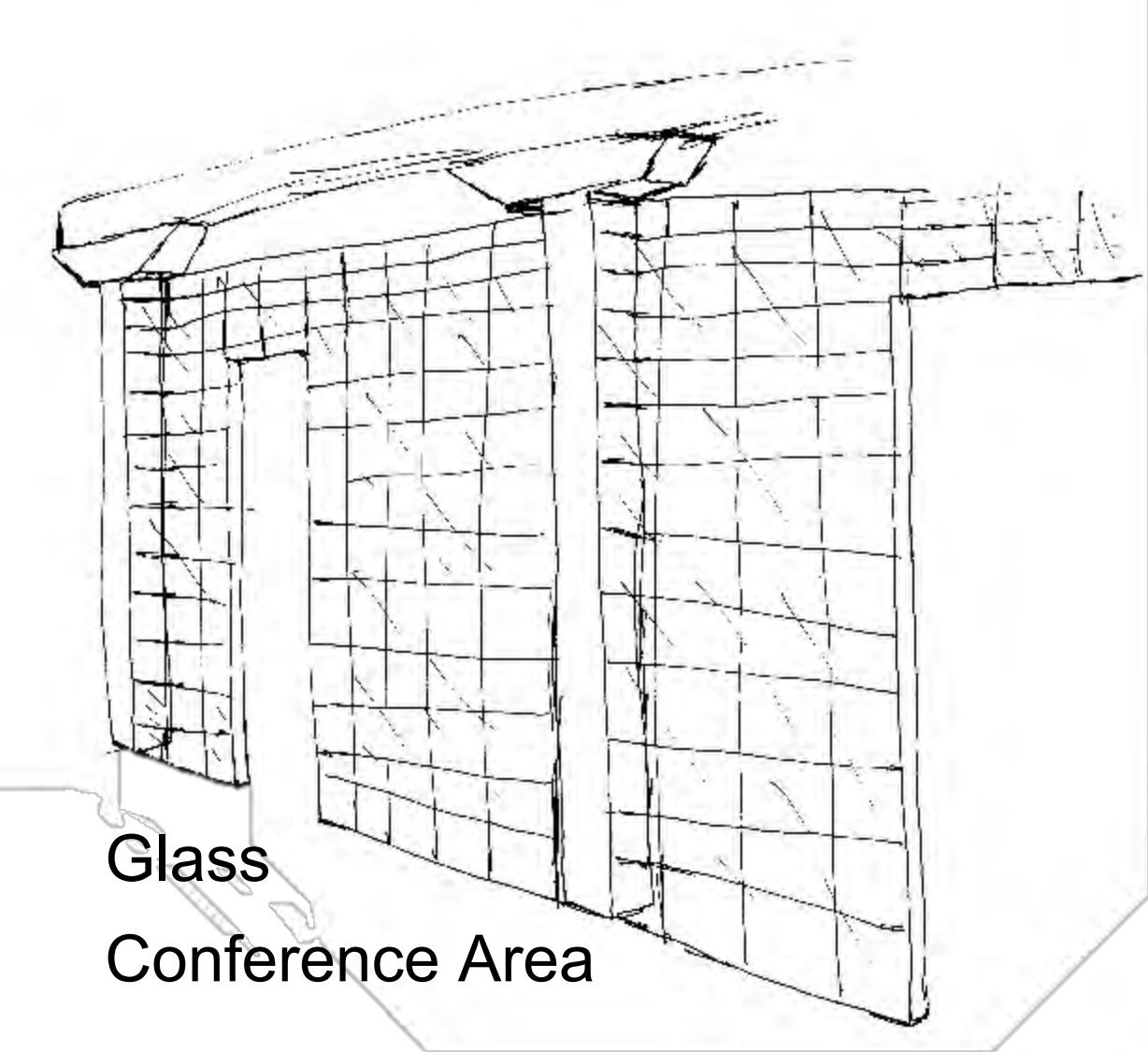


Reception Area

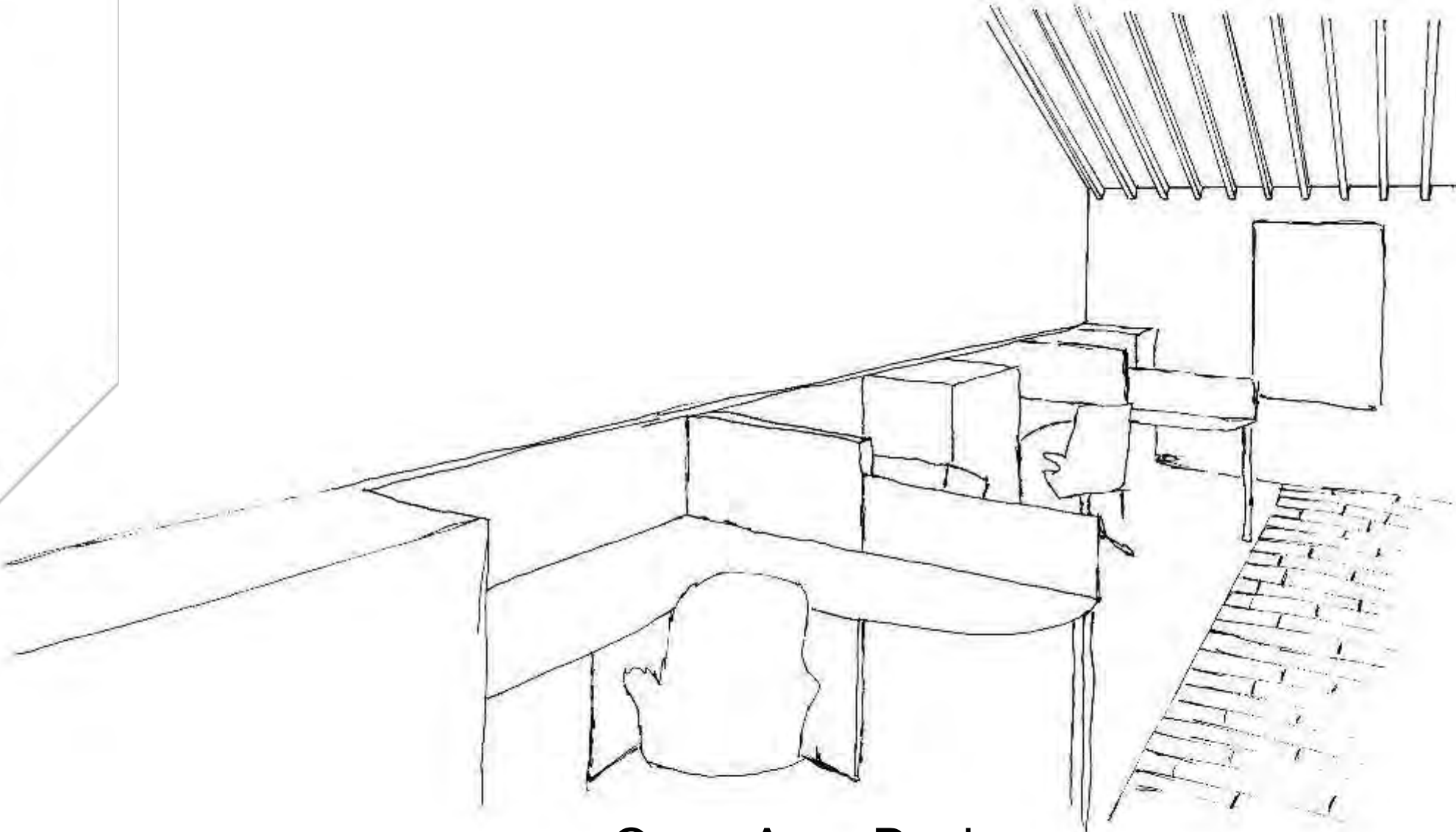


Booths

Sketch Perspectives Continued



Glass
Conference Area



Open Area Desks

Reception Scene 1



Reception Scene 2



Pantry Scene 1



Pantry Scene 2



Exhibition Scene 1



Open Area Scene 1

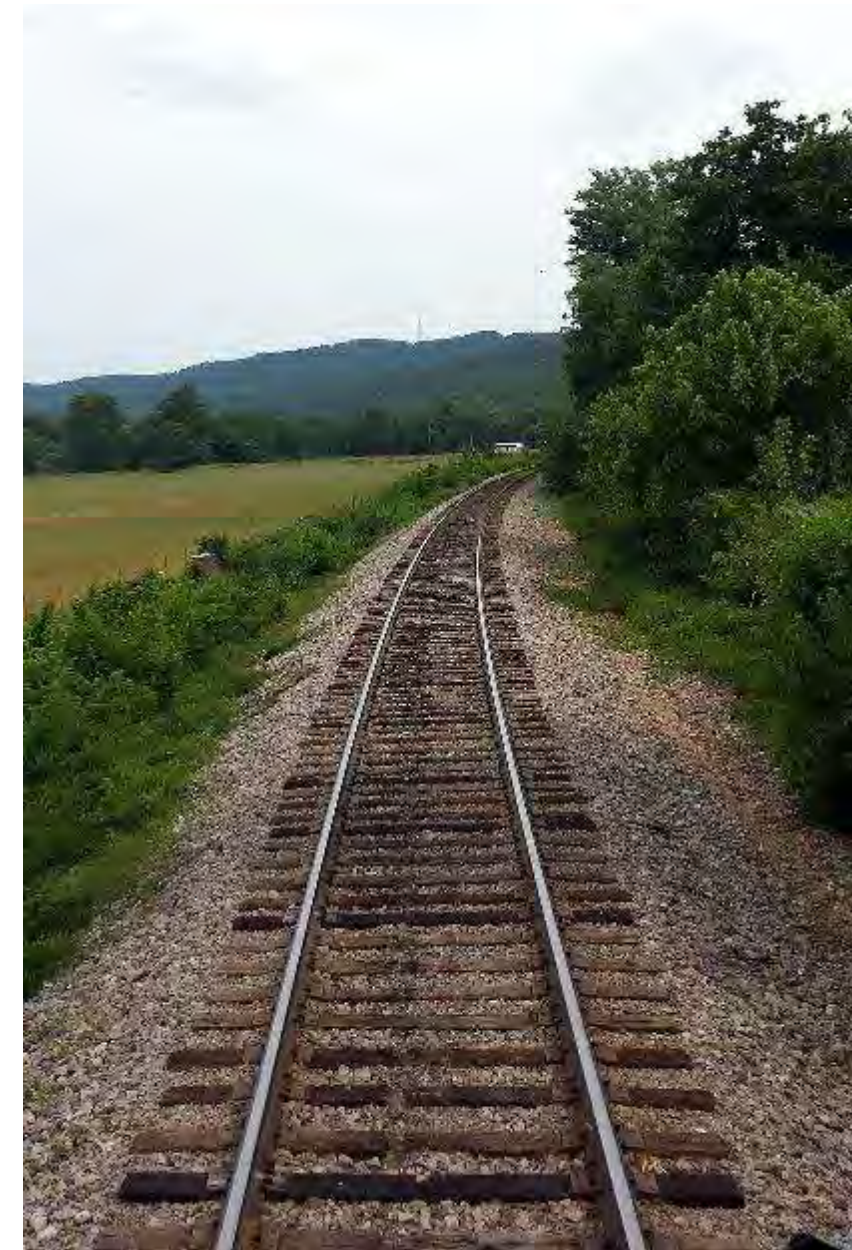
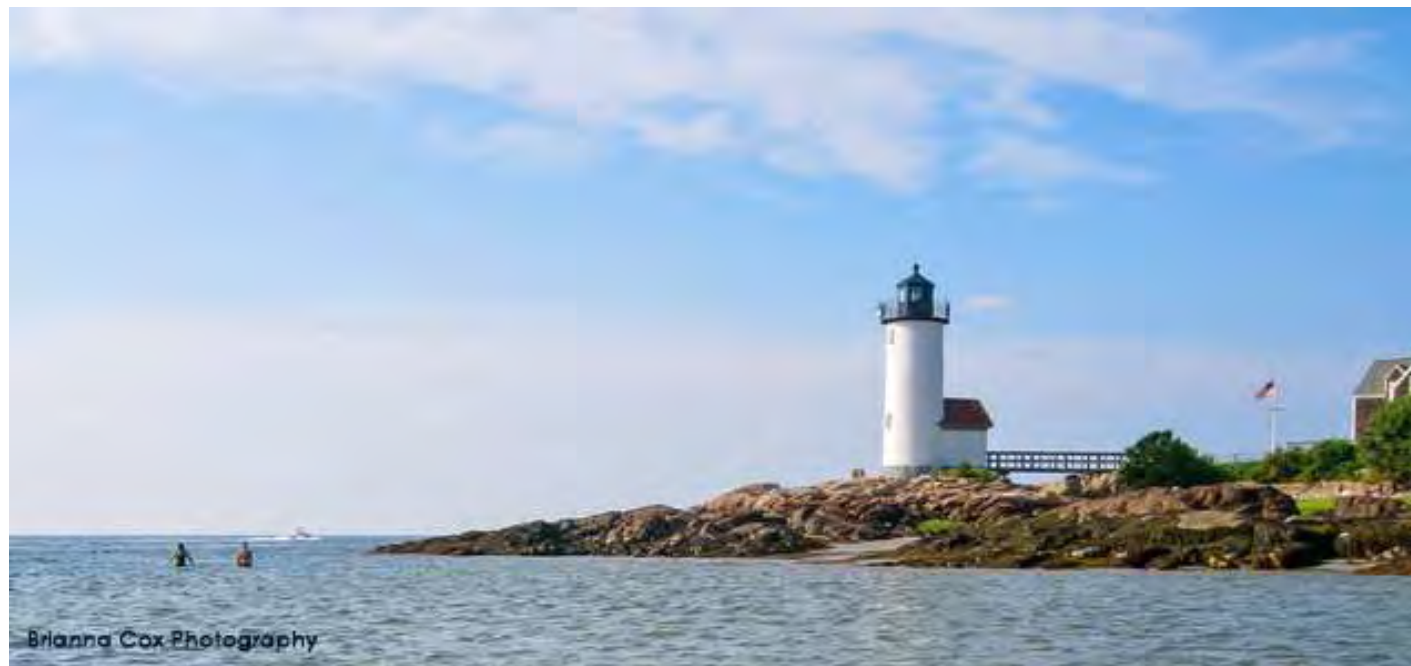


Open Area Scene 2



Concept Statement

- The Gateway Center encompasses the transportation of the coastal south.
- Modes of transportation include trains on railways and boats through harbors.
- Curvilinear lines are used throughout the space to symbolize the movement of the coast line.
- Materials used throughout the space including seamed metal, shiplap, and wooden planks come from these modes of transportation.



Inspiration Images



1st Floor Architectural Finishes

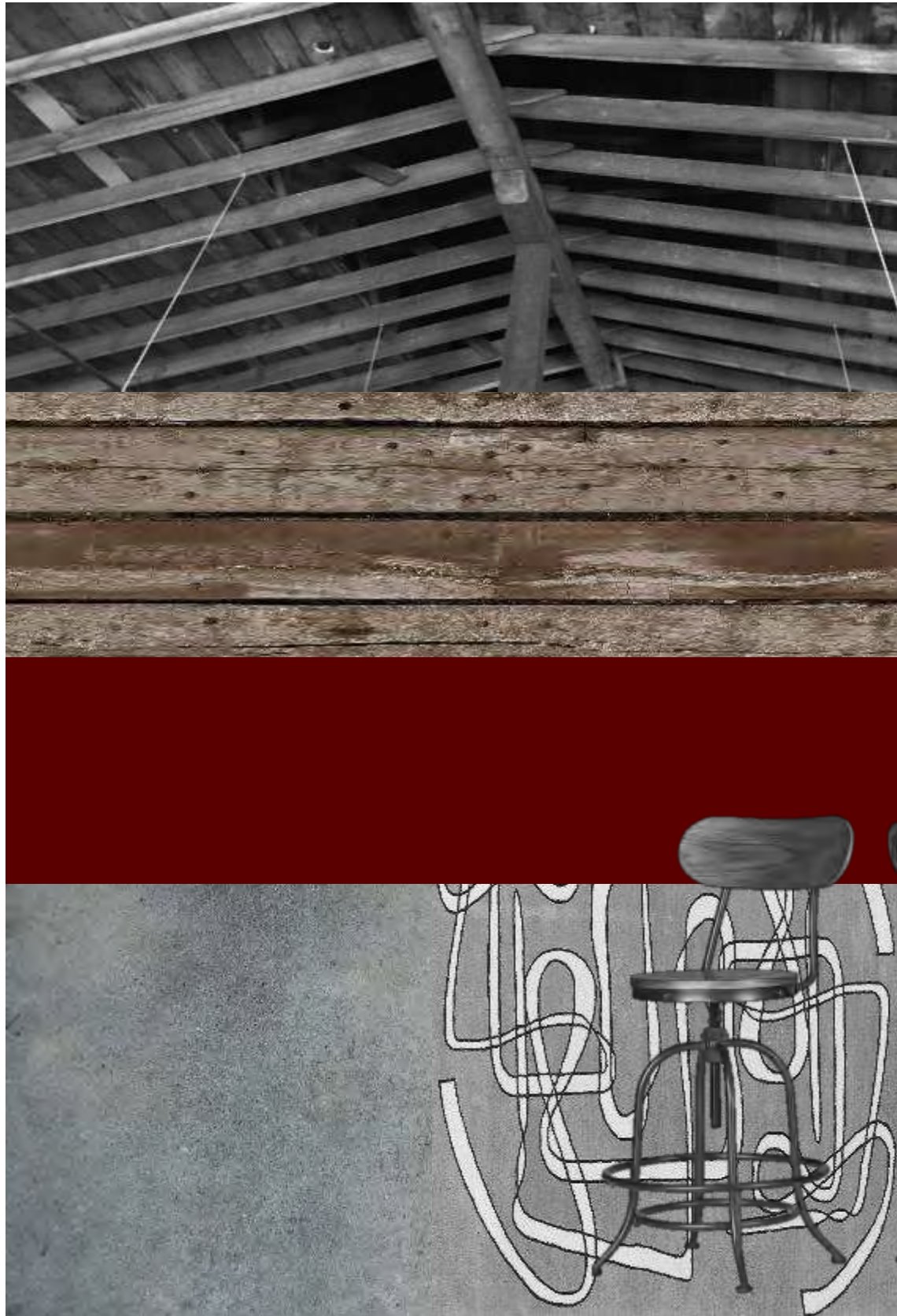


The flooring resembles old wooden railroad ties, while the walls show resemblance to shiplap used on lighthouses by the coast.

The furniture uses a mix of metal and wood elements to give an aesthetic. It has a bulky feel that represents the big locomotives and old ships.

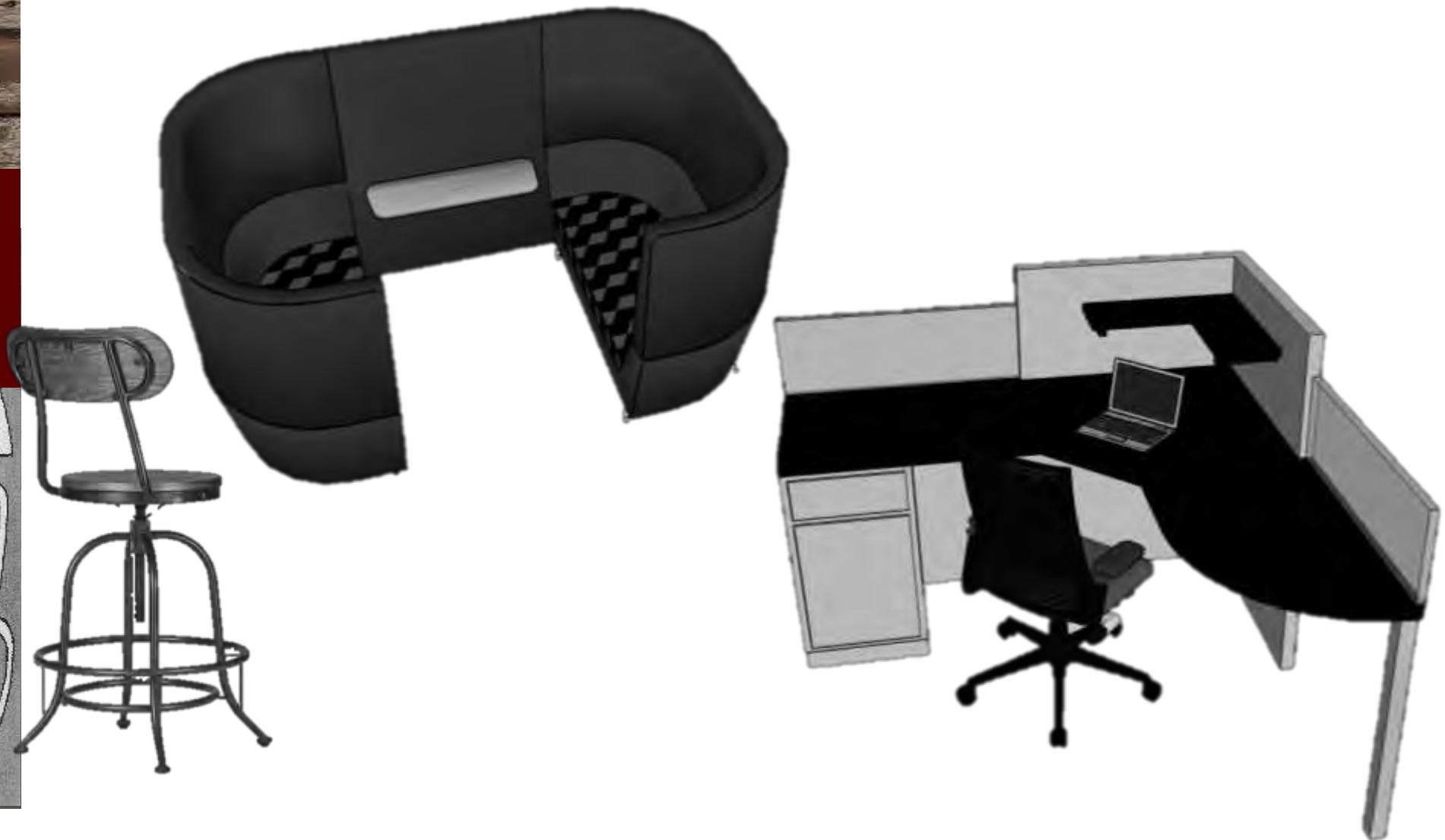


2nd Floor and Pantry Architectural Finishes

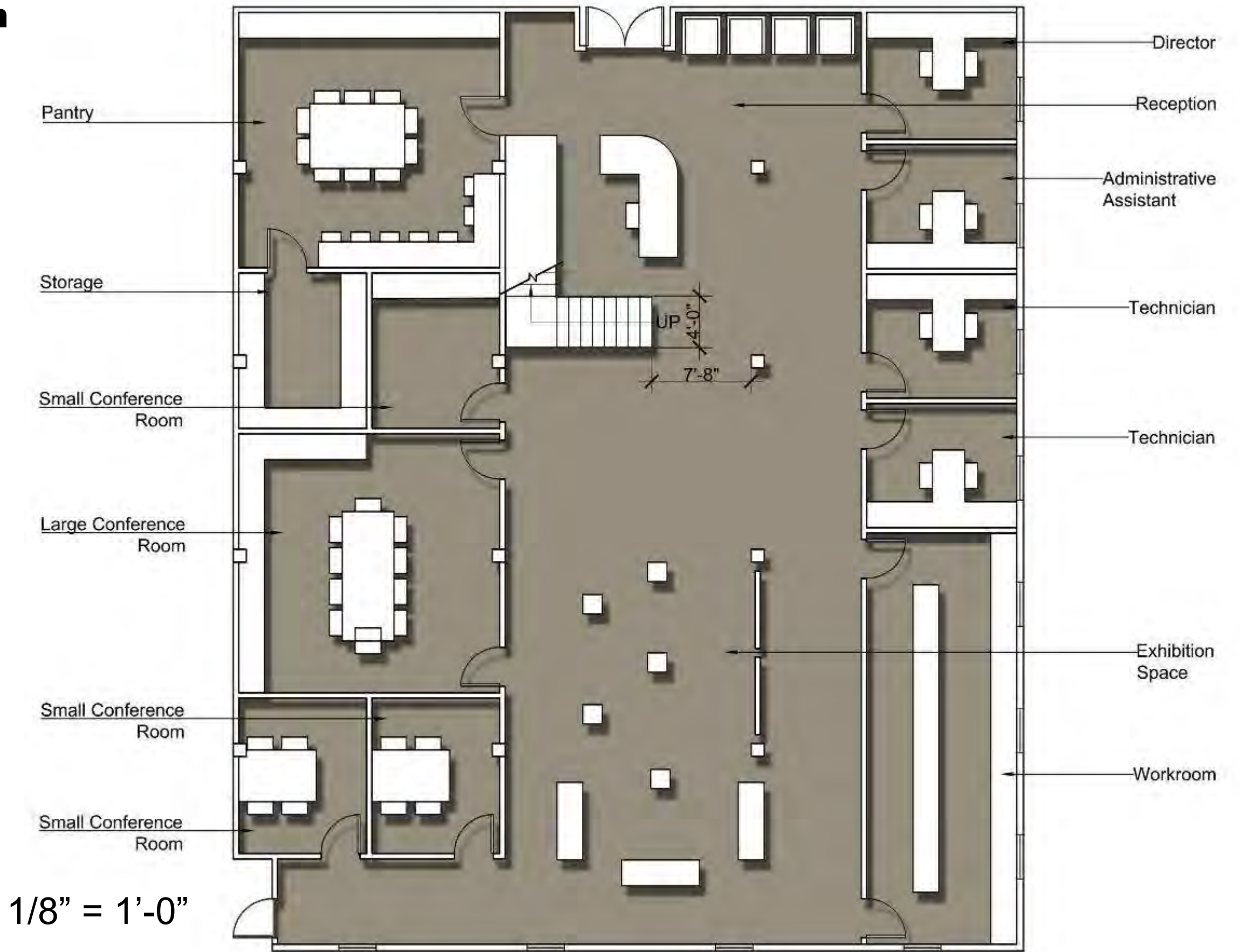
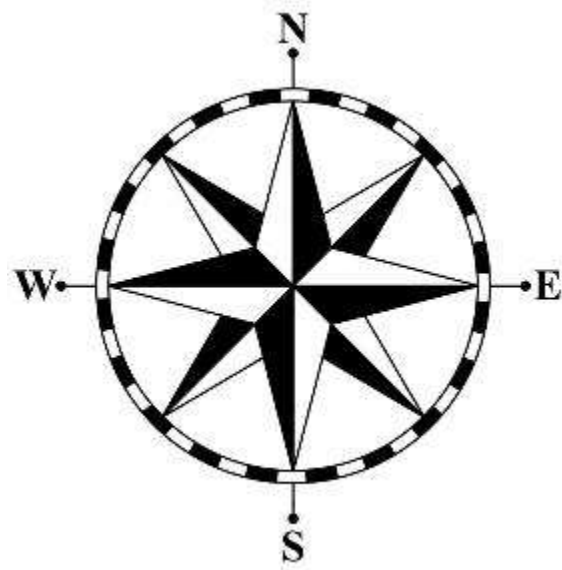


The flooring that was used on the 1st floor is used on the walls. These walls are massive, therefore there is a break with a pop of dark red along the bottom.

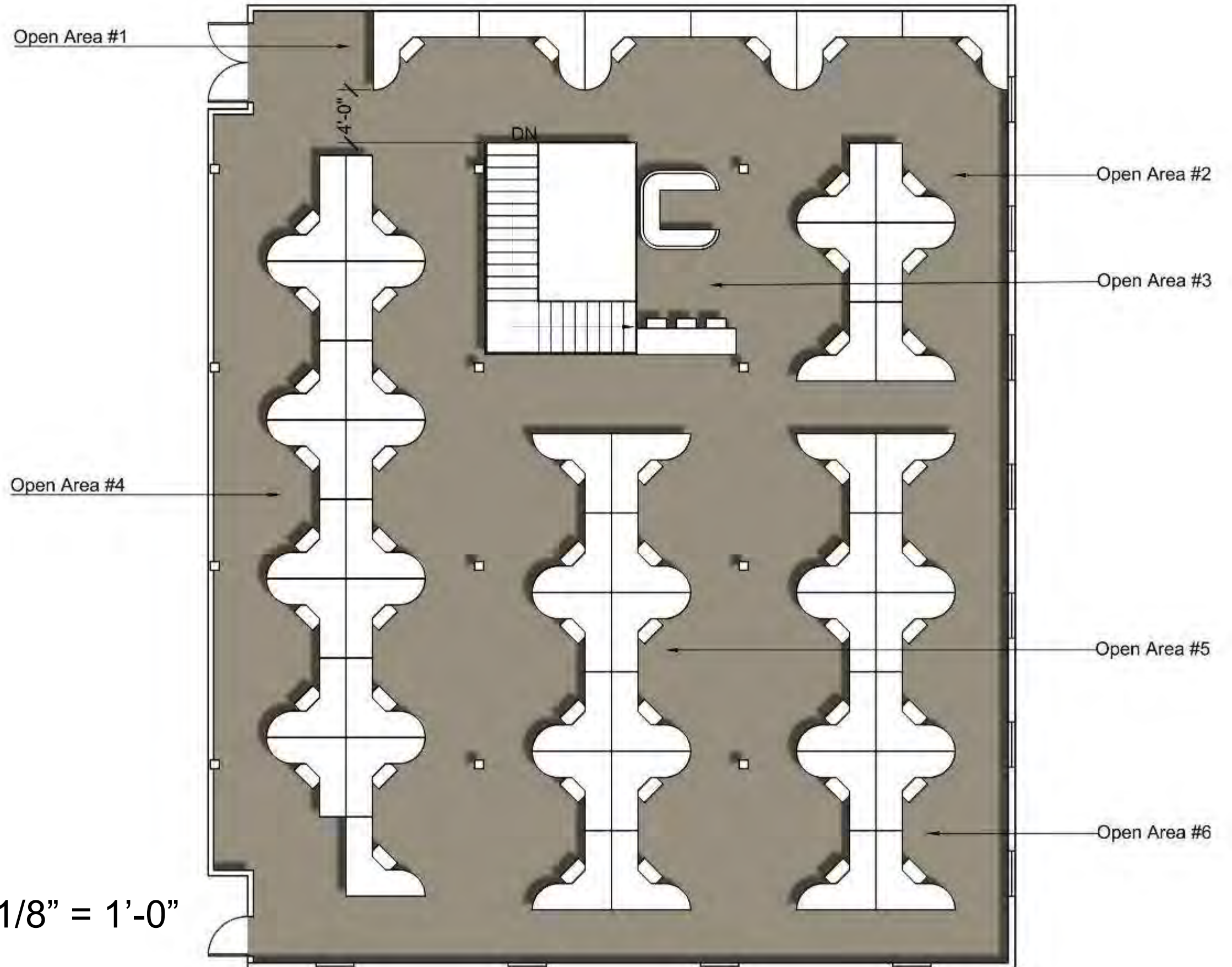
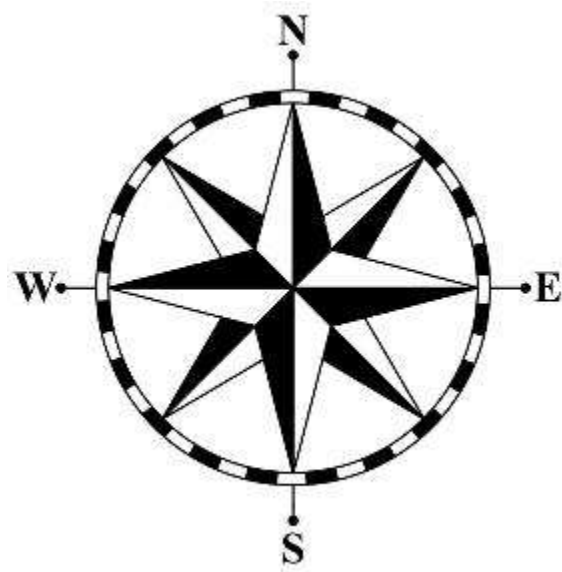
The furniture uses wood elements to give an aesthetic to tie into the railroads. The desk shapes are similar to the shapes of railroad spikes.



1st Floor Final Plan



2nd Floor Final Plan



1/8" = 1'-0"