

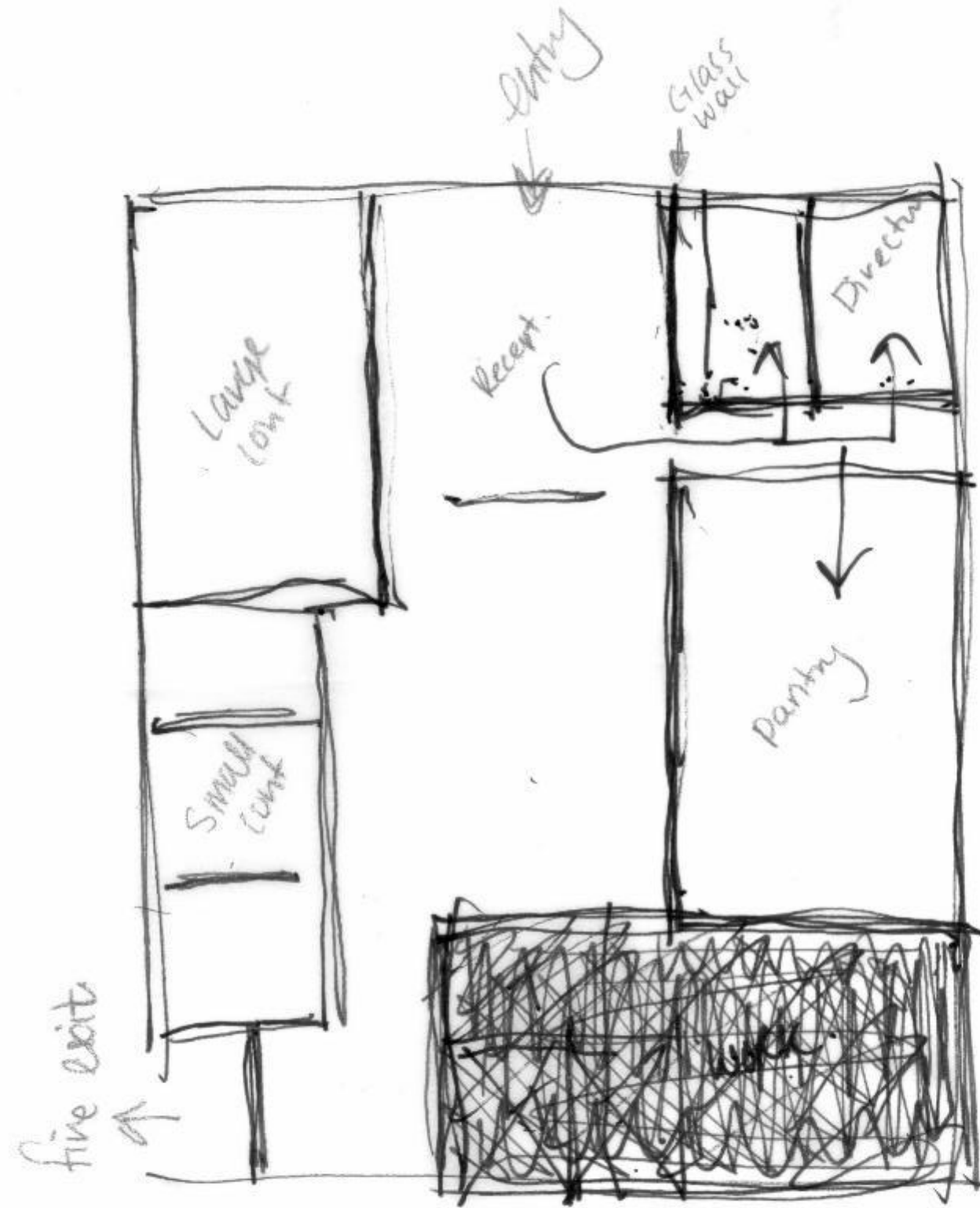
**Olivia Fox**

**Portfolio 2**

**Professor Charles Gustina**

**Fall 2017**

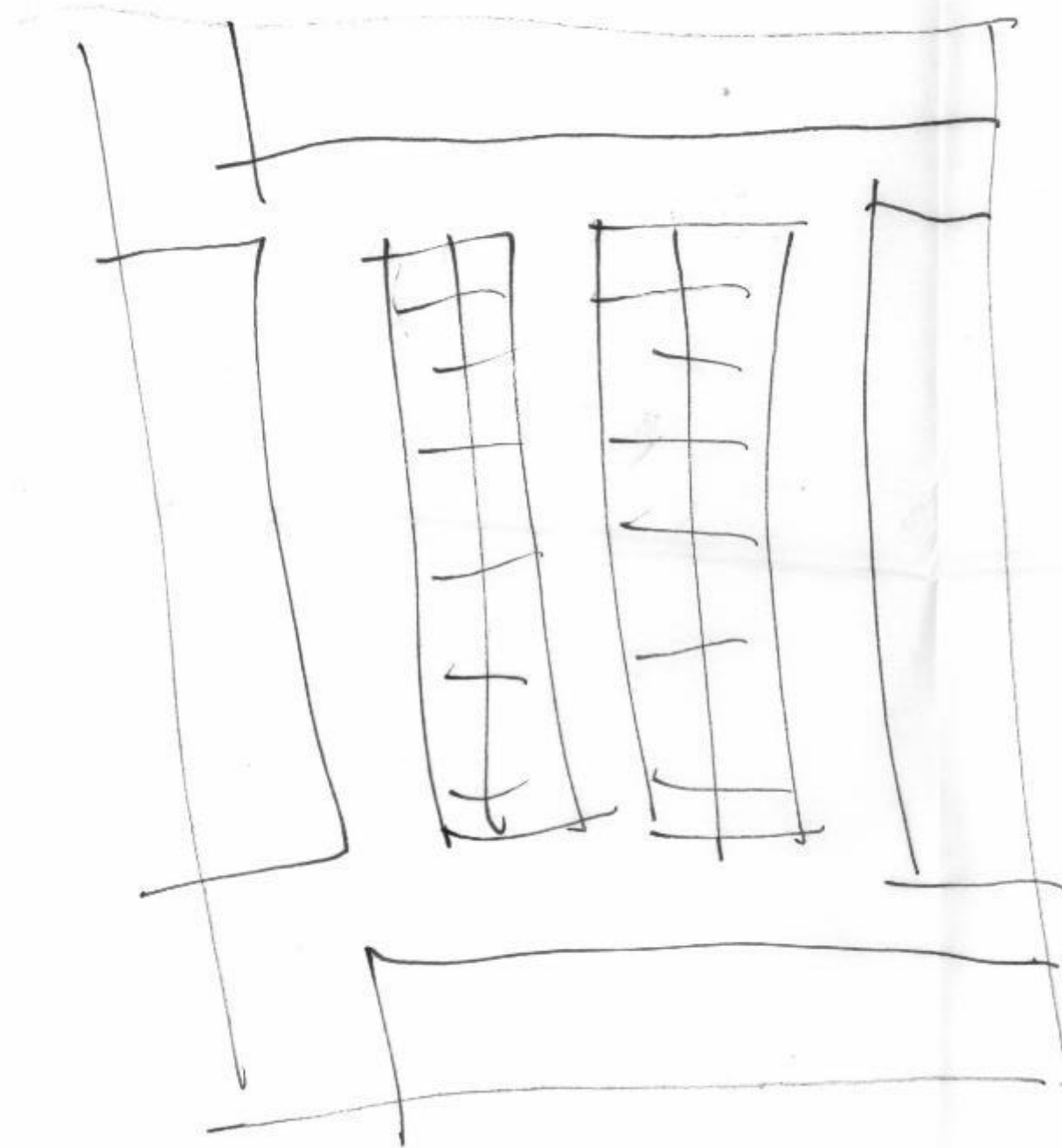
Bottom Floor  
Space Planning 1  
Sketch



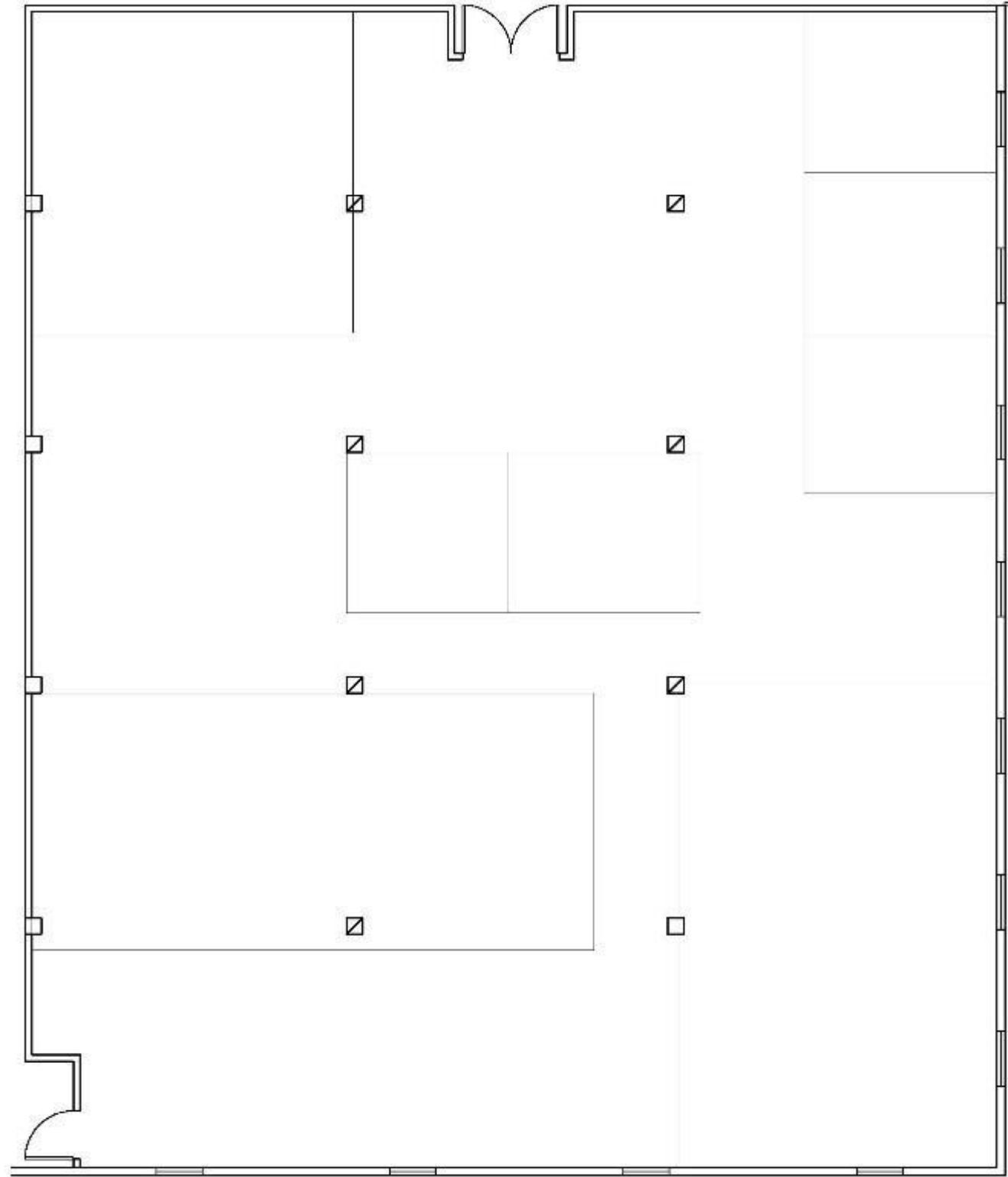
Top Floor

Space Planning 1

Sketch

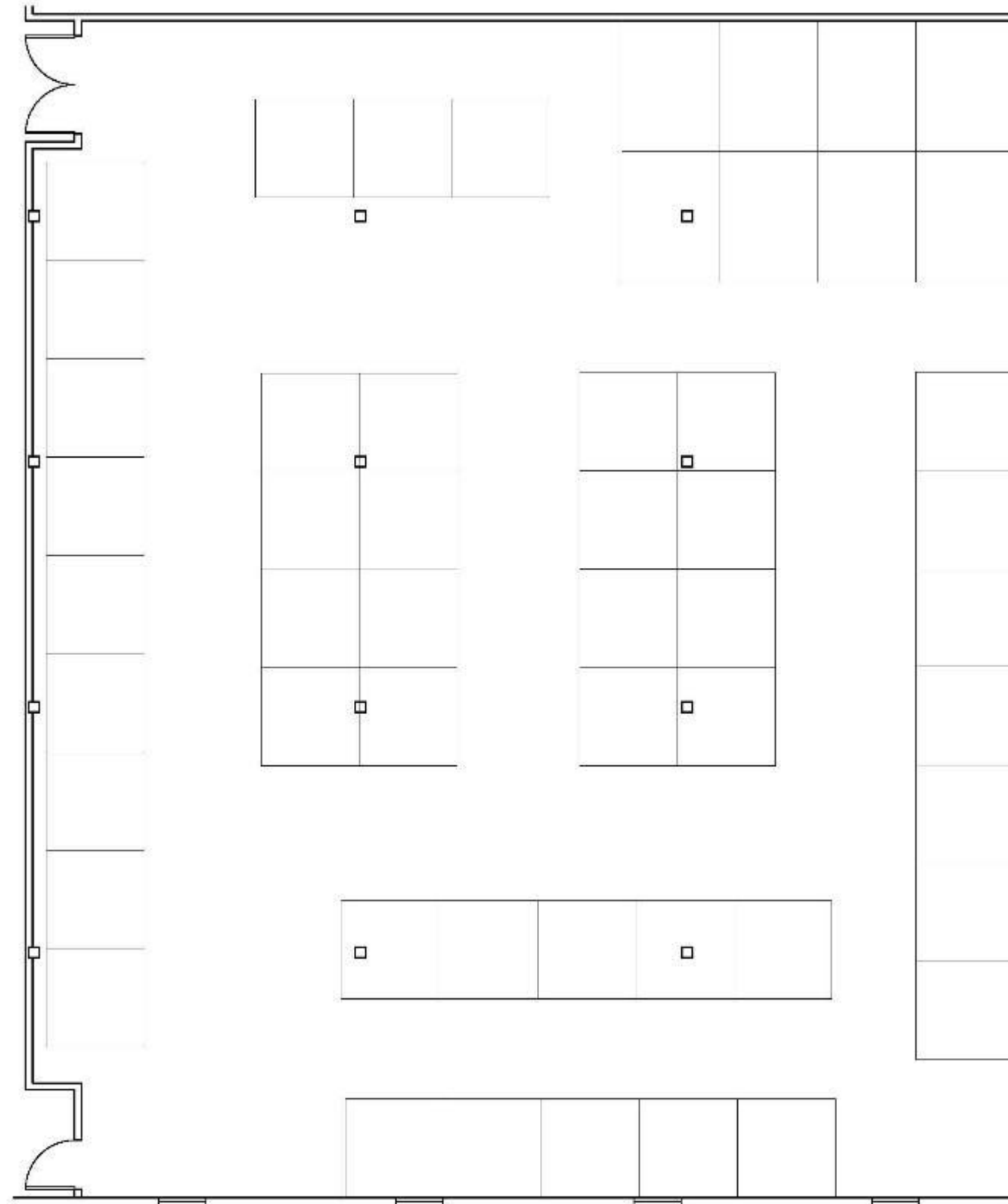


Bottom Floor  
Space Planning 1  
Auto Cad



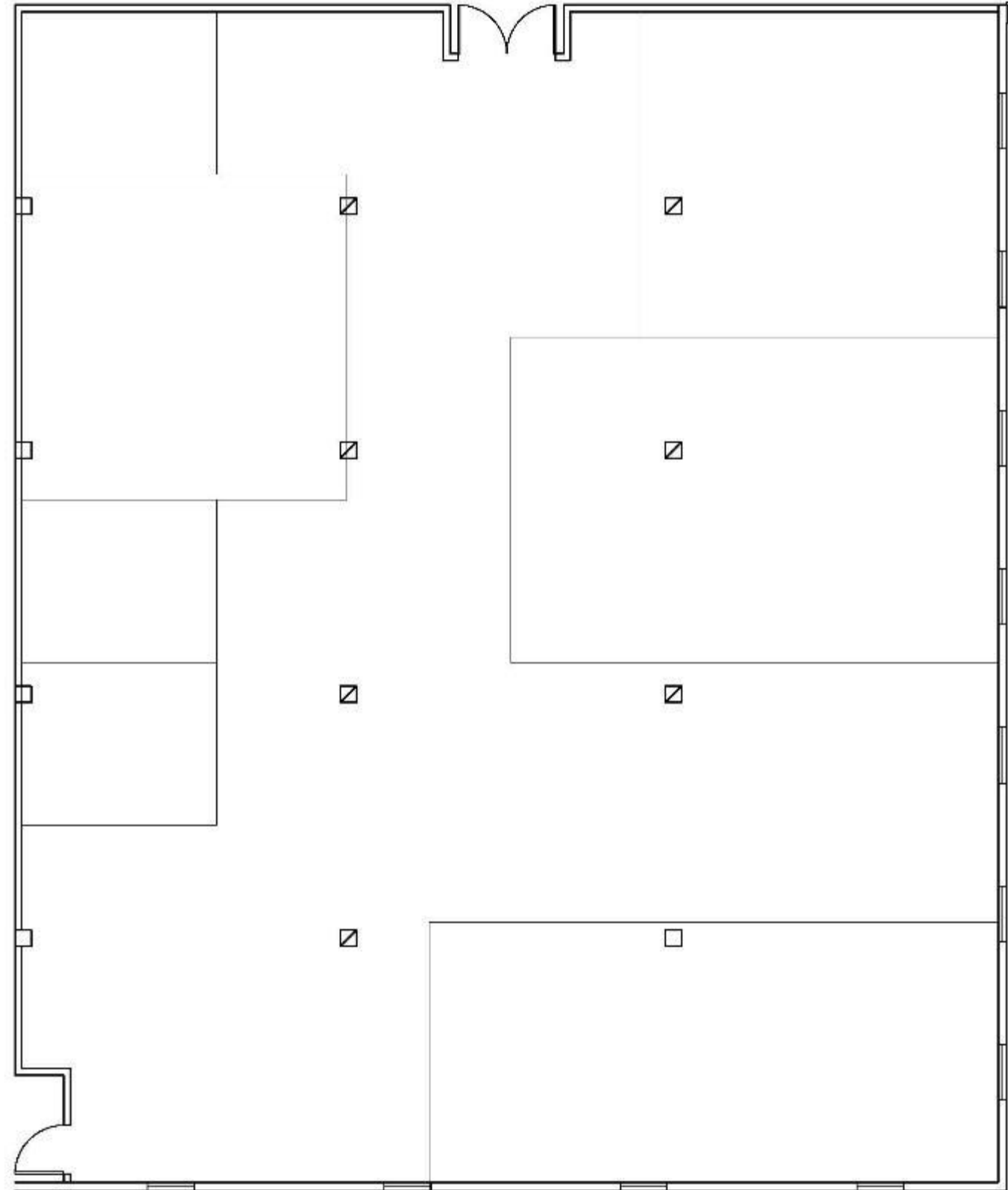
DRAWN TO 1/8"=1' SCALE

Top Floor  
Space Planning 1  
Auto Cad



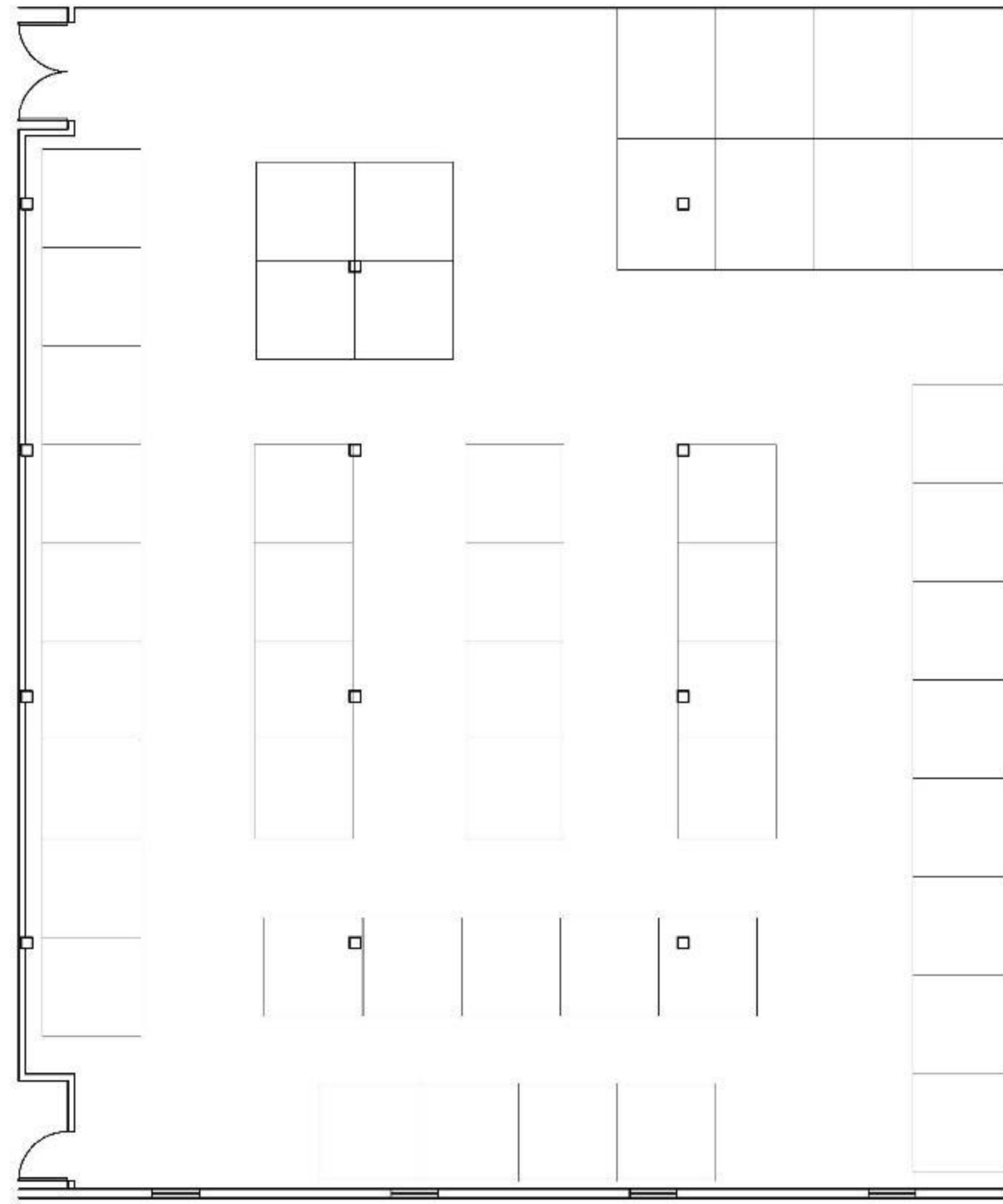
DRAWN TO 1/8"=1' SCALE

Bottom Floor  
Space Planning 2  
Auto Cad



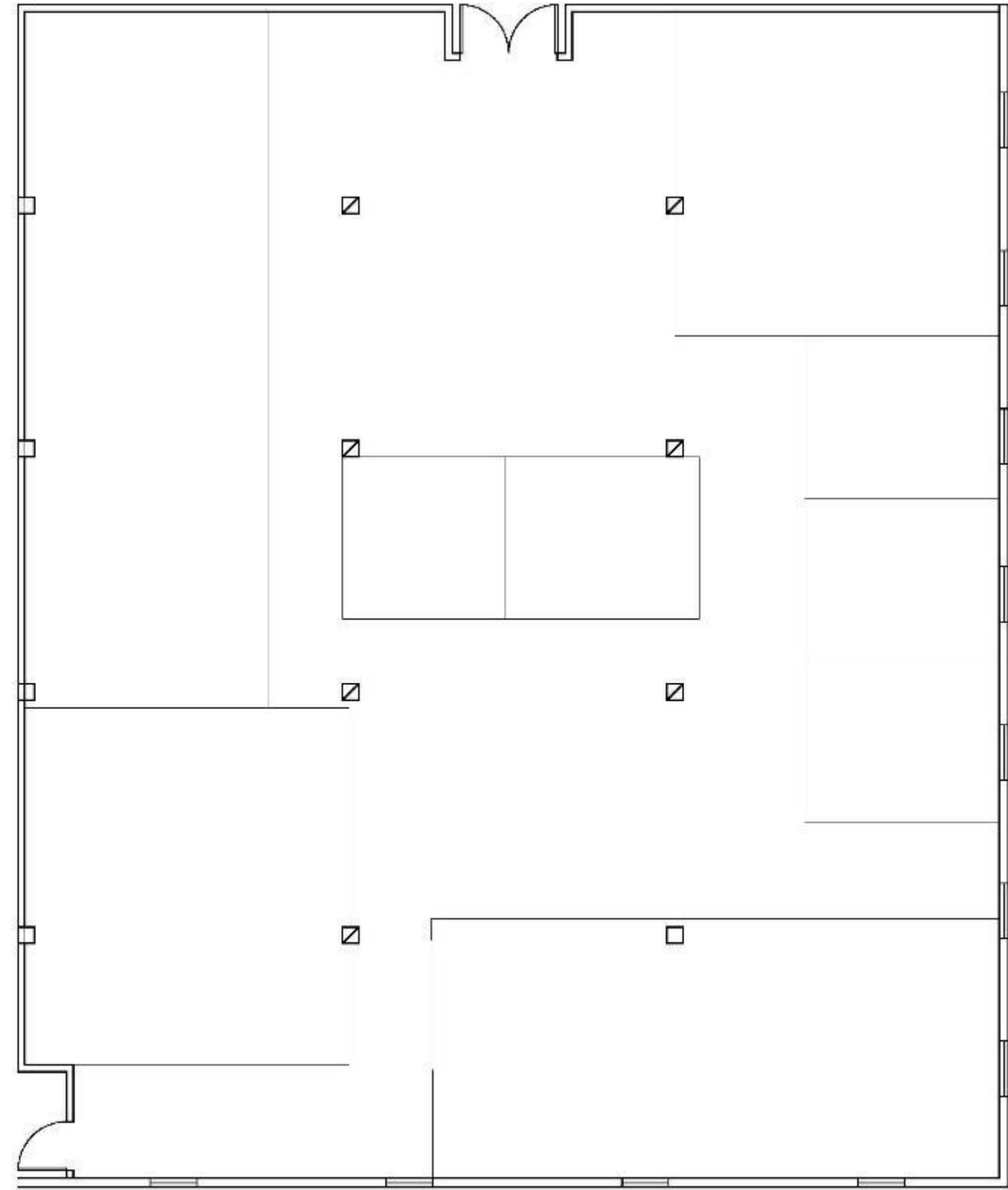
DRAWN TO 1/8"=1' SCALE

Top Floor  
Space Planning 2  
Auto Cad



DRAWN TO 1/8"=1' SCALE

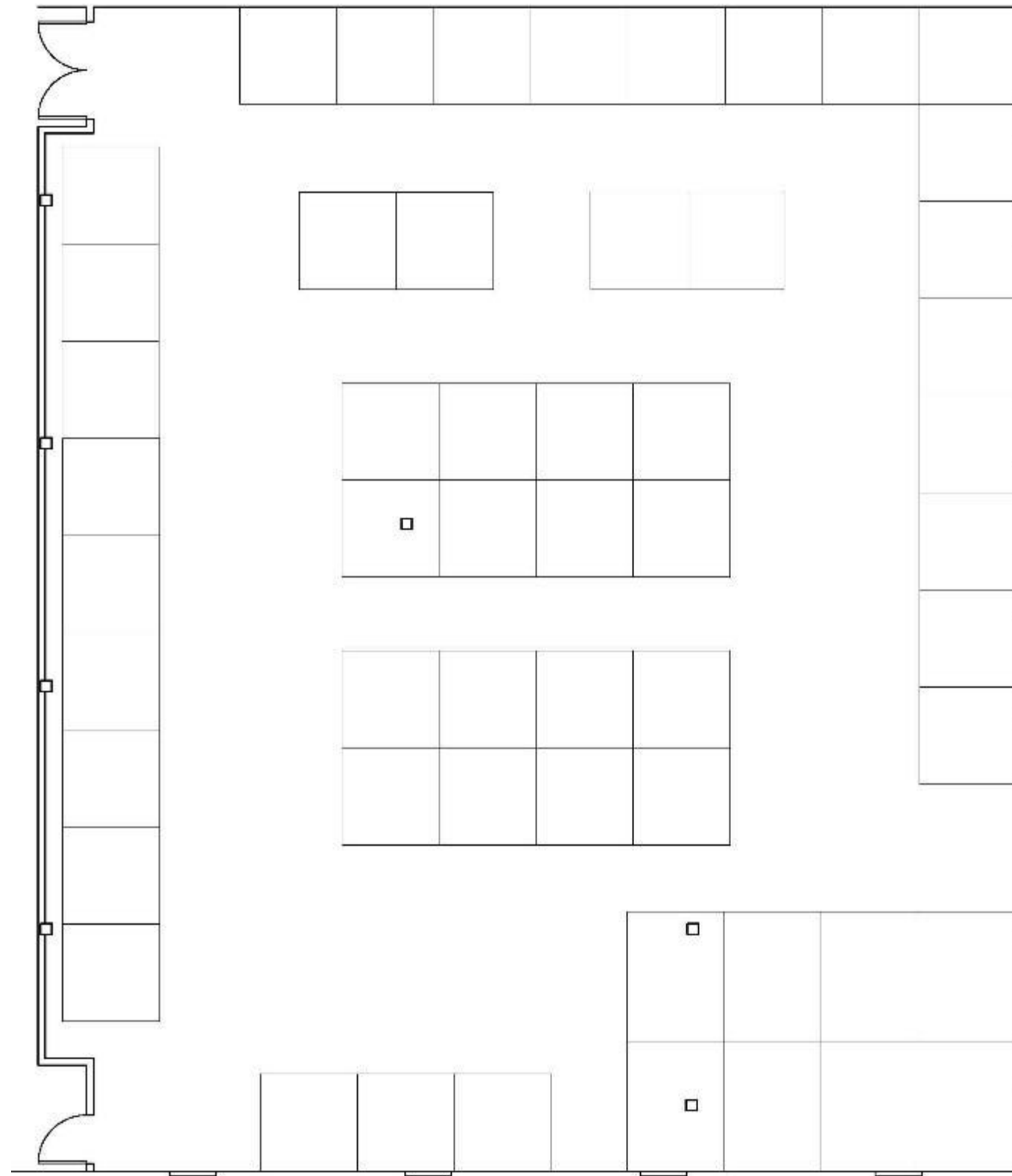
Bottom Floor  
Space Planning 3  
Auto Cad



DRAWN TO 1/8"=1' SCALE



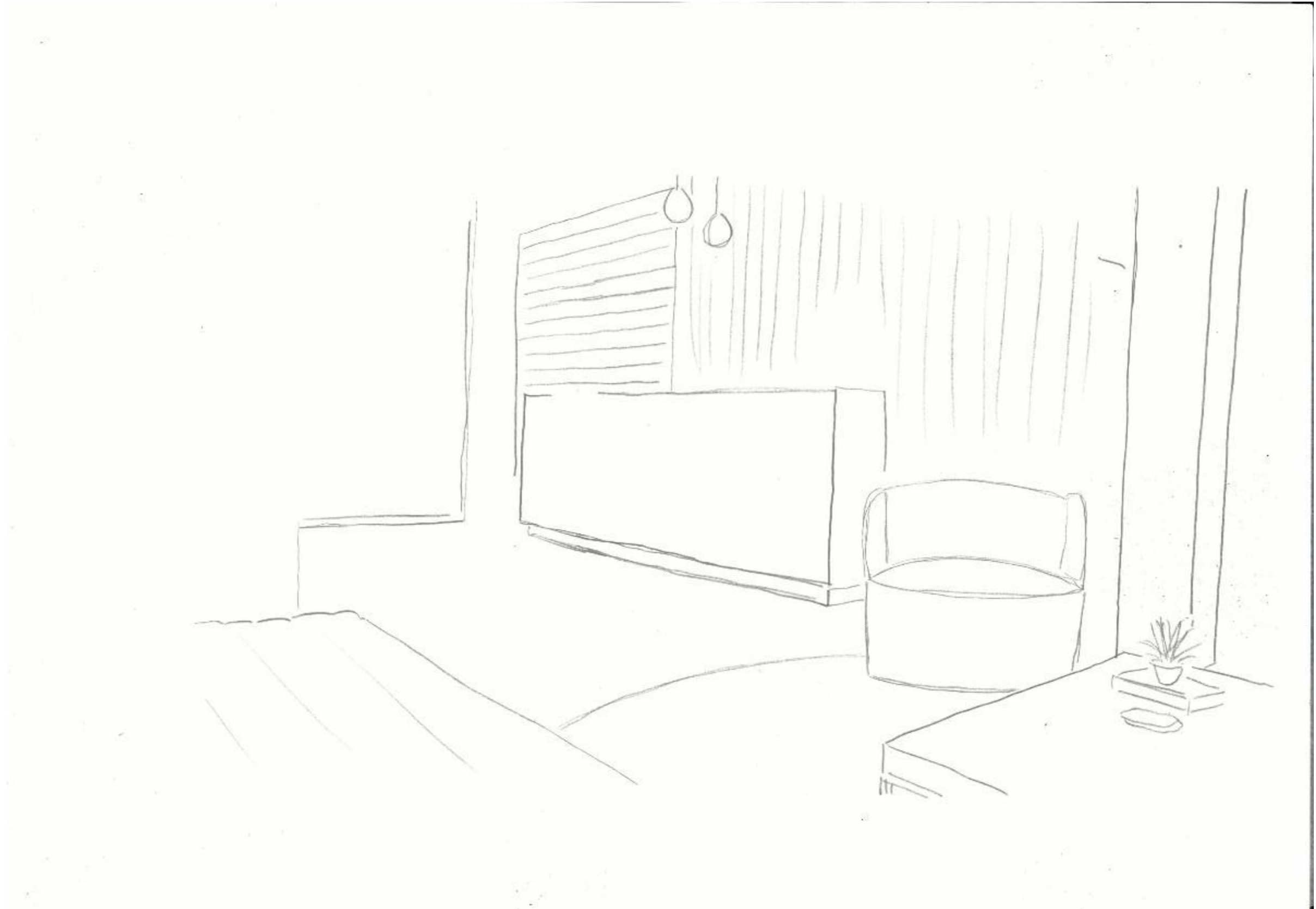
Top Floor  
Space Planning 3  
Auto Cad



DRAWN TO 1/8"=1' SCALE

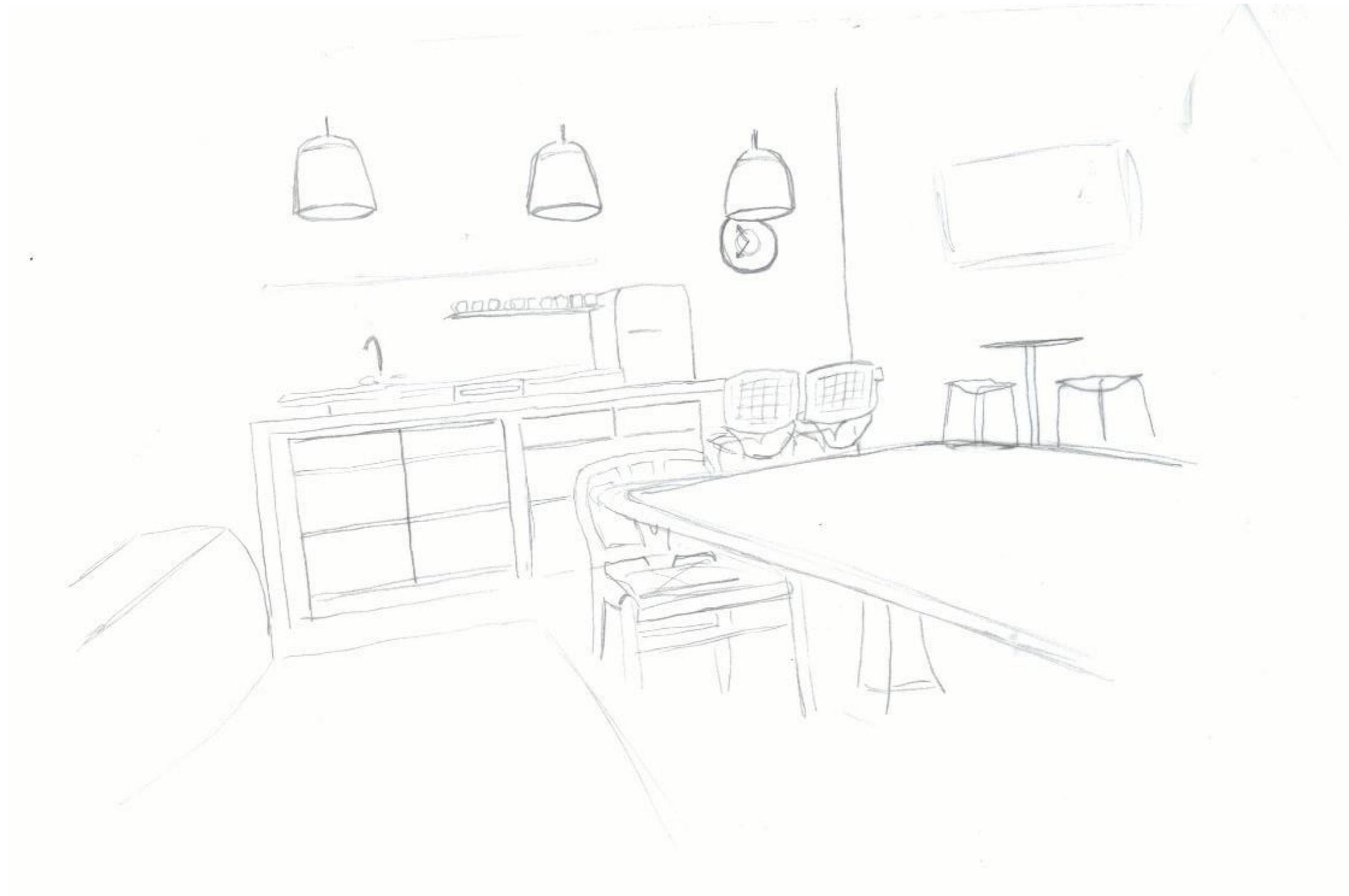
Sketch Perspective

Reception



Sketch Perspective

Pantry/Barista



Sketch Perspective

Exhibition



Sketch Perspective

Work Area





Sketchup Reception Scene





Sketchup Pantry Scene





Sketchup Exhibition Scene





Sketchup Work Area Scene





## Concept Statement

Inspired by the Angel Oak tree, found commonly in South Carolina, the design of this local building draws from the rich heritage of the Coastal South. Uniting both the earthy feel of the Angel Oak and contemporary design will create the perfect office environment leading you easily through the space and drawing your eyes toward the different materials and textiles used.





Inspiration Images





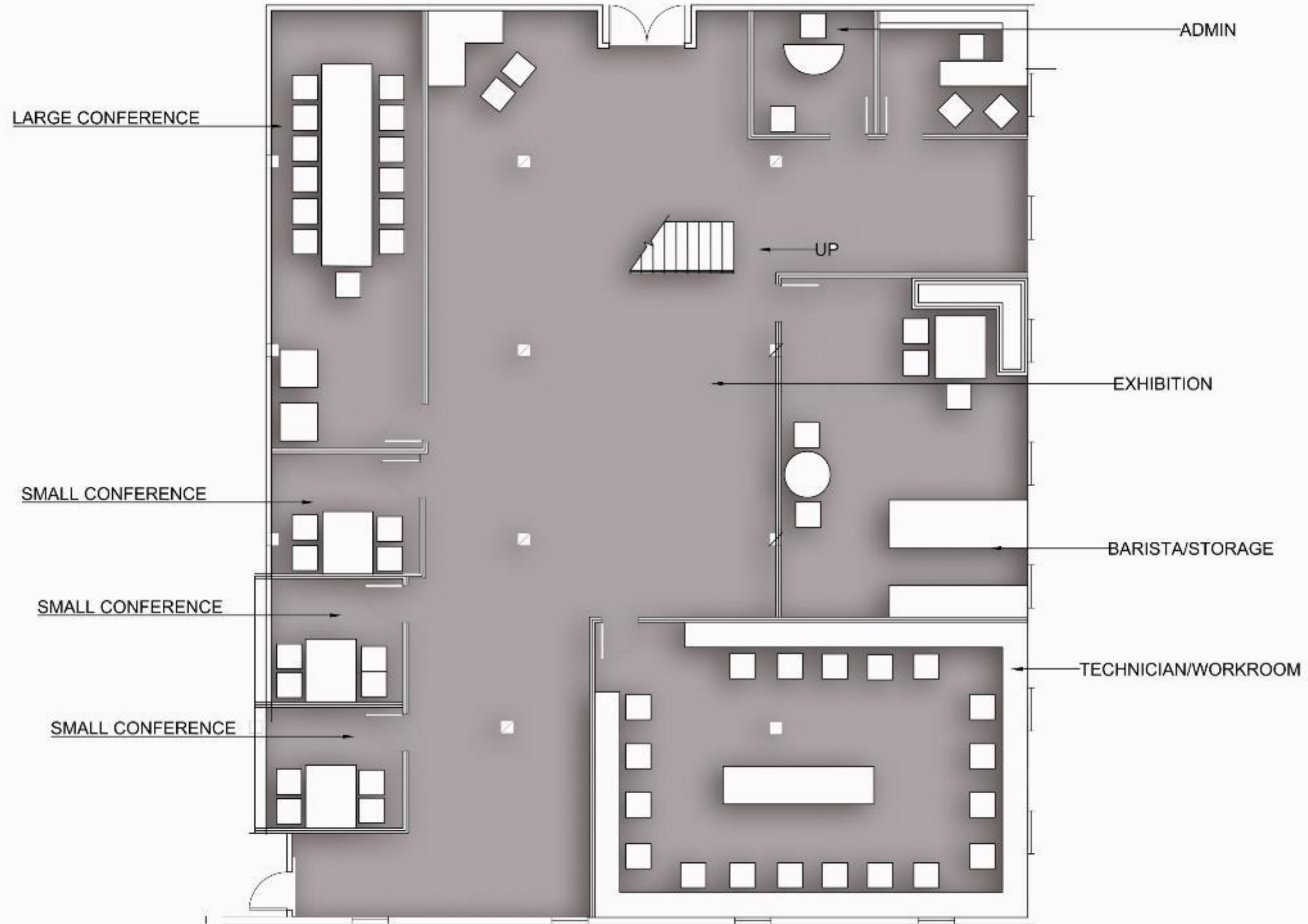
Bottom Floor Architectural Finishes



Top Floor Architectural Finishes



Bottom Floor Final Plan



Top Floor Final Plan

