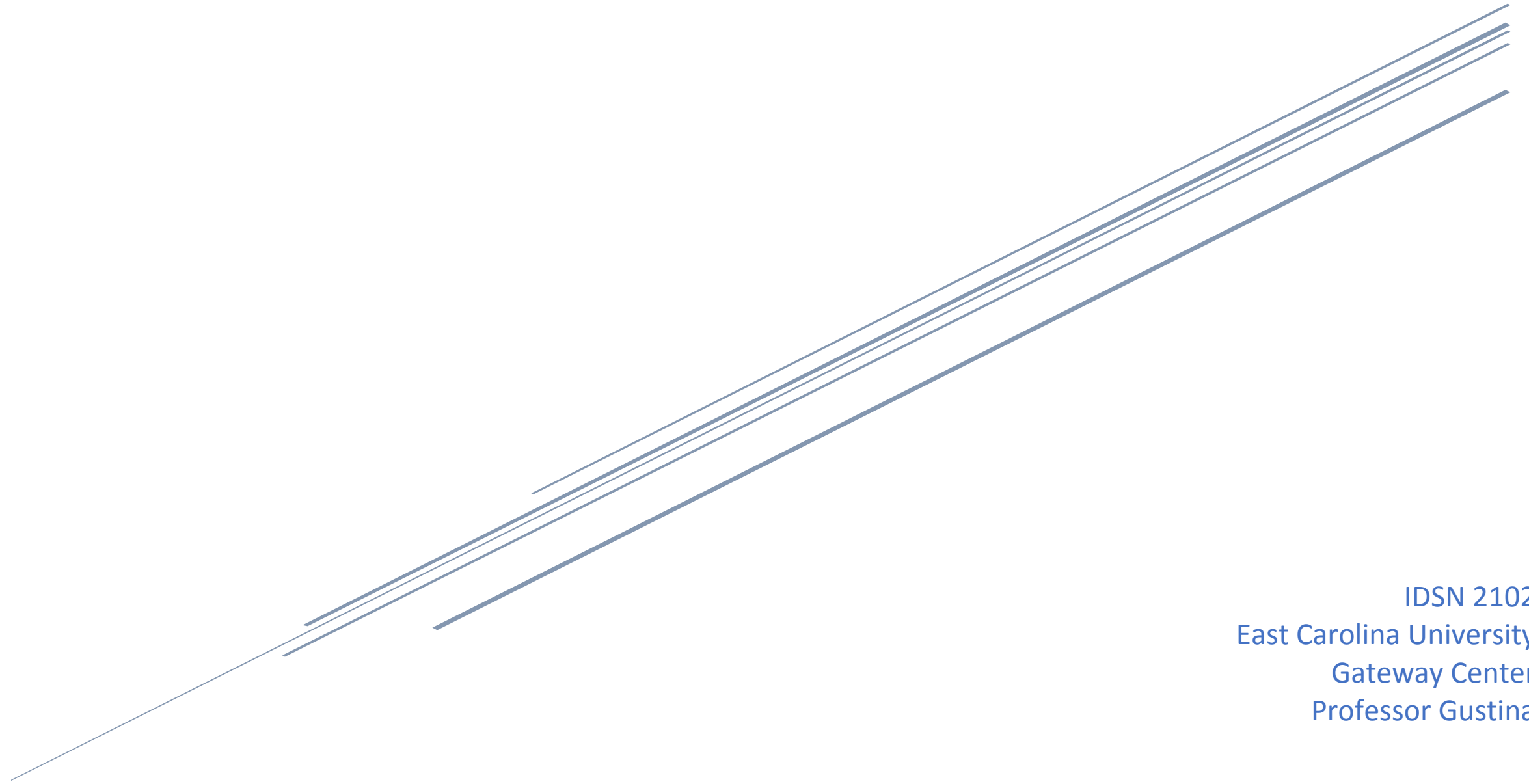


PORTFOLIO 2

Gina Grasso

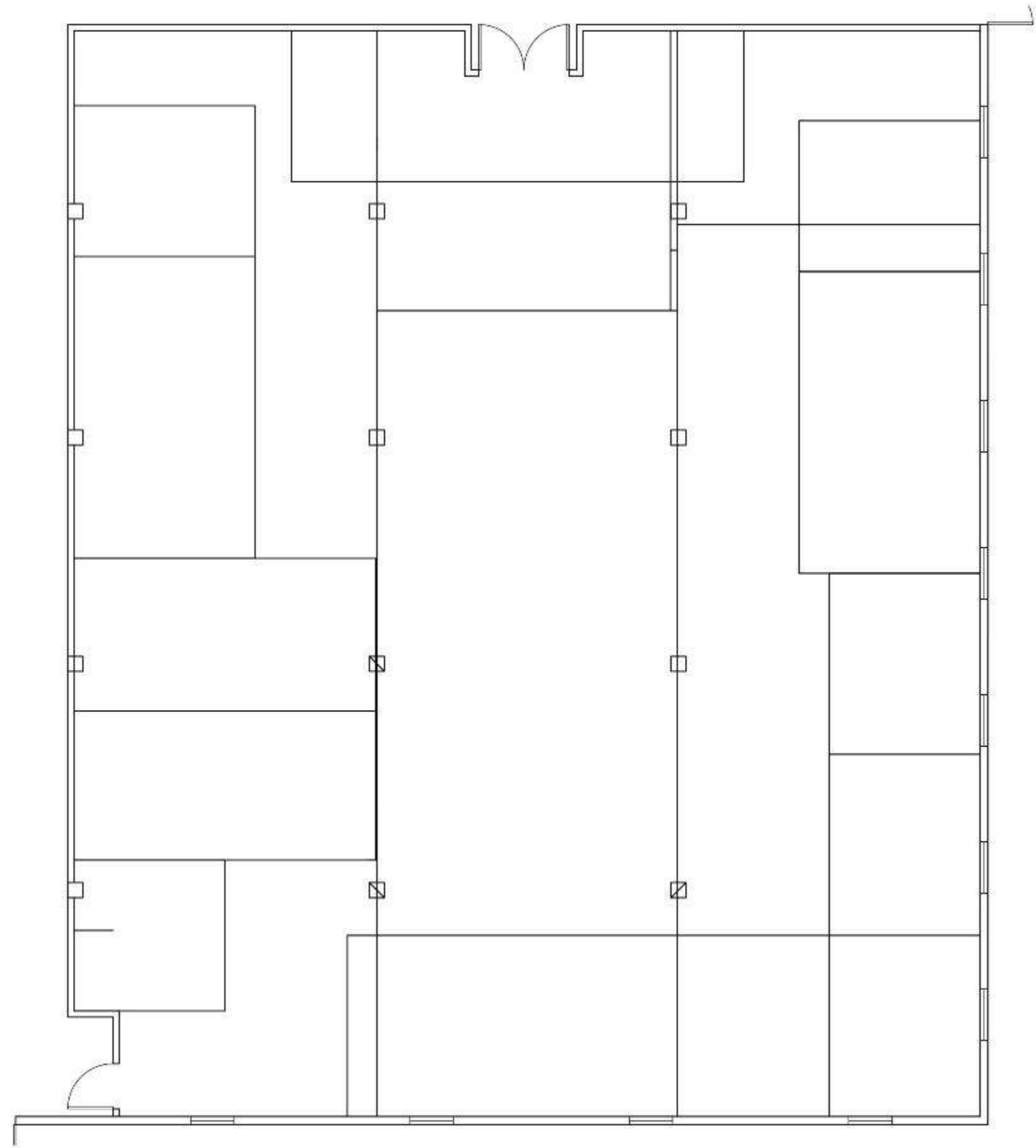


IDSN 2102
East Carolina University
Gateway Center
Professor Gustina

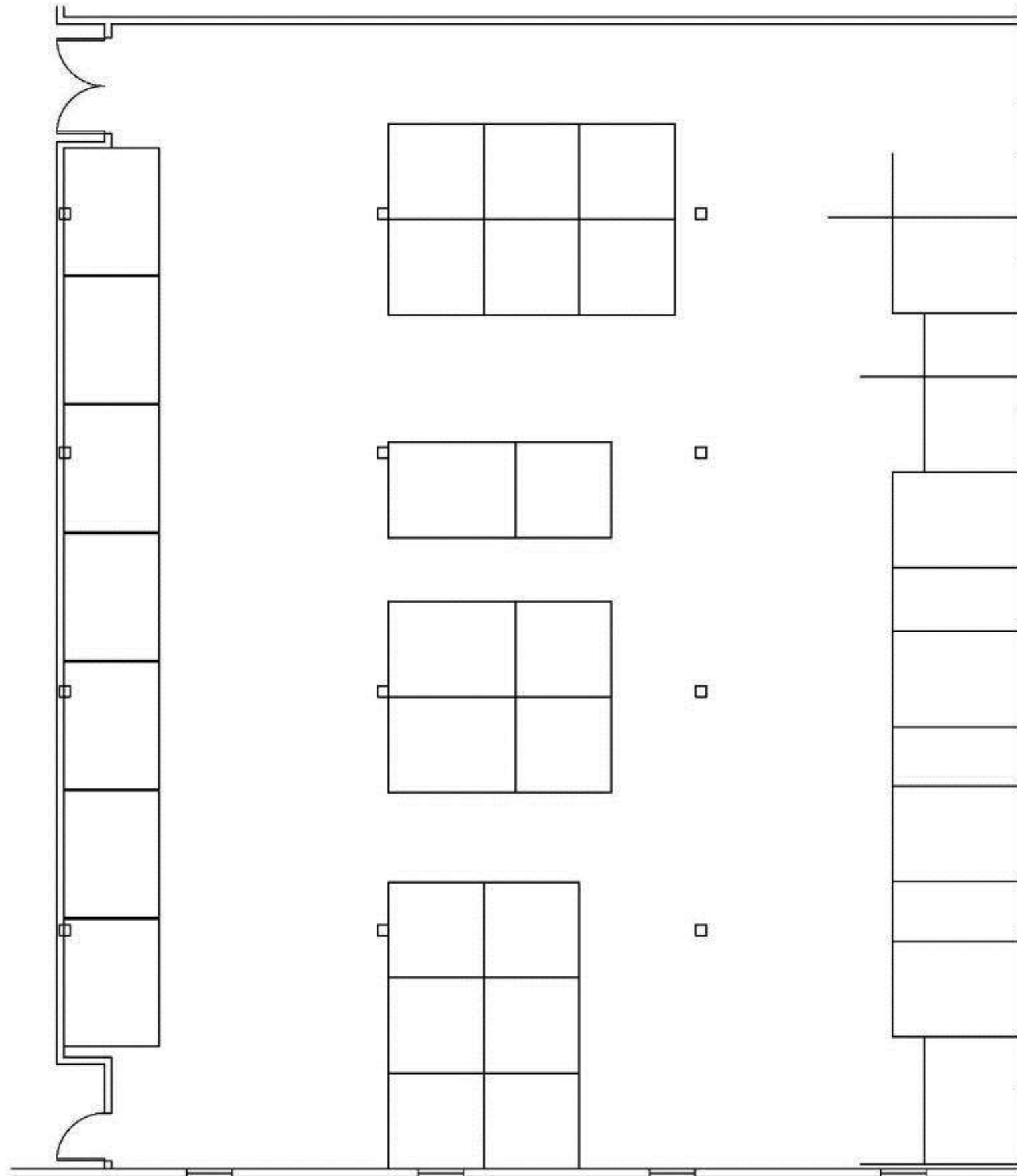
Space Plan Sketches

Model 1

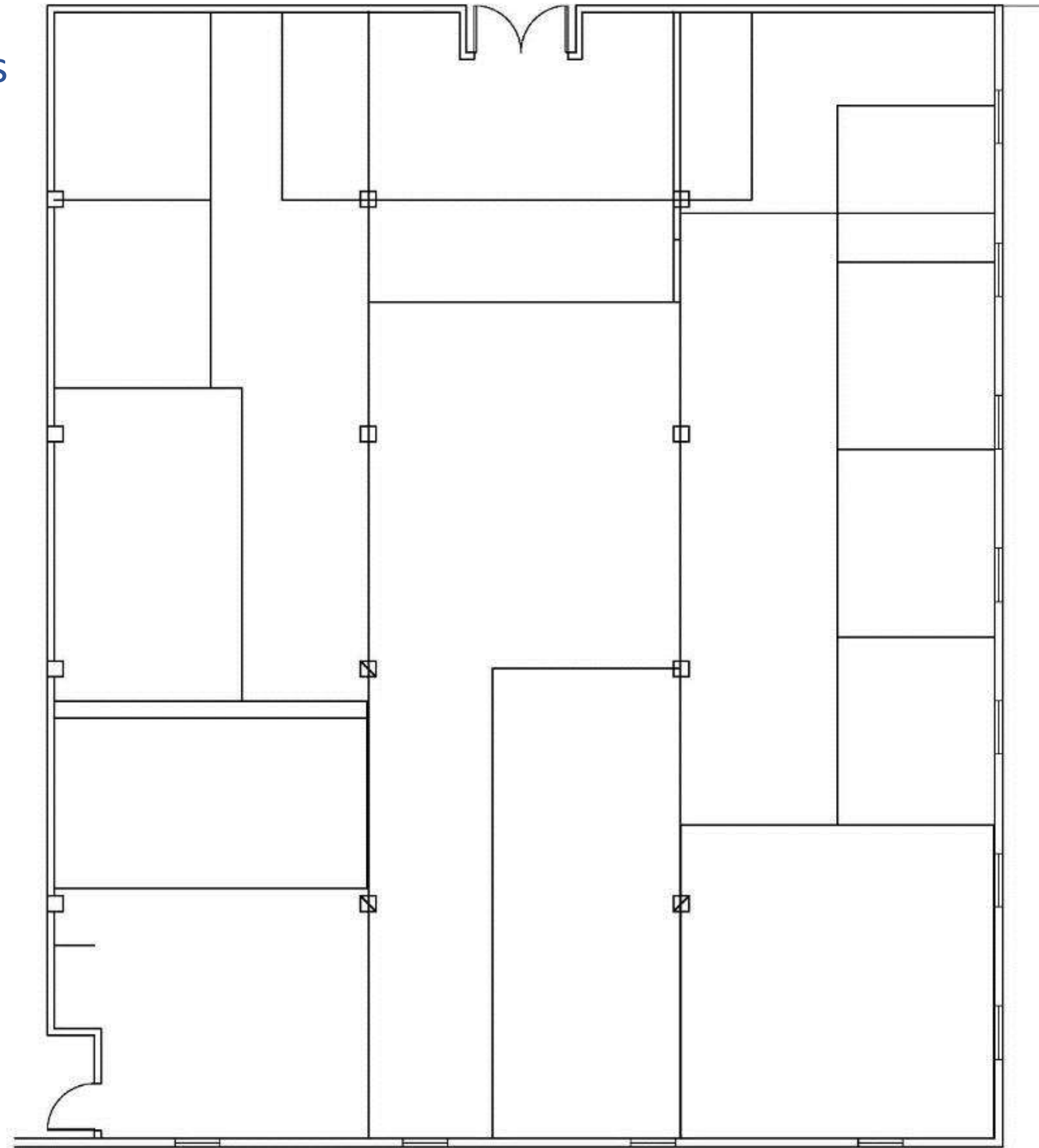
Rooms



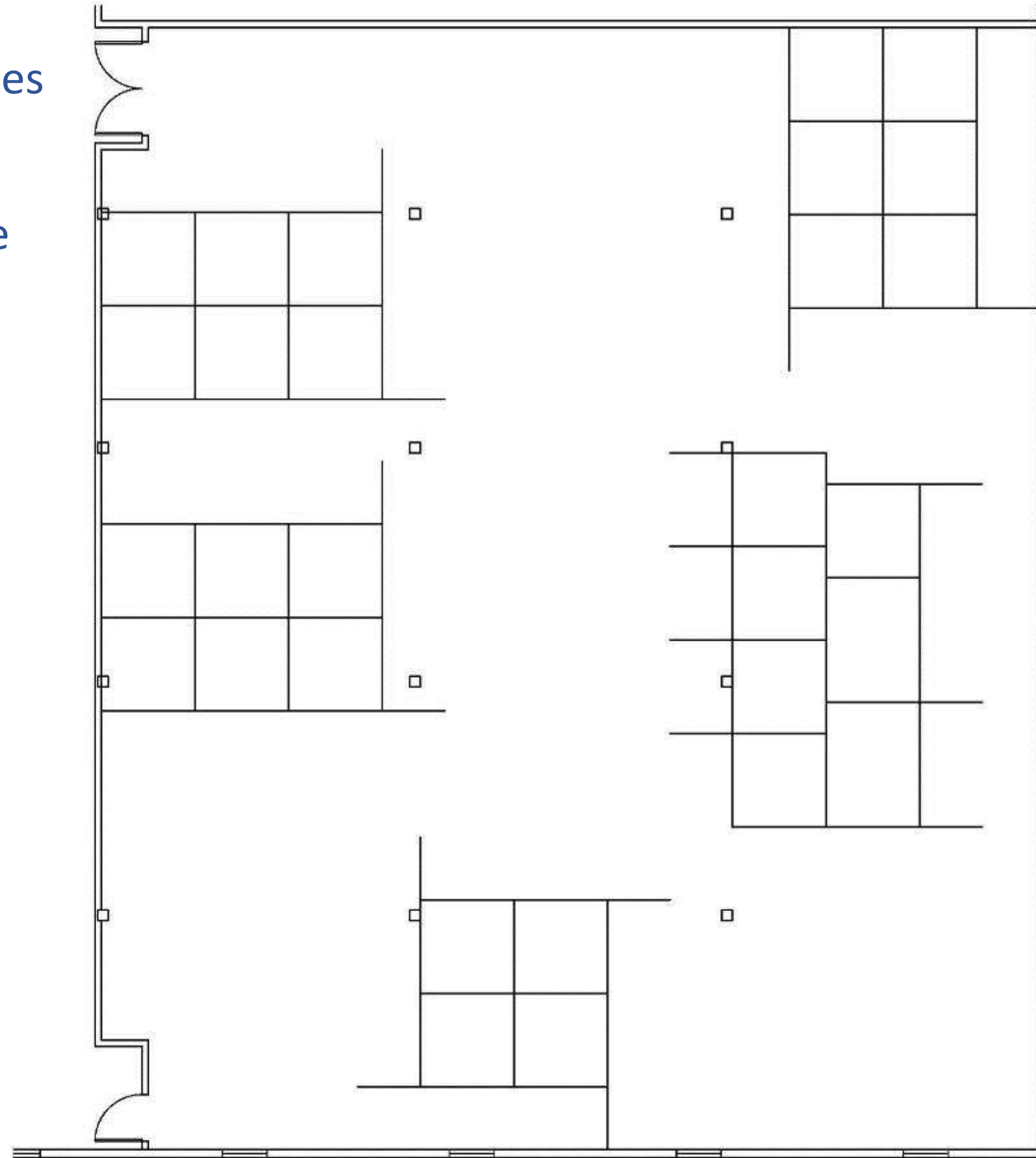
Space Plan Sketches
Model 1
Upper Floor Space



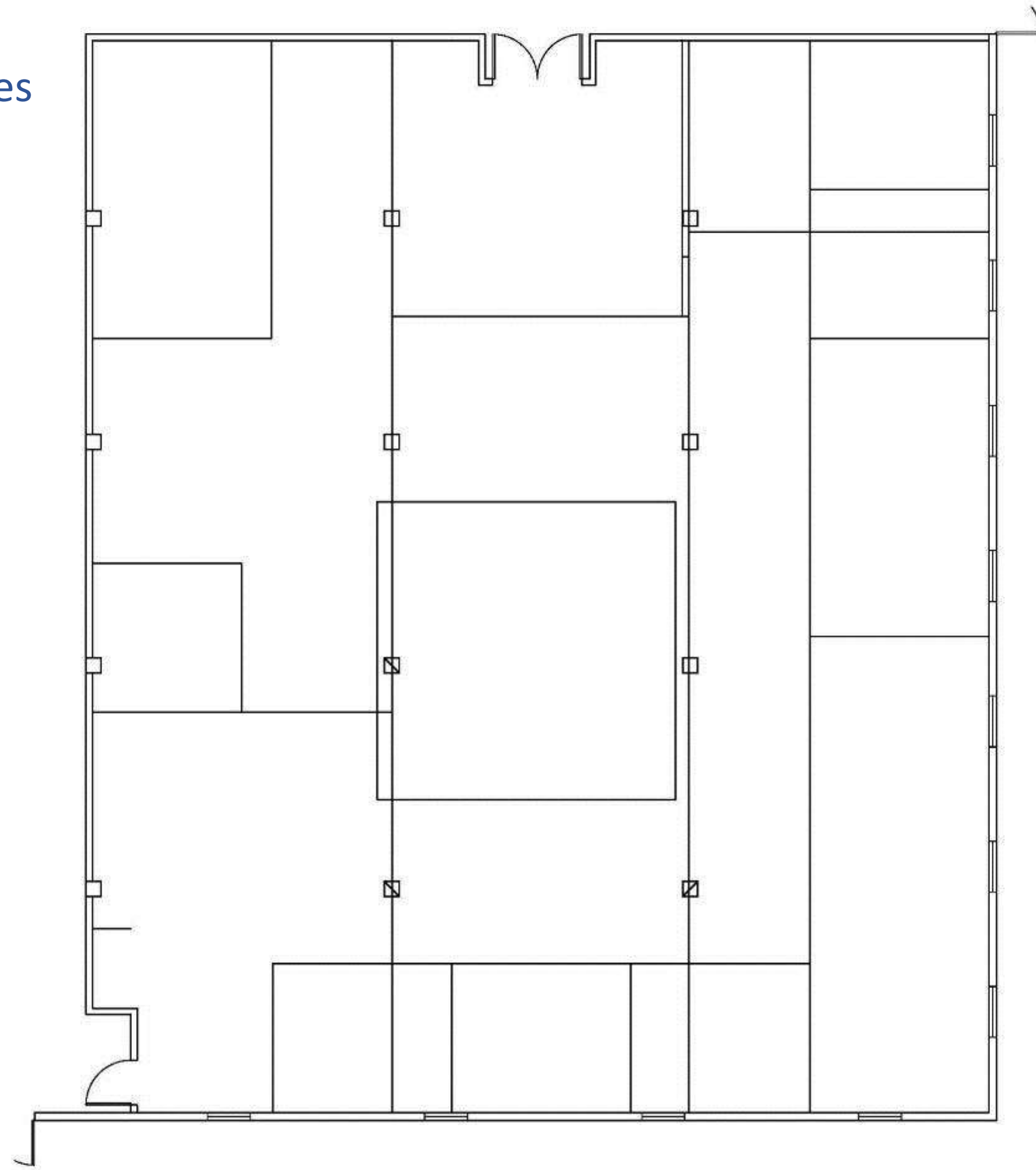
Space Plan Sketches
Model 2
Rooms



Space Plan Sketches
Model 2
Upper Floor Space



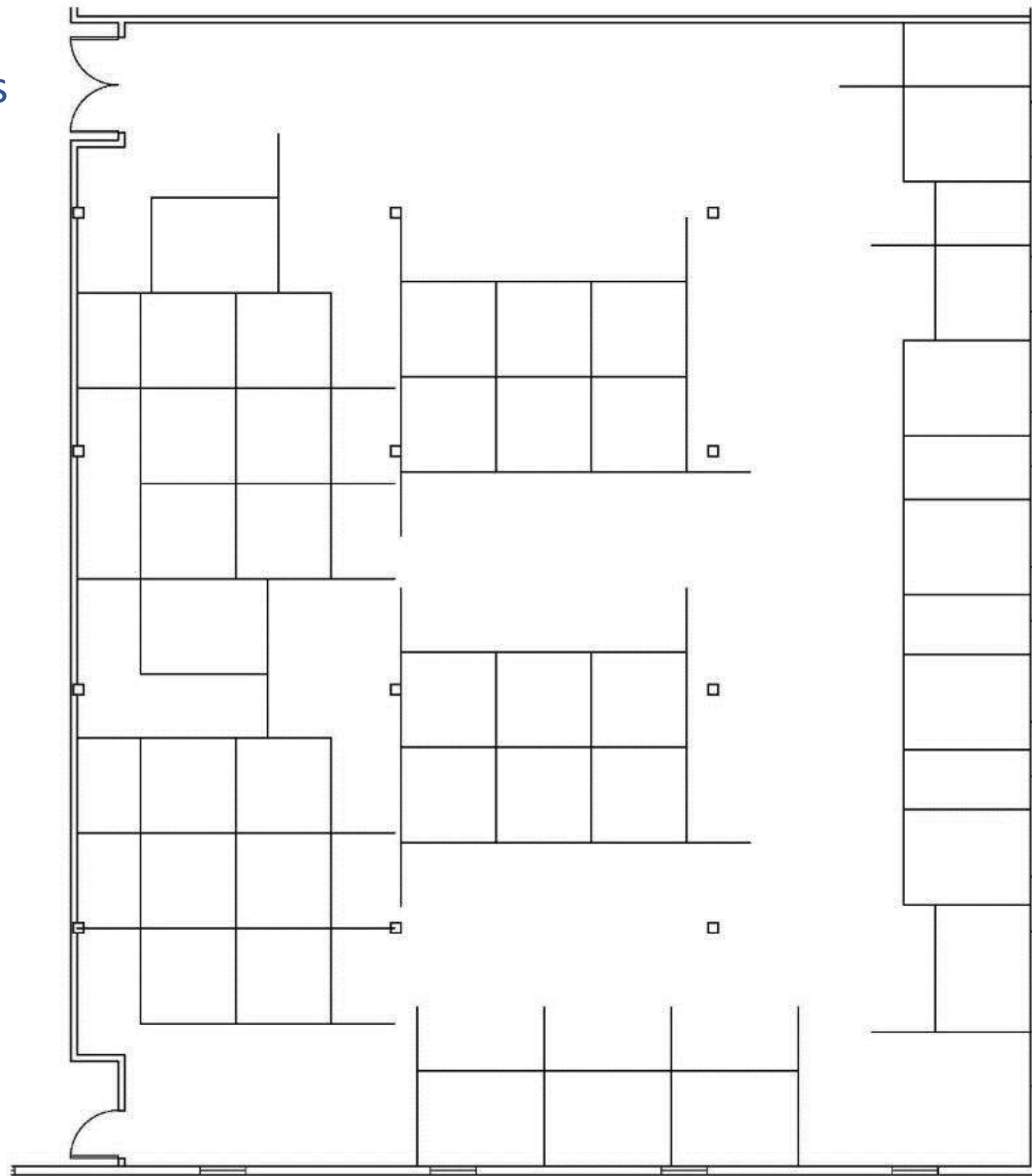
Space Plan Sketches
Model 3
Rooms



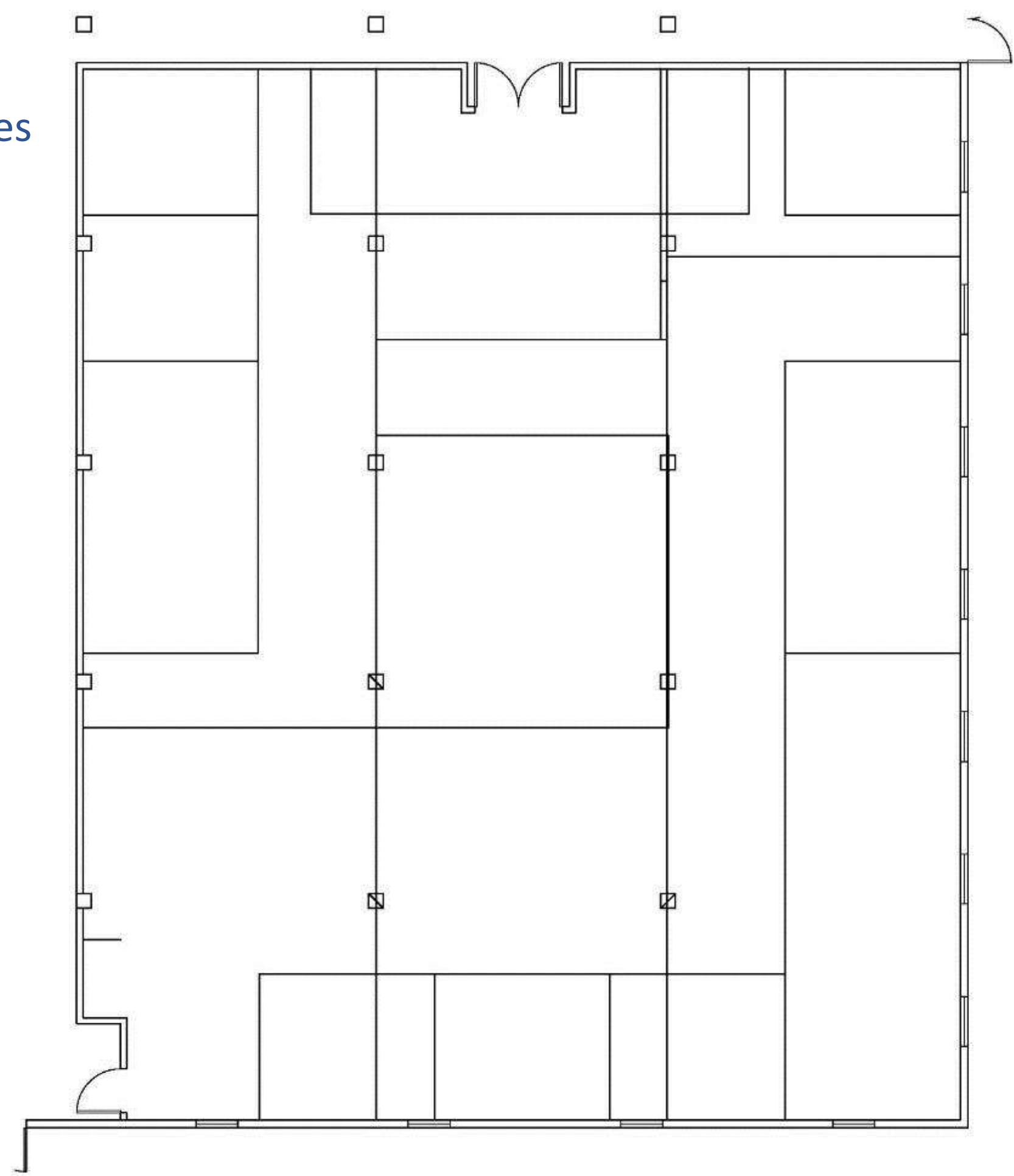
Space Plan Sketches

Model 3

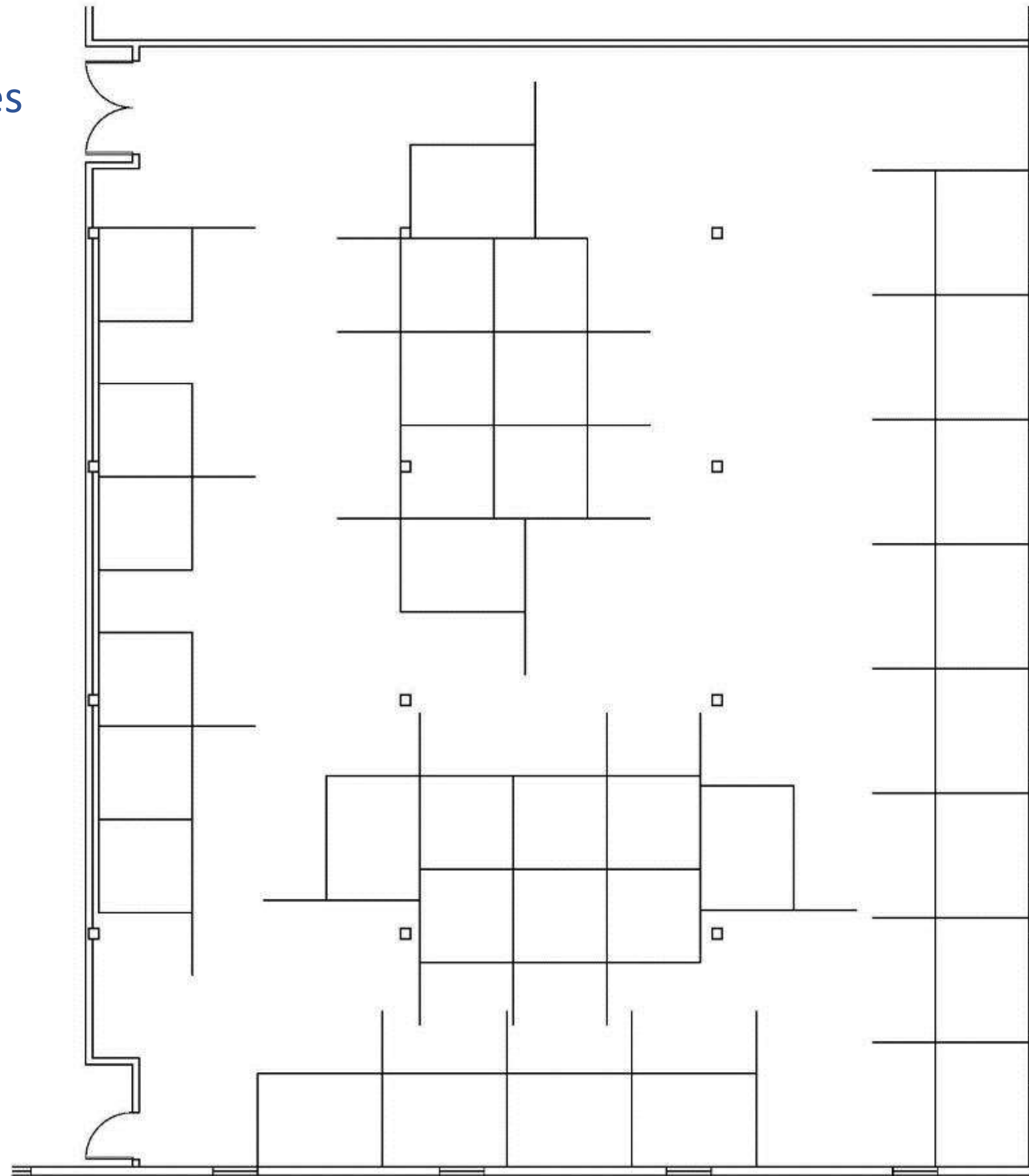
Upper Floor Space



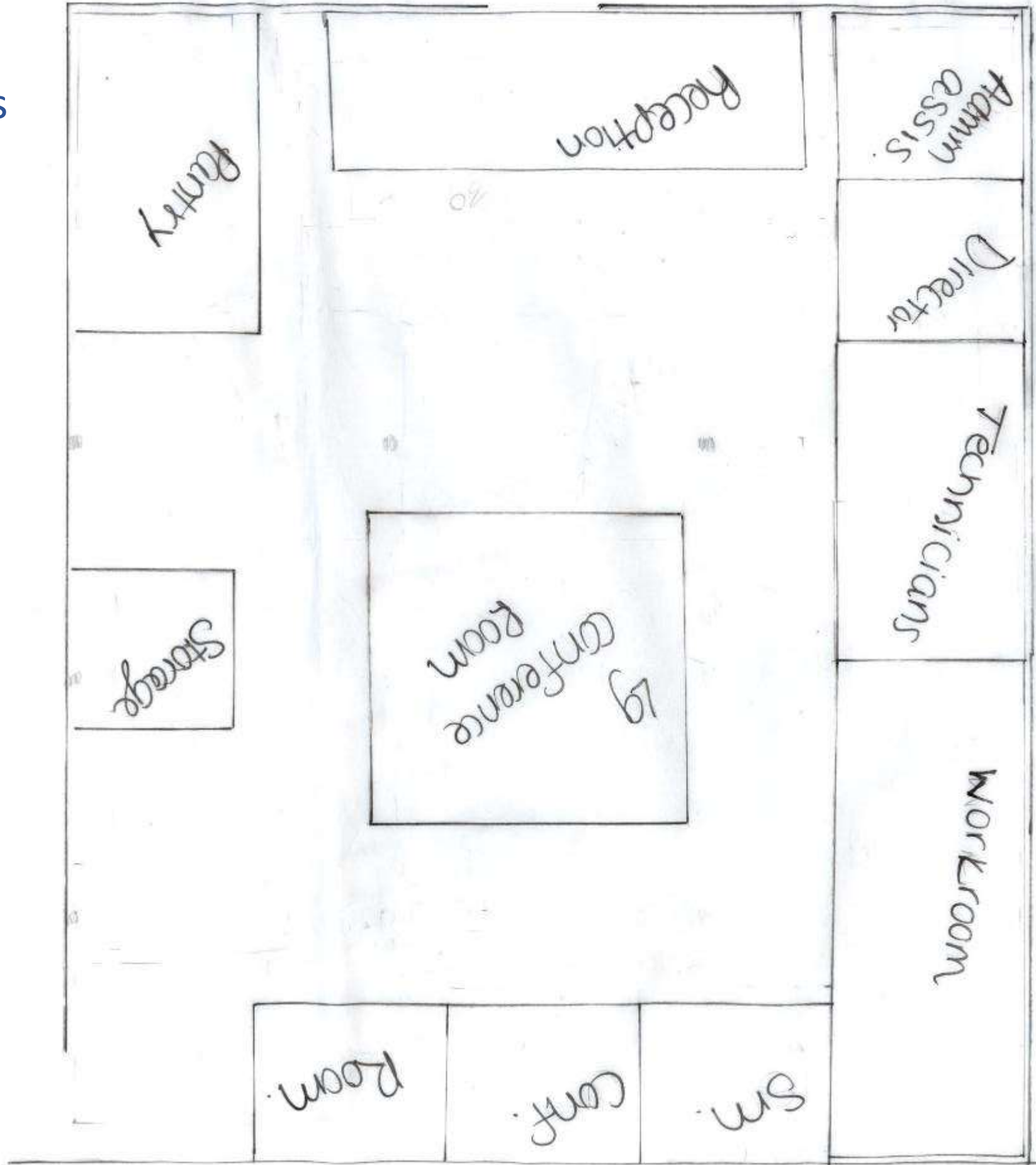
Space Plan Sketches
Model 4
Rooms



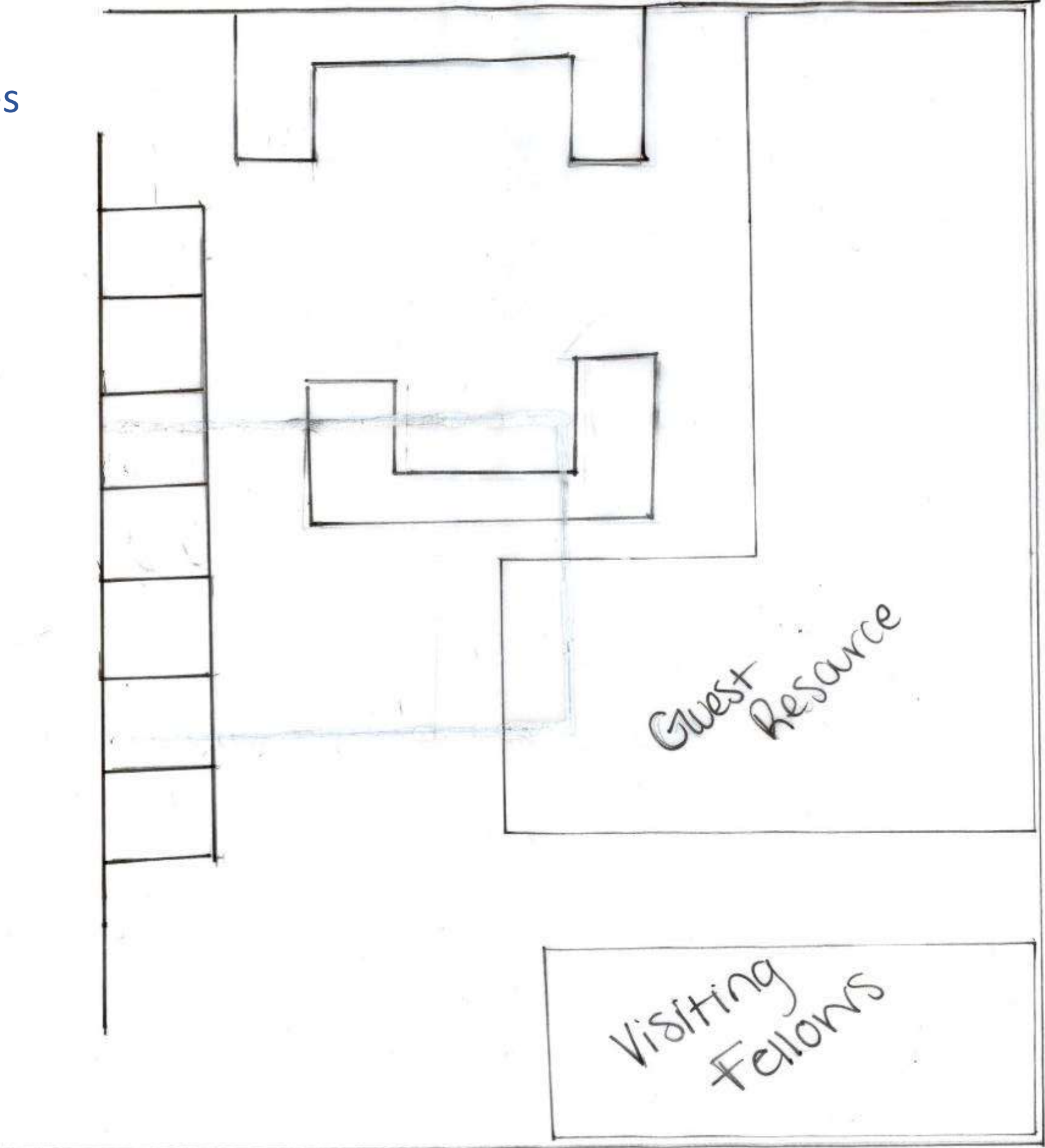
Space Plan Sketches
Model 4
Upper Floor Space



Space Plan Sketches

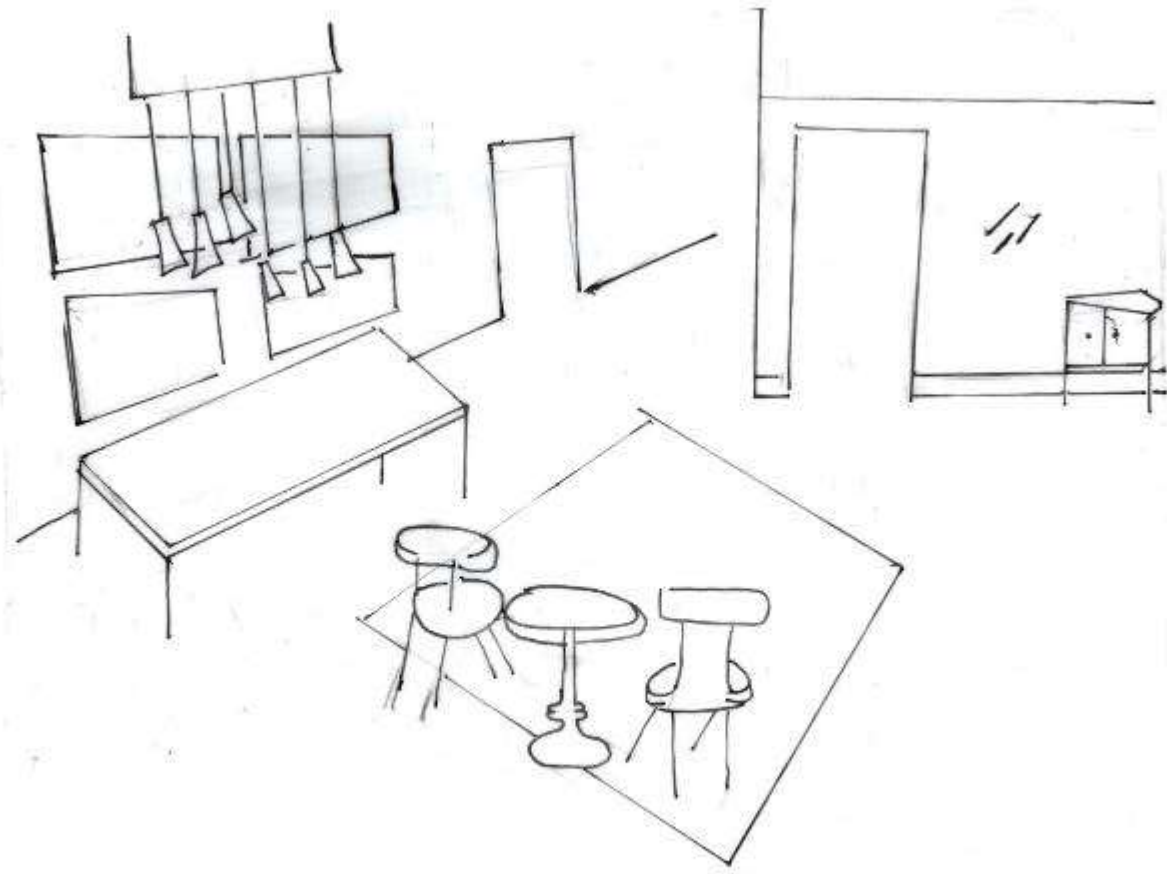


Space Plan Sketches

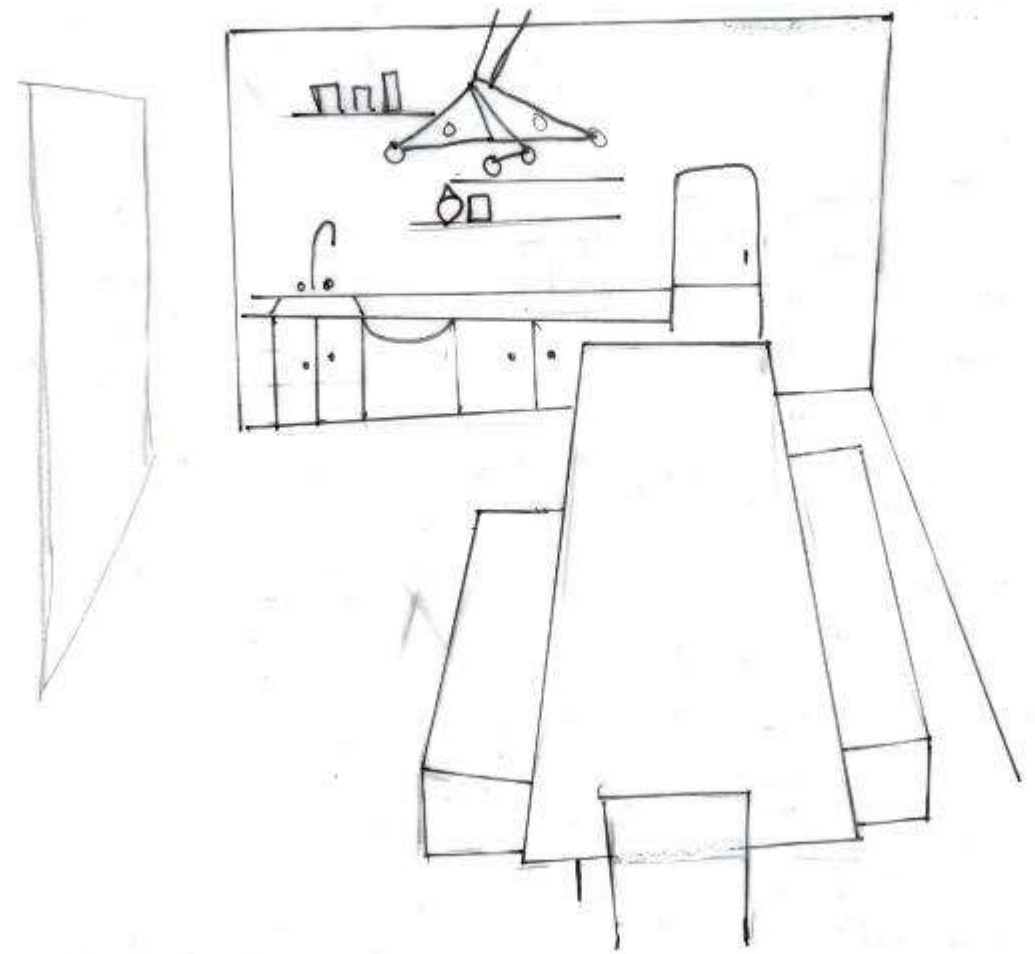


Perspectives

Exhibition

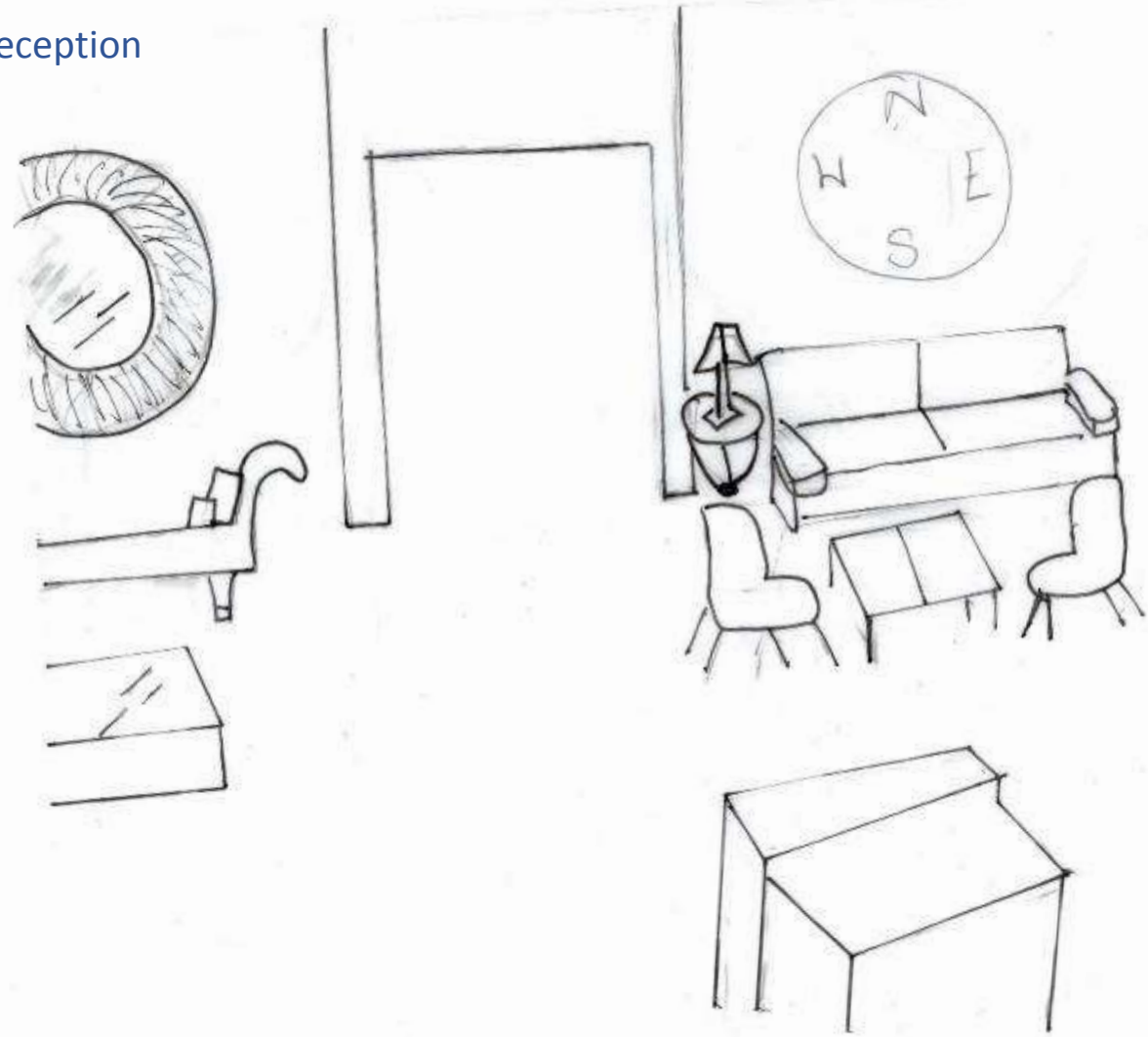


Pantry/ Storage



Perspectives

Reception



Open Work Area



Sketchup Scenes

Reception



Sketchup Scenes

Pantry/ Storage



Sketchup Scenes

Exhibition



Sketchup Scenes

Upper Floor Space



Concept Statement/Inspiration

- This newly renovated space was driven by the historic landmark and artifacts previously accompanied by this space.
- This previously run Tobacco Warehouse held a lot of notable examples of Art Deco.
- This space greatly incorporates these styles of art deco with an industrial and rustic spin which is what drew in it'.
- It's accents give the realism of the dated warehouse and buildings in which dominated during the 1900's-1950's era with the use of stone and dated metals and lots of warm woods.
- It is accompanied by cool colors that pop this space.
- It ties in the desired and modern coastal feel with it's bright color choices.



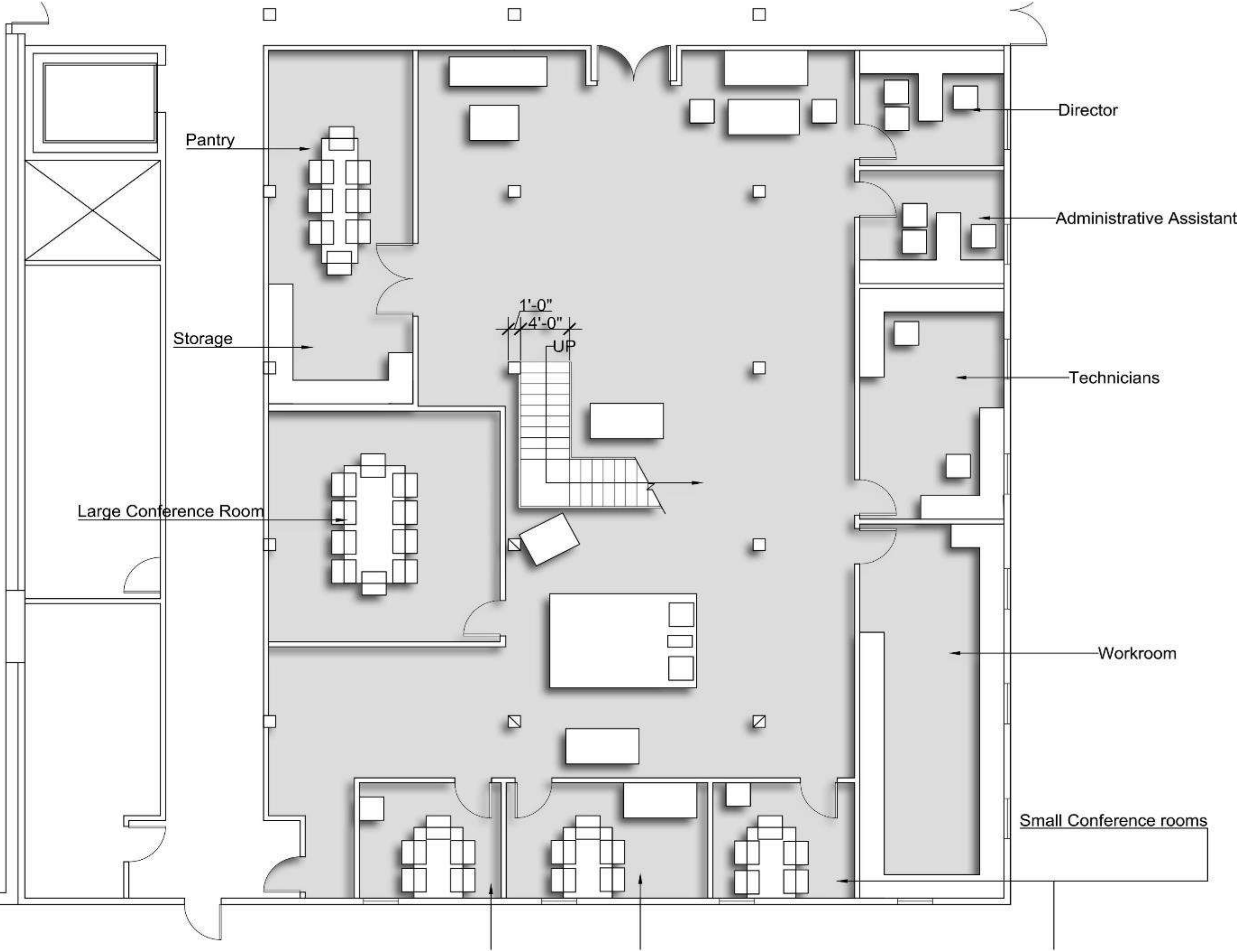
Architectural Finishes, Furniture, and Finishes

- The historical precedent found within this interior architecture highlights the previous buildings that made up Greenville during this industrial time.
- These include the rusted cream trim along the top and bottom of the glass wall viewed from the exhibition space. As well as the use of stone throughout the reception area.
- Such rustic/ industrial material gives a historic background to the space.
- The furniture was a mixed style between Art deco and rustic.
- Art deco's historic elements were found throughout Greenville during the time the warehouse previously operated and in other buildings surrounding.
- Such style include bolds geometric forms found in some of the accents such as the coffee tables, clock, rugs and other decorative features.
- The teal finishes painted on some of the walls give this space a coastal southern pop as it is paired with the distressed wood flooring.
- This historic looking wood is put along some walls as vertical paneling previously found in many southern coastal homes.
- Metal chairs and copper tables for more historic materials.



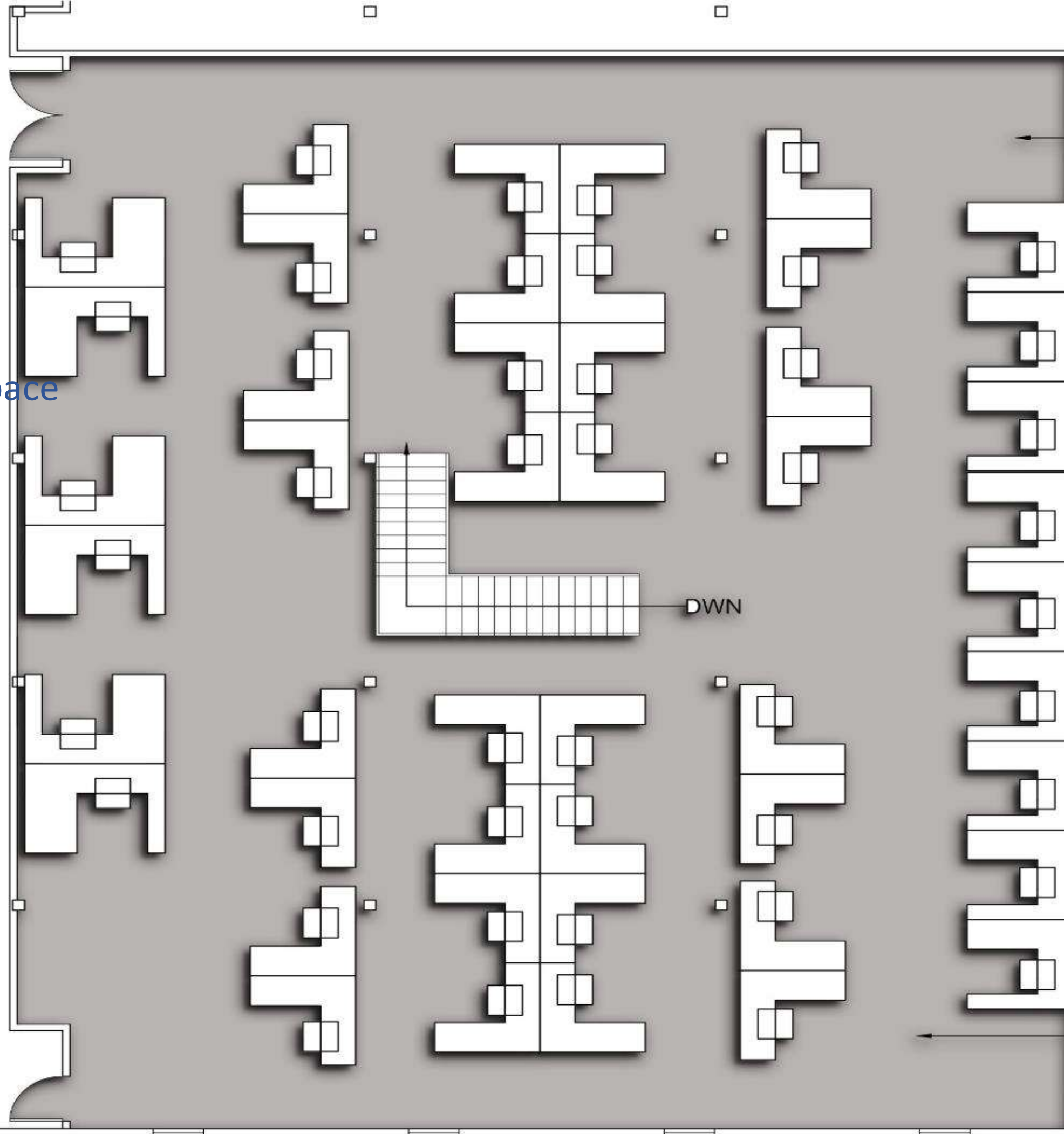


Final plan





Upper Floor Space
Final Plan



Center Front Desk Space

Back Center Desk Space