

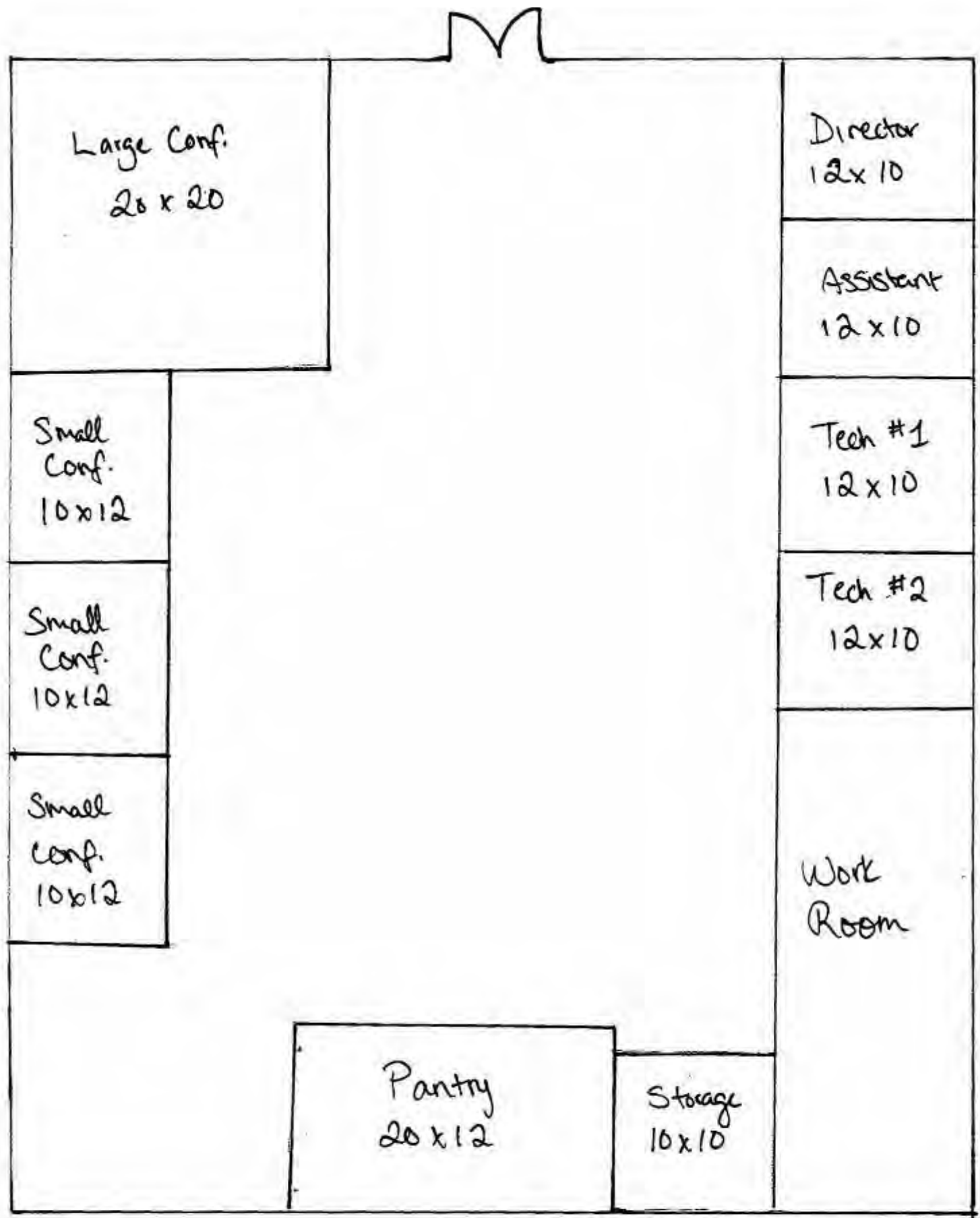
# Portfolio 2



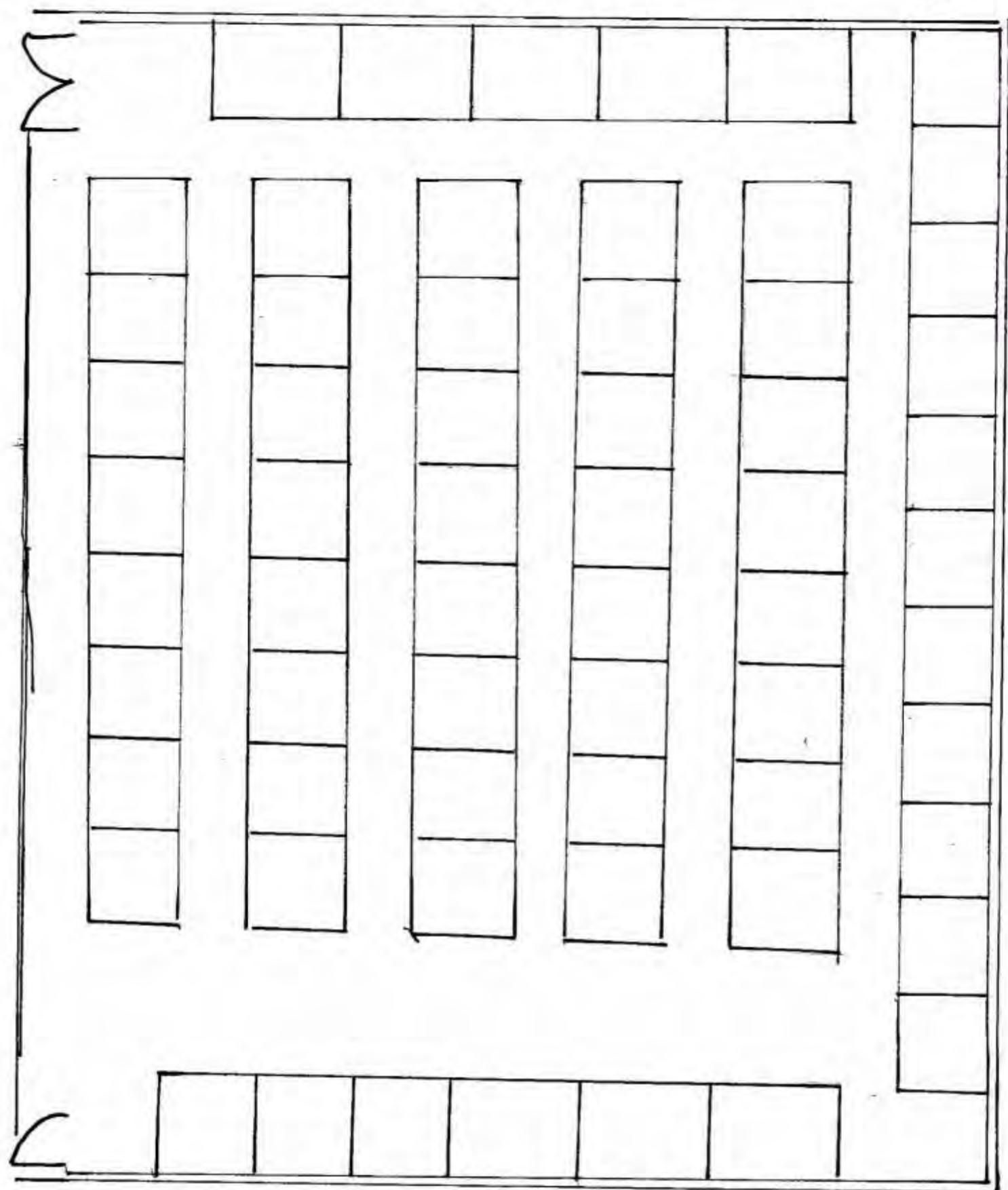
## Jennifer Guzman

Office Space    IDSN 2102    Fall 2017

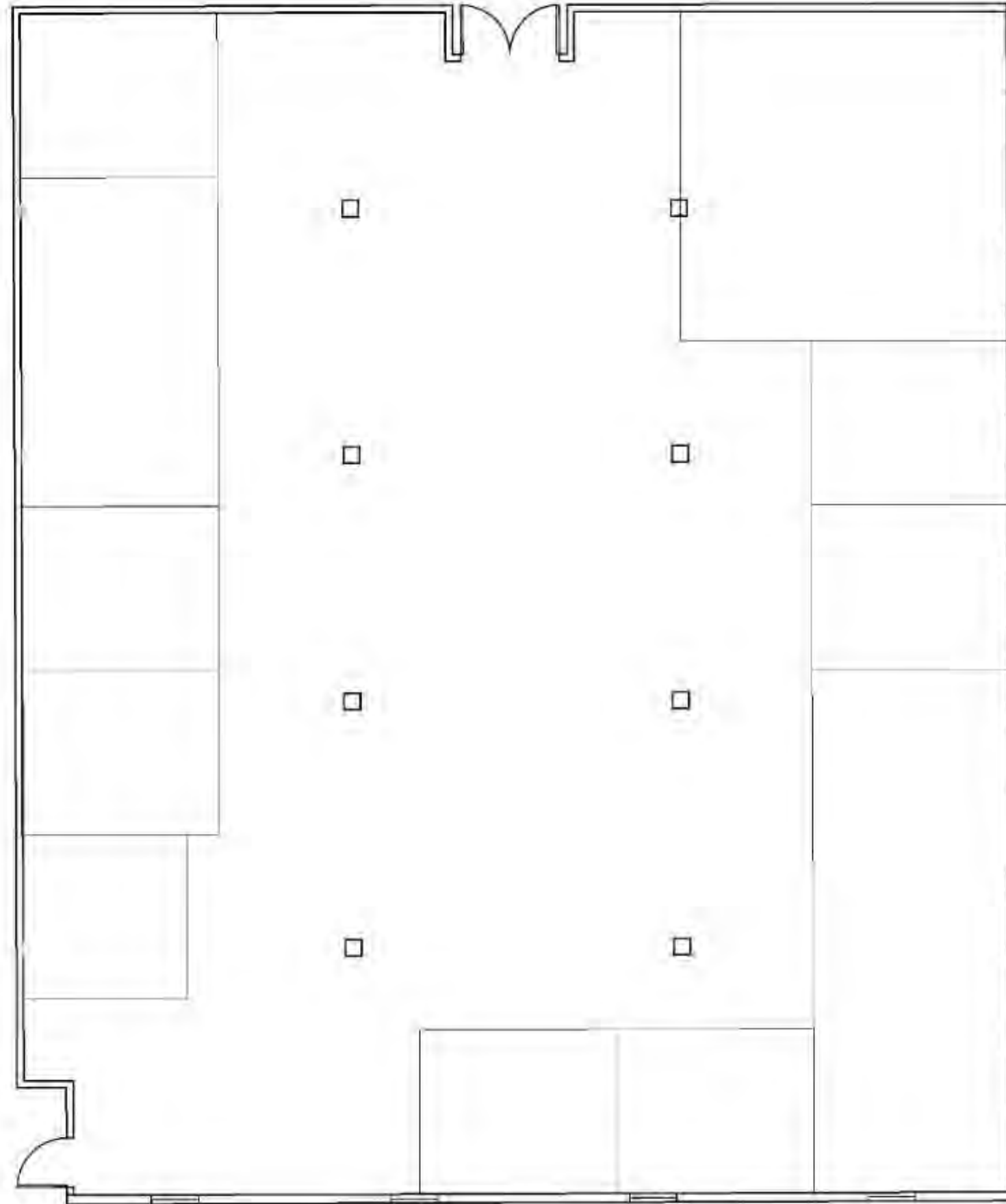
# Space Planning: Bottom Floor (1)



# Space Planning: Top Floor (1)

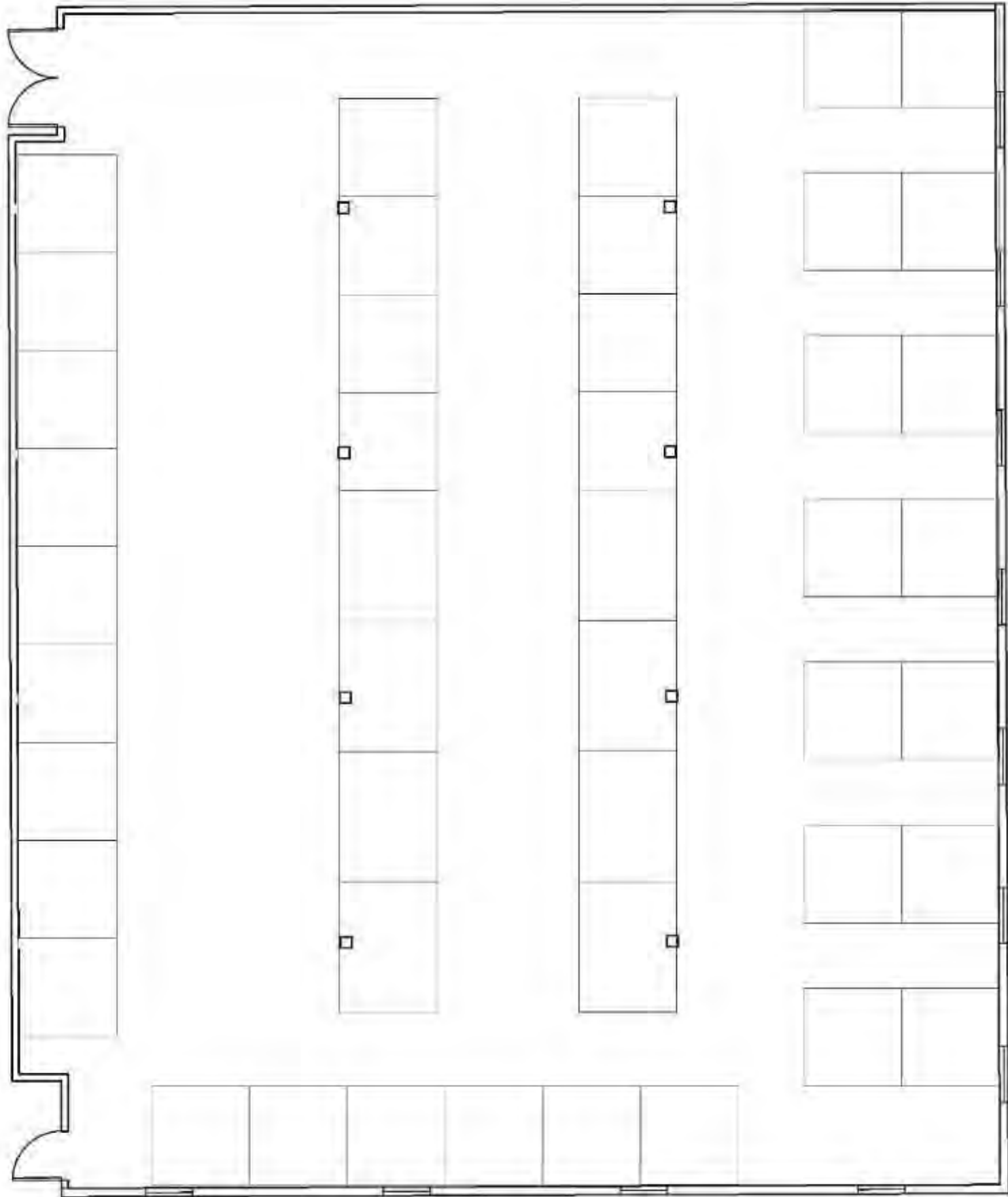


# Space Planning: Bottom Floor (2)



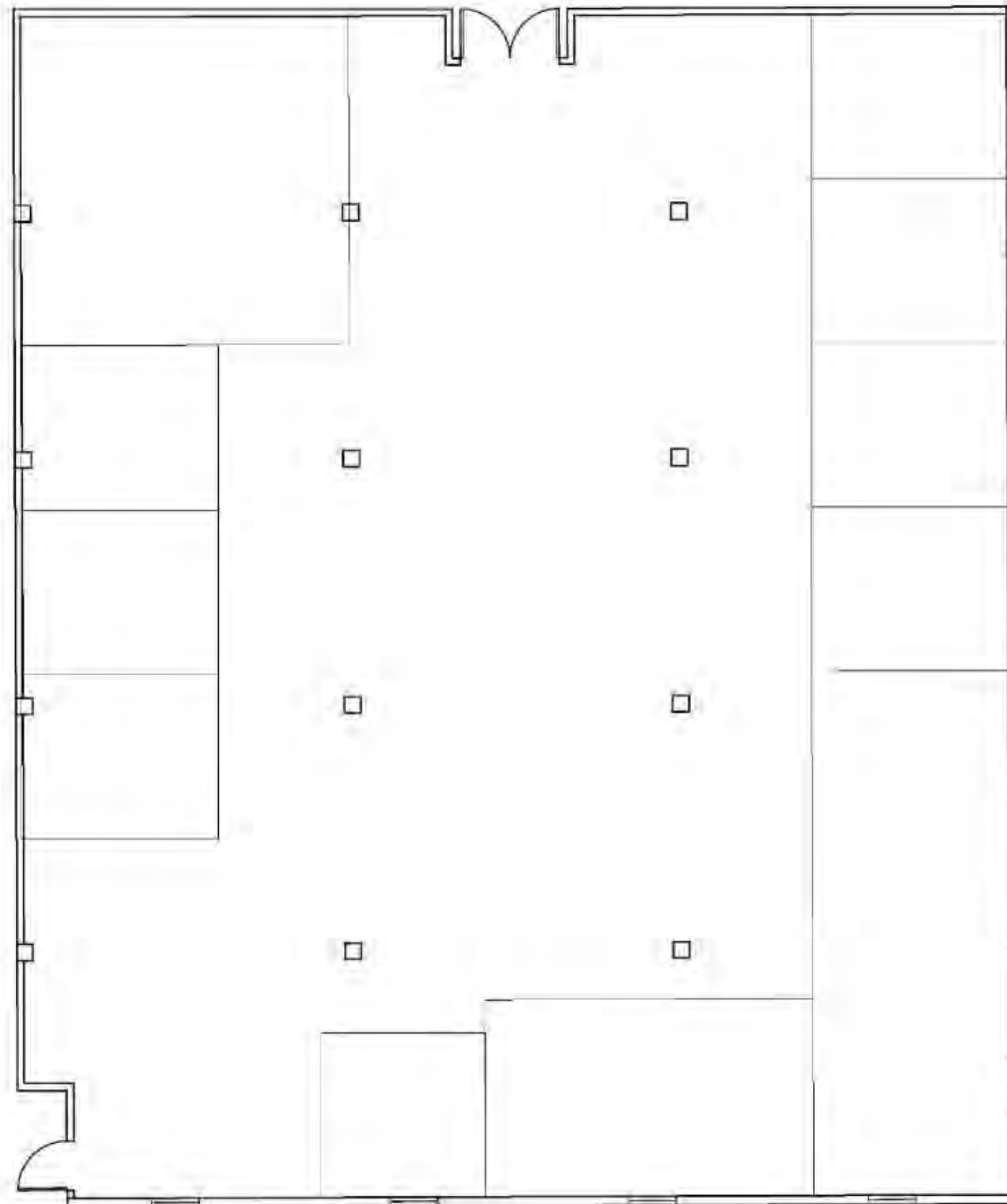
1/8" = 1'0"

# Space Planning: Top Floor (2)



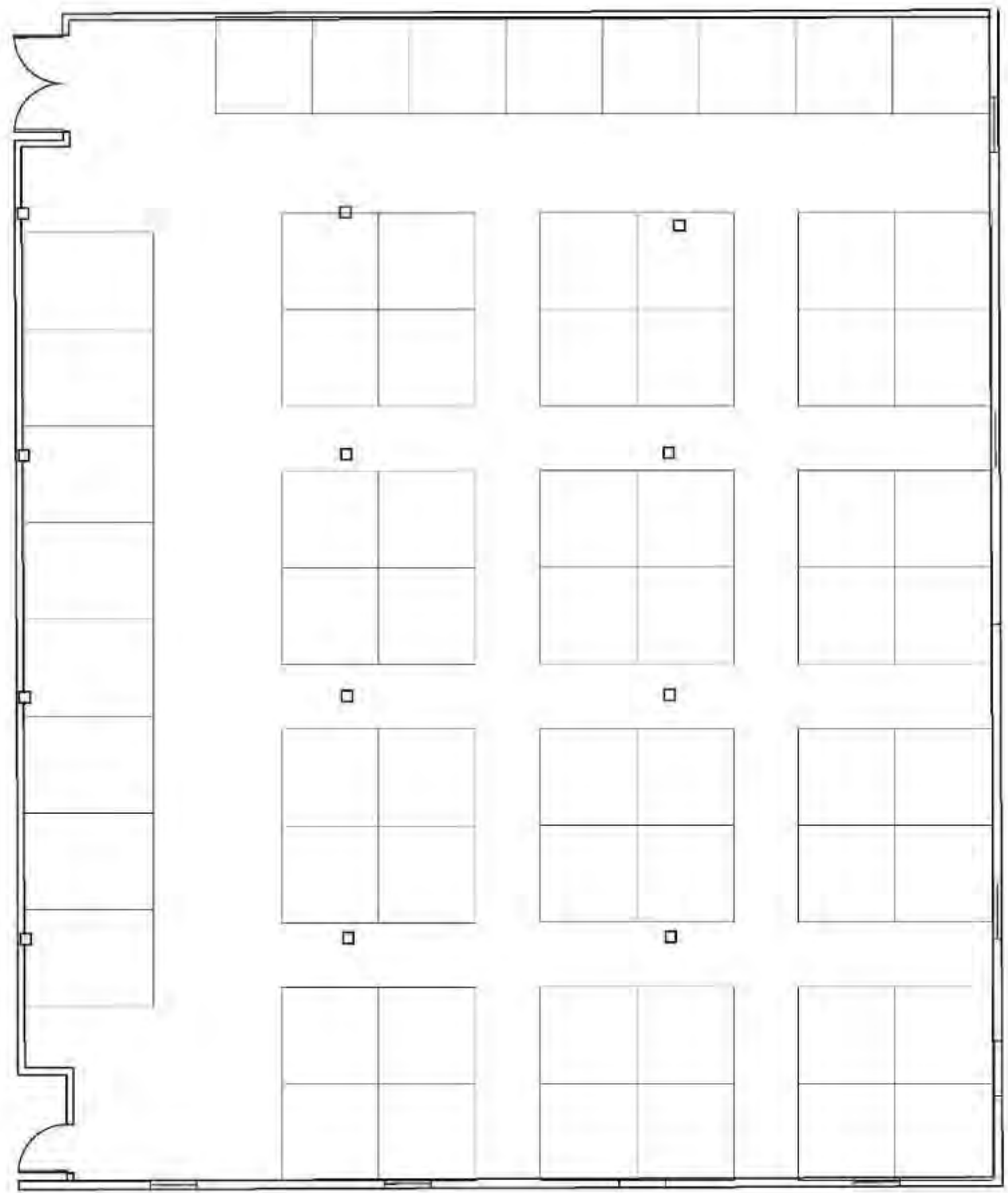
1/8" = 1'0"

# Space Planning: Bottom Floor (3)



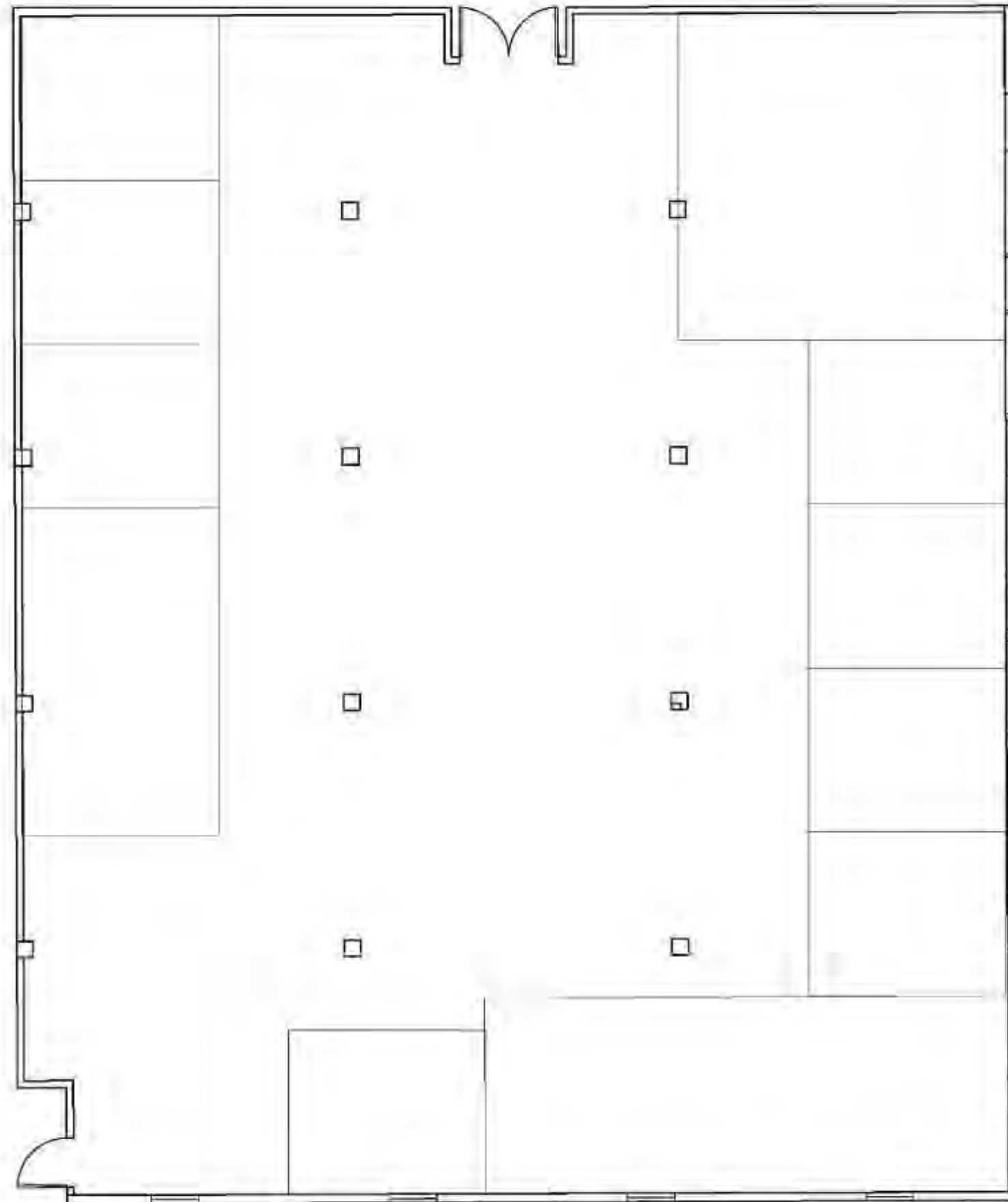
$1/8'' = 1'0''$

# Space Planning: Top Floor (3)



1/8" = 1'0"

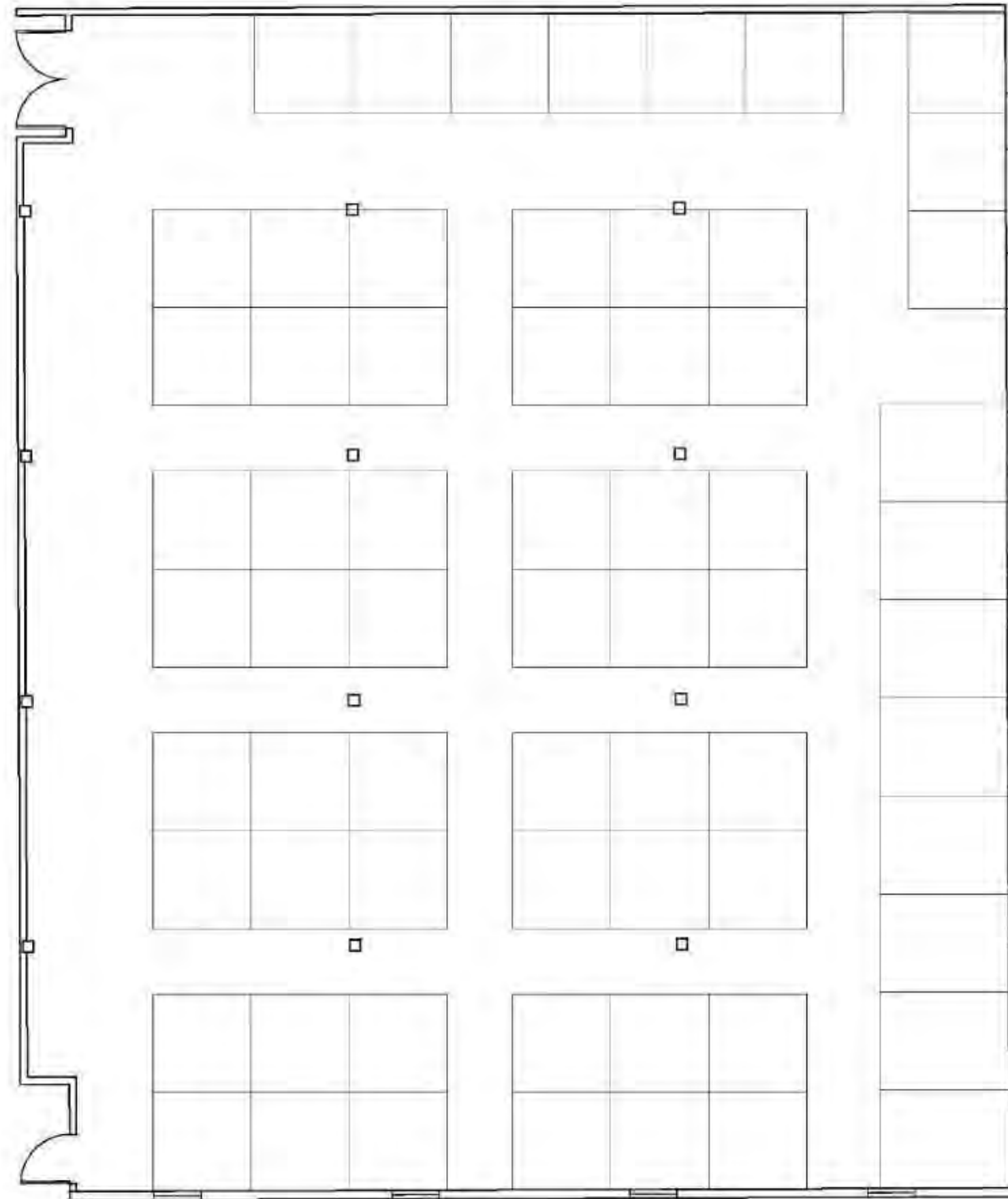
# Space Planning: Bottom Floor (4)



1/8" = 1'0"

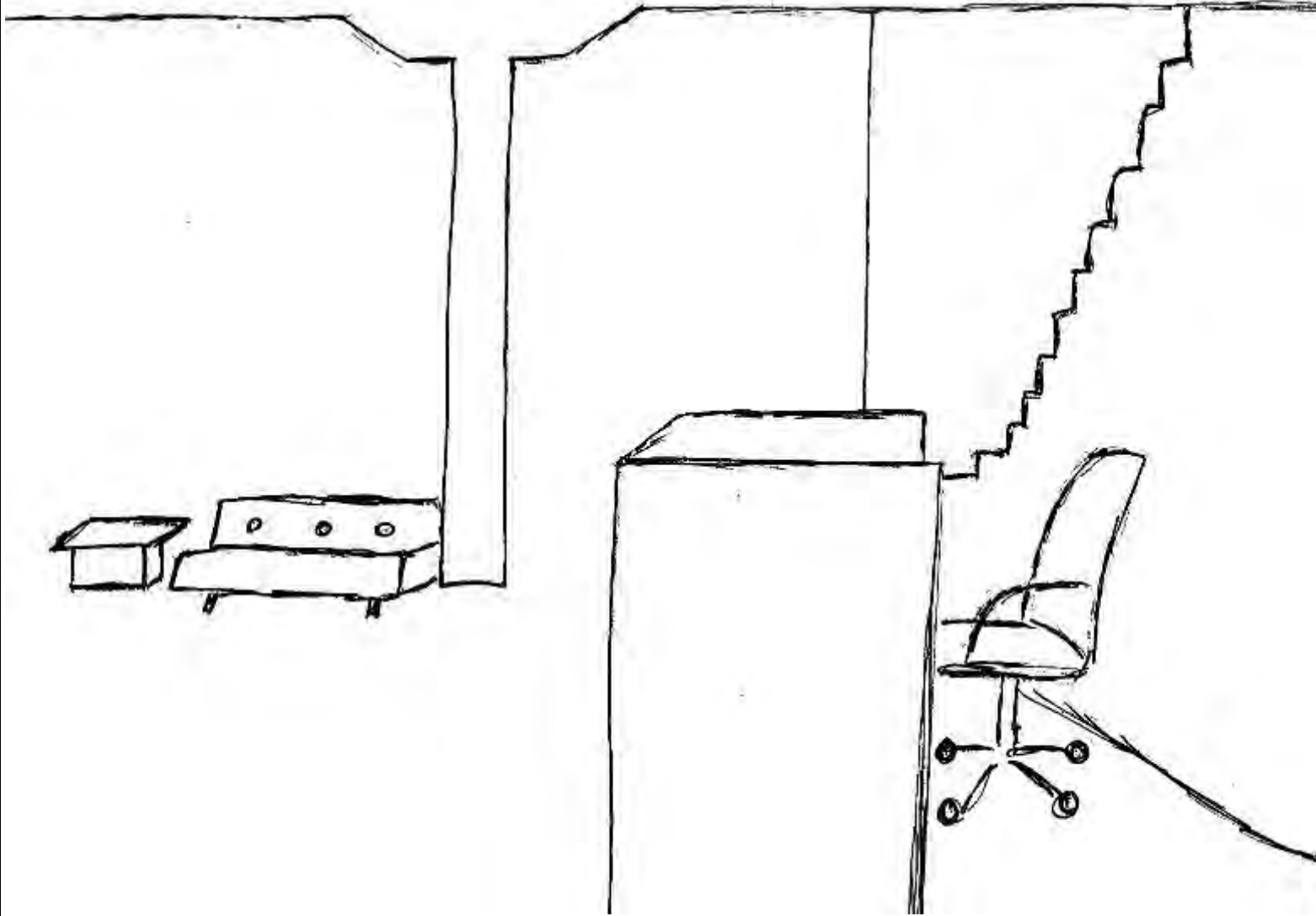


# Space Planning: Top Floor (4)

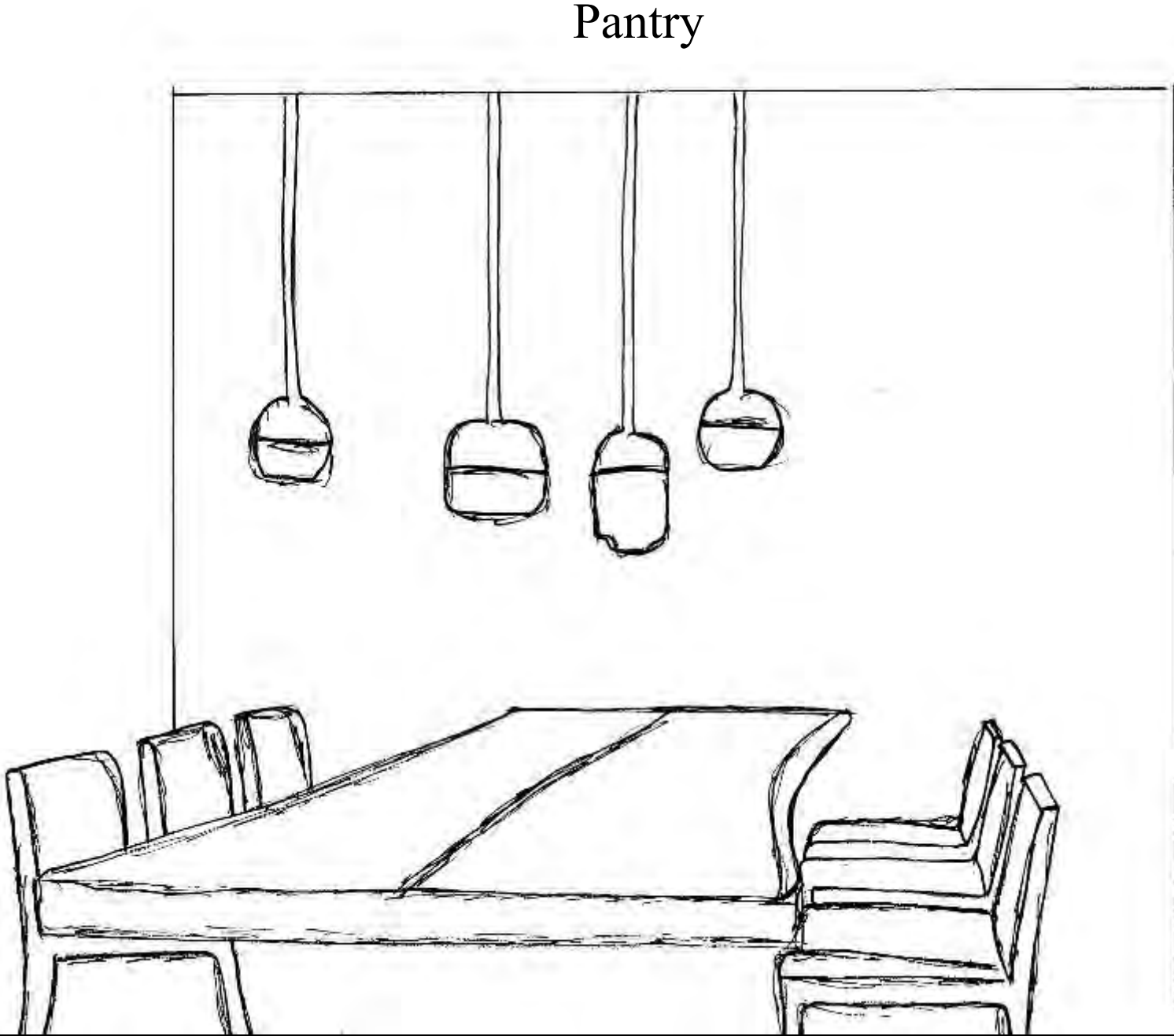


1/8" = 1'0"

# Sketch Perspectives

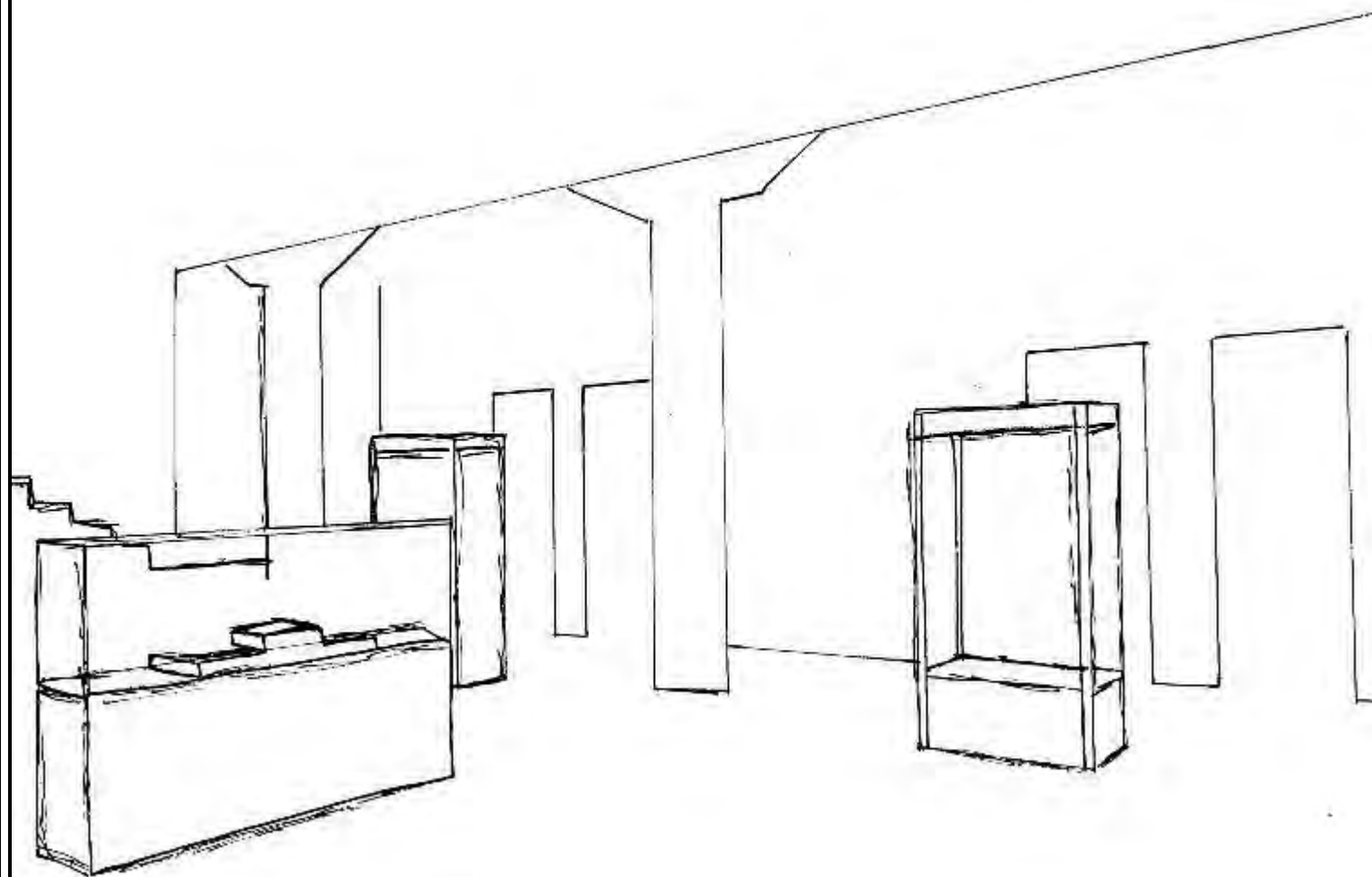


Reception

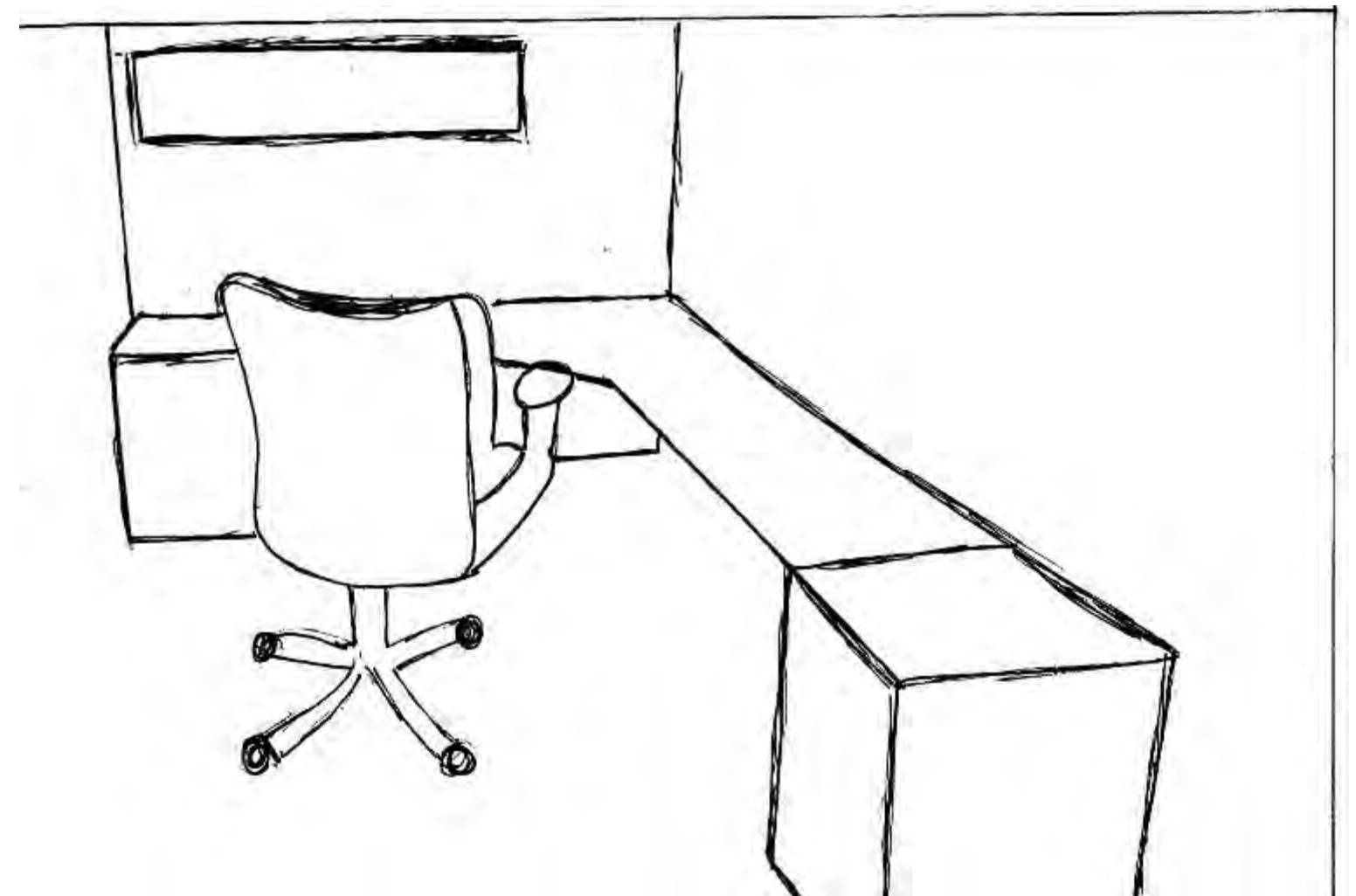


Pantry

# Sketch Perspectives



Exhibition



Workstation

## SketchUp Perspectives: Reception



# SketchUp Perspectives: Reception



# SketchUp Perspectives: Pantry



## SketchUp Perspectives: Pantry



## SketchUp Perspectives: Exhibition





# SketchUp Perspectives: Exhibition



## SketchUp Perspectives: Workstations

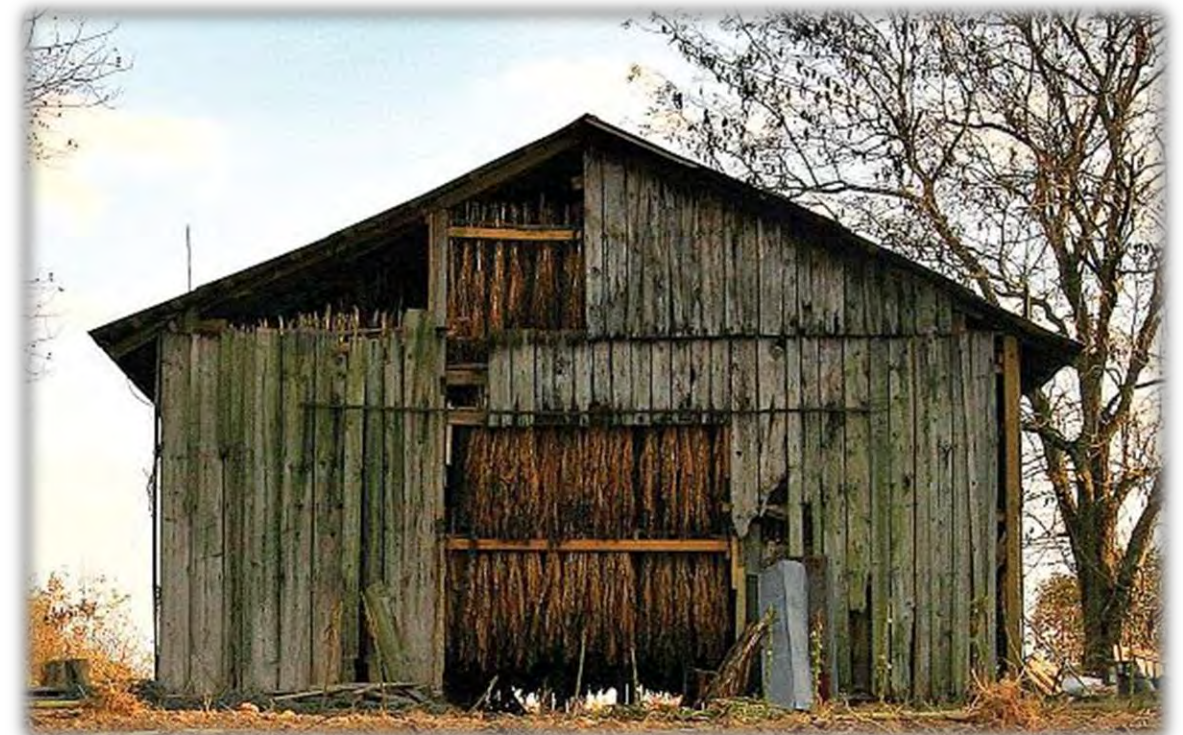


## SketchUp Perspectives: Workstations



## Concept Statement/Inspiration Images

- The Gateway Center is designed to reflect the different industries and forces that helped form the city of Greenville, NC. Greenville got its name from Nathanael Greene who weakened British forces in a series of battles during the Revolutionary War. Opening Greenville to the world, a new bridge was built over the Tar River that allowed steamboats along it. Having exposure to importing and exporting goods, Greenville expanded slowly but surely. Growth in tobacco picked up and Greenville became the biggest tobacco market in the state.
- The structure of the Gateway Center represents just that, the metals and grey colors represent the industrial tools used to continue expansion of the city, while the wooden finishes represents building and renewal from tobacco money adding new industries and work force to the city.

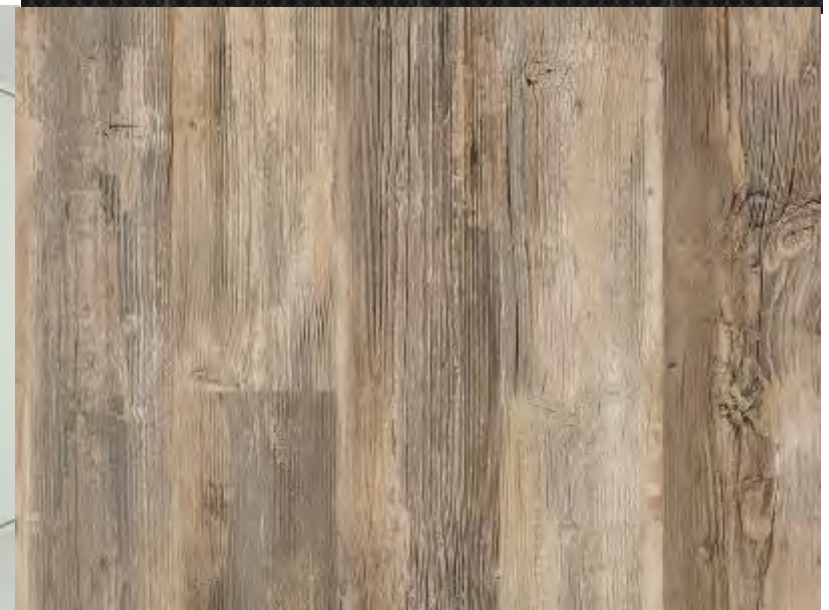




# Architectural Finishes, and Furniture and Finishes

Top Floor

The Gateway Center incorporates the building and renewal by using wooden finishes of different tones to represent the large growth in the tobacco industry, and displaying industrial tools by using different shades of grey throughout the space as well as adding neutral colors and the use of metal.

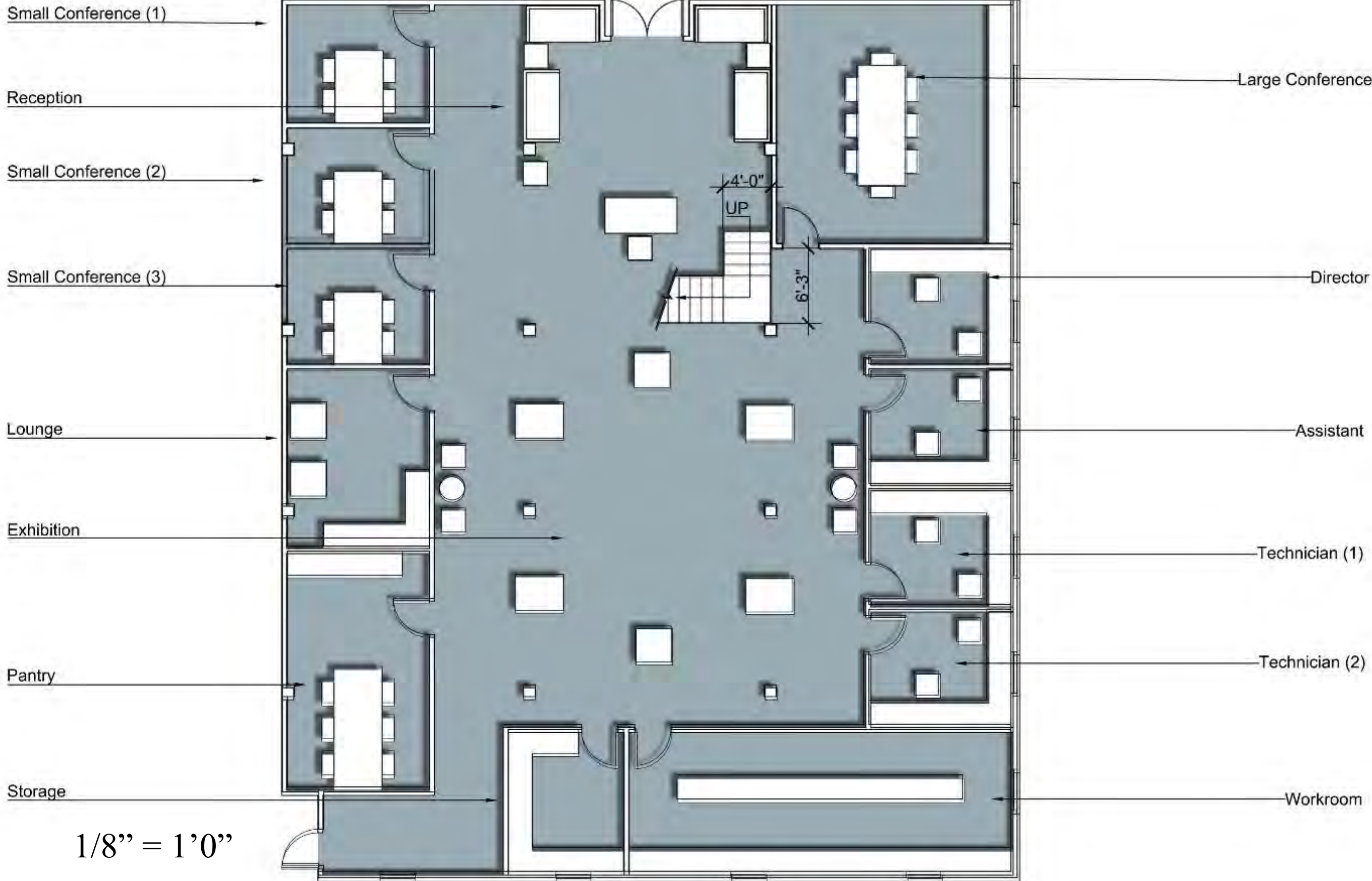


# Architectural Finishes, and Furniture and Finishes

## Bottom Floor



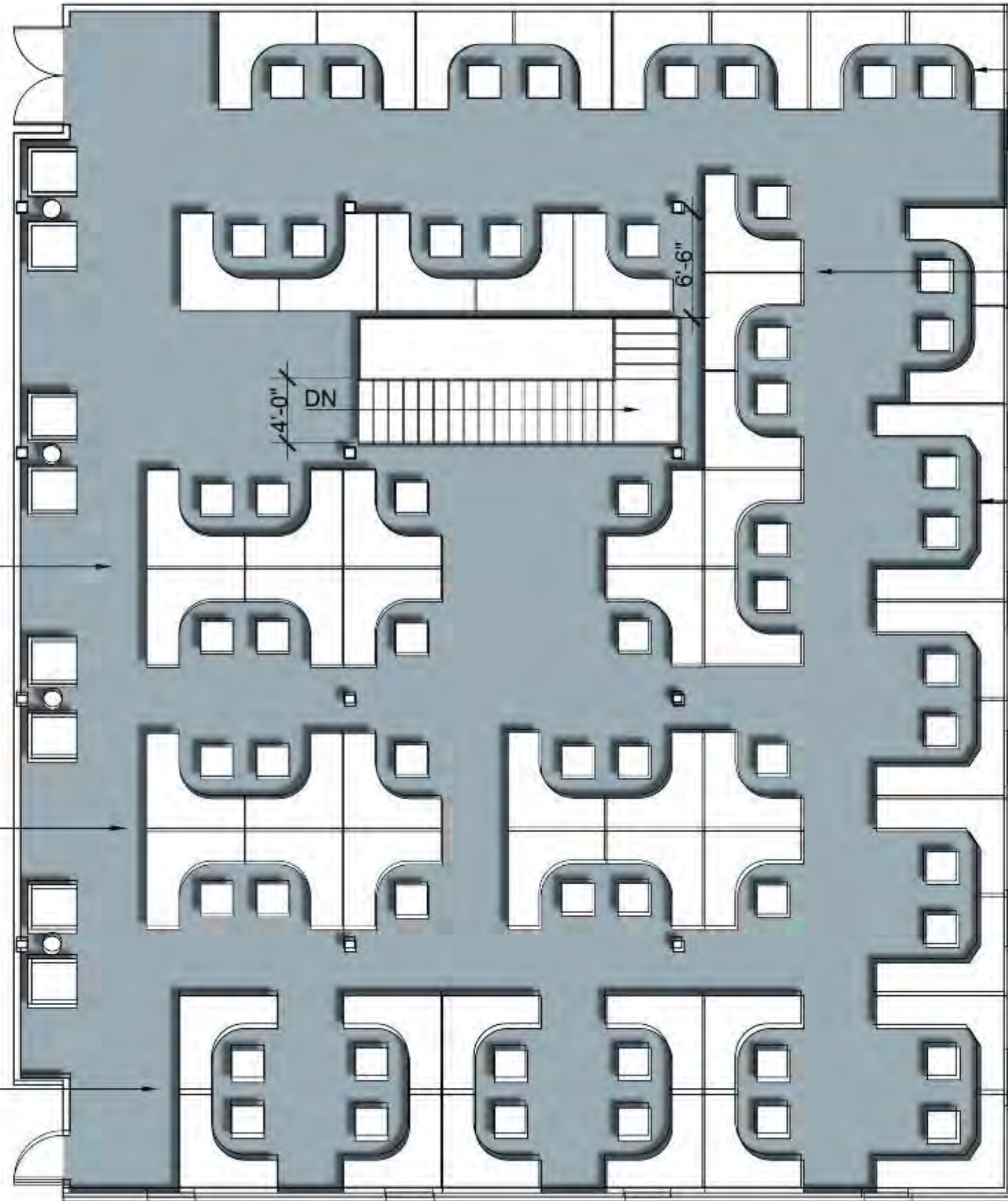
# Final Plan: Bottom Floor



1/8" = 1'0"



# Final Plan: Top Floor



Research Workstations (1)

Research Workstations (2)

Research Workstations (3)

Research Workstations (4)

Research Workstations (5)

Research Workstations (6)

$1/8'' = 1'0''$