

Amanda Hill

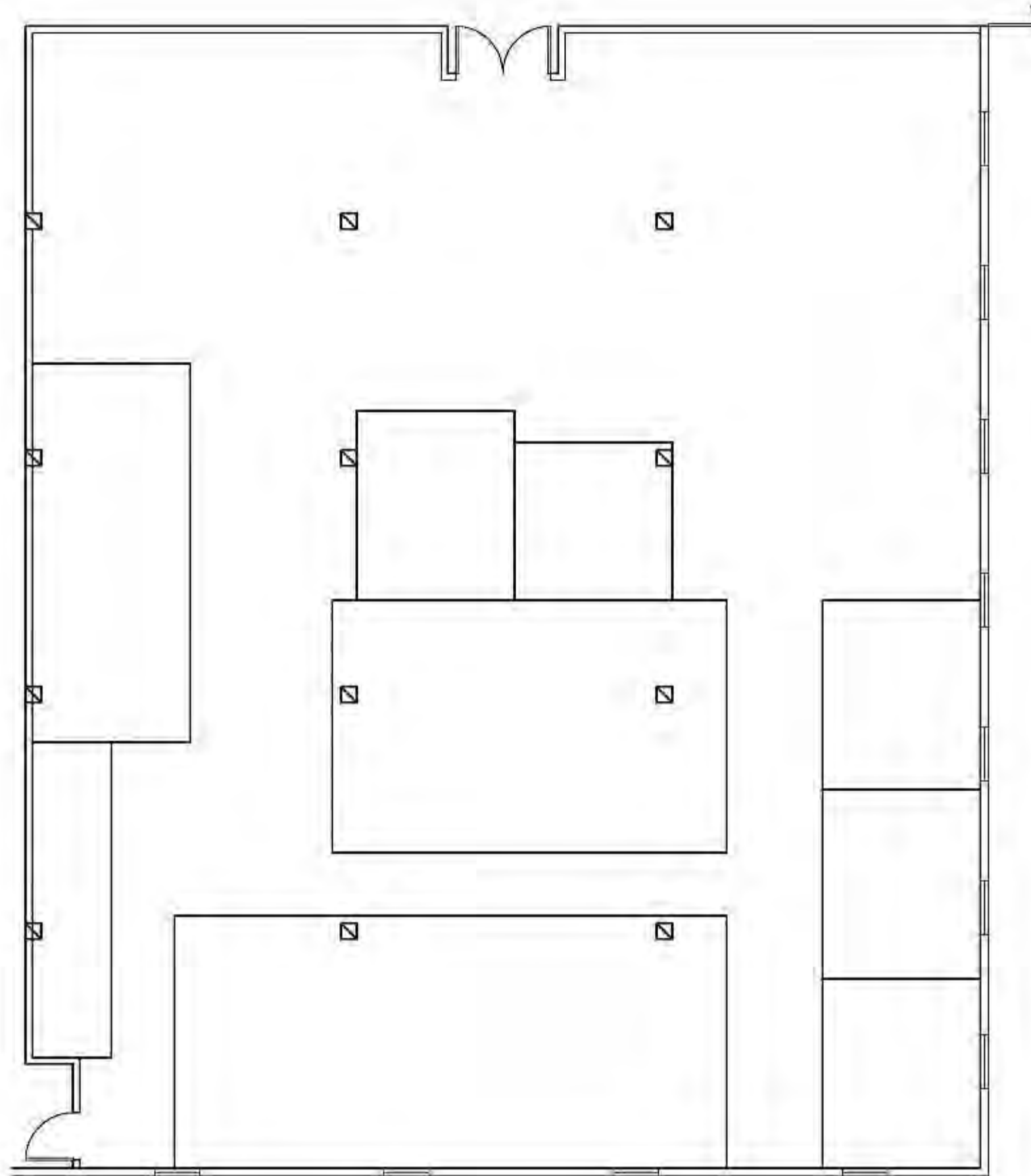
Portfolio 2 - Schematic Design

Professor Charles Gustina

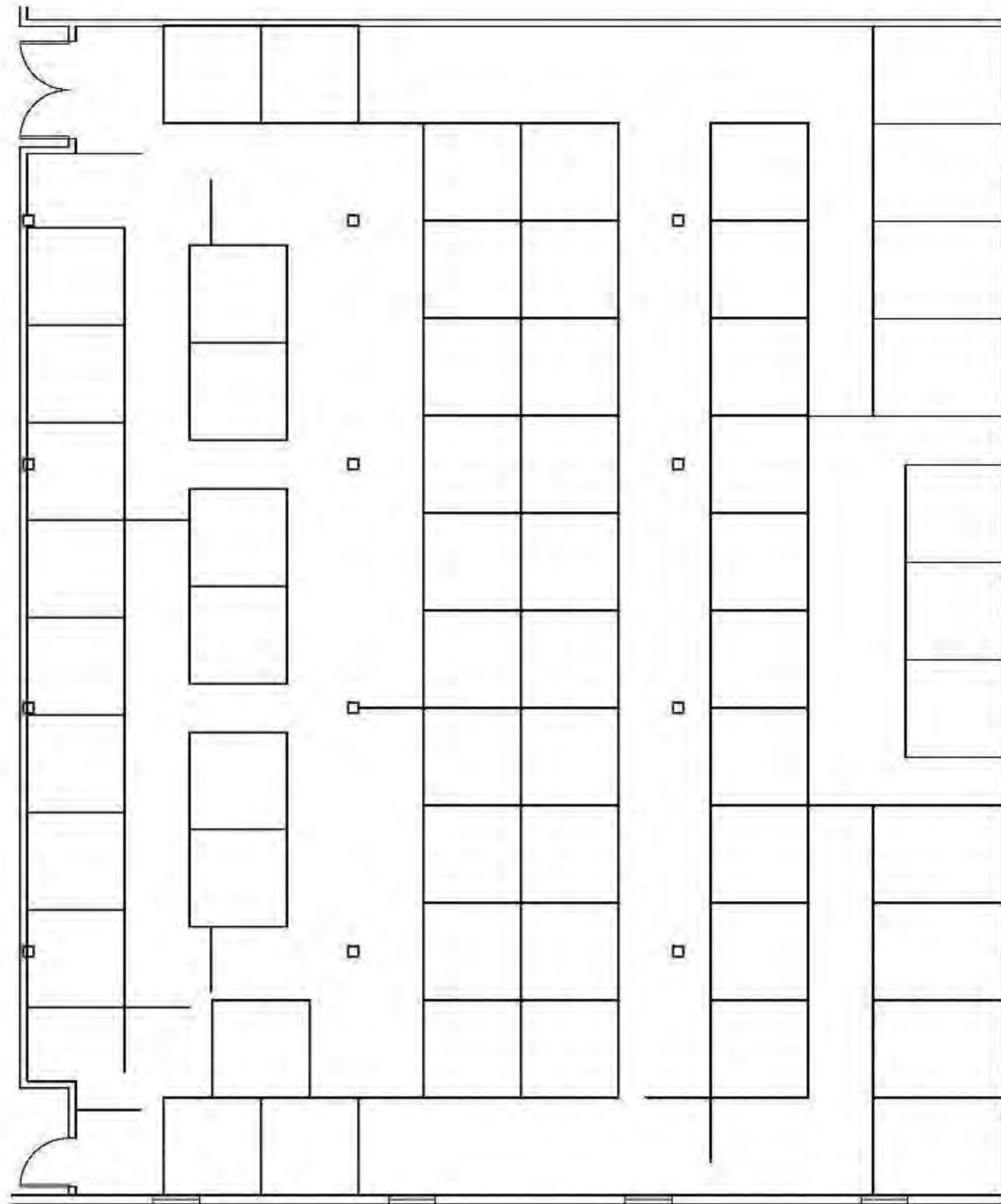
IDSN 2102 - Fall 2017



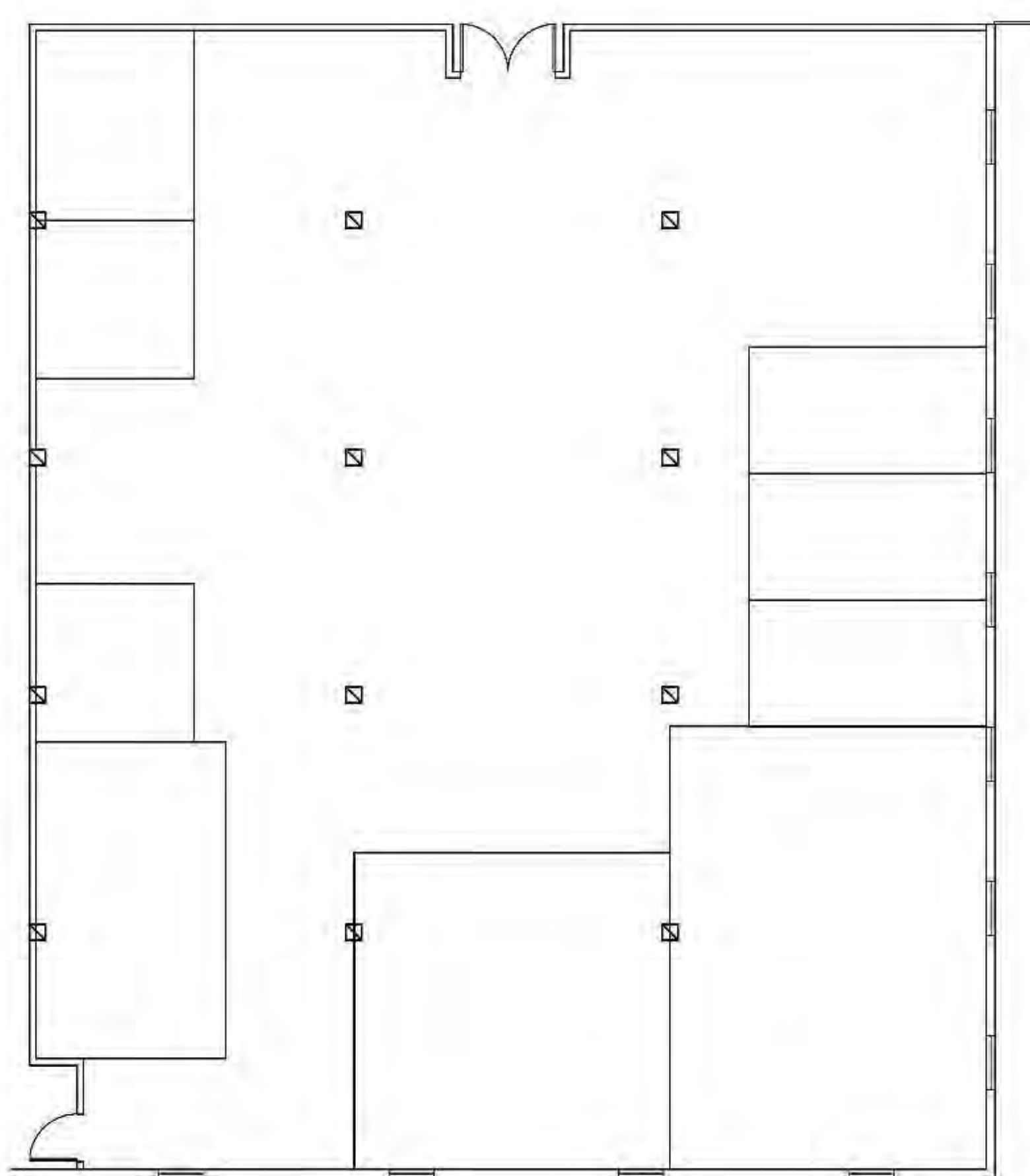
Space Planning
Sketches



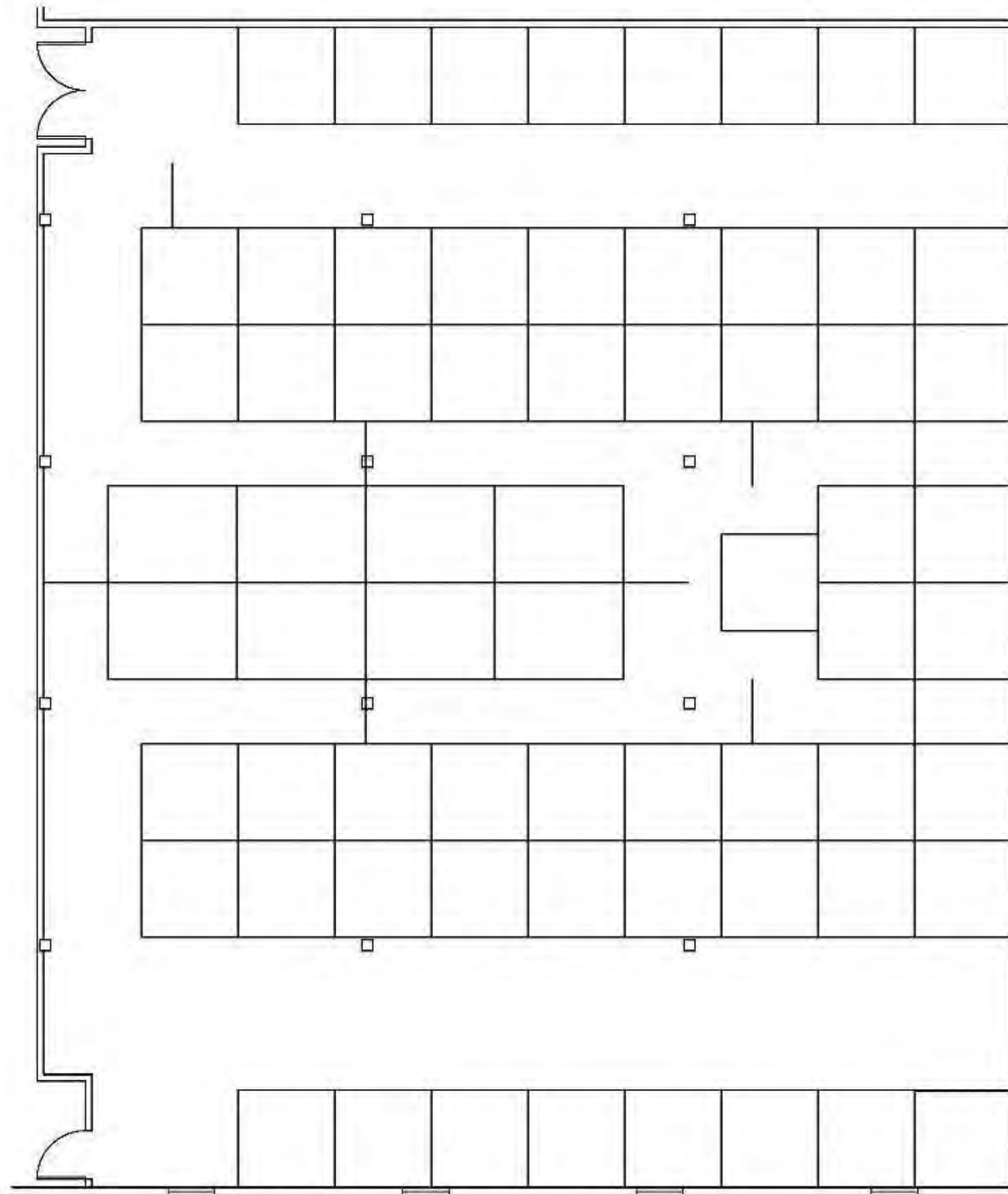
Space Planning
Sketches



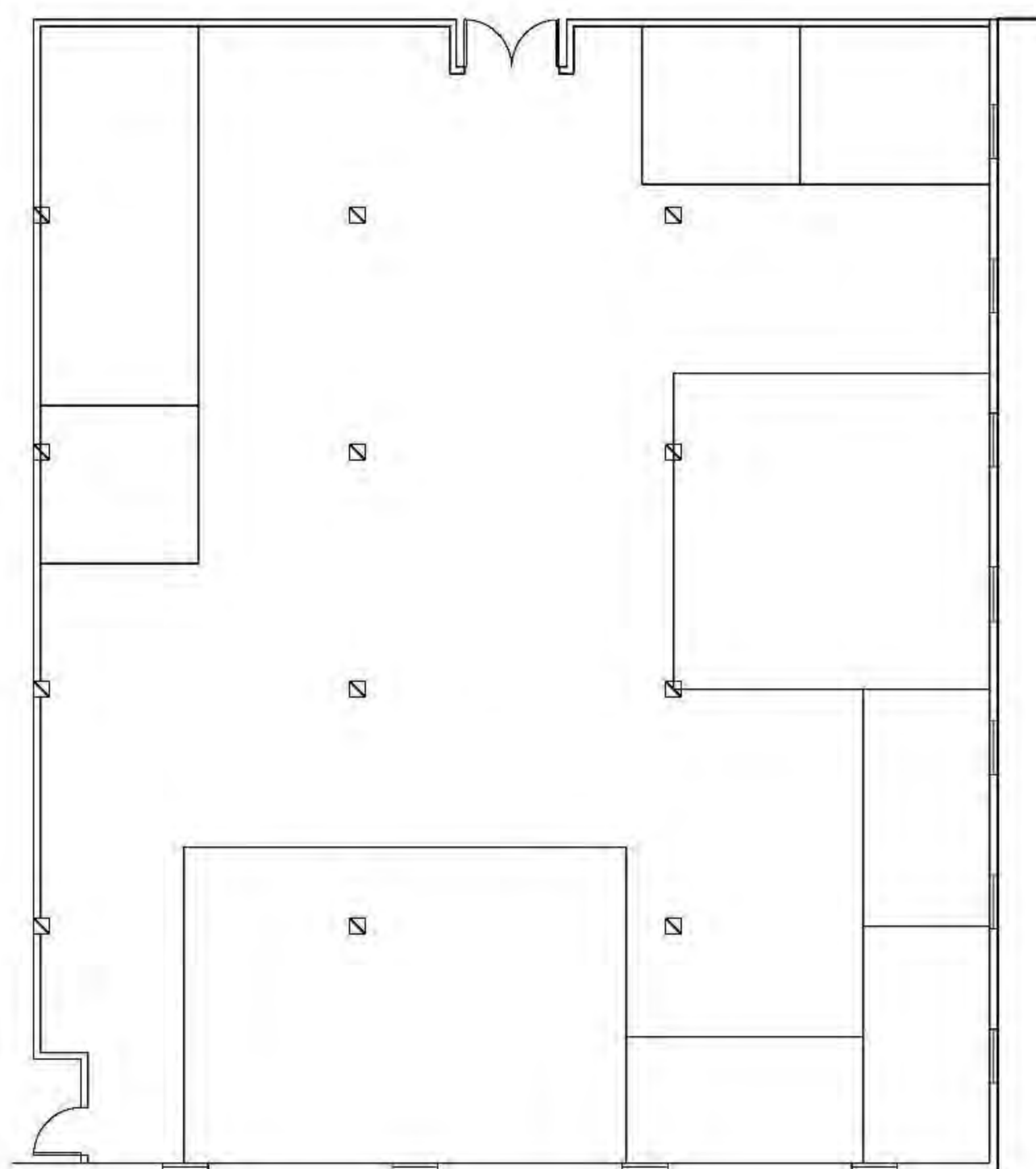
Space Planning
Sketches



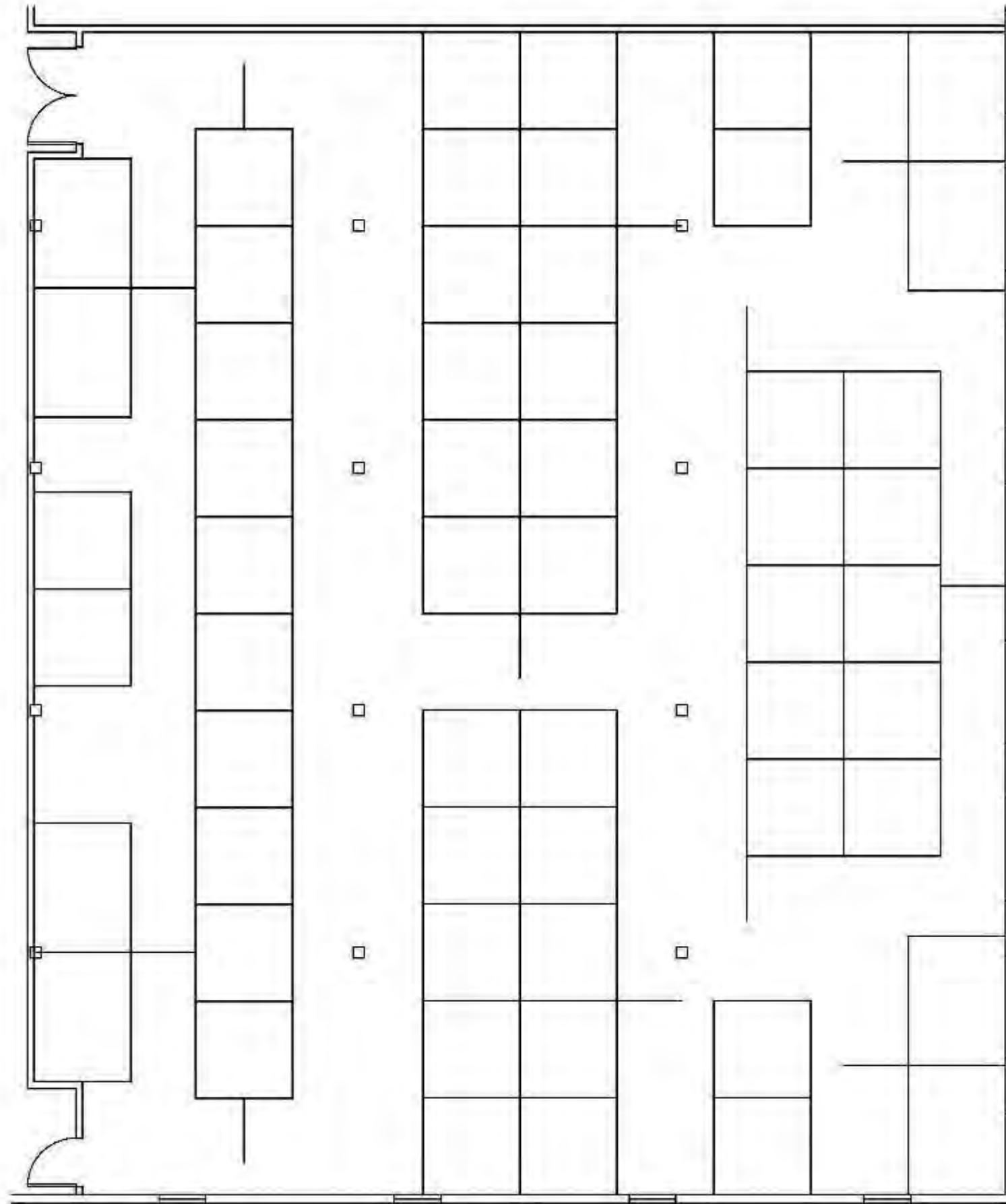
Space Planning
Sketches



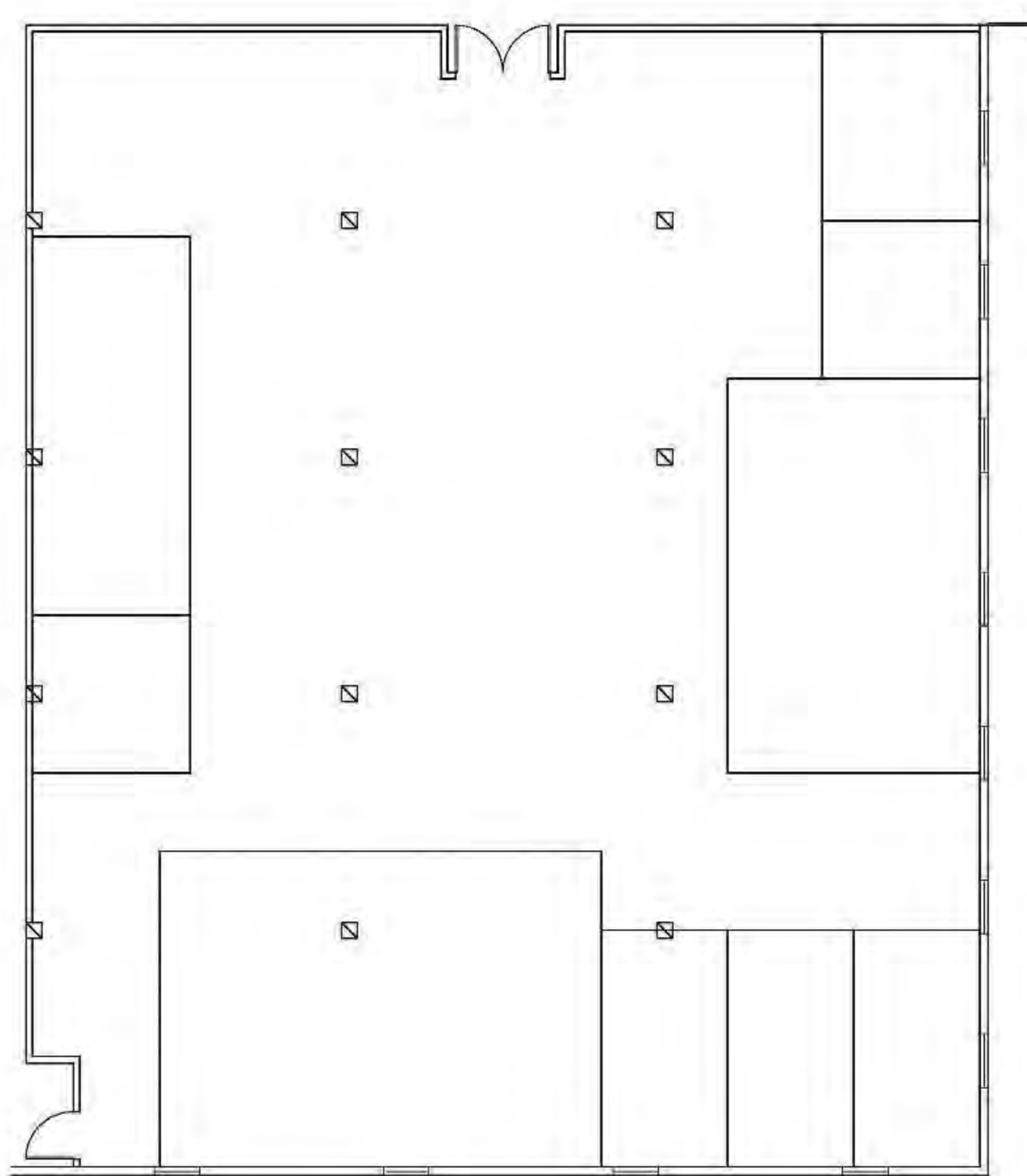
Space Planning
Sketches



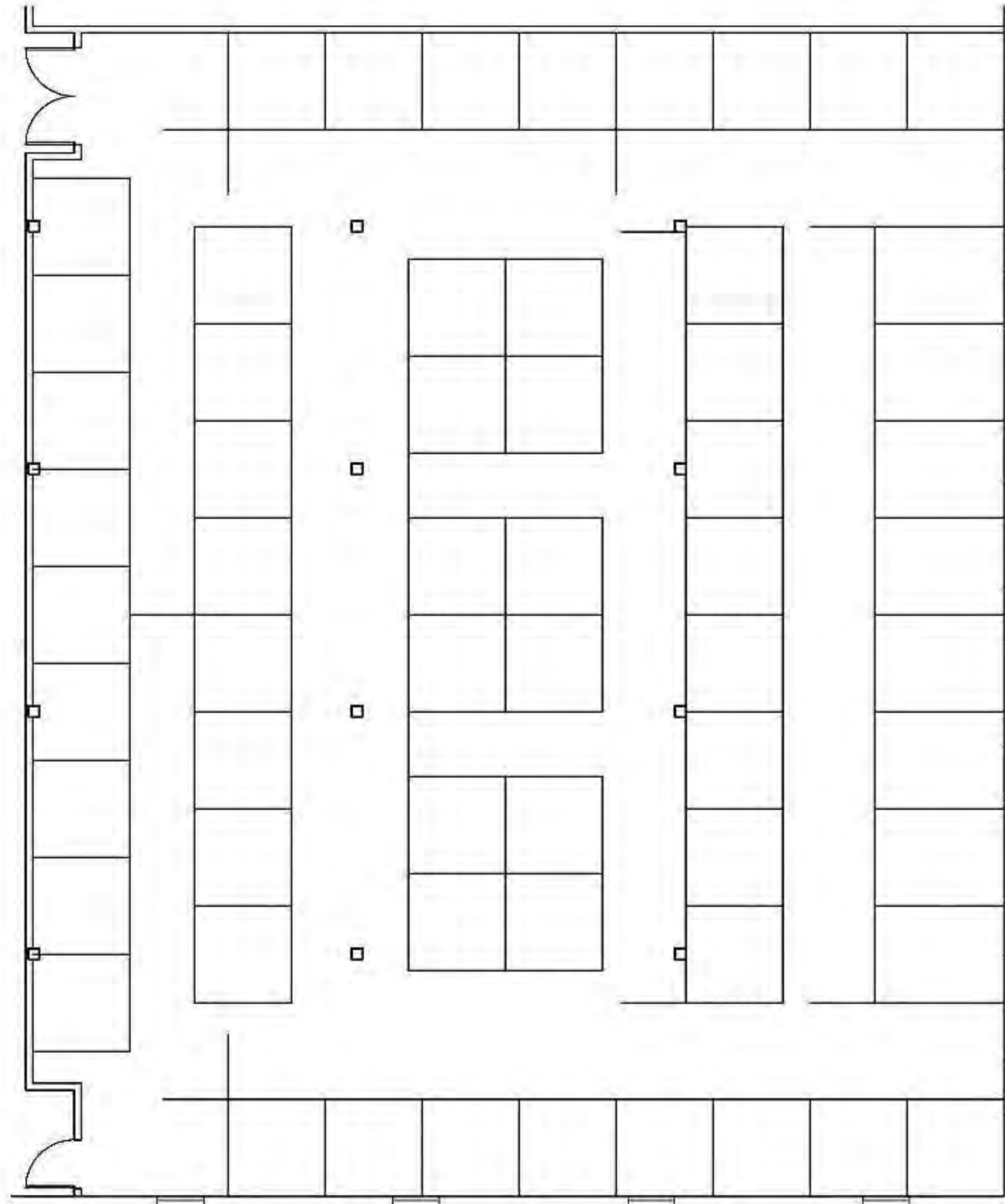
Space Planning
Sketches



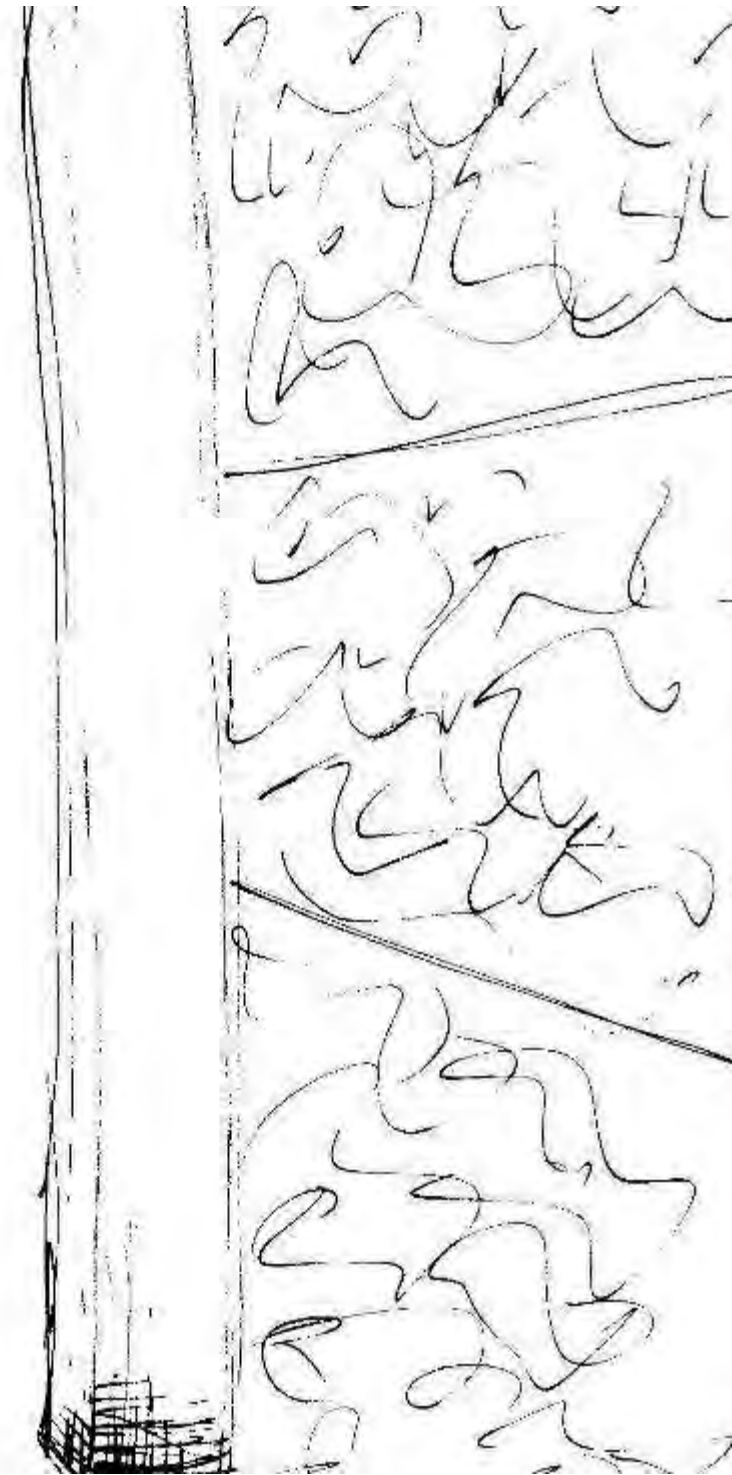
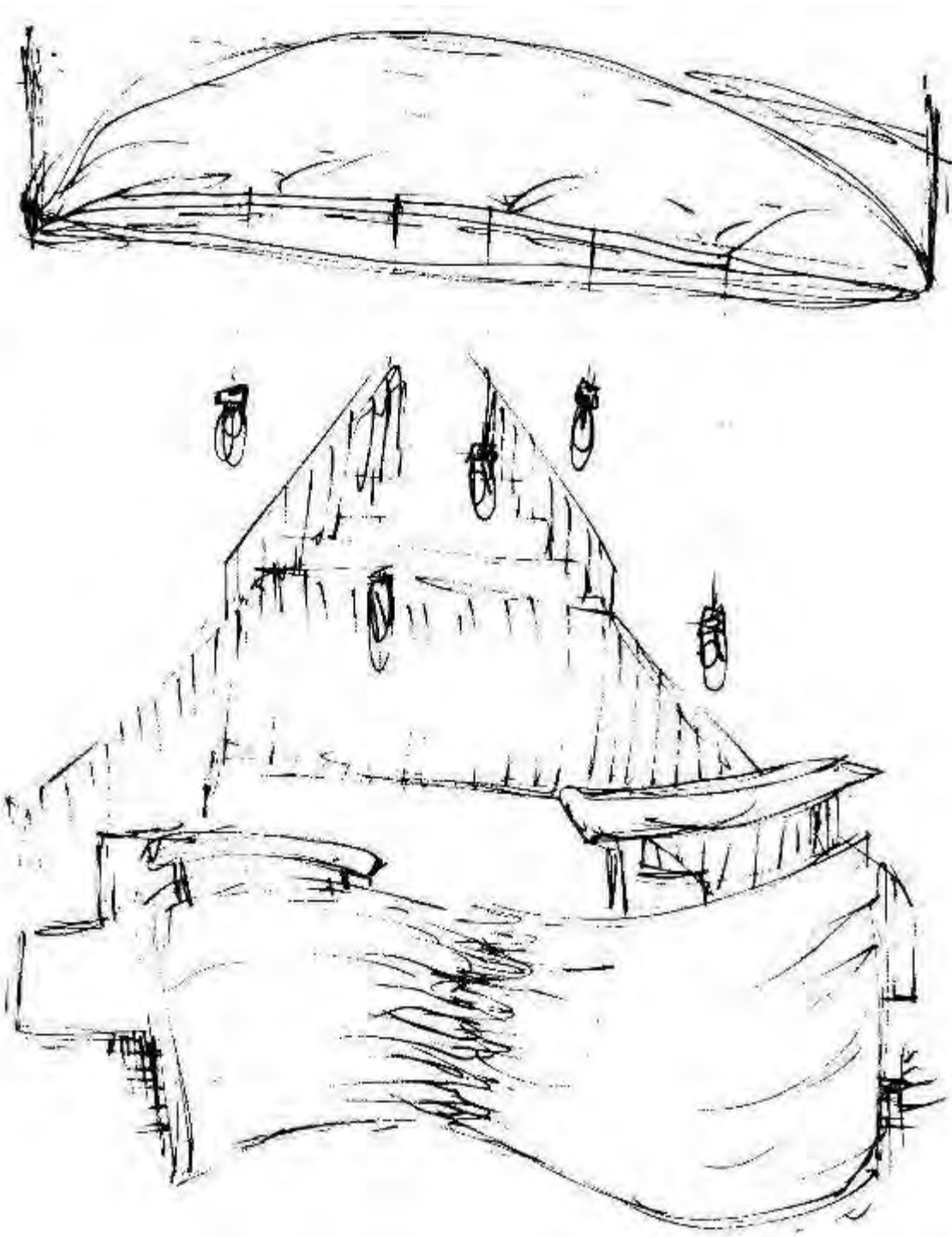
Space Planning
Sketches



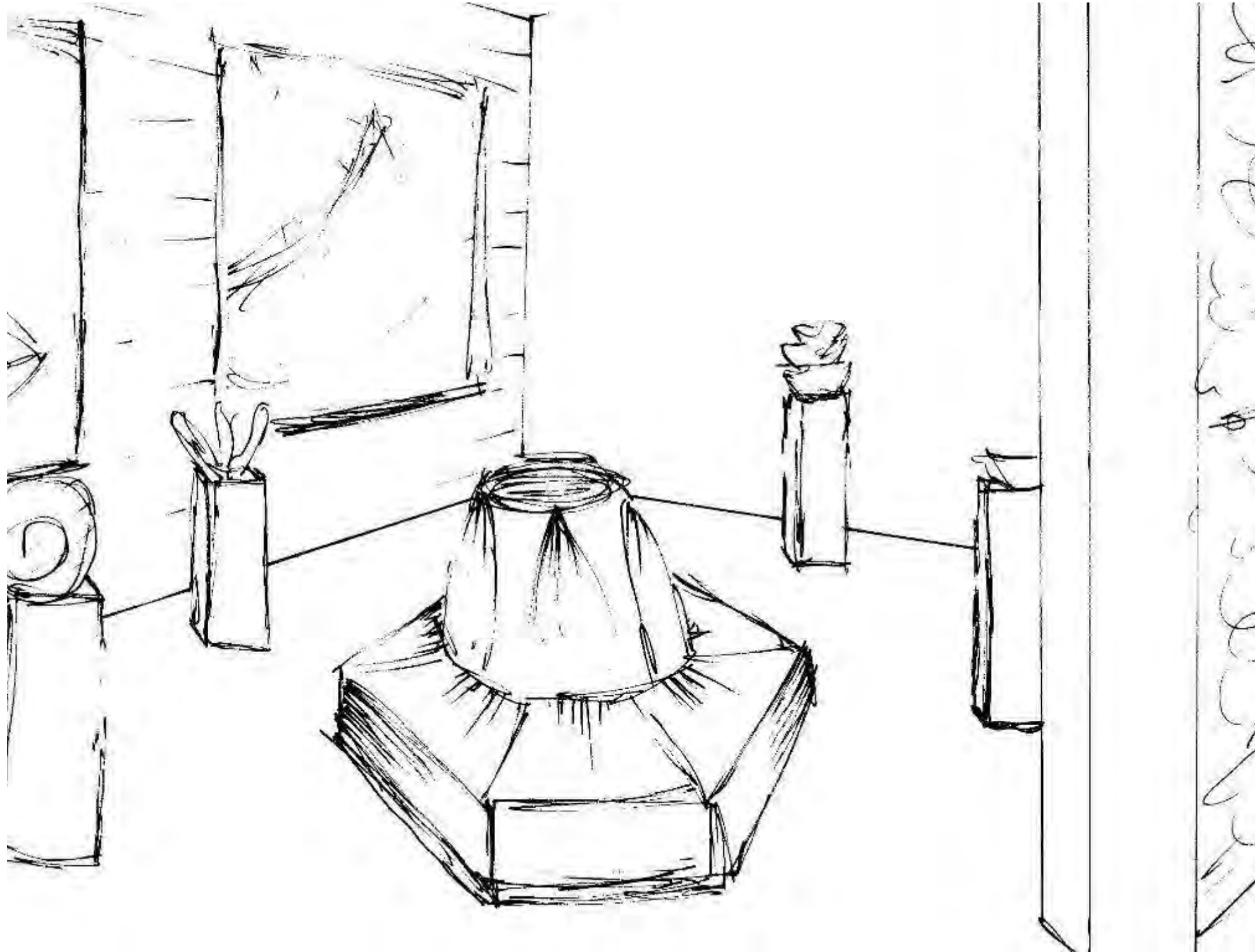
Space Planning
Sketches



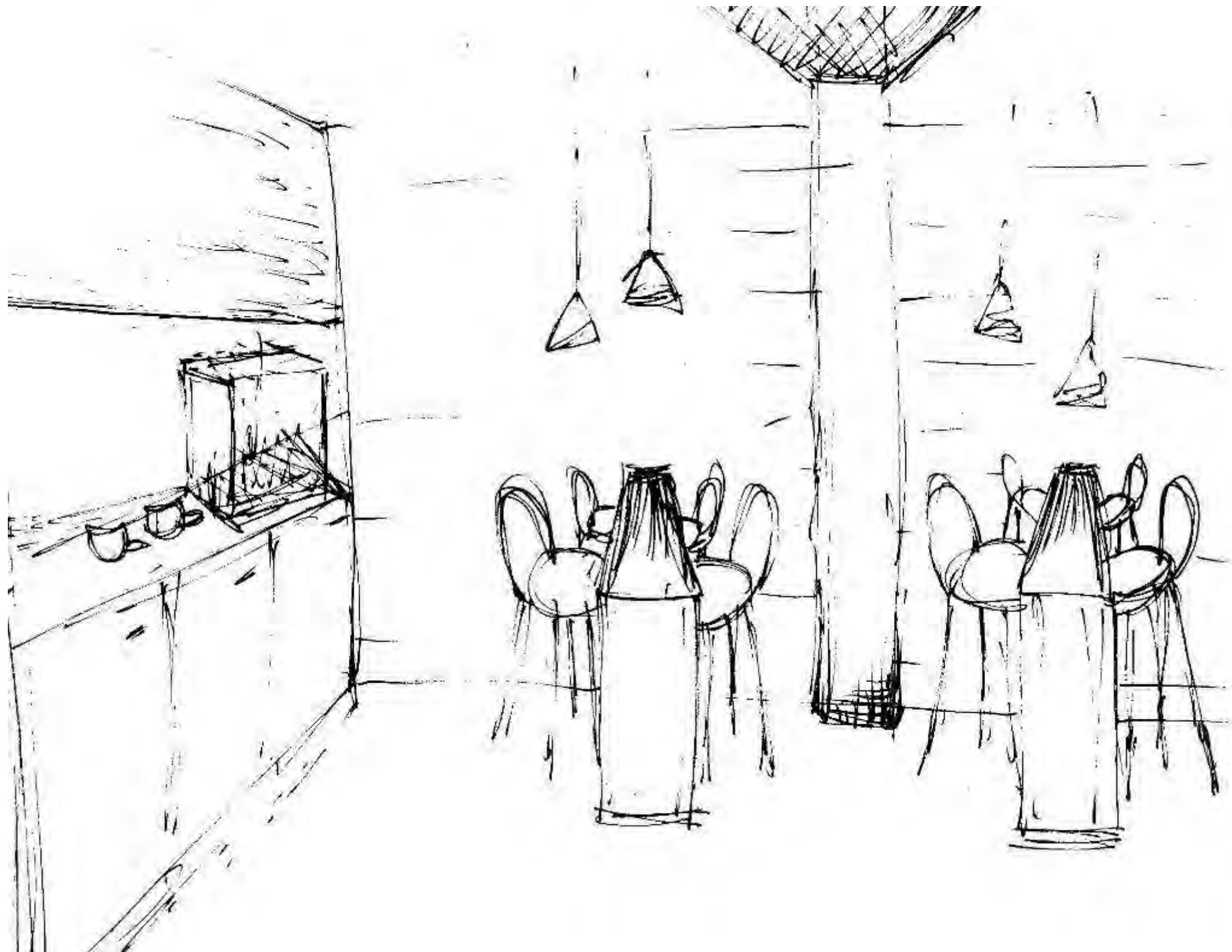
Entry (trace overlay perspective)



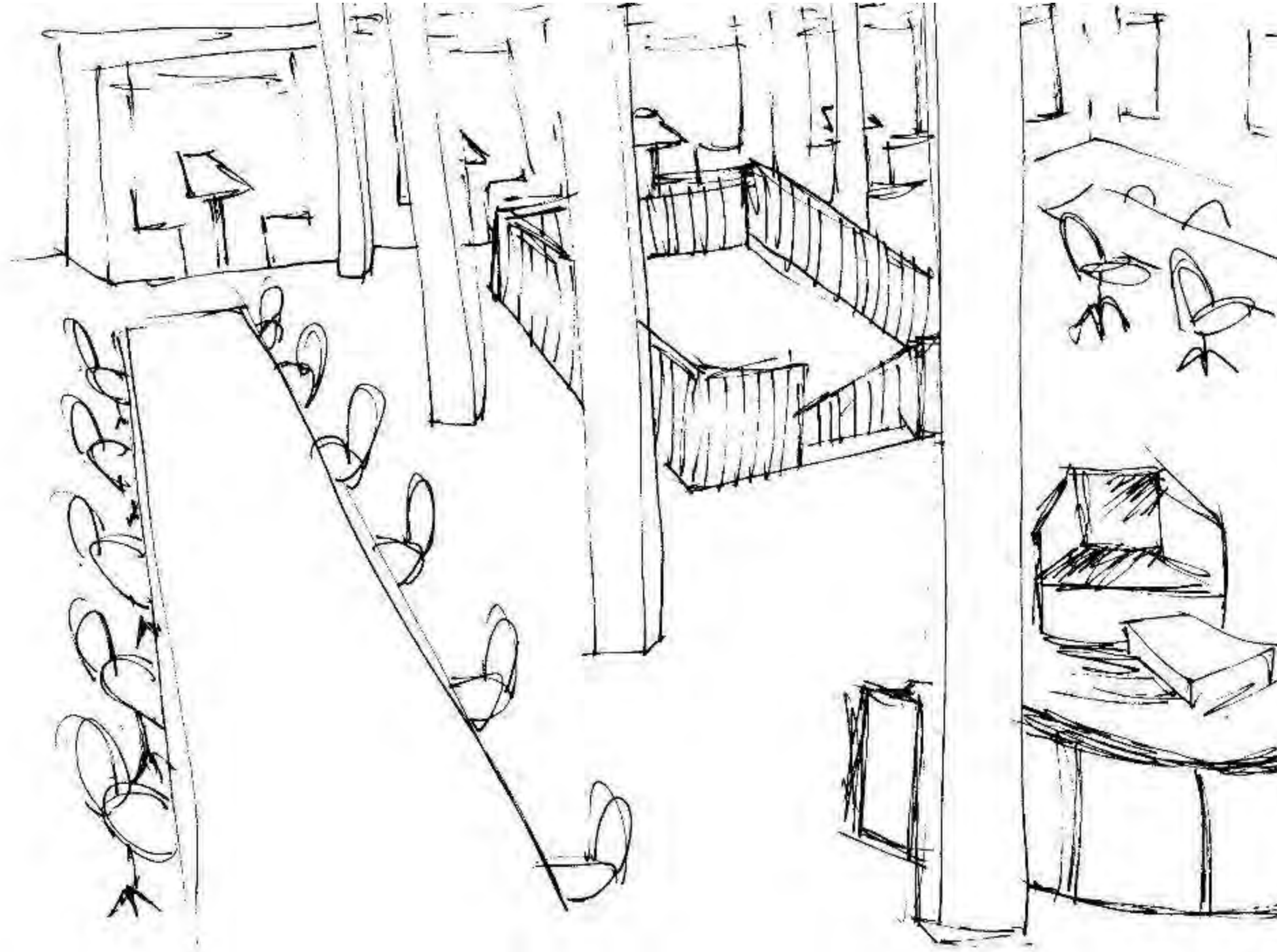
Exhibition (trace overlay perspective)



Pantry (trace overlay perspective)



Workstation (trace overlay perspective)



Entry SketchUp



Entry SketchUp



Exhibition SketchUp



Exhibition SketchUp



Pantry SketchUp



Workstation SketchUp



Workstation SketchUp



Design Concept

- The main concept for this design comes from the well-known Graveyard of the Atlantic found on the eastern coast of North Carolina
- Elements from different features found on ships can be seen throughout this design
- The gold touches are inspired by the treasure that sank with a fleet of Spanish merchantmen during the 1700's
- The goal is for visitors to get the feeling of being under the sea with the sunken ships of the Atlantic during their visit



Inspiration Images



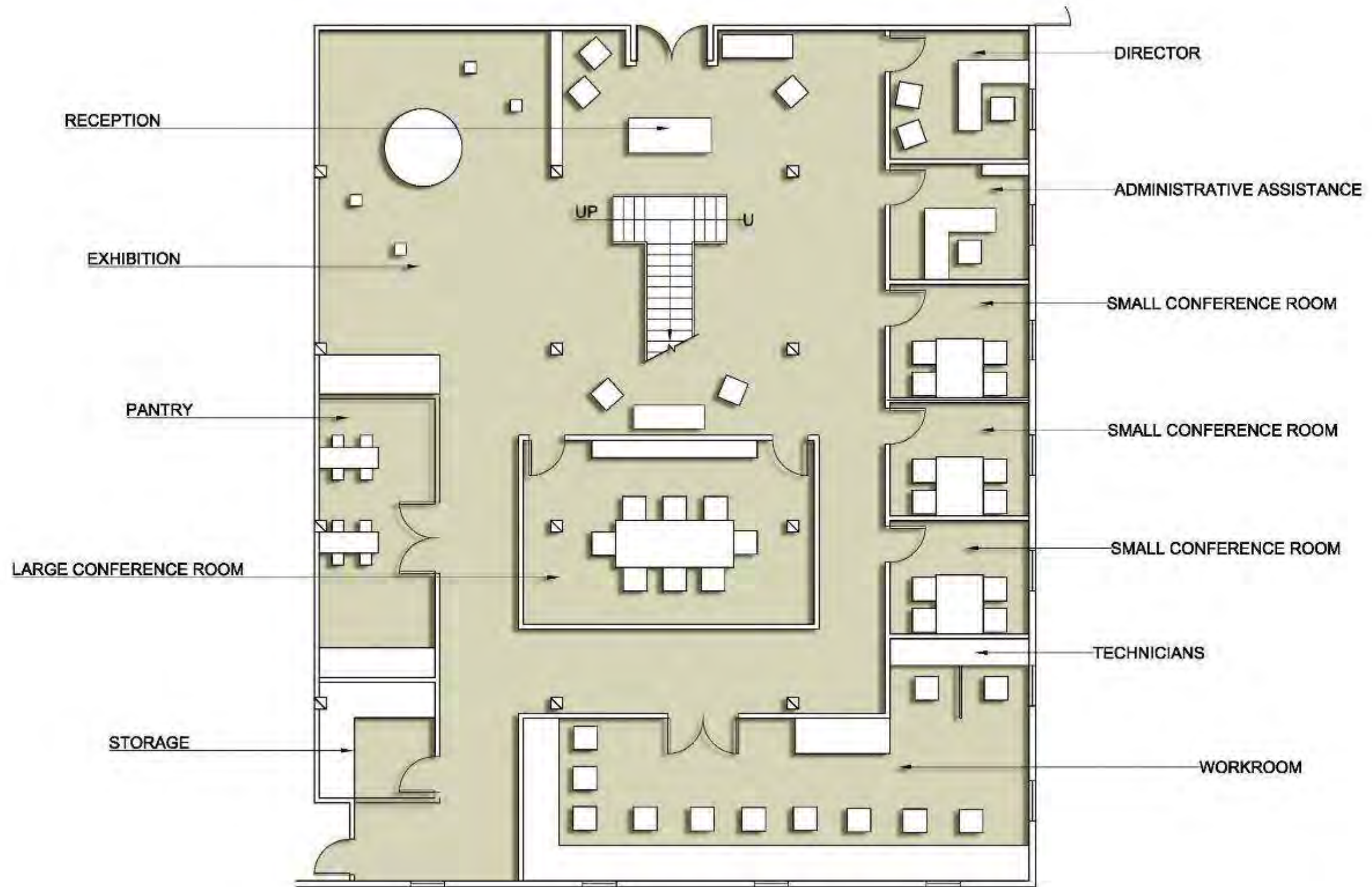
Architectural + Furniture Finishes (downstairs)



Architectural + Furniture Finishes (upstairs)



Downstairs Furniture Plan



Upstairs Furniture Plan

