

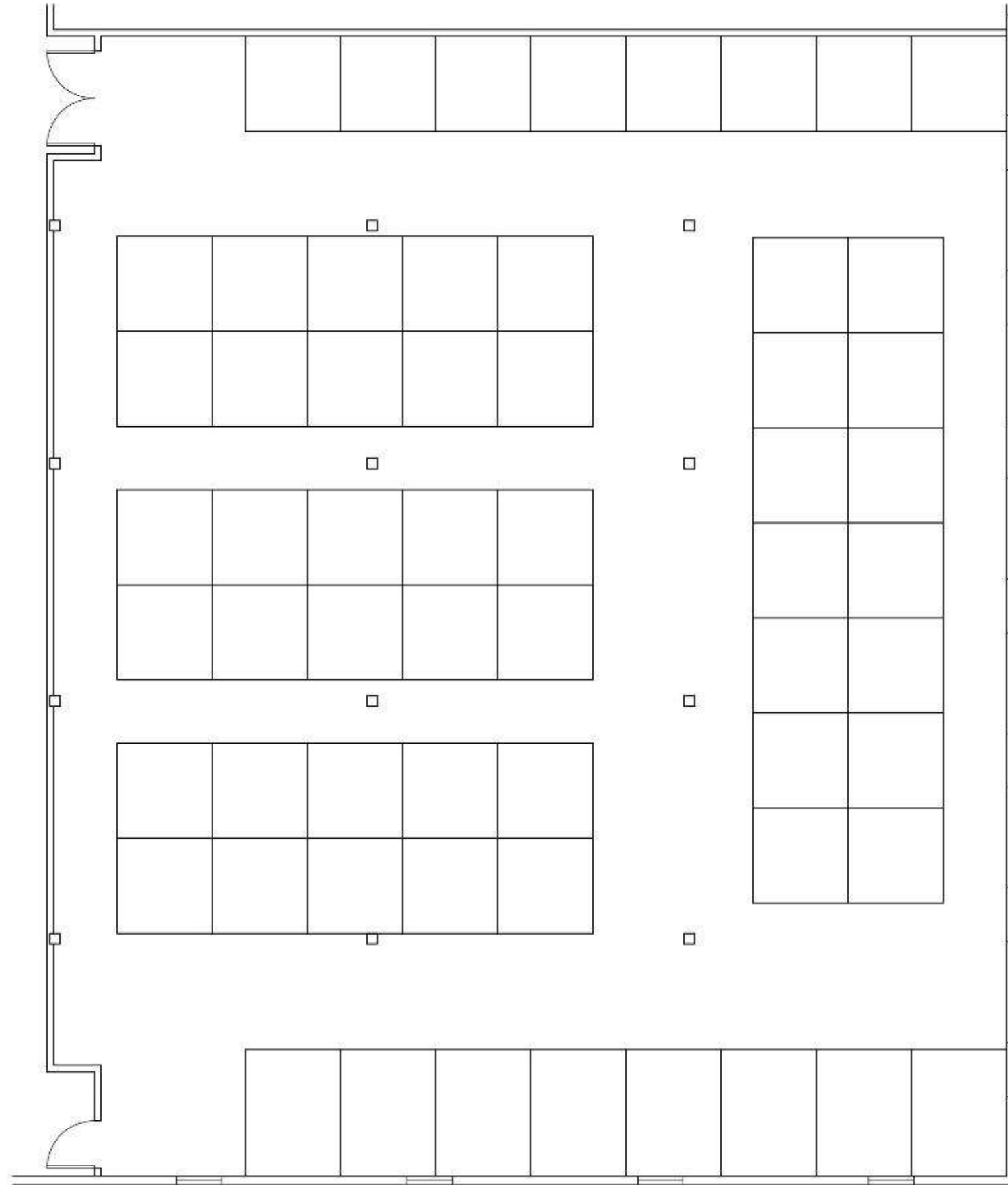
Savannah Johnson

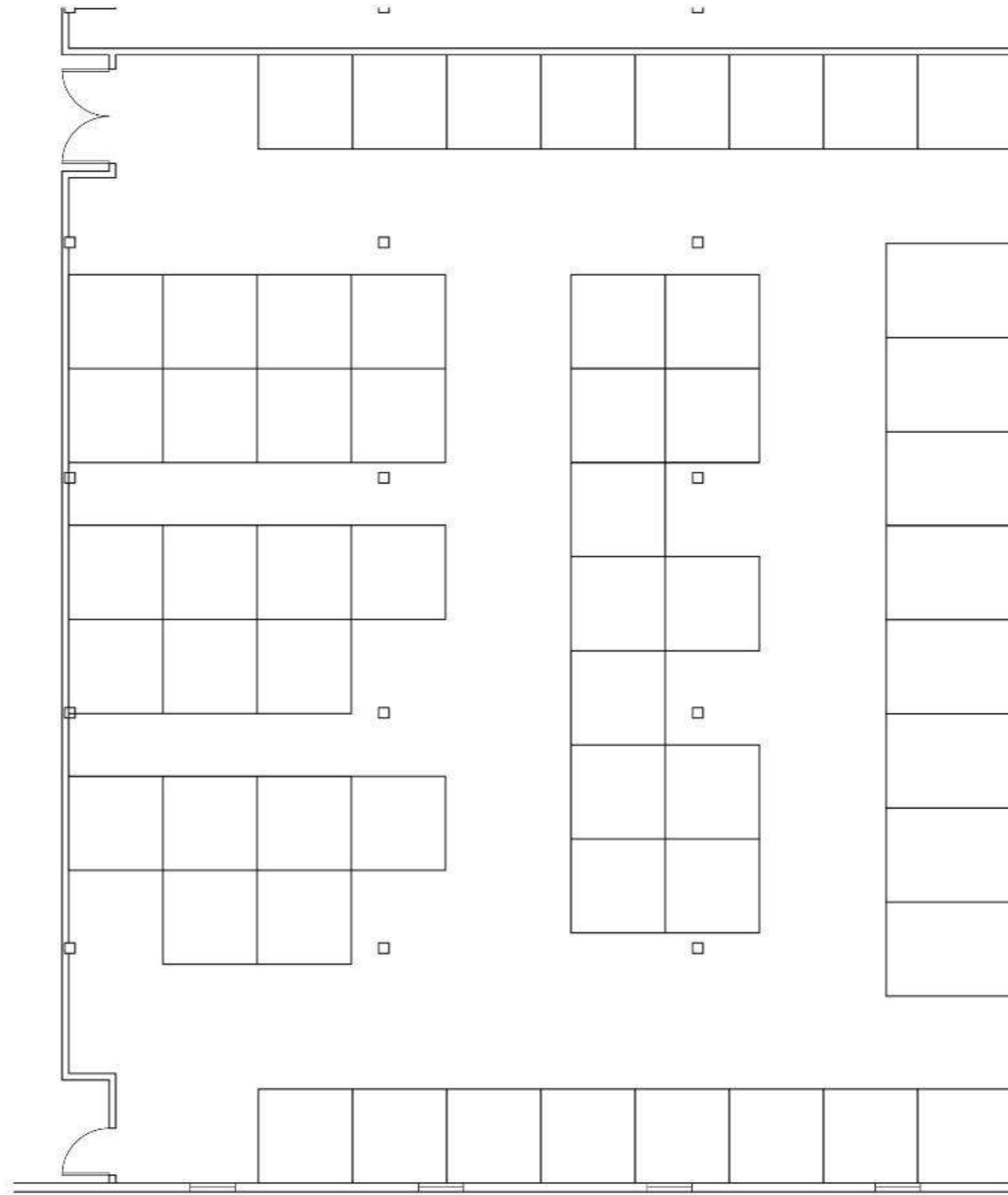
Portfolio 2

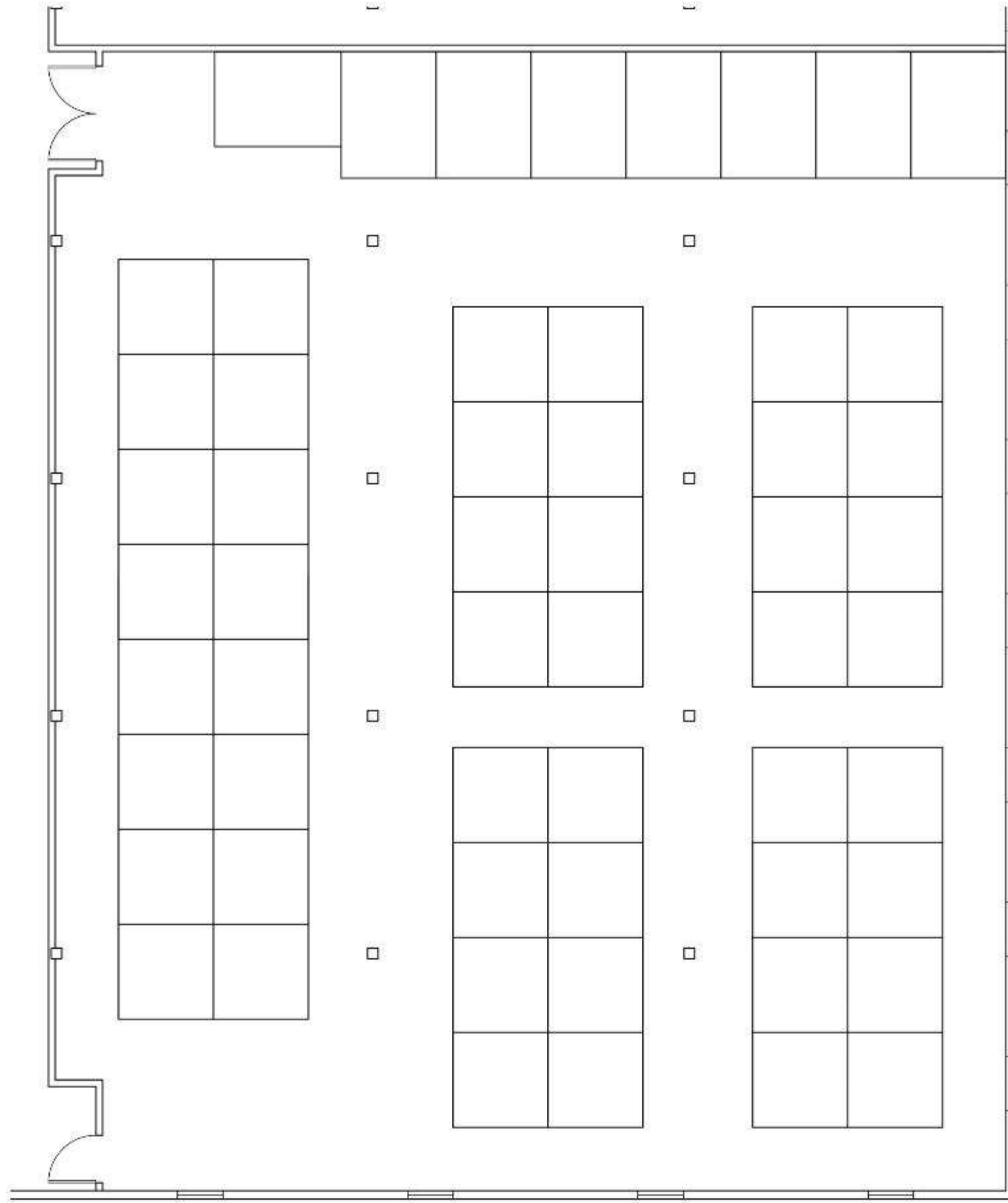
Fall 2017

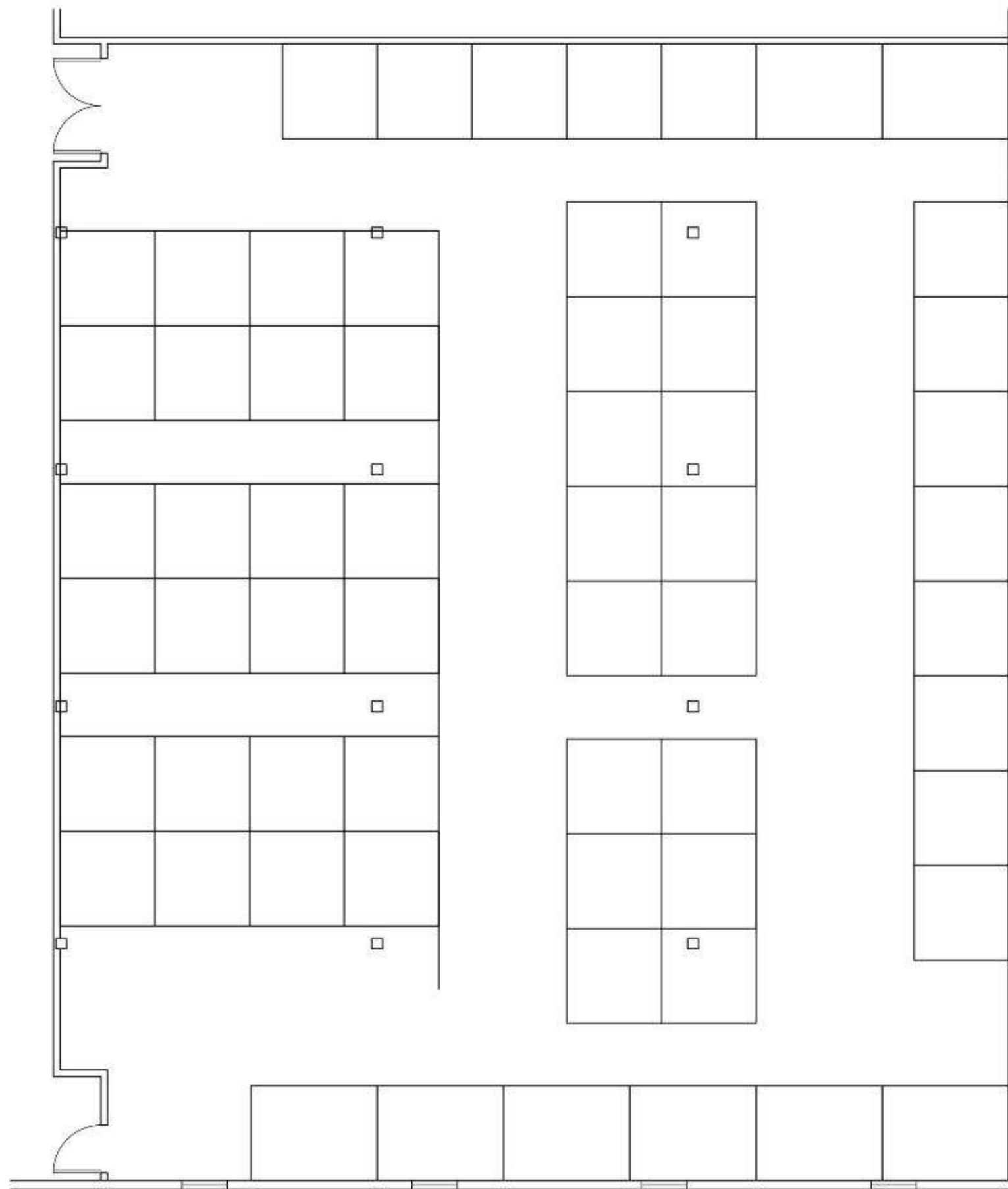
IDSN 2102

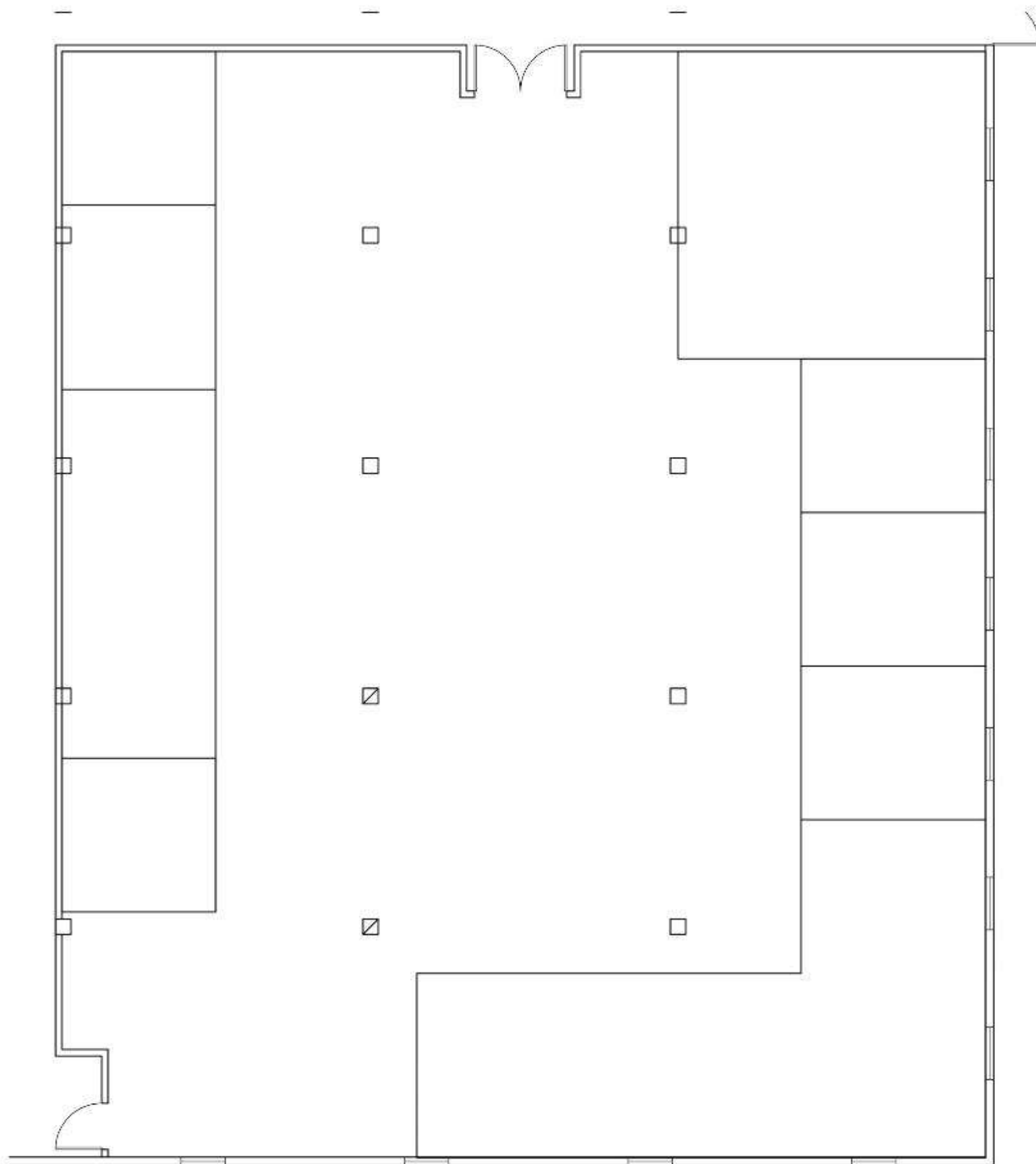
SPACE PLAN SKETCHES

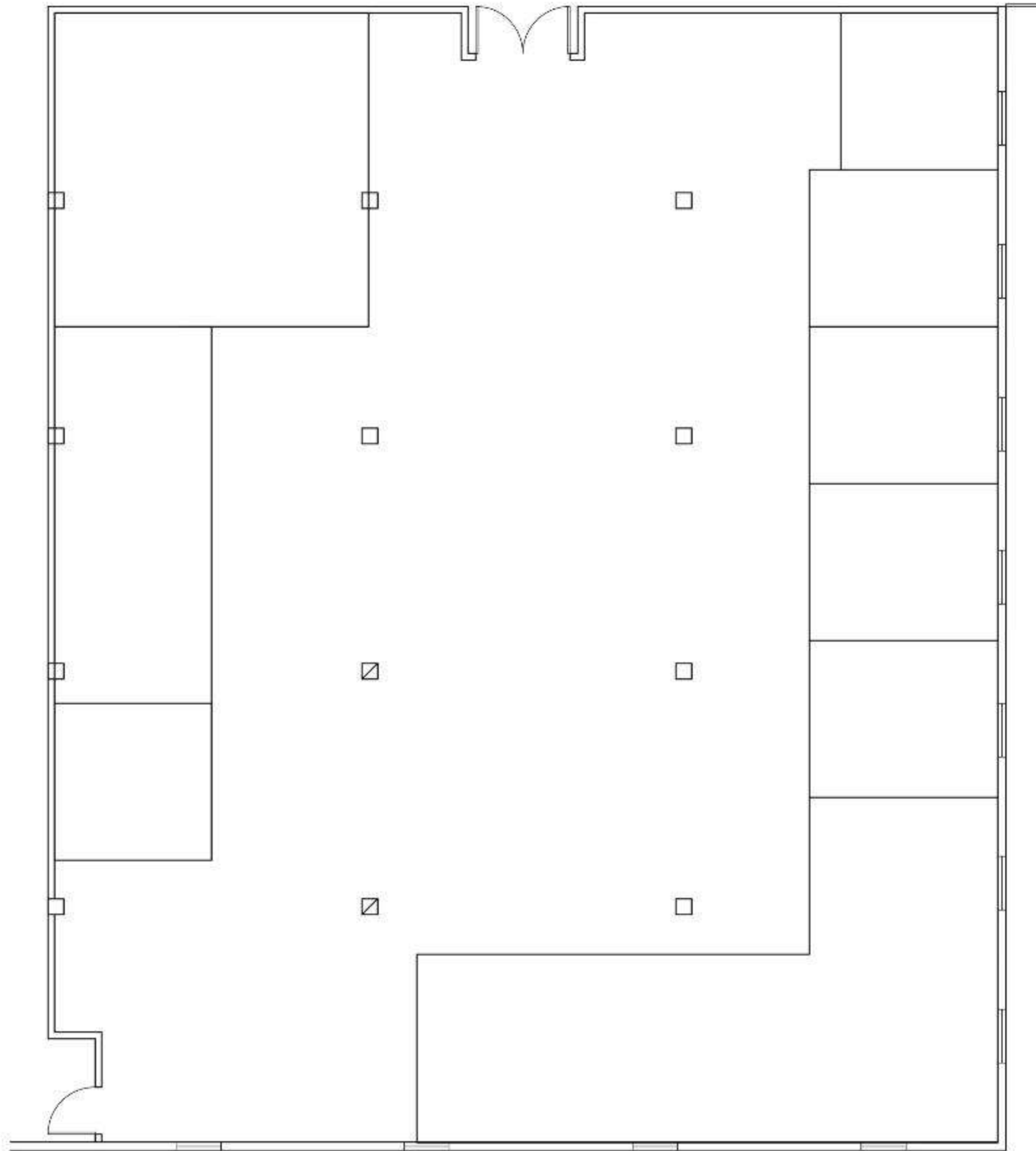


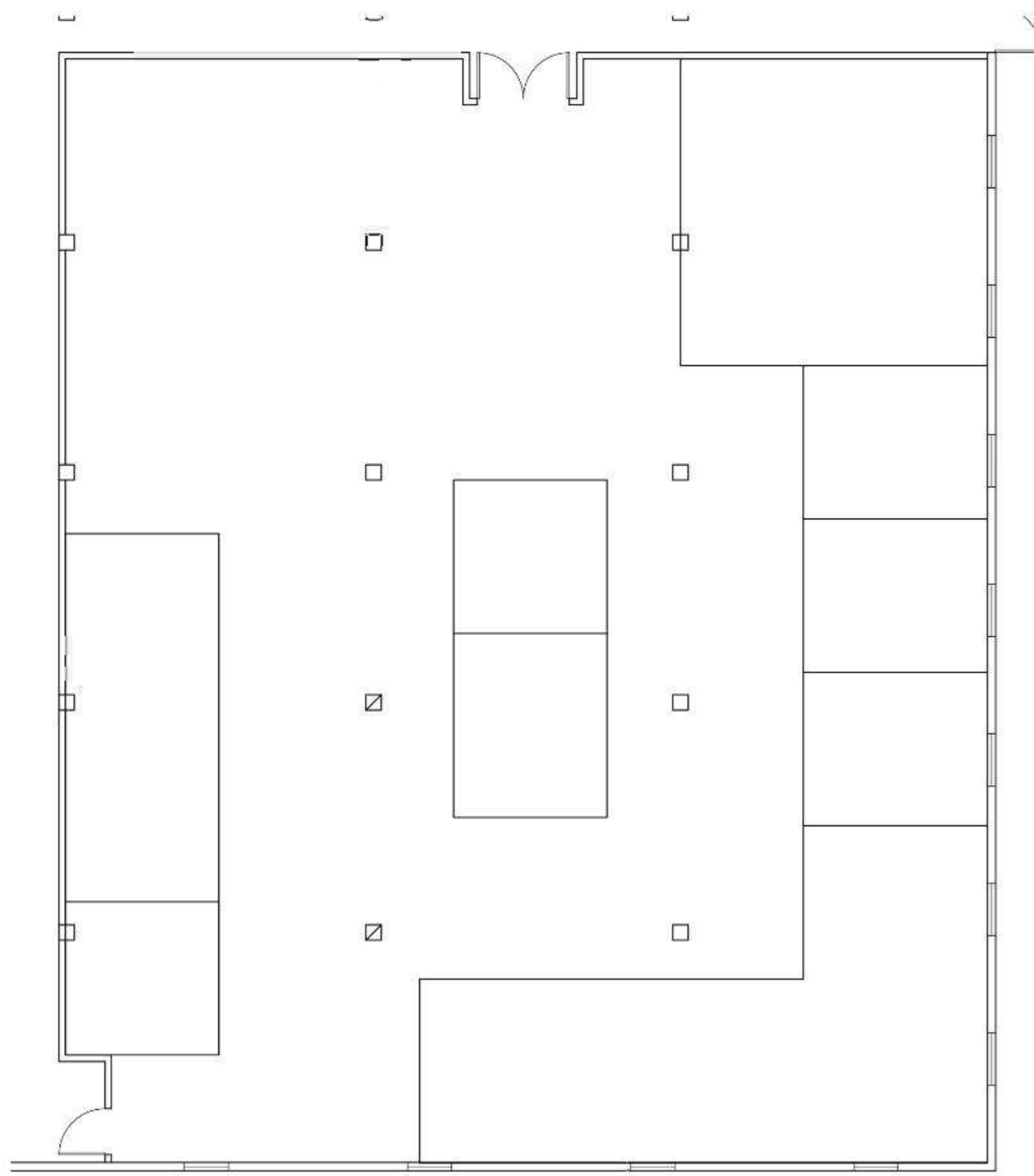


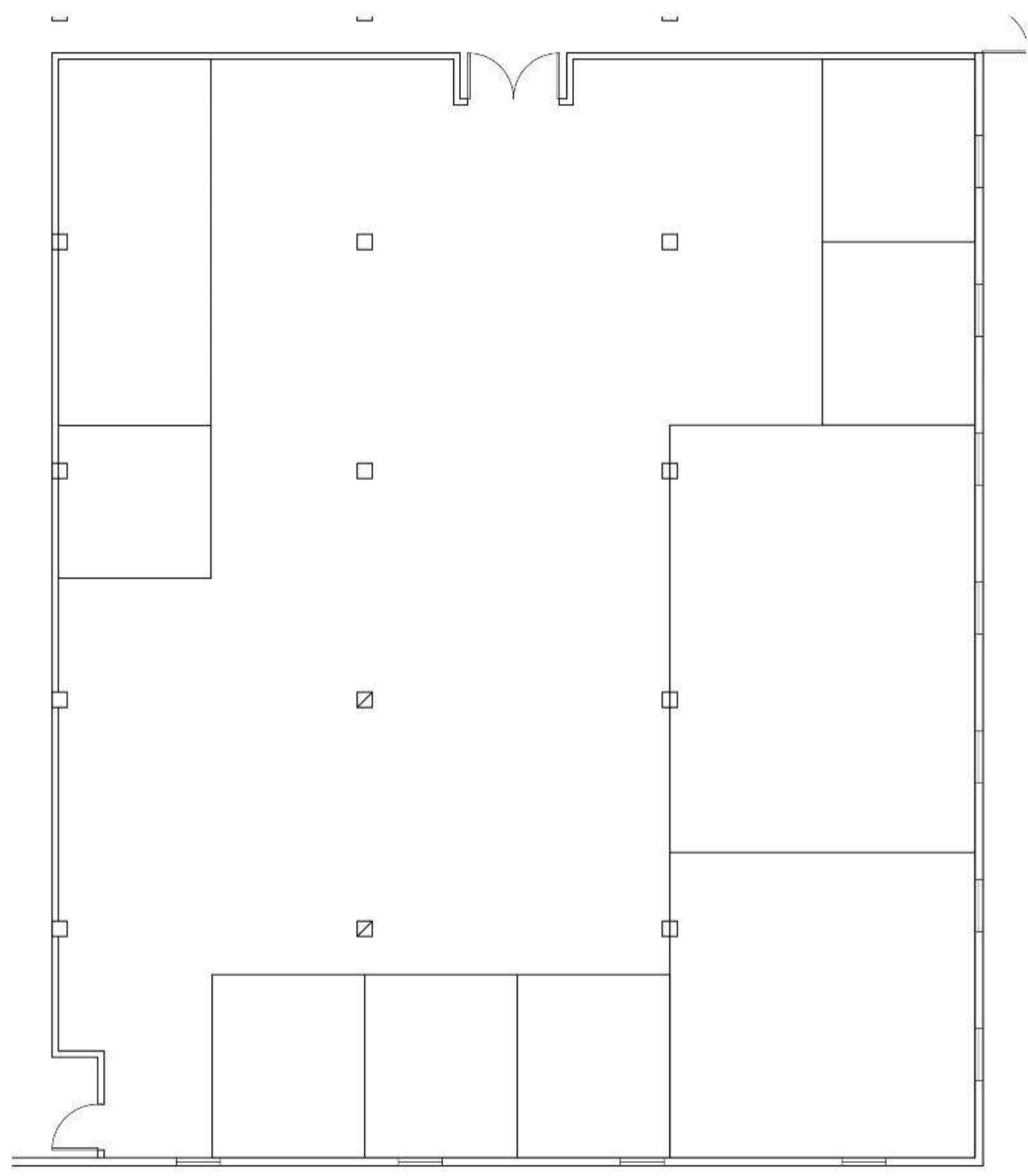


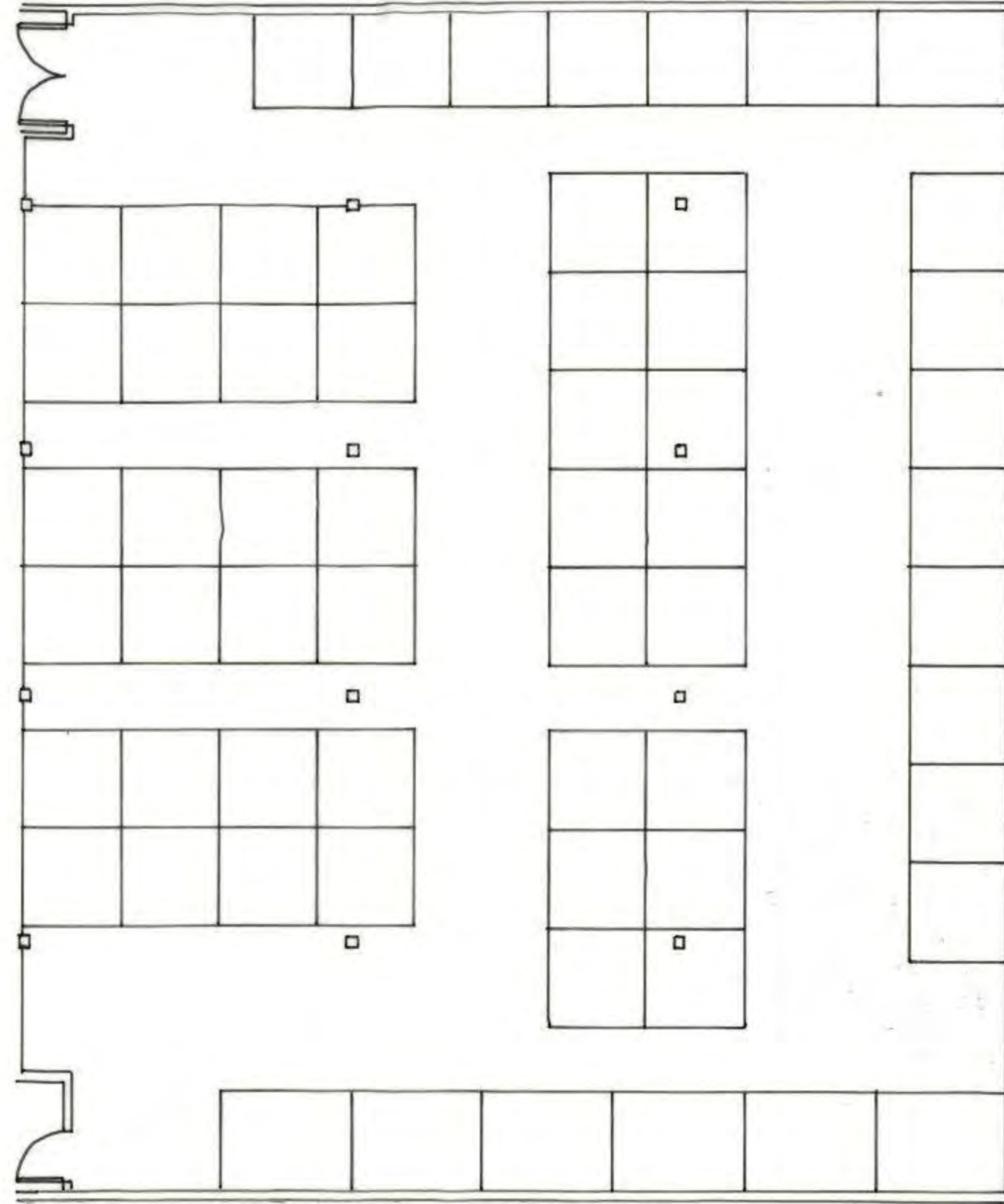


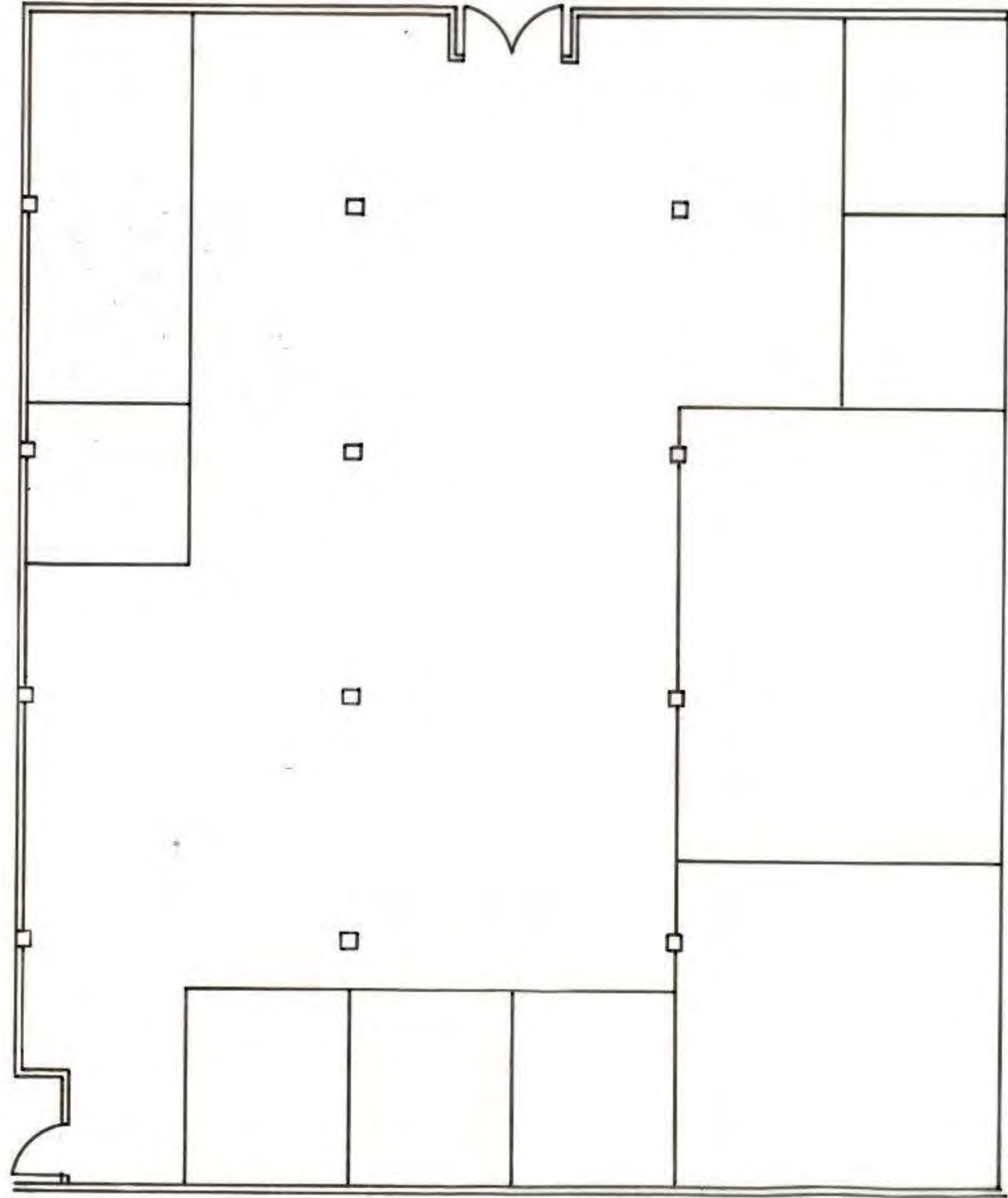


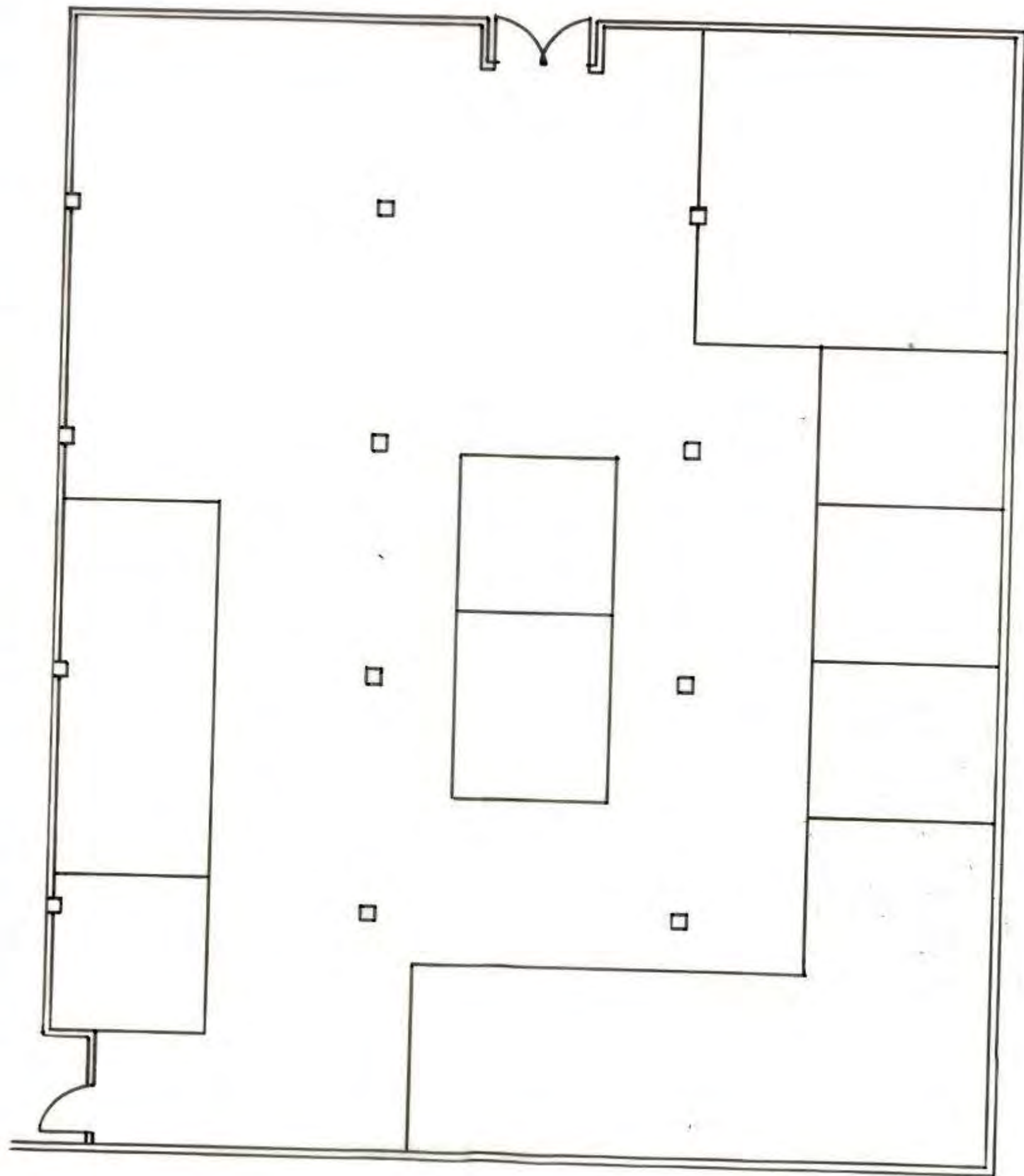












PERSPECTIVES







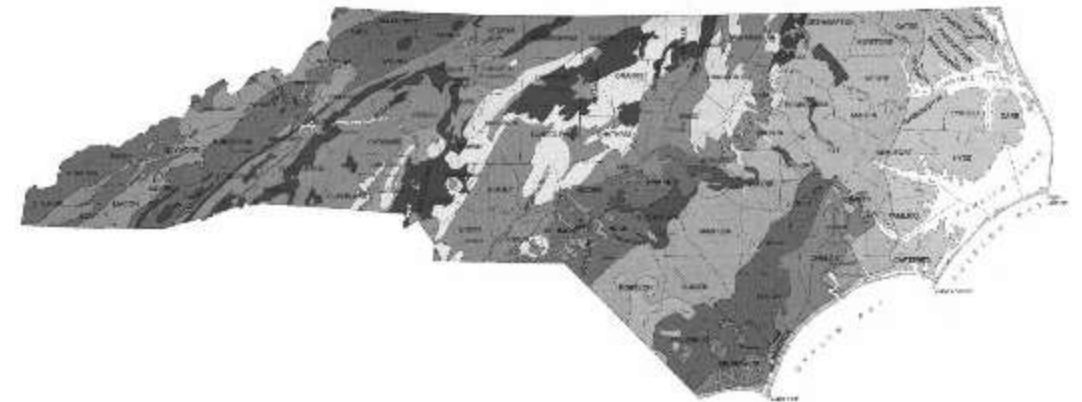


CONCEPT STATEMENT

- The overall concept is based on a rustic farm style.
- The goal is to honor the historical precedent of the building and the agricultural roots of the client's mission while adding a modern feel to the space.
- The aesthetic functionality of the space will be influenced by the combination of an open layout and artistic textures.
- The space will incorporate rustic materials like metal and wood to keep the aesthetic of the warehouse.
- To incorporate modern design, the upstairs will feature open office spaces and collaboration areas with emphasis on comfort.



INSPIRATION IMAGES



FURNITURE AND FINISHES

- The furniture and finishes are done to incorporate the historical precedent of the building.
- The wood used in the beams will be the original wood from the building.
- The shiplap used on the walls will be manufactured in coastal Carolina.
- The wrought iron and corrugated metals keep the design rustic and incorporate some of the industrial aspects of the original warehouse.
- The rusted red color paint color used throughout brings in the old barn colors.



ENTRY



EXHIBITION



PANTRY



WORKSTATIONS



FINAL PLAN



RECEPTIONIST

EXHIBITION

LARGE CONFERENCE

SMALL CONFERENCE

ADMINISTRATIVE ASSISTANT

0'-2"

4'-0"

7'-10"

SMALL CONFERENCE

DIRECTOR

PANTRY/ BARISTA

SMALL CONFERENCE

STORAGE

WORKROOM/ TECHNICIANS

