

PORTFOLIO 2

Marbella Macias

IDSN 2102 Communication Fall
2017

Hughes Tobacco Warehouse

East Carolina University

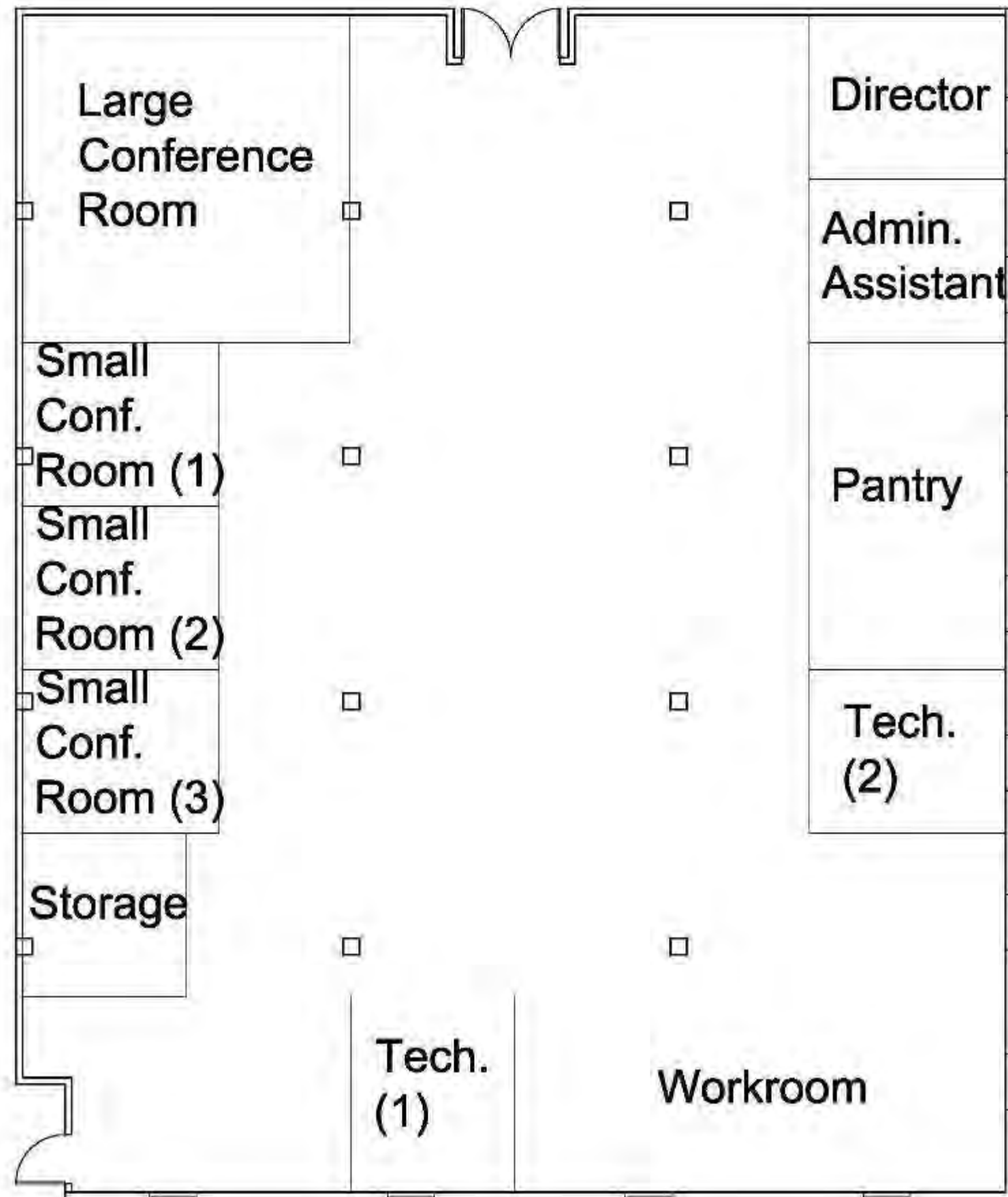
Table of Contents:

Space Plan Sketches	2-9
Trace Perspectives	10-11
SketchUp Perspectives	12-18
Concept Statement and Inspiration Images	19-20
Architectural Finishes, and Furniture and Finishes	21-22
AutoCAD Final Plans	23-24

Space Plan Sketches:

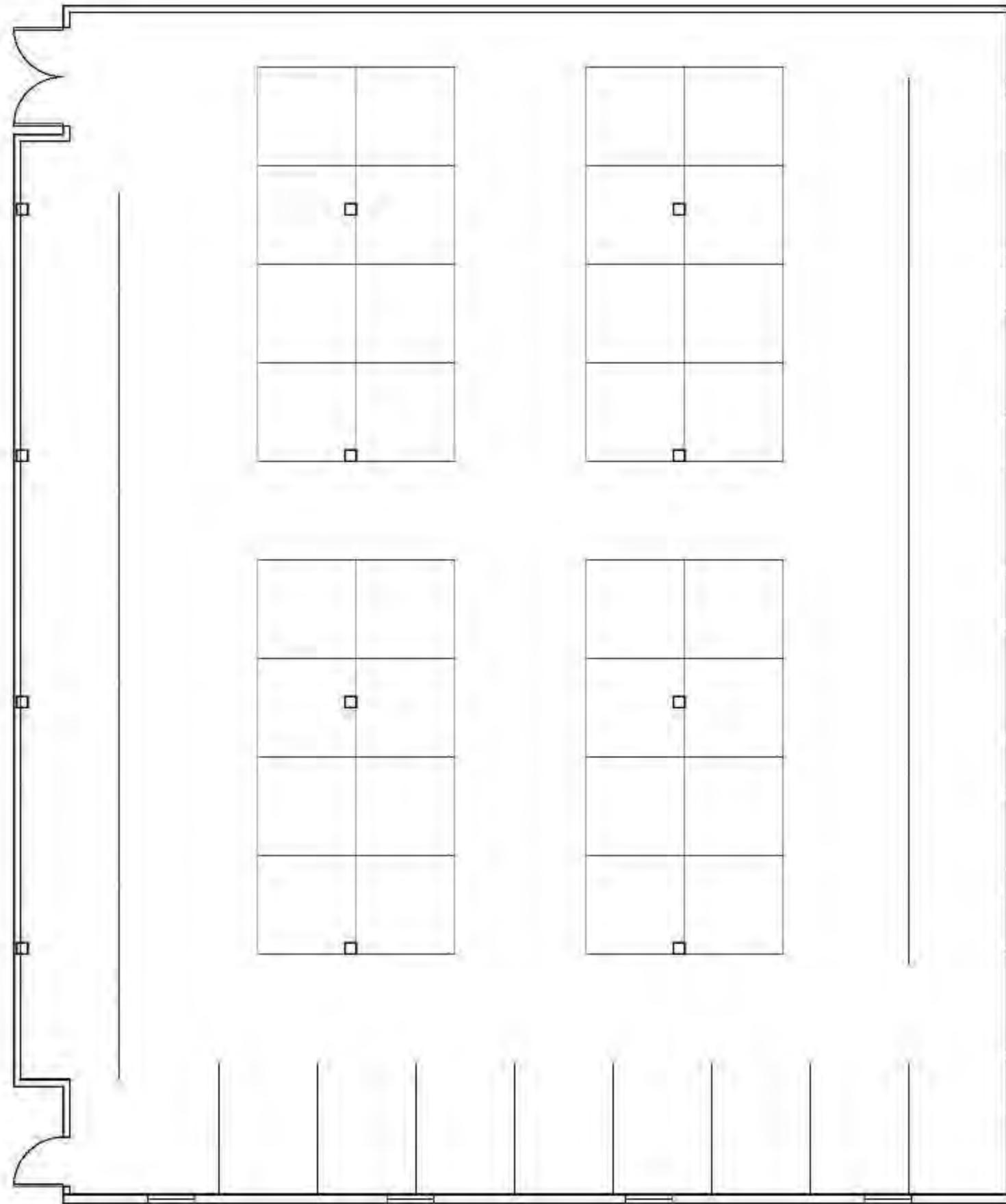
SketchUp: 1st Floor: Plan 1

1/8 inch = 1 foot

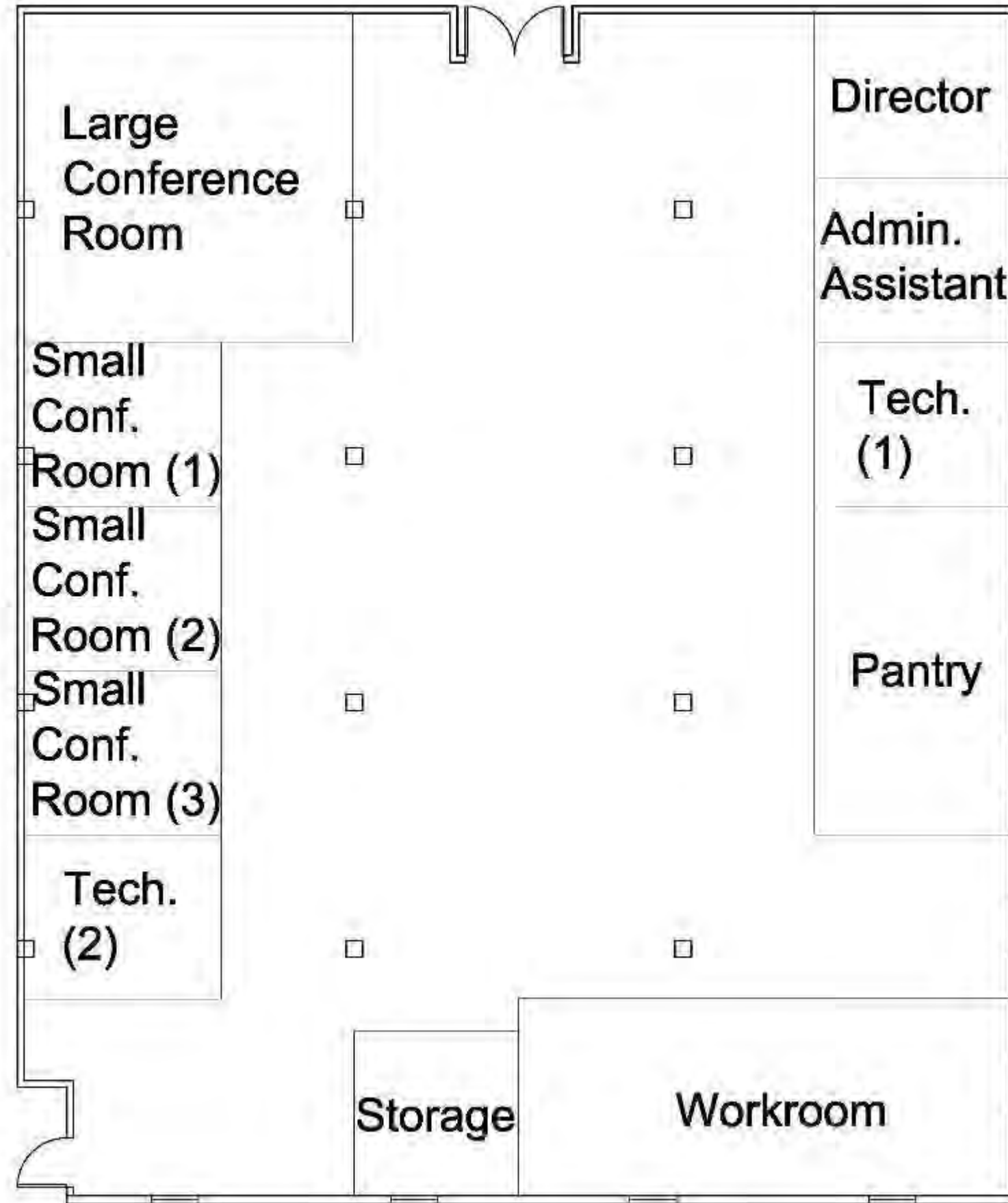


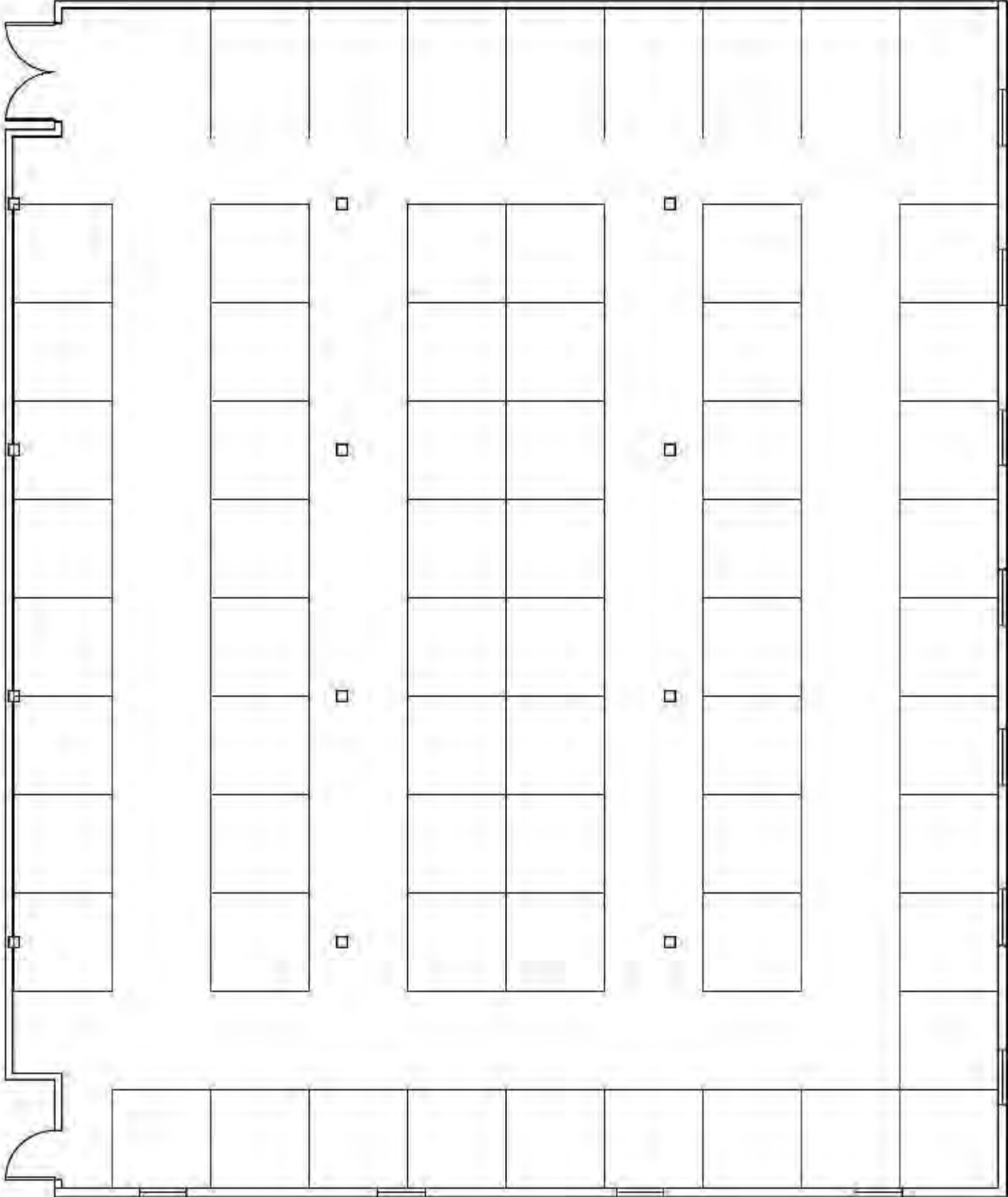
SketchUp: 2nd Floor: Plan 1

1/8 inch = 1 foot



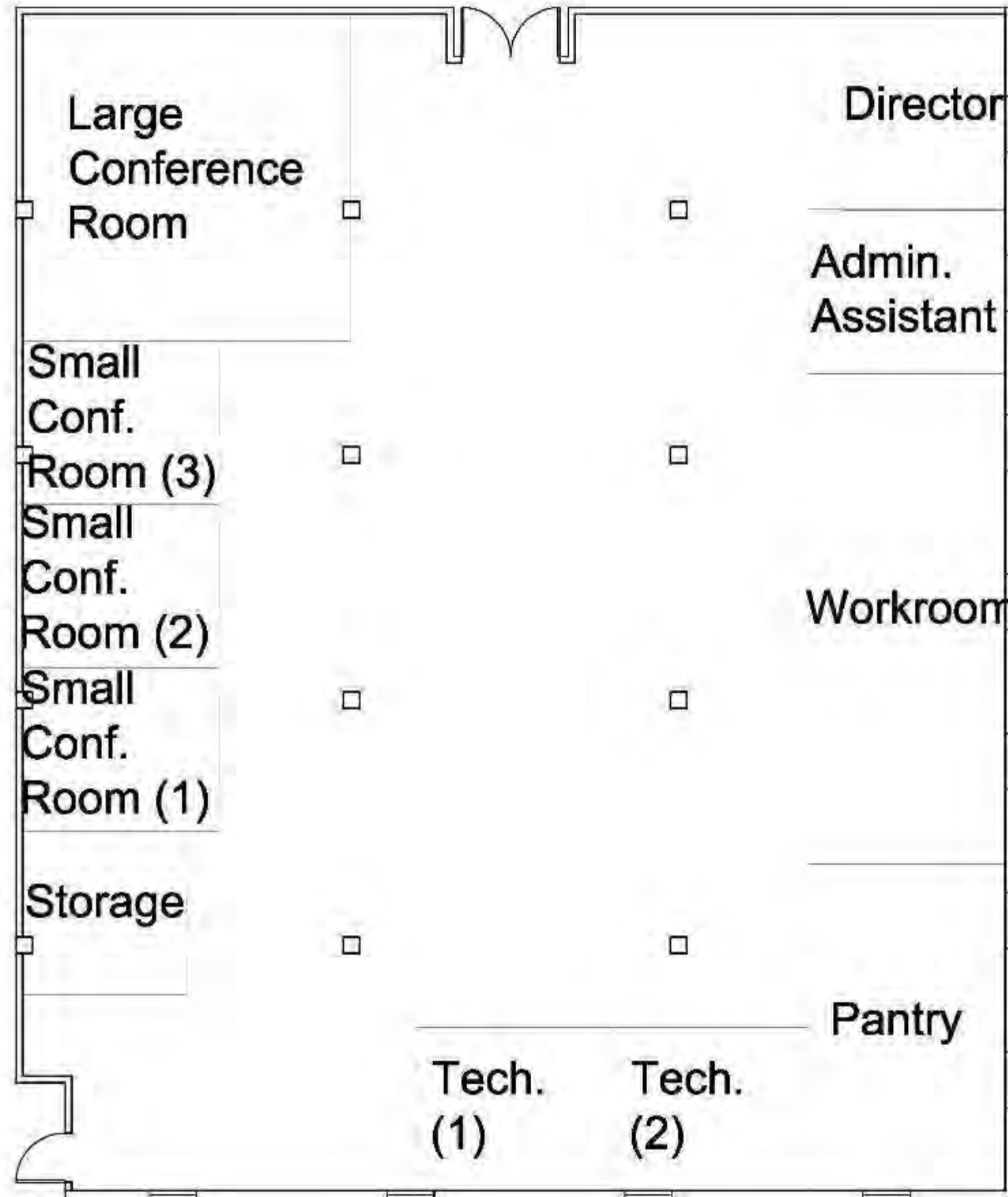
1/8 inch = 1 foot





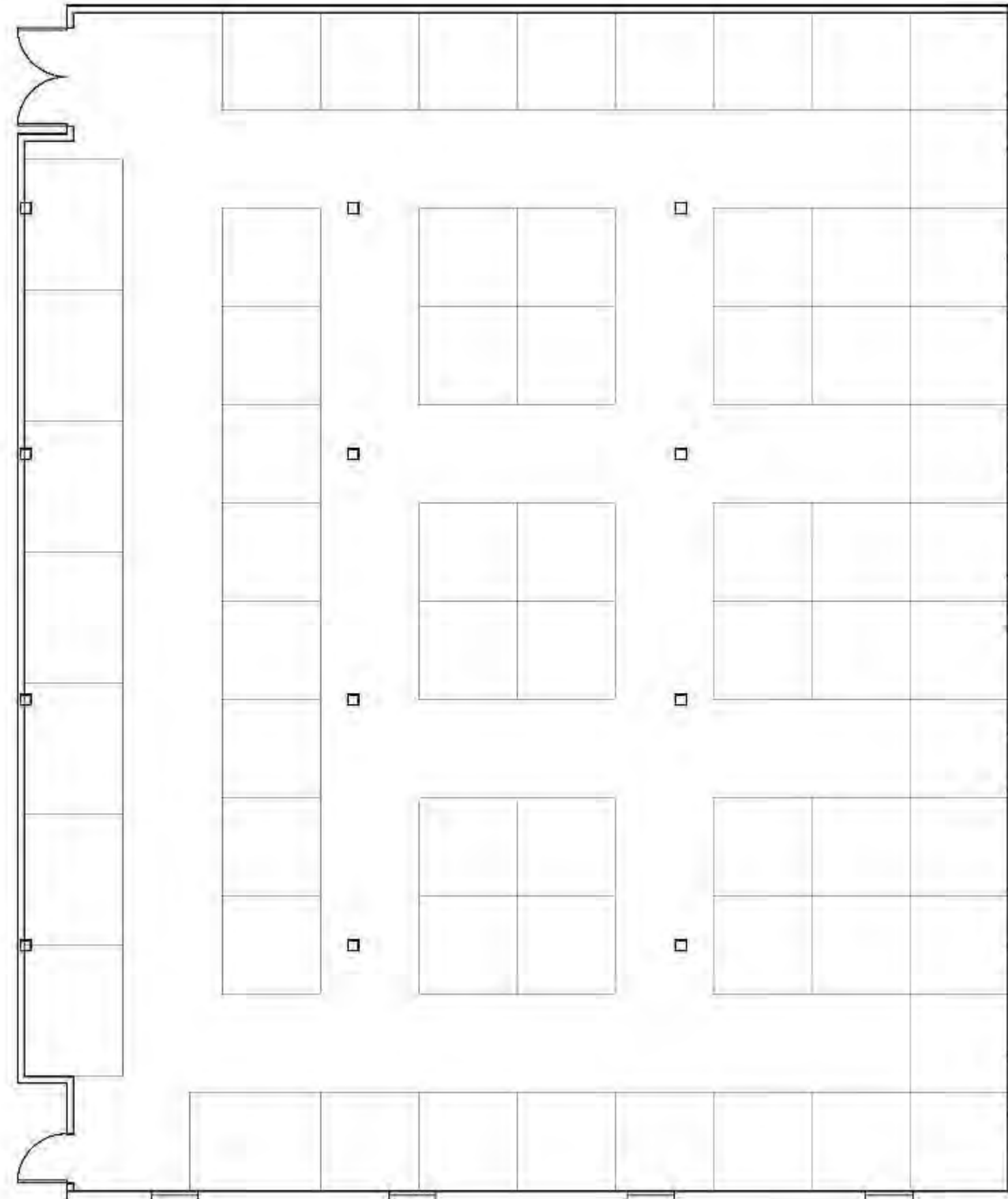
1/8 inch = 1 foot

1/8 inch = 1 foot

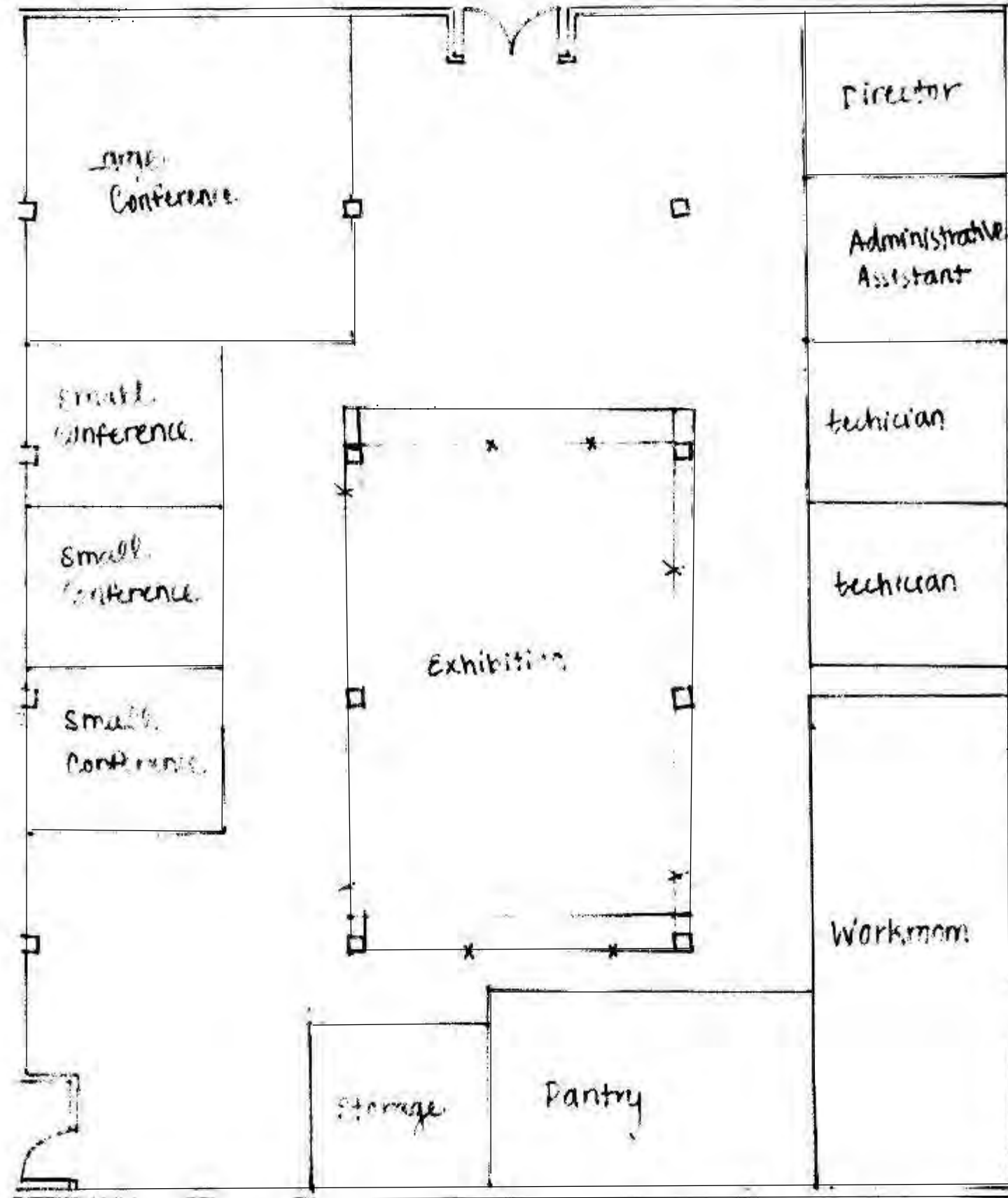


SketchUp: 2nd Floor: Plan 3

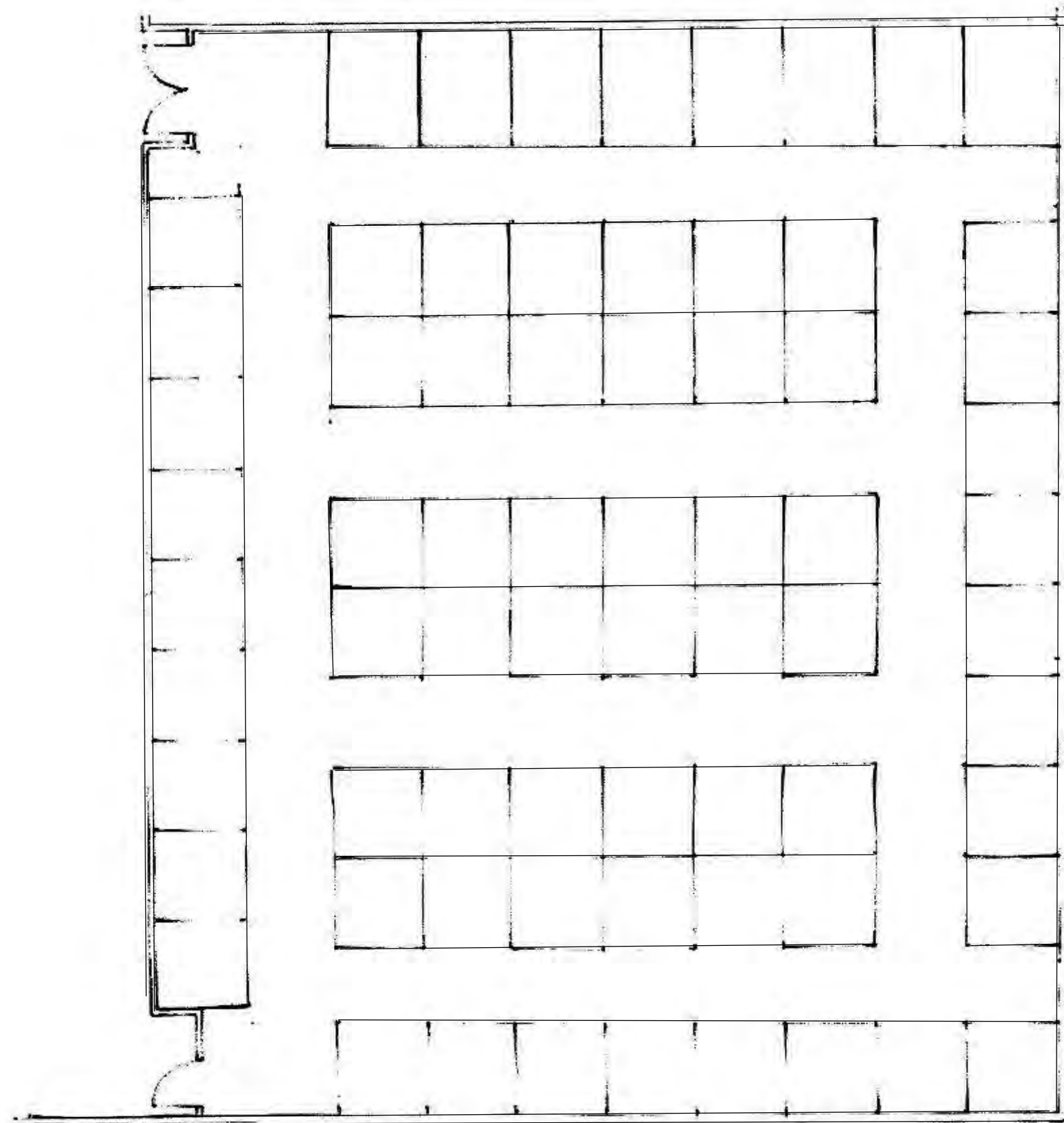
1/8 inch = 1 foot



Trace: 1st Floor: Plan 4

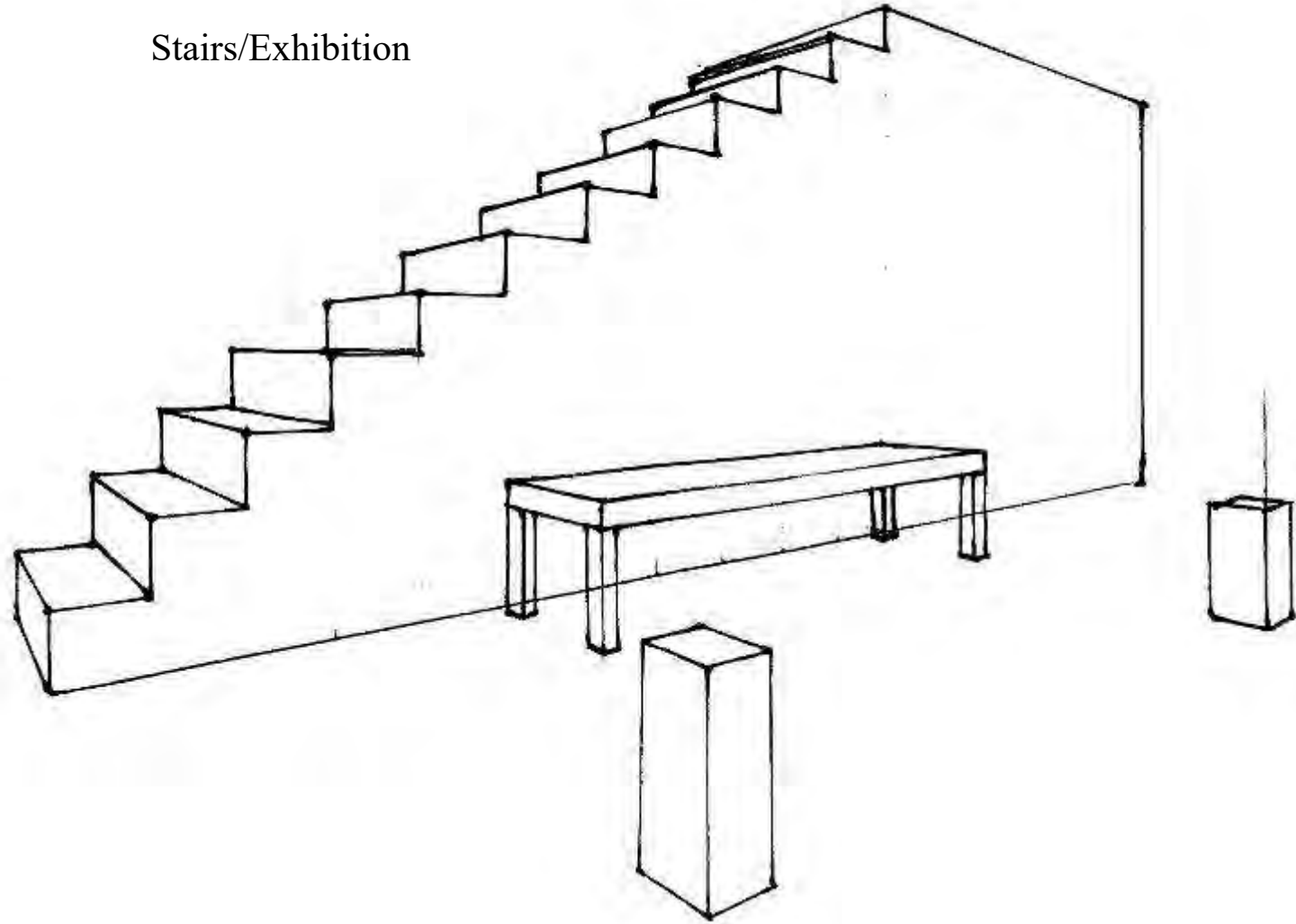


Trace: 2nd Floor: Plan 4

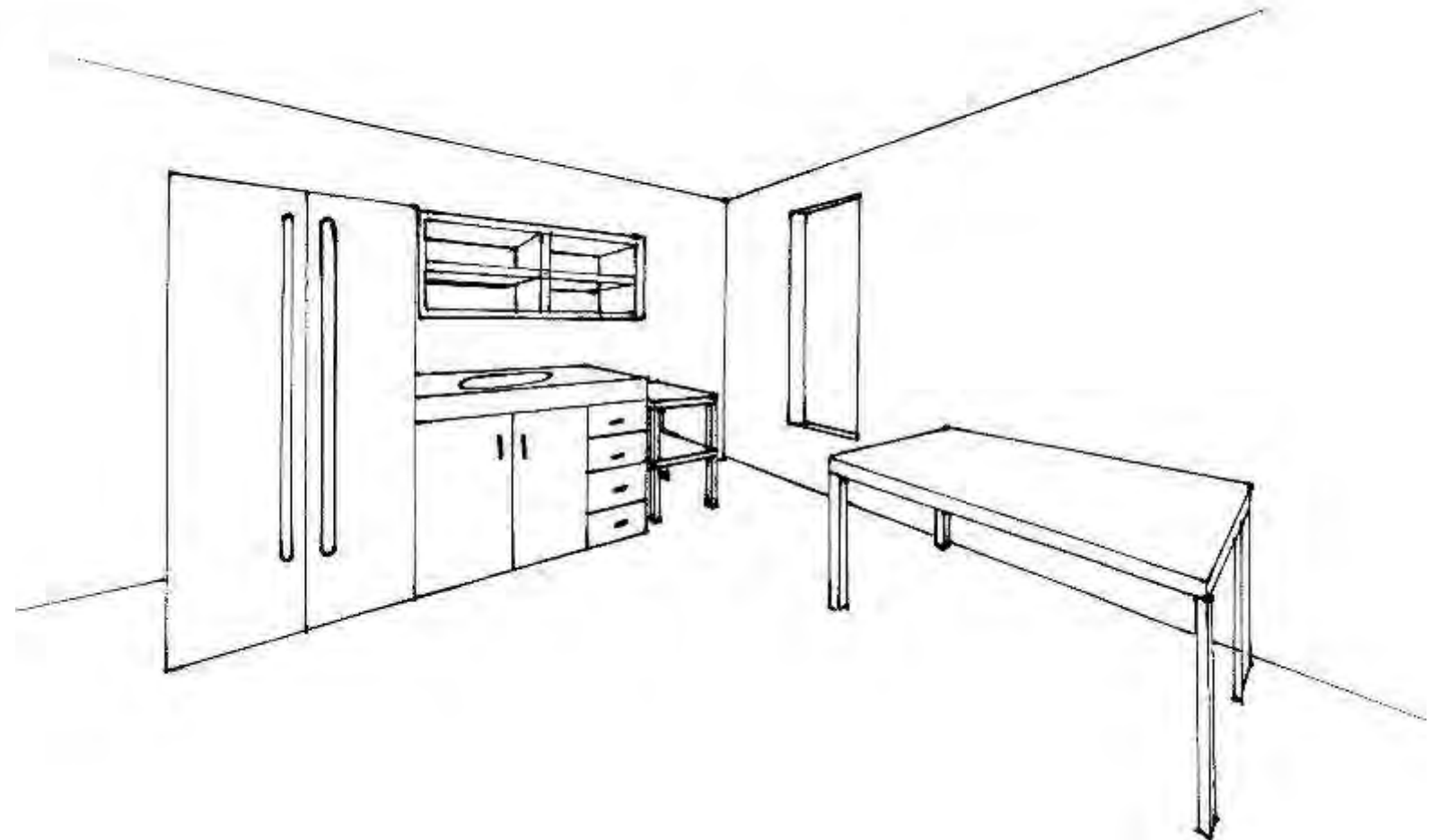


Trace Perspectives:

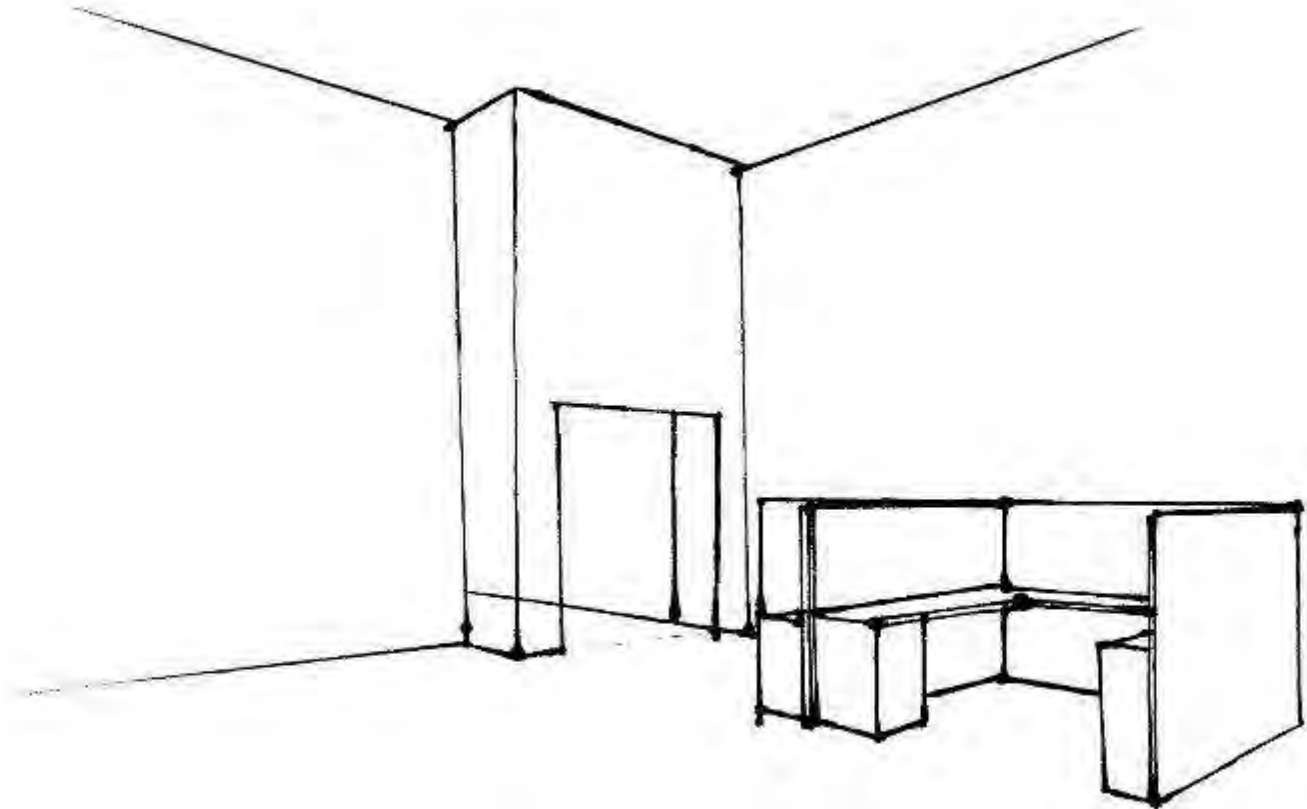
Stairs/Exhibition



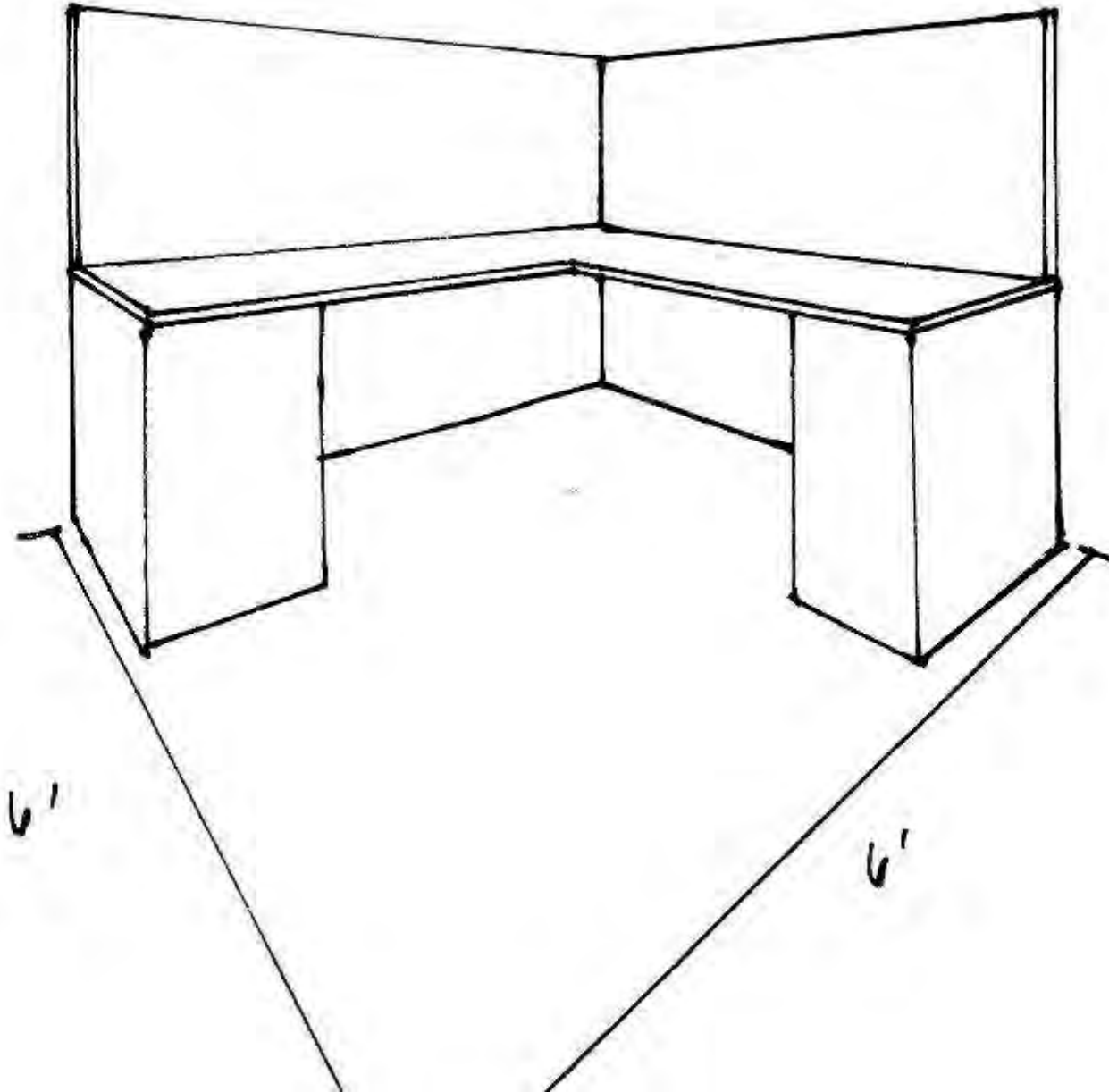
Pantry



Second Floor Front Corner



Cubicle: 6 X 6

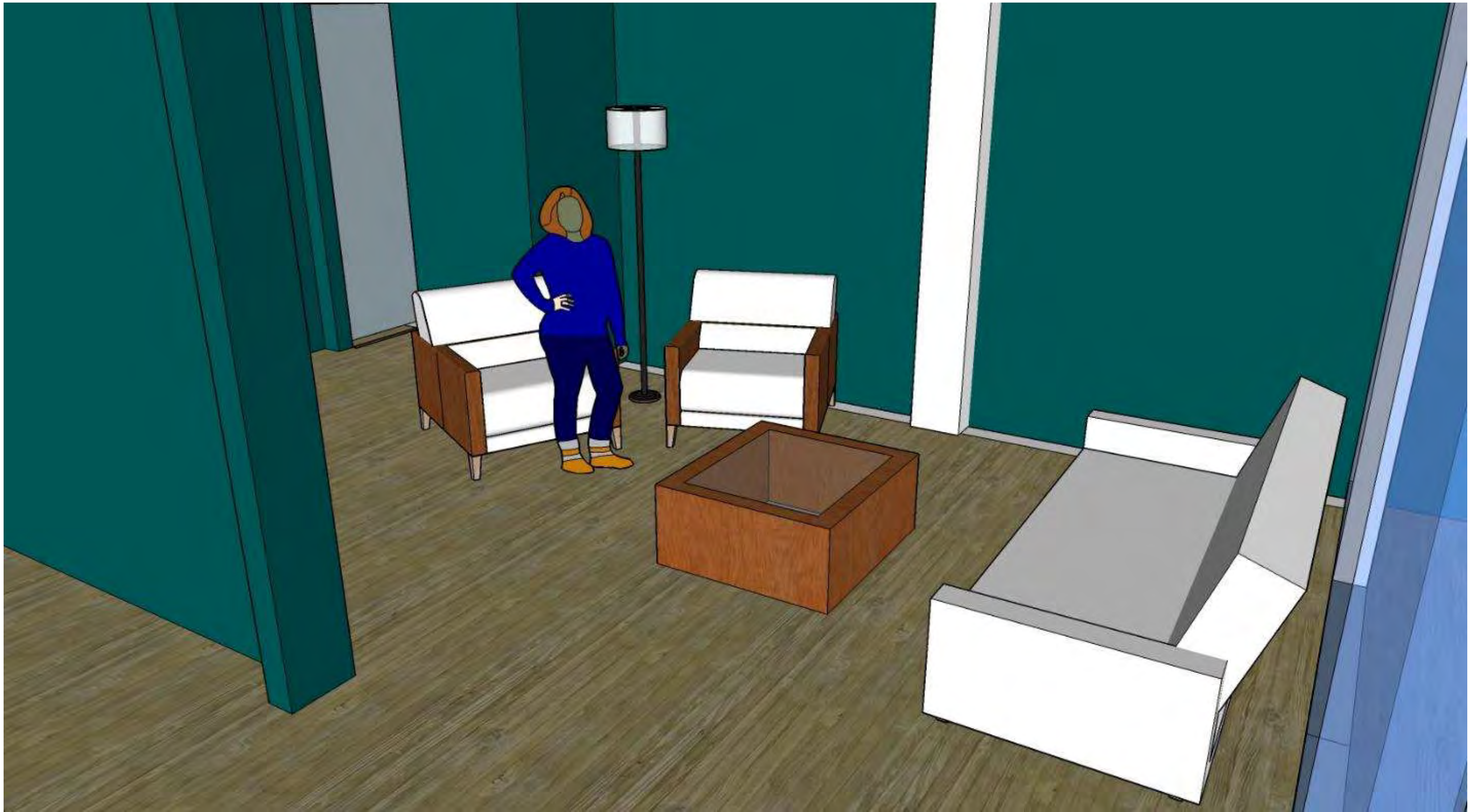


SketchUp Perspectives:

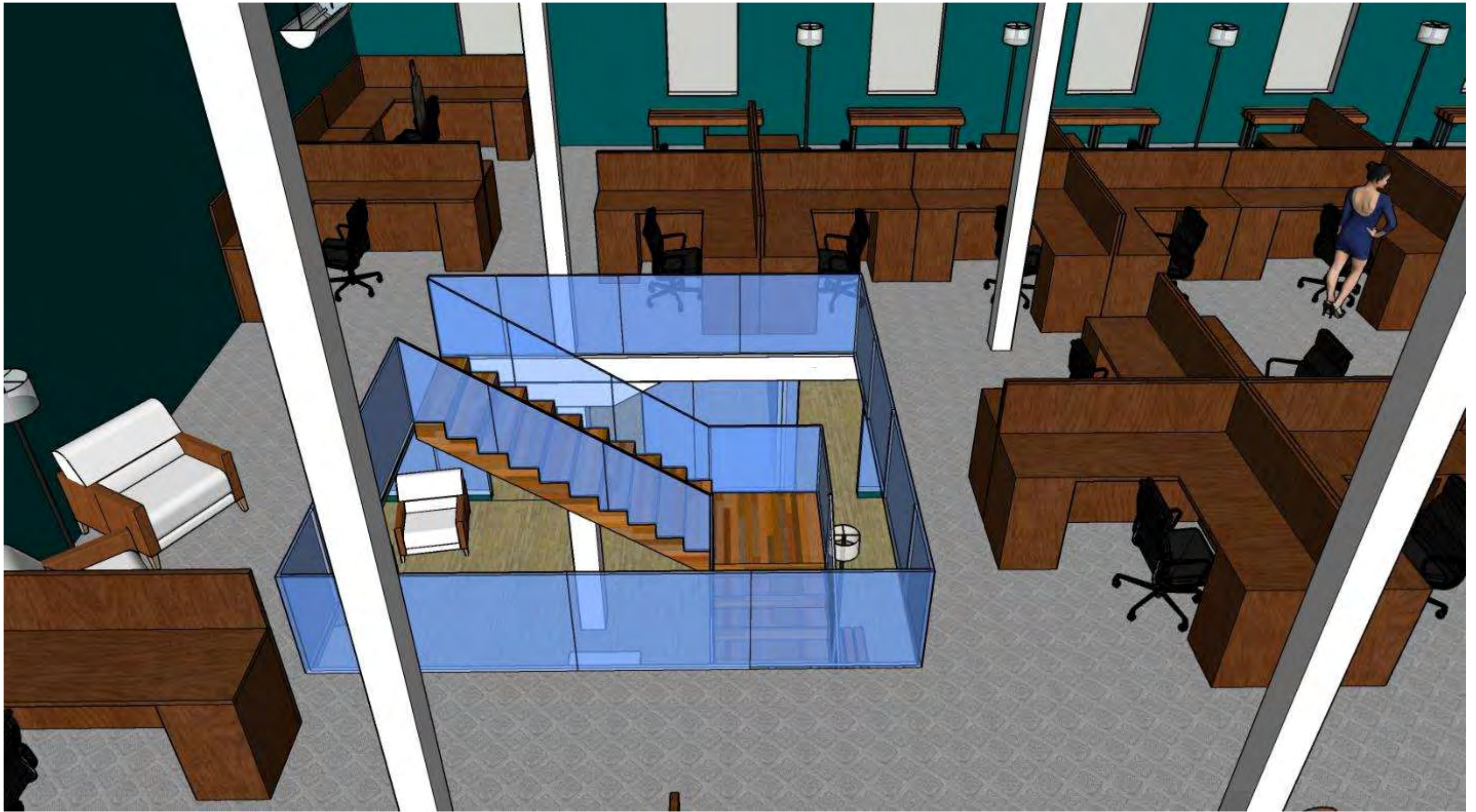














Concept Statement and Inspiration Images:

❖ Old Train Carts

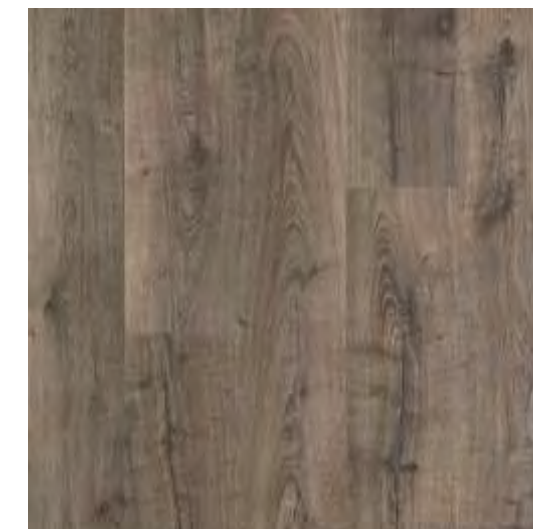
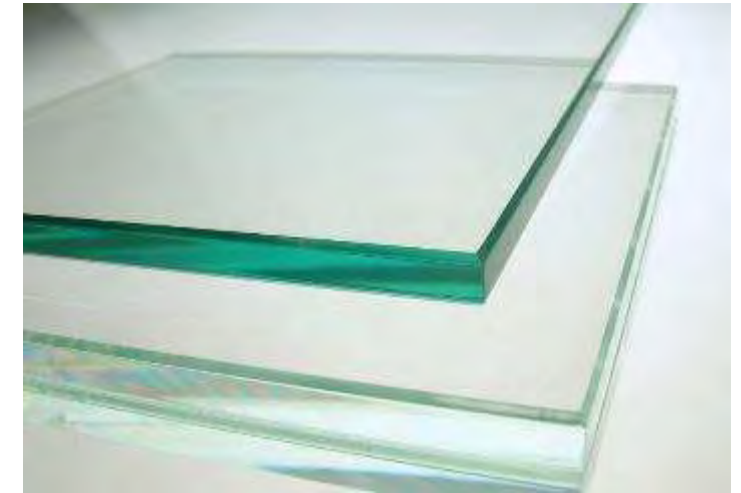
- The materials and design are influenced by the carts' rustic aesthetic.
- The wheel and box shape are reiterated throughout the building design.
- The trains' juxtaposition of it being considered "old" and being a modern invention for its time is carried throughout the design.
- Transitional with suggestions from Coastal NC inspired by the carts' austere look.
 - Transitional: The transition from traditionalism to modernism.
 - Transitional mixes the two concepts to represent the rich history and culture of the building with its new purpose and the current time (includes the concept of train carts).
 - It allows for a harmonious of the two different styles.





Architectural Finishes, and Furniture and Finishes:

- ❖ “Worn” materials are incorporated to recreate the look of the old train carts and create a rustic aesthetic.
- ❖ Furniture follows the box and wheel shape to create a visual representation of the box cart.
- ❖ The sleek, white furniture is used to create a visually pleasing design, contrasting the old, worn materials to its clean look.
- ❖ The furniture style helps to contrast itself from the warehouse.
- ❖ Using the “play” of the contrasting tones of wood, glass, and metals to create an aesthetically pleasing design, the warehouse uses the transitional style to assist it in incorporating the design and layout of the old train carts and the history of the warehouse.





AutoCAD Final Plans:

