

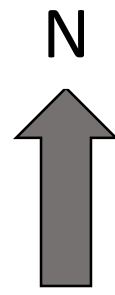
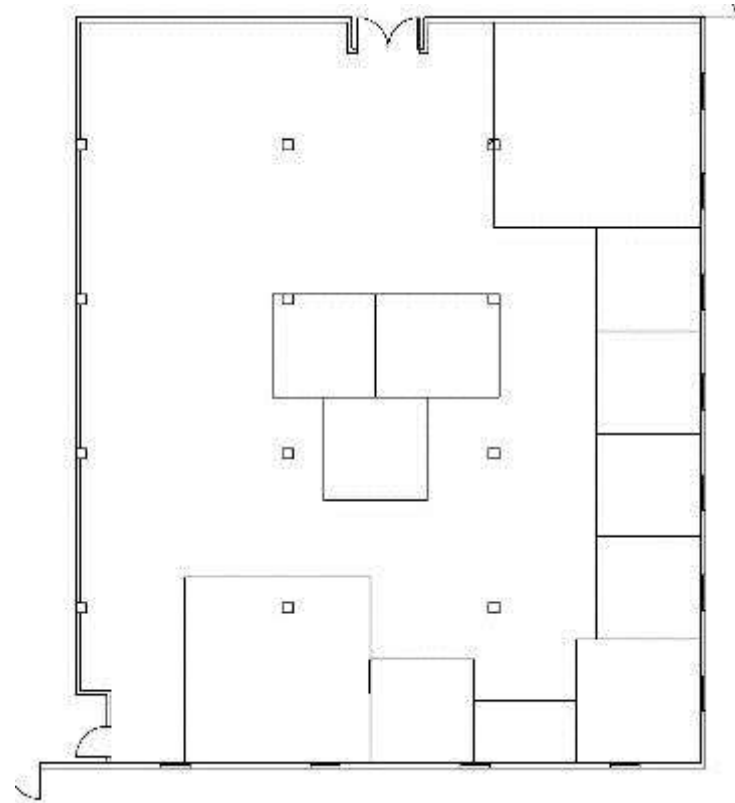
PORTFOLIO 2

Caitlin Mize

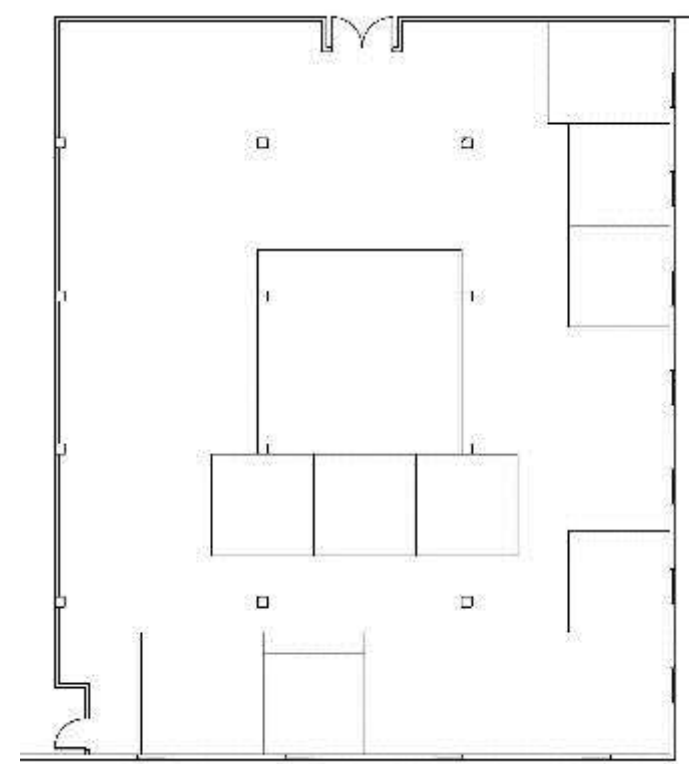
Charles Gustina

IDSN 2102

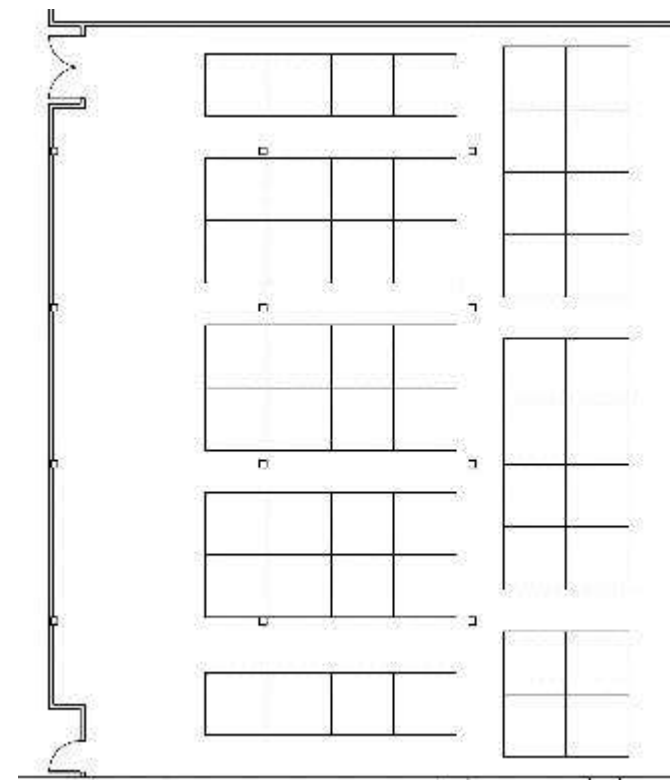
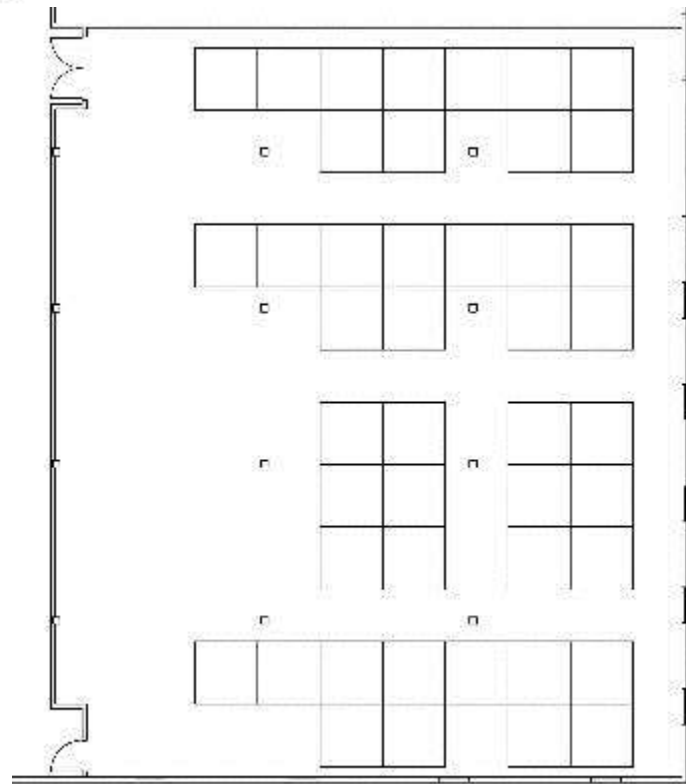
Space Plan Sketches

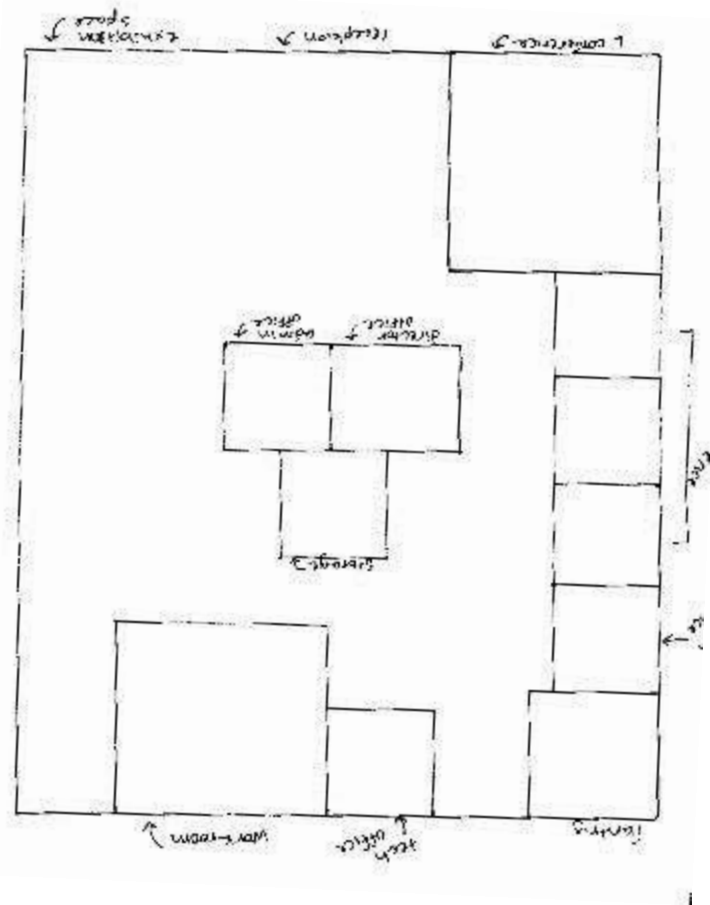


BOTTOM FLOOR

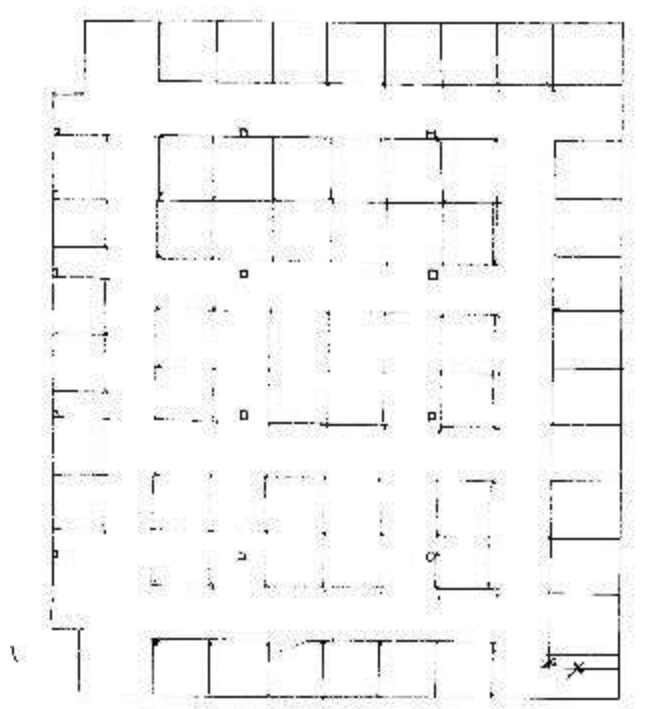
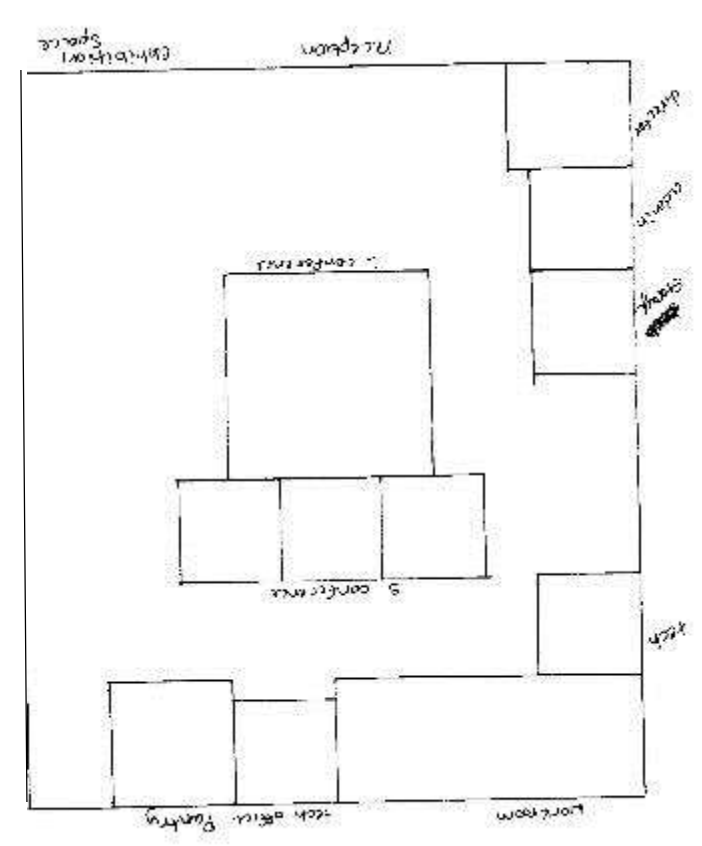


TOP FLOOR

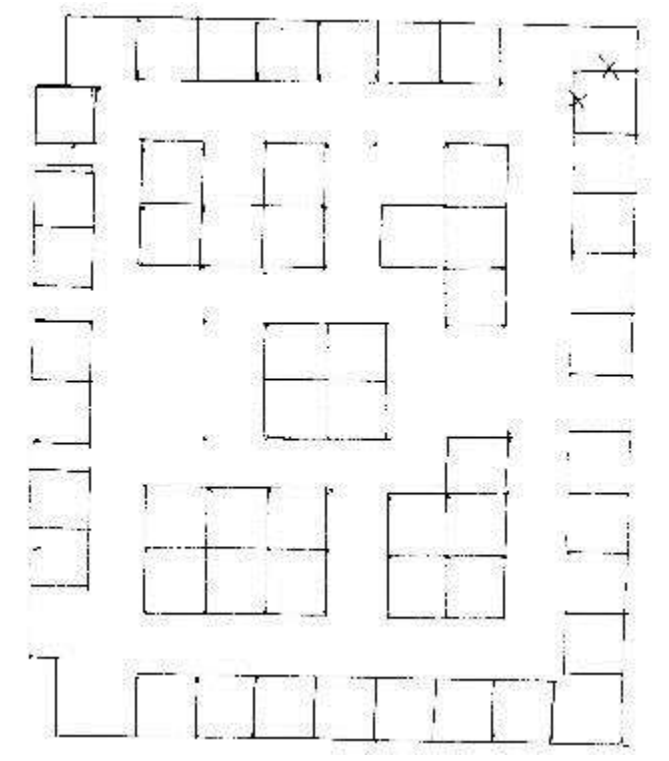




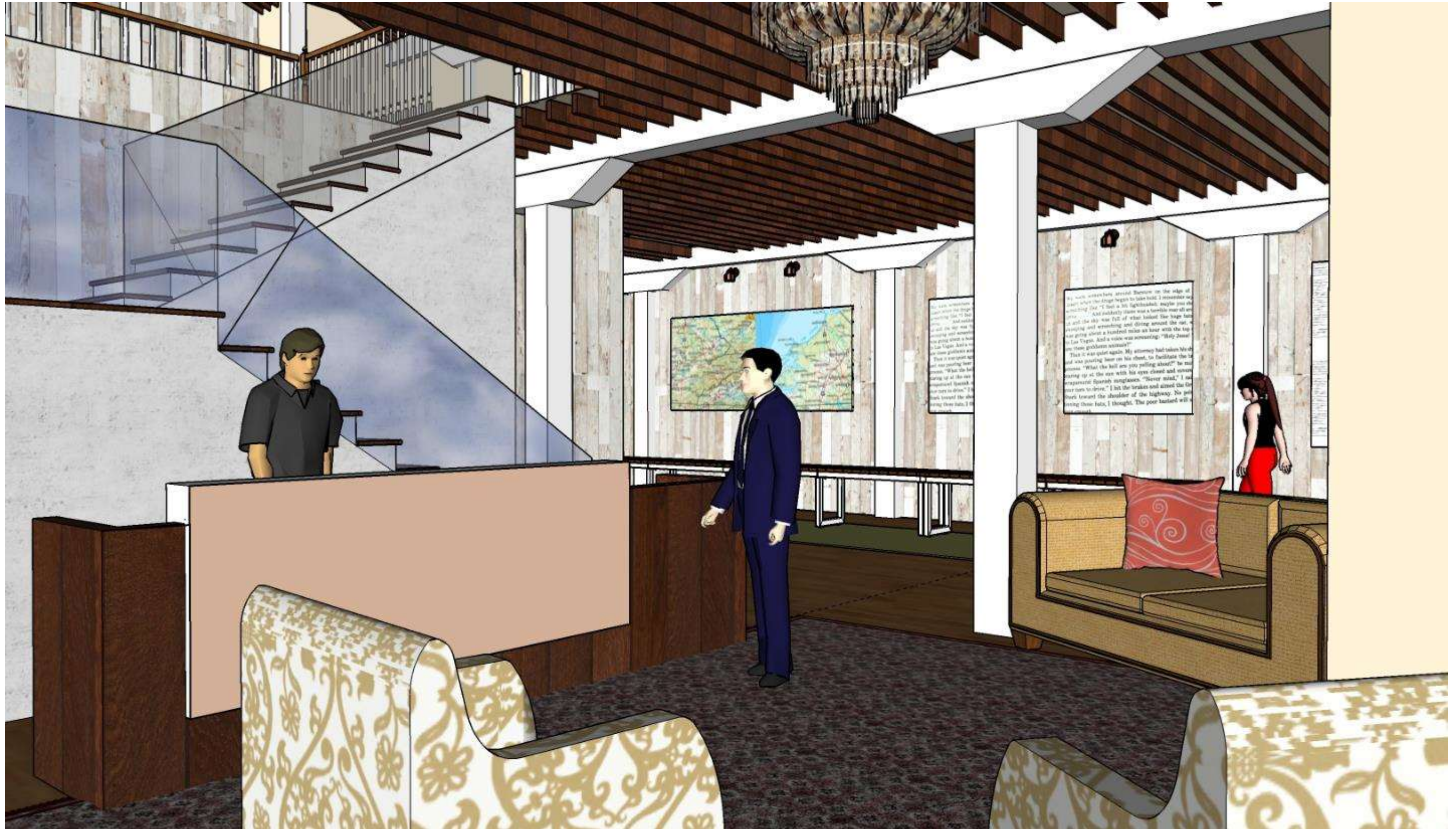
N
 ↑
 BOTTOM FLOOR



TOP FLOOR



Perspectives





As we were somewhere around Barstow on the edge of desert when the drugs began to take hold. I remember saying something like "I feel a bit lightheaded; maybe you should drive." And suddenly there was a terrible roar all around us and the sky was full of what looked like huge bats swooping and screeching and diving around the car, was going about a hundred miles an hour with the top down to Las Vegas. And a voice was screaming: "Holy Jesus! are these goddamn animals!"

Then it was quiet again. My attorney had taken his shirt and was pouring beer on his chest, to facilitate the process. "What the hell are you yelling about?" he must have been staring up at the sun with his eyes closed and covered his eyes with Spanish sunglasses. "Never mind," I said. "I hit the brakes and aimed the Grunk toward the shoulder of the highway. No point in losing these hats, I thought. The poor bastard will be sun struck."

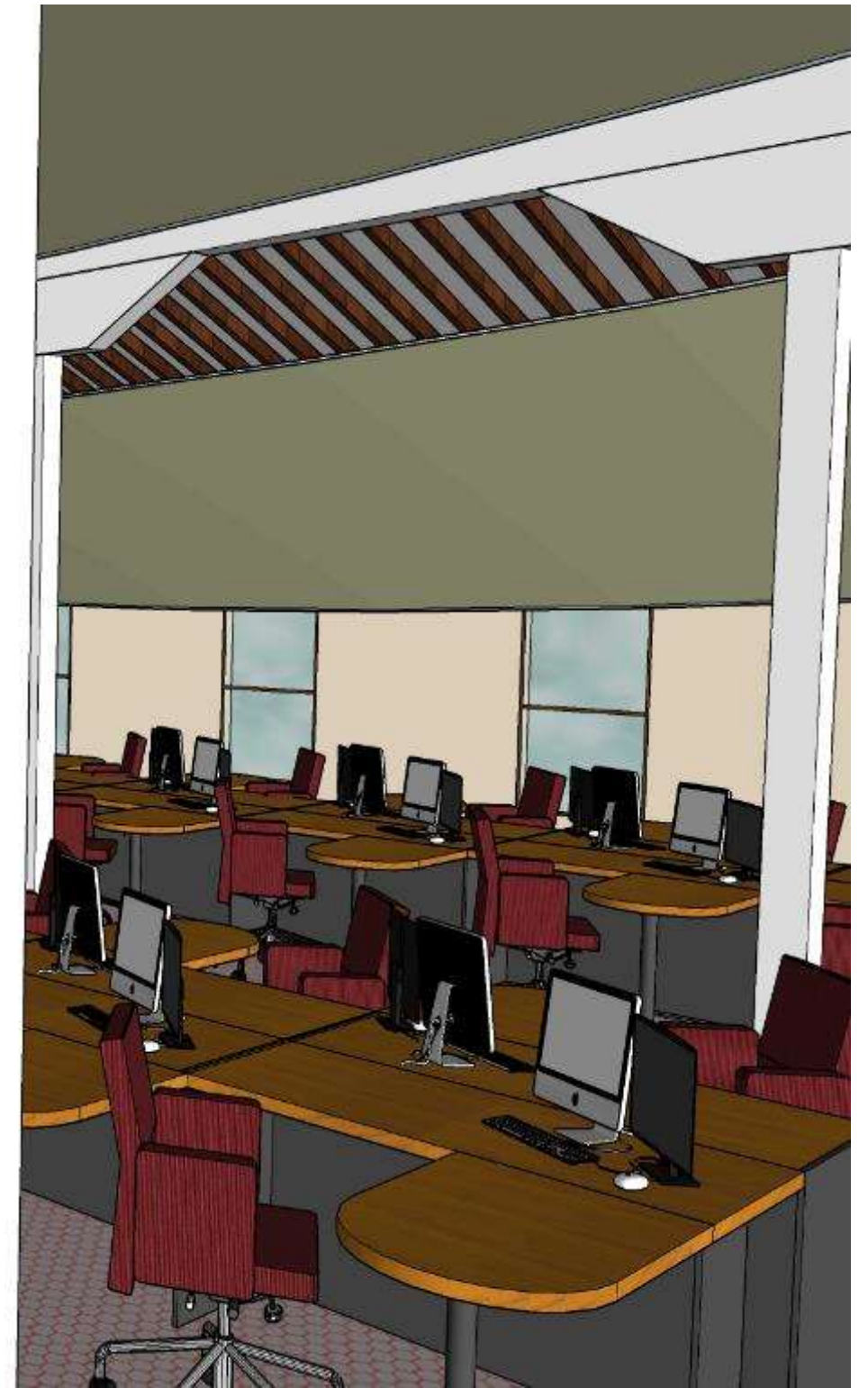
We were somewhere around Barstow on the edge of desert when the drugs began to take hold. I remember saying something like "I feel a bit lightheaded; maybe you should drive." And suddenly there was a terrible roar all around us and the sky was full of what looked like huge bats swooping and screeching and diving around the car, was going about a hundred miles an hour with the top down to Las Vegas. And a voice was screaming: "Holy Jesus! are these goddamn animals!"

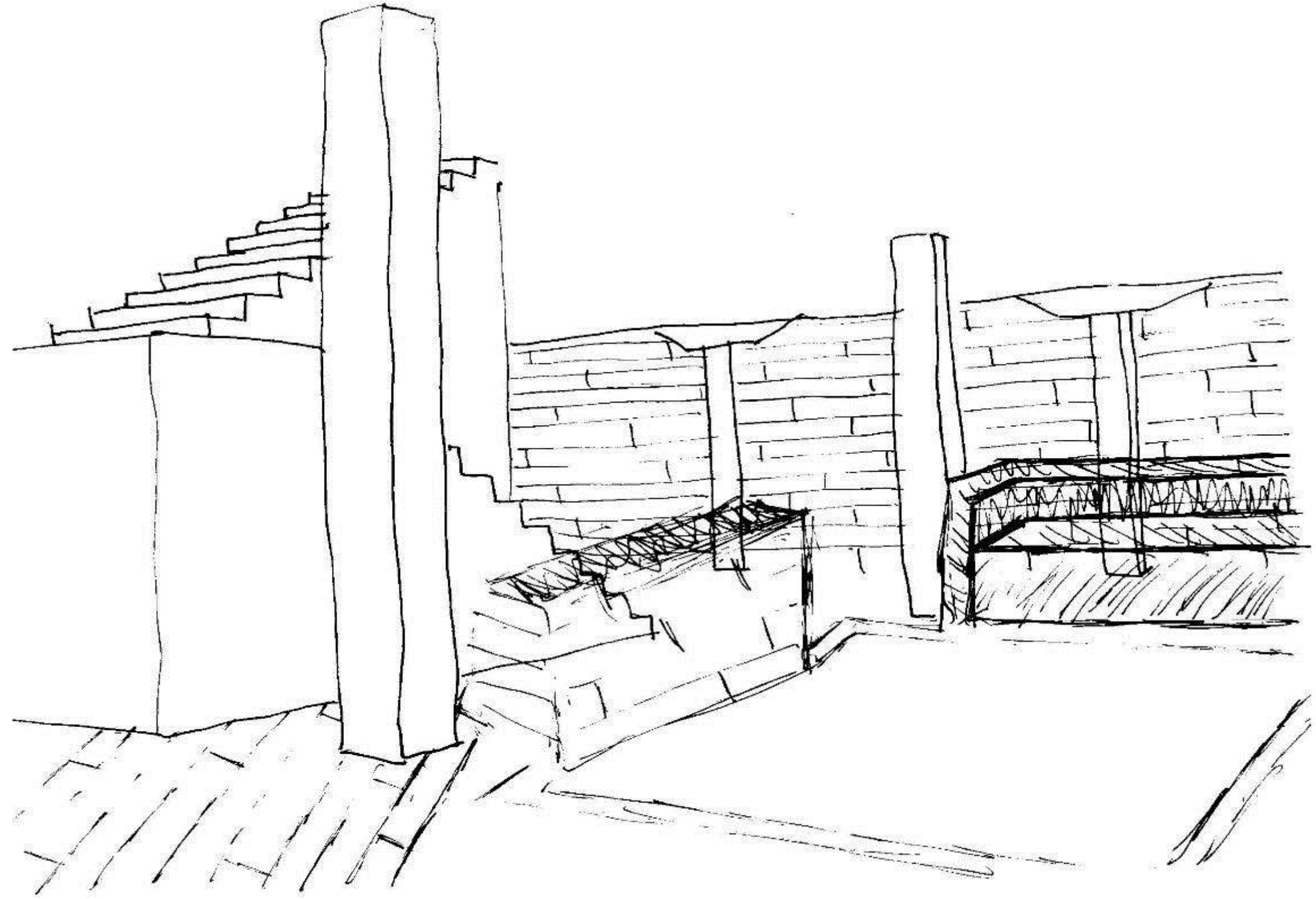
Then it was quiet again. My attorney had taken his shirt and was pouring beer on his chest, to facilitate the process. "What the hell are you yelling about?" he must have been staring up at the sun with his eyes closed and covered his eyes with Spanish sunglasses. "Never mind," I said. "I hit the brakes and aimed the Grunk toward the shoulder of the highway. No point in losing these hats, I thought. The poor bastard will be sun struck."

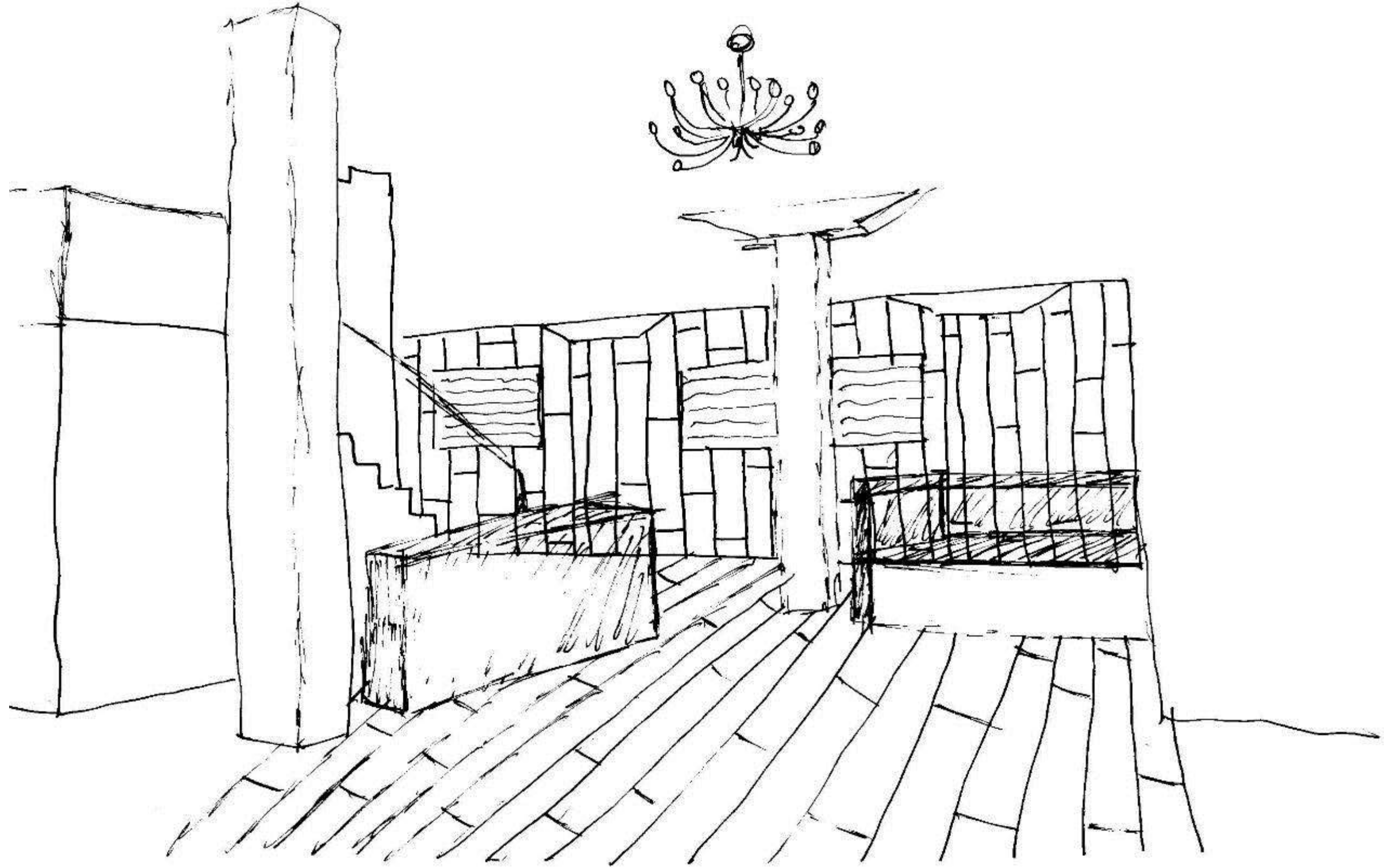
As we were somewhere around Barstow on the edge of desert when the drugs began to take hold. I remember saying something like "I feel a bit lightheaded; maybe you should drive." And suddenly there was a terrible roar all around us and the sky was full of what looked like huge bats swooping and screeching and diving around the car, was going about a hundred miles an hour with the top down to Las Vegas. And a voice was screaming: "Holy Jesus! are these goddamn animals!"

Then it was quiet again. My attorney had taken his shirt and was pouring beer on his chest, to facilitate the process. "What the hell are you yelling about?" he must have been staring up at the sun with his eyes closed and covered his eyes with Spanish sunglasses. "Never mind," I said. "I hit the brakes and aimed the Grunk toward the shoulder of the highway. No point in losing these hats, I thought. The poor bastard will be sun struck."









Concept

The most interesting part about this project is that it is set in rural Greenville. The country is such an interesting area where you don't see as many big business buildings as you would in the city.

You should be able to walk into this space and know automatically that it is a building in Greenville North Carolina, because it uses the natural rustic style the building already possessed.

Architecture in eastern NC has a rustic, industrial style. This building bring the outside of the building in doors with its use of wood.

This space incorporates the industrial style with a touch of modernism.

The building brings modernism through concrete, glass and some color.

Reds and yellows contrast well with the wood and do not overwhelm your eyes as you looked in.

Modernism is also incorporated through wide open spaces.

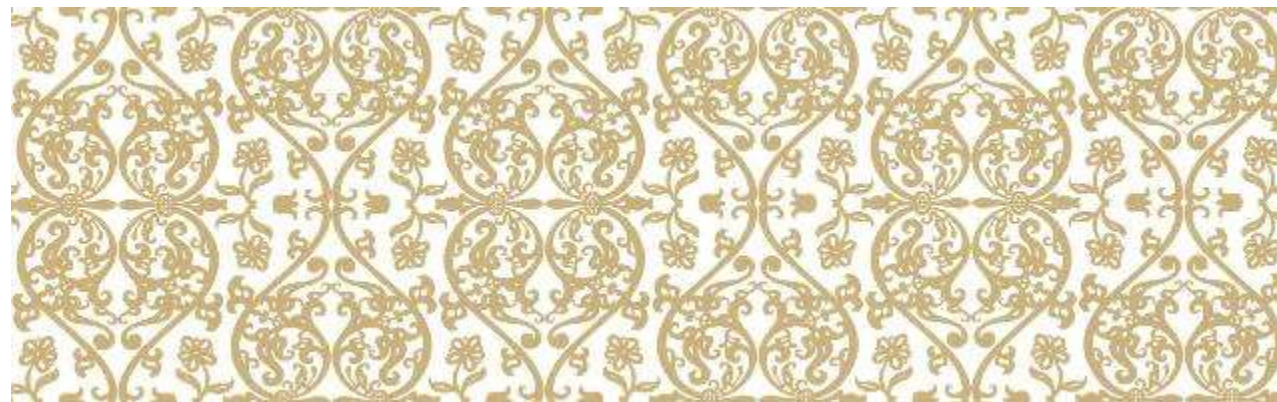


www.alamy.com - D260TM

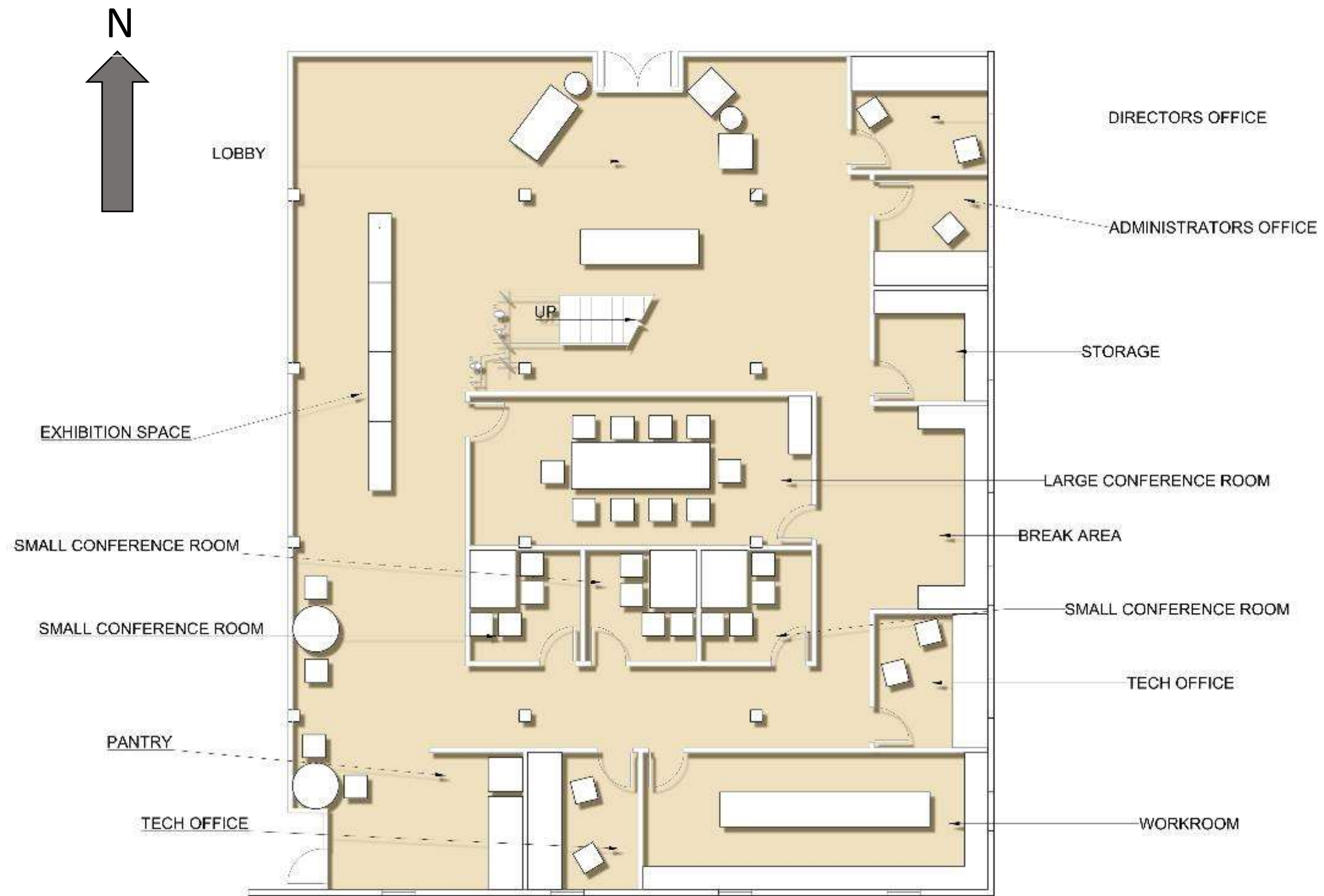


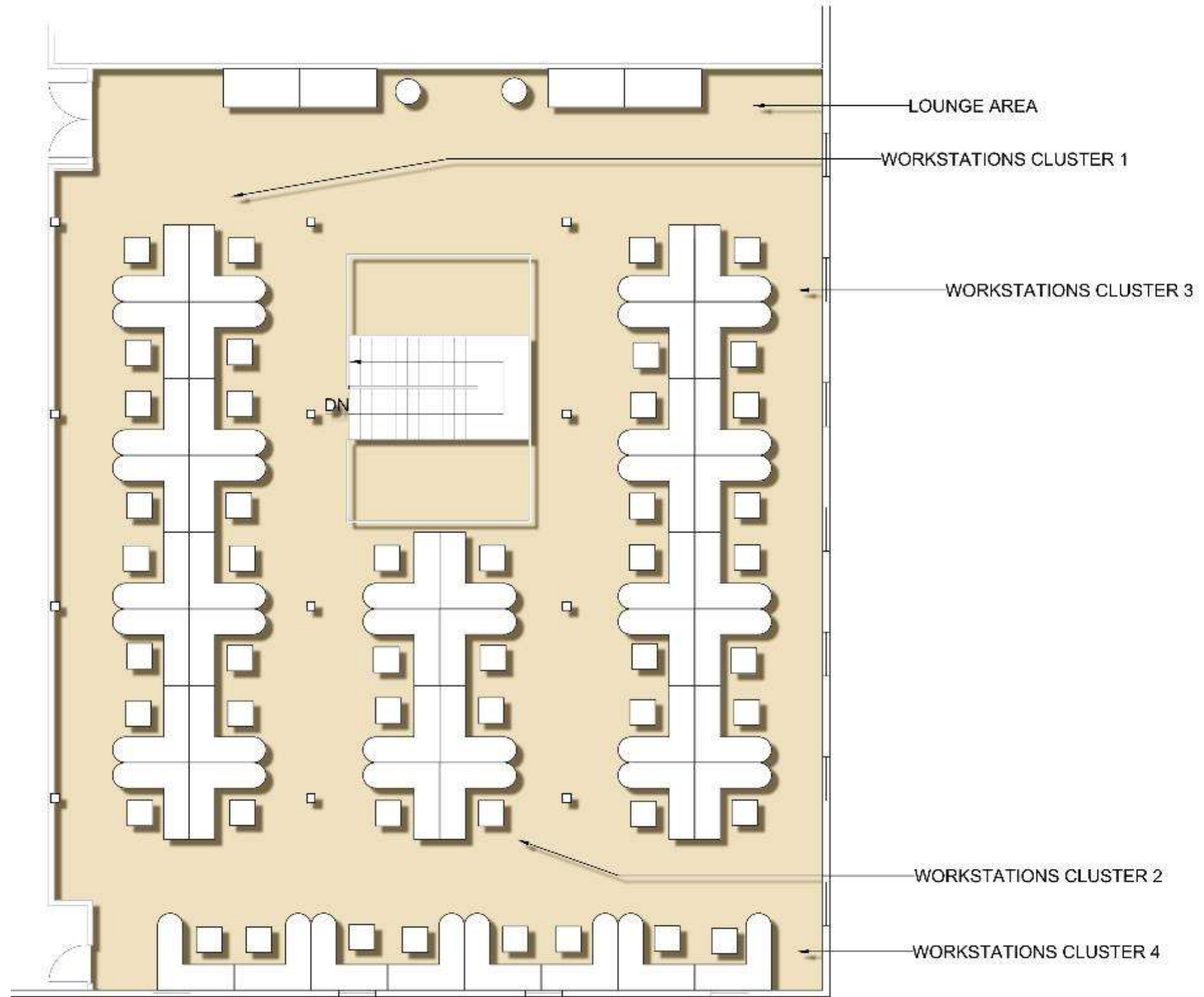
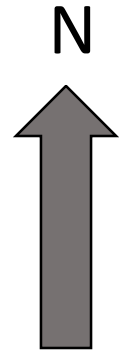
Architectural Finishes

Red and yellows
Lots of patterns
Different types of wood
Concrete
Glass



Final Plan





LOUNGE AREA

WORKSTATIONS CLUSTER 1

WORKSTATIONS CLUSTER 3

DN

WORKSTATIONS CLUSTER 2

WORKSTATIONS CLUSTER 4