

ANNA NICHOLS

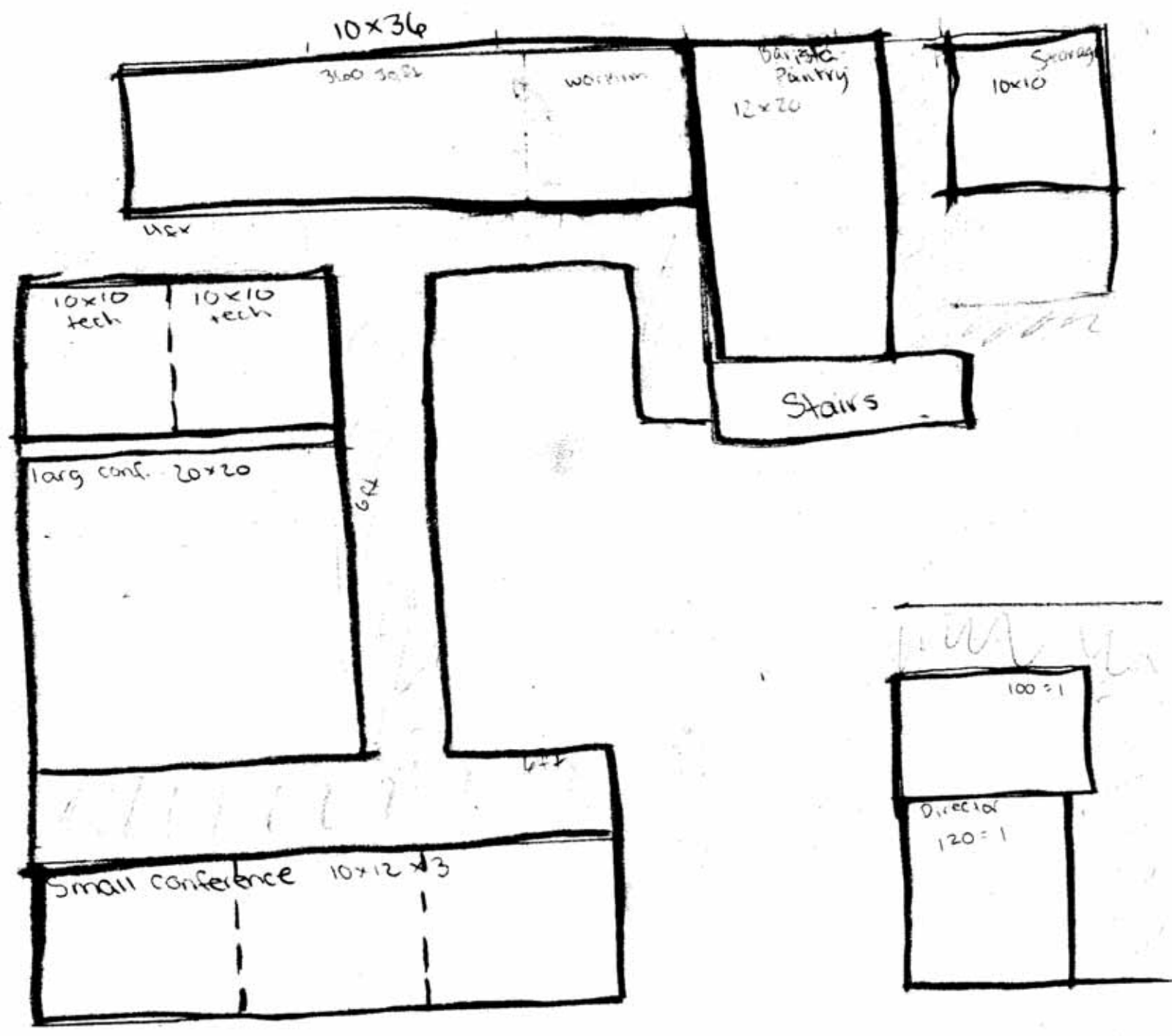
IDSN 2102

PROFESSOR GUSTINA

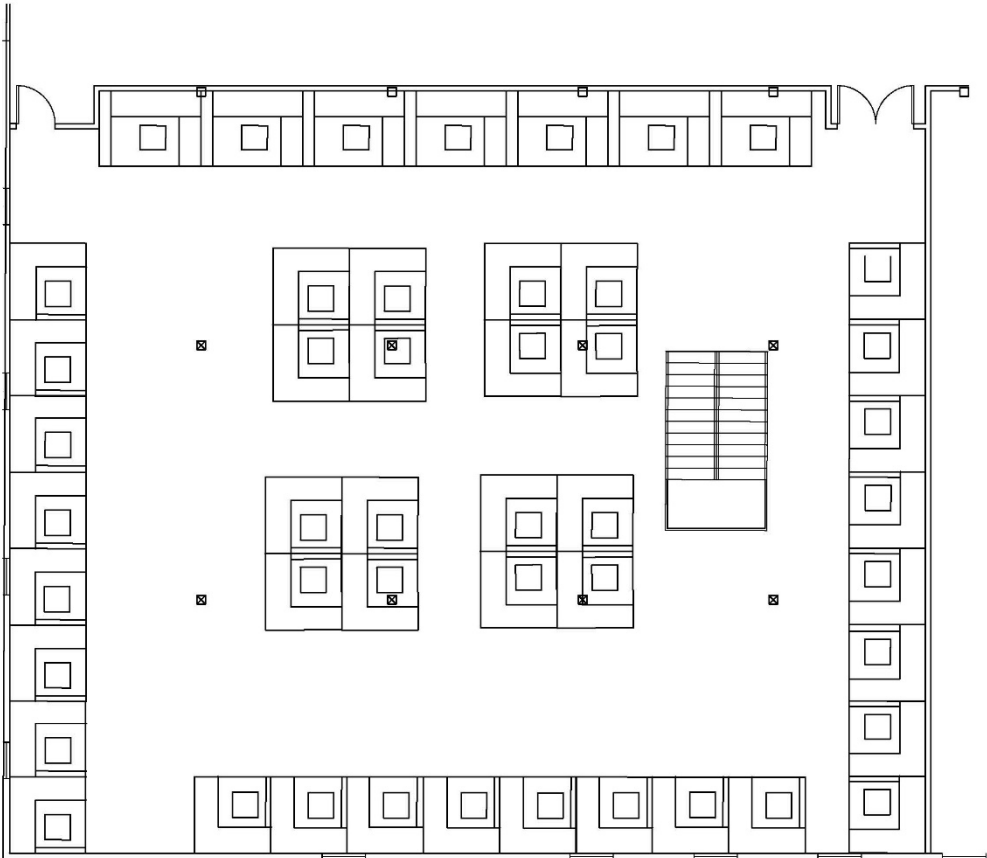
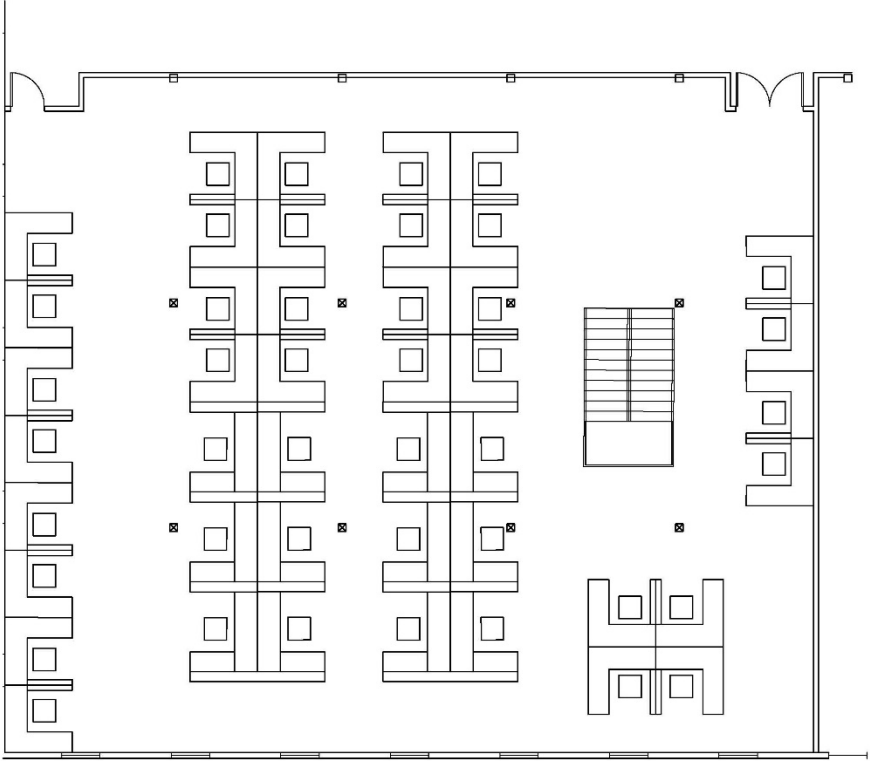
FALL 2017

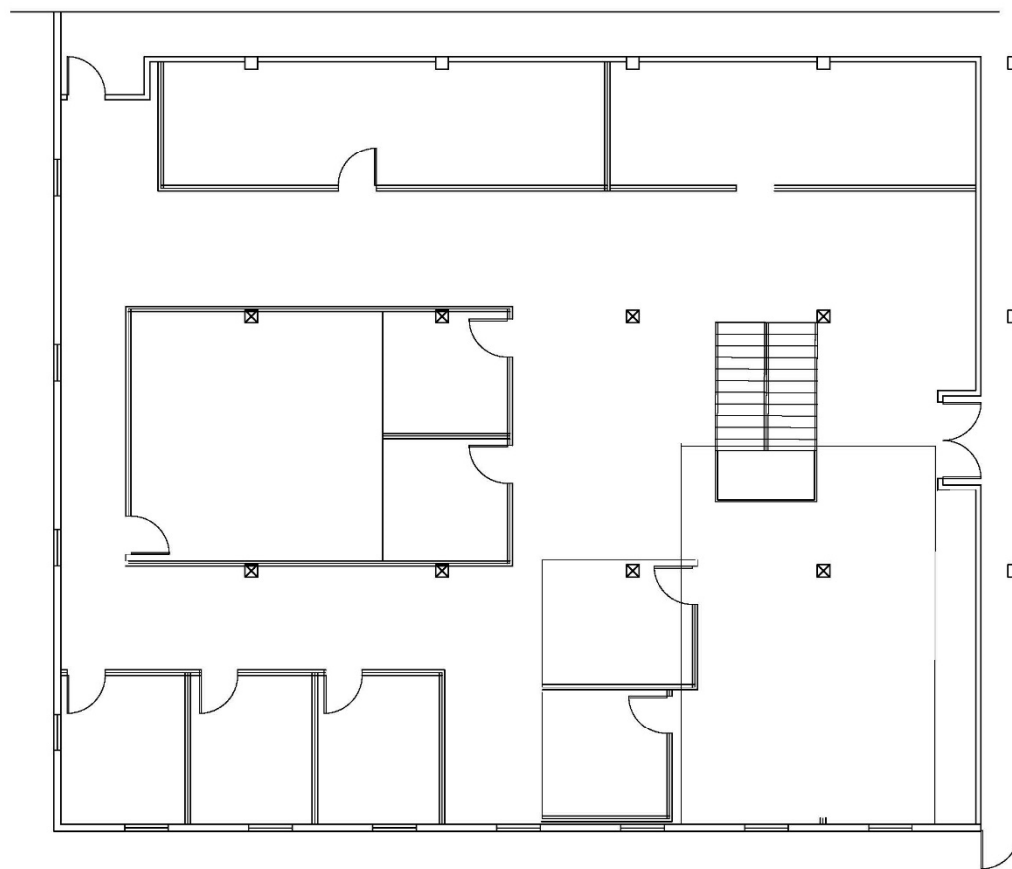
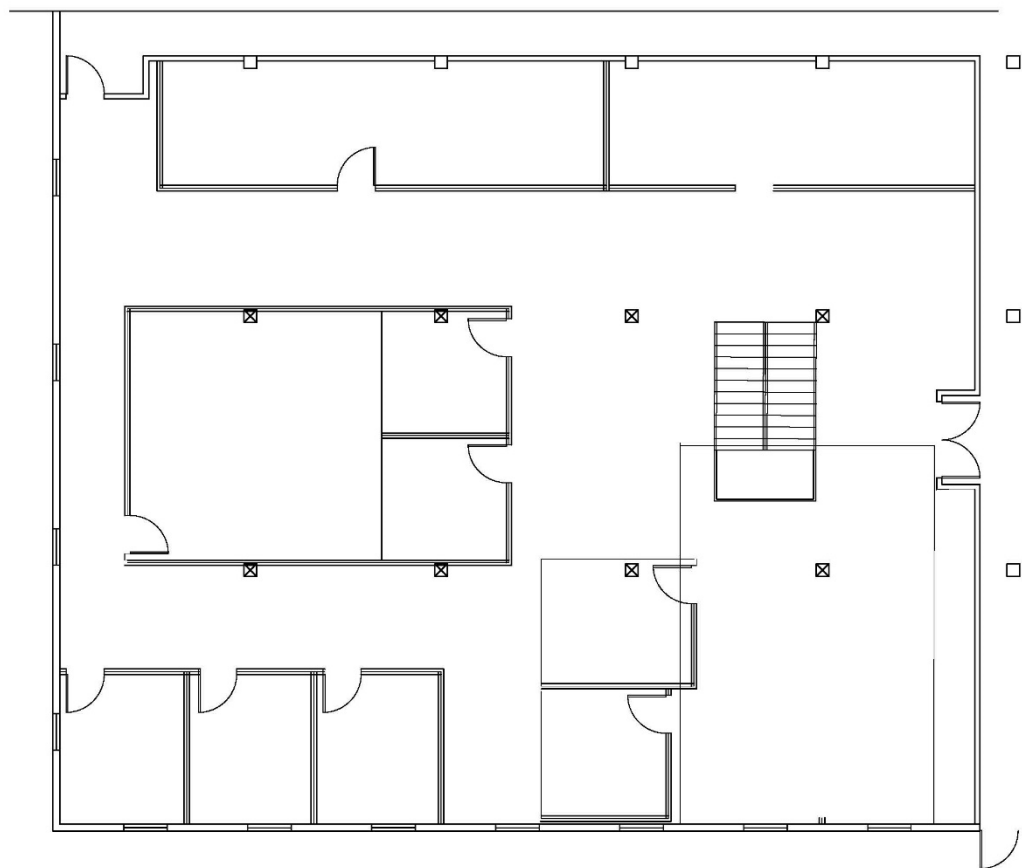
SPACE PLANNING HAND SKETCHES





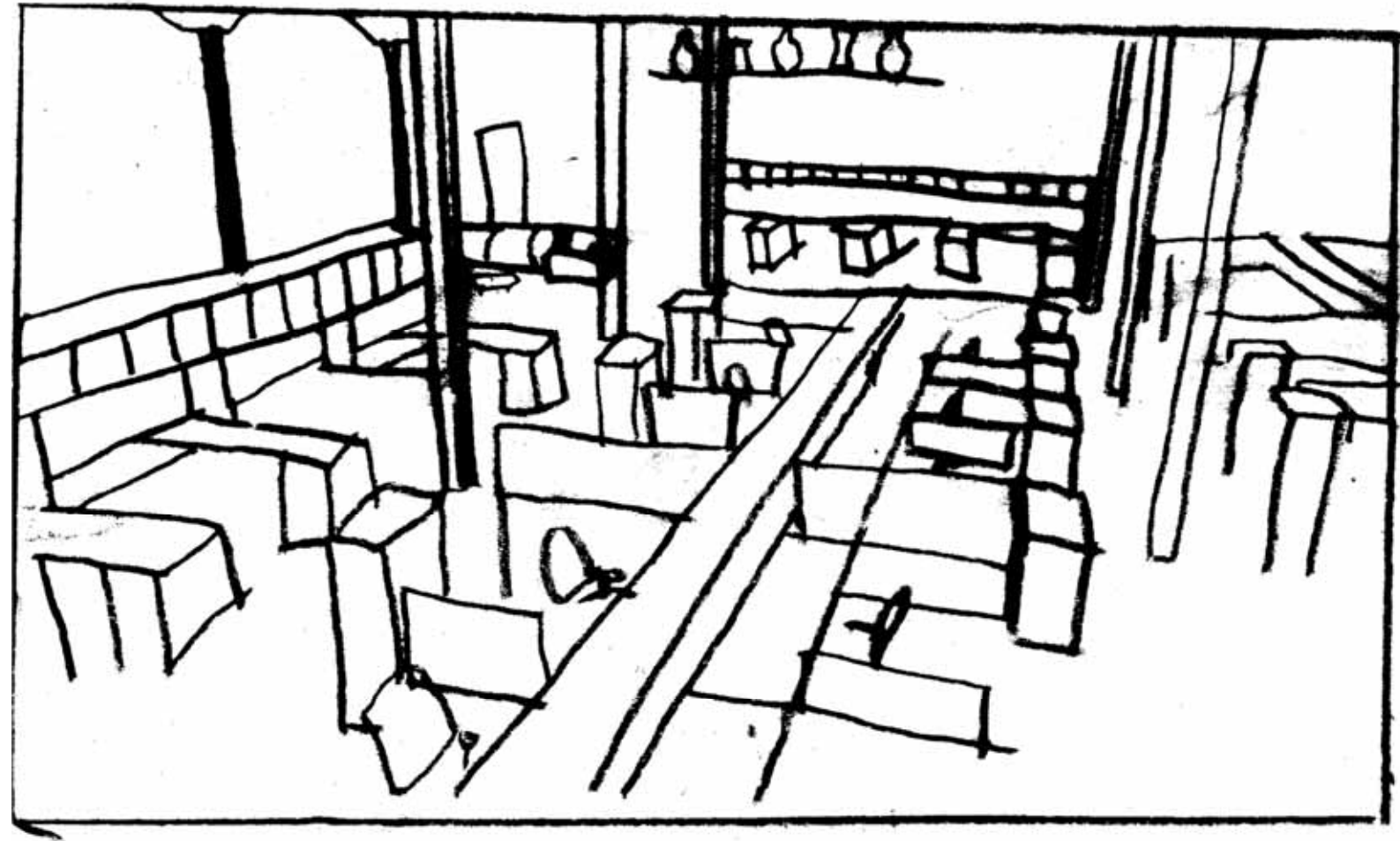
SPACE PLAN SKETCHES



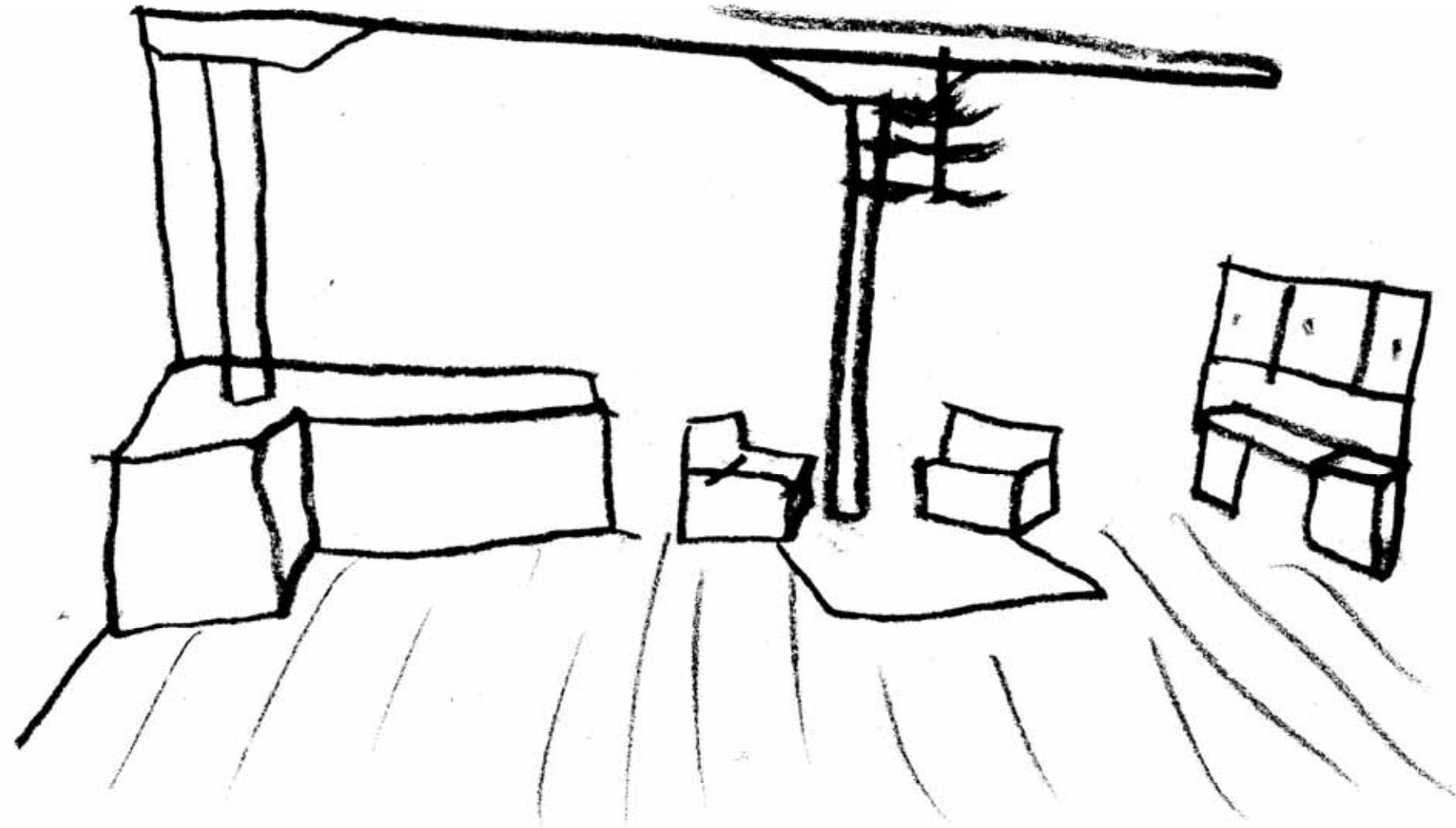


PERSPECTIVE HAND SKETCHES

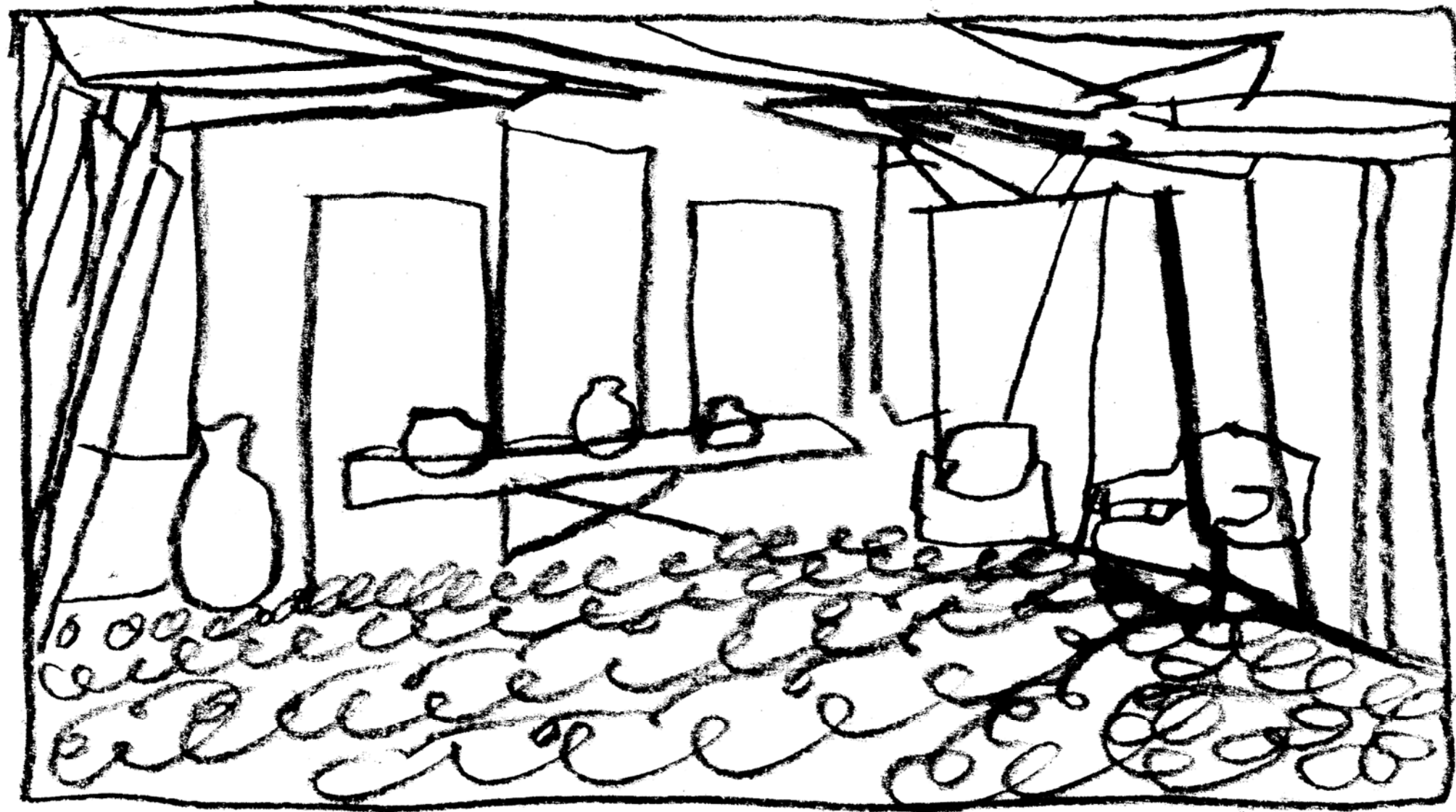
WORK SPACE



BARISTA/PANTRY



EXHIBITION



STAIRS/ENTRANCE



PERSPECTIVE- SKETCHUP

WORK SPACE



BARISTA/PANTRY



EXHIBITION



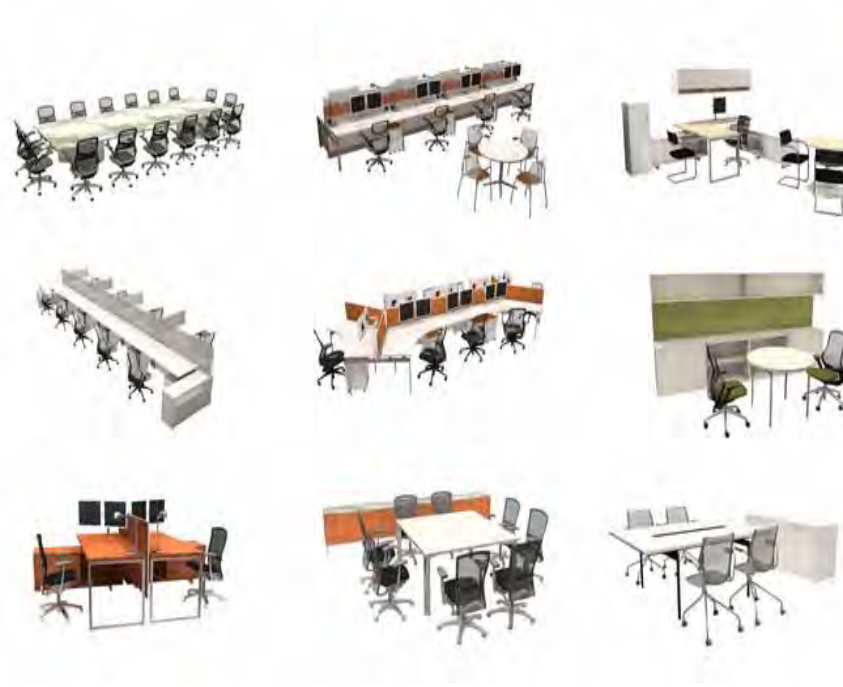
STAIRS/ENTRANCE



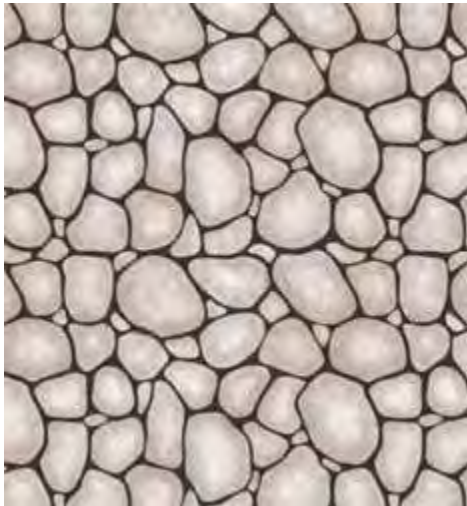
CONCEPT



- ✚ POTTERY IN THE COASTAL SOUTH
- ✚ CLAY FOR THE POTTERY WAS TEMPERED WITH CRUSHED ROCK
- ✚ POTTERY WAS CREATED WITH A VARIETY OF PATTERNS (EX. WAVY LINES)
- ✚ POTTERY WAS BRUSHED WITH RED OCHRE
- ✚ USING RED TO ILLUSTRATE POTTERY
- ✚ BLUE TO ILLUSTRATE COLOR ON POTS, AND THE OCEAN



FURNITURE AND INSPIRATION



FINAL PLANS

