

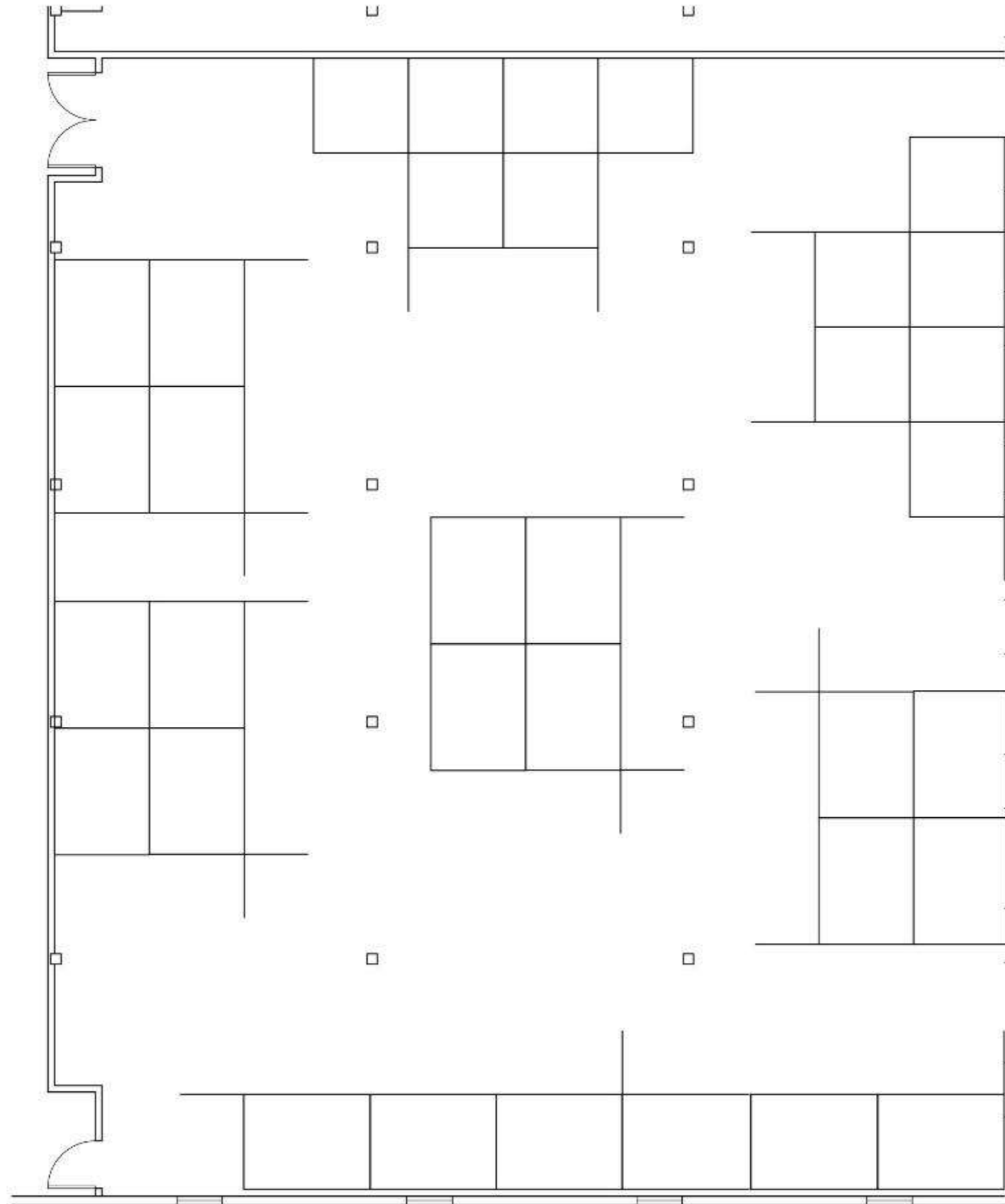


PORTFOLIO 2

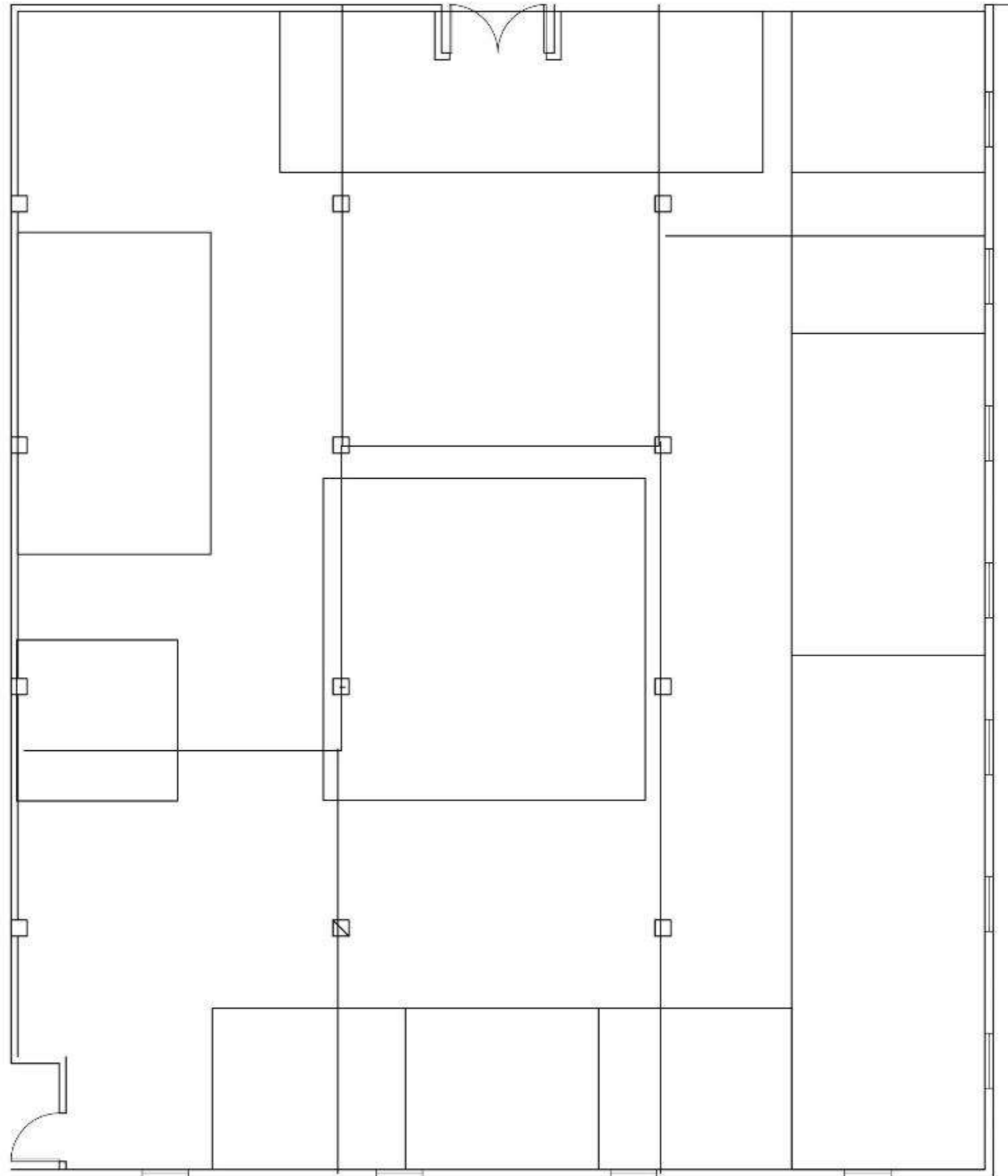
By: Cara Owsley

IDSN 2102, FALL 2017
EAST CAROLINA UNIVERSITY

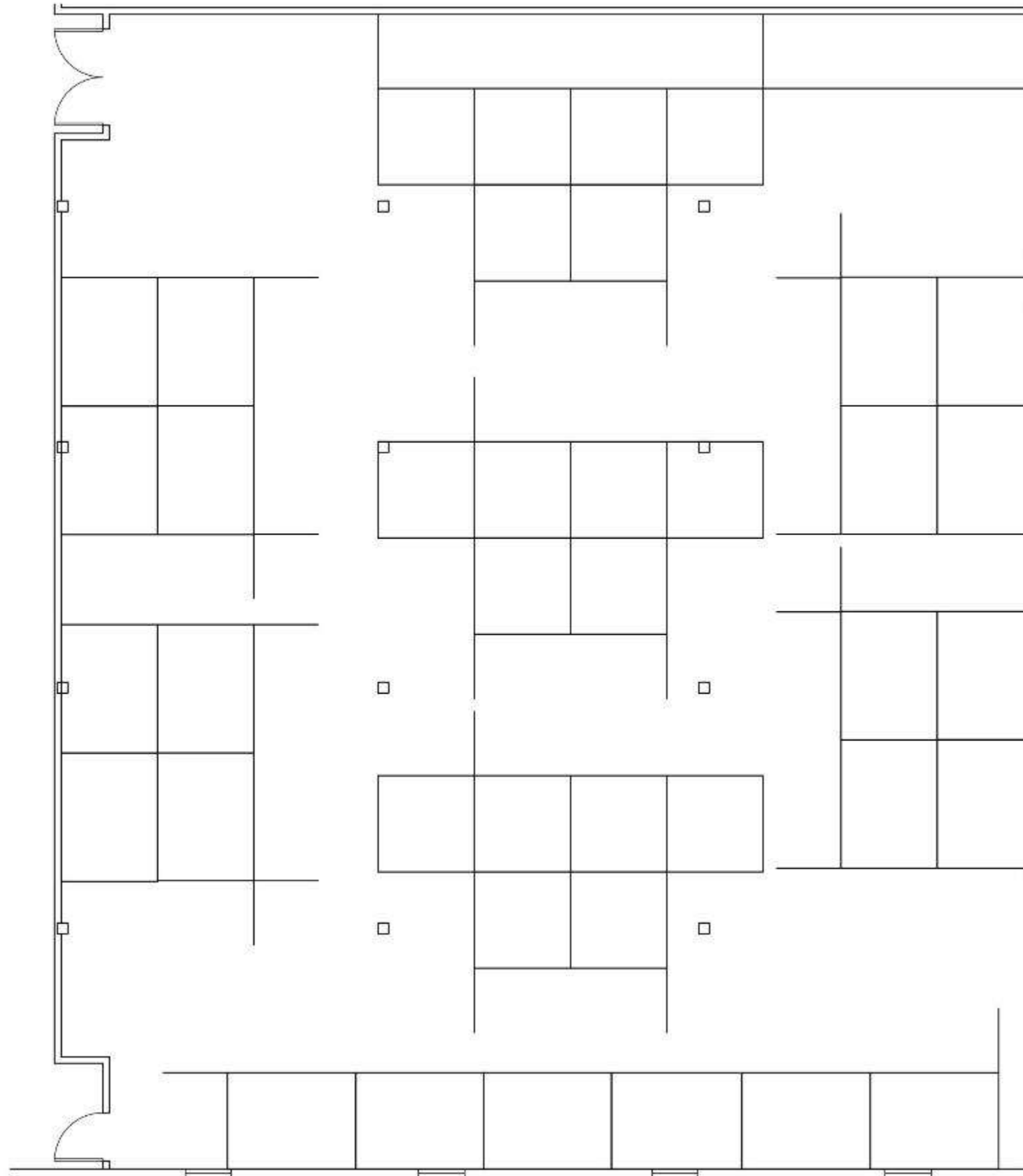
Space Plan Sketches
AutoCad



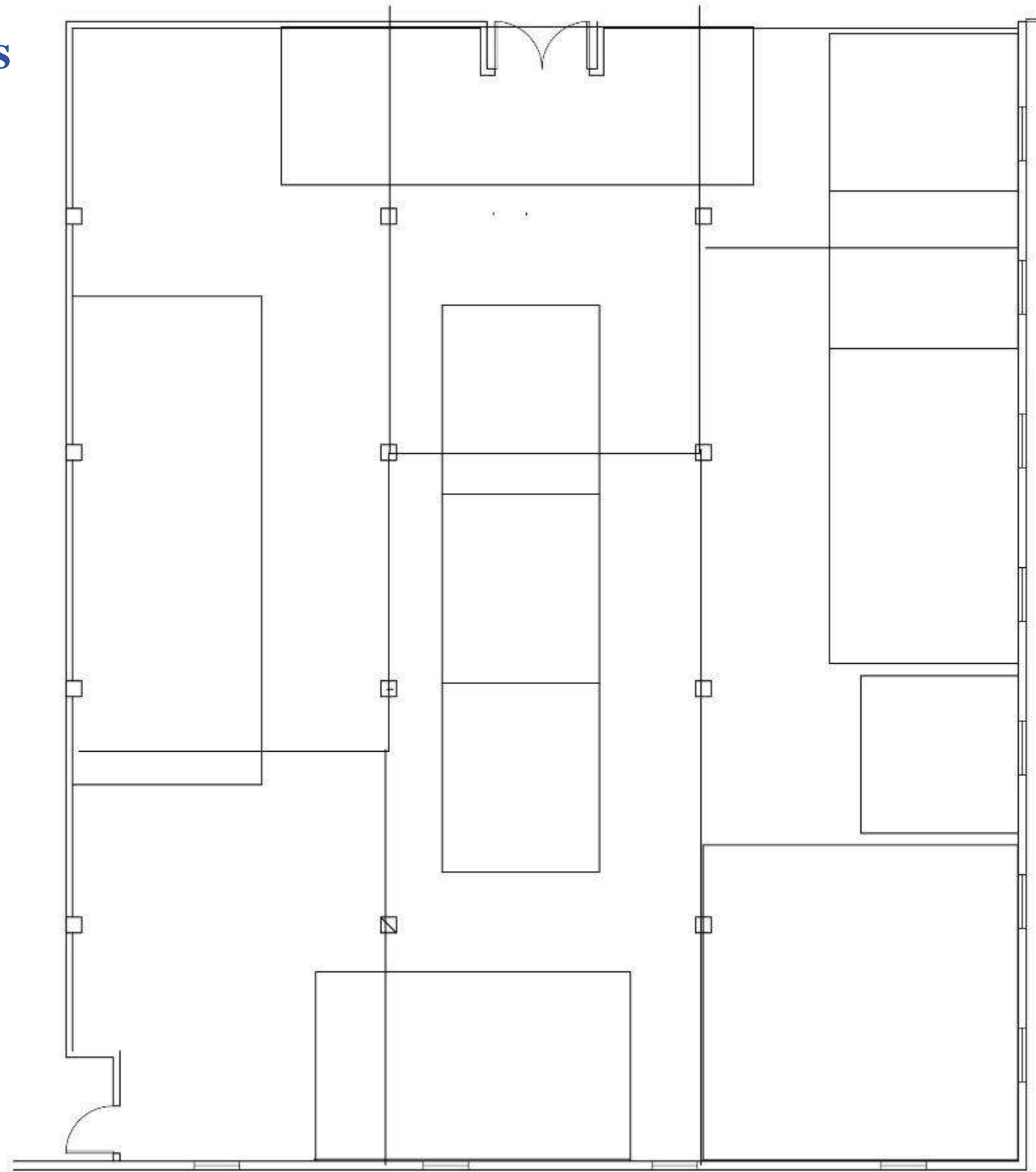
Space Plan Sketches
AutoCad



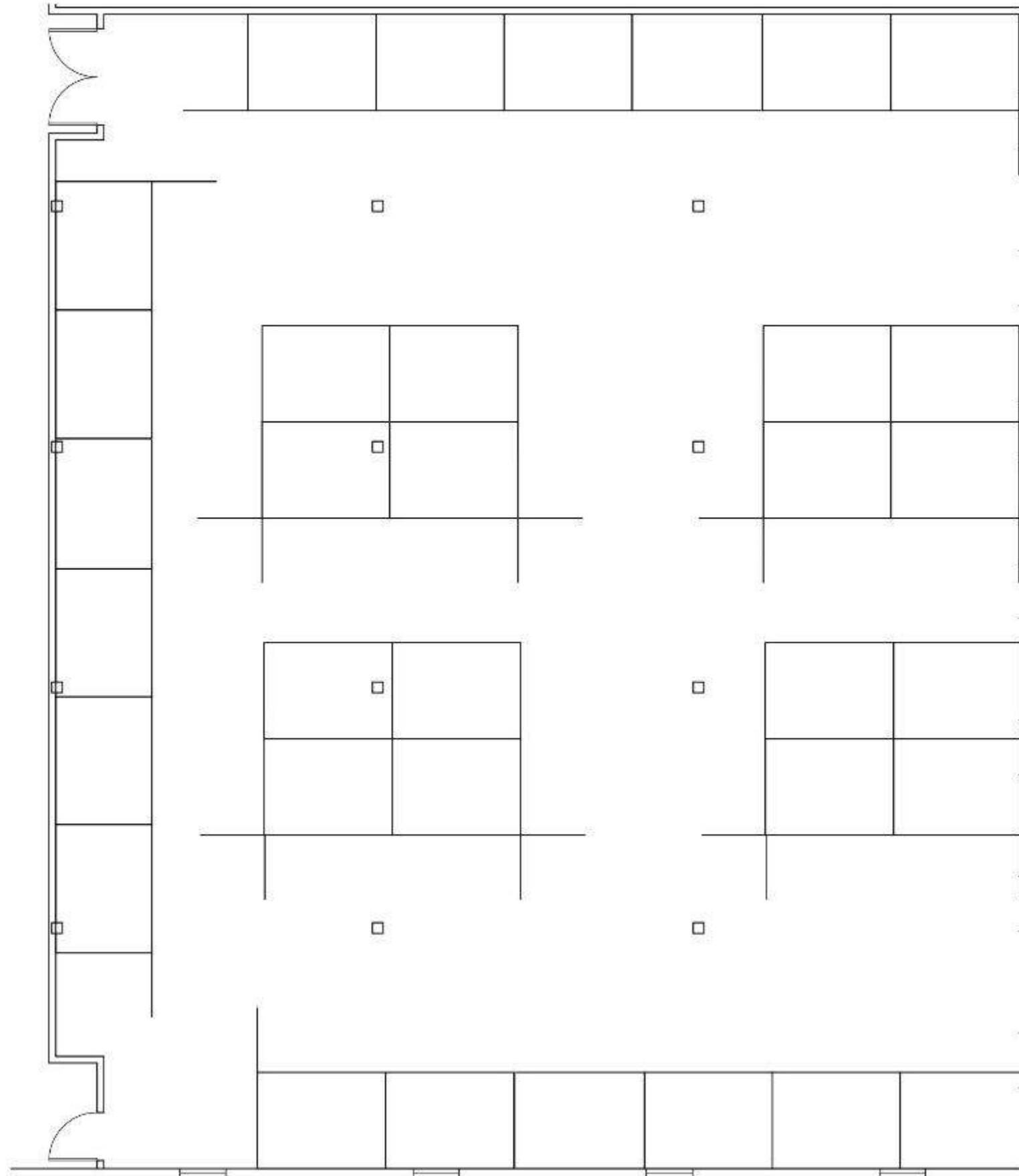
Space Plan Sketches
AutoCad



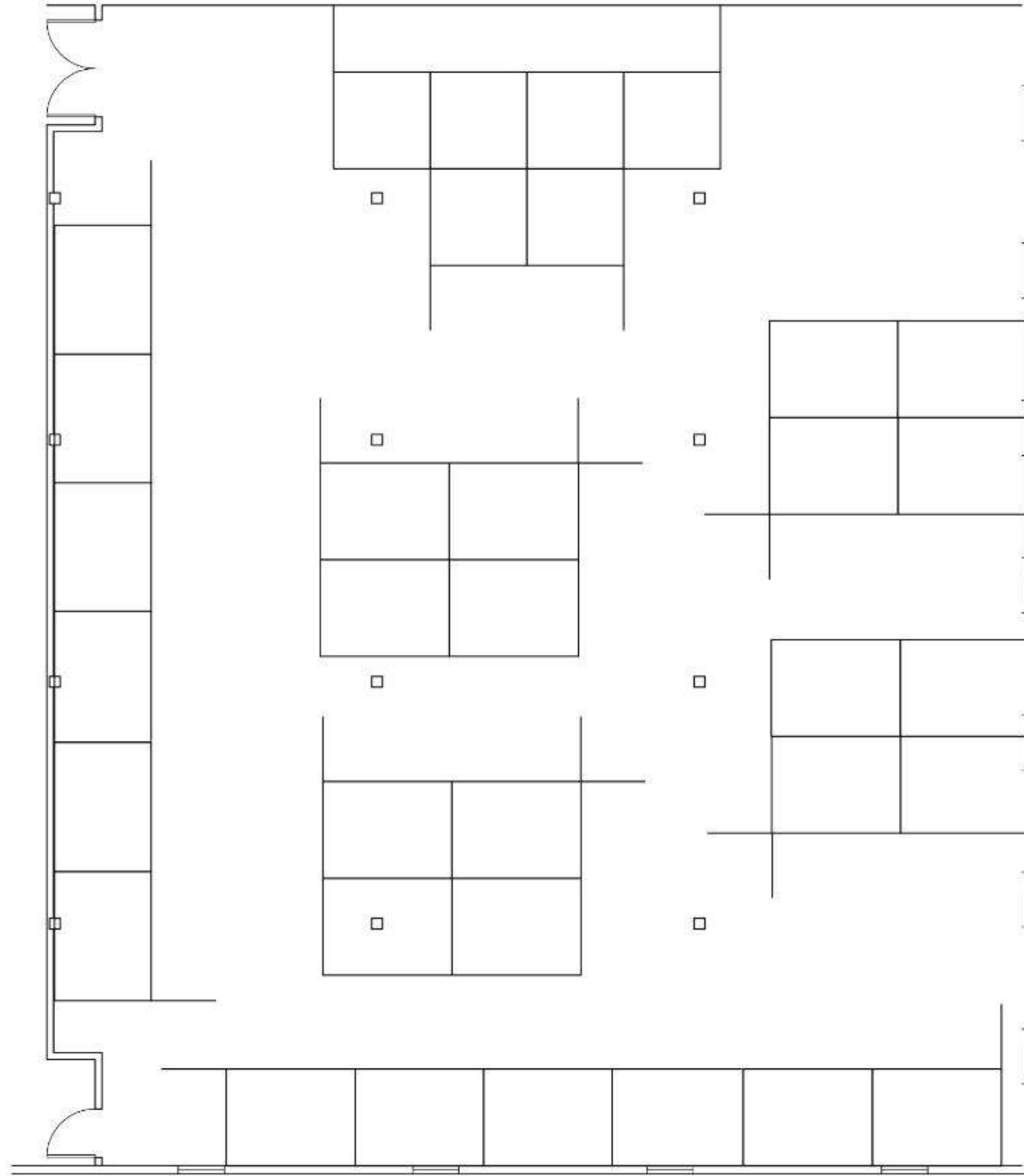
Space Plan Sketches
AutoCad



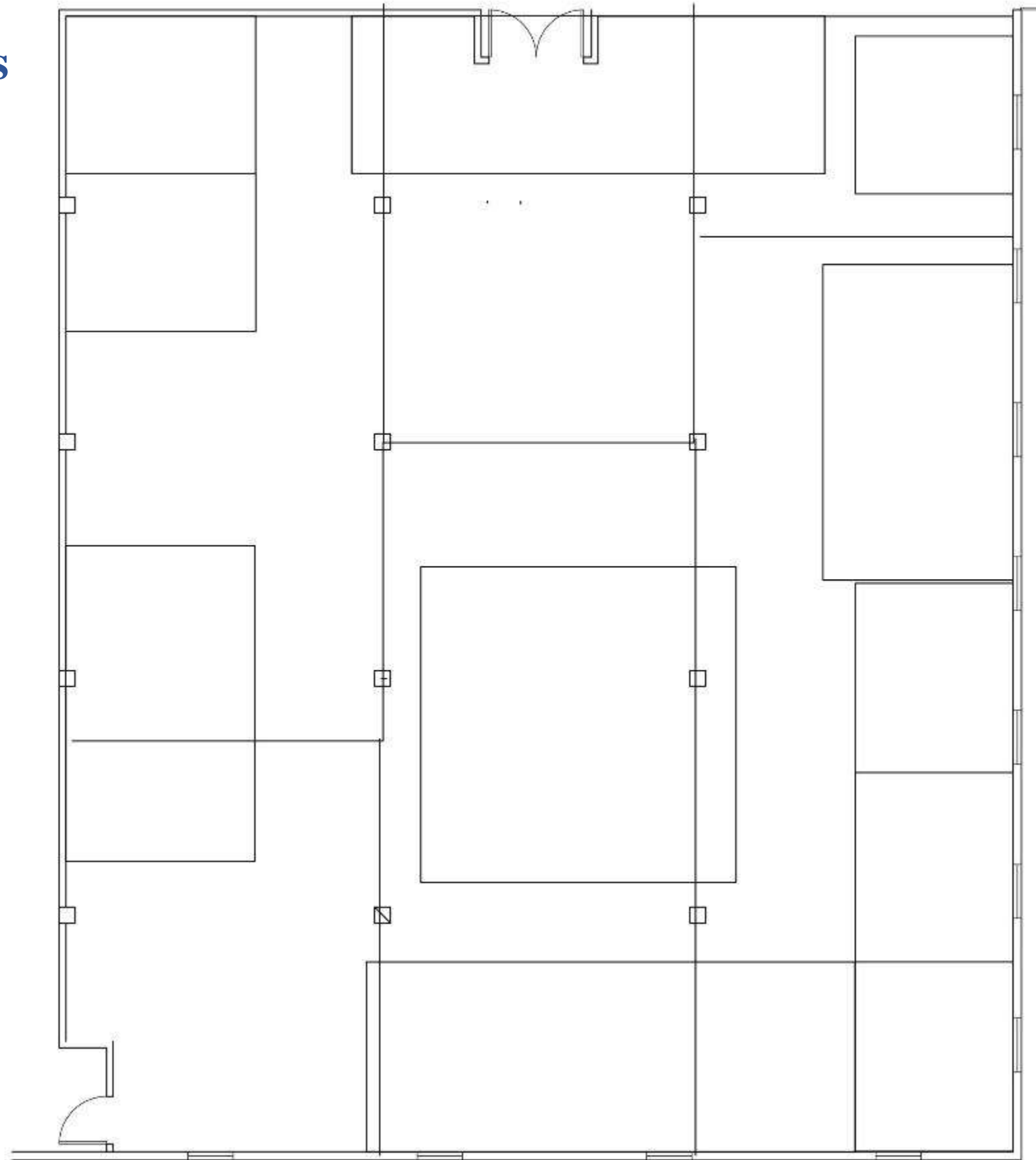
Space Plan Sketches
AutoCad



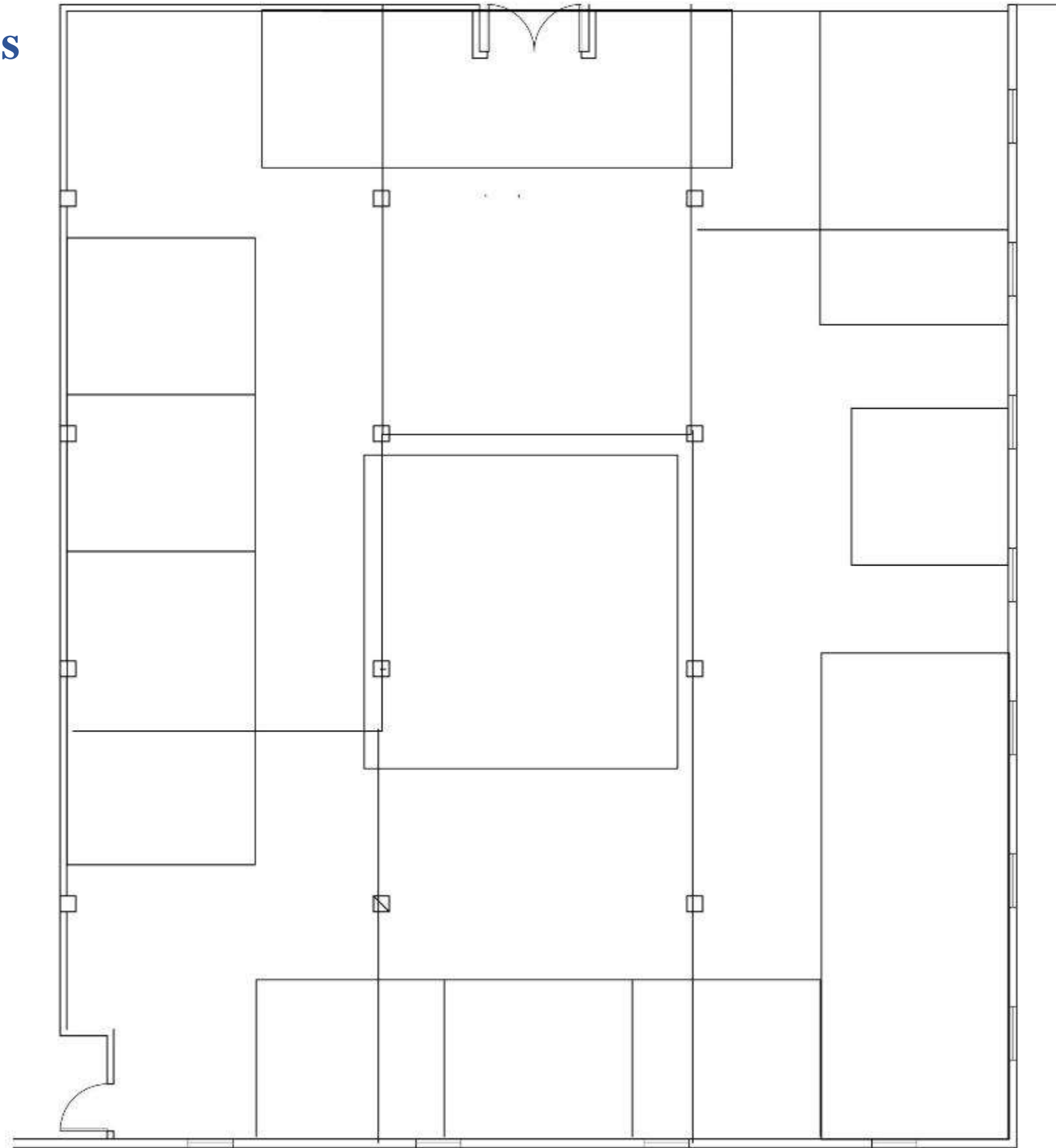
Space Plan Sketches
AutoCad



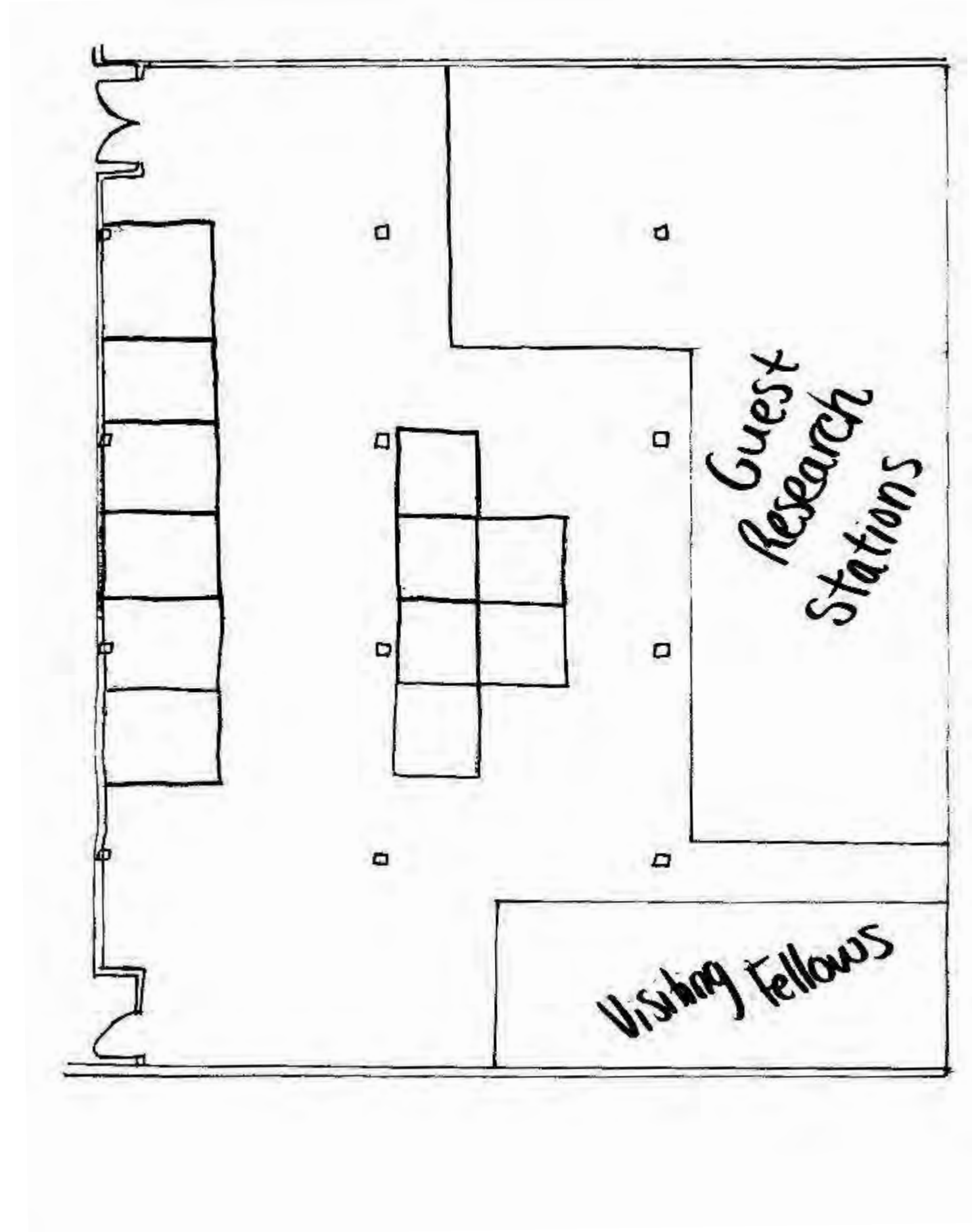
Space Plan Sketches
AutoCad



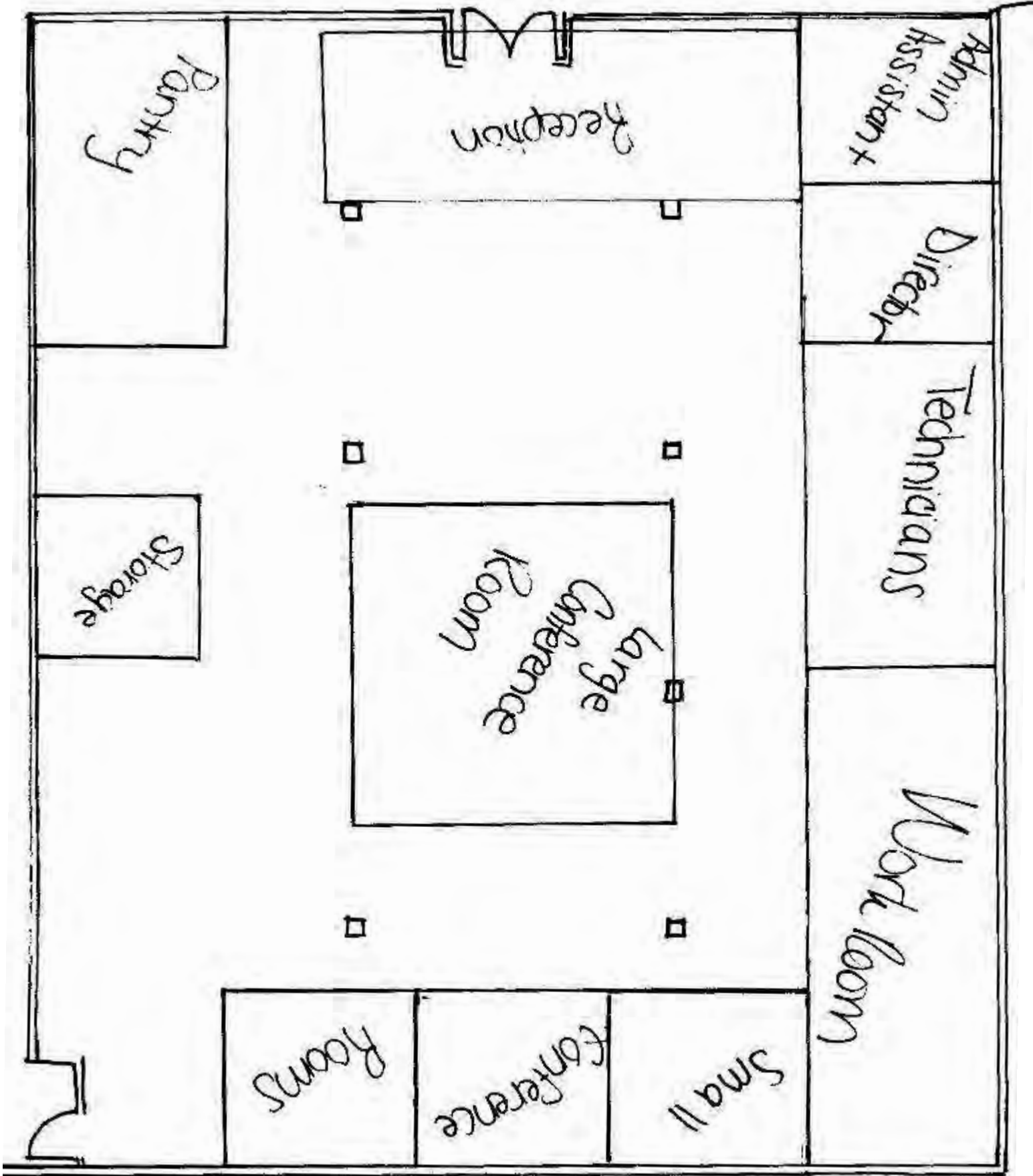
Space Plan Sketches



Space Plan Sketches

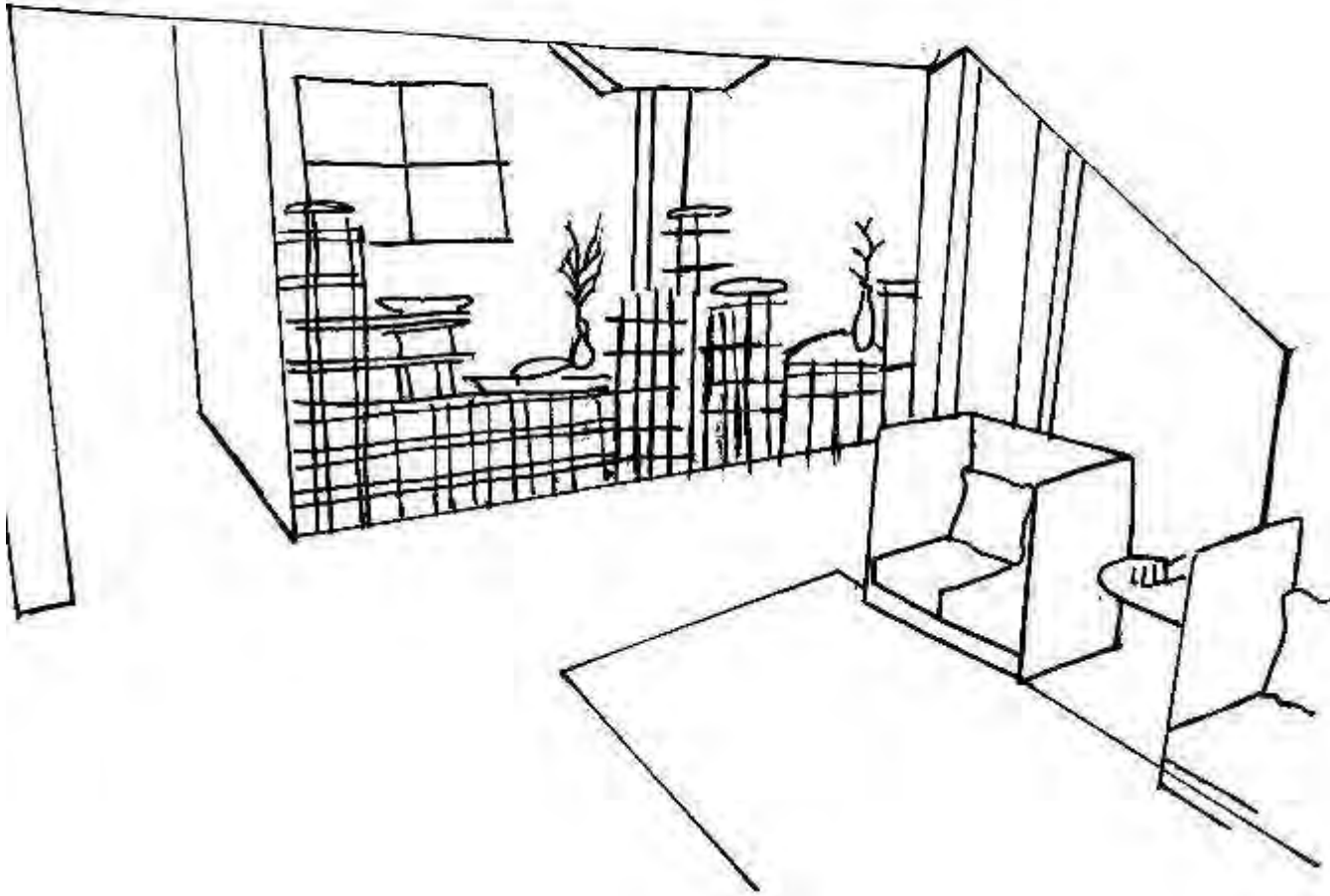


Space Plan Sketches

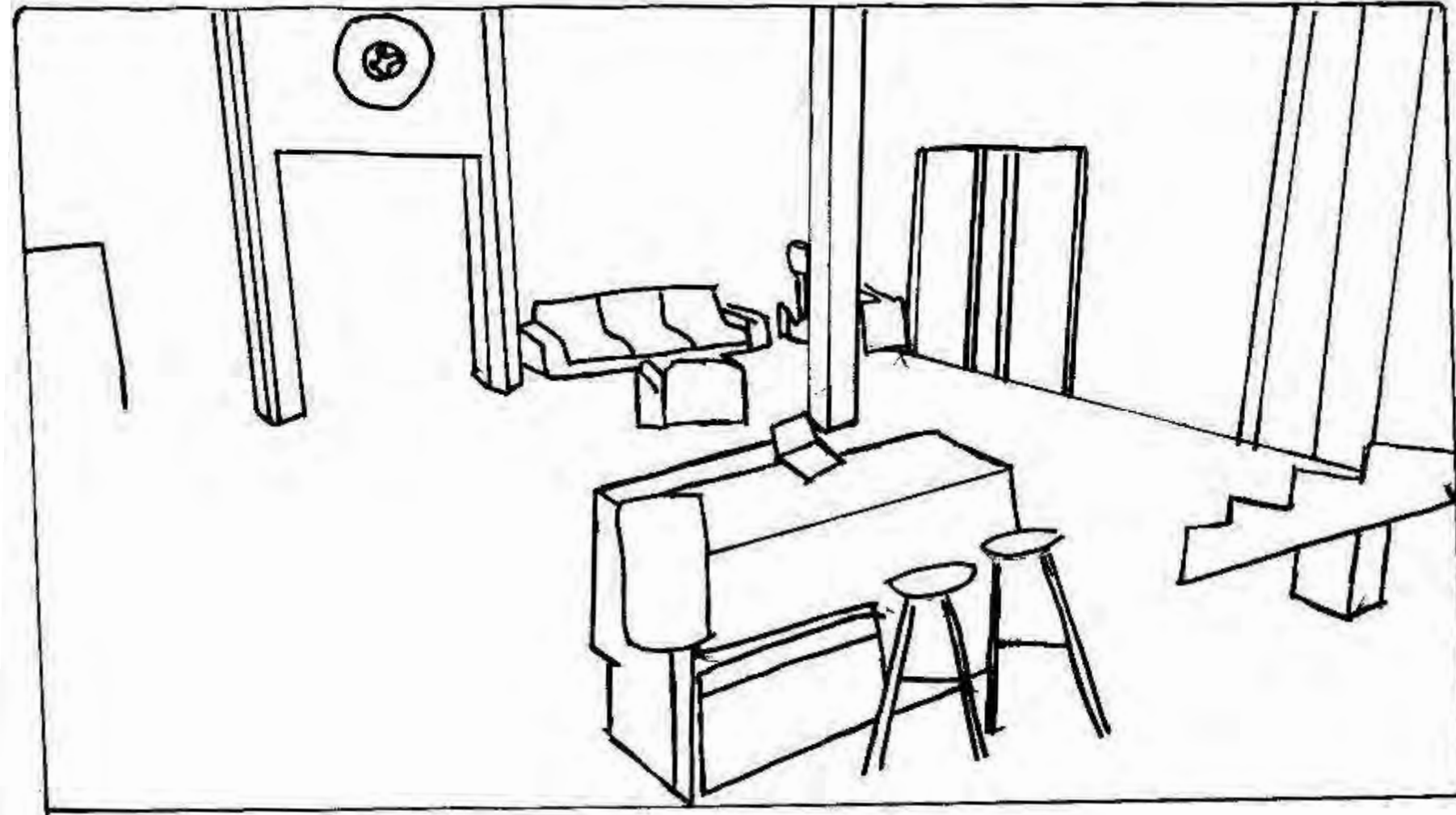


Perspectives

Exhibition Space

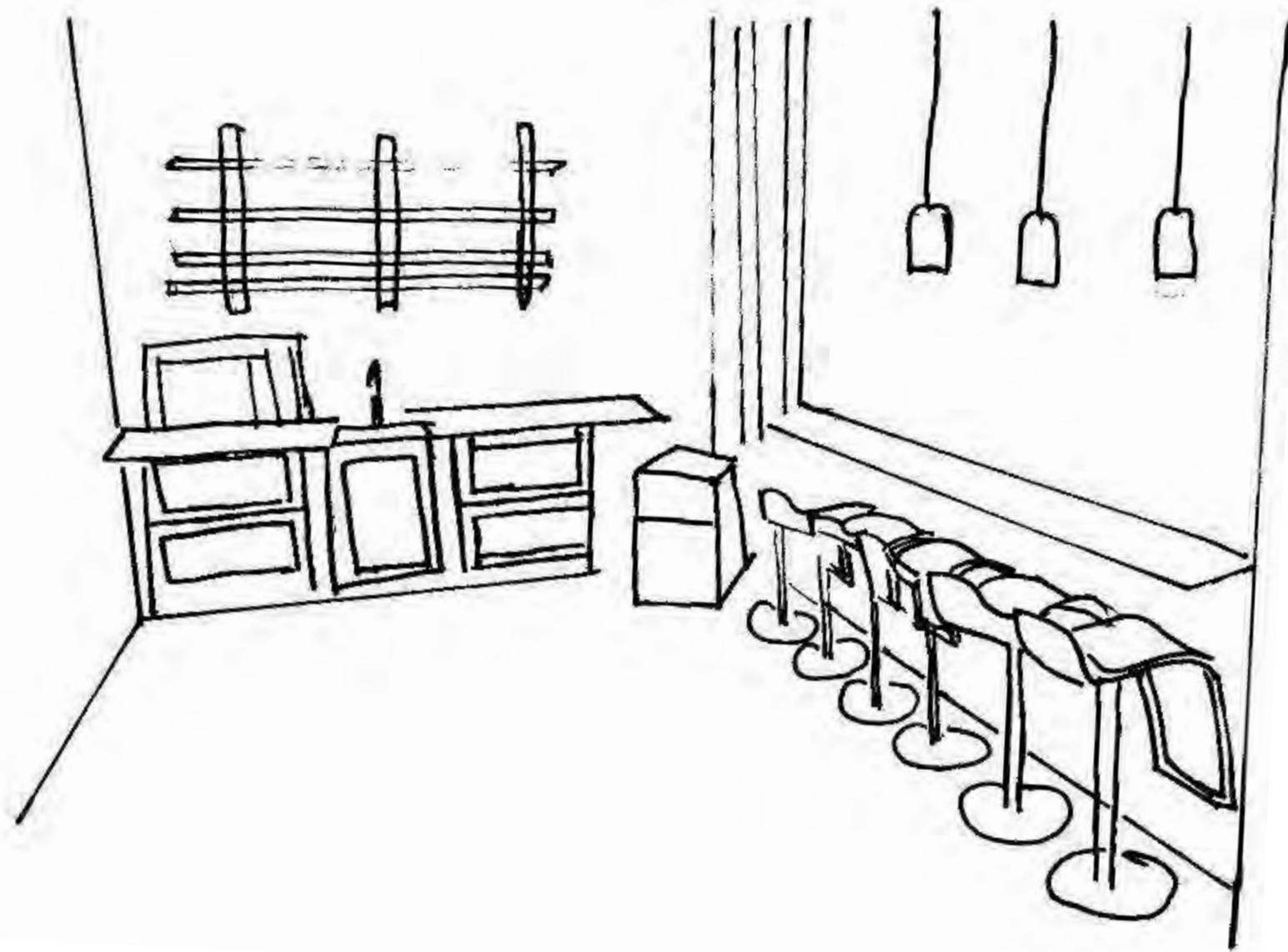


Reception Area

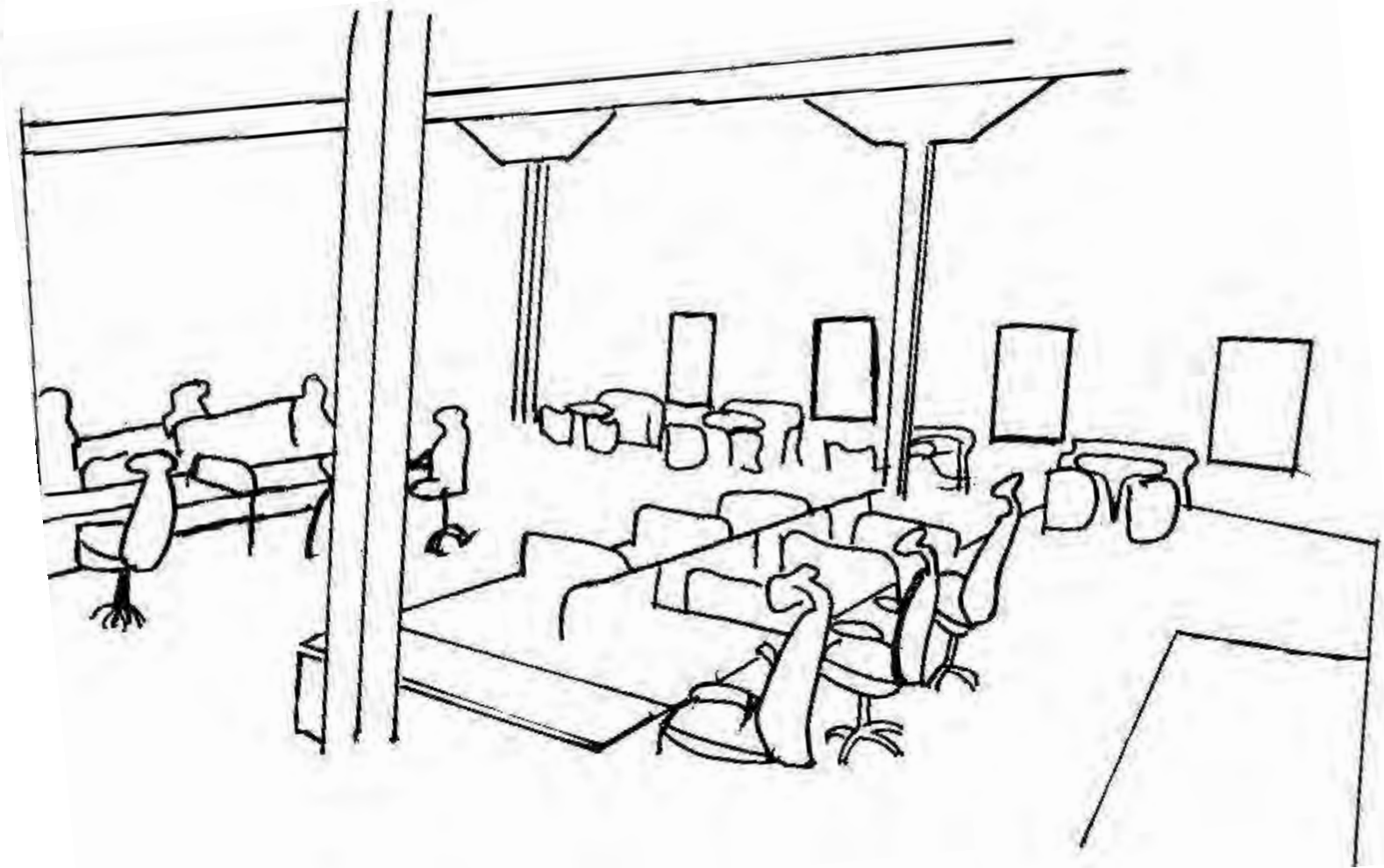


Perspectives

Pantry



Workstations



Sketchup Scenes

- Reception Area



Sketchup Scenes

- Pantry



Sketchup Scenes

- Exhibition Space



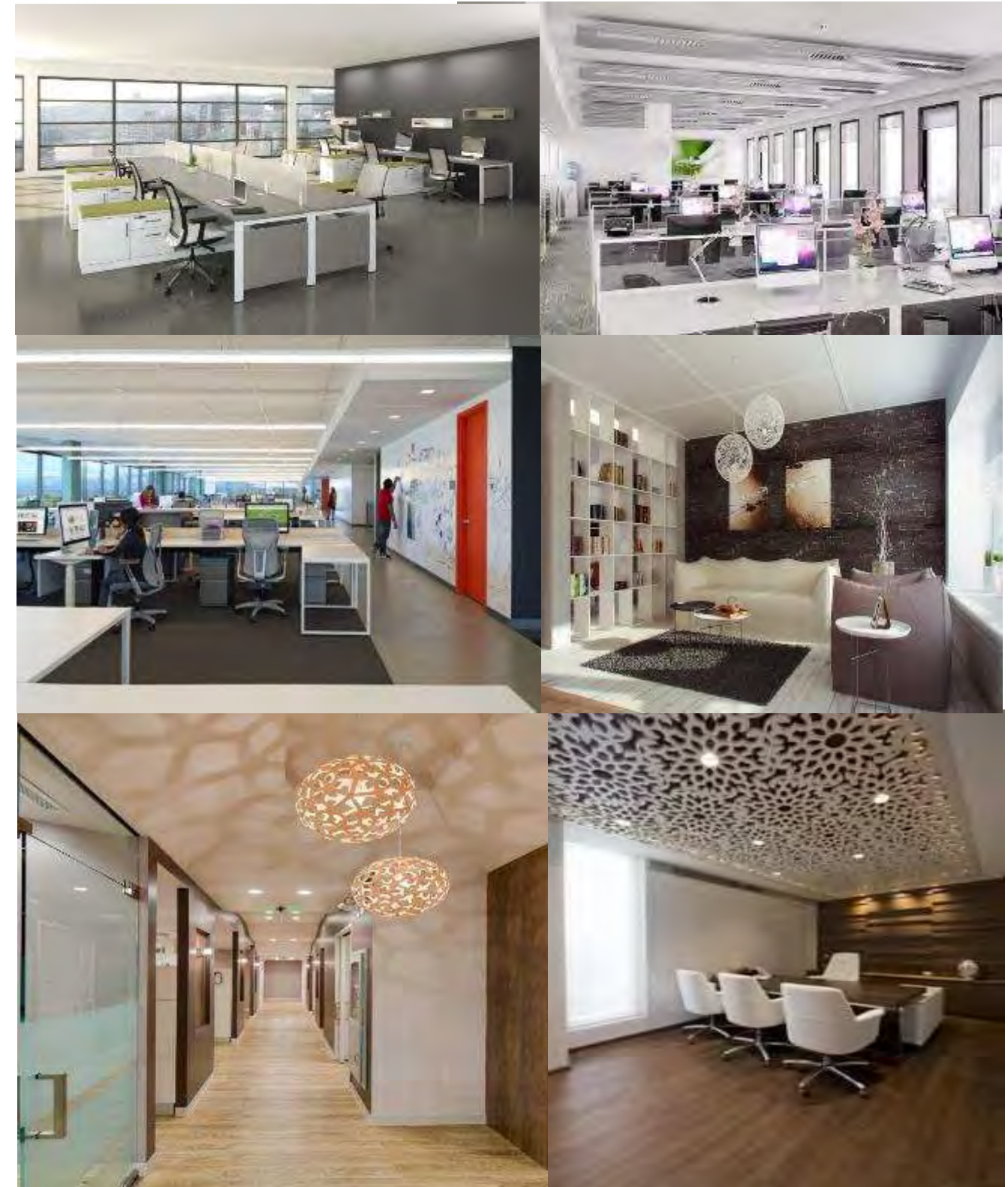
Sketchup Scenes

- Workstations



Concept Statement/Inspiration Images

- The Gateway Center's design is a reflection of the Tobacco Warehouse that stood before it, in the 1900's-1950's.
- The historic district it sits upon includes notable examples of Art Deco and Italianate style industrial architecture.
- The design concept for The Gateway Center is to incorporate historical influences of the coastal south as well as a fresh new feel.
- As this building was once a warehouse full of hard labor, it is fitting to transform it into a modern office work space.
- This space will cater to the success of the company and its staff members.
- The design plan for this space was to have a functional, comfortable work environment for many.
- The space incorporates rustic wood, metals and stones to reflect the rugged space it once was.



Architectural Finishes, Furniture, and Finishes

- Modern steel railings and piped open shelving are used to connect with the materials that were originally used in this space
- Open desks and glass walls are used to create mass communication
- Rustic Wood accents for an antiqued look.
- Furniture colors are neutral colors for a simple and sophisticated feel.
- Bright blue accents in the chairs and rugs represent the coastal south.
- Woods were used to connect the space to Coastal Southern homes
- Art Deco lamps and tables represent the style of its original time.
- Industrial rustic lighting ties in with Industrial architecture that the Tobacco Warehouse once included.



Architectural Finishes, Furniture, and Finishes

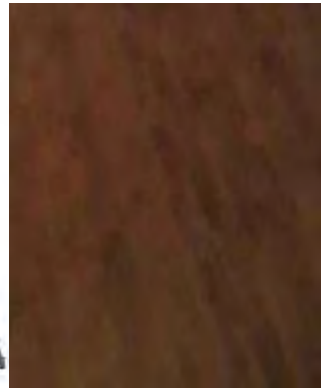
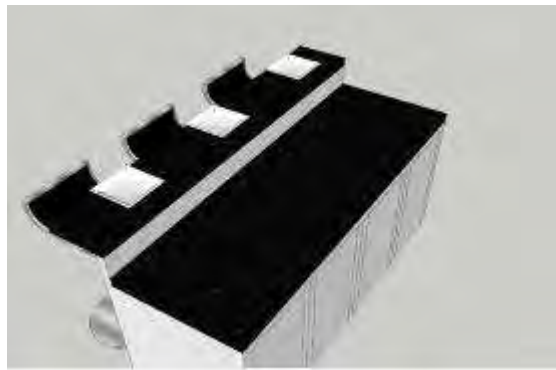
- Second Floor



Architectural Finishes, Furniture, and Finishes

- First Floor

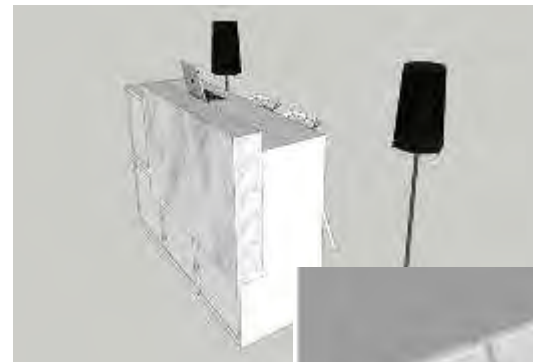
Pantry



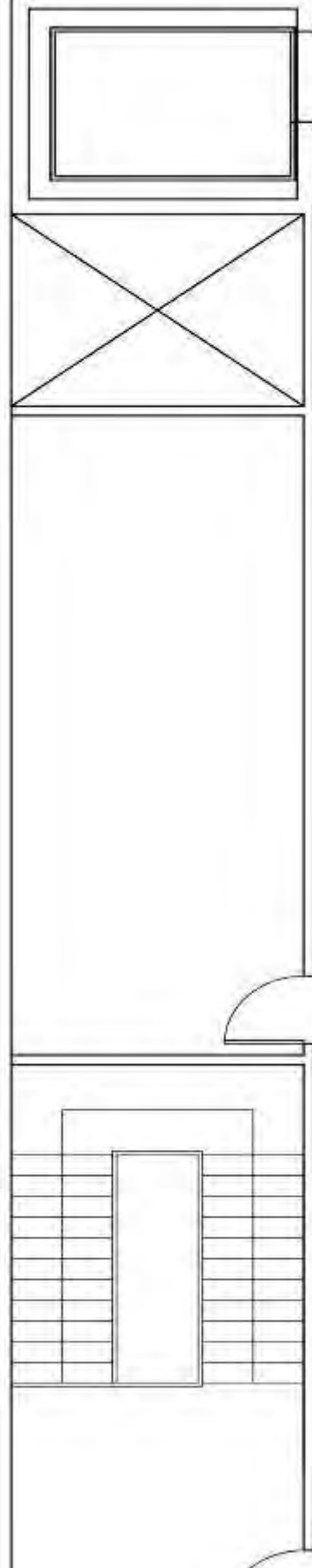
Exhibition Space



Reception Area



Final Plan

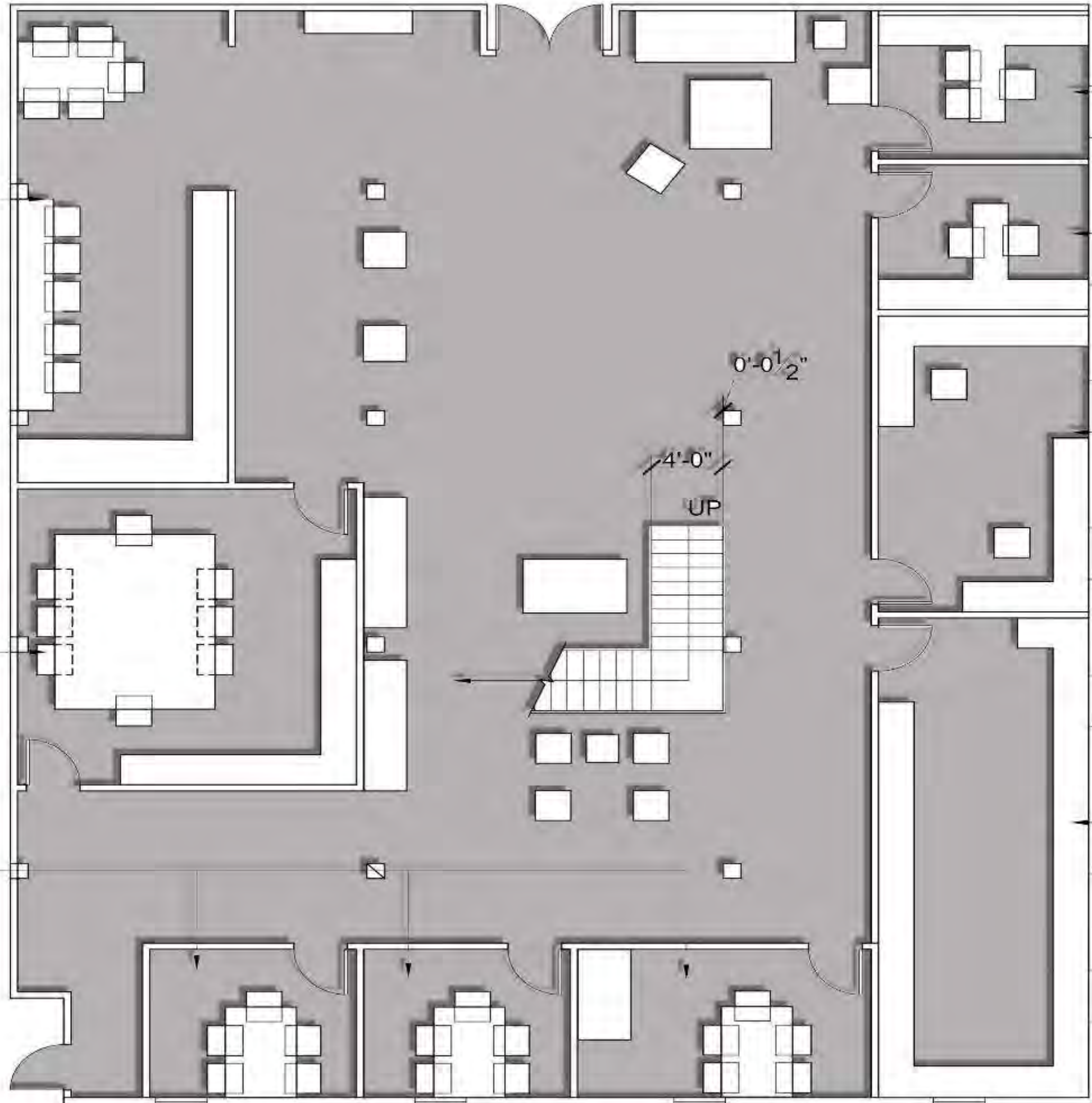


Center Front Desk Space



Back Center Space

Final Plan



Pantry/Storage

Director

Administrative

Technicians

Large Conference Room

Work Room

Small Conference Rooms

0'-0 1/2"

4'-0"

UP