

Concept Statement

This building is a mixture of natural and man-made elements. It is comfortable, yet modern. The use of rustic wood such as the stairs against glass pieces like the railings is an example of this. The furniture is neutral and modern in style. The wide sitting benches are modern in their shape and color, which is black. I was inspired by the original barn doors inside the building before renovation. Similar metal from these original doors is used as the sliding doors of the office spaces. This gave me the idea to focus on the history of farming and agriculture in the Eastern Carolinas. In the exhibition area are displays of vintage farming tools and barrels of North Carolina's most famous crops, tobacco, cotton, and grain. I want to incorporate pieces of the buildings past while making it modern for today's use.

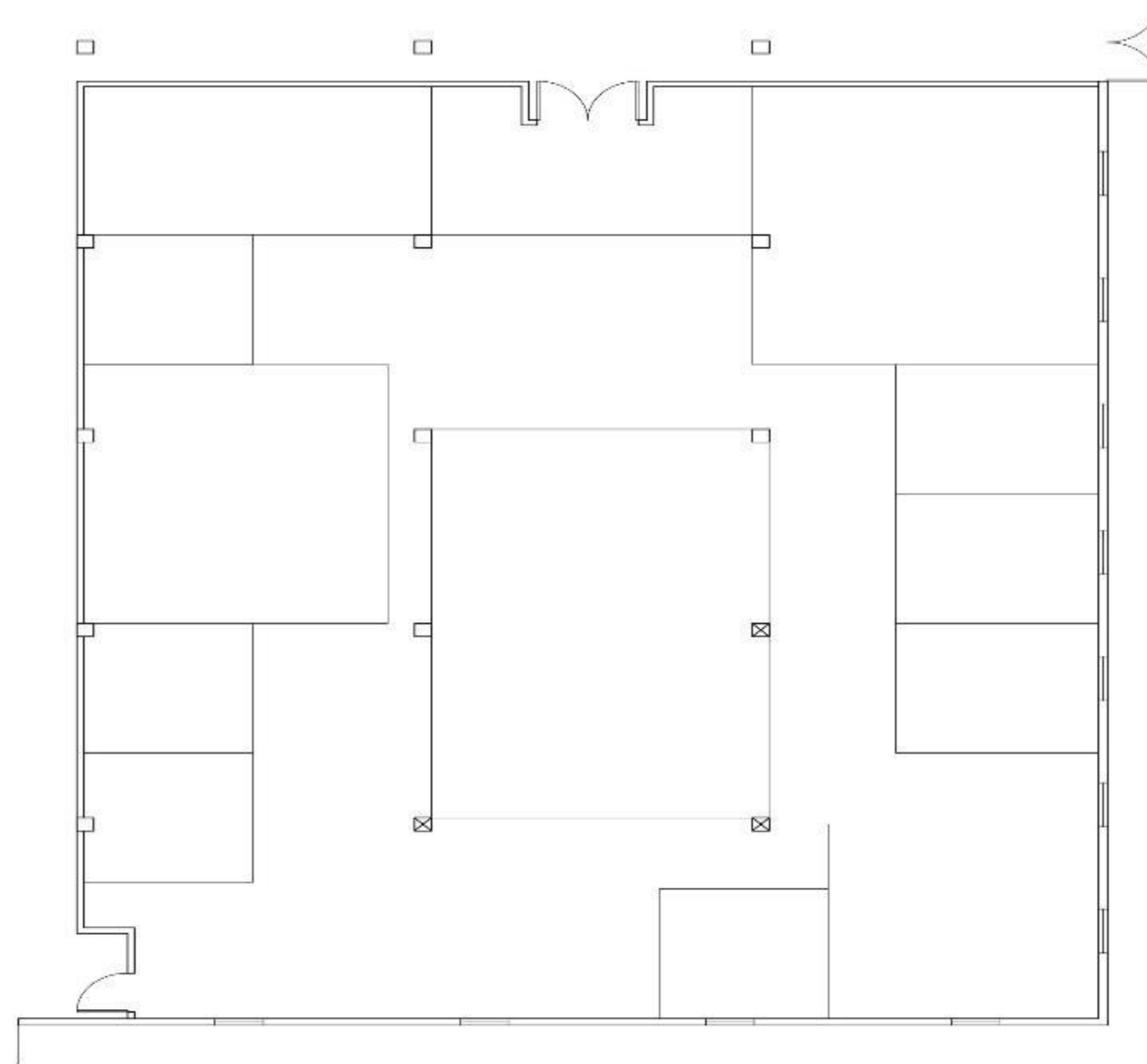


Noel Palma

**IDSN 2102
Interior Design Fundamentals
Professor Charles Gustina**

**Department of
Interior Design & Merchandising
College of Human Ecology
East Carolina University**

Space Plan Sketches

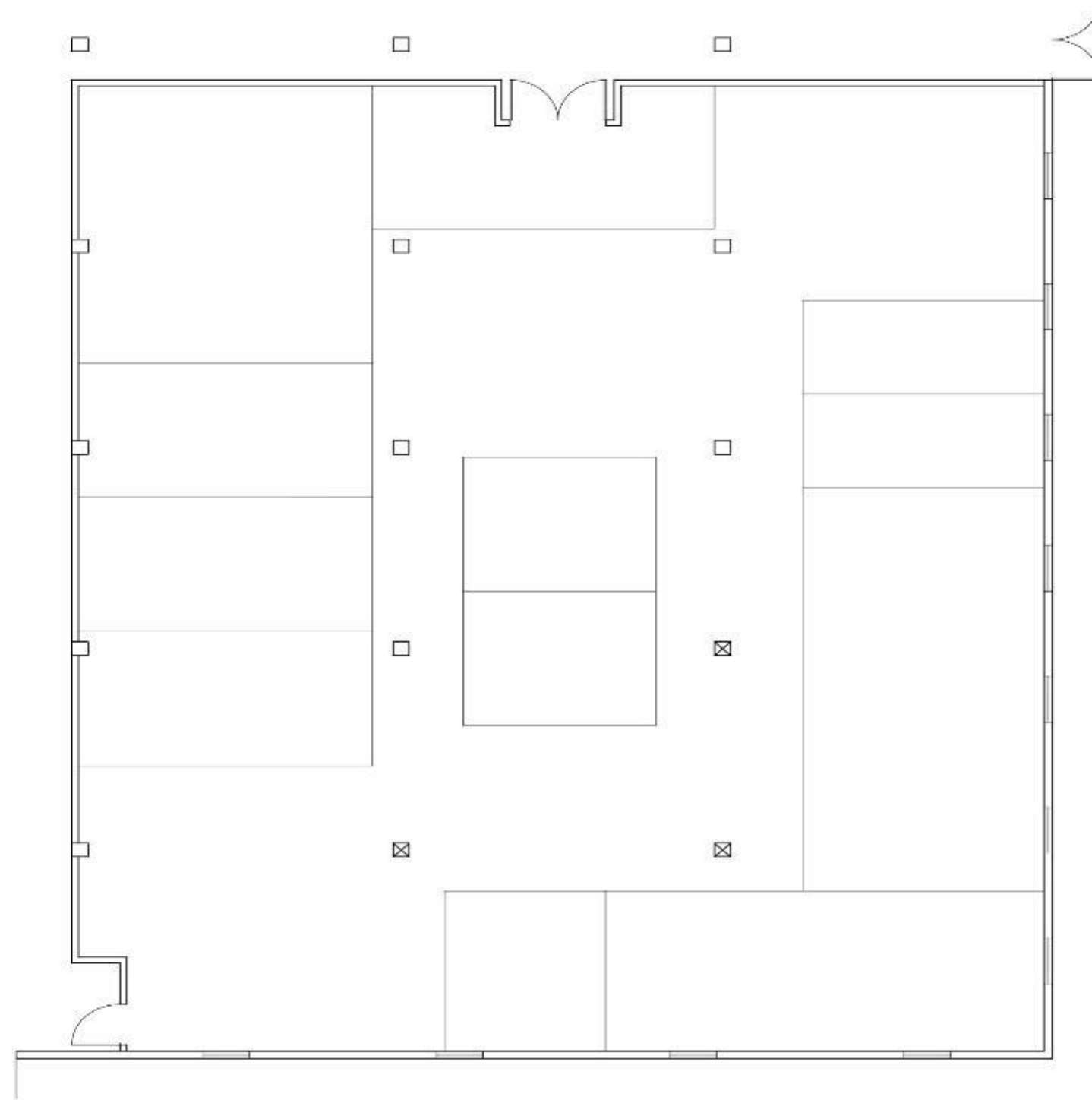


Noel Palma

**IDSN 2102
Interior Design Fundamentals
Professor Charles Gustina**

**Department of
Interior Design & Merchandising
College of Human Ecology
East Carolina University**

Space Plan Sketches



Noel Palma

**IDSN 2102
Interior Design Fundamentals
Professor Charles Gustina**

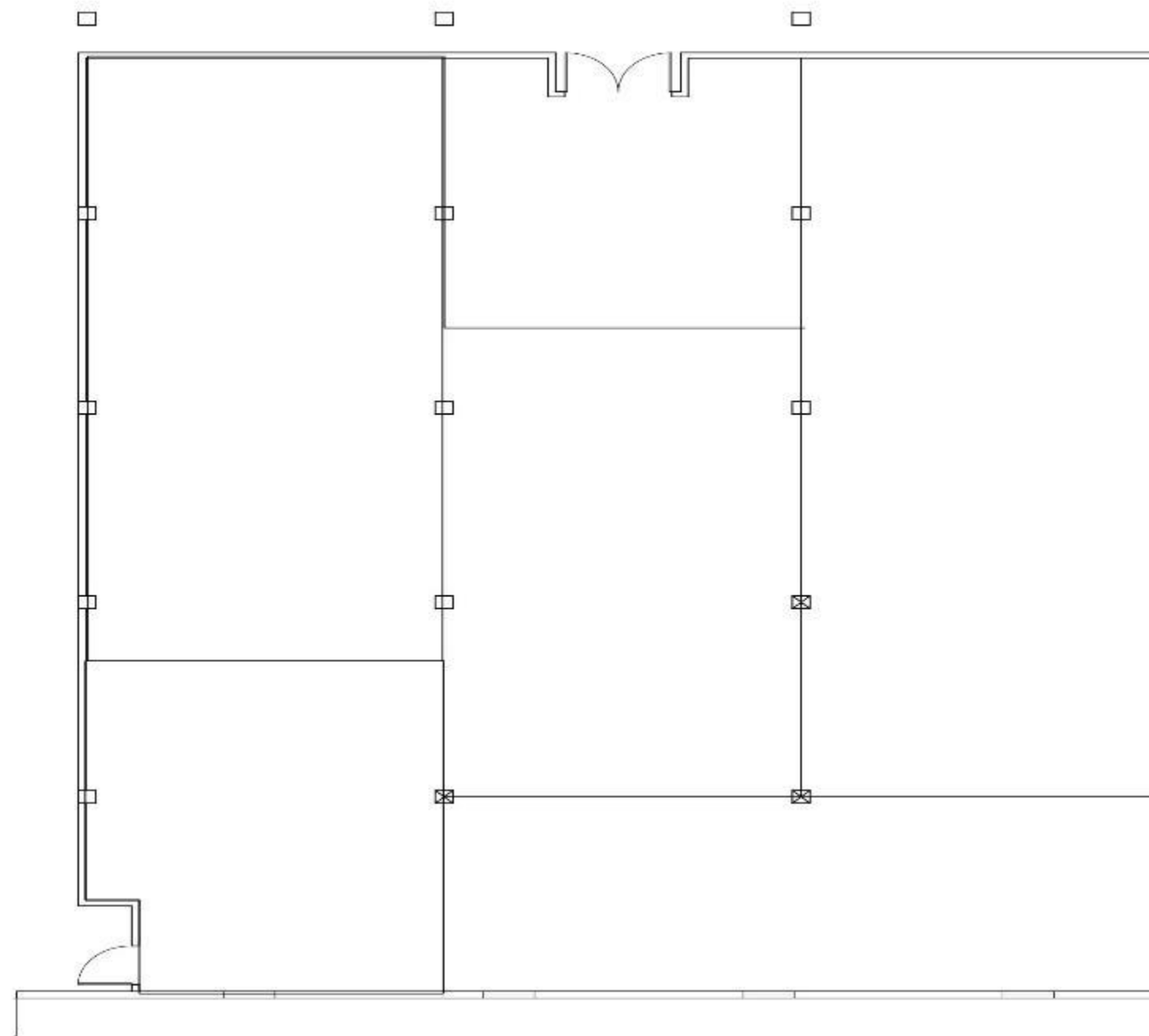
**Department of
Interior Design & Merchandising
College of Human Ecology
East Carolina University**

Space Plan Sketches



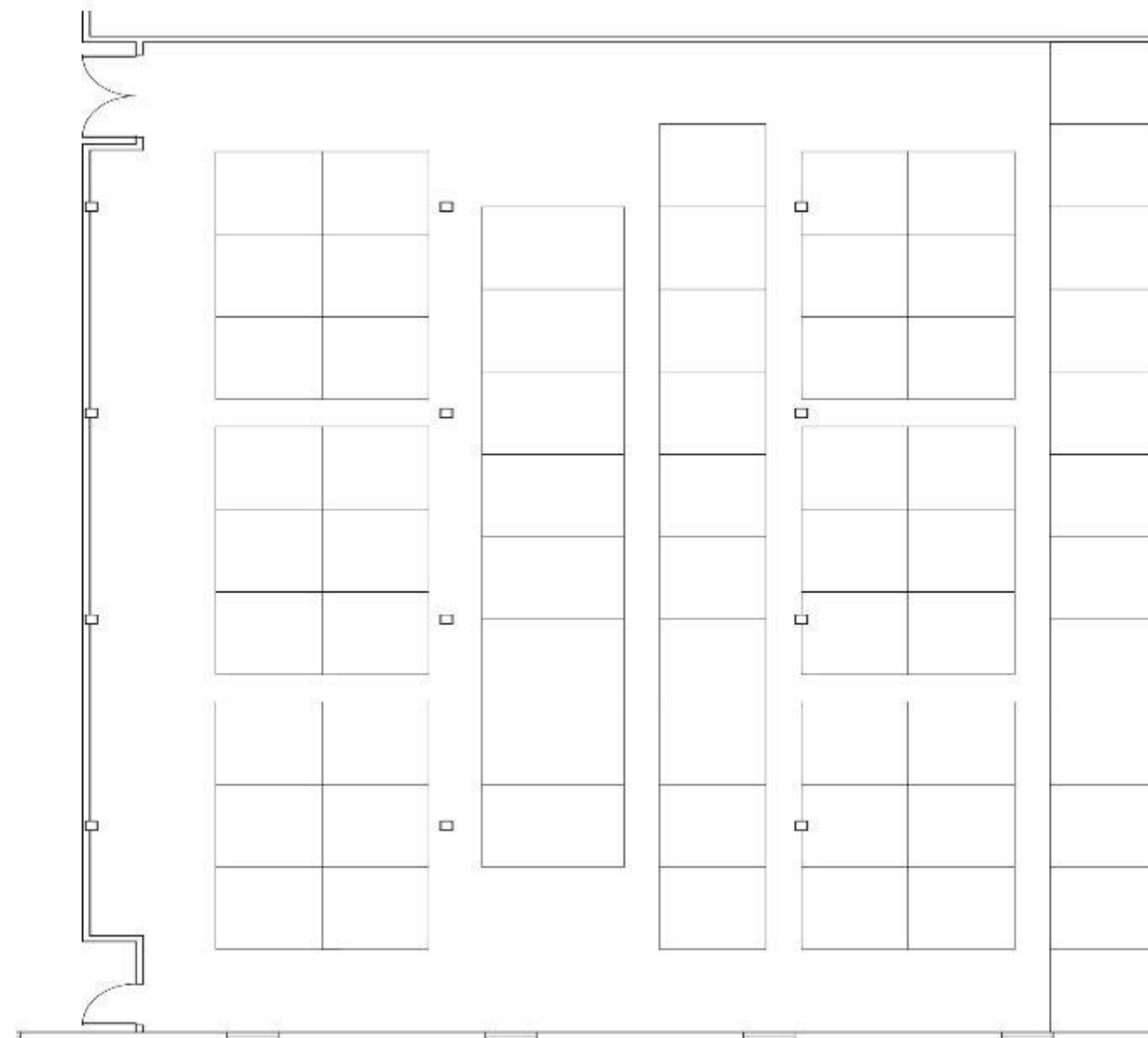
Noel Palma

**IDSN 2102
Interior Design Fundamentals
Professor Charles Gustina**



**Department of
Interior Design & Merchandising
College of Human Ecology
East Carolina University**

Space Plan Sketches



Noel Palma

**IDSN 2102
Interior Design Fundamentals
Professor Charles Gustina**

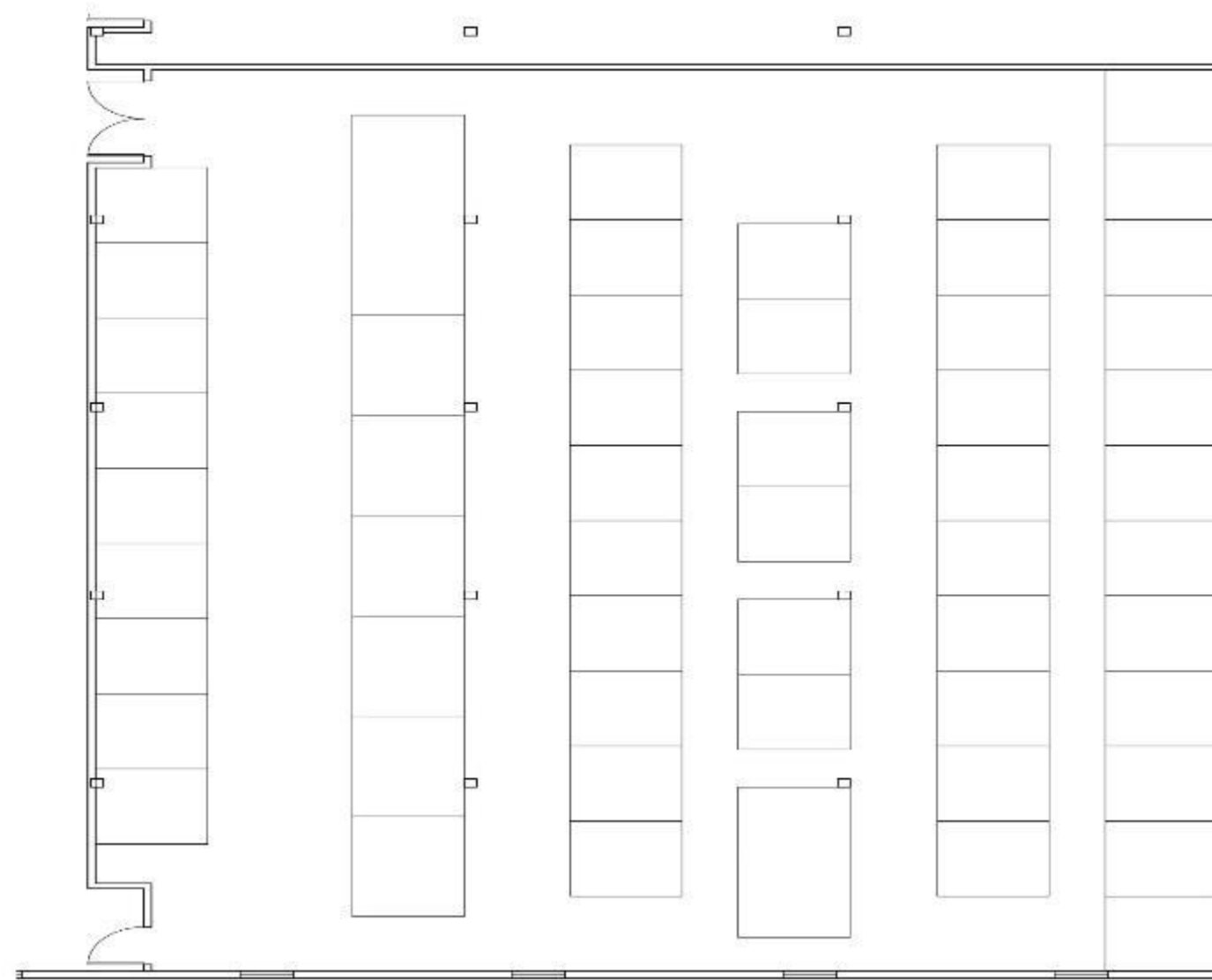
**Department of
Interior Design & Merchandising
College of Human Ecology
East Carolina University**

Space Plan Sketches



Noel Palma

**IDSN 2102
Interior Design Fundamentals
Professor Charles Gustina**



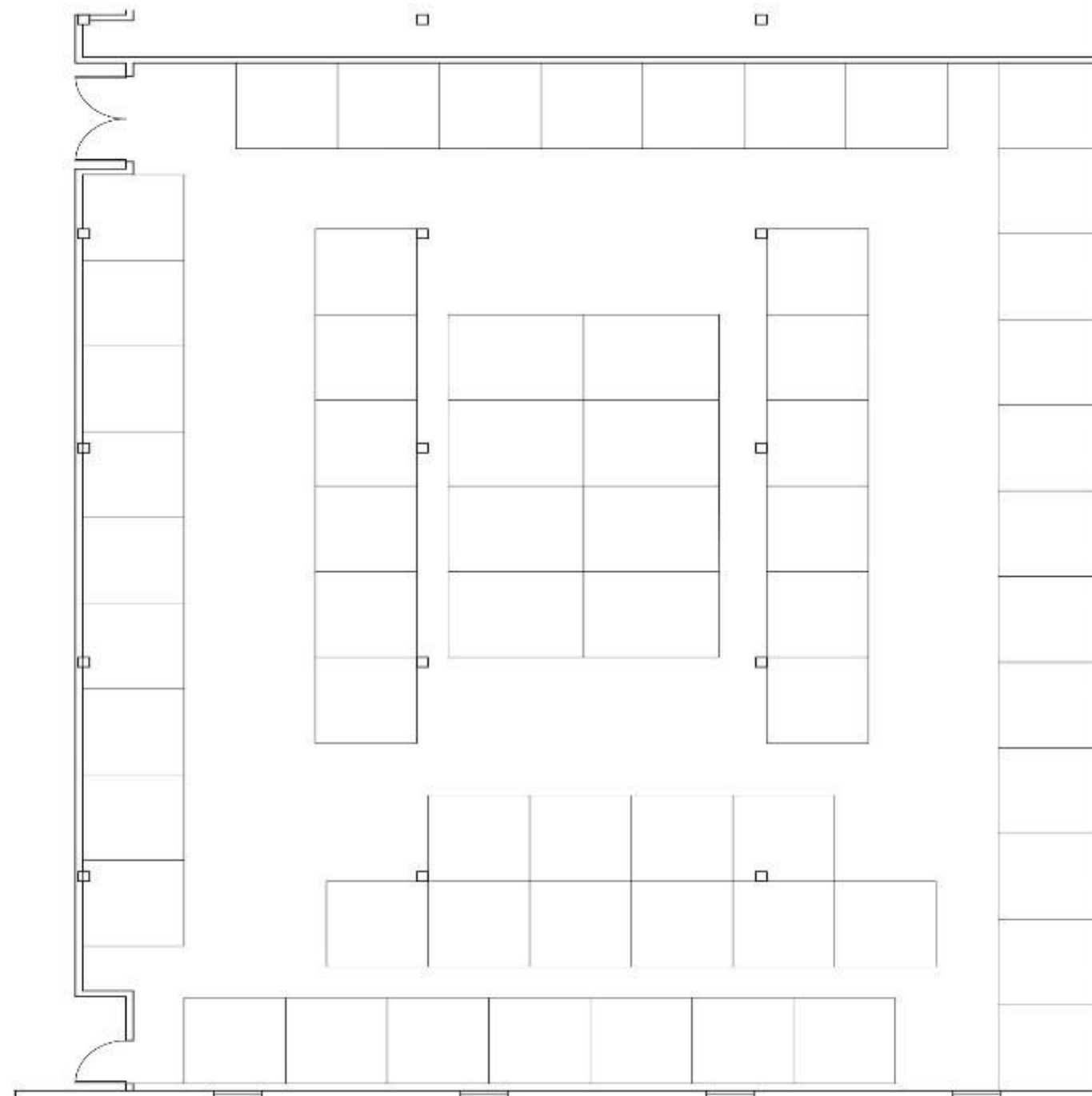
**Department of
Interior Design & Merchandising
College of Human Ecology
East Carolina University**

Space Plan Sketches



Noel Palma

**IDSN 2102
Interior Design Fundamentals
Professor Charles Gustina**



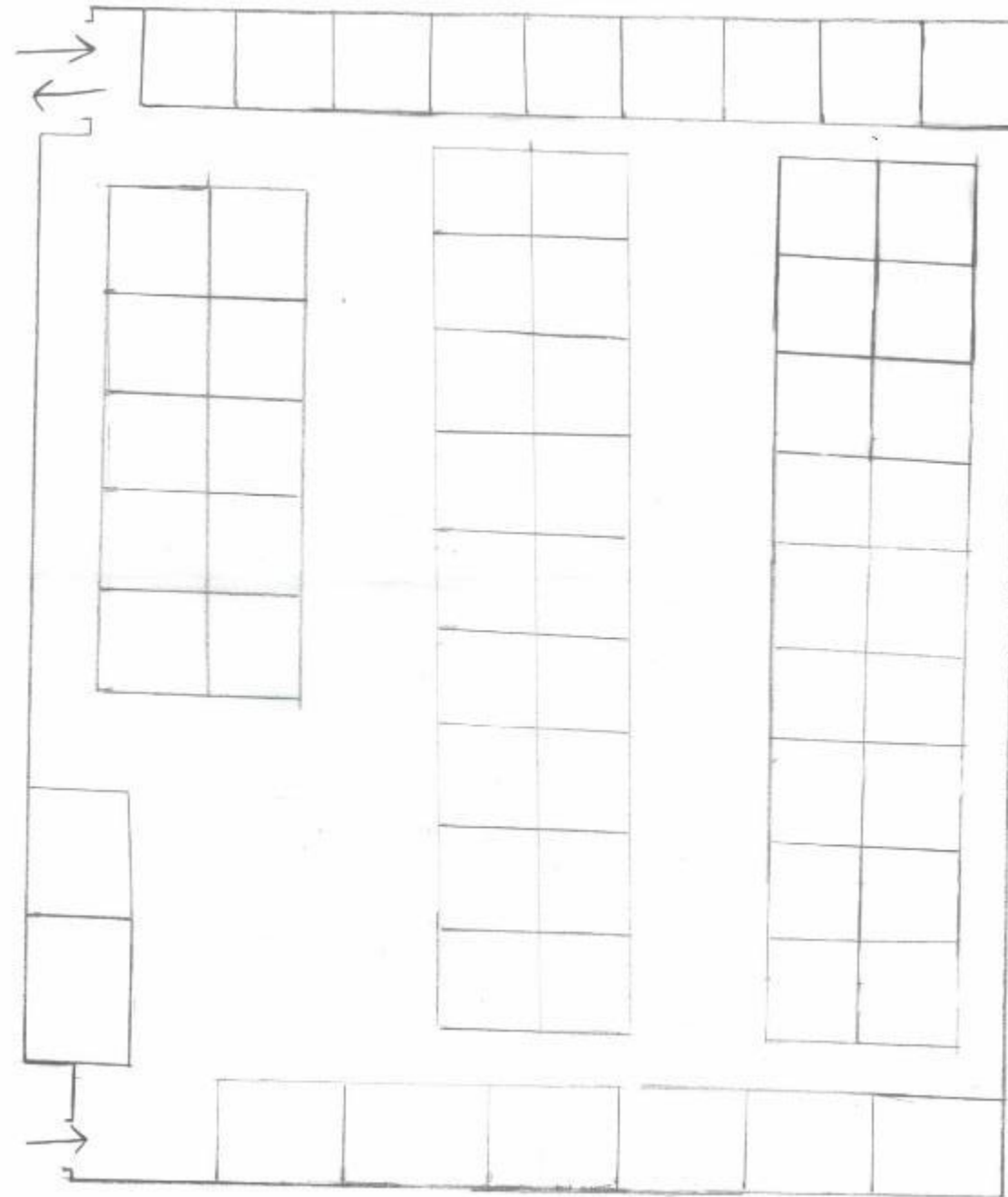
**Department of
Interior Design & Merchandising
College of Human Ecology
East Carolina University**

Space Plan Sketches



Noel Palma

**IDSN 2102
Interior Design Fundamentals
Professor Charles Gustina**



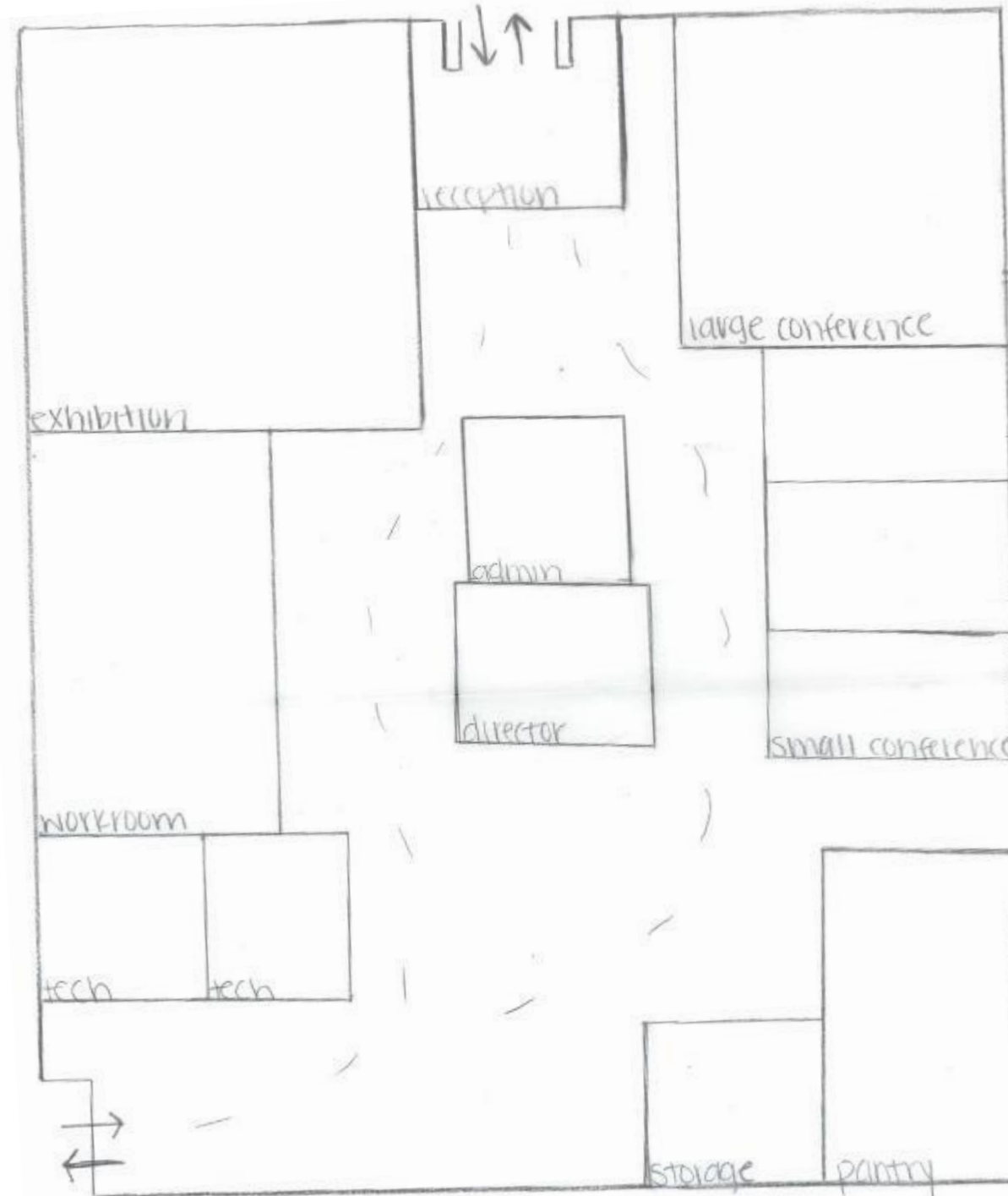
**Department of
Interior Design & Merchandising
College of Human Ecology
East Carolina University**

Space Plan Sketches



Noel Palma

IDSN 2102
Interior Design Fundamentals
Professor Charles Gustina

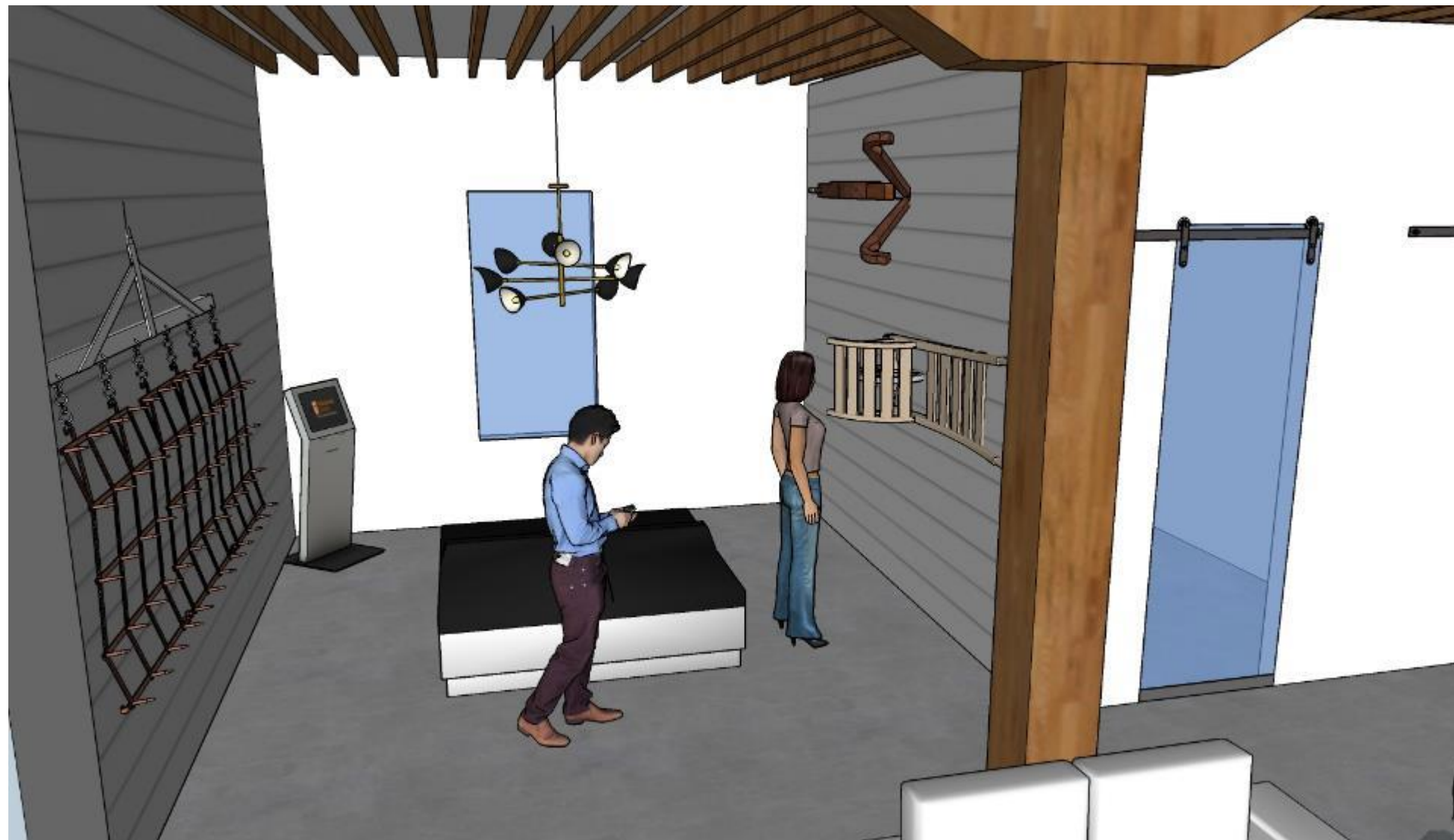


Department of
Interior Design & Merchandising
College of Human Ecology
East Carolina University

Exhibition Space- View One

Noel Palma

IDSN 2102
Interior Design Fundamentals
Professor Charles Gustina



Department of
Interior Design & Merchandising
College of Human Ecology
East Carolina University

Exhibition Space- View One



Noel Palma

**IDSN 2102
Interior Design Fundamentals
Professor Charles Gustina**

**Department of
Interior Design & Merchandising
College of Human Ecology
East Carolina University**

Pantry Space

Noel Palma

IDSN 2102
Interior Design Fundamentals
Professor Charles Gustina



Department of
Interior Design & Merchandising
College of Human Ecology
East Carolina University

Reception View

Noel Palma

**IDSN 2102
Interior Design Fundamentals
Professor Charles Gustina**



**Department of
Interior Design & Merchandising
College of Human Ecology
East Carolina University**

Work Area View

Noel Palma

**IDSN 2102
Interior Design Fundamentals
Professor Charles Gustina**



**Department of
Interior Design & Merchandising
College of Human Ecology
East Carolina University**

Inspirational Images



Noel Palma

**IDSN 2102
Interior Design Fundamentals
Professor Charles Gustina**

**Department of
Interior Design & Merchandising
College of Human Ecology
East Carolina University**

Finishes

- Wood finishes for the stairs and floor
- Polished concrete as the floor
- Stainless steel in kitchen
- Glass used for railings and doorways
- Tile used for accents



Noel Palma

IDSN 2102

Interior Design Fundamentals

Professor Charles Gustina

**Department of
Interior Design & Merchandising
College of Human Ecology
East Carolina University**

Furniture

Noel Palma

IDSN 2102
Interior Design Fundamentals
Professor Charles Gustina



Department of
Interior Design & Merchandising
College of Human Ecology
East Carolina University

Furniture- Work Area

Noel Palma

IDSN 2102
Interior Design Fundamentals
Professor Charles Gustina



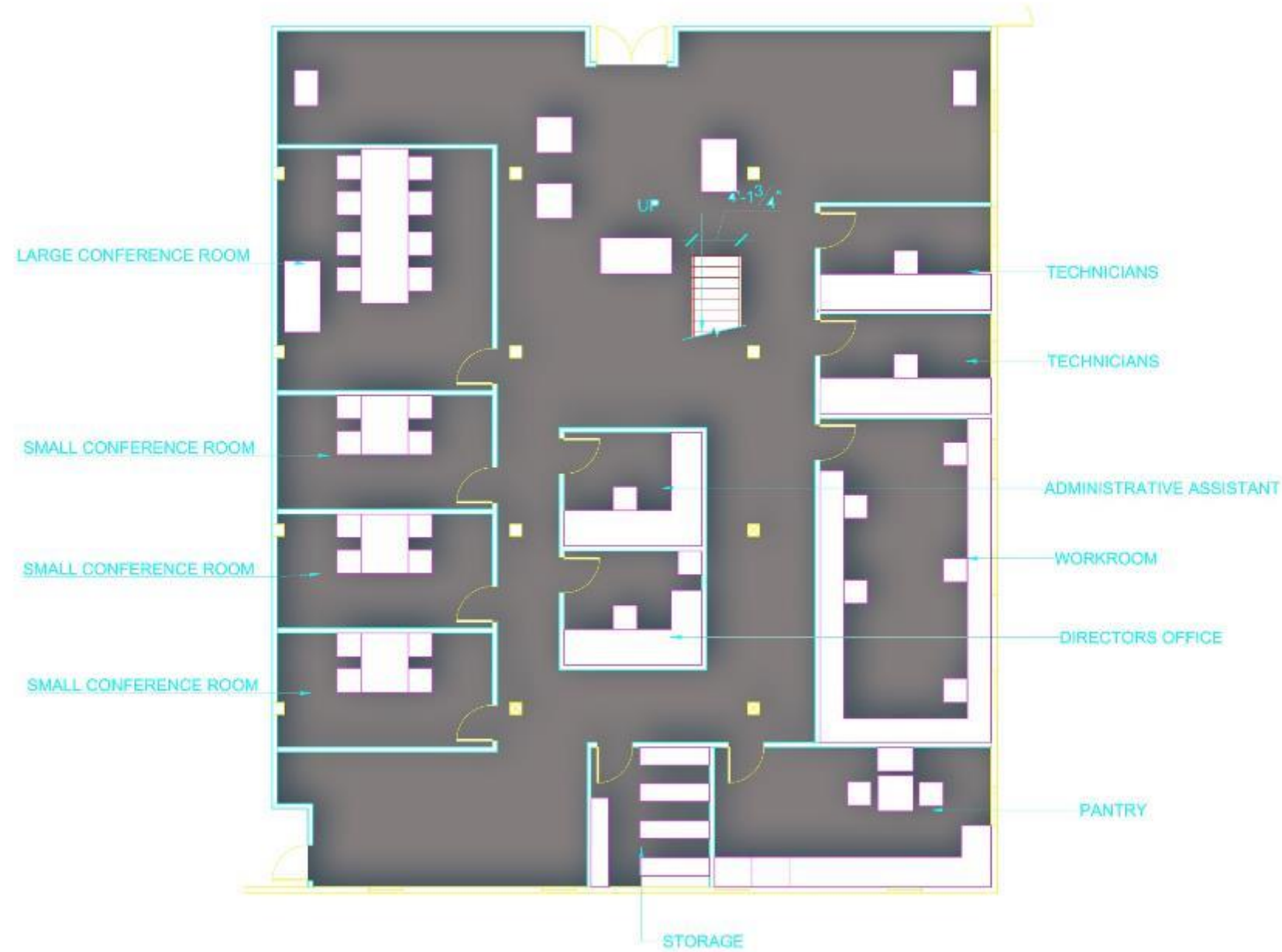
Department of
Interior Design & Merchandising
College of Human Ecology
East Carolina University

AutoCad Furniture Plan- Downstairs

Noel Palma



IDSN 2102
Interior Design Fundamentals
Professor Charles Gustina



Department of
Interior Design & Merchandising
College of Human Ecology
East Carolina University

AutoCad Furniture Plan- Upstairs

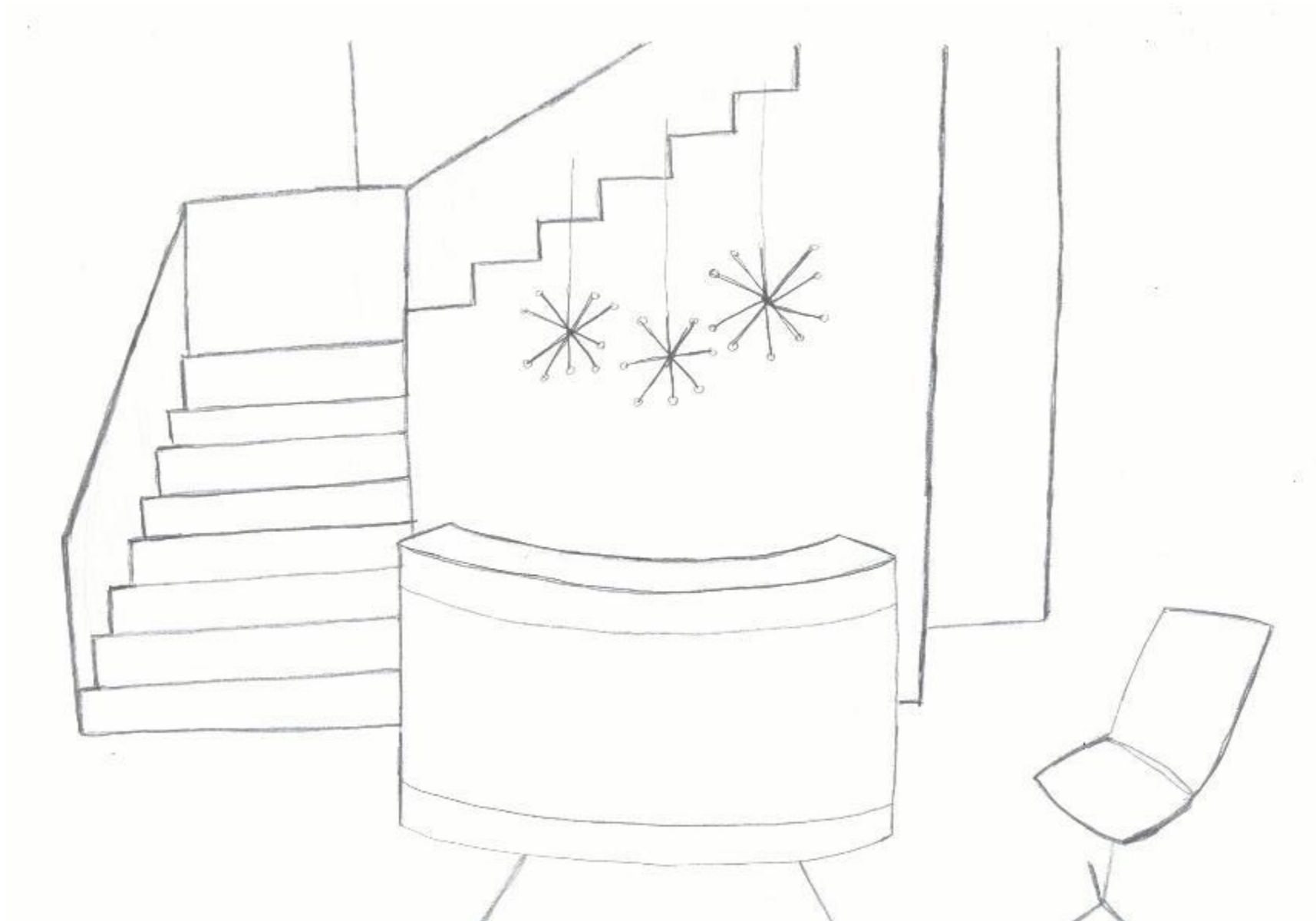
Noel Palma



IDSN 2102
Interior Design Fundamentals
Professor Charles Gustina

Department of
Interior Design & Merchandising
College of Human Ecology
East Carolina University

Perspective Sketch- Reception



Noel Palma

**IDSN 2102
Interior Design Fundamentals
Professor Charles Gustina**

**Department of
Interior Design & Merchandising
College of Human Ecology
East Carolina University**

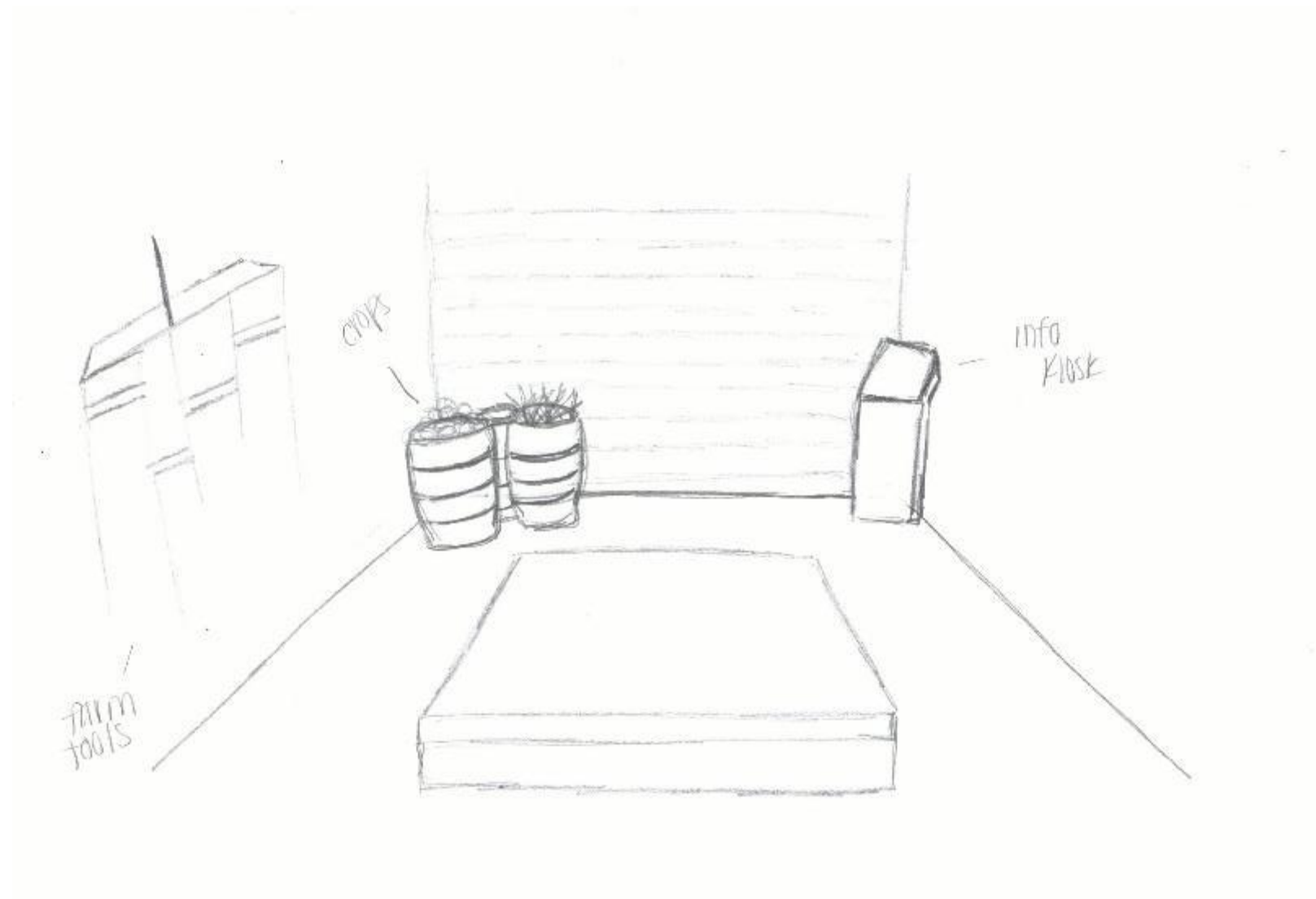
Perspective Sketch- Exhibition

Noel Palma

IDSN 2102

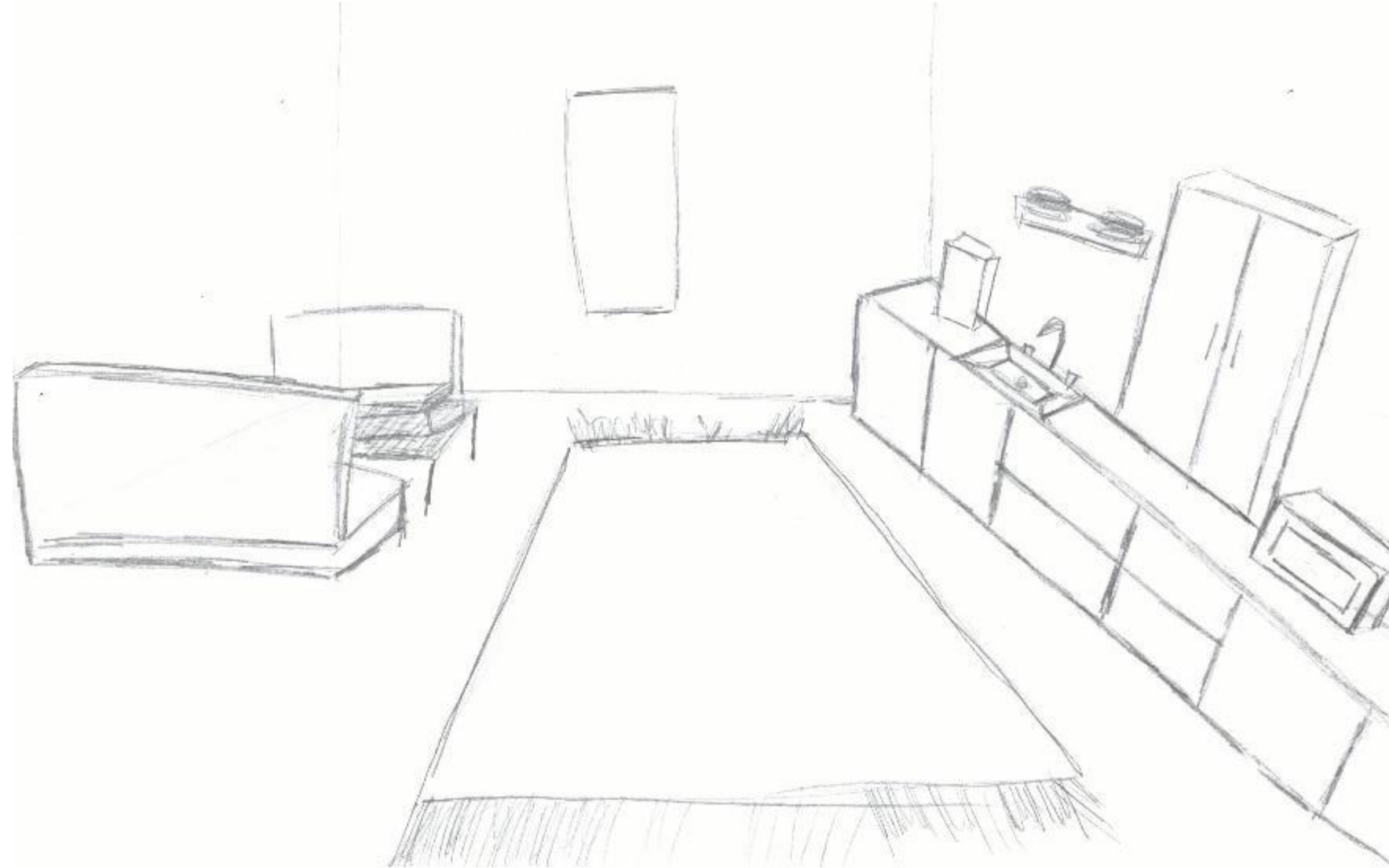
Interior Design Fundamentals

Professor Charles Gustina



Department of
Interior Design & Merchandising
College of Human Ecology
East Carolina University

Perspective Sketch- Pantry



Noel Palma

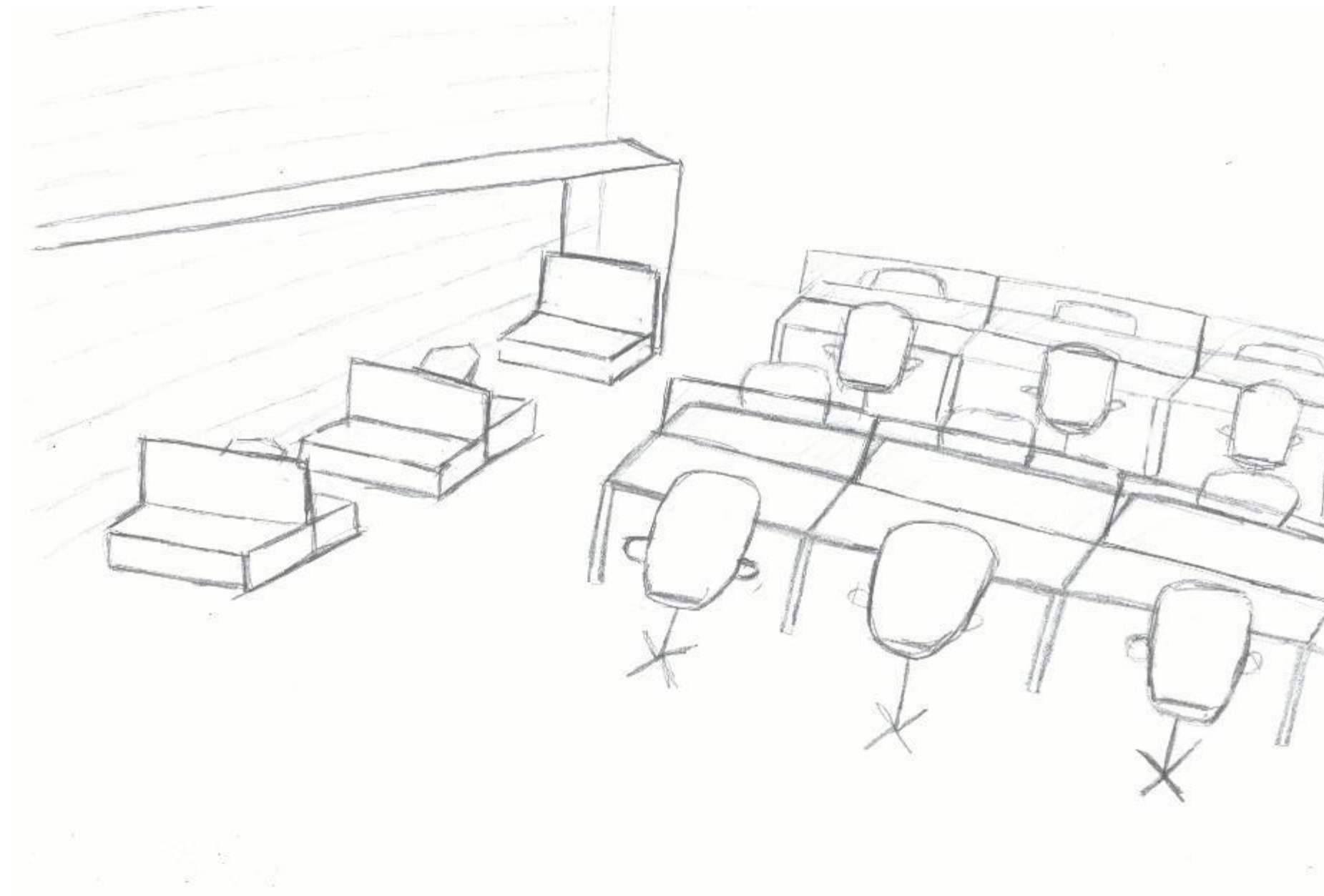
IDSN 2102

Interior Design Fundamentals

Professor Charles Gustina

**Department of
Interior Design & Merchandising
College of Human Ecology
East Carolina University**

Perspective Sketch- Work Area



Noel Palma

**IDSN 2102
Interior Design Fundamentals
Professor Charles Gustina**

**Department of
Interior Design & Merchandising
College of Human Ecology
East Carolina University**

