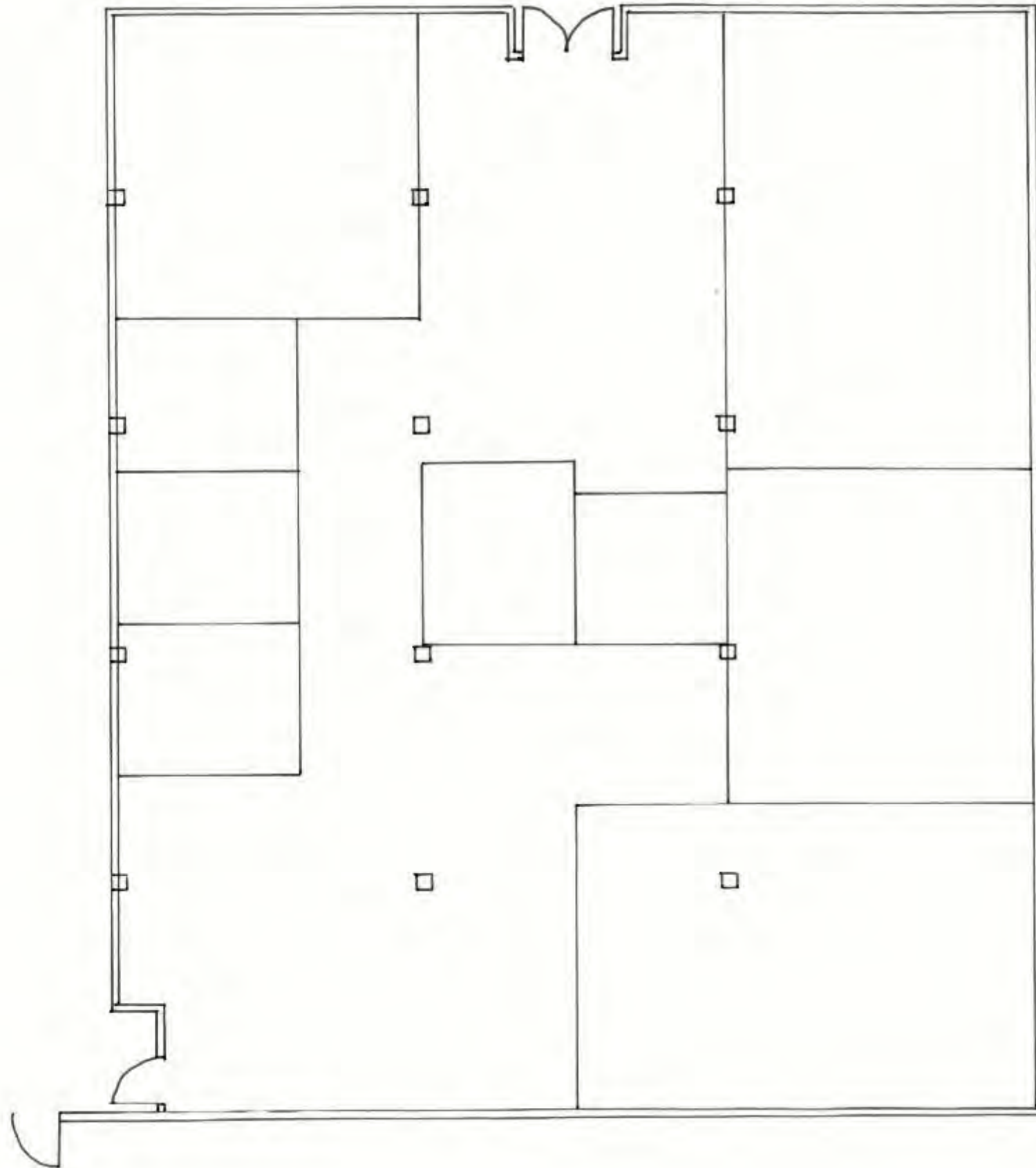


Christy Reynolds
IDSN 2102
Portfolio 2
Professor Gustina
Fall 2017

SPACE PLANNING

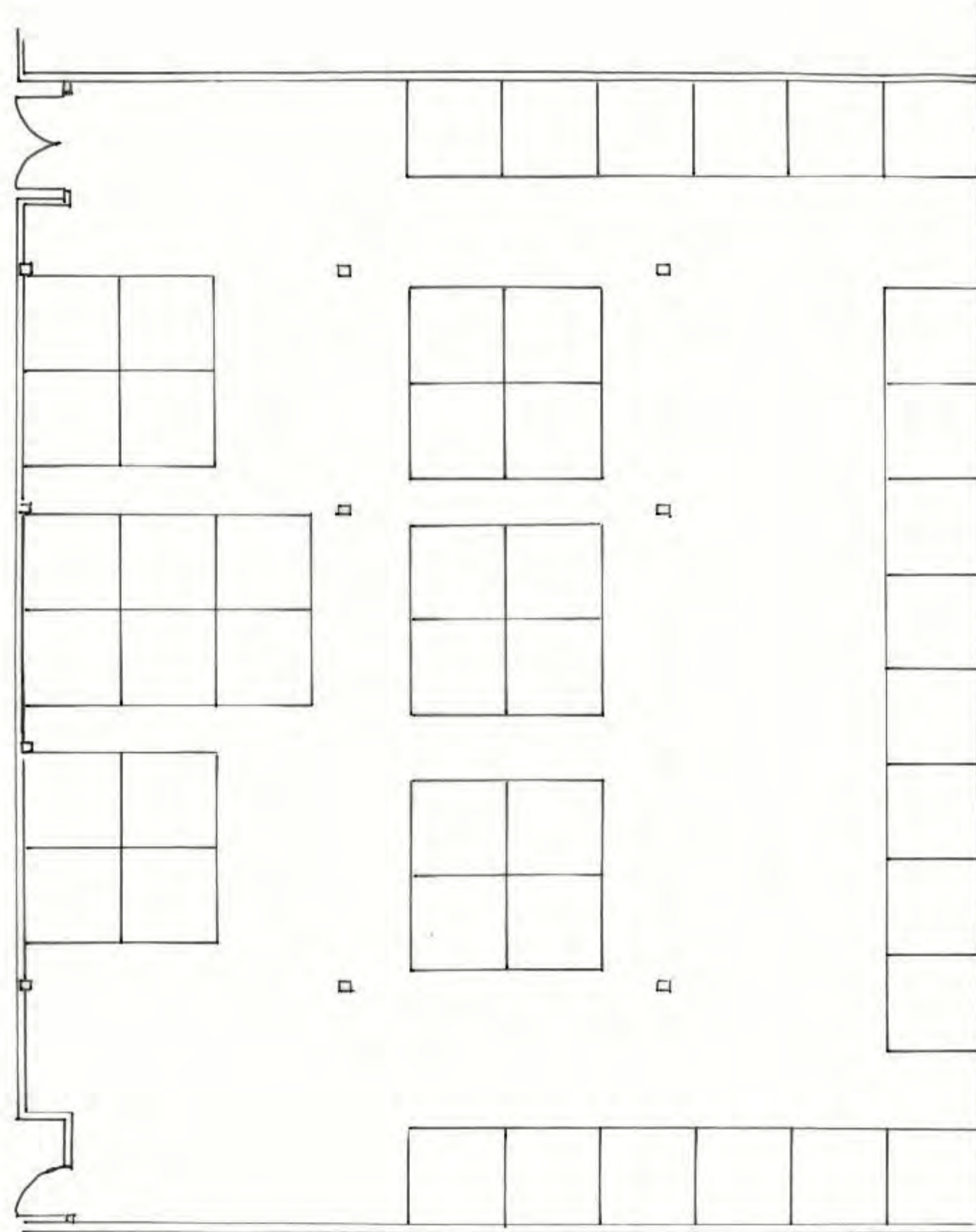
HAND DRAWN SKETCHES

BOTTOM FLOOR SKETCH



DRAWN TO 1/8" = 1' SCALE

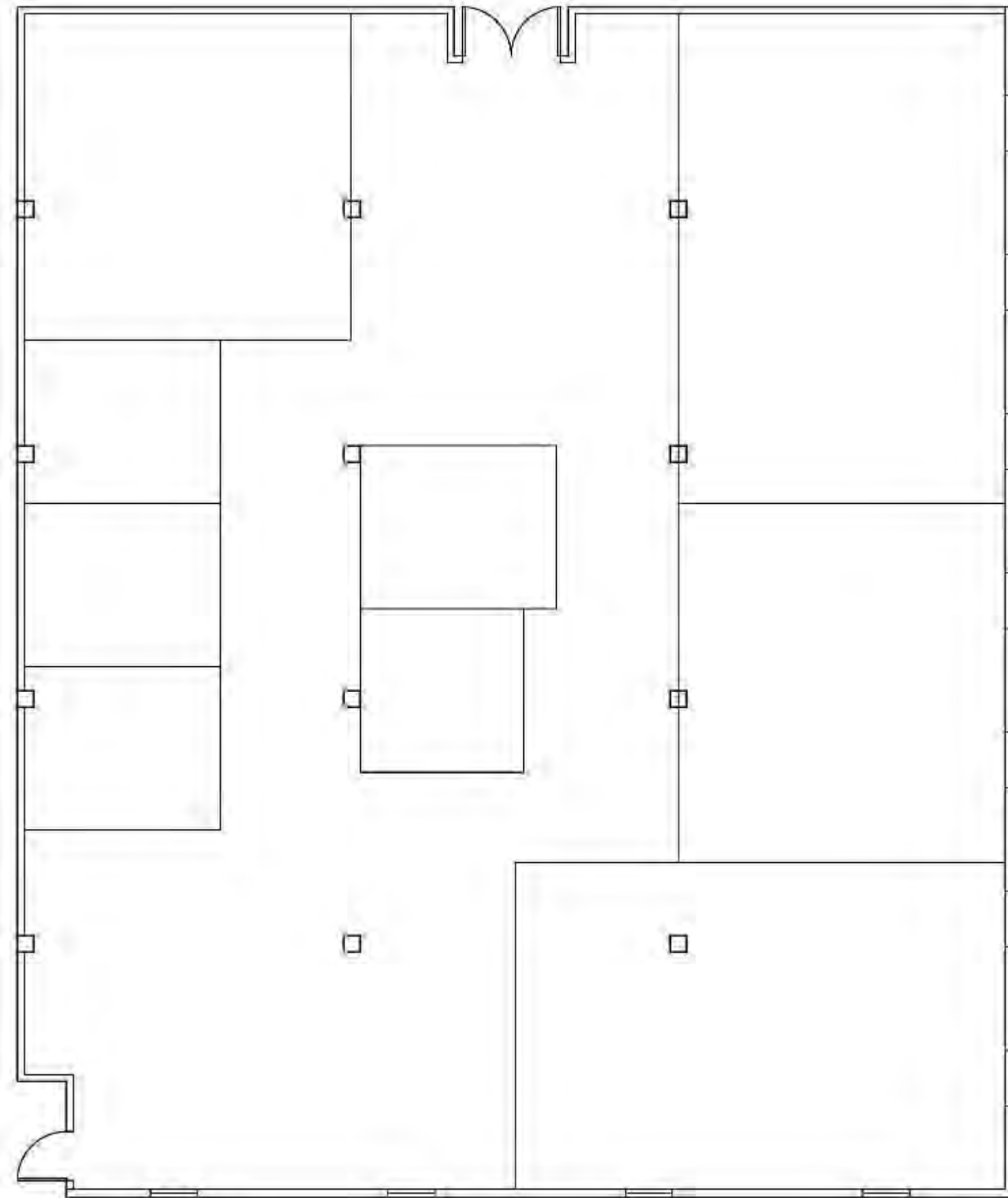
TOP FLOOR SKETCH



DRAWN TO 1/8" = 1' SCALE

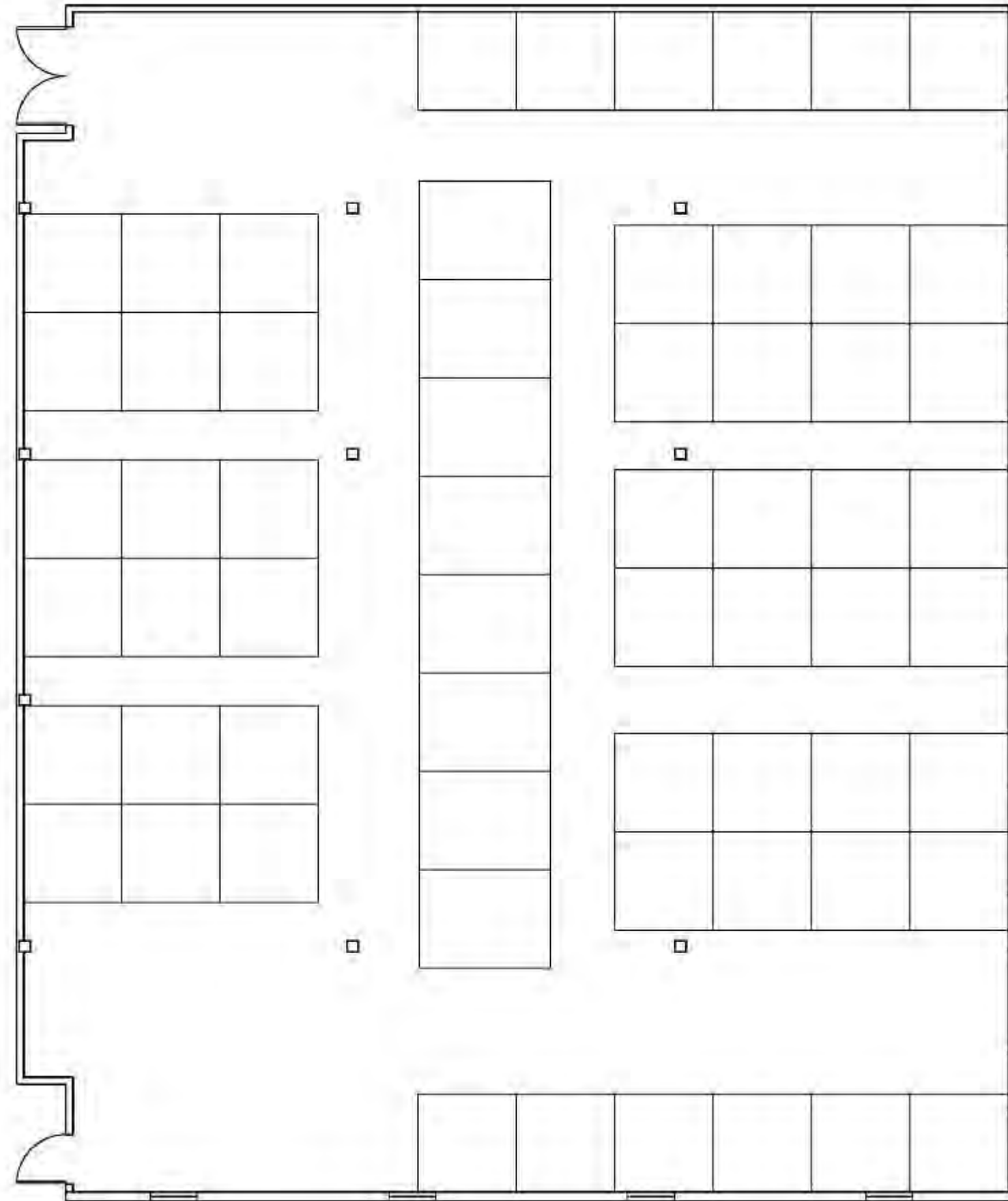
AUTO CAD SKETCHES

BOTTOM FLOOR 1



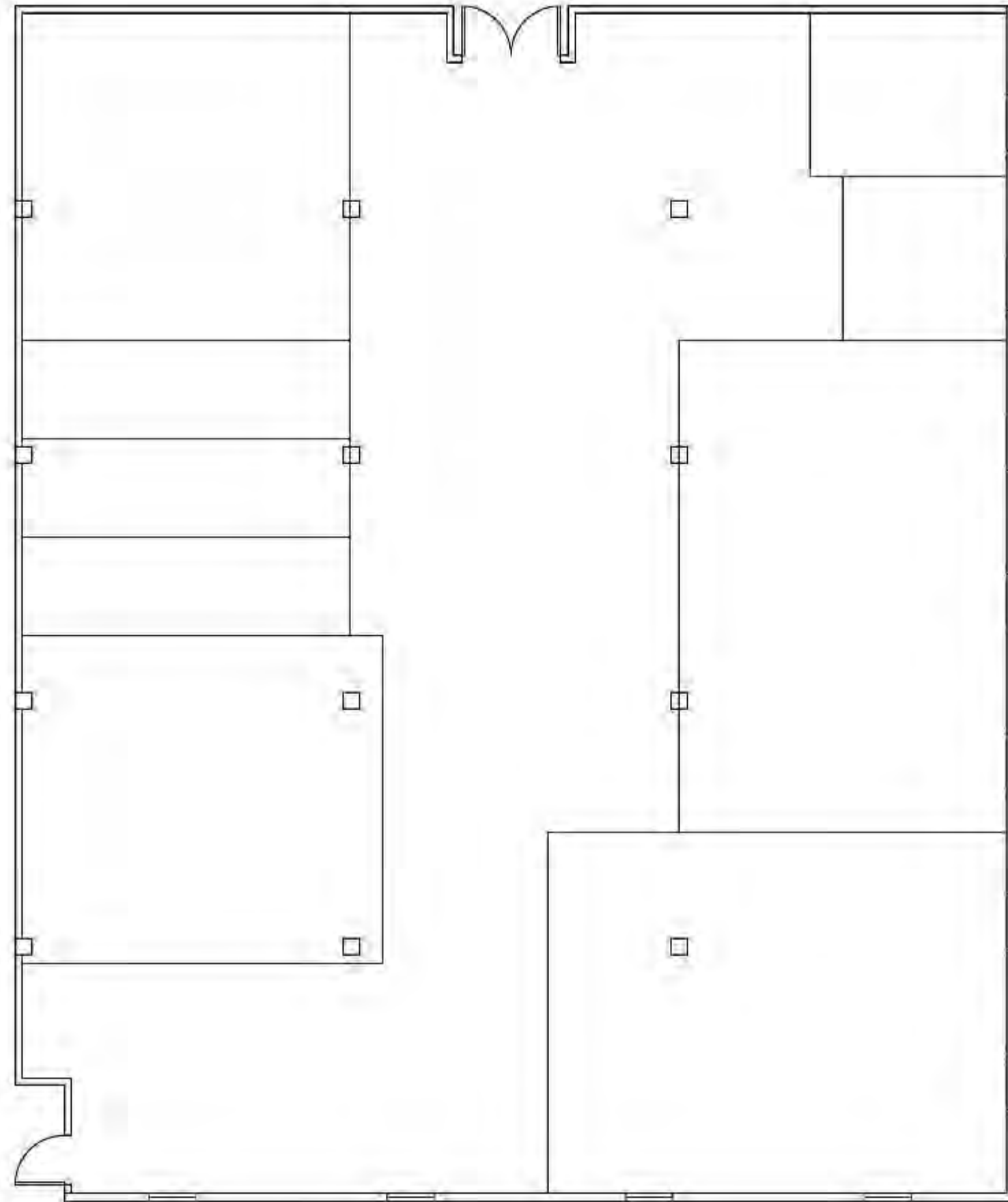
DRAWN TO 1/8" = 1' SCALE

TOP FLOOR 1



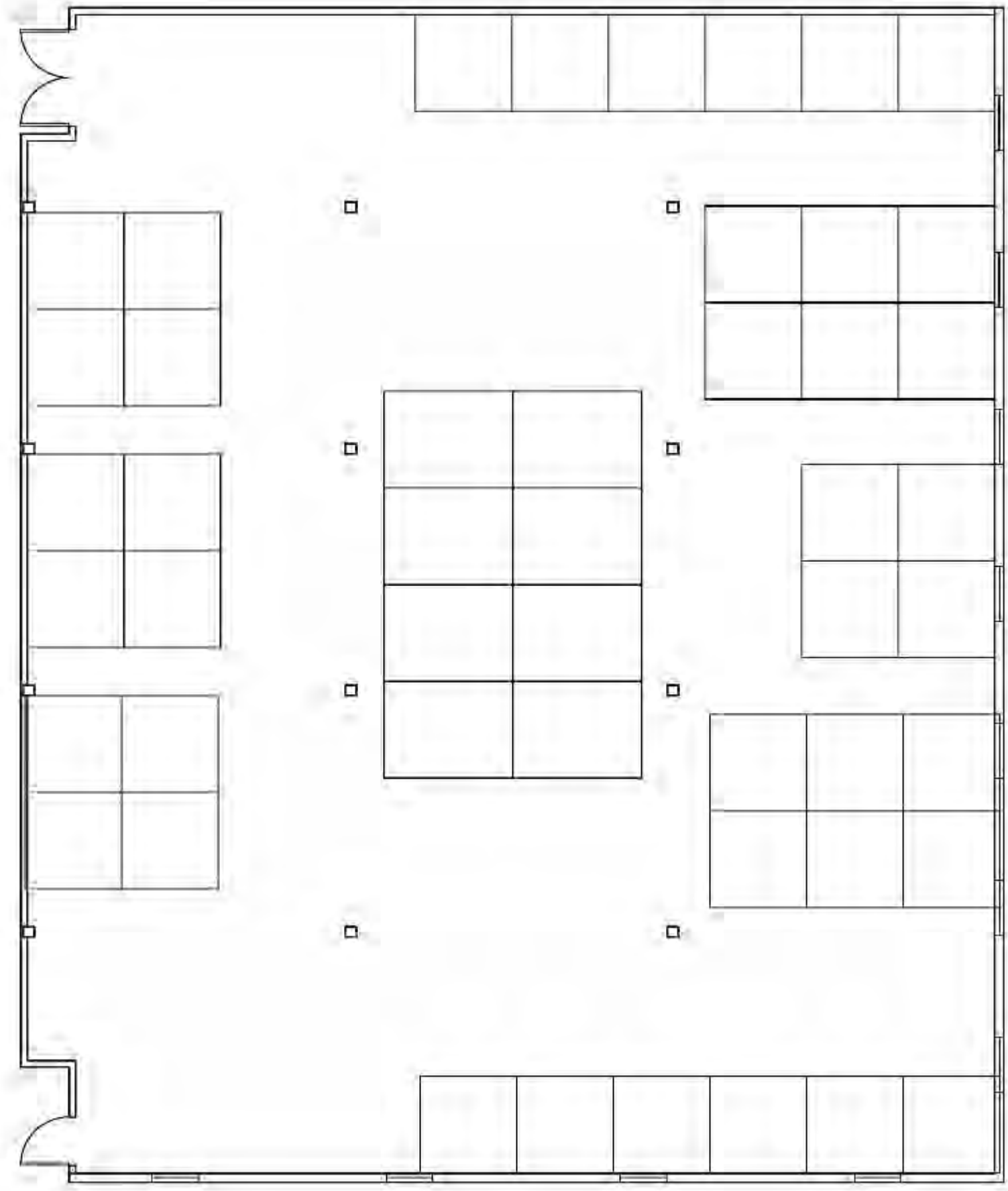
DRAWN TO 1/8" = 1' SCALE

BOTTOM FLOOR 2



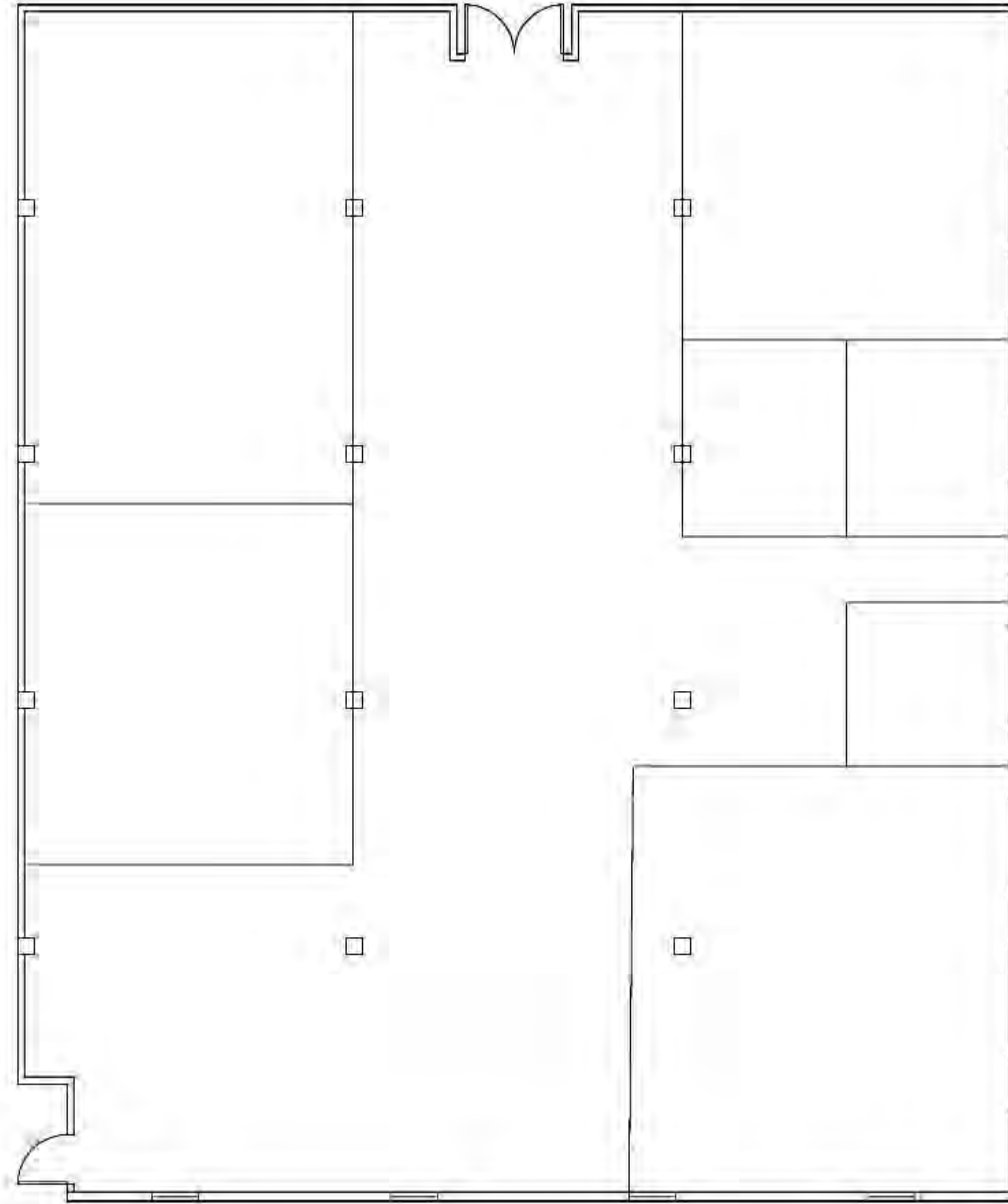
DRAWN TO 1/8" = 1' SCALE

TOP FLOOR 2



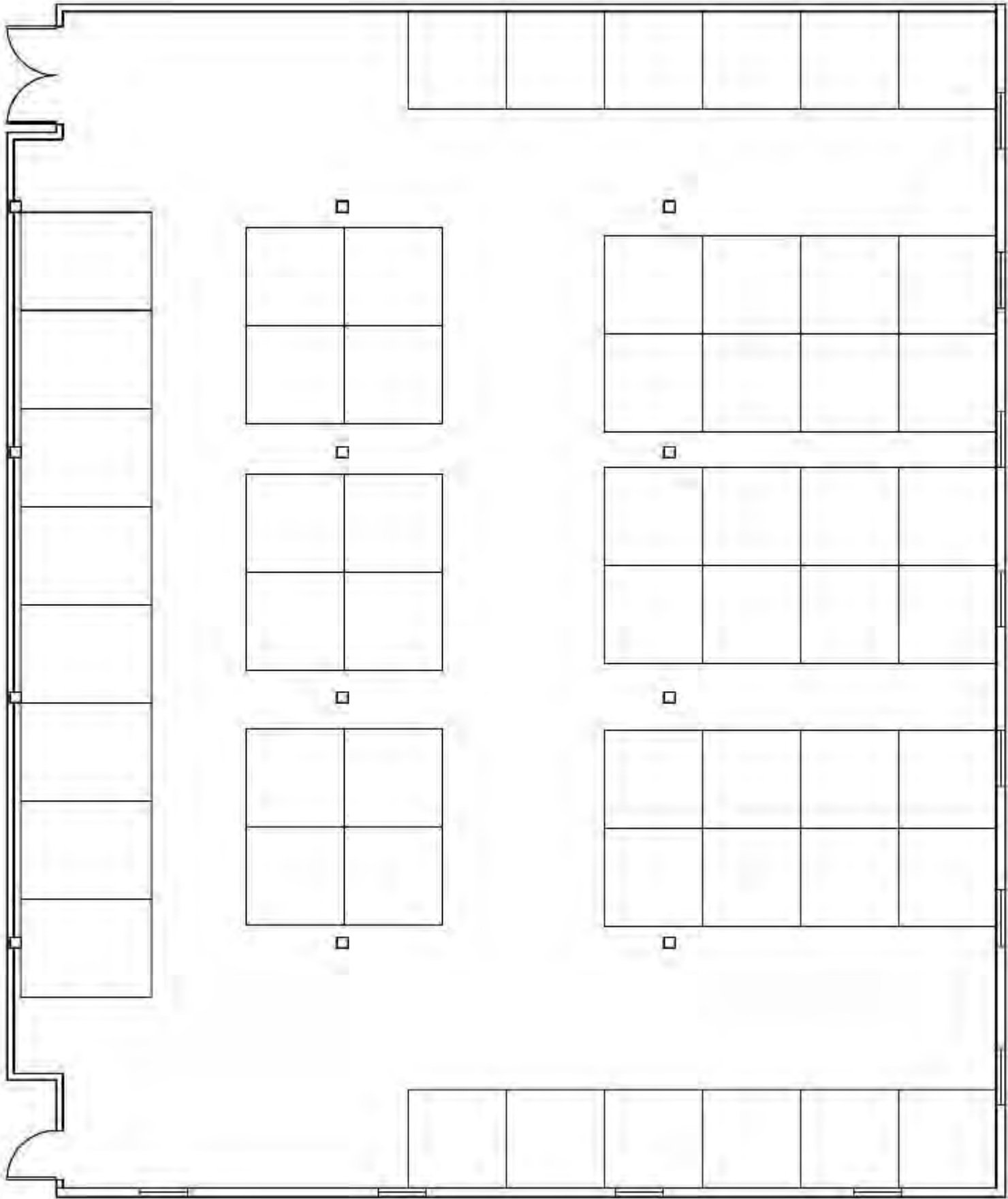
DRAWN TO 1/8" = 1' SCALE

BOTTOM FLOOR 3



DRAWN TO 1/8" = 1' SCALE

TOP FLOOR 3

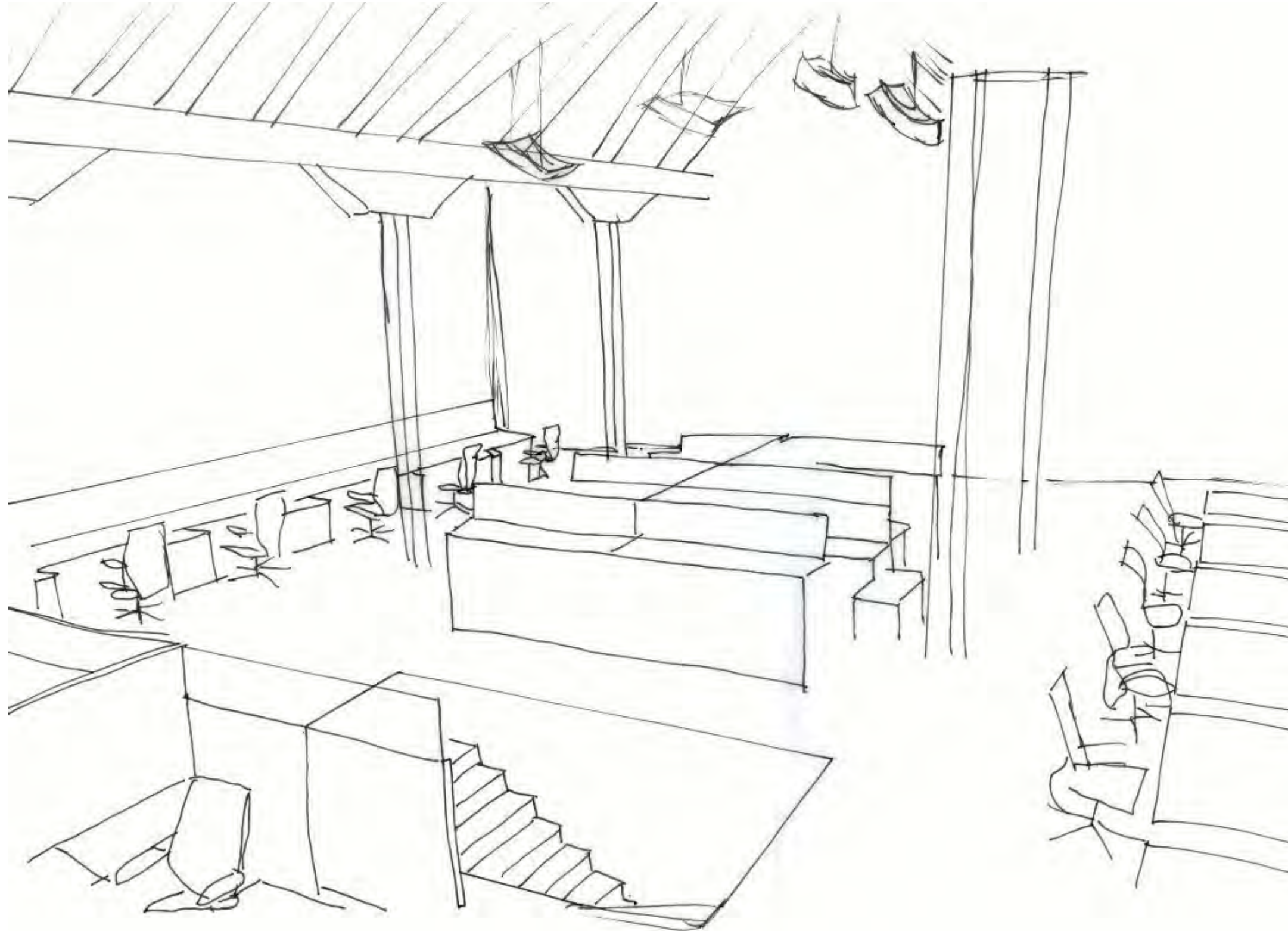


DRAWN TO 1/8" = 1' SCALE

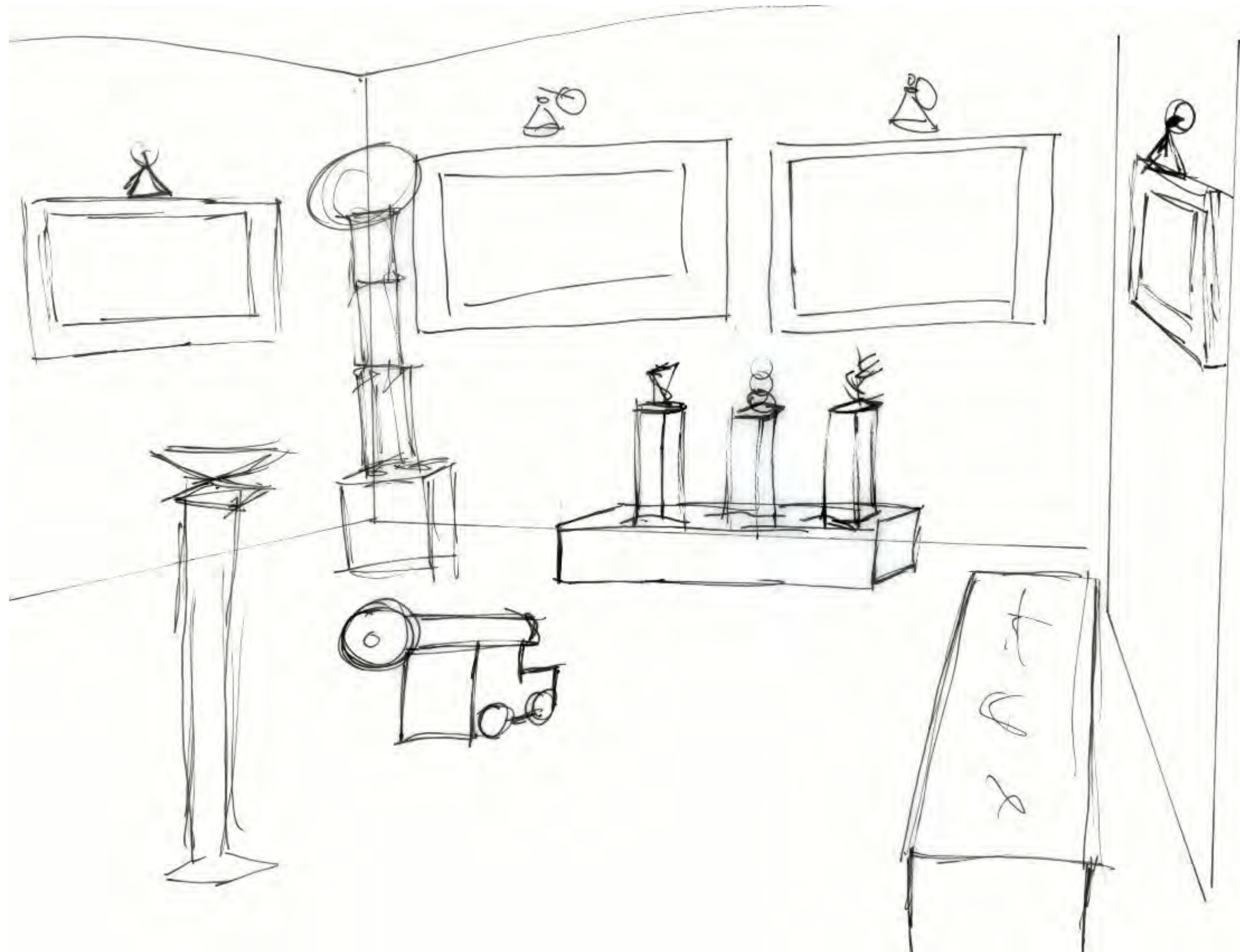
PERSPECTIVES

TRACE OVERLAY SKETCHES

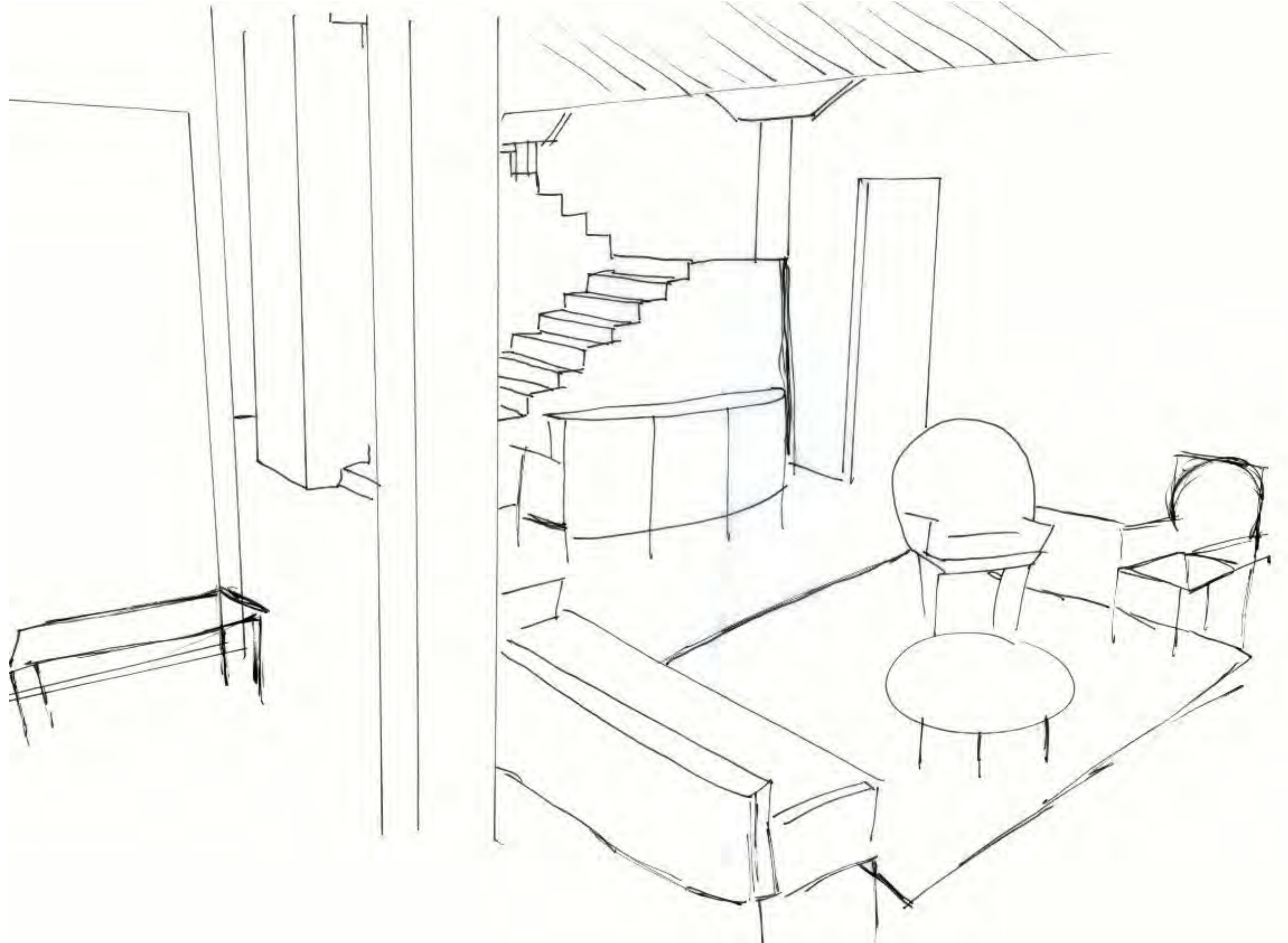
WORK AREA



EXHIBITION



RECEPTION



PANTRY



SKETCHUP MODEL

PANTRY



RECEPTION



EXHIBITION



WORK AREA



CONCEPT STATEMENT

- THE COASTAL BIRD, THE HERON
- DESIGN INSPIRATION DERIVES FROM THE WAY THAT THE HERONS MOVE DURING THEIR FEEDING ROUTINES AND THEIR MIGRATION
- COLORS INSPIRED FROM THE HERON, BLUES, PURPLES AND GREYS
- BRINGING THE COASTAL SOUTH TO GREENVILLE, NORTH CAROLINA



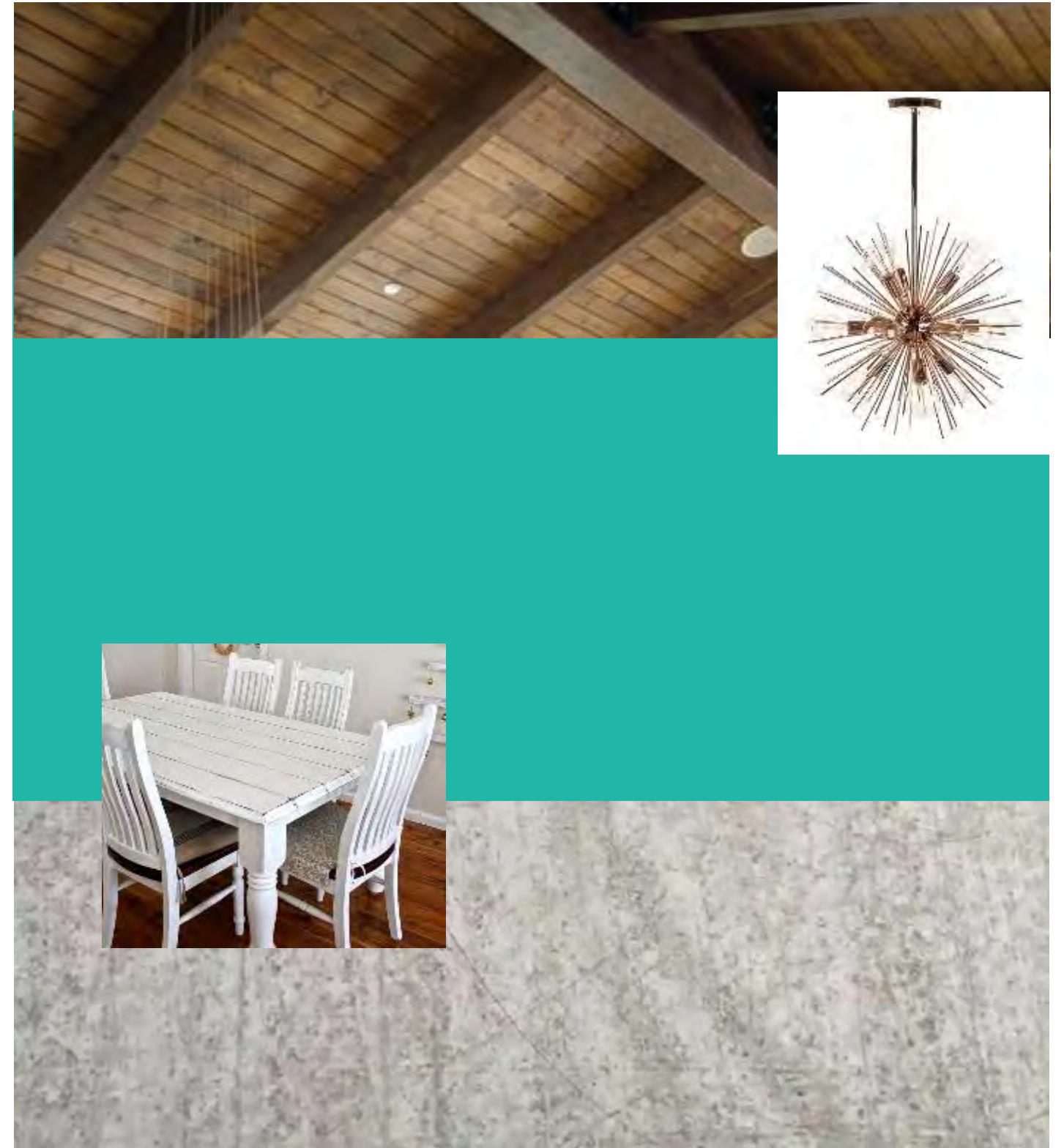
INSPIRATION IMAGES



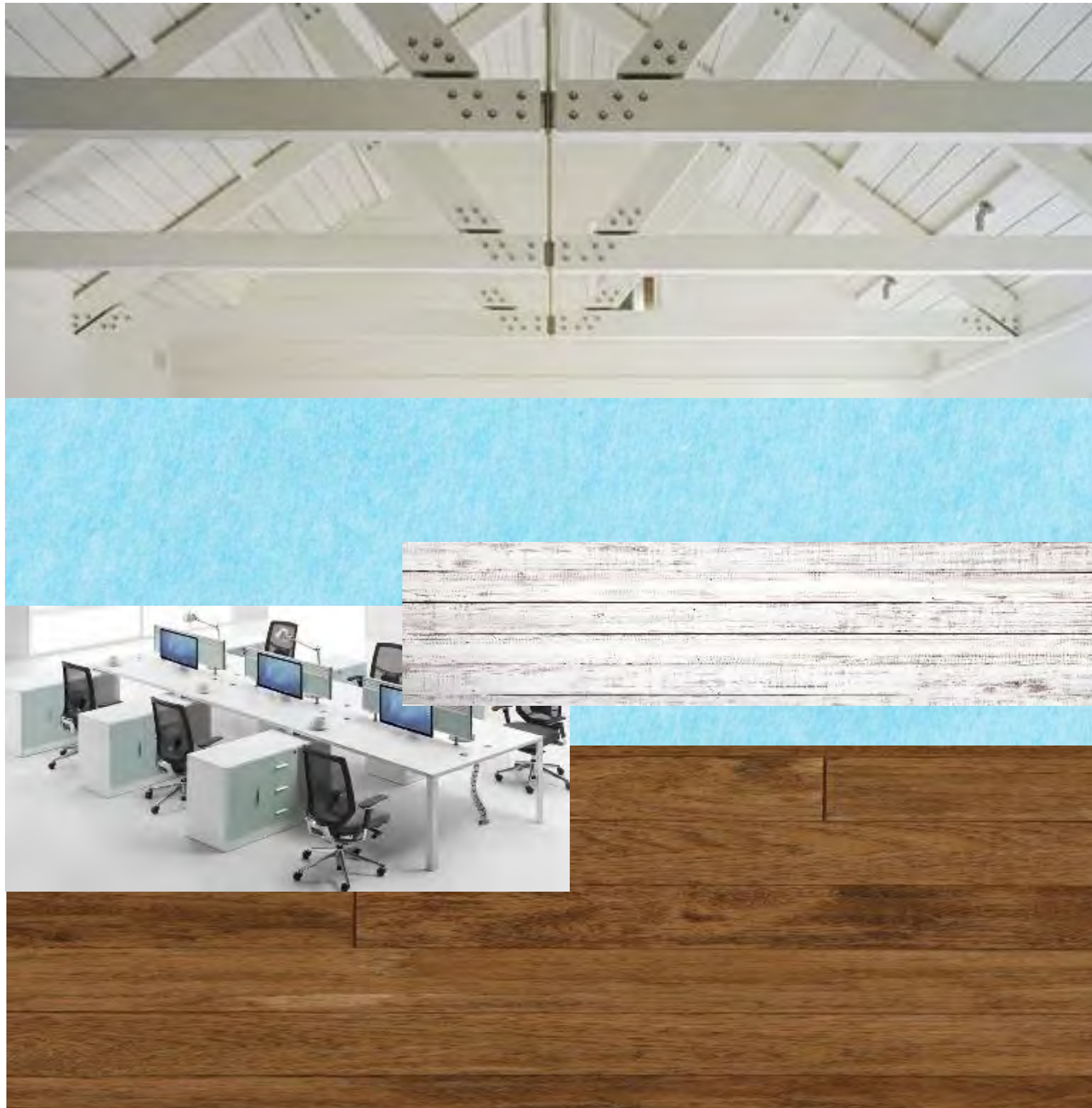
ARCHITECTURAL FURNITURE AND FINISHES

- THE COLORS USED IN EVERY SPACE ARE INSPIRED FROM THE COASTAL BIRD, THE HERON
- THE WOOD PLANKS ARE FROM THE COASTAL SOUTH
- THE WAVE SHAPED LIGHTING IS REPRESENTING THE FEATHERS ON THE HERON

PANTRY



WORK AREA

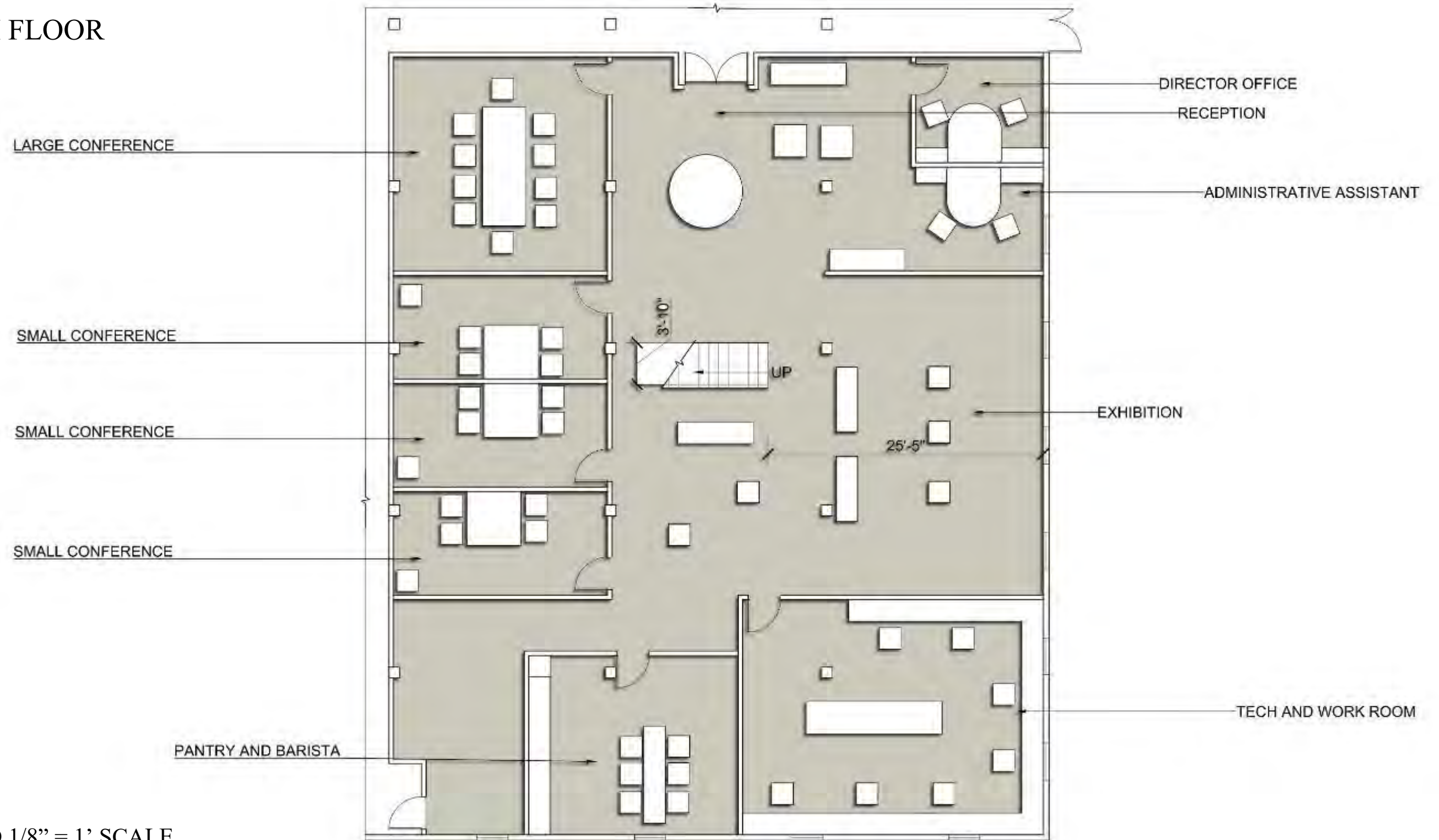


EXHIBITION AND RECEPTION



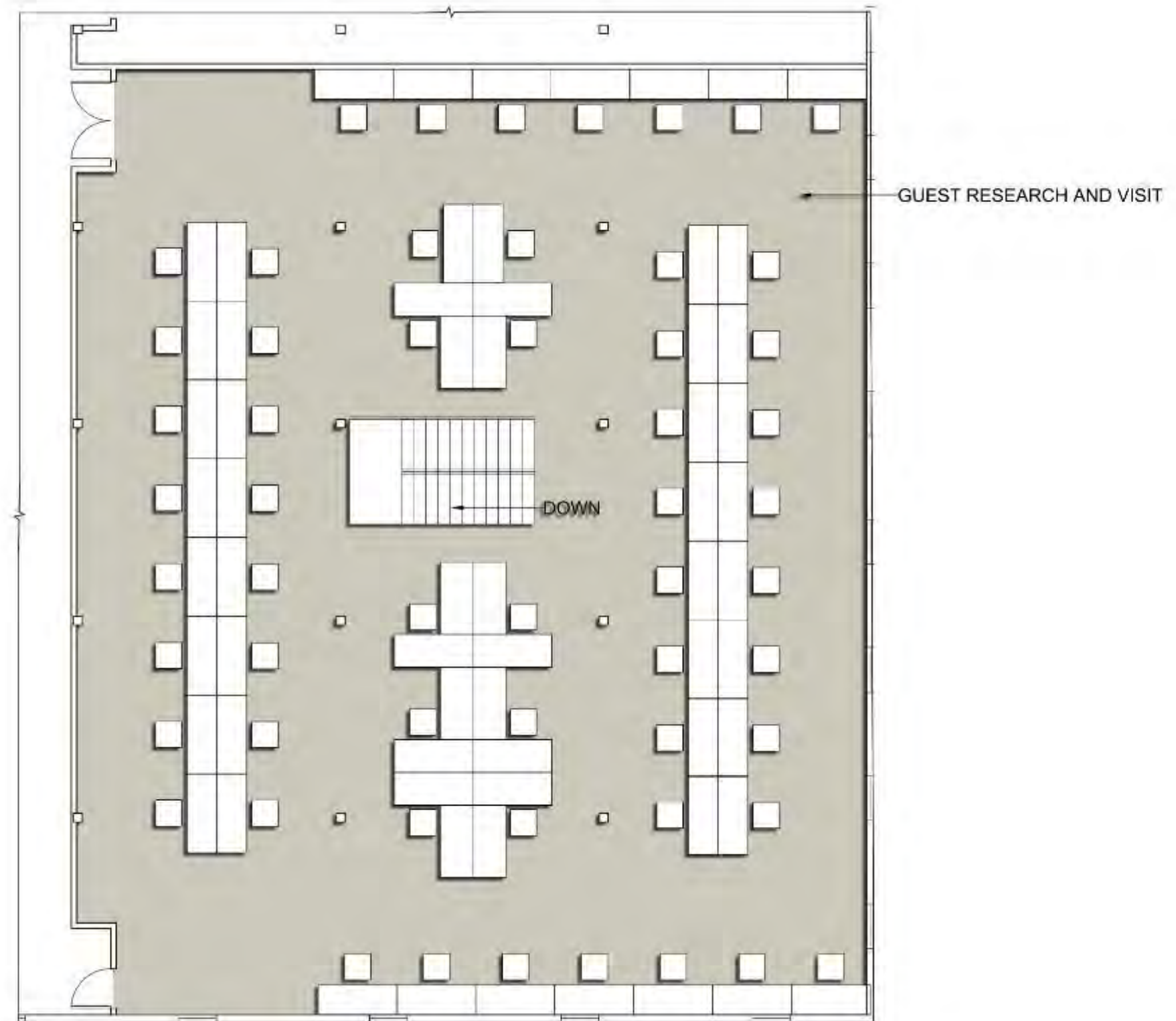
FINAL PLAN

BOTTOM FLOOR



DRAWN TO 1/8" = 1' SCALE

TOP FLOOR



DRAWN TO 1/8" = 1' SCALE