

The background is a painting of a coastal landscape. In the foreground, there is a dirt path that leads from the bottom center towards the middle ground. The path is flanked by tall, green grasses. In the middle ground, the path leads to a sandy beach. The ocean is visible in the distance, with a few small sailboats on the water. The sky is a deep blue with some white clouds. The overall style is impressionistic, with visible brushstrokes and a rich color palette.

Coastal

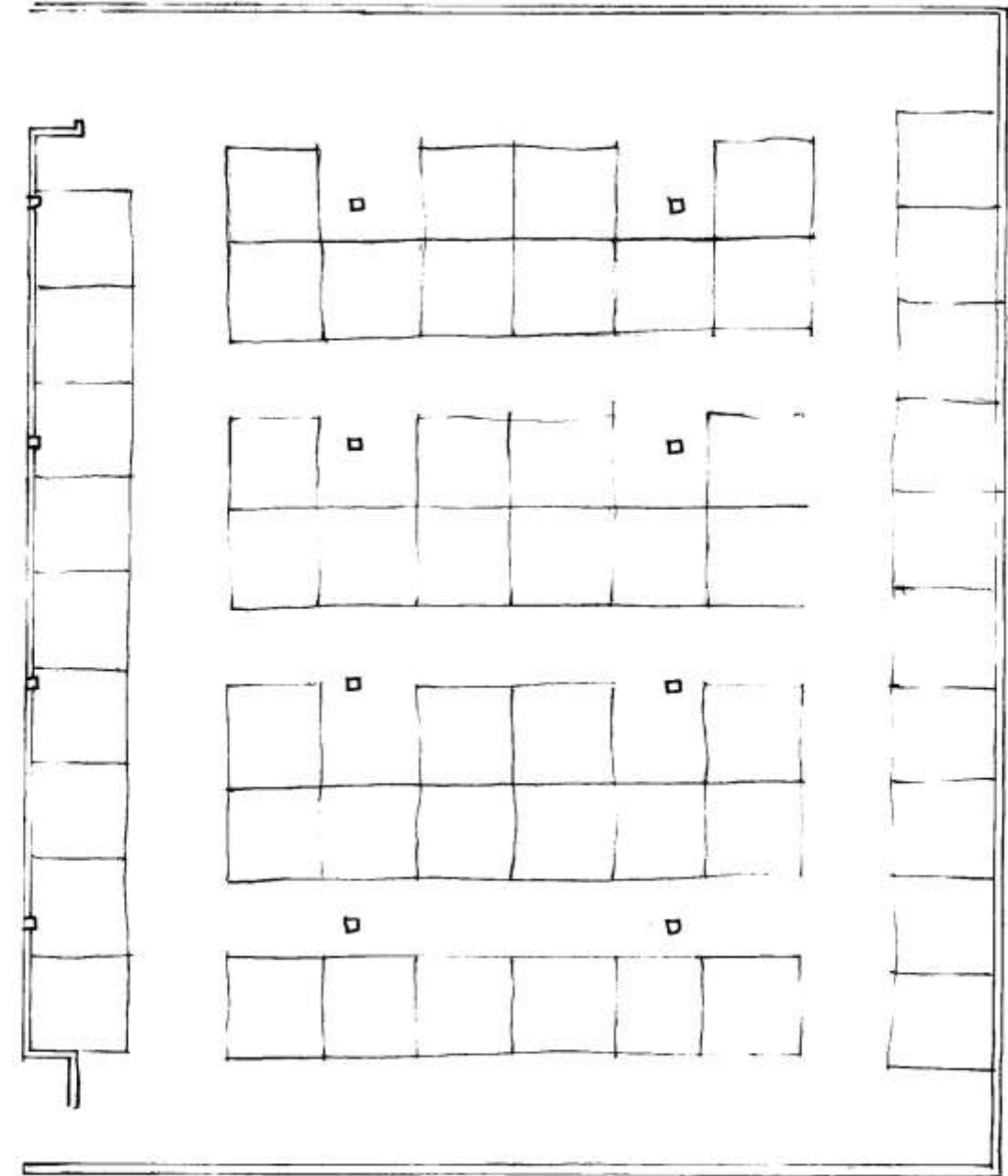
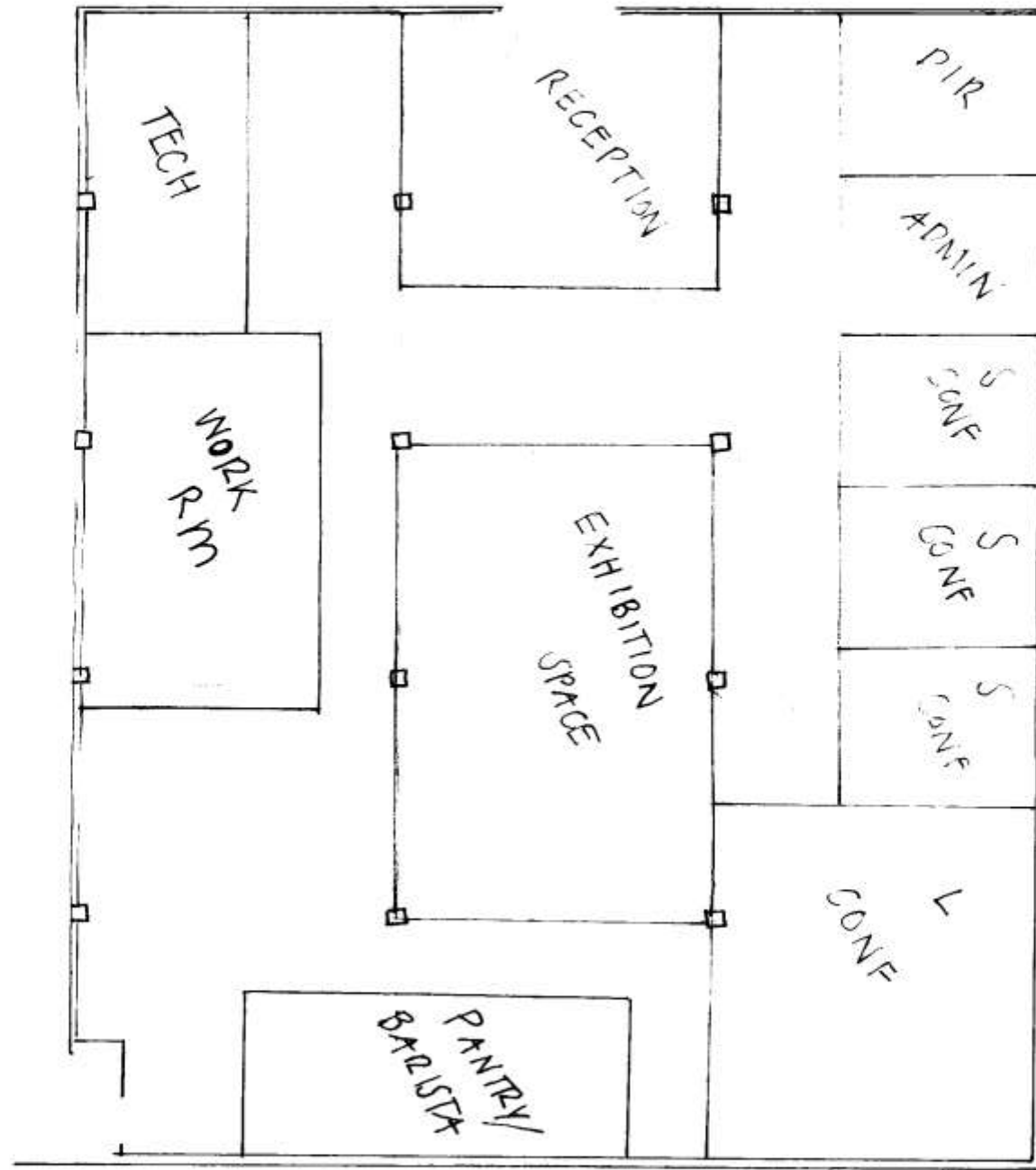
Shelbi Weatherman

Portfolio 2

IDSN 2102

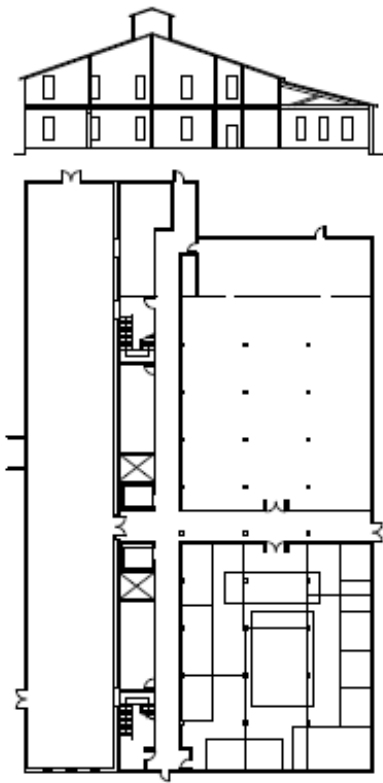
Fall 2017

Hand Sketch Space Plans

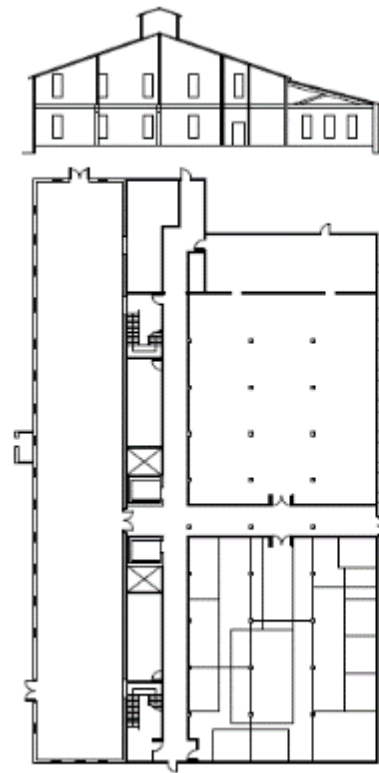
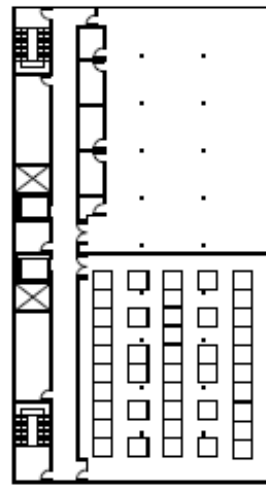


Option 1

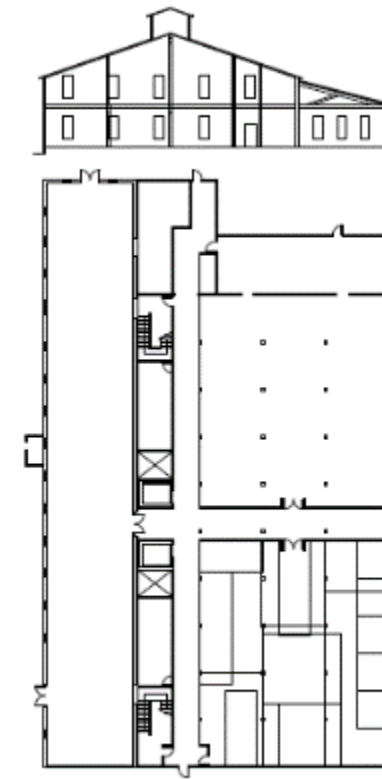
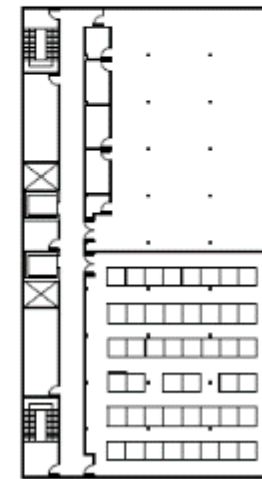
AutoCAD Space Plans



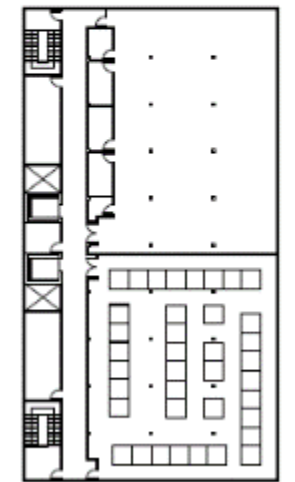
Option 2



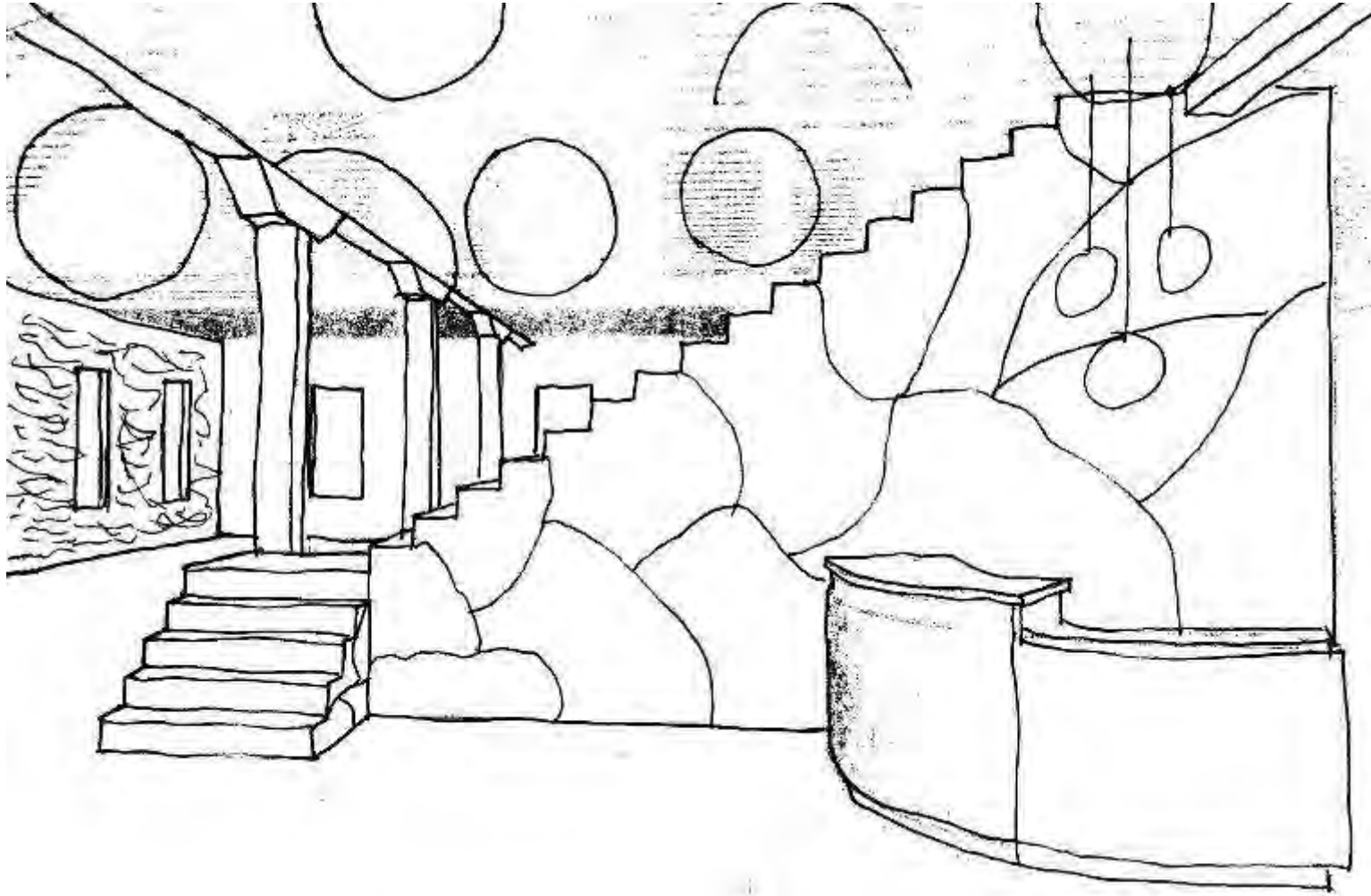
Option 3



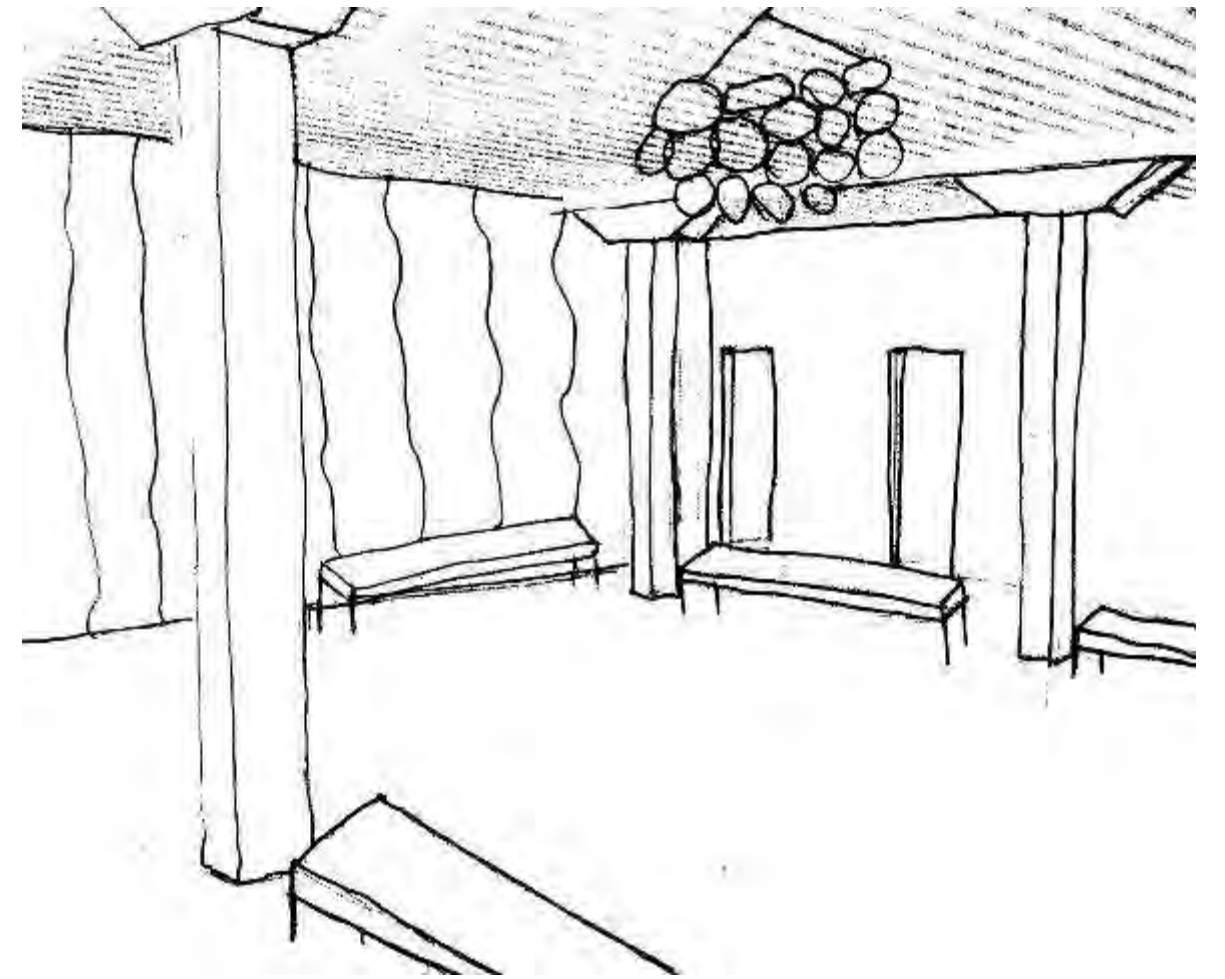
Option 4



Hand Sketch Perspective Views

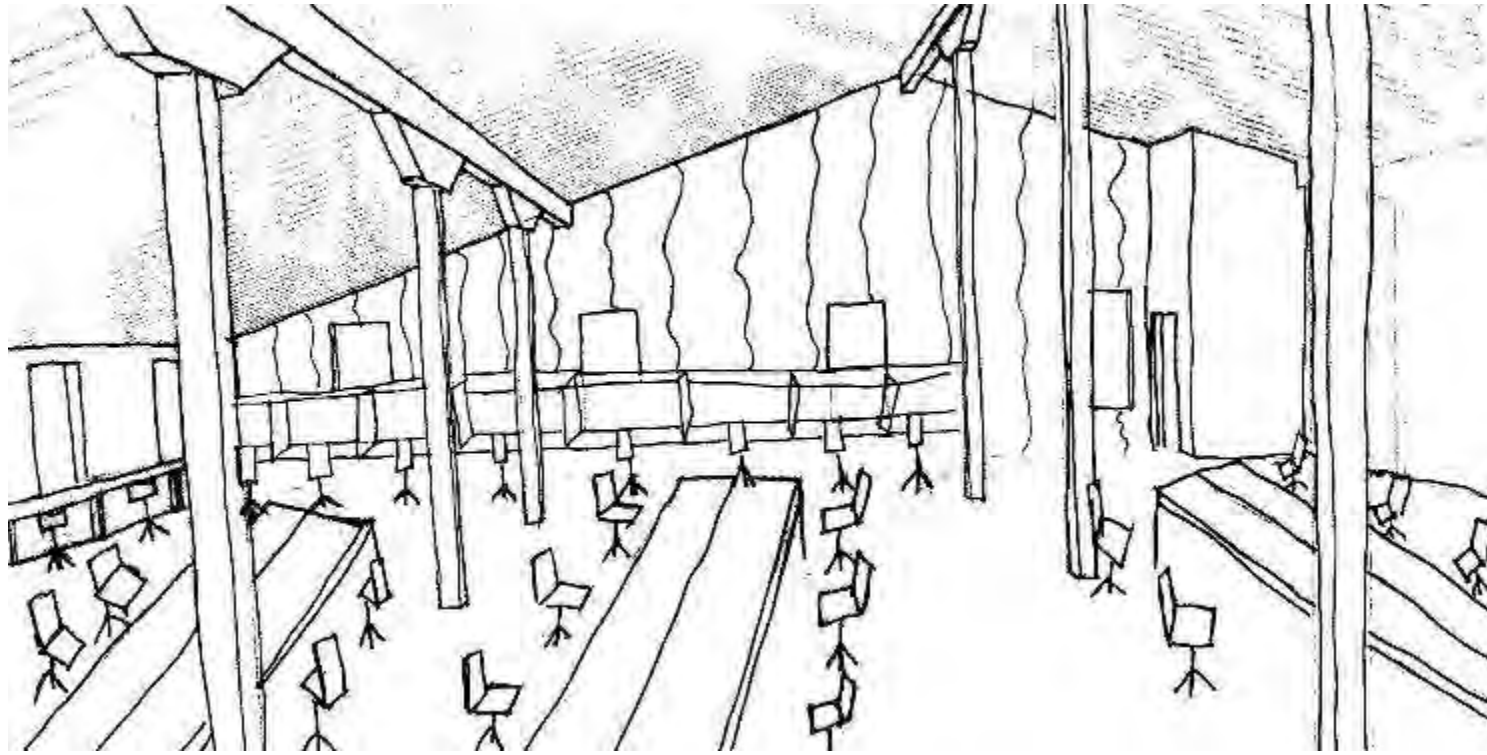


Entry

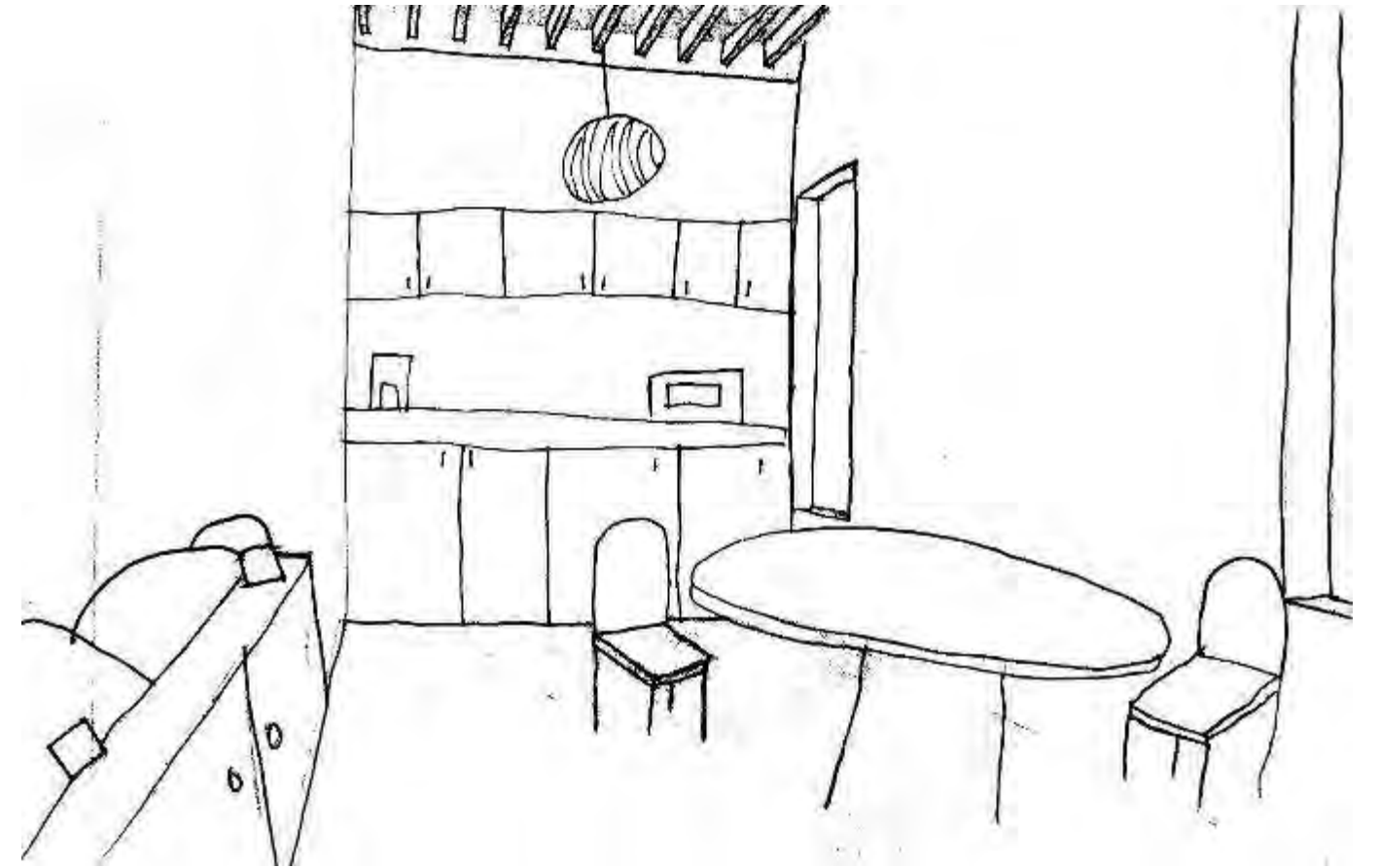


Exhibition

Hand Sketch Perspective Views

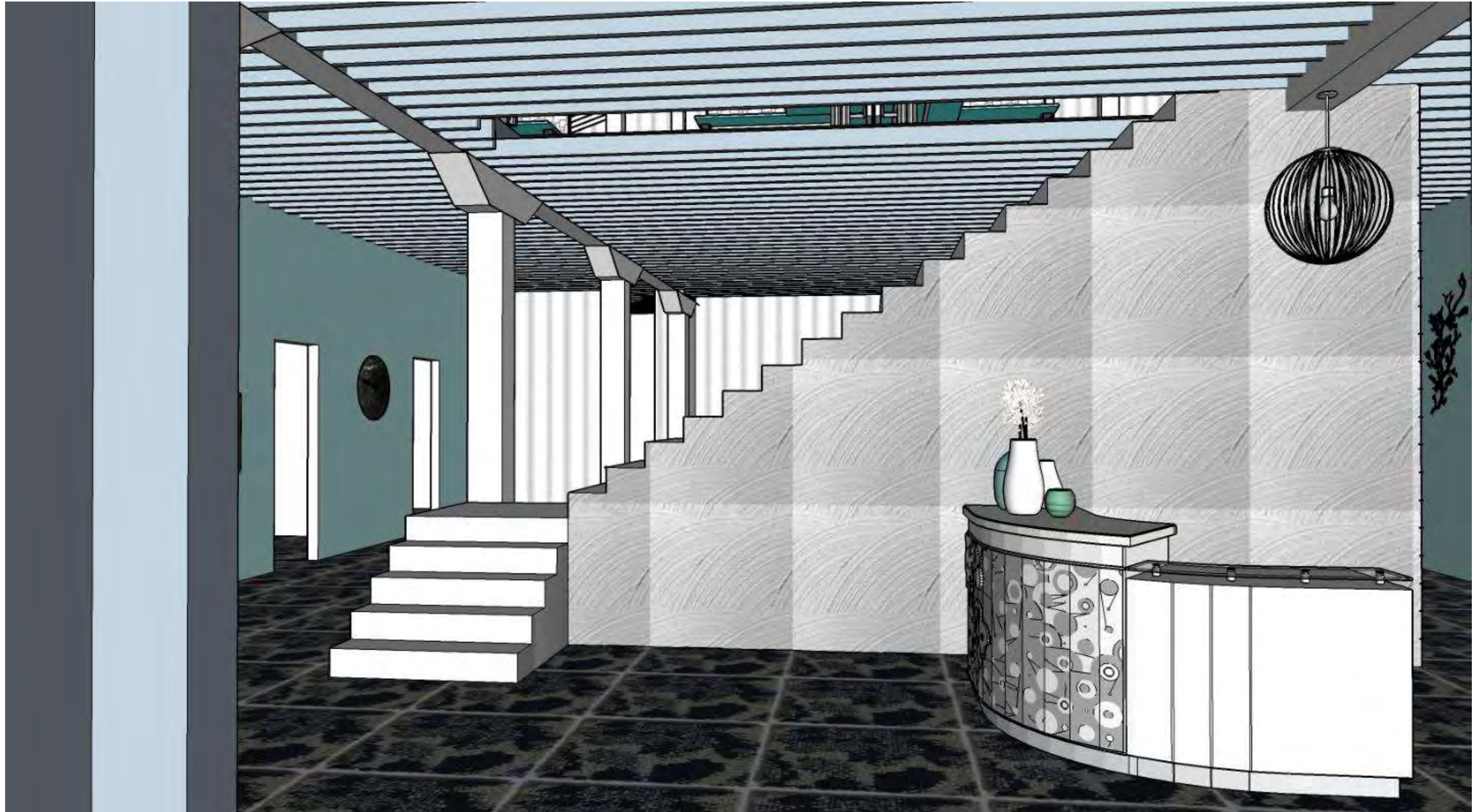


Workspace



Pantry

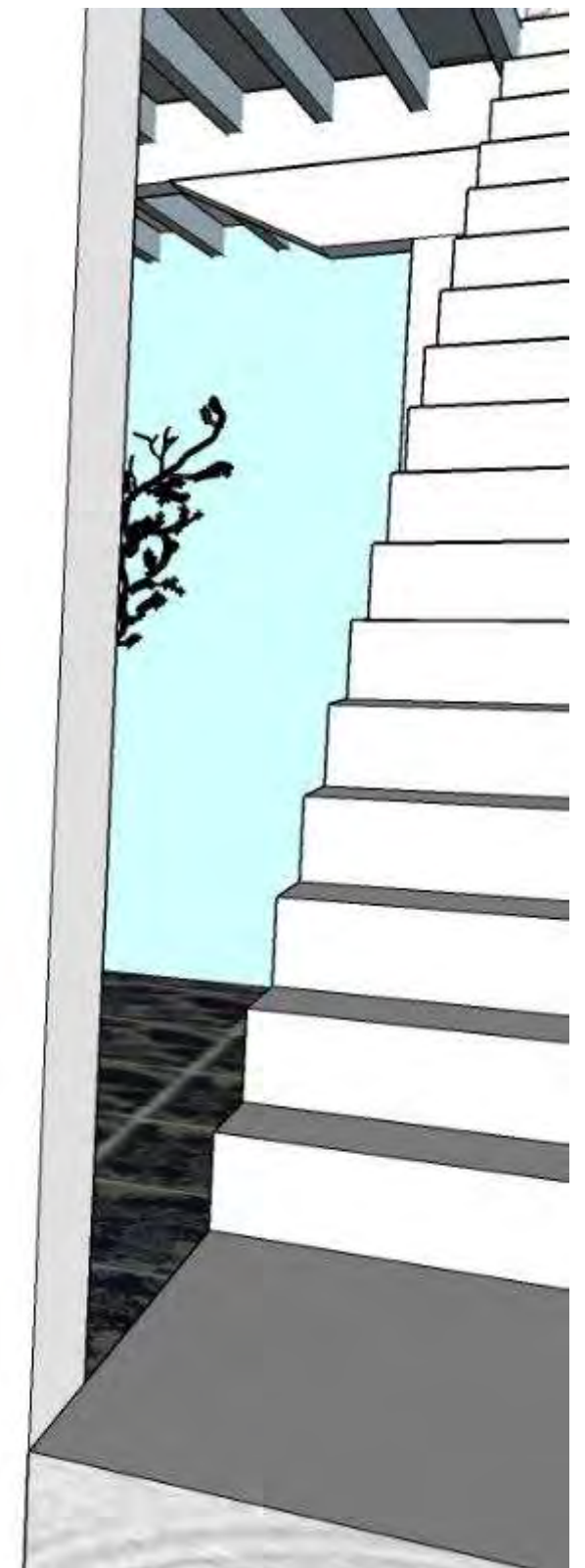
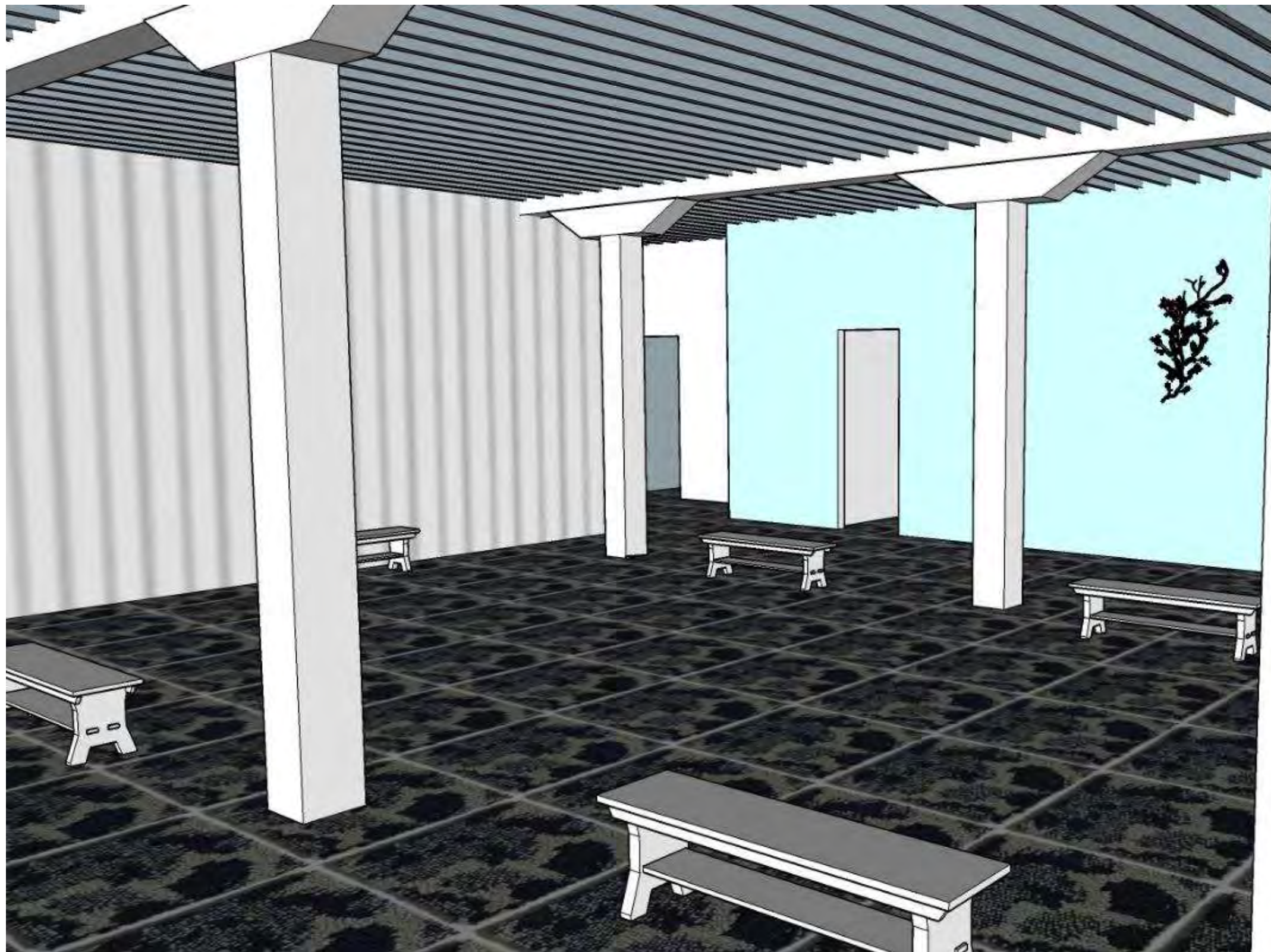
SketchUp Entry View 1



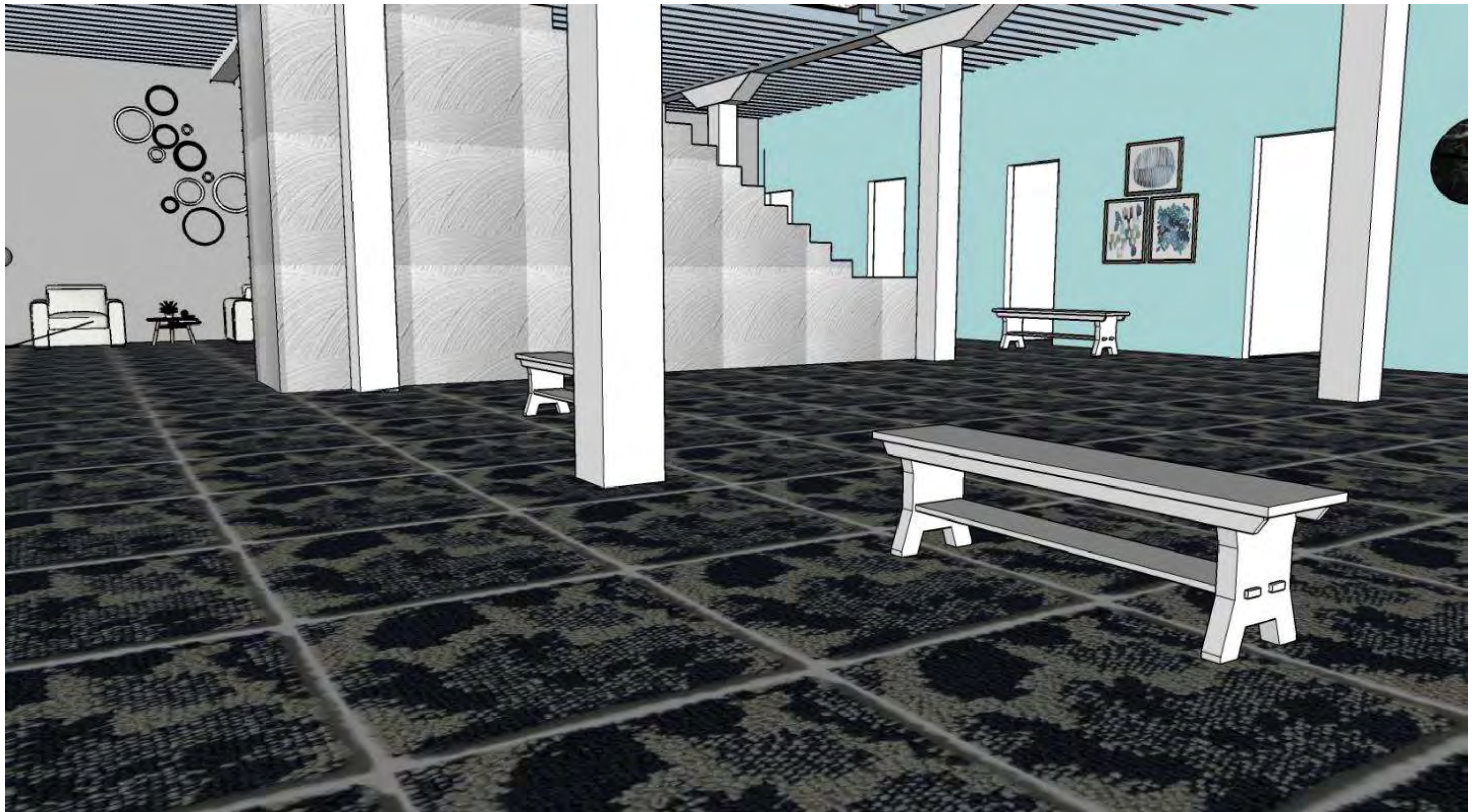
SketchUp Entry View 2



SketchUp Exhibition View 1



SketchUp Exhibition View 2



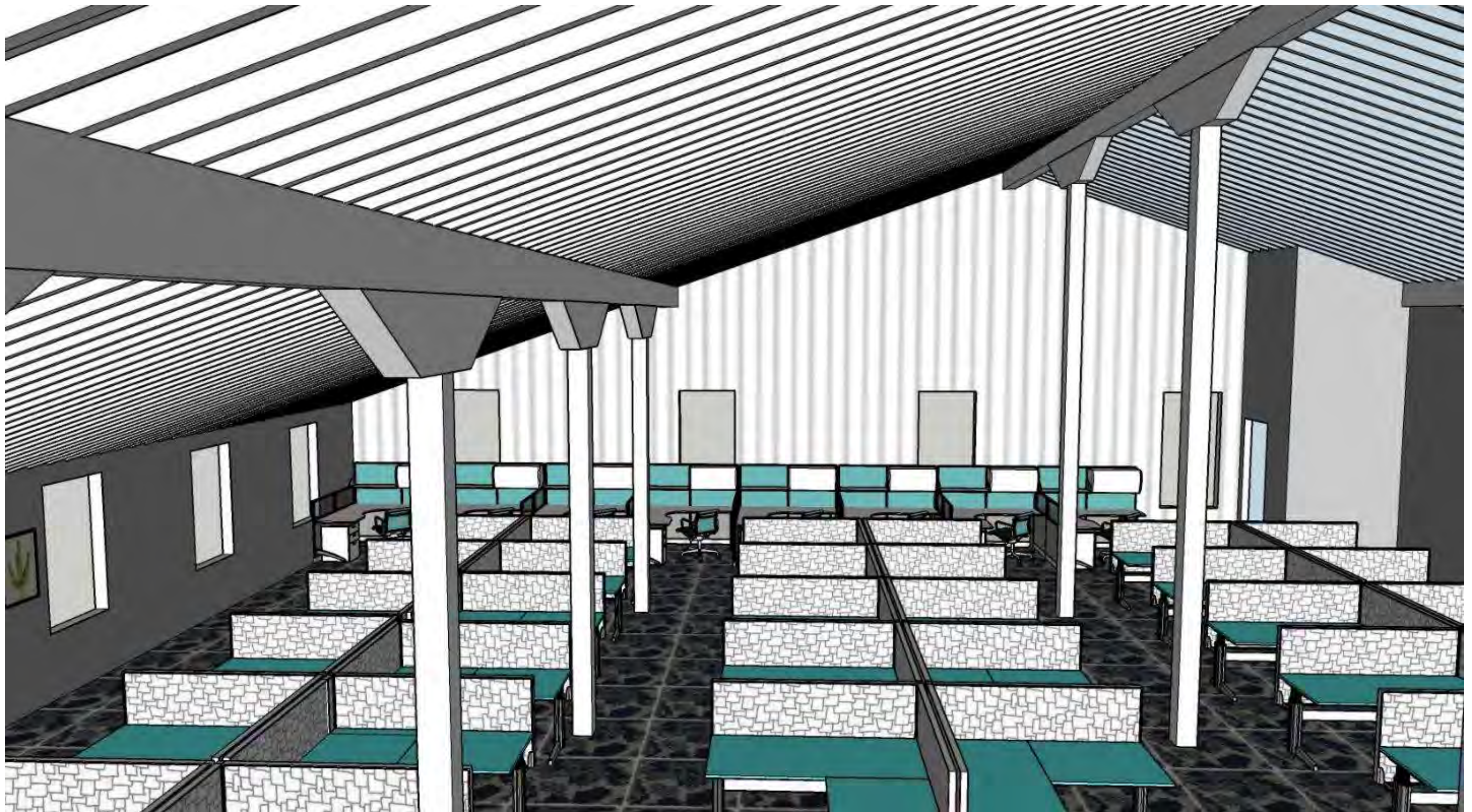
SketchUp Pantry View 1



SketchUp Pantry View 2



SketchUp Workspace View 1



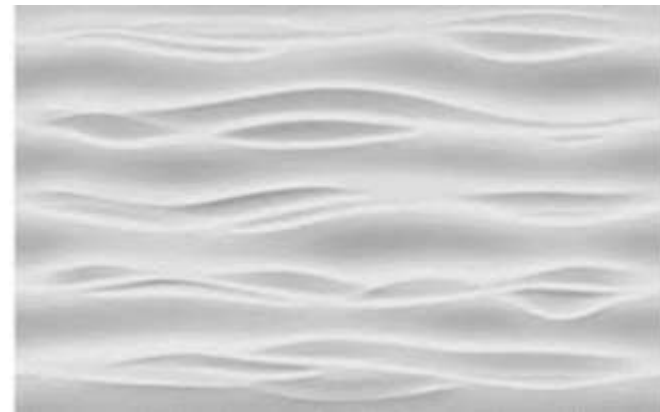
SketchUp Workspace View 2



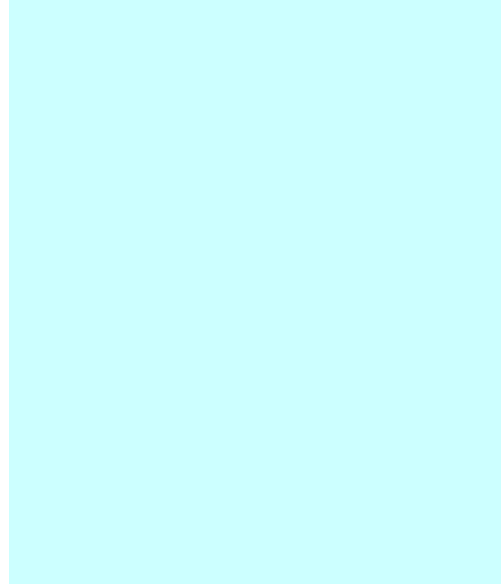
Concept Statement

- Neutral colors such as white, black, and gray with blue accents
- Textured materials such as the wave walls and the textured stairs to represent the coast (i.e: sea shells, waves, sand, coral)
- Open floor plan represents being on a beach, in the open space
- Clean simple design
- The building has a lot of natural light like being outside on the beach

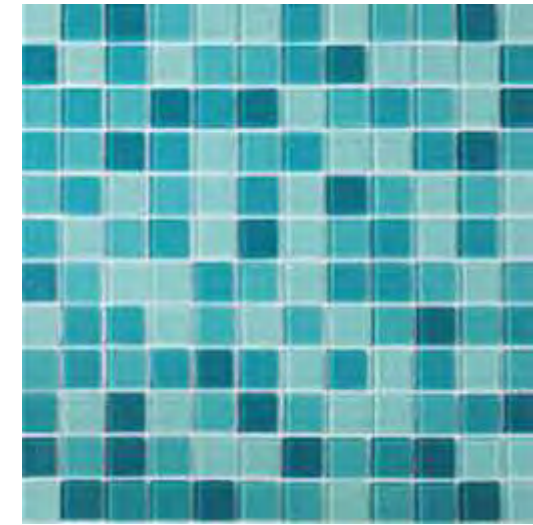




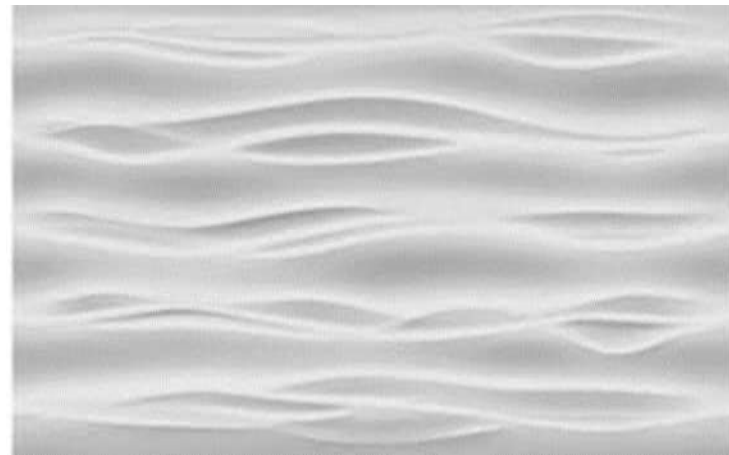
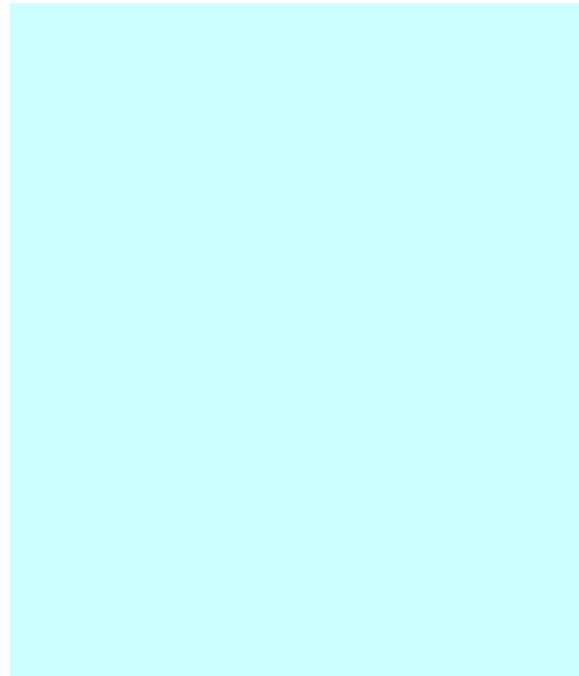
Entry



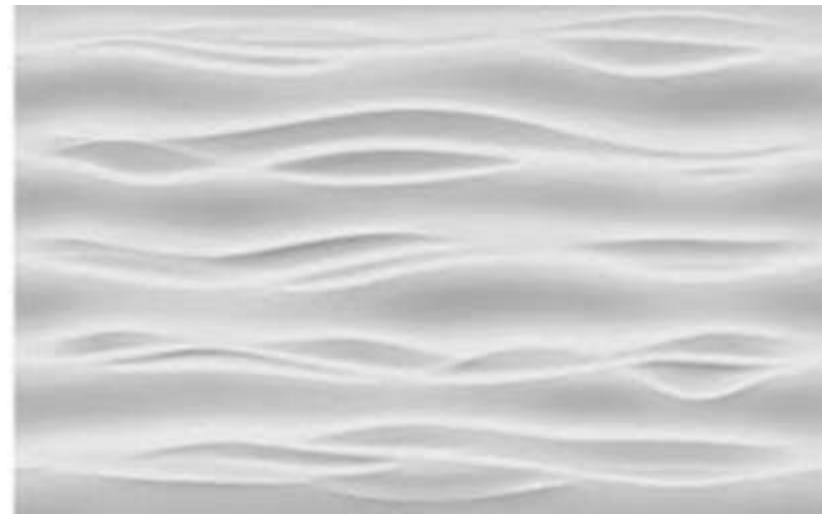
Pantry



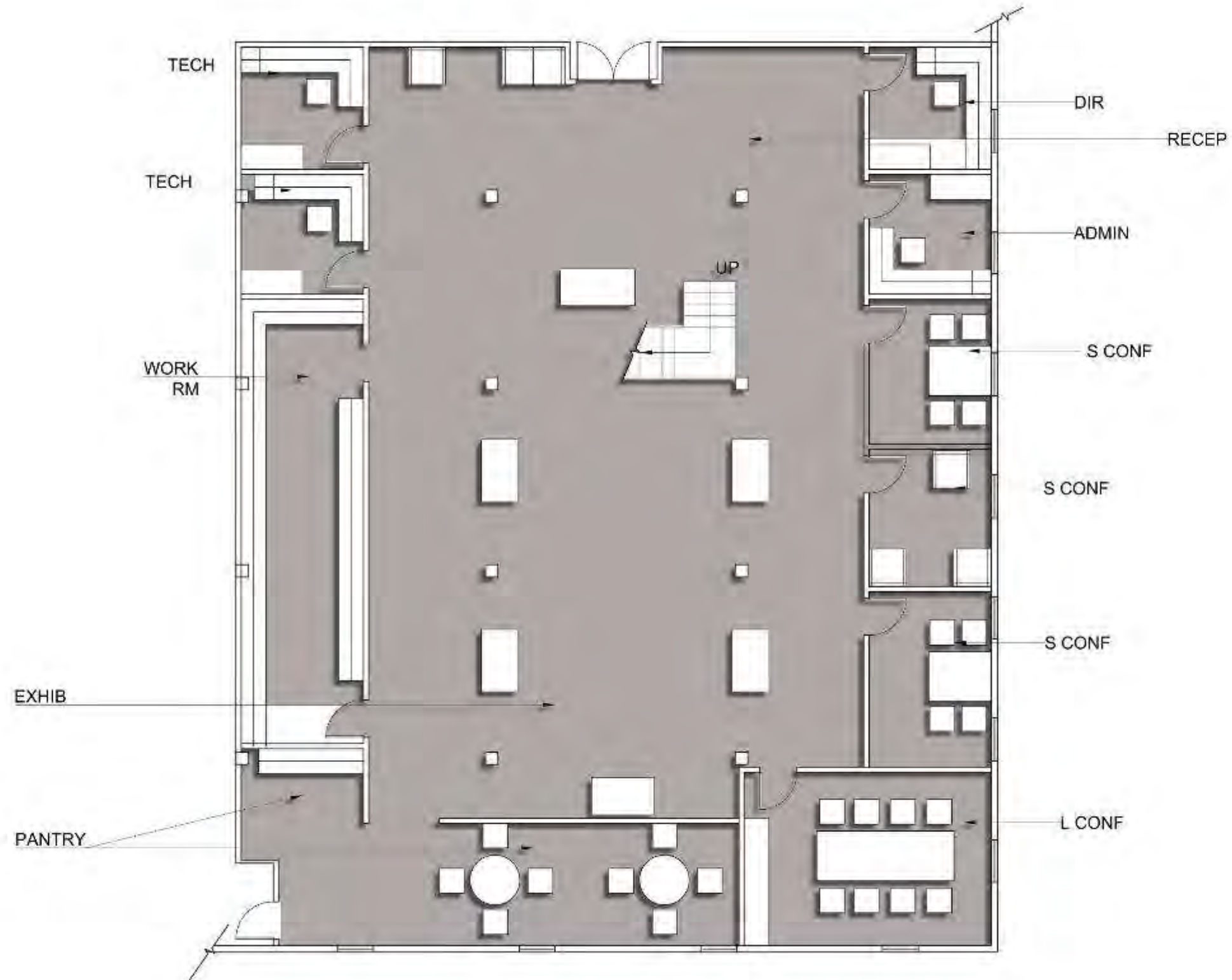
Exhibition



Work Space



AutoCAD Furniture Plan (Bottom Floor)



AutoCAD Furniture Plan (Top Floor)

