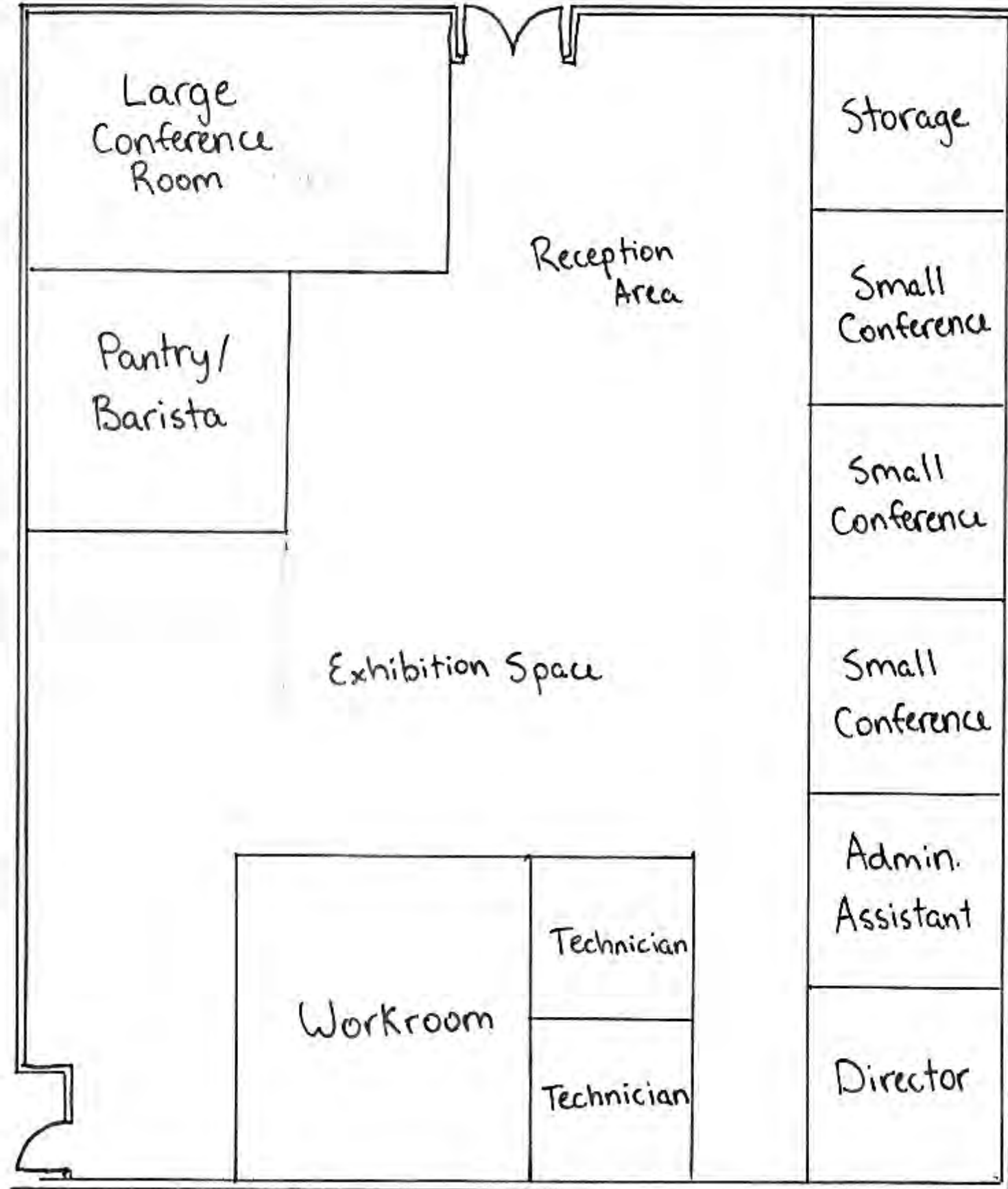
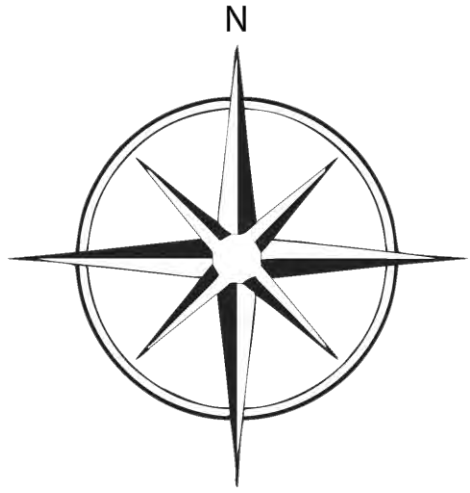


IDSN 2101 Second Portfolio



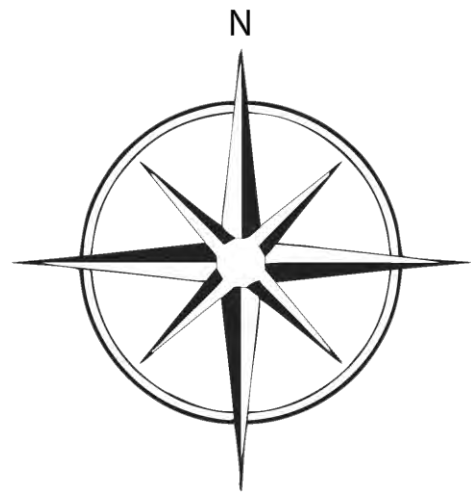
Billy Weschler



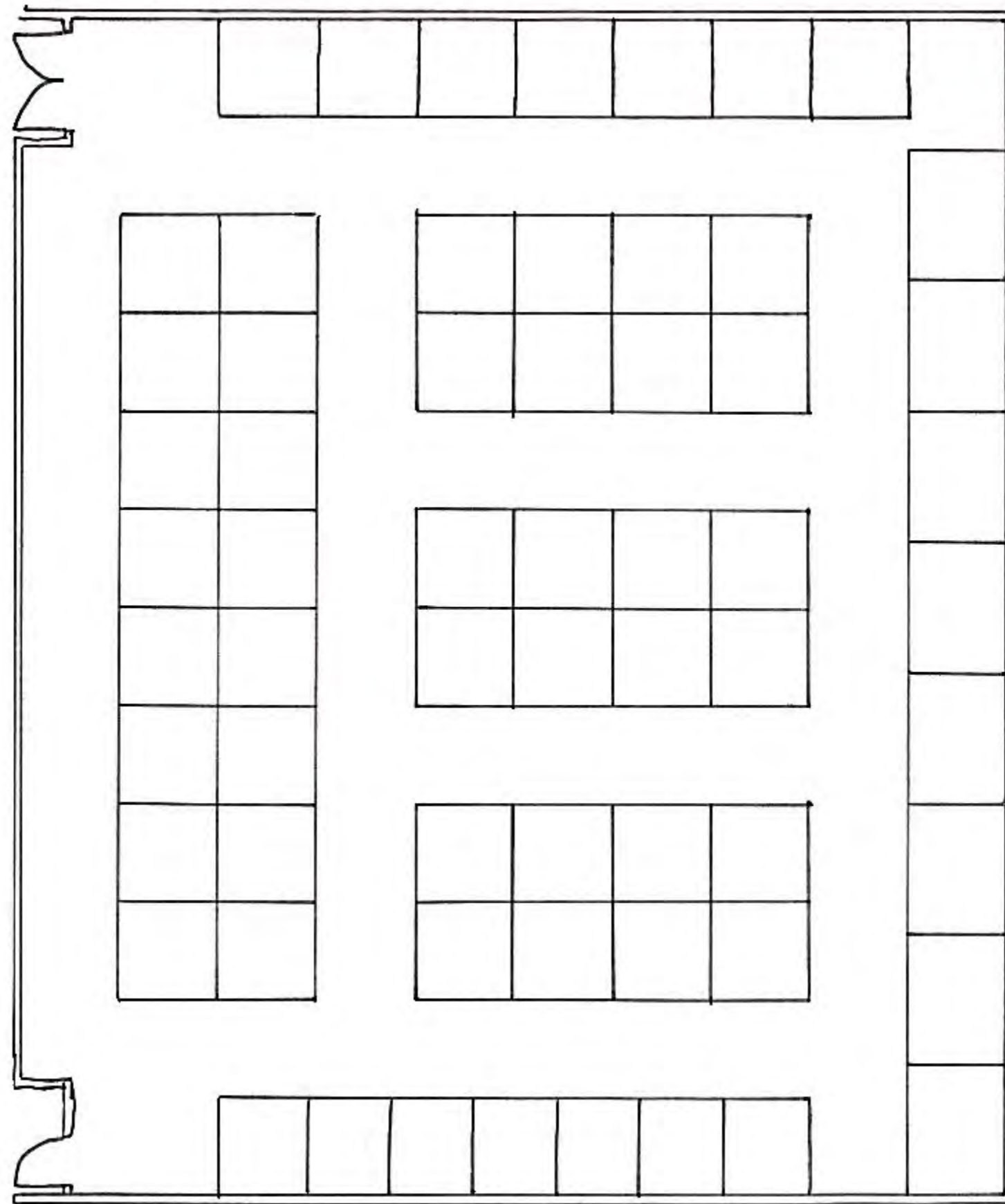


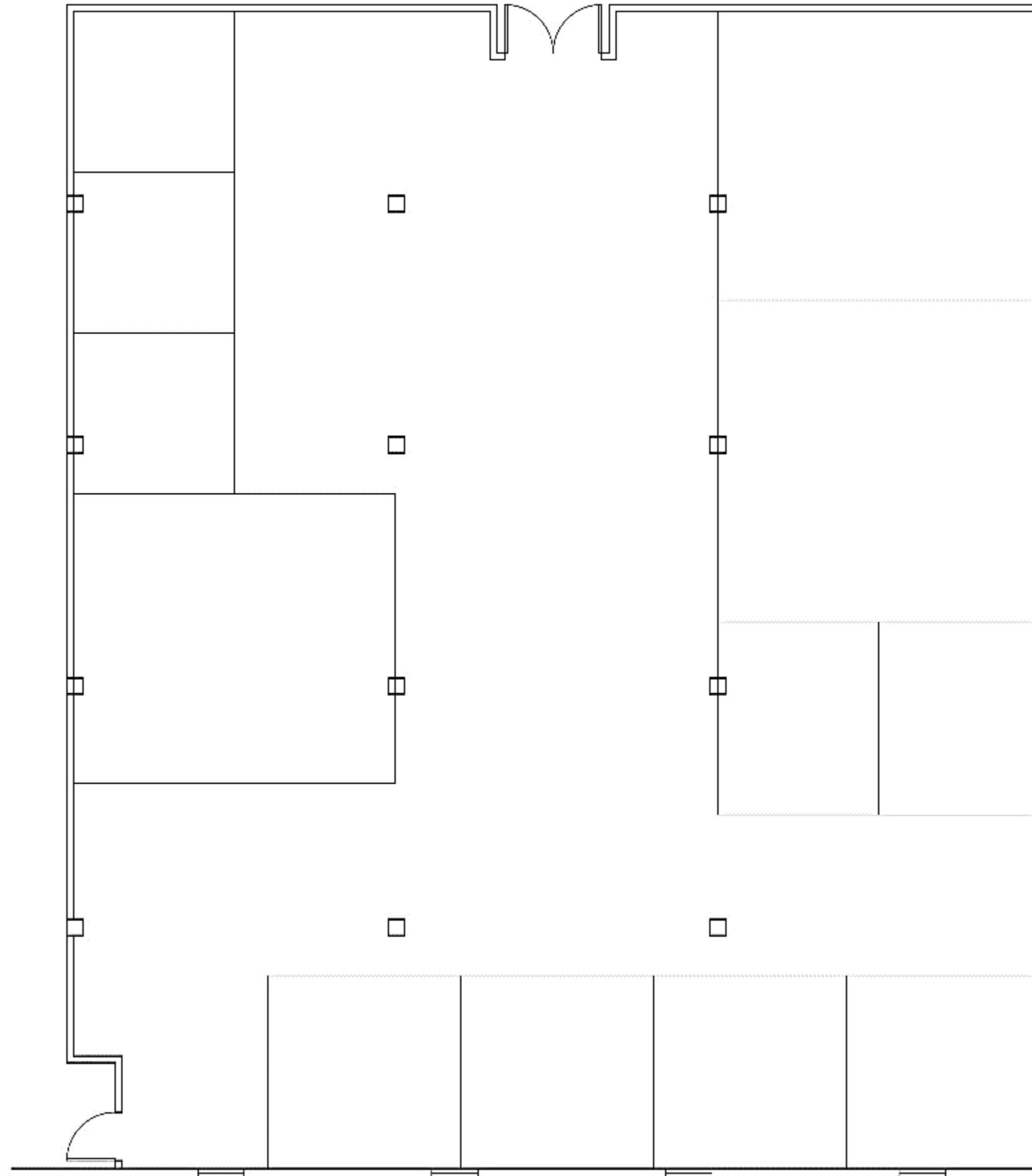
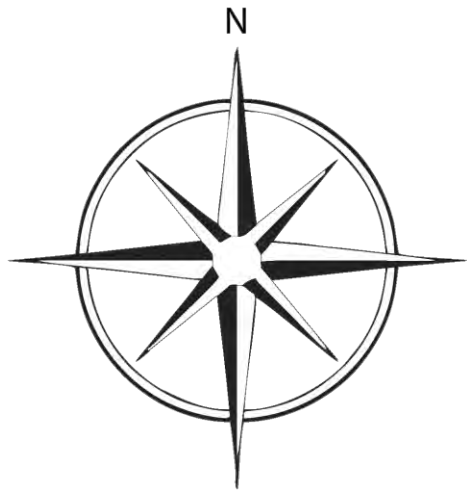
Assignment 5: Space Plan Sketches





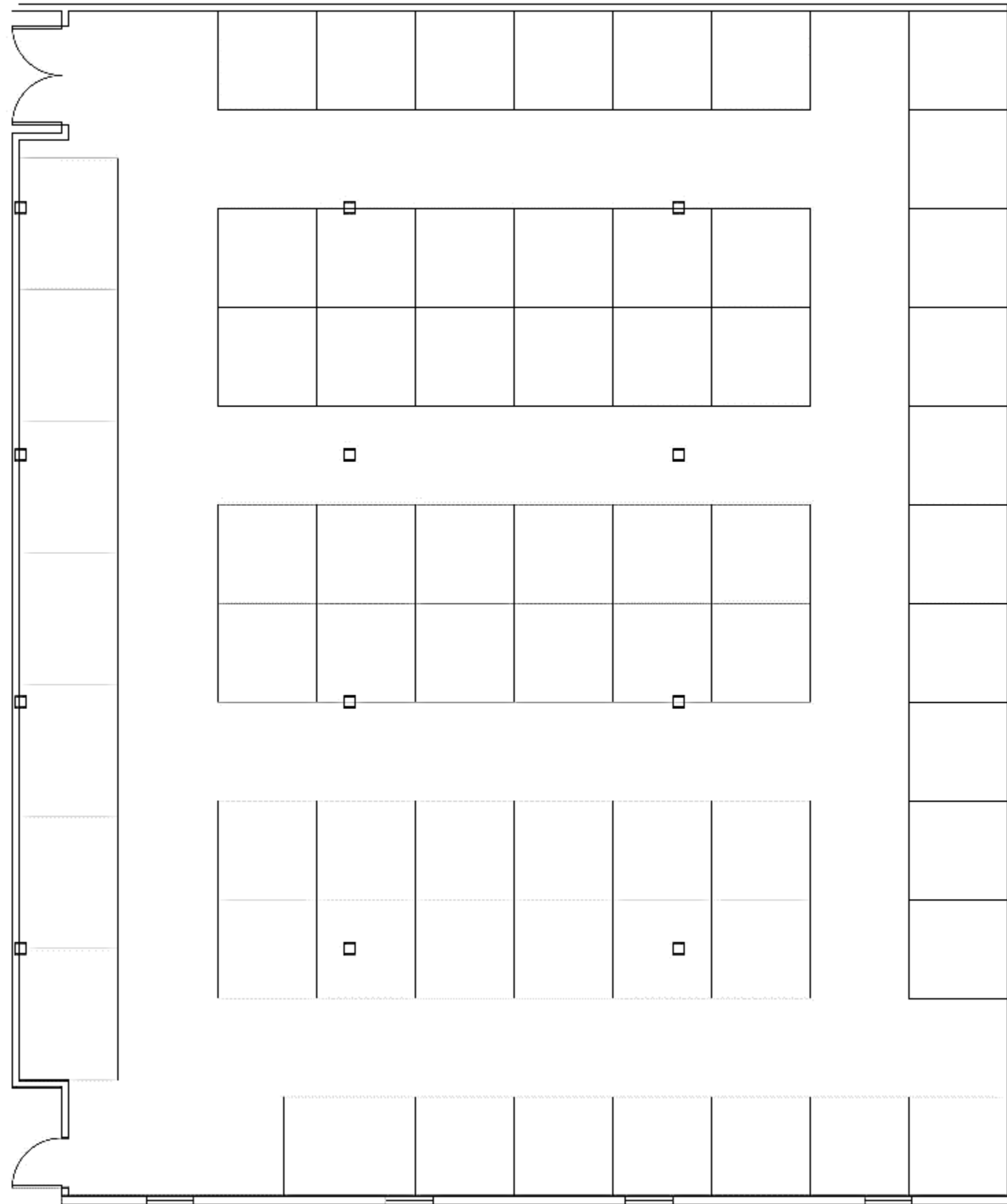
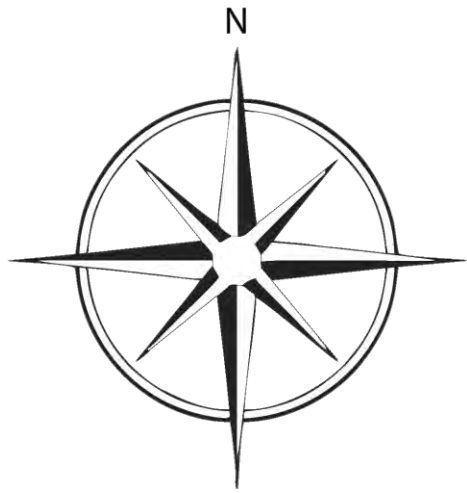
Assignment 5: Space Plan Sketches





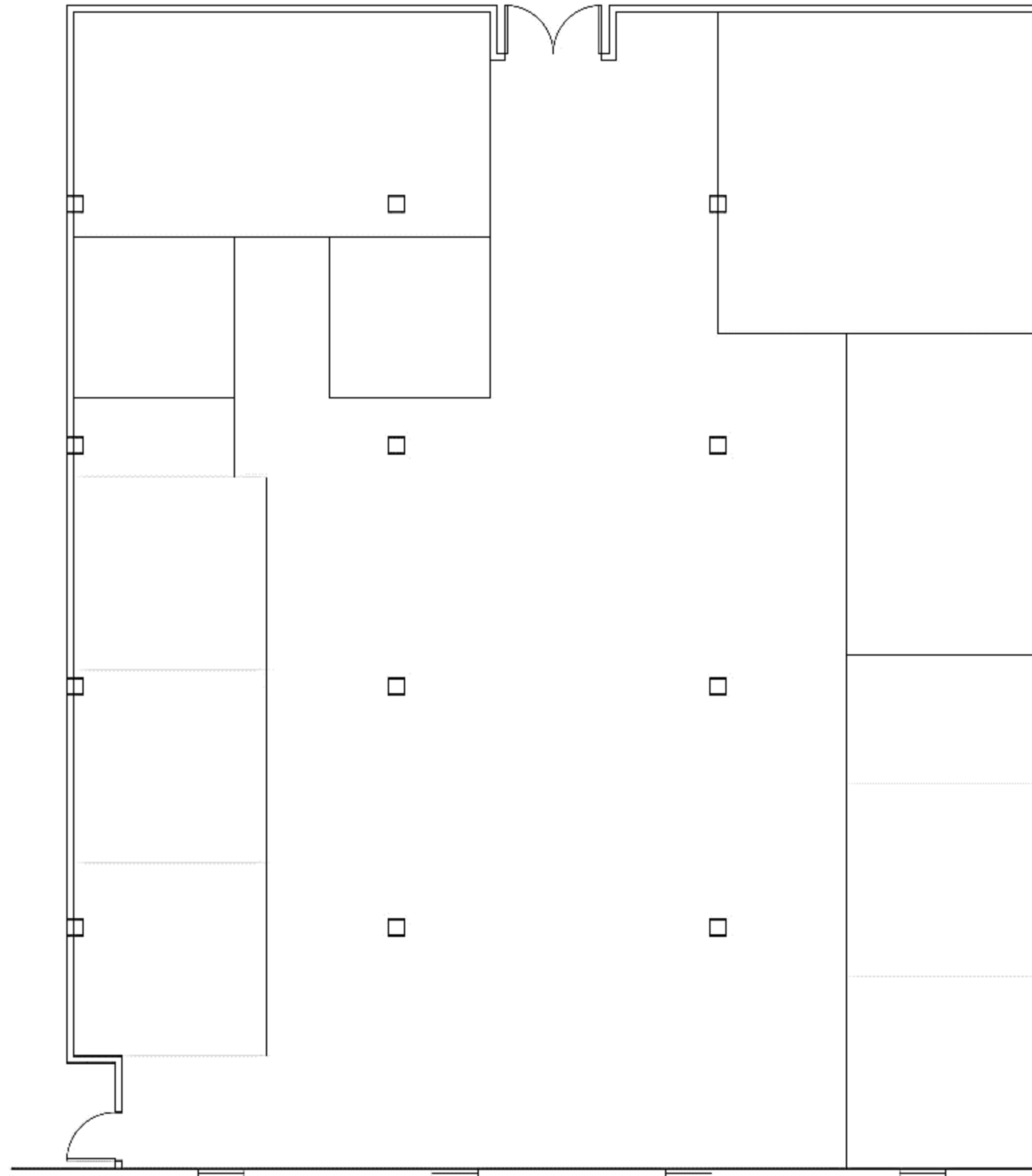
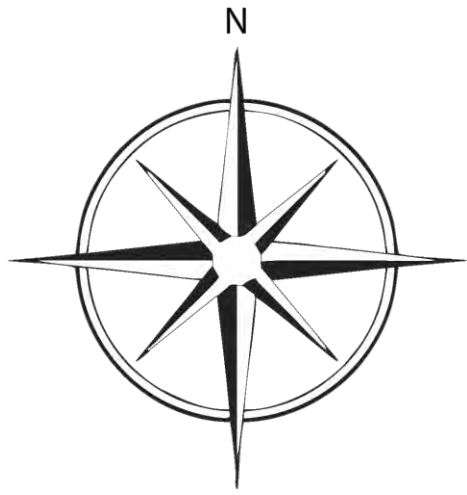
Assignment 5: Space
Plan Sketches in
AutoCAD





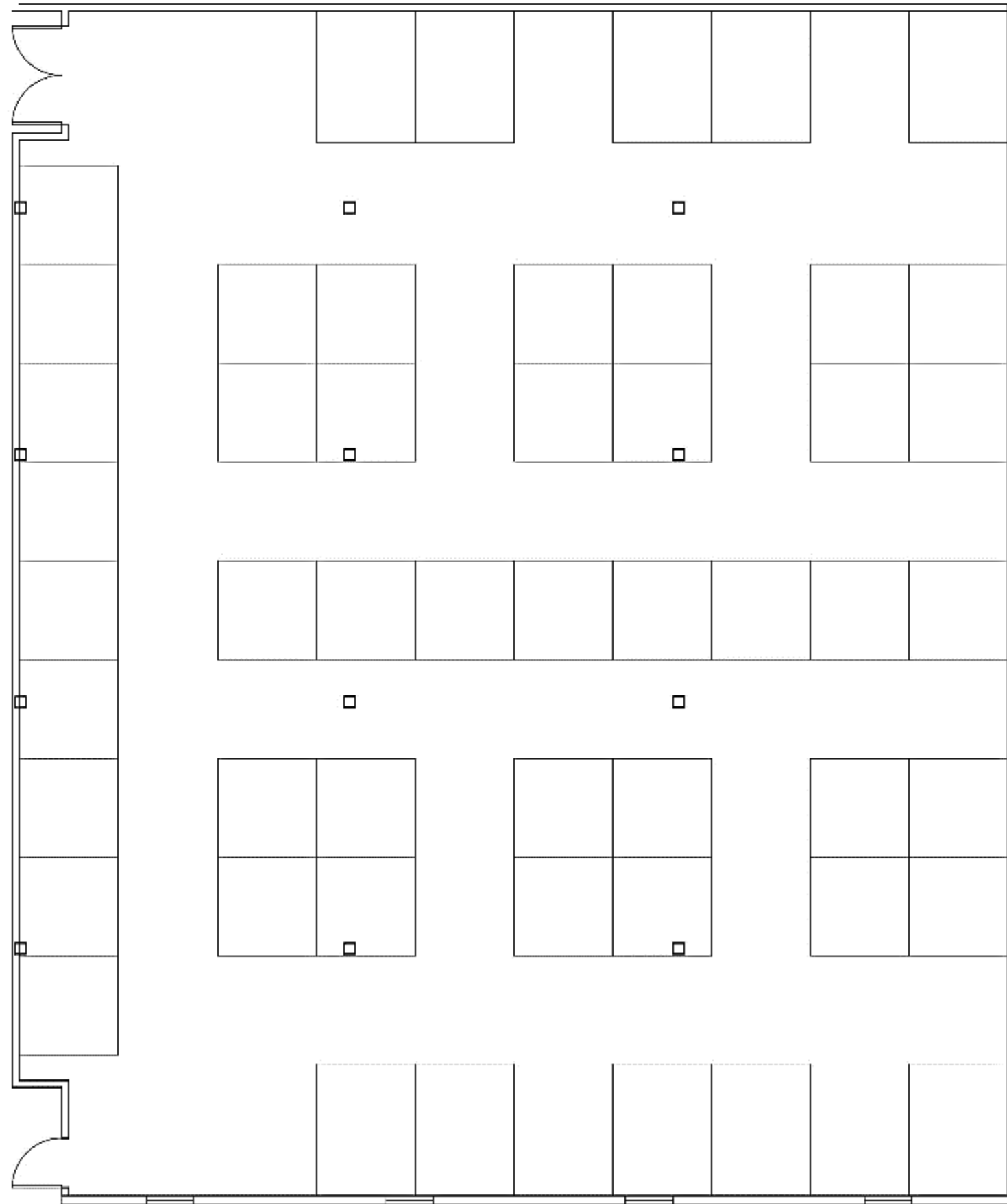
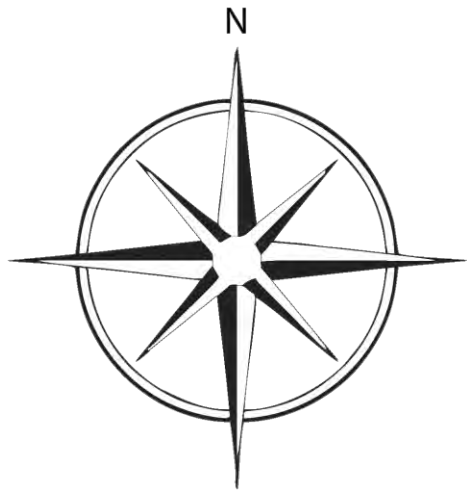
Assignment 5: Space
Plan Sketches in
AutoCAD





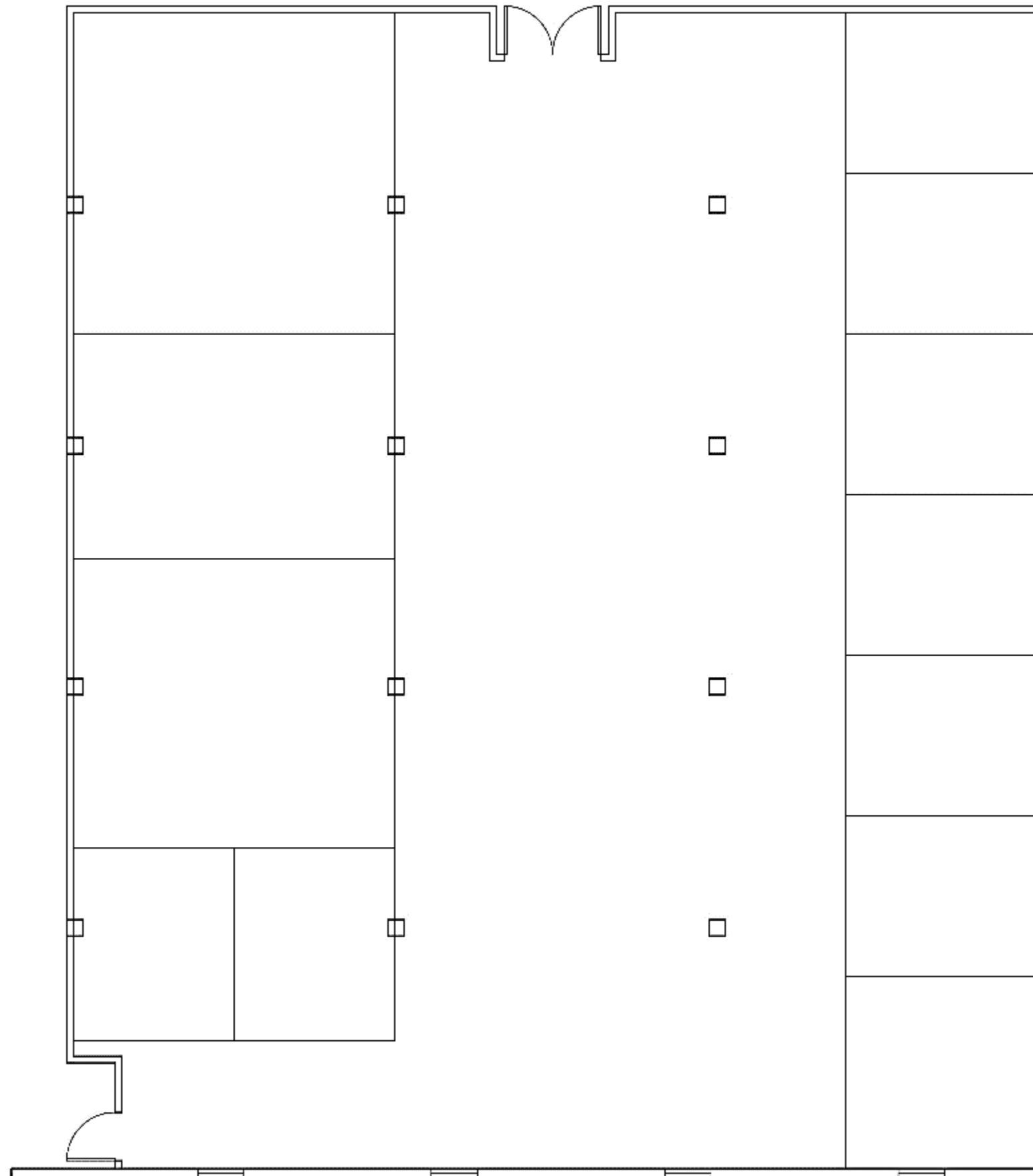
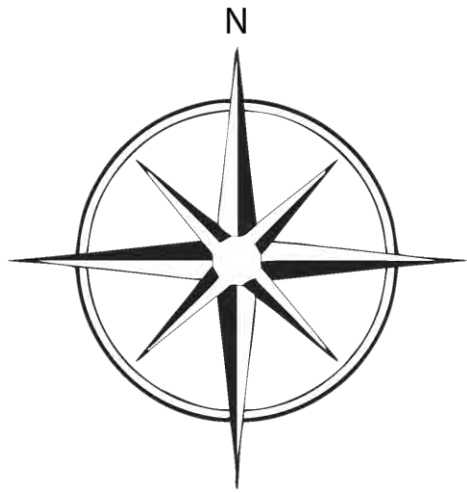
Assignment 5: Space
Plan Sketches in
AutoCAD





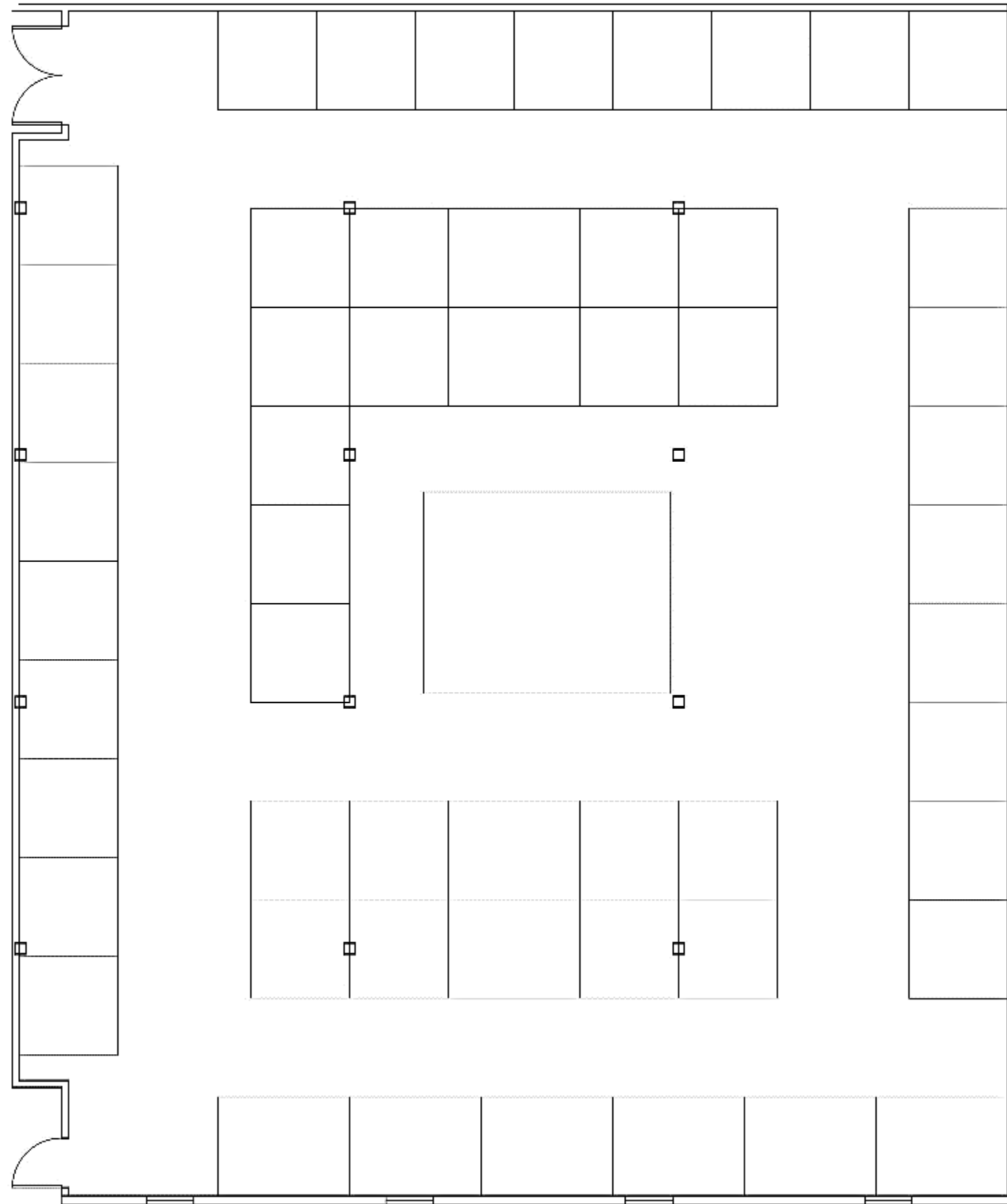
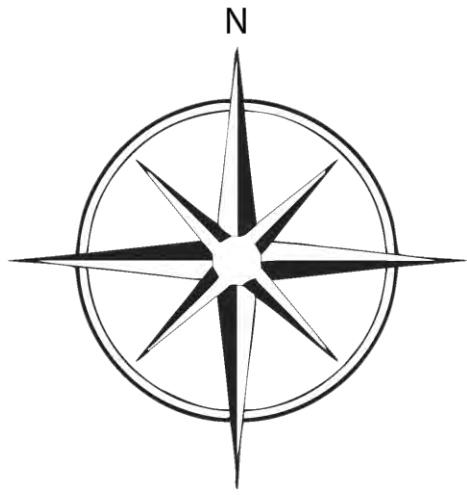
Assignment 5: Space
Plan Sketches in
AutoCAD





Assignment 5: Space
Plan Sketches in
AutoCAD

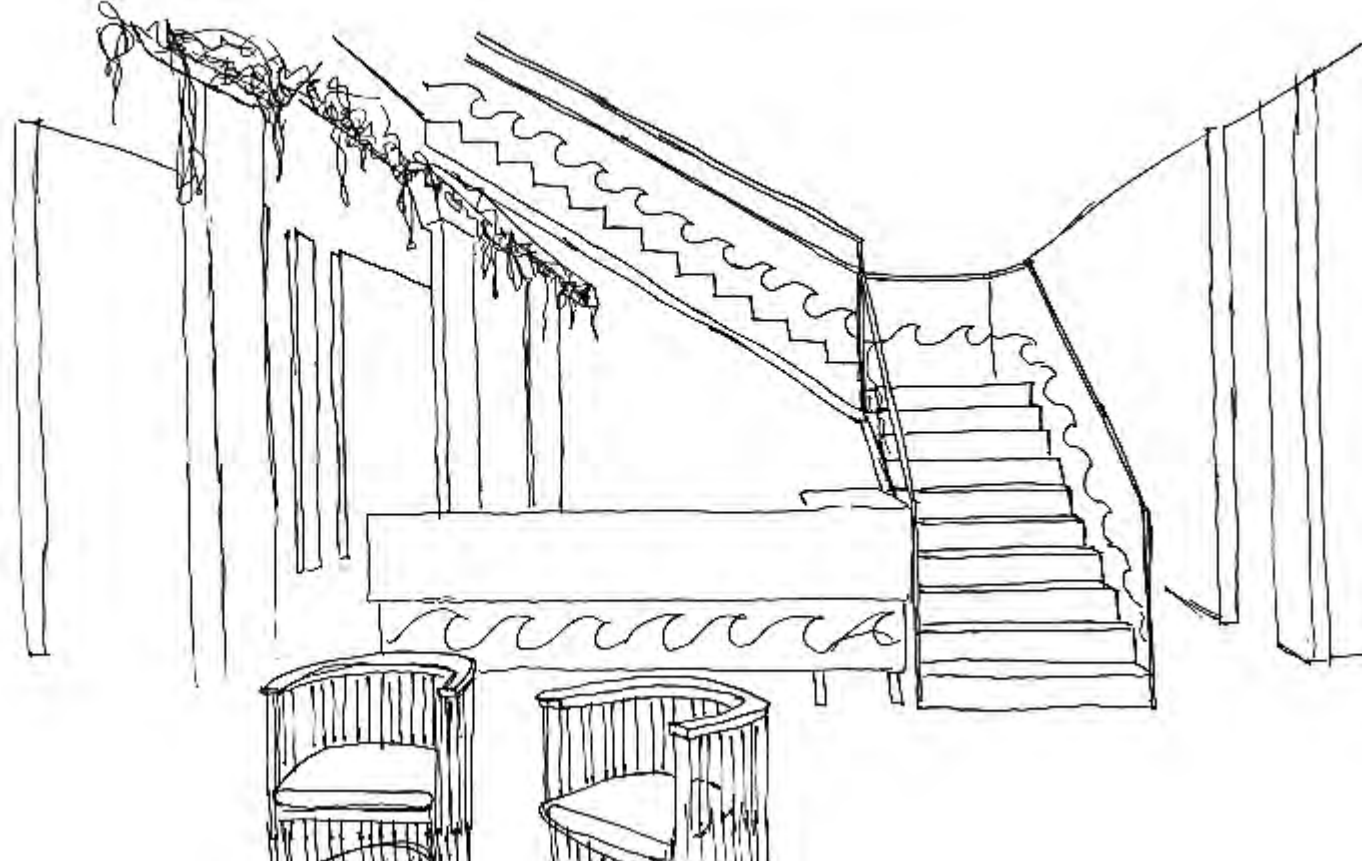




Assignment 5: Space
Plan Sketches in
AutoCAD



Preliminary Sketches



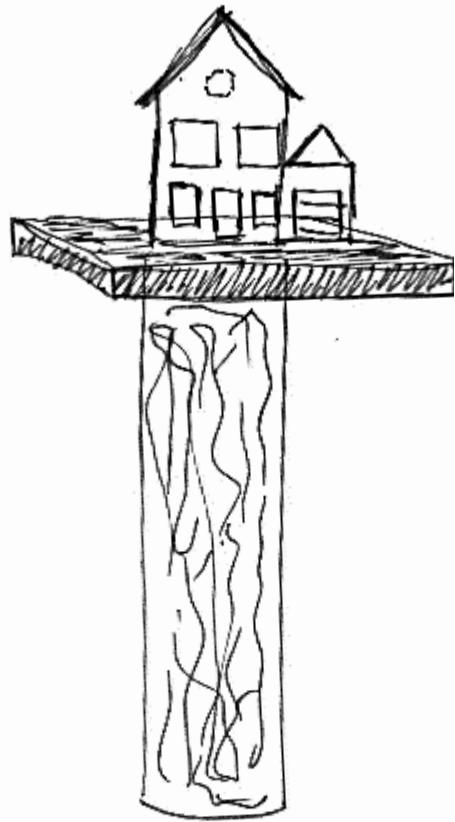
Reception Area



Pantry

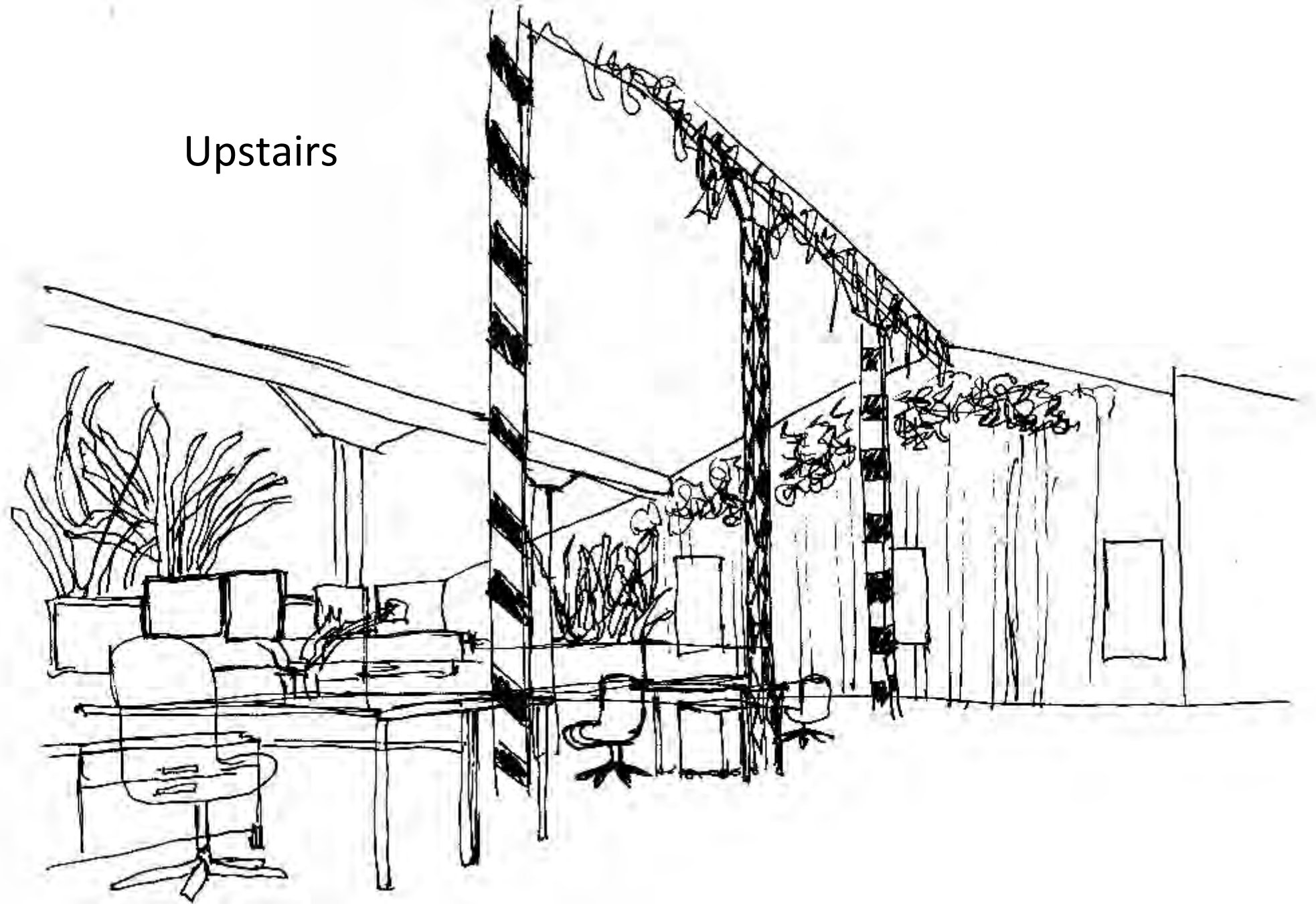


Preliminary Sketches



Exhibition Area Log Stand

Upstairs



Reception Area Perspective



Pantry Perspective

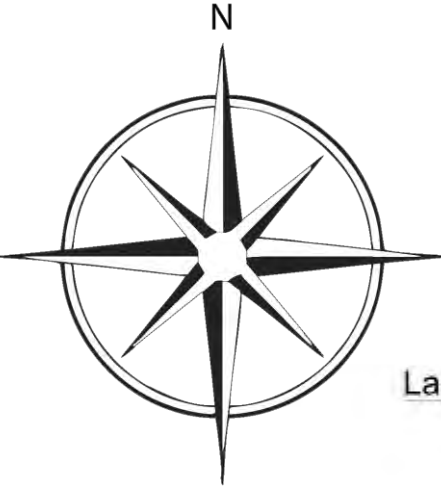


Exhibition Area Perspective



Upstairs Perspective





Large Conference Room

Pantry

Workroom

Exhibition Area

Technician

Storage
Sm. Conference Room

Downstairs Furniture Plan

Reception Area

Miscellaneous Area

Sm. Conference Room

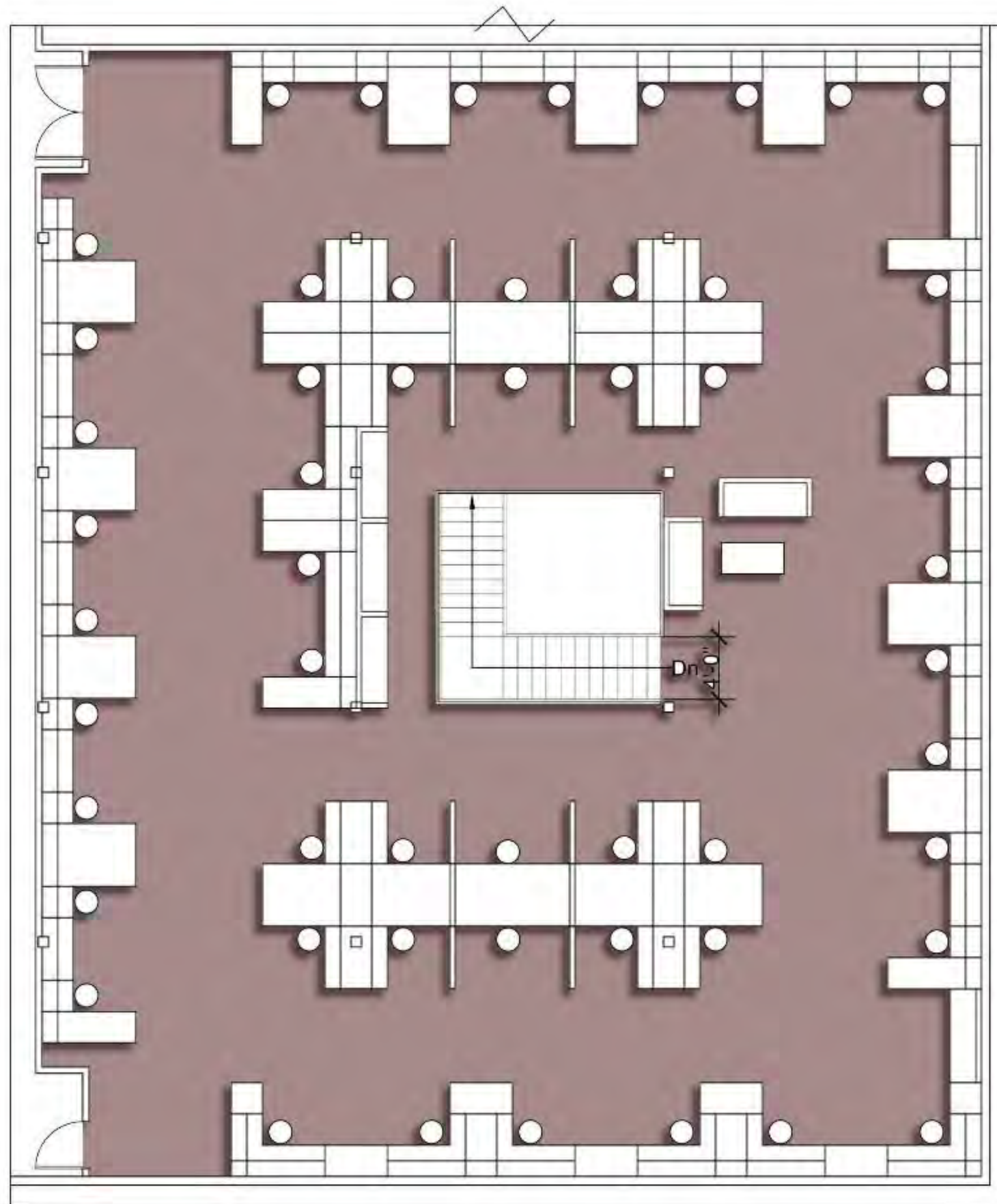
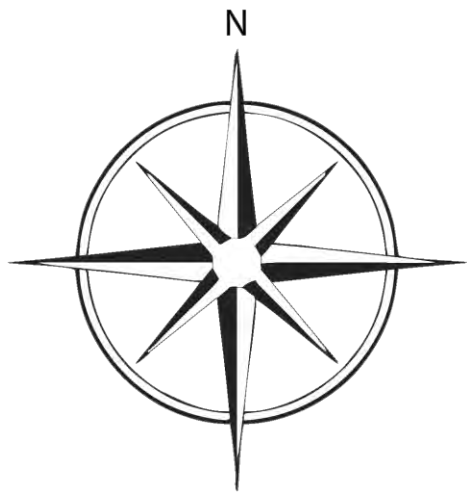
Sm. Conference Room

Admin. Assistant

Director

4'-11" 4'-0"
Up





Upstairs Furniture Plan

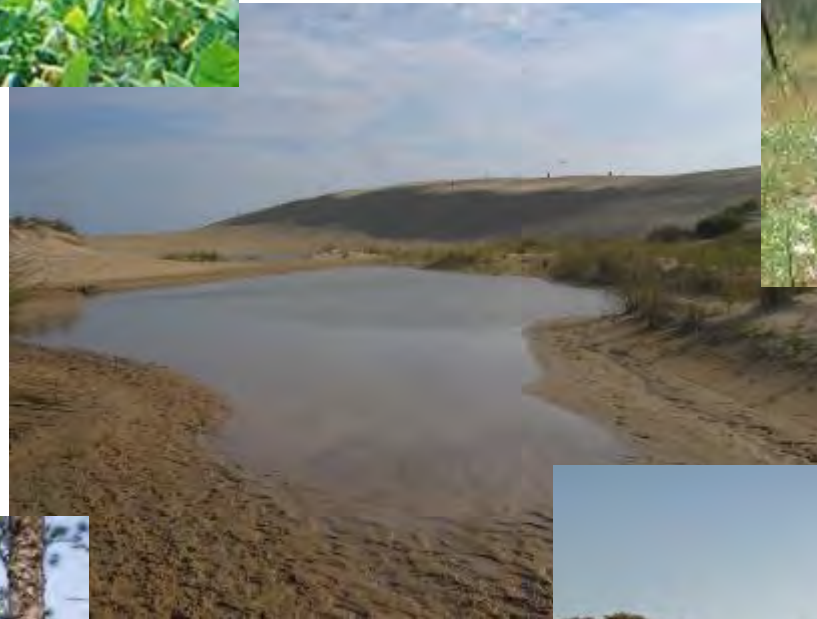


Concept Statement

- Bringing outdoor life of Coastal NC to the working environment
- Coastal NC nature incorporated into the interior of an office space
- Matching local woods and color scheme of Coastal NC's nature with modern office space needs and amenities
- This concept opens the office space



Inspirational Images



Architectural Finishes

- Knotty pine covers the walls, inspired by the traditional materials used in cottages on the Outer Banks of North Carolina.
- Sea grass used on the foot of the steps reflects the sandy dunes and sea grasses of eastern North Carolina.
- Blue waves and glass on the stairs mimic the ocean and the skies with the sandy texture of the stairs.
- The color palette of rich browns, along with sand, blues, and greens, and the textures of tree bark and sea grass bring the living environment of the area into this converted tobacco warehouse.
- The exhibition space is even more direct in its use of wood to create a lively space for exhibiting the work of the enterprise. The “tree tables” offer a whimsical way for workers to exhibit their work. The pantry/breakroom carries forth the design theme, creating a relaxing spot, in colors of sand, blues and green, for the workers to enjoy.
- The upstairs workstations feature soft blues and greens to inspire an easy working environment. The tall dark columns are reminiscent of huge oak trees in a forest. Tamed Virginia creeper is featured on the back wall up against the knotty pine.

