

Portfolio 1

IDSN 2102-001

Fall 2018

Amber Cousar, Karen Sandoval, Marisa Reins

User Profile

Who will be using this



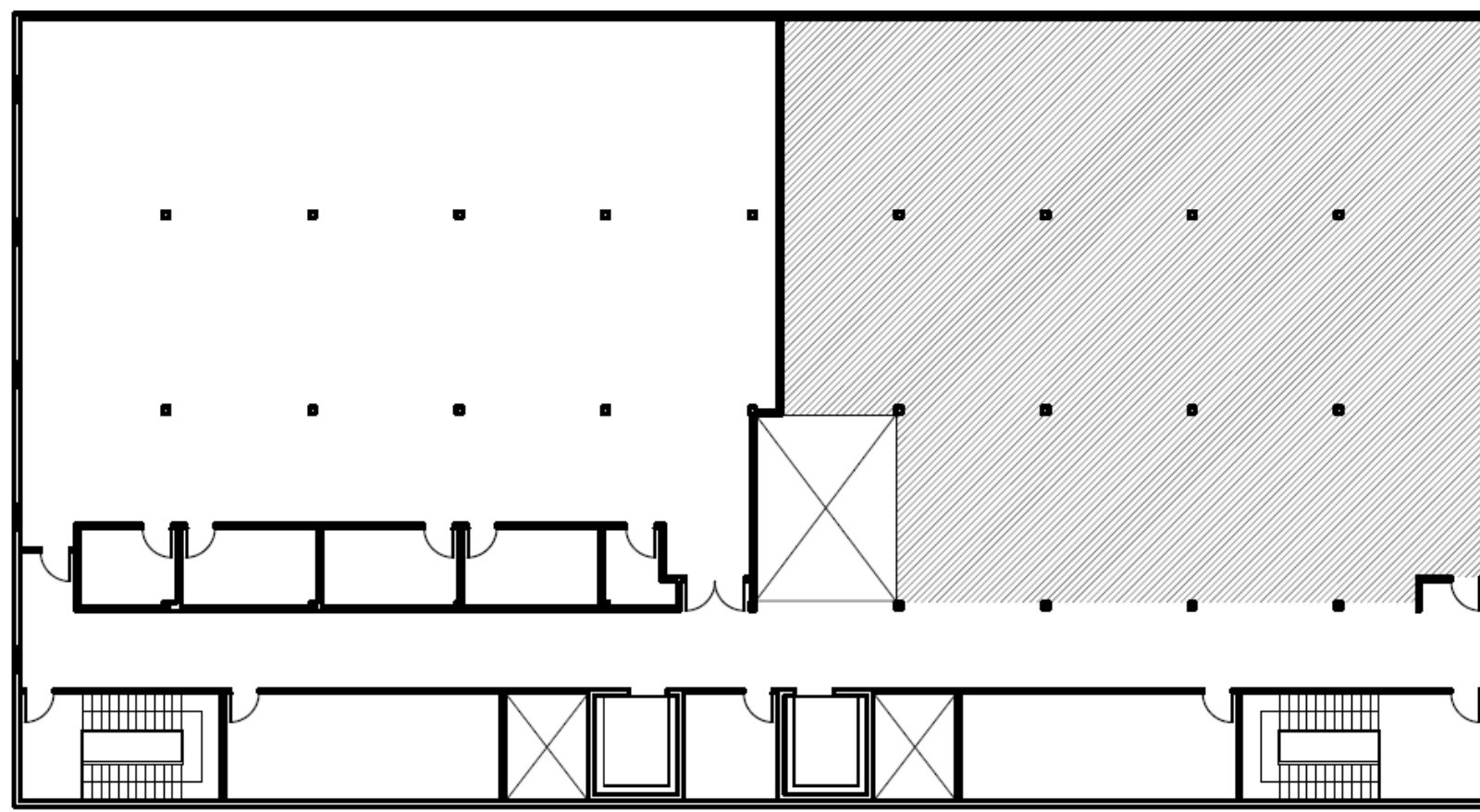
- ❖ Students and organizations of ECU
- ❖ Alumni
- ❖ Professors
- ❖ Family and friends of ECU
- ❖ Scientists
- ❖ Researchers
- ❖ Sponsors



Site Profile



- ❖ Pritchard-Hughes Tobacco Building
- ❖ Located by Pitt and 11th Street in Greenville, NC.
- ❖ Built in the early 1900 by the Hughes –Meade and Hughes Thomas Company to process and store tobacco.
- ❖ The tobacco building is one of the only earliest tobacco industry buildings that remains in Greenville, NC.
- ❖ This two-story building is 4052 sq. ft. and is made out of heavy timber construction.
- ❖ There are doors located on all sides of the building while windows are along the North, South, and East walls.
- ❖ The floors are timber and plank.
- ❖ The space that is being turned into a café or third place is the tenant space on the second floor.



Second Floor Plan

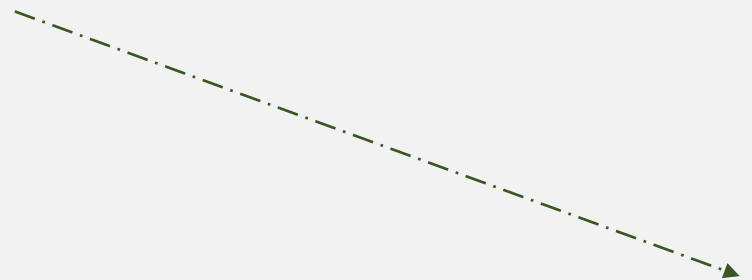
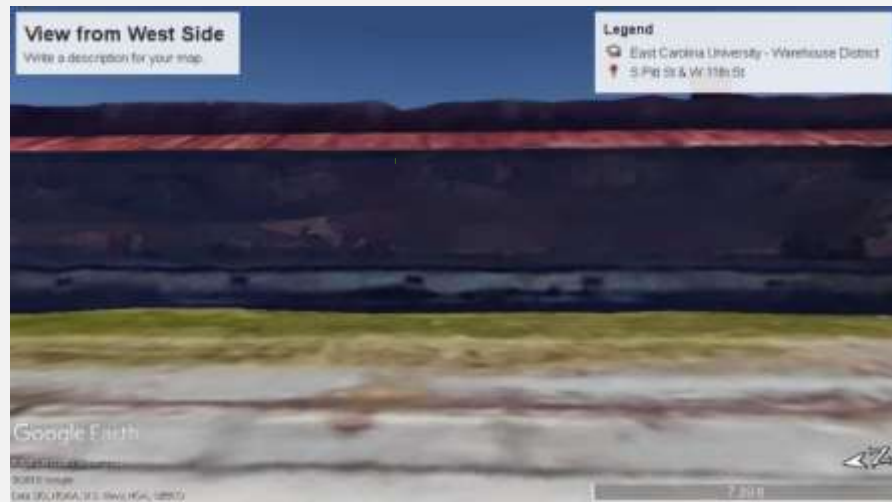


Building Exterior

Site Analysis

- ❖ Morning sun is dominant in east-facing rooms.
- ❖ Sunlight is strongest on the south wall.
- ❖ Early evening light from the west is at a low angle. Because the sun is so low in the sky, west-facing windows get direct sunlight blazing through them.
- ❖ The North side of the room has the least amount of natural light. It is also the greatest potential for heat loss through windows.





Design Problem Statement

ISSUES

- ❖ The building in the design is south-facing, so the south side gets a lot of natural light which leads to heat.
- ❖ Do to the old structure of the building do not add excessive weight.
- ❖ The building has high ceilings and heat rises.
- ❖ The bulky structural elements cannot be removed, so they need to be incorporated. (Beams and posts)
- ❖ No direction in the layout or obvious entry.
- ❖ No windows on the west side.

RESOLUTIONS

- ❖ An open design to help keep air circulating and limit the number of walls (less weight on the floor).
- ❖ Light paint colors, to help with heat and reflecting light.
- ❖ Window treatments to help with the natural light causing heat on the south side.
- ❖ Industrial furnishings to bind the old with the new.



Photo 1: South side wall with natural light.



Photo 2: Tall ceilings.



Photo 3: Structural elements that cannot be removed.