

# PORTFOLIO ONE

MARY ANN MALPAYA

CLARA REZK

PAIGE STARK

IDSN 2102-001 FALL 2018

RESEARCH + PROGRAMMING

CHARLES GUSTINA



○ WHO WILL BE USING THIS SPACE?

STUDENTS, MILLENNIALS, GEN Z, ENTREPRENEURS, GRADUATES

○ WHAT WILL IT BE USED FOR?

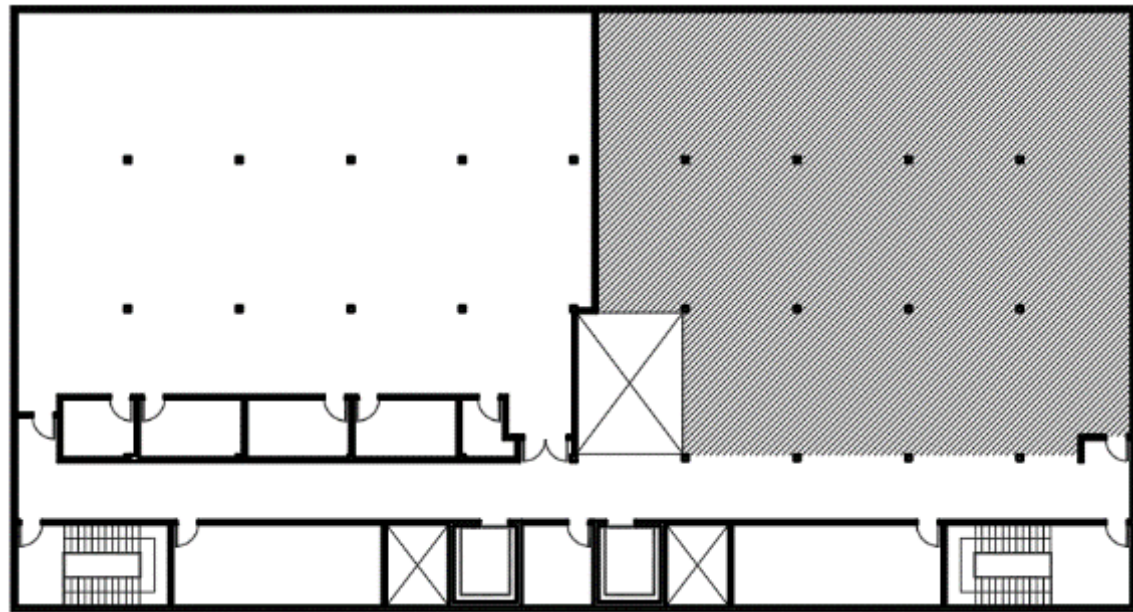
PUBLIC-PRIVATE EXTENSION OF A UNIVERSITY'S TEACHING, RESEARCH AND SERVICE MISSIONS WITH A NOD TOWARD REGIONAL ECONOMIC DEVELOPMENT.

○ WHAT IS ITS MAIN PURPOSE?

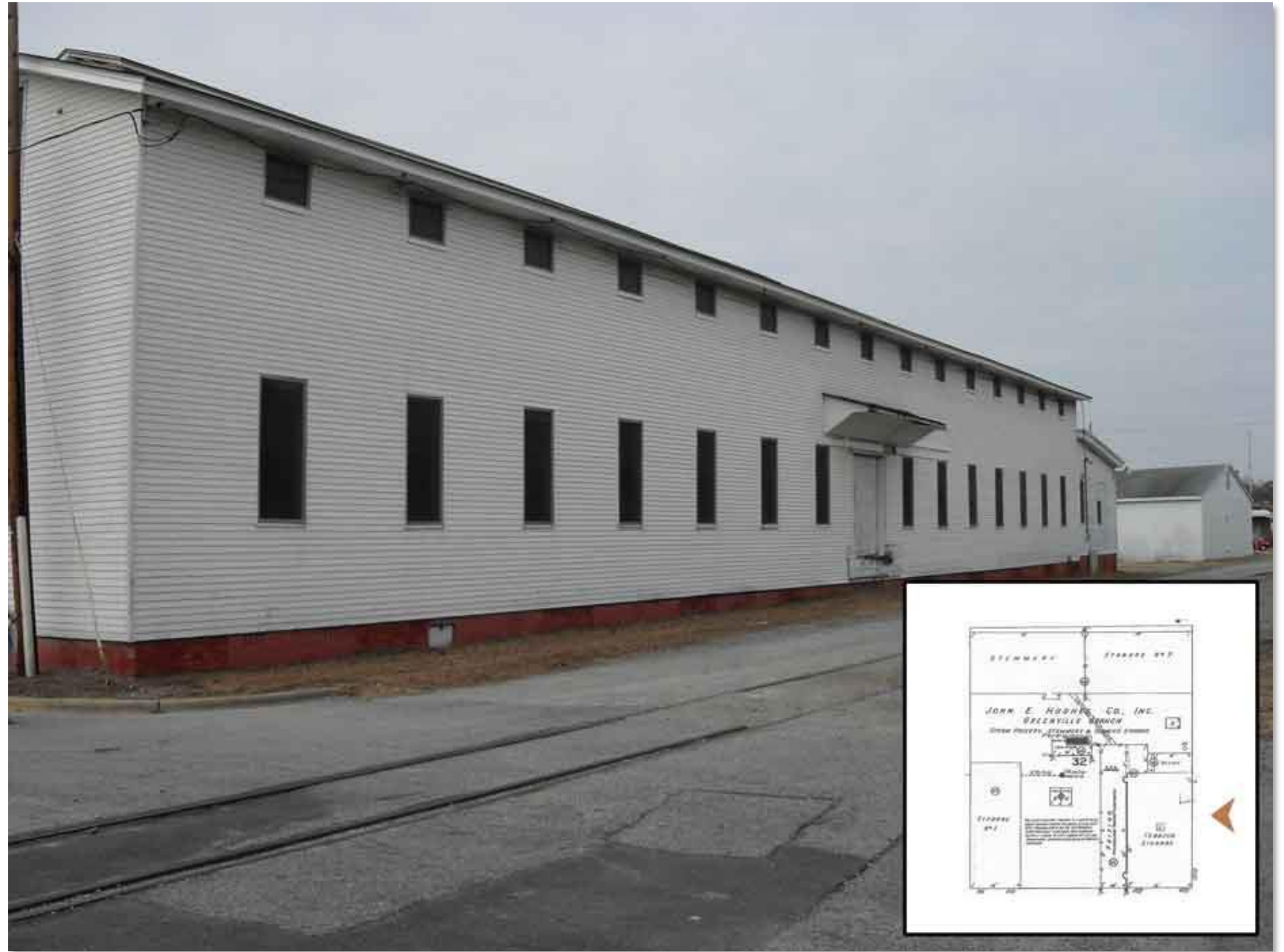
EAST CAROLINA UNIVERSITY IS POISED TO MOVE AHEAD WITH A RESEARCH CAMPUS BUILT ON PUBLIC-PRIVATE PARTNERSHIPS, IN HOPES OF BECOMING A TALENT MAGNET FOR THE STATE'S EASTERN REGION.

# USERPROFILE

- PRITCHARD-HUGHES TOBACCO BUILDING  
PITT AND 11<sup>TH</sup> STREETS  
GREENVILLE NC
- ERECTED: FIRST QUARTER OF THE  
TWENTIETH CENTURY
- HEAVY TIMBER CONSTRUCTION
- CLIENT TO OCCUPY TENANT SPACE ON  
SECOND FLOOR
- 4,052 SQUARE FEET



Second Floor Plan



Building Exterior

# SITEPROFILE



Bird's Eye View



# SITE ANALYSIS



## South Side View

- THIS SIDE IS WHERE THE MAIN WINDOWS ARE LOCATED, AND IT ALLOWS NATURE LIGHT TO ENTER.
- SOUTH SIDE IS WHERE THE STRONGEST SUNLIGHT HIT, AND IT LASTS FOR FEW HOURS.



East Side View

- THIS IS THE AREA OF THE BUILDING THAT THE NATURAL LIGHT HIT DURING SUNRISES.
- IT HAS ENOUGH SUNLIGHT DURING THE DAY AND IT KEEPS IT WARM DURING WINTER.
- THIS IS WHERE THE SUN LIGHT IS DOMINANT.



THE HISTORIC HUGHES TOBACCO WAREHOUSE IS IN NEED OF RESTORATION AND PRESERVATION IN ORDER TO BE USED AS A CAFE FOR FUTURE EAST CAROLINA UNIVERSITY'S MILLENNIAL CAMPUS

## CURRENT ISSUES

- NATURAL LIGHTING IS LIMITED
- DIFFICULTY IN ACCESS TO 2ND FLOOR
- AGE OF BUILDING
- HIGH CEILINGS
- WEAK FLOORING
- POOR AIR CIRCULATION
- OVERWHELMING SPACE
- NOT THE BEST LOCATION



# PROBLEM STATEMENT

[HTTPS://WWW.STREETDIRECTORY.COM/TRAVEL\\_GUIDE/34037/HOBBIES/HISTORY\\_OF\\_ROYAL\\_CHAIRS.  
HTML](https://www.streetdirectory.com/travel_guide/34037/hobbies/history_of_royal_chairs.html)

[HTTPS://COURSES.CIT.CORNELL.EDU/DEA150/FILES/2011%20FILES/PROJECT%202.PDF](https://courses.cit.cornell.edu/dea150/files/2011%20files/project%202.pdf)

[HTTPS://WWW.THEEPOCHTIMES.COM/AN-ODE-TO-THE-HISTORY-OF-A-COFFEE-HOUSE-IN-18-  
PICTURES\\_1964556.HTML](https://www.theepochtimes.com/an-ode-to-the-history-of-a-coffee-house-in-18-pictures_1964556.html)

[HTTPS://DRIFTAWAY.COFFEE/THE-HISTORY-OF-COFFEE-HOUSES/](https://driftaway.coffee/the-history-of-coffee-houses/)

[HTTP://WWW.NCAUSA.ORG/ABOUT-COFFEE/HISTORY-OF-COFFEE](http://www.ncausa.org/about-coffee/history-of-coffee)

[HTTPS://WWW.GOCOFFEE.GO.COM/PROFESSOR\\_PEABERRY/HISTORY\\_OF\\_COFFEE/1900](https://www.gocoffee.go.com/professor_peaberry/history_of_coffee/1900)

**WORKS**CITED