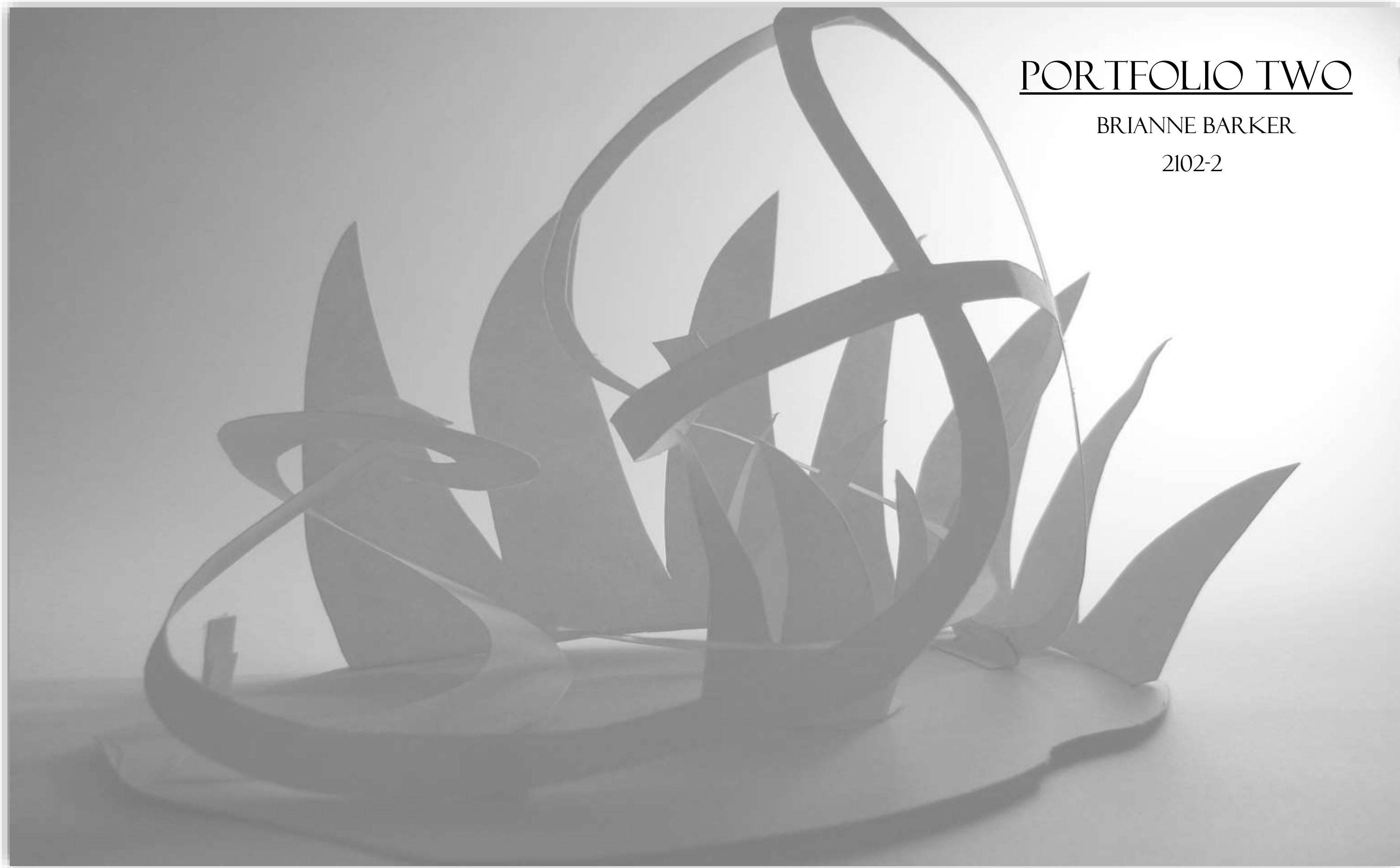
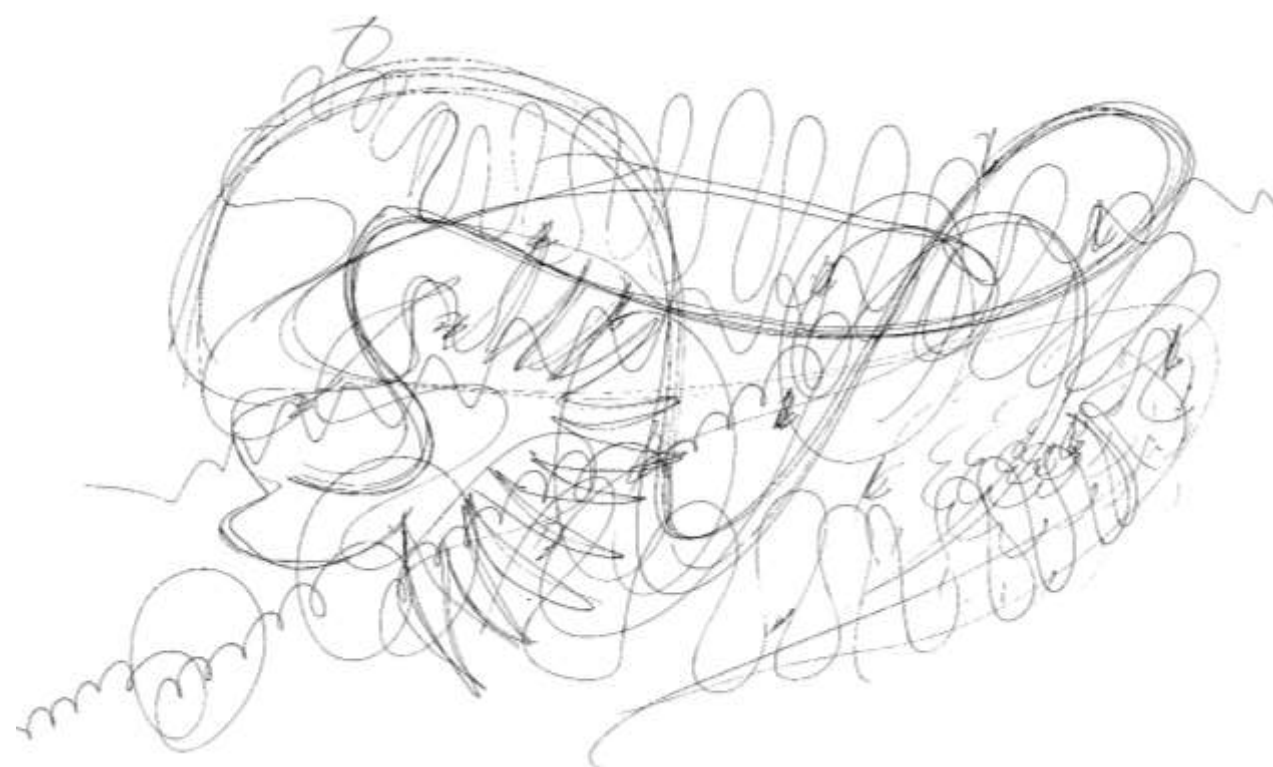
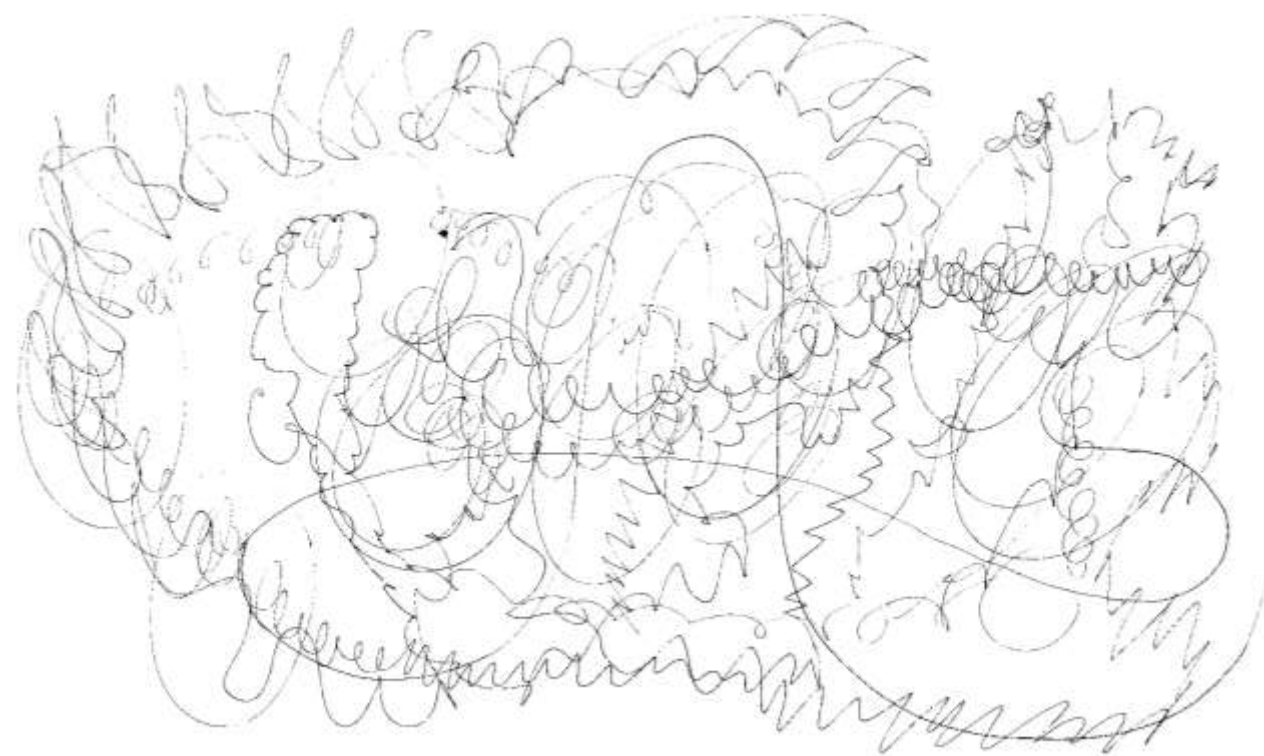


PORTFOLIO TWO

BRIANNE BARKER

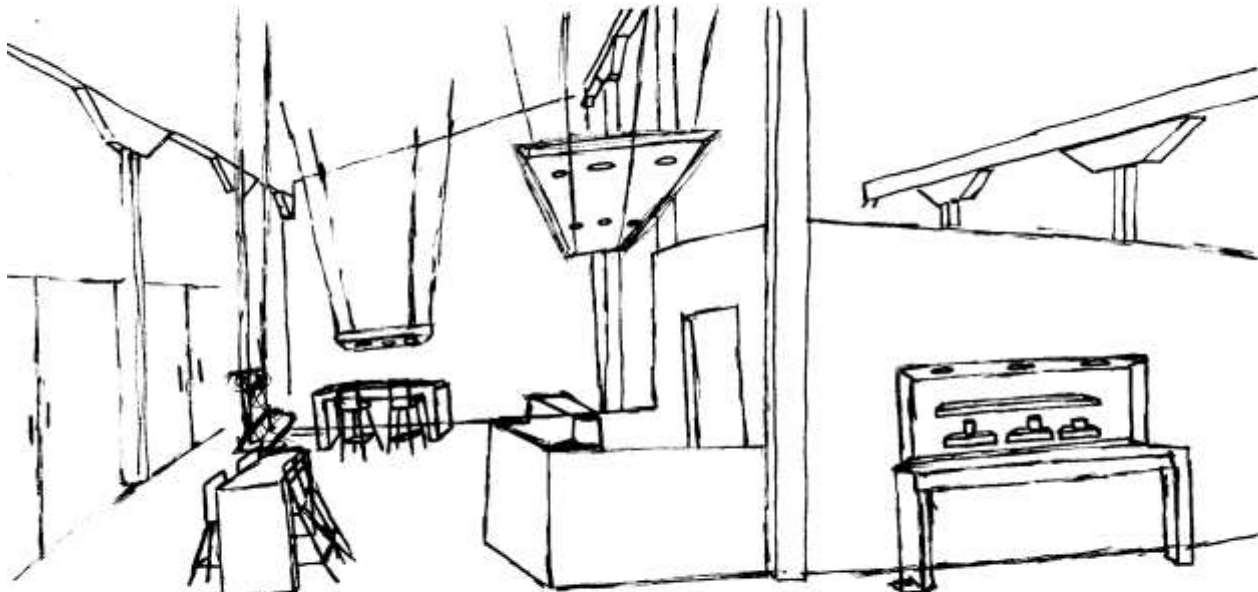
2102-2





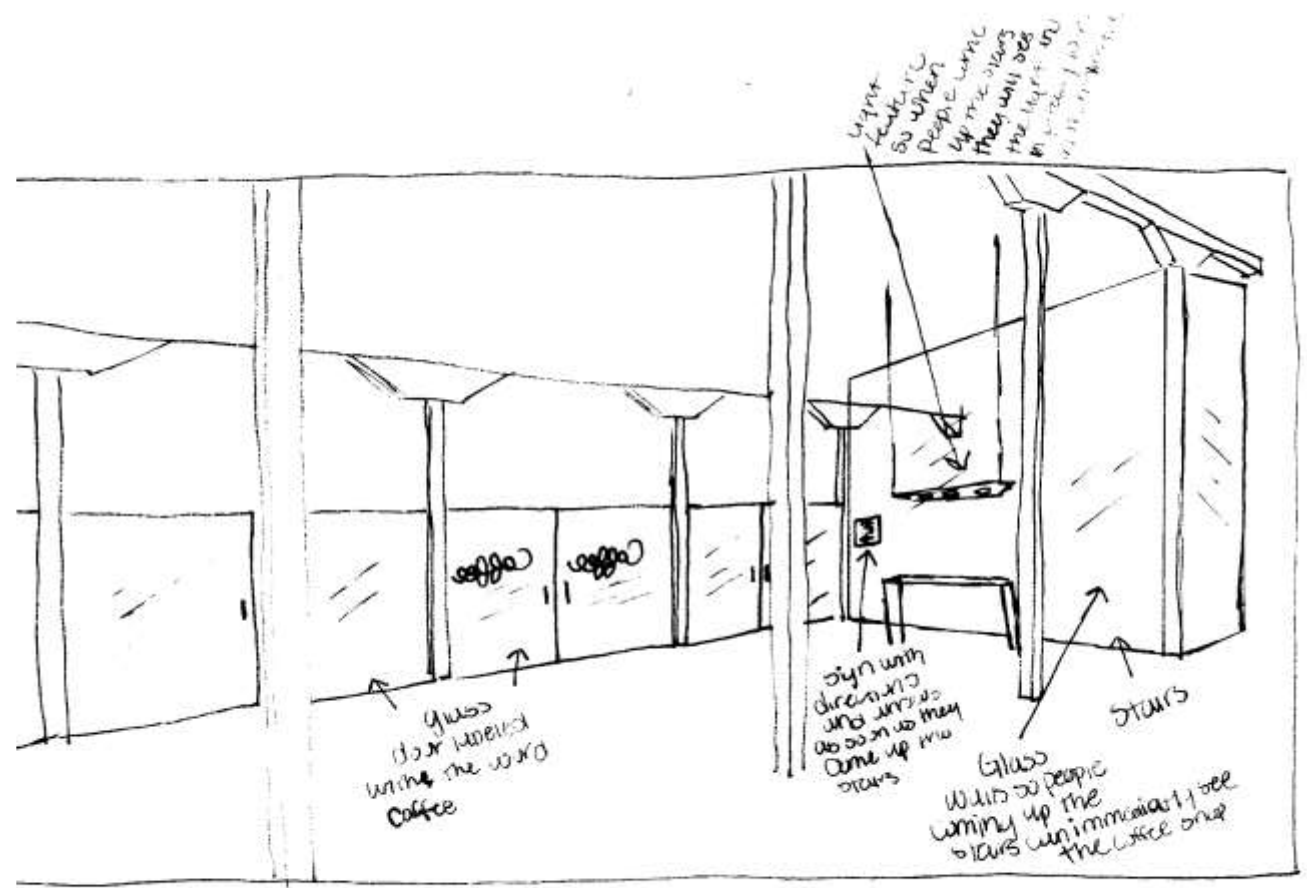
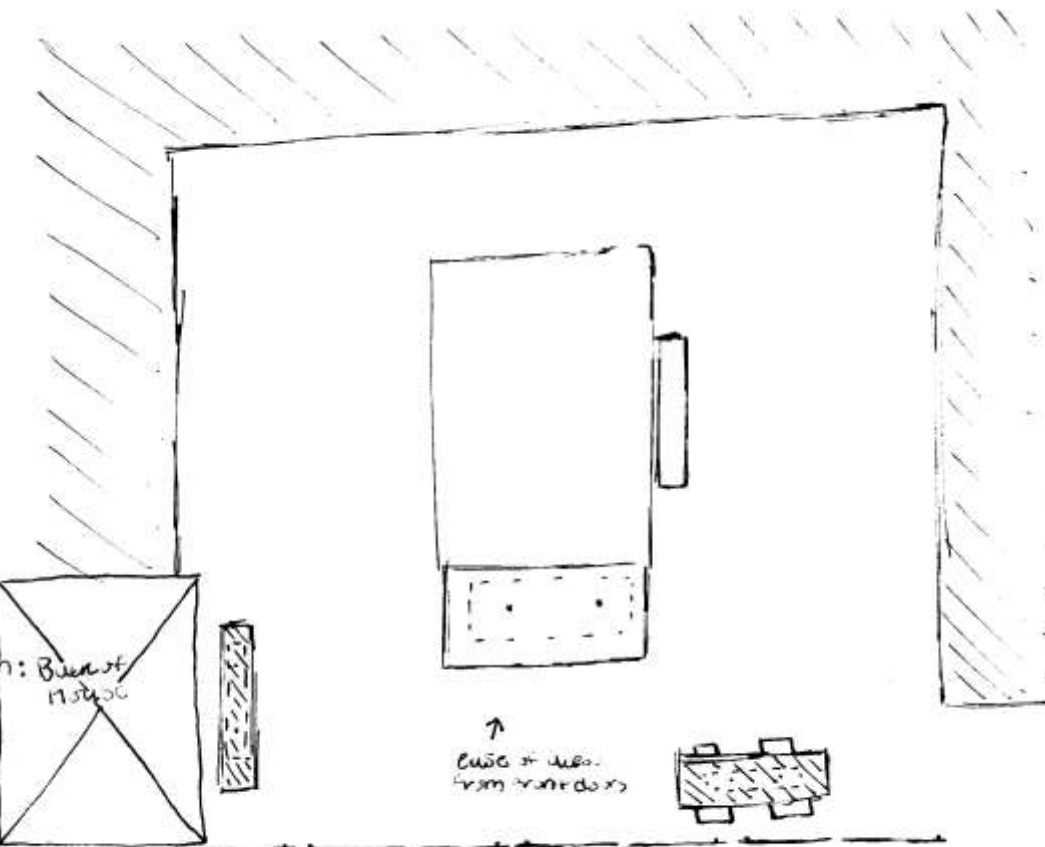


Problem: Back of House



- Shows back of house in the space
- Shows how without the access to the counter is
- Drop ceiling with lights to create a more intimate space while working

Back of House



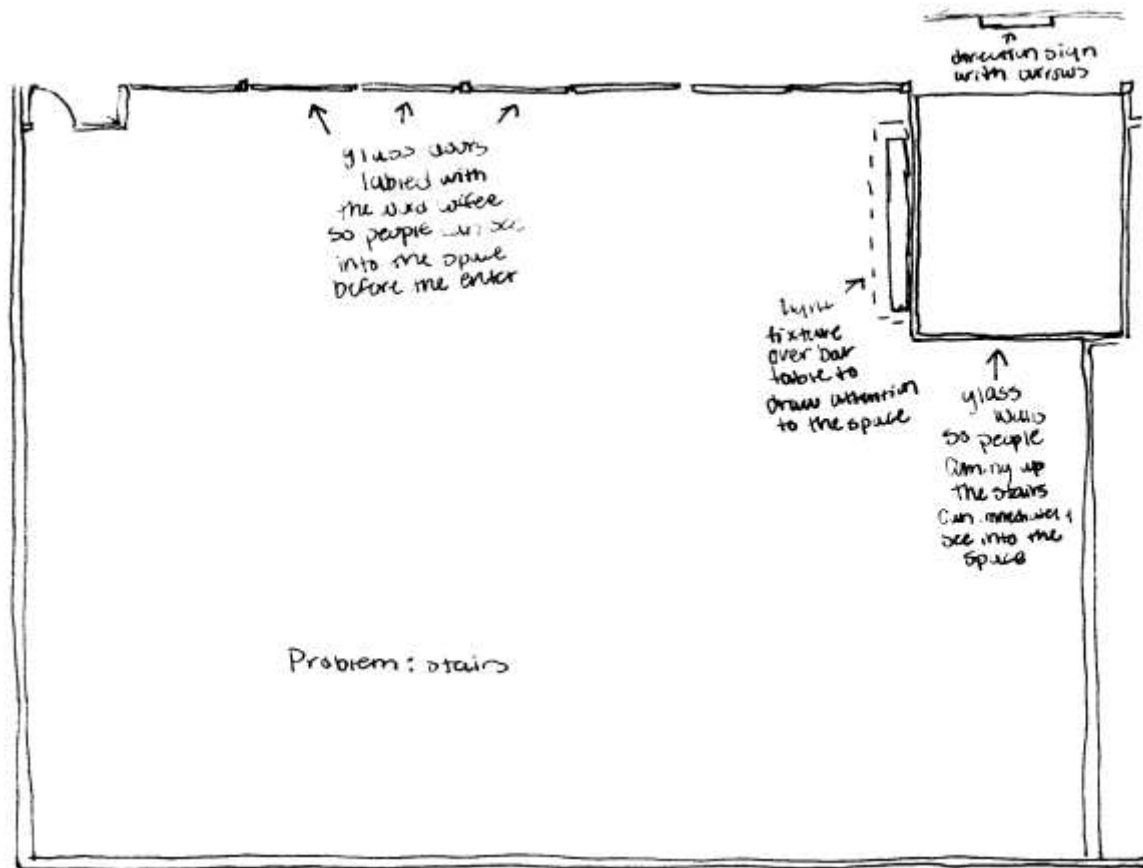
Light fixture so when people walk up the stairs they will see the light in the space

glass door labeled with the word Coffee

sign with directions and arrows so so on so they come up the stairs

Glass walls so people coming up the stairs can immediately see the coffee shop

Problem: stairs



glass walls labeled with the word coffee so people can see into the space before they enter

light fixture over bar table to draw attention to the space

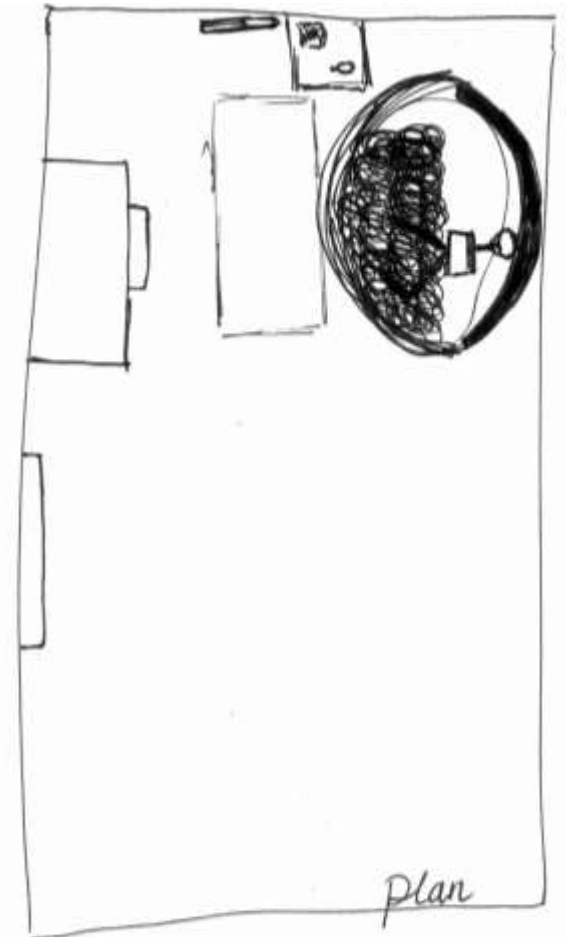
glass walls so people coming up the stairs can immediately see into the space

Problem: stairs

Stairs



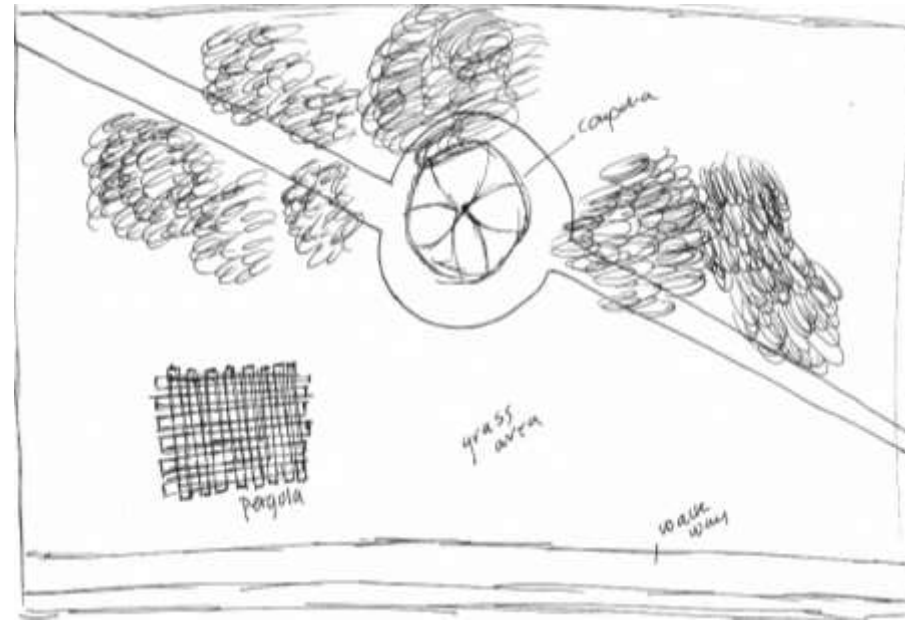
Work, Diffuse, Focus



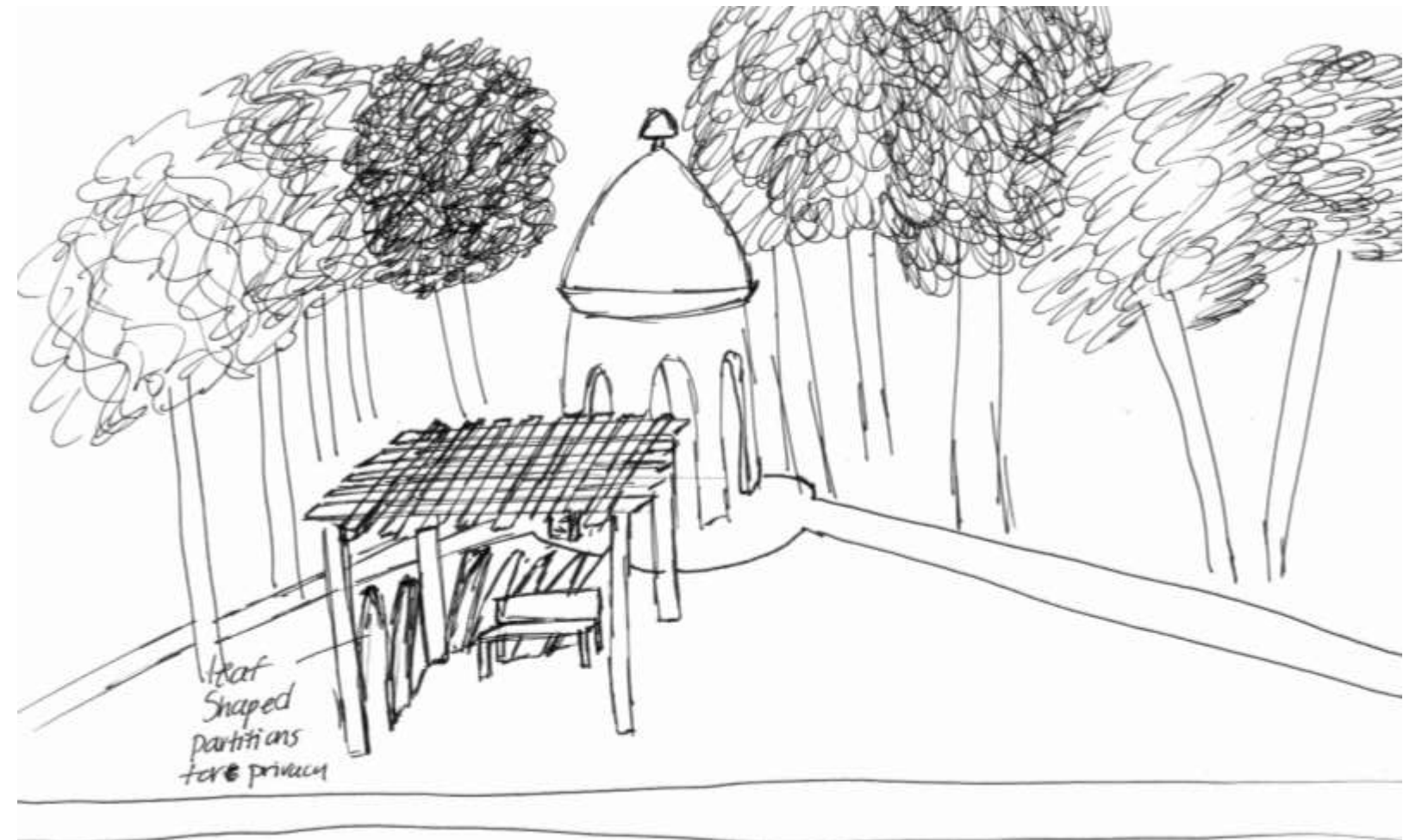
Daydreaming

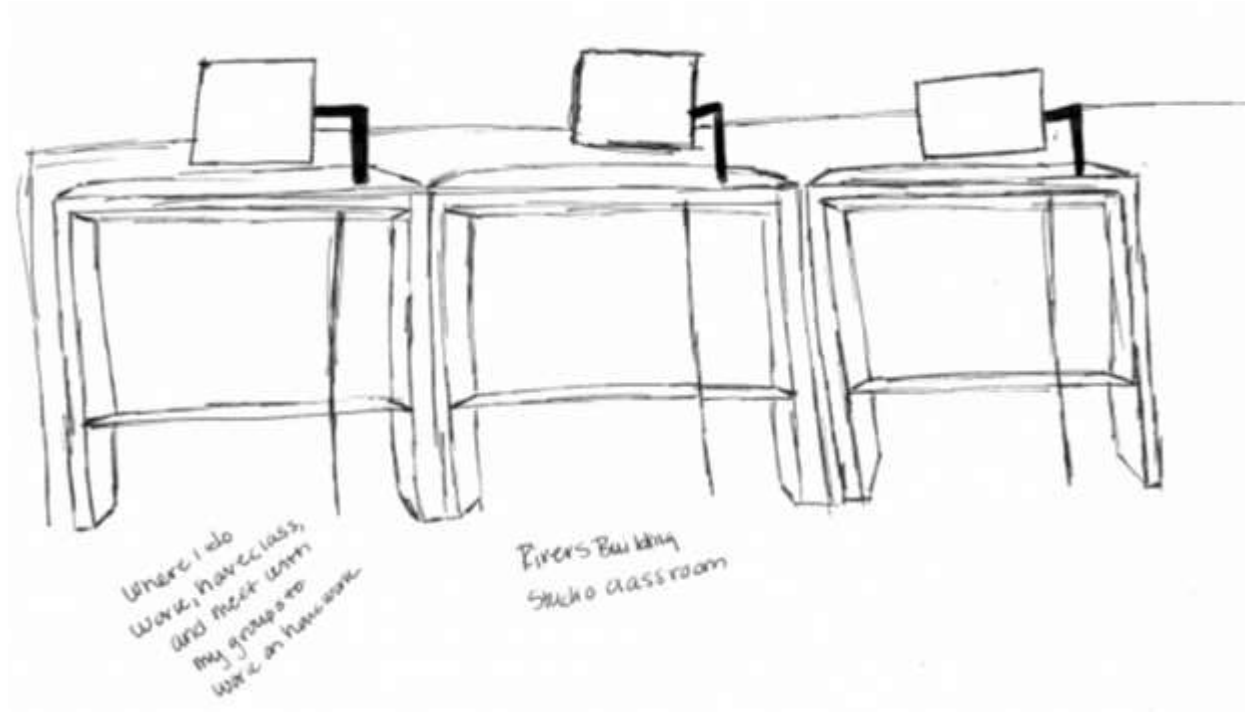


I bike along this path everyday multiple times a day to and from class



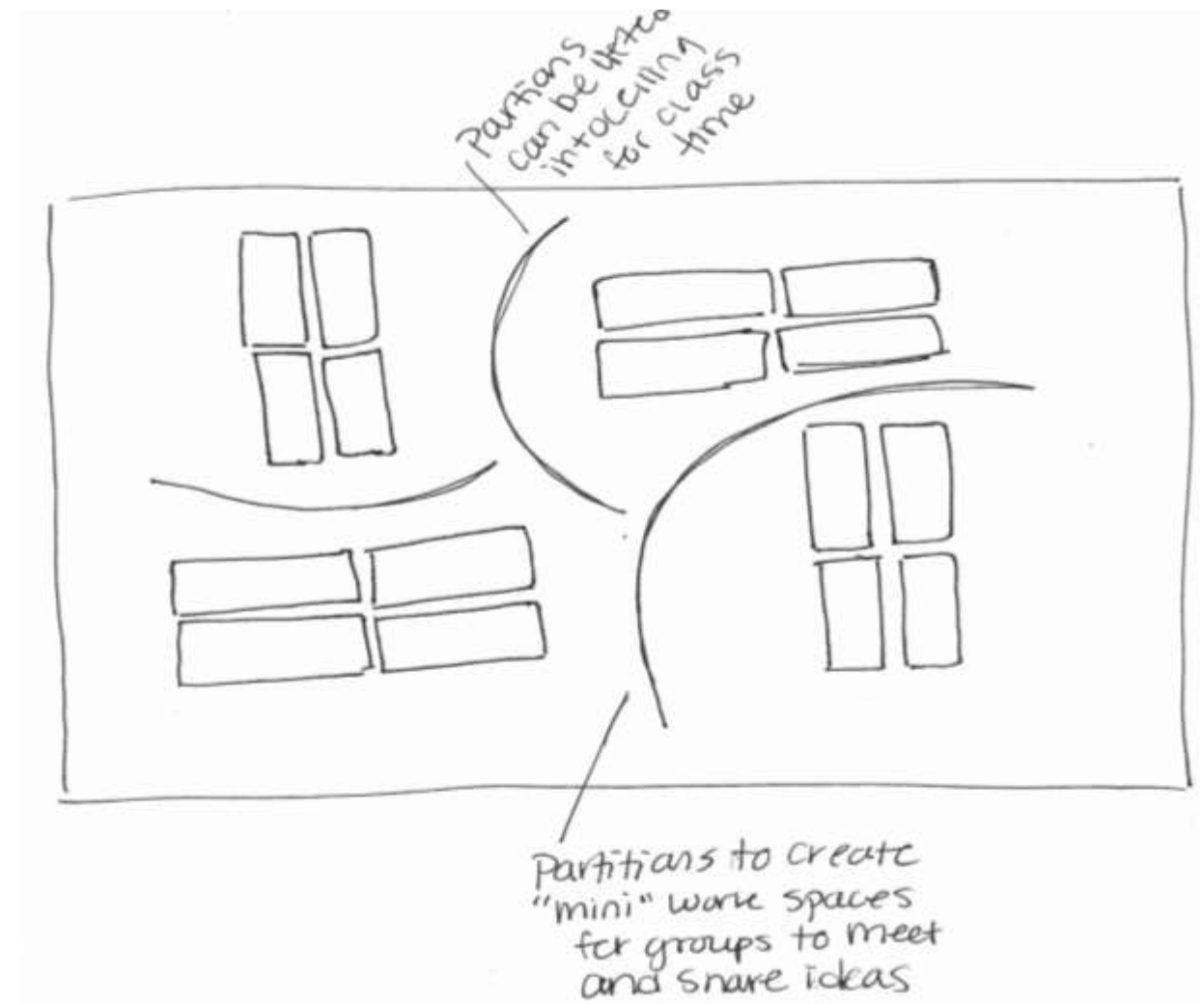
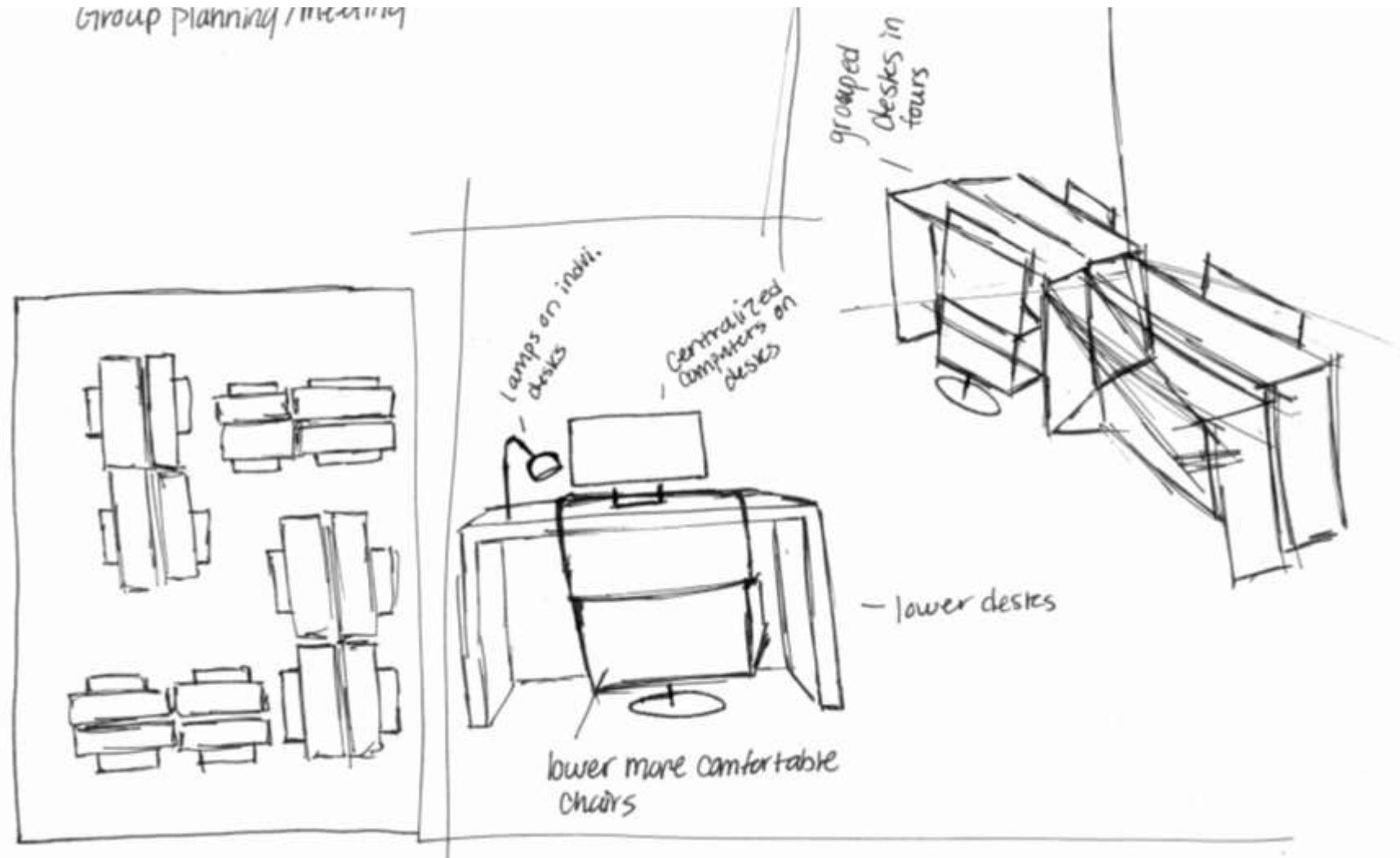
Activity Sketch -
Daydreaming

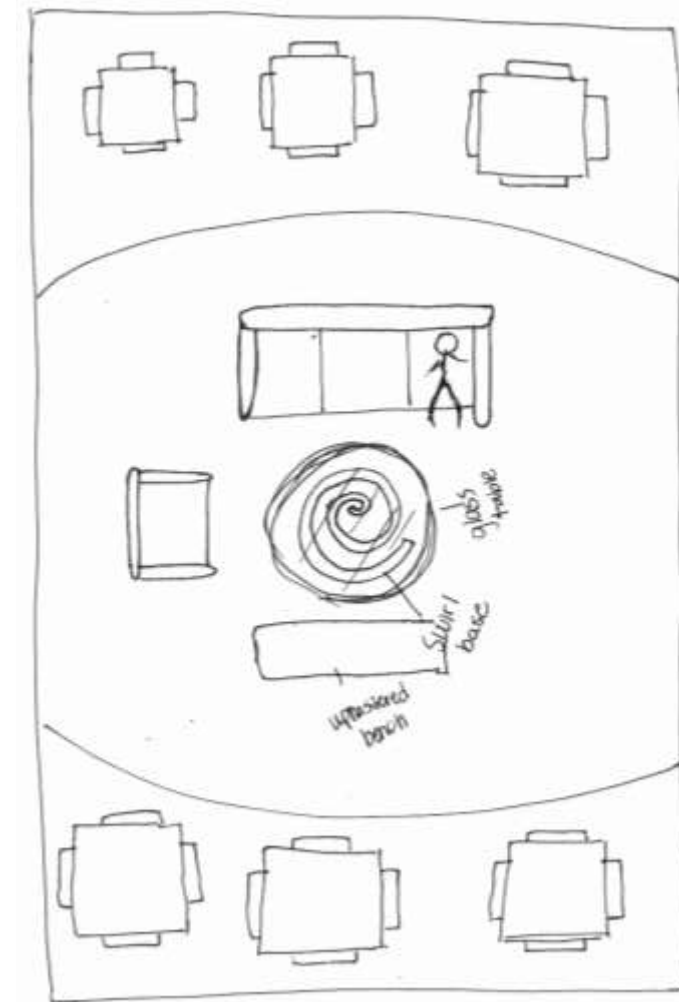




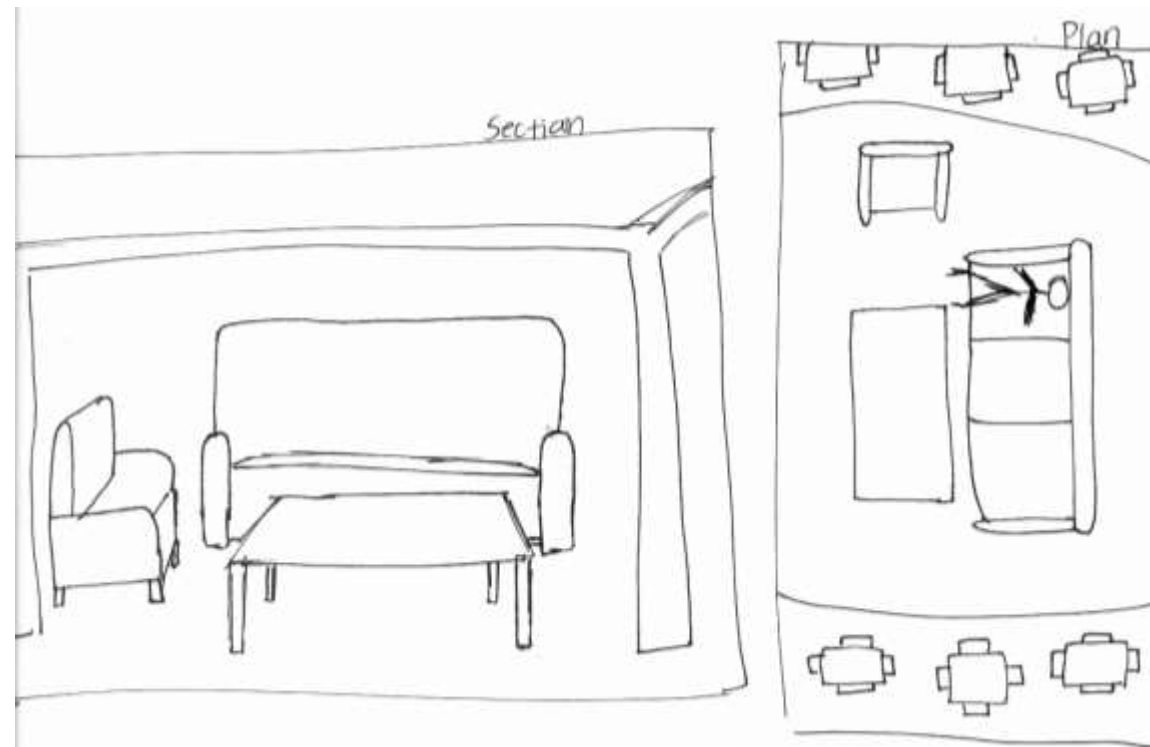
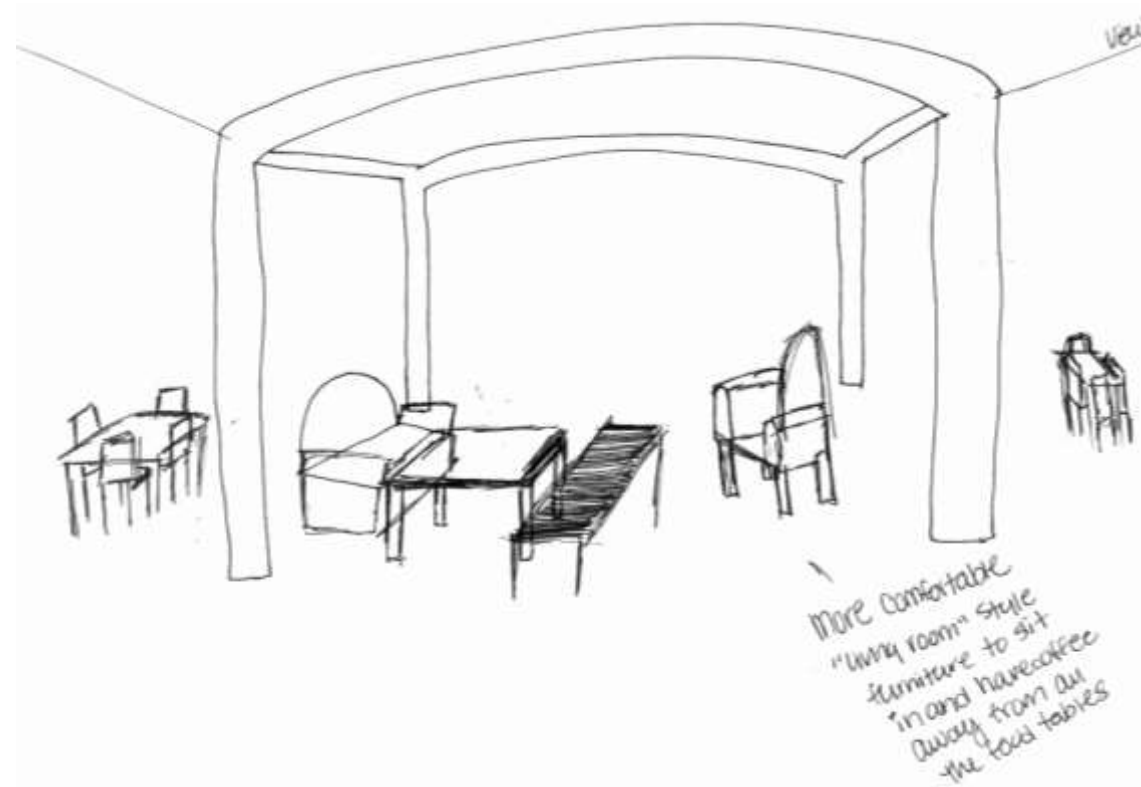
Group Planning/Meeting

Group Planning/Meeting



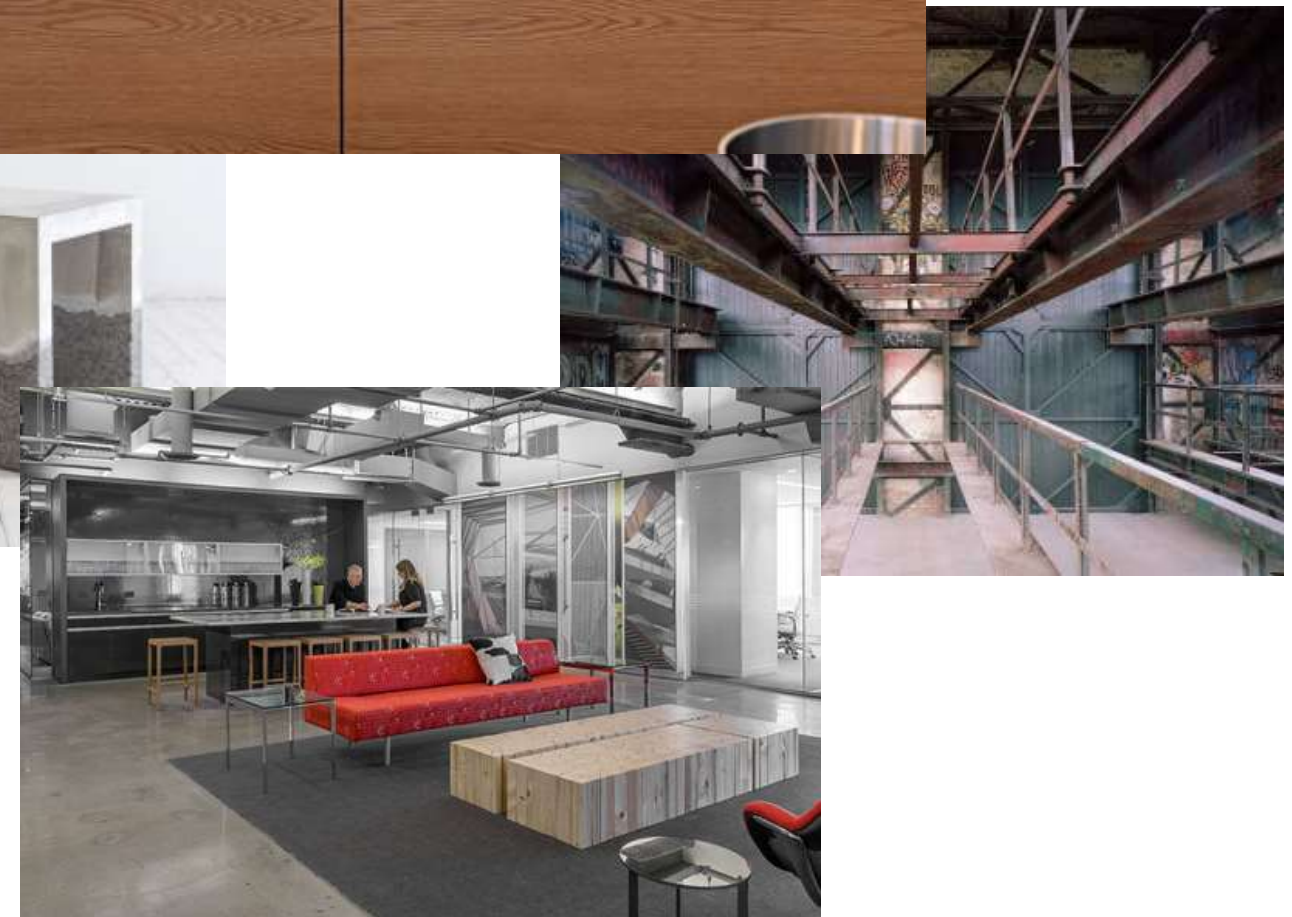
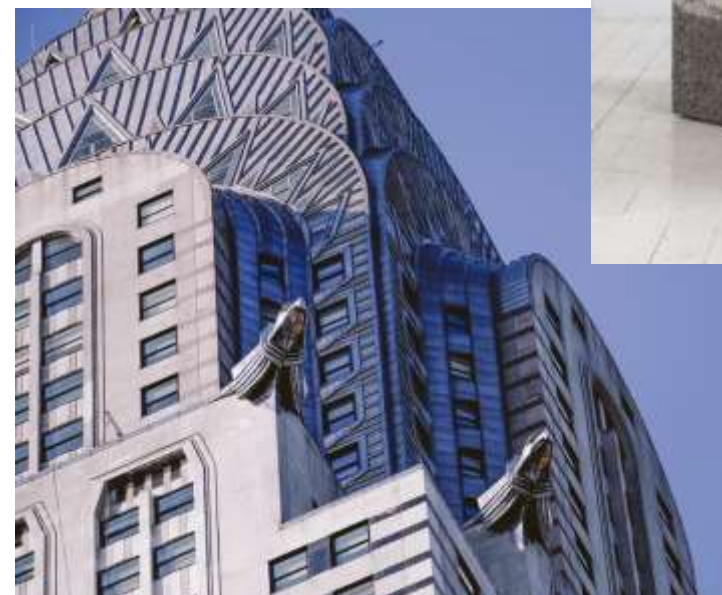


Socializing



Sparking Ideas, Promoting Creativity

The design will allow students, alumni, and professionals to collaborate. The space will host a contrast of post-industrial architecture and modern, clean furniture and accents. Modern features in the space will help spark new ideas and promote creativity while the original features of the building keep people grounded and comfortable.



Color Rationale

- neutral colors for the walls that blend well with other colors.
- colors for furniture are inspired by high end modern furniture with a mix of industrial and art deco styles
- accent colors inspired by the area around the building

Blue Grey: Neutral for the walls that contrast with the typical white or taupe walls to create visual tension.

Green and Gold: classic art deco colors from the post-industrial period add pops of color

Gold and Black: accents in these colors will create visual tension between the industrial and art deco period styles.



Inspiration Images



EASY SOPHISTICATION



Inspiration Images

