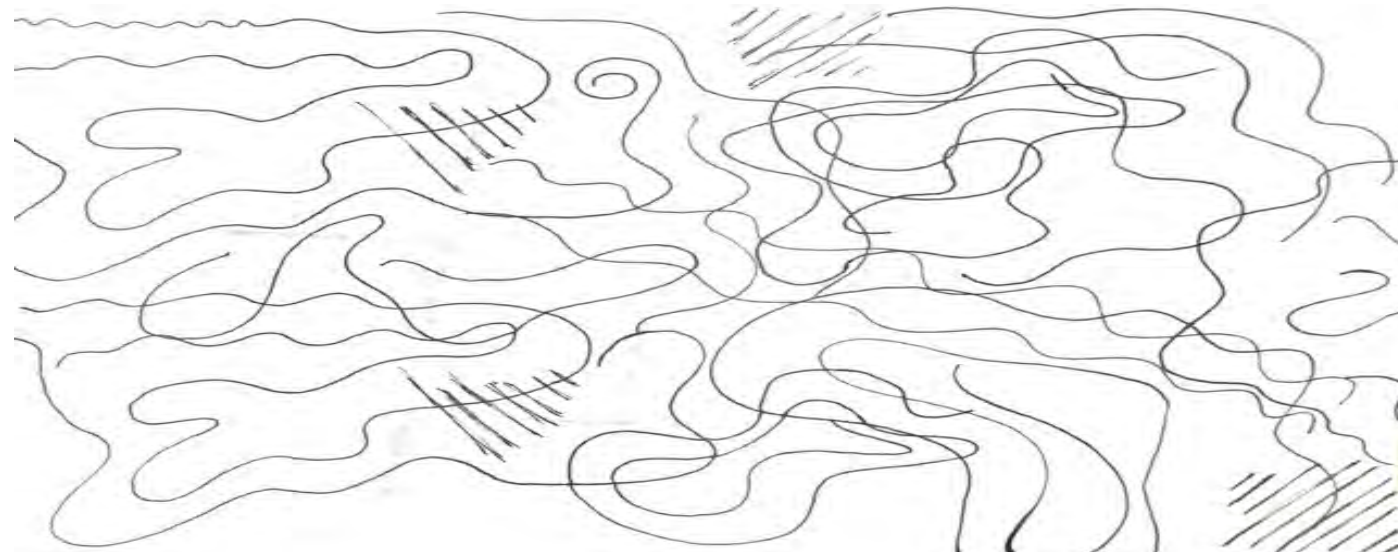
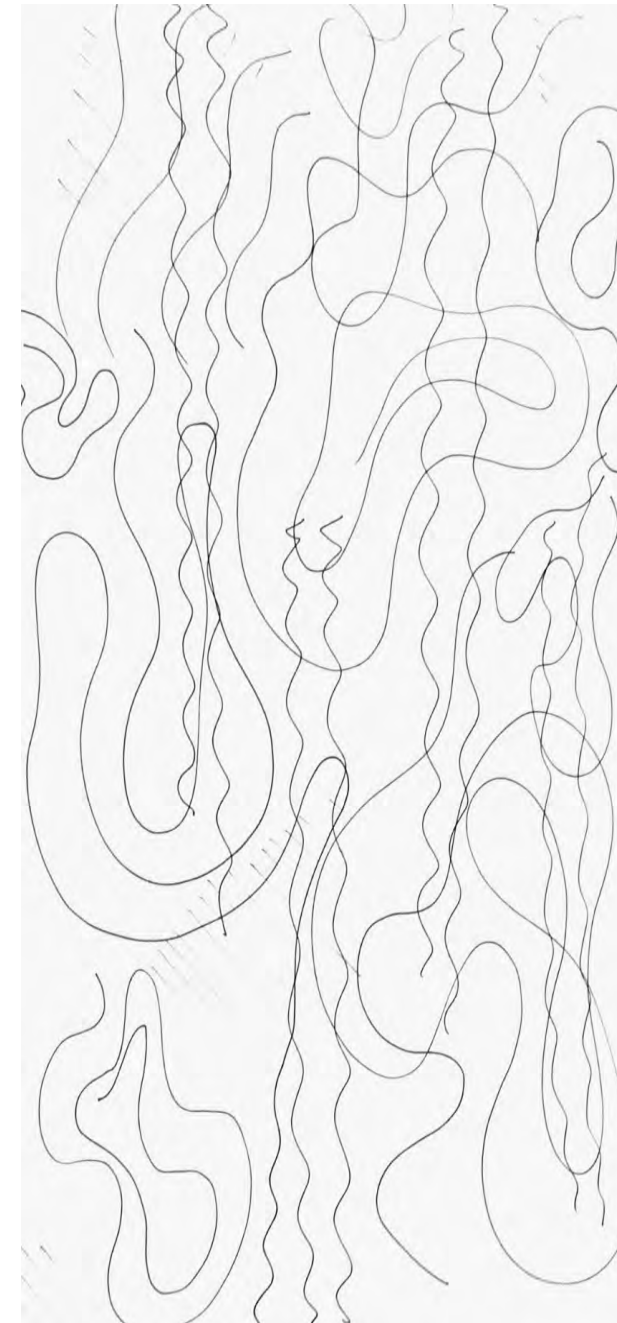
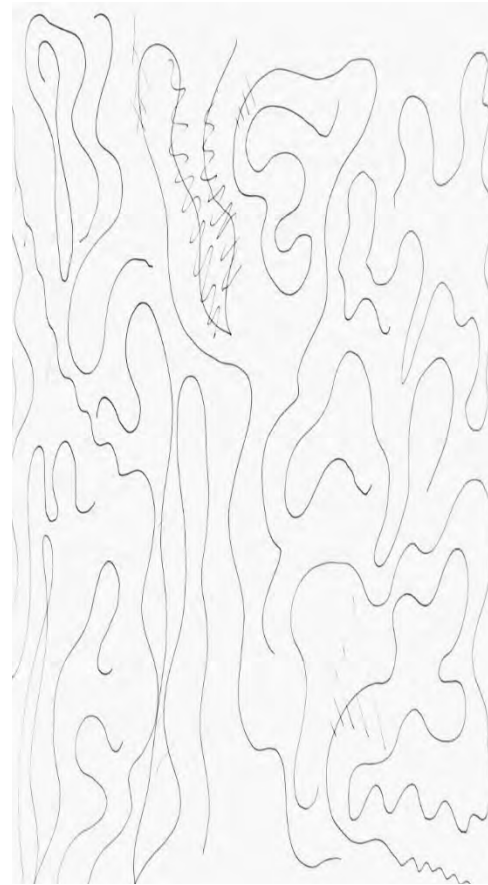


# **IDEATION**

**IDSN 2102-PORTFOLIO 2**

**HANNAH HEATH**

# MODELING TO MUSIC



# MODELING TO MUSIC



# MODELING TO MUSIC



# PROBLEM RESOLUTION SKETCHES: WAYFINDING

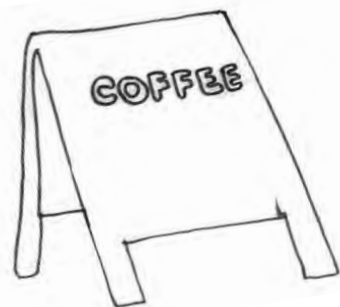


Visual cue: Pendant lighting over serving table  
Guides customers towards counter  
Ceiling acoustics will flow through the space  
Lighting reflects off of the panels that lower ceiling

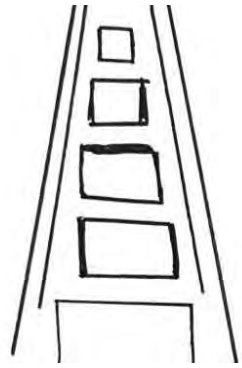


Signs placed at entrance place

Guides to the serving counter and seating areas in the space



# STAIRS

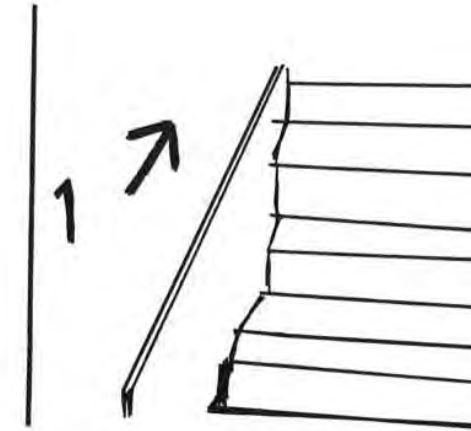


Square lighting that leads the path to stairs



Physical and visual cues to help people find the stairs

Signage that points towards the second level of the space



Visual cues to guide people towards the second-floor stairs area

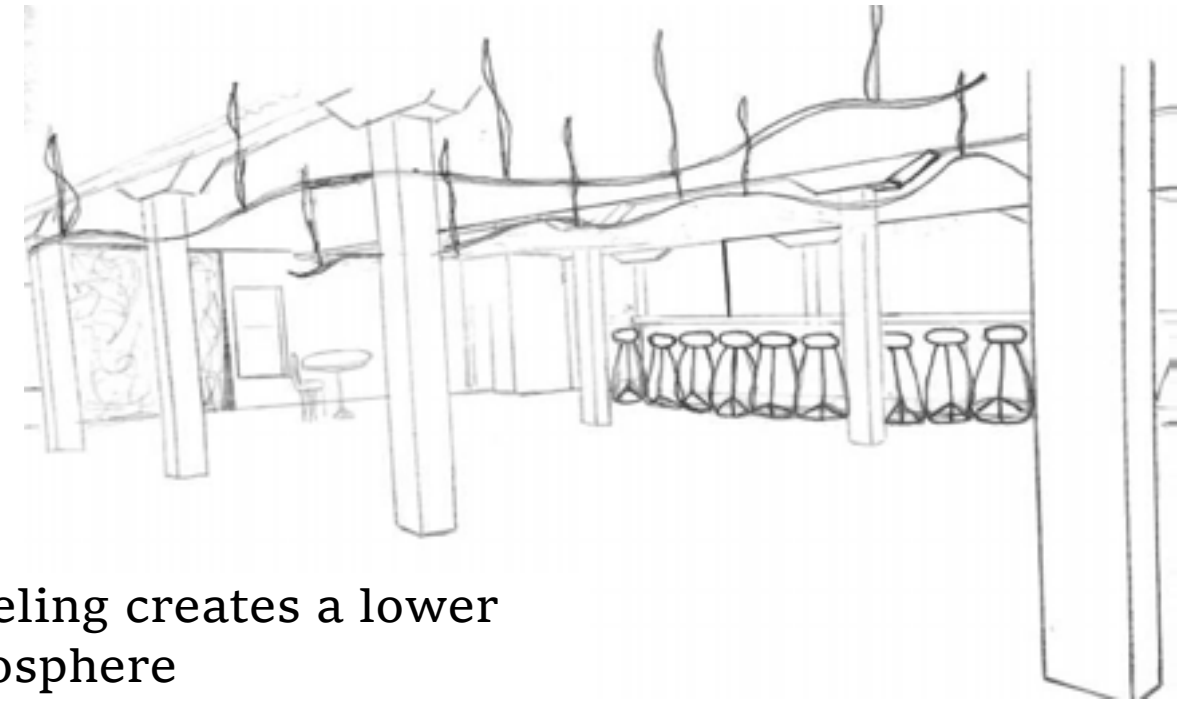
# CEILING/DAYLIGHTING



Curved Tan Paneling - Acoustics

Limits the amount of daylight that enters the space; only partial amount

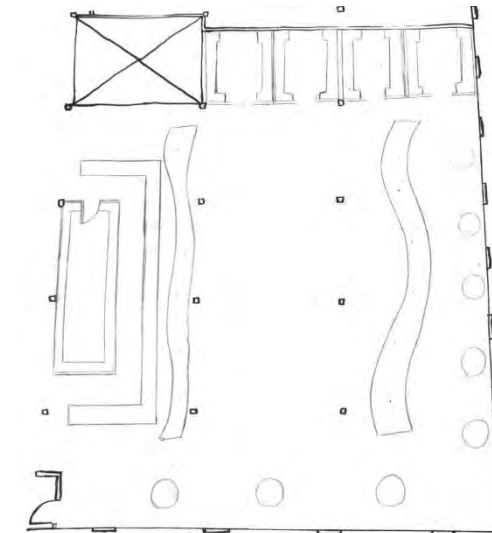
Creates a waved shadow that will allow to flow through the space



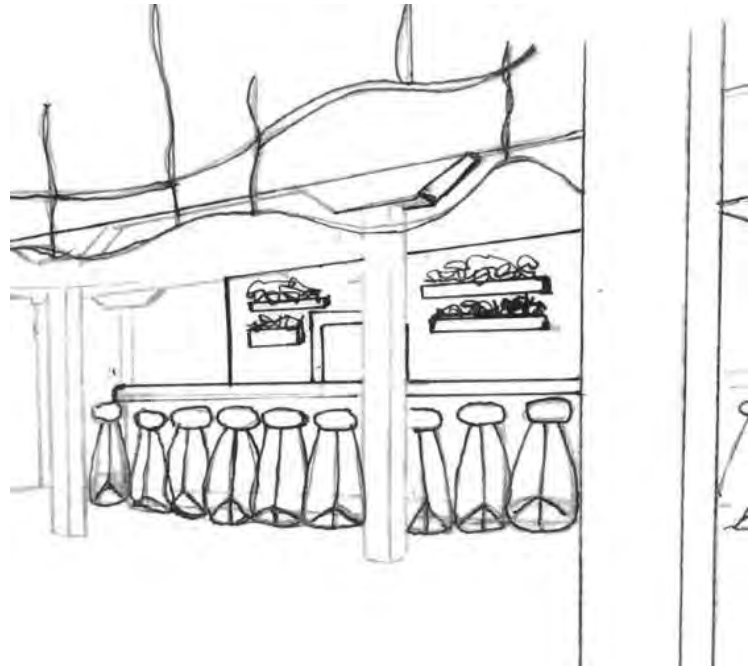
Curved Paneling creates a lower ceiling atmosphere

Thin layers of light-colored material will not reflect heat

Panels in two areas will reflect partial amounts of sunlight coming from skylight



# BACK OF HOUSE



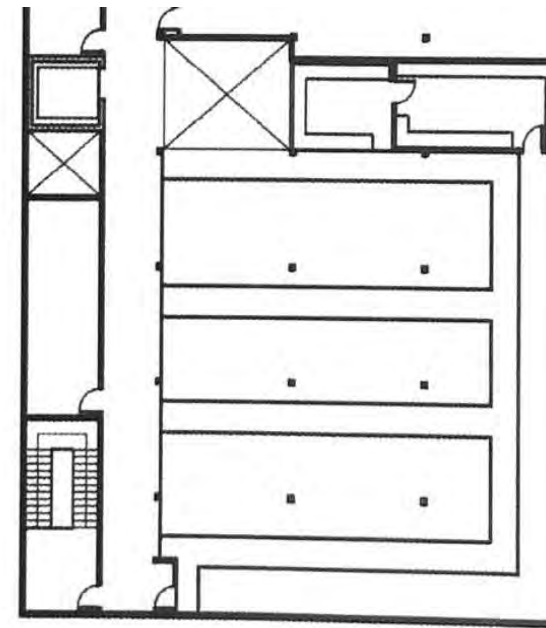
Enclosed volume for back of house functions

The volume of this backroom is in Solution 2 plan

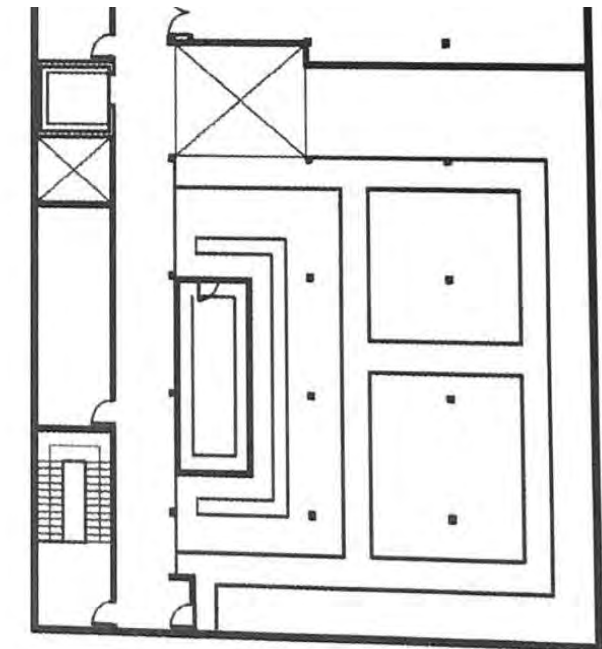
Wrap around table and barstools on the outside of back of house

Allows for easy access and flow

Solution 1



Solution 2



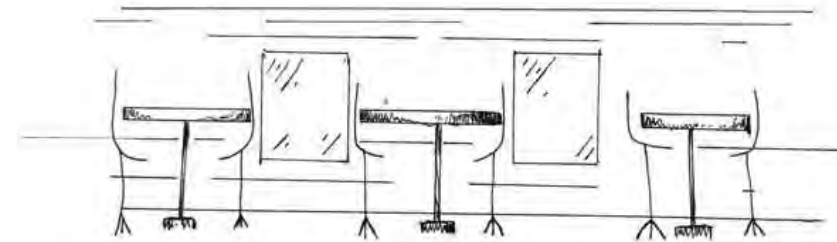


# ACTIVITY SPACE STUDIES: DIFFUSE FOCUS WORK

6A:

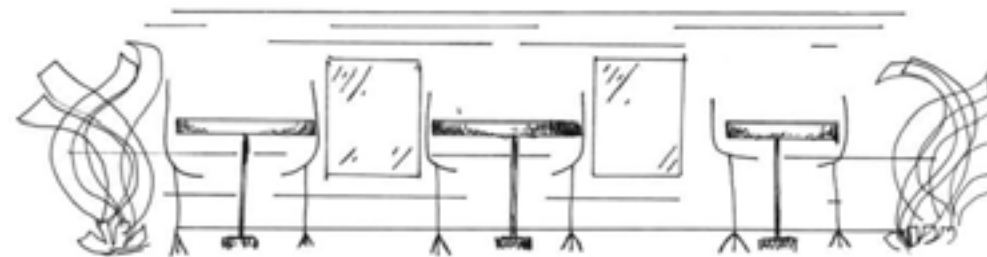


6B:



Tables around the outer area of space  
Gives view of window and daylight  
Place to journal/draw in sketchbook

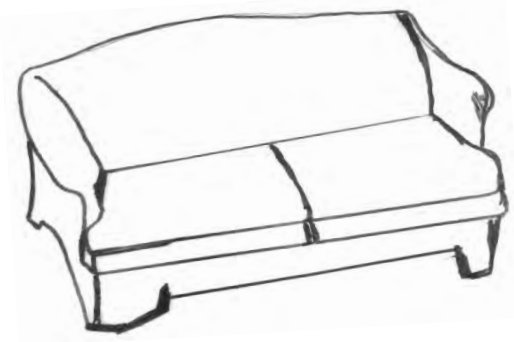
6C:



Music Model used as decor for  
space

# DAYDREAMING

6A:

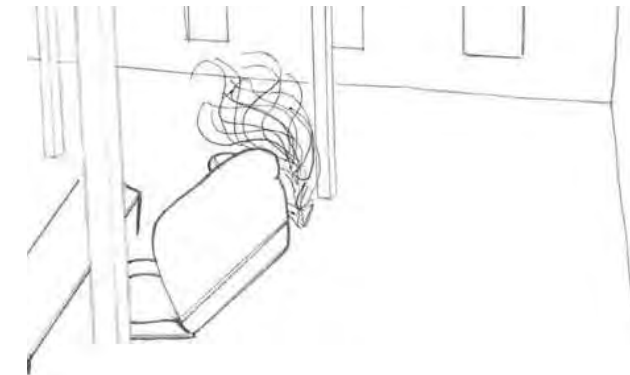


6B:

Sofas to create lounge area to relax/ daydream  
Comfortable, easy flowing seating arrangements



6C:



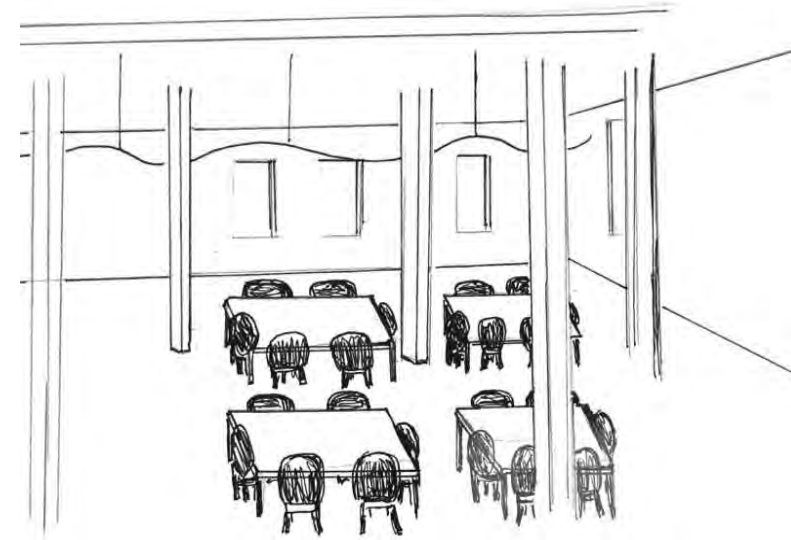
Music model used as large reading lamp

# GROUP PLANNING/MEETING

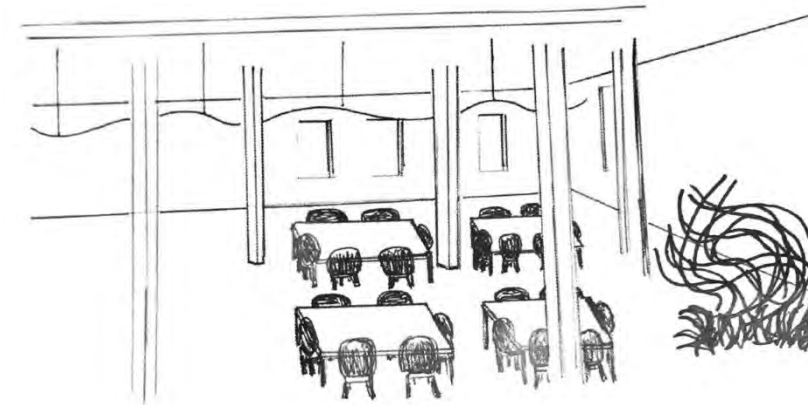
6A:



6B:  
Large group sized  
tables



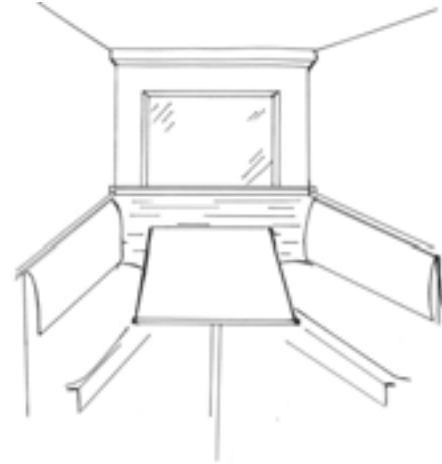
6C:



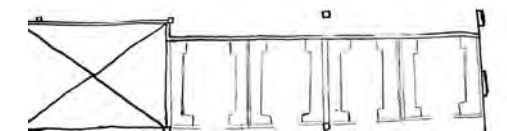
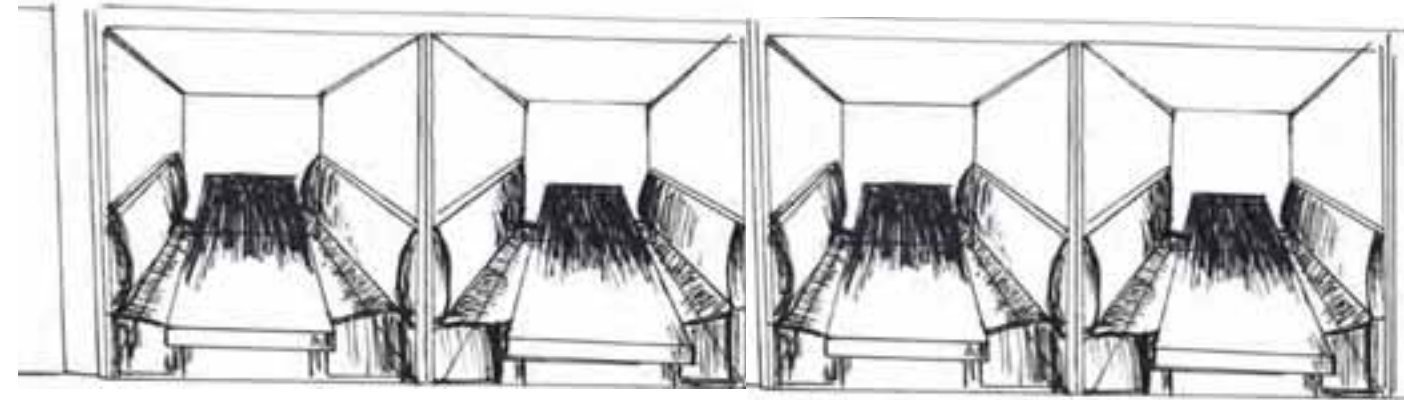
Music Model added as art  
sculpture

# SOCIALIZING

6A:

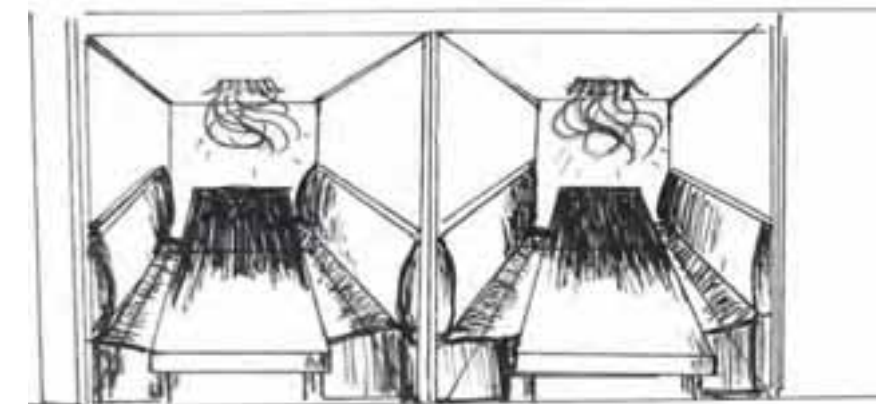


6B:



Row of booths to create a small gathering area to socialize with others while having an enclosed, private space

6C:



Booths -Music Model  
Music Model as light fixture  
Brightens small, cocoon area

# CONCEPT/COLOR RATIONALE/INSPIRATION IMAGES

## CONCEPT:

- This space is designed to give people an escape from everyday life
- To give a comfortable, quiet atmosphere for customers to relax alone or with colleagues
- Place to relax while getting tasks/assignments done



# CONCEPT/COLOR RATIONALE/INSPIRATION IMAGES

## COLOR SCHEME/RATIONALE:

- Warm, sheltering, and cozy color scheme
- Refreshing, calm, stress free environment
- Greens communicate for gathering and sharing information

