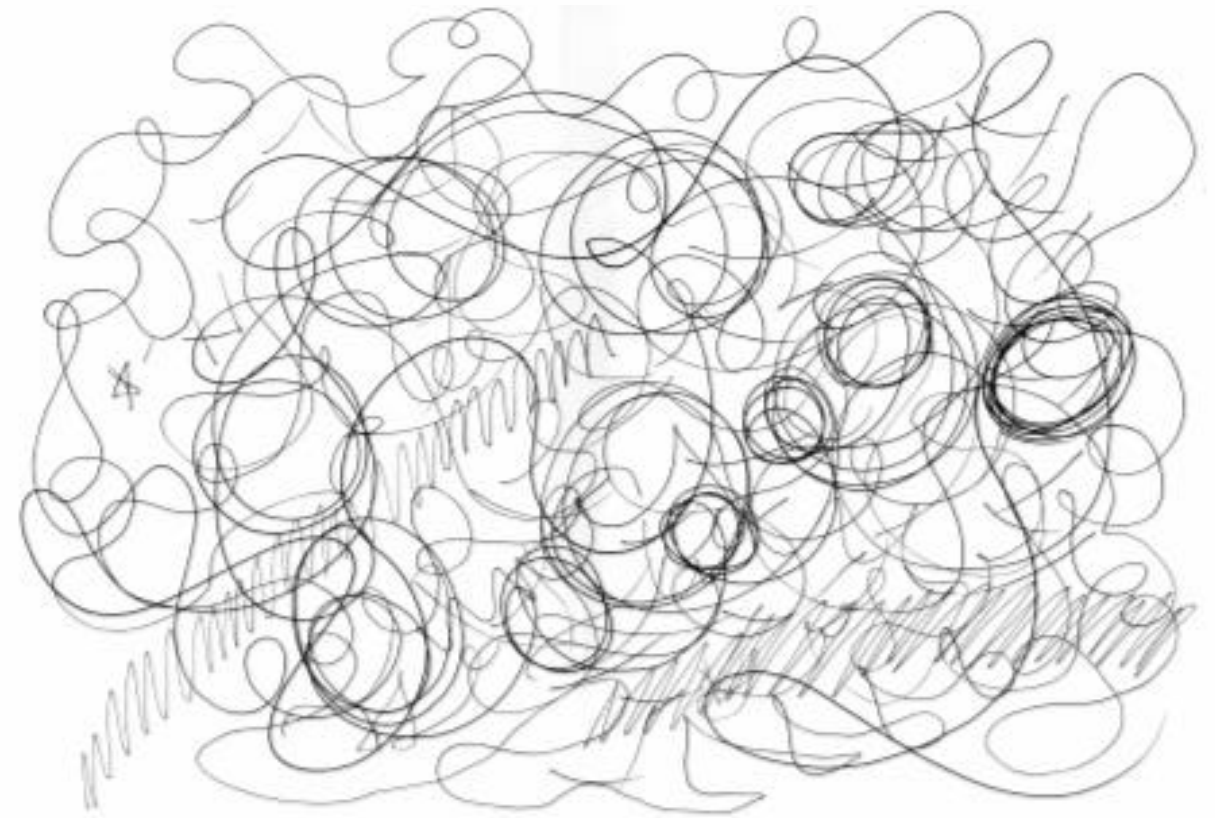
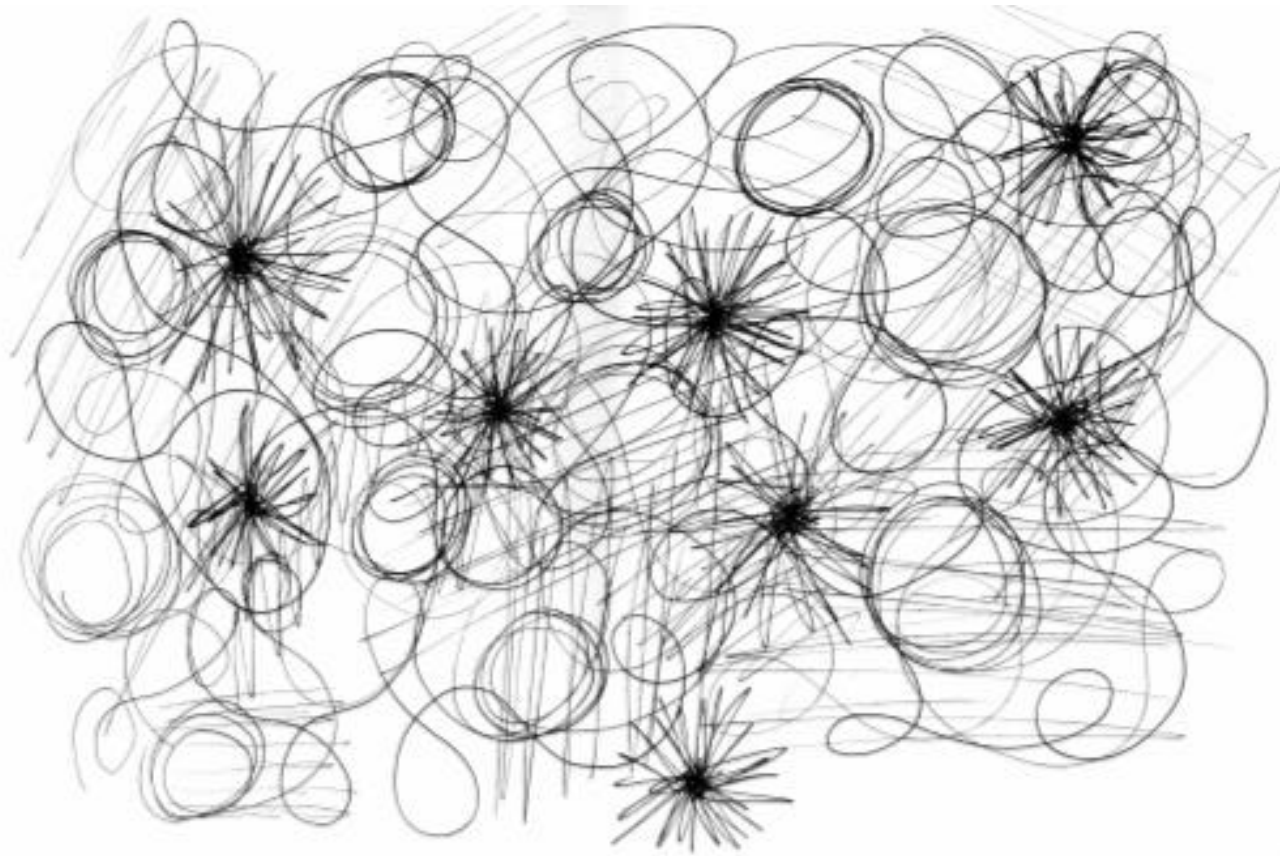
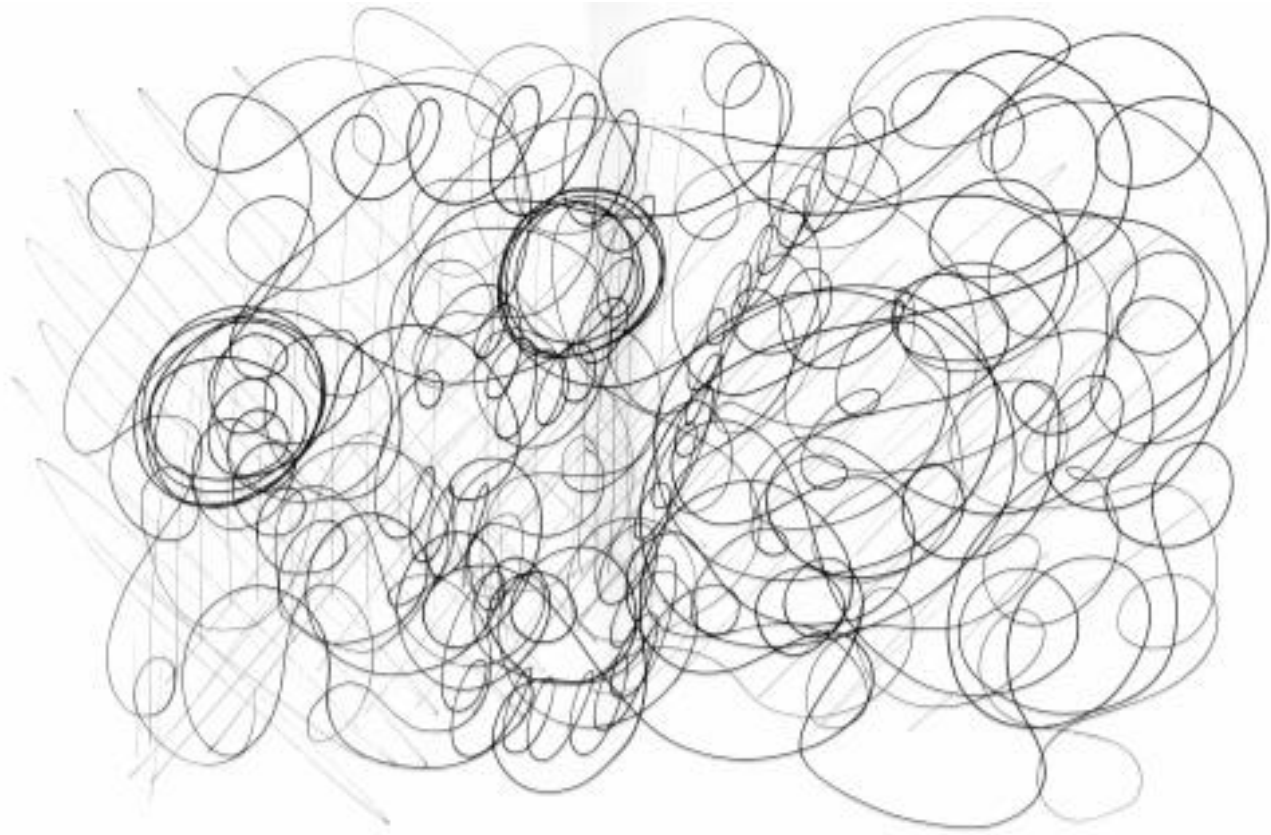
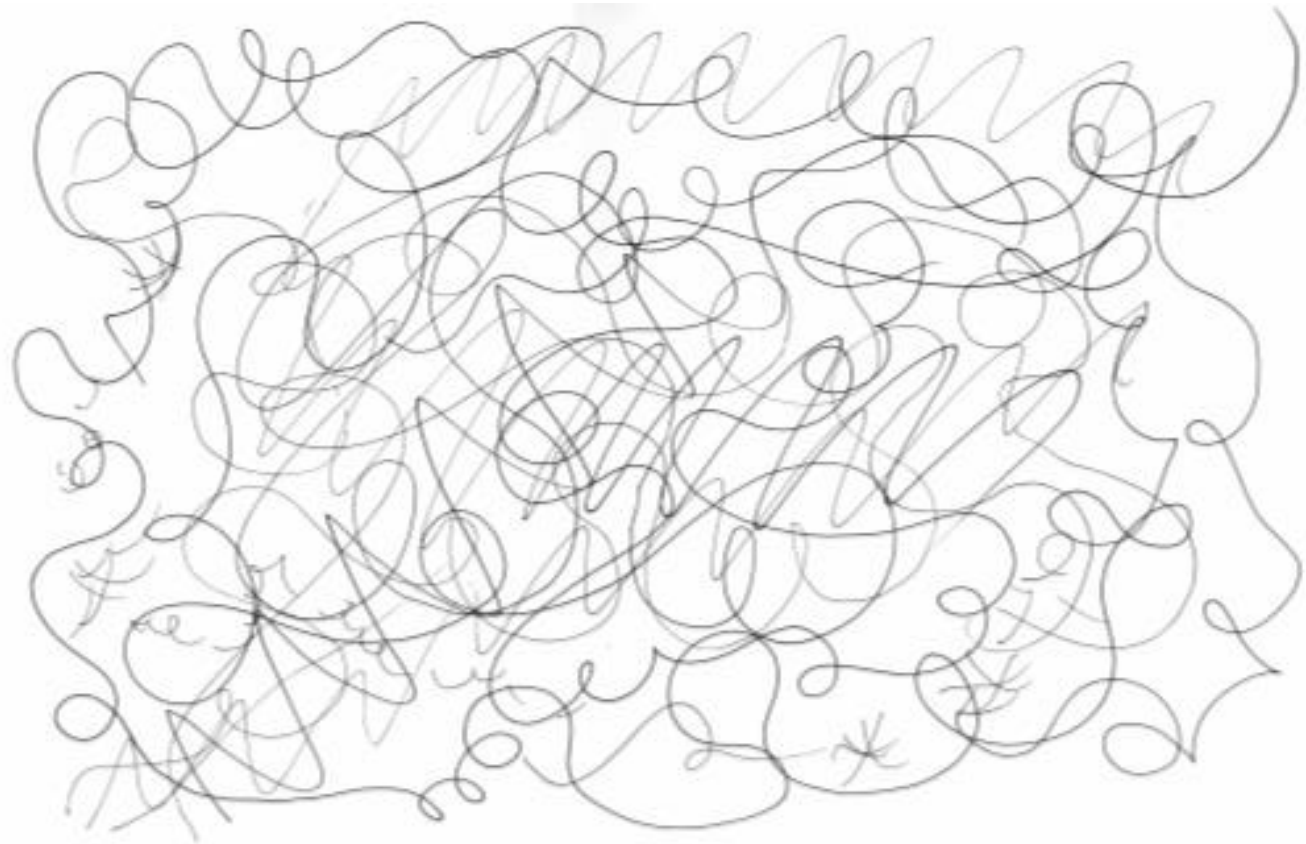


PORTFOLIO 2

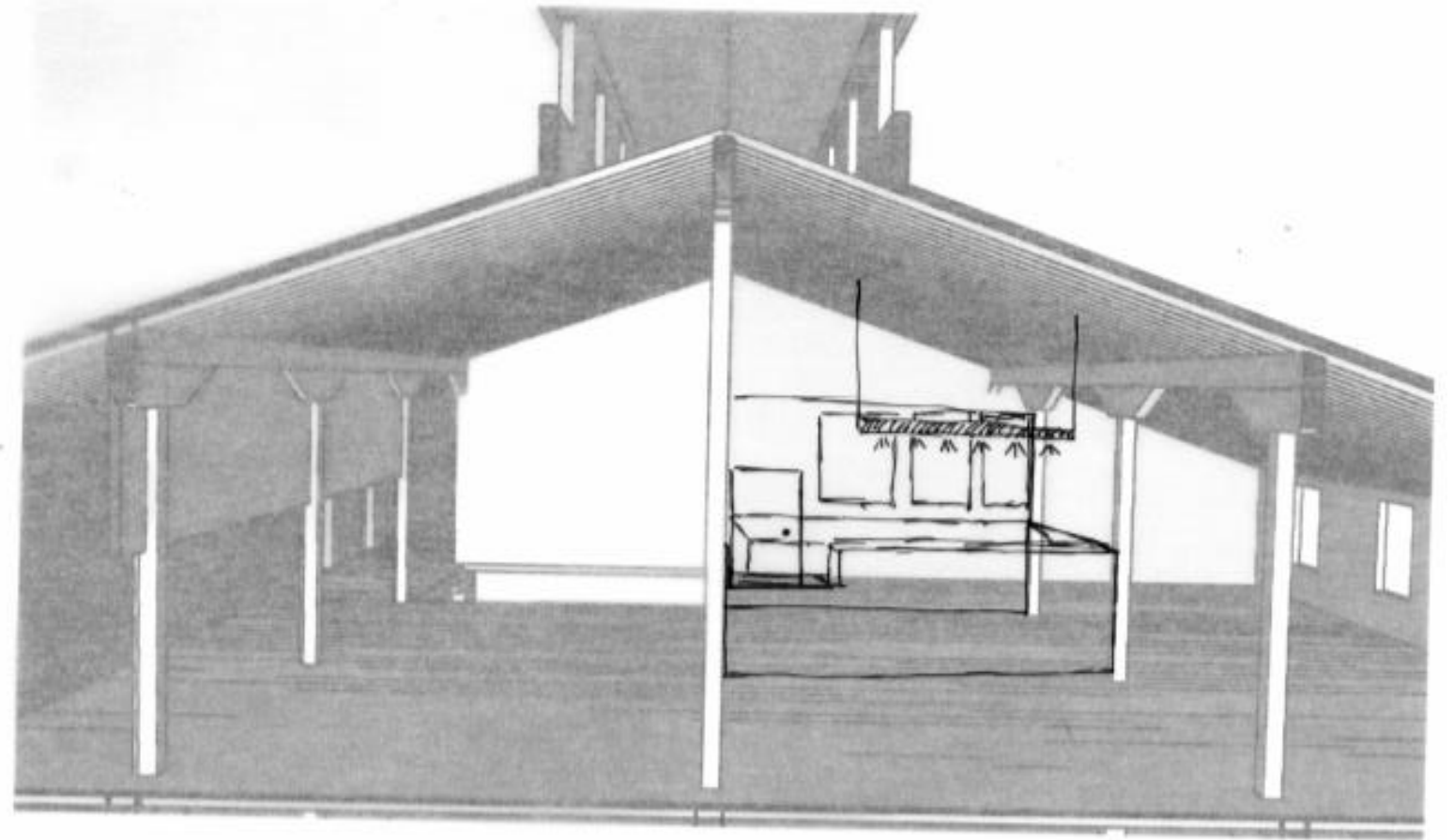
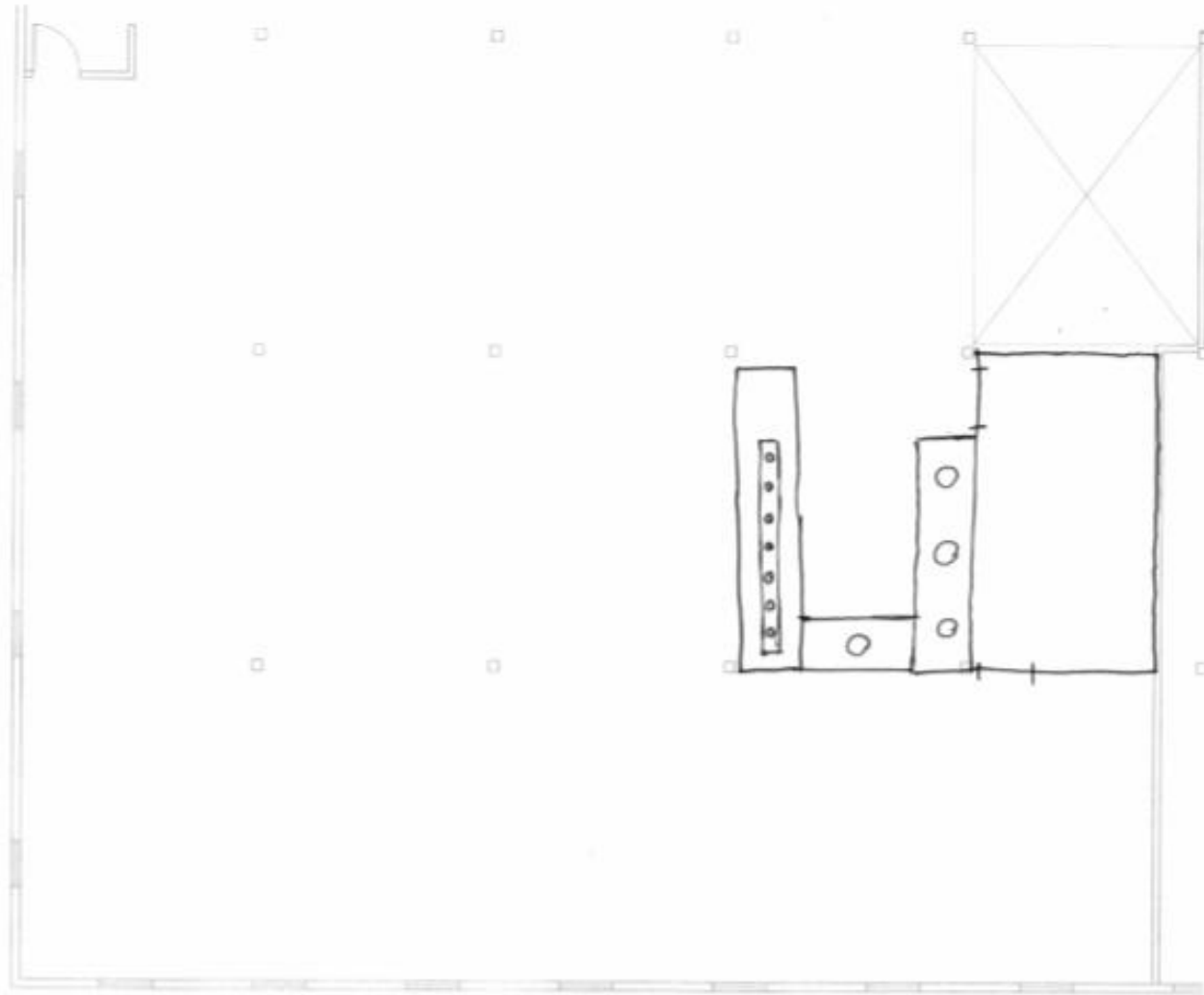
Samantha Heuman



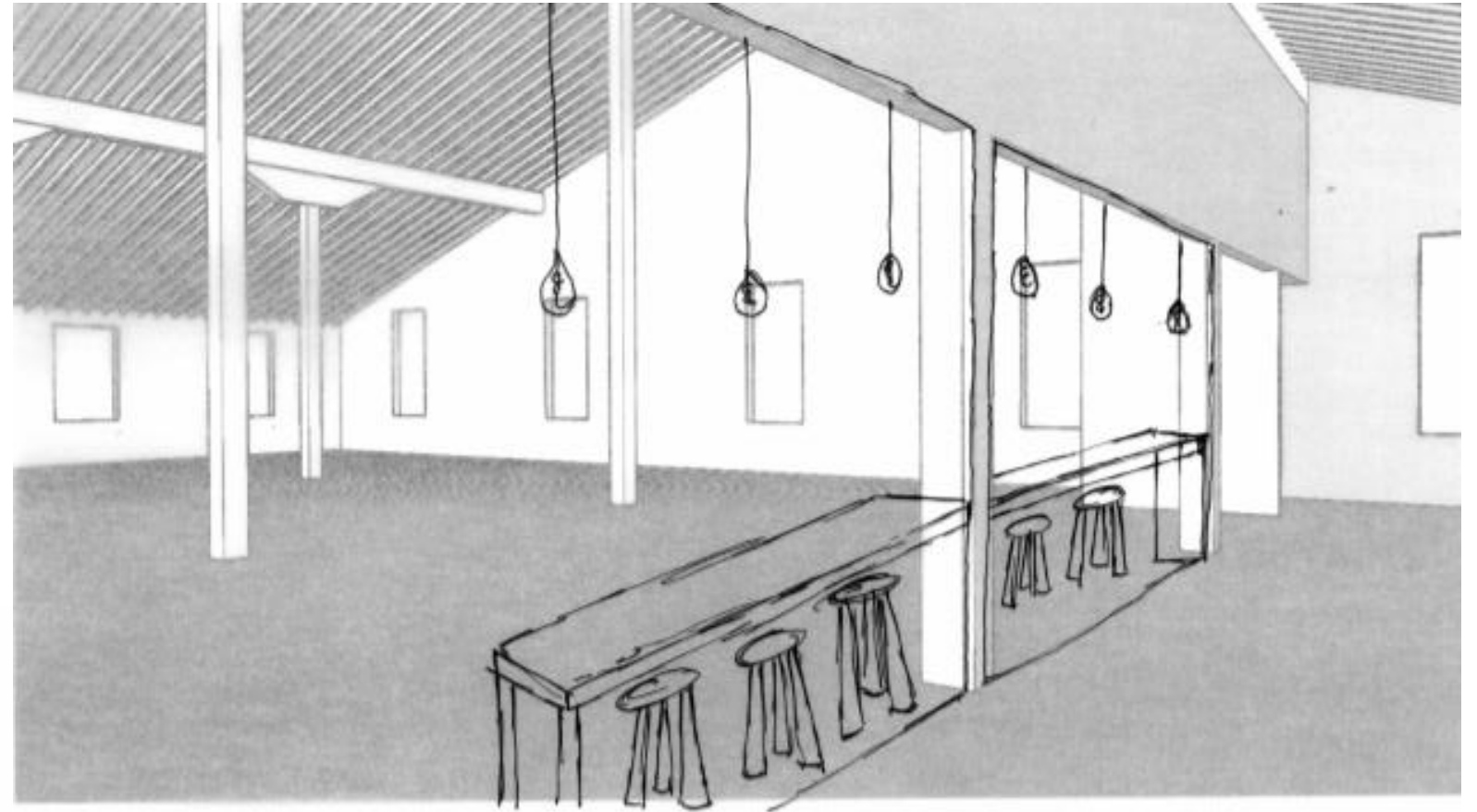
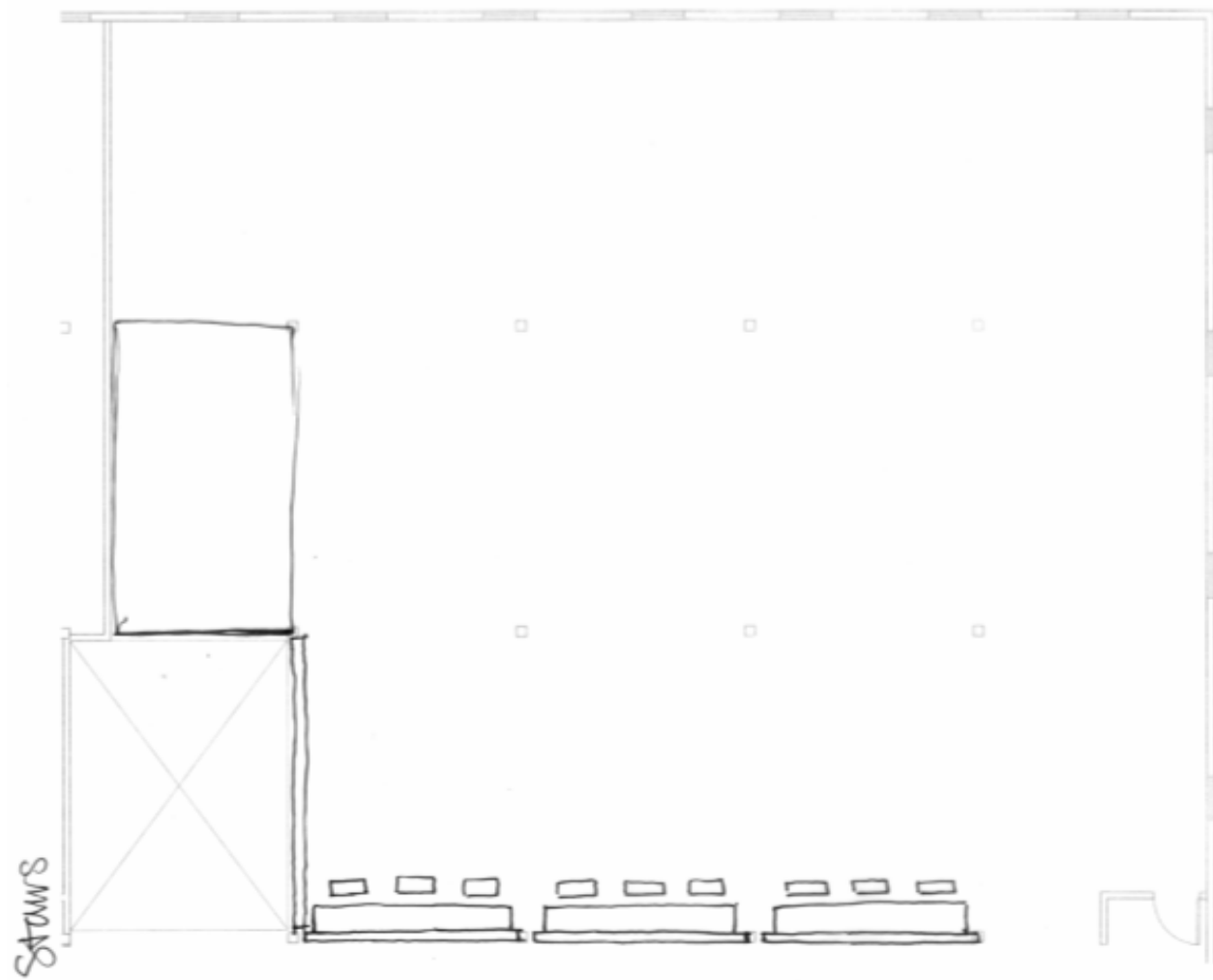
DRAWING TO MUSIC



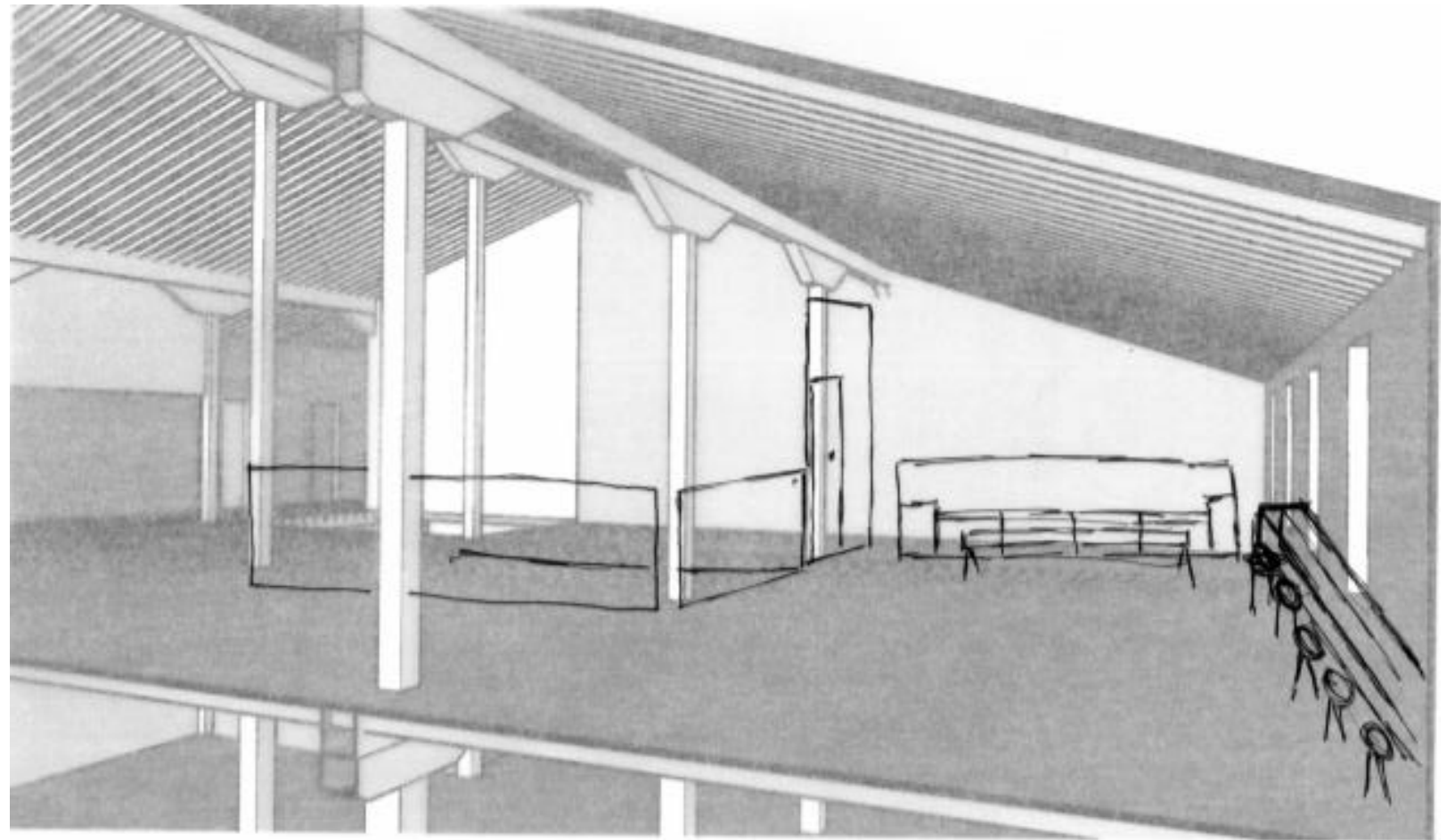
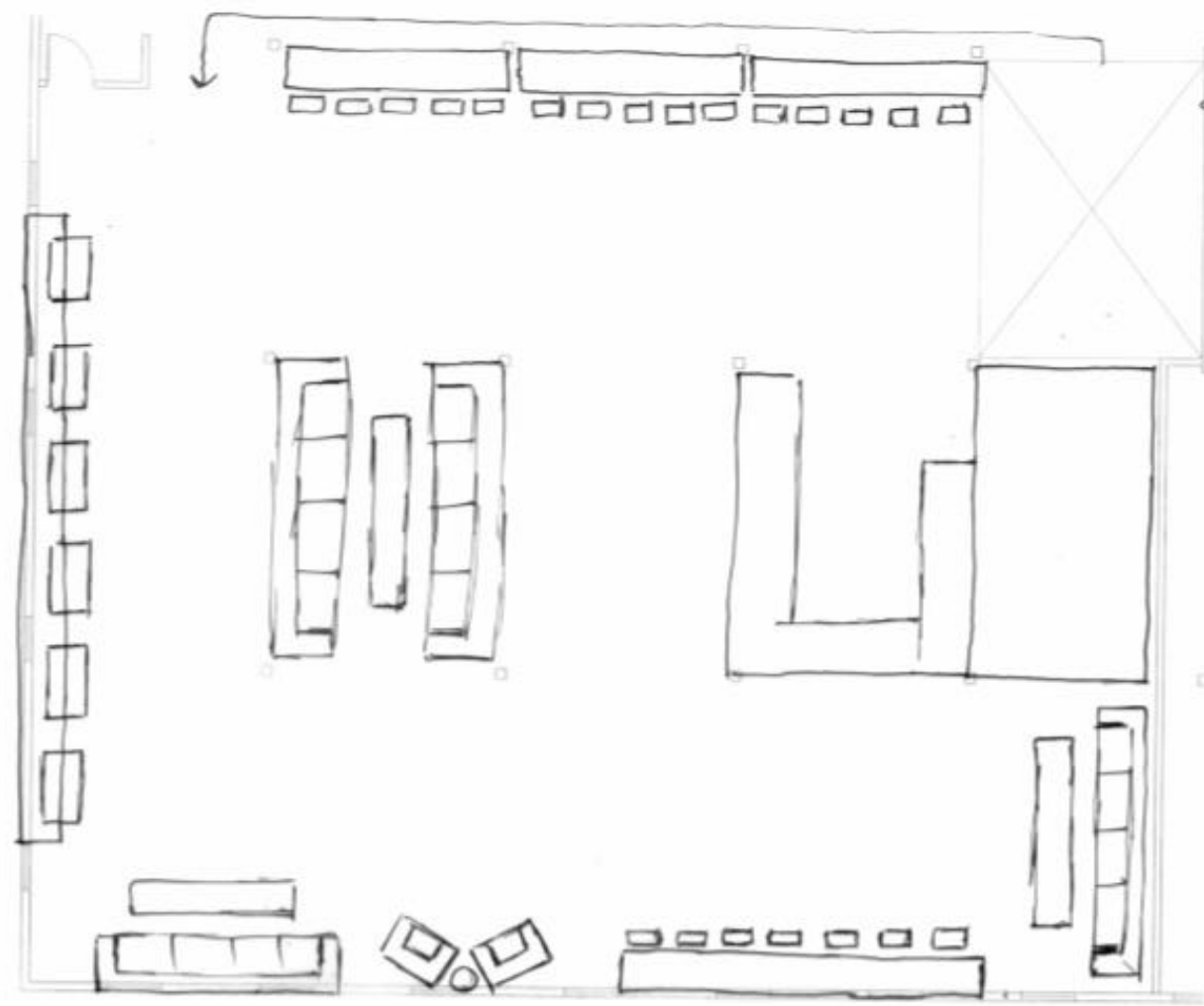
MUSIC MODEL



BACK OF HOUSE

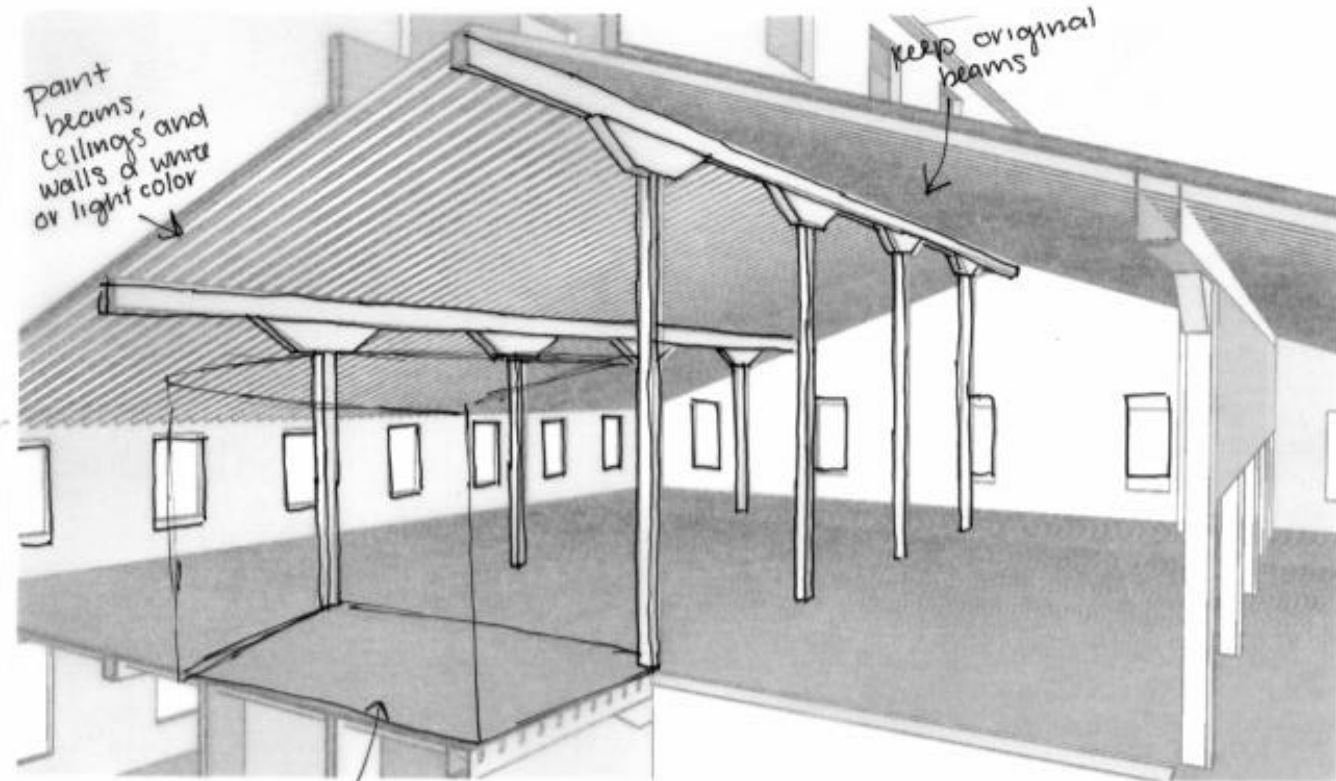


STAIRS



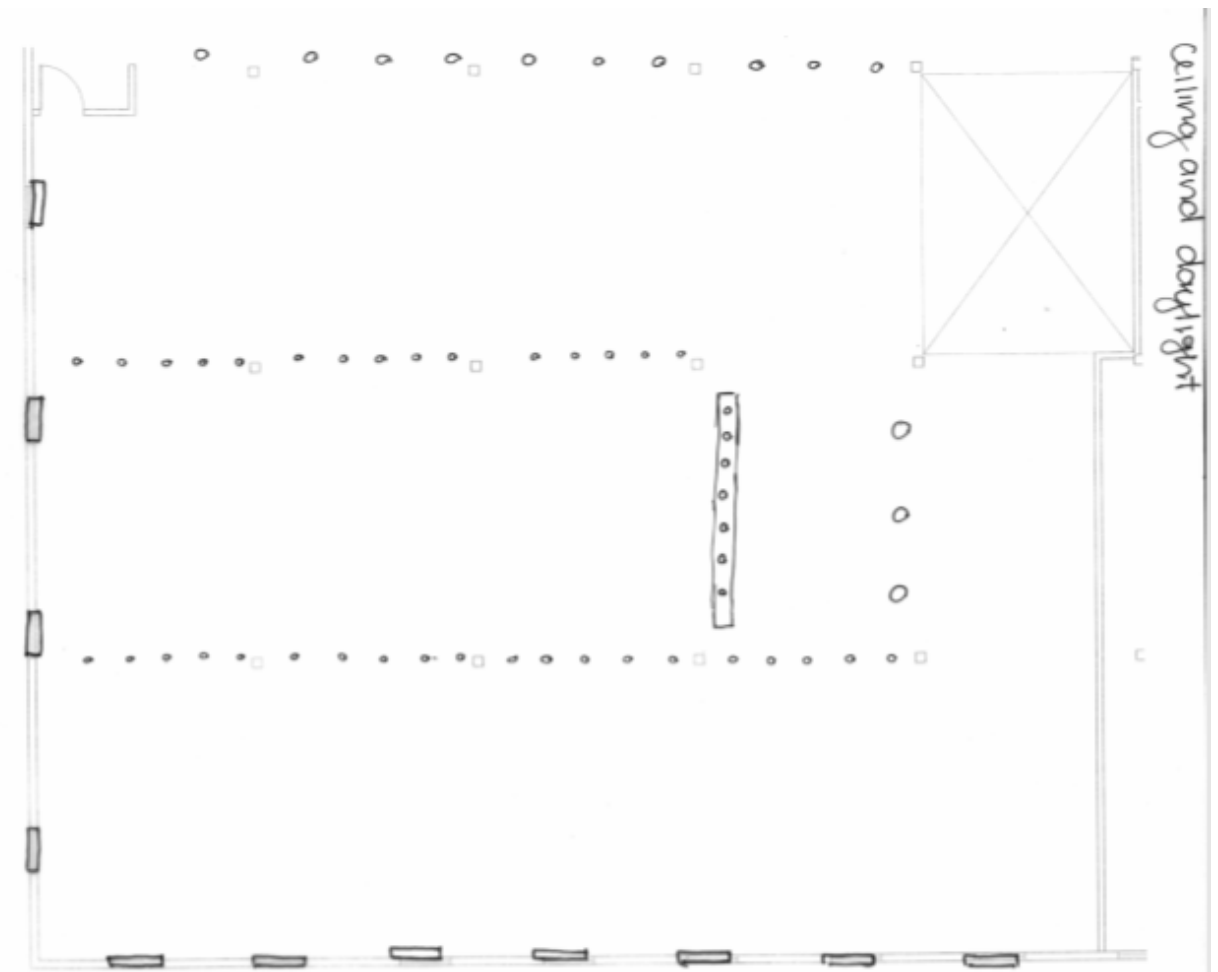
WAYFINDING

ceiling and daylight

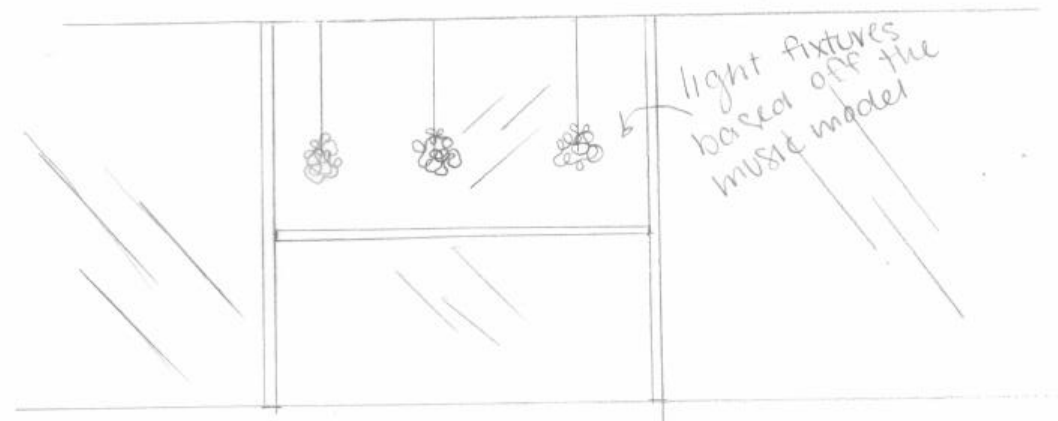
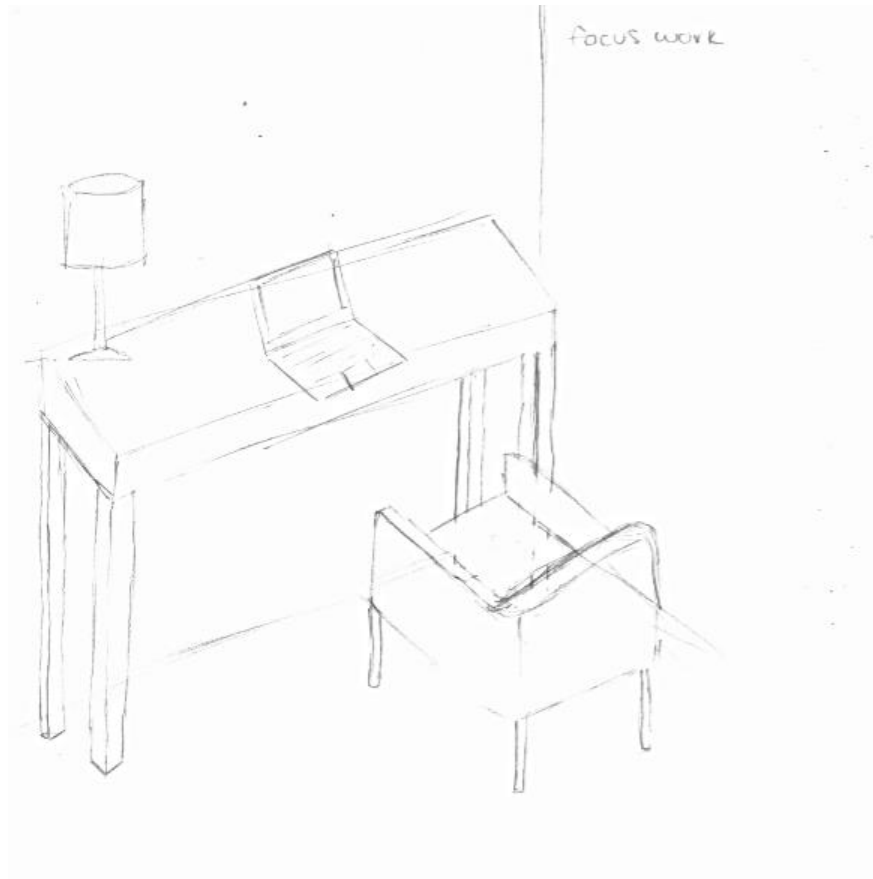


put a ceiling on the back of horse

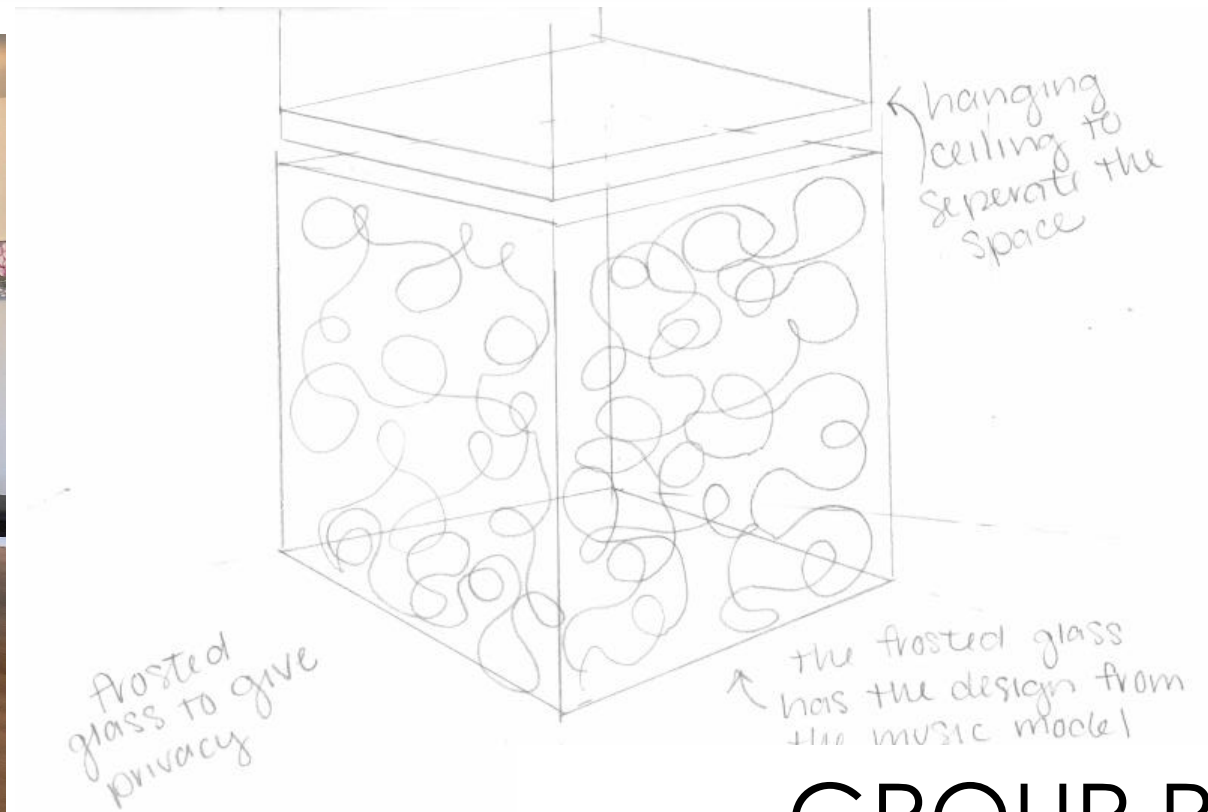
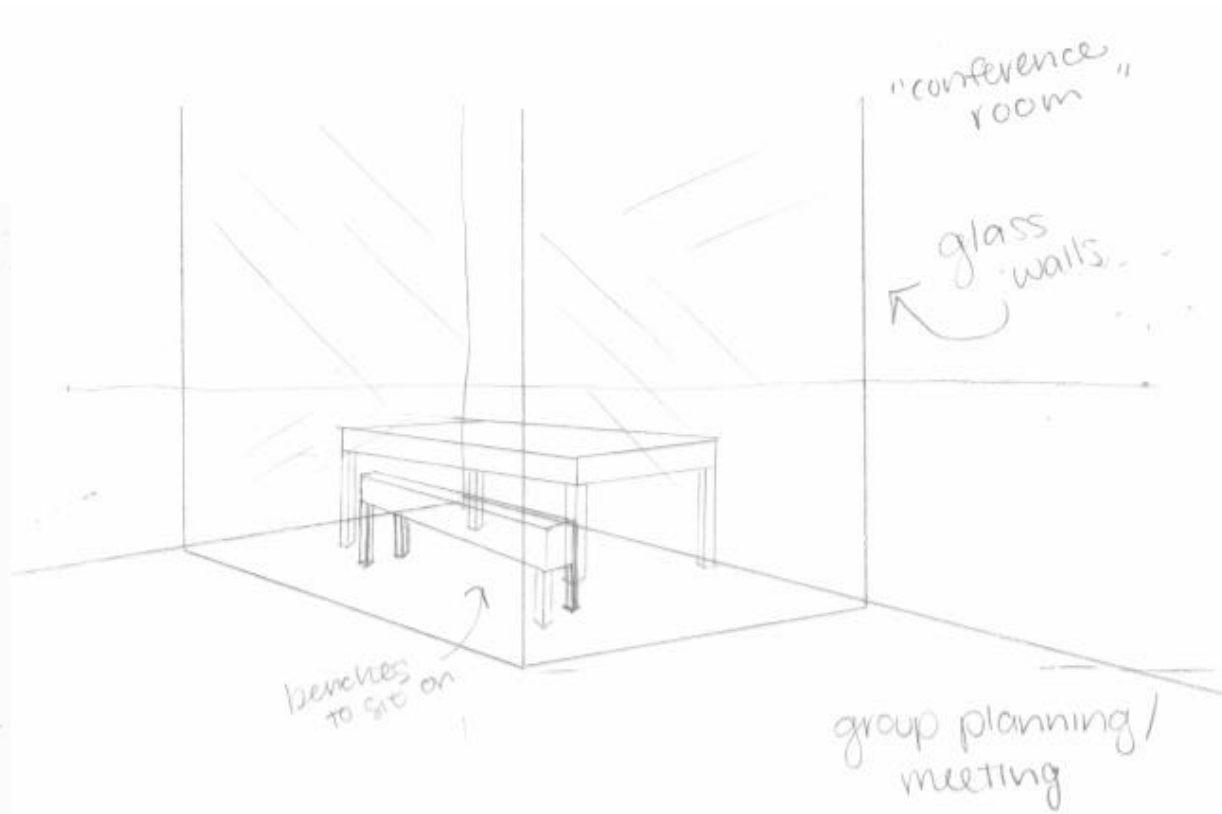
*add lots of artificial lighting to the space



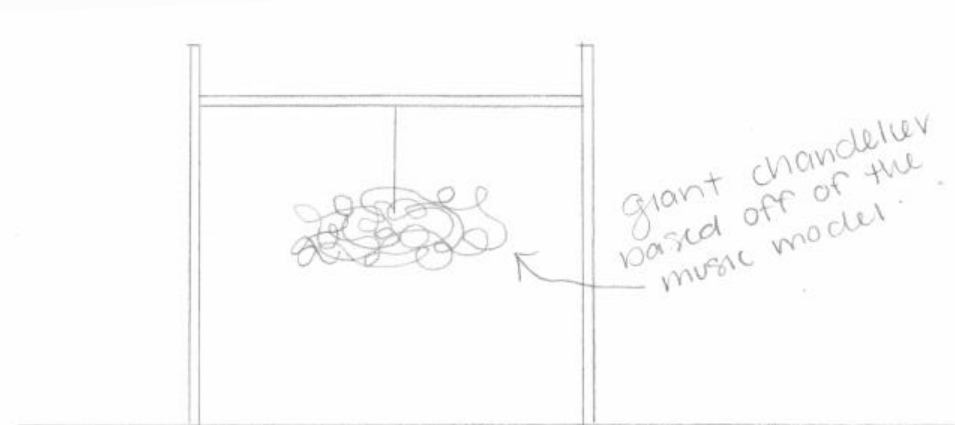
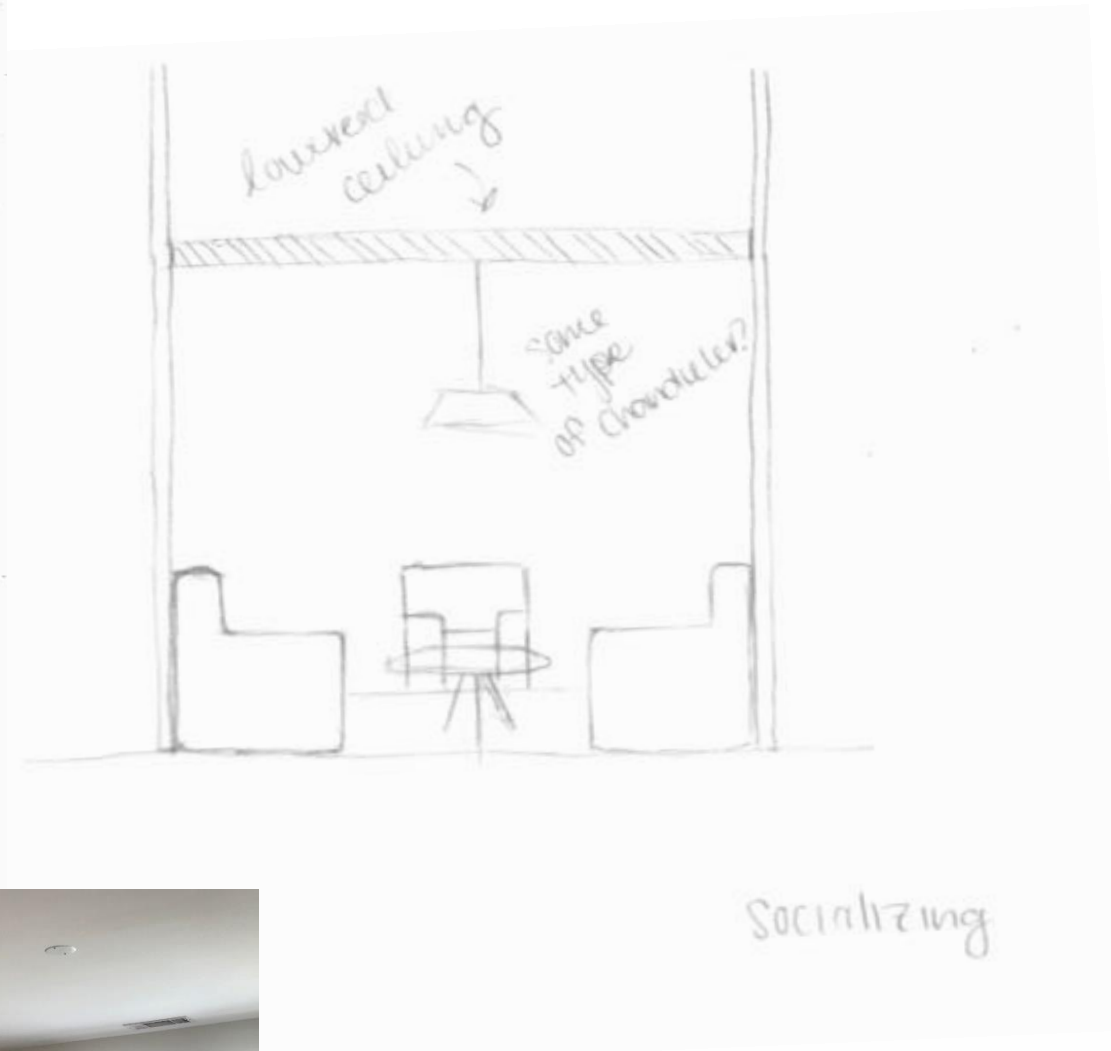
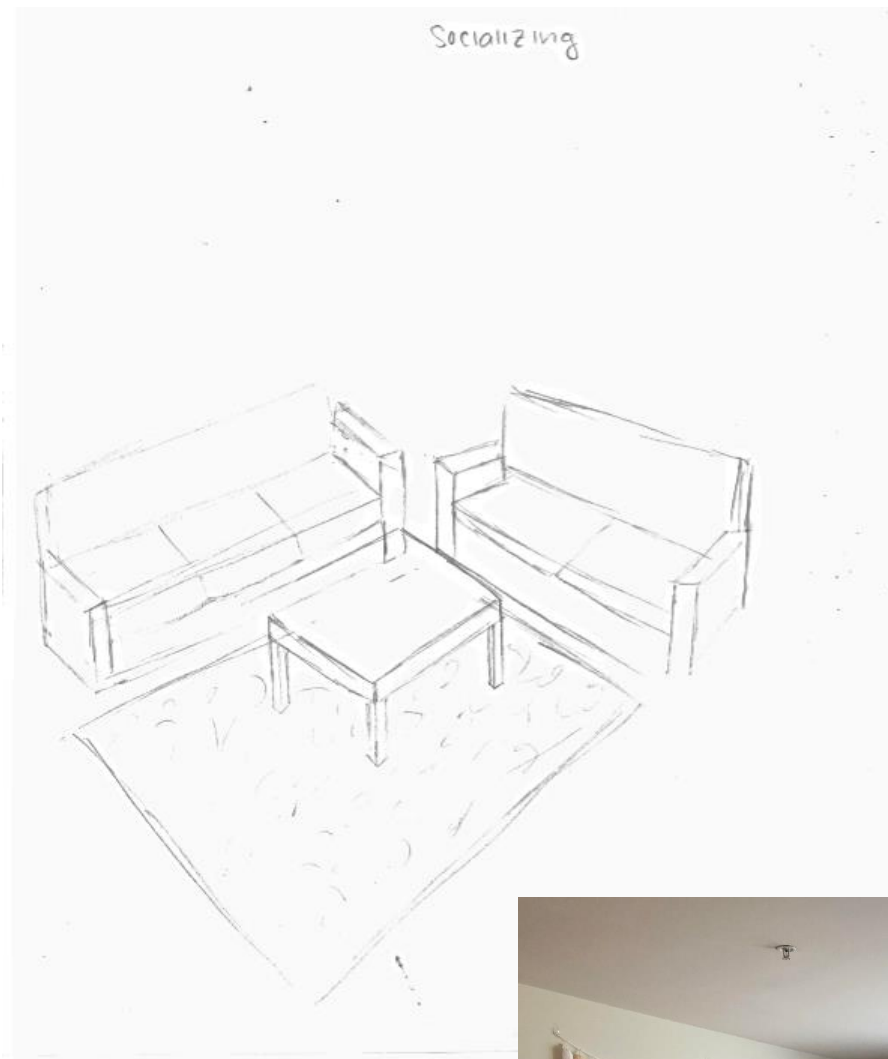
DAYLIGHT/LIGHTING/CEILING



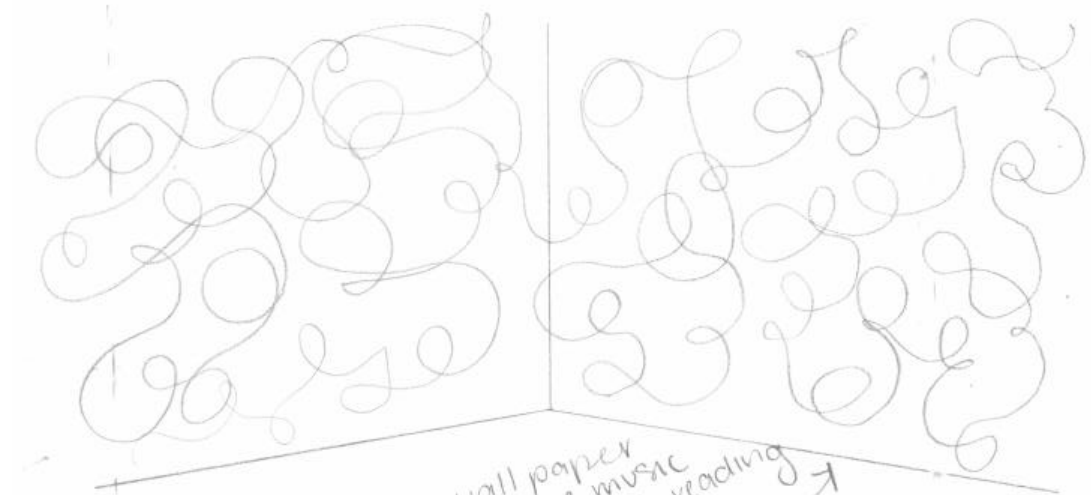
FOCUS WORK



GROUP PLANNING



SOCIALIZING



printed wall paper
based off of the music
model to separate
hook from the reading
rest of
the coffee house



DAYDREAMING

- Researching this building was very interesting due to the rich history and culture of the building from being a tobacco warehouse.
- Drew inspiration from the tobacco leaf, the color of tobacco once it has been dried as well as the colors of the stained wood within the building itself.
- Because of the building's history of processing and shipping the tobacco, the design concept for the space is based off of tobacco.
- Tobacco is a relaxant and the idea for the space is for the costumers to be able to come in, relax and enjoy themselves after a stressful day at work.

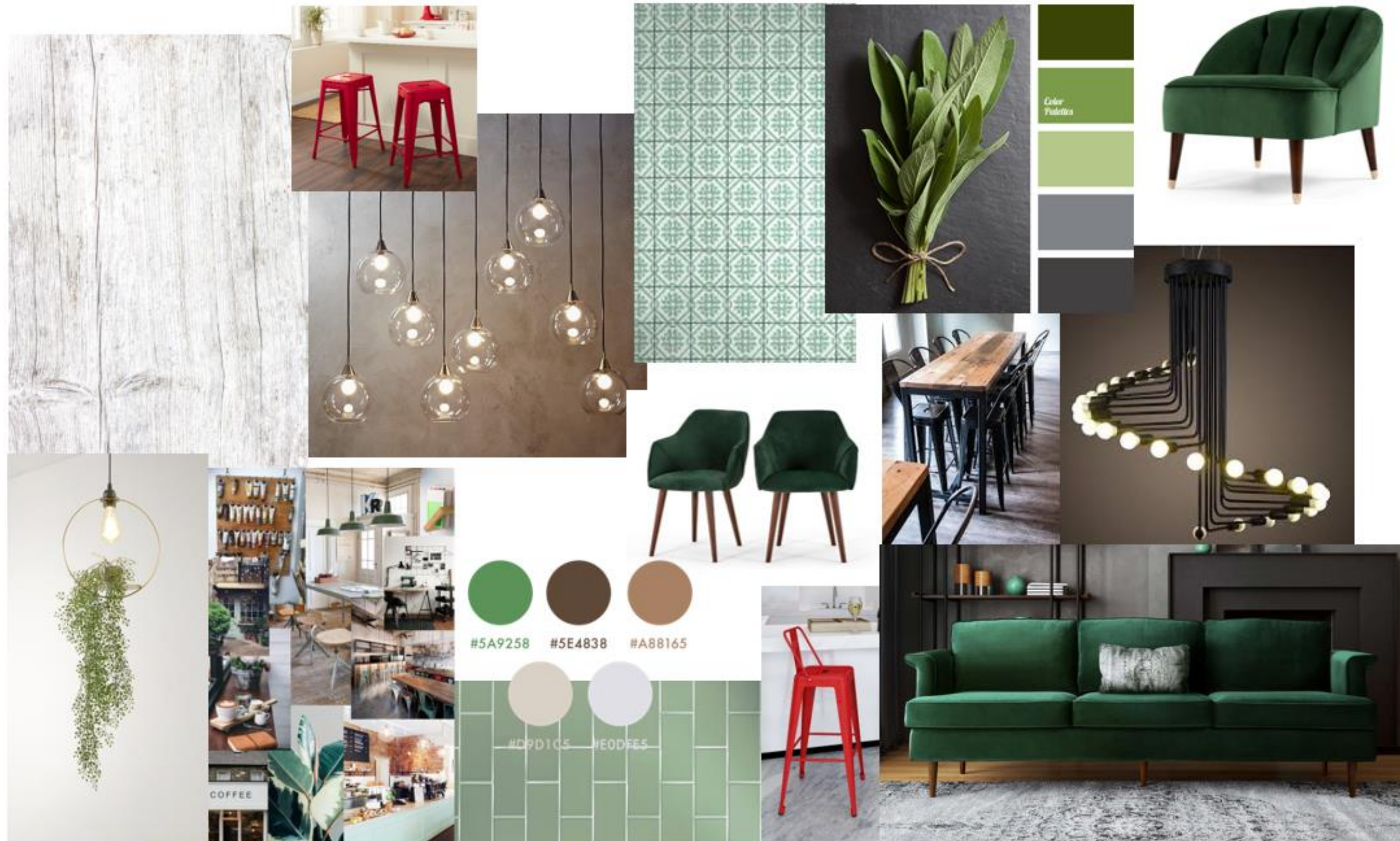
DESIGN CONCEPT

- The proposed color rationale is a complimentary color scheme for this space as well as using the natural colors found within and around tobacco and the process of drying the tobacco leaves as the inspiration for the color scheme within the coffee shop.
- The idea for the space is to create a relaxing and mellow environment for the costumers to experience within the space. By using different hues of green throughout the space, which is a very relaxing color, the café is able to achieve this relaxing environment.
- The pops of red throughout the space are important in keeping the costumers from getting drowsy within the space as well as adding a stimulating and colorful touch to the space.

COLOR RATIONALE



COLOR SCHEME



INSPIRATION IMAGES