

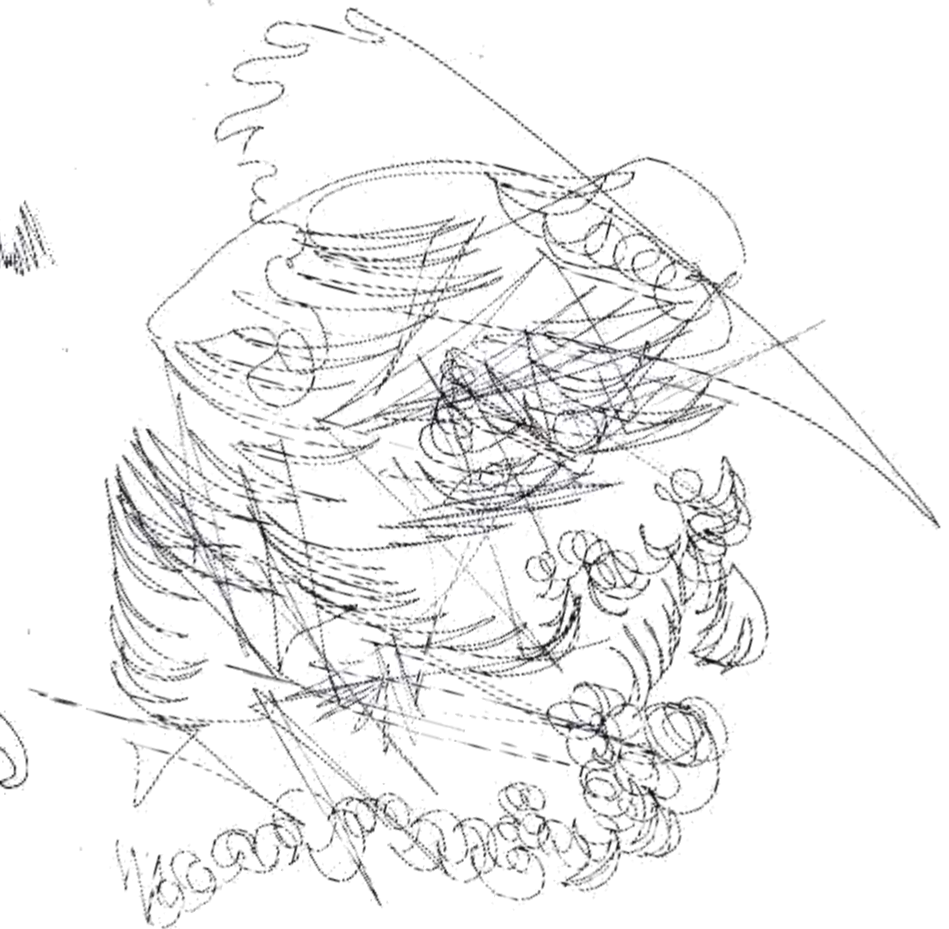


PORTIFOLIOTwo

Clara Rezk

IDSN 2102 - 001 FALL 2018

CHARLES GUSTINA



**MODELING
FOR
MUSIC
SKETCHES**





MODELING

FOR

MUSIC

MODEL





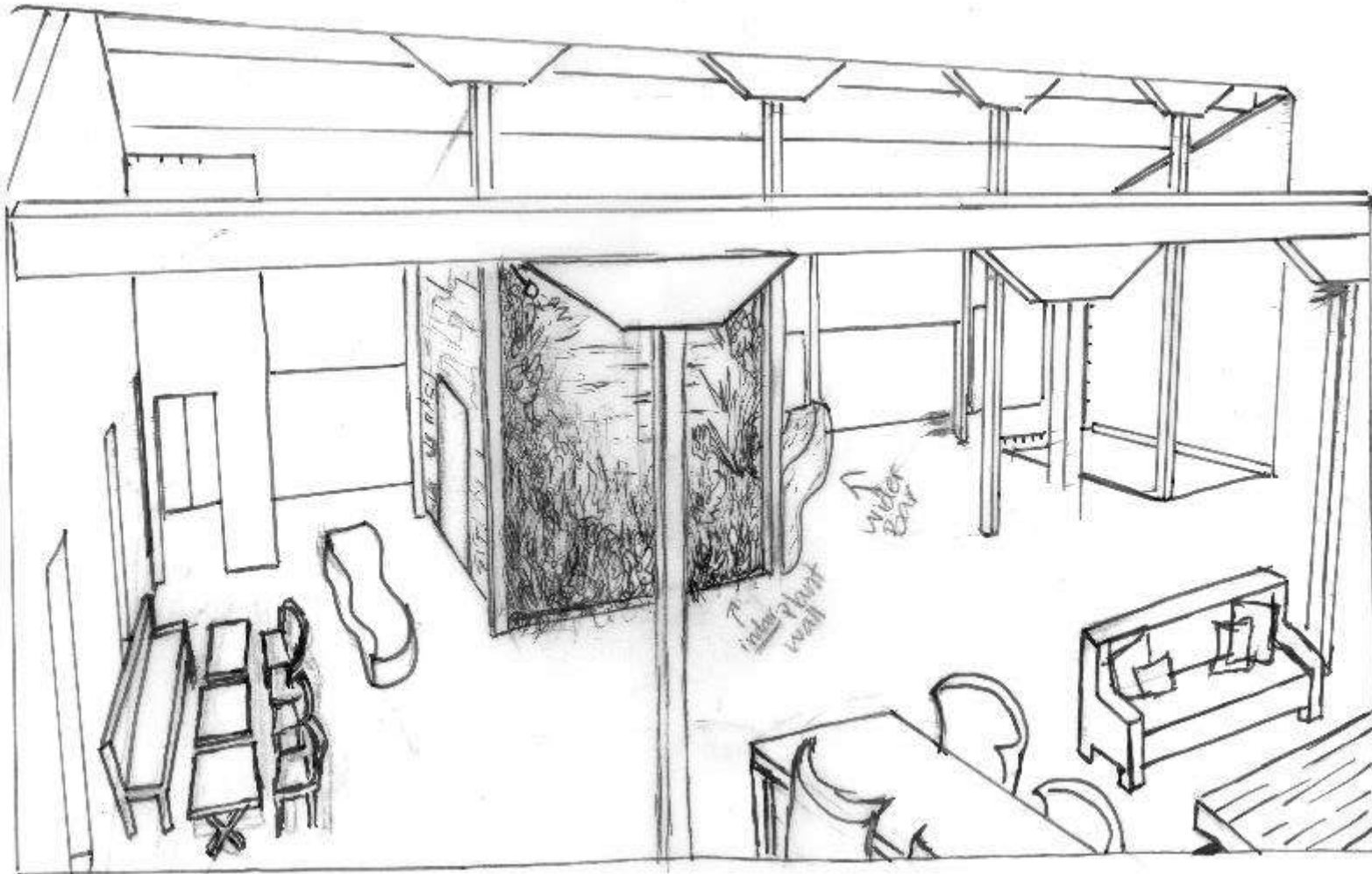
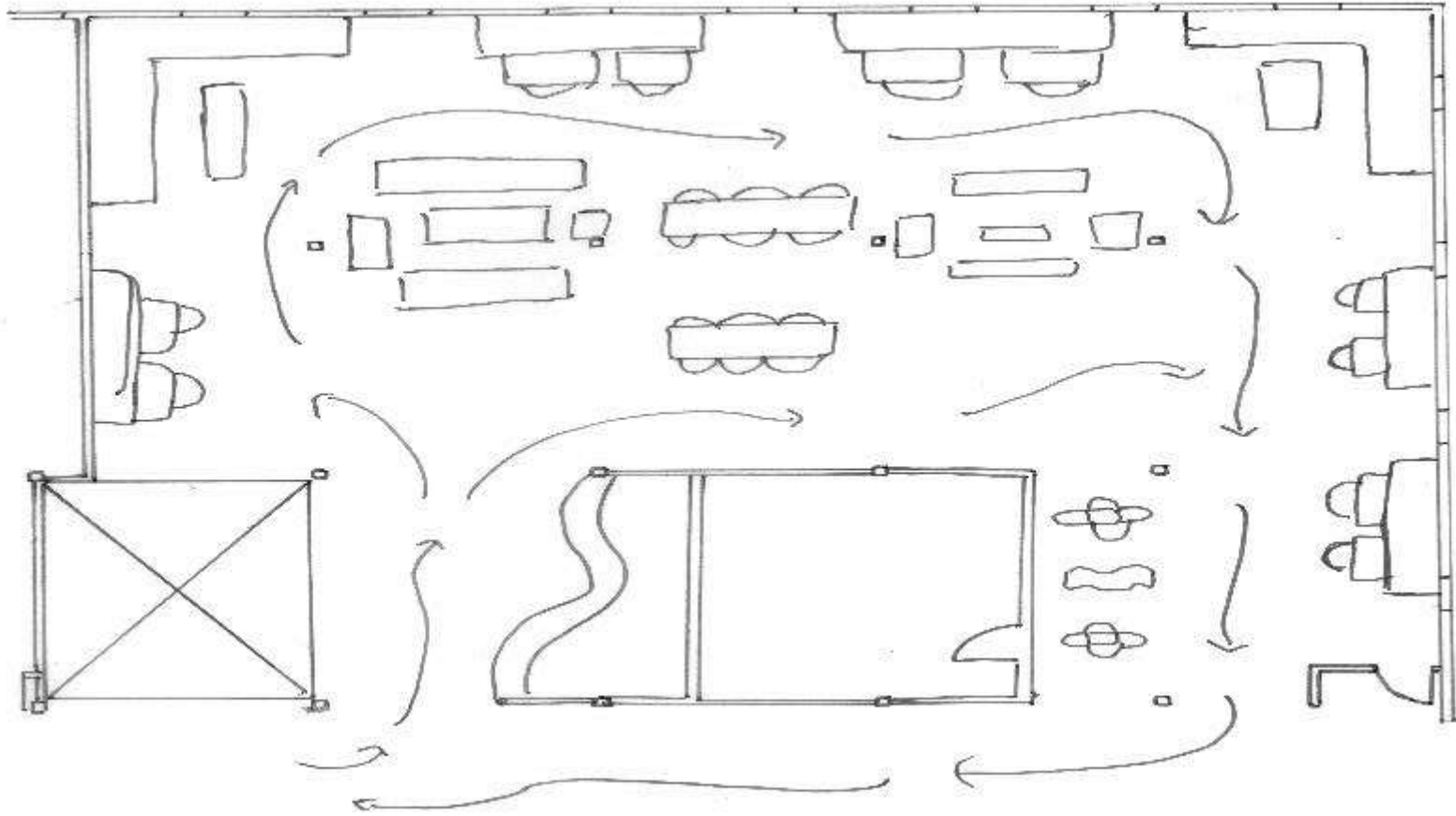
MODELING

FOR

MUSIC

MODEL

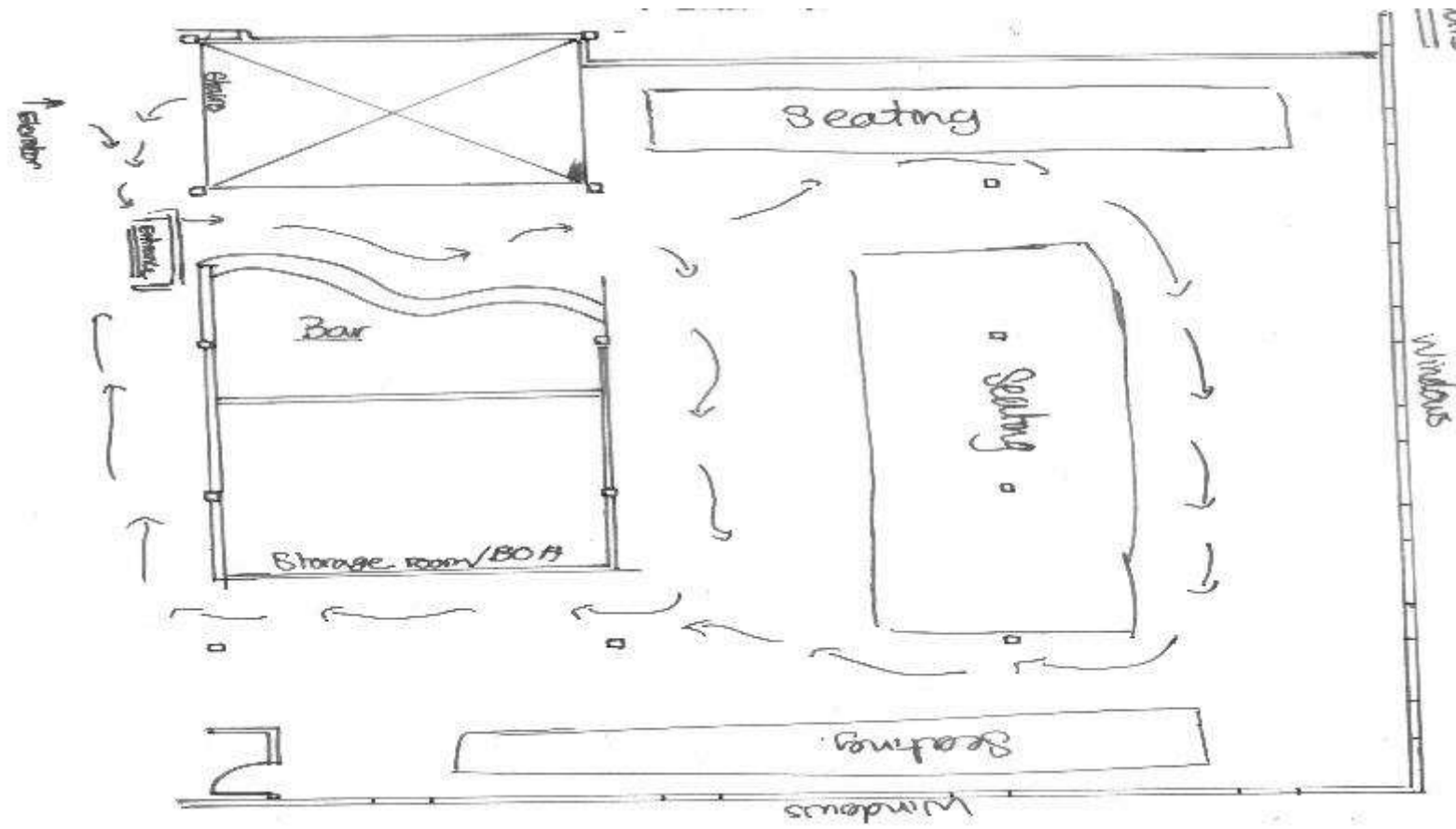




WAYFINDING

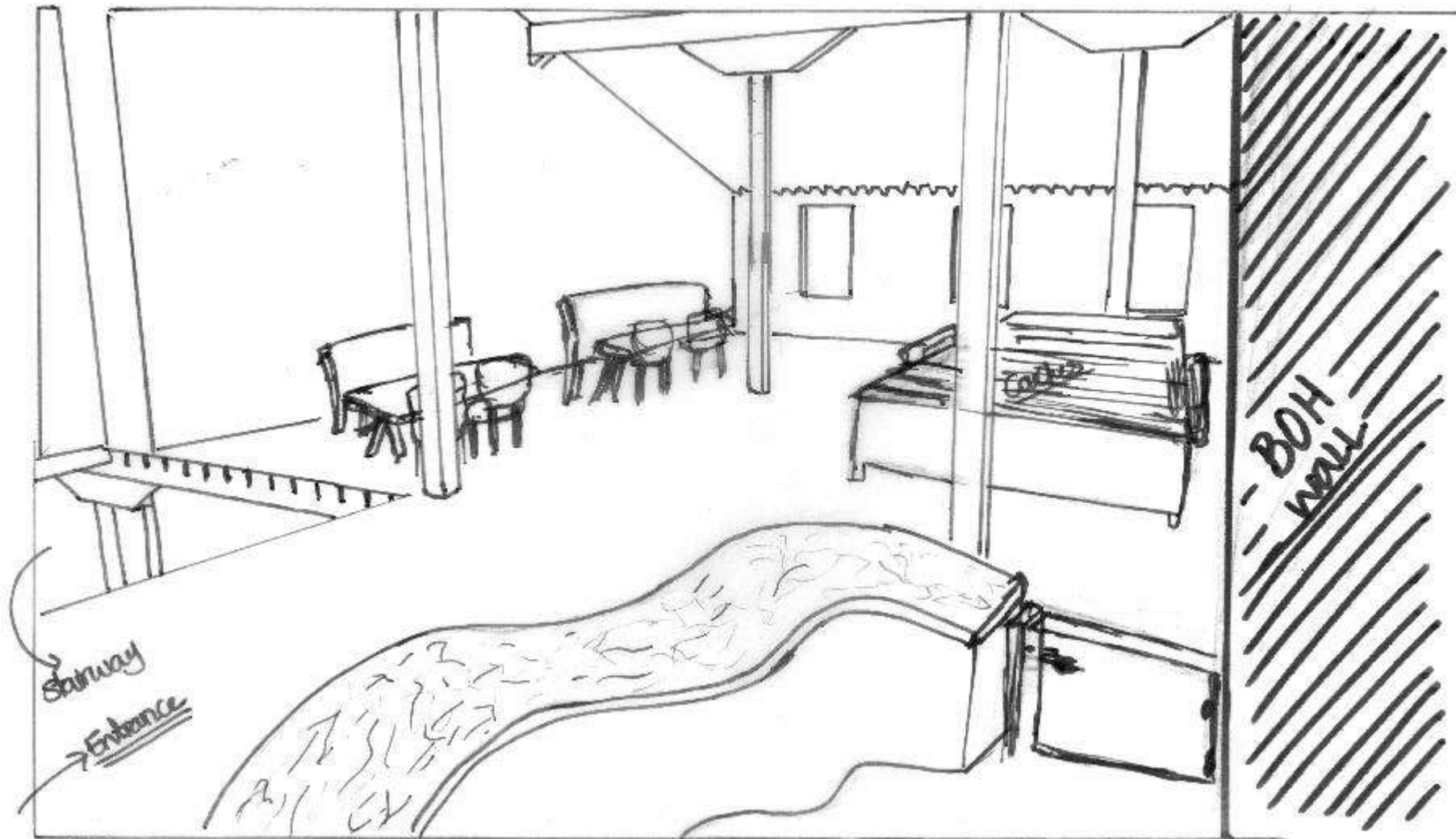
SKETCHES



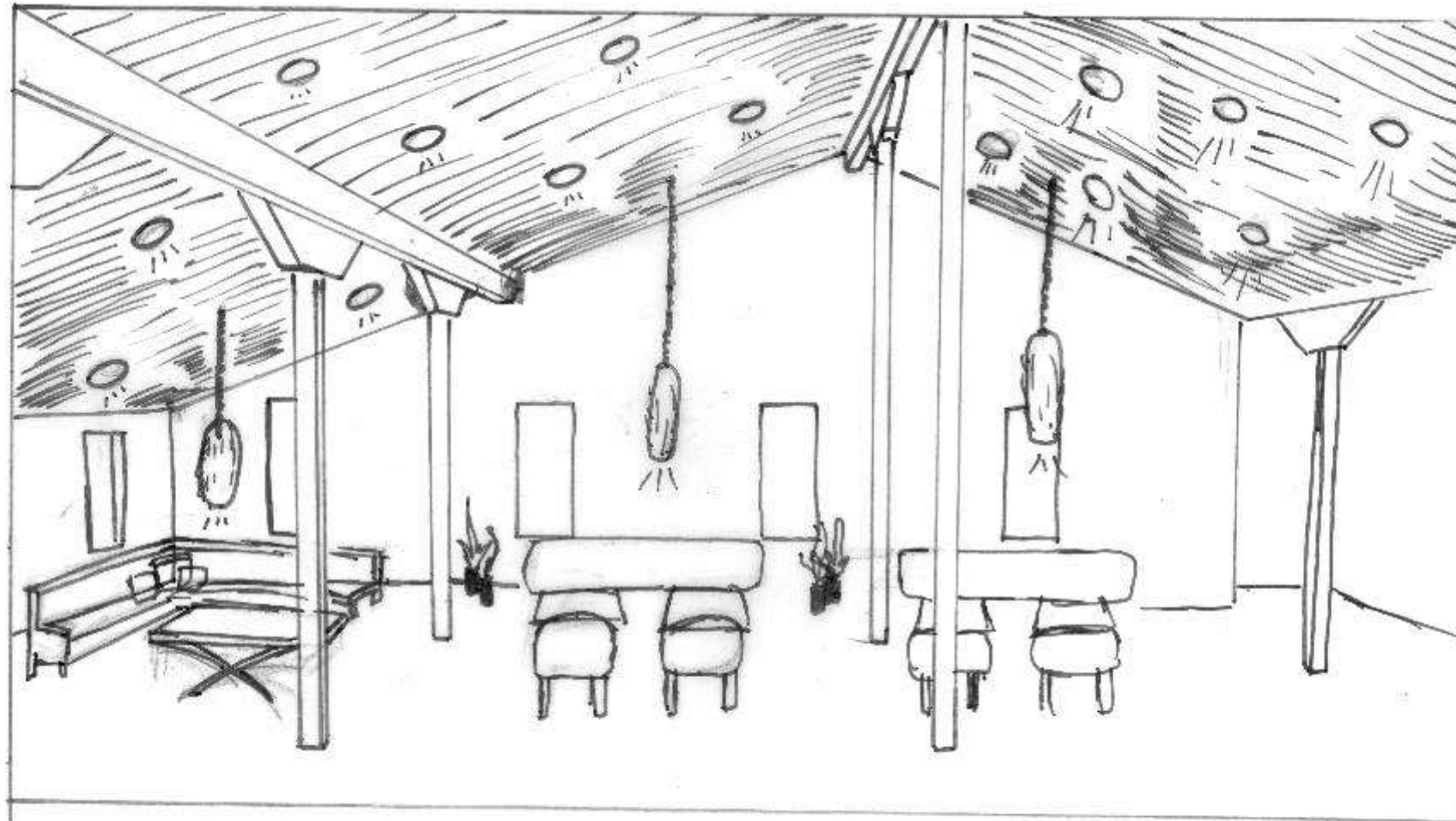
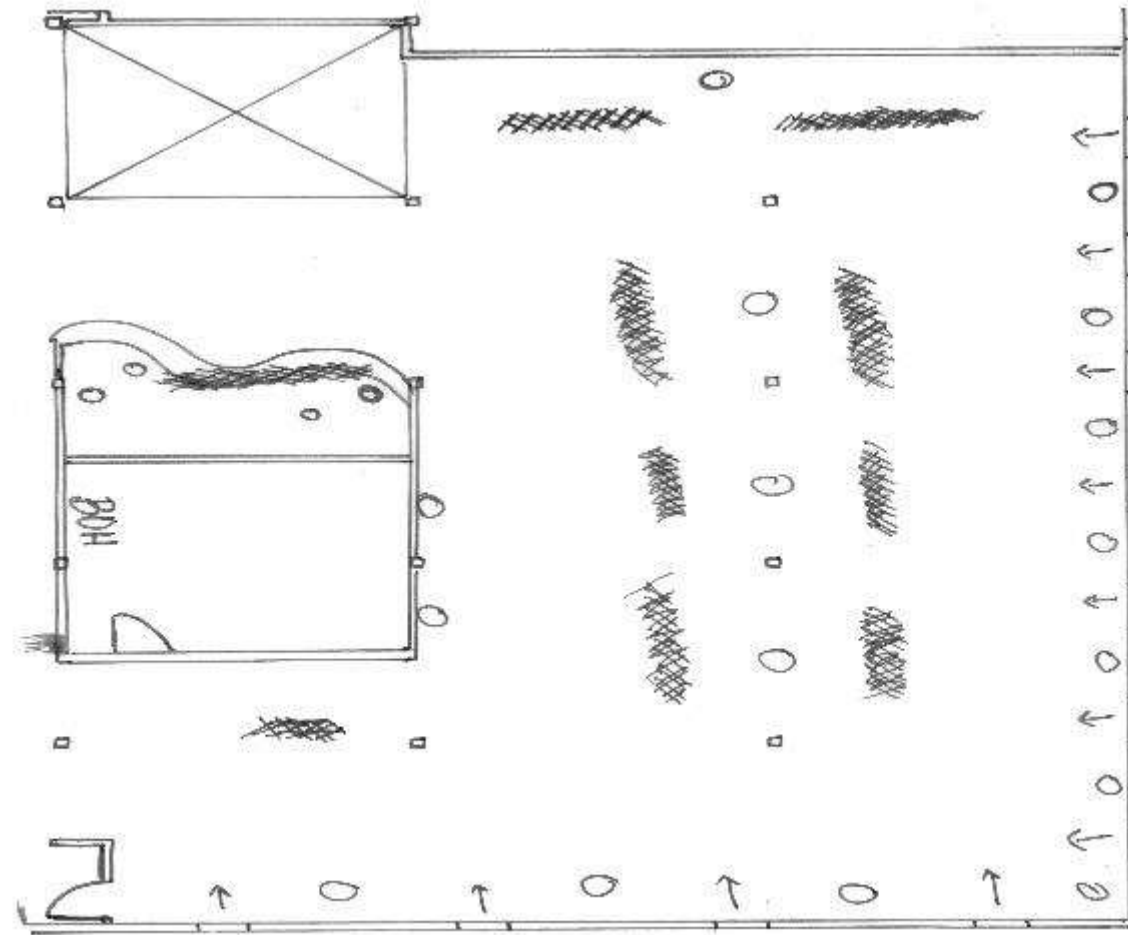


STAIR

SKETCHES



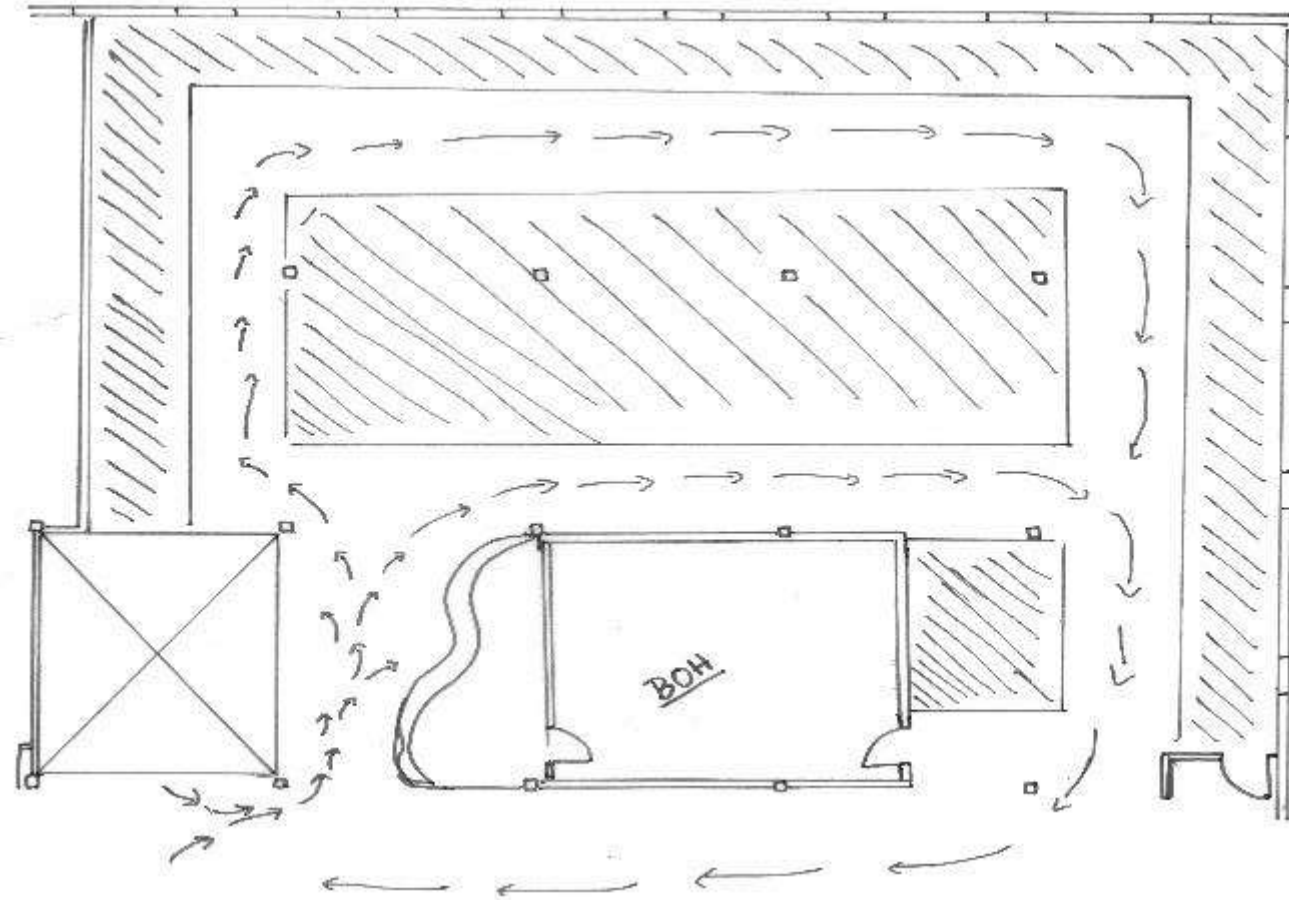
- Daylight
- ☼ Light Fixture
- Small Lighting



CEILING AND DAYLIGHT SKETCHES

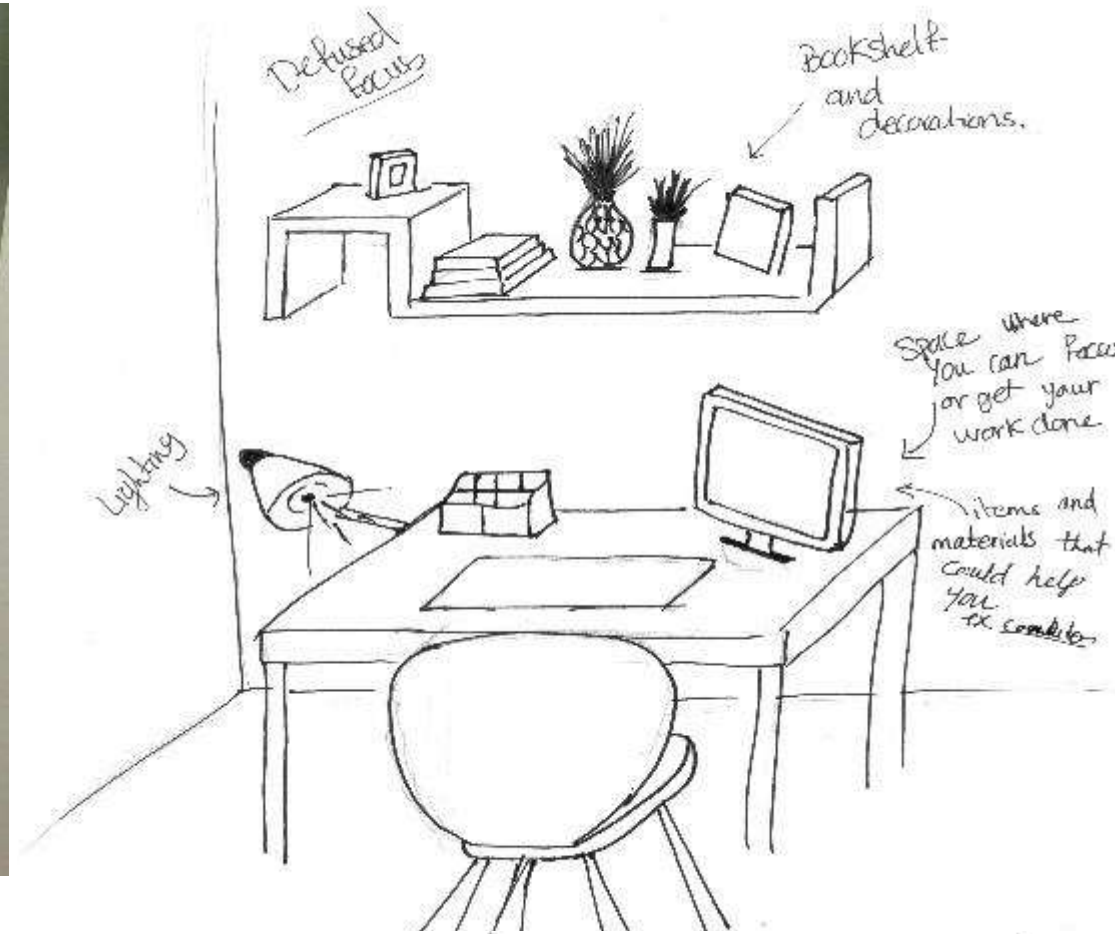


→ High traffic
→ Low traffic
/// Seating area



**BACK
OF THE
HOUSE
SKETCHES**



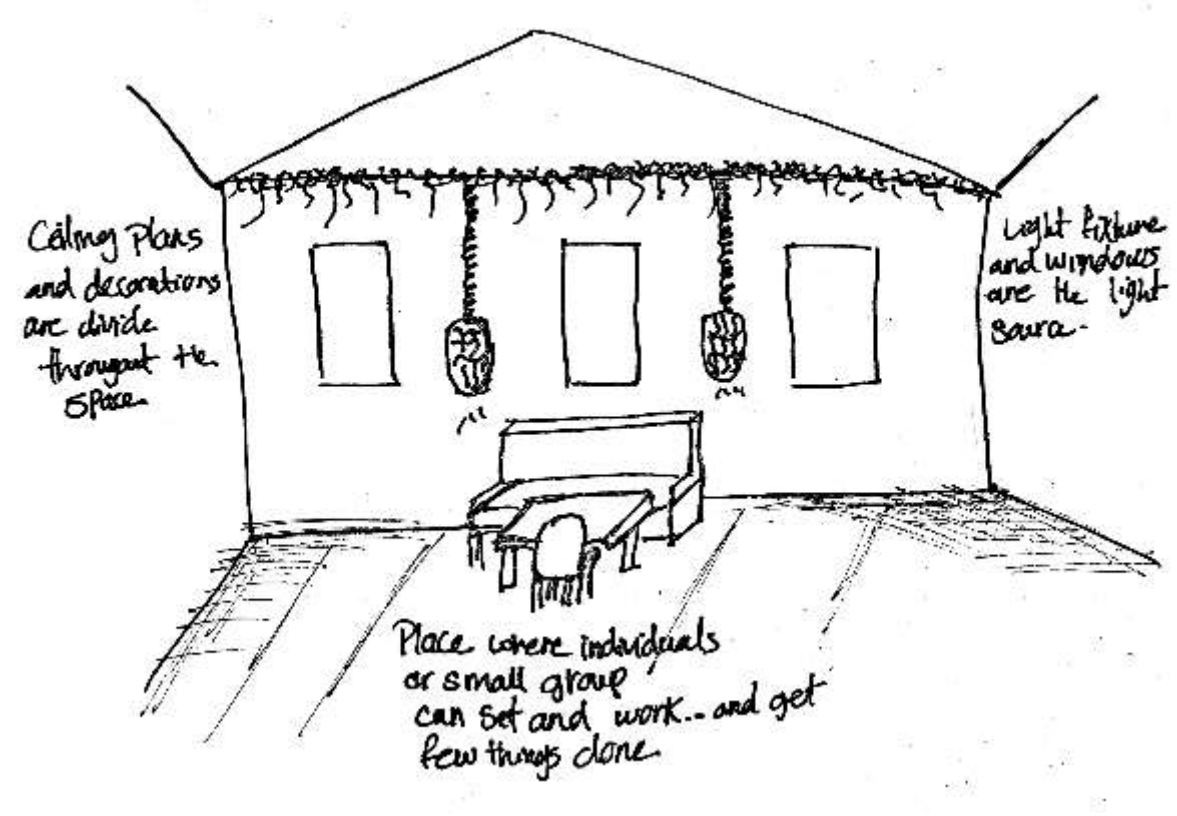
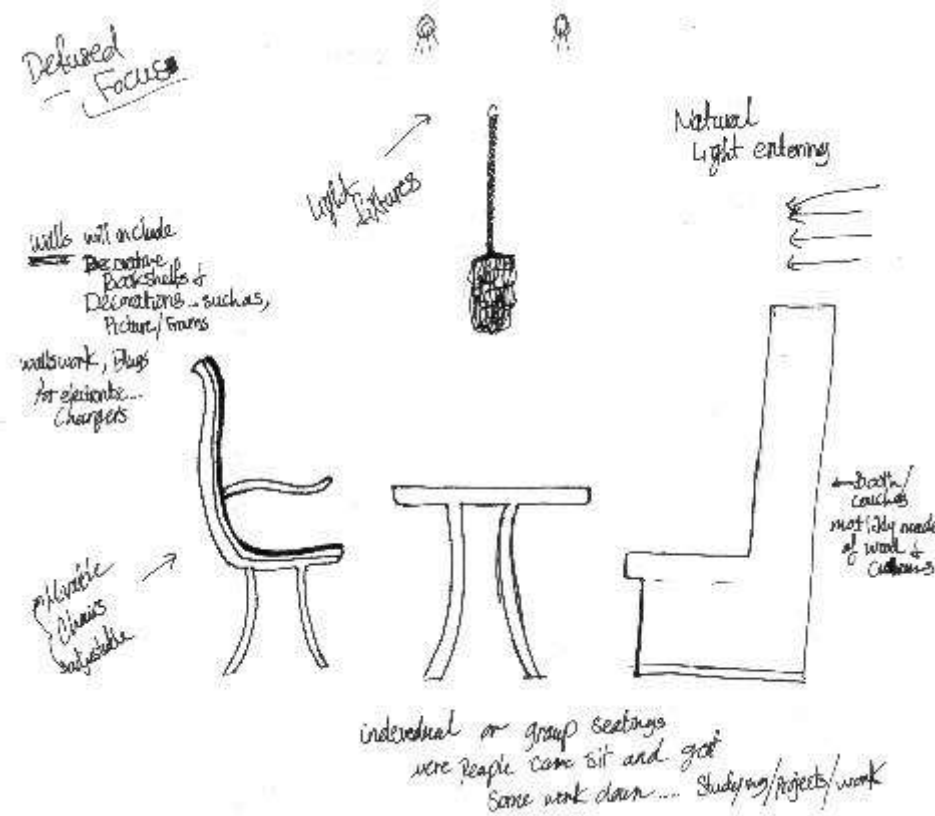


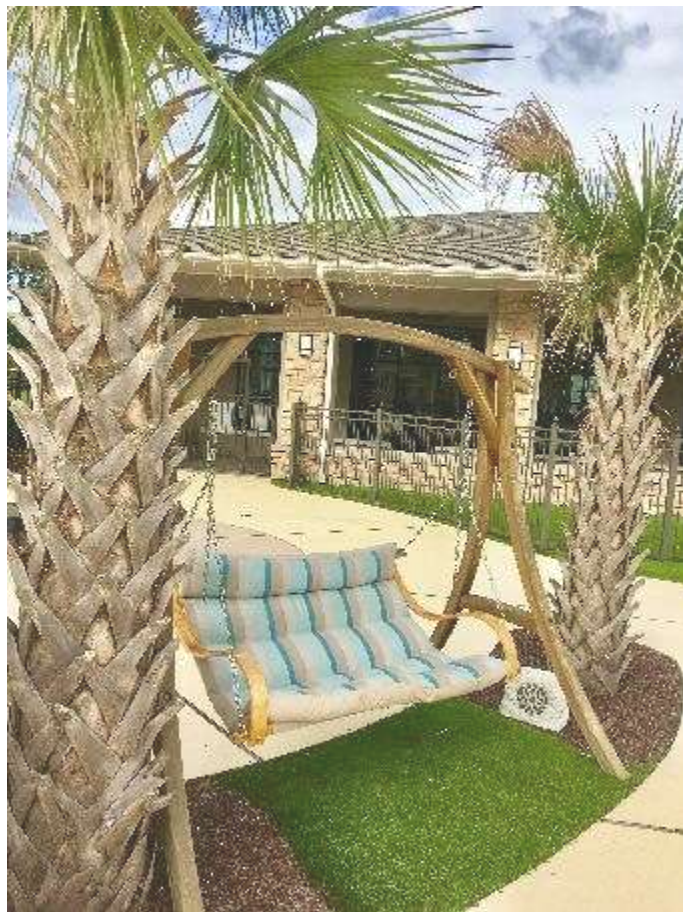
DIFFUSE

FOCUS

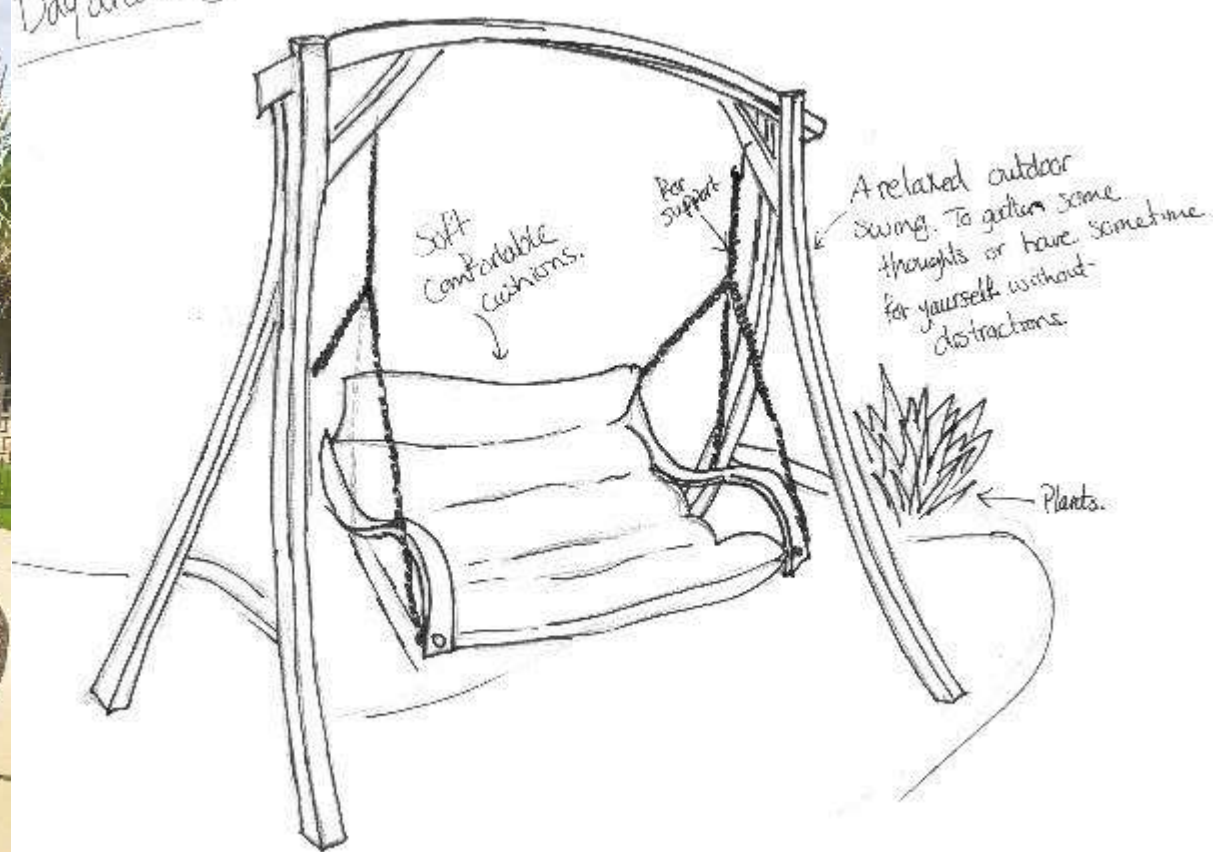
WORK

SKETCHES



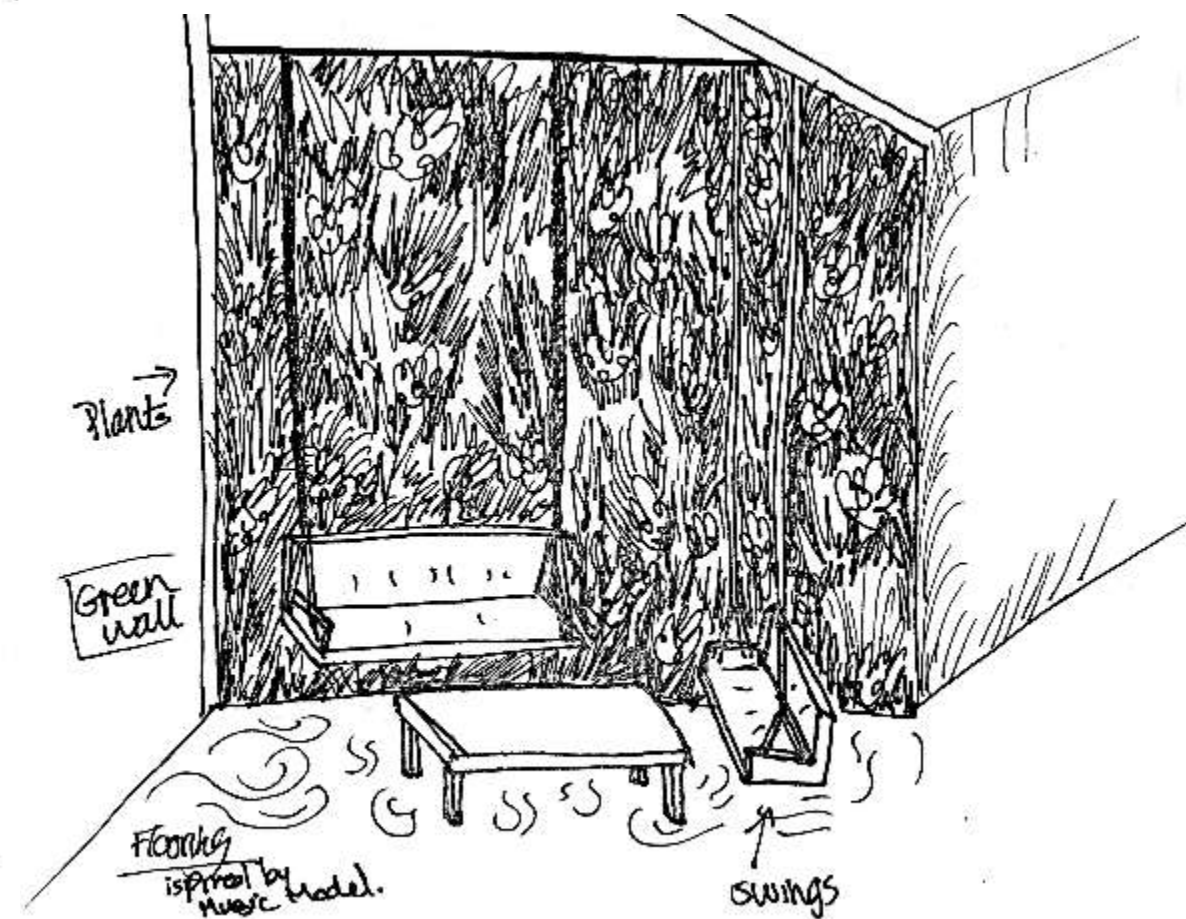
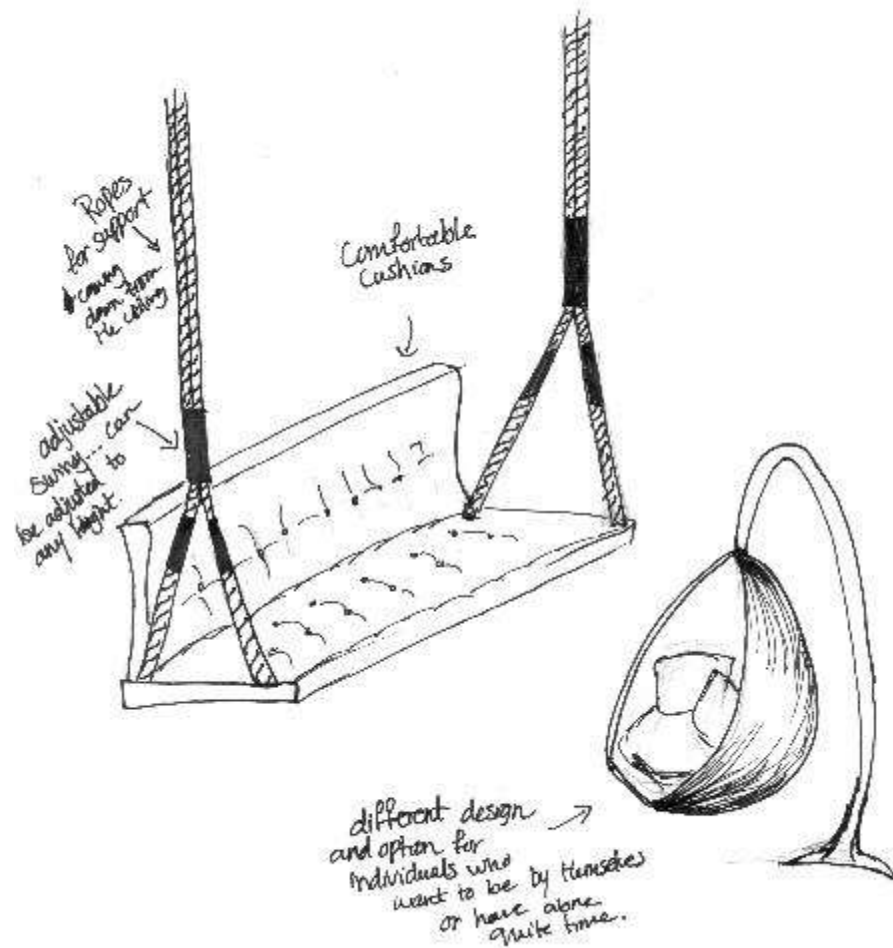


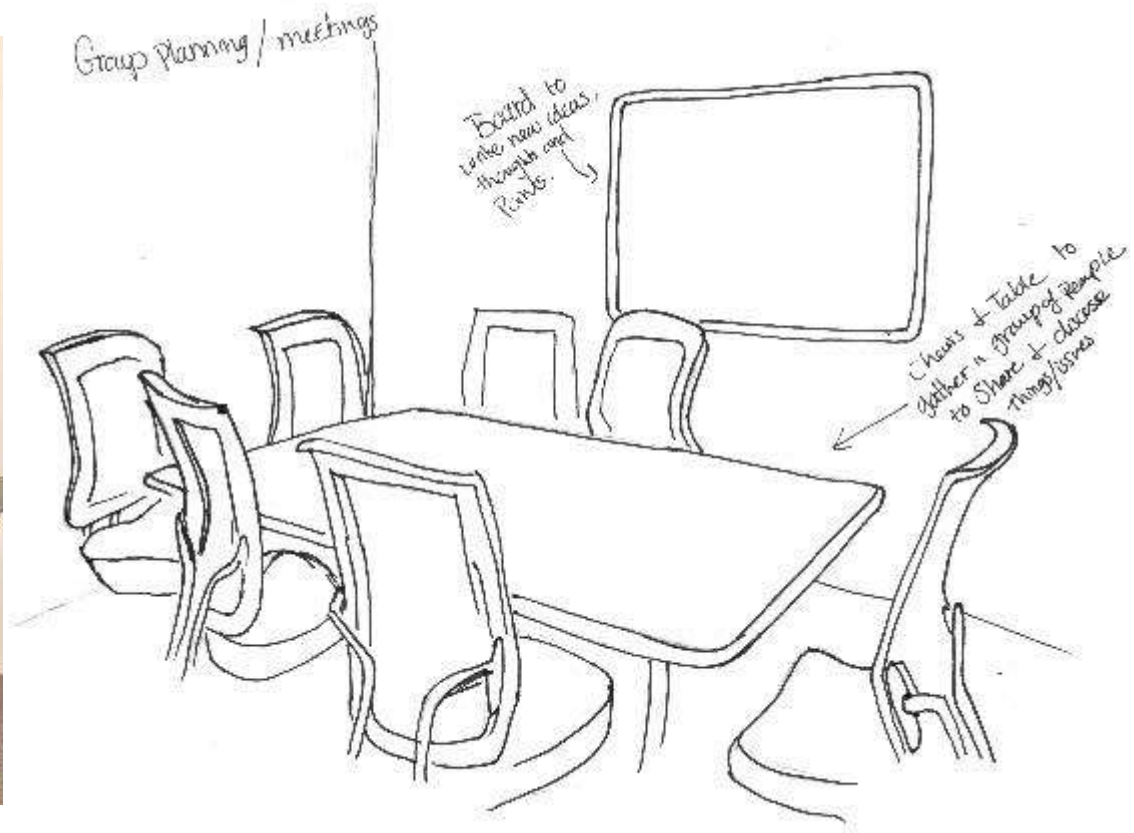
Day dreaming



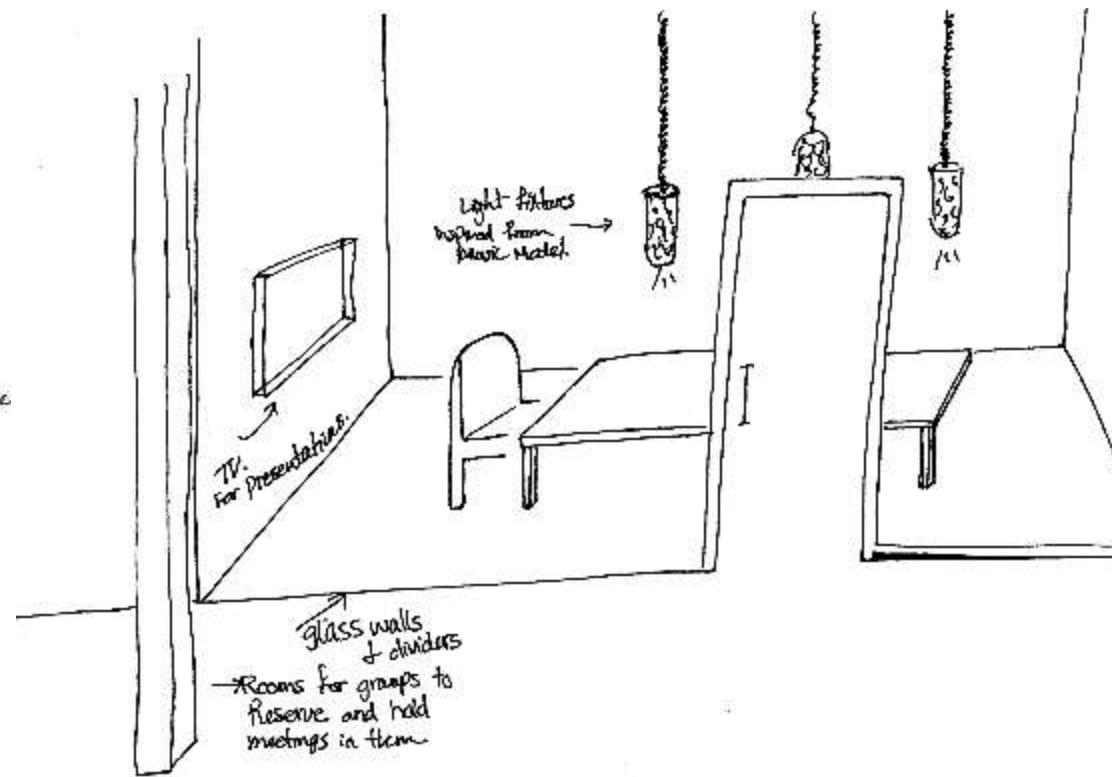
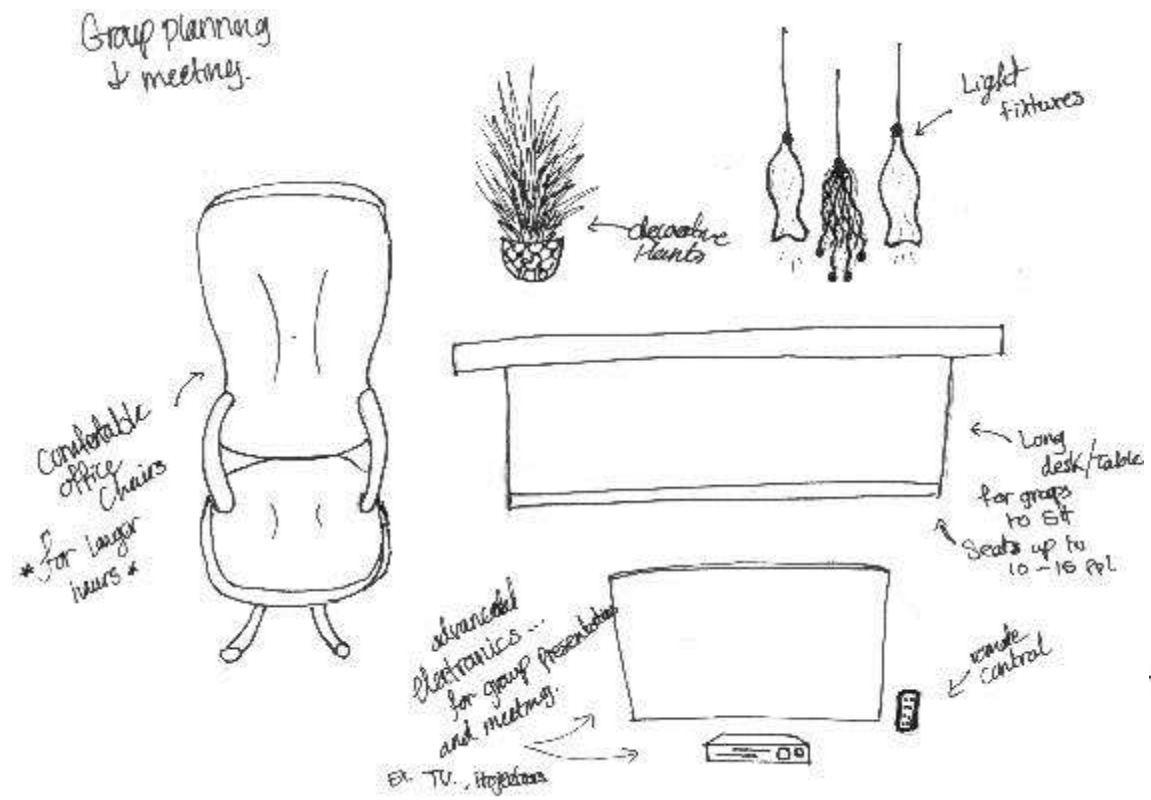
DAYDREAMING

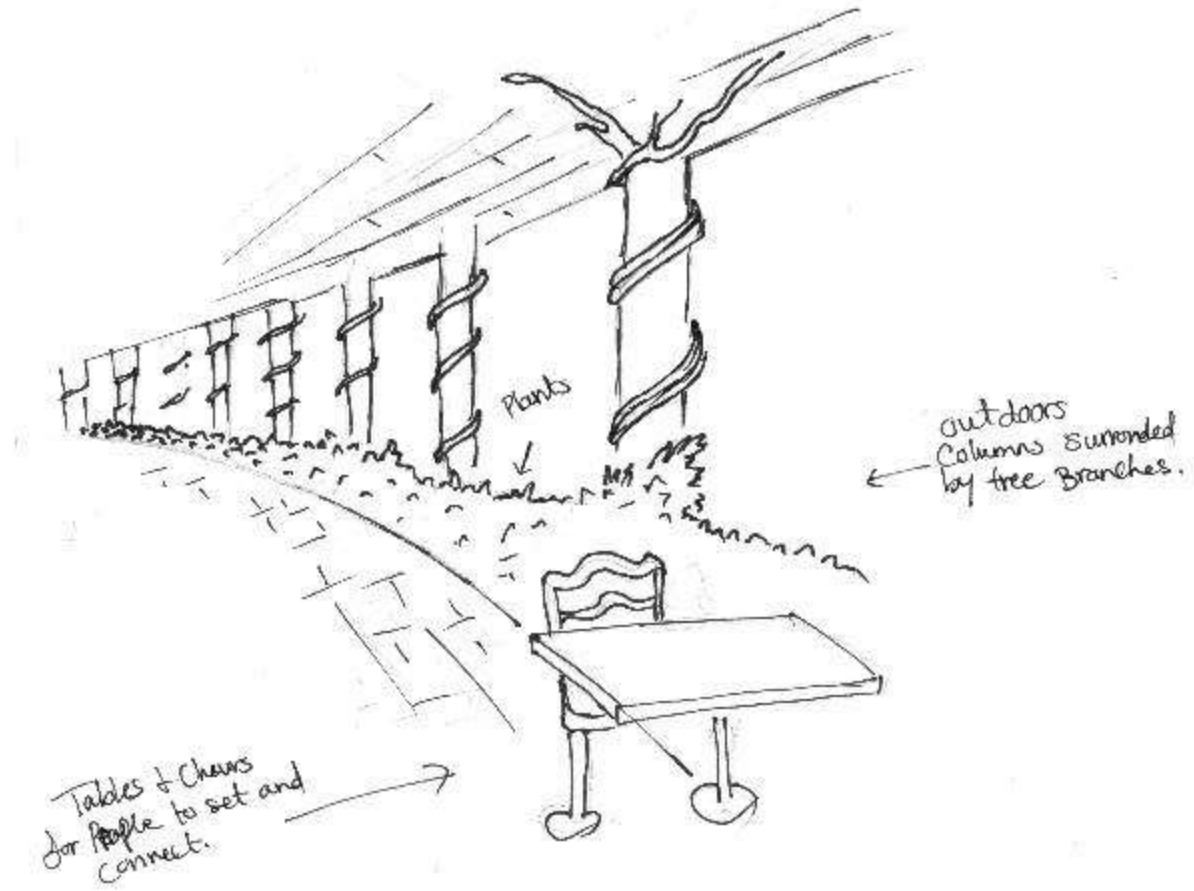
SKETCHES



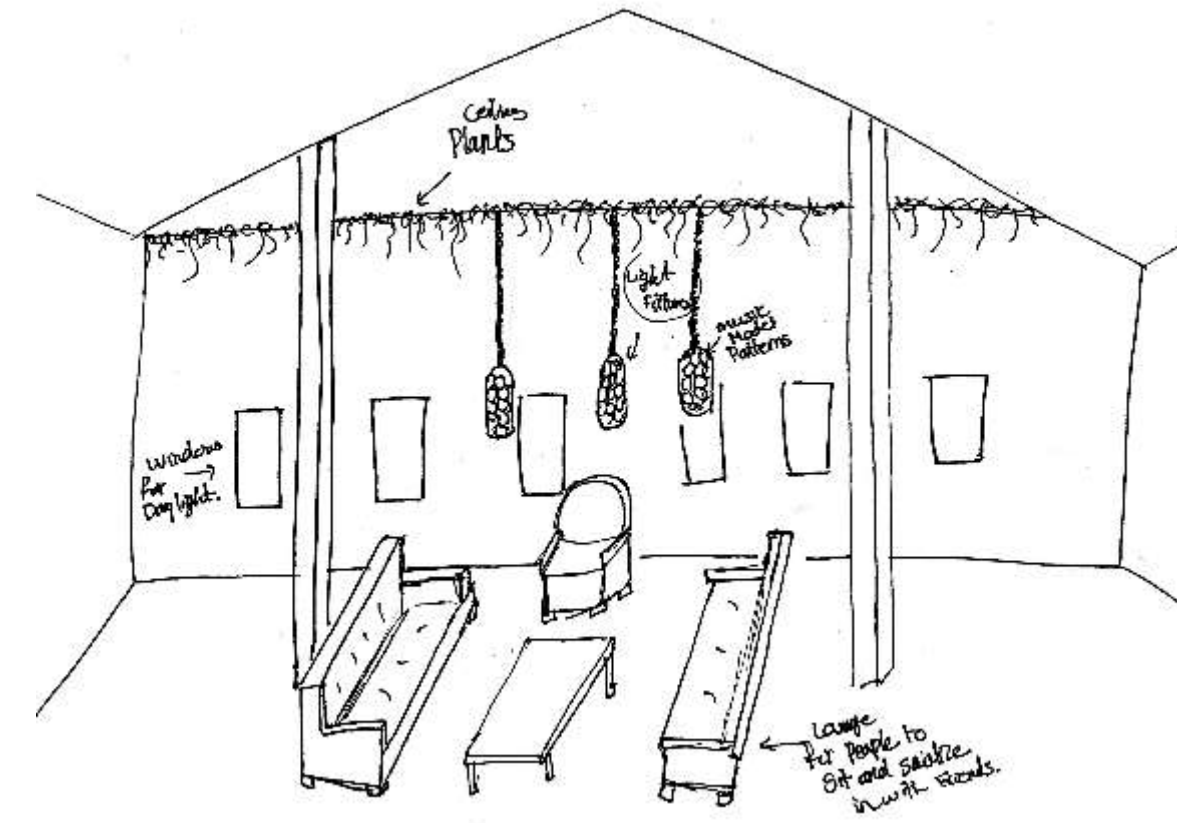
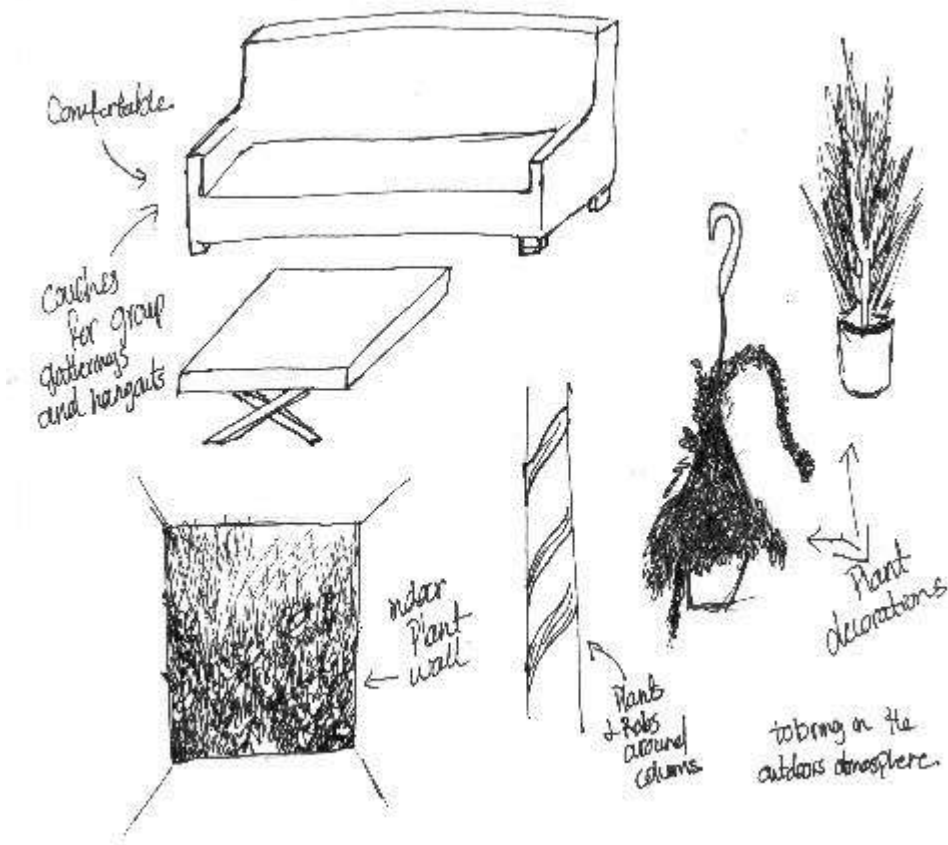


GROUP PLANNING/ MEETING SKETCHES





SOCIALIZING SKETCHES



NATURE FROM THE INSIDE

- INDOOR PLANTS WILL HELP IMPROVE THE QUALITY OF AIR, UPLIFT POSITIVE MOODS AND ENHANCE CREATIVE THINKING.
- AN EMPHASIS IN THIS SPACE WILL BE PLANT LIFE. THE GREEN COLORS WILL BE INCORPORATED THROUGH PLANTS AND DÉCOR.
- THE SPACE IS FOCUSED ON CALMING THE CLIENTS AND REDUCING THEIR STRESS USING INDOOR PLANTS.



CONCEPT



COLOR SCHEME

- THE COLOR SCHEME FOR THIS THIRD SPACE WILL INCLUDE COLORS FOUND IN THE WOODS SUCH AS, LIGHT BROWN, BLACK, WHITE AND VARIOUS SHADES OF GREEN.
- THIS PALETTE WAS CHOSEN TO ENHANCE THE SPACE AND WORK WITH THE LARGE AMOUNTS OF NATURAL LIGHT THAT WILL COME IN THROUGH THE WINDOWS.
- WHITE WALLS WILL ALLOW LIGHTING TO FLOW THROUGH THE SPACE.



COLOR

RATIONALE

