

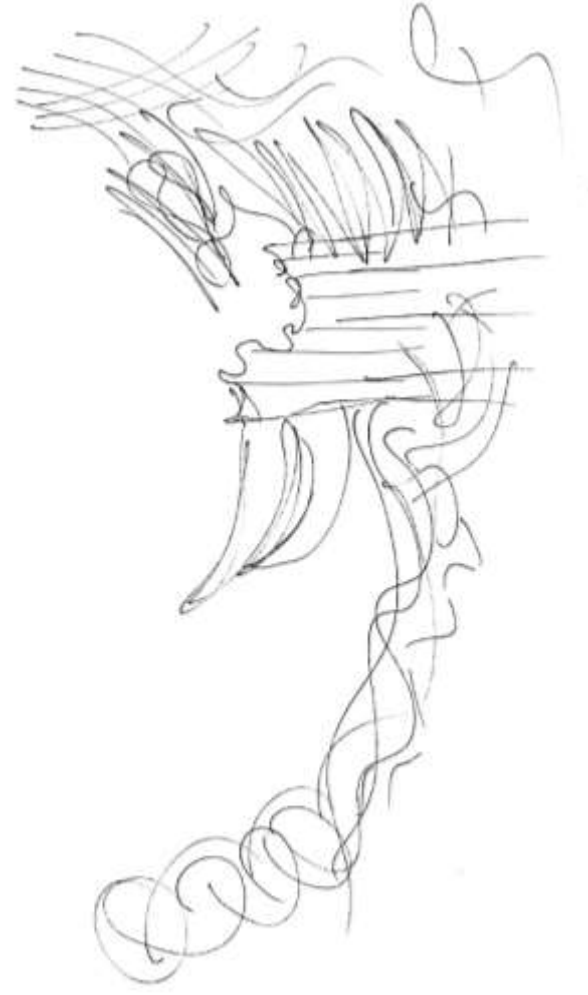
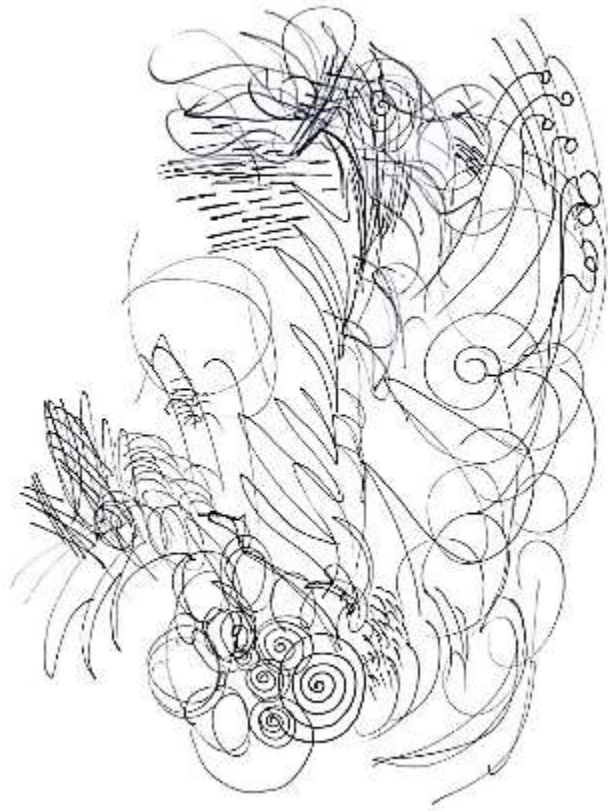
PORTFOLIO 2

IDSN 2012-001

Fall 2018

Karen Sandoval

Drawing to Music



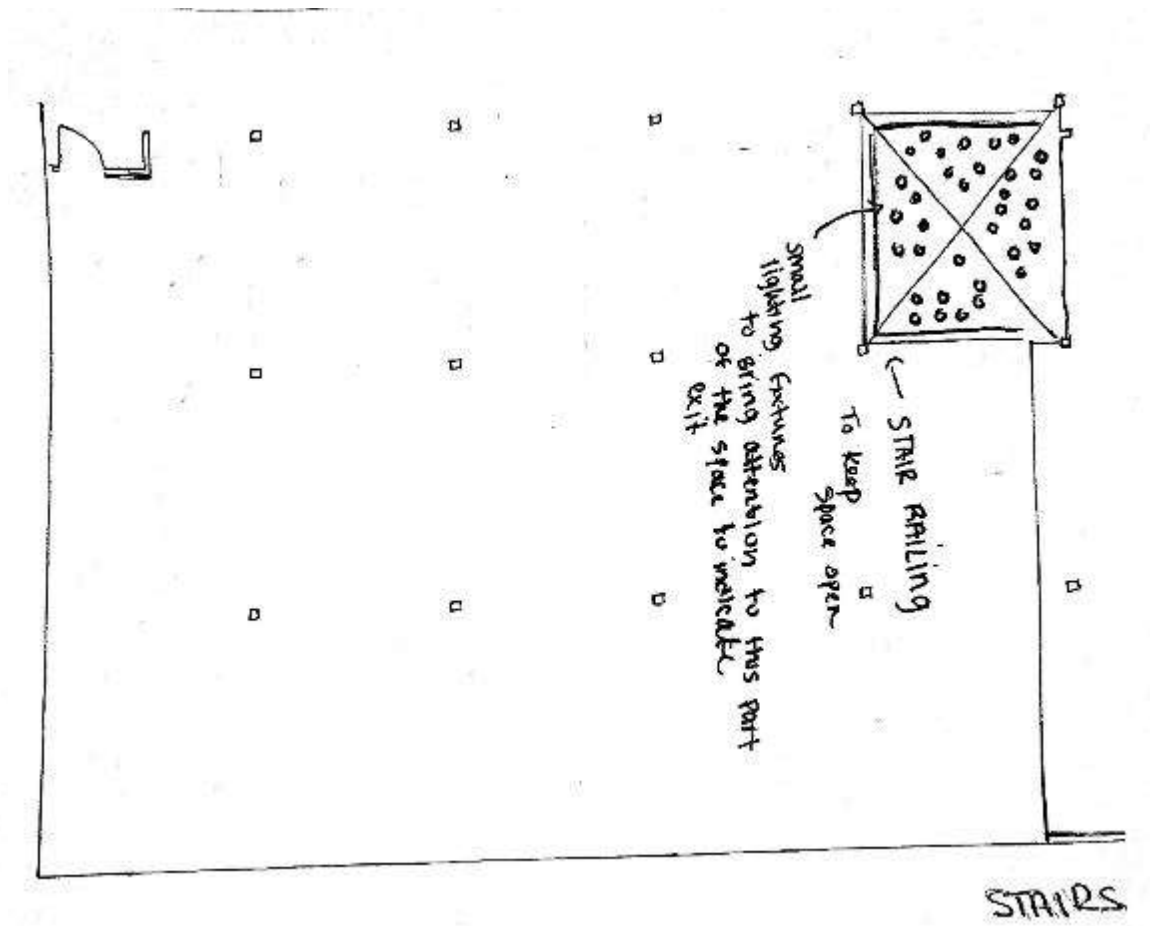
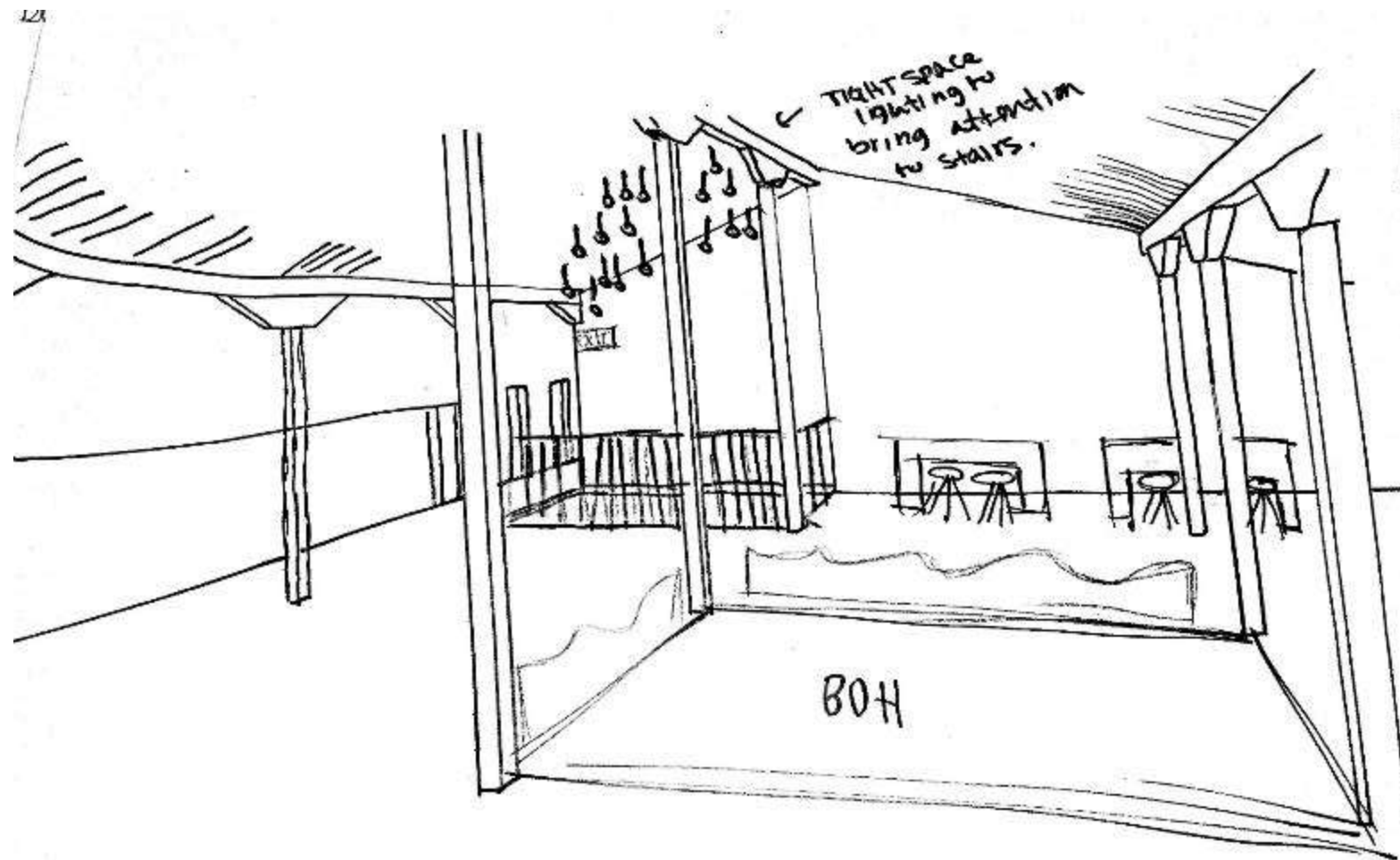
Modeling to Music



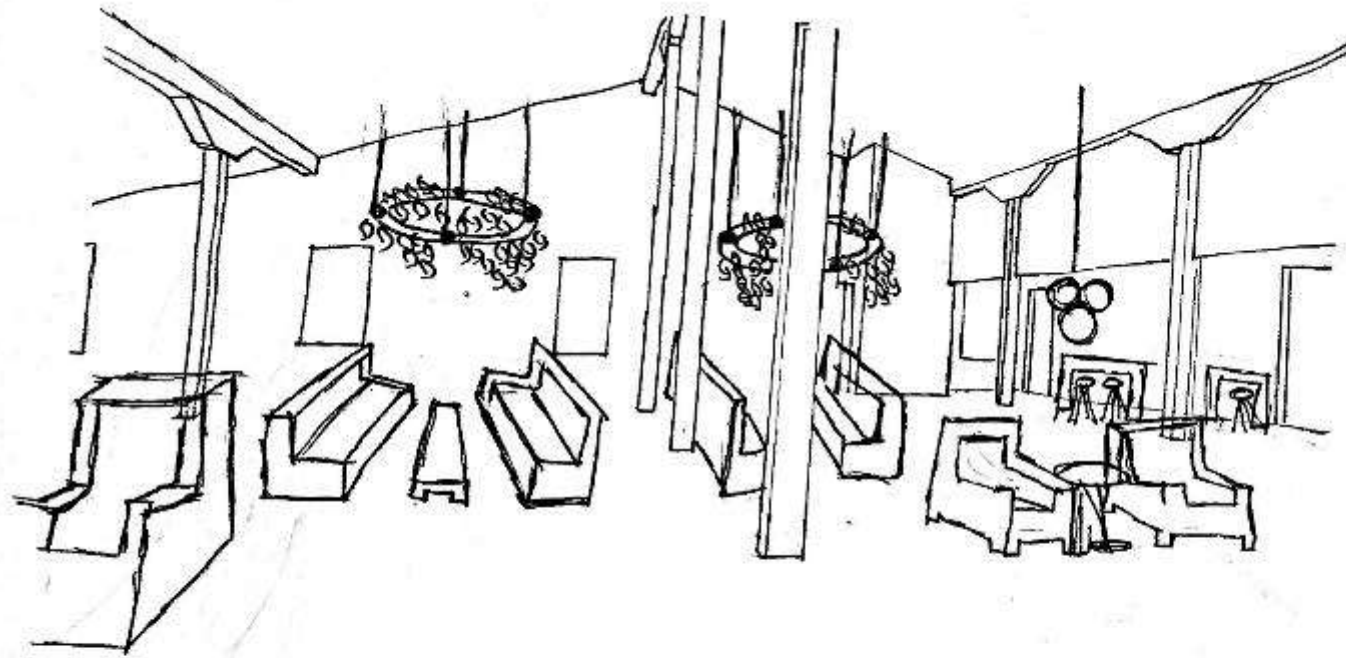
Modeling to Music



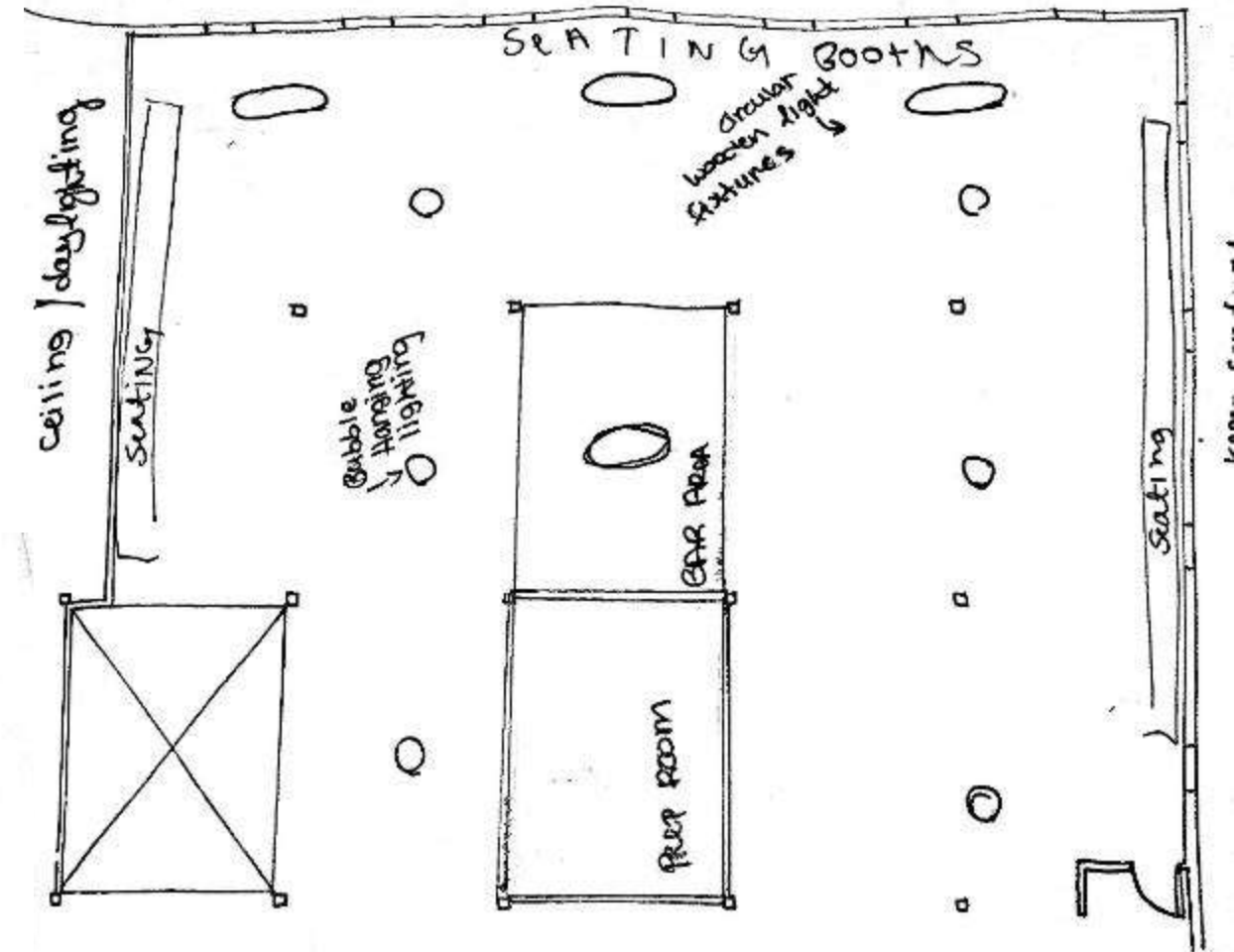
Problem Resolution Sketches Stairs



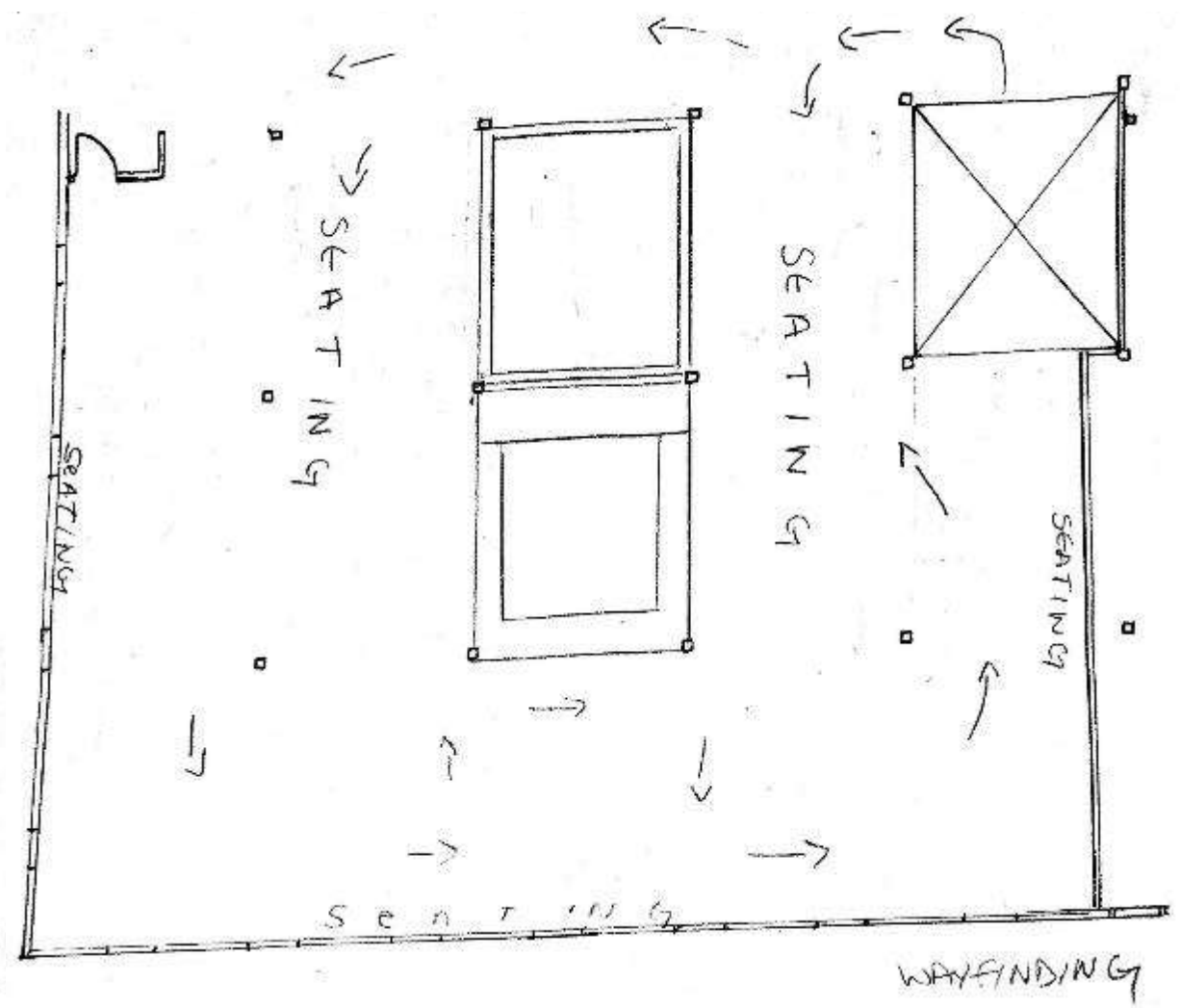
Problem Resolution Sketches Ceiling/Lighting



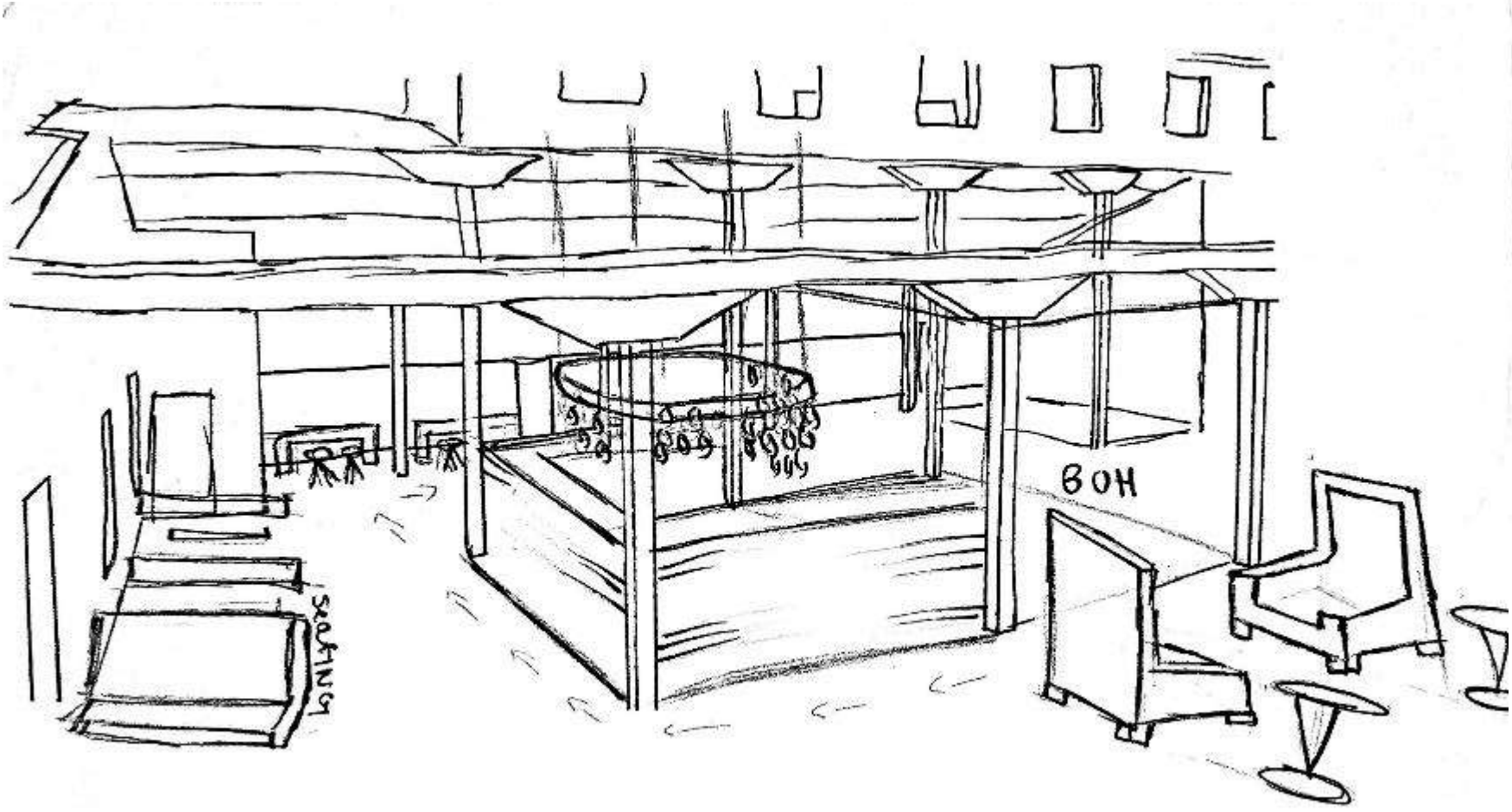
- light bouncing off white walls
 - open/dirty feel • rustic features
 - circular wooden light fixtures to bring down ceiling height
 - visible lighting through out space
- ceiling/daylighting
noise cancelling



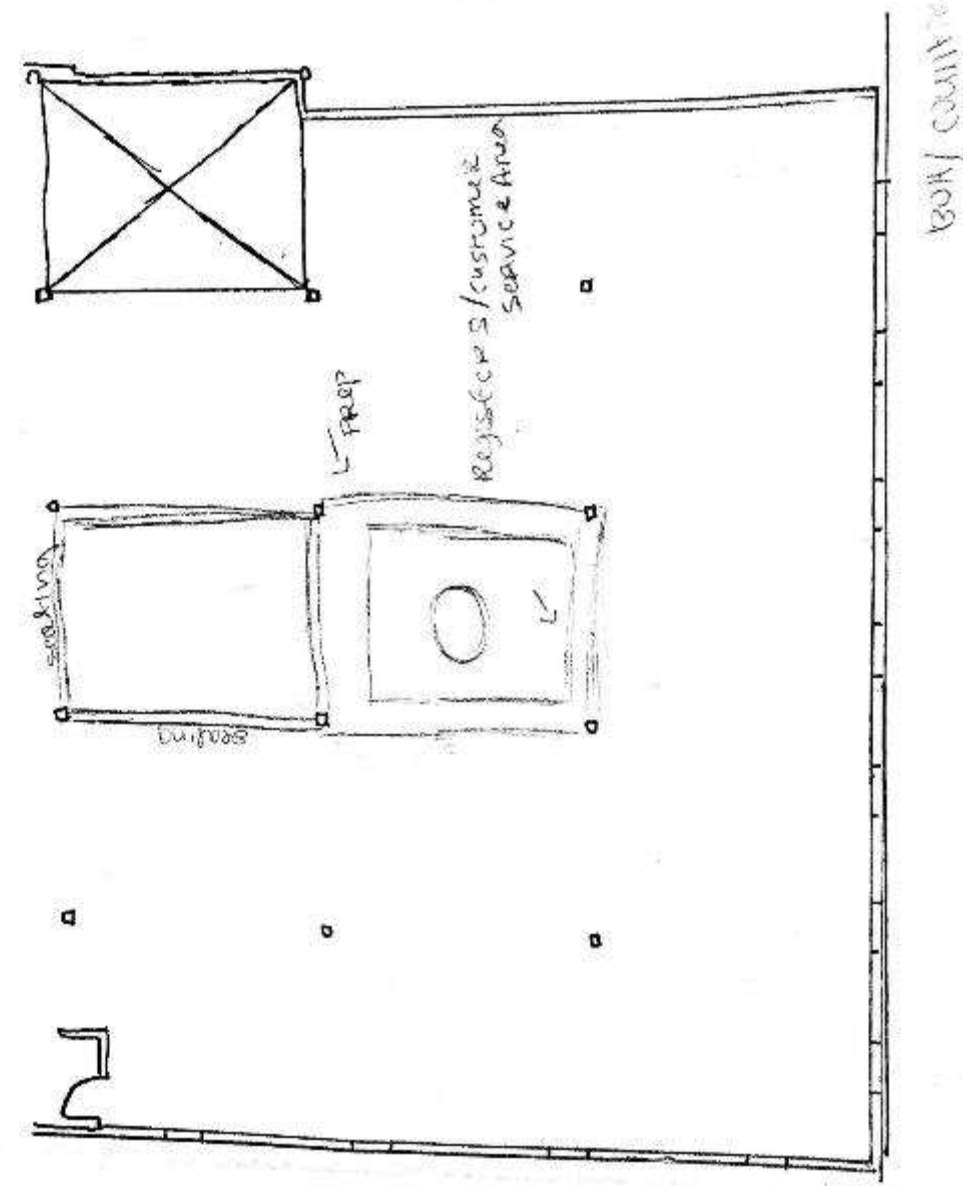
Problem Resolution Sketches Wayfinding



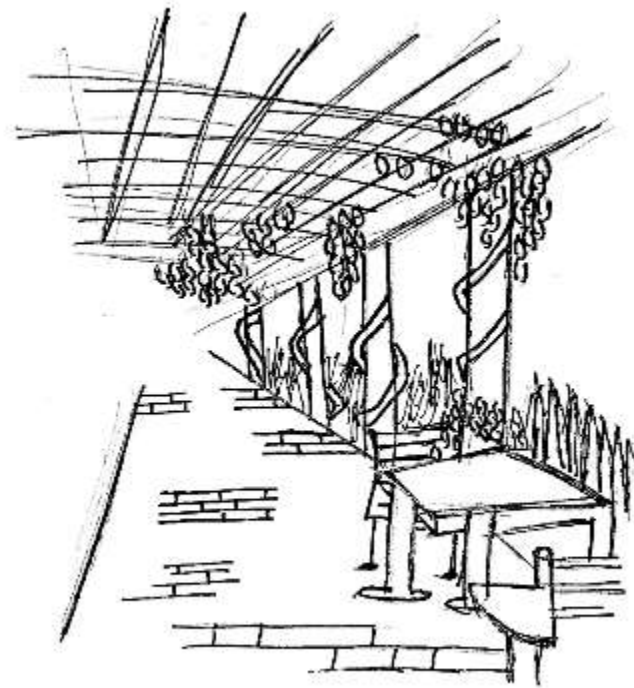
Problem Resolution Sketches Back Of House



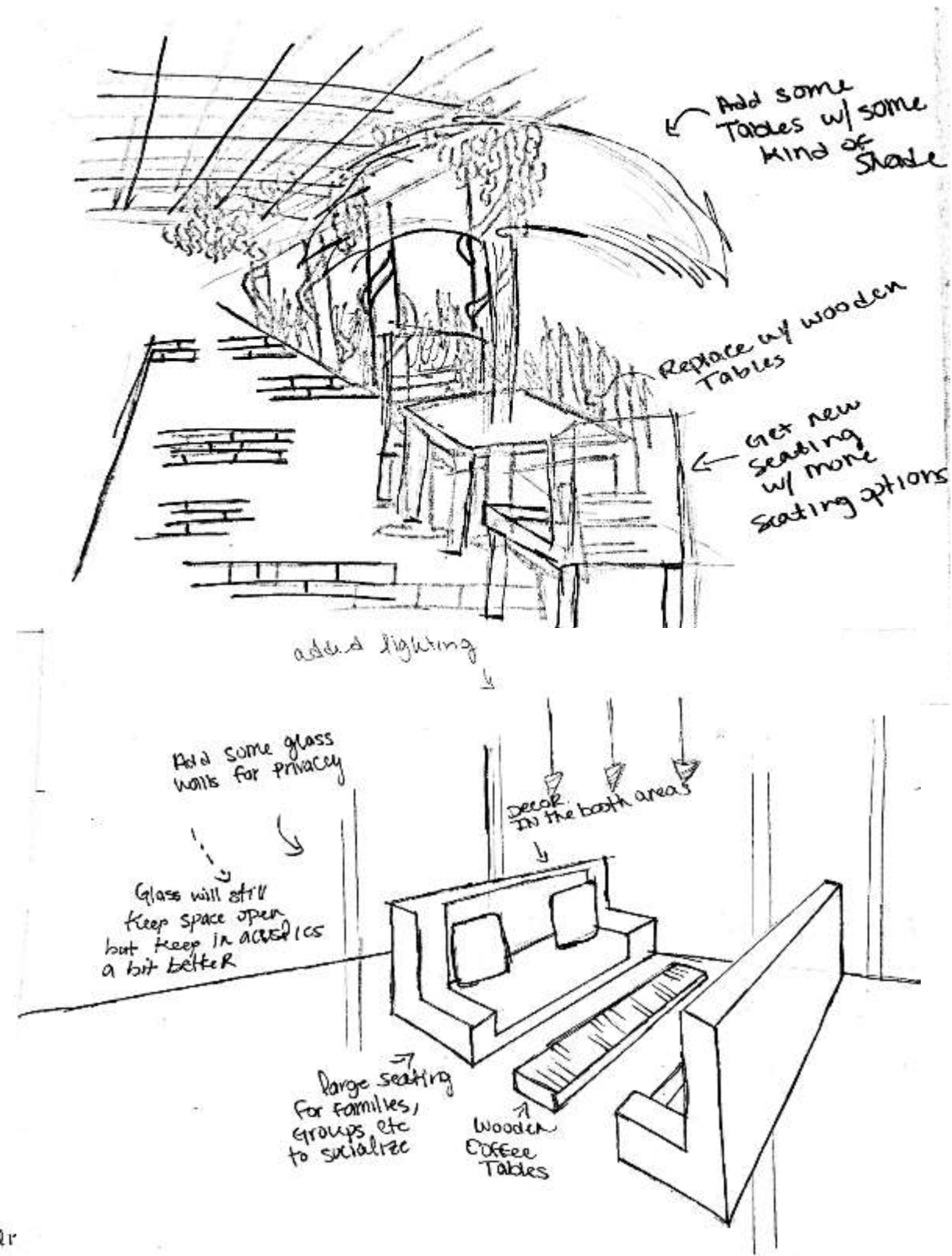
back of House



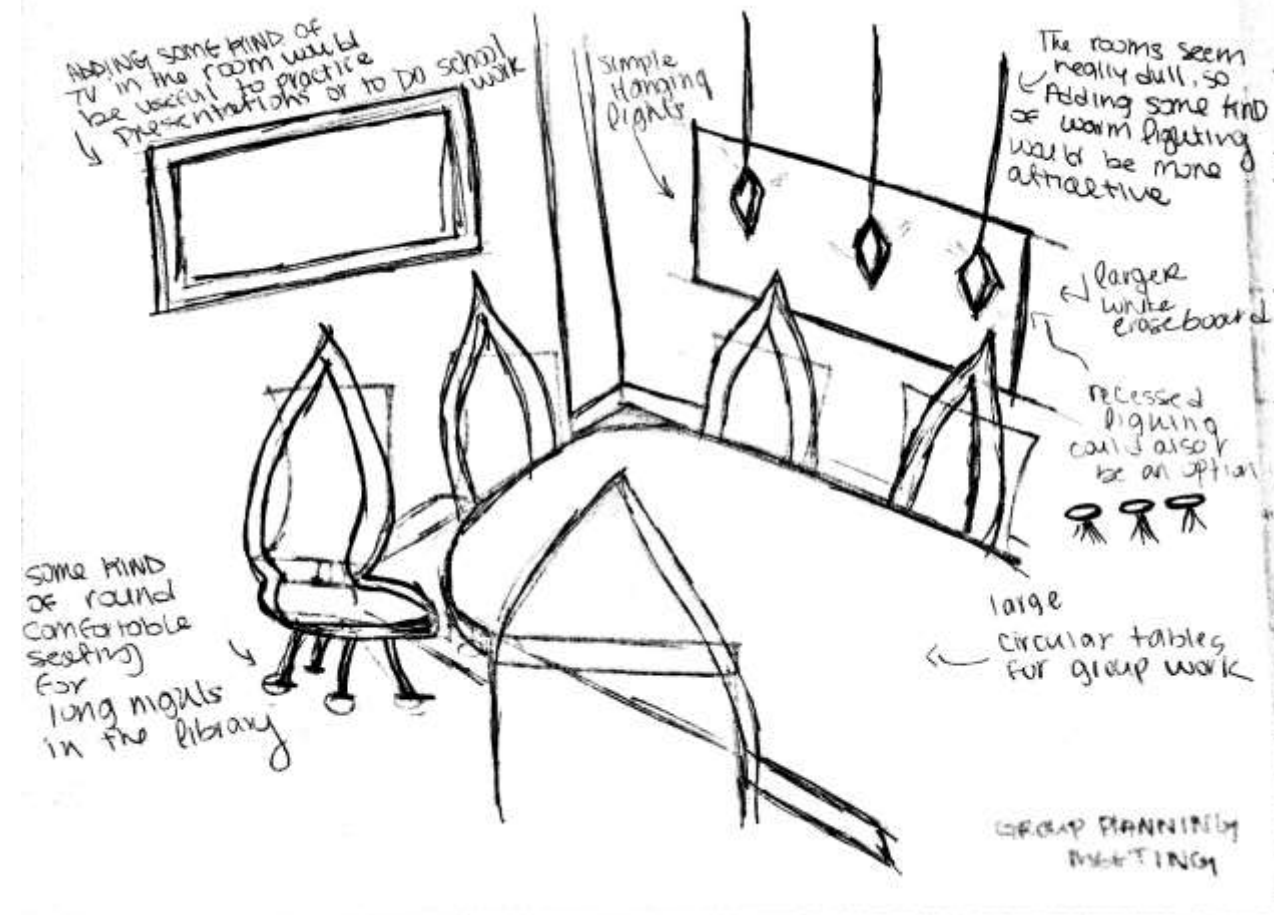
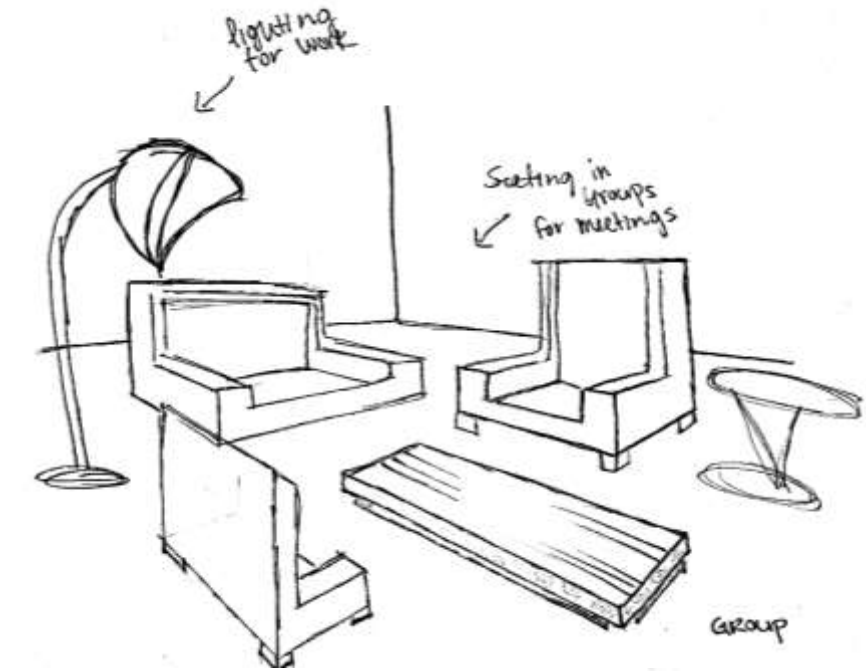
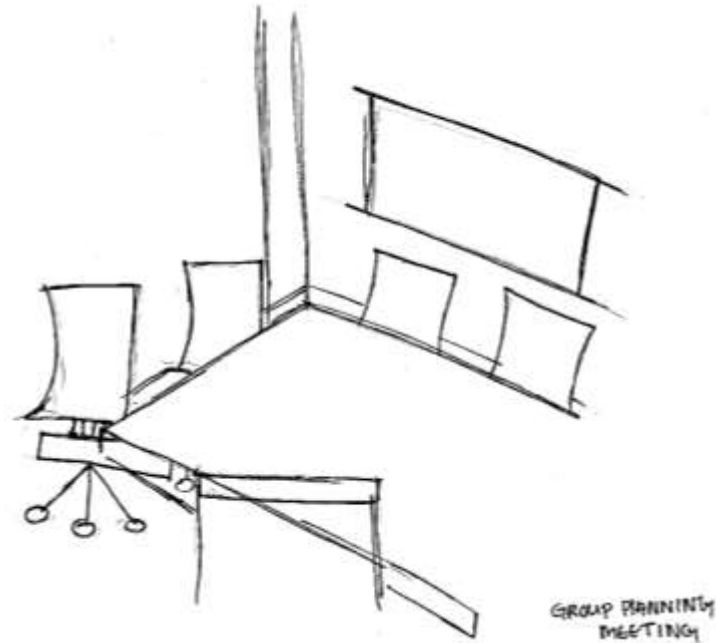
Activity Space Studies Socializing



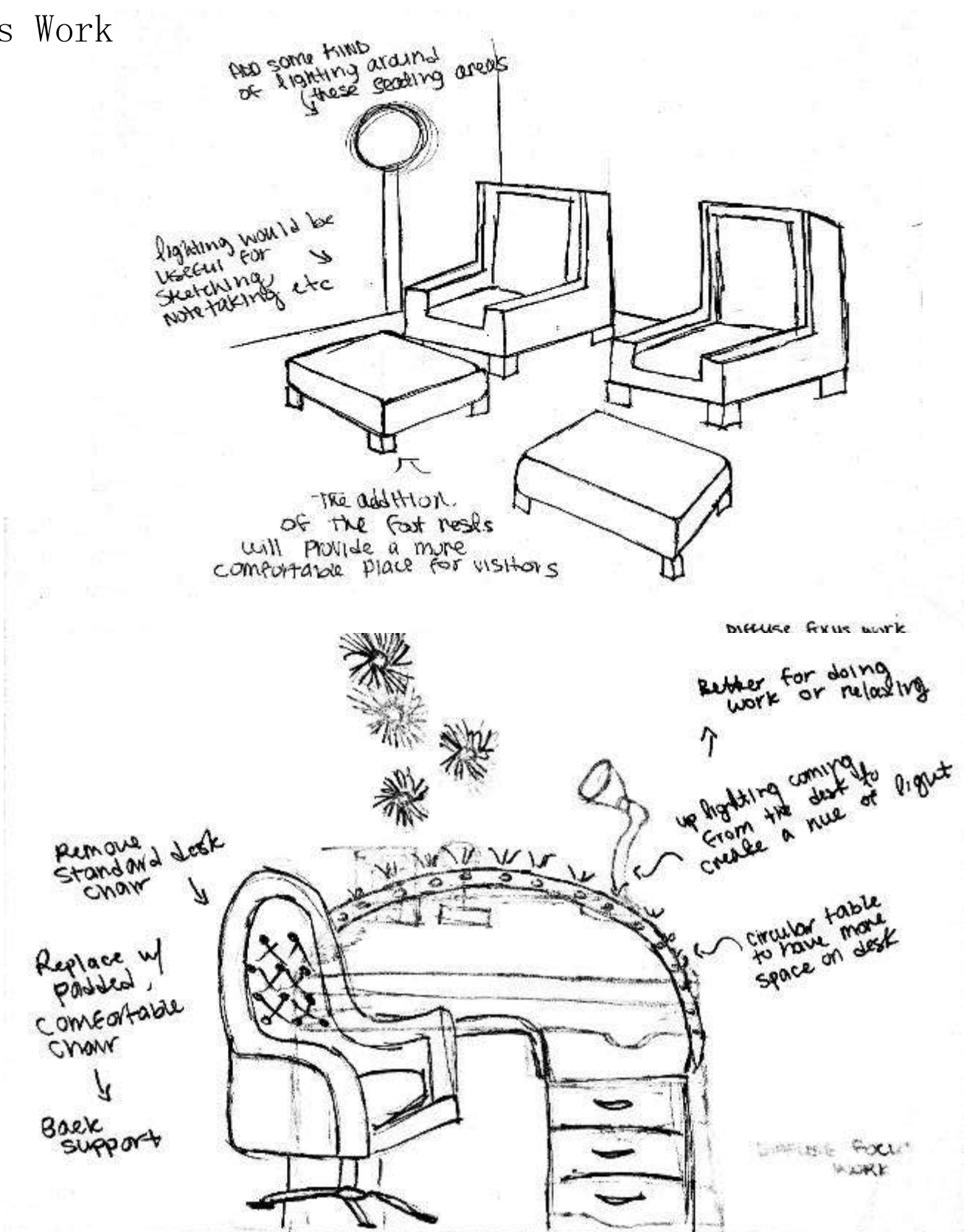
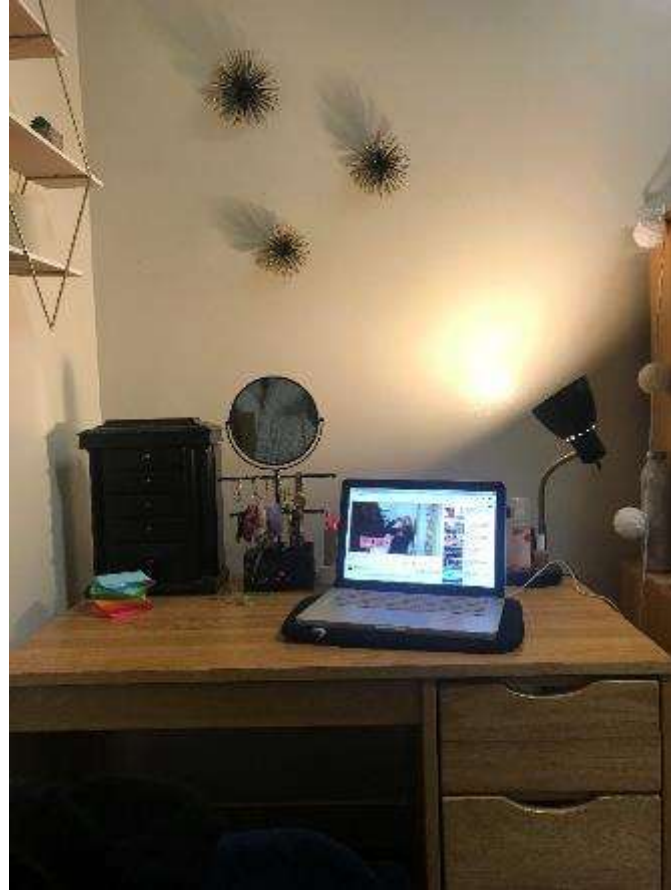
socialr



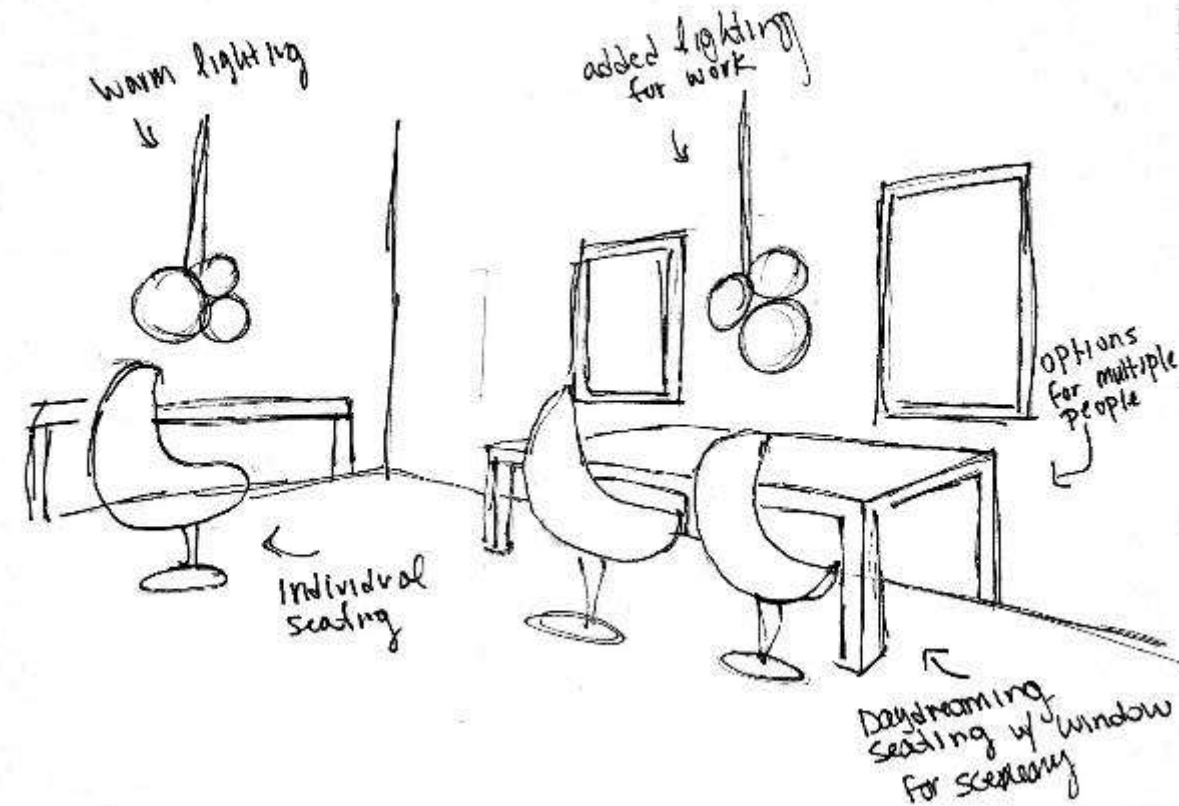
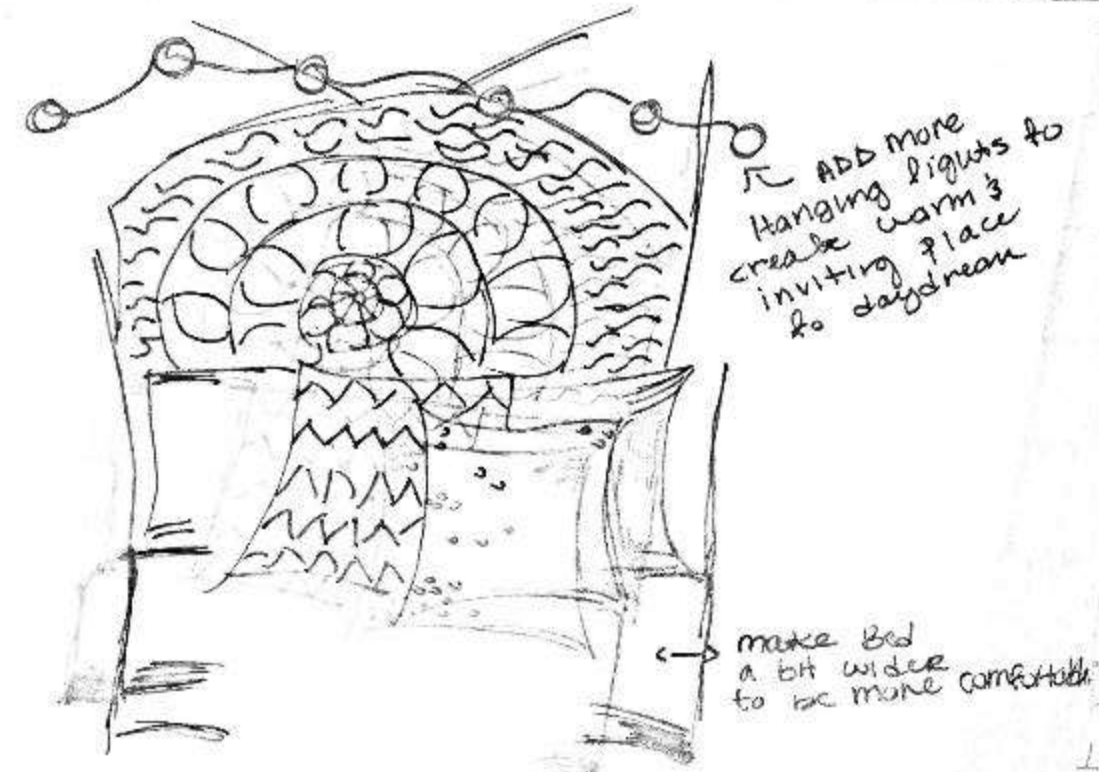
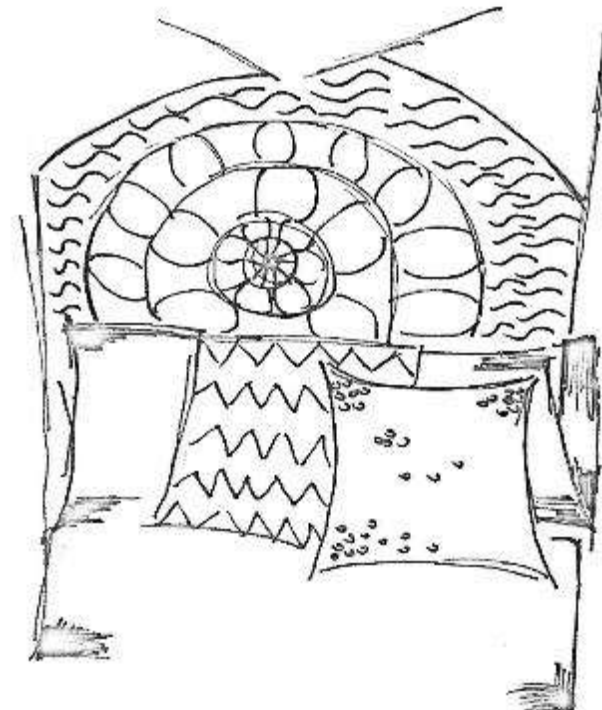
Activity Space Studies Group Meeting/ Planning



Activity Space Studies Diffused Focus Work

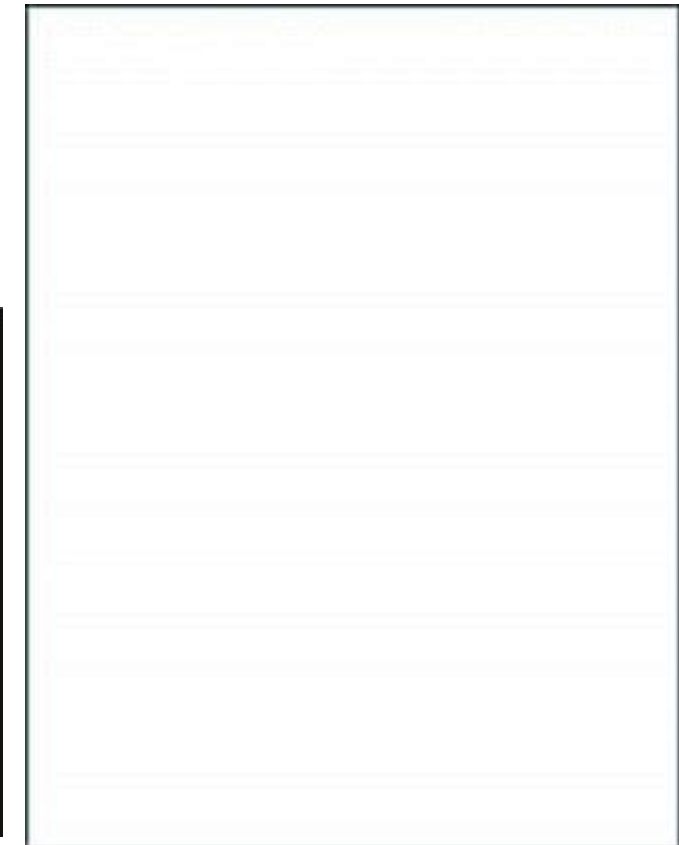


Activity Space Studies Daydreaming



Color Scheme

- The color scheme will be white, black, green and wood.
- Green will add a pop of color throughout the space through plant life and décor.
- Wood will be incorporated to bring warmth into the room.
- The color scheme is rustic, inviting and will provide customers/ visitors with a sense of serenity. The bubble lighting and the wooden light fixtures will provide light in certain study or work areas without being too overwhelming.



Concept

- The overall concept for this design is to provide a rustic, simplistic and open space for students, staff and residents to accomplish different goals.
- Warmth, flexibility and comfort is evoked from this design through the casual setting and ties in with the rustic style.
- The color scheme chosen evokes a forest like environment. The main color, green, will be incorporated through plant life. This will open up the space.
- By adding a variety of seating, the public will have options to choose from.
- Booths for families or group work, high tables with stools for individuals that come to do work, and chairs in the middle of the space for diffused focus work or even group work.

