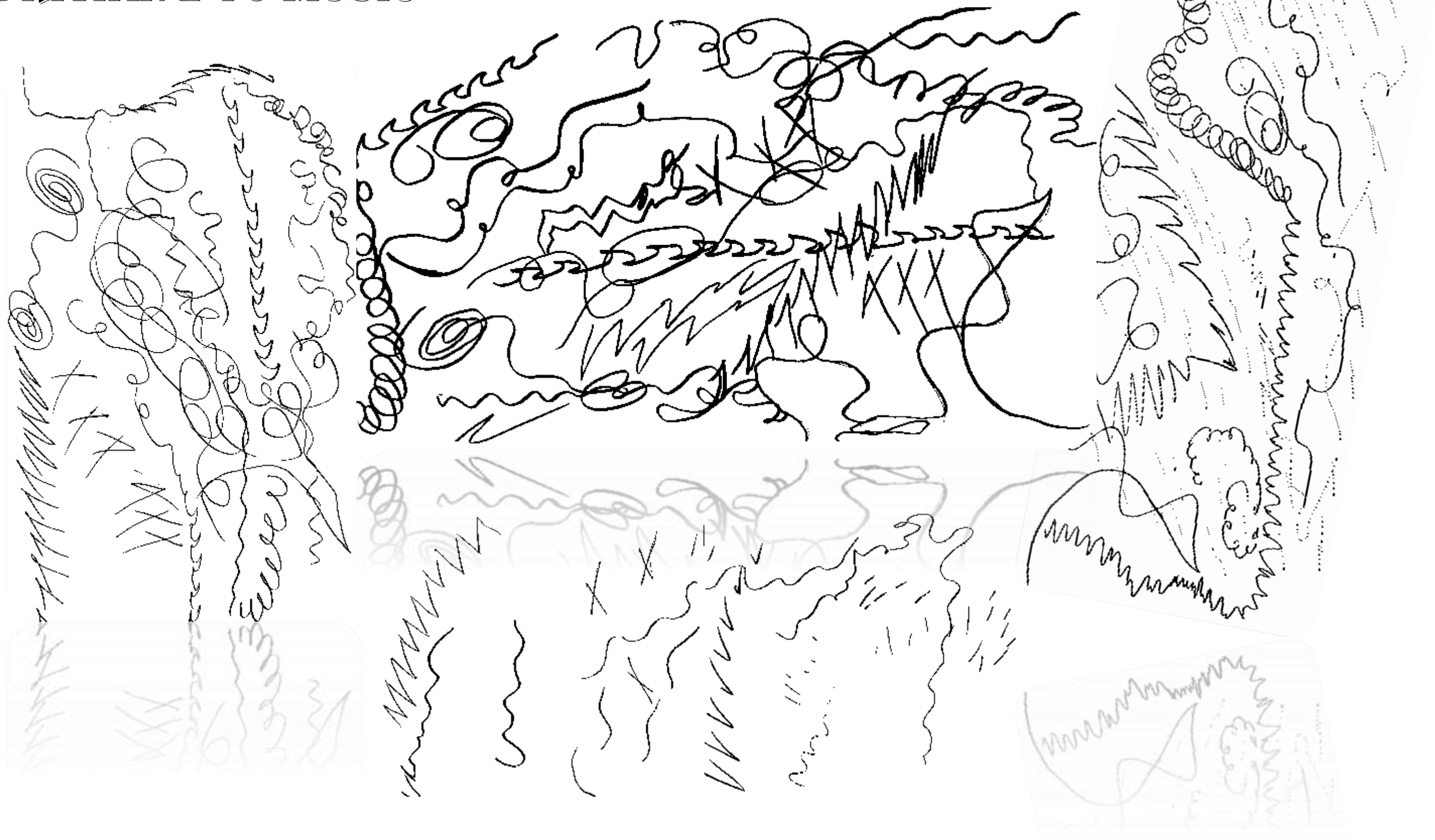


PORTFOLIO 2

Leah Thompson

DRAWING TO MUSIC



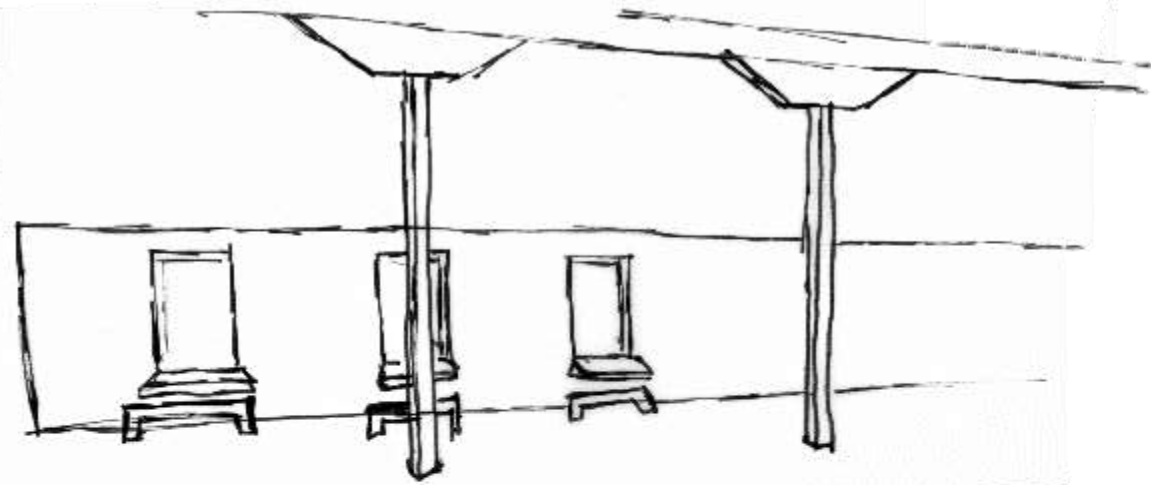
MUSIC MODEL



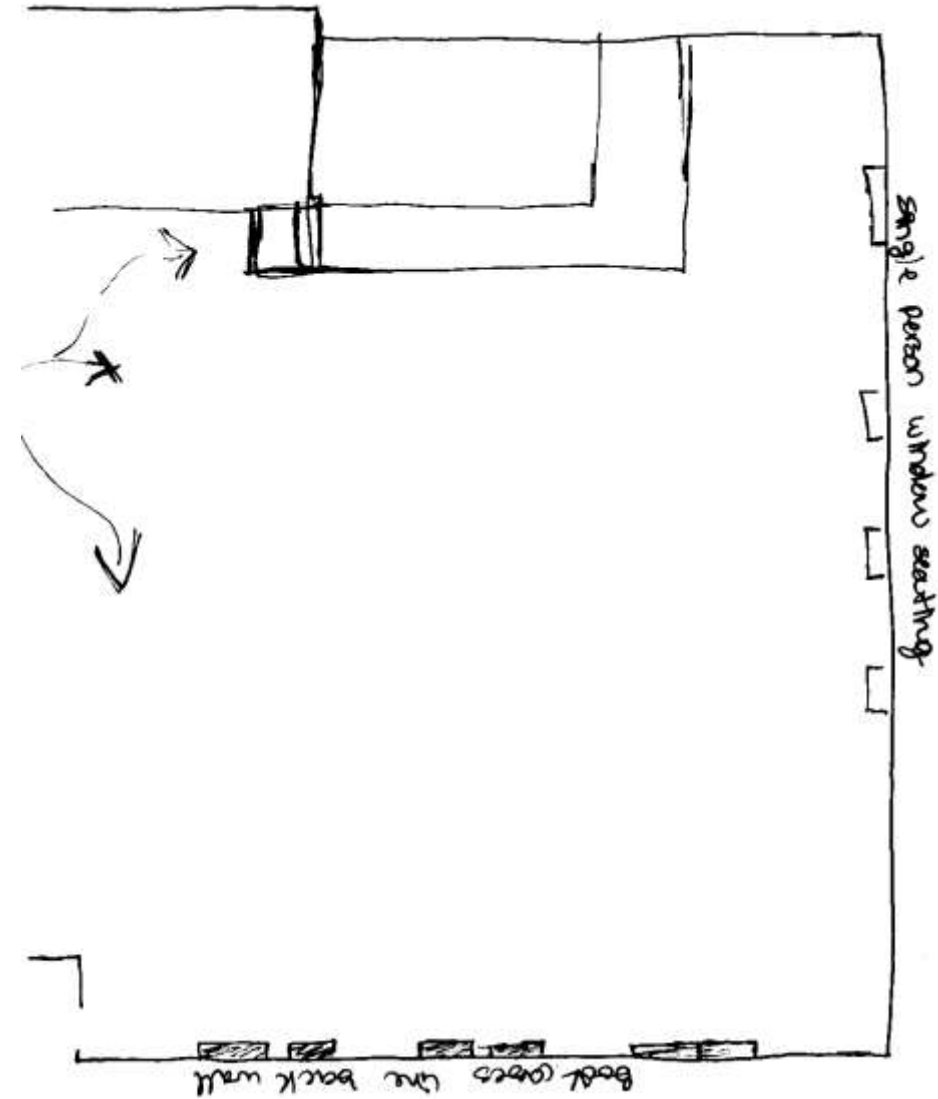
MUSIC MODEL CONTINUED



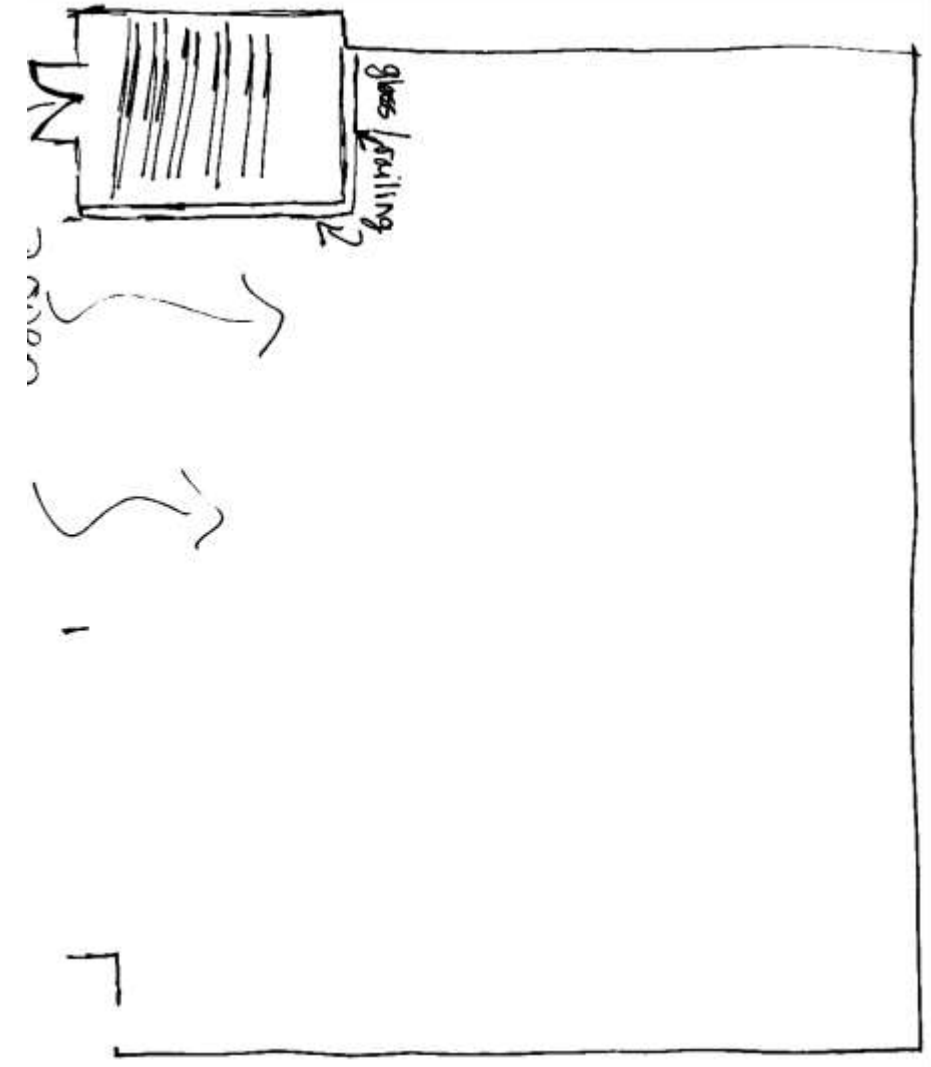
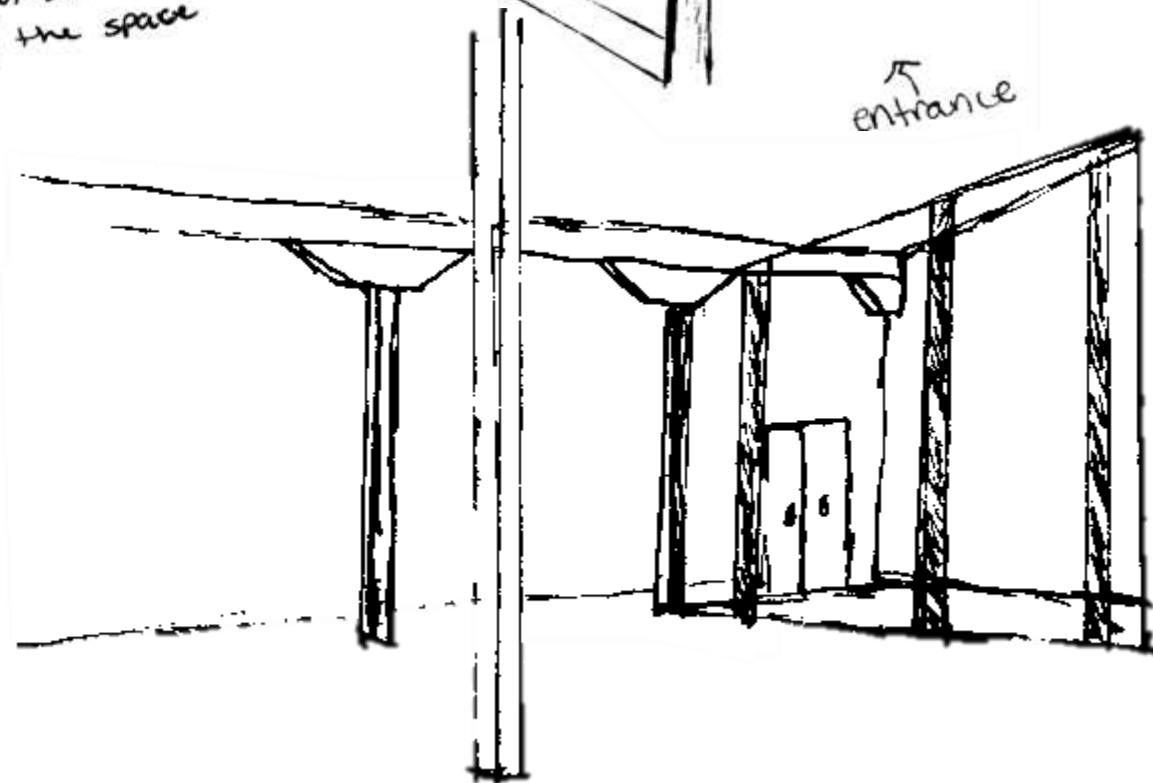
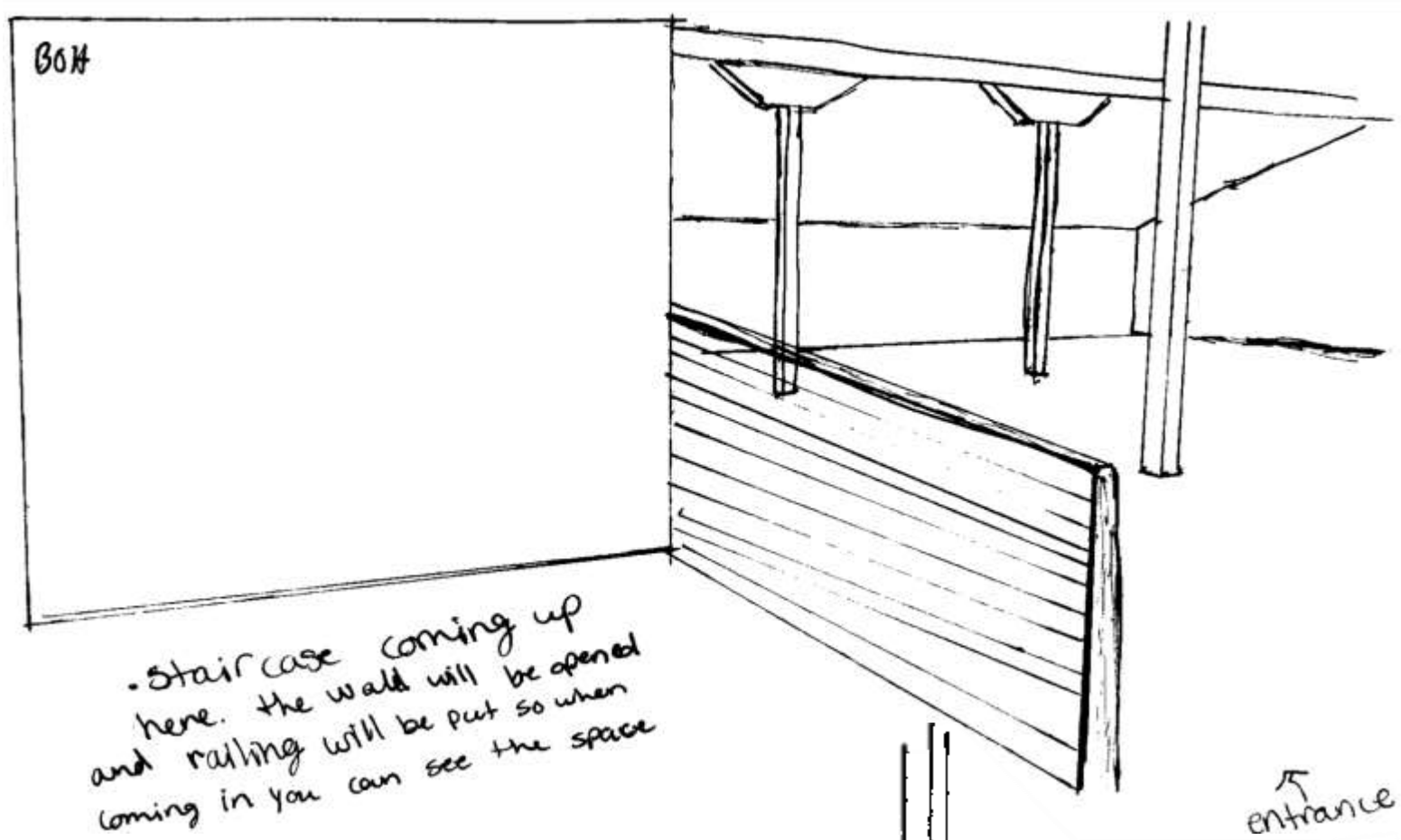
PROBLEM SOLUTIONS: WAYFINDING



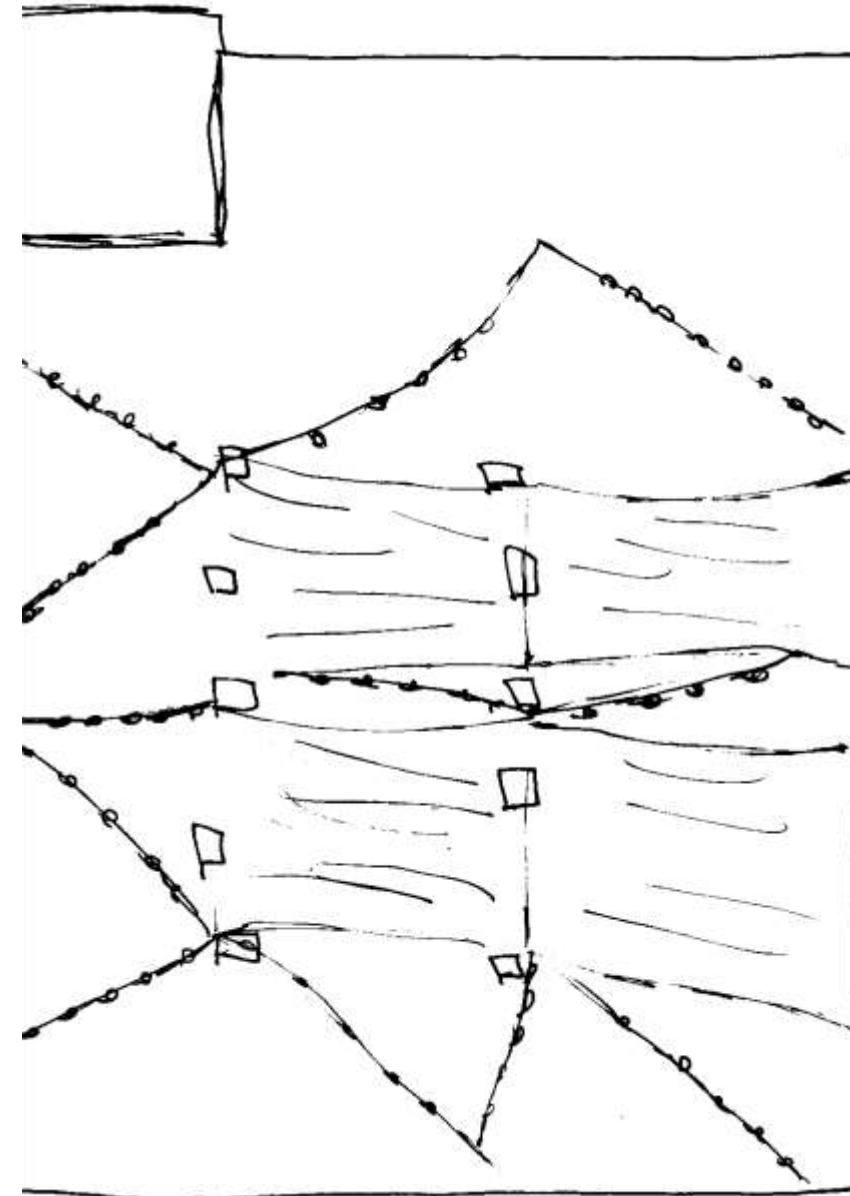
• when people walk into a space by themselves they might want to sit alone. By the windows there could be table attachments and benches for a single person to sit



PROBLEM SOLUTIONS: STAIRS

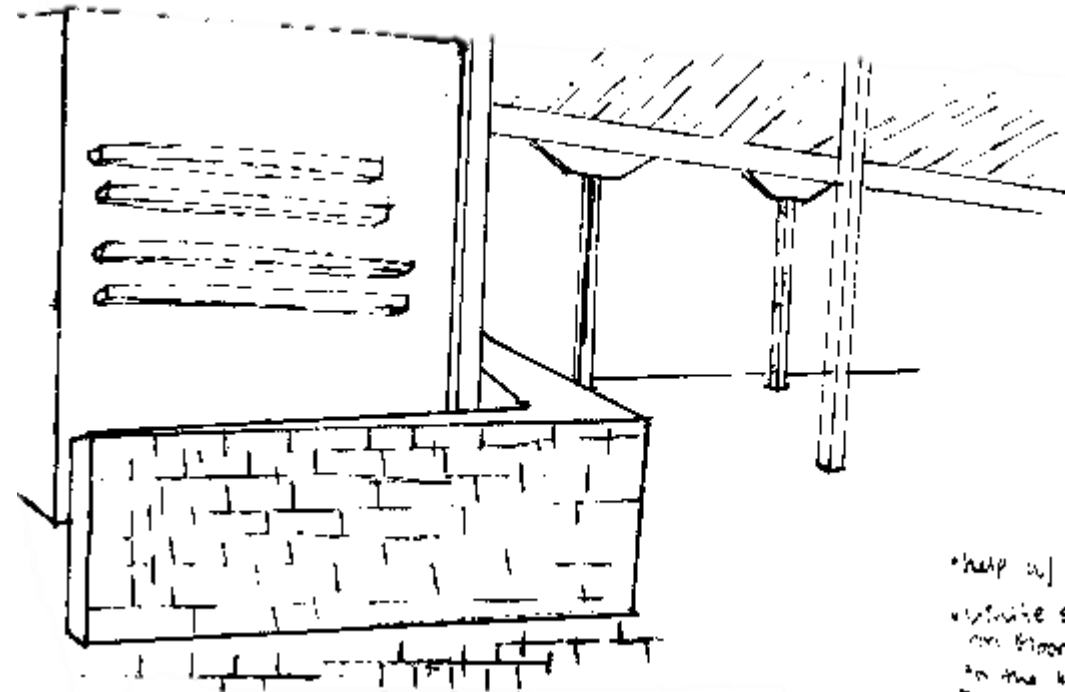
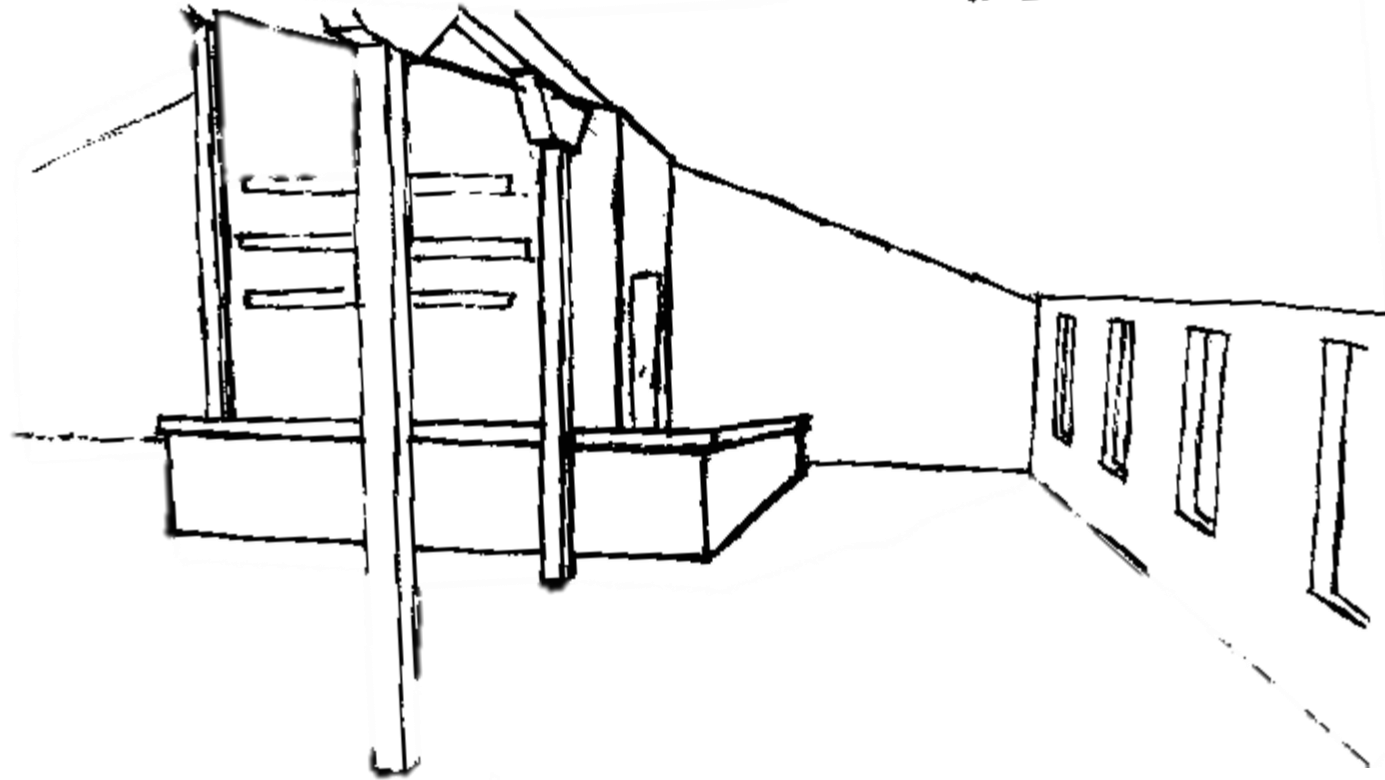


PROBLEM SOLUTIONS: CEILING & LIGHTING

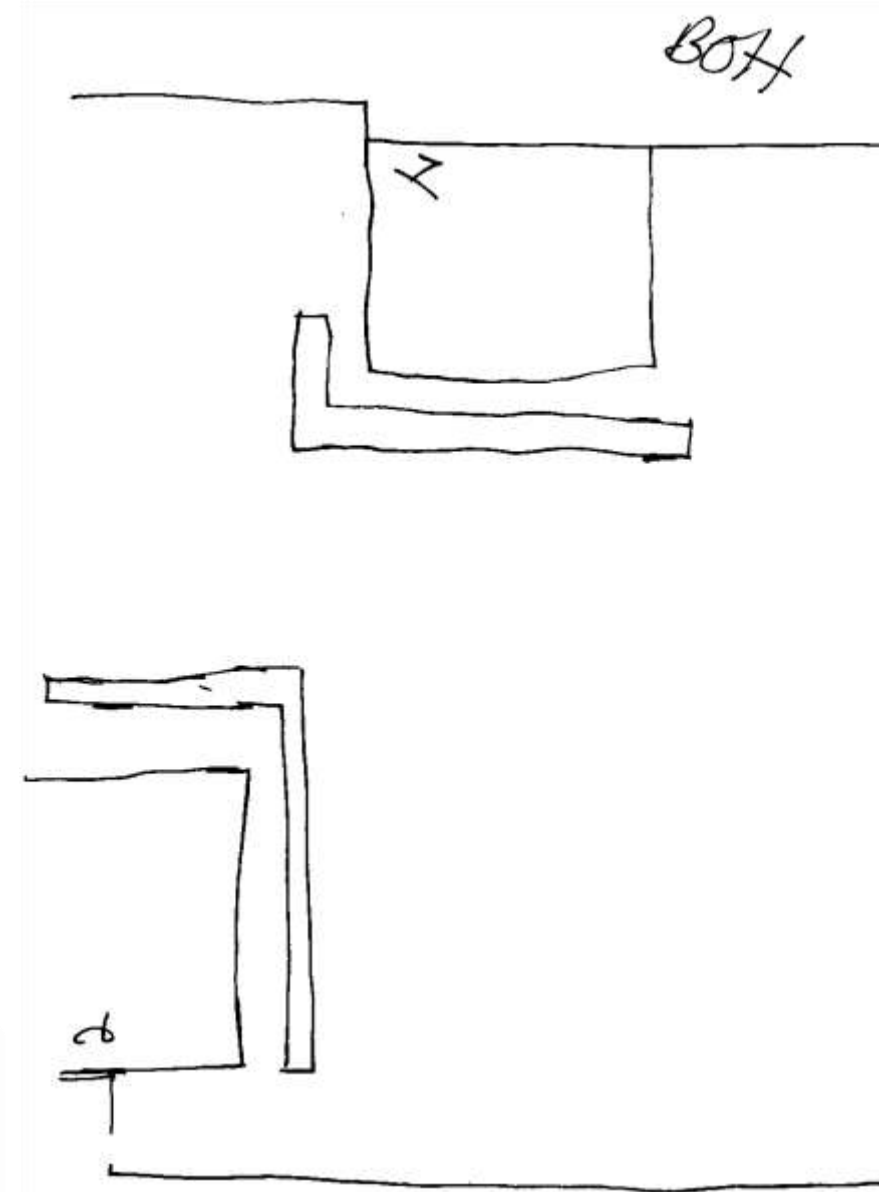


PROBLEM SOLUTIONS: BACK OF HOUSE

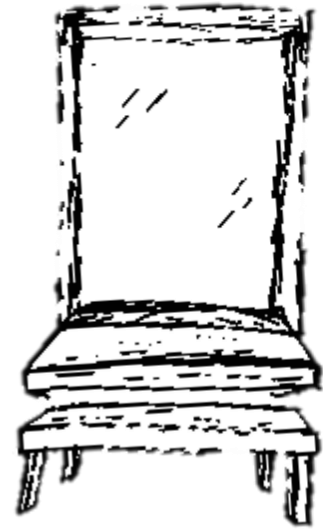
exposed shelving on the wall
at the BOH will bring attention to
the area



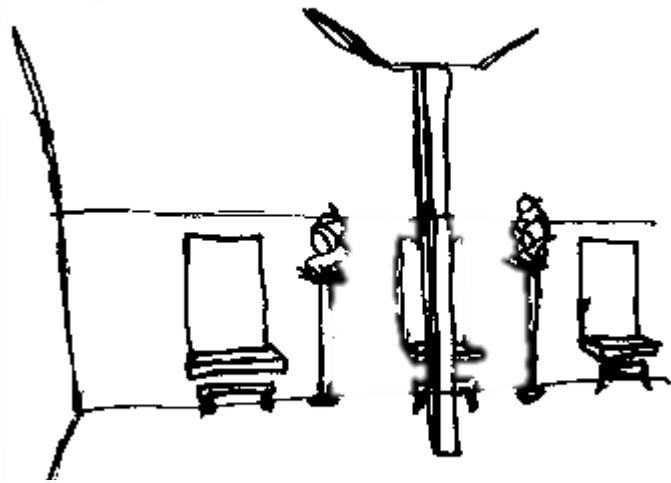
help w/ way finding
define subway tile
on floor leading up
to the wall at main
entrance way.



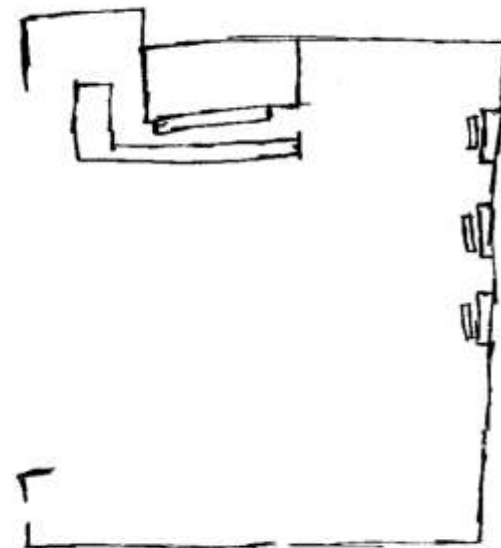
ACTIVITY SPACE STUDIES: DIFFUSE FOCUS WORK



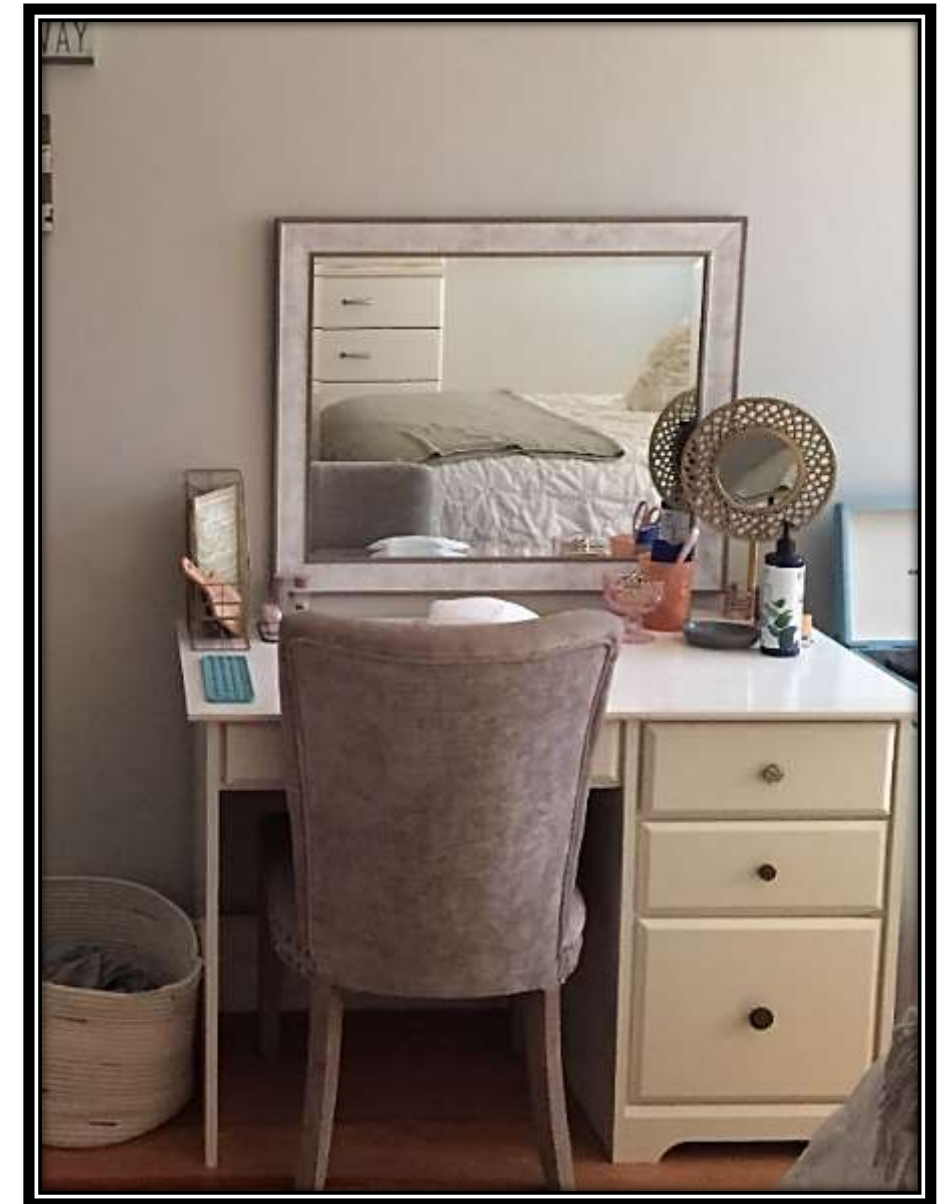
• wood tables attached to the large windows with stools in front of them for people to sit and work or study alone.



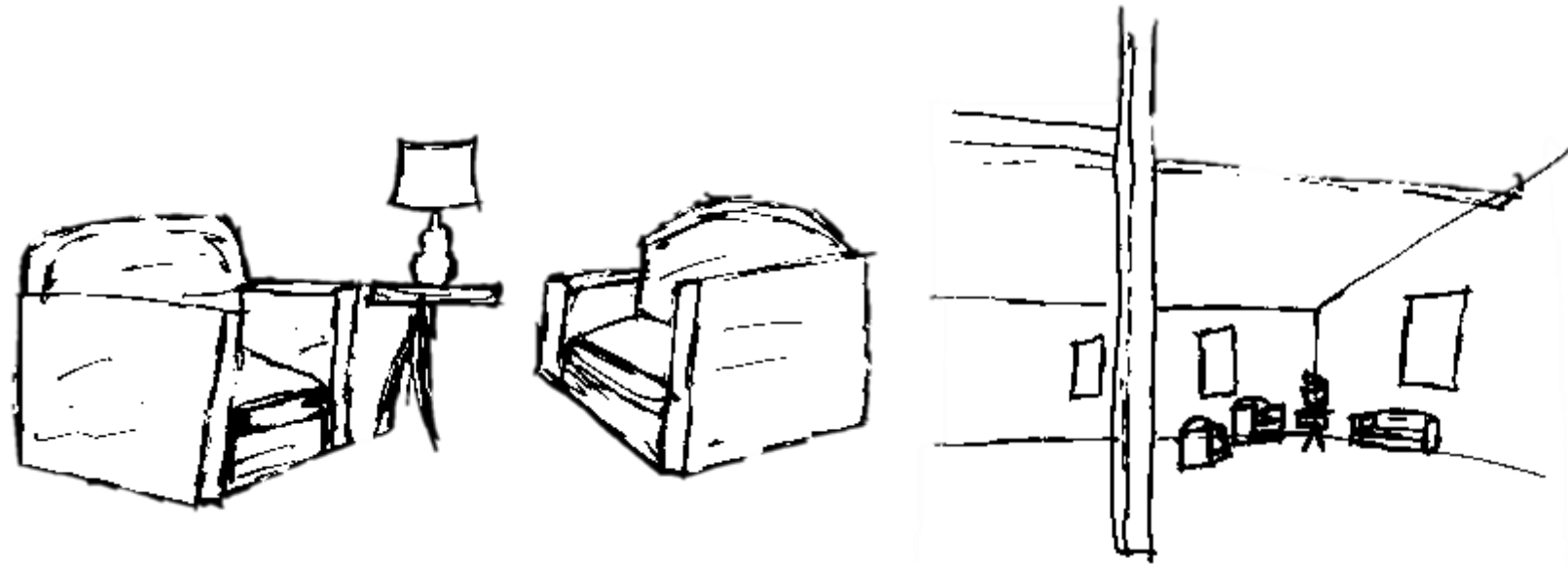
Section



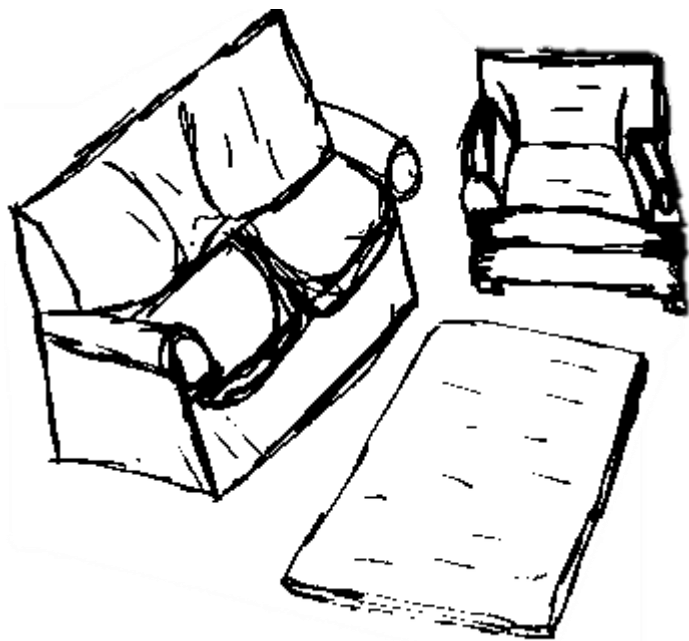
- section - you see how the table top will come out from the window and line the wall.
- plan - where the windows are you see they will stick out a little but there could still be room to put more seating



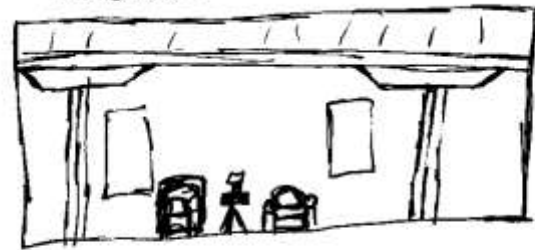
ACTIVITY SPACE STUDIES: SOCIALIZING



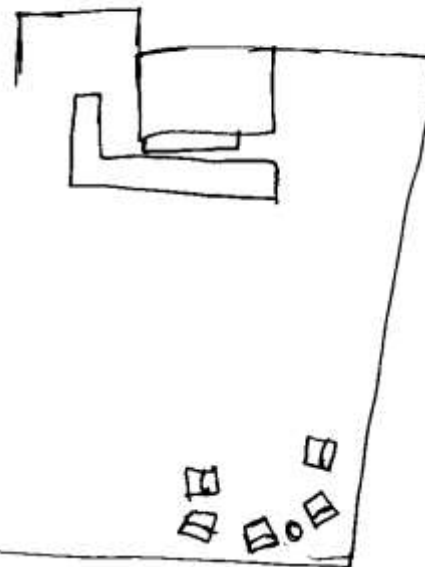
• the music model is being used as a lamp on the table in the corner.



section



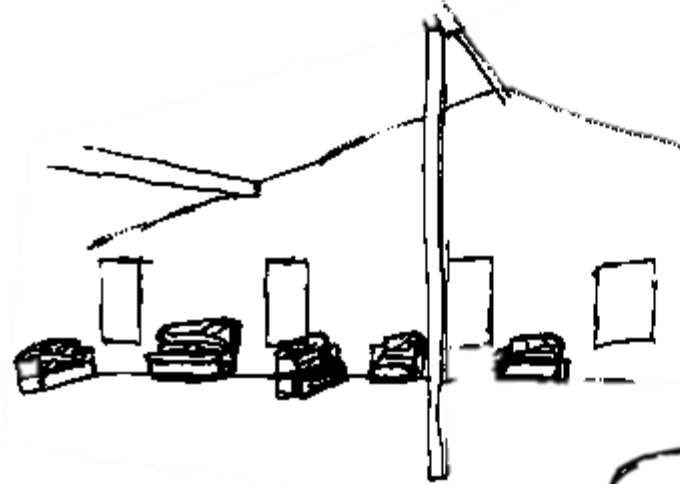
plan



• section you see the chairs would be close to the wall or by the windows.
• Plan - chairs could be lined in the corner in a circle for people to be able to see each other

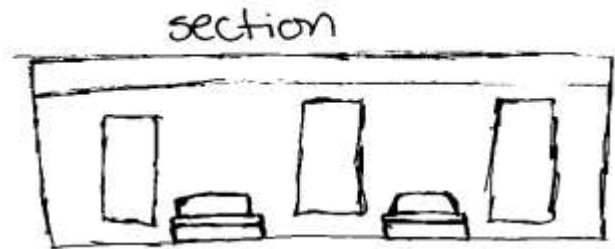
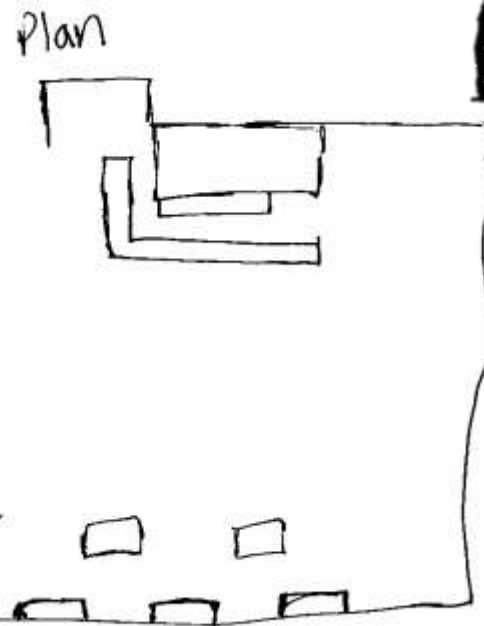
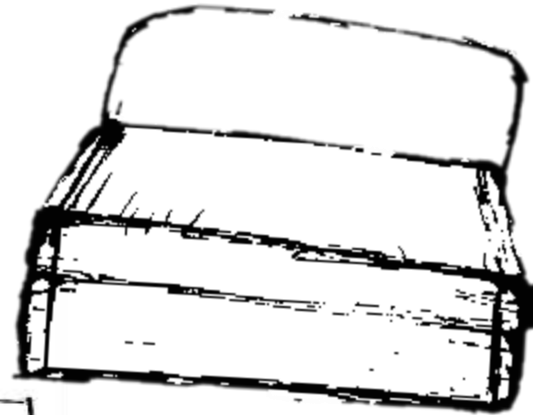


ACTIVITY SPACE STUDIES: DAY DREAMING



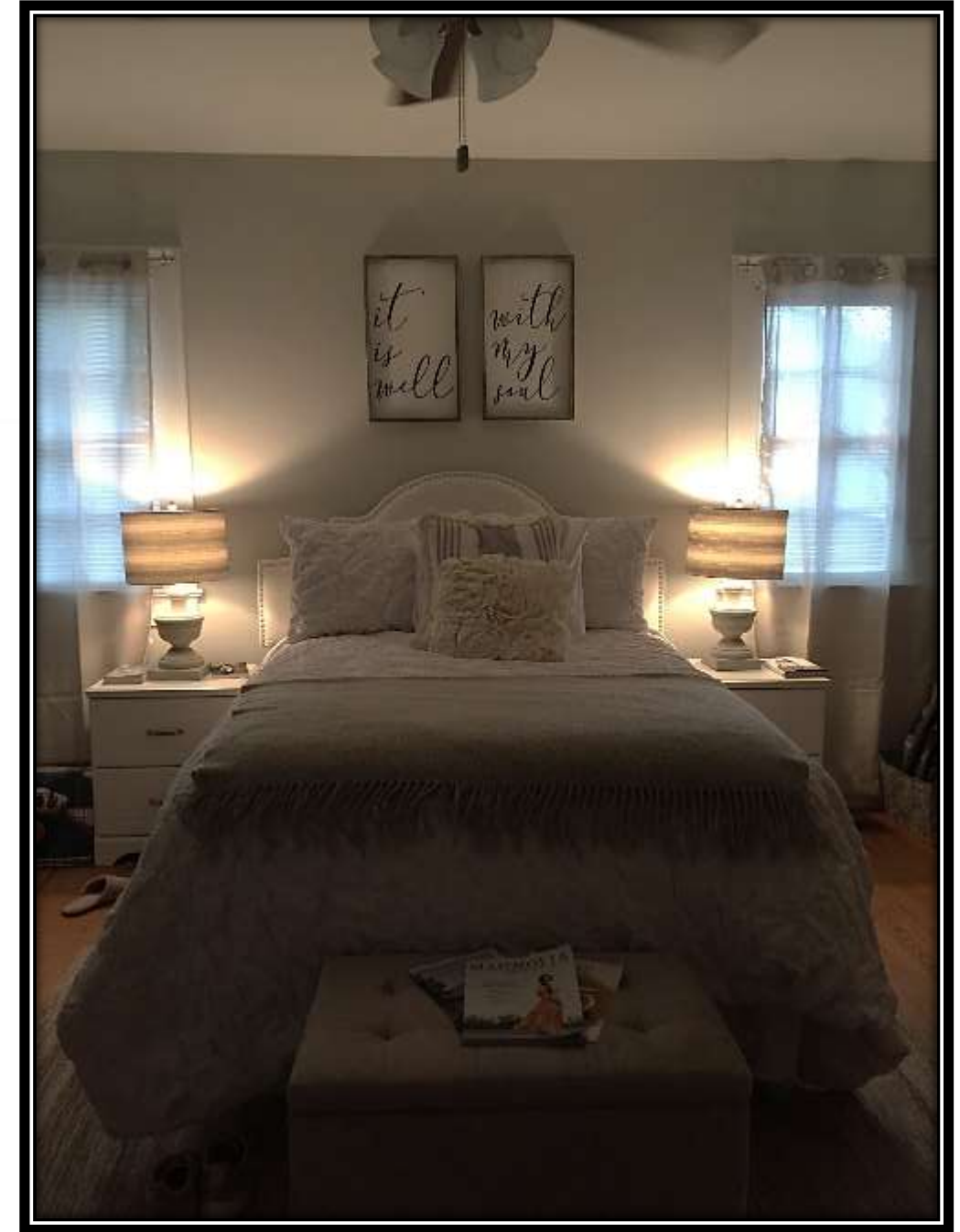
• the lounge chairs against the back wall. ~~are~~ creating a cozy environment

• the music model is ~~is~~ done on the back of the chairs.



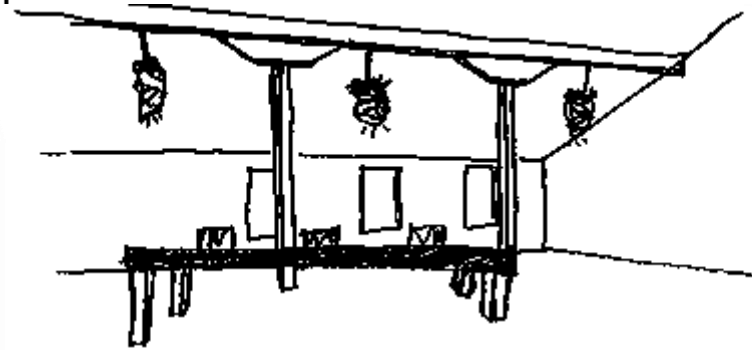
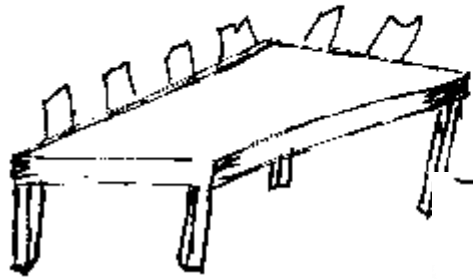
• section- the chairs would be against the back wall.

• Plan- the chairs against the wall and close to the windows. but also could go in front so more people could sit together in this area



ACTIVITY SPACE STUDY: GROUP PLANNING & MEETING

• longer long table lined w/ chairs to hold larger group of people for meeting.



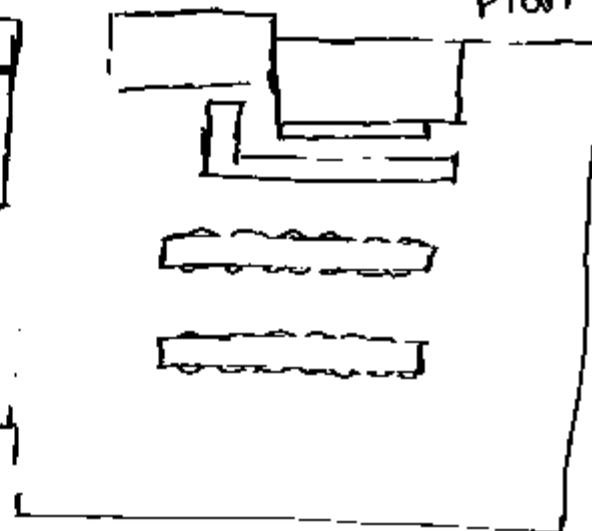
• music model used as lanterns / pendant lights from the beams.

Section

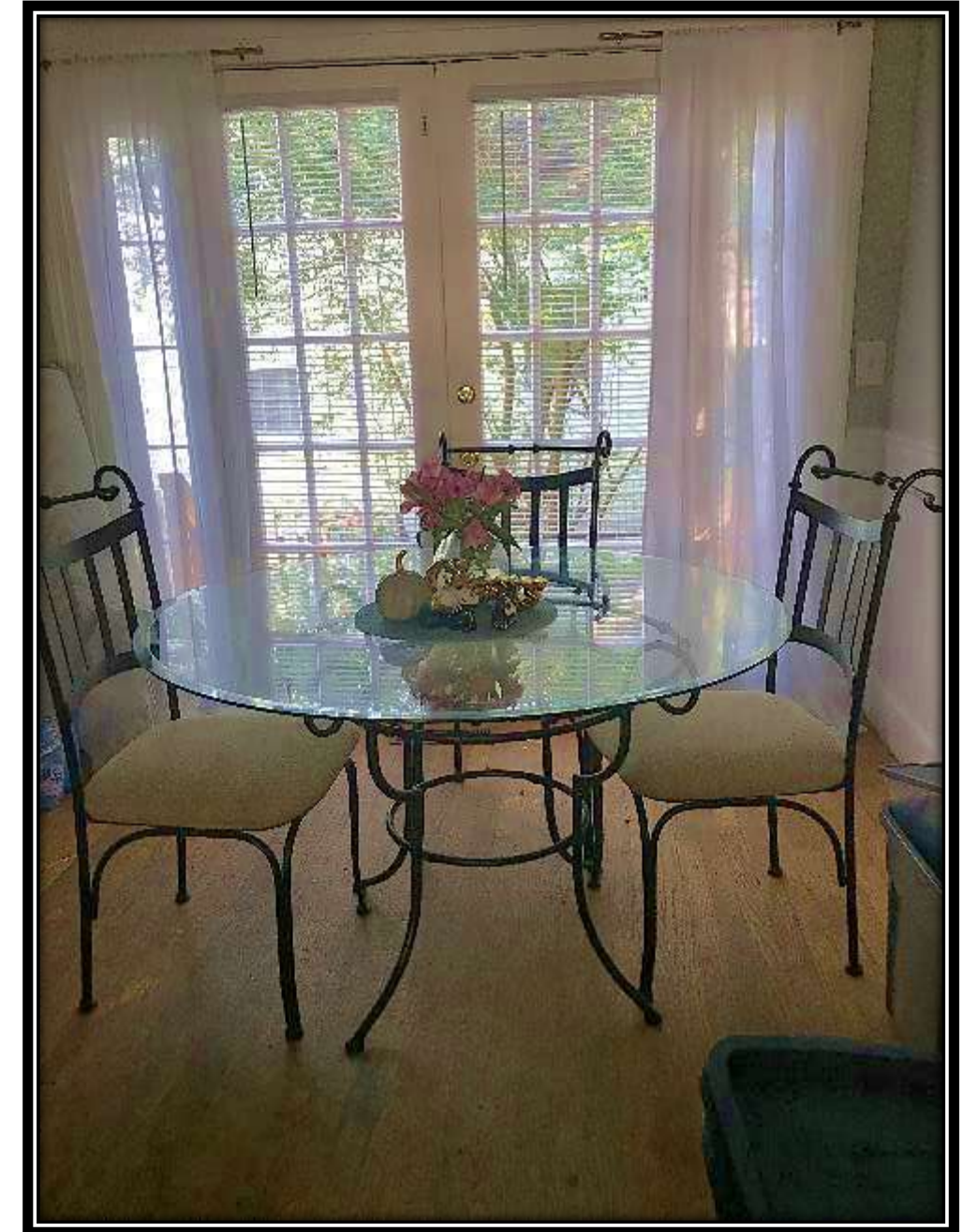


• Groups can meet at a large table and have lighting hitting the whole table.

Plan



• Section you can see how the tables will be long
 • Plan you see there will be 2 of them to give multiple groups space



INSPIRATION AND CONCEPT



Design Concept

- A place where people can go to unplug from their life in a cozy warm atmosphere that embraces the rustic comfort of the building around it.

