

Portfolio 1
Corey Eads

24 September 2019

IDSN 2102

Assignment 1

Scales

Assignment 1

Notes

Engineering scale: $1'' = 10.0'$

$24.0'$

$86.0'$

Scale: $1'' = 40.0'$

$160.0'$

$245.0'$

Scale: $1'' = 200.0'$

$1000.0'$

$400.0'$

Scale: $1'' = 20.0'$

$110.0'$

$60.0'$

Architectural Scale

Scale: full

$6 - 1/4''$

$9 - 3/8''$

Scale: $1/4'' = 1' - 0''$

$24' - 8''$

$30' - 6''$

Scale: $1/8'' = 1' - 0''$

$49' - 4''$

$61' - 0''$

Scale: $1/4'' = 1' - 0''$

$4' - 6''$

$0' - 8''$

Scale: $3/4'' = 1' - 0''$

$6' - 9''$

$2' - 0''$

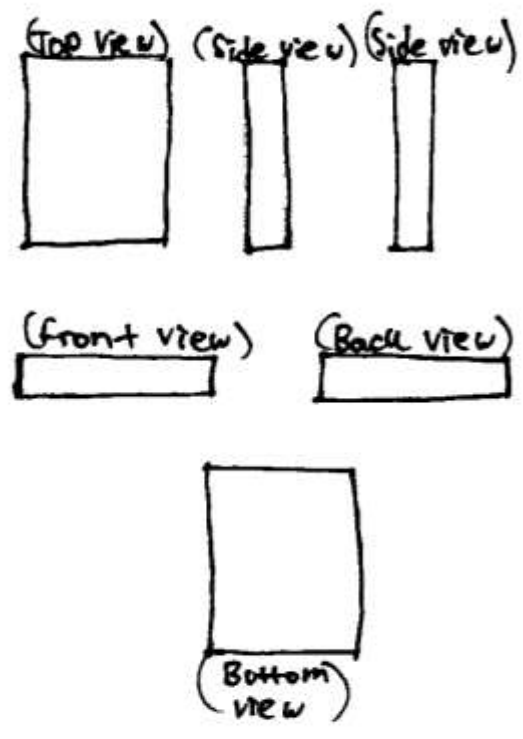
Corey Eads

IDSN 2102 F19

Assignment 2

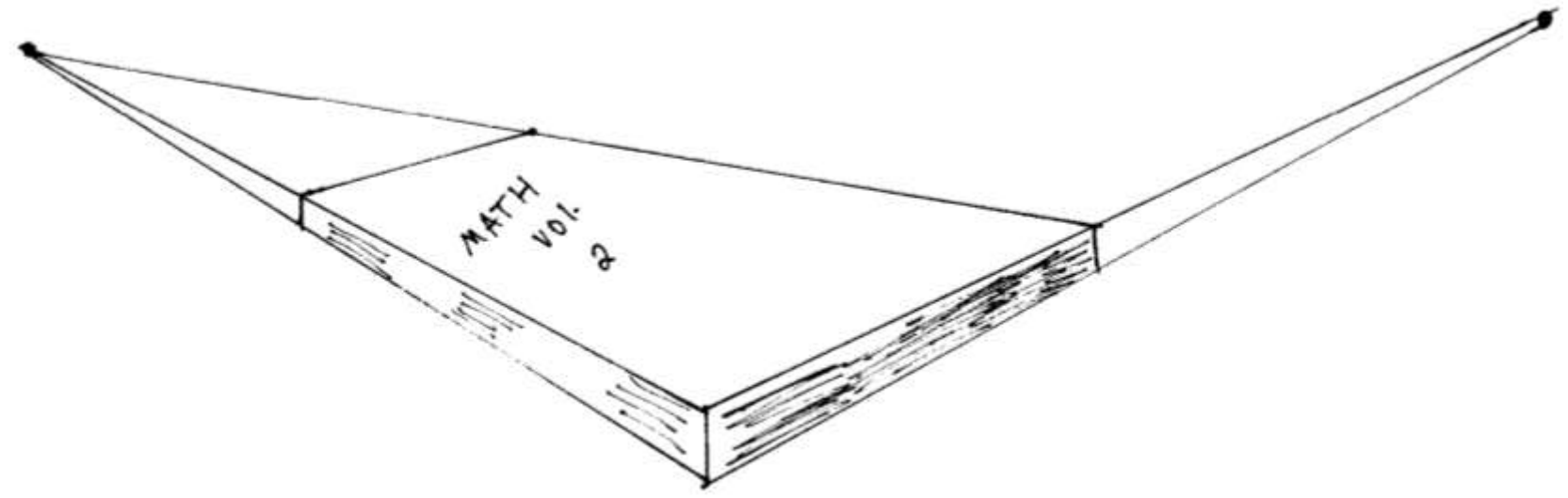
Competencies

Assignment 2



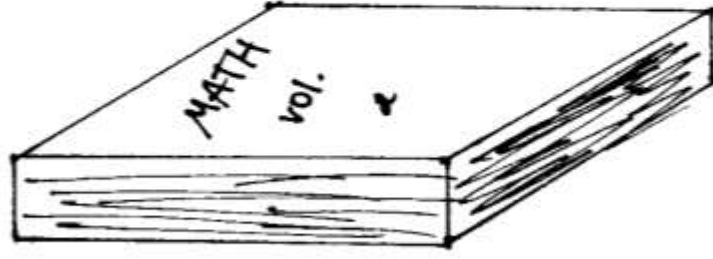
2 Point Perspective

— NOISES —

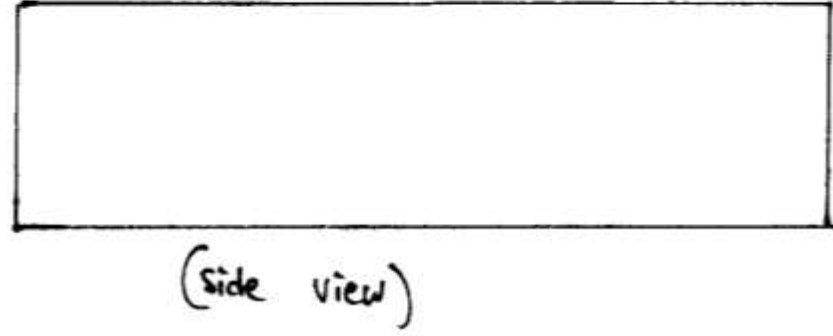


Assignment Competencies

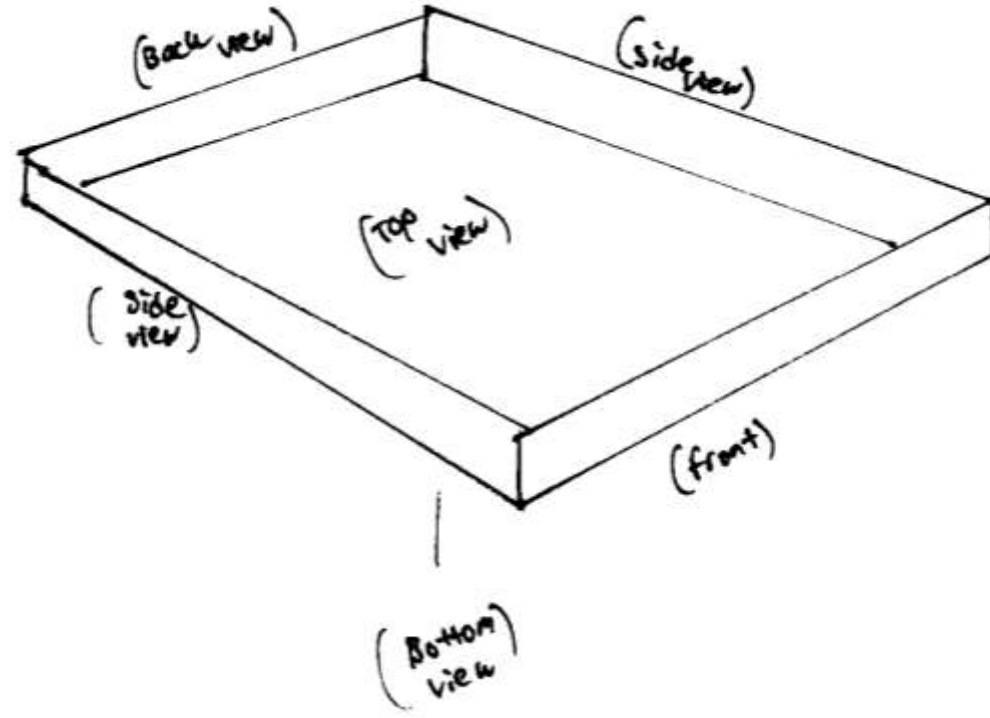
Oblique Drawing 30°



Oblique Drawing 0°



Isometric Projection



Assignment 3A
Store Photographs

Image 1



Image 2



Image 3

Corey Eads
IDSN 2102 F19

Assignment 3A

Image 1

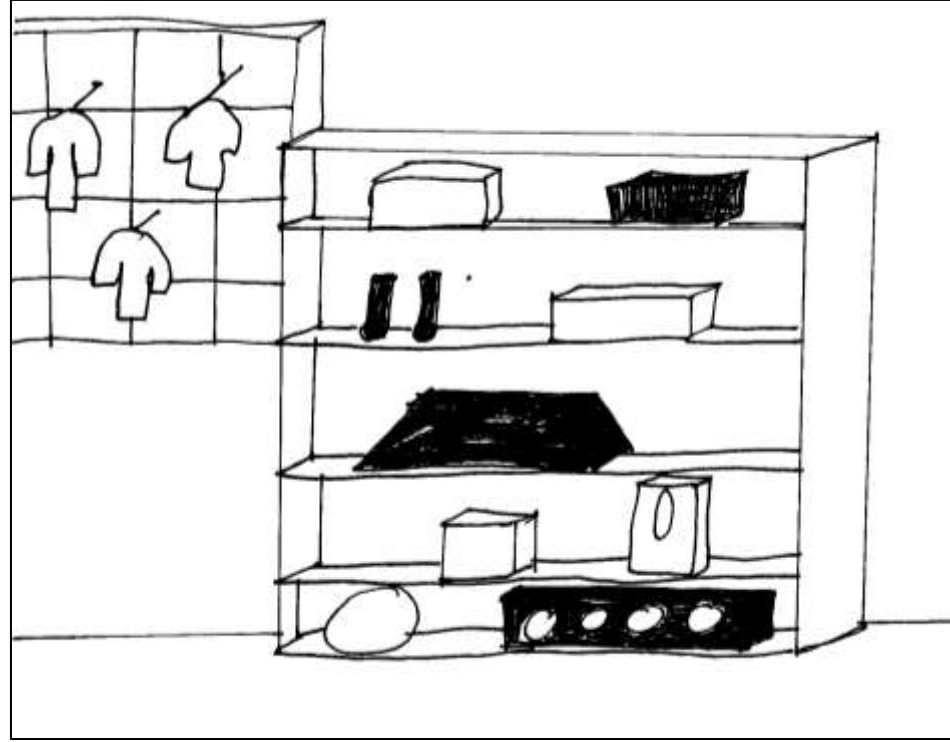


Image 2

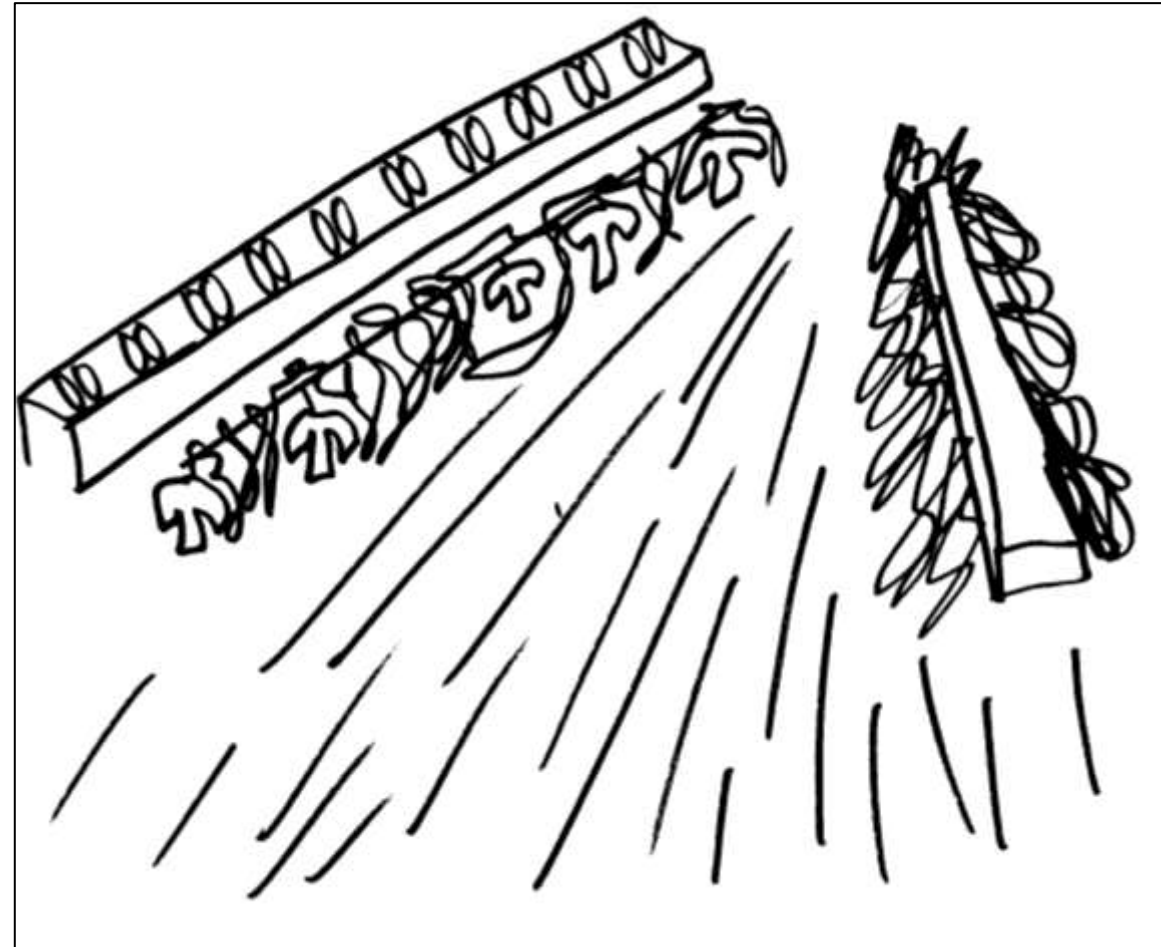
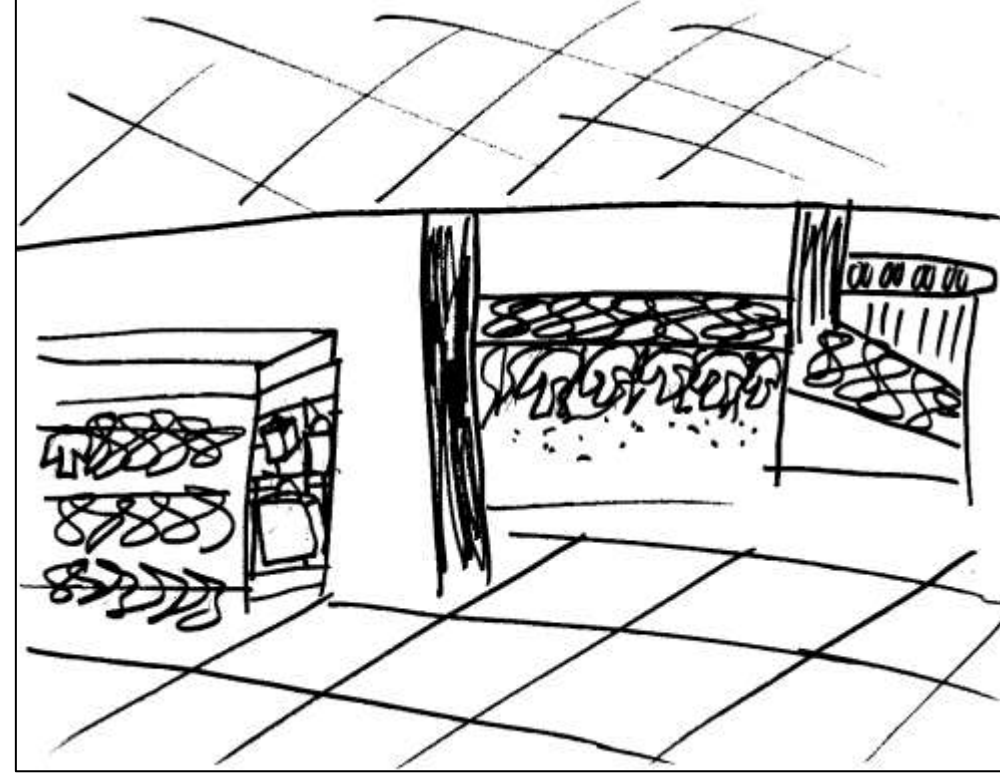


Image 3

Corey Eads

IDSN 2102 F19

Assignment 3B

Floor Plans

Image 1

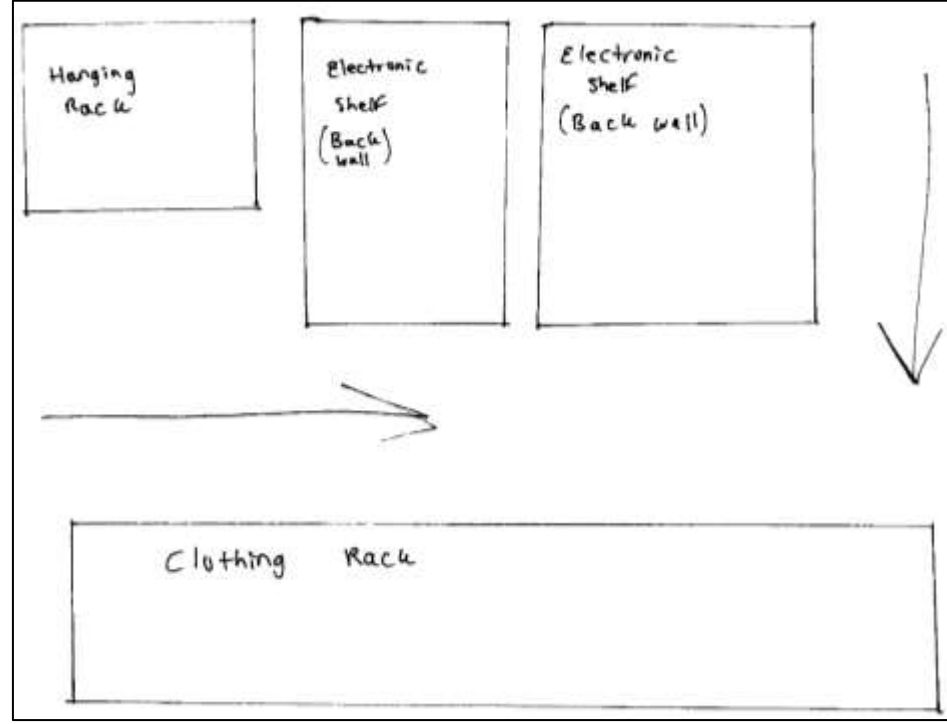


Image 2

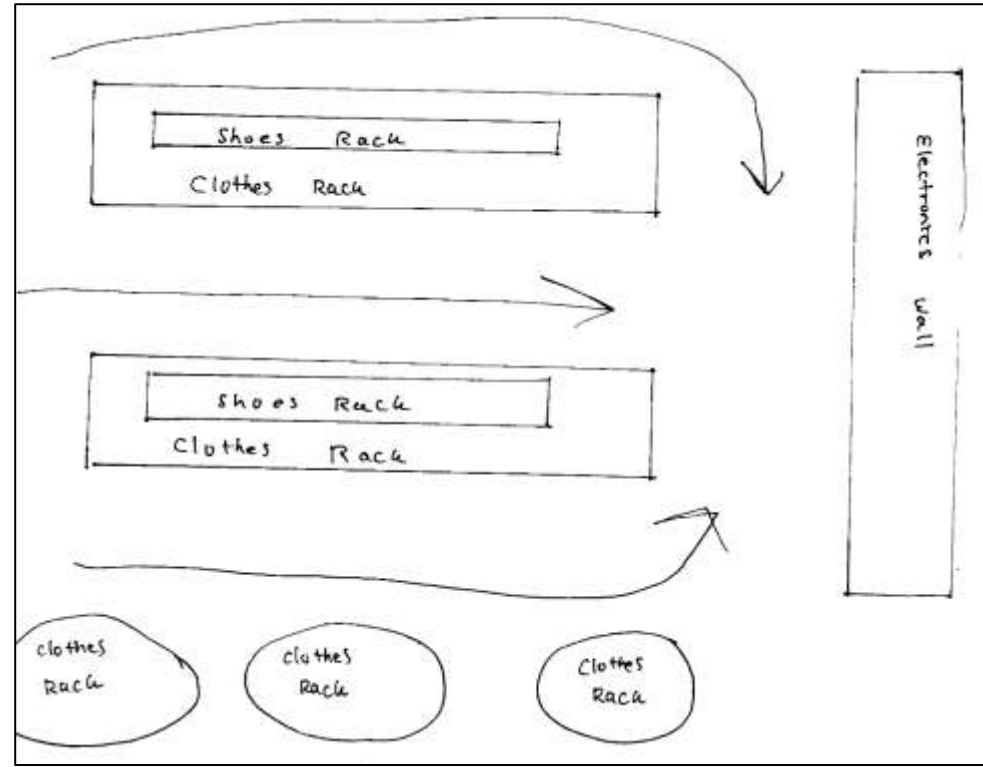
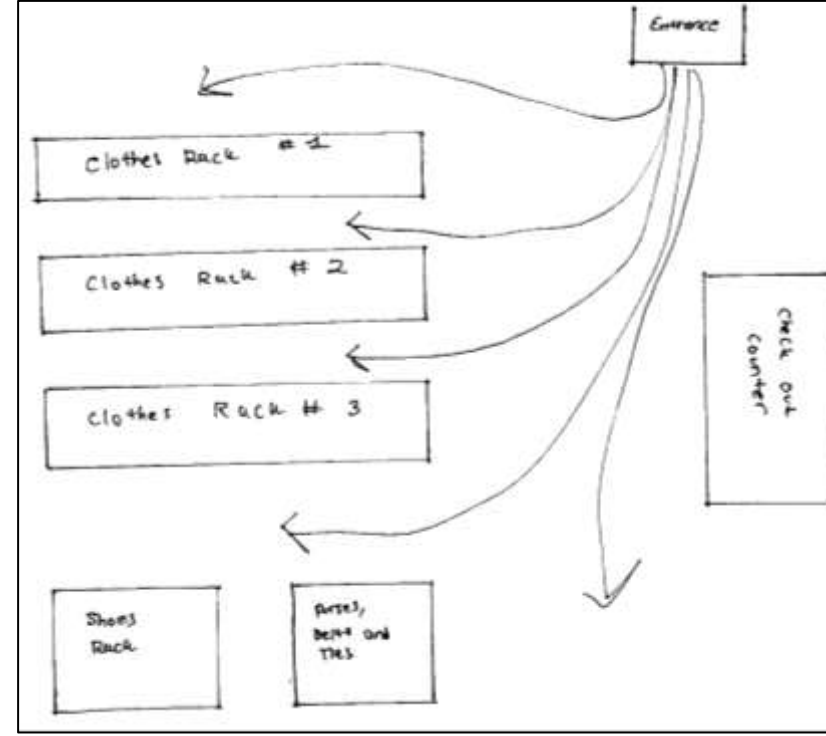


Image 3

Corey Eads

IDSN 2102 F19

Assignment 3B

Section Views

Image 1

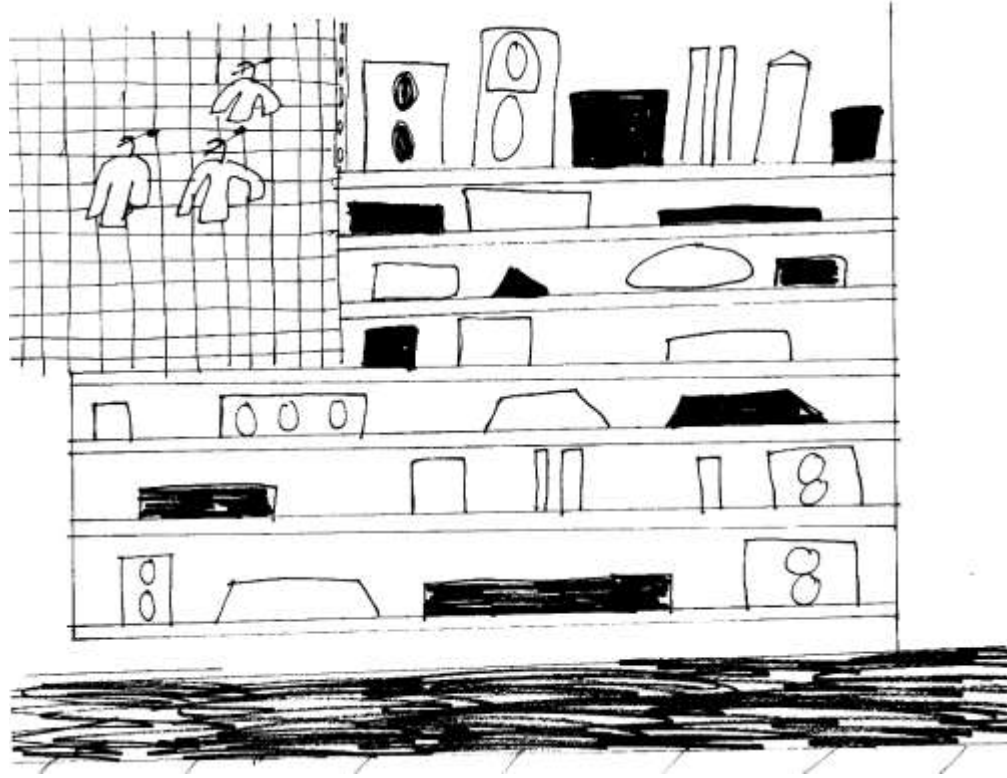


Image 2

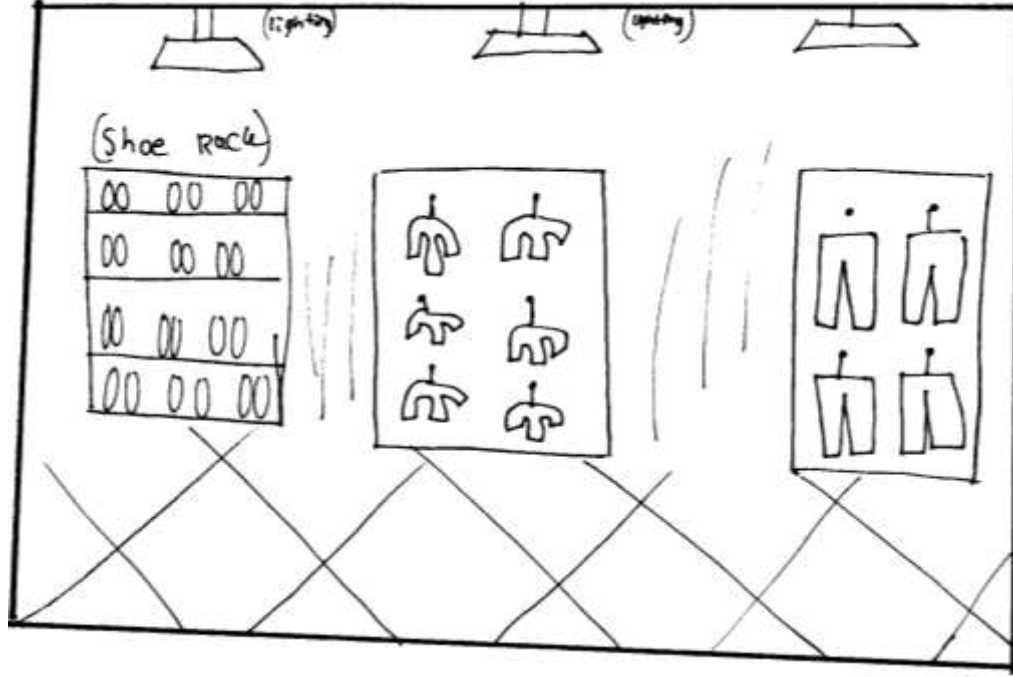
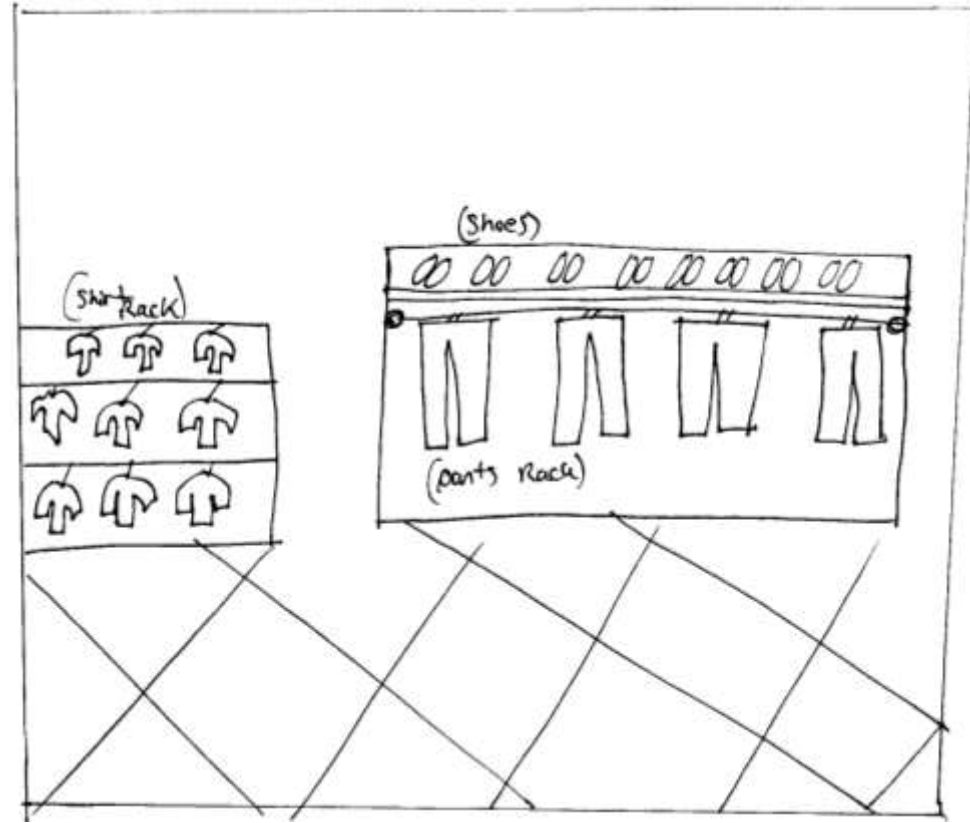


Image 3



Corey Eads

IDSN 2102 F19

Image 1

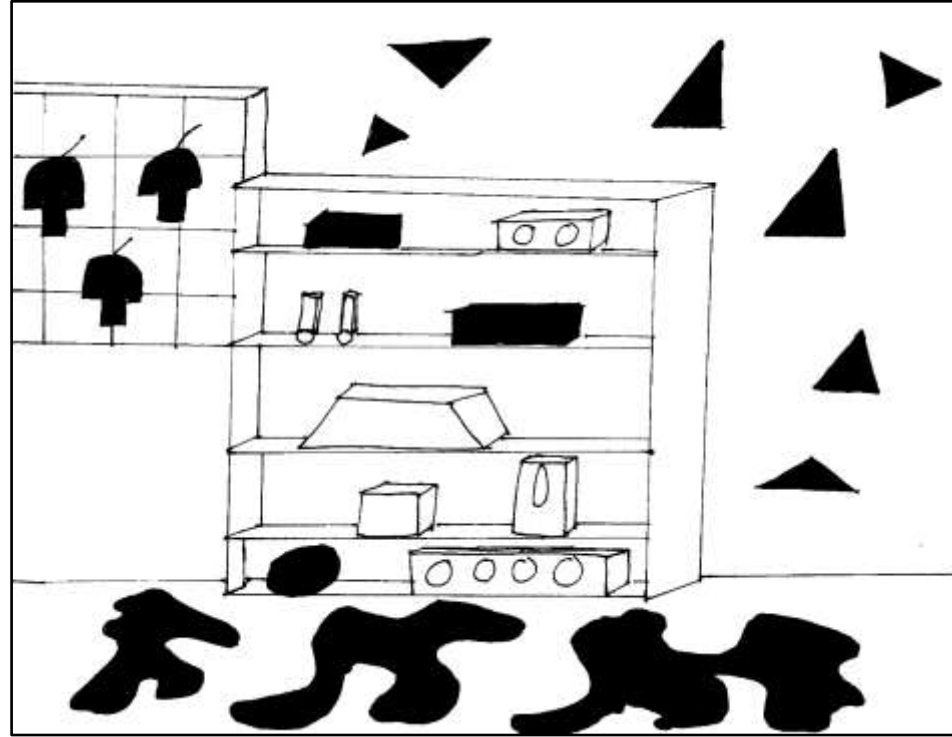


Image 2

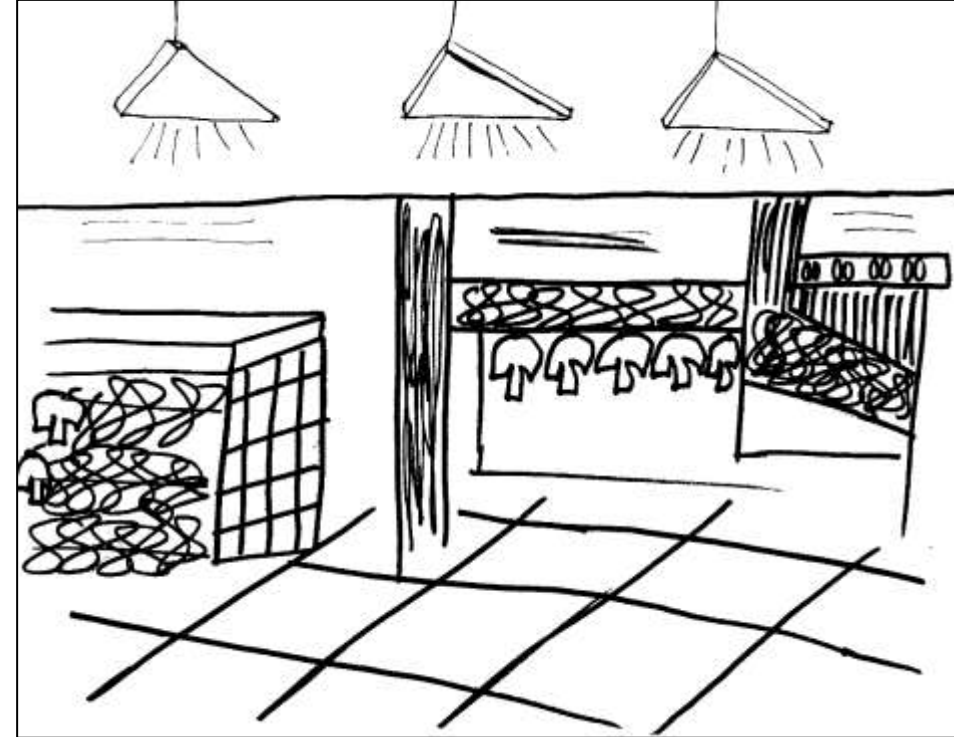
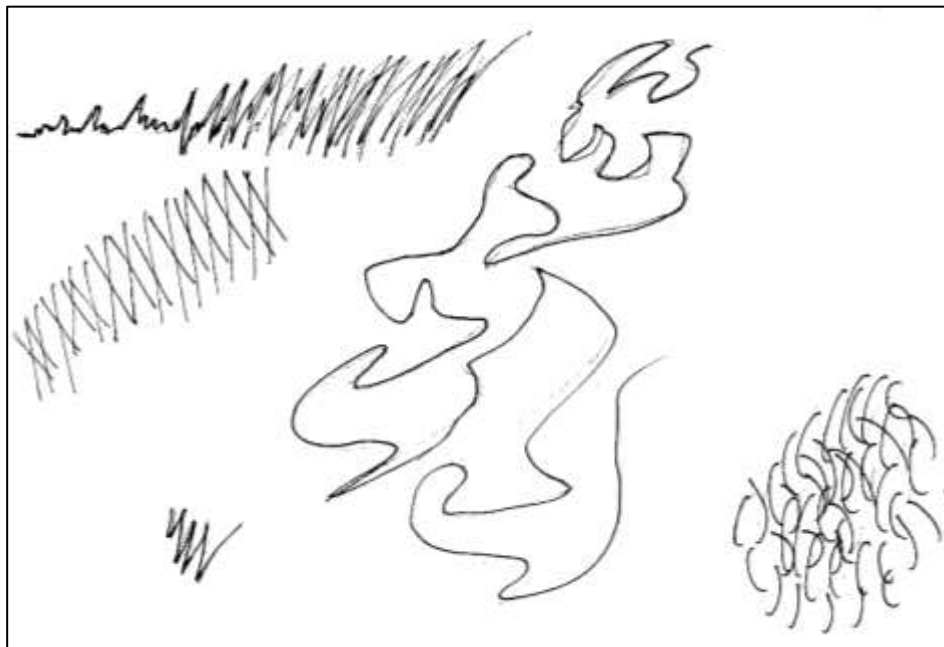


Image 3

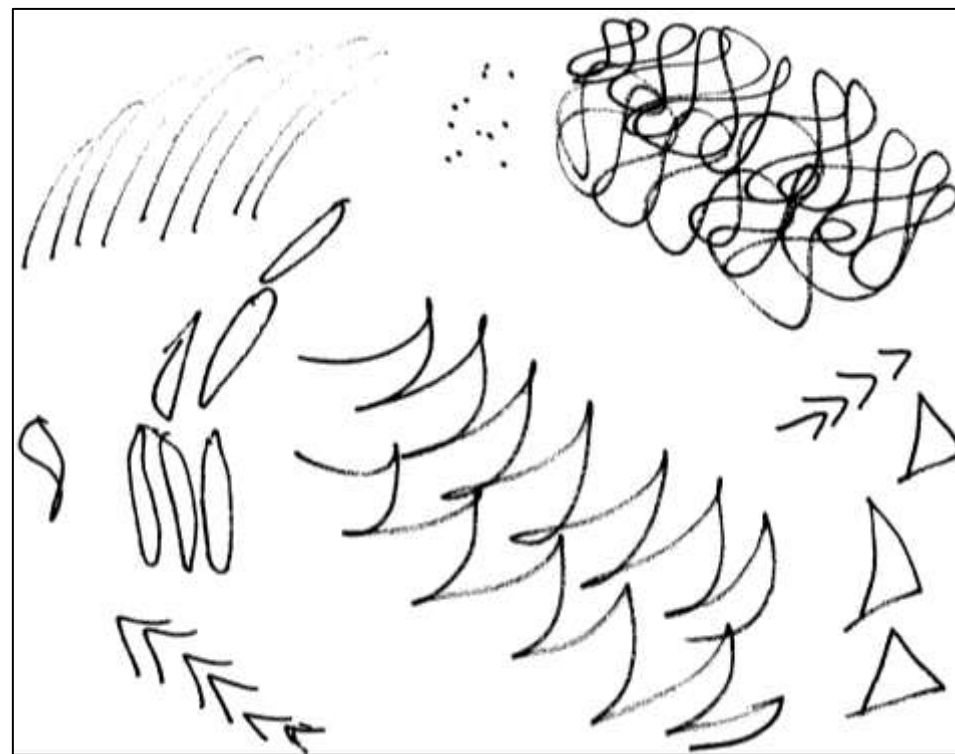
Assignment 4

Drawing to Music

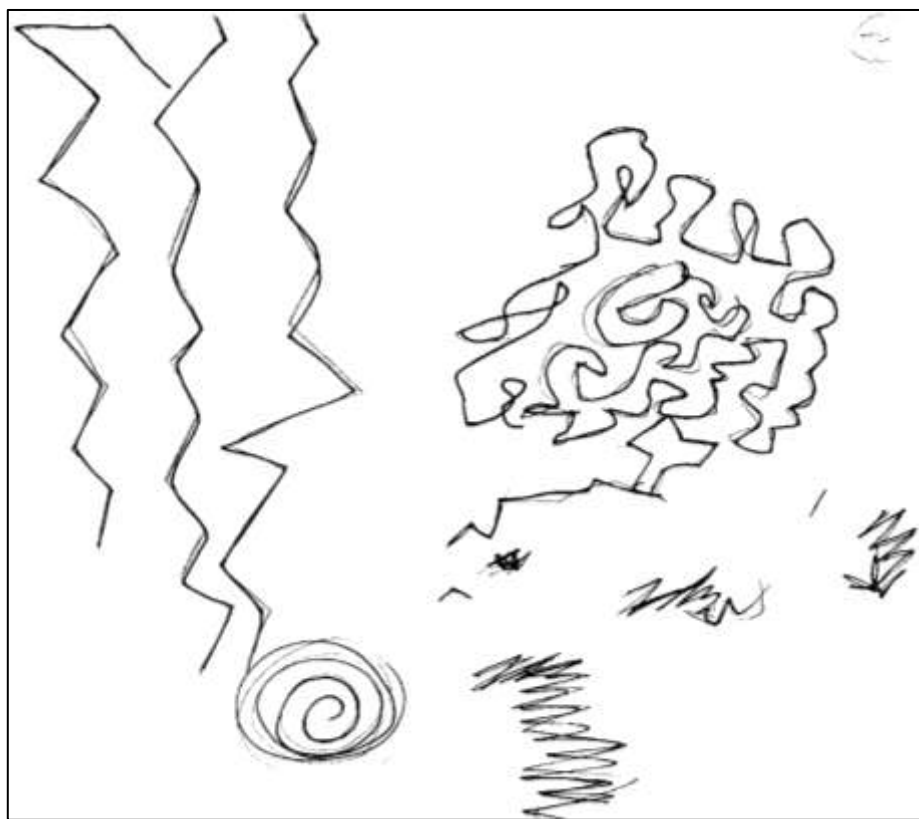
Inspiration Design 1



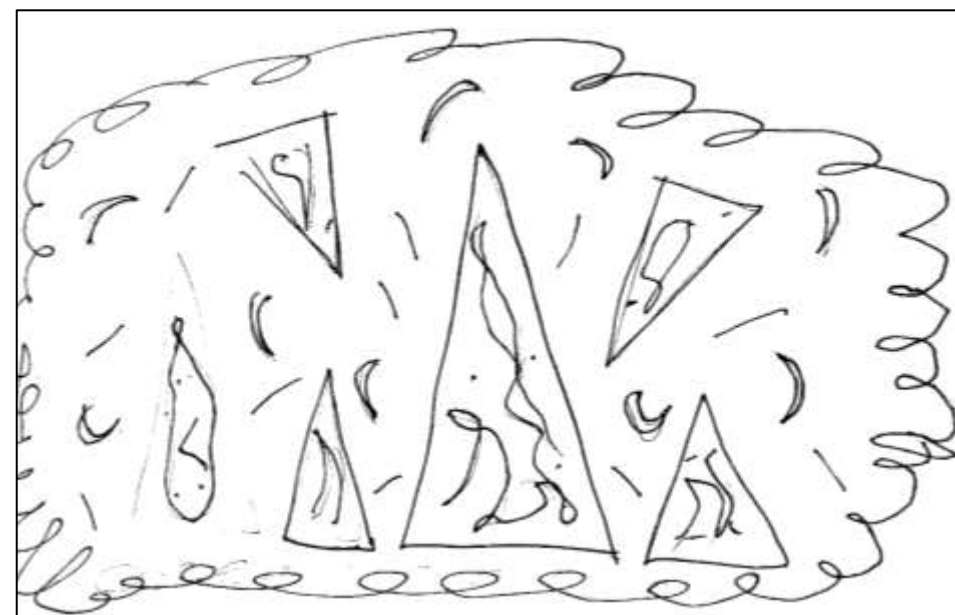
Inspiration Design 2



Inspiration Design 3



Inspiration Designs all combined into one



Corey Eads

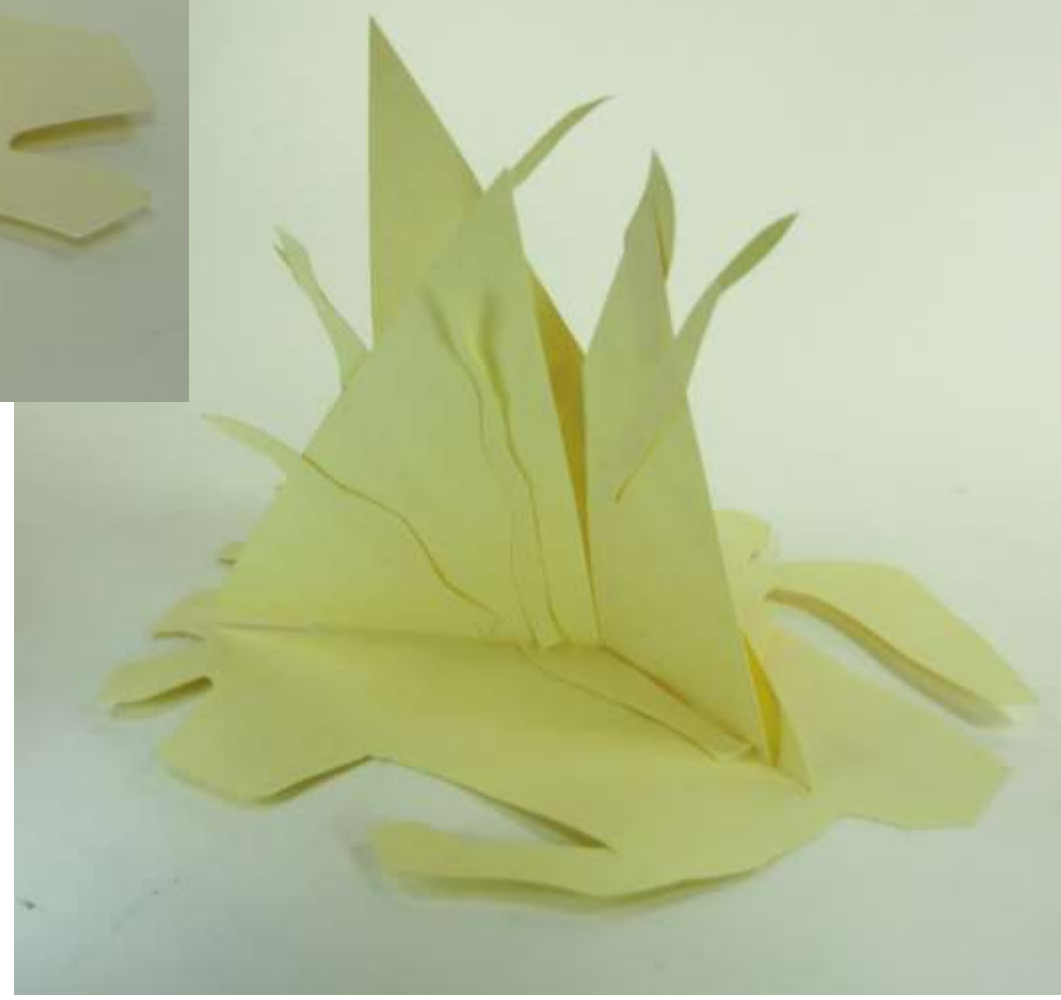
IDSN 2102 F19

Assignment 5

Music Model



View 1



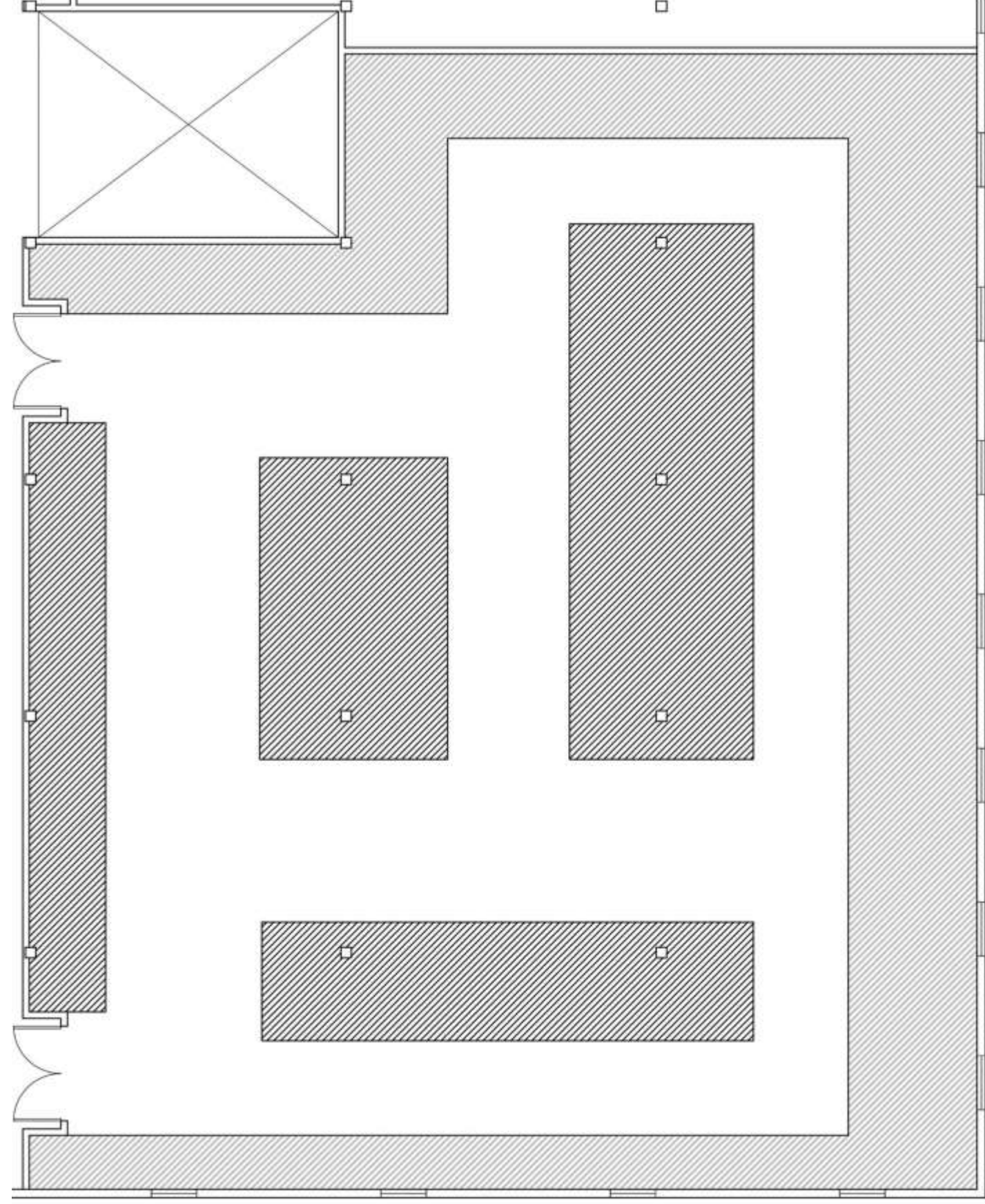
View 2

Corey Eads

IDSN 2102 F19

Assignment 6

Circulation Plans

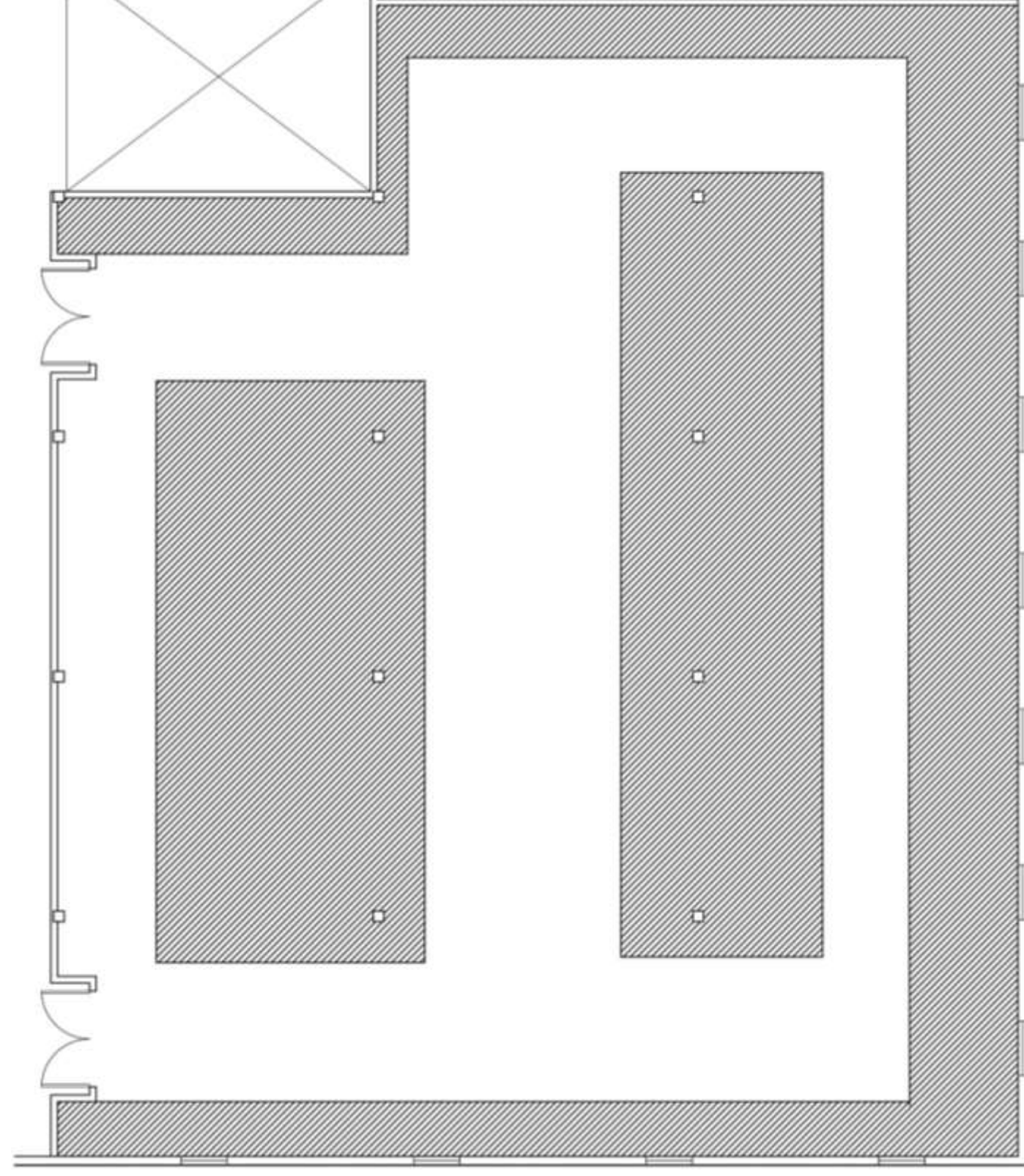


Corey Eads

IDSN 2102 F19

Assignment 6

Circulation Plans



Corey Eads

IDSN 2102 F19