




Carli Garrett

Portfolio 1

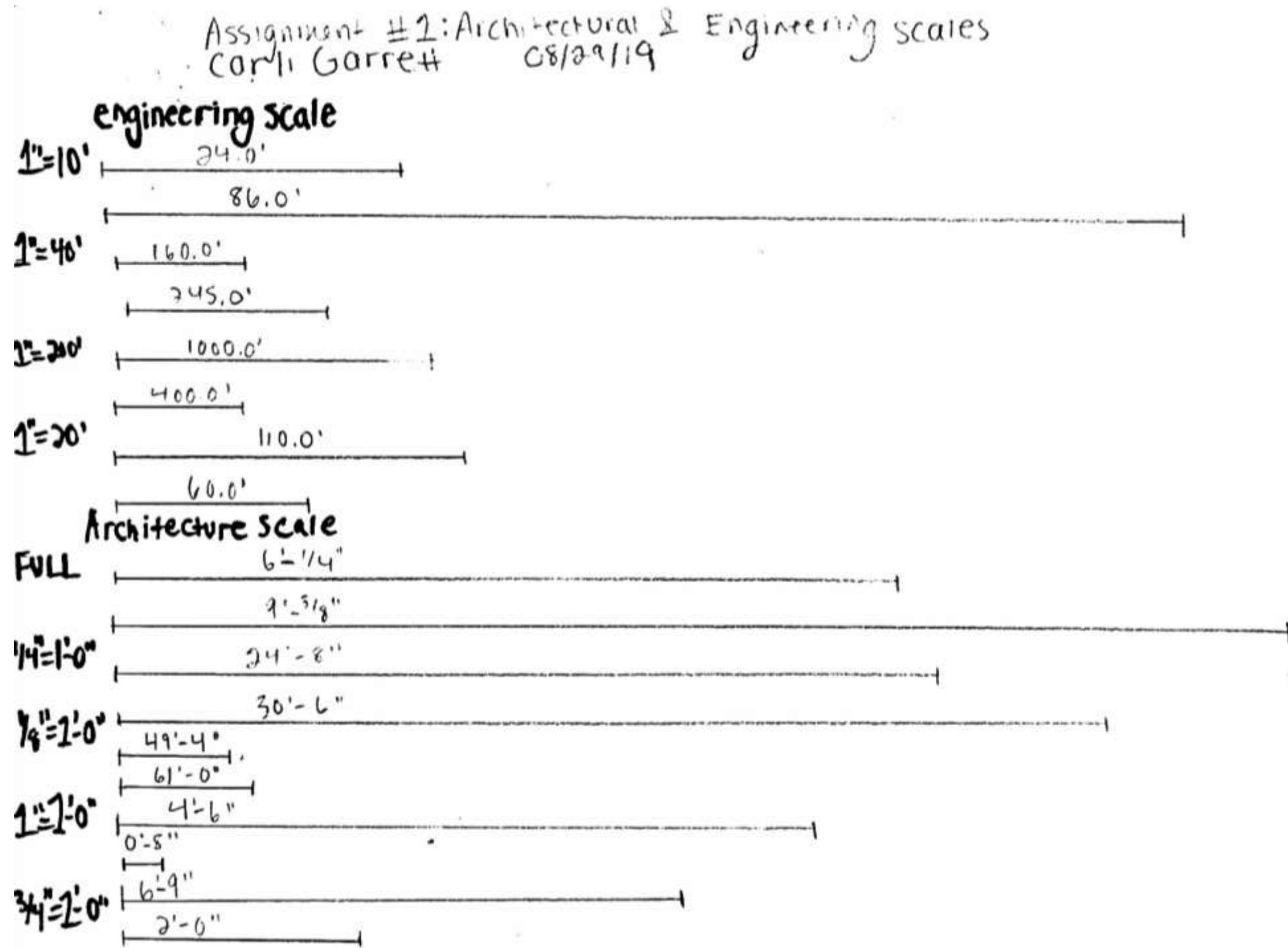
IDSN 2102, Professor Gustina

24, September 2019



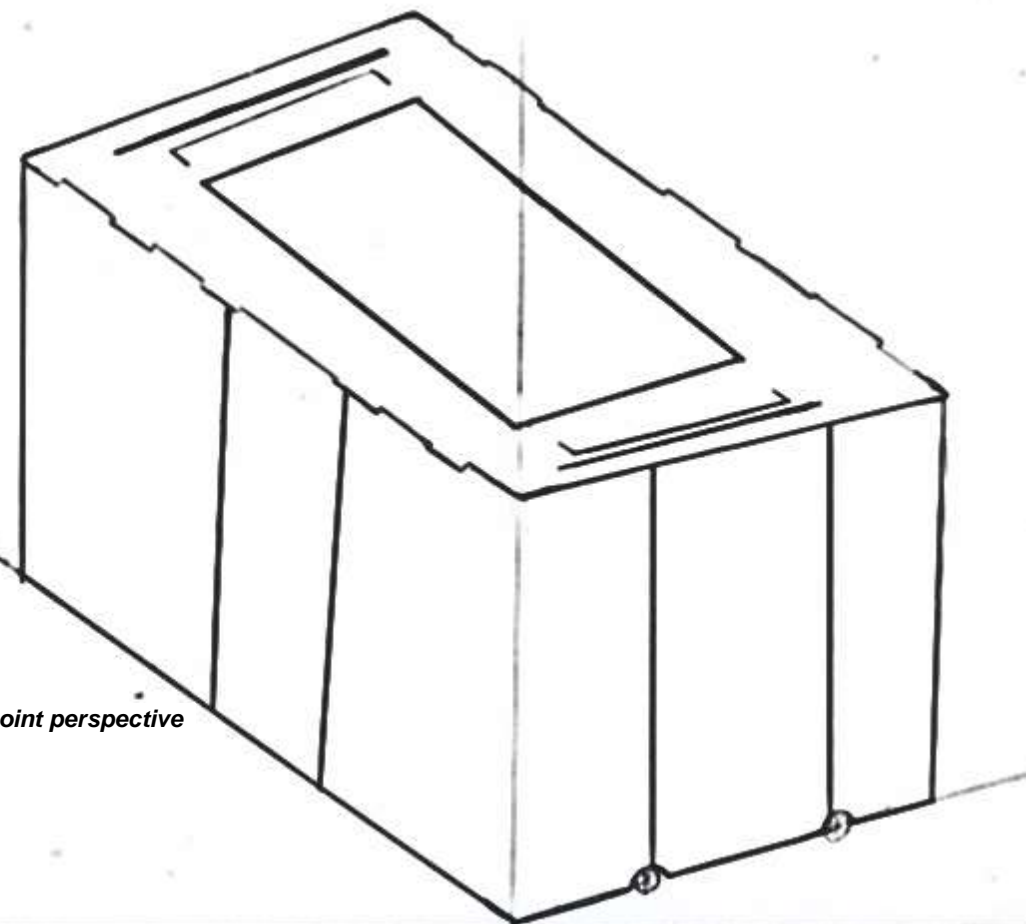
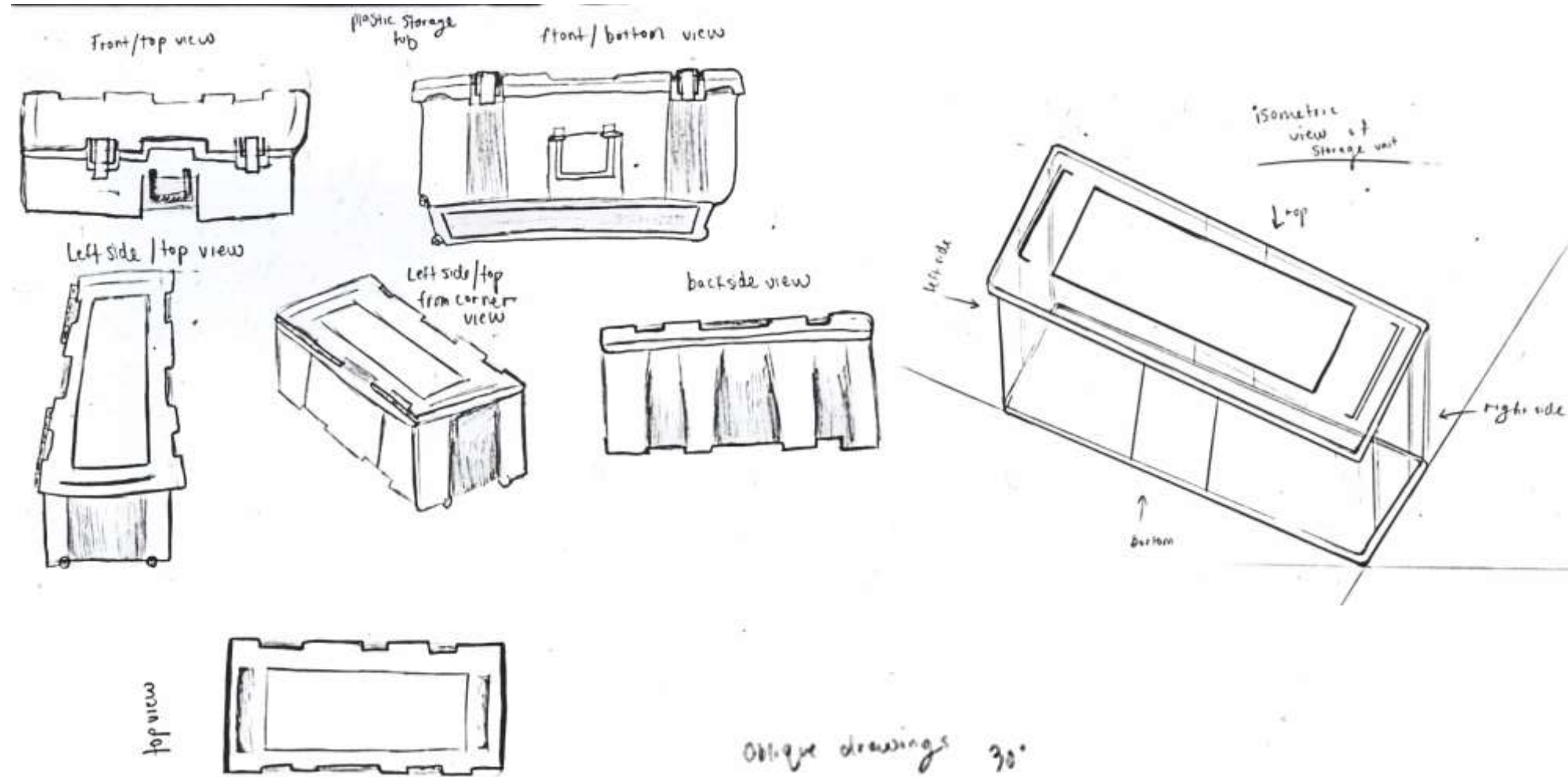
Assignment 1 – Quick sketches & Competencies

This assignment helped us to understand and perceive the different uses of an Architectural and Engineering scale.



Assignment 2 – Quick sketches & Competencies

This assignment helped show the different amount of angles that an object can be viewed at including; isometric view, orthographic view, oblique view, and a perspective.



Assignment 3 – Photographing and Interiors

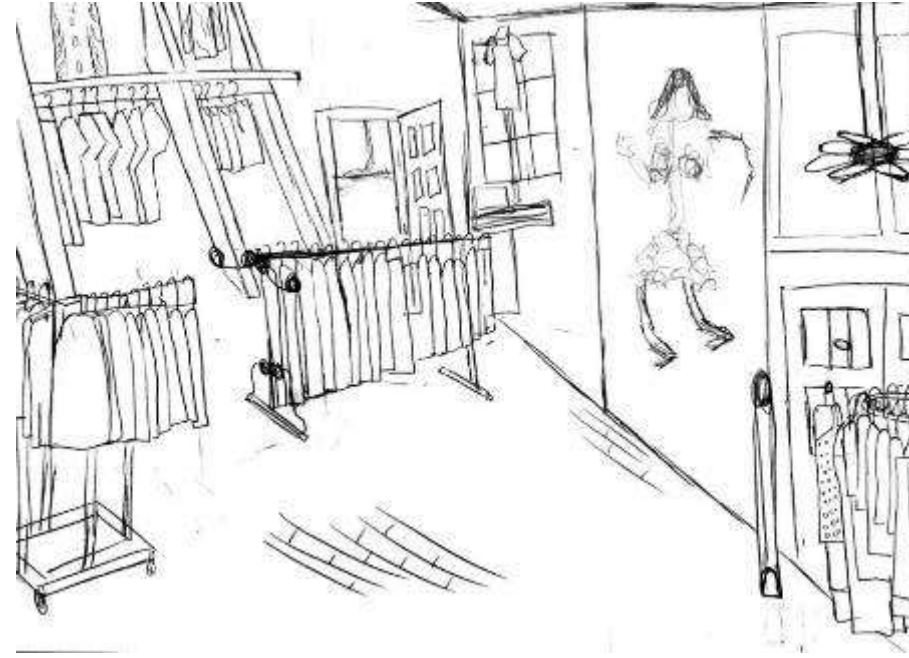
This assignment was only the first part of assignment 3. It involved going out to stores and taking photos of interior areas where you feel comfortable shopping alone at, shopping with friends, and shopping alone with food or drink.



Carli Garrett IDSN 2102 F19

Assignment 3 – Activity Space Studies

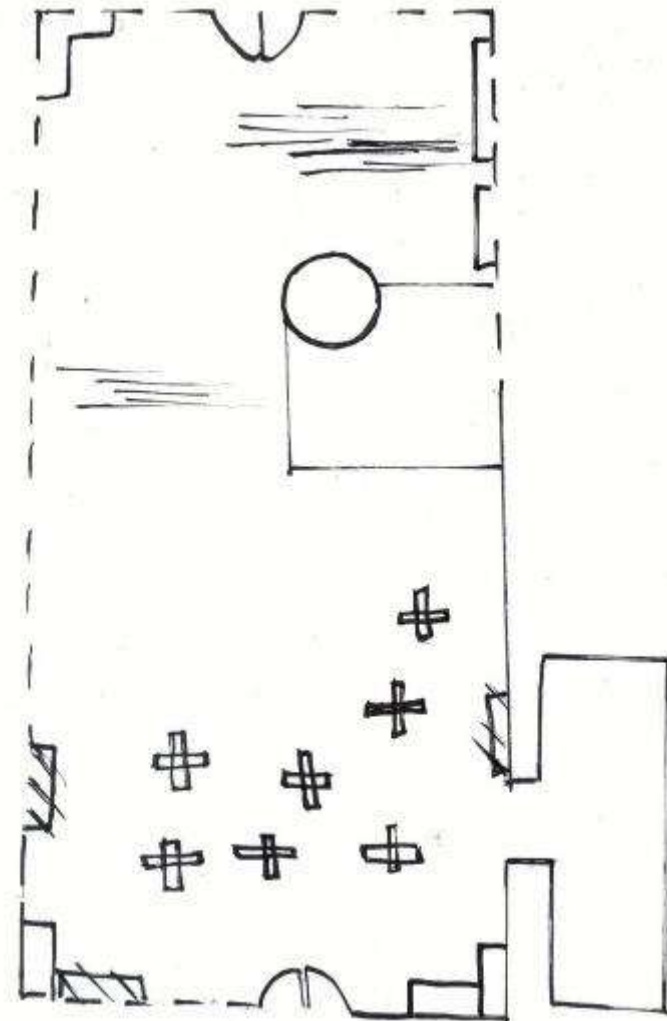
This assignment included an original interior perspective, remodeled plan, section, and perspective with the 3D model included at a store where you feel comfortable shopping alone.



Two point perspective



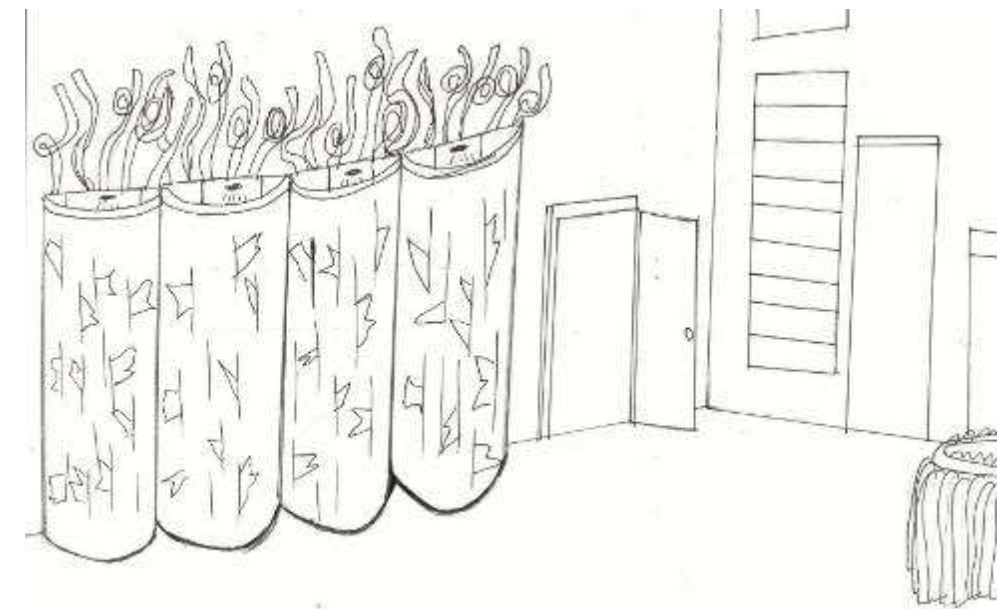
Section with color



Floor Plan



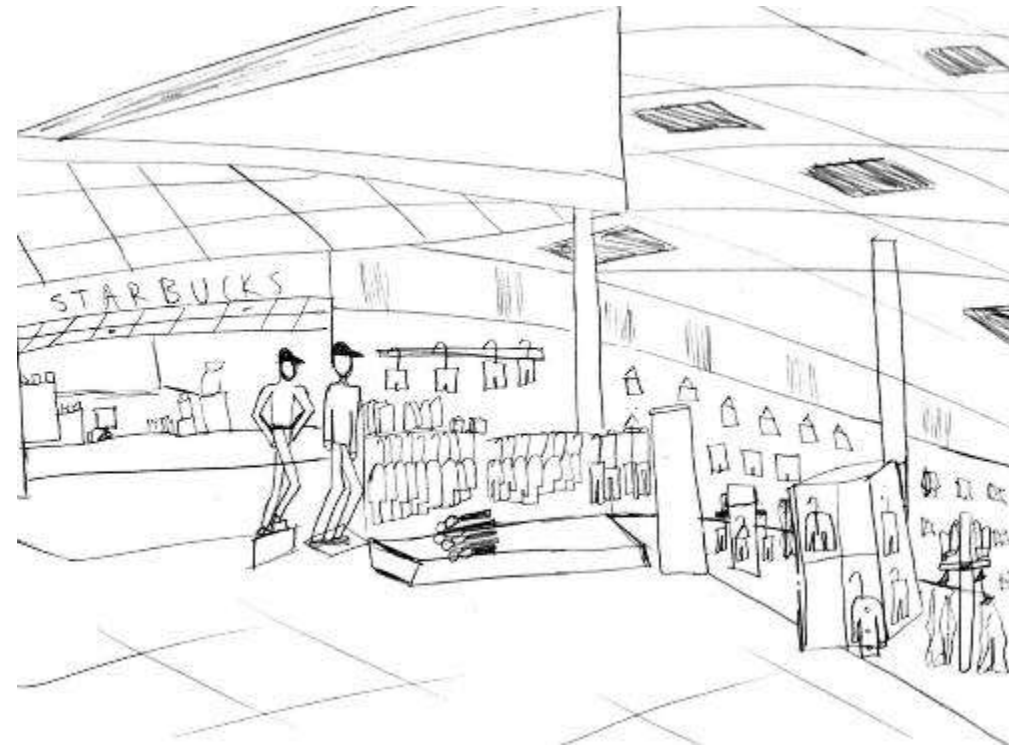
Two point perspective with color



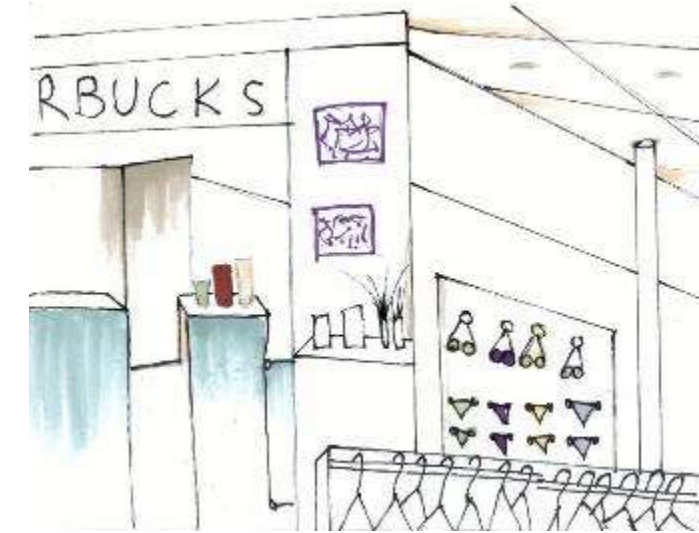
Two point perspective with lighting model

Assignment 3 – Activity Space Studies

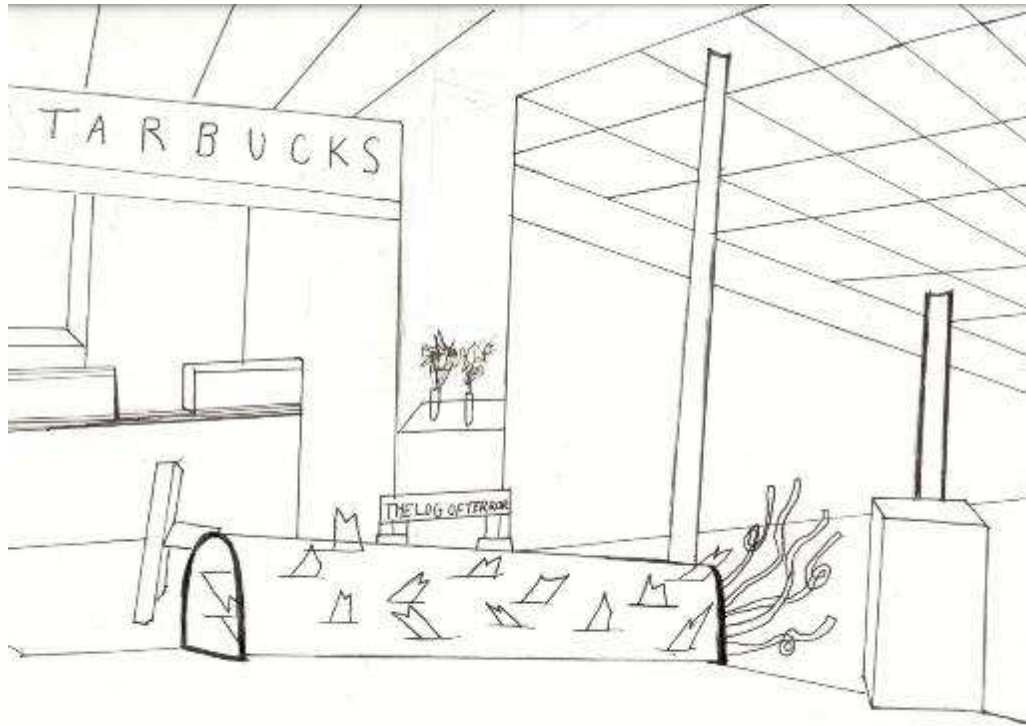
This assignment included an original interior perspective, remodeled plan, section, and perspective with the 3D model included at a store where you feel comfortable shopping alone with food or drink.



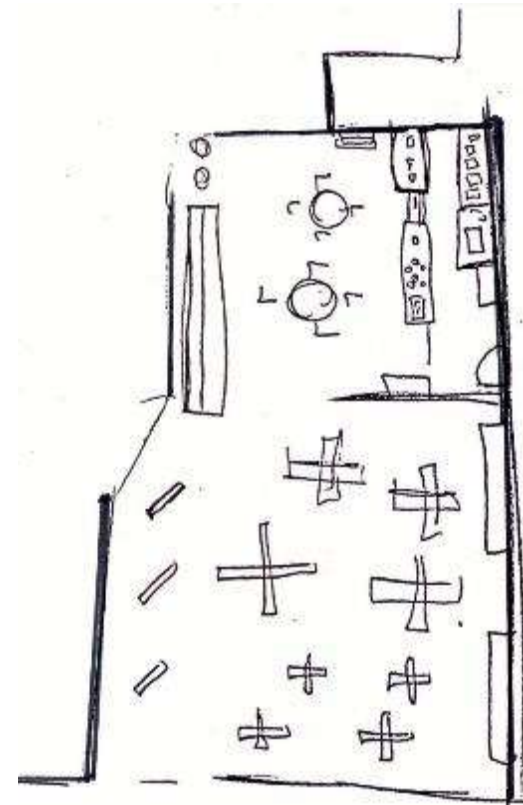
Two point perspective



Elevation with color



Two point perspective with lighting model



Floor Plan



Two point perspective with color

Assignment 3 – Activity Space Studies

This assignment included an original interior perspective, remodeled plan, section, and perspective with the 3D model included at a store where you feel comfortable shopping with friends.



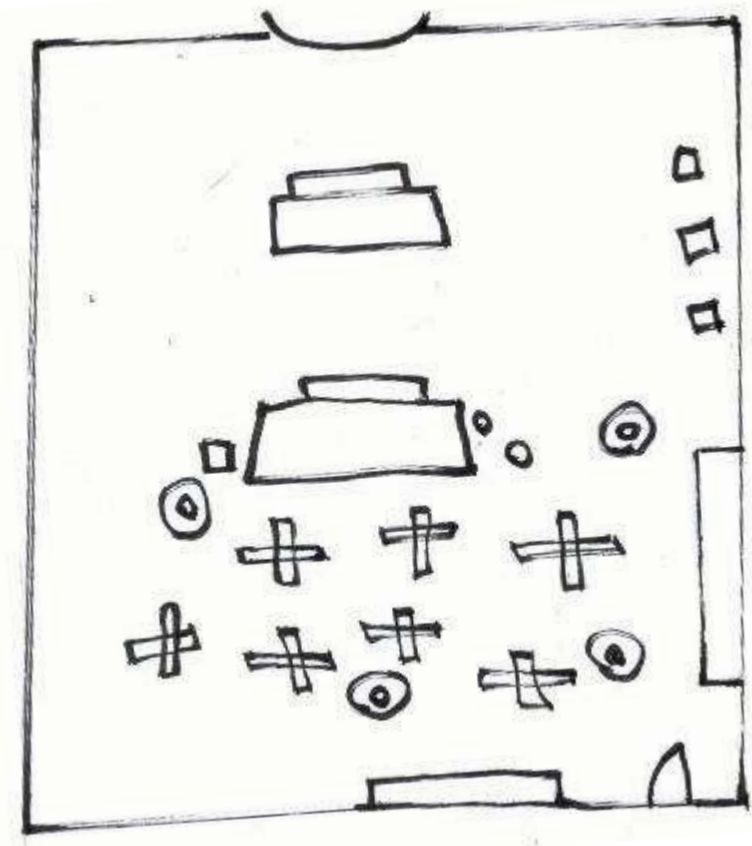
Elevation with color



Two point perspective



Two point perspective with color



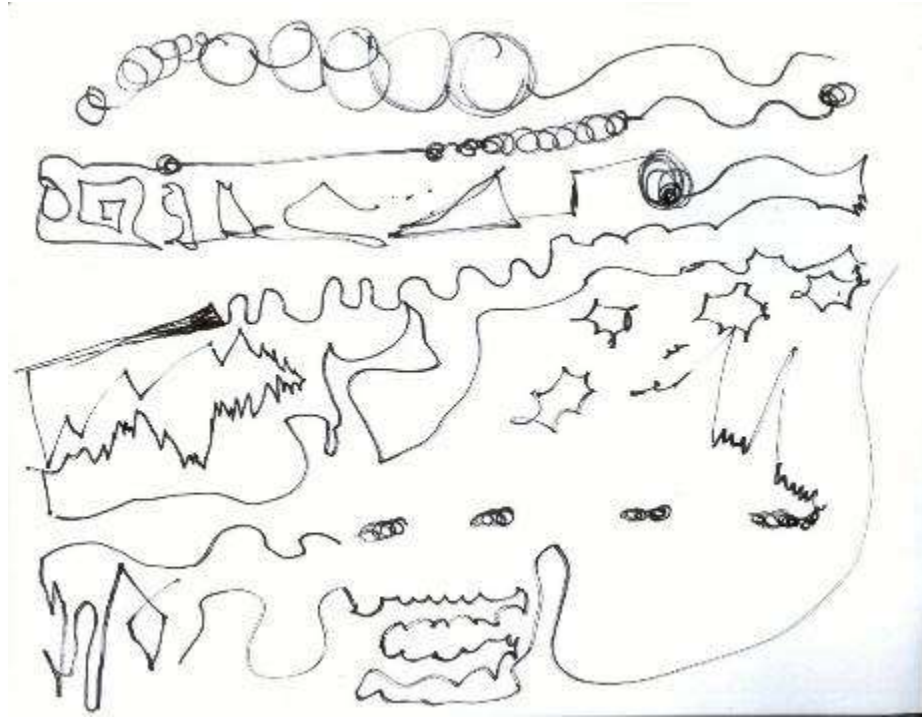
Floor Plan



Two point perspective with lighting model

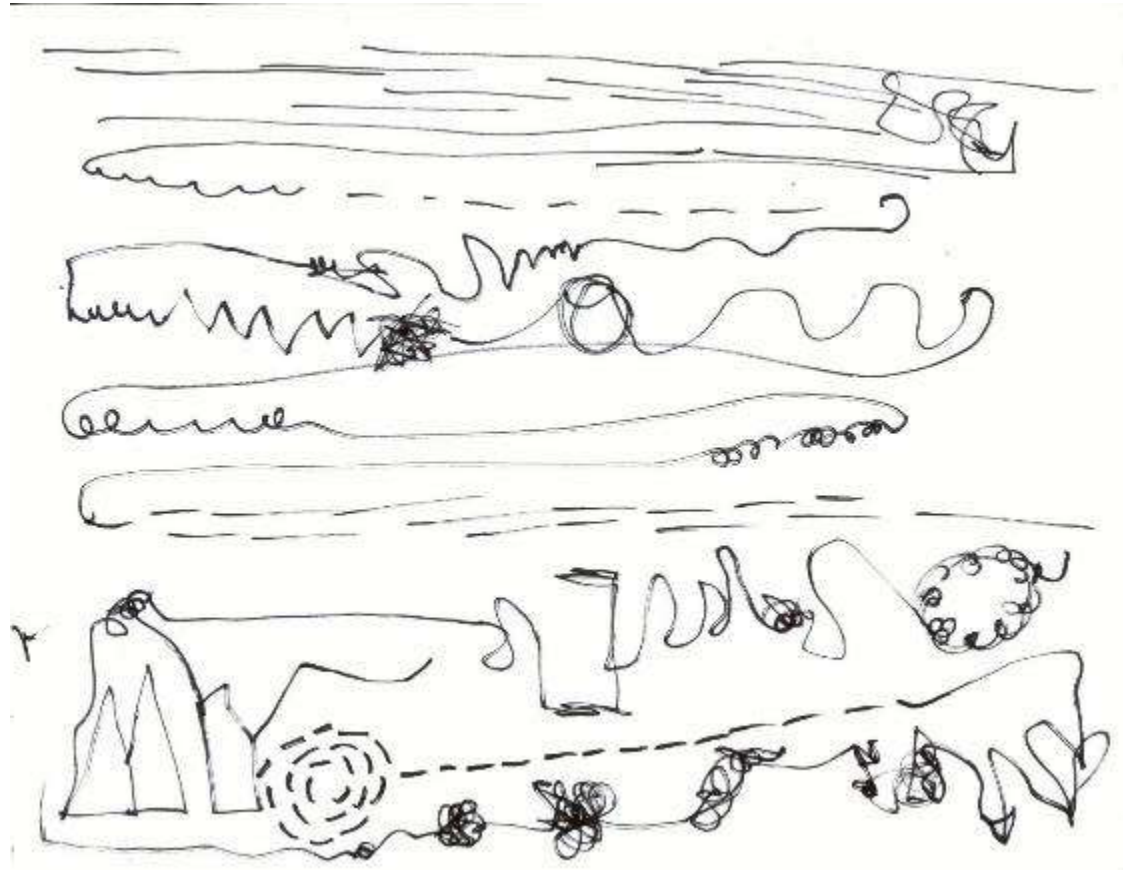
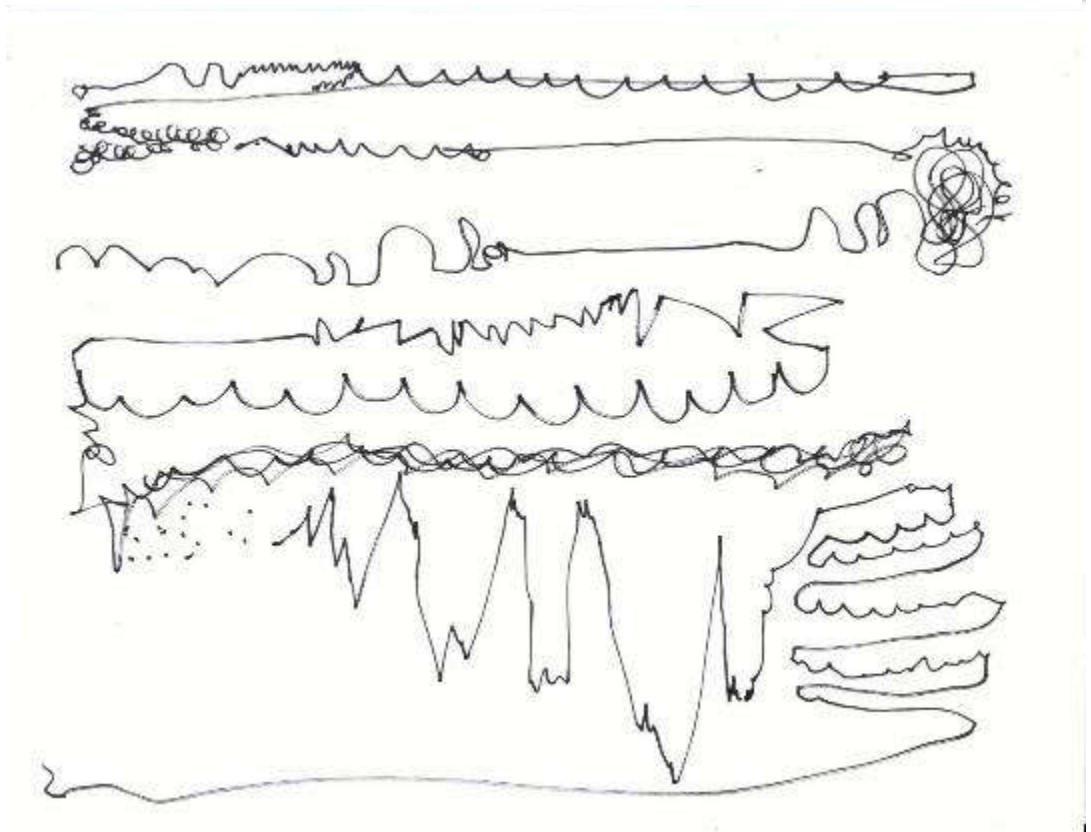
Assignment 4 – Drawing to Music

During this assignment, a song was played and analyzed through our drawings.



Drawing to music 1

Drawing to music 2



Drawing to music 3



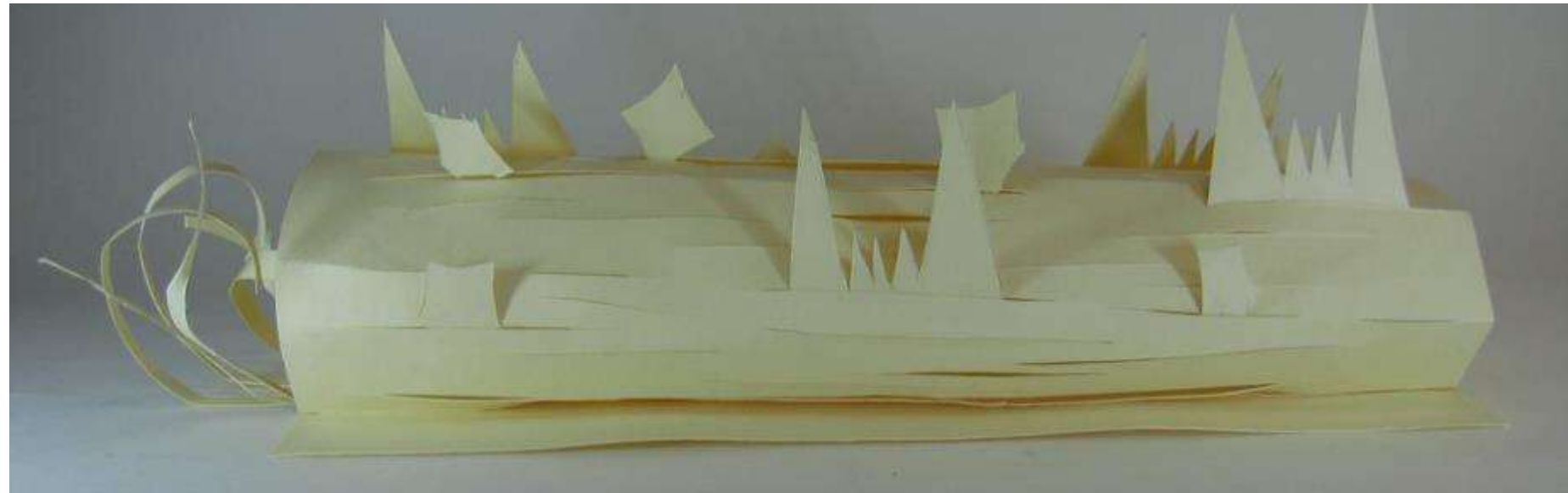
Drawing to music 4

Assignment 5 – Modeling to Music

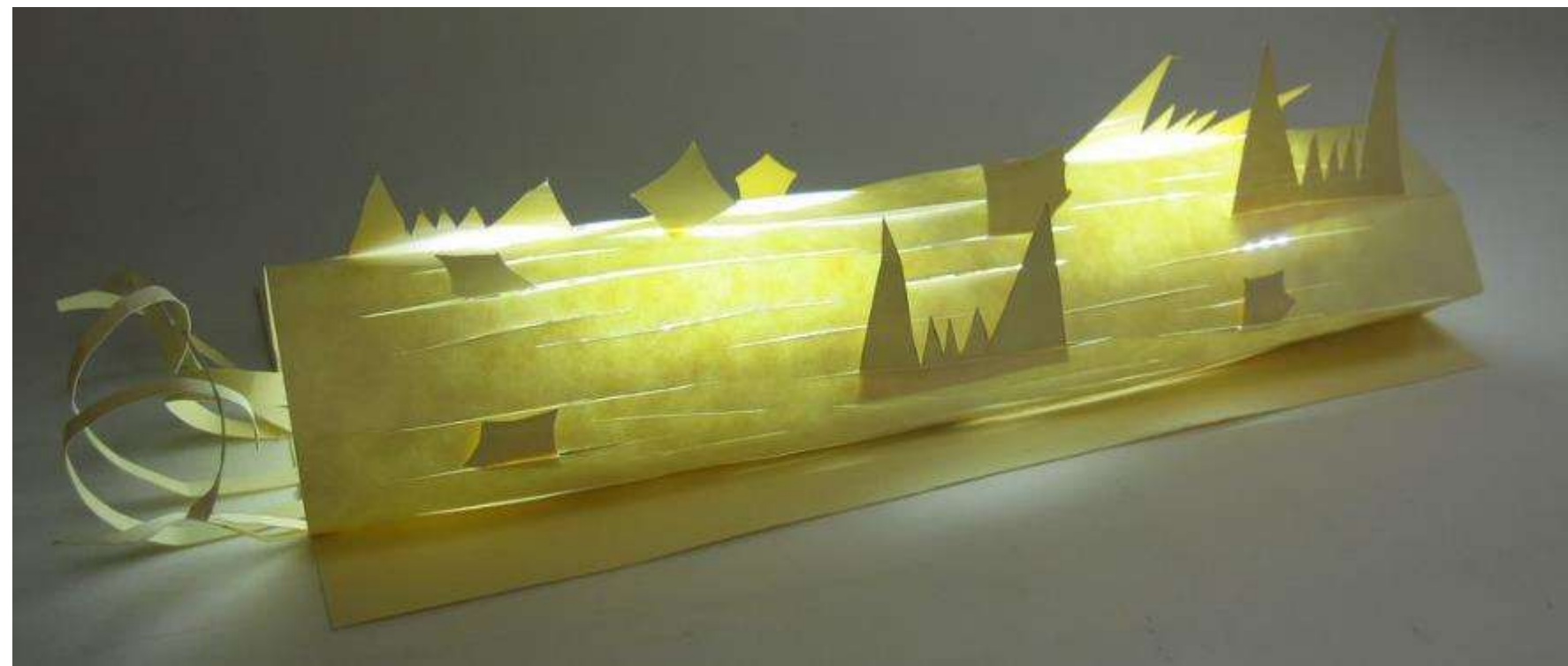
After completing assignment 4, a 3D model was comprised using abstract lines from our previous drawings.



Lighting model 1



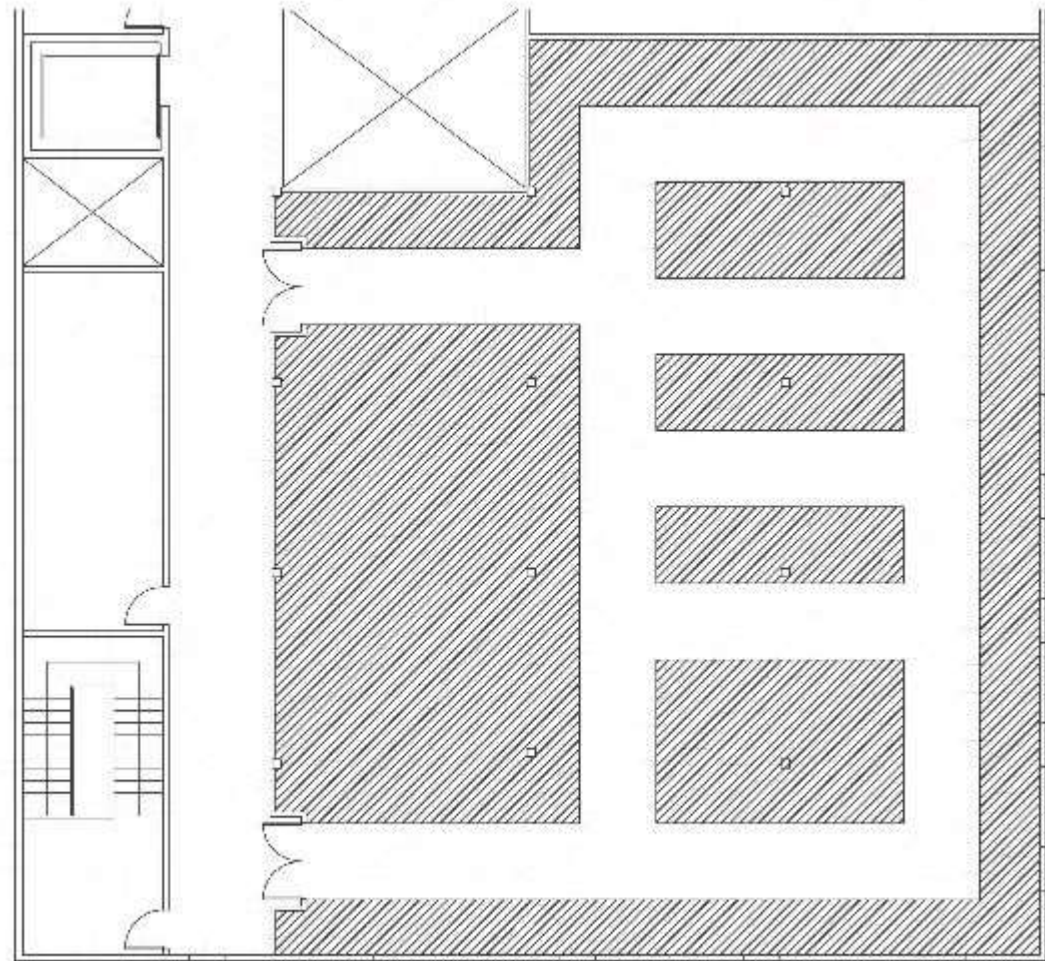
Lighting model 2



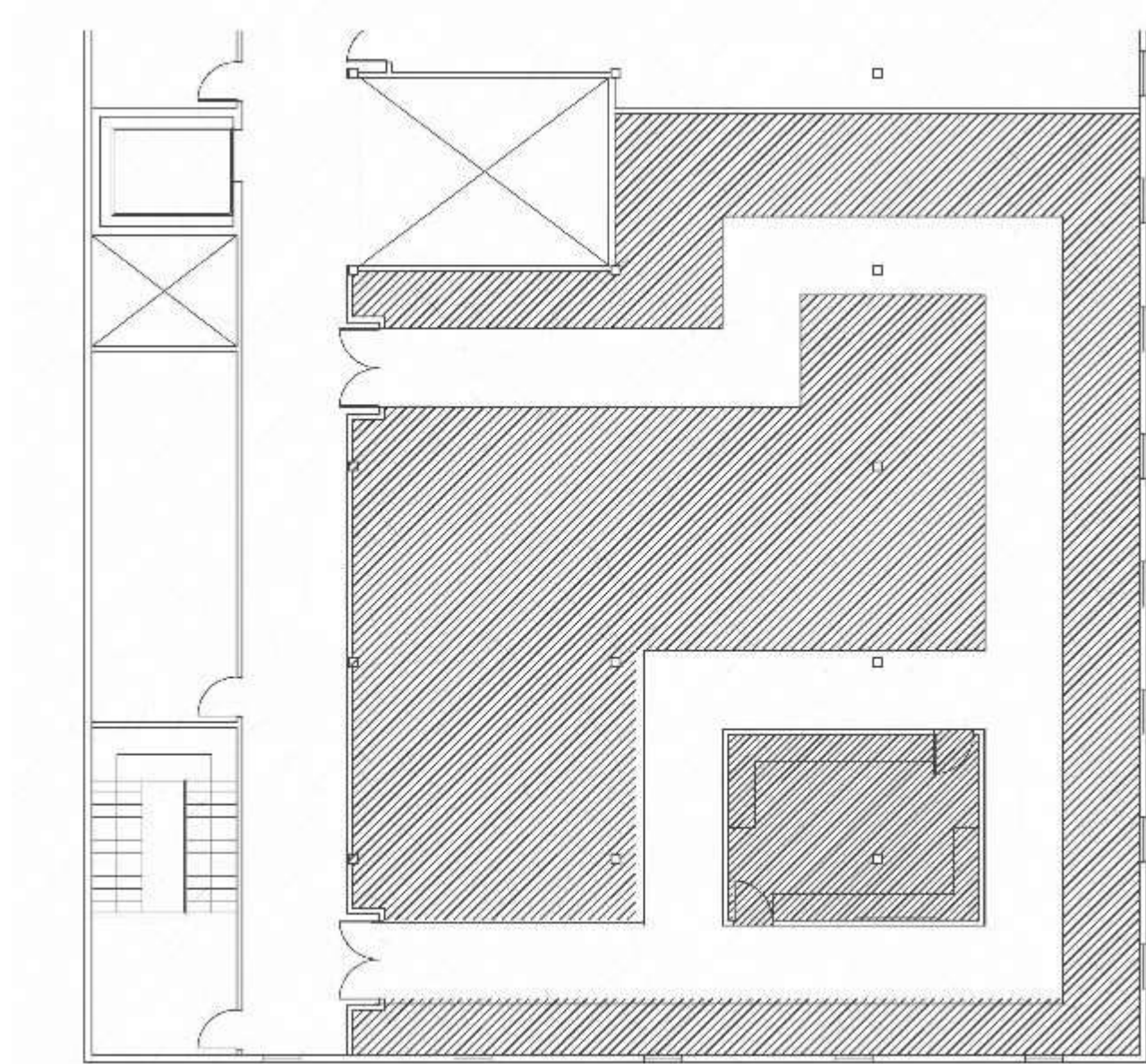
Lighting model 3

Assignment 6 – AutoCAD Circulation Plans

Circulation plans were created in AutoCAD to show the routes around the building.



Circulation 1



Circulation 2