

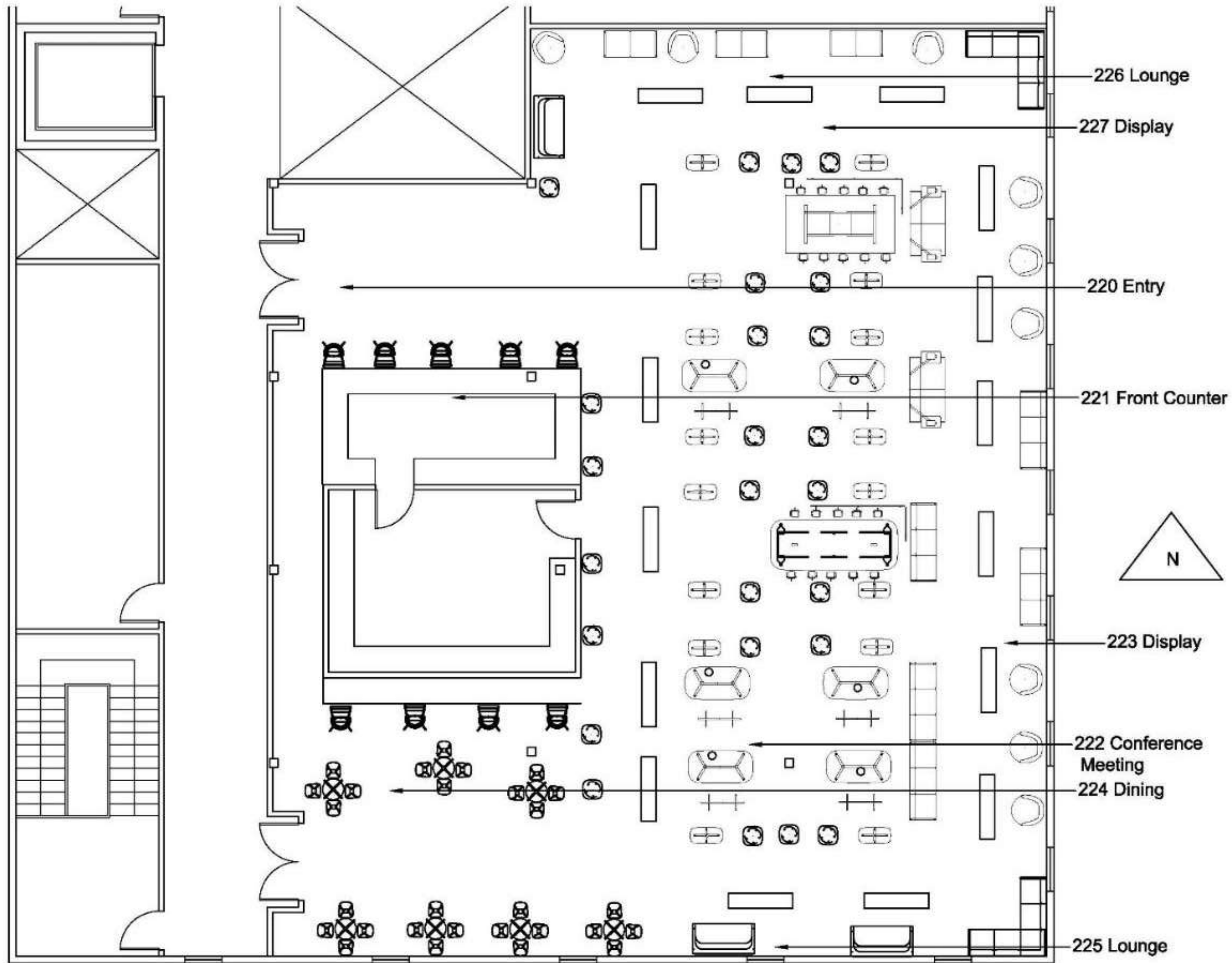
Portfolio3

Carli Garrett

IDSN 2102

November 18, 2019

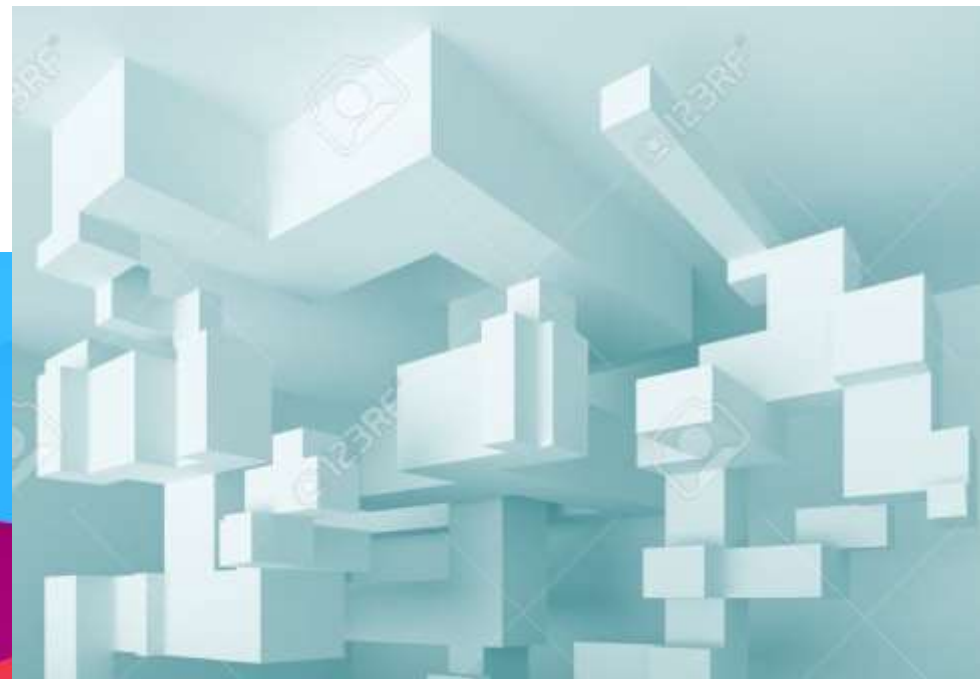
Assignment 12
AutoCAD Floor Plan



Carli Garrett IDS N 2102 F 19

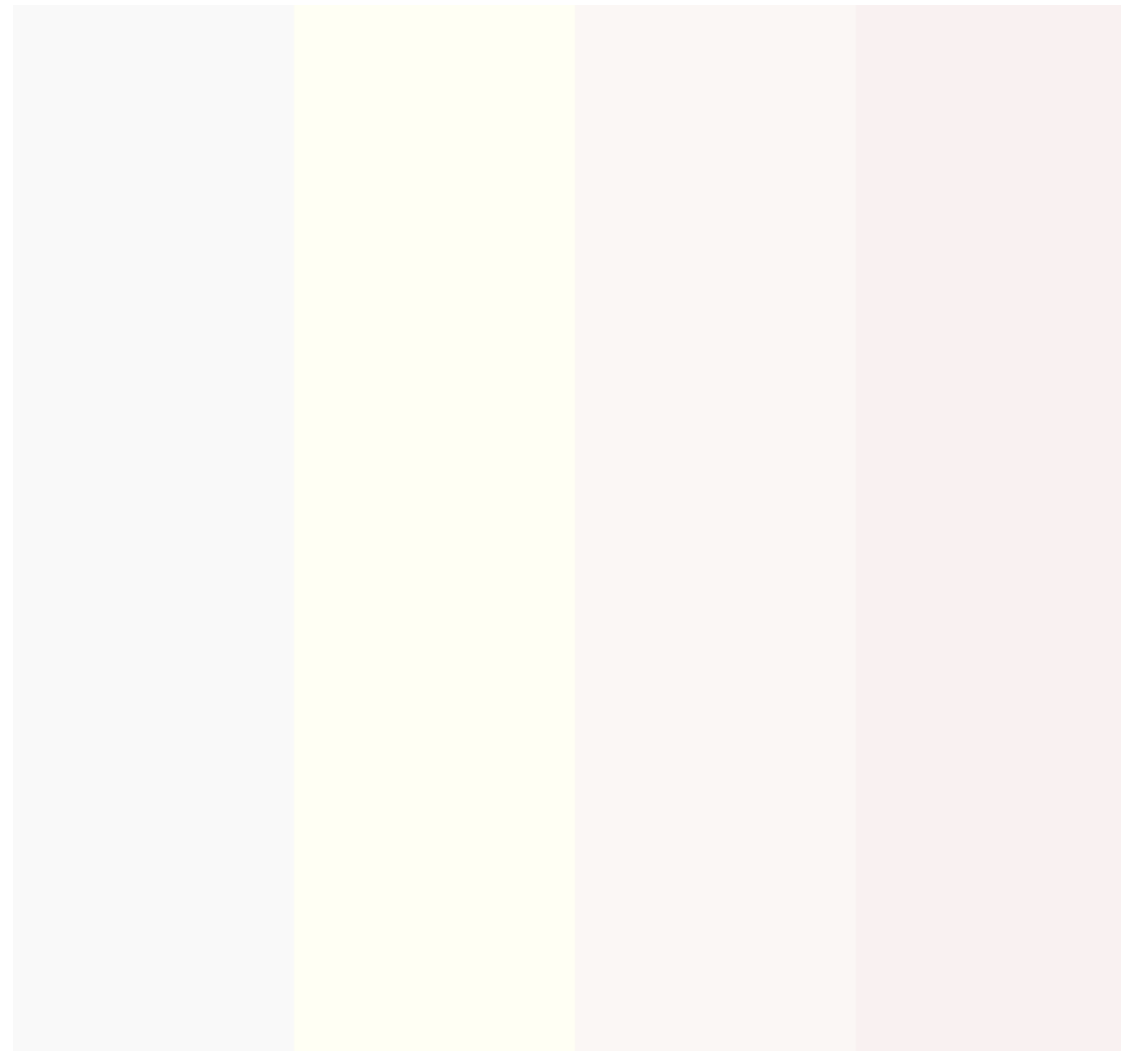
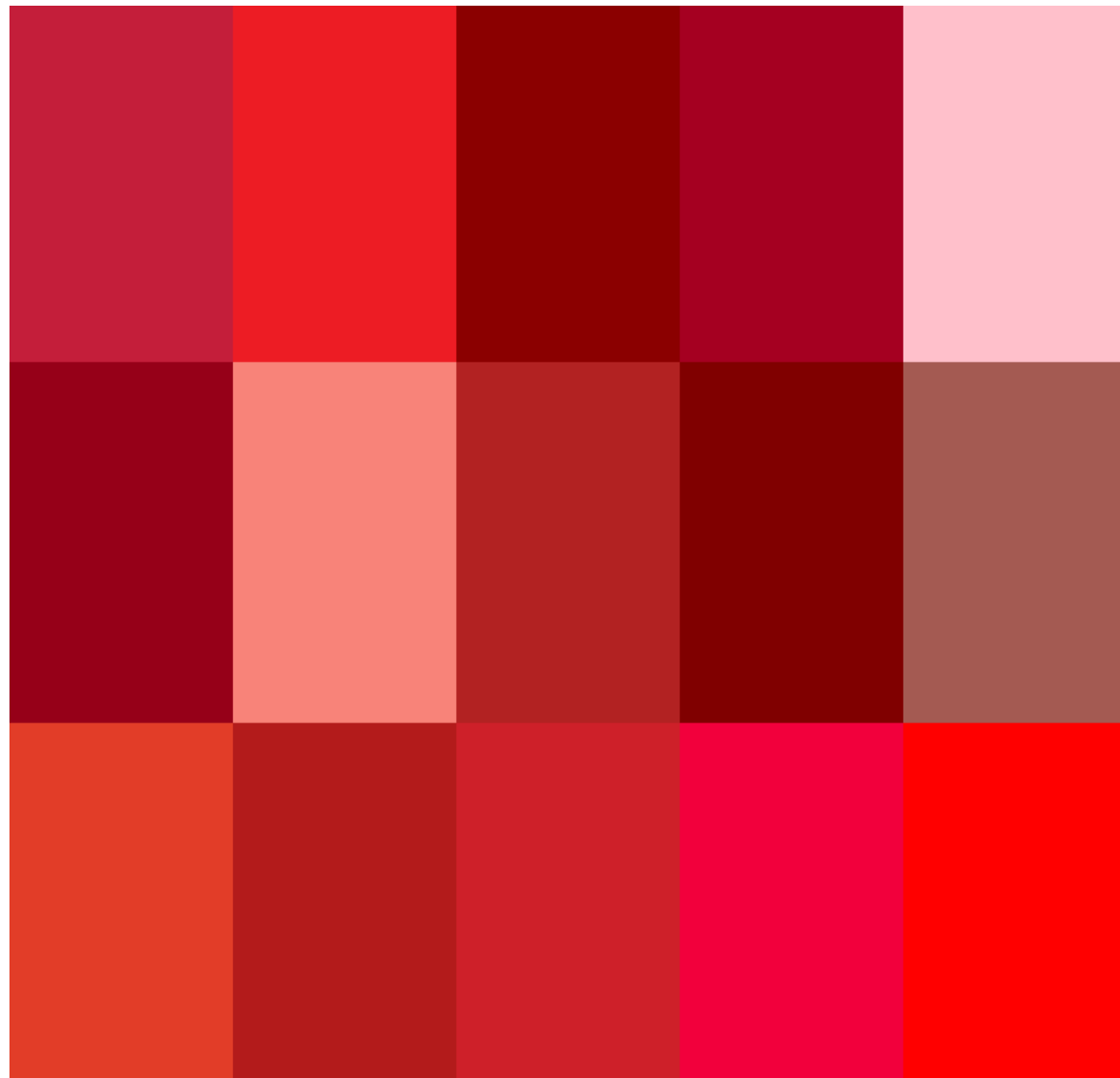
Pure Abstraction

- Abstract architectural and structural details
- Using geometric forms and sharp edges
- To separate or withdraw each object from something else
- Order, purity, simplicity
- The pieces of artwork from students will visually separate it from another piece of artwork
- Formal qualities of the piece of art is just as important as its representational qualities
- Shows form, line, color, light, and texture



Color Rationale

- Shades of Red
- Maroon
- Burgundy
- Brown
- Pink
- White
- Cream
- Gray



The color red is being used to emphasize geometric forms and also guide the viewer's eyes to different pieces of artwork. This color singles out simple geometric objects that possibly could have potential. This way people can navigate around the area smoothly, safely, and keeps the flow of movement