

Rebecca Hodges

Portfolio 1

IDSN 2102 F19

# Assignment 1

Line 86' ↘

Engineering Scale 1"=40'

Line 160' →

Line 245' →

Engineering Scale 1"=200'

Line 1000' →

Line 400' →

Engineering Scale 1"=10'

Line 24' →

Line 110' →

Line 60' →

Engineering ↑ Arch ↓

Arch. Scale Full

Line 6 1/4" →

Line 9 3/8" ↘

Arch. Scale 1/4"=1'0"

Line 24 1/8" →

Line 30' 6" →

Arch. Scale 1/8"=1'0"

Line 49' 4" →

Line 61' →

Arch. Scale 1"=1'0"

Line 4' 6" →

Line 0' 8" →

Arch. Scale 3/4"=1'0"

Line 6' 9" →

Line 2' 0" →

—Notes—  
Assignment 1

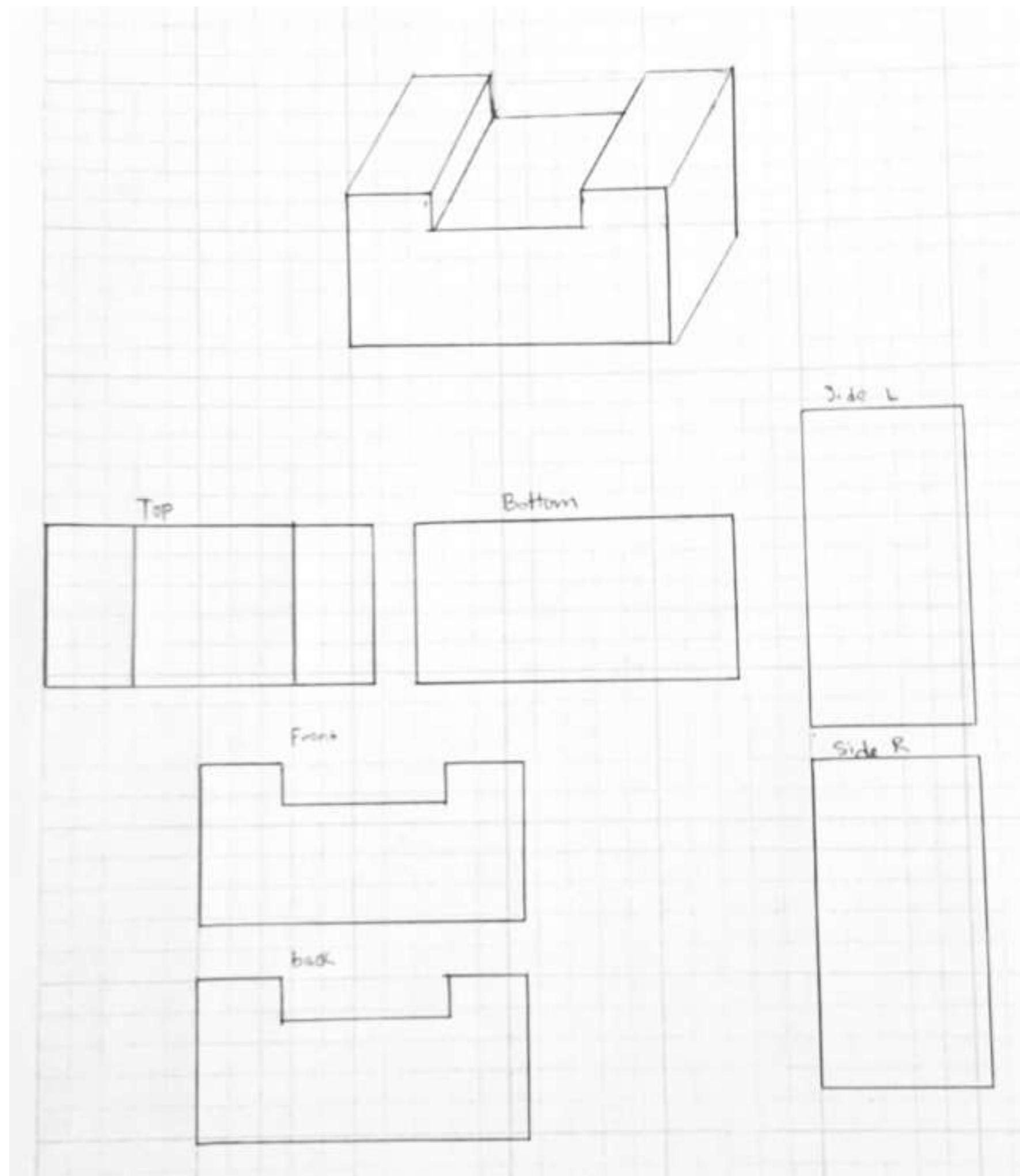
Rebecca Hodges

IDSN 2102 F19

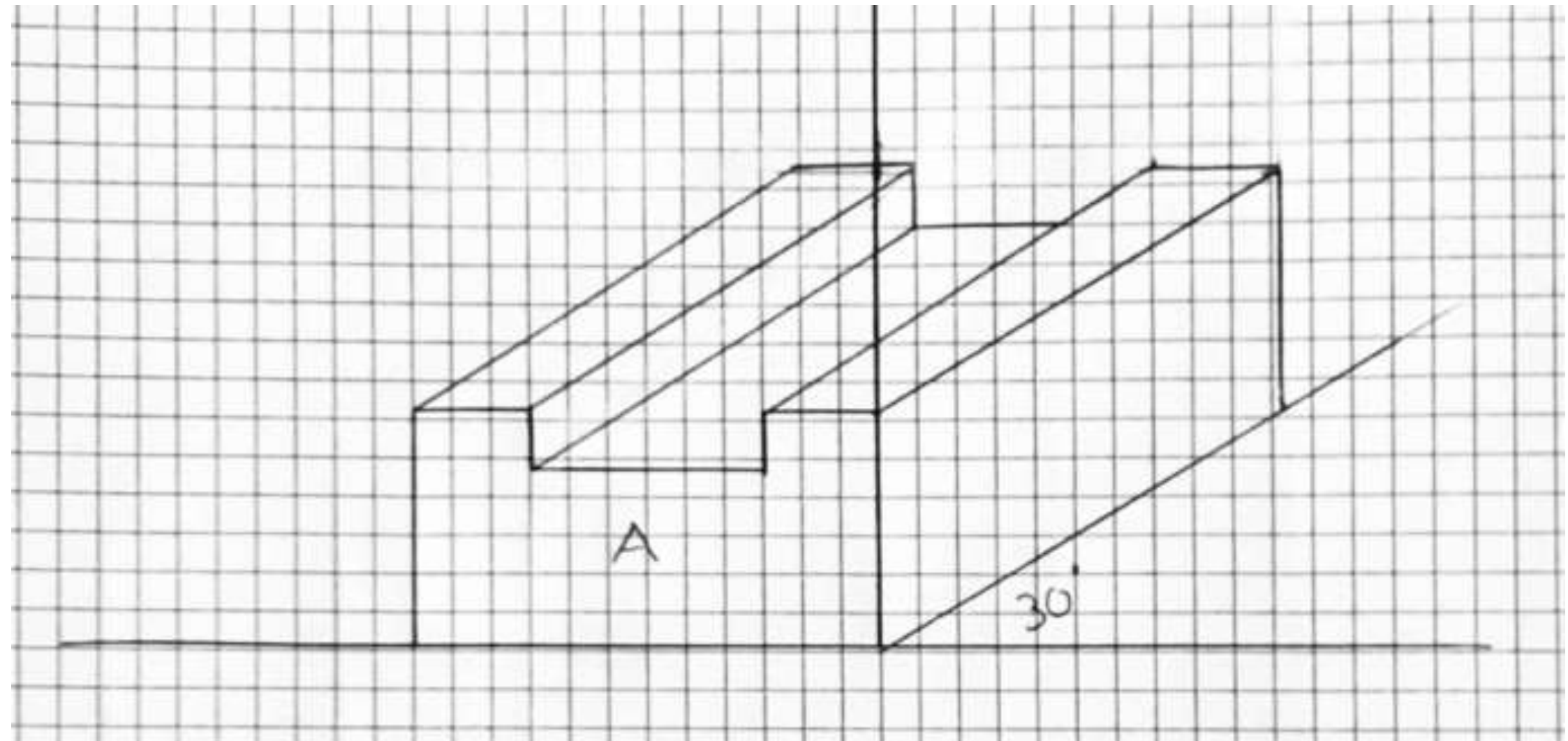
# Assignment 2A

Rebecca Hodges

IDSN 2102 F19



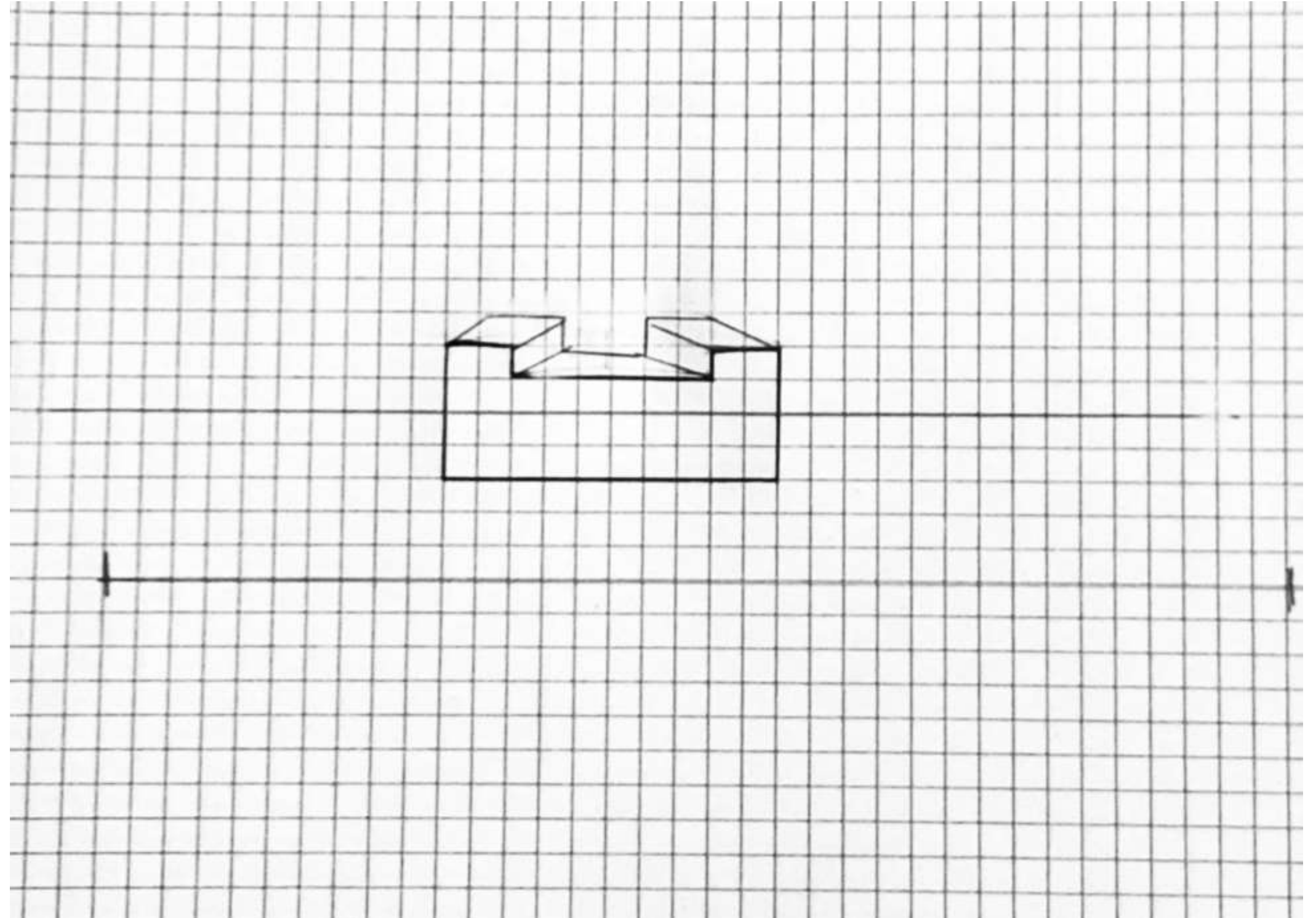
# Assignment 2B



Rebecca Hodges

IDSN 2102 F19

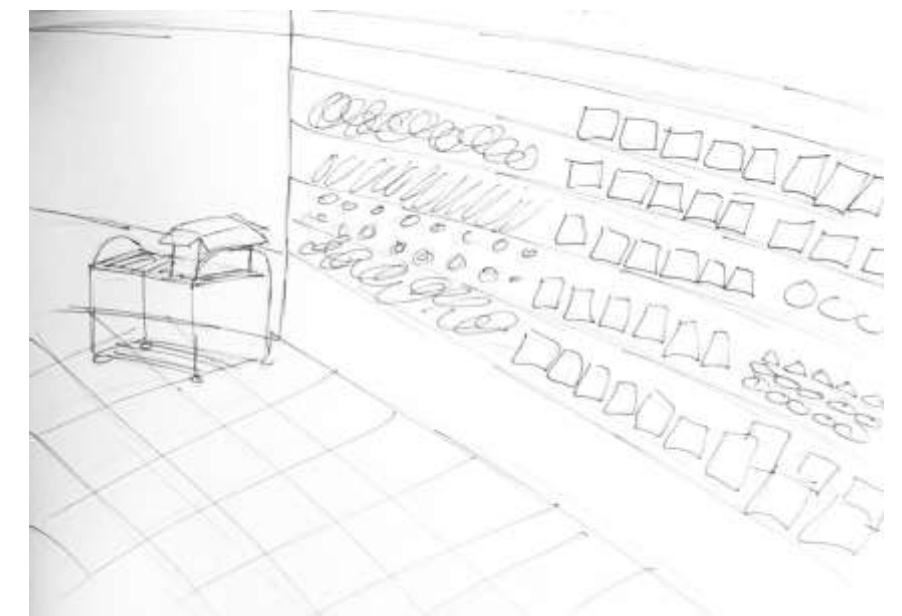
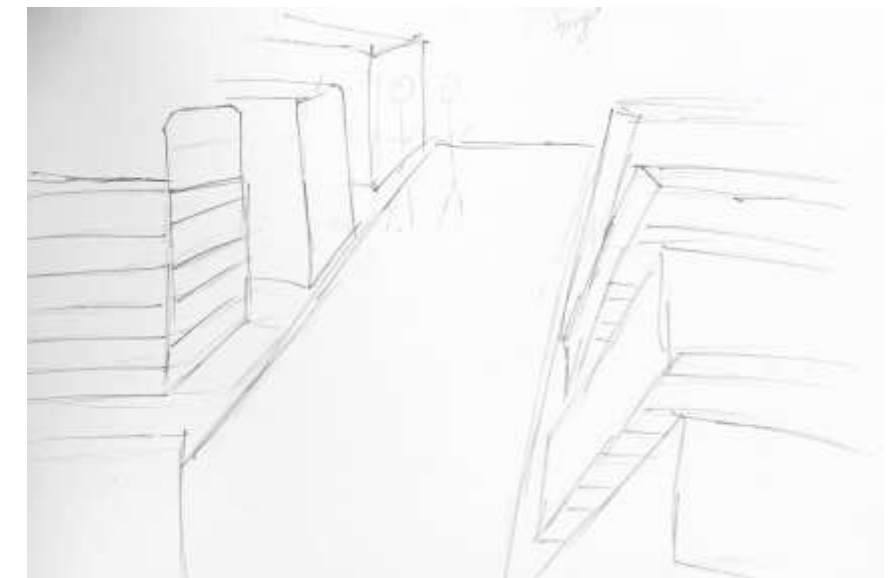
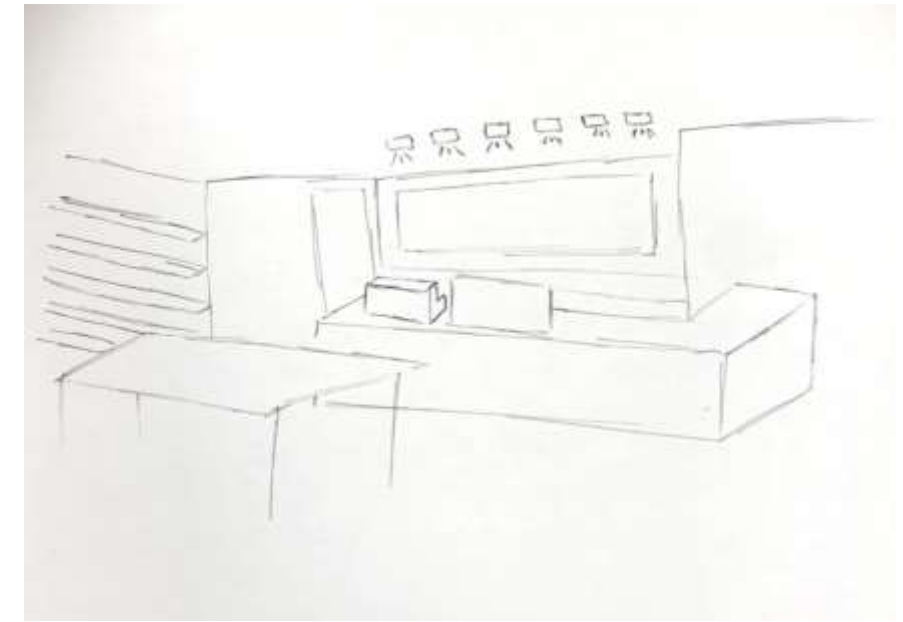
# Assignment 2C



Rebecca Hodges

IDSN 2102 F19

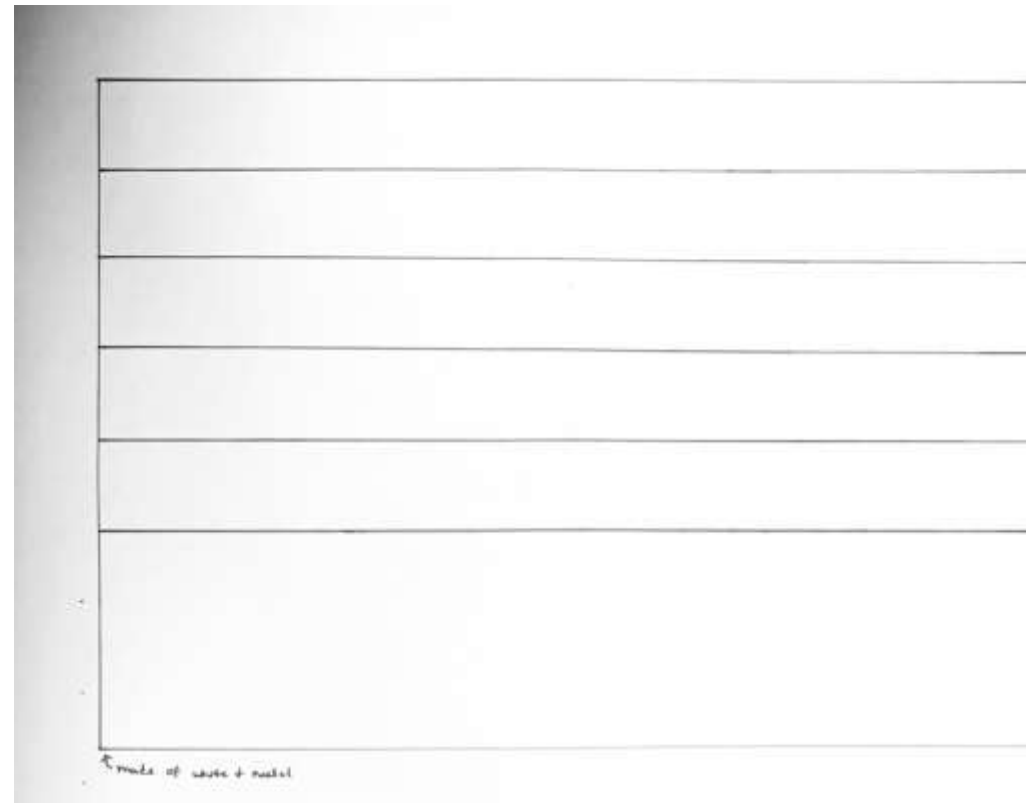
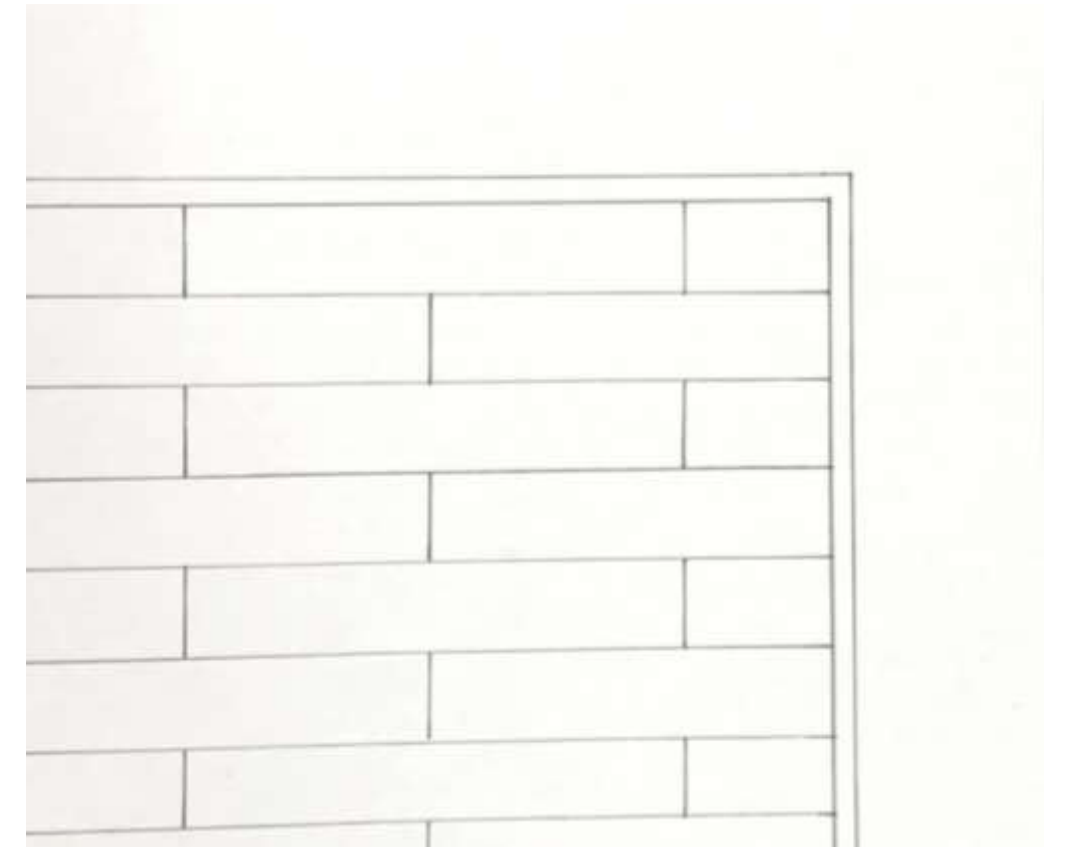
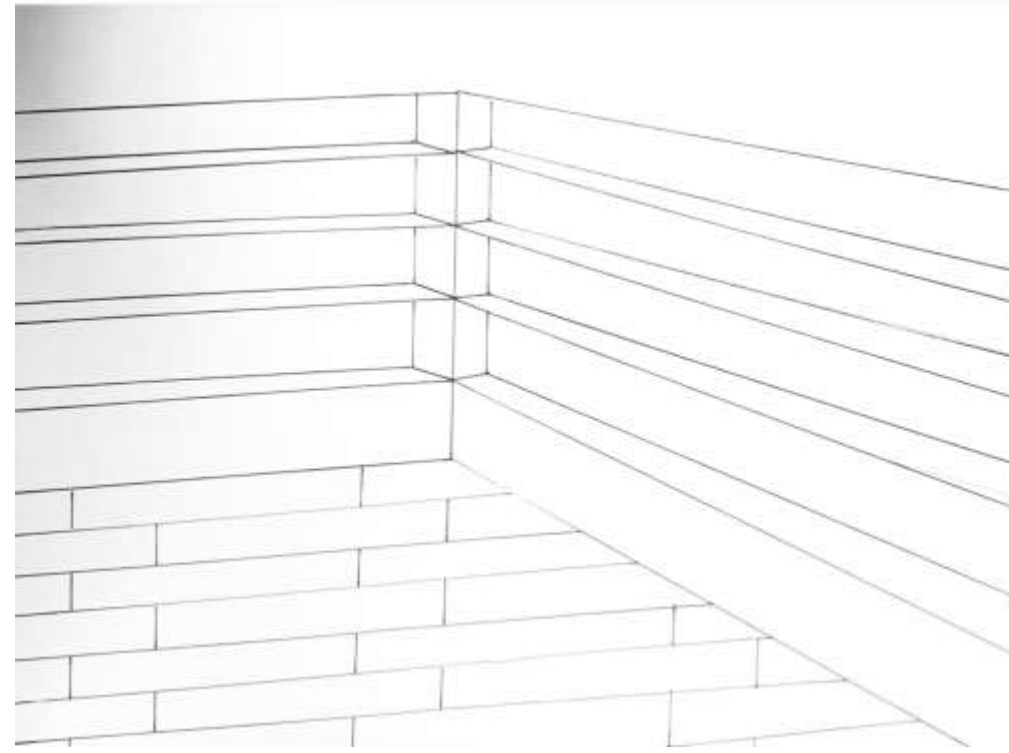
# Assignment 3A



Rebecca Hodges

IDSN 2102 F19

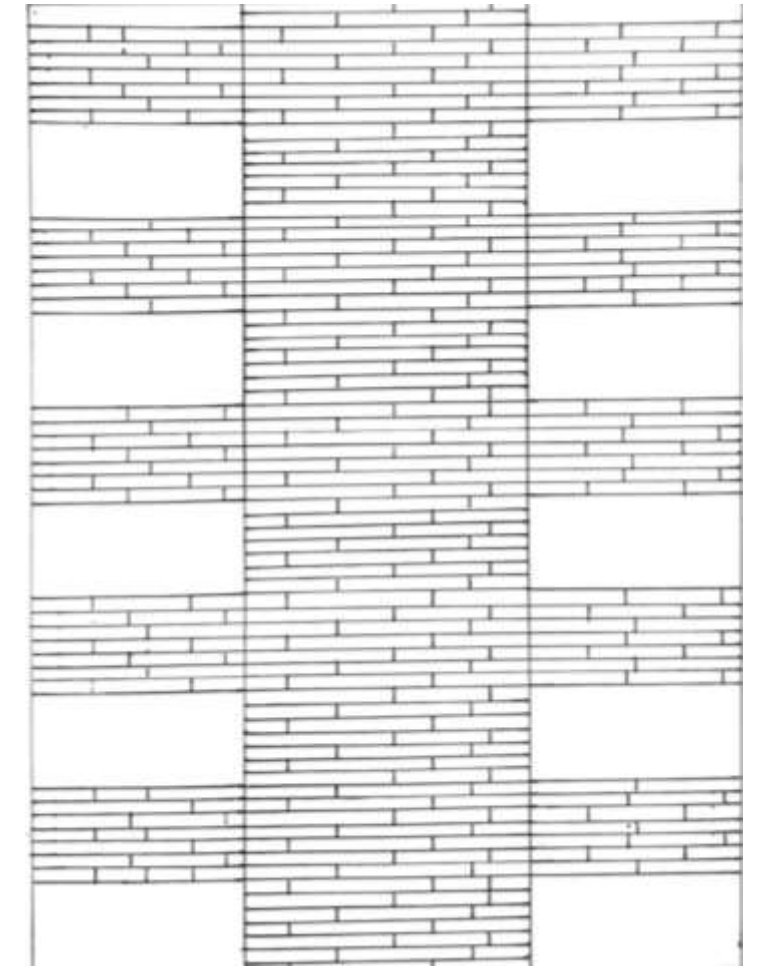
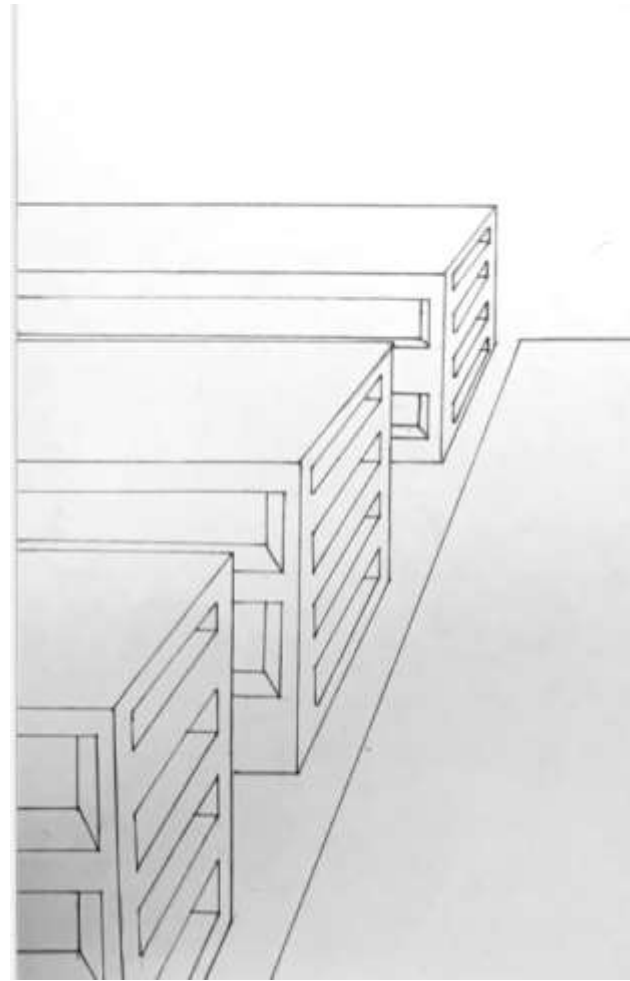
# Assignment 3B



Rebecca Hodges

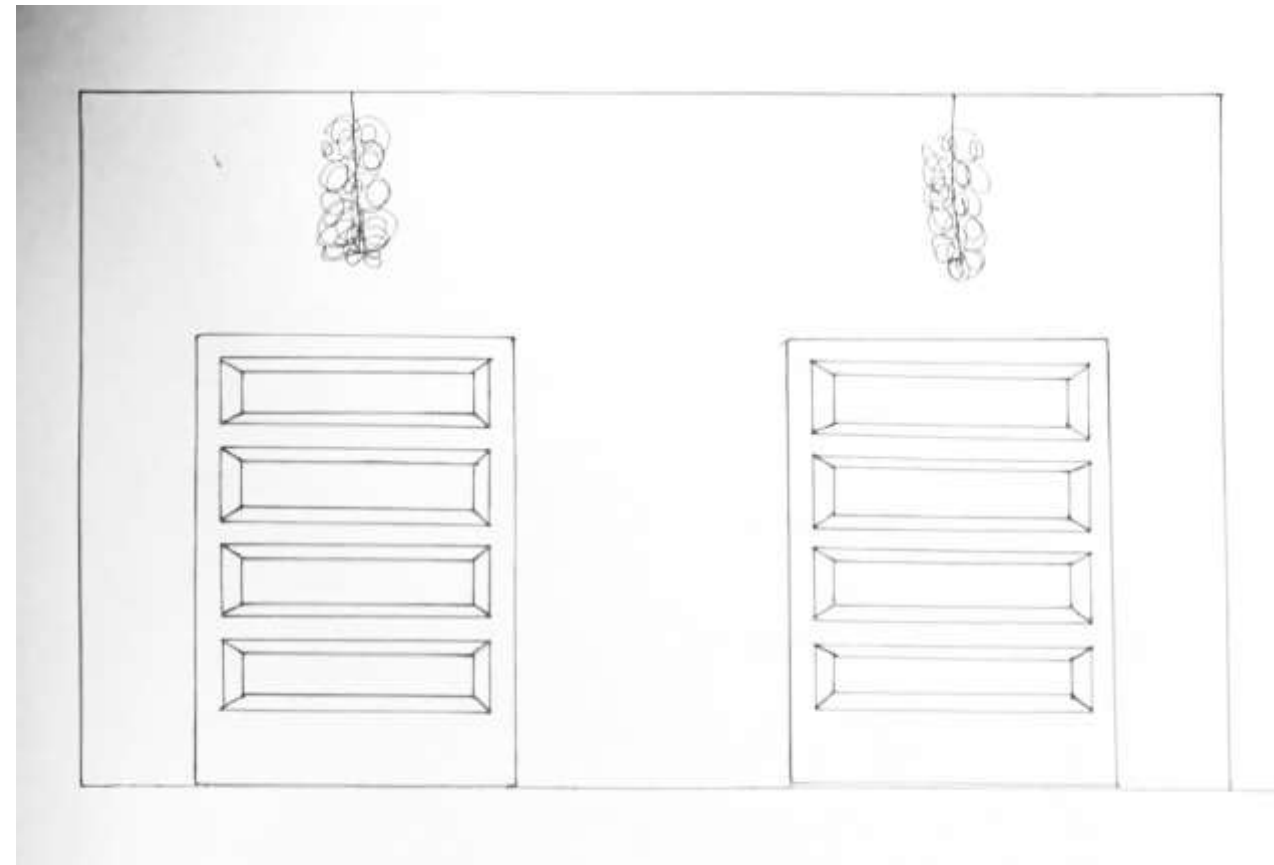
IDSN 2102 F19

# Assignment 3C



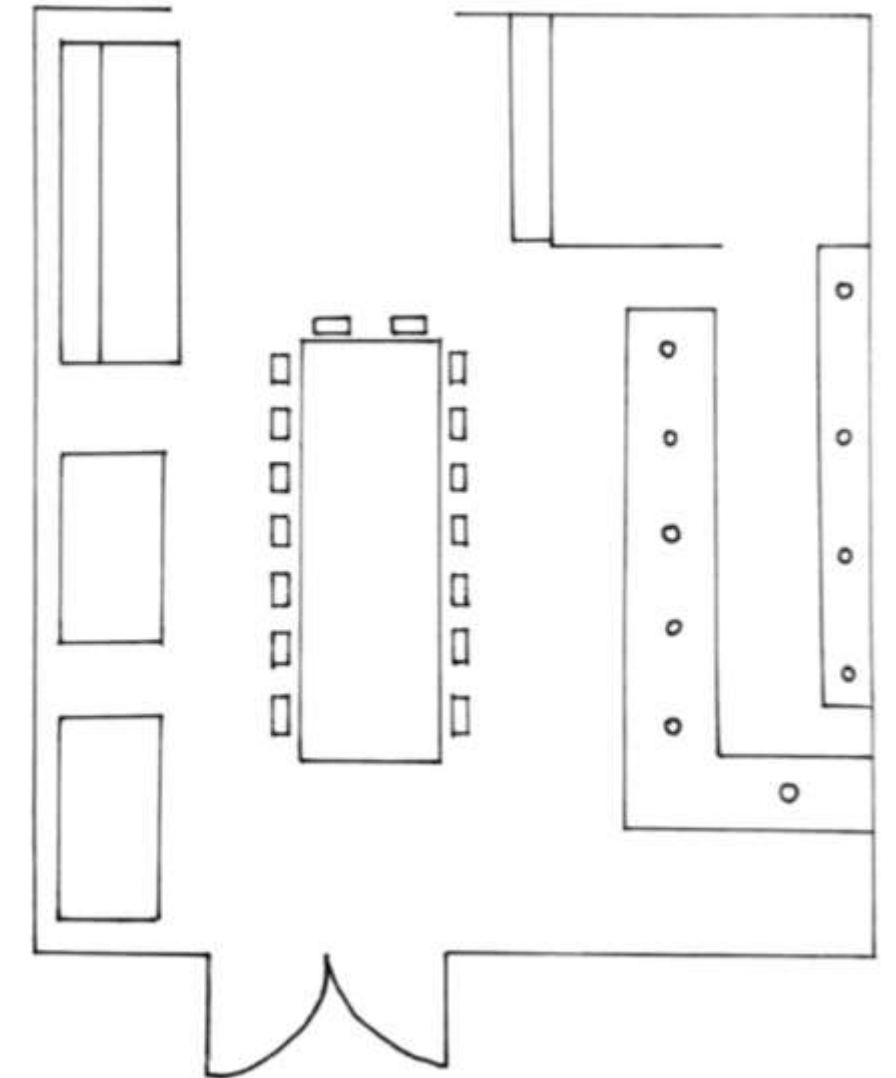
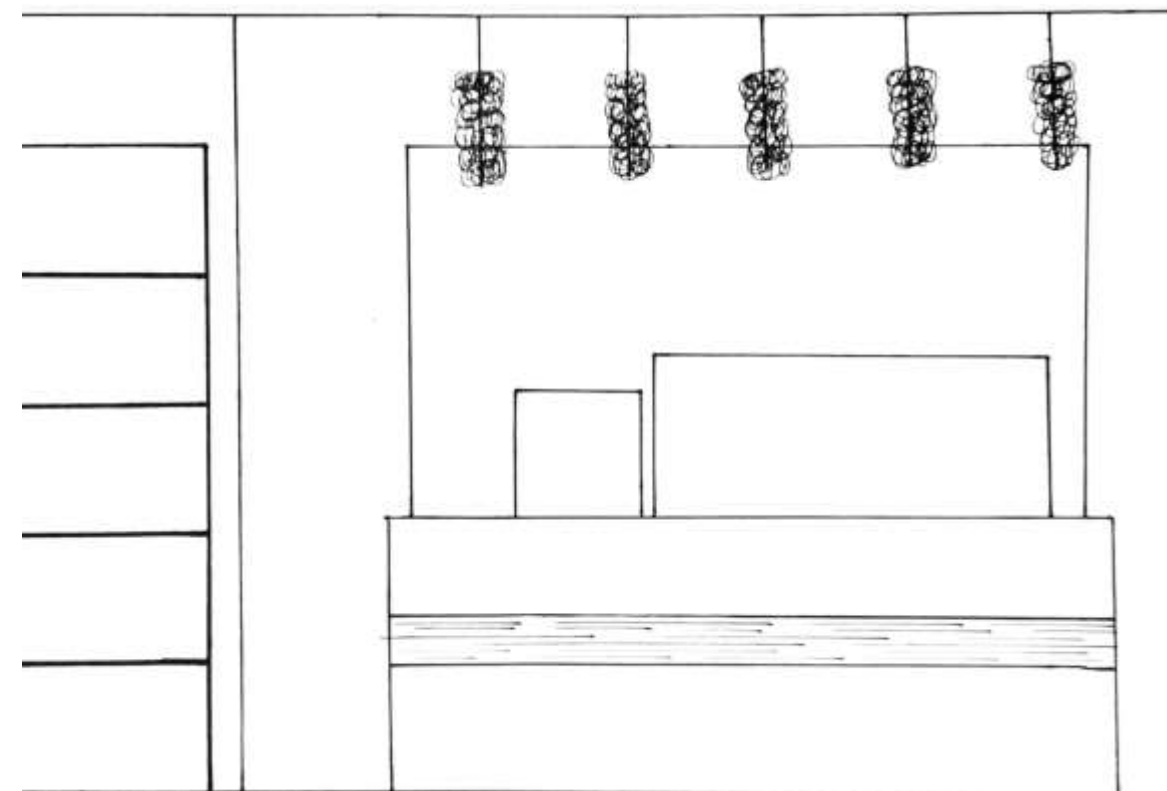
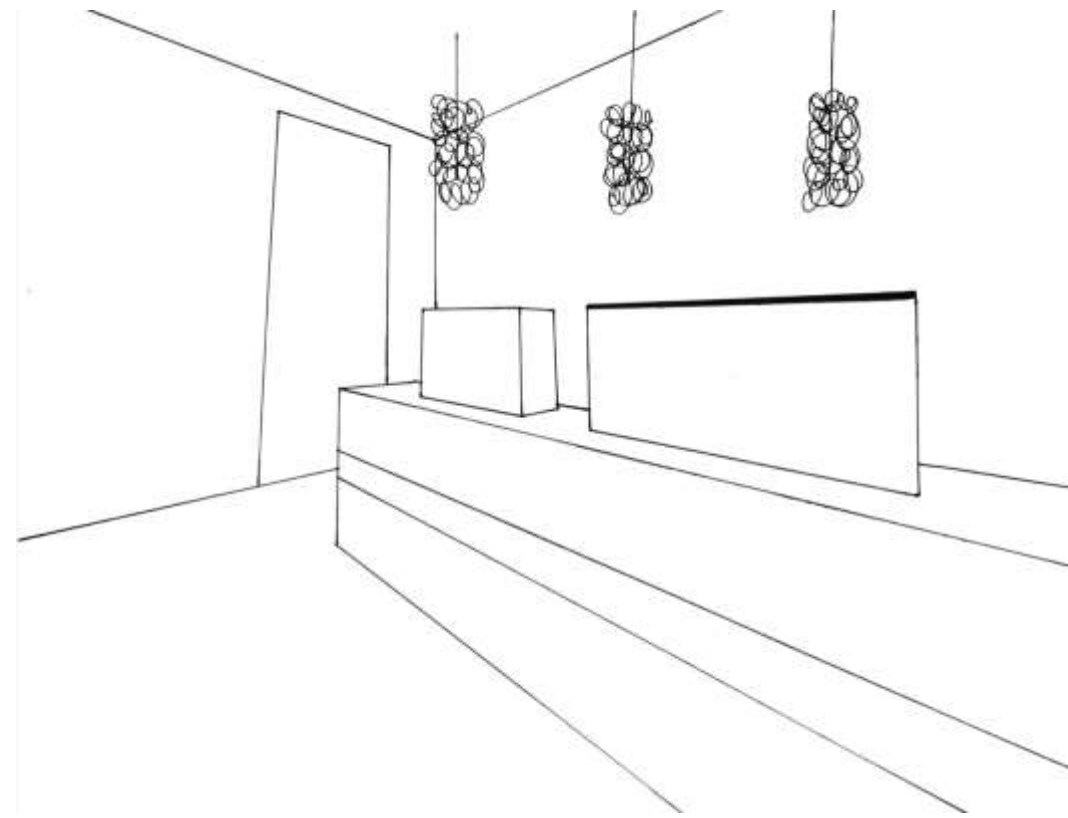
Rebecca Hodges

IDSN 2102 F19





# Assignment 3D

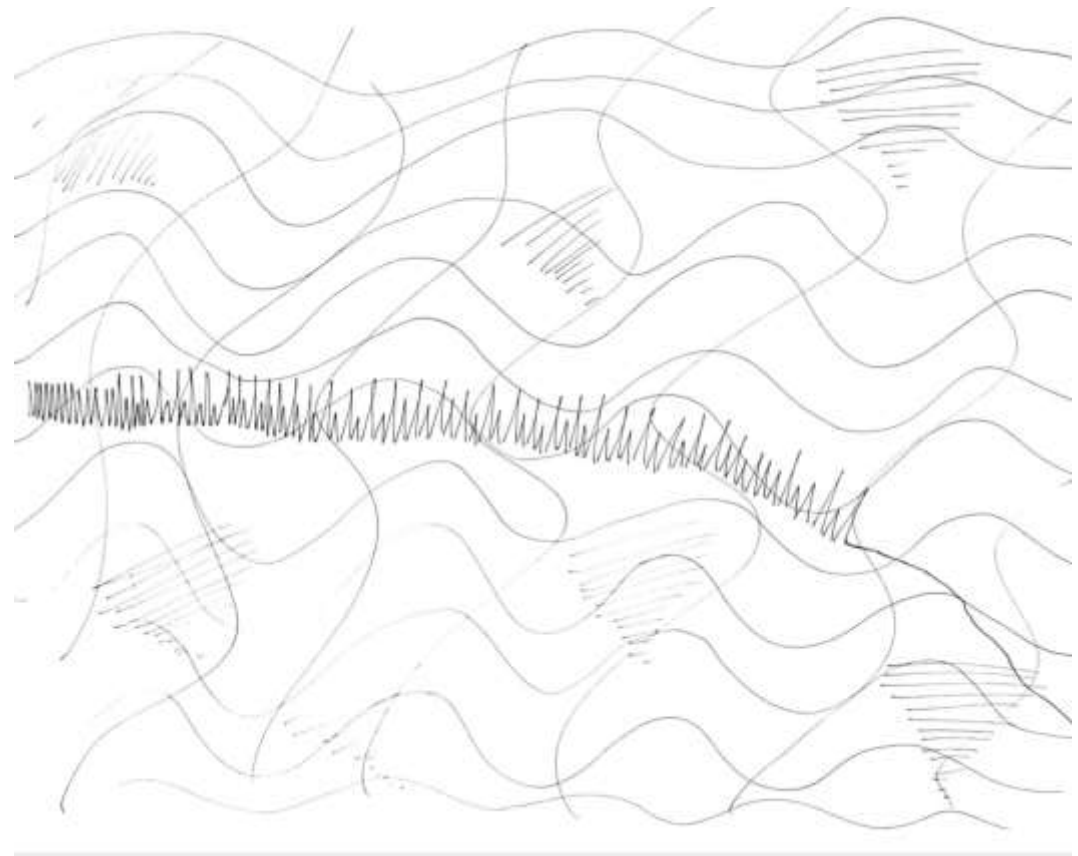
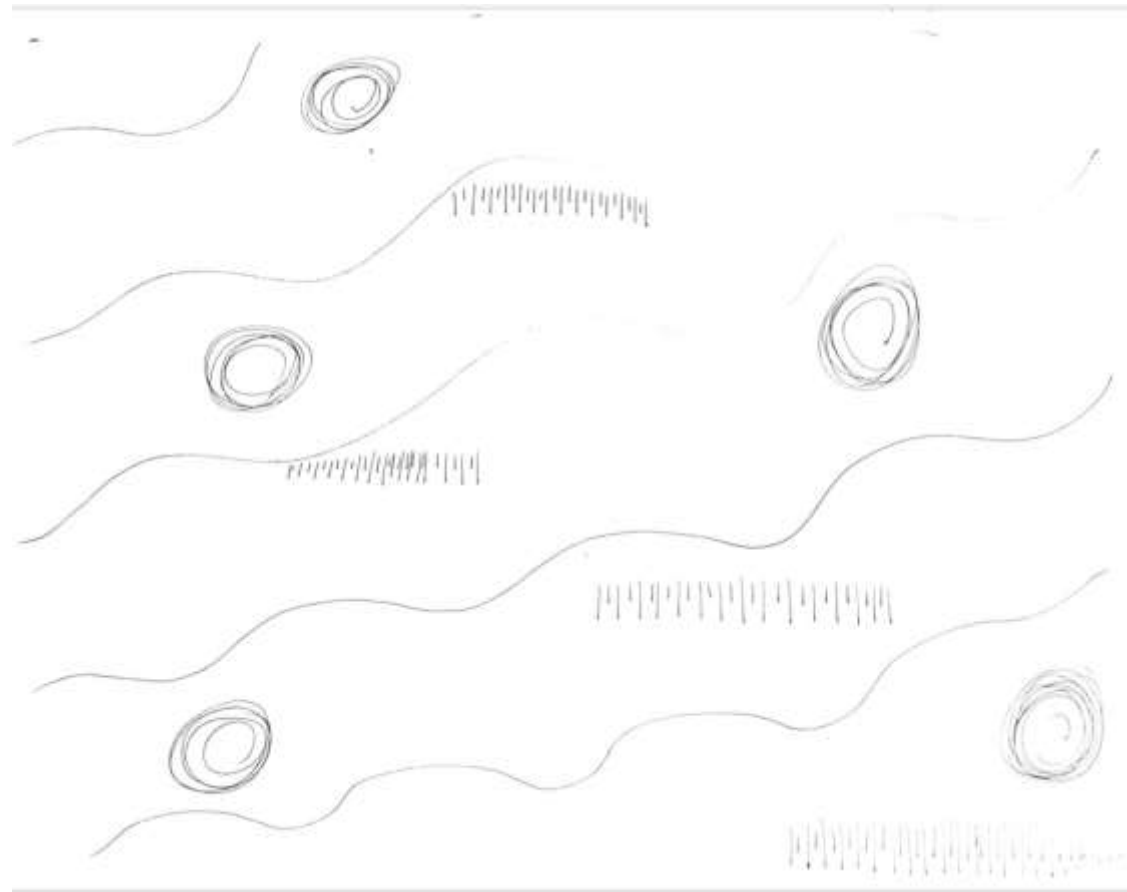


Rebecca Hodges

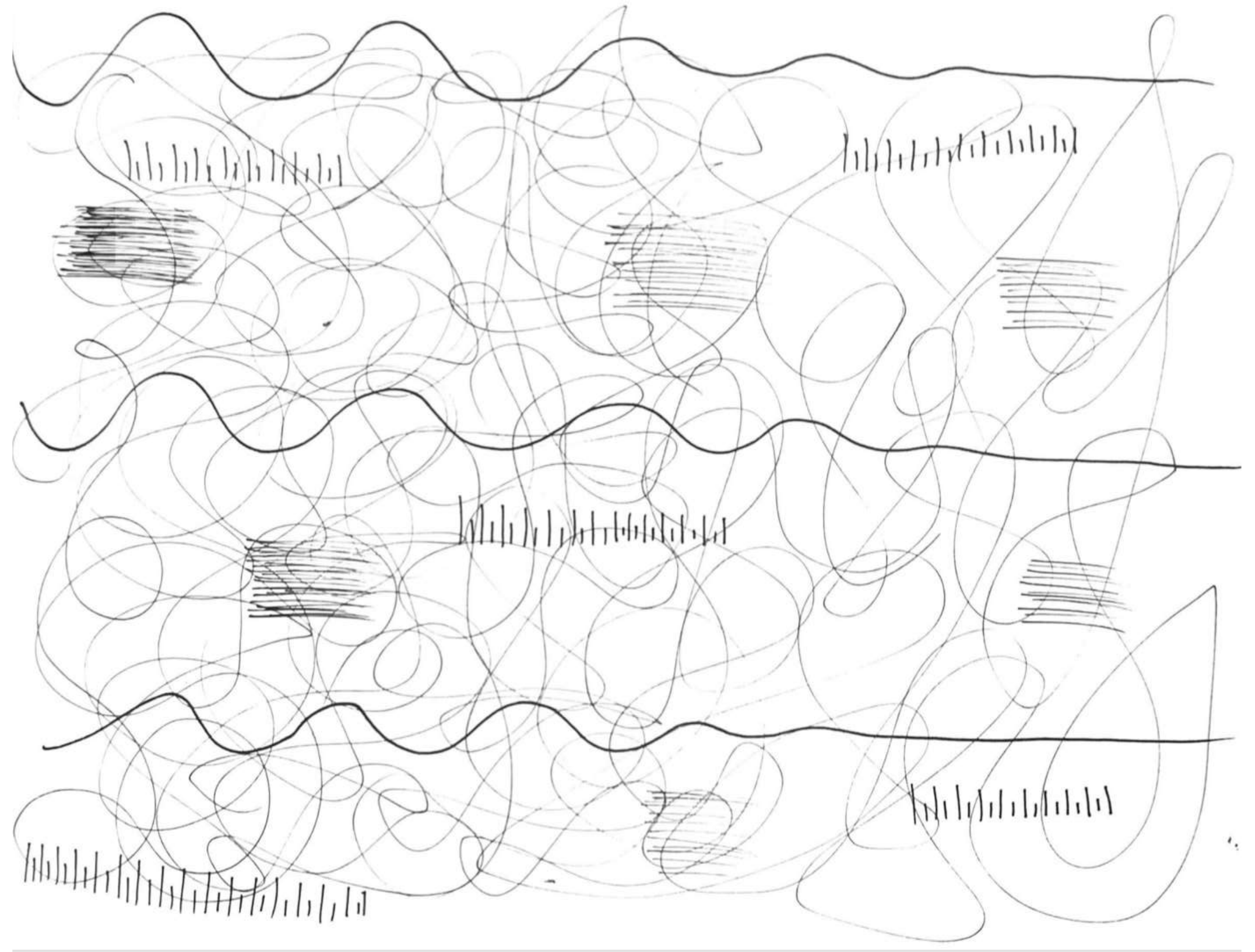
IDSN 2102 F19

Assignment 4A

Rebecca Hodges  
IDSN 2102 F19



# Assignment 4B



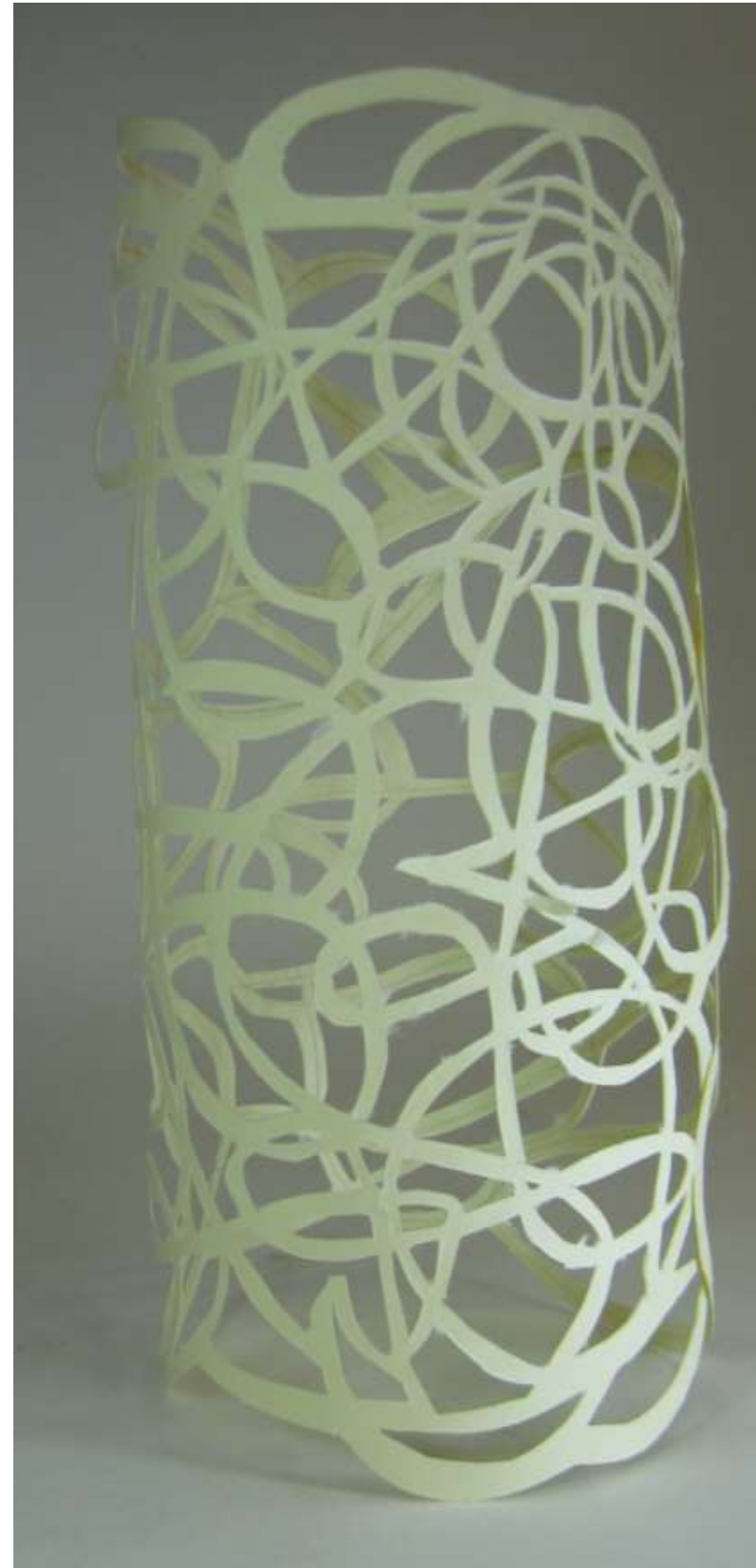
Rebecca Hodges

IDSN 2102 F19

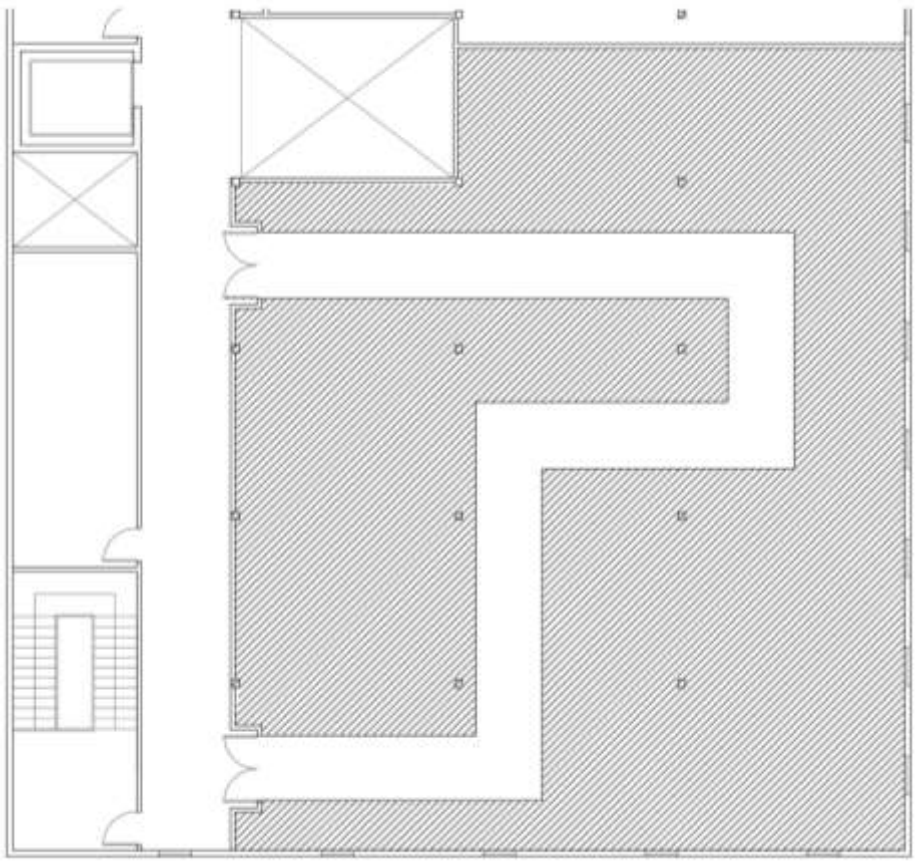
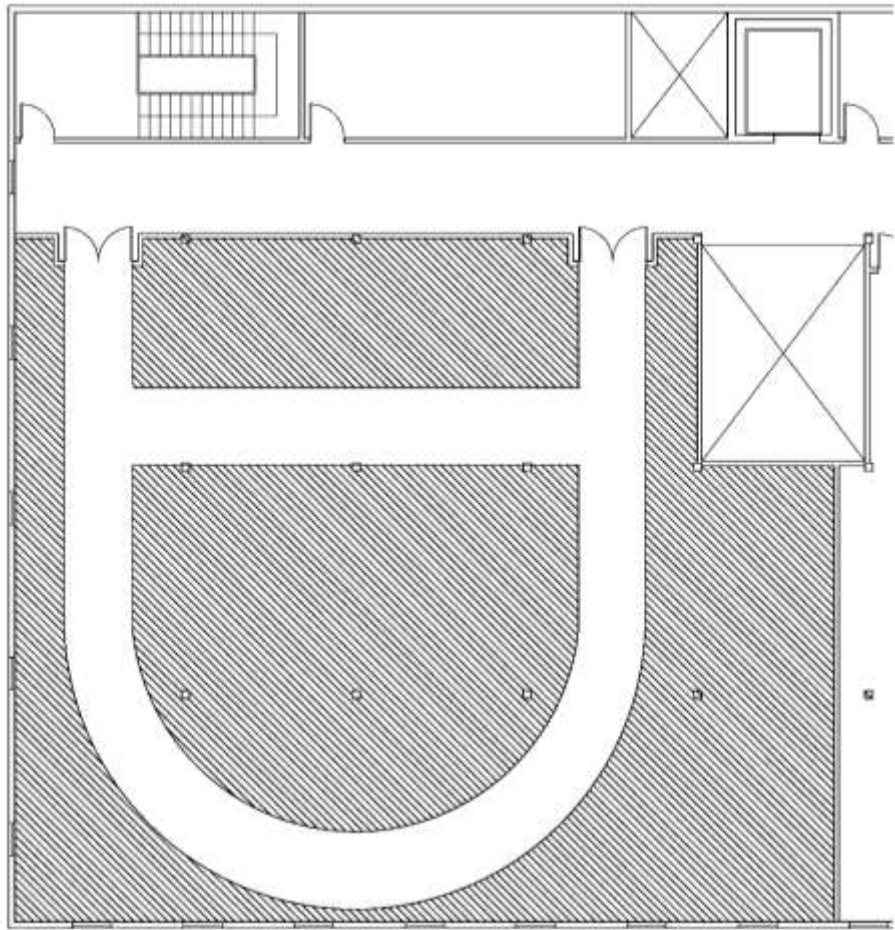
# Assignment 5

**Rebecca Hodges**

**IDSN 2102 F19**



# Assignment 6



**Rebecca Hodges**  
IDSN 2102 F19