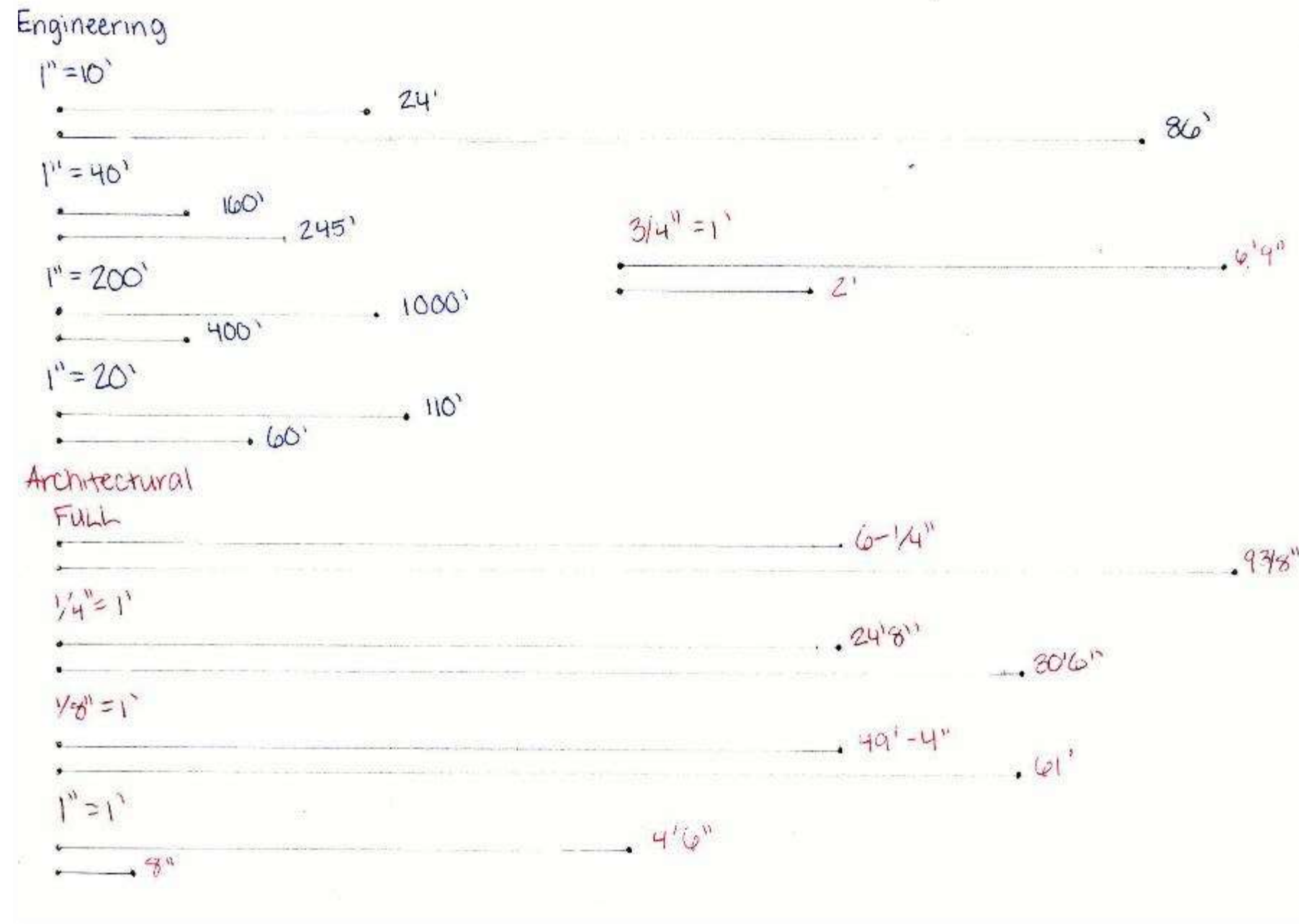


Portfolio 1

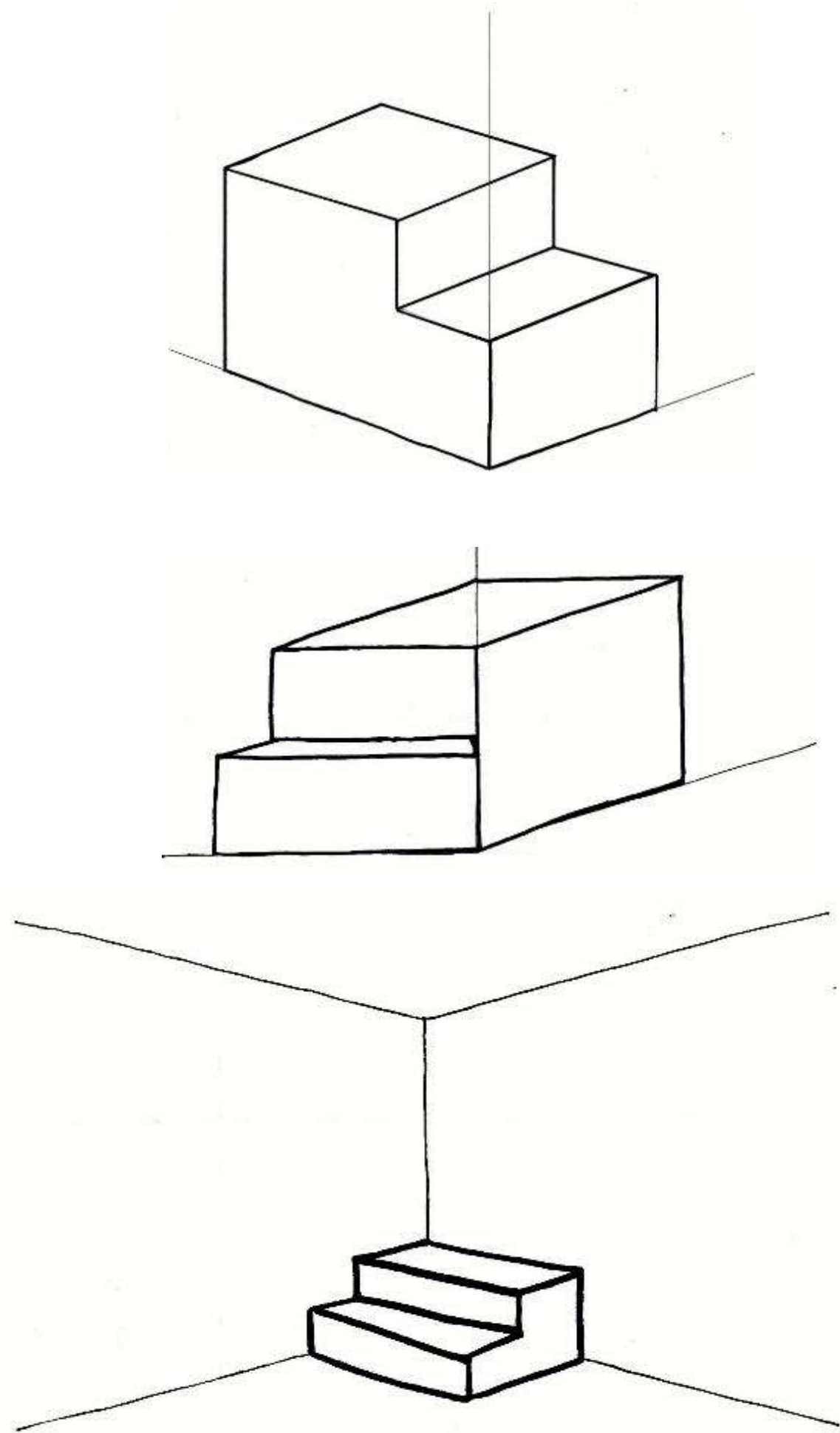
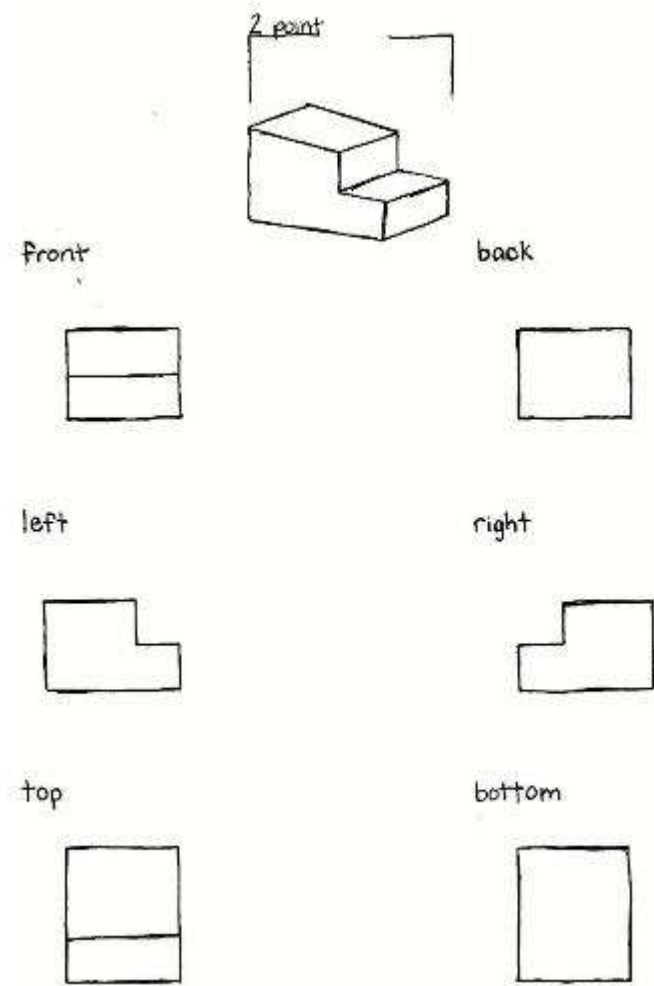
Myah Kendrick

Assignment 1 shows knowledge about the differences between engineering and architectural scales



Assignment 2

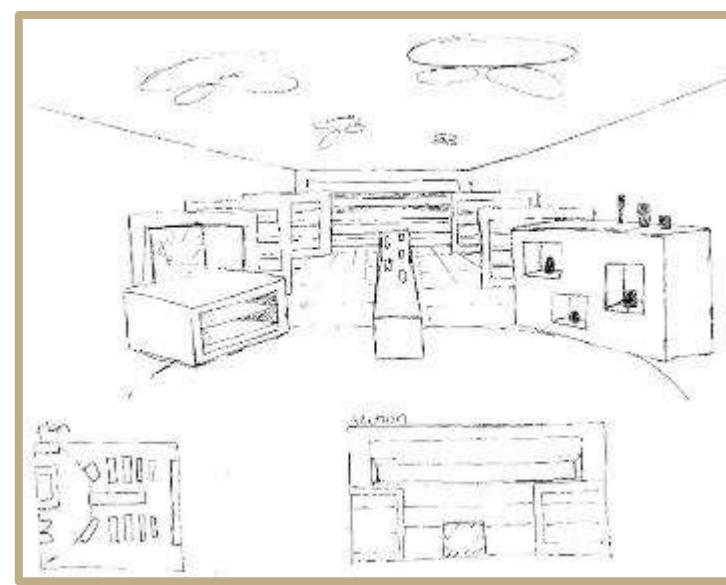
Assignment 2 shows knowledge about the differences of an orthographic drawing, an isometric drawing, an oblique drawing, and a 2 point perspective of a particular object chosen. Orthographic show the 6 true views of an object (front, back, left, right, top, and bottom). Isometric and oblique are very similar except one has two 30 degree angles (top right) and the other has a 30 degree angle with a zero degree angle (middle right). The bottom right solely just shows the stairs in a room of a 2 point perspective.



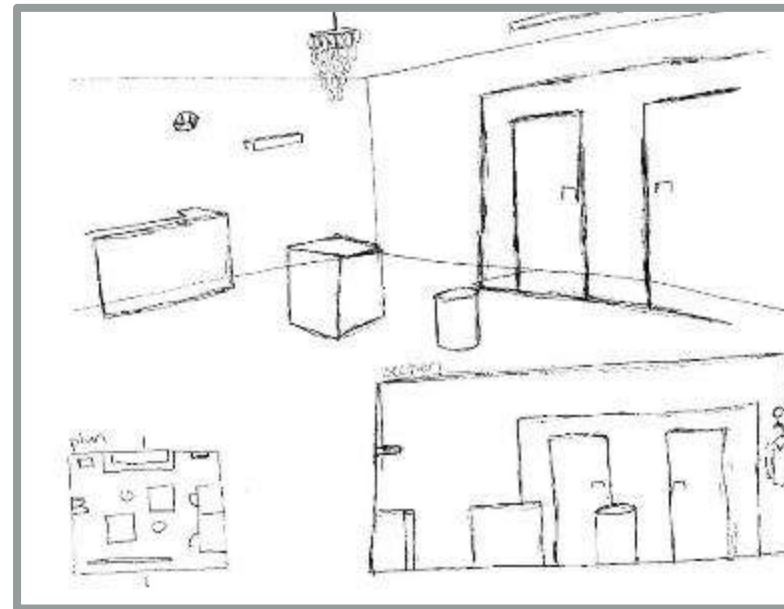
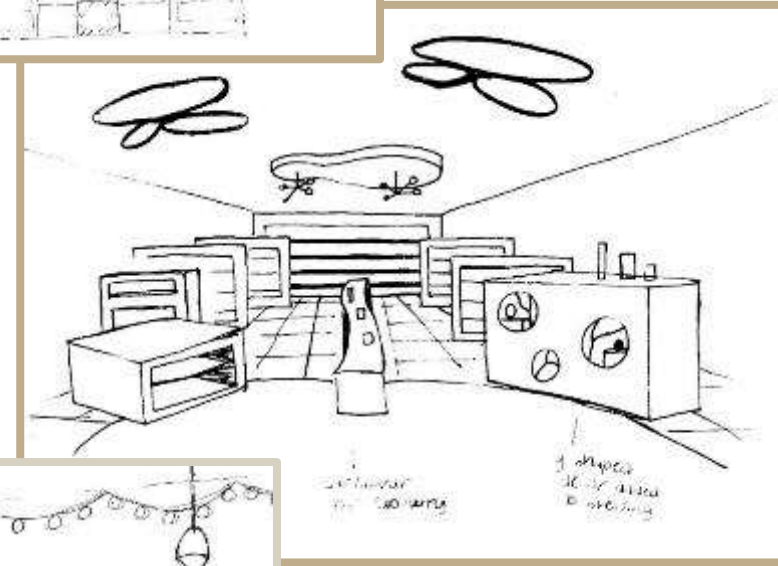
Myah Kendrick
IDSN2102 F19

Assignment 3

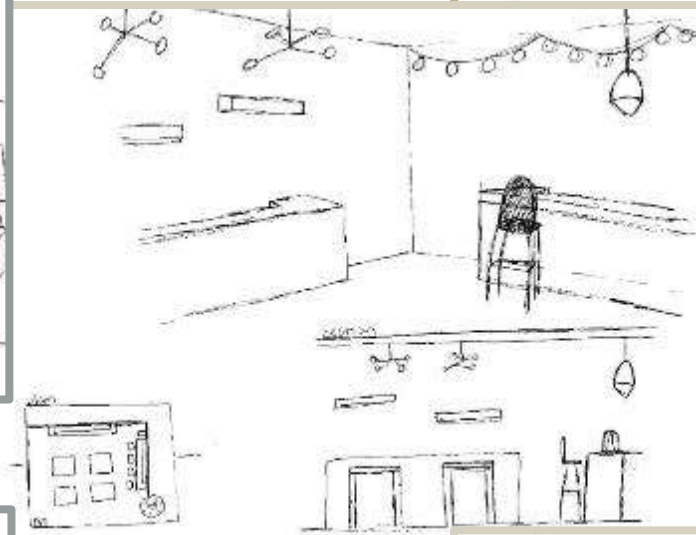
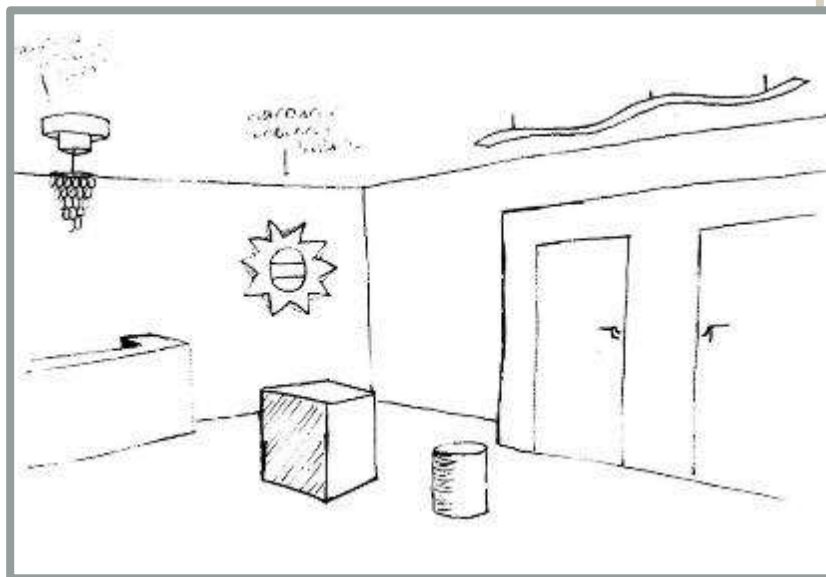
Assignment 3 was a concept and a way to understand space. The ability to sketch spaces that were comfortable and then transform them in a unique and personalized way, also including future assignments, 4 and 5.



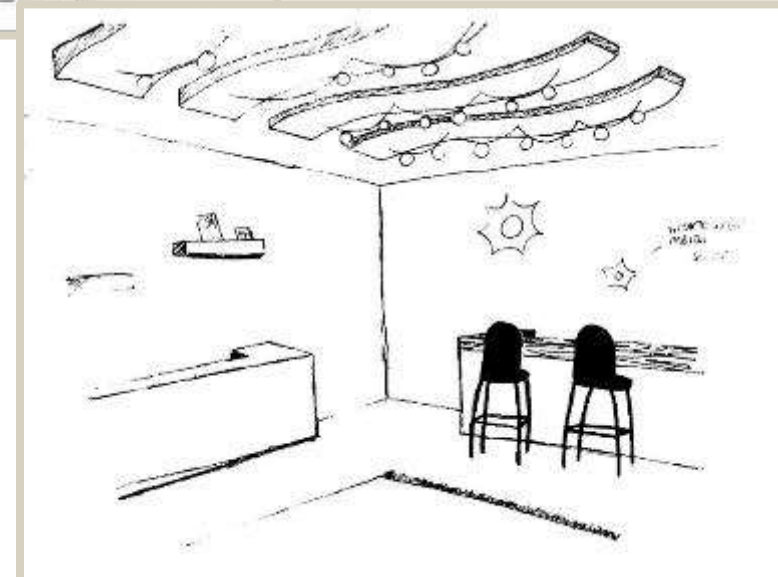
Shopping with Friends Sketches



Shopping Alone Sketches



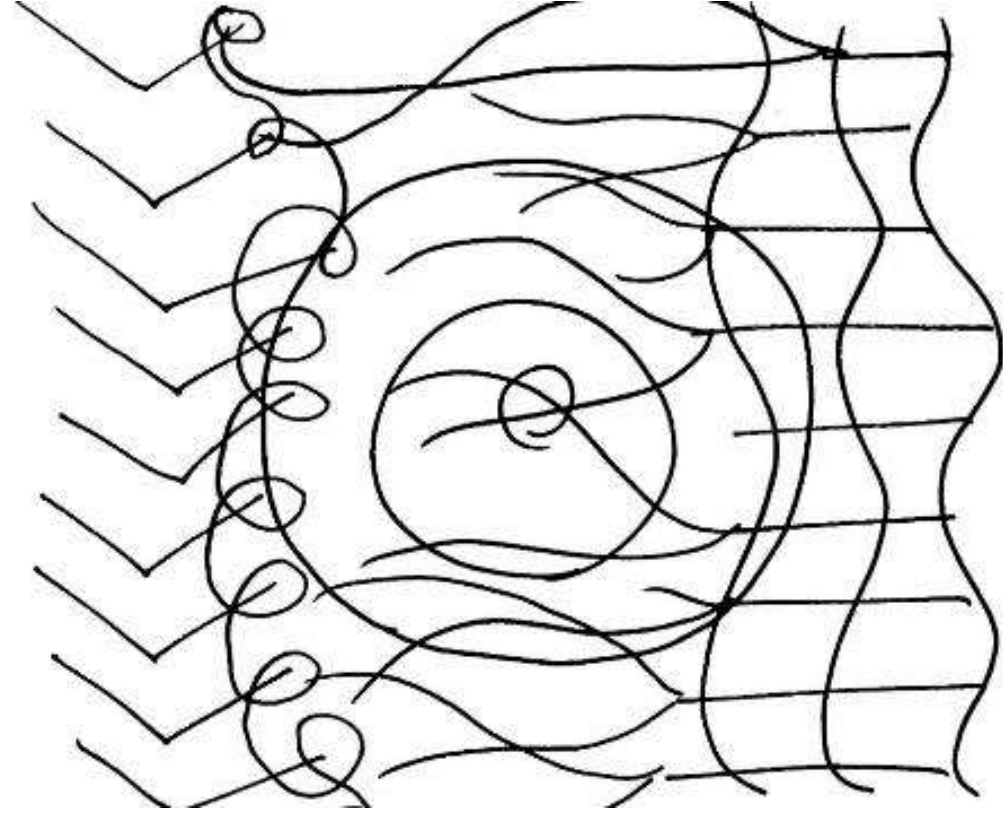
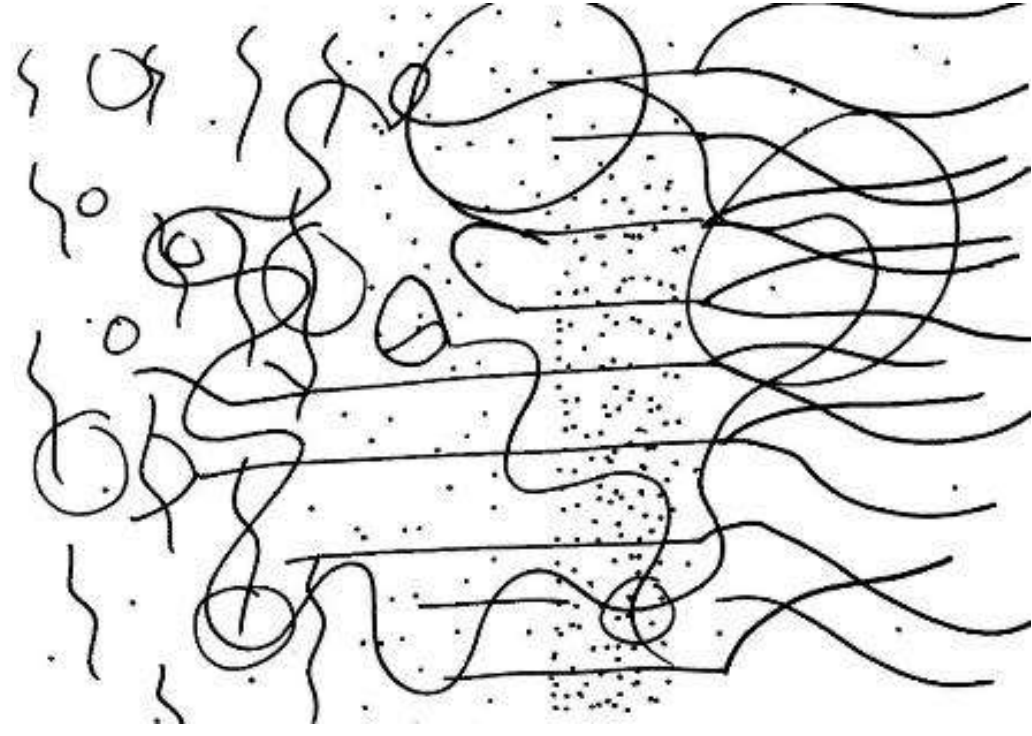
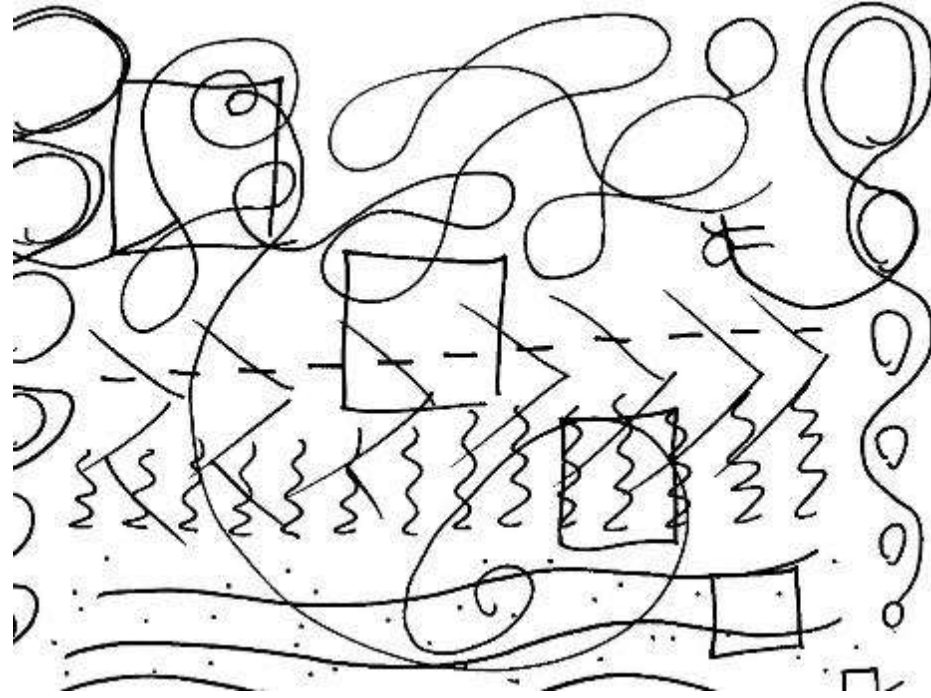
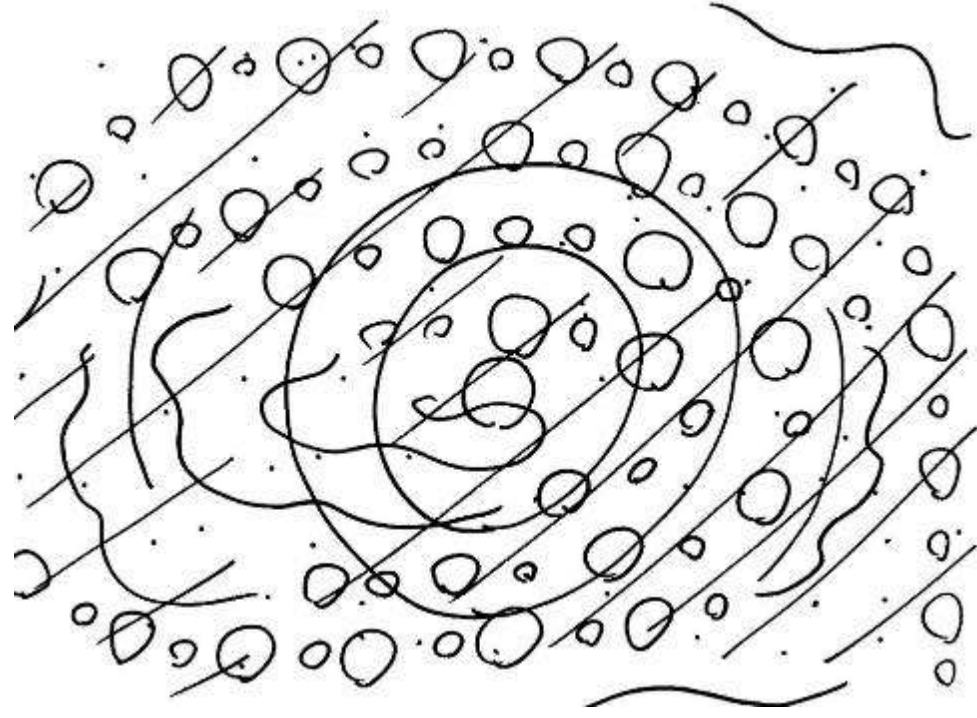
Shopping while Eating Sketches



Myah Kendrick
IDSN2102 F19

Assignment 4

Assignment 4 was a prelude to assignment 5, after listening to a song, these pictures were made as an abstract piece to capture the essence of the music. These drawings helped spark outside-the-box thinking.



Myah Kendrick

IDSN2102 F19

Assignment 5

Assignment 5 was simply taking assignment 4 and turning it into a 3-D form This model is what was used to help create a newer space in assignment 3.

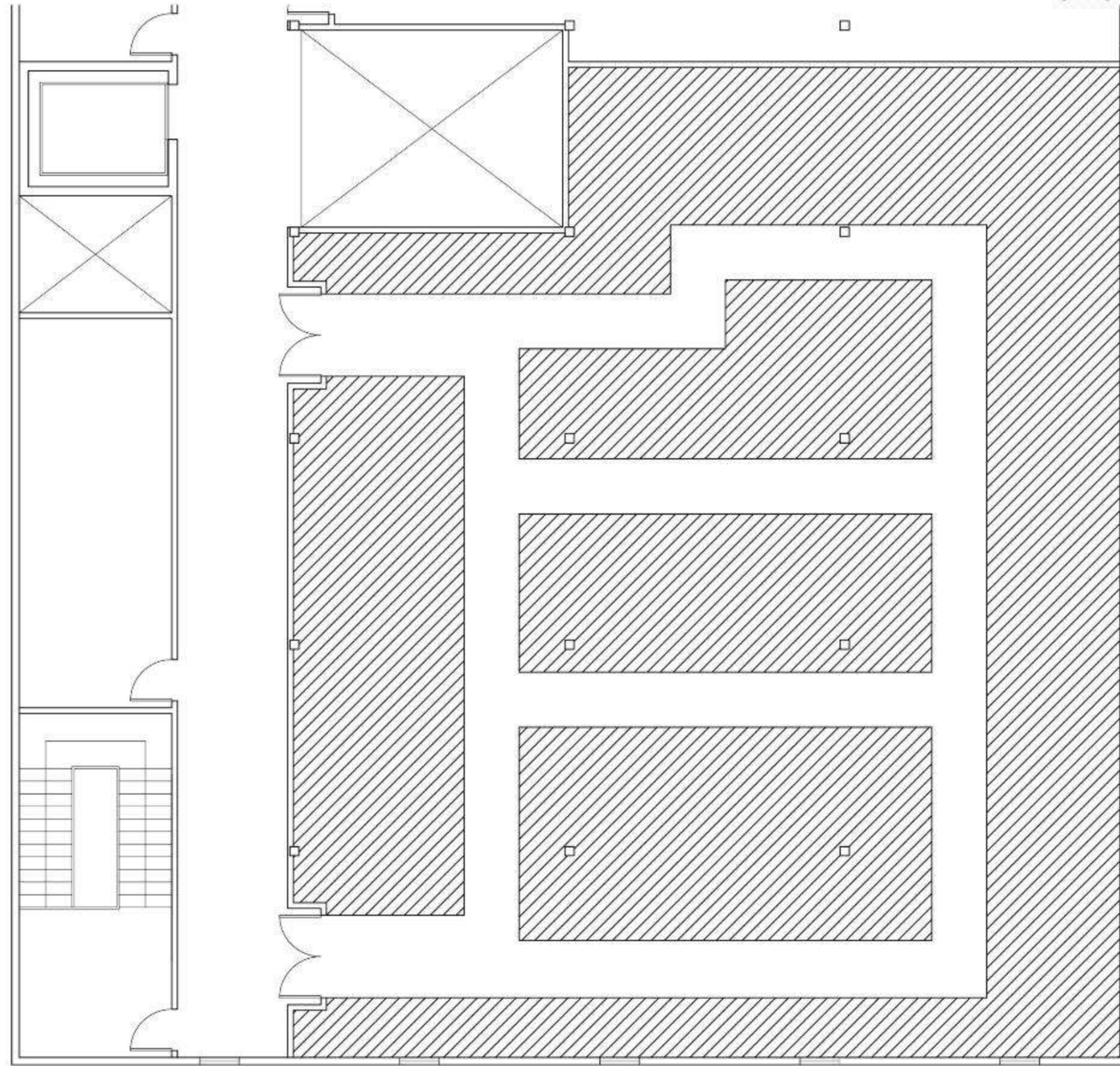


Myah Kendrick

IDSN2102 F19

Assignment 6

Assignment 6 is a circulation plan created to help create form to give the space of Hughes Tobacco Warehouse.



Myah Kendrick
IDSN2102 F19