

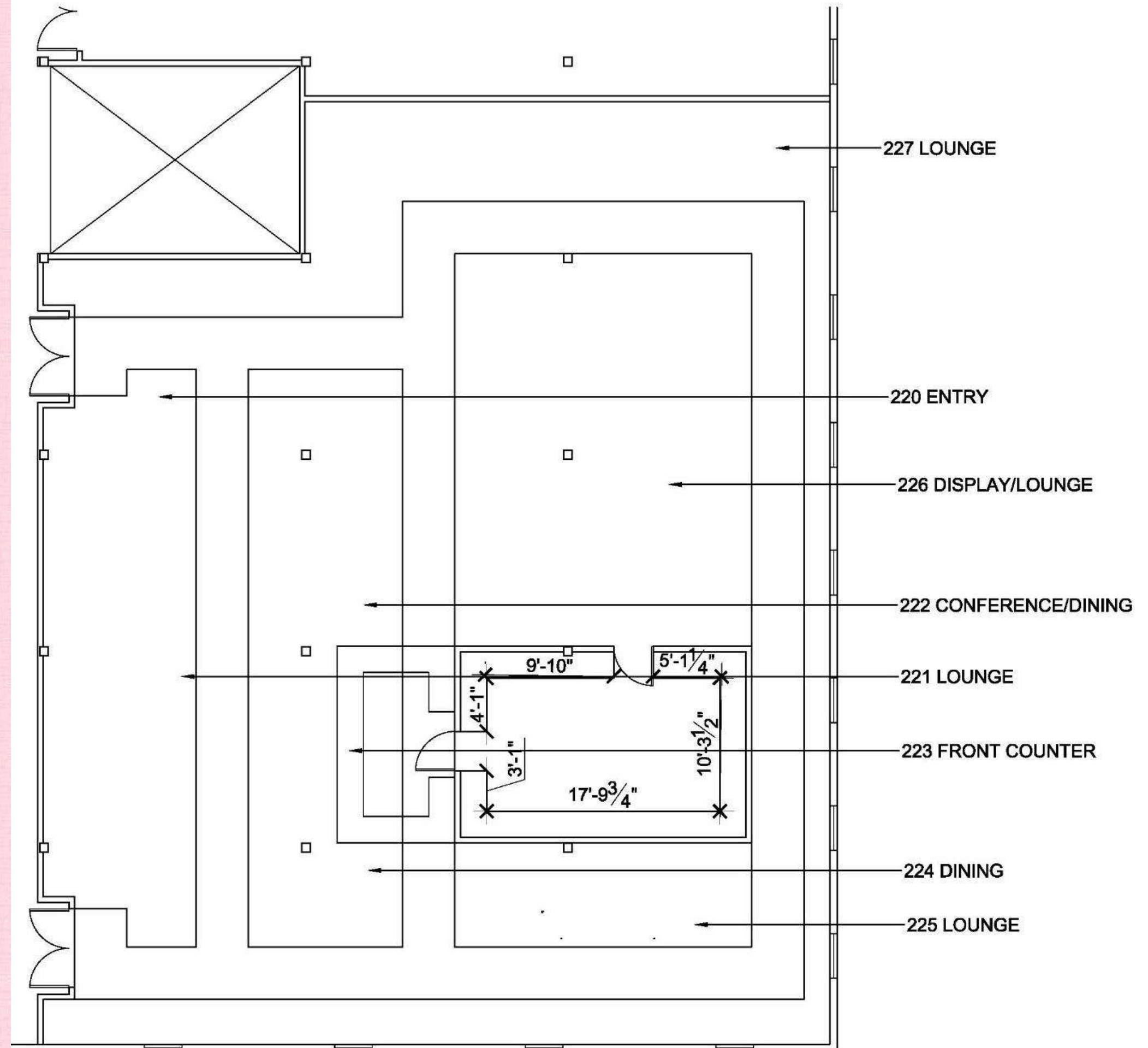
*IDSN 2101 F19:
Portfolio Two
Elizabeth
Mcleod*

Assignment 7: A prep space/kitchen area was created in AutoCAD for the Hughes Tobacco Warehouse in Greenville, NC. The warehouse will be turned into a retail or display area so the kitchen/prep space will be used to make the food or refreshments that will be served to customers passing through.

Assignment 8: In AutoCAD a service counter was created for customers to retrieve their refreshments from the kitchen/prep area

Elizabeth McLeod

IDSN 2102 F19

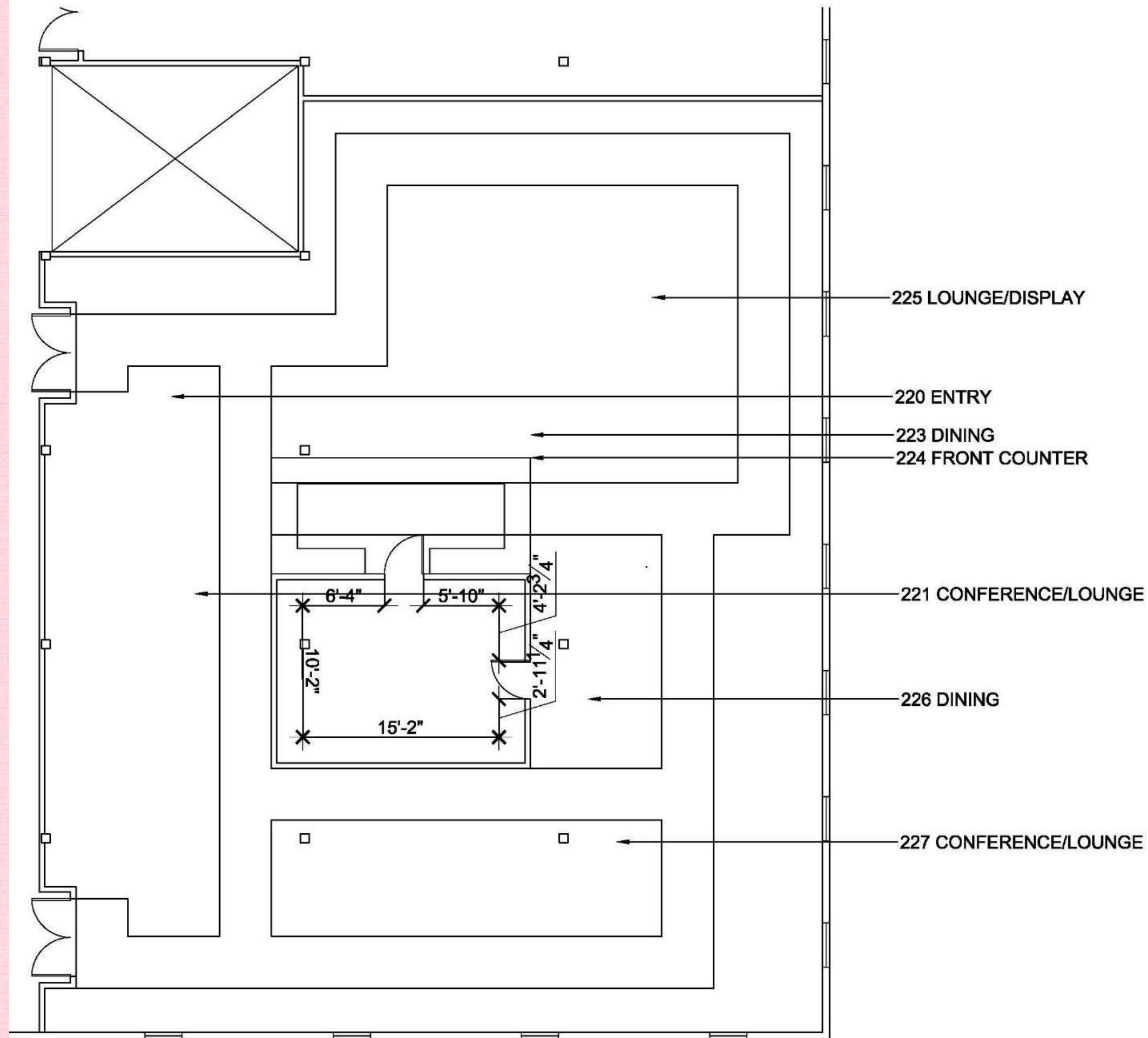


Assignment 7: A second prep space/kitchen area was created in AutoCAD for the Hughes Tobacco Warehouse in Greenville, NC. The warehouse will be turned into a retail or display area.

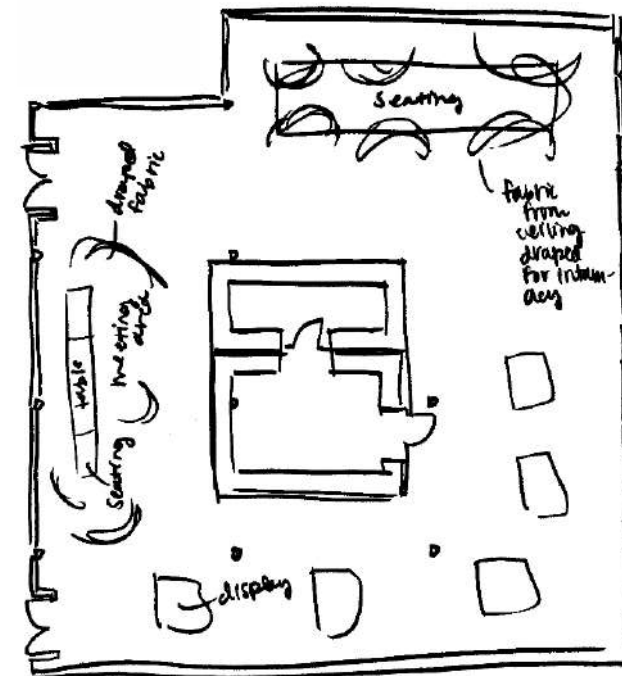
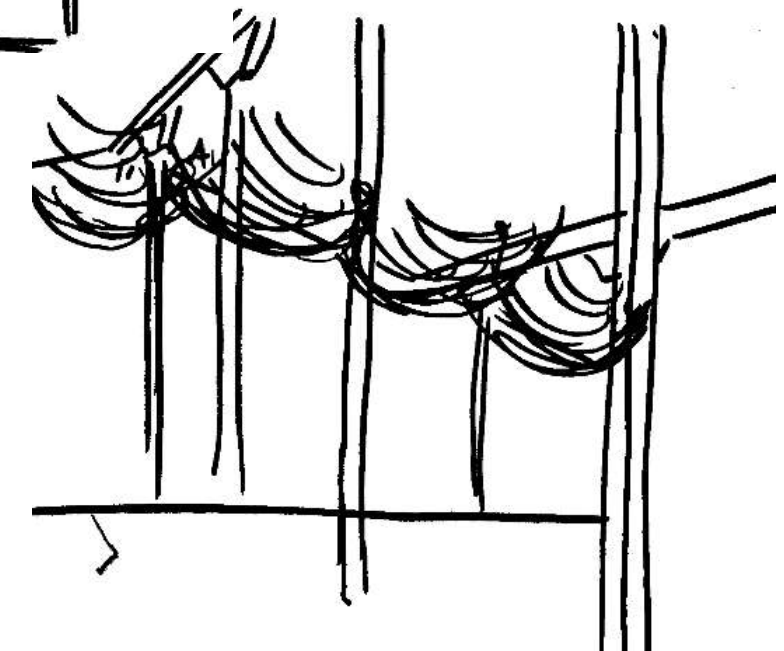
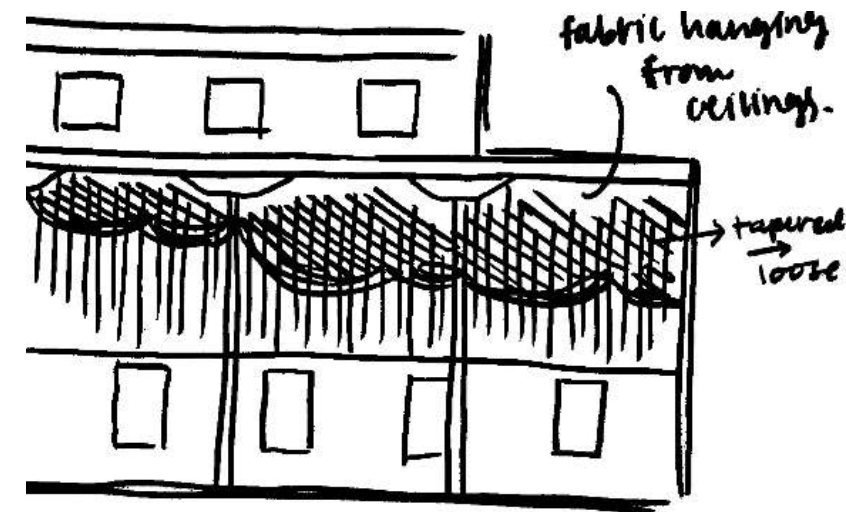
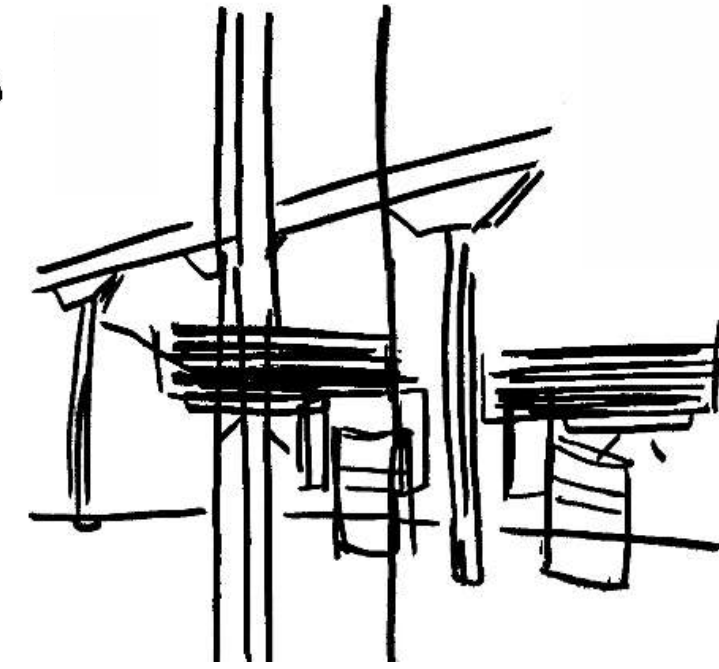
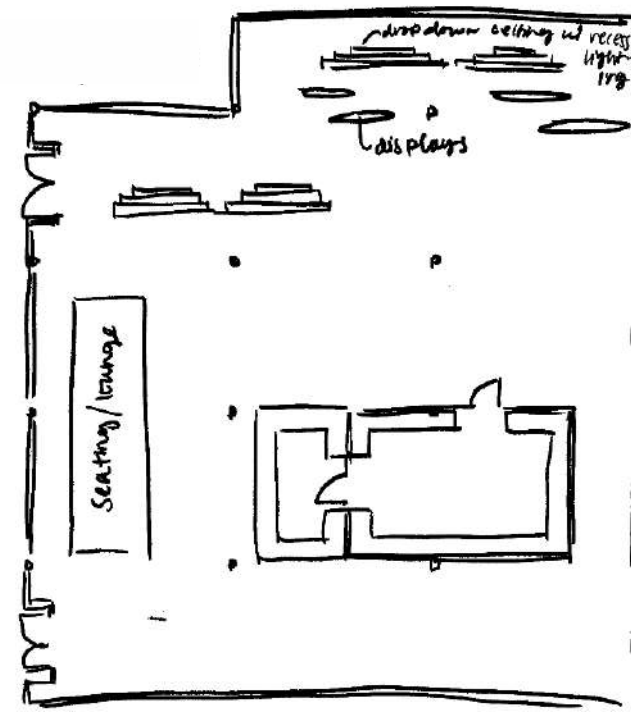
Assignment 8: In AutoCAD a second service counter was created for customers to retrieve their refreshments from the kitchen/prep area

Elizabeth McLeod

IDSN 2102 F19

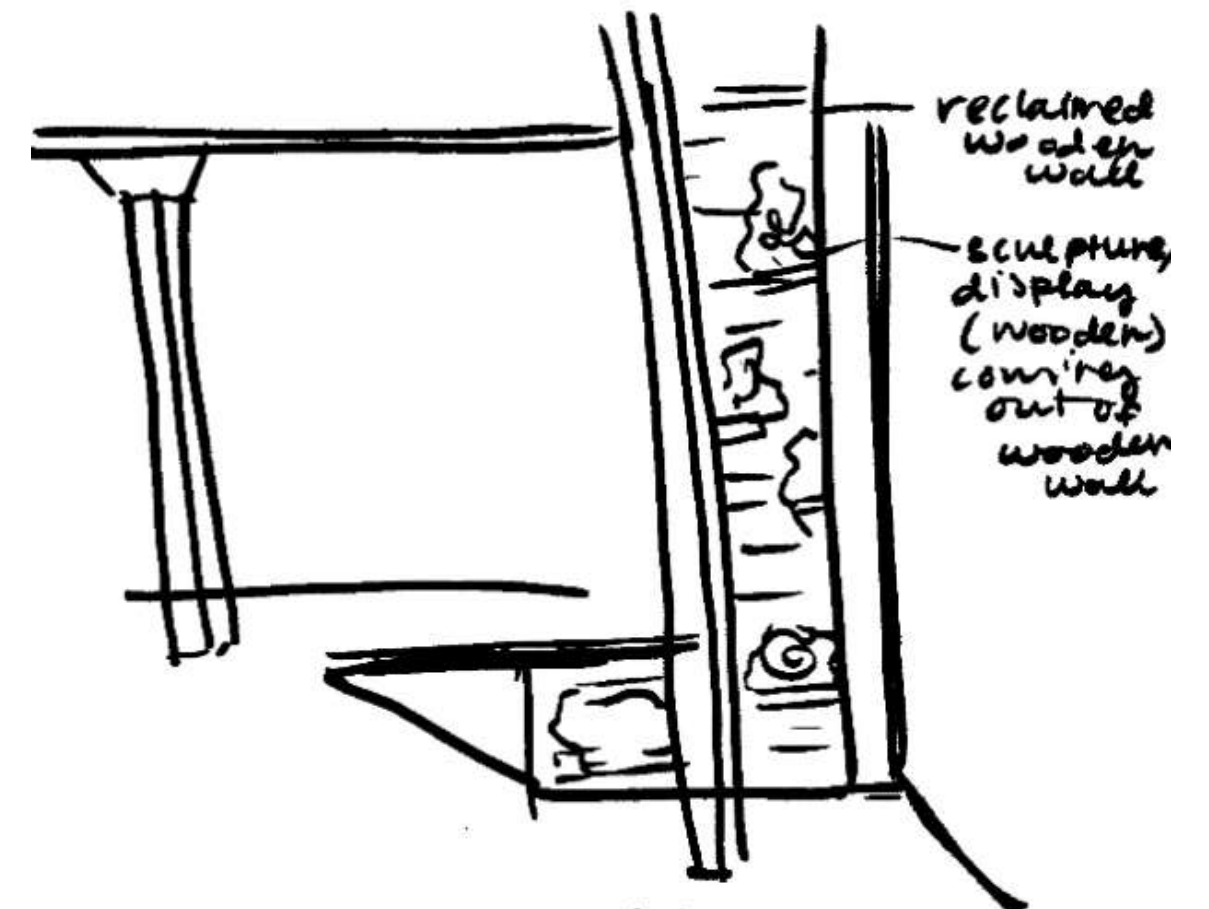
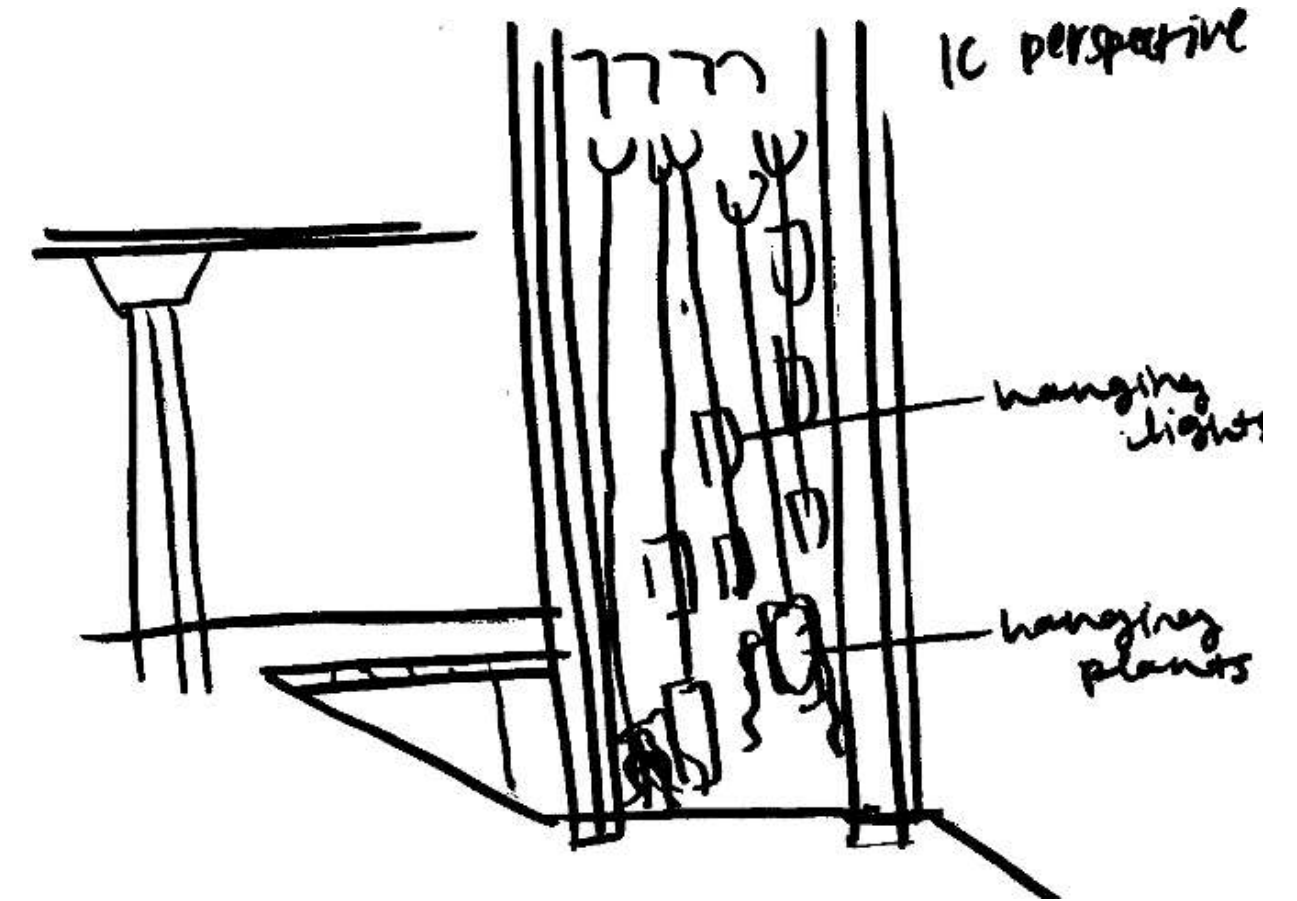
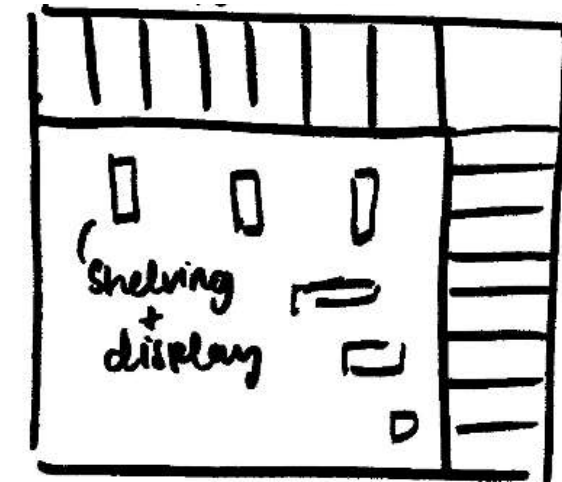
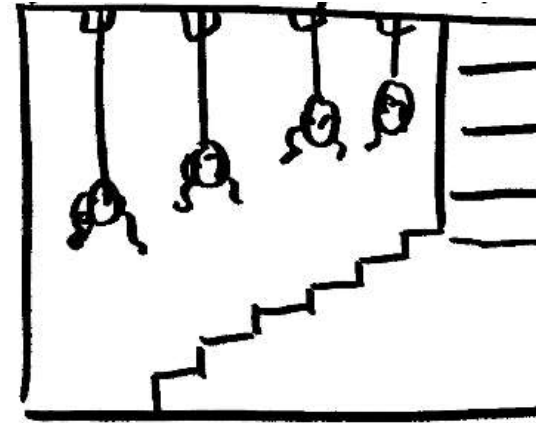
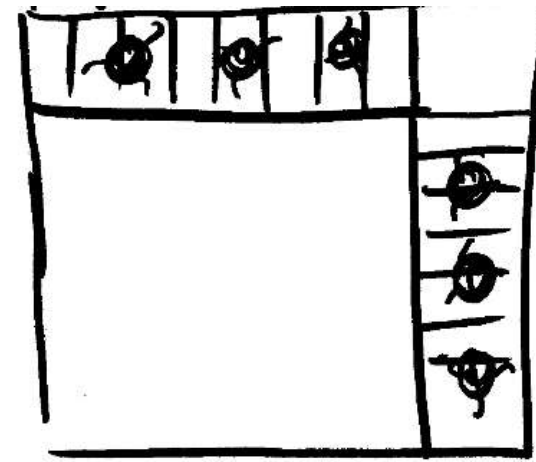


Assignment 9: A variety of problems were proposed in relation to the design of the retail space that will be put inside the Hughes Tobacco Warehouse. The issue of wayfinding, locating stair cases, ceilings/lighting, as well as the overall design and size of the back of house were to be considered. The top row to the right are the plan, section, and perspective drawings of the first solution to the wayfinding issue. The middle/bottom row are the plan, section, and perspective drawings for the second solution to the wayfinding issue.



Elizabeth McLeod
IDSN 2102 F19

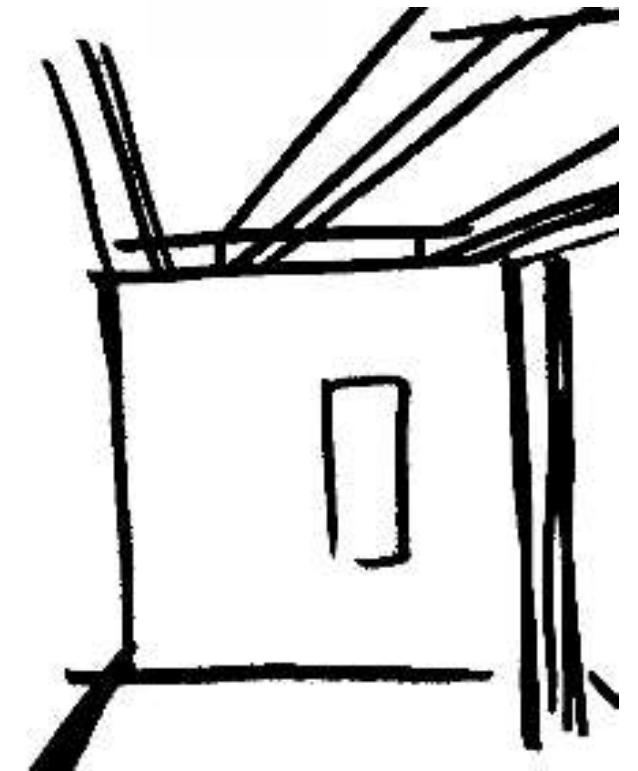
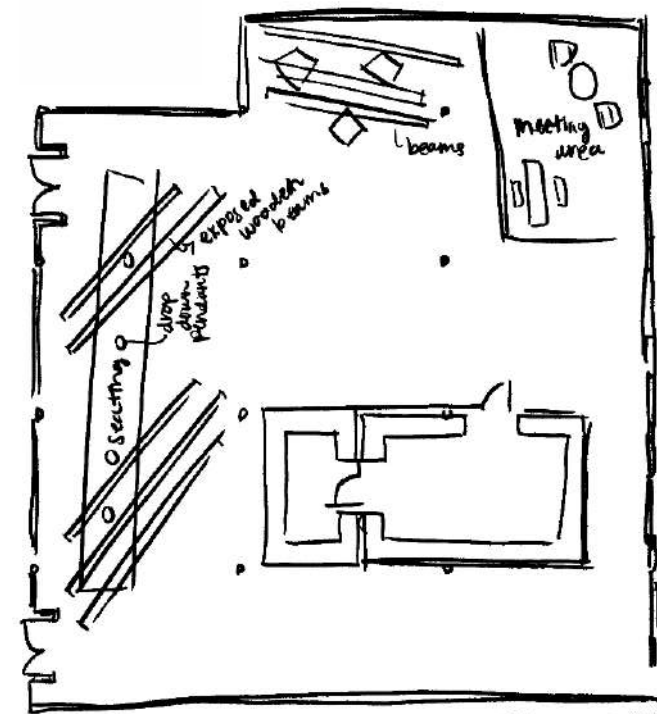
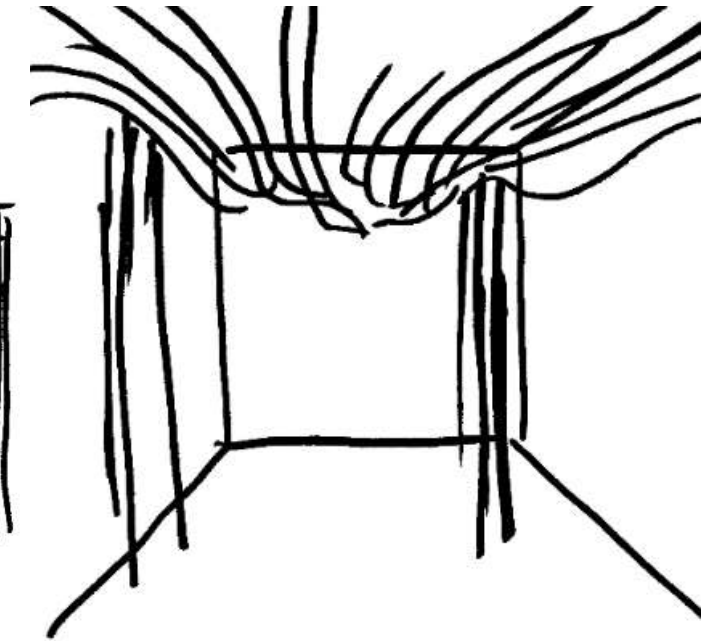
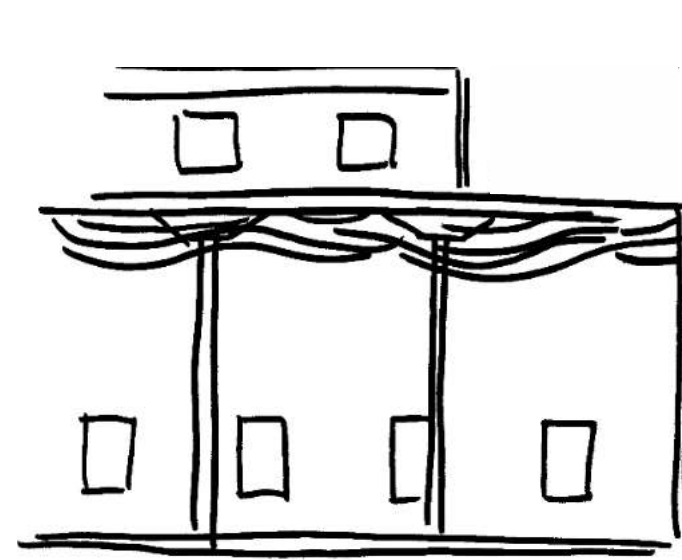
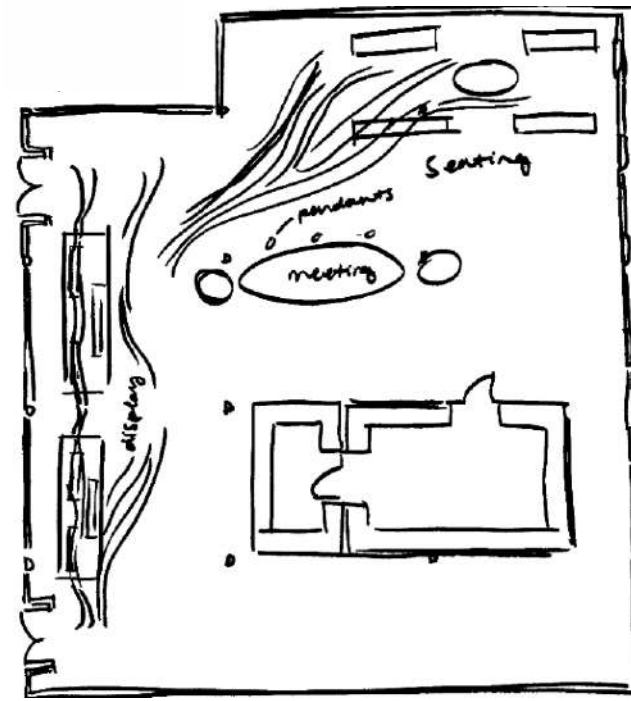
Assignment 9 (Continued): The top two smaller images are the plan and section drawings of the first solution to the stairs issue. The perspective of the first solution is the top image. The three images below these are the drawings for the second solution of the stairs issue.



Elizabeth McLeod

IDSN 2102 F19

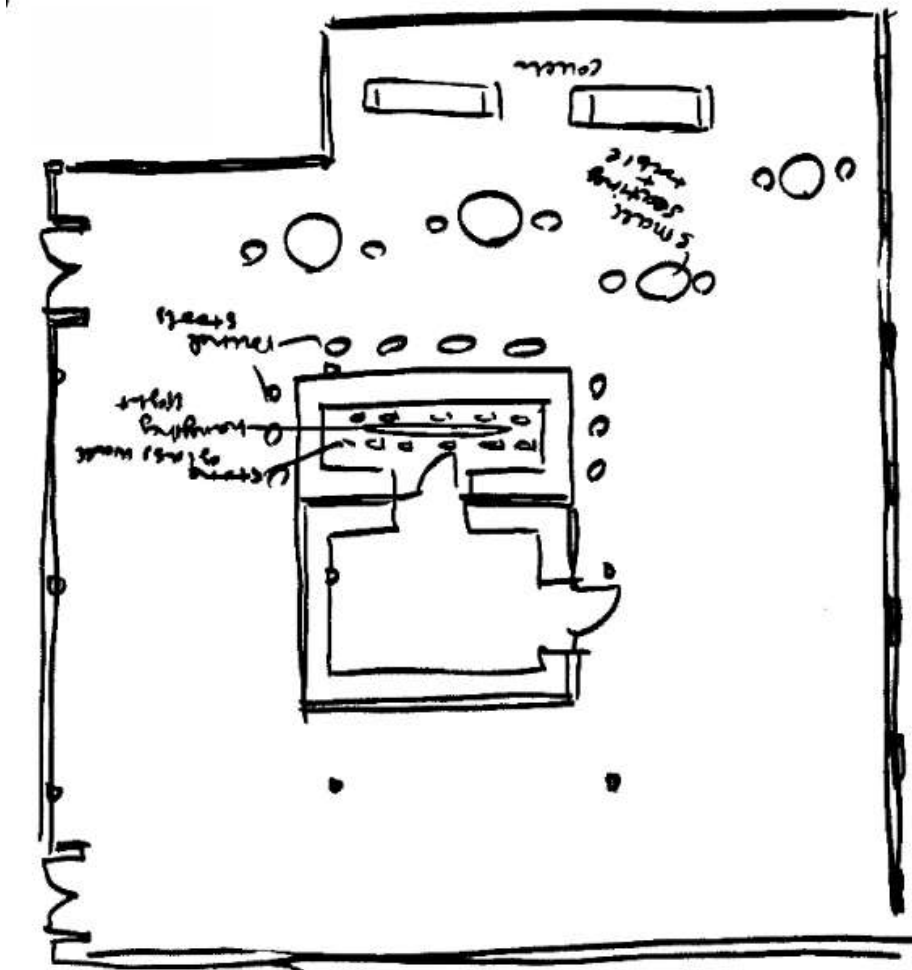
Assignment 9 (Continued): The top three images are the plan, section, and perspective drawings for the first solution to the ceiling issue. The bottom three images are the plan, section, and perspective drawings for the second solution for the ceiling issue.



Elizabeth McLeod

IDSN 2102 F19

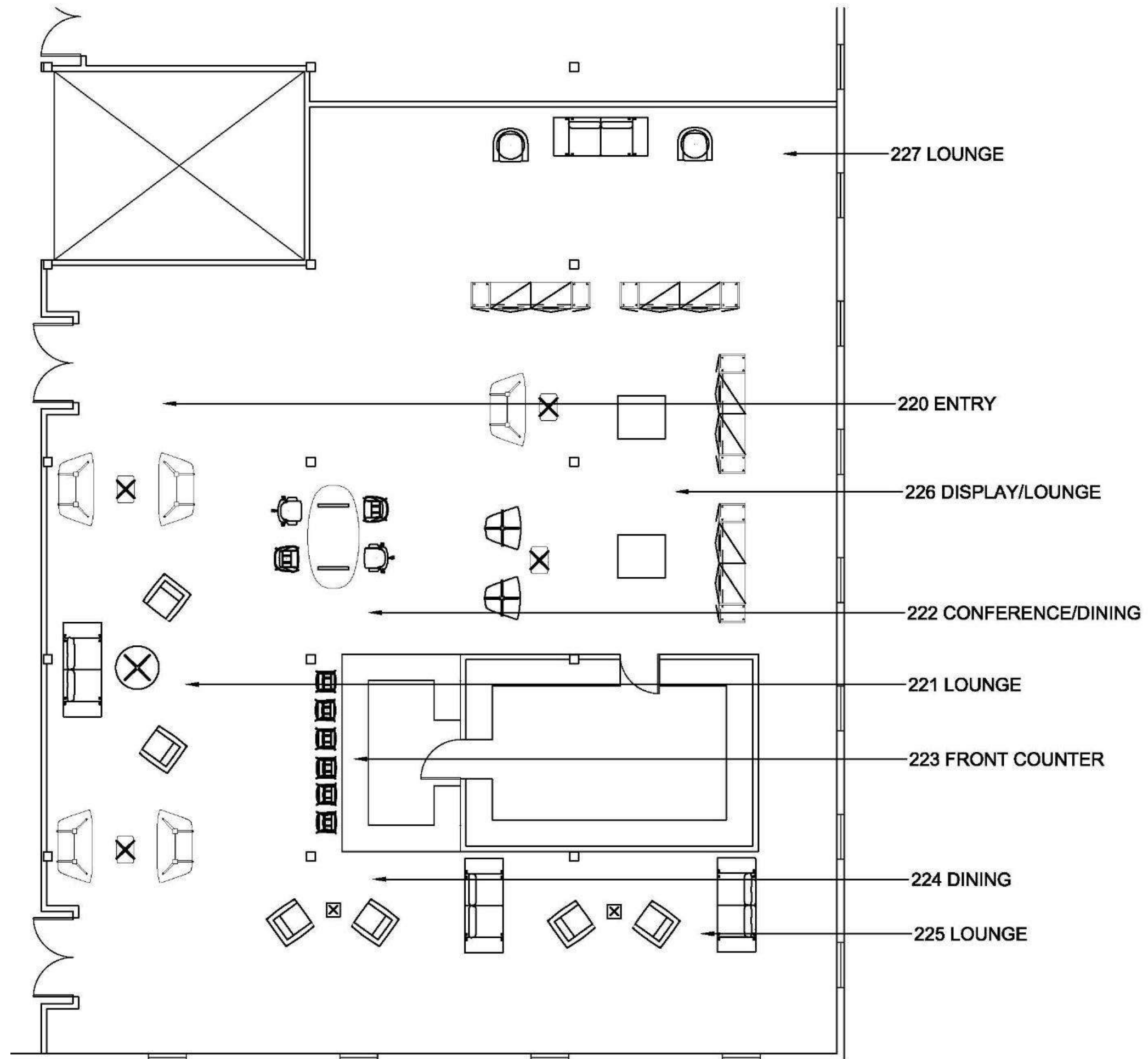
Assignment 9 (Continued): The top three images are the plan, section, and perspective drawings of the first solution to the back of house issue. The bottom three images are the plan (bottom left), section (middle right), and perspective (bottom right) drawings of the second solution to the back of house issue.



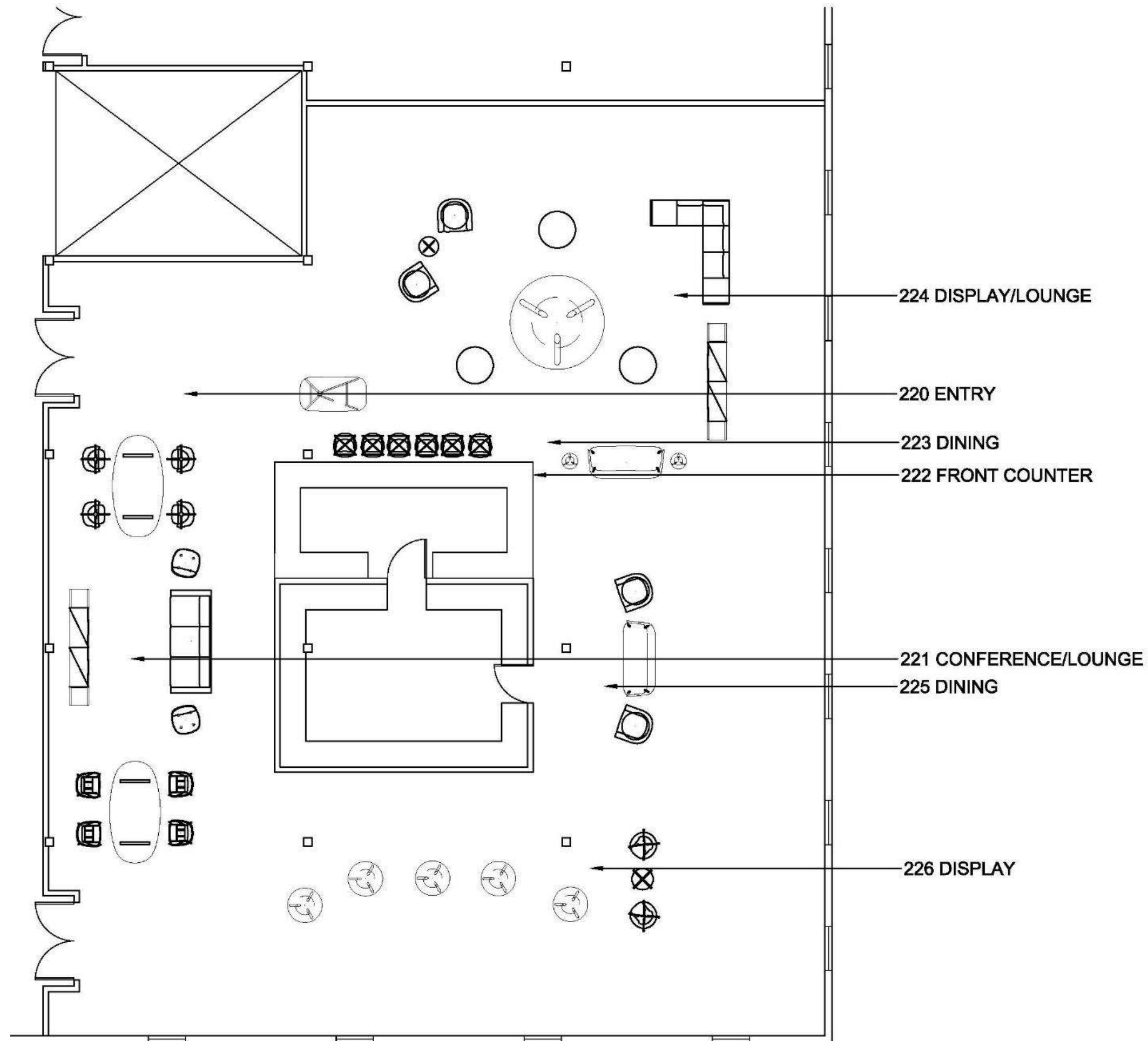
Elizabeth McLeod
IDSN 2102 F19

Assignment 10: Three furniture plans were created in order to show the potential seating and display arrangements for the Hughes Tobacco Warehouse as a retail/display space. To the right is the first furniture plan.

Elizabeth McLeod
IDSN 2102 F19

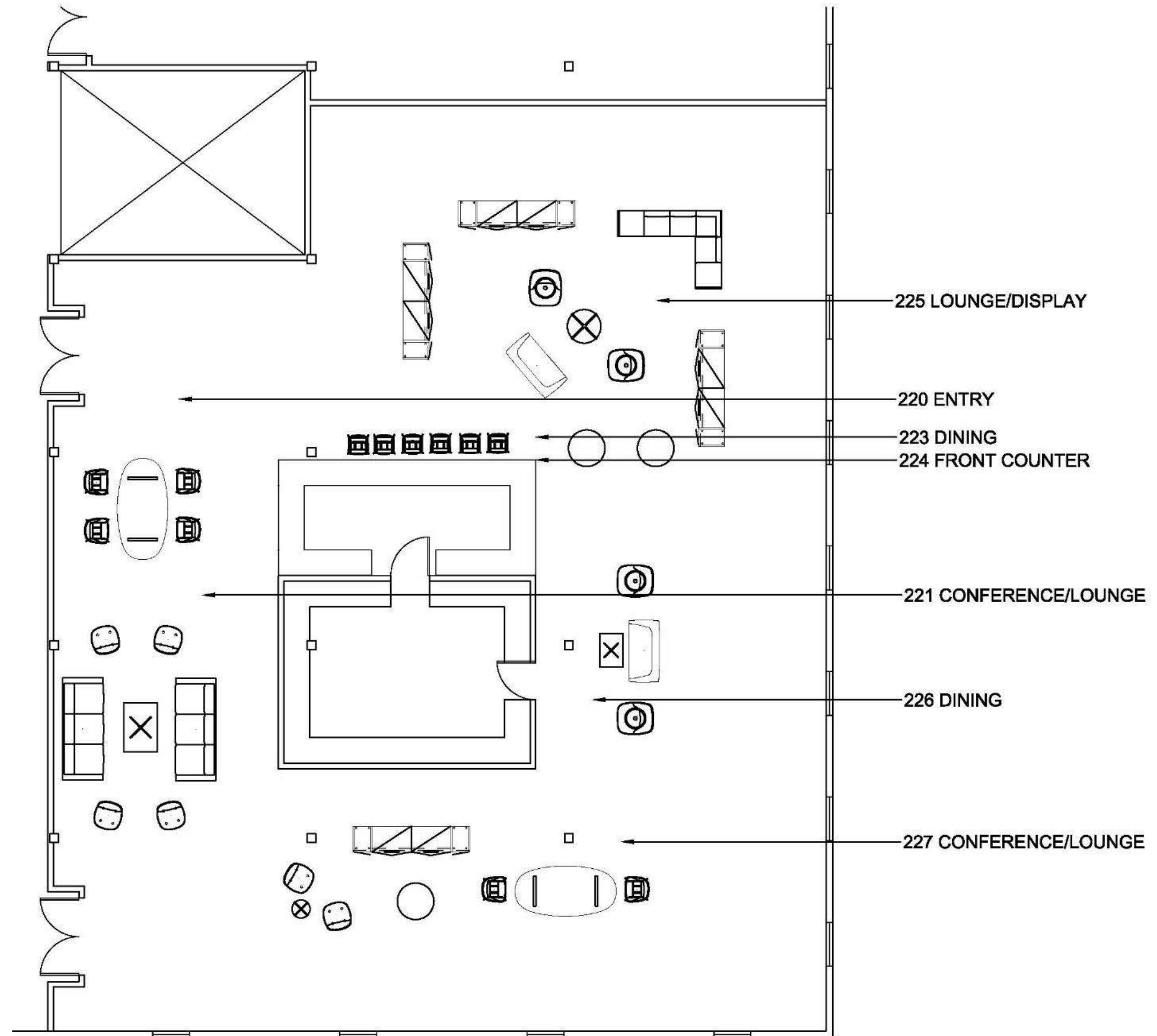


Assignment 10: Three furniture plans were created in order to show the potential seating and display arrangements for the Hughes Tobacco Warehouse as a retail/display space. To the right is the second furniture plan.



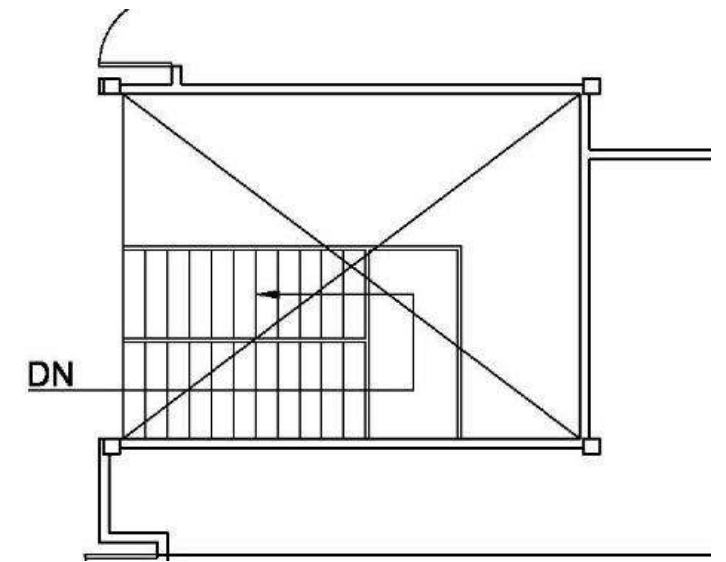
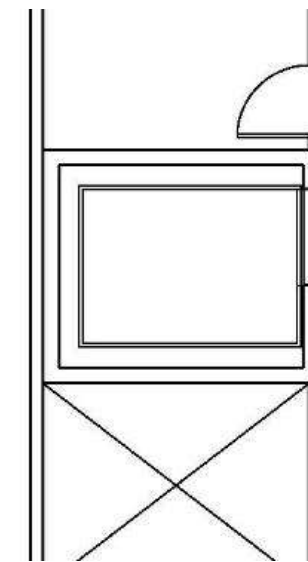
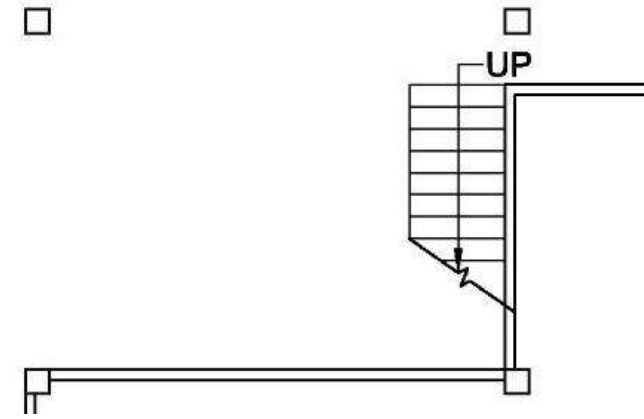
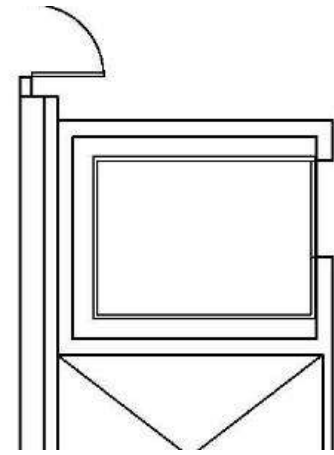
Elizabeth McLeod
IDSN 2102 F19

Assignment 10: Three furniture plans were created in order to show the potential seating and display arrangements for the Hughes Tobacco Warehouse as a retail/display space. To the right is the third furniture plan.



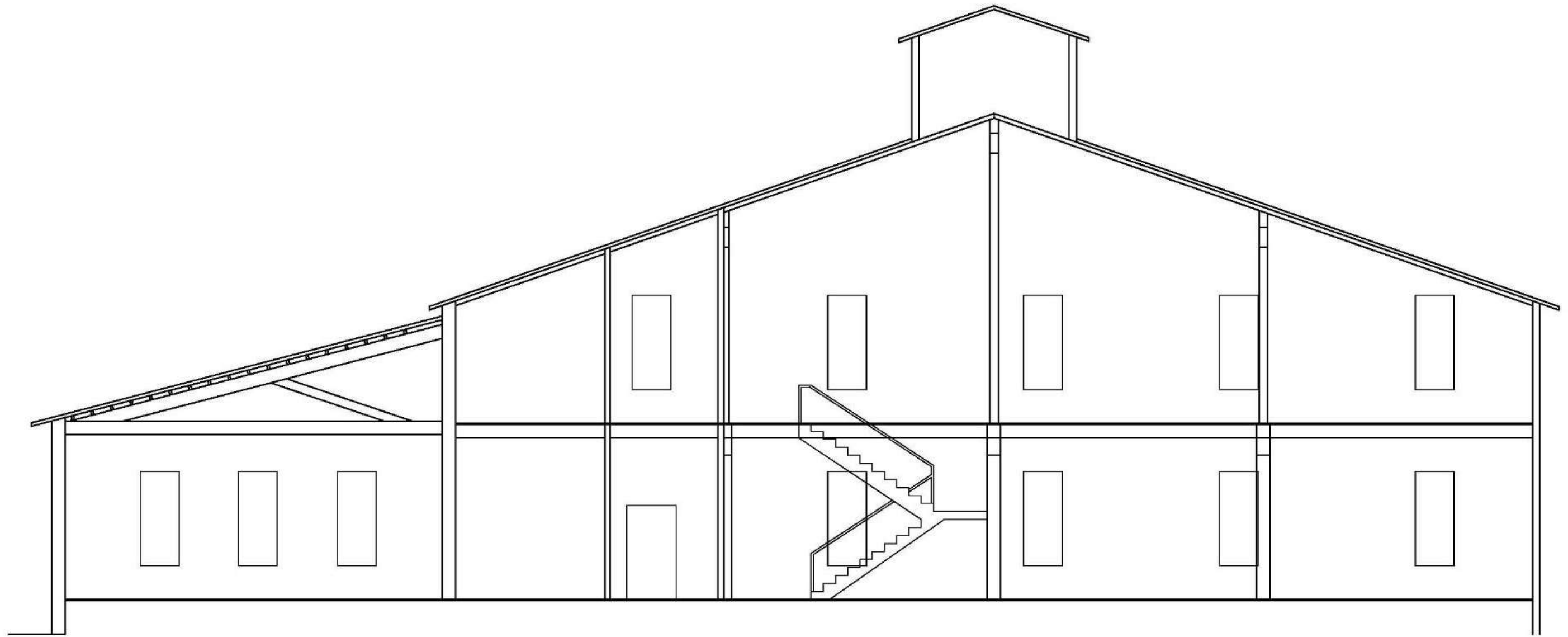
Elizabeth McLeod
IDSN 2102 F19

Assignment 11: Two plans and a section drawing were created in AutoCAD to show a scissor staircase in the warehouse.



Elizabeth McLeod

IDSN 2102 F19



Assignment 11: Two plans and a section drawing were created in AutoCAD to show an L shaped staircase in the warehouse.

Elizabeth McLeod
IDSN 2102 F19

