

Julia Quayle
Portfolio 1
IDSN 2102 F19

ASSIGNMENT 1

Using engineering and architectural scales to convert distances

ENGINEERING SCALE

1" = 10.0'

24.0'

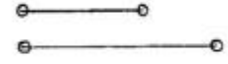
86.0'



1" = 40.0'

160.0'

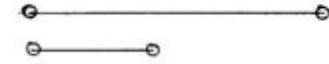
245.0'



1" = 200.0'

1000.0'

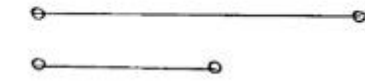
400.0'



1" = 20.0'

110.0'

60.0'



ARCHITECTURAL SCALE

Full

6 1/4"

9 3/8"

1/4" = 1'-0"

24'-8"

30'-6"

1/8" = 1'-0"

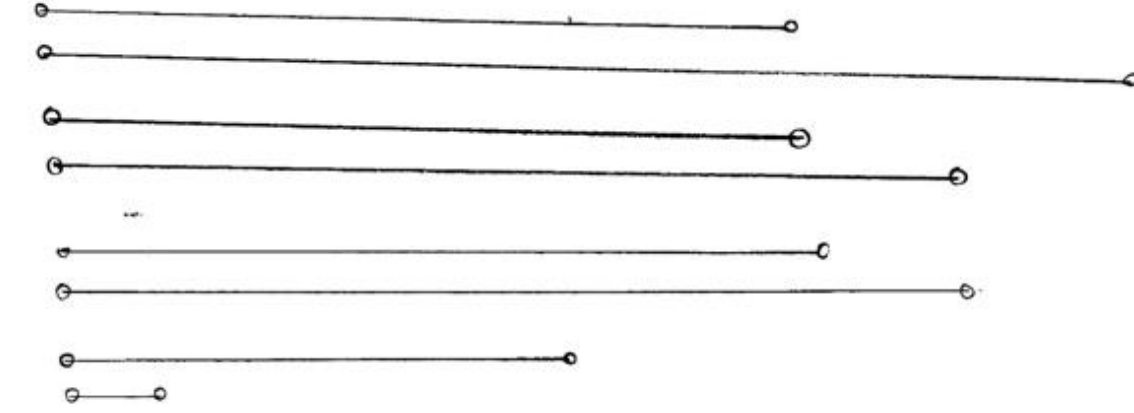
49'-4"

61'-0"

1" = 1'-0"

4'-6"

0'-8"

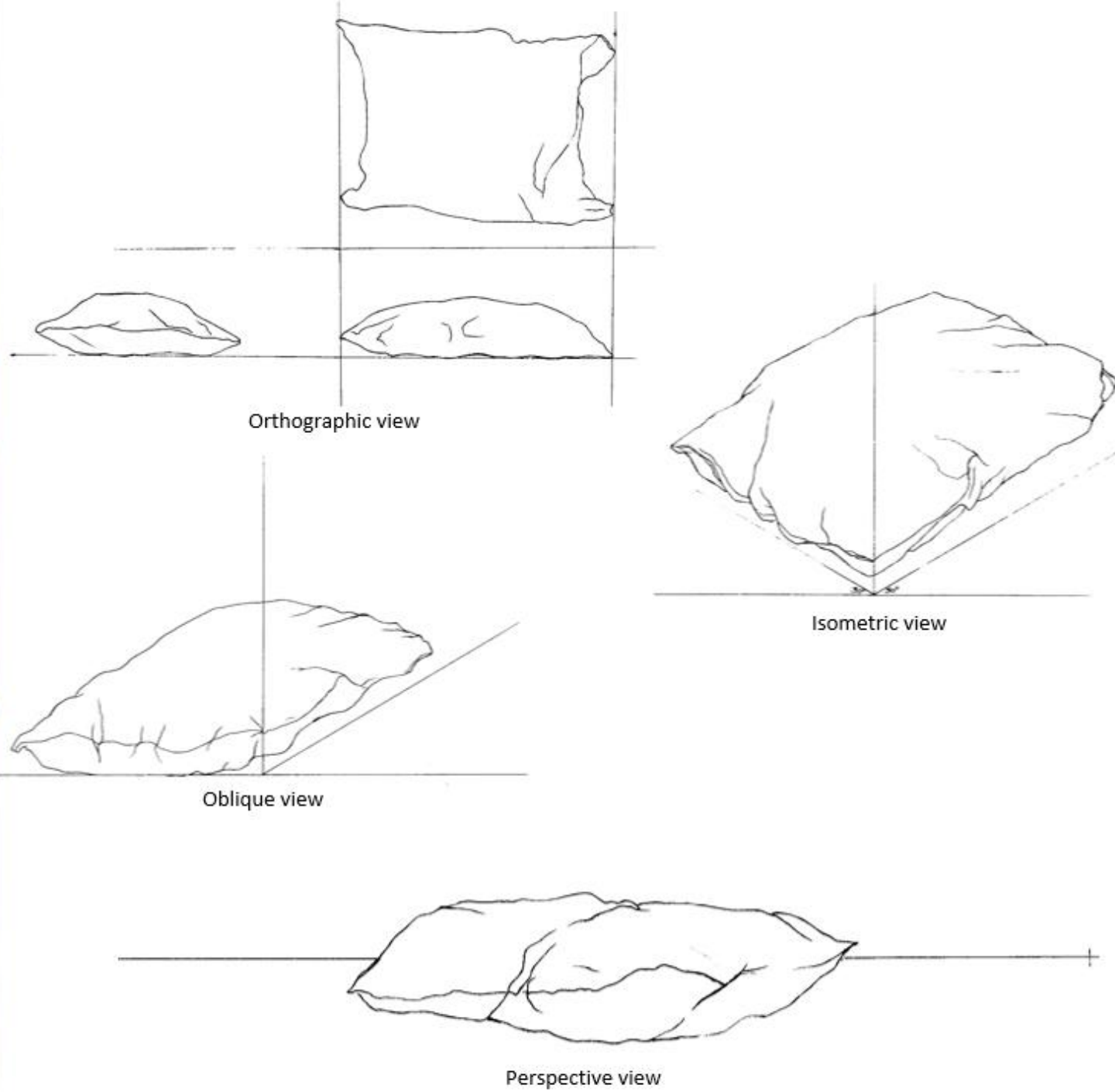


Julia Quayle

IDSN 2102 F19

ASSIGNMENT 2

Orthographic, isometric, oblique, and perspective views of a pillow.

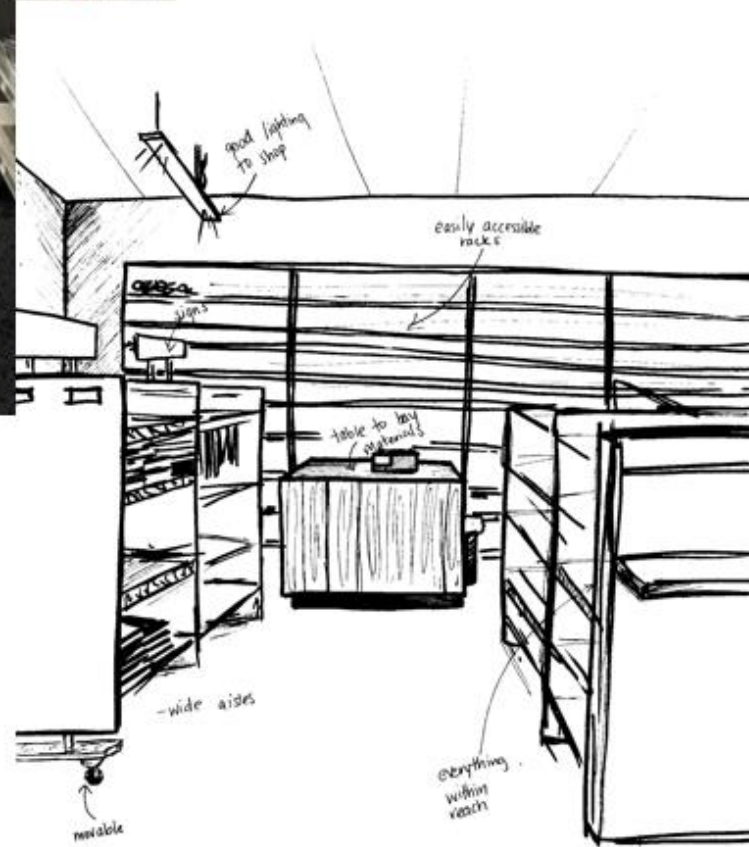


Julia Quayle

IDSN 2102 F19

ASSIGNMENT 3

Photograph and sketch an area where you shop alone

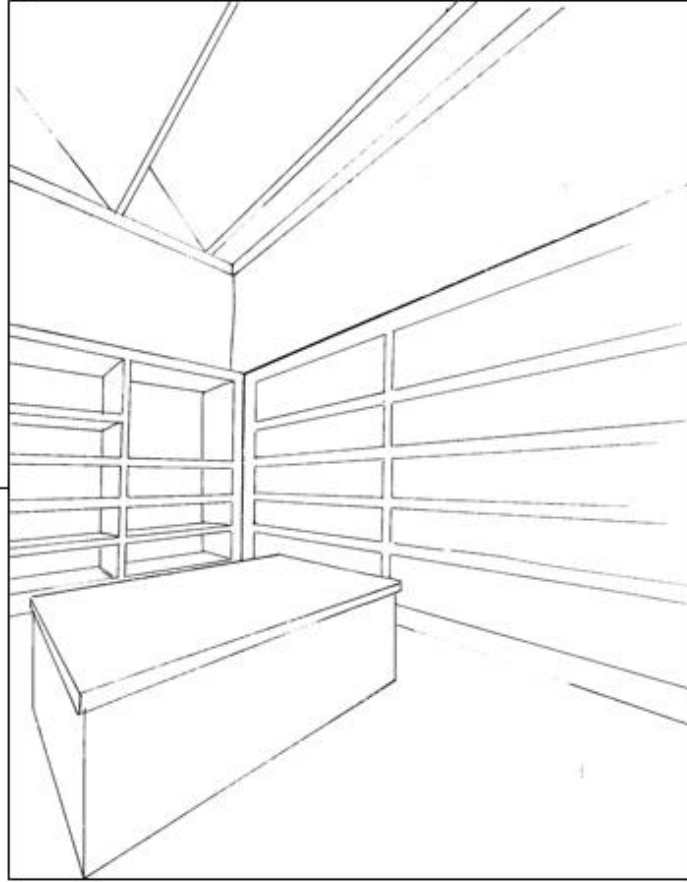
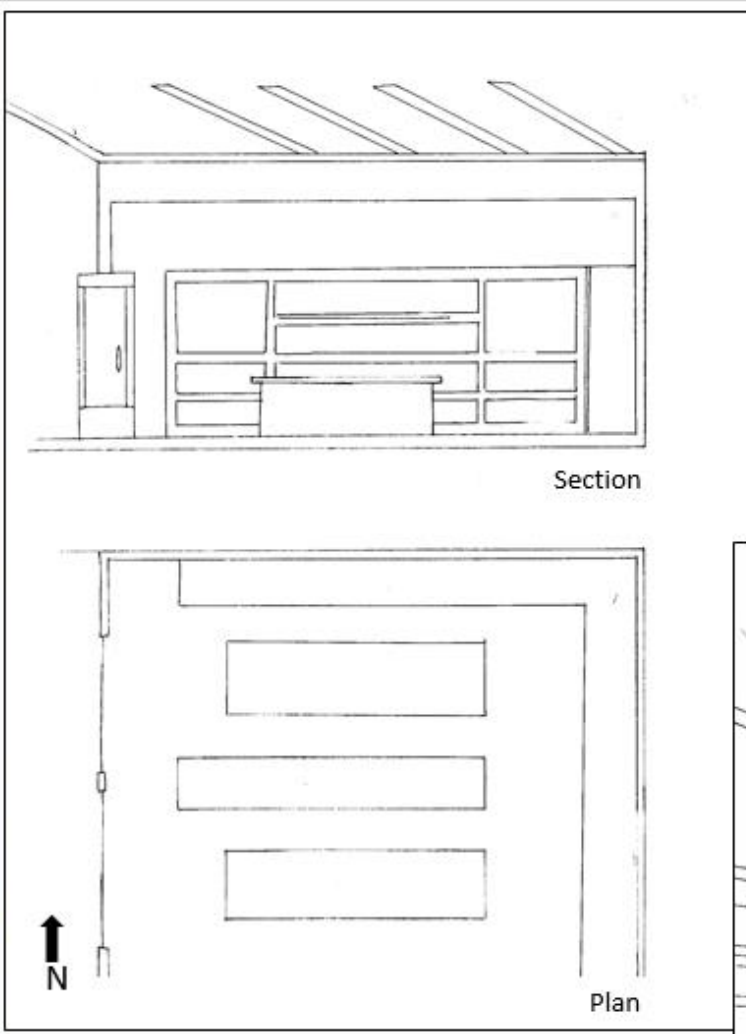


Julia Quayle

IDSN 2102 F19

ASSIGNMENT 3

Modified area
for shopping
alone based on
photograph



Julia Quayle

IDSN 2102 F19

ASSIGNMENT 3

Photograph and sketch an area where you eat and shop at the same time.

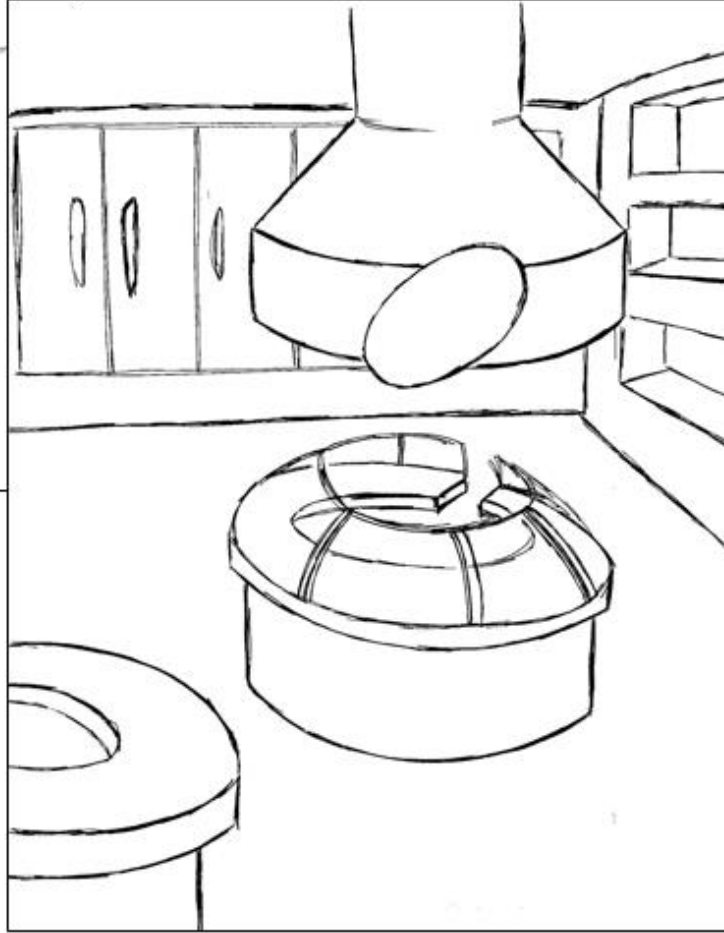
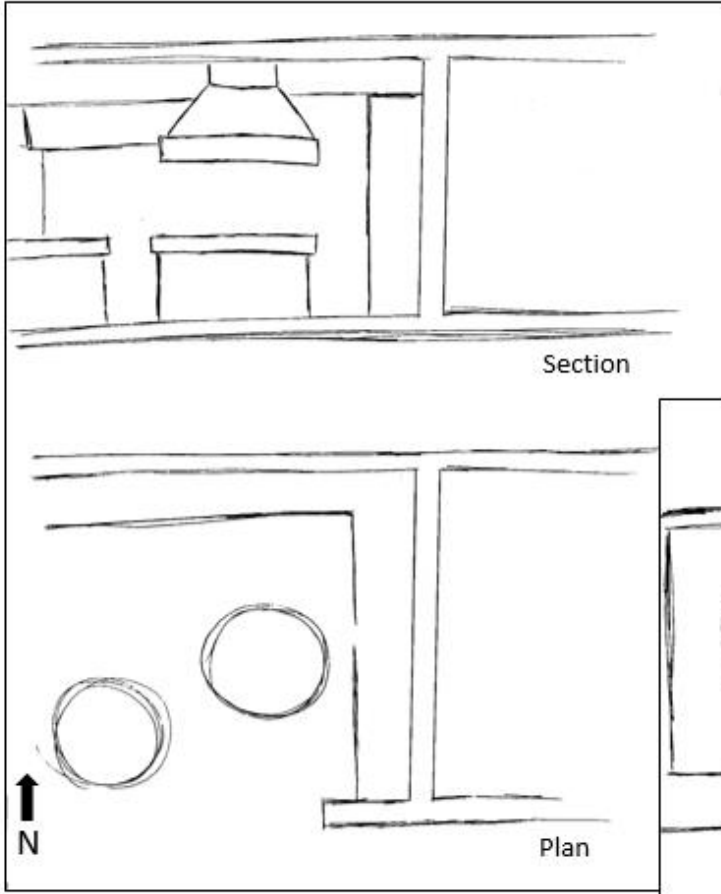


Julia Quayle

IDSN 2102 F19

ASSIGNMENT 3

Modified area
for eating
while
shopping
based on
photograph.

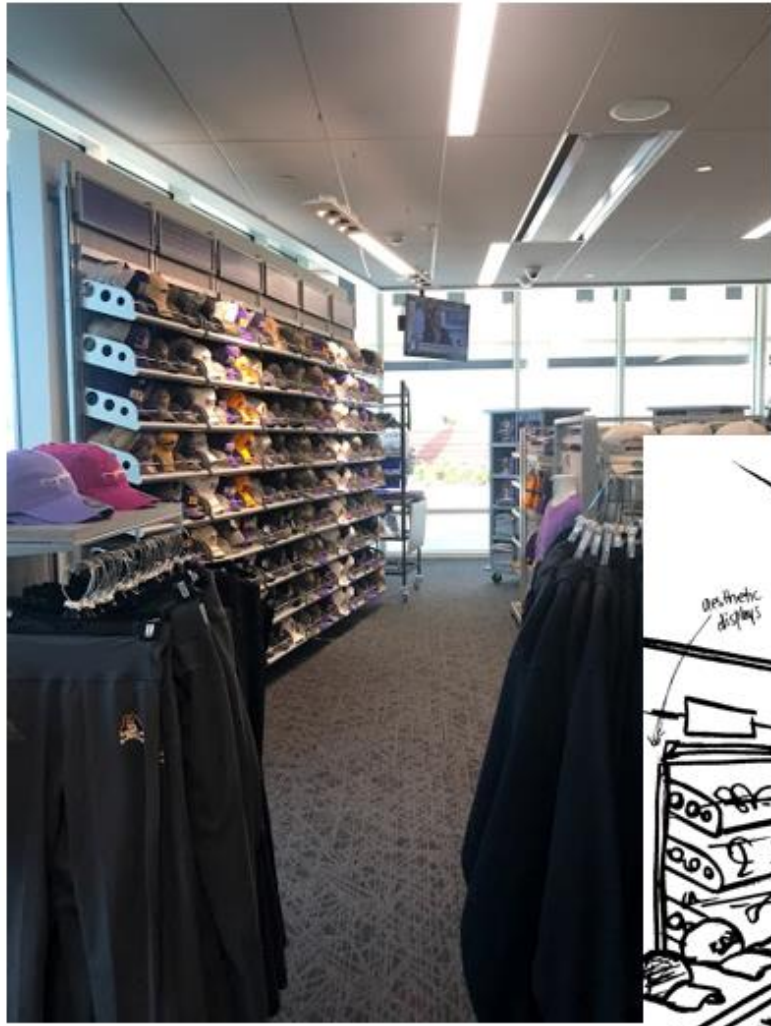


Julia Quayle

IDSN 2102 F19

ASSIGNMENT 3

Photograph and sketch an area where you shop with friends.

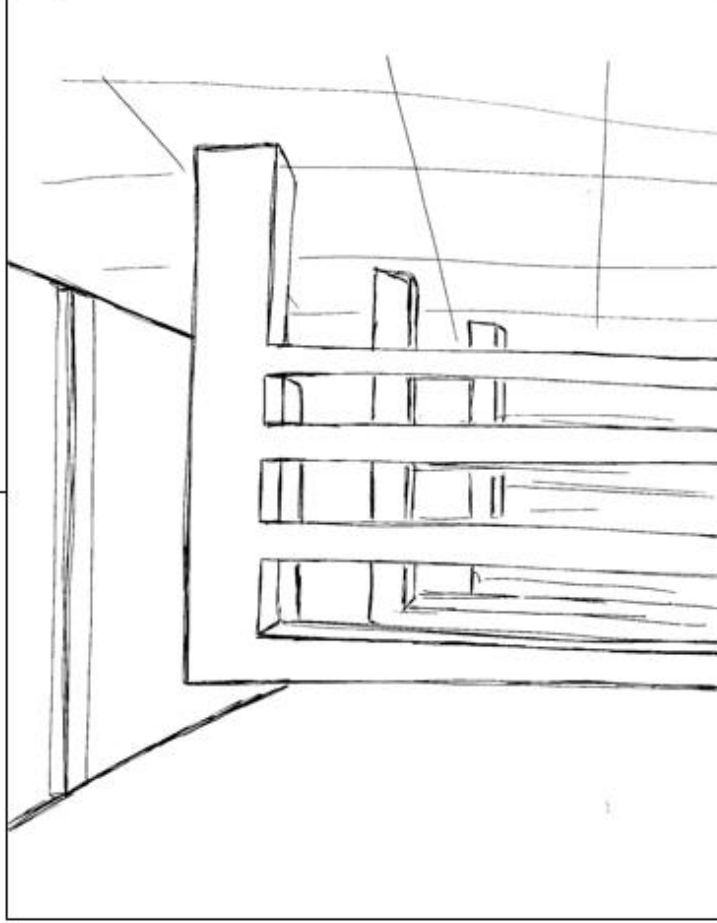
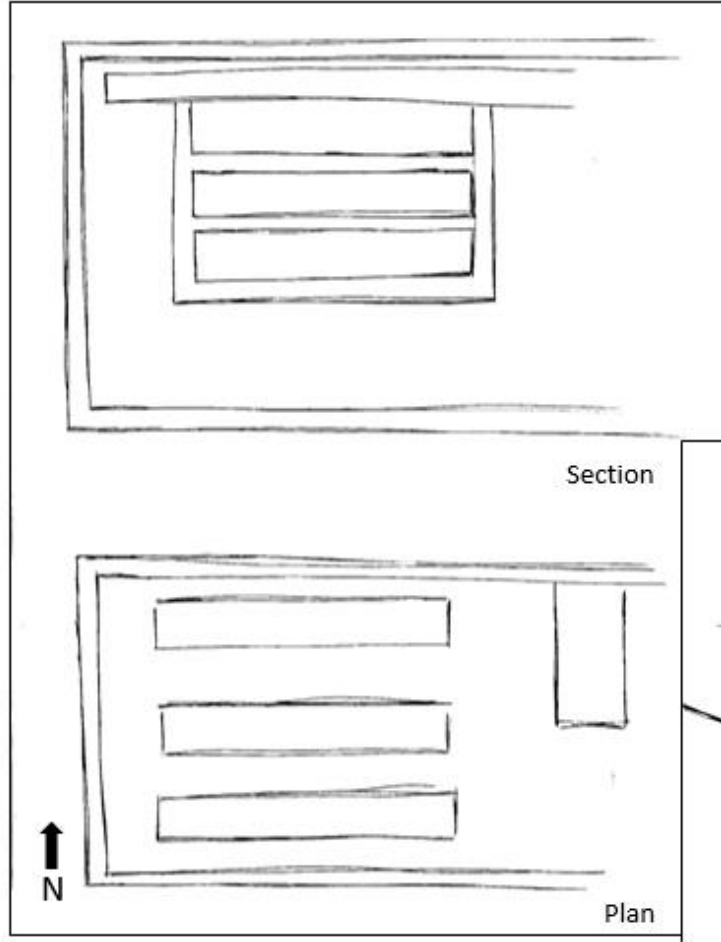


Julia Quayle

IDSN 2102 F19

ASSIGNMENT 3

Modified area
for shopping
while with
friends based
on photograph.

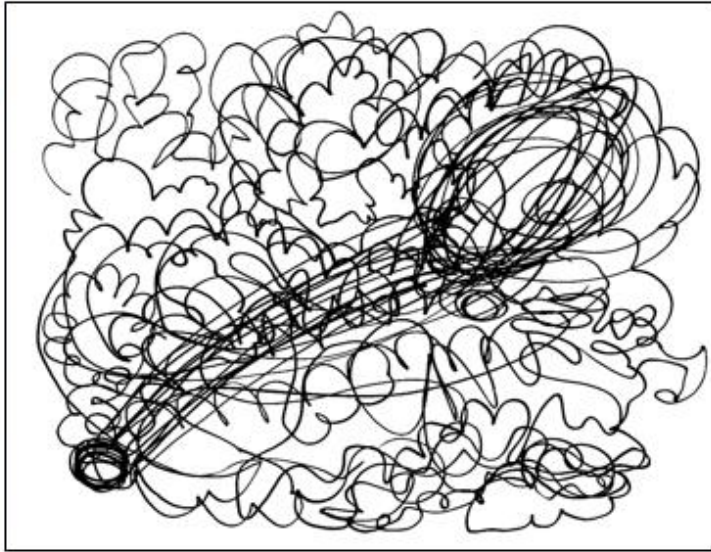


Julia Quayle

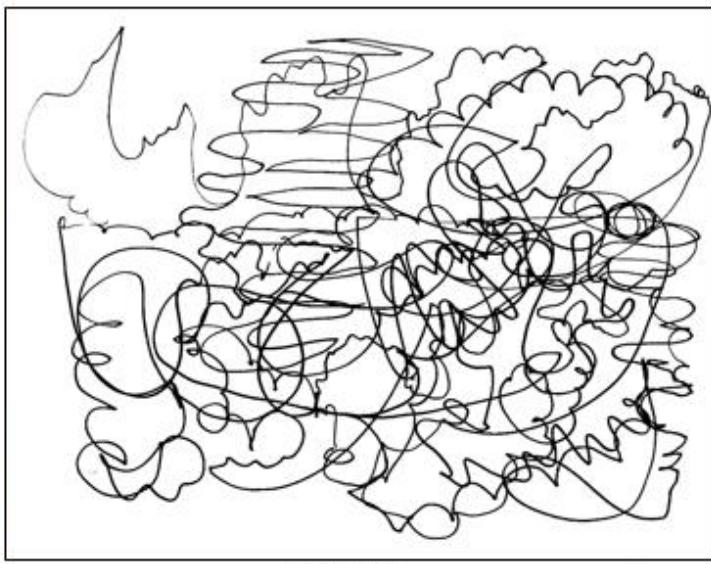
IDSN 2102 F19

ASSIGNMENT 4

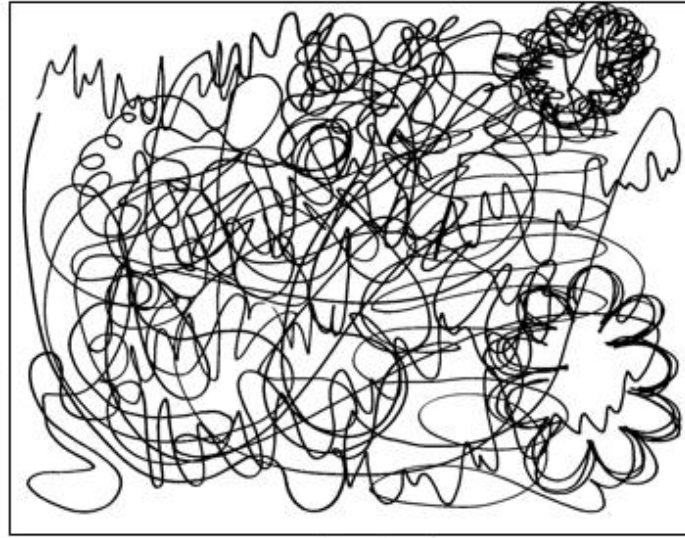
Drawing to folk music from the era of the Hughes tobacco warehouse.



Drawing 3



Drawing 1



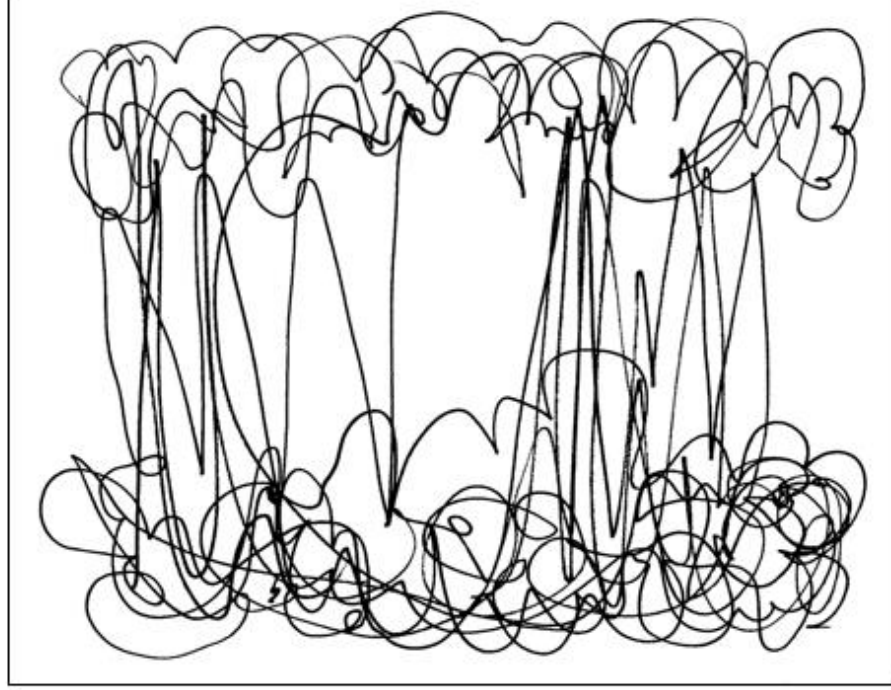
Drawing 2

Julia Quayle

IDSN 2102 F19

ASSIGNMENT 4&5

Final
combination
of music
sketches and
music model.

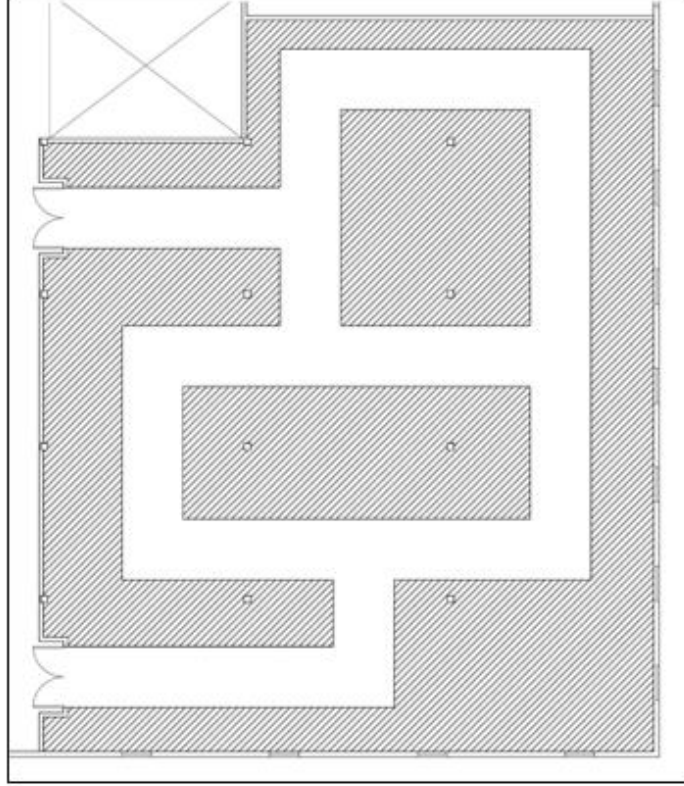
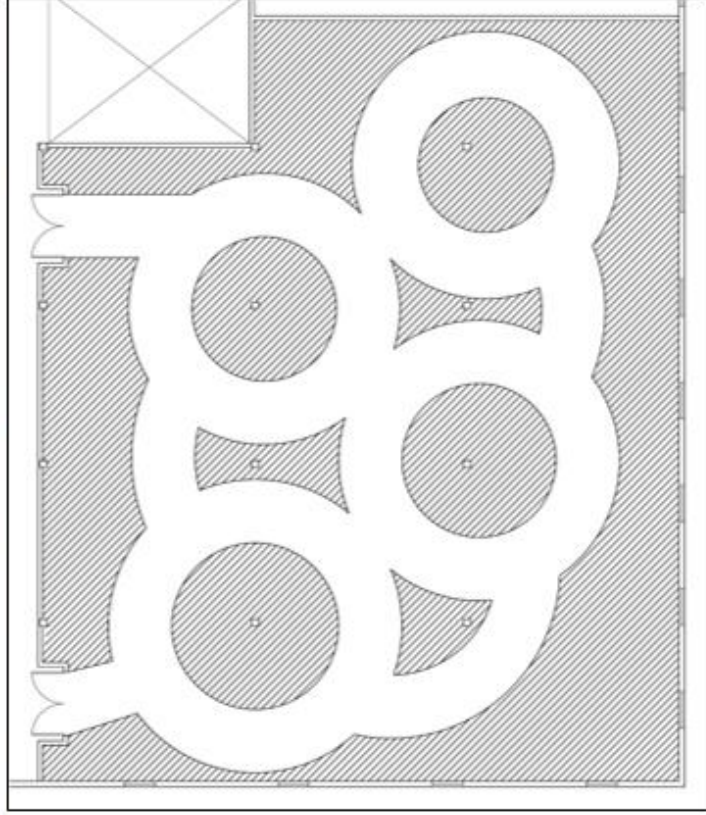


Julia Quayle

IDSN 2102 F19

ASSIGNMENT 6

Circulation plans from
Hughes
Tobacco
warehouse
AutoCAD
floorplan.



Julia Quayle

IDSN 2102 F19