

The left side of the page features several decorative paper cutouts. At the top, there are dark green, scalloped-edged shapes. Below these are lighter green, fern-like cutouts with multiple leaflets. At the bottom, there are yellow and light green cutouts, including a prominent yellow one with a scalloped edge. The cutouts are layered and appear to be attached to a light-colored surface.

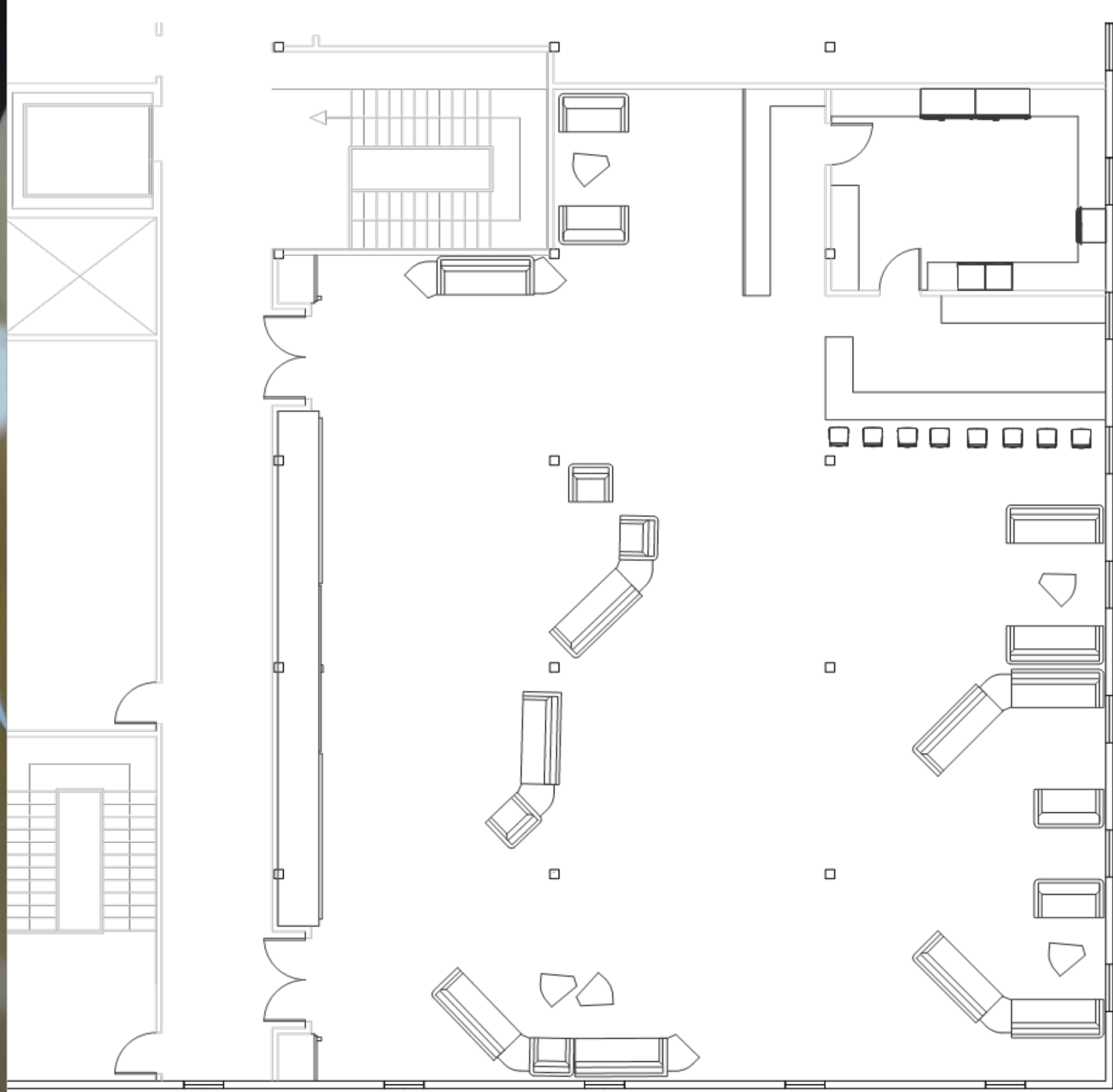
**Julia Quayle**

**Portfolio 3**

**IDSN 2102 F19**

# ASSIGNMENT 12

Final AutoCAD  
floorplan



**Julia Quayle**

**IDSN 2102 F19**

**ASSIGNMENT 13**

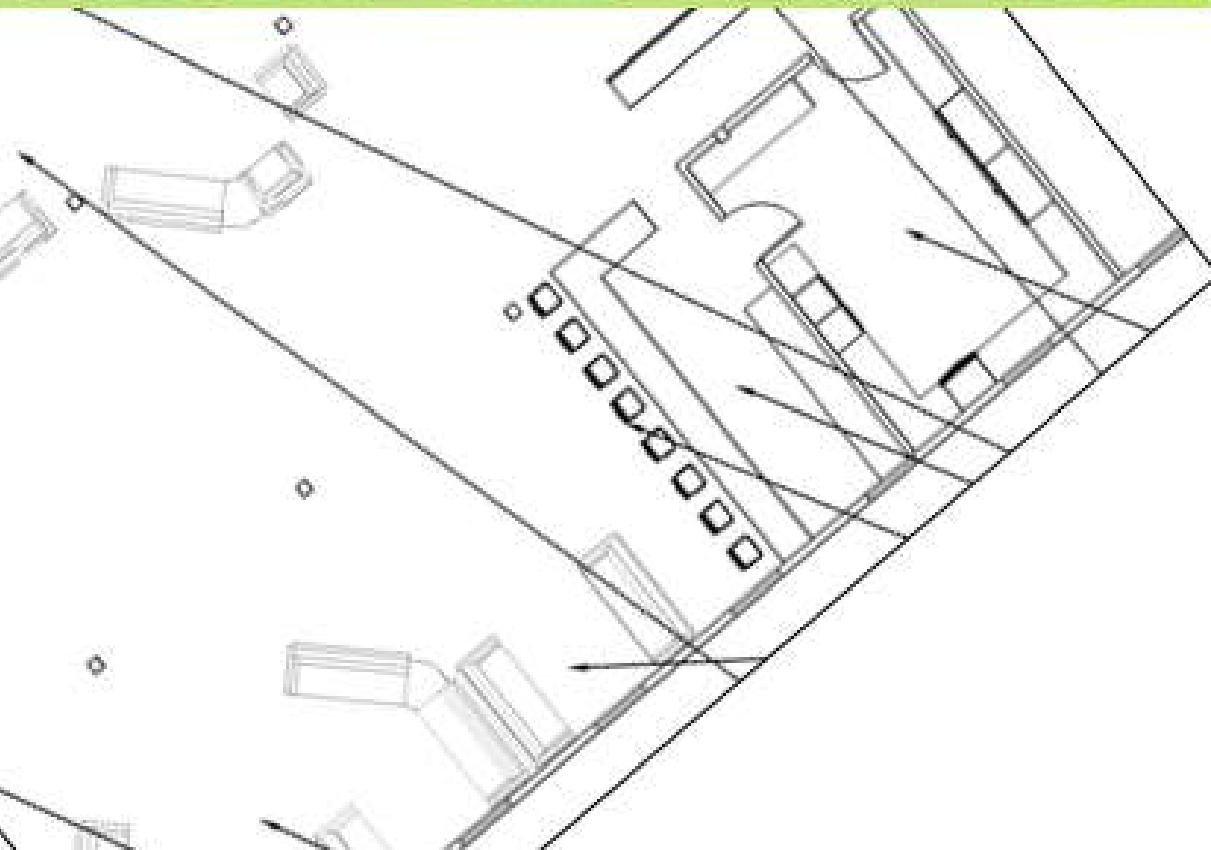
**Color Rationale**

**Julia Quayle**

**IDSN 2102 F19**

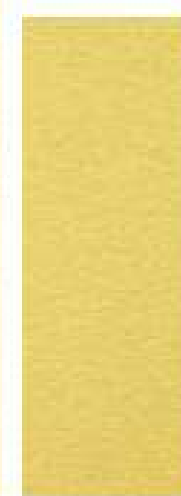
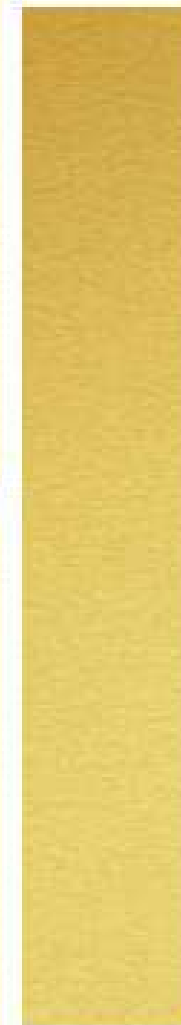
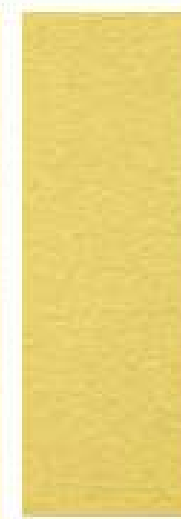
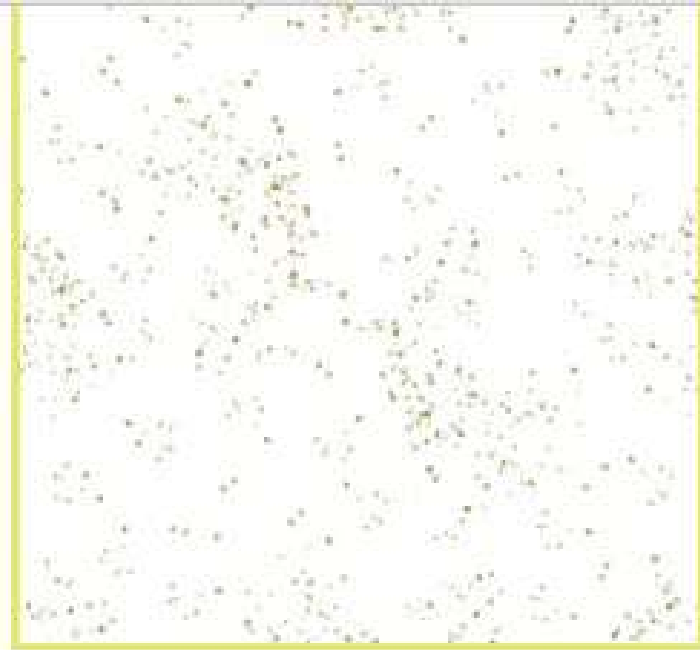


# *historical refinement*



- primarily white interior leaves blank canvas for showcasing products
- green and yellow tones of tobacco leaves are used as accent colors to tie in with history of the building
- brass accents are used to add a polished, finished look to the interior

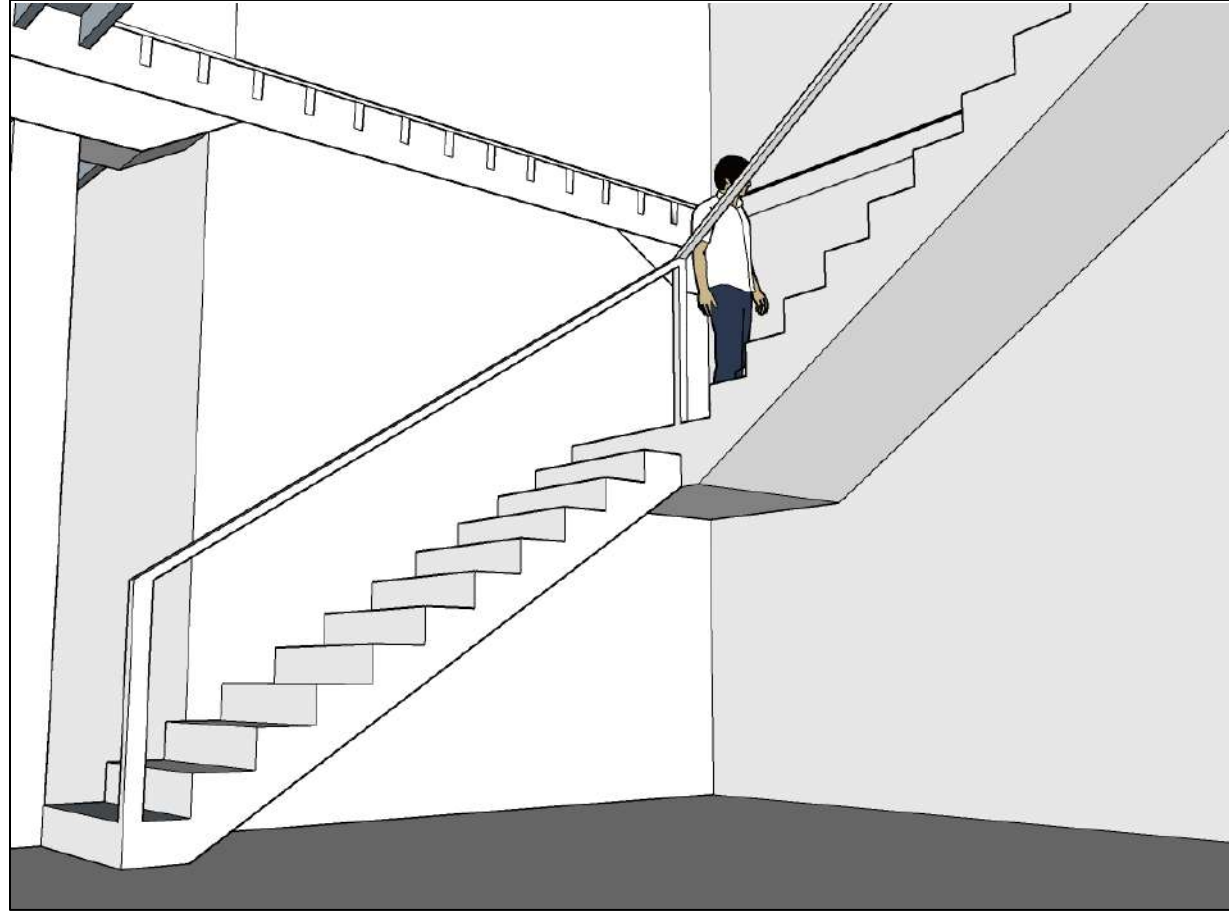
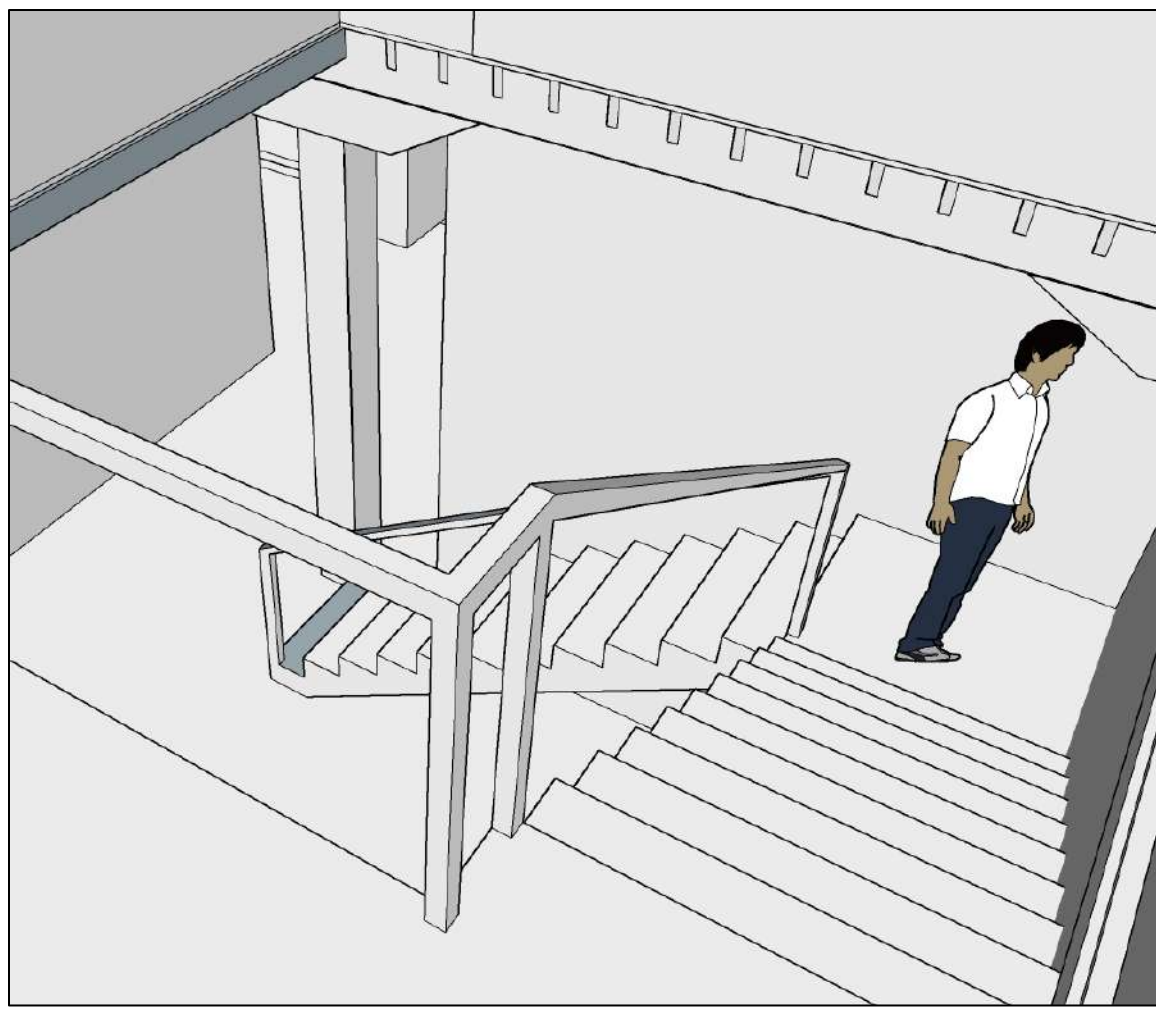
- the space features a coffee house and bar with circulating menus
- East Carolina University student work will be featured on the shelves and walls of the area
- space will be versatile to accommodate diverse product presentations
- a private meeting room is available in house for East Carolina University students to use for communicating with professionals





# ASSIGNMENT 14

L-shaped  
staircase in  
Sketchup

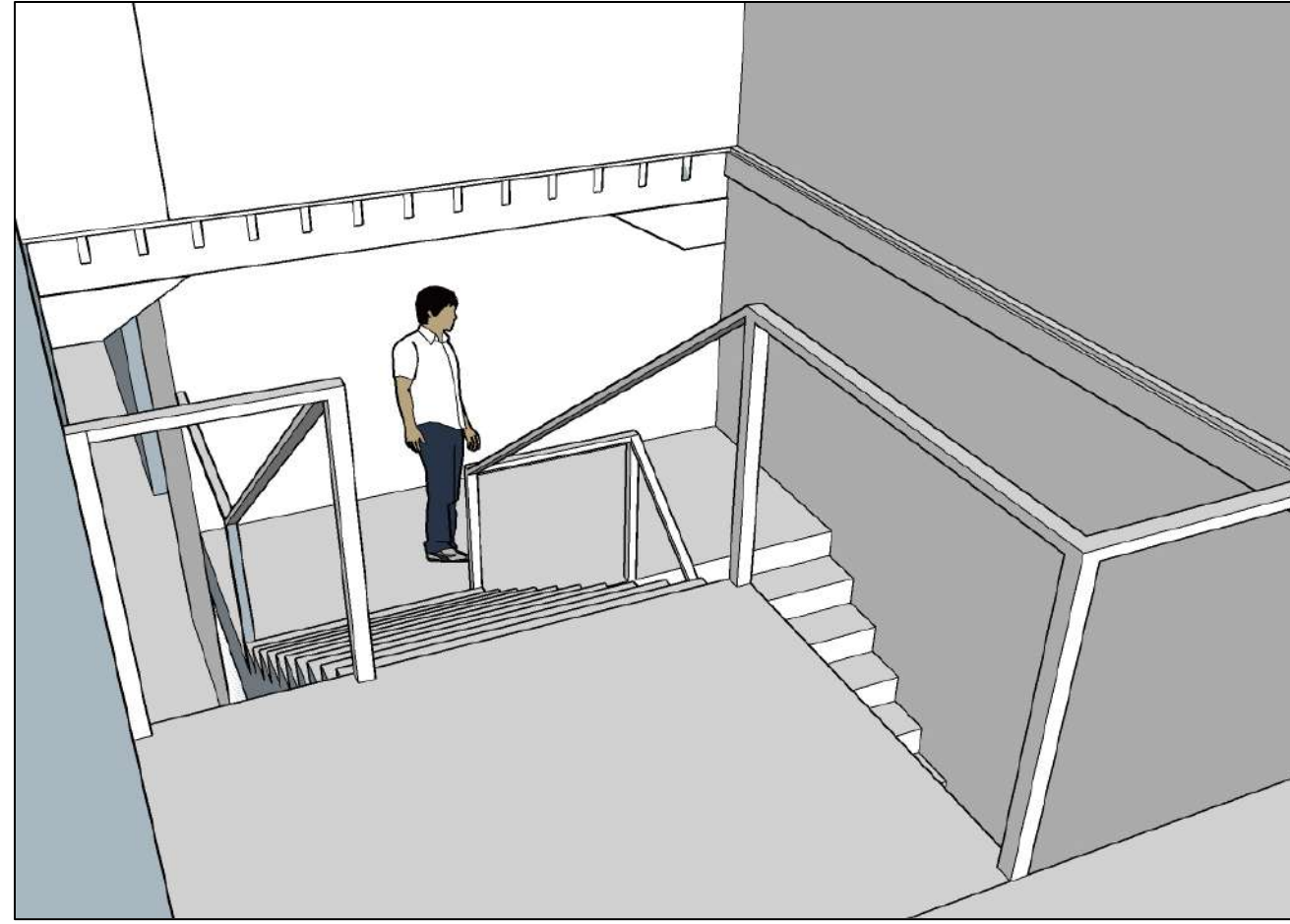


**Julia Quayle**

**IDSN 2102 F19**

# ASSIGNMENT 14

Scissor-shaped  
staircase in  
Sketchup



**Julia Quayle**

**IDSN 2102 F19**



# ASSIGNMENT 16

Final Sketchup  
furniture  
model.



**Julia Quayle**

**IDSN 2102 F19**

# ASSIGNMENT 16

Final Sketchup  
furniture  
model.



**Julia Quayle**

**IDSN 2102 F19**

# ASSIGNMENTS 16&17

Final Sketchup  
furniture  
model and  
video  
walkthrough.



**Julia Quayle**

**IDSN 2102 F19**