

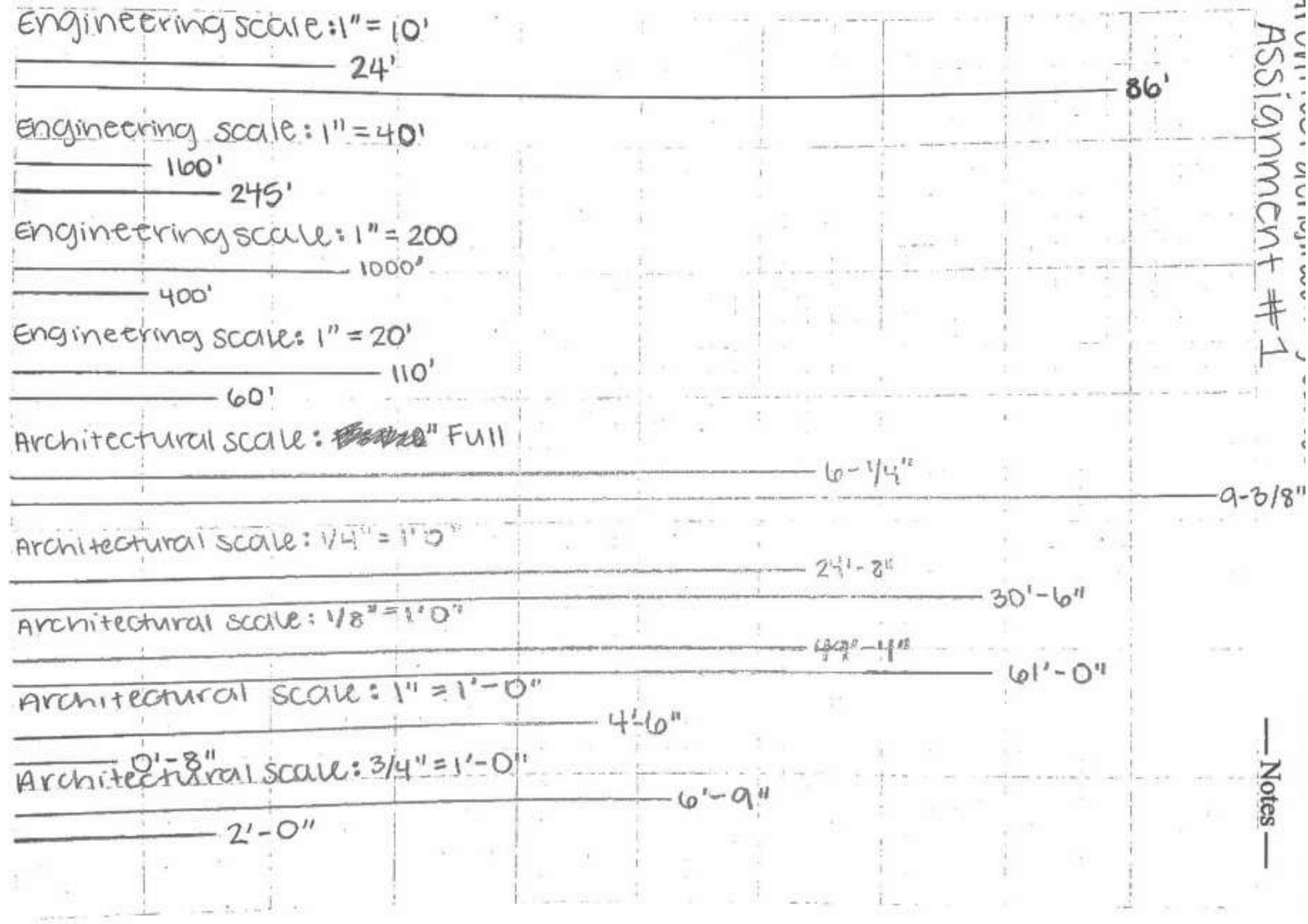


Portfolio 1

Madison Resavy

Assignment 1:

Quick sketch Competencies

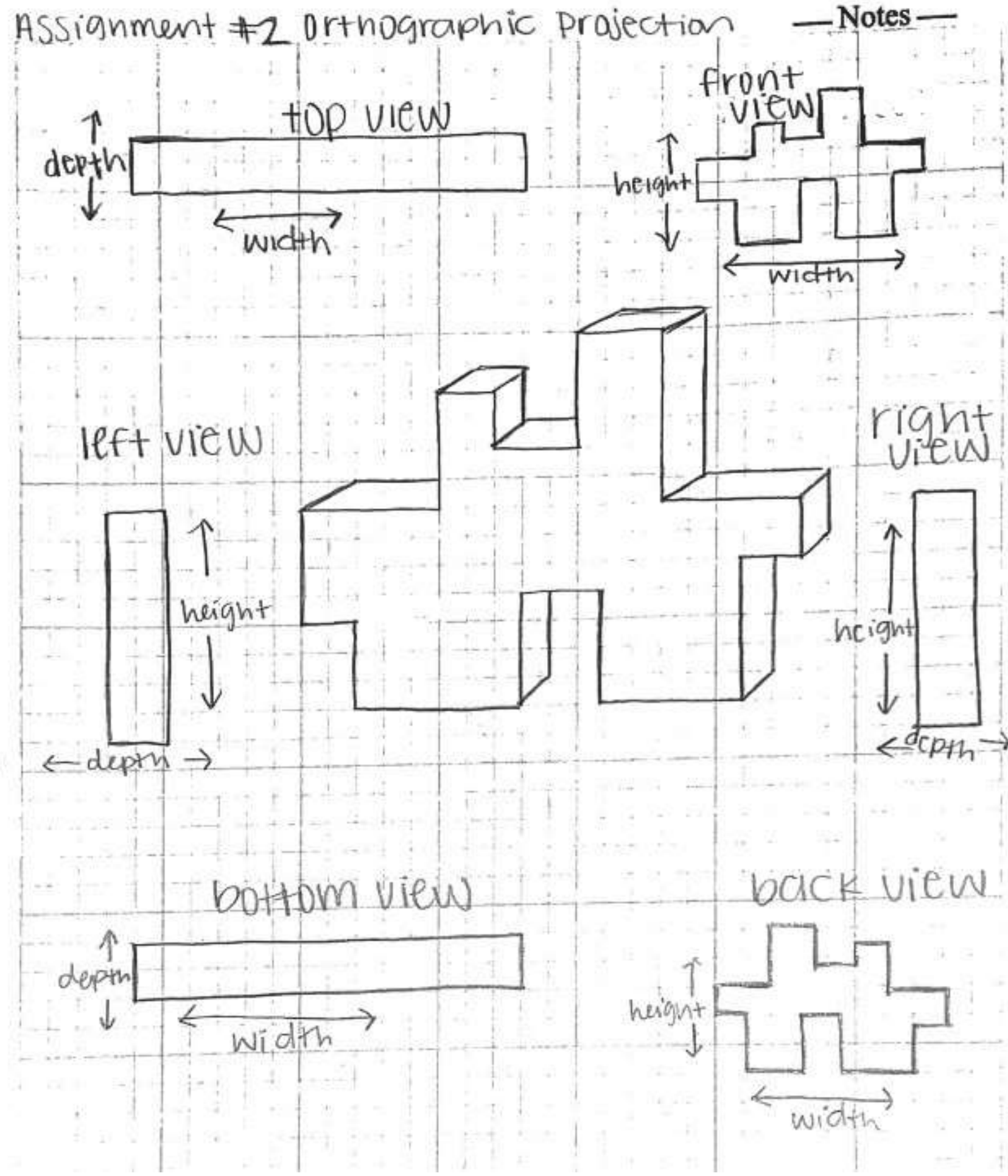


Madison Resavy

IDSN 2102 F19

Assignment 2A:

Orthographic Projection

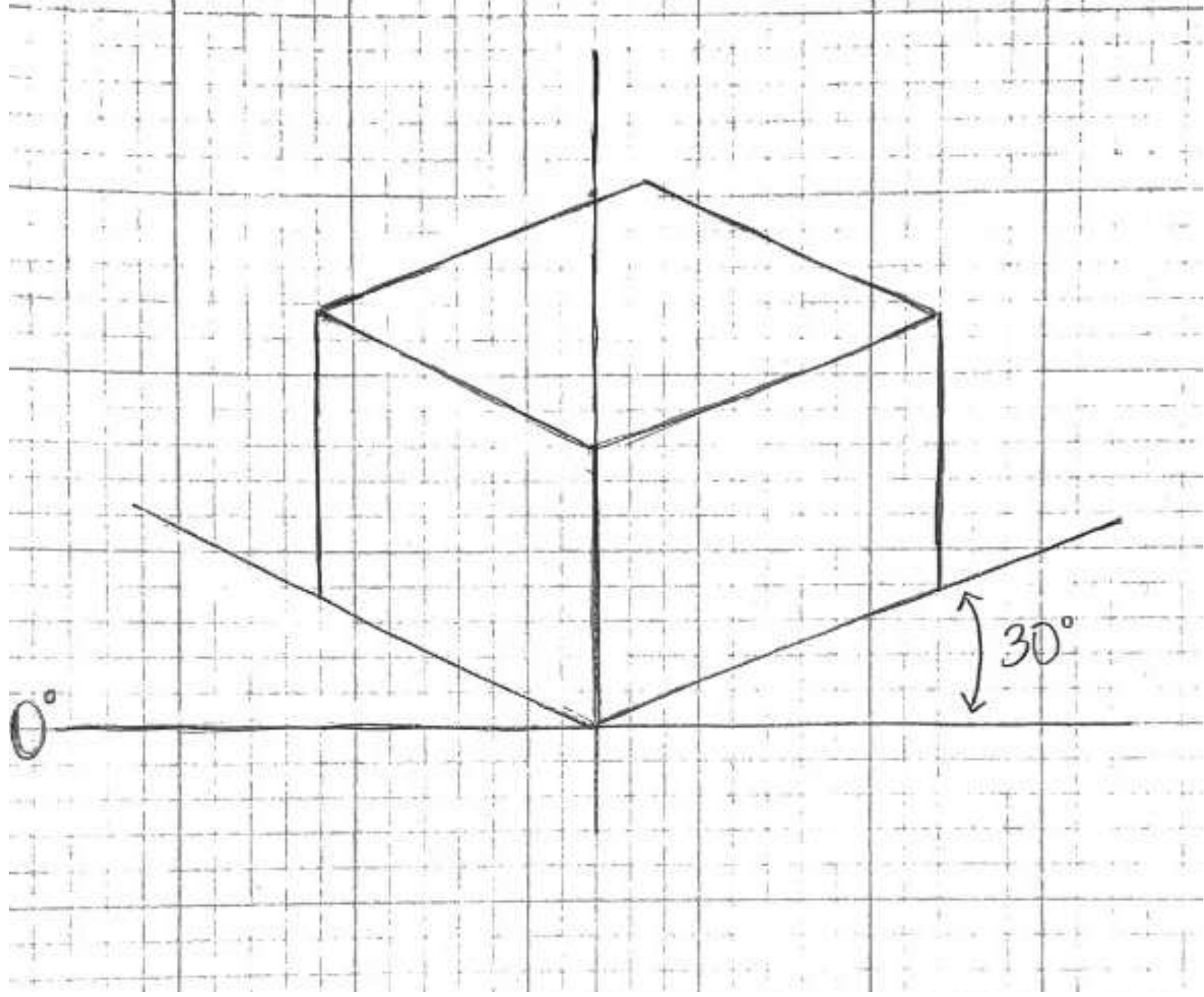


Madison Resavy

IDSN 2102 F19

Assignment 2B:

Isometric projection

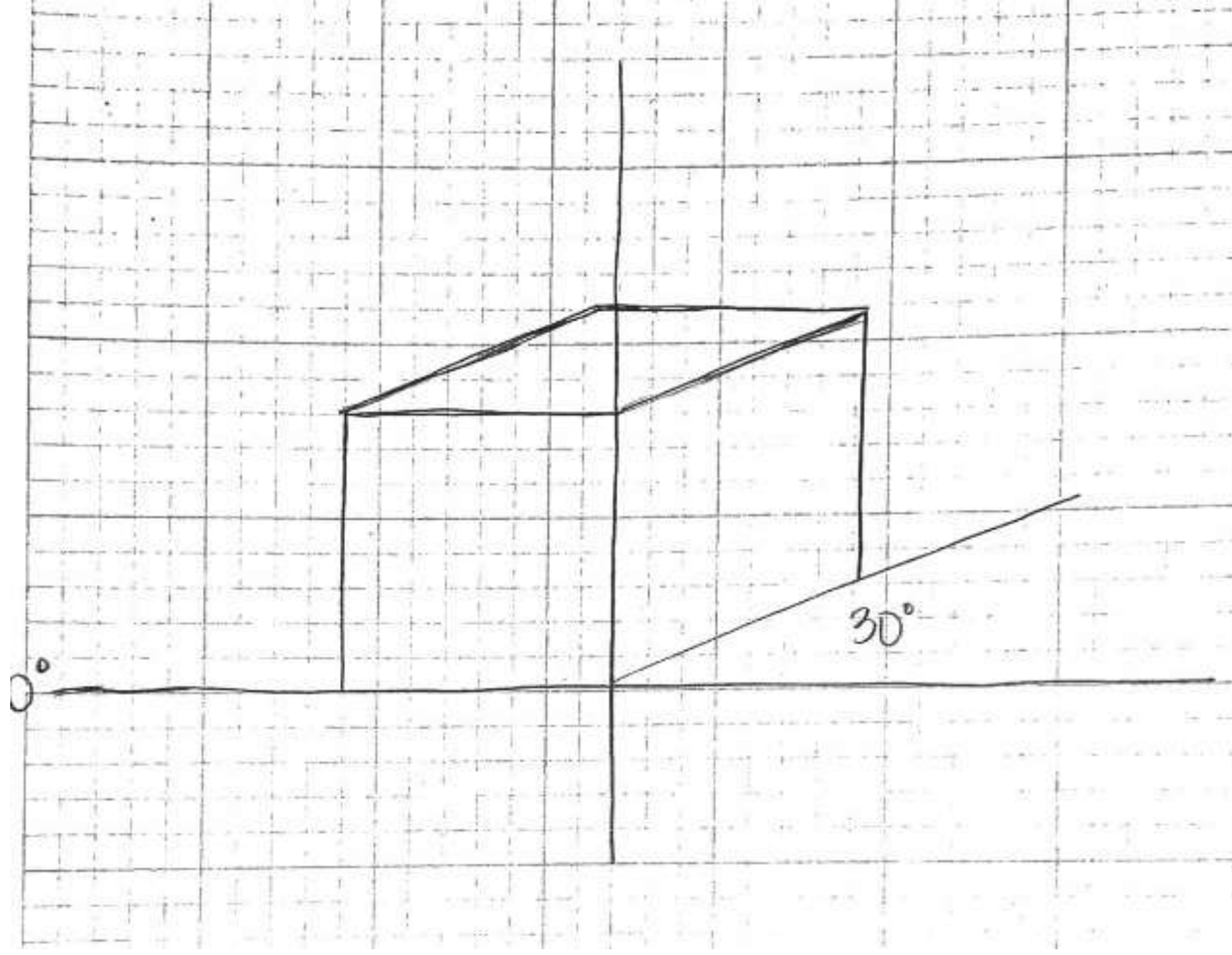


Madison Resavy

IDSN 2102 F19

Assignment 2C:

Oblique Drawing

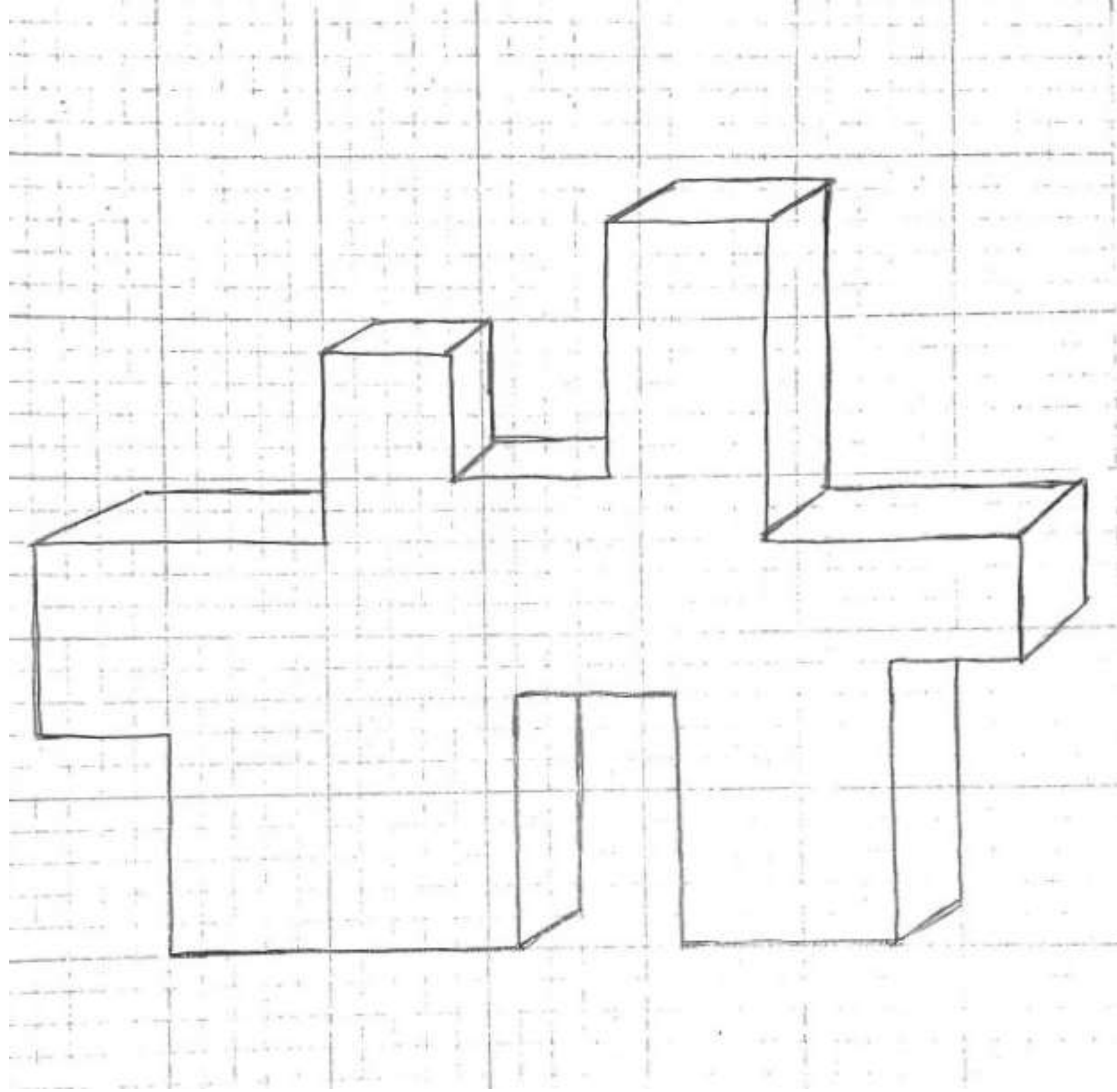


Madison Resavy

IDSN 2102 F19

Assignment 2D:

Perspective Drawing

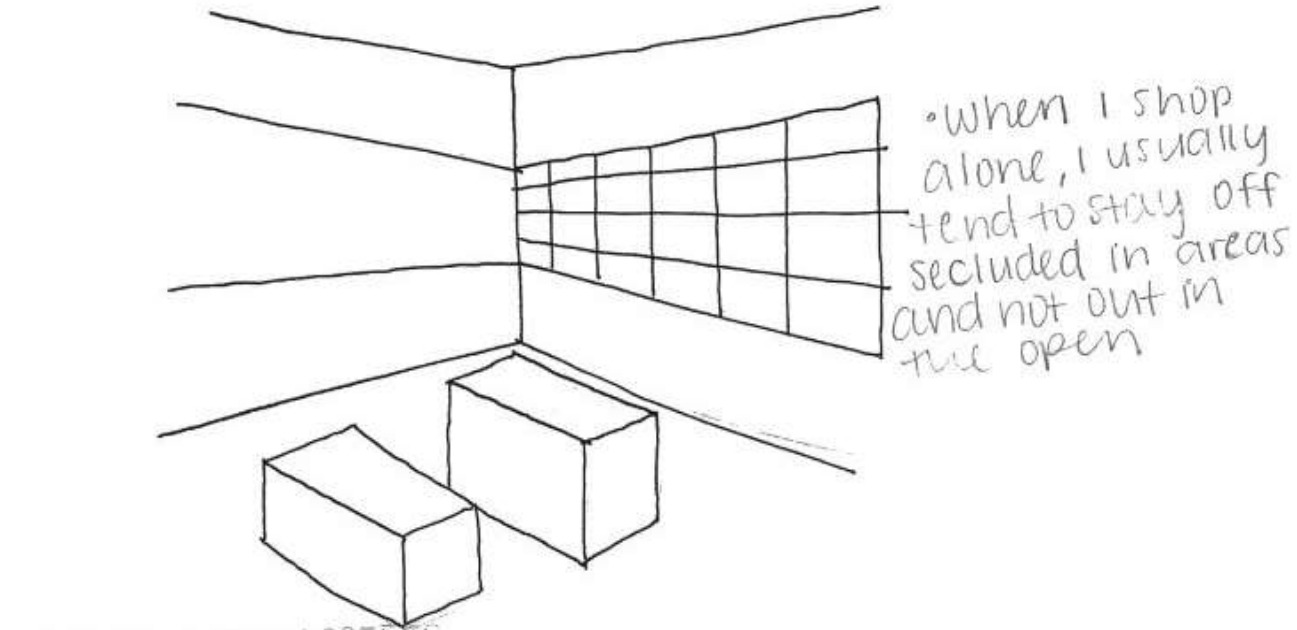


Madison Resavy

IDSN 2102 F19

Assignment 3A:

Activity Space Studies



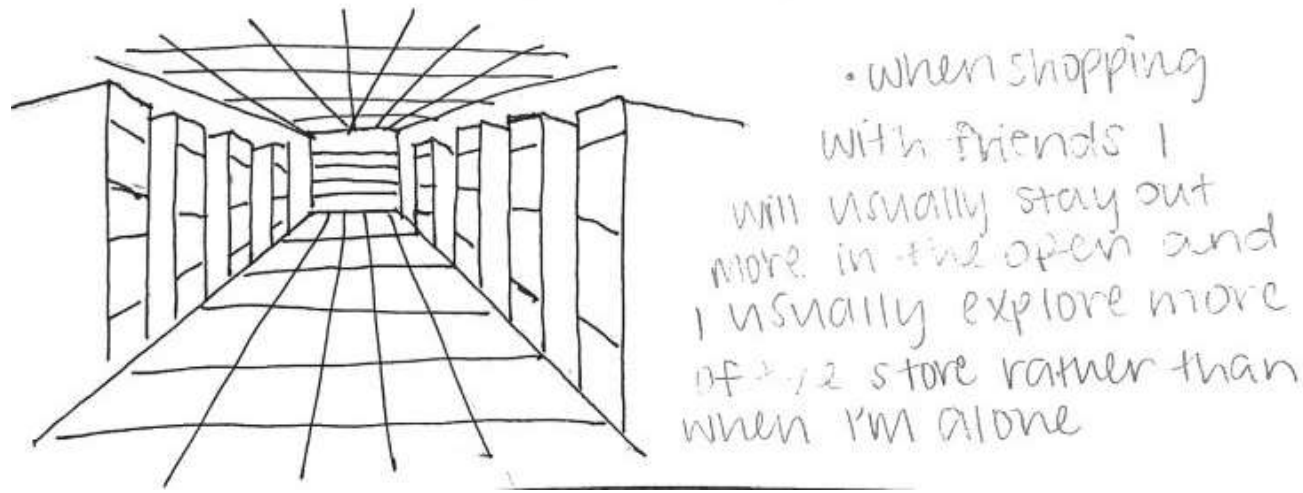
• When I shop alone, I usually tend to stay off secluded in areas and not out in the open

SHOPPING WITH COFFEE



• the only time I really shop with coffee is at target and I'll stop at Starbucks

SHOPPING WITH FRIENDS



• when shopping with friends I will usually stay out more in the open and I usually explore more of the store rather than when I'm alone

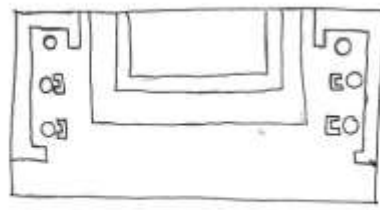
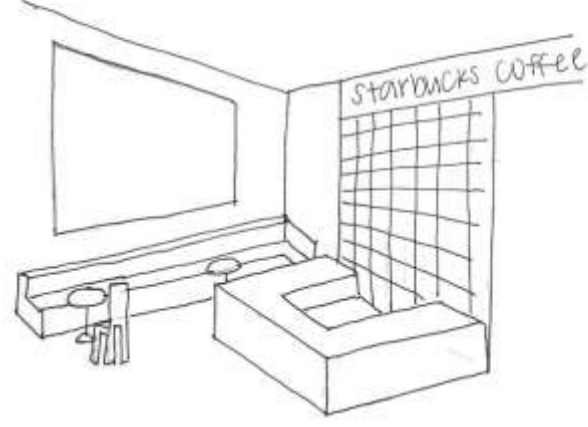


Madison Resavy

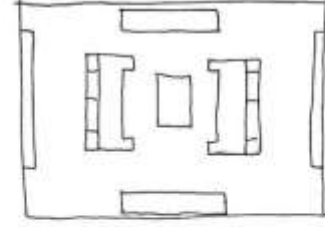
IDSN 2102 F19

Assignment 3B:

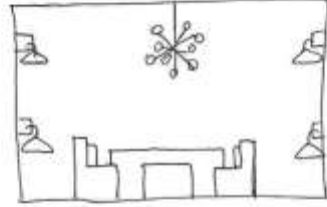
Activity Space Studies



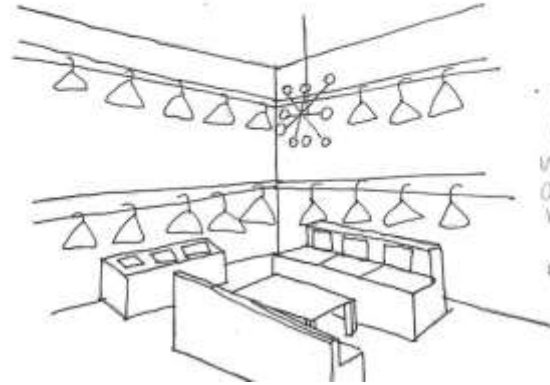
• have the option for more seating to allow for more people to stay & enjoy their coffee and to make the space more accessible



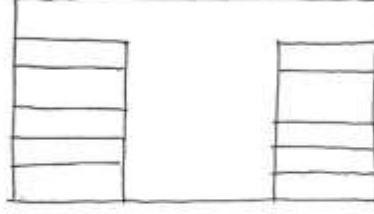
• adding seating would make me feel more welcome into the space & I would be more inclined to go in and see what's there



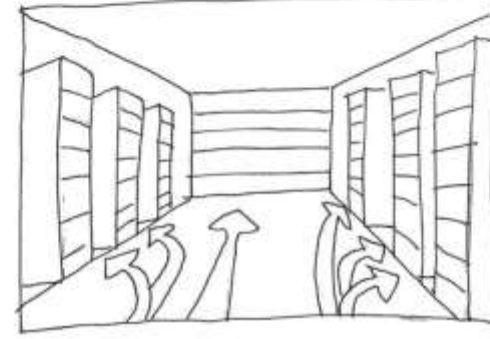
• having couches across from each other allows accessible conversation to start if there were someone else there



• including a table with accessories and clothes racks allows for movement around the entire space



• when I shop with friends I'll stay out more in the open rather than when I shop alone I stay out of the main path



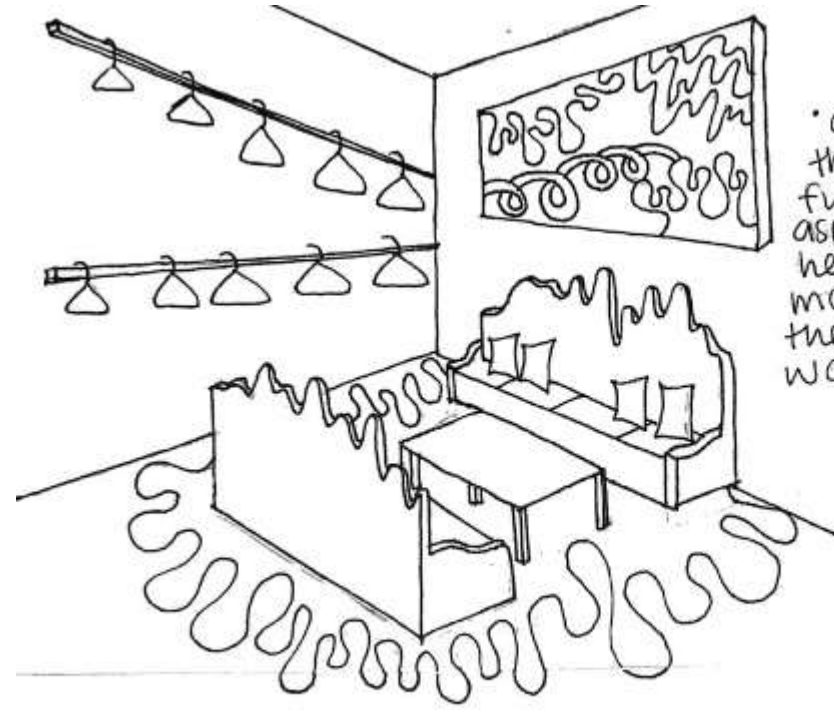
• however, I feel that providing a more visible ground to tell you which areas are what allows me to venture off and find my way back easily to my friends

Madison Resavy

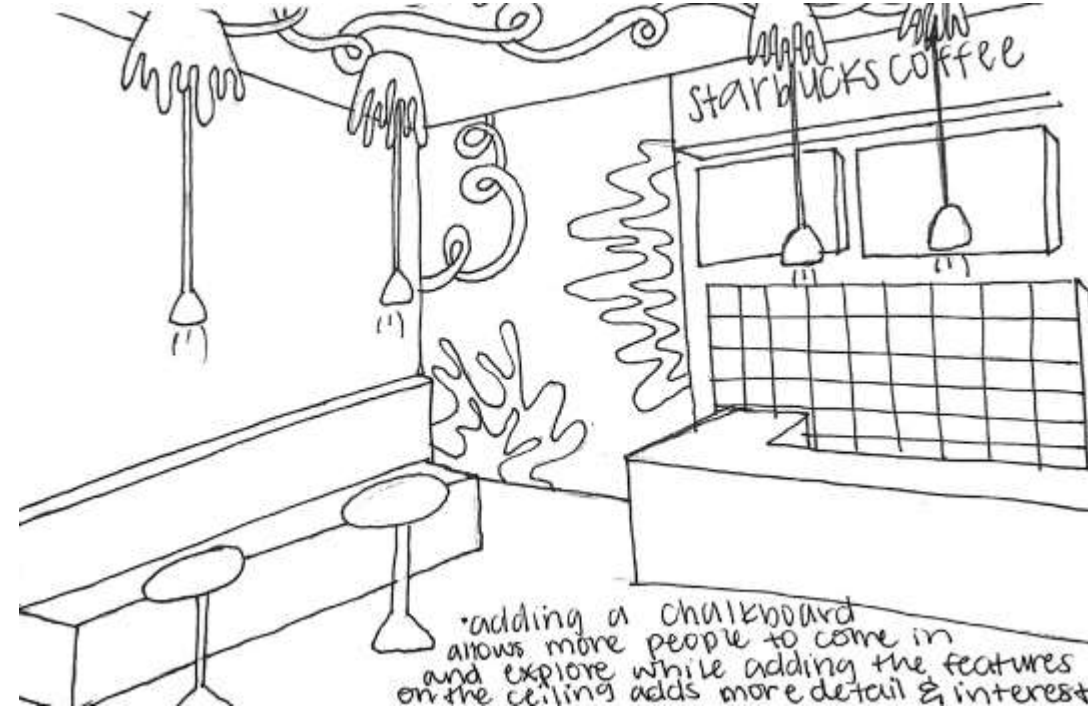
IDSN 2102 F19

Assignment 3C:

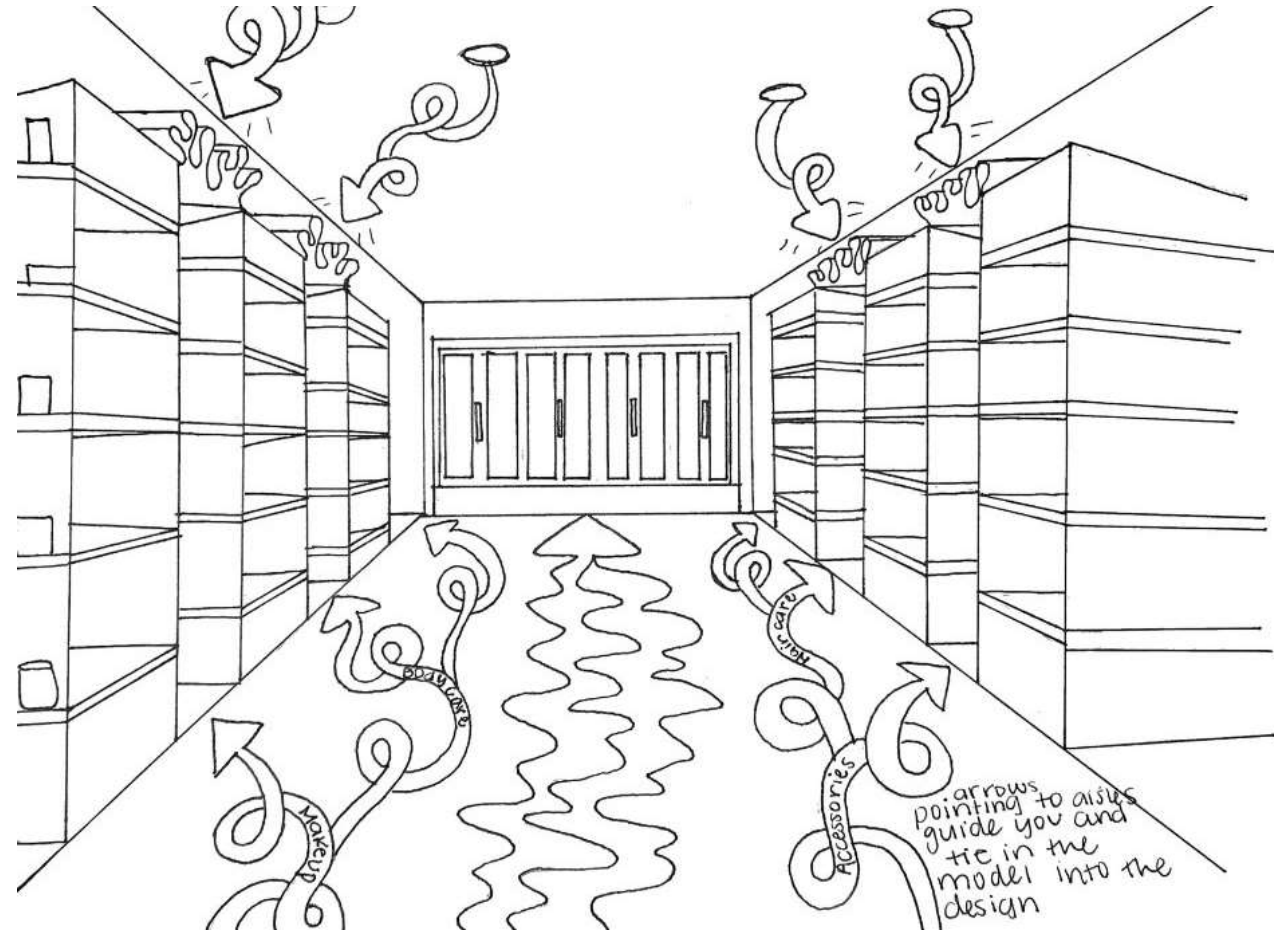
Activity Space Studies



• adding a couch that creates a fun and unique aspect to the room helps tie in the model as well as the painting on the wall



• adding a chalkboard allows more people to come in and explore while adding the features on the ceiling adds more detail & interest



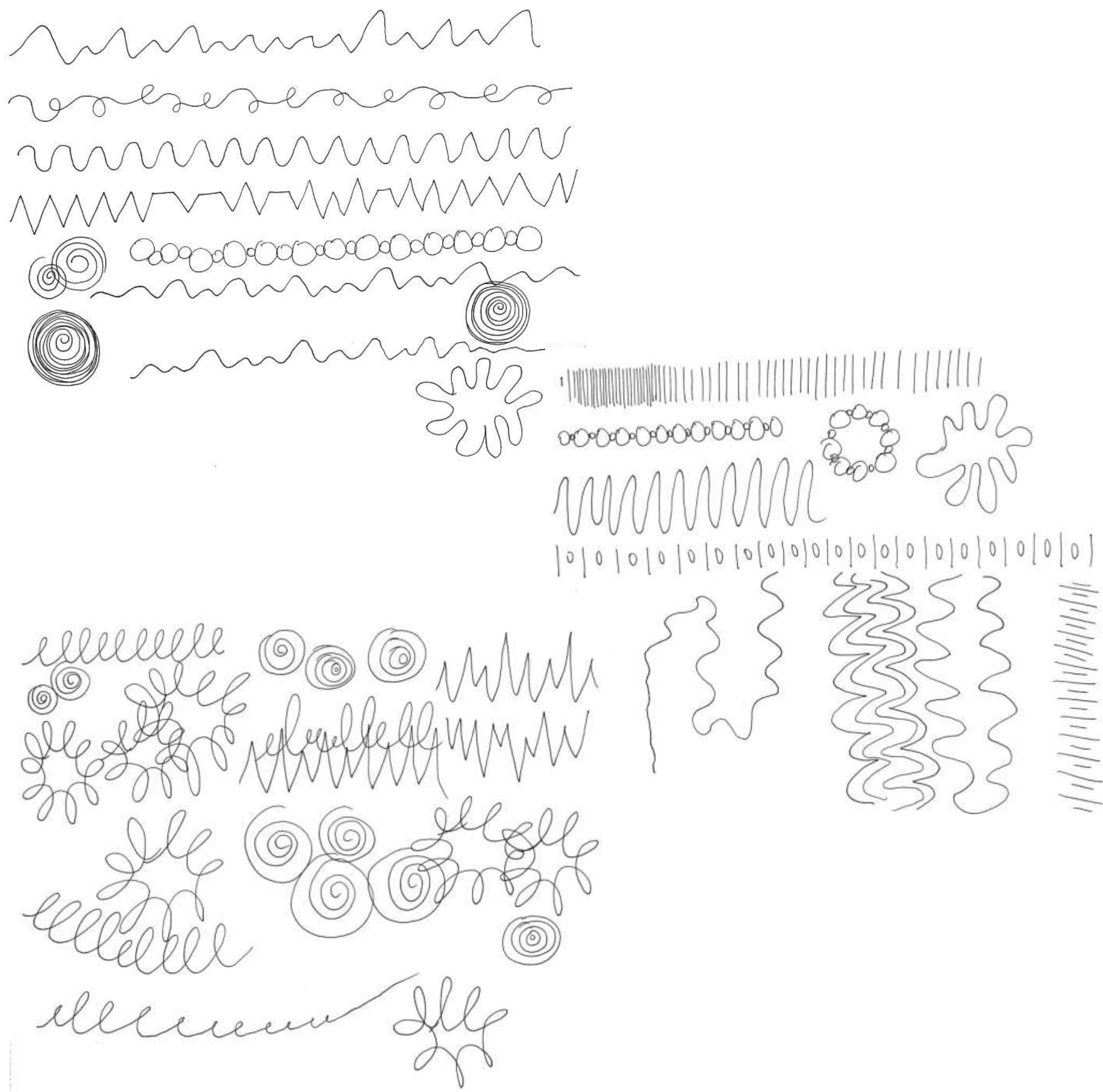
• arrows pointing to aisles guide you and tie in the model into the design

Madison Resavy

IDSN 2102 F19

Assignment 4A:

Drawing to music

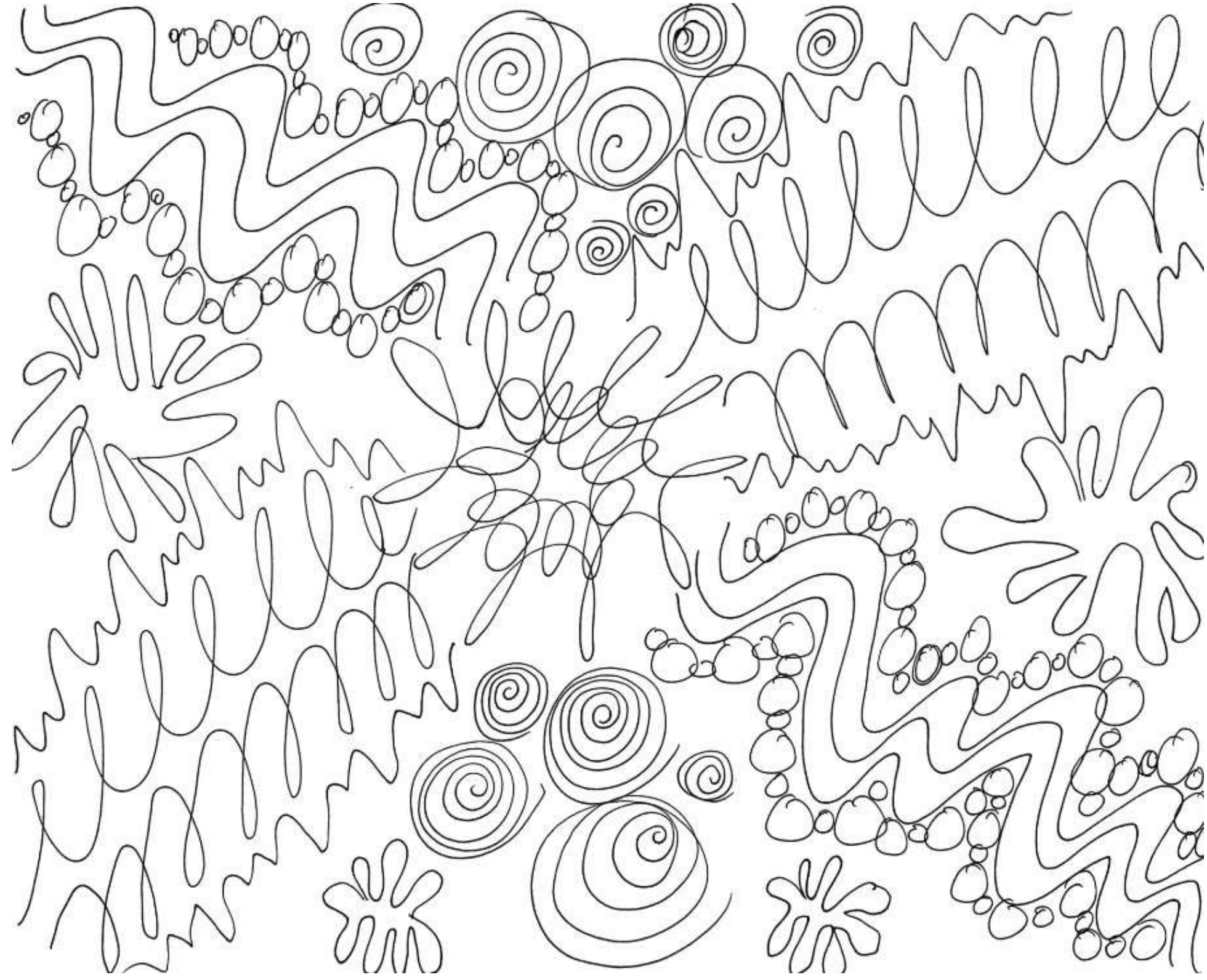


Madison Resavy

IDSN 2102 F19

Assignment 4B:

Drawing to music



Madison Resavy

IDSN 2102 F19

Assignment 5:

Modeling to music

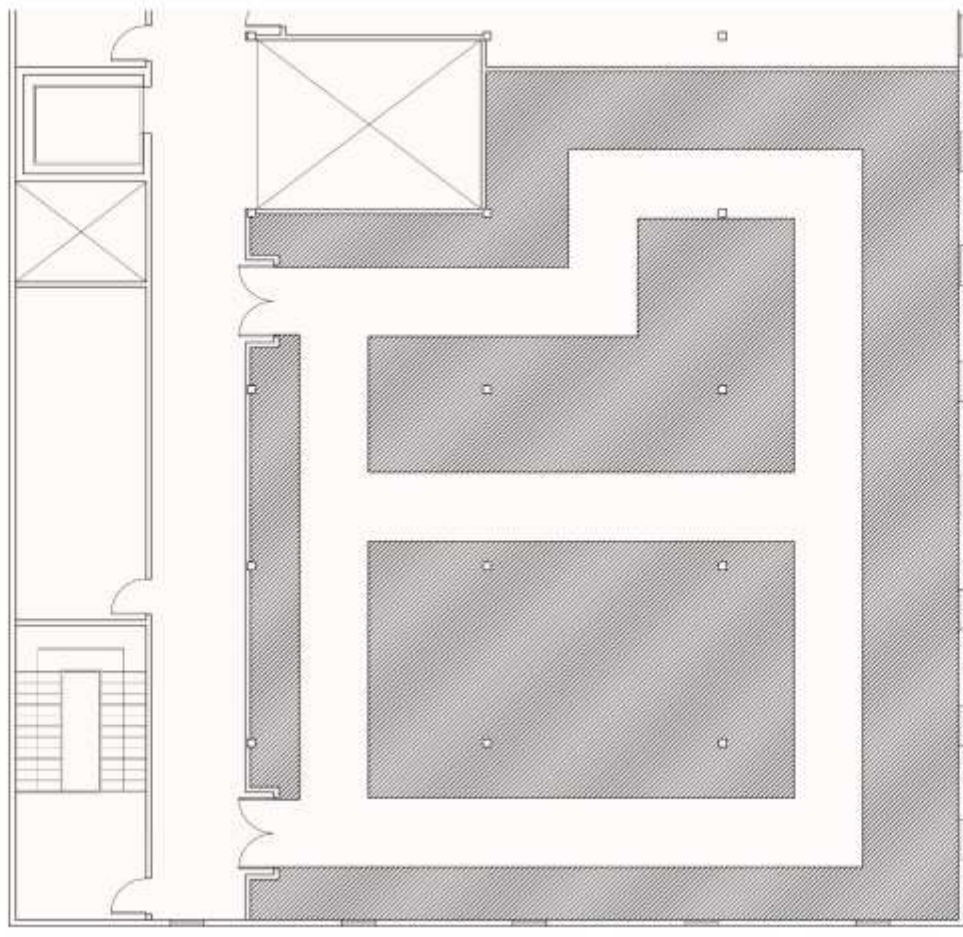
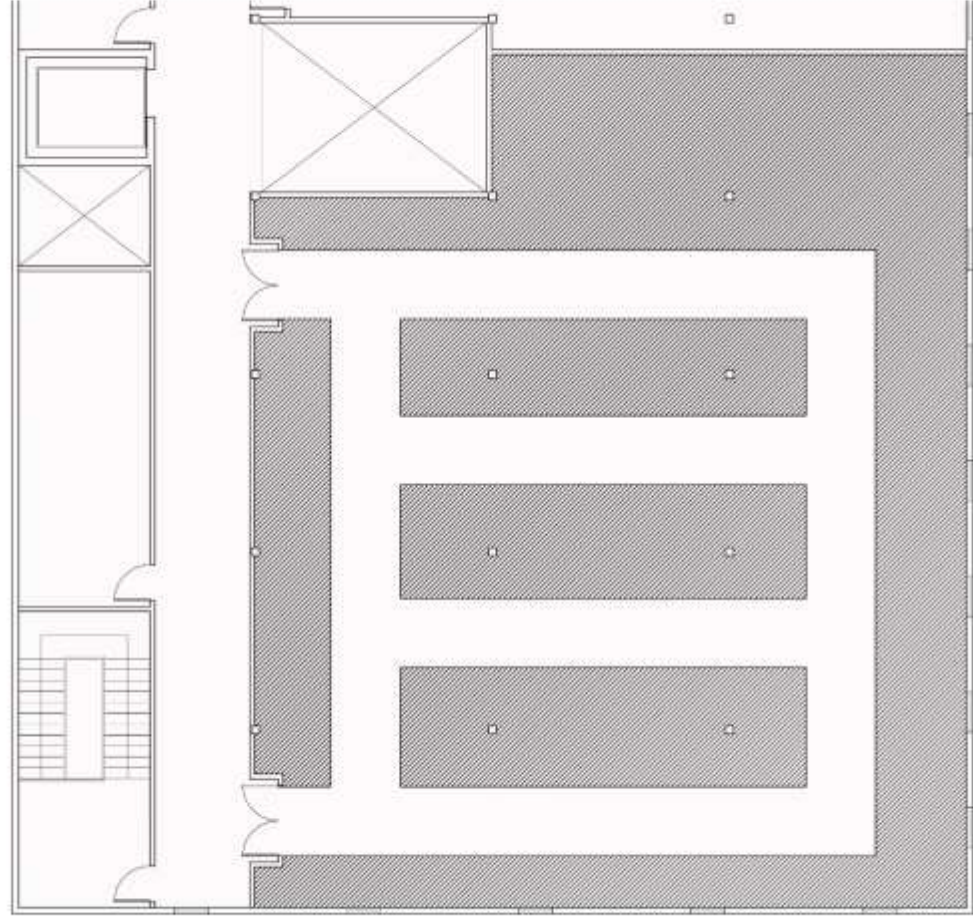


Madison Resavy

IDSN 2102 F19

Assignment 6:

AutoCAD-Circulation Plans



Madison Resavy

IDSN 2102 F19