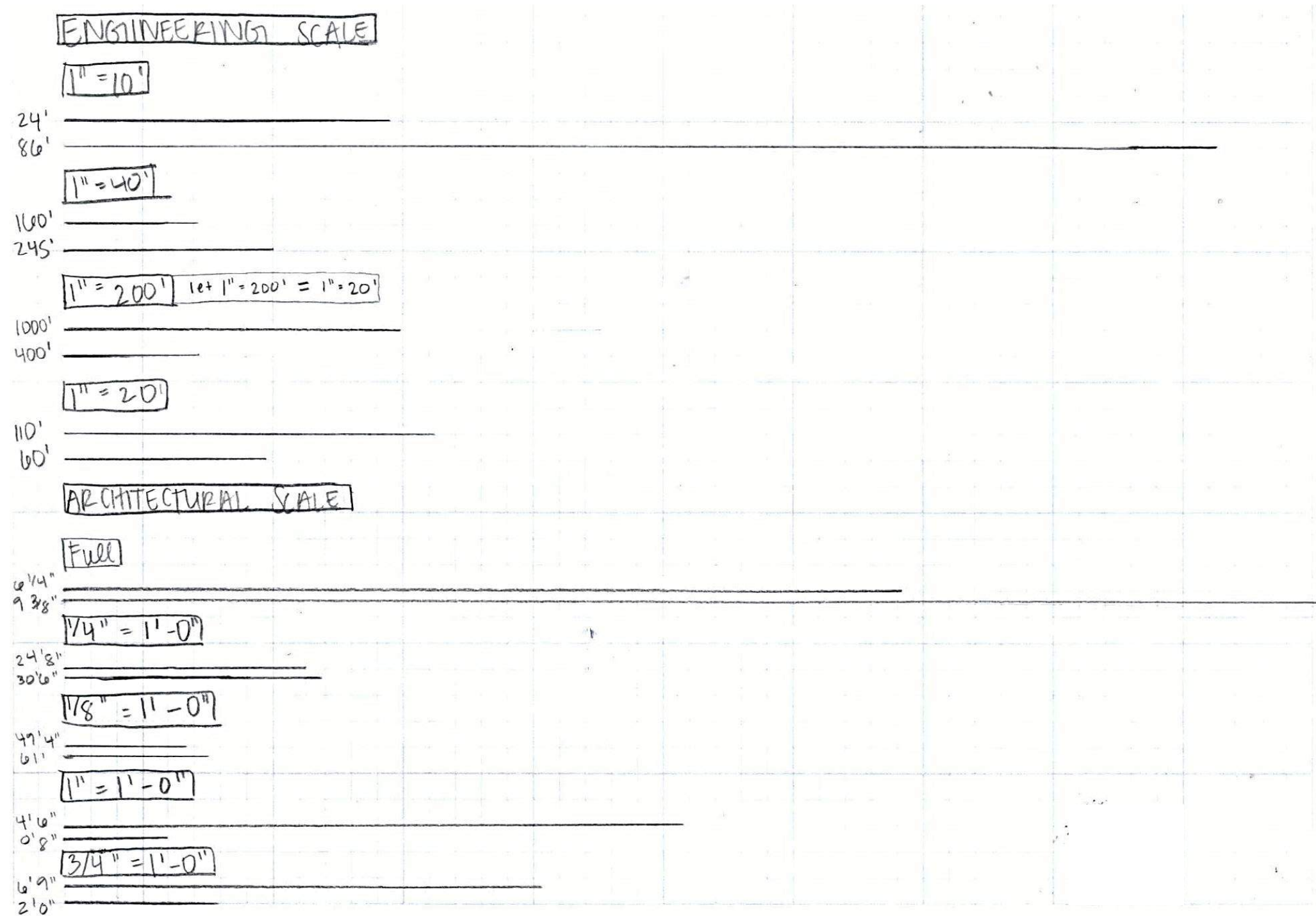


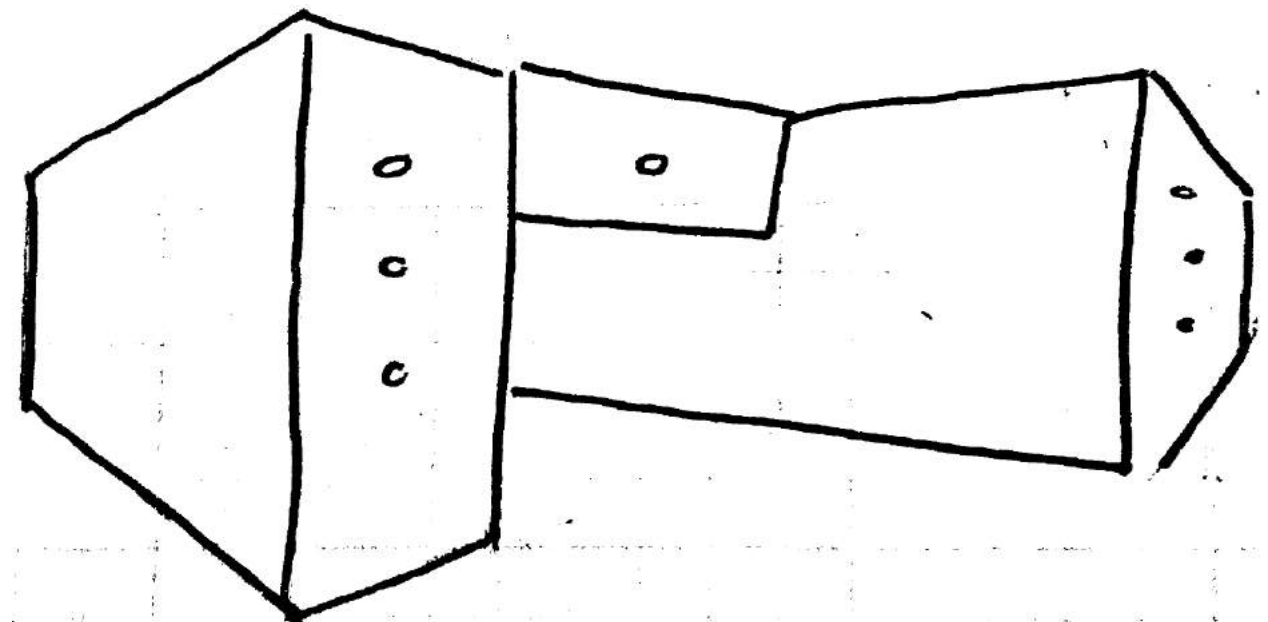
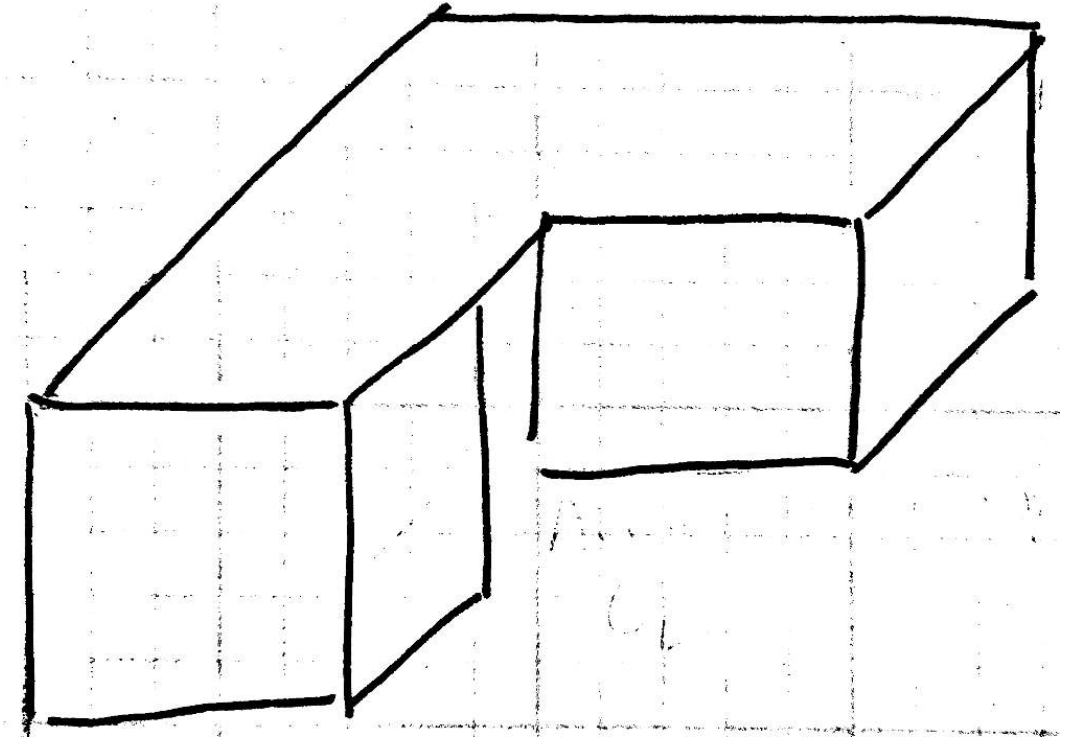
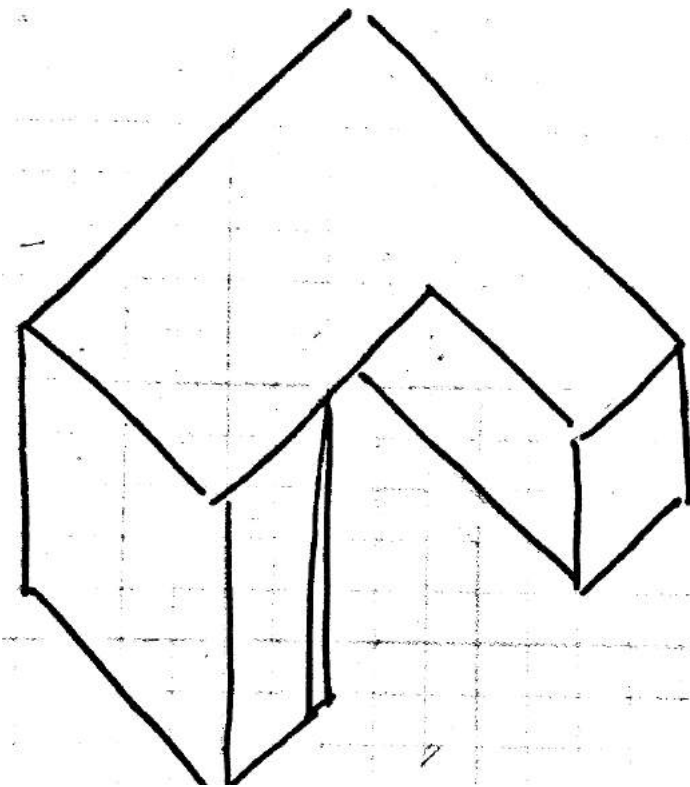
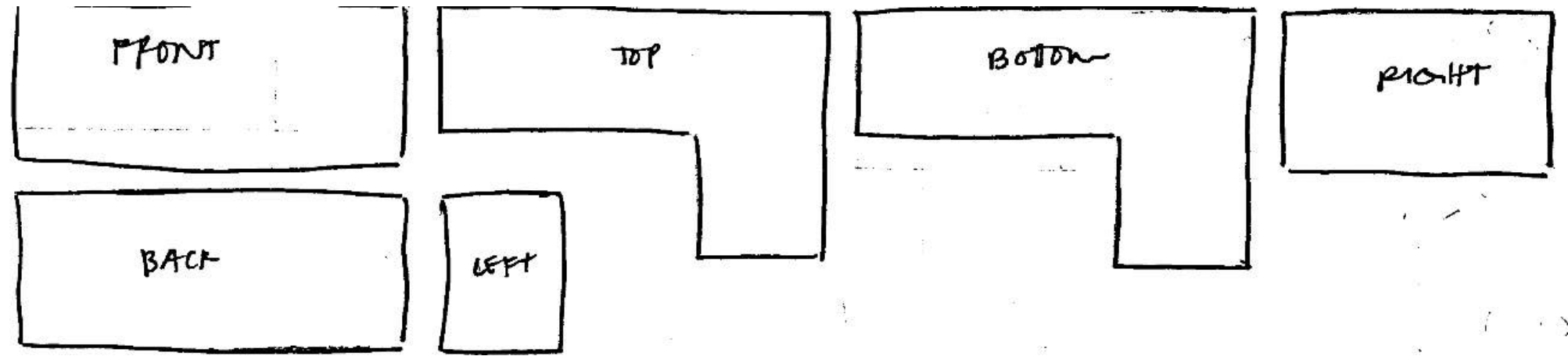
*IDSN 2101 F19:
Portfolio One
Elizabeth Mcleod*

Assignment 1: Based on measurements given different sizes of lines using engineering scales and architectural scales were drawn.



Elizabeth McLeod
IDSN 2102 F19

Assignment 2: An orthographic (top image), isometric (middle left), oblique (middle right), and perspective (bottom image) drawing of a rectilinear object was created. A desk was used as the object.



Elizabeth McLeod

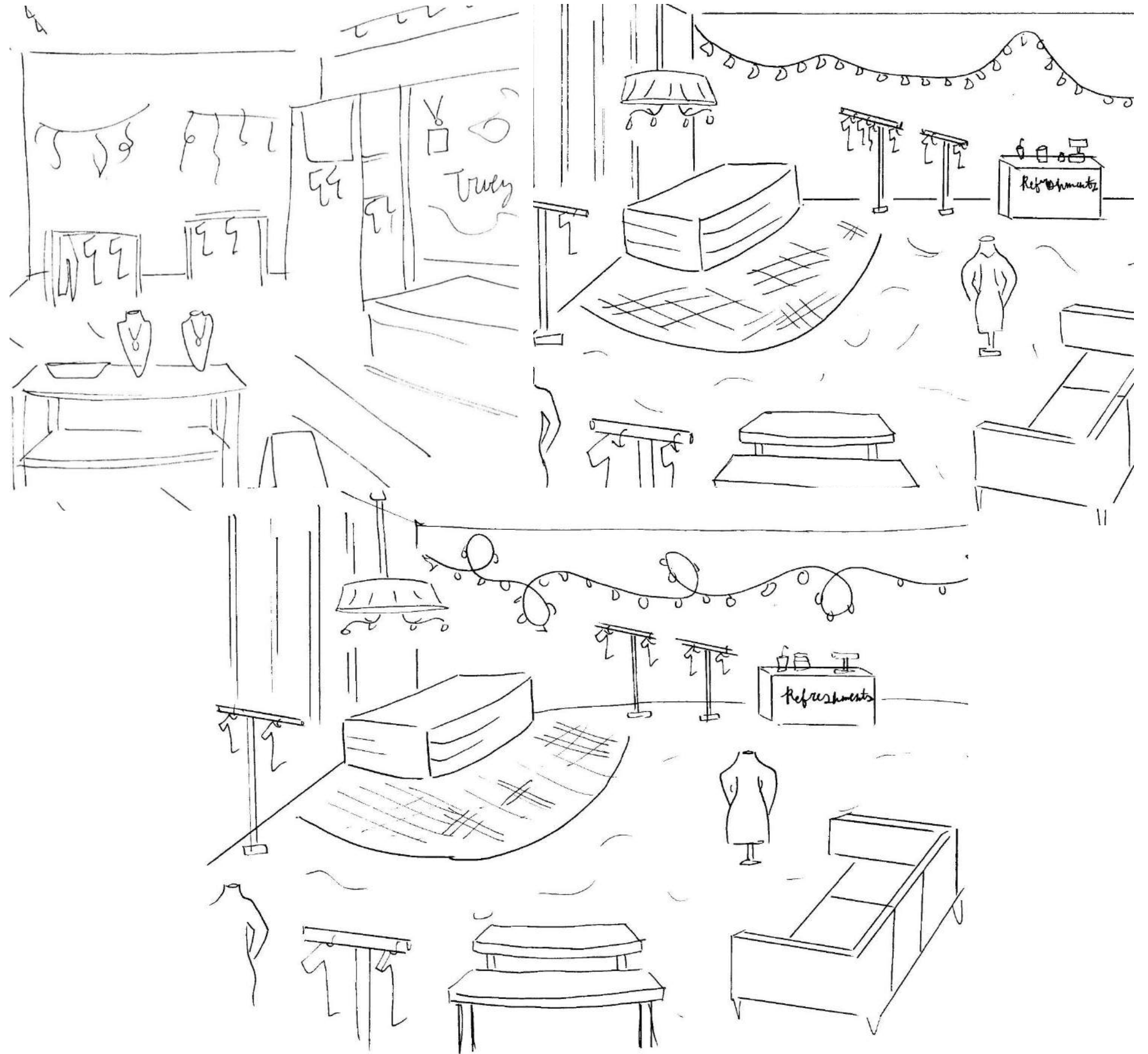
IDSN 2102 F19

Assignment 3: Within Part A of the assignment pictures were taken of three stores. One store was one in which one was comfortable in alone (Truly Yours, top left). One required a refreshment area inside (Target/Starbucks, middle right), and another was one in which one was comfortable shopping in with friends (Pacsun, bottom left).



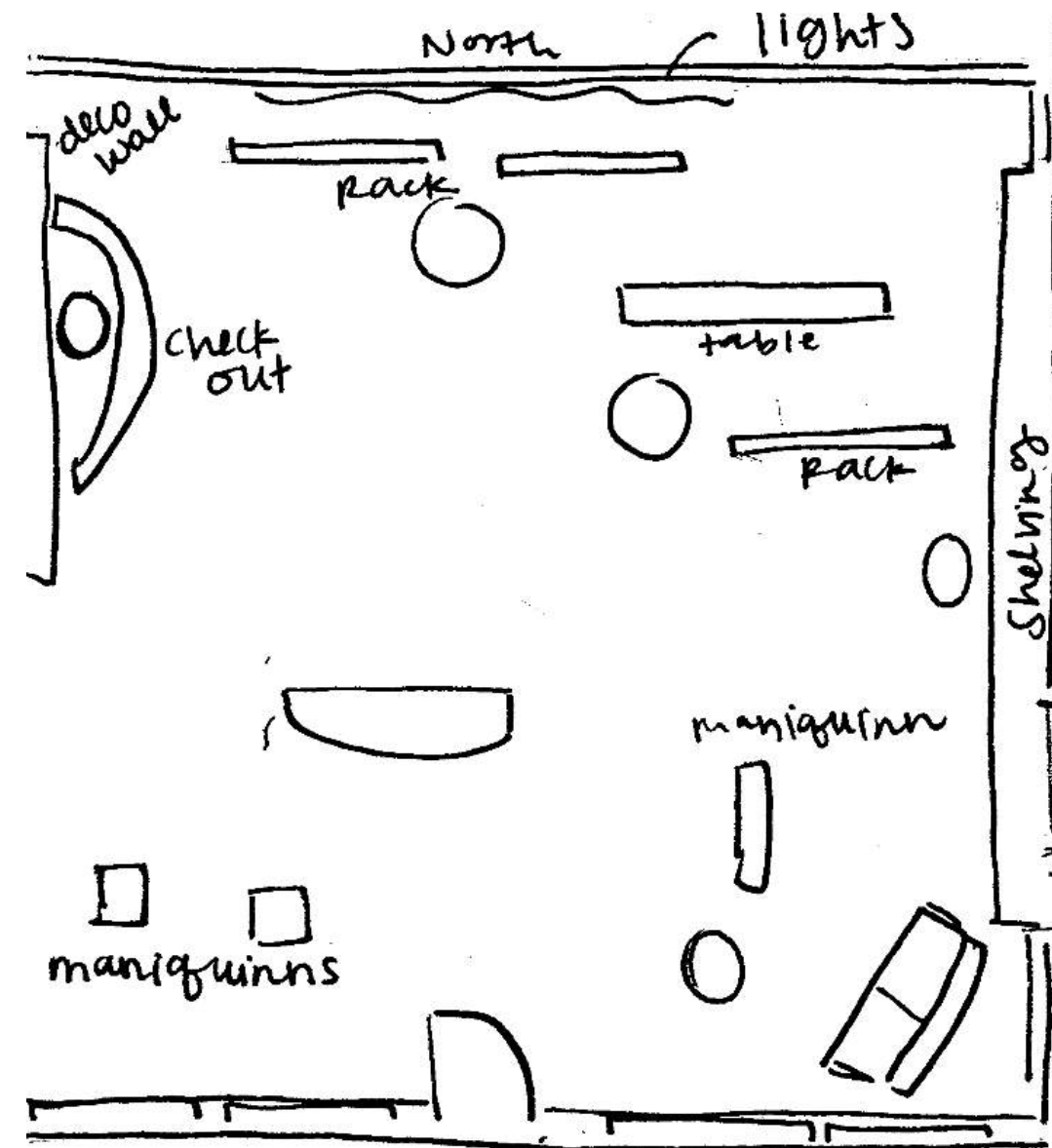
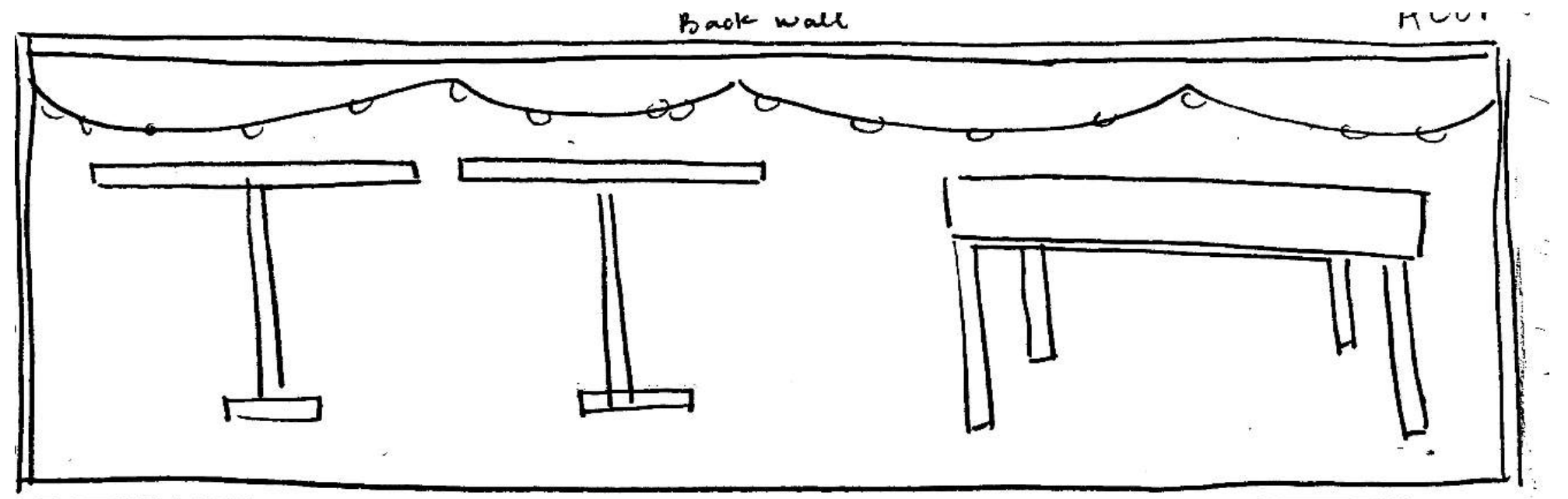
Elizabeth McLeod
IDSN 2102 F19

Assignment 3 (Continued): These are images of the location that one is comfortable shopping in alone, Truly Yours. The top left image is a depiction of the store as it was inside of the Greenville mall (3A). The top right image is a depiction of how the space would be altered (3B). The bottom image is how the music model (assignment 4) was incorporated into the altered version of the store (3C).



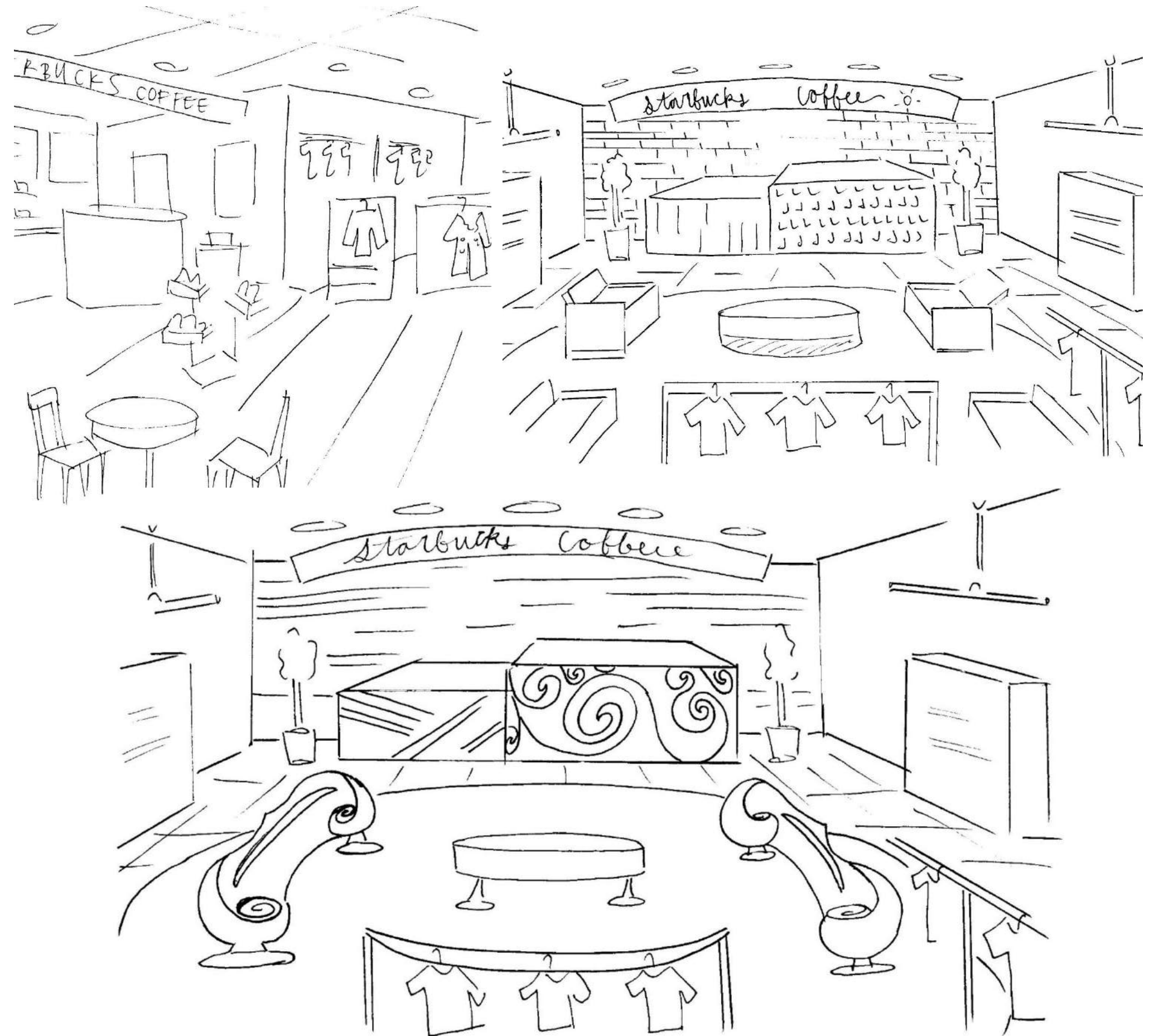
Elizabeth McLeod
IDSN 2102 F19

Assignment 3 (Continued): To the right are the section and floorplan drawings of Truly Yours (part of 3B).



Elizabeth McLeod
IDSN 2102 F19

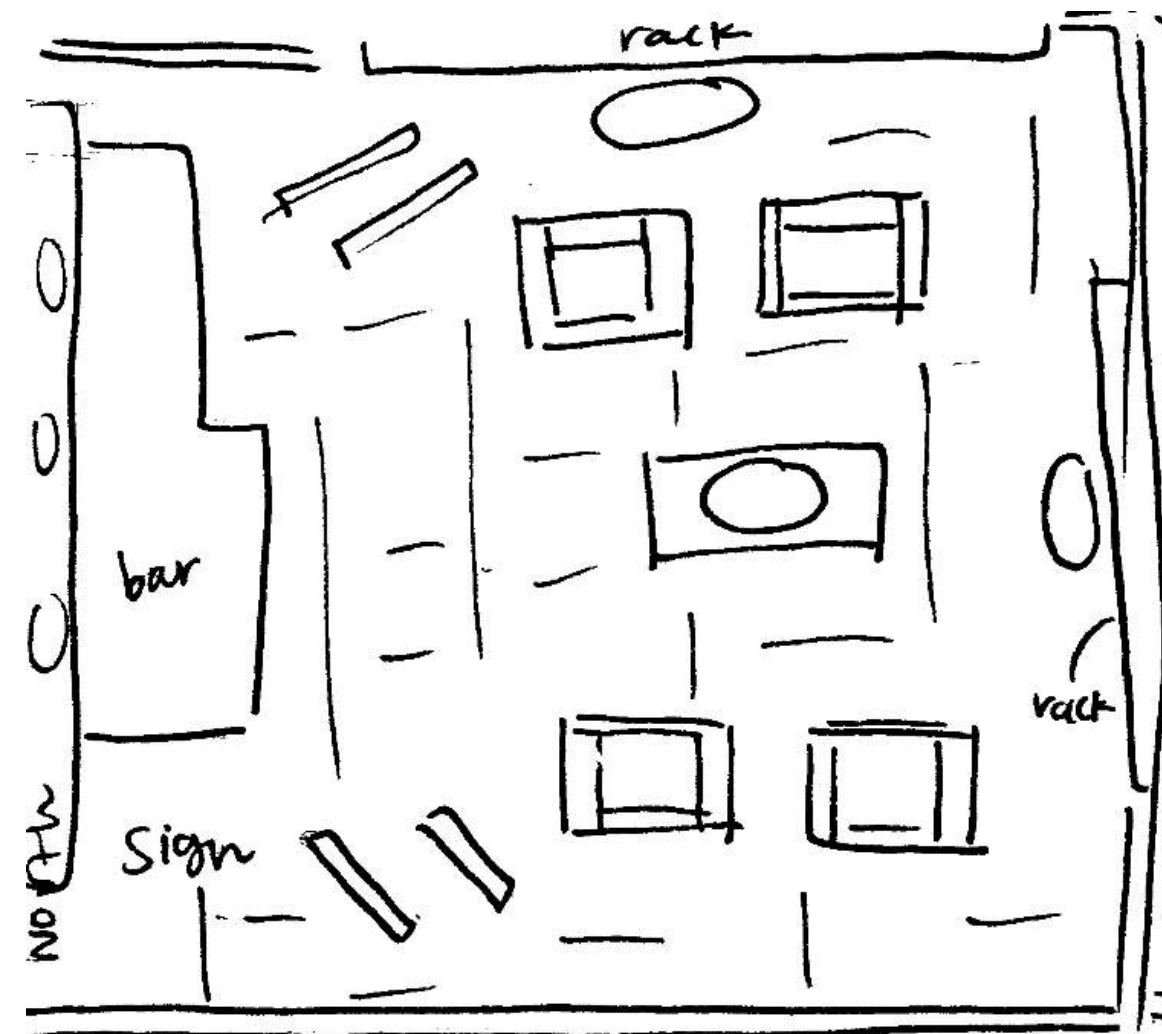
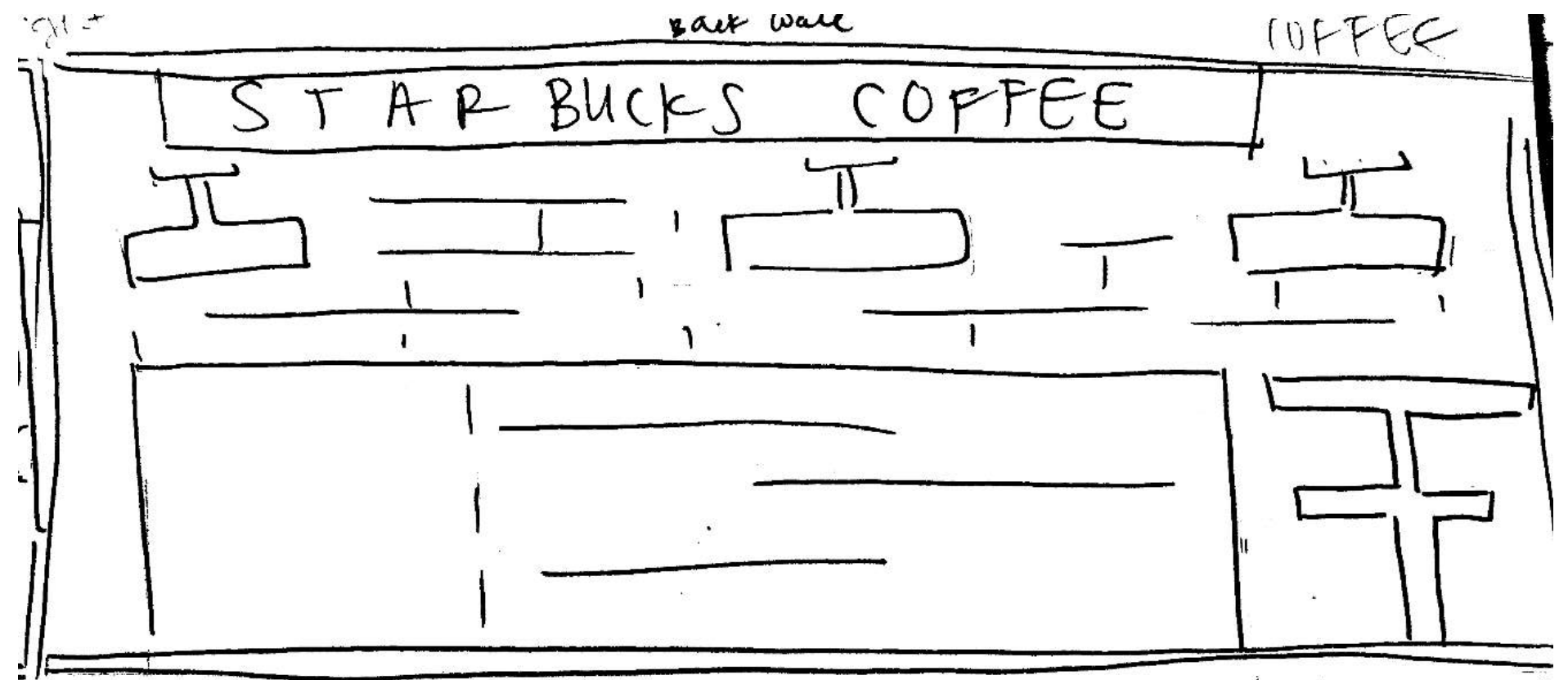
Assignment 3 (Continued): These are images of the location that has refreshments, Target/Starbucks. The top left image is a depiction of the store as it was (3A). The top right image is a depiction of how the space was changed (3B). The bottom image is how the music model was incorporated into the altered version of the store (3C).



Elizabeth McLeod

IDSN 2102 F19

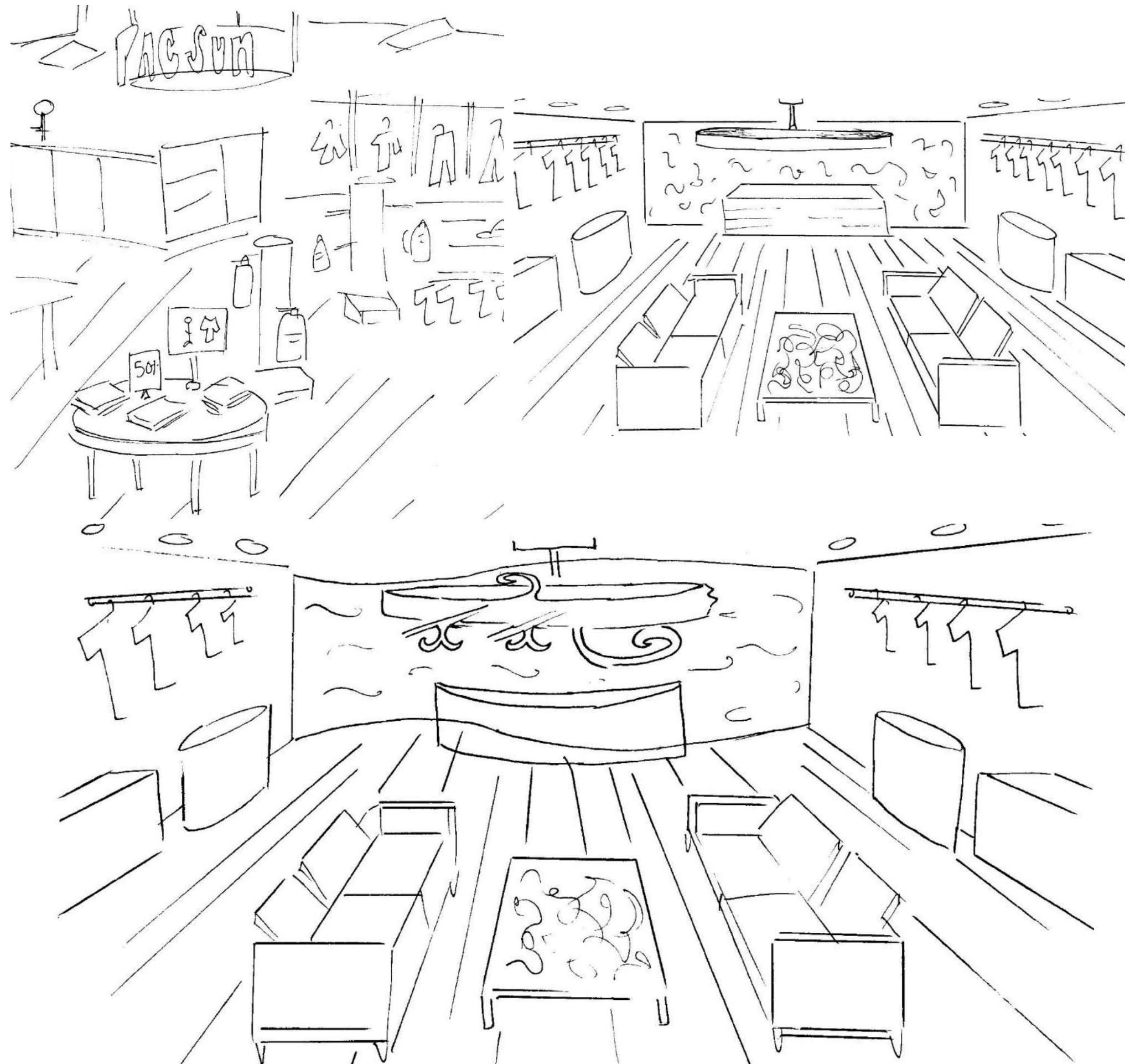
Assignment 3 (Continued): To the right are the section and floorplan drawings of Target/Starbucks (part of 3B).



Elizabeth McLeod

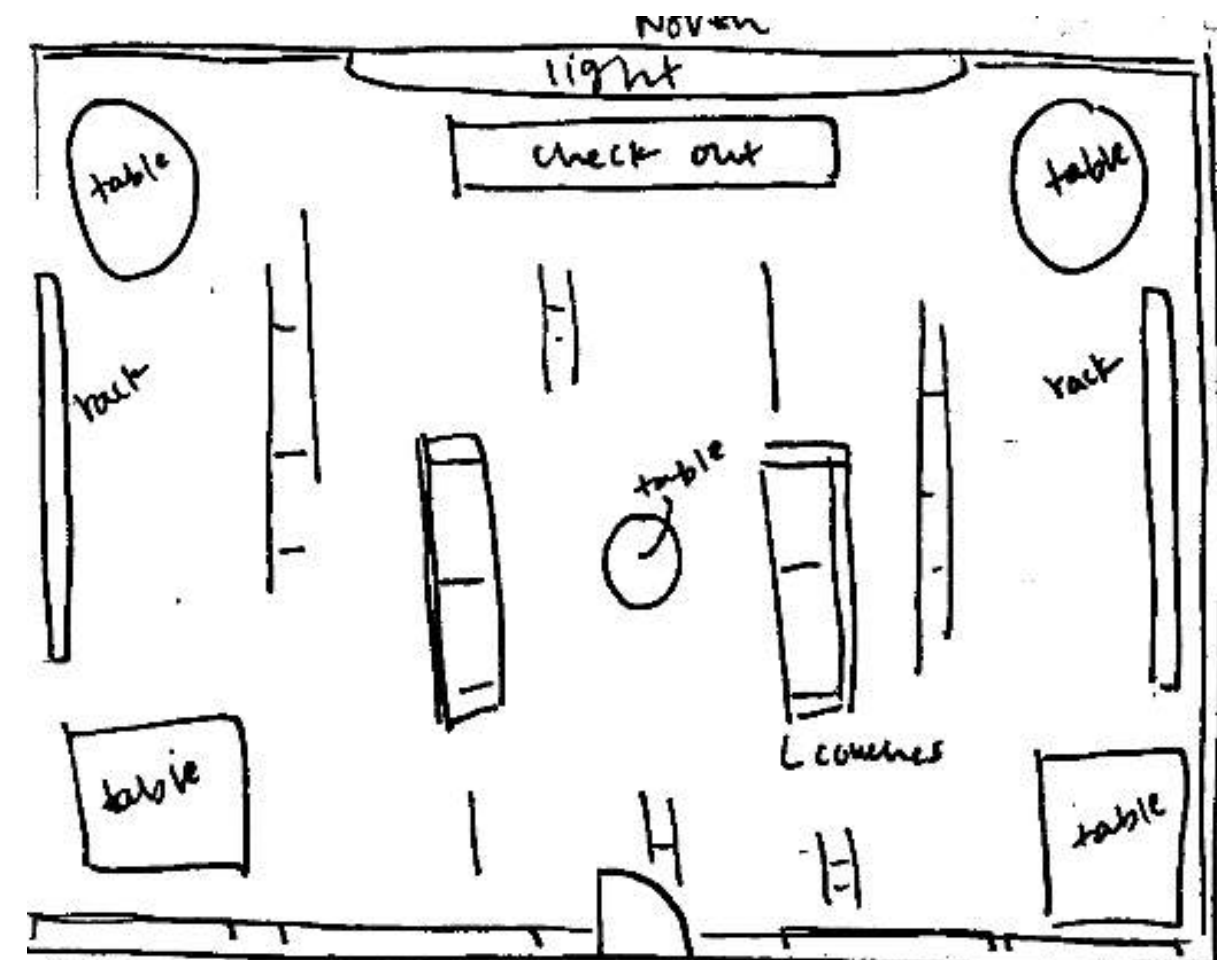
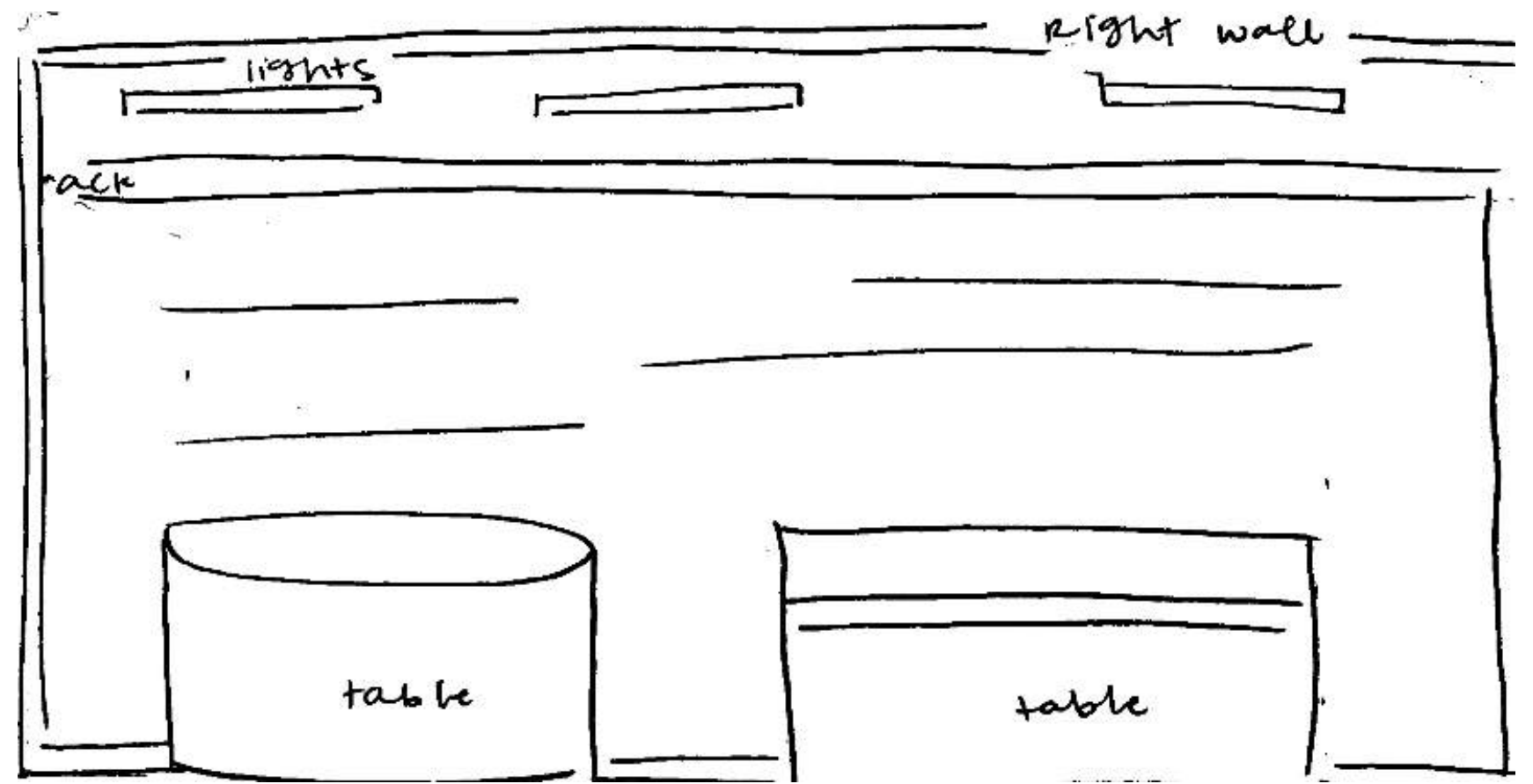
IDSN 2102 F19

Assignment 3 (Continued): These are images of the location that one is comfortable shopping in with friends, Pacsun. The top left image is a depiction of the store as it was inside the Greenville mall (3A). The top right image is a depiction of the altered space (3B). The bottom image is how the music model was incorporated into the altered version of the store (3C).



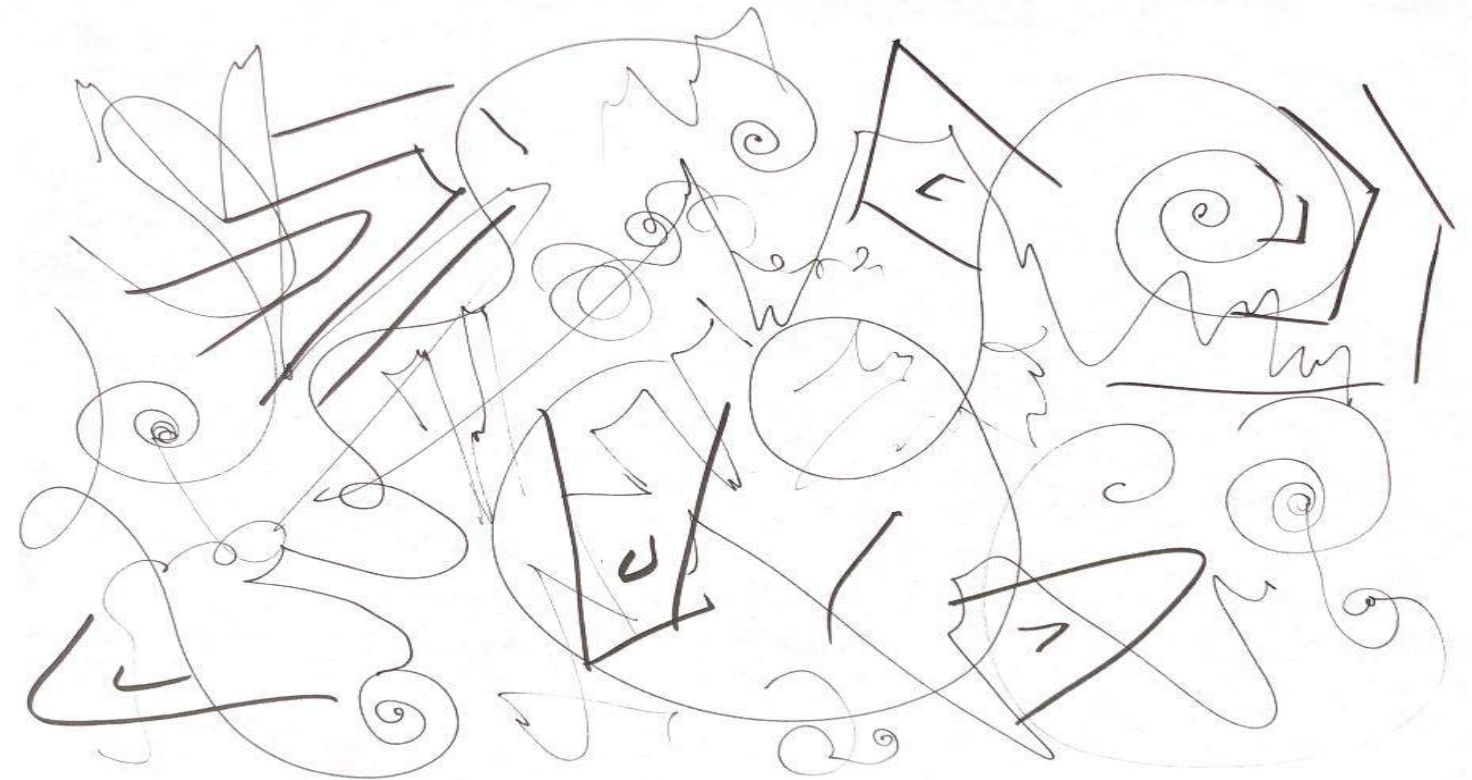
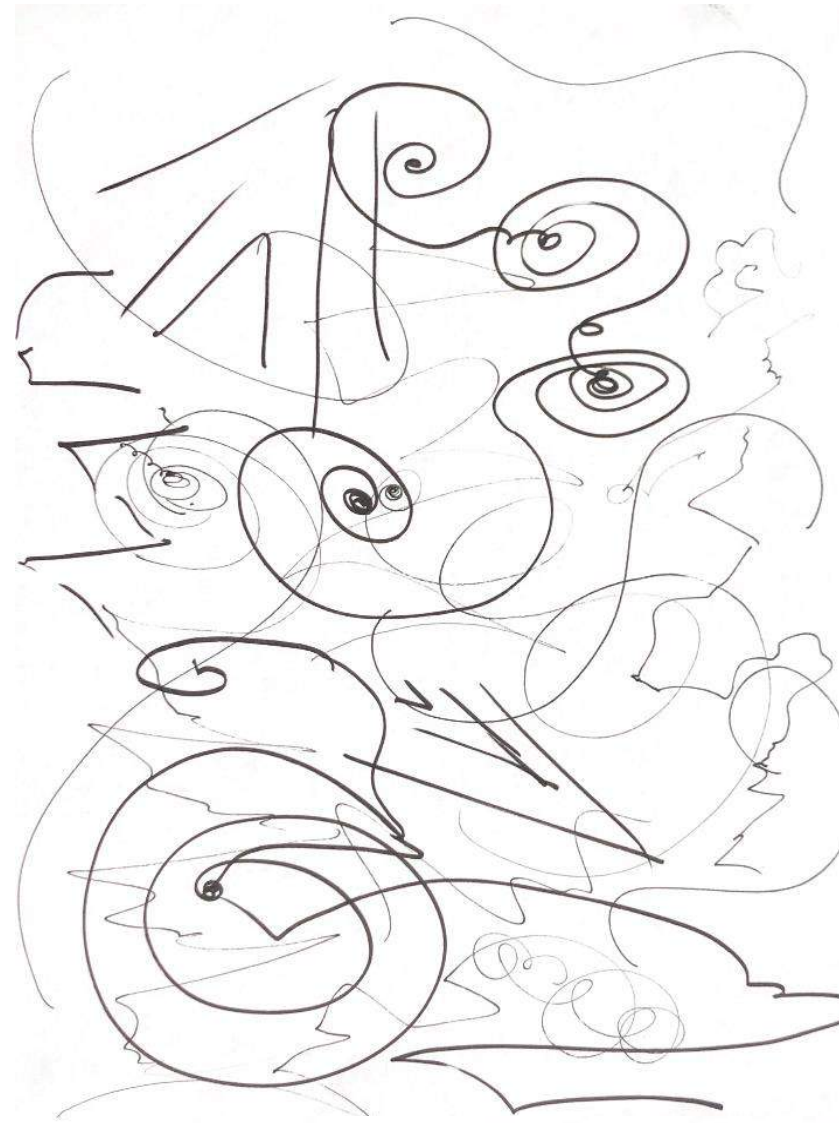
Elizabeth McLeod
IDSN 2102 F19

Assignment 3 (Continued): To the right are the section and floorplan drawings for Pacsun (part of 3B).



Elizabeth McLeod
IDSN 2102 F19

Assignment 4: A piece of music was listened to and abstract drawings were created to represent the music that was heard. Elements and Principles of not only Design but also that of music were kept in mind.



Elizabeth McLeod

IDSN 2102 F19

Assignment 4B: Utilizing the three previous abstract drawings a fourth piece using different elements and patterns from all of these drawings was created.

Elizabeth McLeod

IDSN 2102 F19



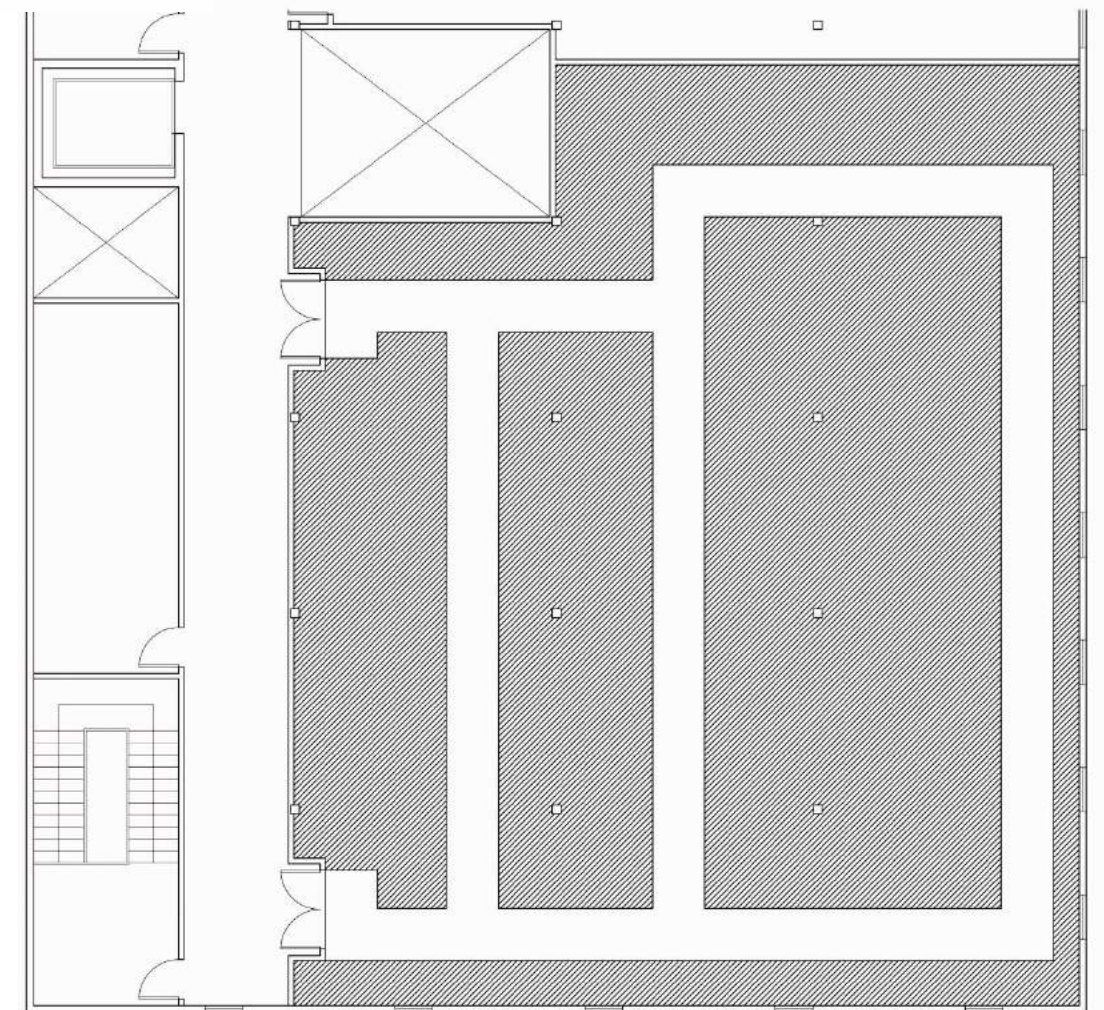
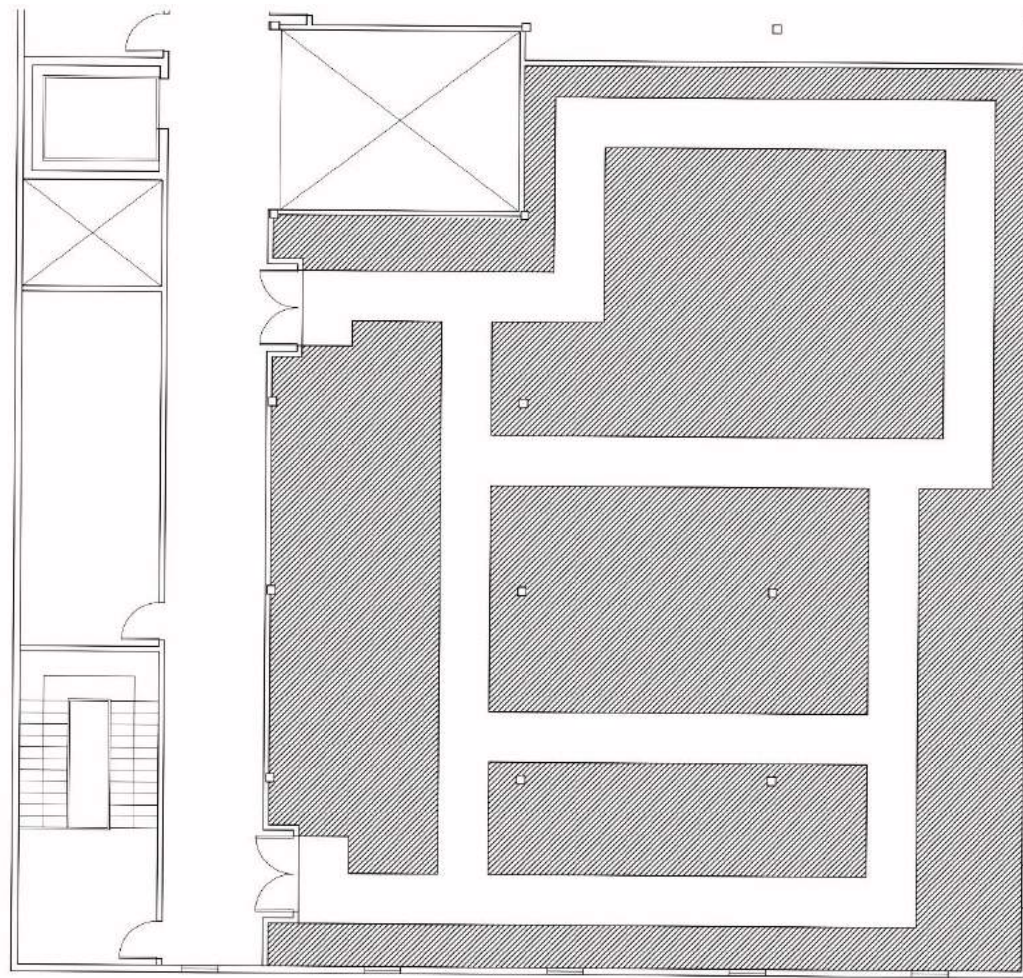
Assignment 5: Utilizing Elements and Principles of 3-D Design a 3-D model based on the fourth and final abstract drawing based off the piece of music was created.

Elizabeth McLeod

IDSN 2102 F19



Assignment 6: Using AutoCAD circulation plans of the Hughes Tobacco Warehouse were created in order to show the wayfinding routes in which customers will use once transformed into a shopping/display area.



Elizabeth McLeod

IDSN 2102 F19