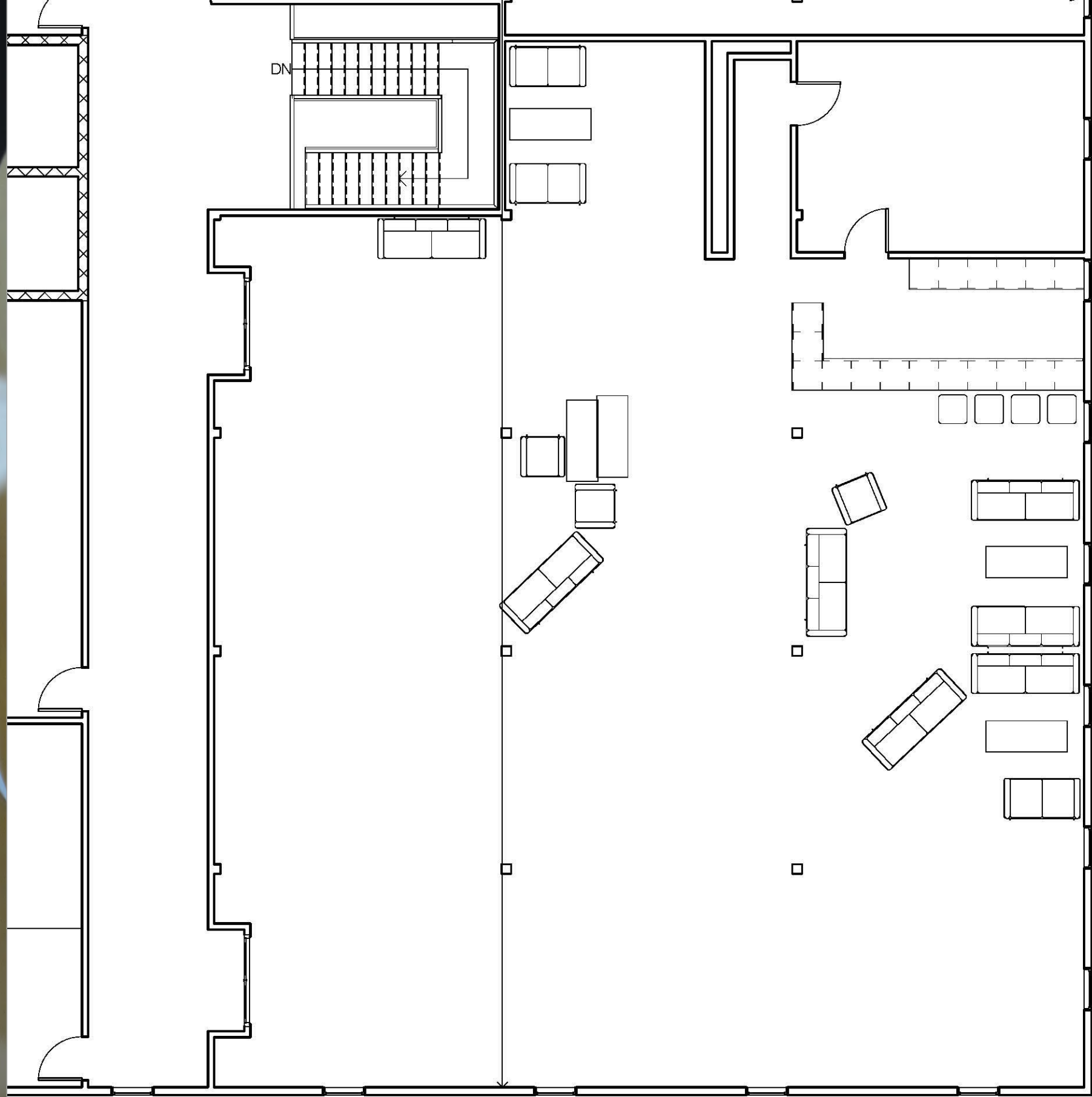
The left side of the page features several decorative paper cutouts. At the top, there are dark green, scalloped-edged shapes. Below these are lighter green, more intricate cutouts that resemble leaves or fern fronds. A white, curved strip, possibly representing a stem or branch, weaves through the green elements. The background of the entire page is a light, neutral color with a subtle gradient.

Julia Quayle
Portfolio 4
IDSN 2102 F19

ASSIGNMENT 18

Revit final
furniture plan.



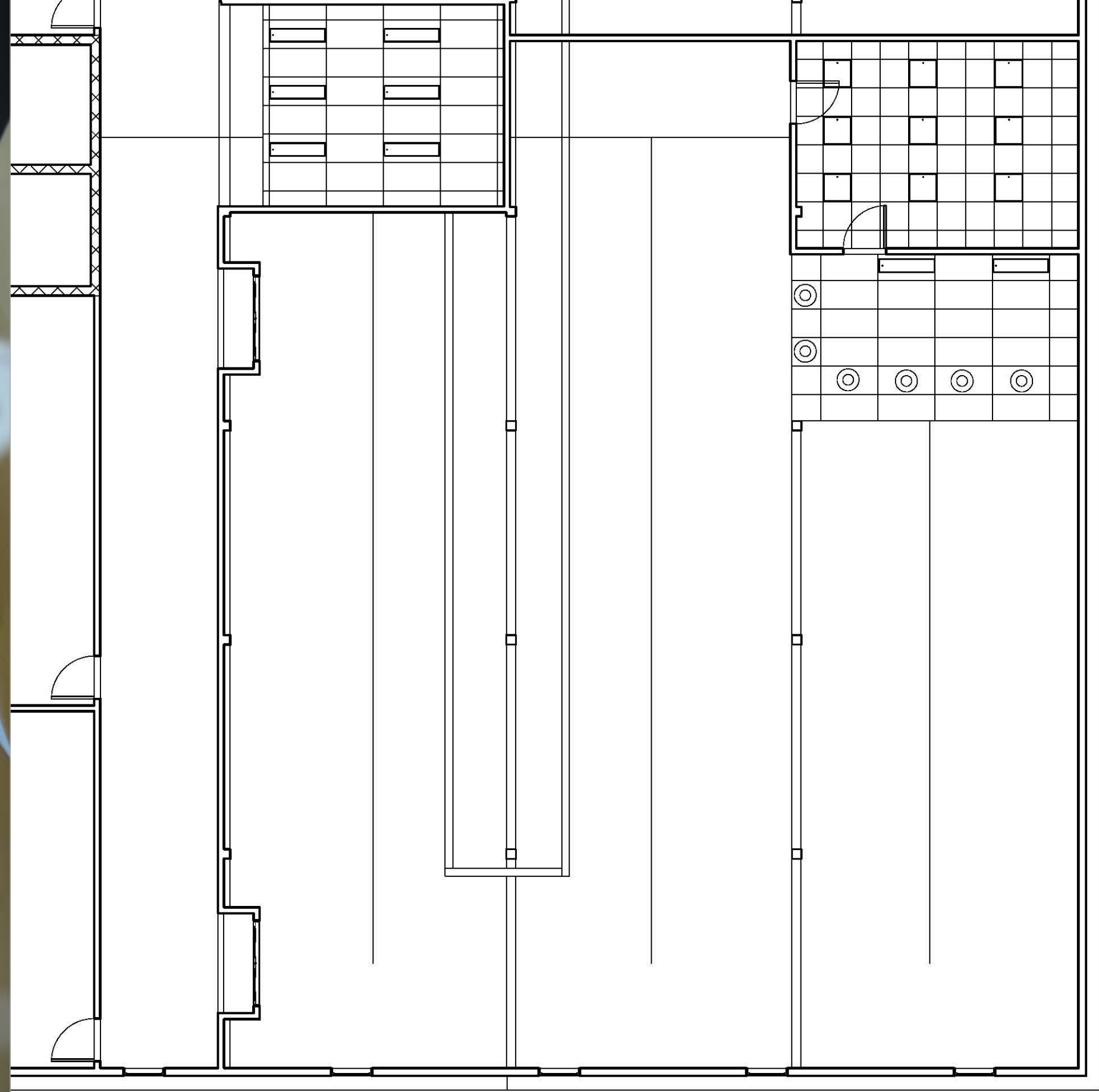
① Level 2
1/8" = 1'-0"

Julia Quayle

IDSN 2102 F19

ASSIGNMENT 19

Revit reflected ceiling plan.



① Level 2
1/8" = 1'-0"

Julia Quayle

IDSN 2102 F19

ASSIGNMENT 20

Rendered view
in Revit.



Julia Quayle

IDSN 2102 F19