

Portfolio 1

IDSN 2102

Fall 2020

Isabel Faria

Assignment 1: Research

- Building built in 1900's
- On National Register of Historic Places
- Focus: Attracting, training and retaining skilled workers
- Mission is to serve the region by enhancing economic development and creating new jobs
- Where people exchange ideas, have fun and rebuild relationships
- "Living room" of society
- Neutral grounds
- Few blocks from ECU Campus
- Must benefit ECU and Community
- Intimate seating spaces for privacy
- Display cases



Assignment 2: Program/ Problem Statement

User Profile:

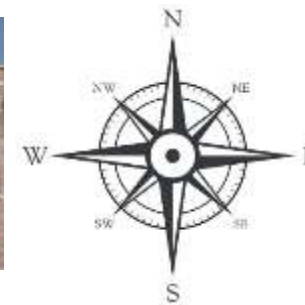
- Who will be using the space?
 - College Graduates
 - Educators
 - Researchers
 - Future Interns
 - Welcoming to everyone
 - Businessmen and women
 - Workers
 - Students
 - Greenville, NC community



Assignment 2: Program/ Problem Statement

Site Profile:

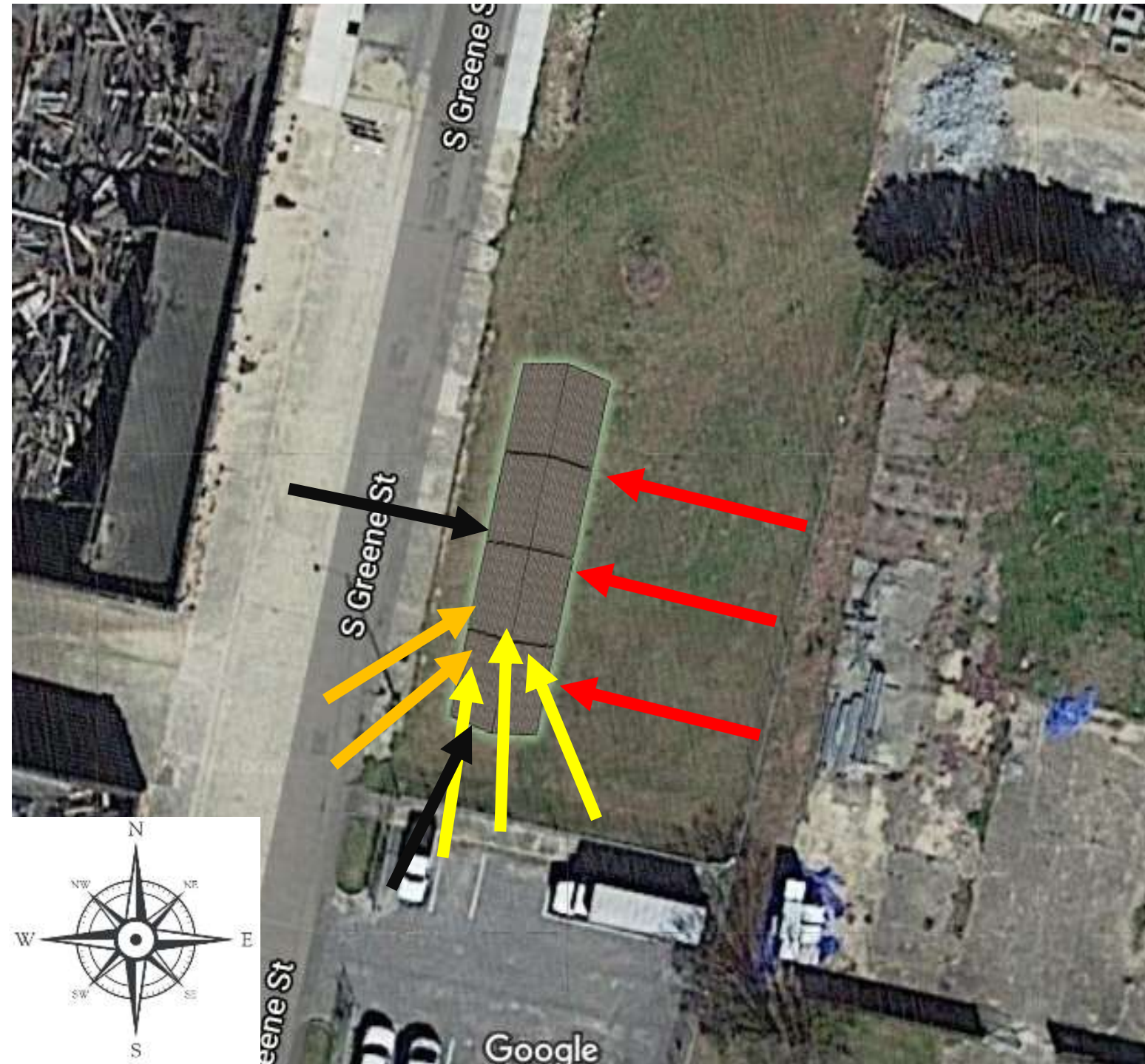
- Corner of **West 10th St.** and **South Green St.**



Assignment 2: Program/ Problem Statement

Site Analysis:

- ↑ Entrances
- ↑ Morning Light
- ↑ Day Light
- ↑ Evening Light



Assignment 2: Program/ Problem Statement

Design Problem Statement:

- **Site:**

- There are not many other businesses surrounding
- All surrounding buildings are empty



- **Daylighting:**

- Not many windows
- No windows on back
- Windows are only on top floor
- Windows are small
- Not a lot of natural light
- How to light the area without the florescent feel



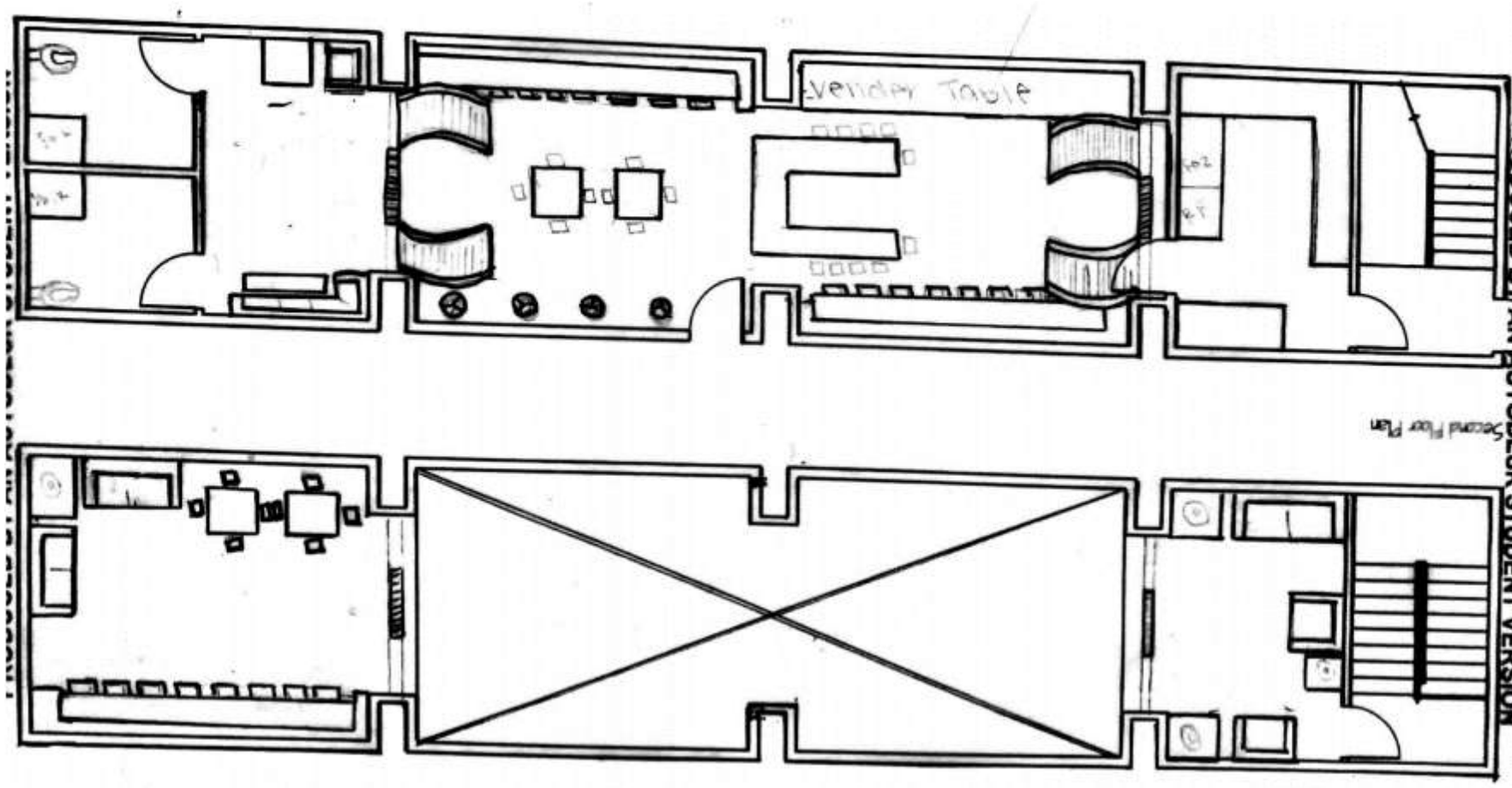
- **Wayfinding**

- All in a row
- Small nooks
- Moving around in the space

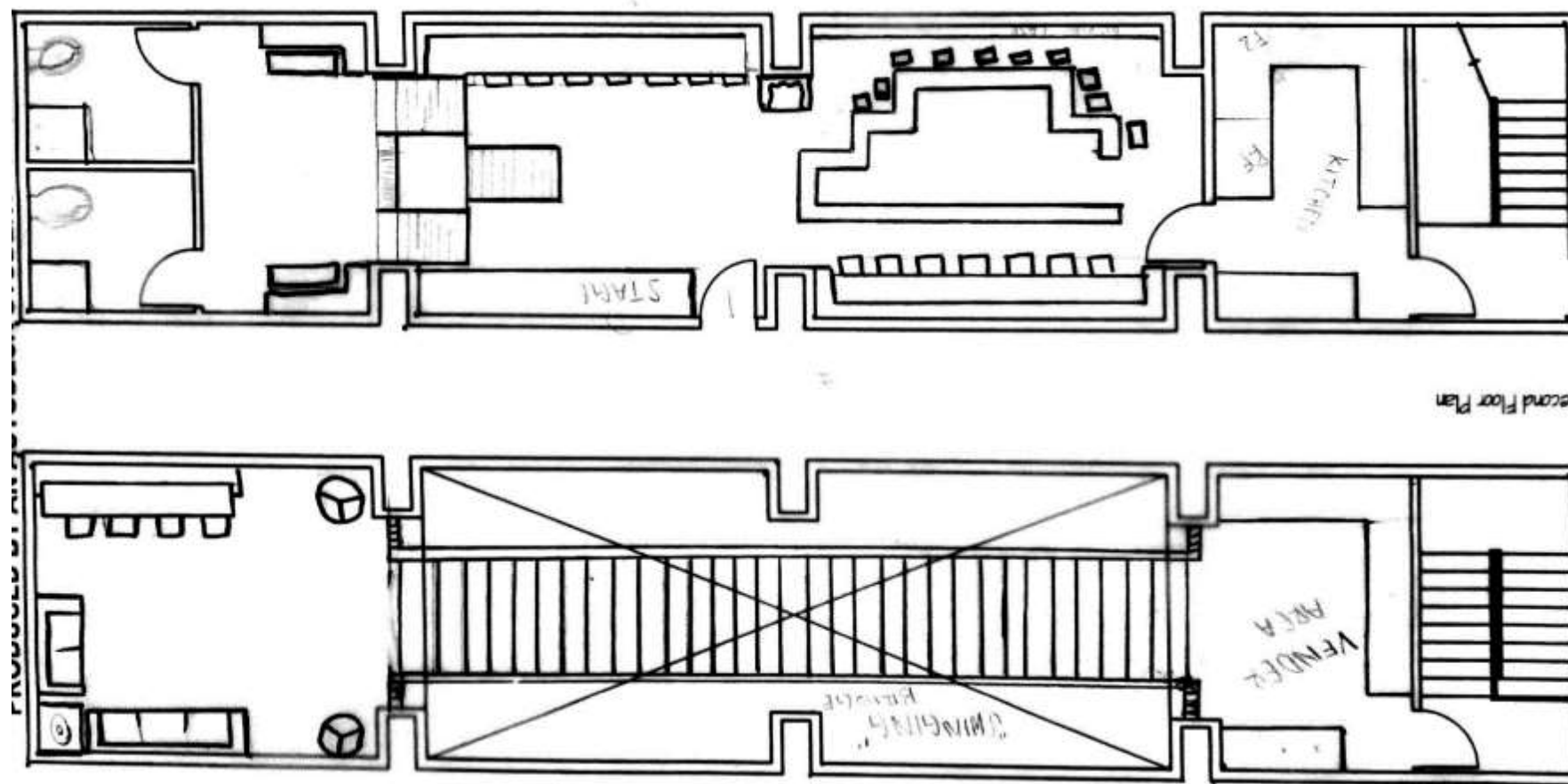


Assignment 3: Problem Resolution Sketches

Floor Plan:
Option 1

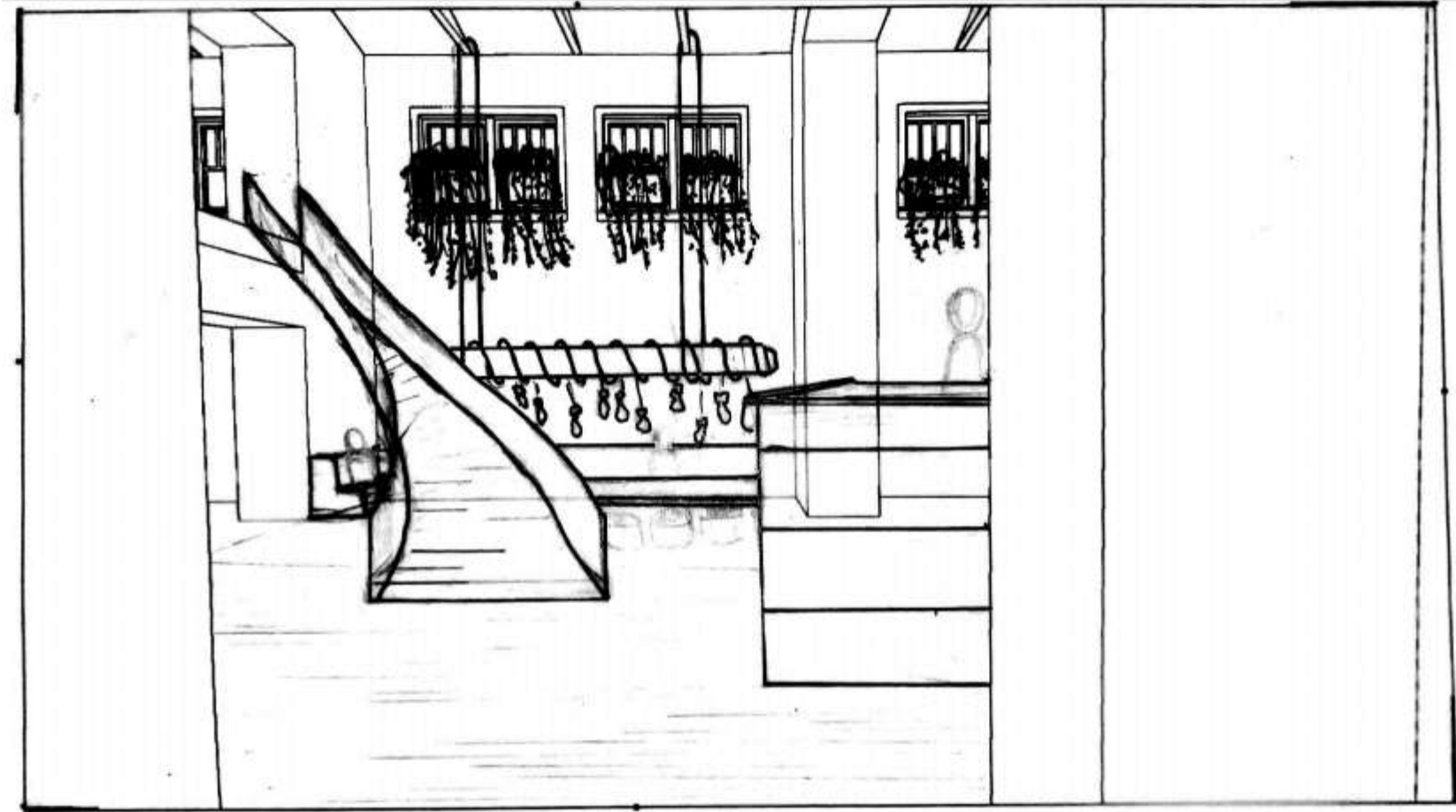


Floor Plan:
Option 2

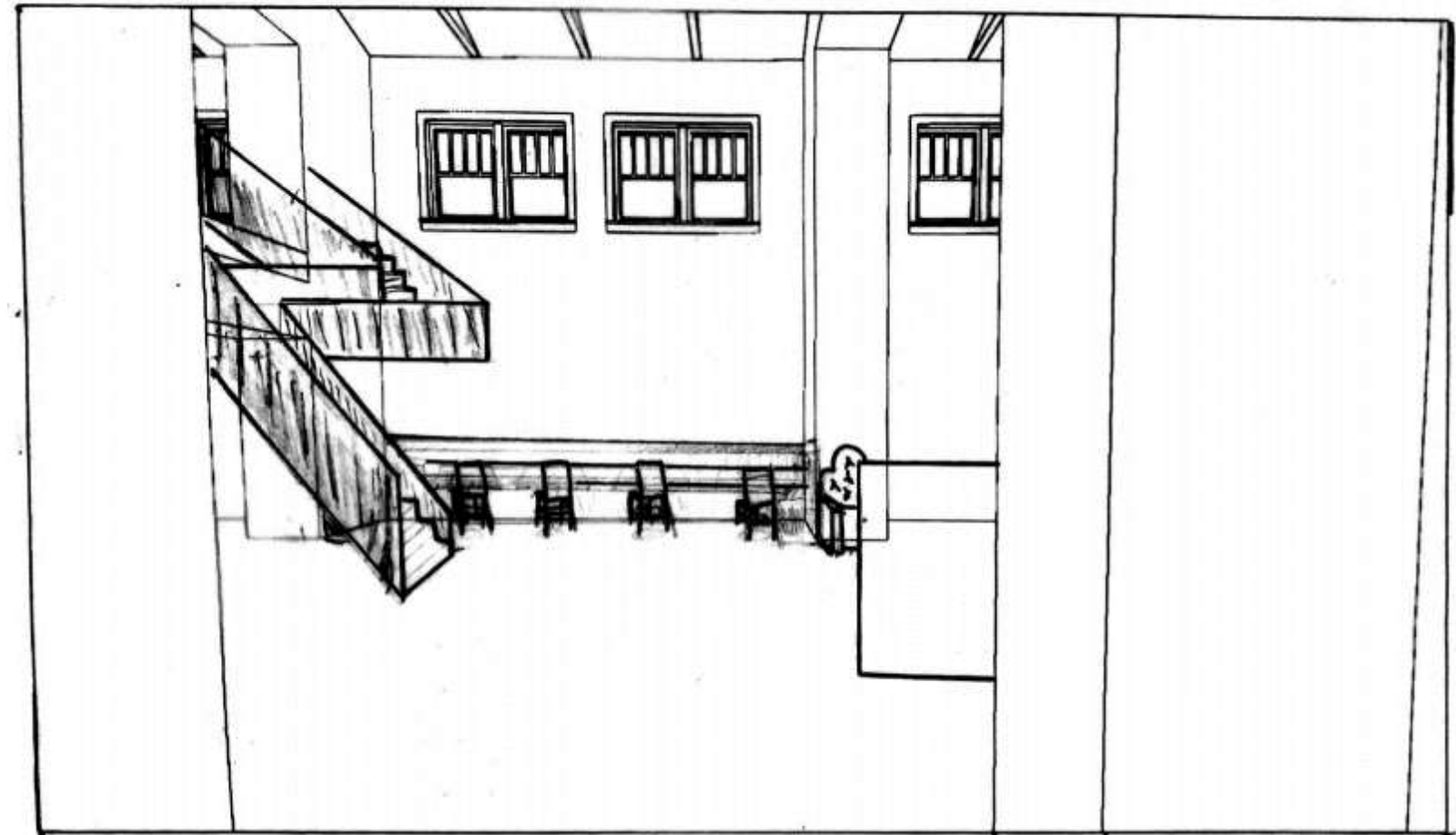


Assignment 3: Problem Resolution Sketches

Option 1

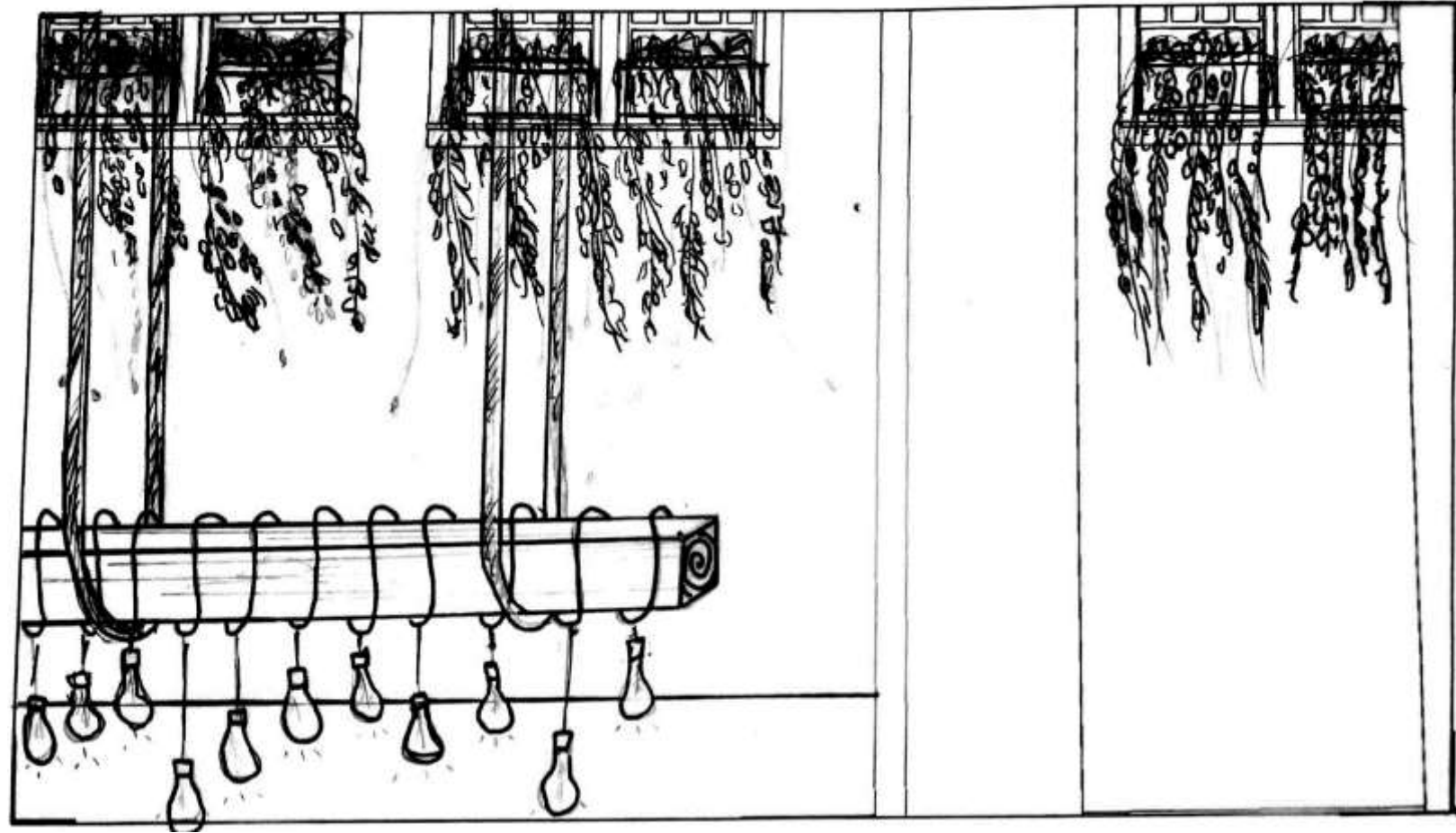


Option 2

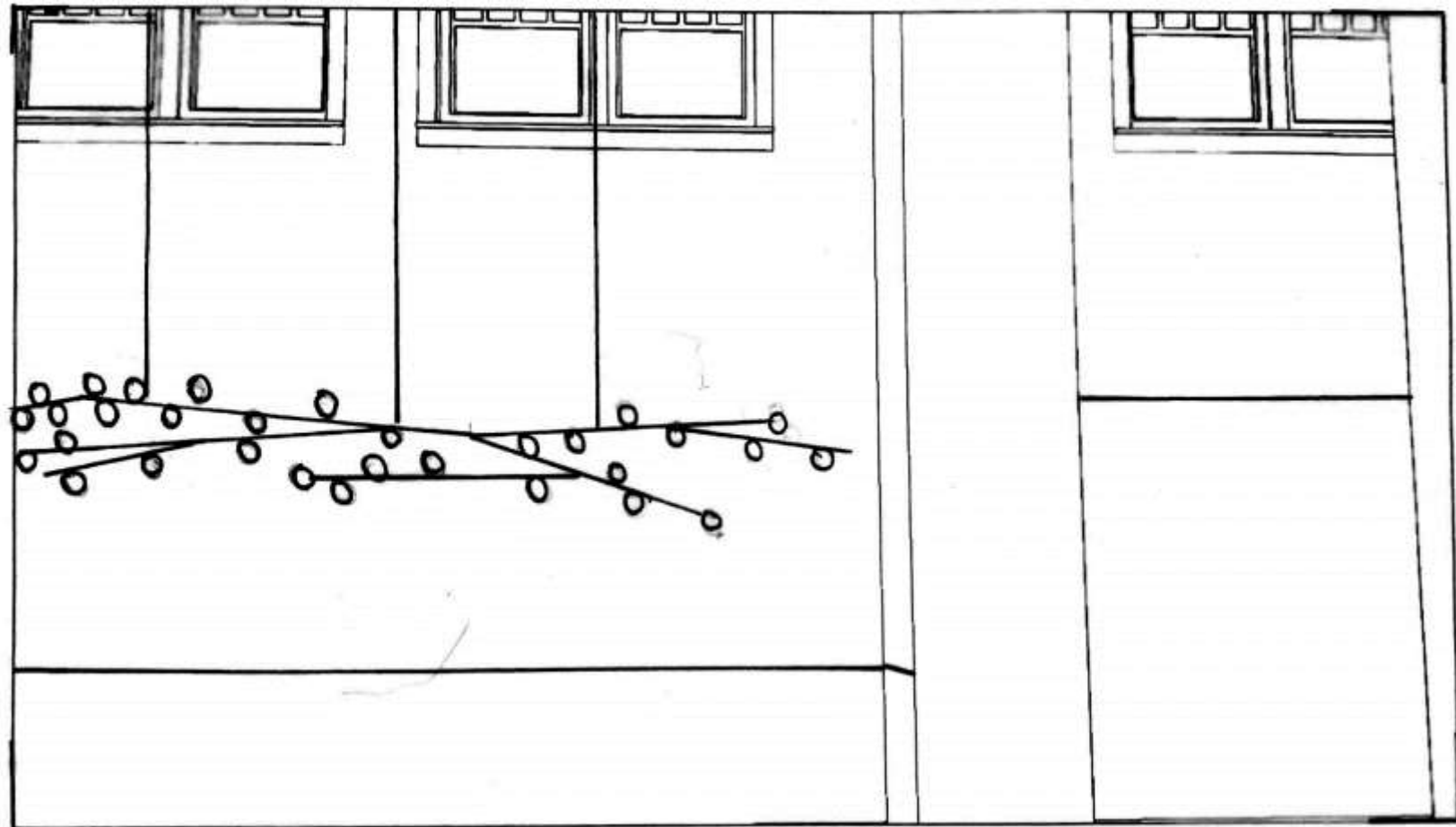


Assignment 3: Problem Resolution Sketches

Option 1

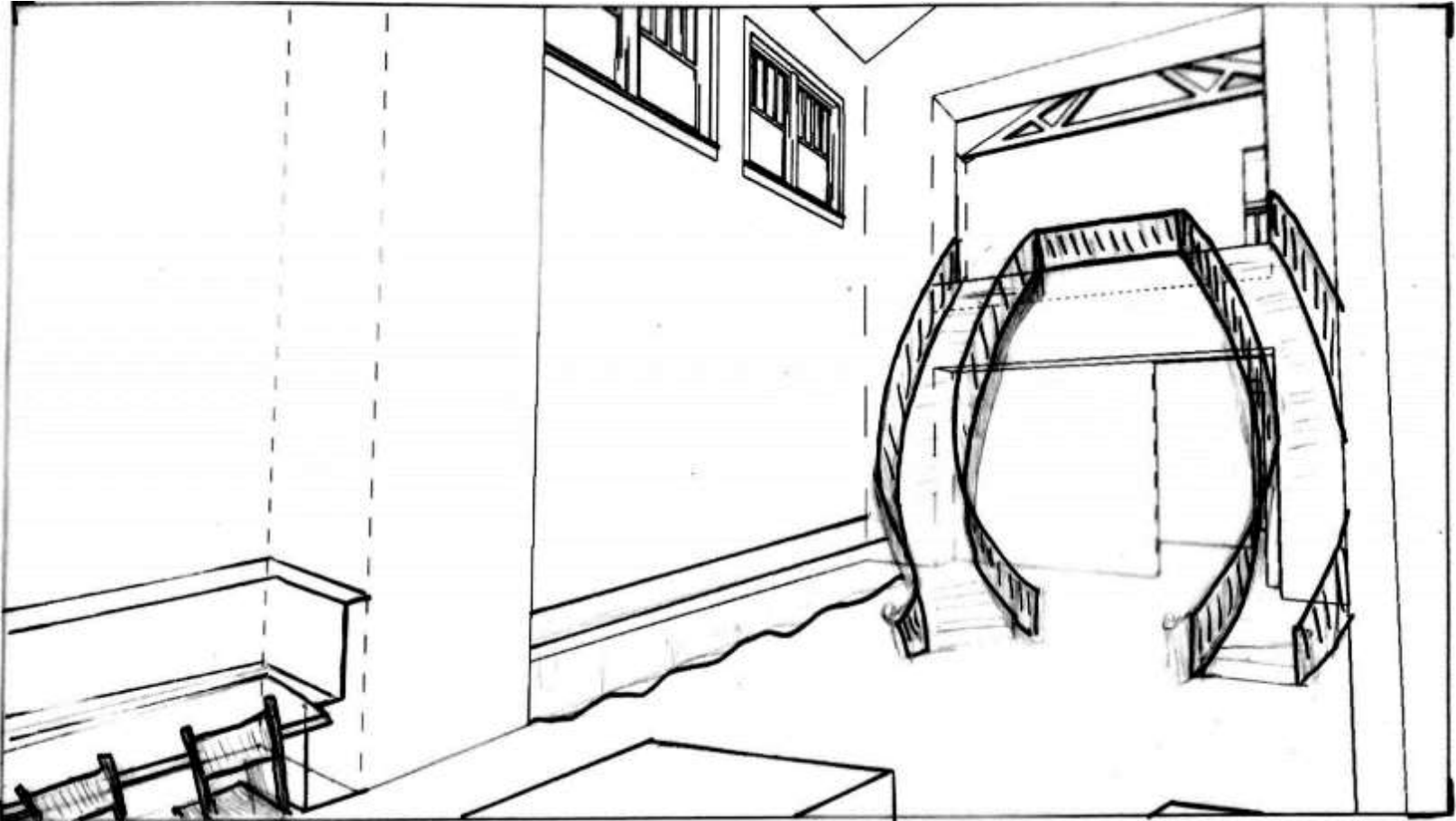


Option 2

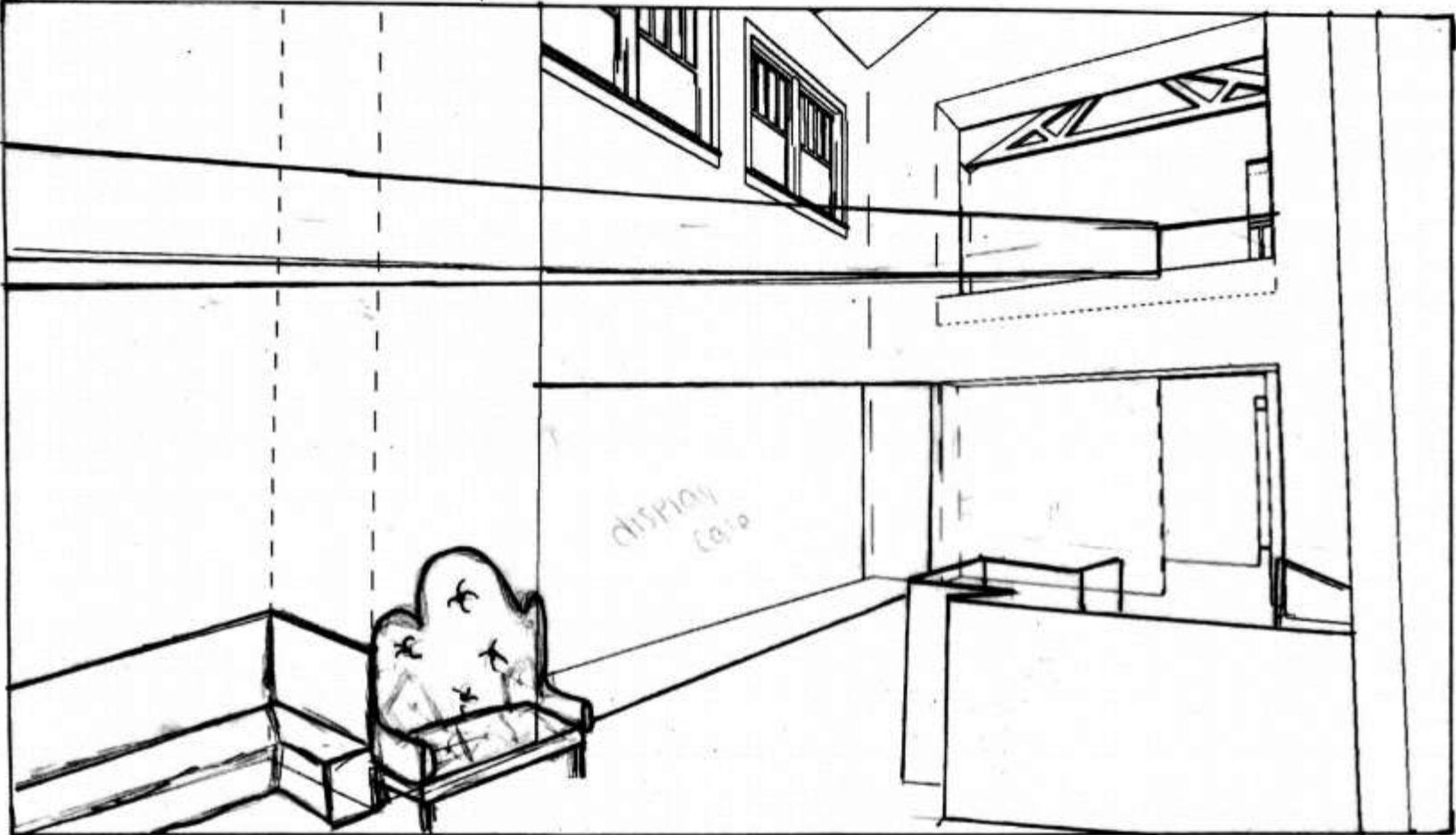


Assignment 3: Problem Resolution Sketches

Option 1

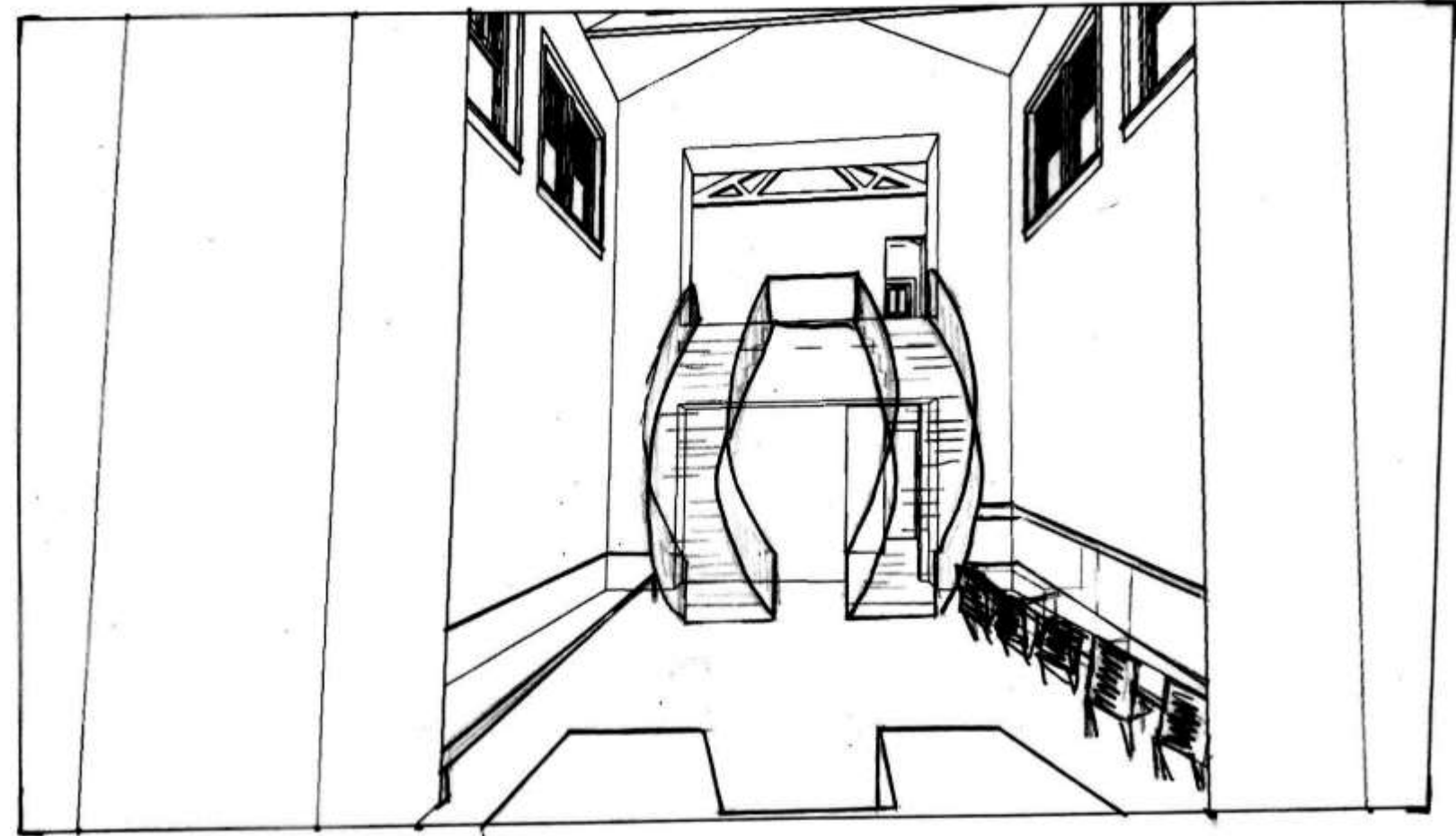


Option 2

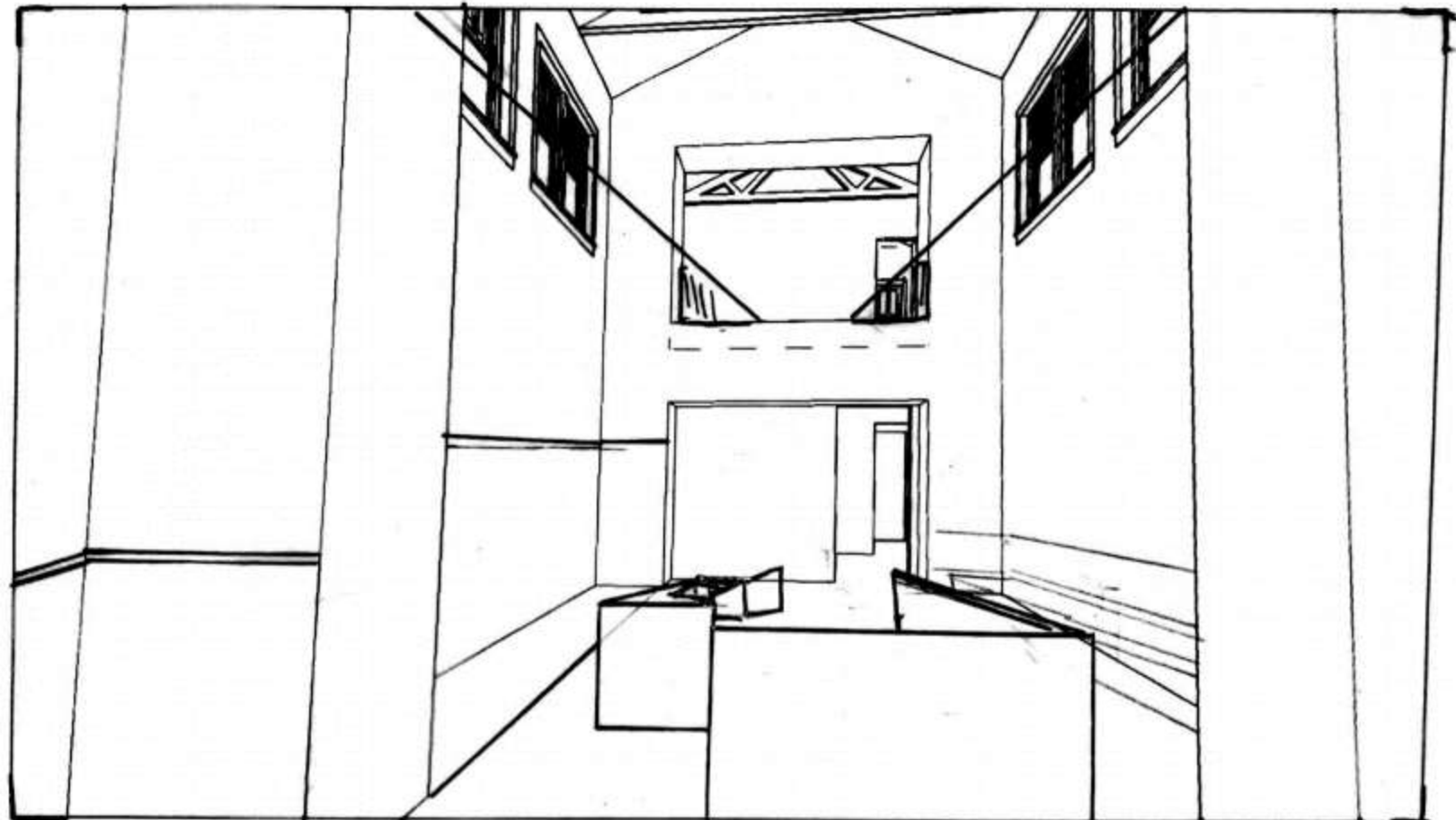


Assignment 3: Problem Resolution Sketches

Option 1

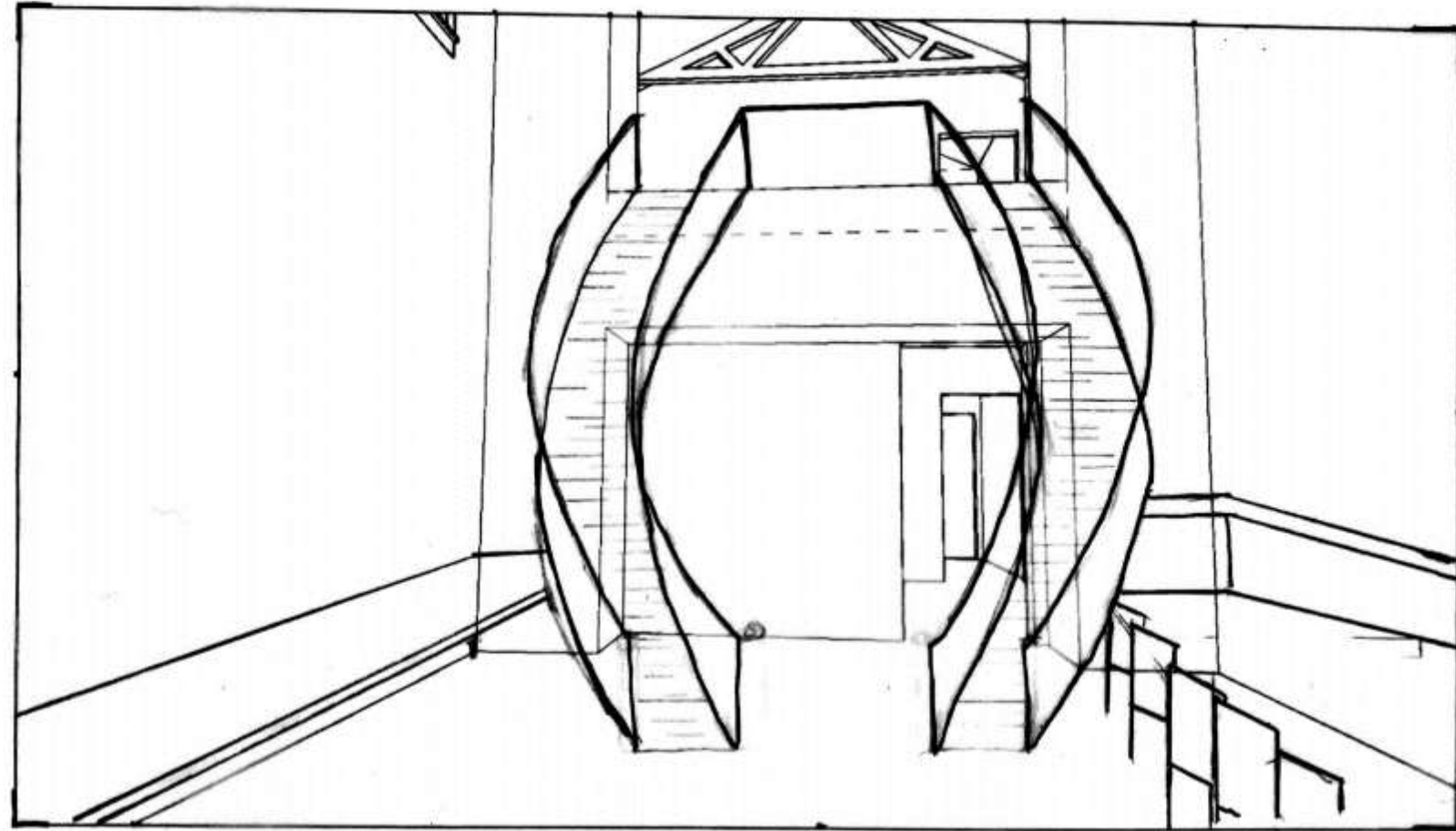


Option 2

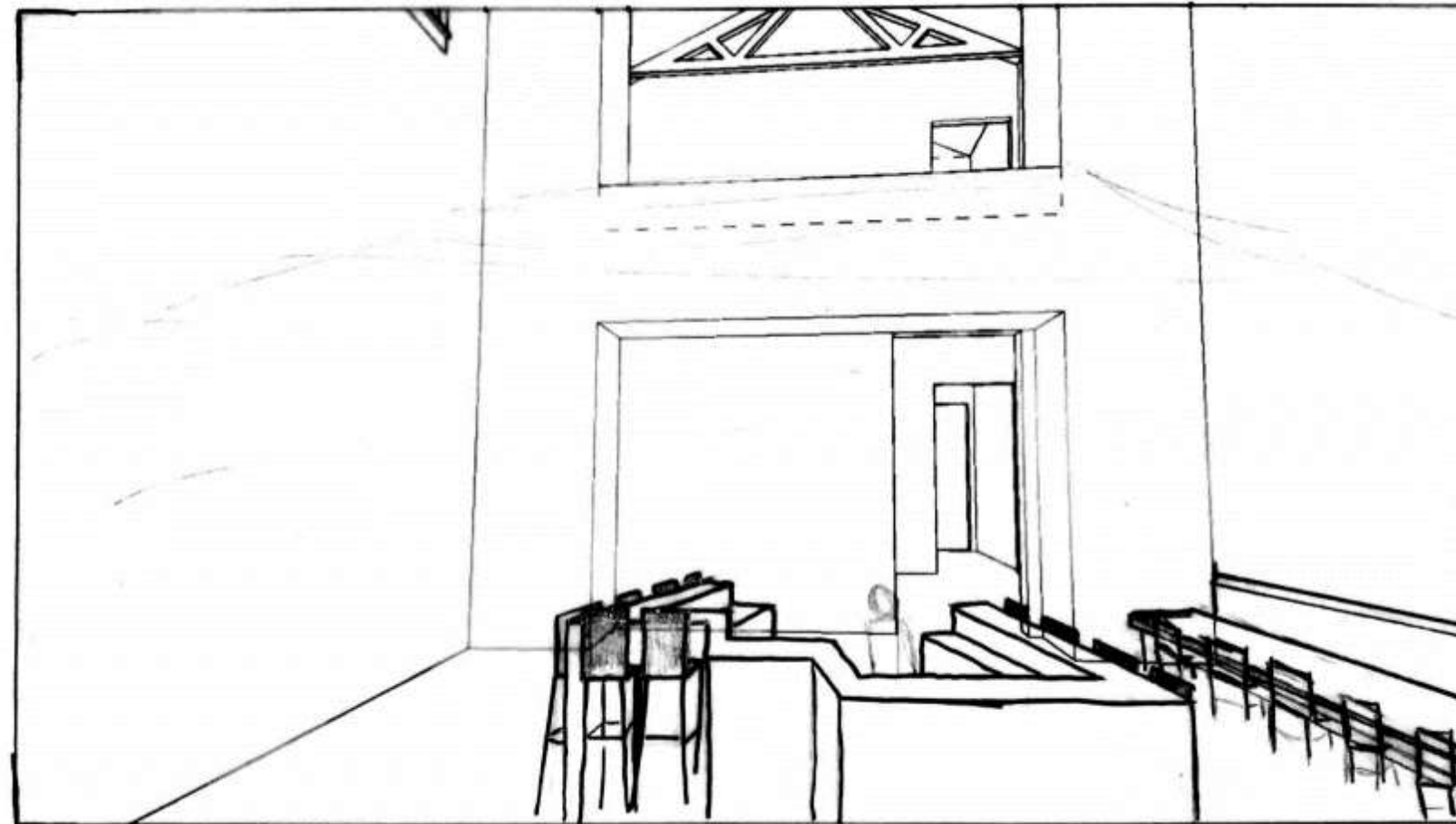


Assignment 3: Problem Resolution Sketches

Option 1

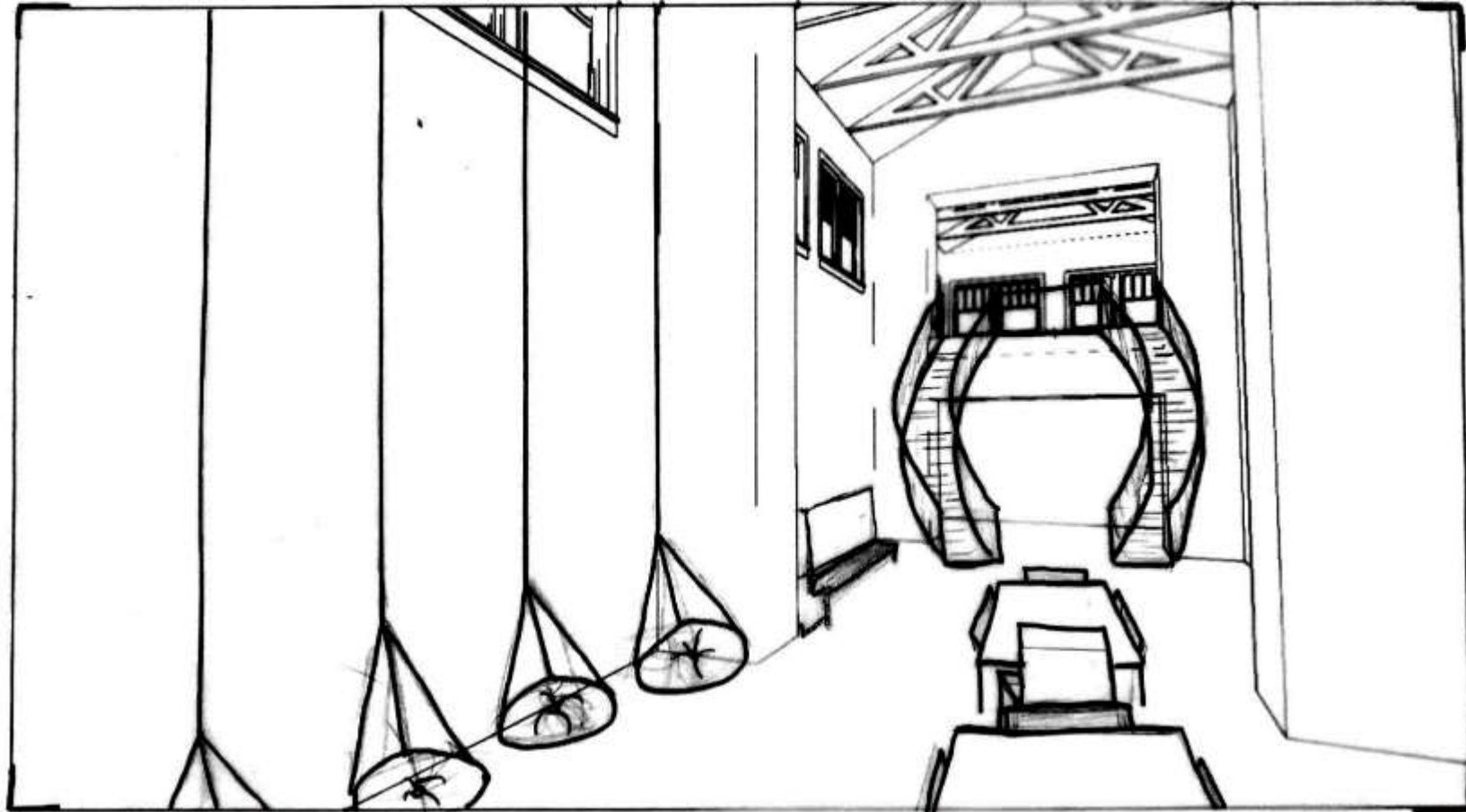


Option 2



Assignment 3: Problem Resolution Sketches

Option 1

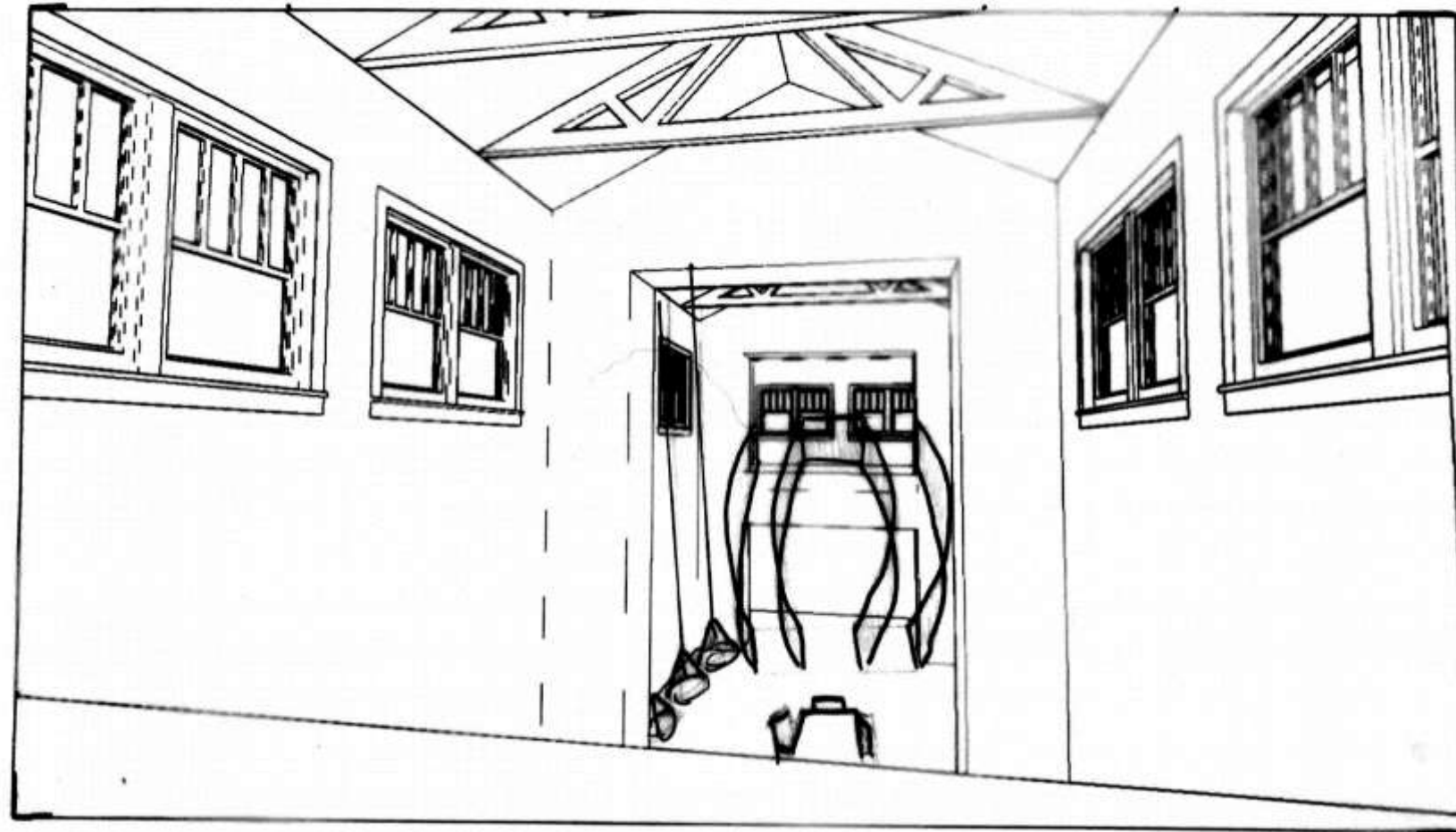


Option 2

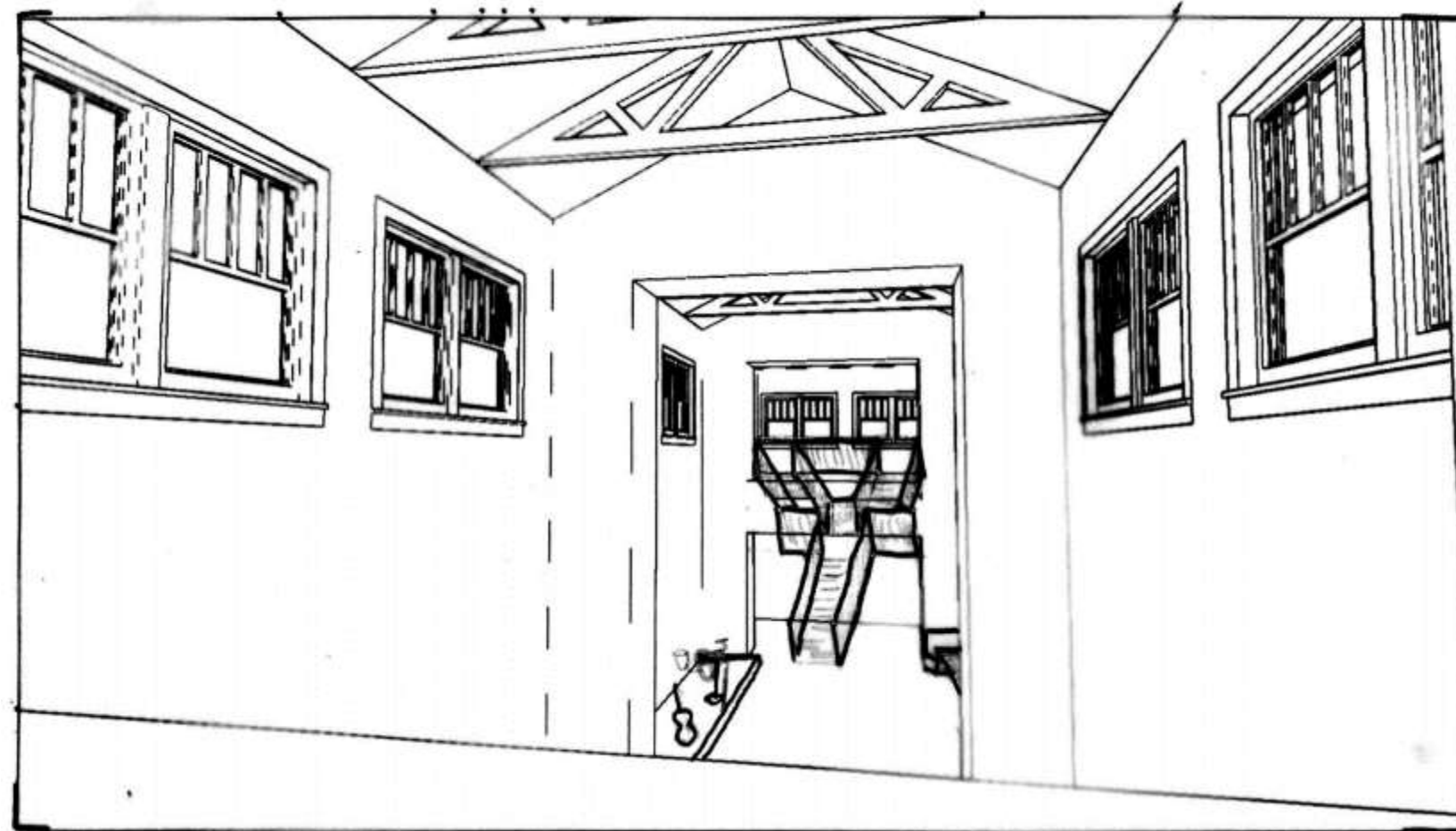


Assignment 3: Problem Resolution Sketches

Option 1

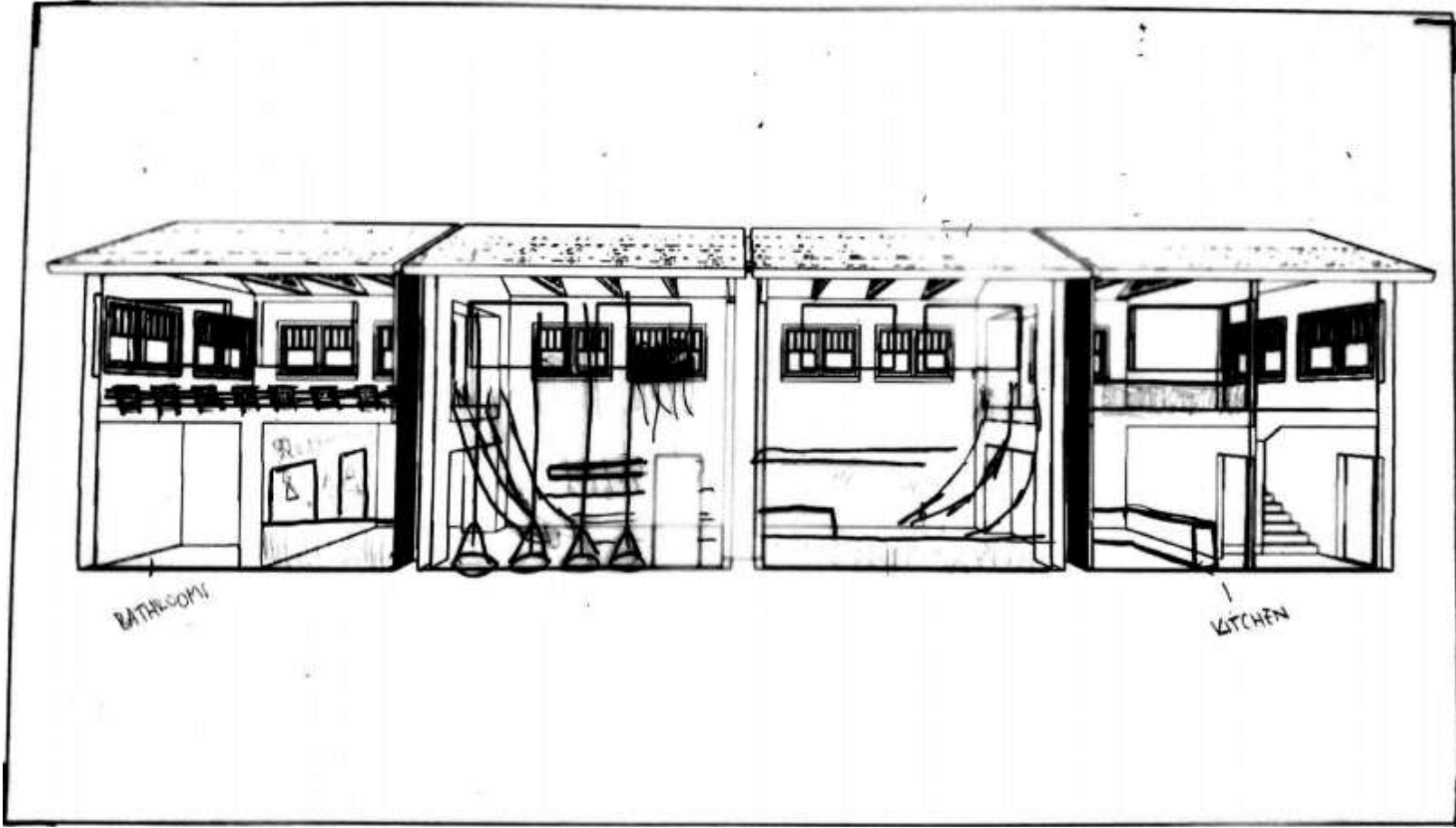


Option 2



Assignment 3: Problem Resolution Sketches

Option 1



Option 2

