

The Third Place

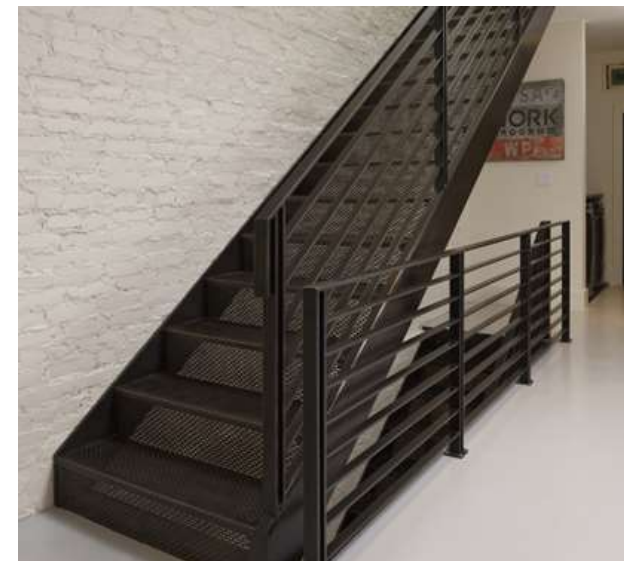
Natalya Hall

Binder 1

IDSN 2102 F20

The Third Place Research

- Industrial design because of its location being surrounded by warehouses
- Used as a meeting place for business and college staff
- Coffee shop that serves light snacks
- Display shelves to sell products
- Has a catwalk for dining



Natalya Hall

IDSN 2102 F20

User Profile:

The main people that will be using this space would be:

- East Carolina students
- East Carolina staff and administration
- Business owners
- Greenville residents

Natalya Hall

IDSN 2102 F20



UPTOWN AREA CAMPUS PROPERTIES
COMPOSITE PITT COUNTY OPIS AERIAL MAP

Site Profile

The Third Place will be located on the corner of S Green St. and W 11th St.

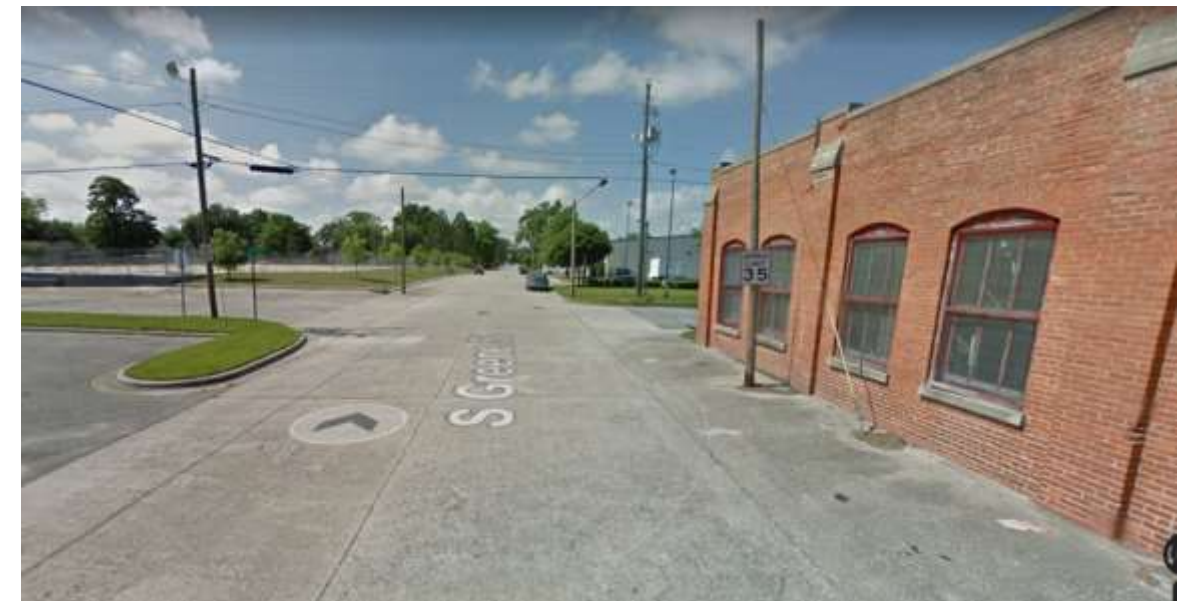


View facing W 10th St.

Natalya Hall

IDSN 2102 F20

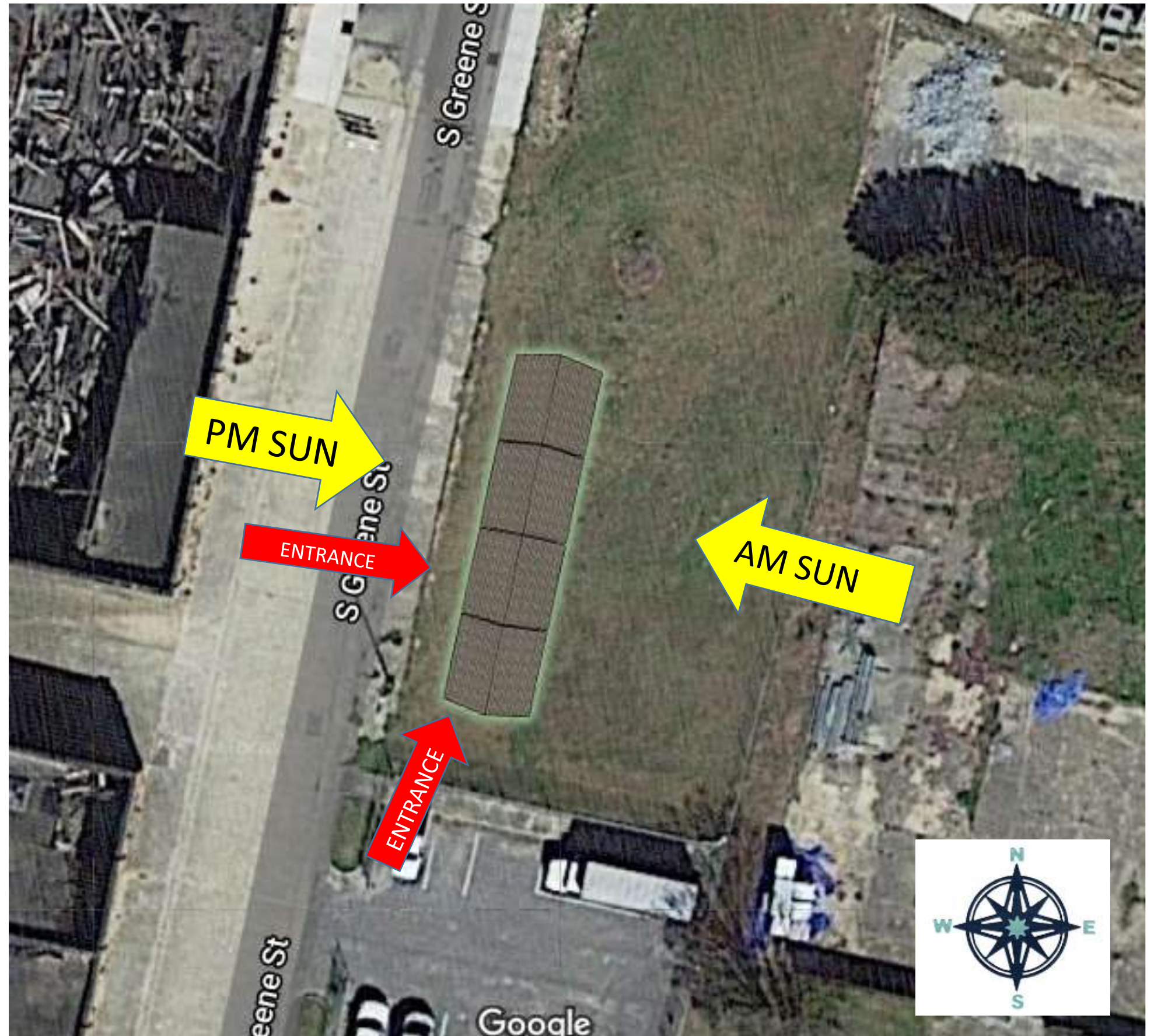
View facing W 11th St.



Site Analysis

The coffee shop will have two entrances, one for the general public and an emergency exit on the back.

The building will receive both morning and afternoon sun. The morning sun will hit the east side of the building and the evening sun will hit the west side.



Natalya Hall

IDSN 2102 F20

Designer Problem Statement

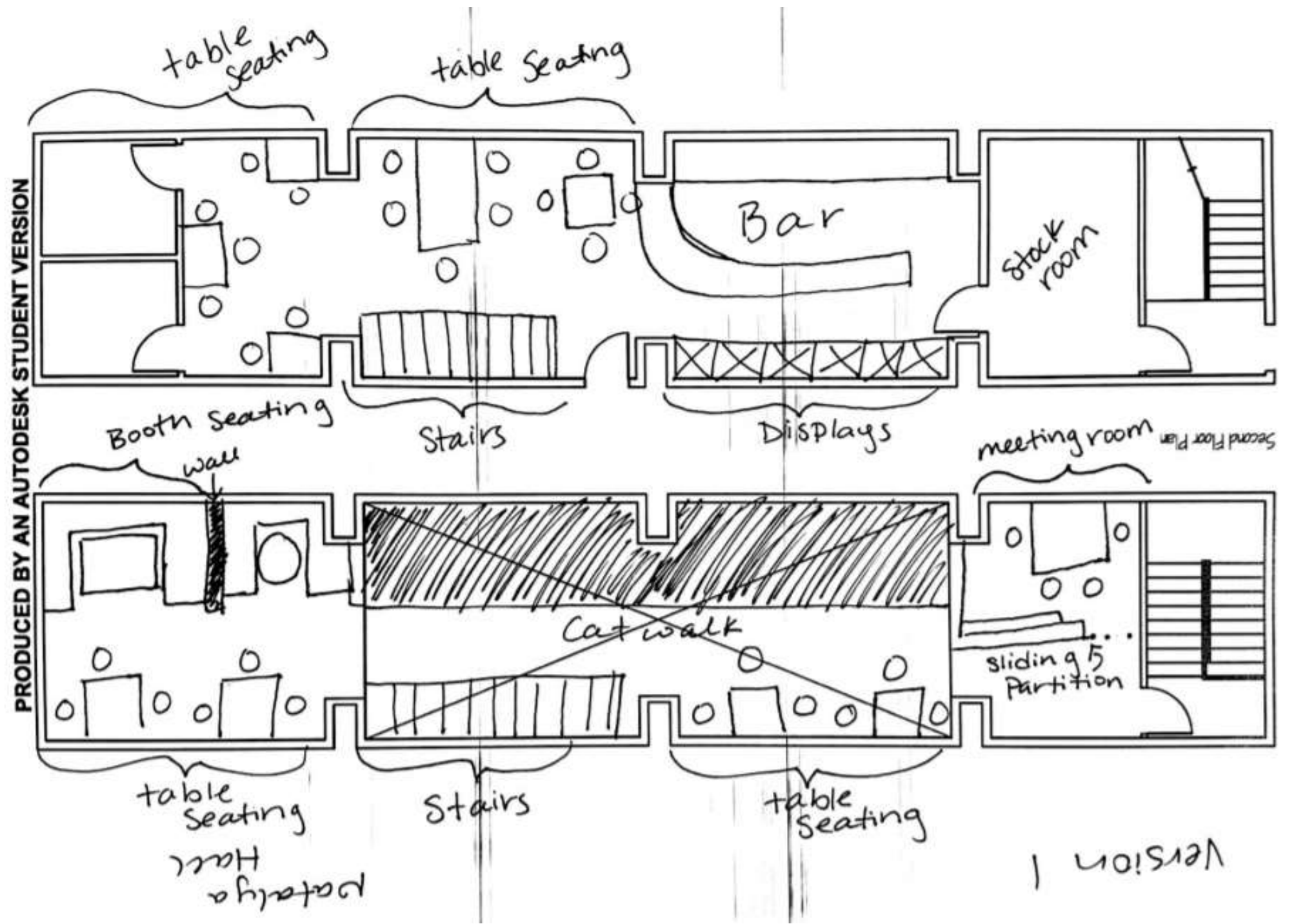
The main issues facing the designer in this project are:

- Placing the second staircase inside the building in order to access the catwalk and create a second emergency exit from the second story of the building.
- Being able to sufficiently light the building because all the windows are located on the second story



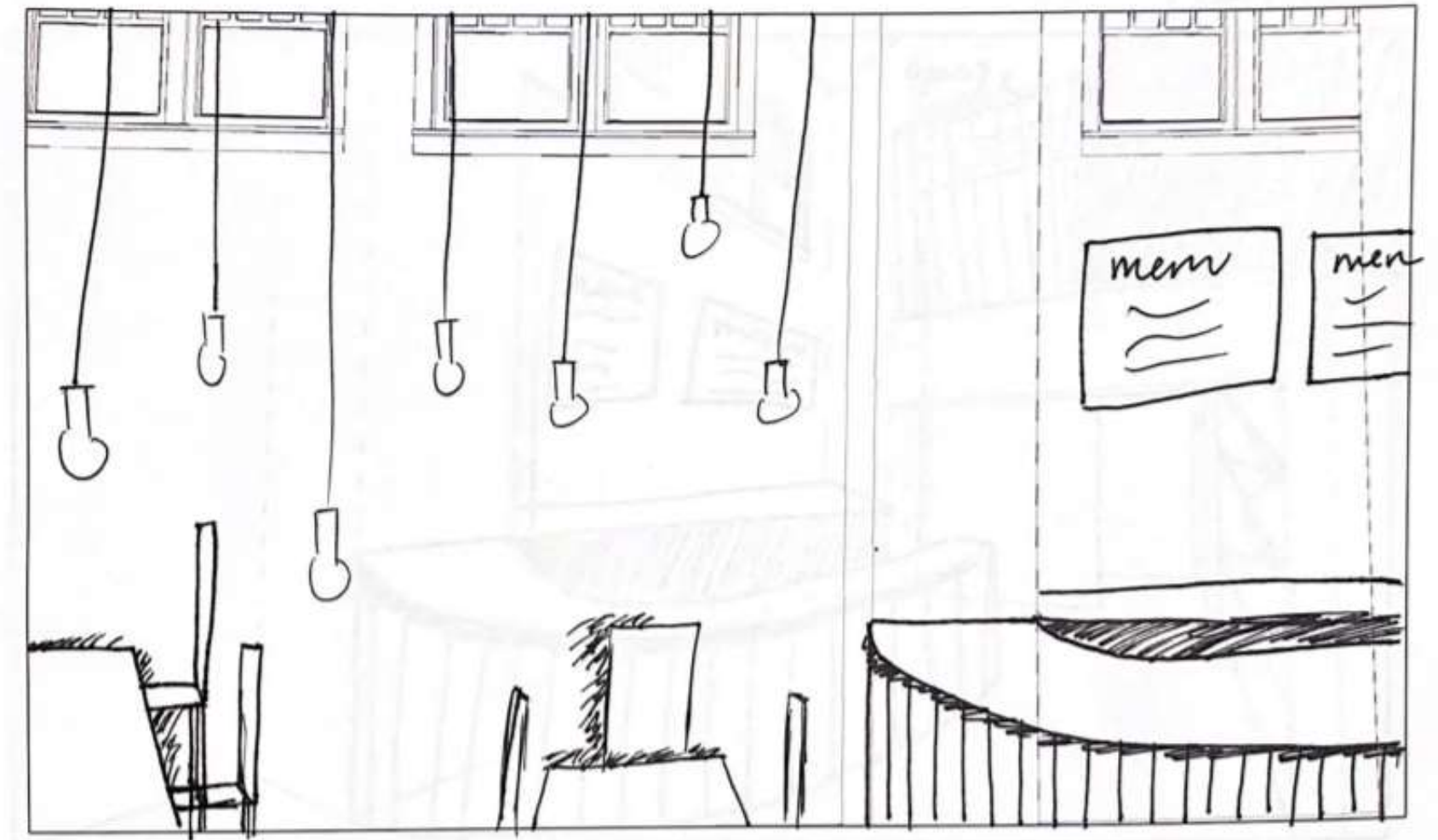
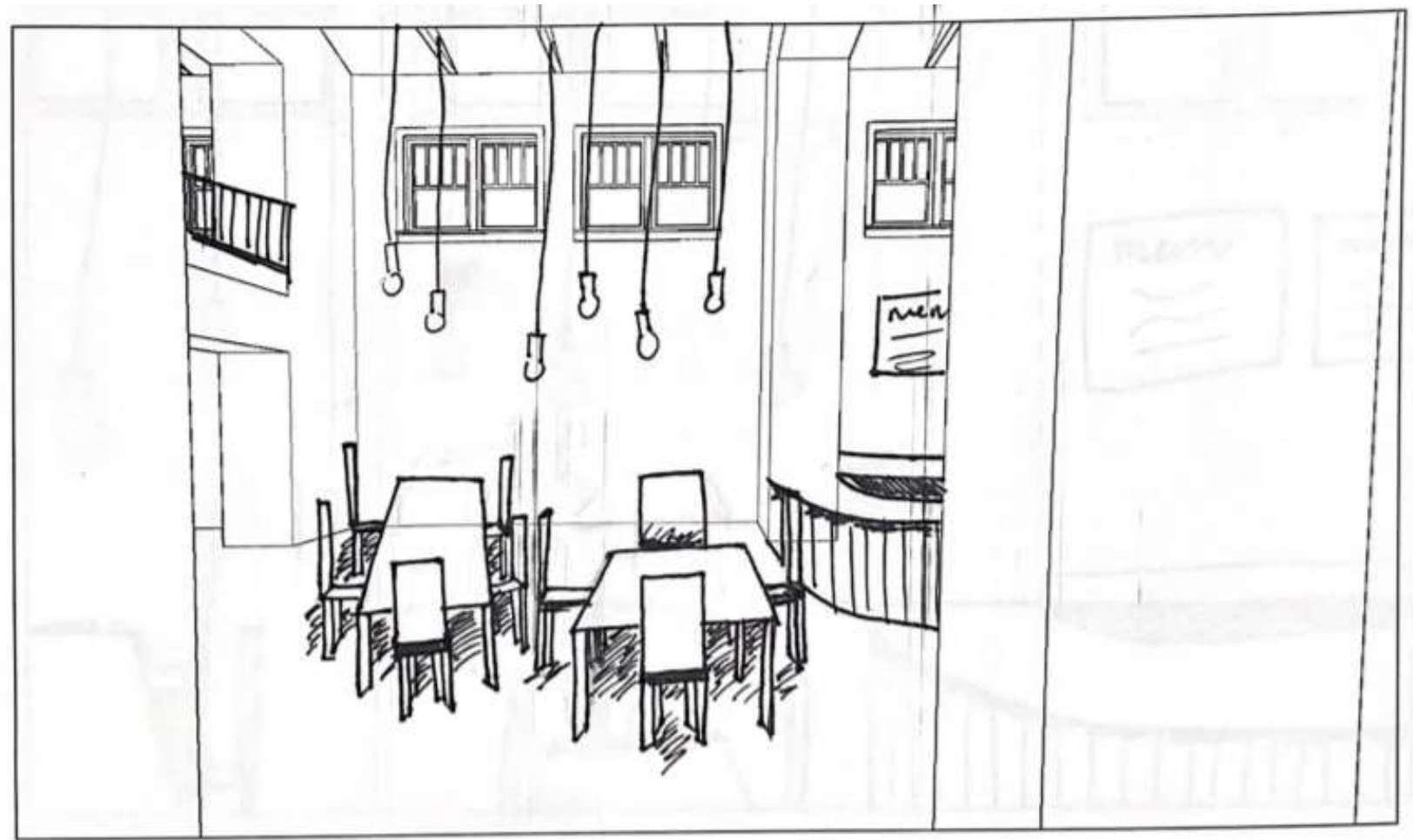
Natalya Hall

IDSN 2102 F20



Natalya Hall

IDSN 2102 F20

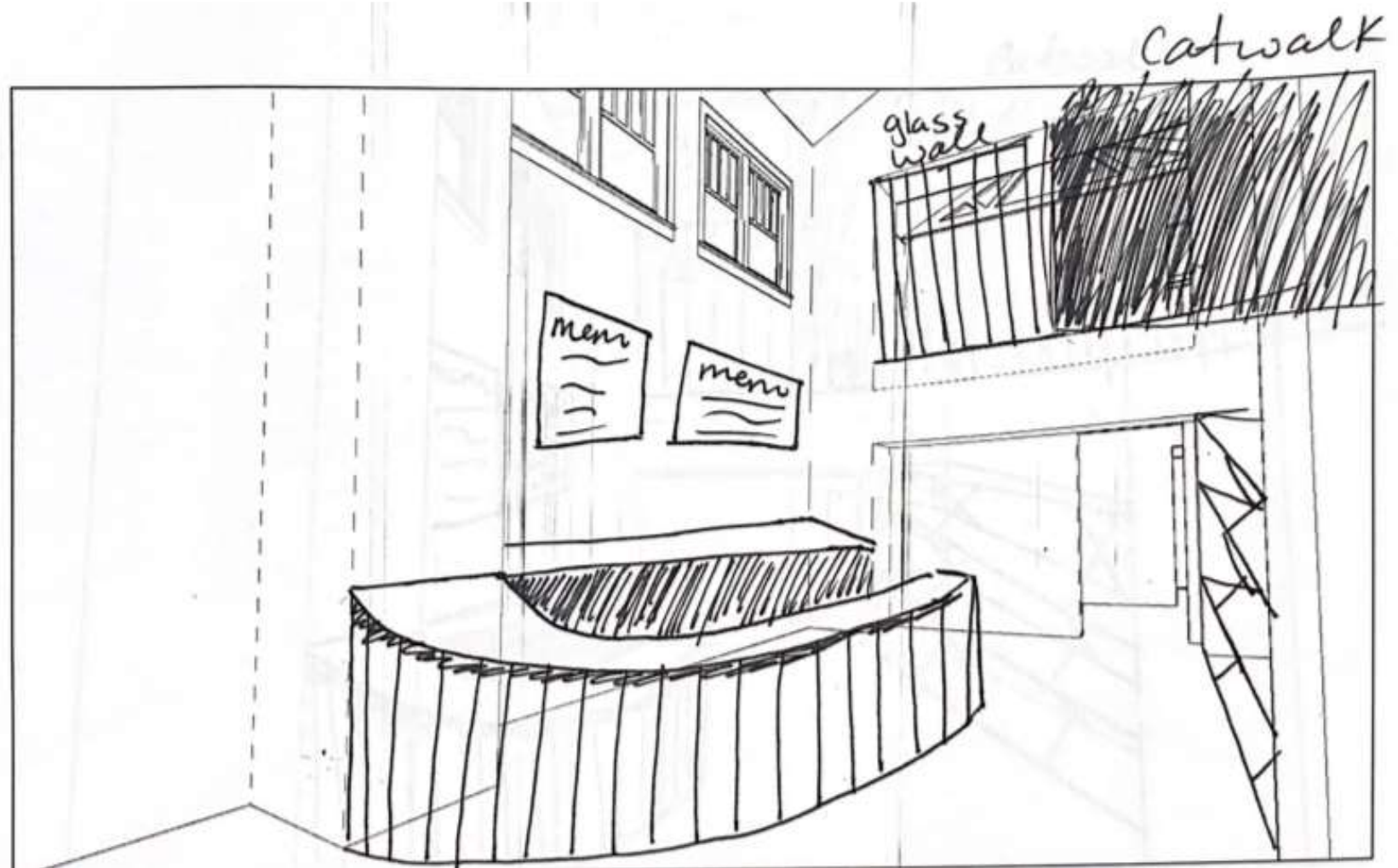


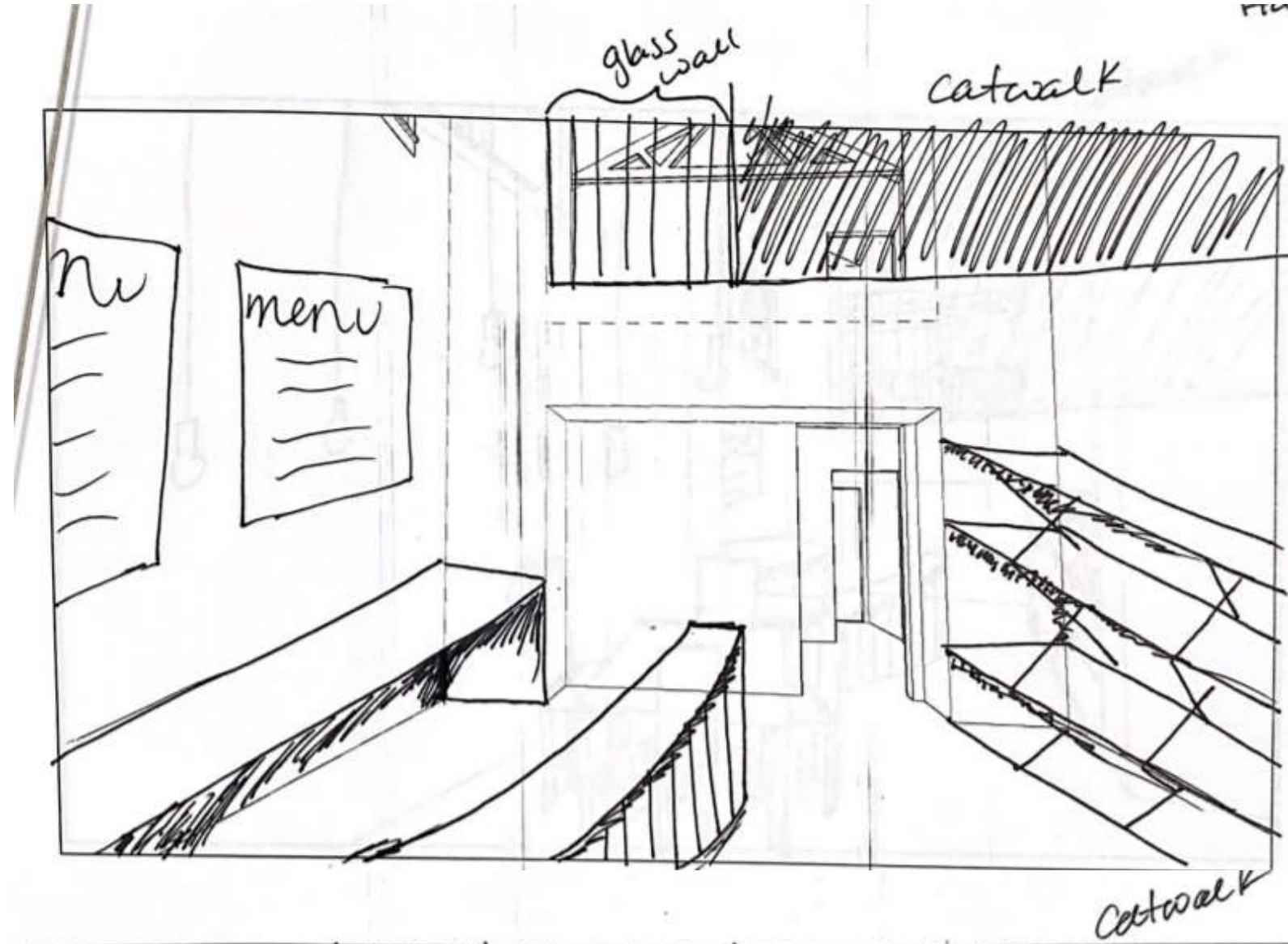
Natalya Hall

IDSN 2102 F20

Natalya Hall

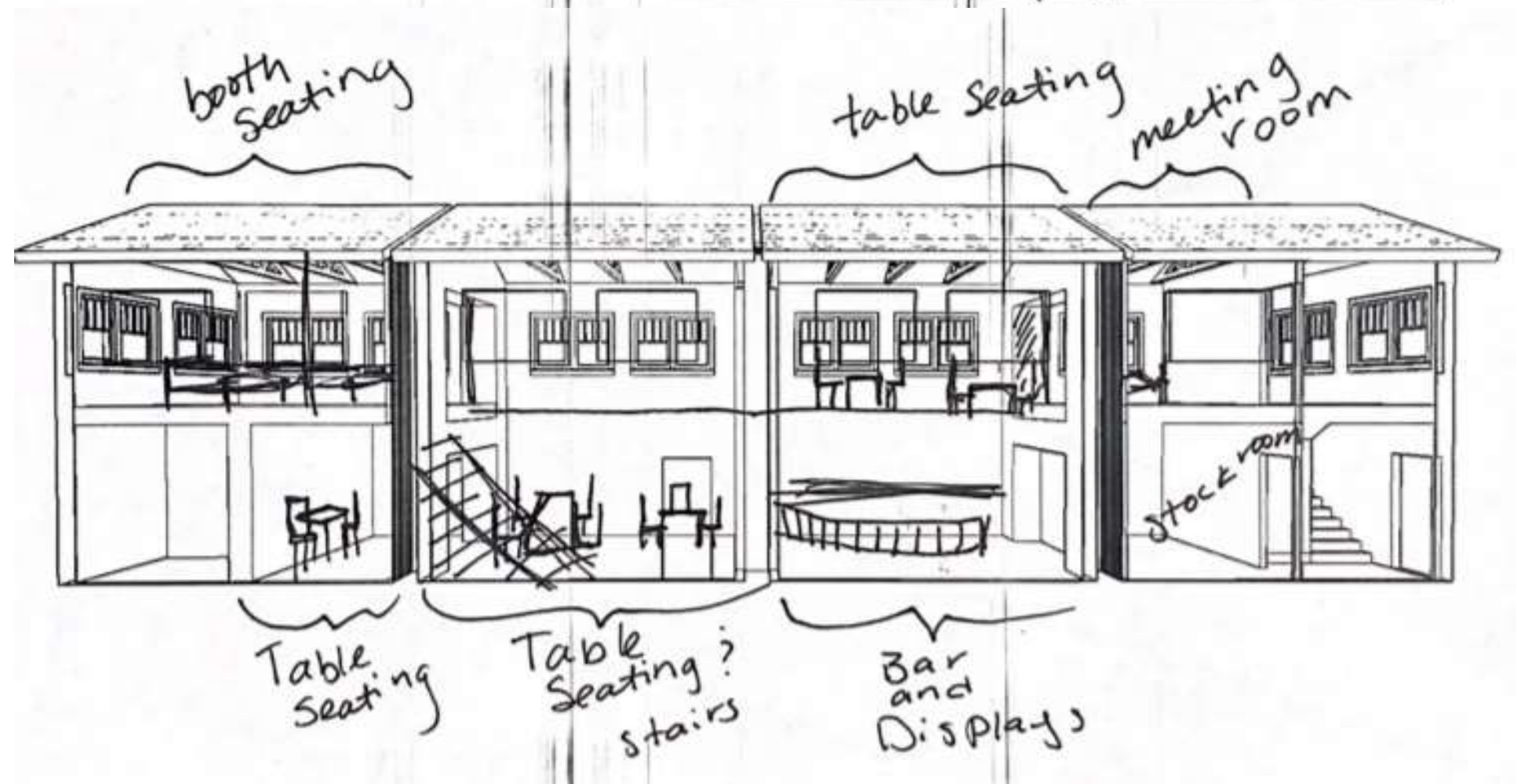
IDSN 2102 F19





Natalya Hall

IDSN 2102 F20

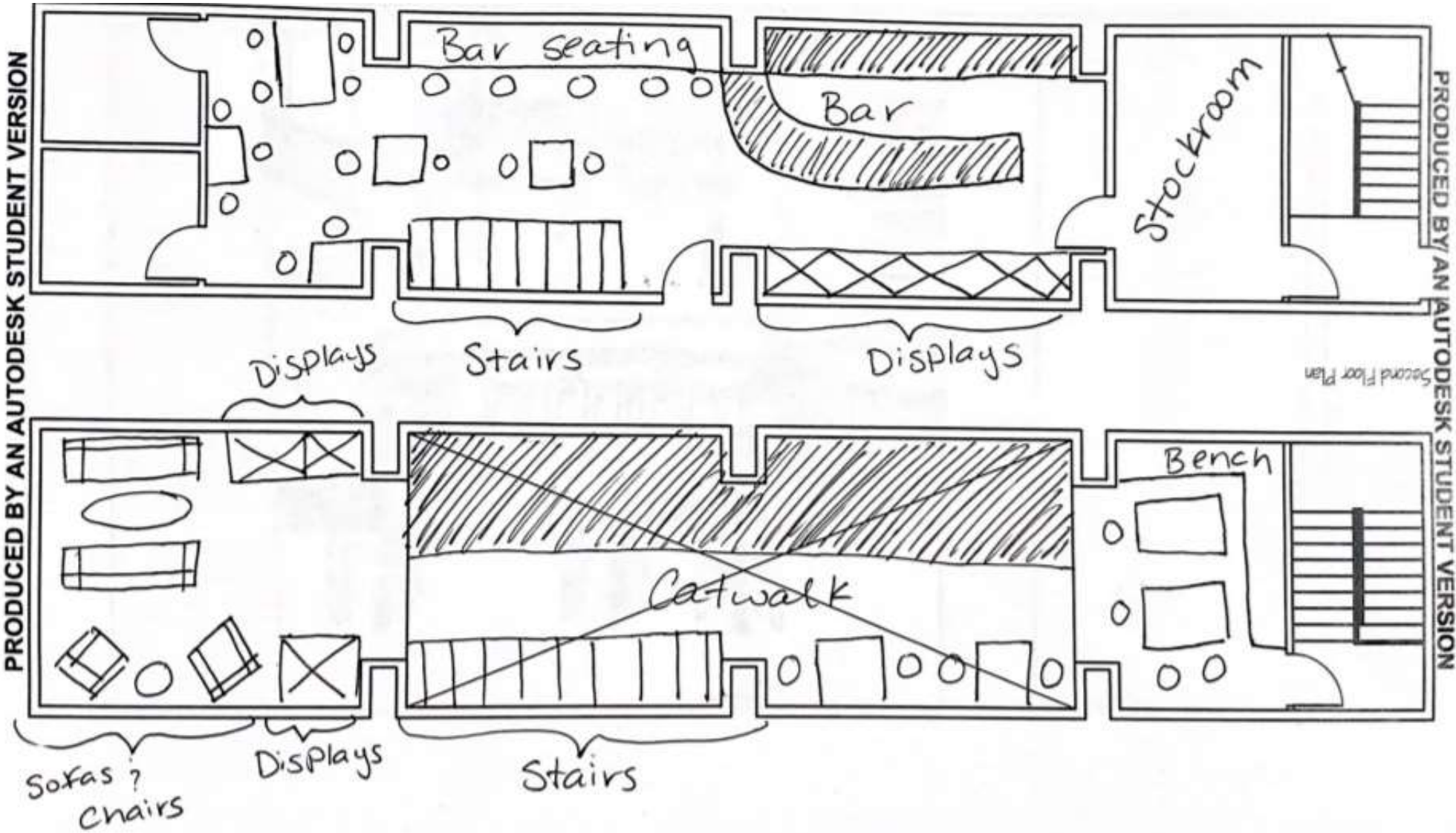


Natalya Hall

IDSN 2102 F20

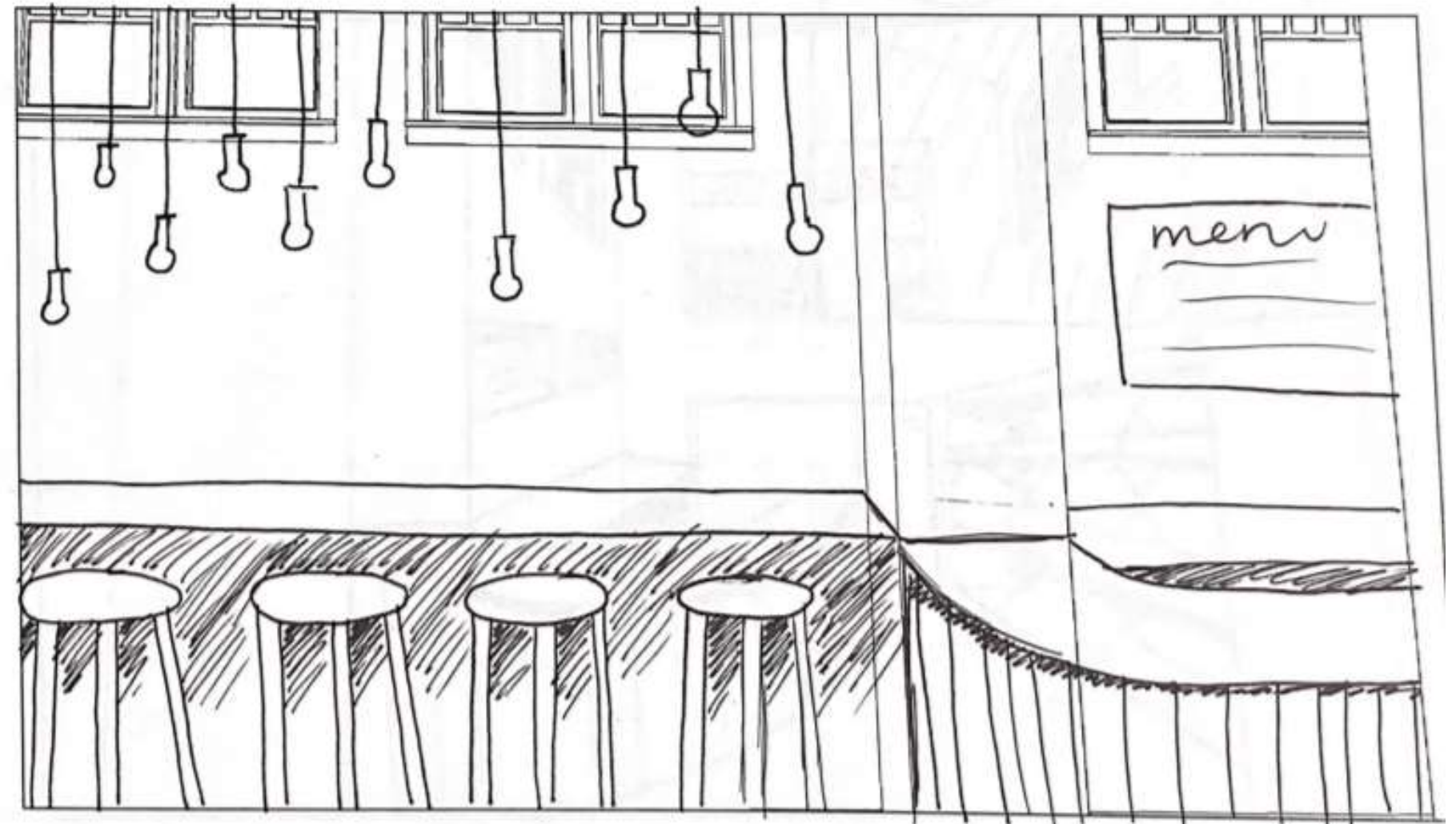
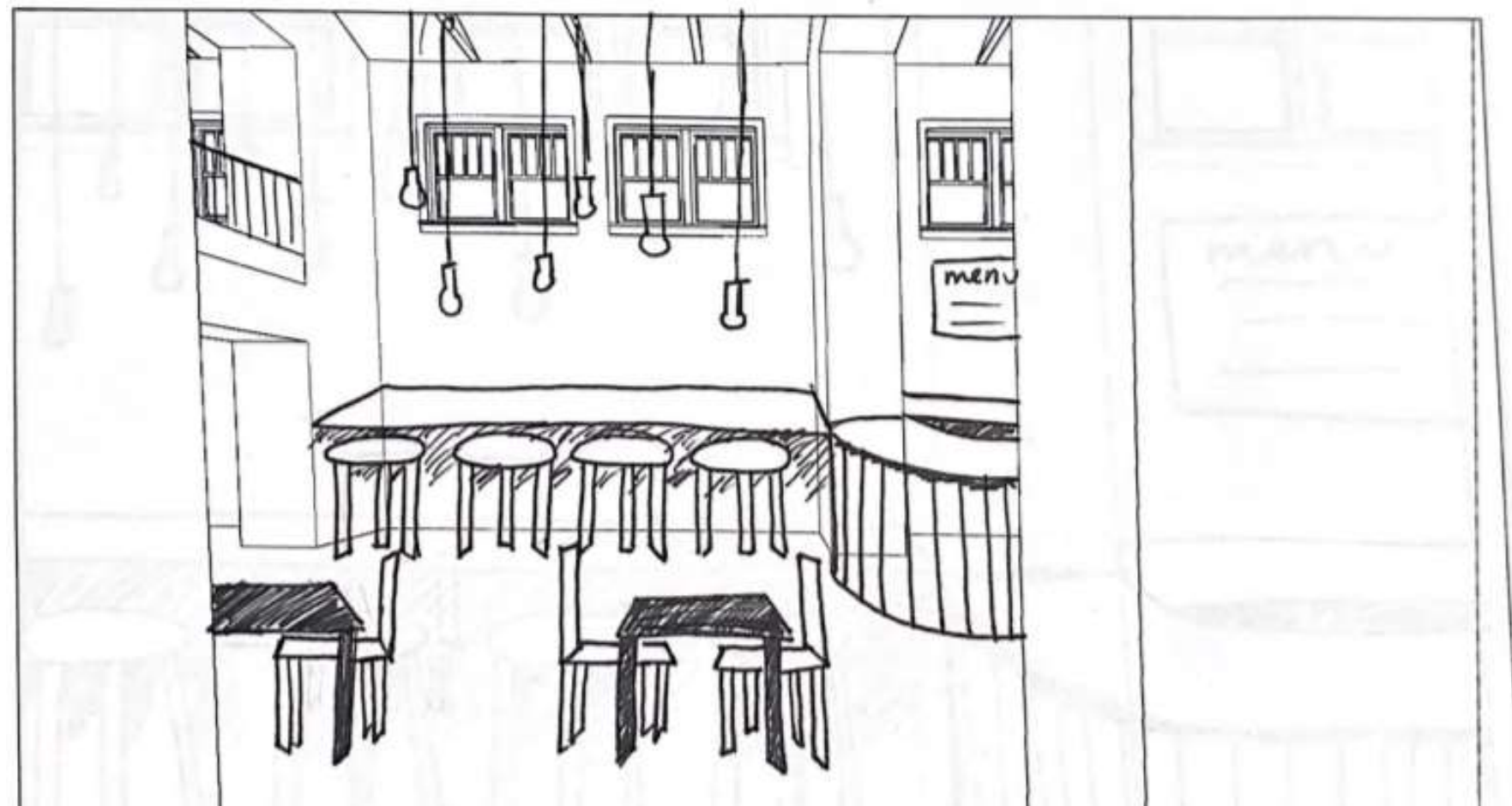
Natalya Hall

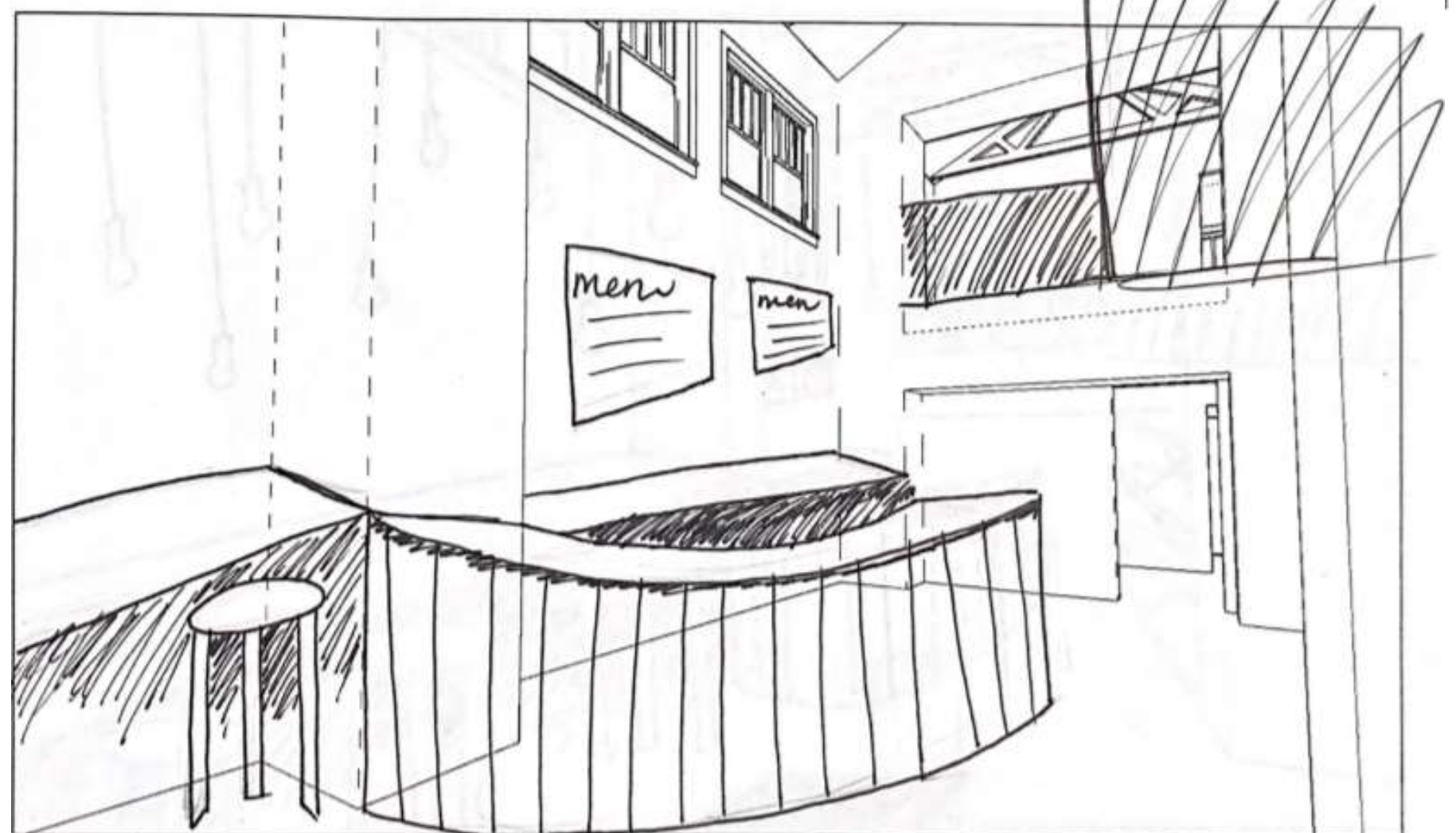
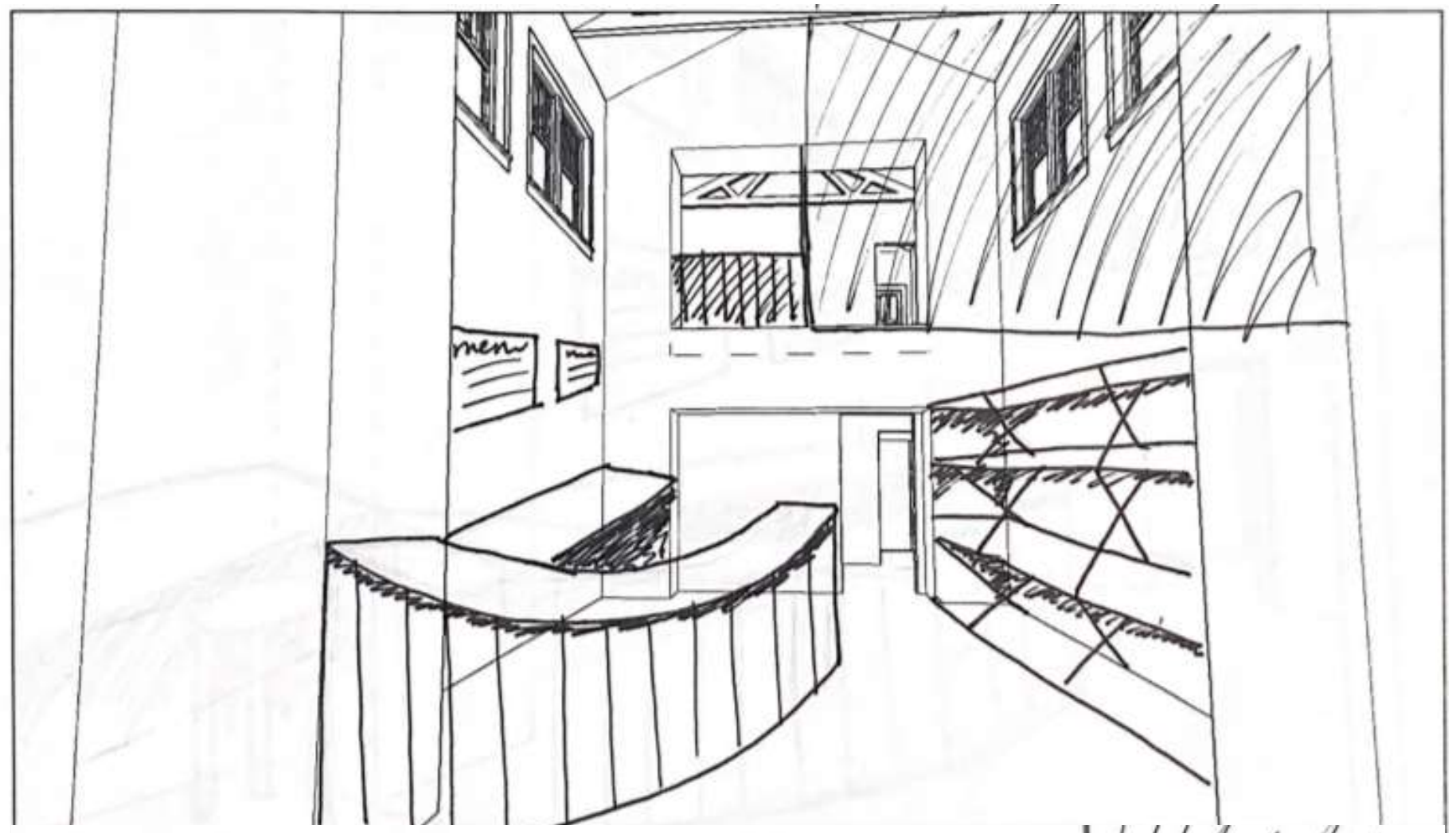
IDSN 2102 F20



Natalya Hall

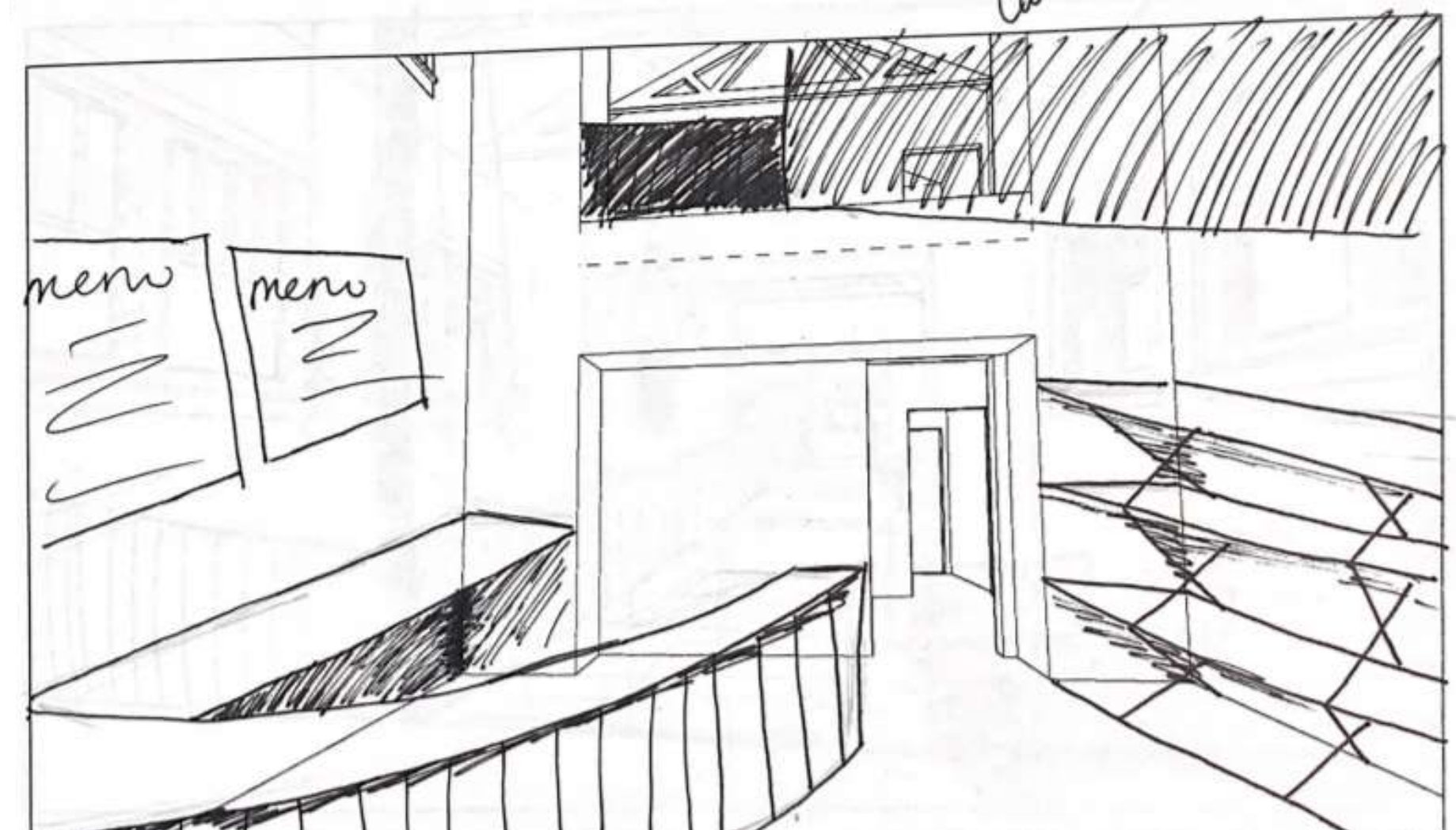
IDSN 2102 F20





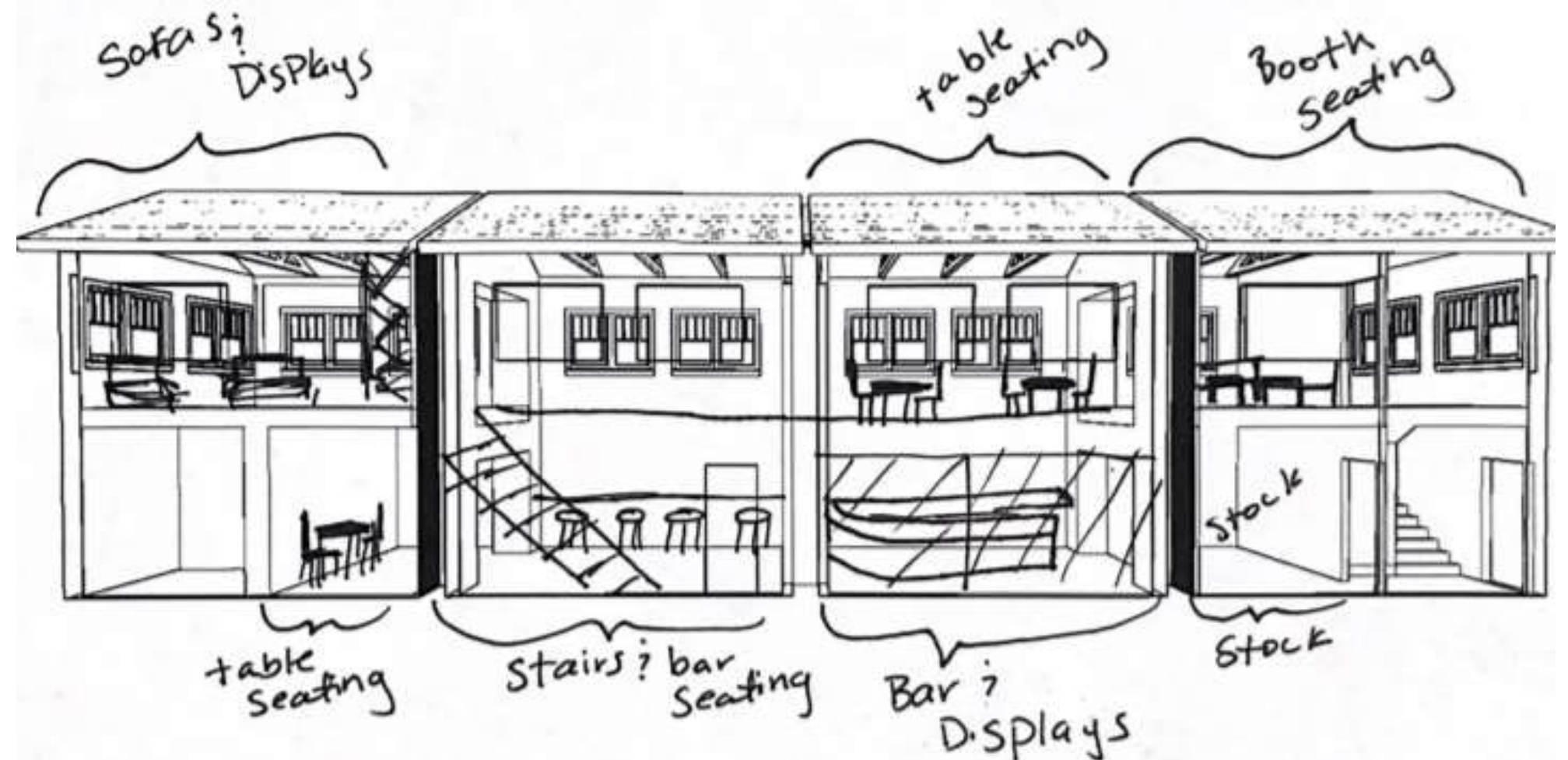
Natalya Hall

IDSN 2102 F20



Natalya Hall

IDSN 2102 F20



Natalya Hall

IDSN 2102 F20